



Why would a Vertex Magneto that was designed over 50 years ago still be so popular? Because it WORKS!

In a time when most everything is a disposable electronic or plastic wonder work, it is reassuring to know that simple reliable designs still exist. The Vertex Magneto is an integral part of racing and hot rodding history. One of the great legends and as a part of the quality family of Taylor Cable Products, Vertex continues to improve on the quality, power and reliability of the Vertex Magneto.

We continue to refine the design and improve the manufacturing process of one of the industries timeless magnetos. Resulting in a series of magnetos that fire your engine for years to come. Taylor/Vertex is committed to quality processes that live up to the legacy of the Vertex Magneto.

Today's Vertex Magneto features a one-piece aluminum base that adds stability to the magneto and is stronger and lighter weight than the old 2-piece style designs of the past. Our engineers and machinists have been able to hold much closer production tolerances on all the machined parts of the magneto and as a result, you can expect even more consistent performance than ever before.

Our evolutionary approach to redefining the classic Vertex has resulted in a dependable series of magnetos that will more than satisfy your ignition requirements, from street rods to blown, injected big blocks. Our Dyno tests have proven that it will produce more than enough ignition energy for today's competitive power levels on a well tuned engine.

Vertex continues to develop power improvements to make you more competitive. We will bring these to you as they are full tested and as robust as the original design.

**MOST POPULAR
COMPETITION MODEL OAC**

**MOST POPULAR SUPER
COMPETITION MODEL OXC**



IGNITION AT ITS BEST ... DEPENDABLE, TROUBLE-FREE OPERATION QUICKER STARTING ... MORE POWER ... A COMPLETE SYSTEM!

The OAC competition Vertex magneto is just the ticket for High Performance engines, it is very compact and lightweight. It is completely self-contained and operates at ignition distributor speed (one-half engine speed). Vertex is entirely independent of the battery as it generates its own high tension alternating current and its sophisticated design incorporates an internal coil. No complicated installation procedures, simple, quick and easy replacement without any engine modification necessary. Installed in the engine in the same manner as the battery ignition distributor.

Vertex magnetos eliminate two, three or more components required for ignition. Vertex equipped hand-cranked engines eliminate the need for a battery, coil, alternator, regulator, starter and associated wiring, for a substantial weight savings. Applications are unlimited. Vertex can be adapted to most odd or even-fire four cycle 4 and 8 cylinder engines. Uses are varied and even include spark-ignited diesel engines converted to run on gas or alcohol.

The OXC super competition Vertex magneto, rugged and dependable like its competition predecessor, has been developed to provide maximum voltage output with a long duration spark; the spark needed to initiate a solid flame front in the combustion chamber. It has been designed for engines using superchargers, exotic fuels and high cylinder combustion pressures.

The distributor head is made of a superior dielectric material which prevents cross-firing, resists tracking and insures full voltage potential to the spark plugs.

The modern external coil with space age core is solidly potted and can be mounted in any position.

Vertex Magnetos - the most winning ignition system in racing history!

NOTE: When ordering, be sure to specify YEAR, MAKE and MODEL of engine. Also be sure to note regular or tail block and any non-factory specifications.

MOST POPULAR OAC & OXC VERTEX MAGNETO MODELS

Application	Advance	OAC	OXC	Bronze Gear	Steel Gear
		Internal Coil P/N	External Coil P/N		
Chevy V8	12 Degree	701000	706000	930910	930050 w/.491" Shaft Diameter
Chevy V8	Fixed	701010	706010	930910	930050 w/.491" Shaft Diameter
Ford V8 / 351 / 460	12 Degree	702000*		930950 (C)	930740 (C) w/.531 Shaft Diameter
Ford V8 / 351 / 460	Fixed	702010*		930940 (W)	930790 (W) w/.531 Shaft Diameter
Ford Flat Head	10 Degree	702060		N/A	930160
Volkswagon	12 Degree	704000			
Volkswagon	Fixed	704010			

* Gears for Ford applications are sold separately. Specify Cleveland (C) or Windsor (W) motor.
Note: Chevy Magnetos come standard with bronze gear. If steel gear is required, please specify.





OAC TUNE-UP KIT
Part No. 906660



OXC SMALL CAP KIT
Part No. 906690



OXC LARGE CAP KIT
Part No. 906700

TUNE-UP PARTS

CYLINDER/TYPE	CAP	ROTOR	POINT SET	CONDENSER
8 Cyl OAC Cap	916550	916402	906850	912100
8 Cyl OXC Small Cap	927500	927450	906850	912100
8 Cyl OXC Large Cap	926000	926030	906850	912100
8 Cyl OXS Cap	916551	916402	906850	912100
6 Cyl OAC Cap	916530	916401	906850	912100
4 Cyl OAC Cap	916510	916401	906850	912100
VW Cap	916570	916401	906850	912100

MAGNETO SERVICE TOOLS & TIMERS

Service tools designed to make servicing the Vertex Magneto easier and more convenient.

- DEGREE PLATE TOOL Part No. 603940
- CAM WRENCH & POINTER Part No. 603950
- LOCATING PIN Part No. 607720
- BASE NUT DRIVER Part No. 616710
- CAM NUT DRIVER Part No. 616720



MAGNETO TIMERS

A new concept utilizing the latest digital integrated circuitry. 100% solid state with bright L.E.D. readout. Compact 3/4-inch x 3-inch x 5-inch size. This unit measures the change of inductance in the magneto coil and will not give a false reading. Can also be used as a relay coil tester to determine whether the coil is functioning. Powered by one 9-volt battery.

- SINGLE MAG TIMER
Part No. 607980





916810

602900

1026

931120

PROTECTIVE COVER

A durable cover that is designed to fit snugly over the Vertex OAC magneto cap and wiring. Prevents the entrance of dirt, dust and moisture. Also provides added protection against cap breakage. Fits OAC cap only.
Part No. 925010

DEGREE RING

Easily installed around the magneto housing without removing the magneto from the engine. Provides a fixed reference when determining initial timing settings. Stainless steel non-magnetic band does not interfere with the magnetic field of magneto.
Part No. 602900

GROUNDING SWITCH

Heavy Duty toggle switch used for grounding the magneto. Switch is sealed in plastic and has an "O" ring in stem to seal out moisture and dirt. Silver contacts for dependable operation. 8-inch long wire leads. Conservative electrical ratings; 12VDC-25 amps lamp load, 35 amps inductive load.
Part No. 1026

SHIM SET

Insure correct vertical clearance on Chevy V8 engines. Set includes .015, .030 and .060 shims.
Part No. 931120



926720

DISTRIBUTOR/MAGNETO HOLD DOWN CLAMP

These billet aluminum clamps are manufactured to insure proper and secure clamping. They are designed to clamp evenly on the distributor or magneto without any side loading.
Part No. 926720 Chevy Magneto/Distributor



918030

918050

12-VOLT RELAY SWITCH

For street use, allows magneto to be controlled by stock ignition key switch.
Part No. 925010 (Not shown)

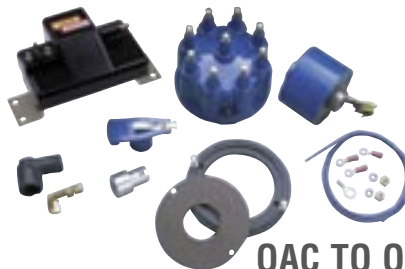
ADVANCE WEIGHT & LOCKOUT KITS

- Part No. 918030 Fixed Advance
- Part No. 918050 12 Degree Advance
- Part No. 918070 6 Degree Quick Advance (not shown)

CONVERSION KITS



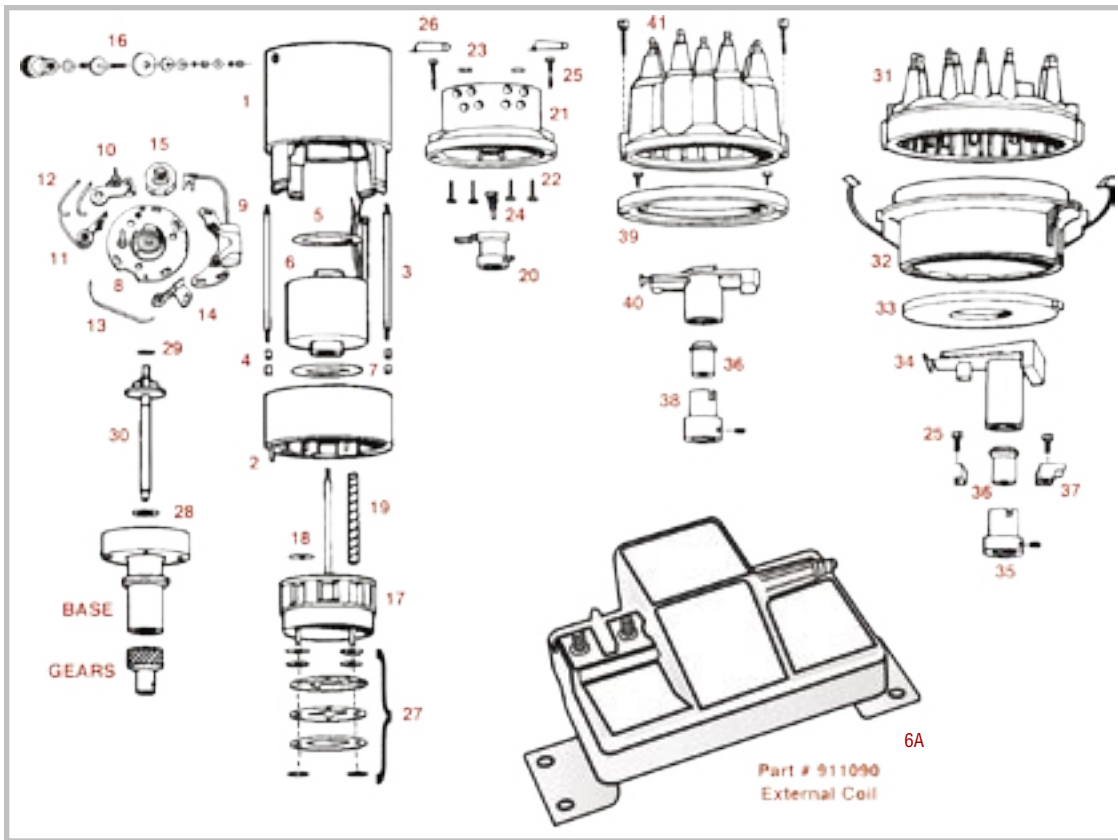
OAC TO OXC LARGE CAP
Part No. 916862



OAC TO OXC SMALL CAP
Part No. 916860

OAC TO OXS CAP
Part No. 916861





Position Number	Part Number	Description	Position Number	Part Number	Description
1	910100	Housing, 4 cyl.	12	913002	Reinforcing Spring, 5/pkg
1	910120	Housing, 8 cyl.	13	913110	Connector Strap, 5/pkg
2	910200	Dowel Pin, 20/pkg	NS	913500	Oil Felt, 25/pkg
3	910500	Stud, 10/pkg	14	913600	Oil Wiper Assembly, 5/pkg
4	910600	Taper Nut, 20/pkg	15	913700	Breaker Cam 4 cyl., Left Hand
5	911001	Insulating Washer-Coil 3mm, 10/pkg	15	913710	Breaker Cam 4 cyl., Right Hand
5	911002	Insulating Washer-Coil 7mm, 10/pkg	15	913740	Breaker Cam 8 cyl., Left Hand
6	911070	Coil, OXC Hi Amp, Tall Mag (internal)	15	913750	Breaker Cam 8 cyl., Right Hand
6A	911090	Coil, External OXC Magneto	NS	913900	Copper Washer, Cam, 25/pkg
6	911100	Coil, OAC Internal 4 & 6 cyl.	NS	914000	Nut, Cam, 10/pkg
6	911110	Coil, OAC Internal 8 cyl. - standard	16	906880	Ground Terminal Assembly
7	911200	Felt Washer for Coil, 10/pkg	17	915800	Rotating Magnet 4 cyl.
8	911700	Contact Breaker Plate w/bearing, 4 cyl.	17	915820	Rotating Magnet 8 cyl.
8	911720	Contact Breaker Plate w/bearing, 8 cyl.	18	915901	Fiber Washer, .5mm, 10/pkg
NS	911730	Breaker Plate Bearing	18	915902	Fiber Washer, 1.0mm, 10/pkg
NS	911800	Screw, Plate Hold, 24/pkg	18	915903	Fiber Washer, 1.5mm, 10/pkg
9	912100	Condenser Assembly	19	916000	Spring
10	912301	Fixed Point - Platinum	20	916401	Rotor w/Lock Screw Base, 4 & 6 cyl.
NS	912400	Screw, Contact Adj., 25/pkg	20	916402	Rotor w/Lock Screw Base, 8 cyl.
NS	912401	3.5 x 8mm Screw, 25/pkg	20	916403	Rotor w/o Lock Screw Base, 4 & 6 cyl.
11	912700	Contact Breaker - Platinum	20	916430	Rotor Radio Suppressor, 4 & 6 cyl.
NS	912801	Washer, Point Spacer .1mm, 25/pkg	20	916432	Rotor Radio Suppressor, 8 cyl.
NS	912802	Washer, Point Spacer .3mm, 25/pkg	21	916510	Distributor Head, 4 cyl.
NS	912803	Washer, Point Spacer .5mm, 25/pkg	21	916511	Distributor Head, 4 cyl., OXC Mag only
NS	912900	Lock Ring, 10/pkg	21	916550	Distributor Head, 8 cyl.

Position Number	Part Number	Description	Position Number	Part Number	Description
21	916551	Distributor Head, 6 cyl., OXC Mag only	29	919612	Spacer Washer, .3mm, 20/pkg
21	916570	Distributor Head, 4 cyl., Vertical (VW)	29	919613	Spacer Washer, .4mm, 20/pkg
22	916600	Screw High Tension Leads, 20/pkg	29	919614	Spacer Washer, .5mm, 20/pkg
23	916700	Number Disc Set	30		Spindle (Specify Make, Model, Engine)
NS	916810	Protective Cover (See Access.)	NS	920100	Threaded Fitting - Tach Drive
NS	916900	Spring Contact	NS	920110	Lock Plate, Tachometer Drive, 2/pkg
NS	916910	Flash Guard, OAC 8 cyl, 10/pkg	NS	920122	Tachometer Shim, .3mm, 25/pkg
NS	916911	Flash Guard, OXC 8 cyl, 10/pkg	NS	920130	Cross Shaft w/Gear - Tach Drive
NS	916920	Distributor Head Gasket	31	926000	Cap, OXC Large
24	917000	Carbon Brush & Spring, 10/pkg	32	926010	Housing to OXC Large Cap Adapter
25	917101	Screw, Distr. head Holding, 20/pkg	33	926021	Adapter Ring, OXC Large Cap
26	917400	Retaining Pin, 20/pkg	34	926030	Rotor, OXC Large Cap
27	918030	Fixed Advance Kit	35	926040	Rotor Adapter, OXC Magneto only
27	918050	12 Degree Advance Kit	36	926060	Nut Rotor Adapter, OXC Magneto only
27	918070	6 Degree Quick Advance Kit	37	926070	Clamp, OXC Magneto only
NS	918800	Felt Seal, 25/pkg	38	926460	Rotor Adapter, Small OXC Cap
28	919001	Space Washer 3mm, 25/pkg	39	926470	Cap Adapter, Small OXC Cap
28	919002	Space Washer 4mm, 25/pkg	40	927450	Rotor, Small OXC
28	919003	Space Washer 5mm, 25/pkg	41	927500	Cap, Small OXC, 8 cyl.
28	919004	Space Washer 10mm, 25/pkg	NS	917630	Collar Clamp
28	919021	Teflon Washer Thin, 25/pkg	NS	920210	"O" Ring, 25/pkg
28	919022	Teflon Washer Regular, 25/pkg	NS	920300	Snap Ring
28	919023	Teflon Washer Thick, 25/pkg	NS	920310	Woodruff Key, 10/pkg
29	919611	Spacer Washer, .2mm, 20/pkg			

VERTEX OFFERS THE FOLLOWING SERVICES:

MAGNETO REBUILD Part No. 700000

Magnetos that are not operating properly can usually be brought up to performance specifications with a basic rebuild. This procedure includes new points, condenser, rotor, ground bolt/strap and oil wiper assembly in addition to breaking the mag down, cleaning all pieces and recharging the magnets. A new coil or cap is not included in the standard/rebuild pricing.

OAC TO OXC CONVERSION Part No. 700001

Customers wanting the maximum performance from their Vertex Magneto can have their OAC magneto converted to the OXC model specifications with the external coil and larger cap. The service includes new primary internal coil, secondary coil, flash guard, rotor, cap and plated ground strap. The magneto is cleaned and the magnets are recharged in the process. The points and condenser are checked and tested then replaced at the customer's discretion if necessary.

ADVANCE CHANGE Part No. 700002

The mechanical advance in the magneto can be changed to satisfy different operating requirements. Standard advance curves are 6 - 10 - 12 degree.

CLEAN/RECHARGE MAGNETS Part No. 700003

Customers with the capability to repair their own magnetos but do not have the capability to recharge the magnets can send the magnets (removed from the magneto) to have them recharged.

BASE CHANGE Part No. 700005

Bases are available for nearly any engine so that the Vertex Magneto can be used from application to application without requiring a completely new magneto. Includes a completely new base assembly mounted on the existing magneto.

BASE REBUILD Part No. 700006

Existing bases that are worn can be reworked to new tolerances. Includes new bushing, seals, etc.

INSPECTION/TEST Part No. 700007

Magnetos are tested to new specifications and inspected for problems. They are then broken down, cleaned and the magnets recharged. The magneto is then performance tested to insure proper operation.

POLISHING MAGNETO Part No. 700009

The Vertex Magneto is disassembled then polished to a mirror-like finish. The magneto is then reassembled after polishing and, once again, performance tested to insure proper operation.