

DataTraveler® Vault - Privacy User Manual



Table of Contents

About This Manual	3
System Requirements	3
Recommendations	4
Setup (Windows Environment).....	5
Device Initialization (Windows Environment)	6
Device Usage (Windows Environment)	10
Device Options (Windows Environment).....	11
Setup (Mac Environment)	13
Device Initialization (Mac Environment)	14
Device Usage (Mac Environment)	18
Device Options (Mac Environment)	19
Device Initialization (Linux Environment)	22
Device Usage (Linux Environment)	24
Help and Troubleshooting	25
Device Lockout.....	25
Forgot Password (Windows and Mac).....	26
Drive Letter Conflict (Windows Operating Systems)	27
Error Messages.....	28
DTVP Linux Commands.....	29

About This Manual

This user manual covers the DataTraveler® Vault - Privacy (referred to simply as DTVP from this point forward) based on the factory image with no implemented customizations.

System Requirements

PC Platform

- Pentium III Processor or equivalent (or faster)
- 15MB free disk space
- USB 2.0
- Two available consecutive drive letters after the last physical drive*

PC Operating System Support

- Windows 7
- Windows Vista® SP1, SP2
- Windows XP SP2, SP3

Mac Platform

- 15MB free disk space
- USB 2.0

Operating System Support

- Mac OS X 10.5.x
- Mac OS X 10.6.x

Linux Platform

- 5MB free disk space
- USB 2.0

Operating System Support

- Linux v2.6 kernel

Certain distributions of Linux will require super-user (root) privileges in order to execute the DTVP commands properly in the terminal application window.

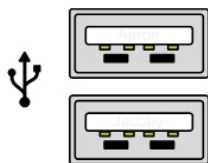


Figure 1.1 – USB 2.0 Ports, Type A



Figure 1.2 – DTVP

**Note: See 'Drive Letter Conflict' on page 27.*

Recommendations

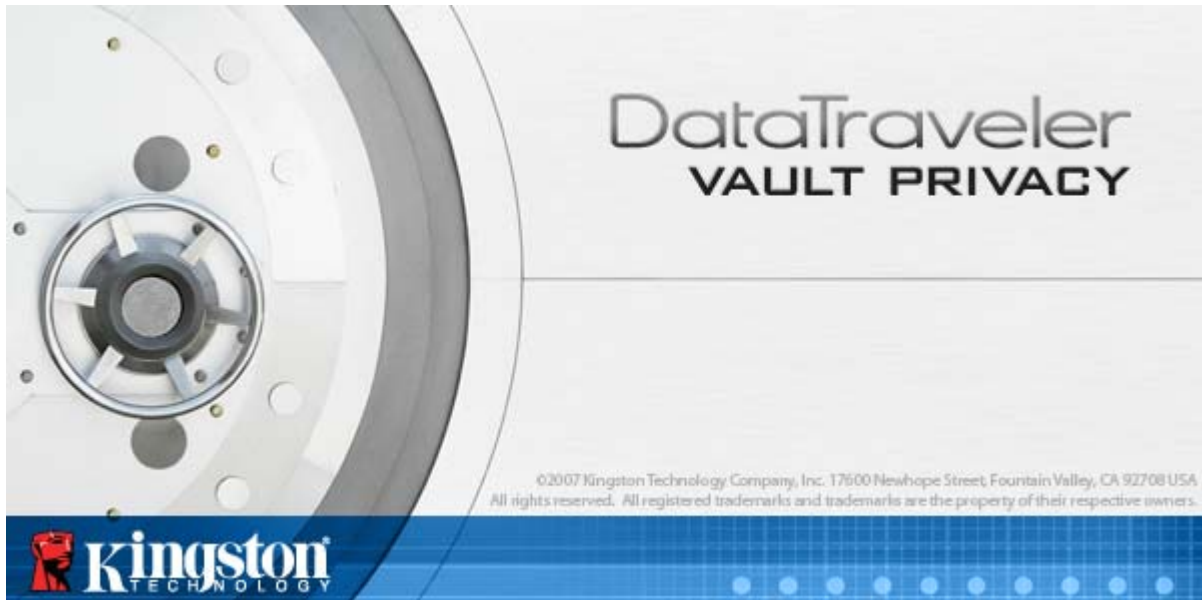
To ensure there is ample power provided to the DTVP device, insert it directly into a USB port on your notebook or desktop, as seen in **Figure 1.3**. Avoid connecting the DTVP to any peripheral device(s) that may feature a USB port, such as a keyboard or USB-powered hub, as seen in **Figure 1.4**.



Figure 1.3 – Recommended Usage



Figure 1.4 – Not Recommended



Setup (Windows Environment)

1. Insert the DTVP into an available USB port on your notebook or desktop and wait for Windows to detect it.
 - Windows XP users will receive a 'Found New Hardware' notification as seen in **Figure 2.1**.
 - Windows Vista/7 users will receive a device driver notification as seen in **Figure 2.2**.

Once the new hardware detection is complete, Windows will prompt you to begin the initialization process.

- Windows XP users can skip step 2 and go to page 6 – **Device Initialization**.
- Windows Vista/7 users will see an AutoPlay window similar to the one in **Figure 2.3**.

2. Select the option 'Run DTVP_Launcher.exe'.

If Windows does not AutoPlay, you can browse to the CD-ROM partition (**Figure 2.4**) and manually execute the DTVP_Launcher program. This will also start the initialization process.

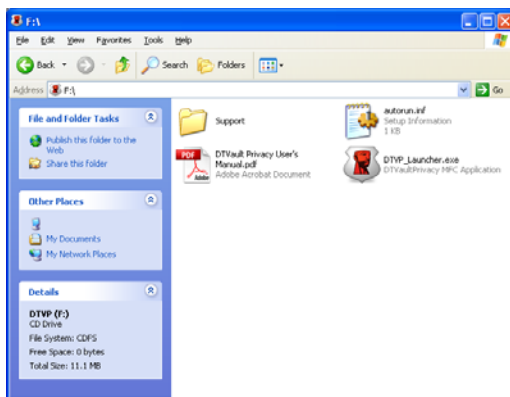


Figure 2.4 – DTVP Contents

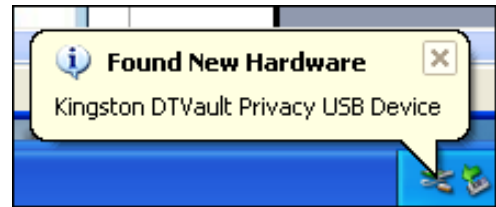


Figure 2.1 – Found New Hardware (Windows XP)

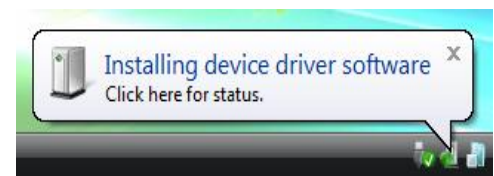


Figure 2.2 – Device Driver Installation (Windows Vista/7)



Figure 2.3 – AutoPlay Window (Windows Vista/7)

(Note: Menu options in the AutoPlay window may vary depending on what programs are currently installed on your computer. AutoRun will start the initialization process automatically.)

Device Initialization (Windows Environment)

1. Select your language preference from the drop-down menu and click 'Next' (**Figure 3.1.**)

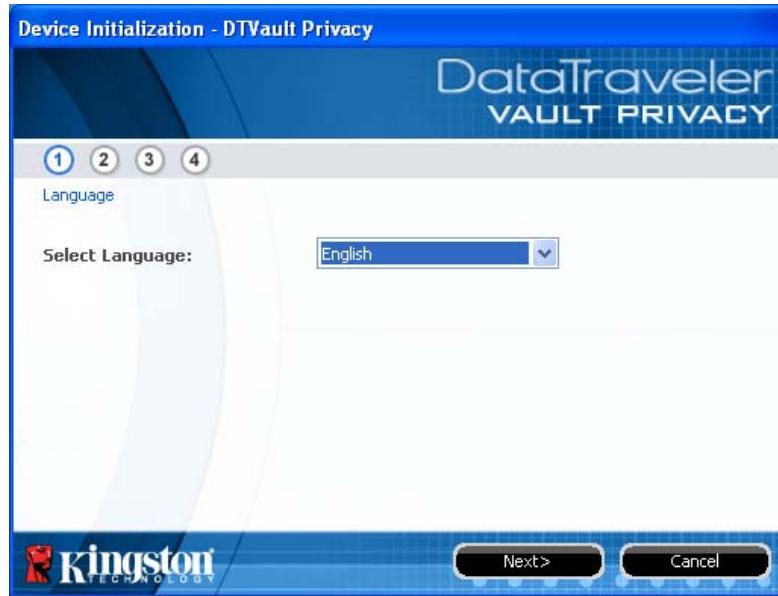


Figure 3.1 – Language Selection

2. Review the license agreement and click 'Next' (**Figure 3.2.**) (Note: You must accept the license agreement before continuing; otherwise the 'Next' button will remain disabled.)



Figure 3.2 – License Agreement

3. Create a password to protect your data on the DTVP. Enter it in the 'Password' field, then re-enter it in the 'Password Confirmation' field, as seen below in **Figure 3.3**. The password you create must meet the following criteria before the initialization process will allow you to continue:

1. Passwords must contain 6 characters or more (up to 16 characters.)
2. Passwords must contain three (3) of the following criteria options:
 - UPPER CASE, lower case, numeric, and/or special characters (!, \$, etc.)

You may also enter a password hint, but it is not a mandatory field. The hint field can be useful in providing a clue as to what the password is, should the password ever be forgotten. (*Note: The hint CANNOT be an exact match to the password.*)

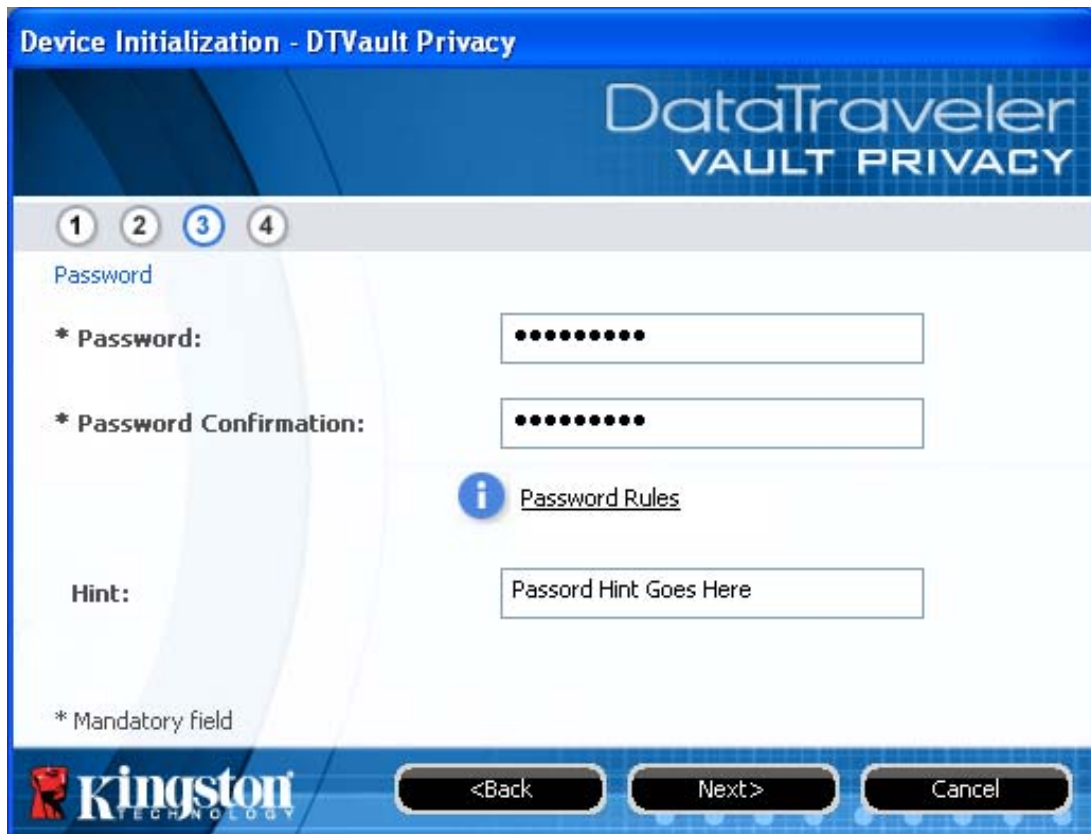
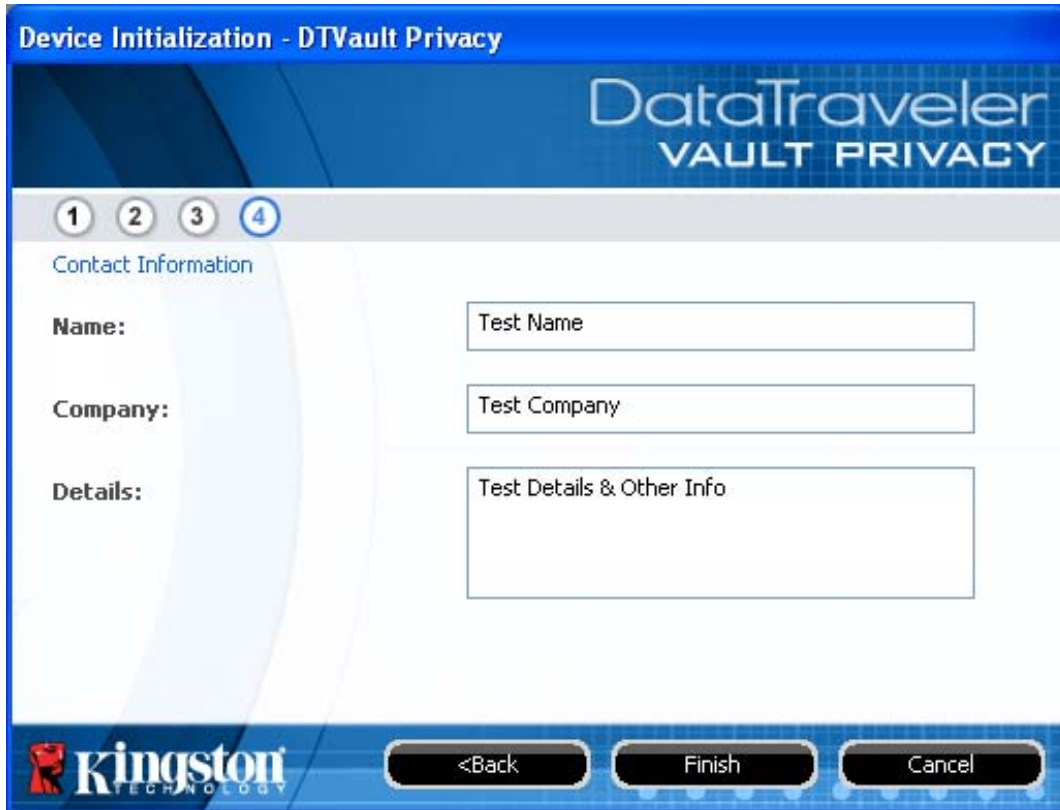


Figure 3.3 – Password Setup

4. Enter your contact information into the text boxes provided (see **Figure 3.4**) (Note: The information you enter in these fields may **NOT** contain the password string you created in Step 3. However, these fields are optional and can be left blank, if so desired.)
- The 'Name' field may contain up to 32 characters, but cannot contain the **exact** password.
 - The 'Company' field may contain up to 32 characters, but cannot contain the **exact** password.
 - The 'Details' field may contain up to 156 characters, but cannot contain the **exact** password.



The screenshot shows a software interface titled "Device Initialization - DTVault Privacy" for "DataTraveler VAULT PRIVACY". It features a progress indicator with four steps, where step 4 is active. The "Contact Information" section contains three text input fields: "Name:" with the text "Test Name", "Company:" with "Test Company", and "Details:" with "Test Details & Other Info". At the bottom, there are three buttons: "<Back", "Finish", and "Cancel". The Kingston Technology logo is visible in the bottom left corner.

Figure 3.4 – Contact Information

5. Click 'Finish' to complete the device initialization process.

The DTVP will now format the secure data partition (**Figure 3.5**) and notify you when it is complete (**Figure 3.6**.)



Note: If operating under Windows XP in Non-Admin mode, the ‘Format’ routine can take up to a minute.*

6. Click ‘OK’ to continue.



Figure 3.5 – Formatting DTVP



Figure 3.6 – Format Complete

Initialization complete.

**Note: Times may vary based on system hardware and the capacity of the DTVP drive.*

Device Usage (Windows Environment)

Once the DTVP has been initialized, you can access the secure data partition and utilize the device options by logging into the device with your password. To do so, follow these steps:

1. Insert the DTVP into a USB port on your notebook or desktop and enter your password (see **Figure 4.1**.)
2. Once you've typed your password, click the 'Login' button to continue.
 - If the correct password is entered, the DTVP will unlock and you can begin using the device.

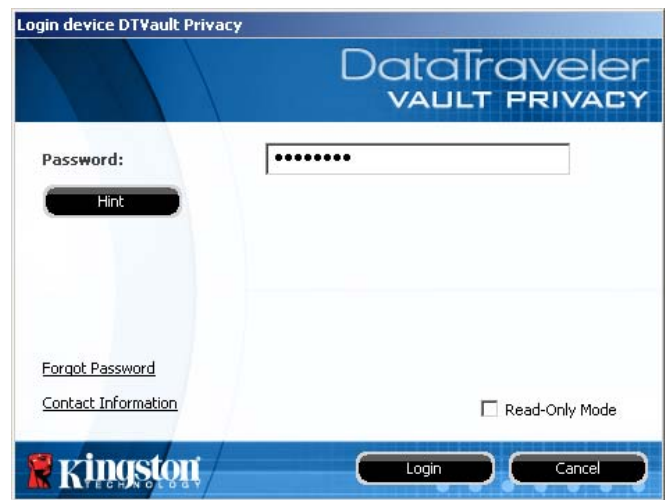


Figure 4.1 – Login Window

- If an incorrect password is entered, an error message will appear just below the 'Hint' field, indicating a login failure.

(NOTE: During the login process, if a bad password is entered, you will be given another opportunity to enter the correct password; however, there is a built-in security feature that tracks the number of failed login attempts. If this number reaches the pre-configured value of 10 failed attempts, the DTVP will lock and require a device format of the secure data partition prior to next use. **THIS MEANS THAT ALL DATA STORED ON THE DTVP WILL BE ERASED.** For more details on this feature, see 'Device Lockout' on page 20.)*

3. You may unlock the secure data partition in read-only mode, sometimes referred to as "write-protect mode", by selecting the checkbox labeled 'Read-Only Mode' prior to logging into the device. Once authenticated under read-only, you will be allowed to open or view content on the DTVP, but not update, change, or erase content while in this mode. (Note: Read-only mode will also prevent the format option from appearing in the DTVP menu that later appears on page 11.)

If you are currently logged in under read-only mode and wish to unlock the device with full read/write access to the secure data partition, you must shutdown DTVP (see page 12) and log back in, leaving the 'Read-Only Mode' checkbox unchecked during authentication.

**Note: Once you authenticate to the device successfully, the failed login counter will reset.*

Device Options (Windows Environment)

While you are logged into the device, there will be a 'DTVP' icon located in the right-hand corner of the Windows taskbar (**Figure 5.1**). (Note: Windows 7 users will need to click on the up-arrow button in the taskbar in order to access the 'DTVP' icon (**Figure 5.2**.)

Clicking once on the DTVP icon will display the following menu:



Figure 5.1 – DTVP icon in taskbar

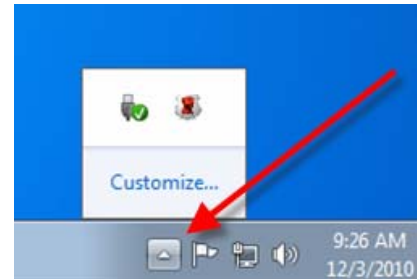


Figure 5.2 – DTVP icon in taskbar (Windows 7 users)

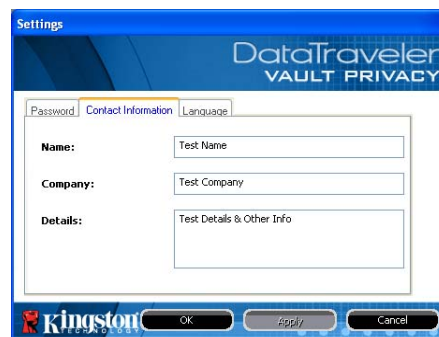
DTVault Privacy Settings

- Allows you to change your password and/or hint (**Figure 5.3**)
- Allows you to add/view/change your contact information (**Figure 5.4**)
- Allows you to change your current language selection (**Figure 5.5**)

(Note: For security purposes, your current DTVP password is required to update and/or modify any of these settings.)



**Figure 5.3
Change Password**



**Figure 5.4
Contact Information**



**Figure 5.5
Select Language**

Browse DTVault Privacy

- Allows you to browse the contents of the secure data partition while you are logged in

Format DTVault Privacy*

- Allows you to format the secure data partition (Warning: All data will be erased.) (**Figure 5.6**)

Online Support (Requires Internet access)

- Opens your Internet browser and navigates to <http://www.kingston.com/support/> where you can access additional support information

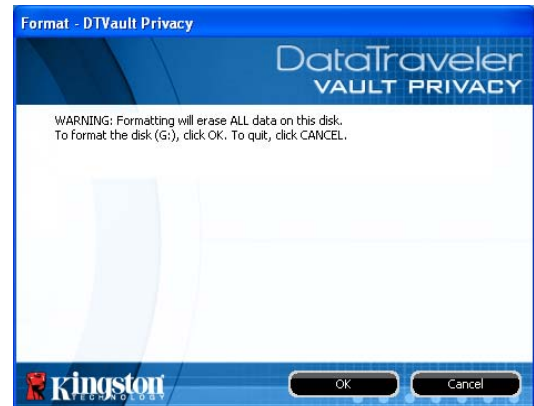


Figure 5.6 – Format Warning

About DTVault Privacy

- Provides specific details about the DTVP, including Application and Firmware version information (**Figure 5.7**)

Shutdown DTVault Privacy

- Properly shuts down the DTVP, allowing you to safely remove it from your system



Figure 5.7 – About DTVP

**Note: Your current DTVP password is required in Windows Vista and Windows 7*

-Windows Section Complete-

Setup (Mac Environment)

Insert the DTVP into an available USB port on your notebook or desktop and wait for the Mac operating system to detect it. When it does, you will see a DTVP volume appear on the desktop, as seen in **Figure 6.1**.



Figure 6.1 – DTVP

1. Double-click the DTVP CD-ROM icon.
2. Double-click the Mac folder found in the window displayed in **Figure 6.2**.
3. Double-click the DTVP application icon found in the window displayed in **Figure 6.3**. This will start the initialization process.

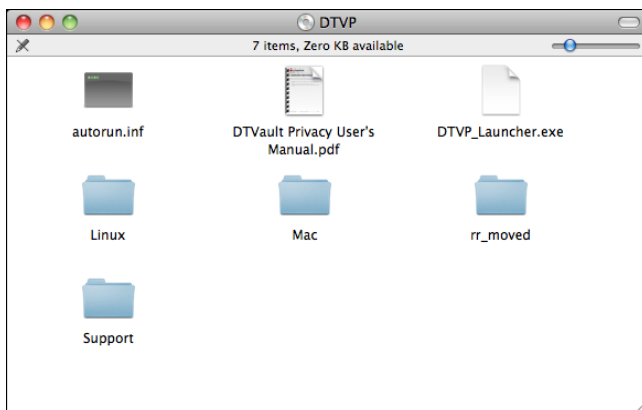


Figure 6.2 – DTVP Contents

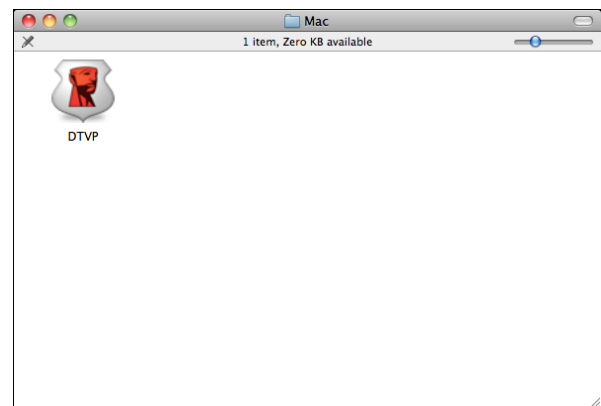
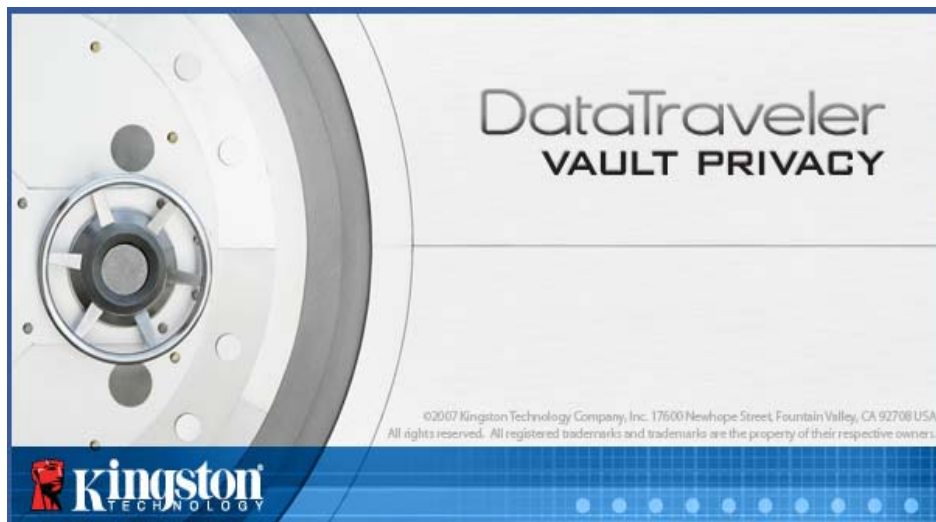


Figure 6.3 – DTVP Application



Device Initialization (Mac Environment)

1. Select your language preference from the drop-down menu and click 'Next' (**Figure 7.1.**)



Figure 7.1 – Language Selection

2. Review the license agreement and click 'Next' (**Figure 7.2.**) (Note: You must accept the license agreement before continuing; otherwise the 'Next' button will remain disabled.)

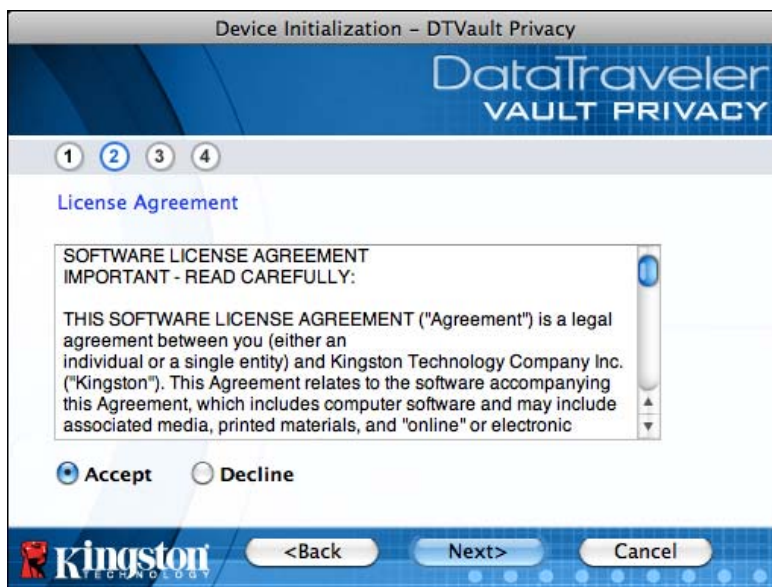
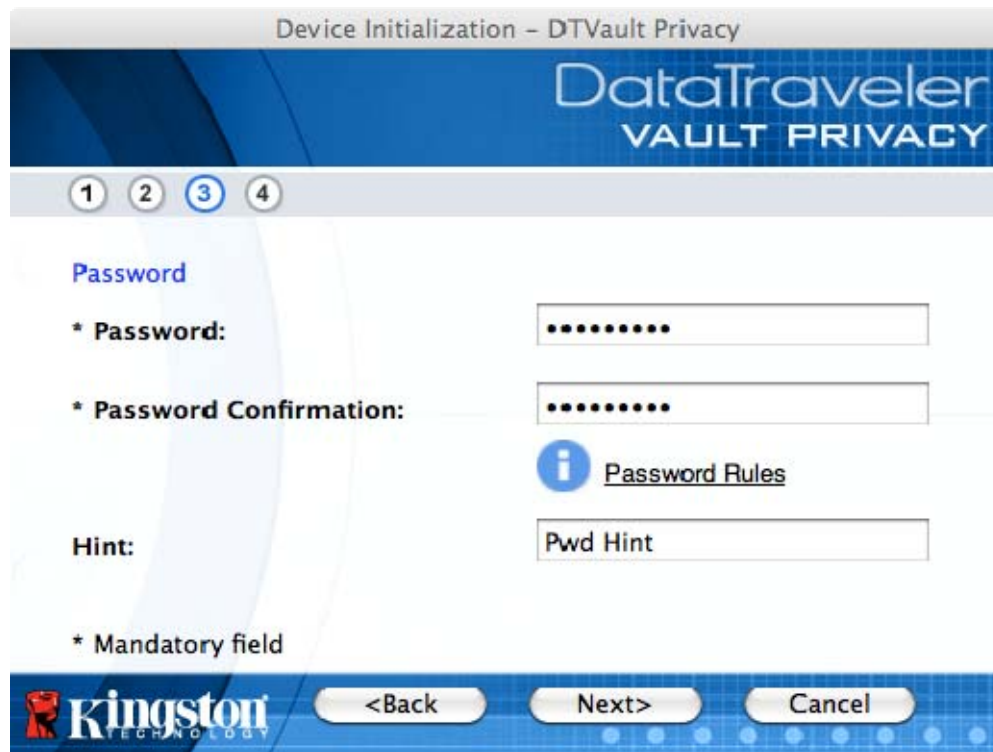


Figure 7.2 – License Agreement

3. Create a password to protect your data on the DTVP. Enter it in the 'Password' field, then re-enter it in the 'Password Confirmation' field, as seen below in **Figure 7.3**. The password you create must meet the following criteria before the initialization process will allow you to continue:

1. Passwords must contain 6 characters or more (up to 16 characters.)
2. Passwords must contain three (3) of the following criteria options:
 - UPPER CASE, lower case, numeric, and/or special characters (!, \$, etc.)

You may also enter a password hint, but it is not a mandatory field. The hint field can be useful in providing a clue as to what the password is, should the password ever be forgotten. (*Note: The hint CANNOT be an exact match to the password.*)



Device Initialization - DTVault Privacy

DataTraveler
VAULT PRIVACY

1 2 3 4

Password

* Password:

* Password Confirmation:

[Password Rules](#)

Hint:

* Mandatory field


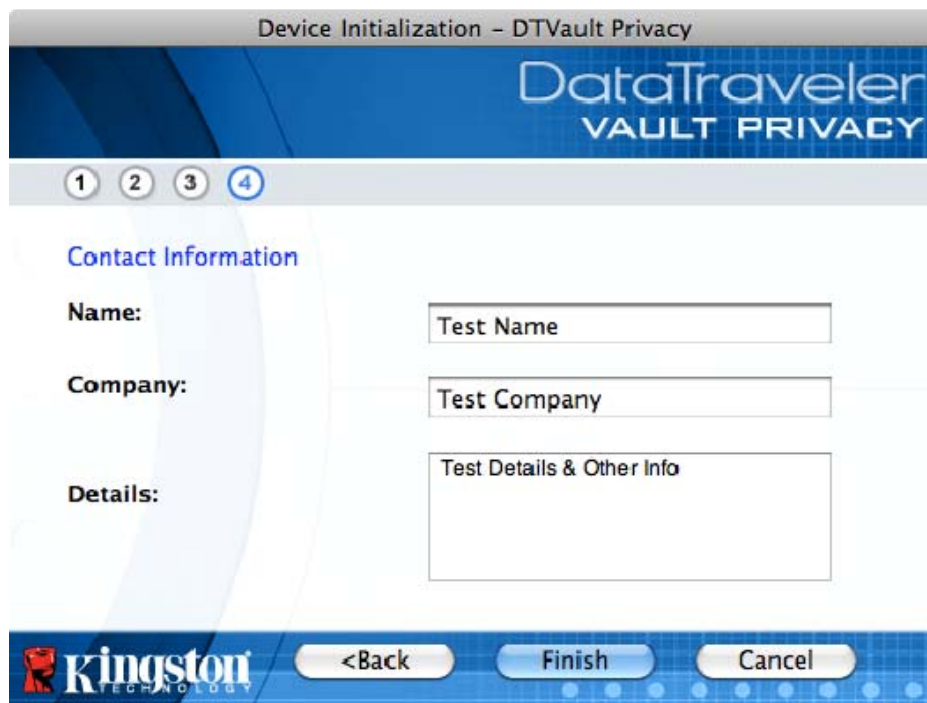
 <Back Next> Cancel

Figure 7.3 – Password Setup

4. Enter your contact information into the text boxes provided (see **Figure 7.4**) (Note: The information you enter in these fields may **NOT** contain the password string you created in Step 3. However, these fields are optional and can be left blank, if so desired.)
- The 'Name' field may contain up to 32 characters, but cannot contain the **exact** password.
 - The 'Company' field may contain up to 32 characters, but cannot contain the **exact** password.
 - The 'Details' field may contain up to 156 characters, but cannot contain the **exact** password.



The screenshot displays the 'Device Initialization - DTVault Privacy' window. At the top, the 'DataTraveler VAULT PRIVACY' logo is visible. Below the logo, a progress indicator shows four steps, with the fourth step (4) highlighted. The main section is titled 'Contact Information' and contains three input fields: 'Name:' with the text 'Test Name', 'Company:' with the text 'Test Company', and 'Details:' with the text 'Test Details & Other Info'. At the bottom, there are three buttons: '<Back', 'Finish', and 'Cancel'. The Kingston logo is also present in the bottom left corner.

Figure 7.4 – Contact Information

5. Click 'Finish' to complete the device initialization process.

The DTVP will now format the secure data partition (**Figure 7.5**) and notify you when it is complete (**Figure 7.6**.)

6. Click 'OK' to continue.

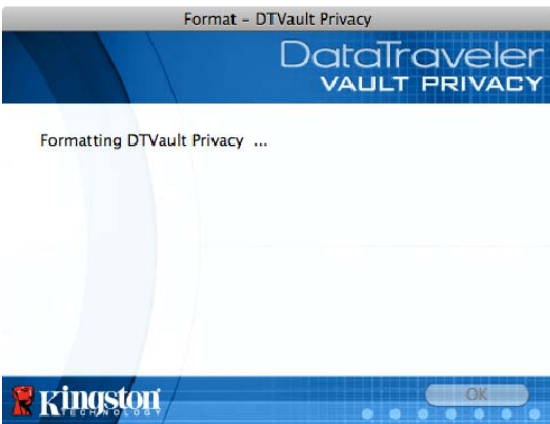


Figure 7.5 – Formatting DTVP

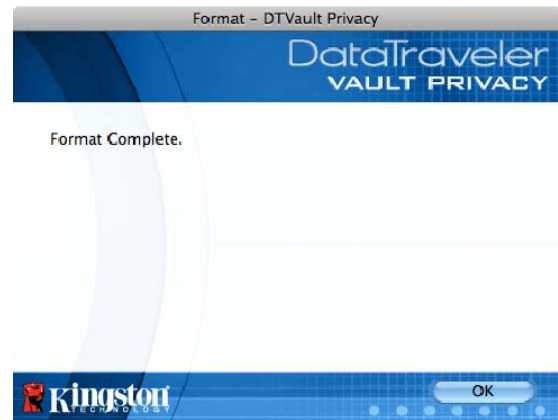


Figure 7.6 – Format Complete

Initialization complete.

Device Usage (Mac Environment)

Once the DTVP has been initialized, you can access the secure data partition and utilize the device options by logging into the device with your password. To do so, follow these steps:

1. Insert the DTVP into a USB port on your notebook or desktop and enter your password (see **Figure 8.1**.)
2. Once you've typed your password, click the 'Login' button to continue.
 - If the correct password is entered, the DTVP will unlock and you can begin using the device.



Figure 8.1 – Login Window

- If an incorrect password is entered, an error message will appear just below the 'Hint' field, indicating a login failure.

(NOTE: During the login process, if a bad password is entered, you will be given another opportunity to enter the correct password; however, there is a built-in security feature that tracks the number of failed login attempts. If this number reaches the pre-configured value of 10 failed attempts, the DTVP will lock and require a device format of the secure data partition prior to next use. **THIS MEANS THAT ALL DATA STORED ON THE DTVP WILL BE ERASED.** For more details on this feature, see 'Device Lockout' on page 20.)*

4. You may unlock the secure data partition in read-only mode, sometimes referred to as "write-protect mode", by selecting the checkbox labeled 'Read-Only Mode' prior to logging into the device. Once authenticated under read-only, you will be allowed to open or view content on the DTVP, but not update, change, or erase content while in this mode. (Note: Read-only mode will also prevent the format option from appearing in the DTVP menu that appears on page 19.)

If you are currently logged in under read-only mode and wish to unlock the device with full read/write access to the secure data partition, you must shutdown DTVP and log back in, leaving the 'Read-Only Mode' checkbox unchecked prior to login.

* Once you authenticate to the device successfully, the failed login counter will reset.

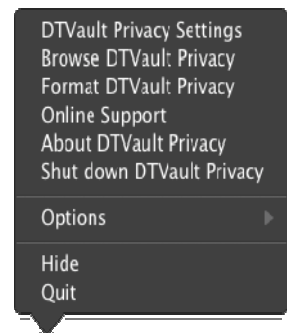
Device Options (Mac Environment)

While you are logged into the device, there will be a 'DTVP_Launcher' icon located in the Mac OS X Dock as seen in **Figure 9.1** below:



Figure 9.1 – DTVP Icon In Mac OS X Dock

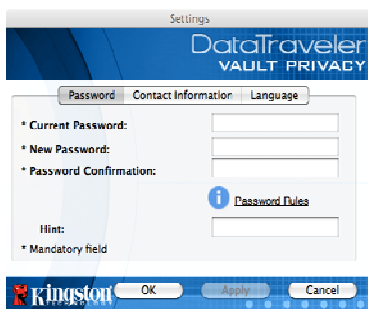
Holding down the 'control' key on your keyboard and clicking once on the 'DTVP_Launcher' icon will display the menu shown in **Figure 9.2** to the right.



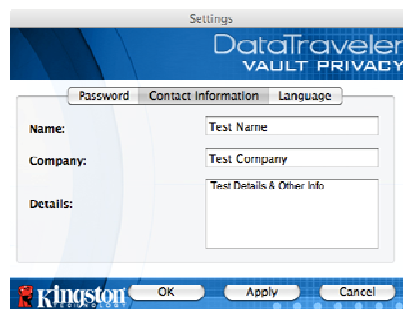
**Figure 9.2
DTVP Options**

DTVP Settings

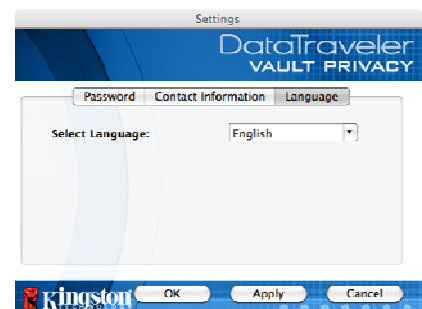
- Allows you to change your password and/or hint (**Figure 9.3**)
- Allows you to add/view/change your contact information (**Figure 9.4**)
- Allows you to change your language preference (**Figure 9.5**)



**Figure 9.3
Change Password**



**Figure 9.4
Contact Information**



**Figure 9.5
Select Language**

(Note: For security purposes, your current DTVP password is required to update and/or modify any of these settings.)

Browse DTVP

- Allows you to browse the contents of the secure data partition while you are logged in

Format DTVP

- Allows you to format the secure data partition (Warning: All data will be erased.) (**Figure 9.6**)

Online Support (Requires Internet access)

- Opens your Internet browser and navigates to <http://www.kingston.com/support/> where you can access additional support information

About DTVP

- Provides specific details about the DTVP, including Application and Firmware version information (**Figure 9.7**)

Shutdown DTVP

- Properly shuts down the DTVP, allowing you to safely remove it from your system

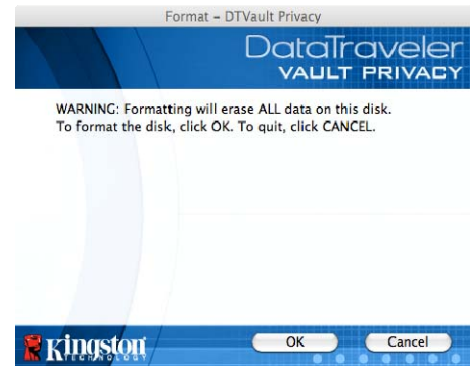


Figure 9.6 – Format Warning

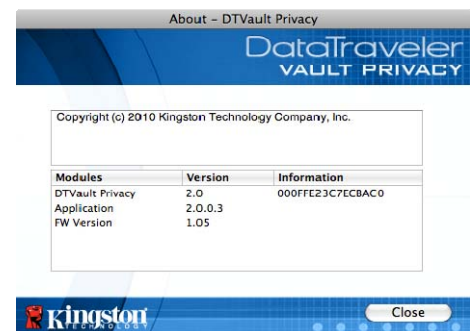


Figure 9.7 – About DTVP

-Mac Section Complete-

Setup (Linux Environment)

(NOTE: With the various distributions of Linux available today, the 'look and feel' of their interfaces may vary from one version to the next. However, the general command set used in the terminal application is very similar and can be referenced in the Linux instructions that follow. **The screenshot examples in this section were created in a Linux Ubuntu v10.x environment.**)



Certain distributions of Linux will require super-user (root) privileges in order to execute the DTVP commands properly in the terminal application window.

Insert the DTVP into an available USB port on your notebook or desktop and wait for the Linux operating system to detect it. When it does, a DTVP volume icon will appear* on the desktop, as seen in **Figure 10.1**.



Figure 10.1 – DTVP Volume

The DTVP comes with 5 commands that can be used in Linux:

dtvp_about, dtvp_forgotpassword, dtvp_initialize, dtvp_login, and dtvp_logout

(Note: To execute these commands, you must open a "Terminal" application window and navigate to the folder where each of the files exist. Each command must be preceded by the following two characters: './' (a period and a forward slash.)

For 32-bit users, open a "Terminal" application window and change the current directory to **/media/DTVP/linux/linux32\$** by typing the following command at the prompt:

`cd /media/DTVP/linux/linux32` (and then press **ENTER**.)

For 64-bit users, open a "Terminal" application window and change the current directory to **/media/DTVP/linux/linux64\$** by typing the following command at the prompt:

`cd /media/DTVP/linux/linux64` (and then press **ENTER**.)

Note: If the DTVP volume is not loaded automatically by the operating system, you will need to load the volume manually in a terminal window using the Linux 'mount**' command. Please refer to the Linux documentation for your specific OS distribution or favorite on-line support site for proper syntax and command options.*

Device Initialization (Linux Environment)

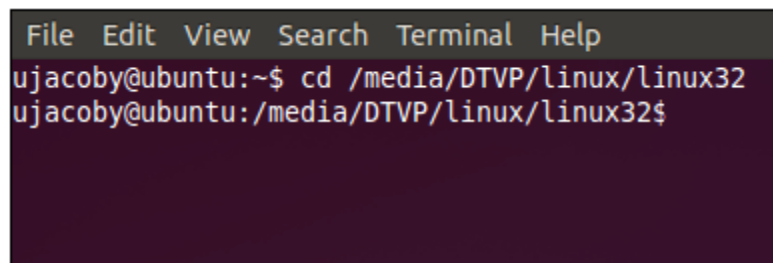
Once the DTVP is connected to your computer and recognized by the operating system, the device will need to be initialized prior to first use. To do so, open the ‘Terminal’ application (or command-line window) and follow these steps:

(Note: The screenshots and instructions in this section utilize the **linux32** folder (signifying 32-bit) for purposes of demonstrating use of the DTVP device in the Linux OS. Keep in mind if you are using the 64-bit version of Linux, simply navigate to and use the respective 64-bit folder in place of the 32-bit folder, i.e. **linux64** rather than **linux32**.)

1. Change directory to the DTVP volume by typing the following command at the terminal prompt (as seen in **Figure 10.2**):

```
cd /media/DTVP/linux/linux32
```

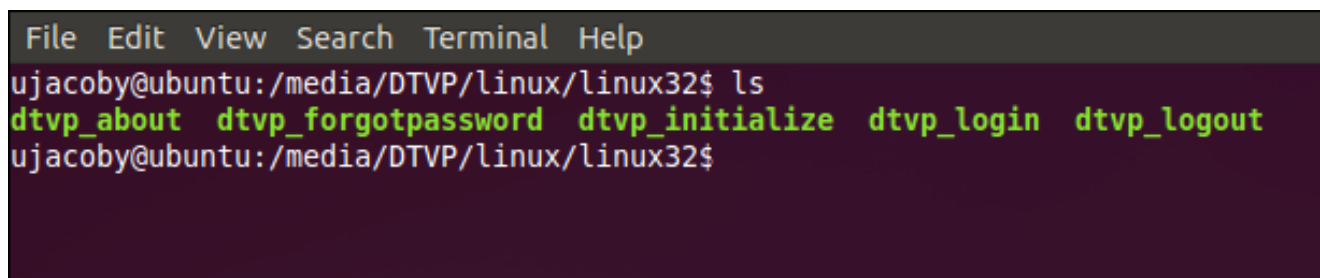
(Note: Commands and folder (directory) names are case-sensitive, i.e. ‘linux32’ is NOT the same as ‘Linux32.’ Syntax must also be typed exactly as shown.)



```
File Edit View Search Terminal Help
ujacoby@ubuntu:~$ cd /media/DTVP/linux/linux32
ujacoby@ubuntu:/media/DTVP/linux/linux32$
```

Figure 10.2 – Command-Line Navigation

2. Type **ls** (as in list) at the current prompt and press **ENTER**. This will provide you with a list of files and/or folders in the **/media/DTVP/linux/linux32** (or **linux64**) folder. You will see the five DTVP commands listed, **dtvp_about**, **dtvp_forgotpassword**, **dtvp_initialize**, **dtvp_login**, and **dtvp_logout** as seen in **Figure 10.3**.

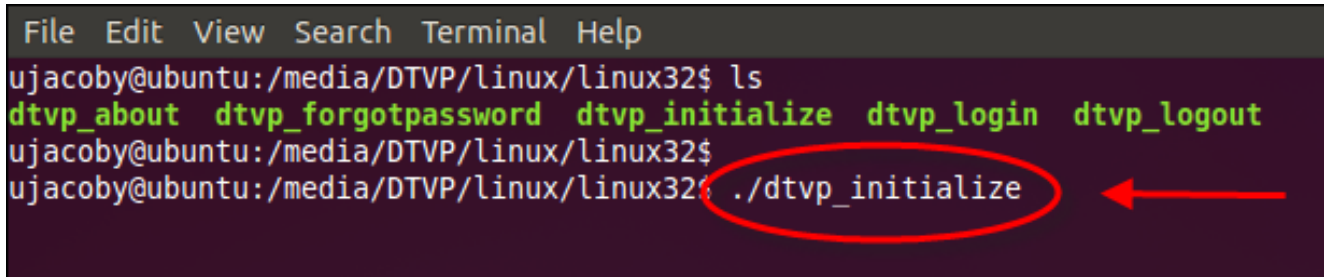


```
File Edit View Search Terminal Help
ujacoby@ubuntu:/media/DTVP/linux/linux32$ ls
dtvp_about dtvp_forgotpassword dtvp_initialize dtvp_login dtvp_logout
ujacoby@ubuntu:/media/DTVP/linux/linux32$
```

Figure 10.3 – List of DTVP Commands

– The Linux section in this manual is based off of the 32-bit version of Ubuntu 10.x –

3. To initialize the DTVP, type the following command at the terminal prompt and press *ENTER*: **`./dtvp_initialize`*** (Remember, commands are case-sensitive.) See *Figure 10.4*.



```
File Edit View Search Terminal Help
ujacoby@ubuntu:/media/DTVP/linux/linux32$ ls
dtvp_about dtvp_forgotpassword dtvp_initialize dtvp_login dtvp_logout
ujacoby@ubuntu:/media/DTVP/linux/linux32$
ujacoby@ubuntu:/media/DTVP/linux/linux32$ ./dtvp_initialize
```

Figure 10.4 – Executing a DTVP Command

4. After pressing *ENTER*, the license agreement will display in the terminal window. Press ‘**Y**’ to accept the license agreement and continue. (Note: If you press ‘**N**’ and do not accept the license agreement, you will be returned to the terminal prompt and unable to continue the initialization process until you repeat step 3 and press ‘**Y**’.)
5. After you accept the license agreement, you will be prompted to input (create) a password, which will be used to protect the files stored on the secure data partition. The password you create must meet the following criteria before the initialization process will allow you to continue:
 - a. Passwords must contain 6 characters or more (up to 16 characters.)
 - b. Passwords must contain three (3) of the following criteria options:
 - UPPER CASE, lower case, numeric, and/or special characters (!, \$, etc.)
6. Confirm your password by re-entering it on the command line when prompted to input it again and press *ENTER*. If the passwords match, you will be notified that the DTVP has been initialized successfully. If the passwords do not match, you will receive a message indicating that you still need to confirm the password correctly. To do so, repeat steps 3 through 6 until they do.

After creating your password, a secure data volume (partition) will appear on the desktop. This indicates that the initialization process was successful and is now complete. You may begin using the DTVP.

**Note: Certain distributions of Linux will require super-user (root) privileges in order to execute the DTVP commands properly in the terminal application window.*

Device Usage (Linux Environment)

Once the DTVP has been initialized, you can access the secure data partition by logging into the device using the DTVP password you created on page 23. To do so, follow these steps:

1. Open a 'Terminal' application window.
2. Type the following command at the terminal prompt: **cd /media/DTVP/linux/linux32**
3. With the command prompt now at **/media/DTVP/linux/linux32\$**, type the following command to login to the device: **./dtvp_login*** and press *ENTER*. (*Note: Commands and folder names are case-sensitive and syntax must be exact.*)
4. Enter for your DTVP password and press *ENTER*. After a successful login, the secure data volume will open on your desktop and you can proceed to use the DTVP.

During the login process, if a bad password is entered, you will be given another opportunity to enter the correct password by repeating step 3; however, there is a built-in security feature that tracks the number of failed login attempts. If this number reaches the pre-configured value of 10 failed attempts, the DTVP will lock and require you to initialize the device by executing the **dtvp_forgotpassword** command, prior to next use. This process will allow you to create a new password, but in order to protect the privacy of your data, the DTVP will format the secure data partition. **This means that all of your data will be lost.**

Once the **dtvp_forgotpassword** process is complete and you have successfully set up a new password, the built-in security counter that tracks failed login attempts will be reset (*Note: A successful login prior to reaching the maximum number of attempts (MaxNoA, for short) will also reset the failed-login counter.*)

When you are finished using the DTVP, log out of the device and secure your data. To do so, follow these steps:

1. Open a 'Terminal' application window.
2. Type the following command at the terminal prompt: **cd /media/DTVP/linux/linux32**
3. With the command prompt now at **/media/DTVP/linux/linux32\$**, type the following command to logout of the device properly: **./dtvp_logout*** and press *ENTER*. (*Note: Commands and folder names are case-sensitive and syntax must be exact.*)
4. Remove the DTVP from your system and store in a safe place.

**Note: Certain distributions of Linux will require super-user (root) privileges in order to execute the DTVP commands properly in the terminal application window.*

-Linux Section Complete-

Help and Troubleshooting

Device Lockout

The DTVP includes a security feature that prevents unauthorized access to the data partition once a maximum number of **consecutive** failed login attempts (*MaxNoA* for short) has been made; the default “out-of-box” configuration has a pre-configured value of 10 (no. of attempts.)

The ‘lock-out’ counter tracks each failed login and gets reset one of two ways: **1)** A successful login prior to reaching *MaxNoA* or **2)** reaching *MaxNoA* and performing a device format.*

If an incorrect password is entered, an error message will appear just below the ‘*Hint*’ field, indicating a login failure. See **Figure 11.1**.

If and when a 7th failed attempt is made, you will see an additional error message indicating you have 3 attempts left before reaching *MaxNoA* (which is set to 10 by default.) See **Figure 11.2**.

After a 10th failed login attempt, the DTVP will permanently block the data partition and require a device format prior to next use. This means that **all data stored on the DTVP will be lost** and you will need to create a new password.

This security measure limits someone (who does not have your password) from attempting countless login attempts and gaining access to your sensitive data.

If you are the owner of the DTVP and have forgotten your password, the same security measures will be enforced, including a device format.*

For more on this feature, see ‘*Forgot Password*’ on page 26.

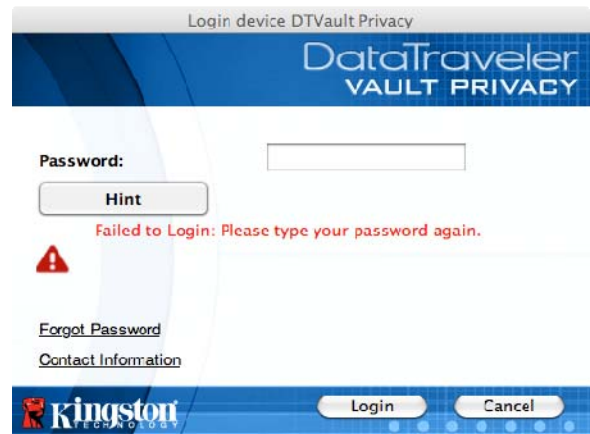


Figure 11.1 – Login Failure



Figure 11.2 – 7th Login Failure

**Note: A device format will erase ALL of the information stored on the DTVP’s secure data partition.*

Forgot Password (Windows and Mac)

If you forget your password, you can click on the 'Forgot Password' link that appears in the login window when DTVP_Launcher is executed (see **Figure 11.3**.)

This option will allow you to create a new password, but in order to protect the privacy of your data, the DTVP will be formatted. This means that all of the data stored on the secure area will be erased in the process.*

When you do click on 'Forgot Password', a message box (**Figure 11.4**) will appear and ask if you want to enter a new password prior to executing the format. At this point, you can either 1) click 'OK' to confirm or 2) click 'Cancel' to return to the login window.

If you opt to continue, you will be prompted to create a new complex password and a new hint. The hint is not a mandatory field, but it can be useful in providing a clue as to what the password is, should the password ever be forgotten.

(Note: The hint CANNOT be an exact match to the DTVP password.)

Forgot Password (Linux)

If you forget your password, you can execute the **dtvp_forgotpassword** command from the **/media/DTVP/linux/linux32\$** prompt in the "Terminal" application window. This option will allow you to create a new password, but in order to protect the privacy of your data, the DTVP will be formatted. This means that all data stored on the secure data partition will be erased in the process.

**Note: A device format will erase ALL of the information stored on the DTVP's secure data partition.*

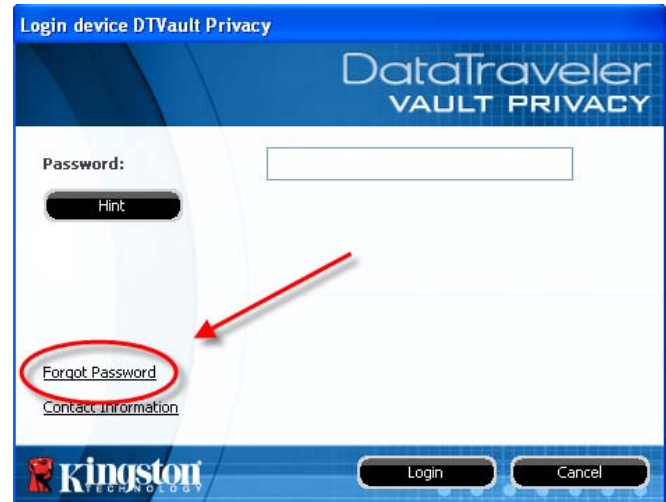


Figure 11.3 – Forgot Password

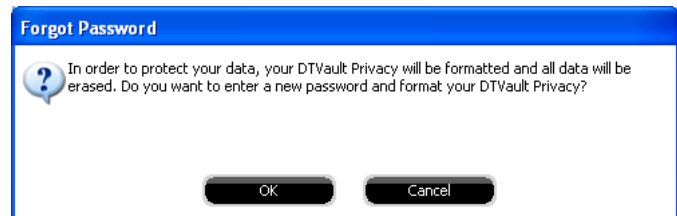


Figure 11.4 – Prompt Before Format

Drive Letter Conflict (Windows Operating Systems)

As mentioned in the 'System Requirements' section of this manual (on page 3), the DTVP requires two consecutive drive letters AFTER the last physical disk that appears before the 'gap' in drive letter assignments (see **Figure 11.5.**) This does NOT pertain to network shares because they are specific to user-profiles and not the system hardware profile itself, thus appearing available to the OS.

What this means is, Windows may assign the DTVP a drive letter that's already in use by a network share or Universal Naming Convention (UNC) path, causing a drive letter conflict. If this happens, please consult your administrator or helpdesk department on changing drive letter assignments in Windows Disk Management (administrator privileges required.)

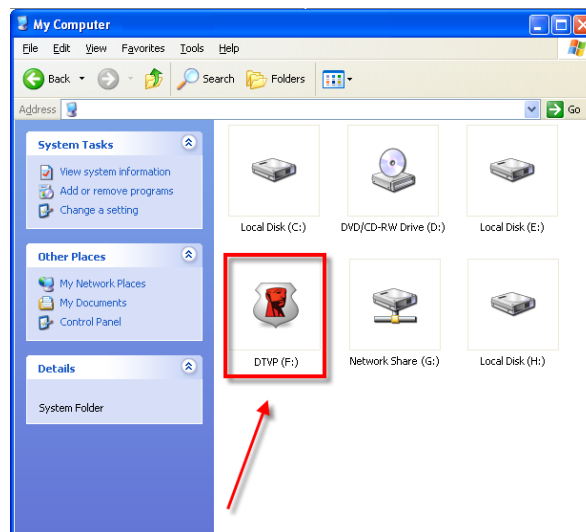


Figure 11.5 – My Computer

In this example, the DTVP uses drive F:, which is the first available drive letter after drive E: (the last physical disk before the drive letter gap.) Because letter G: is a network share and not part of the hardware profile, the DTVP may attempt to use it as its second drive letter, causing a conflict.

If there are no network shares on your system and the DTVP still won't load, it is possible that a card reader, removable disk, or other previously-installed device is holding on to a drive-letter assignment and still causing a conflict.

Please note that Drive Letter Management, or DLM, has improved significantly in Windows XP SP3, Vista, and 7, so you may not come across this issue, but if you are unable to resolve the conflict, please contact Kingston's Technical Support Department for further assistance.

Error Messages

Unable to create file – This error message will appear when attempting to **CREATE** a file or folder **ON** the secure data partition while logged in under read-only mode.

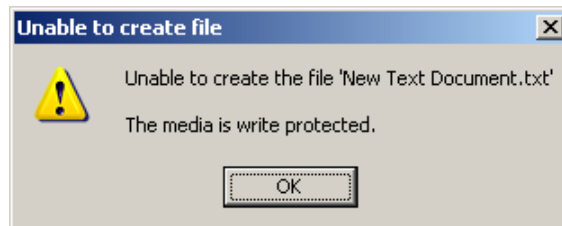


Figure 12.1 – Unable to Create File Error

Error Copying File or Folder – This error message will appear when attempting to **COPY** a file or folder **TO** the secure data partition while logged in under read-only mode.

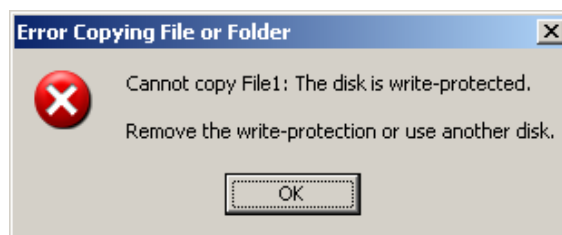


Figure 12.2 – Error Copying File or Folder Error

Error Deleting File or Folder – This error message will appear when attempting to **DELETE** a file or folder **FROM** the secure data partition while logged in under read-only mode.

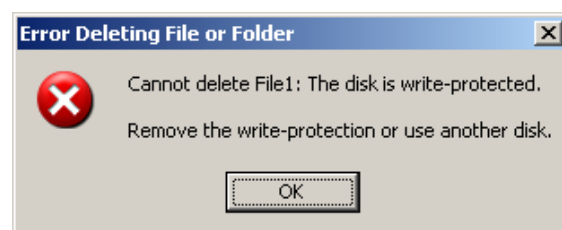


Figure 12.3 – Error Deleting File or Folder Error

If you are ever logged in under read-only mode and wish to unlock the device with full read/write access to the secure data partition, you must shutdown DTVP and log back in, leaving the 'Read-Only Mode' checkbox unchecked prior to login.

DTVP Linux Commands

Command	Syntax*	Description
dtvp_about	<i>./dtvp_about</i>	Displays serial no., firmware, and application version of DTVP Can be executed whether user is logged into the DTVP or not
dtvp_forgotpassword	<i>./dtvp_forgotpassword</i>	Resets the DTVP and allows you to create a new password Can be executed only when user is NOT logged into the DTVP device (All data stored on the secure data partition will be lost)
dtvp_initialize	<i>./dtvp_initialize</i>	Initializes the DTVP and prepares device for first use Executed prior to first use only
dtvp_login	<i>./dtvp_login</i>	Prompts for DTVP password to log user into secure data partition Can be executed only when user is NOT logged into the DTVP device and only AFTER the device has been initialized
dtvp_logout	<i>./dtvp_logout</i>	Logs user out of DTVP and closes secure data partition Can be executed only when user is logged into the DTVP device

**Note: To execute the DTVP Linux commands, you must open a "Terminal" application window and navigate to the folder where each of the files exist. Each command must be preceded by the following two characters: './' (a period and a forward slash as indicated in the table above.)*