

Jake Bernstein

Advanced Trader Sessions (ATS)

<http://www.jakebernstein.com>

800-678-5253 831-430-0600

ATS 1

Session 3

**January Effect Weekly Trigger: Status
CMC and CMC 2**

The Myth of the Golden Cross

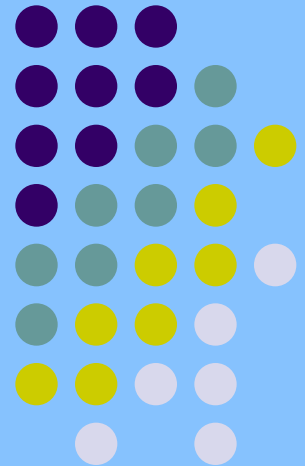
**The Path of Least Seasonal Resistance: Intro
Trading the 3x3 Channel Swing Trades**

2 February 2012

© 2012 by Jake Bernstein

<http://www.jakebernstein.com>

800-678-5253 * 831-430-0600





“Man seeks to escape himself in myth,
and does so by any means at his
disposal. Drugs, alcohol, or lies.
Unable to withdraw into himself, he
disguises himself. Lies and
inaccuracy give him a few
moments of comfort”

Business TV this week



“A very bullish indicator is now developing in the Dow Jones average. It’s called the Golden Cross. It happens when the 50 day MA crosses above the 200 day MA and its happening right now. In the past this has led to some very big moves up in the Dow Jones Average...”



ATS Goals

- Advanced concepts
- New research
- Improvements and fine tuning
- New directions
- Focus
- Patterns and procedures
- Taking trades to the next level

2nd yr Decade Pattern

January Effect: UPDATE



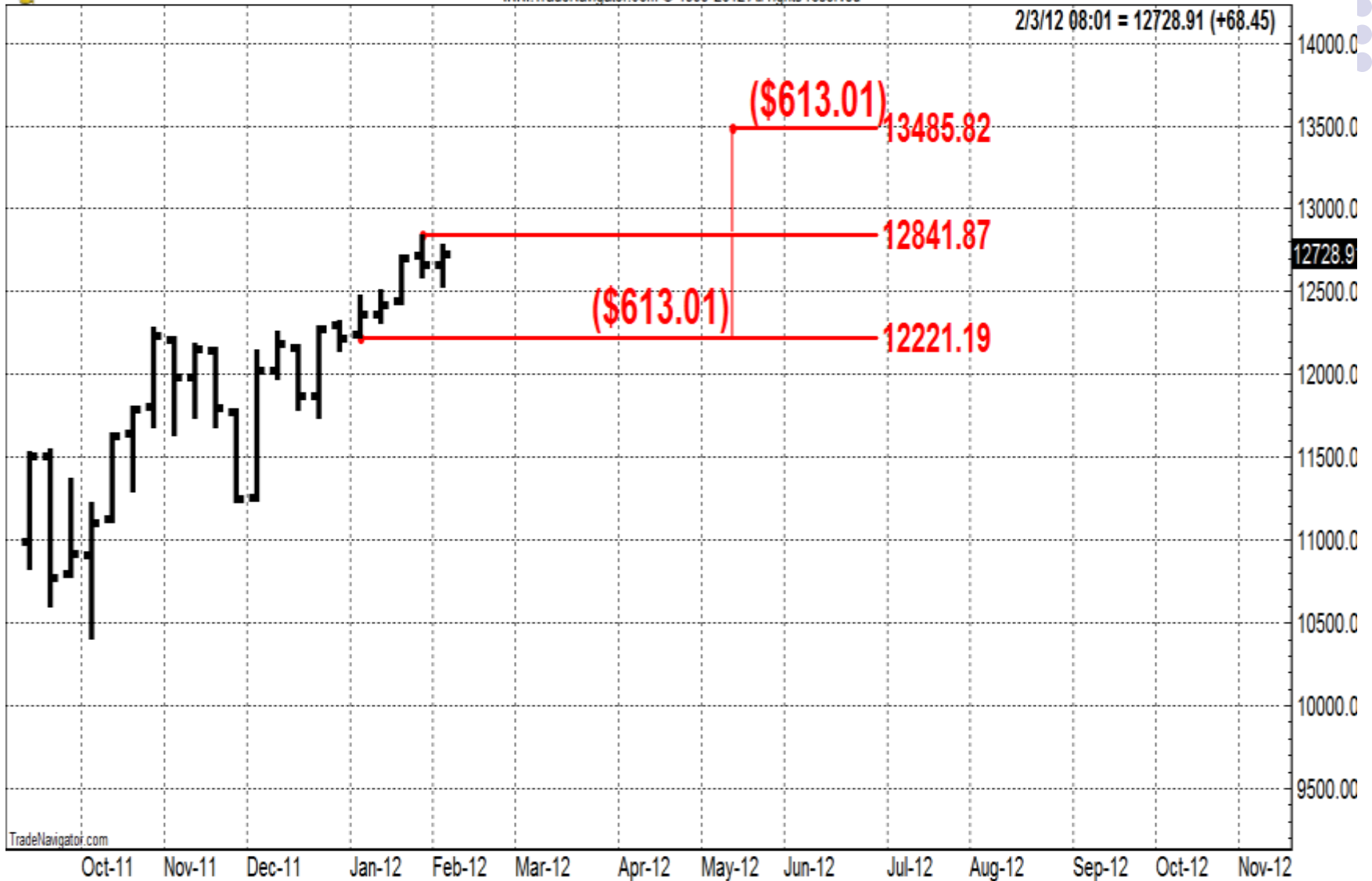
- What is the pattern? Reviewed
- Setup: Jan high / low
- Trigger: weekly close above / below
- Follow through: range of Jan
- History
- Limitations: specific to Dow Jones
- Benefits and use
- DIA, Dow Futures*, IYJ, IYY

Where we are now \$DJI



\$DJIA: Dow Jones Industrials Index (Weekly bars)

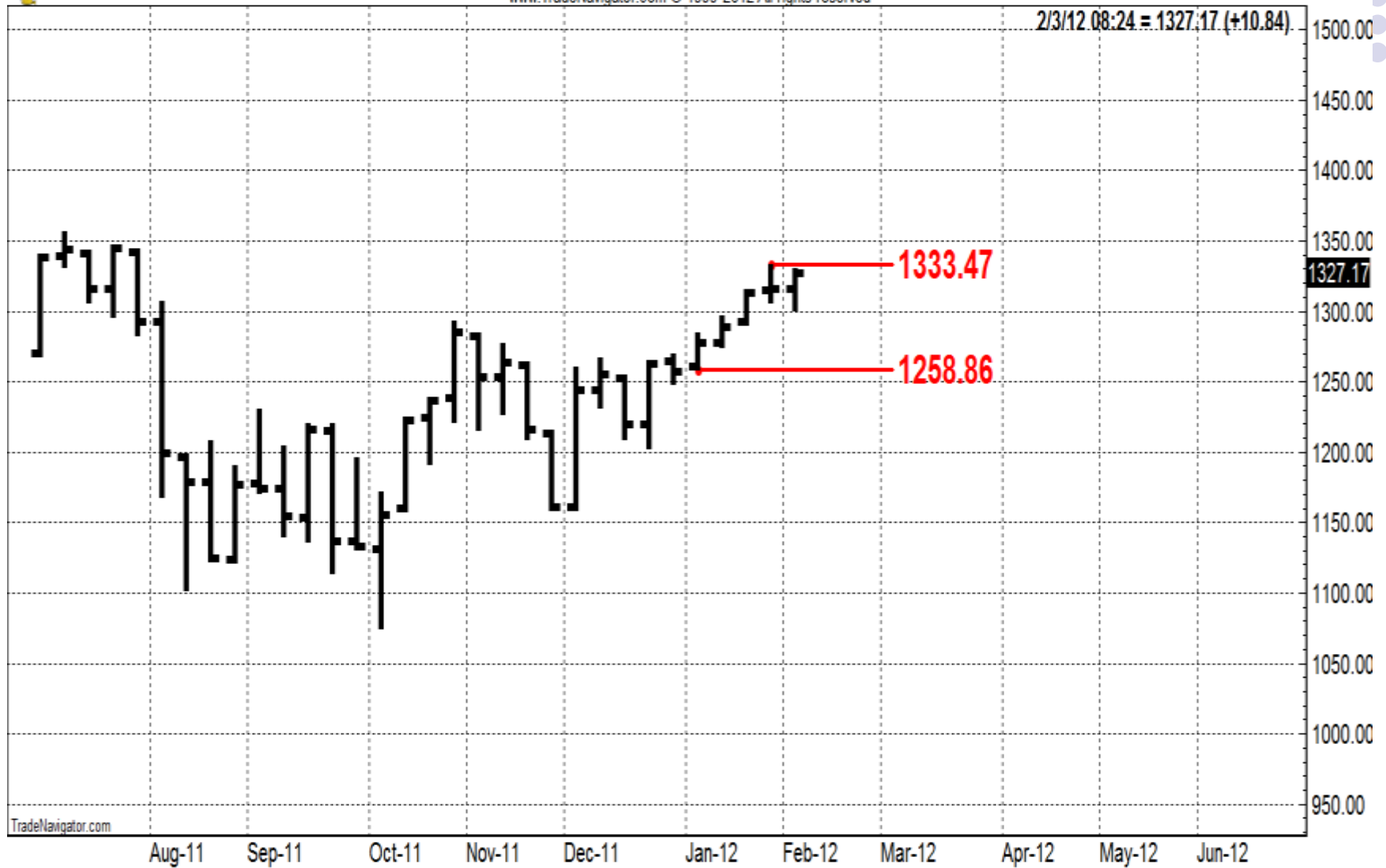
www.TradeNavigator.com © 1999-2012 All rights reserved



In S&P



\$SPX: S&p 500 Index (Weekly bars)
www.TradeNavigator.com © 1999-2012 All rights reserved



My CMC trade this week



- Review of CMC logic
- One day CMC
- Introducing 2 day CMC
- Why 2 day?
- It's definitive
- The odds
- Recent and current examples
- Follow through – trade location is the one major advantage of a CMC

ADM CMC trade and status



ADM: Archer-Daniels-Midland Company (Daily bars)

www.TradeNavigator.com © 1999-2012 All rights reserved



Developing CMC



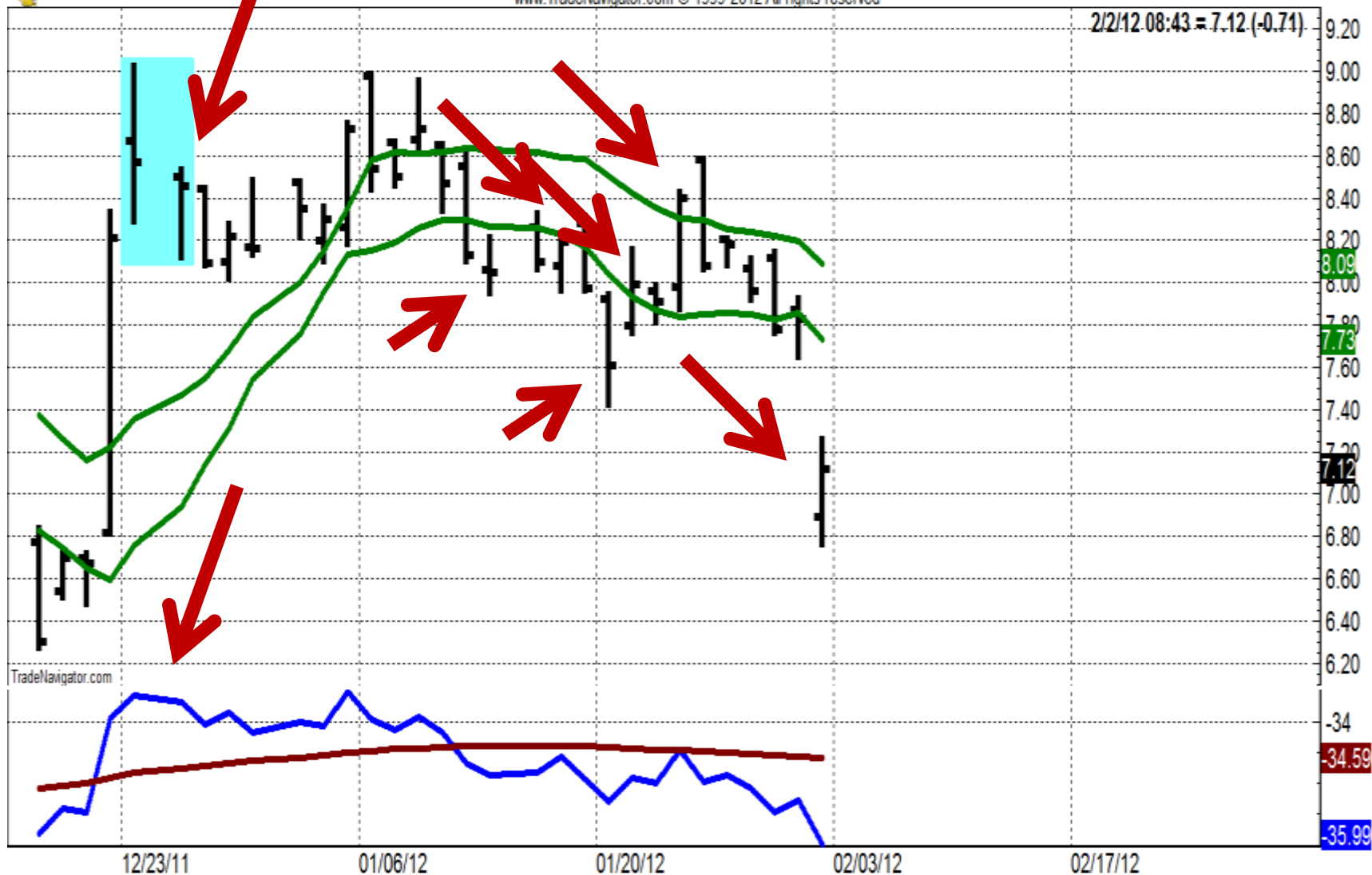
NG: Novagold Resources Inc New (Daily bars)
www.TradeNavigator.com © 1999-2012 All rights reserved



SD trade by trade



SD: Sandridge Energy Inc. (Daily bars)
www.TradeNavigator.com © 1999-2012 All rights reserved



ZM CMC and swing



CMC sell and follow through



HE-201204: Lean Hogs (Elec) Apr 2012 (Daily bars)

www.TradeNavigator.com © 1999-2012 All rights reserved



Introducing the 2day CMC



- Why?
- Advantages
- Disadvantages
- Slightly different procedure
- What you can gain
- What you can lose
- When it works best – sustained trends
- Examples

ANF



ANF: Abercrombie & Fitch Company (Daily bars)

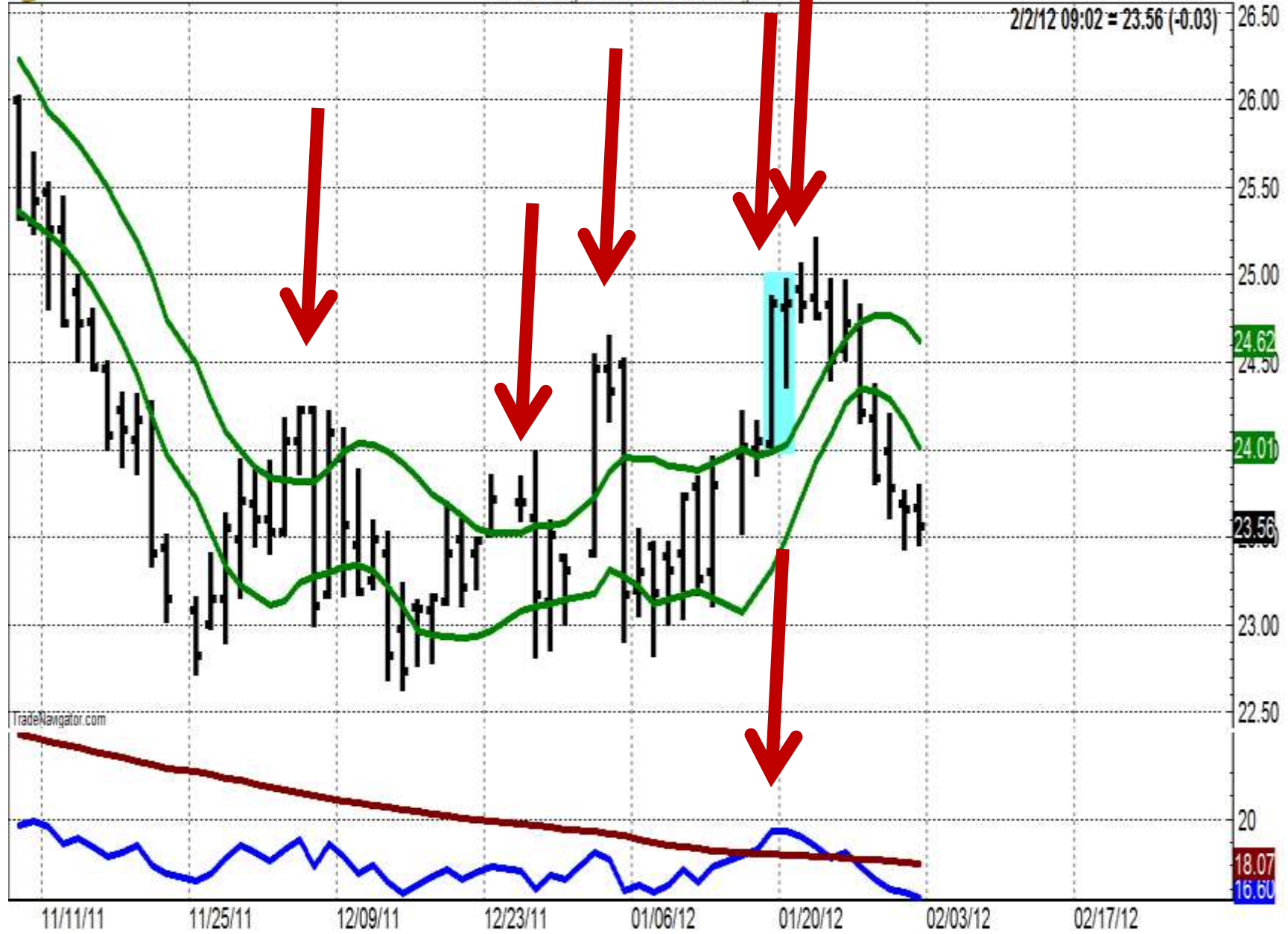
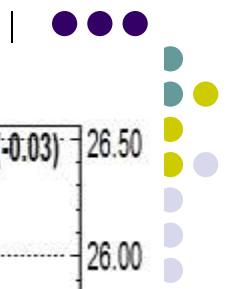
www.TradeNavigator.com © 1999-2012 All rights reserved





SB2-201203: Sugar #11 (Comb) Mar 2012 (Daily bars)

www.TradeNavigator.com © 1999-2012 All rights reserved



2/2/12 09:02 = 23.56 (-0.03)

26.50
26.00
25.50
25.00
24.62
24.50
24.01
23.56
23.00
22.50
20
18.07
16.60

TradeNavigator.com

11/11/11 11/25/11 12/09/11 12/23/11 01/06/12 01/20/12 02/03/12 02/17/12



SB2-201203: Sugar #11 (Comb) Mar 2012 (Daily bars)

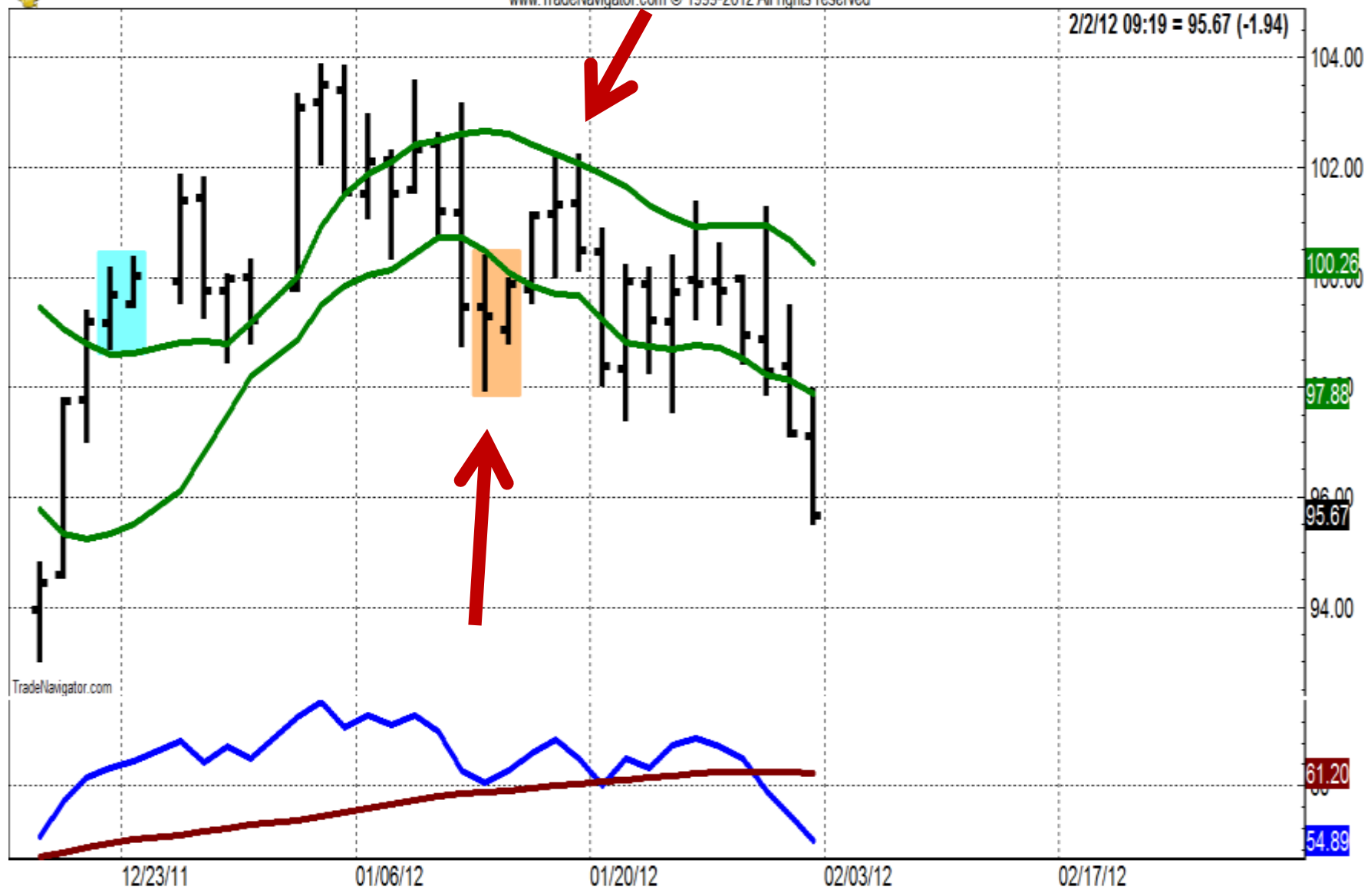
www.TradeNavigator.com © 1999-2012 All rights reserved





CL2-201203: Crude Oil NY (Comb) Mar 2012 (Daily bars)

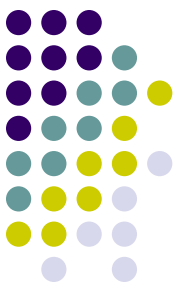
www.TradeNavigator.com © 1999-2012 All rights reserved





Myth of the Golden Cross

- What is it?
- 200MA and 50 MA
- $50MA > 200MA$ buy
- $50MA < 200MA$ sell
- Track records
- Various variations on the theme



Run Orders Notes Print Save Save As Renam

Rules

Inputs

Data

Settings

All Rules Long Entries Long Exits Short Entries S

Use	Alt	Signal Name	Action
<input checked="" type="checkbox"/>	<input type="checkbox"/>	Sell when Moving Avg Crosses Below Another	Short Entry
<input checked="" type="checkbox"/>	<input type="checkbox"/>	Exit Short: Stop Loss	Short Exit
<input checked="" type="checkbox"/>	<input type="checkbox"/>	Exit Long: Stop Loss	Long Exit
<input checked="" type="checkbox"/>	<input type="checkbox"/>	Buy when Moving Avg Crosses Above Another	Long Entry

DJIA from 1950 to now



Summary - All Trades

Overall

Total Net Profit:	\$3,094	Profit Factor (\$Wins/\$Losses):	1.53
Total Trades:	34	Winning Percentage:	29.4%
Average Trade:	\$91	Payout Ratio (AvgWin/AvgLoss):	3.66
Max Closed-out Drawdown:	-\$3,688	CPC Index (PF x Win% x PR):	1.64
Max Intraday Drawdown:	-\$3,688	Expectancy (AvgTrade/AvgLoss):	37.17%
Account Size Required:	\$3,688	Return Pct:	83.9%
Open Equity:	-\$2,492	Kelly Pct (AvgTrade/AvgWin):	10.14%
Percent in the Market:	84.8%	Optimal f:	0.02
Avg # of Bars in Trade:	396.00	Z-Score (W/L Predictability):	1.0
Avg # of Trades per Year:	0.6	Current Streak:	10 Losses

Monthly Profit Analysis

Average Monthly Profit:	\$5	Monthly Sharpe Ratio:	-0.03
Std Dev of Monthly Profits:	\$230	Annualized Sharpe Ratio:	-0.10
		Calmar Ratio:	0.02

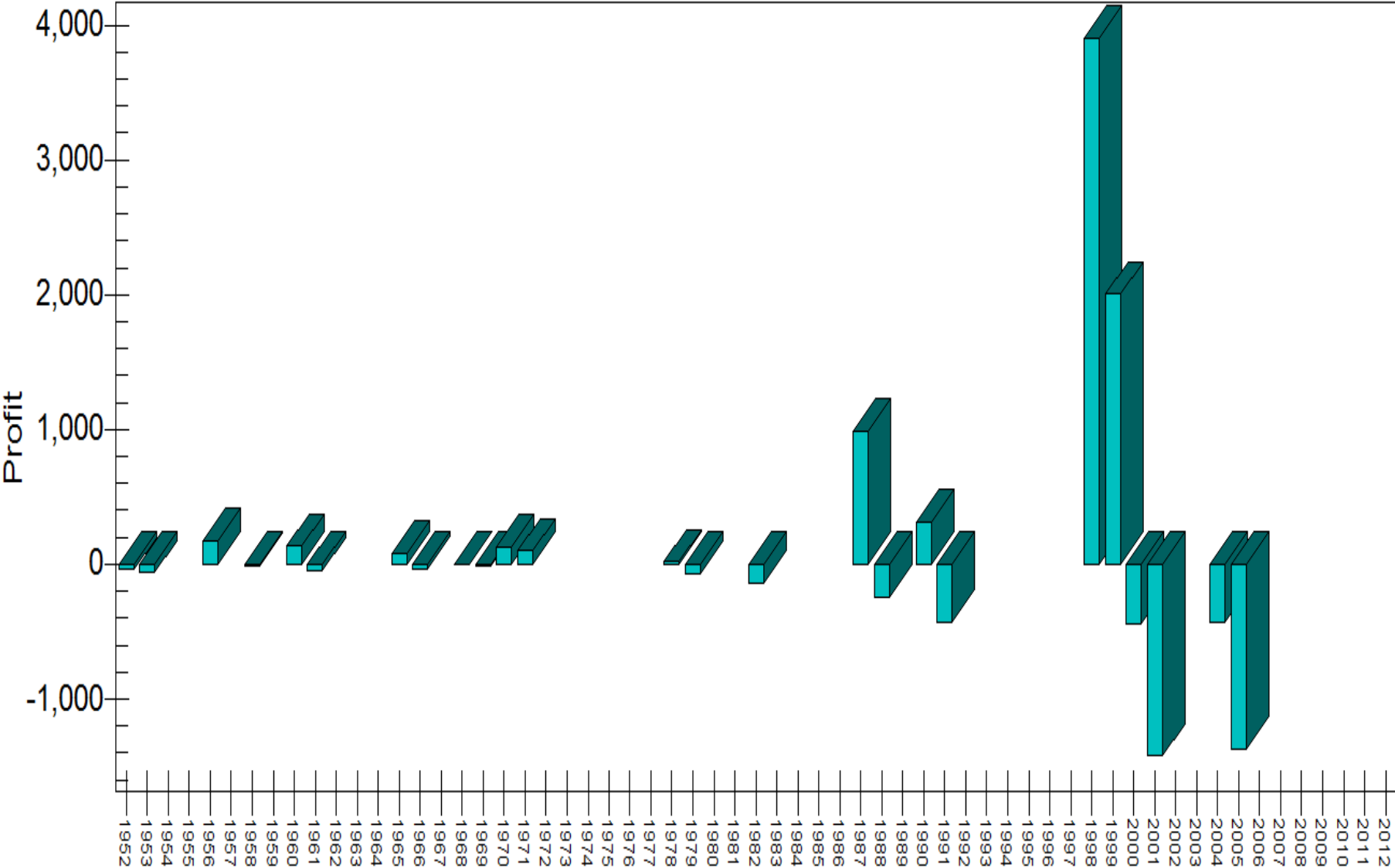
Winning Trades

Total Winners:	10
Gross Profit:	\$8,970
Average Win:	\$897
Largest Win:	\$4,929
Largest Drawdown in Win:	-\$202
Avg Drawdown in Win:	-\$94
Avg Run Up in Win:	\$1,297
Avg Run Down in Win:	-\$94
Most Consec Wins:	3
Avg # of Consec Wins:	1.25
Avg # of Bars in Wins:	863.30

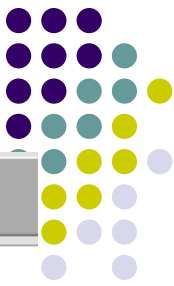
Losing Trades

Total Losers:	24
Gross Loss:	-\$5,876
Average Loss:	-\$245
Largest Loss:	-\$1,027
Largest Peak in Loss:	\$2,881
Avg Peak in Loss:	\$261
Avg Run Up in Loss:	\$261
Avg Run Down in Loss:	-\$393
Most Consec Losses:	10
Avg # of Consec Losses:	2.67
Avg # of Bars in Losses:	201.29

By Year by Profit



ES from start no stop



Summary - All Trades

Total Net Profit:	\$34,340	Profit Factor (\$Wins/\$Losses):	1.41
Total Trades:	98	Winning Percentage:	34.7%
Average Trade:	\$350	Payout Ratio (AvgWin/AvgLoss):	2.65
Max Closed-out Drawdown:	-\$9,925	CPC Index (PF x Win% x PR):	1.29
Max Intraday Drawdown:	-\$10,395	Expectancy (Avg Trade/AvgLoss):	26.56%
Account Size Required:	\$16,645	Return Pct:	206.3%
Open Equity:	\$2,243	Kelly Pct (Avg Trade/AvgWin):	10.03%
Percent in the Market:	69.1%	Optimal f:	0.07
Avg # of Bars in Trade:	25.88	Z-Score (W/L Predictability):	1.4
Avg # of Trades per Year:	6.9	Current Streak:	2 Losses

Monthly Profit Analysis

Average Monthly Profit:	\$200	Monthly Sharpe Ratio:	0.07
Std Dev of Monthly Profits:	\$2,309	Annualized Sharpe Ratio:	0.24
		Calmar Ratio:	0.23

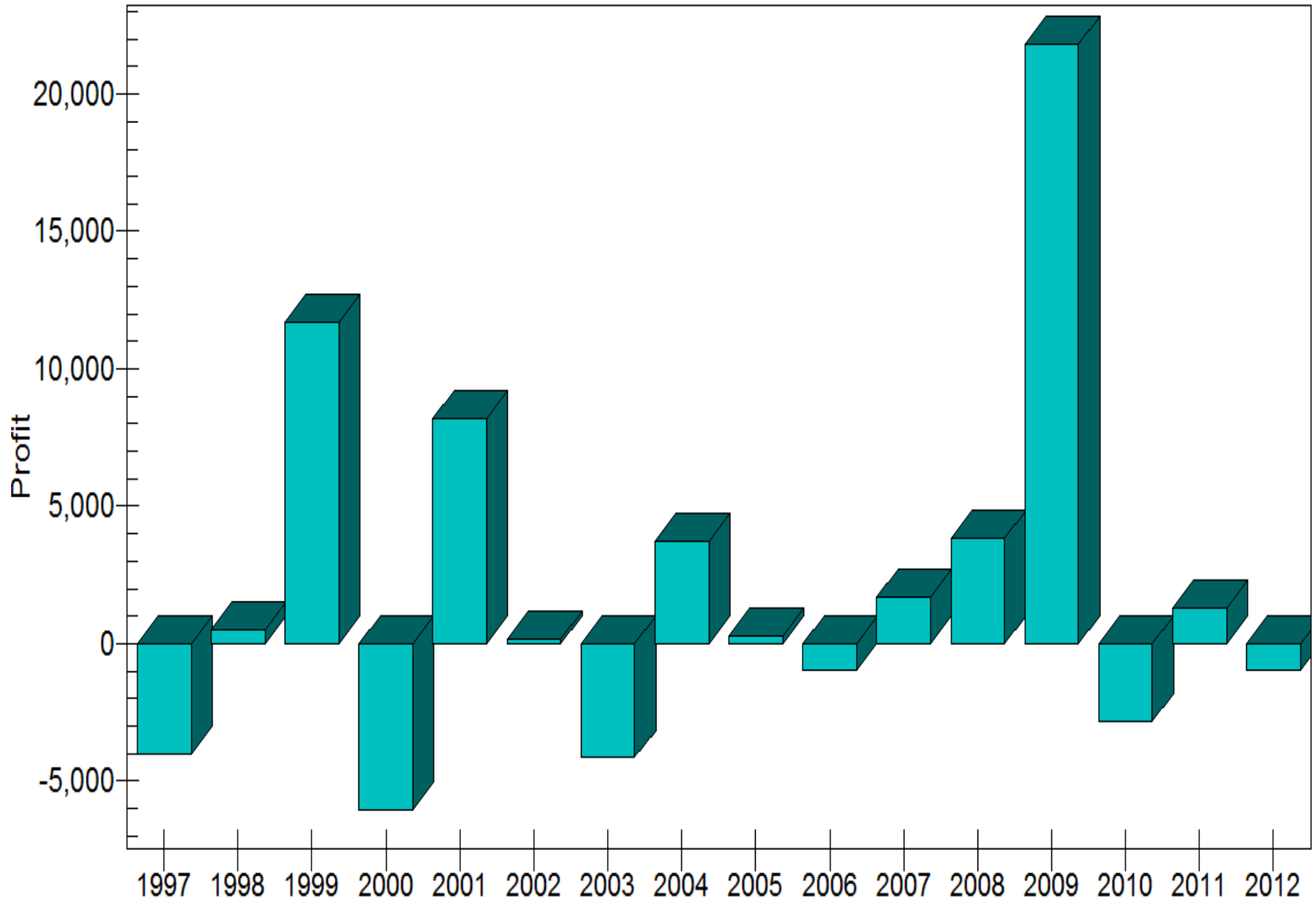
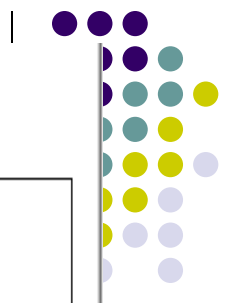
Winning Trades

Total Winners:	34
Gross Profit:	\$118,770
Average Win:	\$3,493
Largest Win:	\$20,130
Largest Drawdown in Win:	-\$1,445
Avg Drawdown in Win:	-\$591
Avg Run Up in Win:	\$6,596
Avg Run Down in Win:	-\$591
Most Consec Wins:	6
Avg # of Consec Wins:	1.36
Avg # of Bars in Wins:	49.35

Losing Trades

Total Losers:	64
Gross Loss:	-\$84,430
Average Loss:	-\$1,319
Largest Loss:	-\$1,545
Largest Peak in Loss:	\$6,718
Avg Peak in Loss:	\$1,275
Avg Run Up in Loss:	\$1,275
Avg Run Down in Loss:	-\$1,386
Most Consec Losses:	5
Avg # of Consec Losses:	2.46
Avg # of Bars in Losses:	13.41

By Year by Profit



SP from start with \$10,000 stop



Summary - All Trades

Overall

Total Net Profit:	\$146,470	Profit Factor (\$Wins/\$Losses):	3.29
Total Trades:	9	Winning Percentage:	22.2%
Average Trade:	\$16,274	Payout Ratio (AvgWin/AvgLoss):	11.52
Max Closed-out Drawdown:	-\$50,225	CPC Index (PF x Win% x PR):	8.42
Max Intraday Drawdown:	-\$50,225	Expectancy (Avg Trade/AvgLoss):	178.17%
Account Size Required:	\$81,475	Return Pct:	179.8%
Open Equity:	\$480	Kelly Pct (Avg Trade/AvgWin):	15.47%
Percent in the Market:	66.0%	Optimal f:	0.12
Avg # of Bars in Trade:	550.78	Z-Score (W/L Predictability):	0.4
Avg # of Trades per Year:	0.3	Current Streak:	5 Losses

Monthly Profit Analysis

Average Monthly Profit:	\$492	Monthly Sharpe Ratio:	0.02
Std Dev of Monthly Profits:	\$11,292	Annualized Sharpe Ratio:	0.09
		Calmar Ratio:	0.12

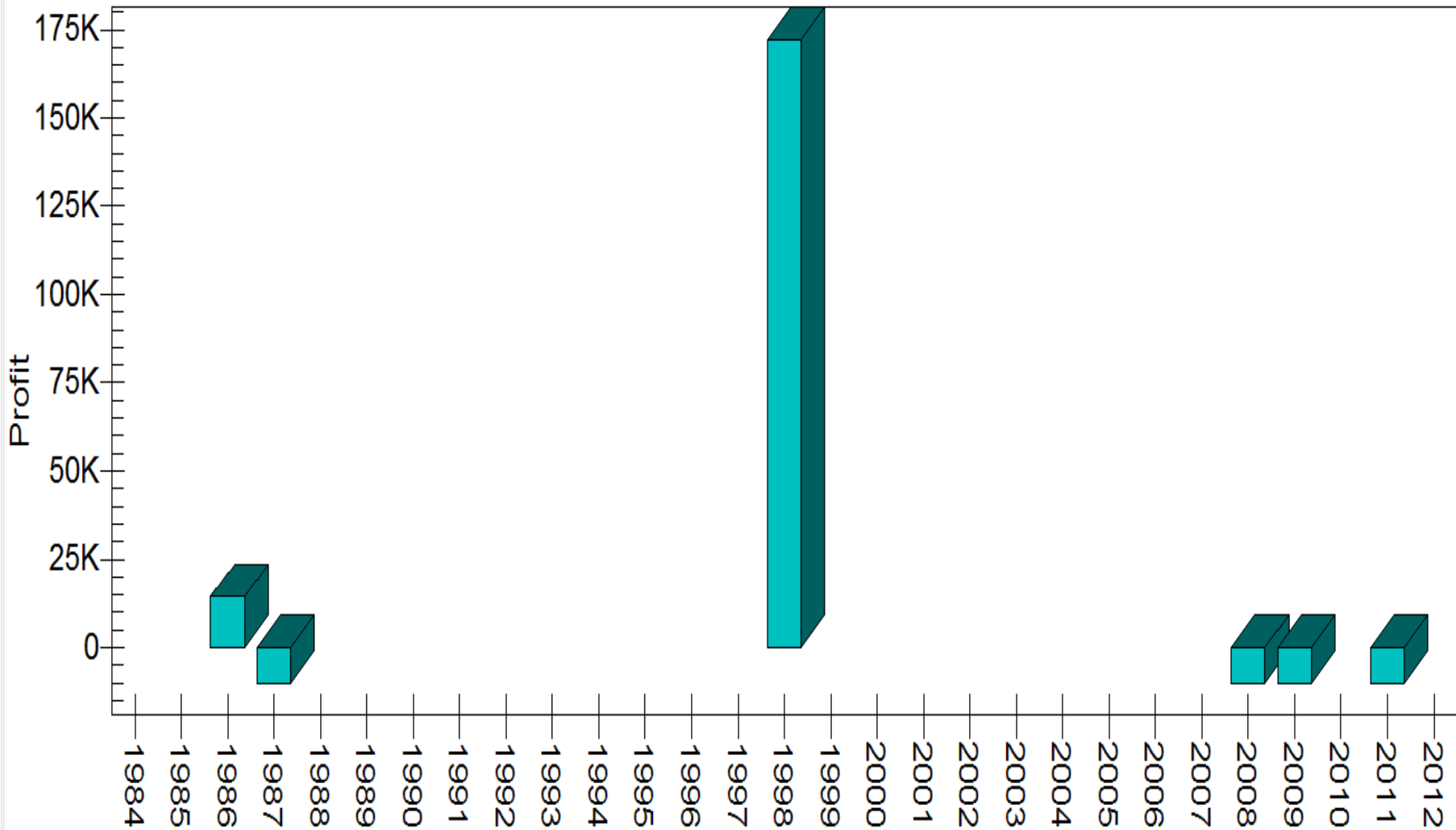
Winning Trades

Total Winners:	2
Gross Profit:	\$210,410
Average Win:	\$105,205
Largest Win:	\$192,355
Largest Drawdown in Win:	-\$4,783
Avg Drawdown in Win:	-\$3,195
Avg Run Up in Win:	\$126,380
Avg Run Down in Win:	-\$3,195
Most Consec Wins:	1
Avg # of Consec Wins:	1.00
Avg # of Bars in Wins:	1,571.00

Losing Trades

Total Losers:	7
Gross Loss:	-\$63,940
Average Loss:	-\$9,134
Largest Loss:	-\$10,045
Largest Peak in Loss:	\$159,455
Avg Peak in Loss:	\$37,293
Avg Run Up in Loss:	\$37,293
Avg Run Down in Loss:	-\$9,134
Most Consec Losses:	5
Avg # of Consec Losses:	3.50
Avg # of Bars in Losses:	259.29

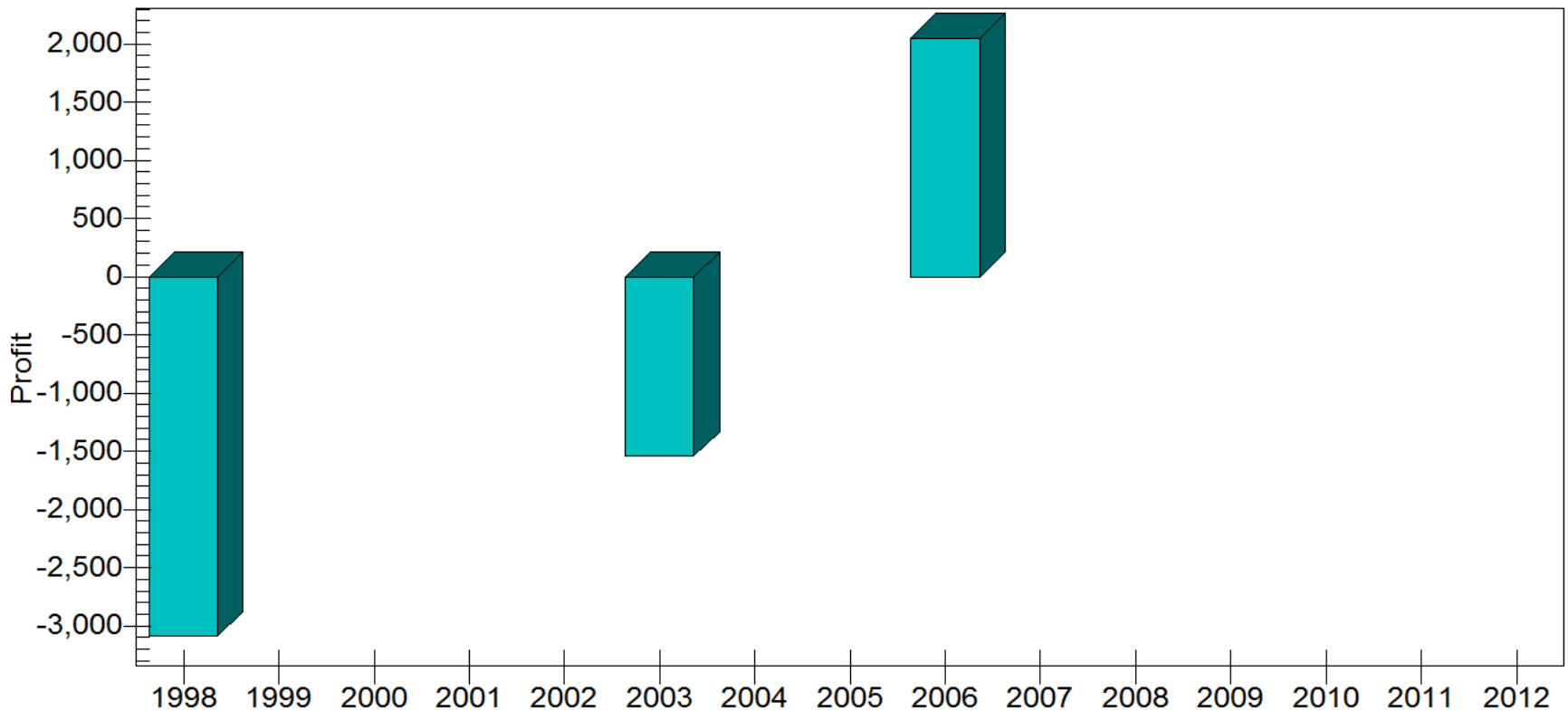
By Year by Profit



ES from start \$2500 stop



By Year
by Profit



3x3 channel Review



- 3 high 3 low simple MA channel
- CHART next slide
- What else do we need?
- Confirmation
- Entry/exit
- Danger zone exit
- Stop and TS
- Examples



G6E-201203: Euro FX (Elec) Mar 2012 (Daily bars)

www.TradeNavigator.com © 1999-2012 All rights reserved

1/26/12 11:24 = 1.3102 (+0.0015)





ES1-201203: E-Mini S&P 500 (Day) Mar 2012 (Daily bars)

www.TradeNavigator.com © 1999-2012 All rights reserved



How to deal with this?



ZB-201203: T-Bonds 30Yr CBT Elec Mar 2012 (Daily bars)

www.TradeNavigator.com © 1999-2012 All rights reserved





ZB-201203: T-Bonds 30Yr CBT Elec Mar 2012 (360 minute bars)

www.TradeNavigator.com © 1999-2012 All rights reserved



1/26/12 11:38 = 142^25 (+1^00)



Confirmation MOM/MA 28/28



ES1-201203: E-Mini S&P 500 (Day) Mar 2012 (Daily bars)

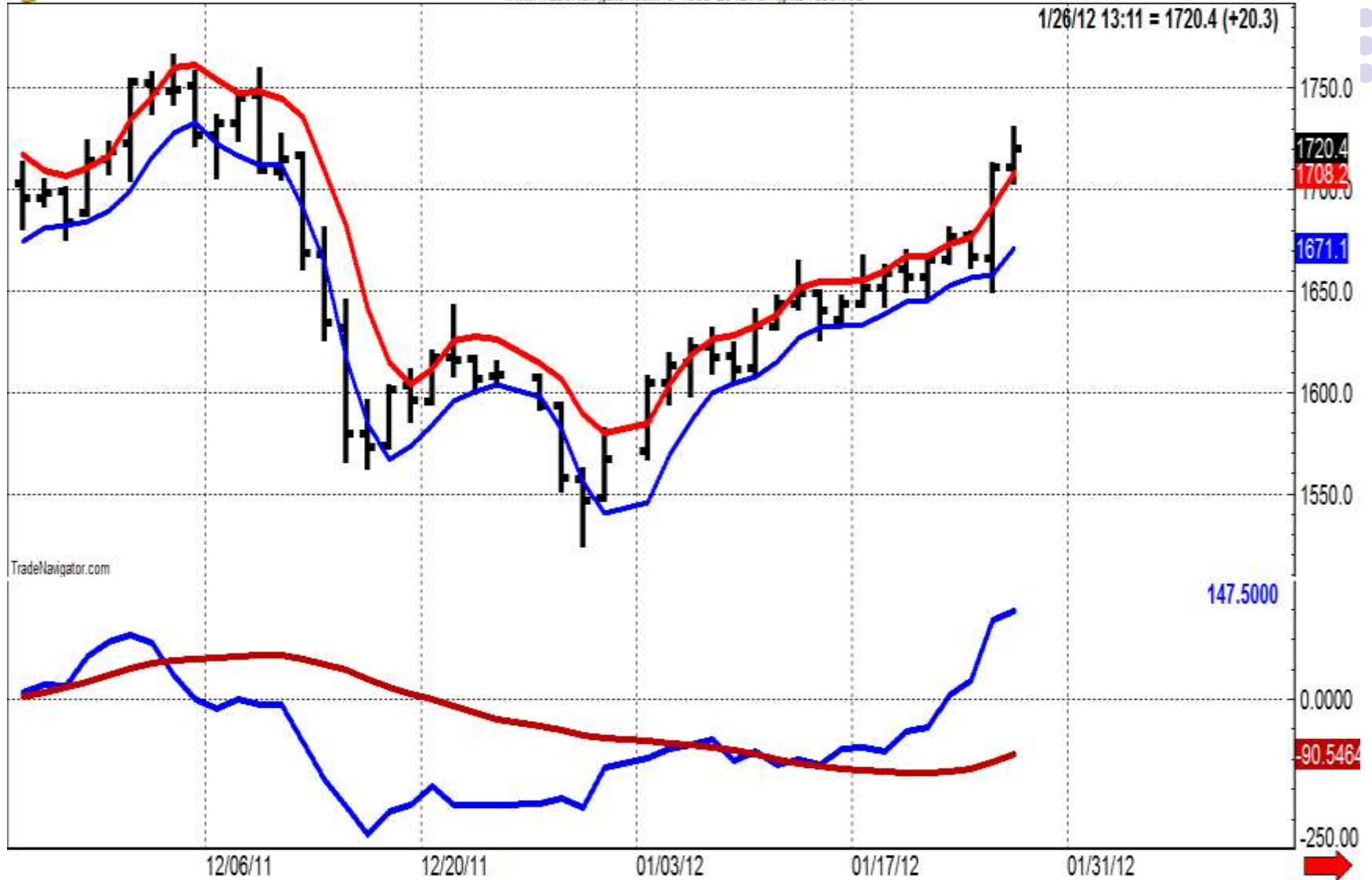
www.TradeNavigator.com © 1999-2012 All rights reserved





GC2-201202: Gold Comex (Comb) Feb 2012 (Daily bars)

www.TradeNavigator.com © 1999-2012 All rights reserved

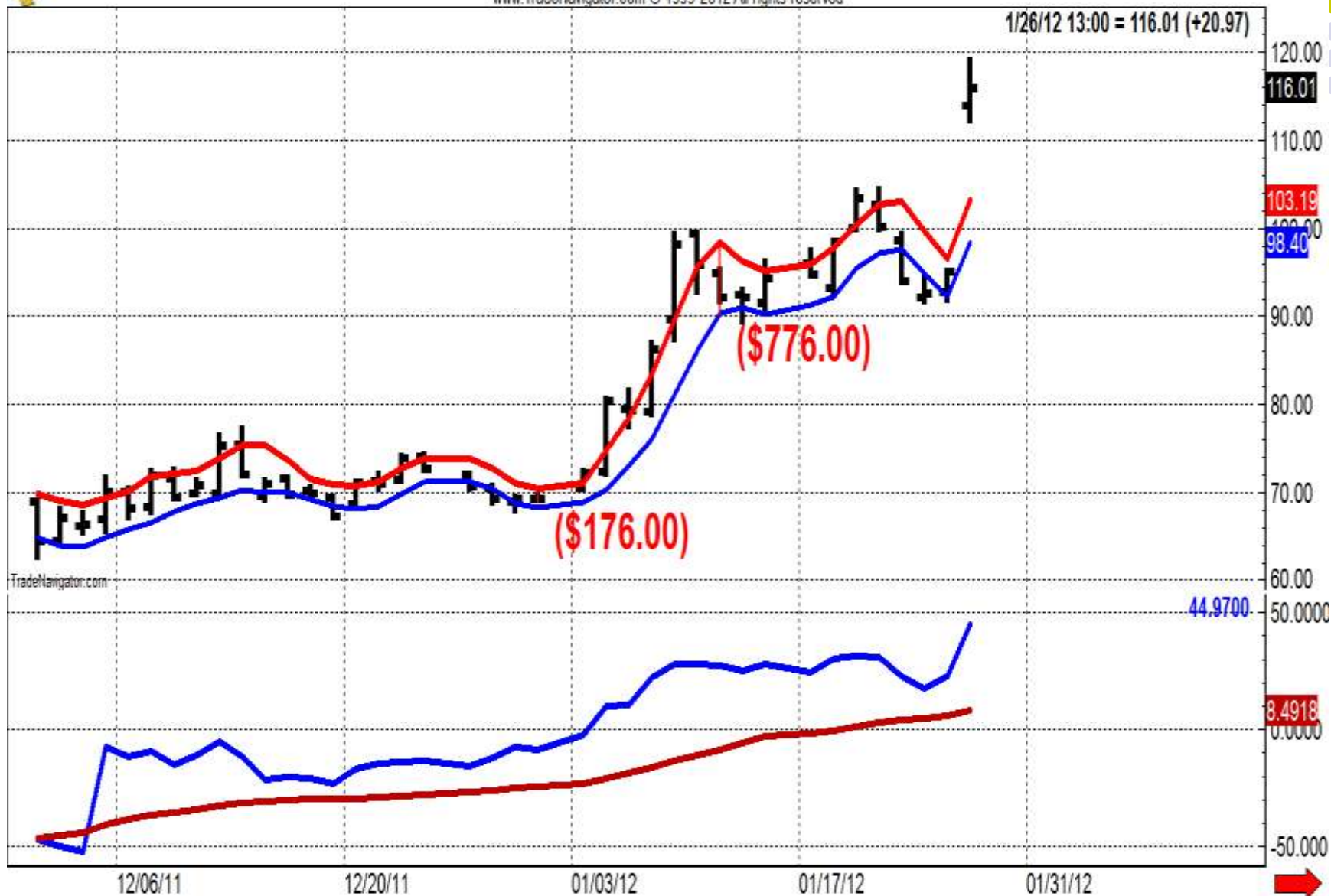


TradeNavigator.com



NFLX: Netflix, Inc. (Daily bars)

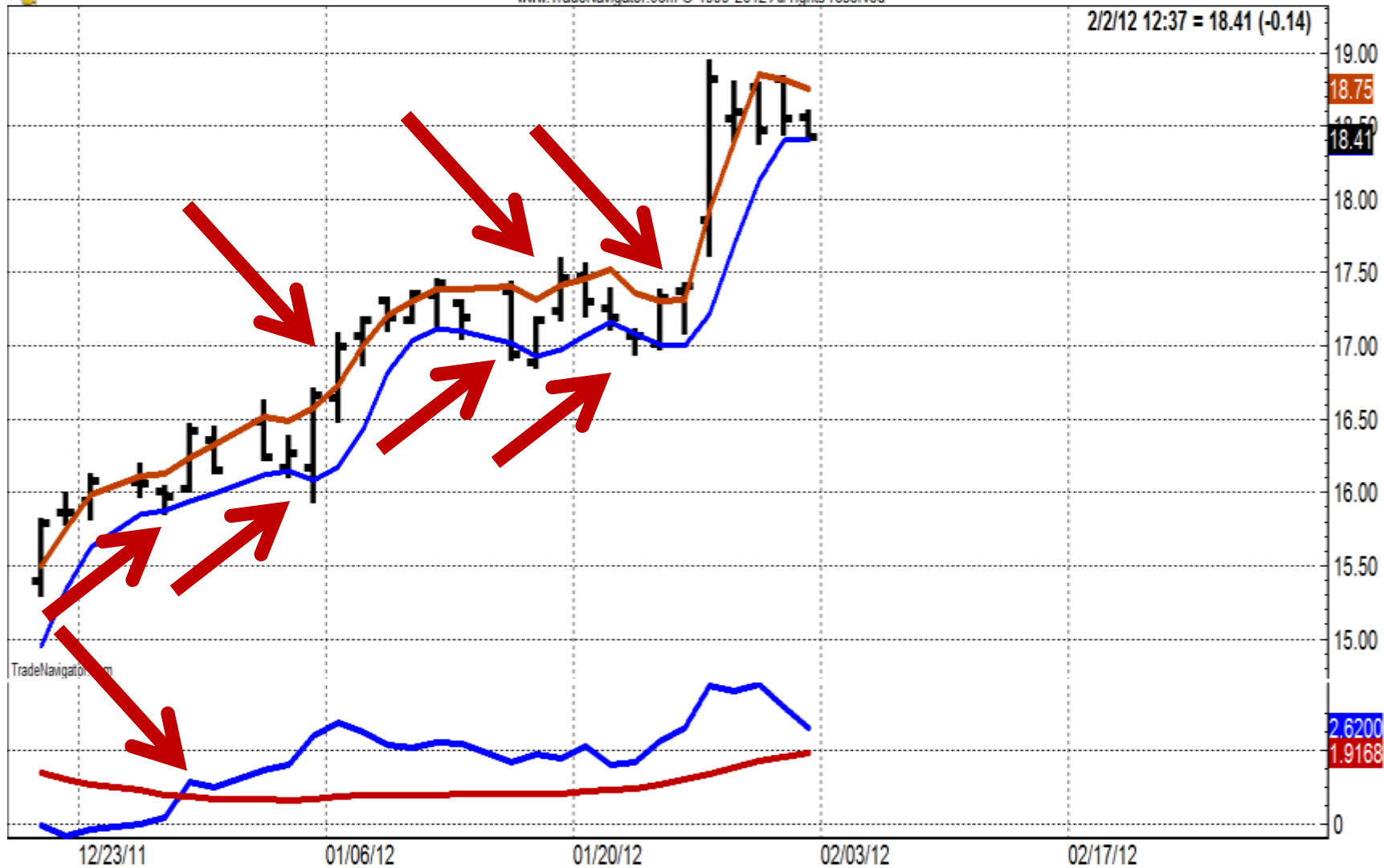
www.TradeNavigator.com © 1999-2012 All rights reserved



Current/recent 3x3 trades



NWL: Newell Rubbermaid Inc. (Daily bars)
www.TradeNavigator.com © 1999-2012 All rights reserved



What did I do today?



NG: Novagold Resources Inc New (Daily bars)

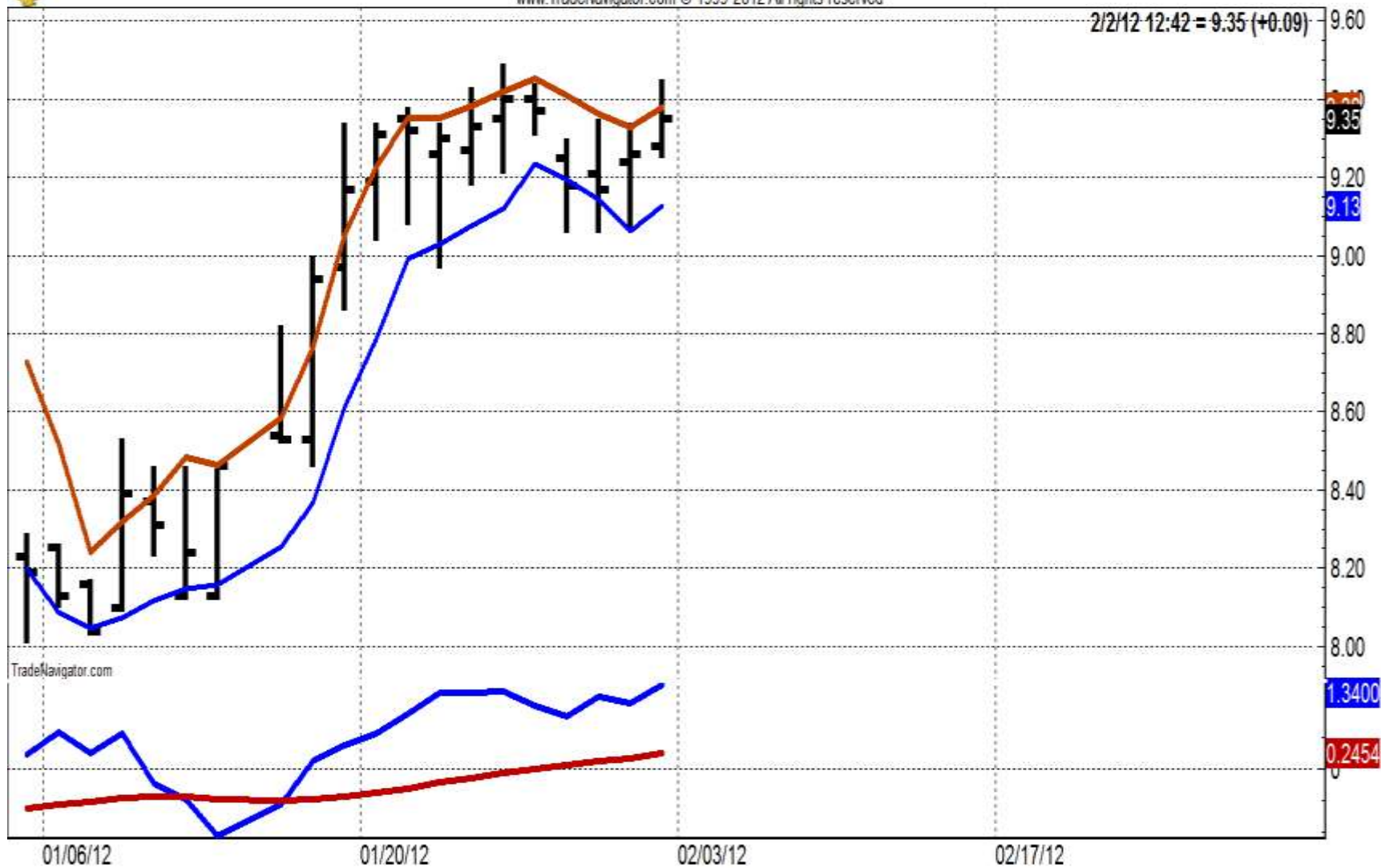
www.TradeNavigator.com © 1999-2012 All rights reserved



What did I do today?



AGRO: Adecoagro S.A. (Daily bars)
www.TradeNavigator.com © 1999-2012 All rights reserved

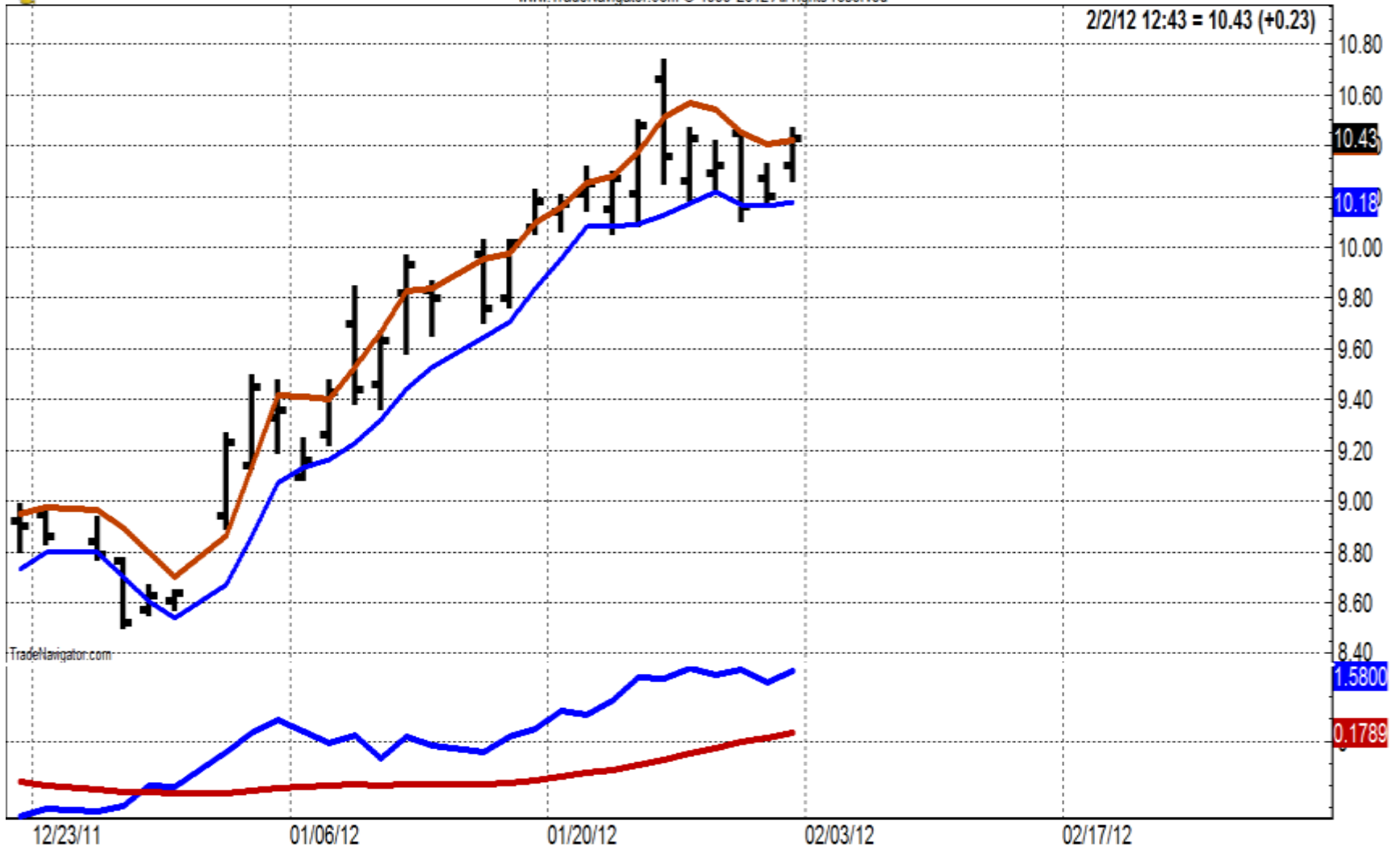


What did I do today?



AA: Alcoa Inc. (Daily bars)

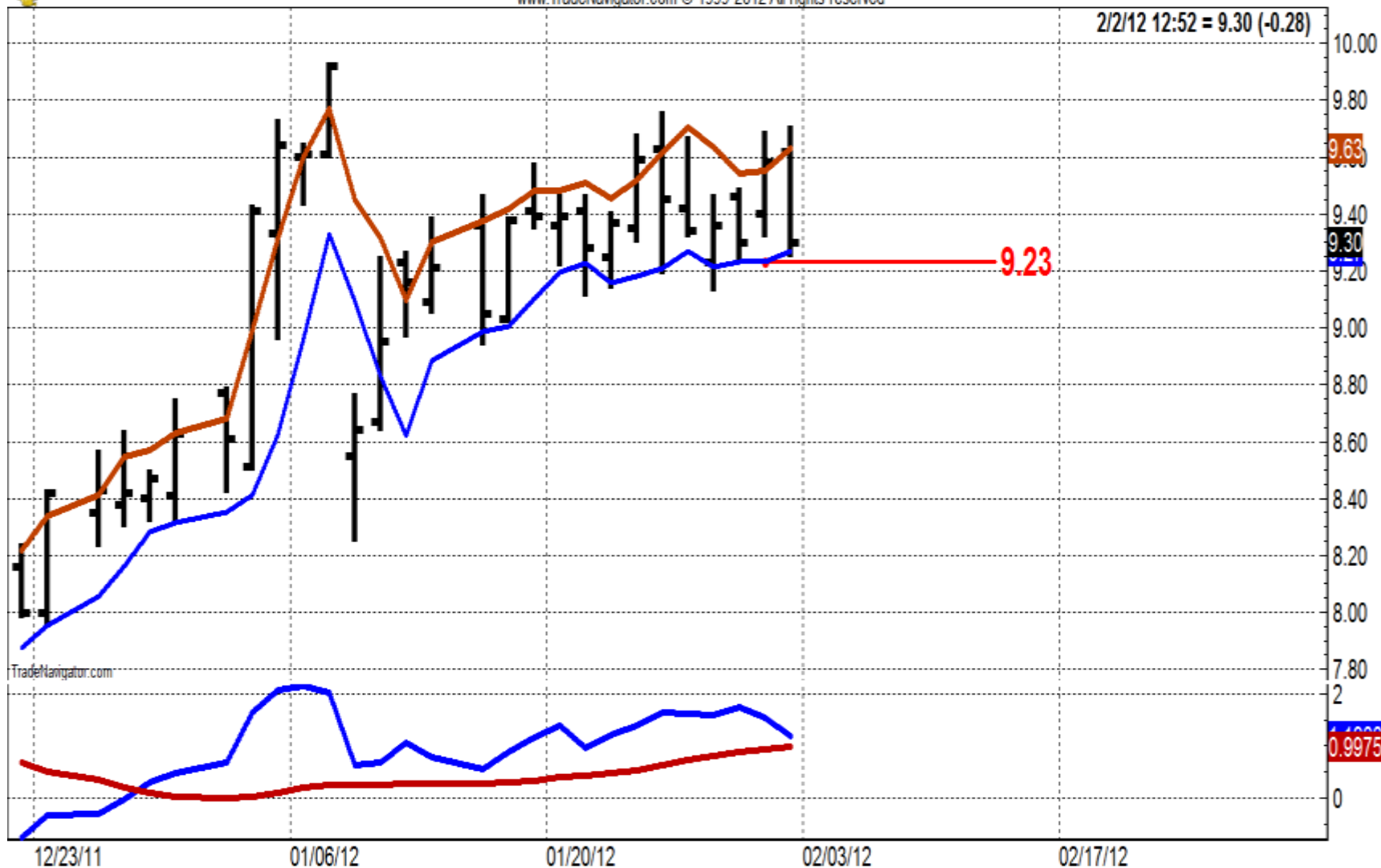
www.TradeNavigator.com © 1999-2012 All rights reserved



What did I do today?



LIZ: Liz Claiborne, Inc. (Daily bars)
www.TradeNavigator.com © 1999-2012 All rights reserved



LIZ CLAIRBORNE INC COM LIZ: NYSE

Consumer Cyclical : Apparel/Accessories



- Snapshot
- Charts
- News
- Options Chains
- Analyst Research
- Fundamentals
- Earnings
- Insider Activity

Last Price	Today's Change	Bid (Size)	Ask (Size)	Day's Range	Volume	Trade
9.30	-0.280 (-2.92%)	9.30 x3,900	9.31 x2,900	9.285 - 9.71	1,841,156	BUY SELL

NYSE Delayed Quote Last Trade as of 3:31 PM ET 2/2/12 [Get free real-time quotes](#)

Open	9.62	Market Cap	879.7 M
Previous Close	9.58	Shares Outstanding	94.6 M
52 - Week Range	4.02 - 9.93 <small>8/19/11 - 1/9/12</small>	Beta	2.4
Avg Volume (10 days)	1,895,083	Dividend Yield	--
P/E (Trailing 12 mo.)	--	Dividend ?	--
EPS (Trailing 12 mo.) ?	-1.23	Ex-Dividend Date	--
Next Earnings Date	2/29/12	Dividend Payable Date	--

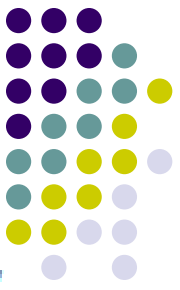


Alert me when

The Path of Least Seasonal Resistance

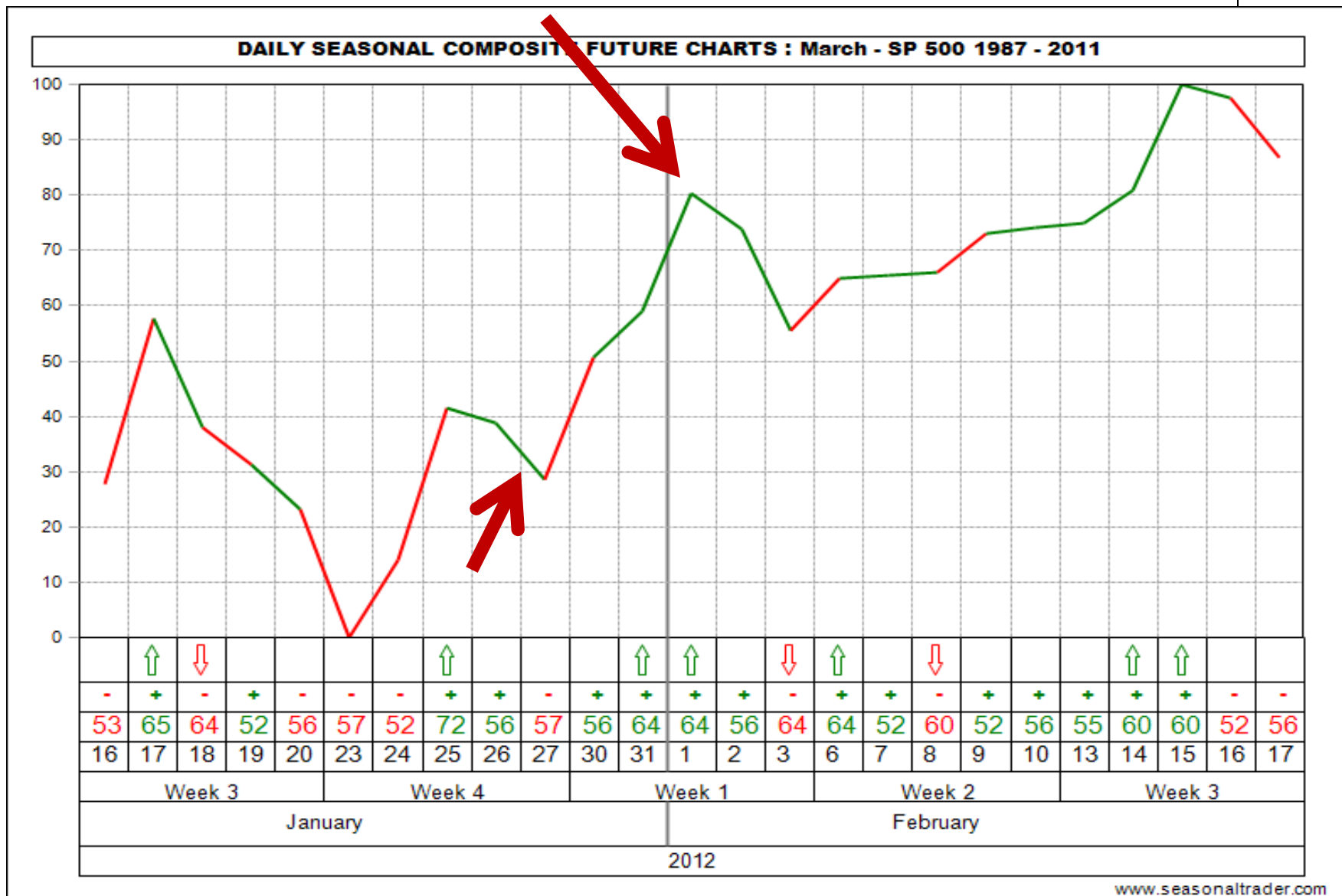


- What do seasonals tell us?
- From point A to point B
- What happens between A and B?
- Can we take advantage of this?
- If so then HOW?
- Example: recent S&P seasonal
- Buy 1/26 exit 2/1
- Details



Name	Month	L/S	Entry Date	Exit Date	Stop %	PL Ratio	% Wins	Avg Profit	Avg Loss	% Avg Profit	% Avg Loss	Max Wins	Max Loss	Daily PF	View History
European Currency	Mar	S	1/4	1/15	3.000	8.1	86.1	0.019	-0.015	1.69	1.30	11	1	0.0017	History
Live Cattle	Feb	L	1/25	2/11	3.000	4.4	78.3	1.84	-1.51	3.12	2.32	10	3	0.1083	History
SP 500	Mar	L	1/26	2/1	3.500	5.4	79.3	11.45	-8.11	1.60	1.00	9	2	1.9076	History
SP 500	Mar	S	1/18	1/22	2.500	8.4	75.9	13.10	-4.89	1.69	1.03	7	2	3.2756	History
Swiss Franc	Mar	S	1/25	1/30	3.000	6.6	77.8	0.0085	-0.0045	1.25	0.66	8	2	0.0017	History

A closer look at the pattern

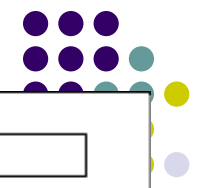




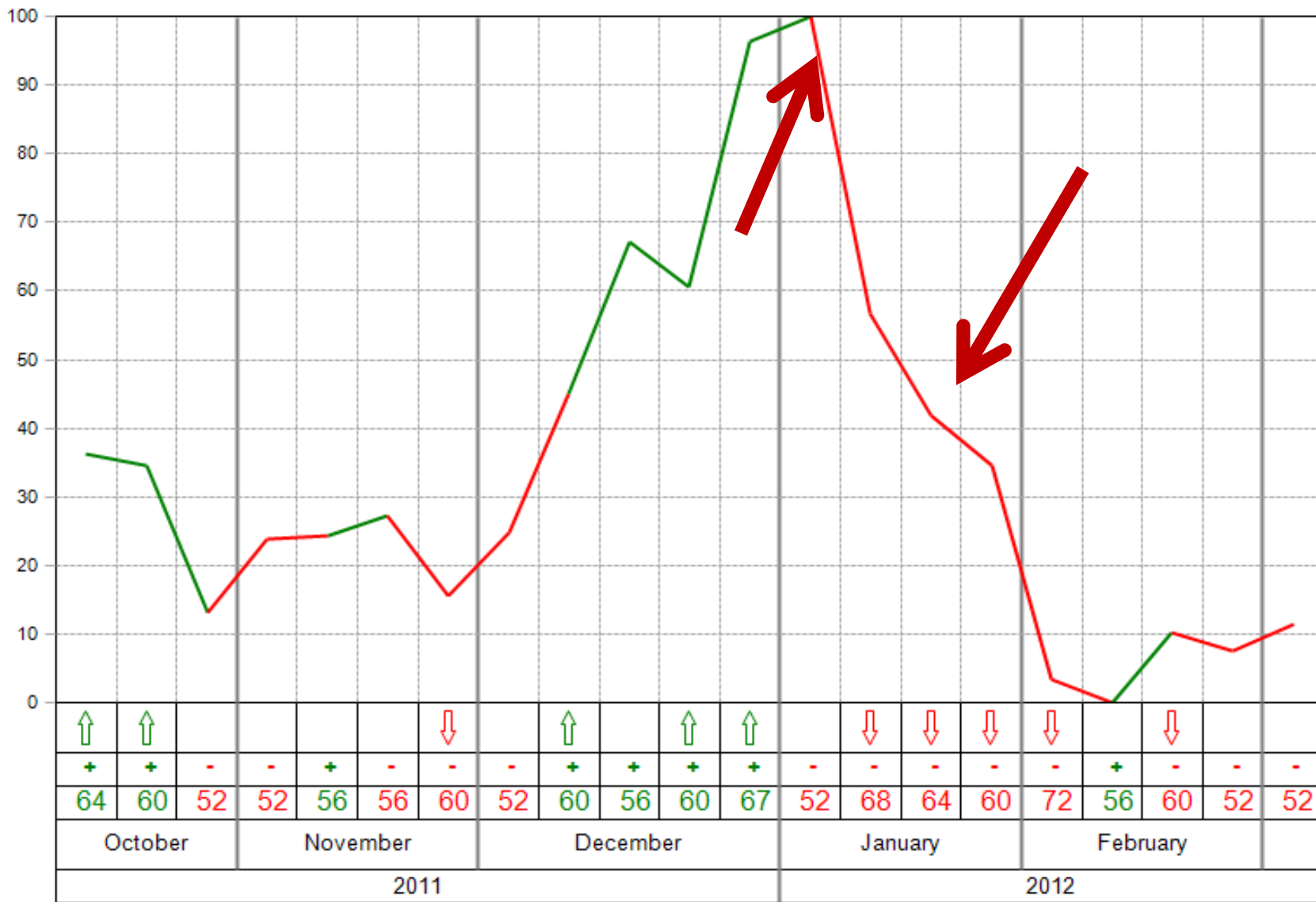
ES1-201203: E-Mini S&P 500 (Day) Mar 2012 (Daily bars)

www.TradeNavigator.com © 1999-2012 All rights reserved

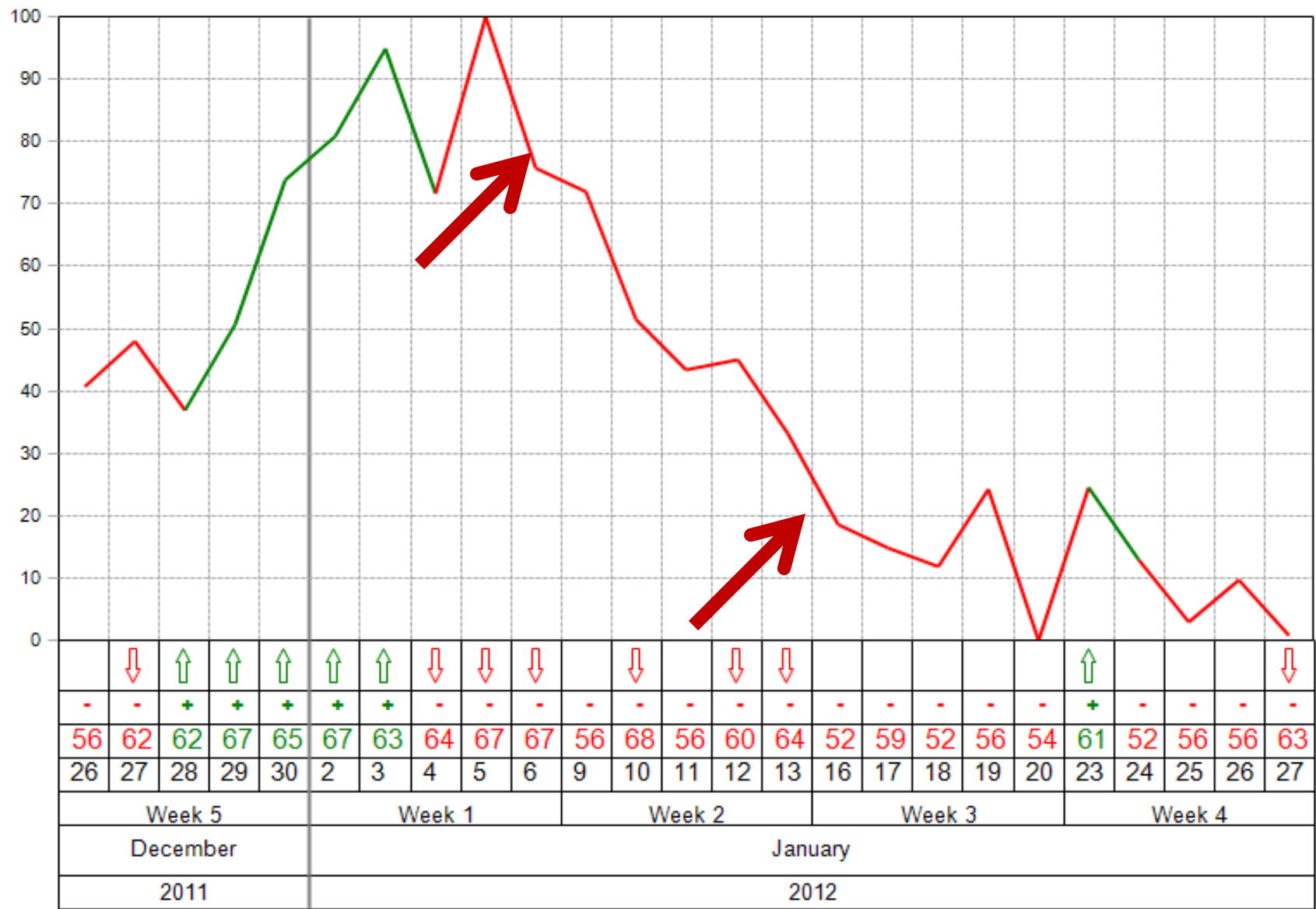




WEEKLY SEASONAL COMPOSITE FUTURE CHARTS : March - European Currency 1987 - 2011



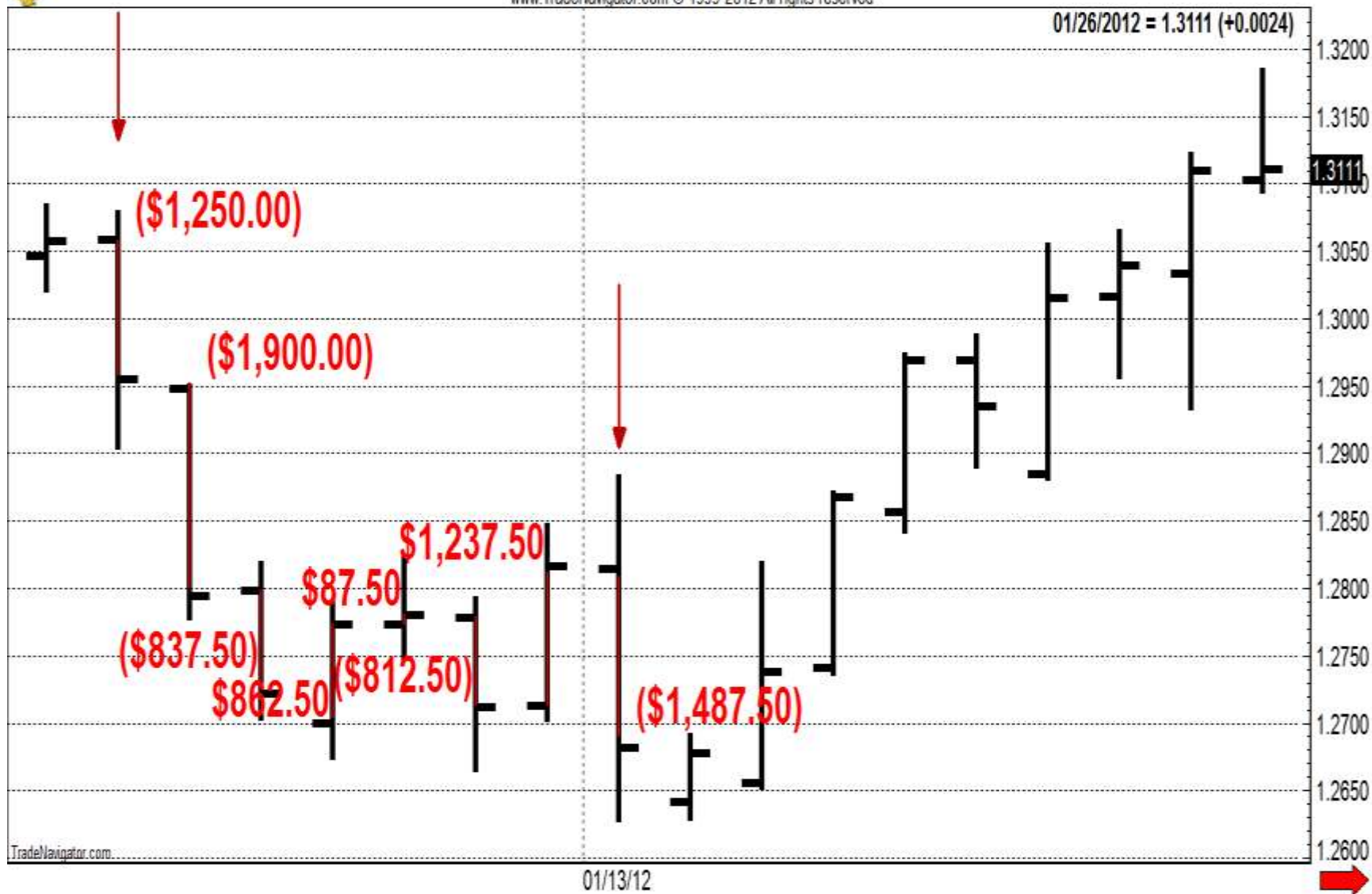
DAILY SEASONAL COMPOSITE FUTURE CHARTS : March - European Currency 1987 - 2011





G6E-201203: Euro FX (Elec) Mar 2012 (Daily bars)

www.TradeNavigator.com © 1999-2012 All rights reserved



Concluding

- Email me if you have questions: jake@trade-futures.com
- Best of trading
- **Jake Bernstein**



© 2012 by Jake Bernstein

www.trade-futures.com

800-678-5253 * 831-430-0600



- Mentoring appointment interview
- <http://www.comtrade1.com/letter/>
- ATS sessions are recorded

I can be reached at 800-678-5253 or 831-430-0600

- Email me if you have questions:
- jake@trade-futures.com
- Best of trading
- **Jake Bernstein**