

# Christmas Mini Hats & Mittens



Designed by  
Susie Bonell

# Christmas Mini Hats & Mittens

Designed by Susie Bonell

**Materials:** Cascade Yarn's Hollywood 87% Superwash Wool / 10% Acrylic / 3% Polyester 100 g 208 yds : 1 skein each 11 red, 08 white, and 01 green.  
Needles size #6 double pointed needles  
Yarn needle, markers, stitch holders  
Snowflake or star sequins , small bow for wreath mitten  
½" sparkly pom pom for stripped hat, sewing thread and needle.

**Size:** Mitten 3 ½" high; Hat 3" high

**Gauge:** 5 sts = 1"

**Abbreviations:**

|                         |                   |                   |             |
|-------------------------|-------------------|-------------------|-------------|
| K = knit                | P = purl          | sl = slip         | st = stitch |
| K2tog = knit 2 together | rnd = round       | sm = slip marker  |             |
| rep = repeat            | PM = place marker | WS = wrong side   |             |
| dec = decrease          | inc = increase    | RS = right side   |             |
| beg = beginning         | sts = stitches    | est = established |             |
| c/o = cast on           | pat = pattern     | bet = between     |             |

ssk = slip the next two stitches knitwise one at a time. Insert point of left needle into front of the two slipped stitches and knit them together through the back loop.

K1, P1 ribbing: Row 1: \*K1, P1\* rep around. Row 2: K on the K sts & P on the P sts as they face you.

St st = stockinette stitch: knit one row, purl one row

M1 = Make one: With the left hand needle, pick up the bar between the stitch last worked and the 1<sup>st</sup> on the left needle and knit into the back of it.

## MITTENS

C/O 28 sts . Join and work in rnds. Work in K1, P1 ribbing for 4 rows, inc to 29 sts on last row.  
Knit 2 rows.

### Shape Thumb:

Rnd 1: K14, pm, M1, K1, M1, pm, K to end of rnd. (3 sts bet markers) (31 sts)

Rnd 2: Knit.

Rnd 3: K to 1<sup>st</sup> marker, sm, M1, K to next marker, M1, sm, K to end of rnd.

Rep rnds 2 & 3 until there are 9 sts between markers.

K 1 row and place thumb sts on holder, joining behind thumb sts. (28 sts)

Knit until mitten measures 3 ½" from beg.

Shape Top: K2 tog around (14 sts). K2 tog around again (7 sts) Cut yarn and run through remaining sts and pull snugly and secure.

### Thumb:

Place sts back on needles and K 2 rnds.

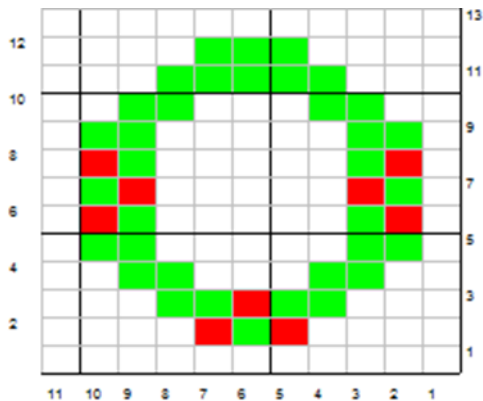
Next Rnd: (K2tog) 4 times, K1. (5 sts)

Cut yarn and run through remaining sts and pull up snugly and secure. Sew gap together at base of thumb.

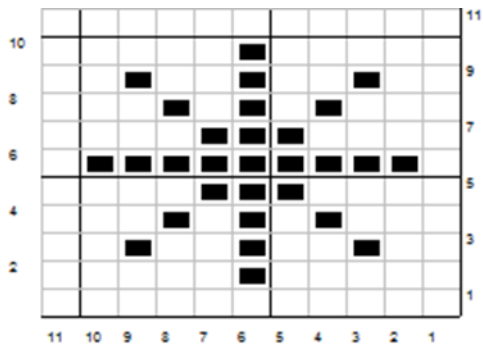
Weave in all ends.

Duplicate stitch snowflake or wreath chart, centering and starting about 5 rows down from the top of mitten.

Wreath Mitten: White mitten with green and red wreath. Place small bow at top of wreath.



Snowflake Mitten: Red mitten with white snowflake.



### HAT

#### Basic Hat

C/O 28 sts.

Work in K1, P1 ribbing for 6 rows.

Work in main color in st st (knit every row) for 15 rows.

Shape Top:

Rnd 1: \*K2, K2tog\* rep around. (21 sts)

Rnd 2: \*K1, K2tog\* rep around. (14 sts)

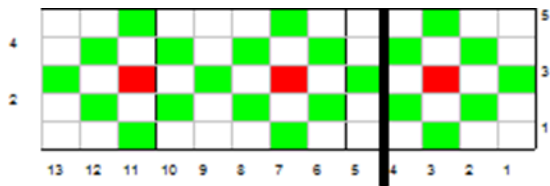
Rnd 3: K2tog around. (7 sts)

Cut yarn and run through remaining sts and pull snugly and secure.

Weave in all ends.

Turn up ribbing.

Diamonds Border Hat: White hat with red ribbing. Green and red border. Begin border 8 rows above ribbing.



Striped Hat: Green ribbing and background. Start strip sequence after ribbing as follows:

Row 1: Red

Row 2: Green.

Row 3: White.

Row 4: Green.

Repeat these 4 rows until hat measures 2  $\frac{3}{4}$ " then shape top in green.

Sew sparkly pom pom on top.

Star/Snowflake Hat:

White ribbing, green hat. Sew on stars or snowflakes randomly around hat.