

Federal Hillside



The Monthly Newsletter of the Federal Hill Neighborhood Association

January 2019

President's Letter

Dear Friends and Neighbors,

Happy New Year! As the holiday festivities wind down it's time to refocus on the important business of making Federal Hill the best neighborhood in Baltimore. Joining your local neighborhood association is a great way to keep abreast of the important issues impacting not only our community but also the city at large.

To that end I am pleased to announce that the 2019 FHNA Membership Drive is in full swing. We hope that every neighborhood resident will consider either renewing their existing membership or signing up for the first time. Curious about volunteer opportunities? Attend our meetings to learn how to make a difference through active involvement with the schools and non-profit organizations located in our neighborhood and beyond. There is literally something for everyone. Joining is so easy – just fill out the membership form on page 15 and mail it to FHNA, PO Box 6478 Baltimore, MD 21230; *or* go to our website www.FederalHillBaltimore.org and click on the "Join Now" link under the "Become a Member" box on the far right; *or* simply attend a meeting and join on the spot! Please feel free to email us at eHillsider@gmail.com if you have any questions or concerns. **Federal Hill needs you!**

There are a couple important dates to remember this month. January 15 is the first FHNA meeting of the year. We have several significant topics on the agenda, but of particular interest is the escalating subsidence of Federal Hill. BCRP and others will present their short- and long-term plan to promote stability on the slope. South Harbor Renaissance will discuss the latest on their playground project in Federal Hill Park. Last but not least, the Waterfront Partnership will join us to discuss a very exciting project on Rash Field. We hope to see you at Jesus Our Redeemer Church (113 Warren Avenue) for what promises to be a lively, informative discussion

We also hope you will join BOPA and Mayor Pugh for coffee and donuts with artist Samuel Holmes on Saturday, January 26 to celebrate his joyful new sculpture at Robert Baker Park, the gateway to the South Baltimore Peninsula.

You will find these and several other notable dates in this month's calendar of events. In the meantime, stay safe and warm. Hope to see you soon!

Beth



Painting by Crystal Moll

EVENTS TO REMEMBER

- Jan 15 FHNA General Membership Meeting
6:30pm @ Jesus Our Redeemer Church
113 Warren Ave
- Jan 21 Martin Luther King Holiday
City offices and services closed
- Jan 26 Celebration of Robert Baker Park @
11am corner of Key Hwy & Light St
- Jan 27 FHSNA Chili Cook-off
5pm @ Little Havana

IMPORTANT: DOT has released a survey about mobility and the impact of dockless vehicles (scooters and bikes). The survey will be open for about a month and will inform the evaluation of the dockless pilot program. Residents can take the survey online at <https://docs.google.com/forms/d/e/1FAIpQLSd2P-kaDFx4Q91QbjtQML6YwEtLkm4ekoWqDU6wxiNfsfL16g/viewform>

INFORMATION PAGE

Federal Hill Neighborhood Association Board of Directors

Officers

President:

Beth Whitmer <whitmeba@gmail.com>

Vice President:

Walt Ettinger <ettingew@gmail.com>

Treasurer:

Emily Lamasa <selamasa@gmail.com>

Secretary:

Michelle Li <mililors9@gmail.com>

Board Members at Large

Nancy Gordon <nancyellen@outlook.com>

Bob Merbler <bmerbler@homesale.com>

Ted Millsbaugh <tmillsbaugh@venable.com>

Jennifer Morgenstern <jmorgenstern1392@gmail.com>

Aderonke Omatade <aomotade@hotmail.com>

Faith Millsbaugh <ftmillsbaugh@comcast.net>

FYI

Councilman Eric Costello 410-396-4816

Sen. Bill Ferguson 410-841-3600

Del. Robbyn Lewis 410-841-3772

Del. Luke Clippinger 410-841-3303

Del. Brooke Lierman 410-841-3319

BMZA Hearings – every other Tuesday, start time varies **Planning Commission Hearings** – every 3 weeks, on Thursday, 1:30pm
CHAP Hearings – usually once per month, on 2nd Tuesday, 1pm **UDARP Hearings** – every 3 weeks, on Thursday, start time varies

Planning department agendas

<https://pc.baltimorecity.gov/agendas-staff-reports/2017-agendas-staff-reports>

Zoning hearing dockets

<https://zoning.baltimorecity.gov/2017-zoning-dockets>

Code violation/citation search

http://cels.baltimorehousing.org/Search_On_Map.aspx

Report potential violations

<https://baltimore-csrprodawi.motorolasolutions.com/Home.mvc/Index>

Office of the Zoning Administrator

<http://www.baltimorehousing.org/zoning>

FHNA Committees

Consider Getting Involved

Please contact Beth Whitmer at 512-965-4065 or whitmeba@gmail.com and express your interest. You will be welcomed.

Beautification/Green:	Mike Dickensheets
Block Captains:	open
Grants:	Peg McCarthy
Hillsider:	Jeannie Malkiewicz Anne Nelson
Business Relations:	Faith Millsbaugh Beth Whitmer
Local Development:	Rufus Lusk Bob Merbler
Membership:	Jennifer Morgenstern
Parking:	John Bacci
Preservation/Design:	Fran Landolf
Public Safety:	open
Schools Liaison:	Jessica Damen
Social:	Nancy Gordon Sharon Johnson
South Harbor Renaissance Liaison:	Walt Ettinger
Technology:	open

DIGITAL HARBOR CONTACT INFORMATION

If you have concerns, questions or issues regarding Digital Harbor Students in and around our community please use the following contacts:

1. Travis Laird, Dean of Students, 443-651-9342 (texting is best), tvlaird@bcps.k12.md.us
2. Shannon Mobley, Principal, 443-240-0972 (texting is best), smobley01@bcps.k12.md.us

As always, if you see something dangerous or criminal please dial 911.

Art Beat of Fed Hill #harborsouth

Monthly we are going to share highlights of the art and music happenings in our neighborhood. With AVAM, School 33 Art Center, the Crystal Moll Gallery and Tradestone Gallery, you have to just walk out your door to enjoy the Art Beat!



American Visionary Arts Museum
800 Key Hwy

Happening: Weekend Walk-In Workshops

Join us for a hands-on, drop-in, art-making workshop once a month in the AVAM classroom! Our Education staff will help you explore new creative territory & make a project inspired by one of our beloved visionary artists. Supplies & boundless inspiration provided! P: 410-244-1900 www.avam.org

School 33 Art Center
1427 Light St
Happening: Nature as A Metaphor For



Economic, Emotional And Existential Horror.

Stephanie Barber utilizes words as sculptural elements to contemplate the morphological state of language and nature. On view thru Feb 2, 2019 Hours: 10am-6pm www.school33.org



Tradestone Gallery

803 Light St Happening: Tradestone Gallery provides high quality Russian arts and crafts. 410-689-5550 Hours 10-6 pm www.tradestonegallery.com



Crystal Moll Gallery
1030 S Charles St
Fine Art & Custom

Framing Shop. Happening: 18 Artist of 2018

This exhibition showcases the works of 18 of our fab artists. Closing Reception January 17th 6-8. www.crystalmoll.com 410-952-2843/Tues-Sat 12



Royal Sonesta 550 Light Street

Happening: Group Exhibition

The Crystal Moll Gallery presents paintings by Pat Lee (*Balcony*), Jill Basham, Crystal Moll, Beth Bathe & Palden Hamilton and others. This free exhibition is open on the 2nd Floor at the Hotel More Info 410-952-2843. crystal@crystalmoll.com

Dockless Shared Scooter and Bicycle – Opportunities for Input

Please first read FAQs on reverse



How is the Pilot Program going?

Evaluation is still in progress, but we can see that ridership is high! What we know is that from August 15- November 30 there have been:

- Over 500,000 Rides
- Over 130,000 Riders* (*some may have ridden scooter from each provider*)
- An average 4.2 rides per scooter per day, even on a rainy 40 degree day Baltimore City saw 1.6 rides per scooter- this is compared to a national average of 1.7 rides per day for docked programs.

We can also see that the companies are adhering to the geographical equitable distribution of scooters requirement. While this is encouraging, we are still working to gather more data which is harder to track. This includes crash rates, how equitable access has functioned across the city, and the general public perception.

How can we help shape a potential permanent program?

- Share email address dot-community@baltimorecity.gov . Individuals can email feedback and groups can send recommendations to this address.
- Participate and share the forthcoming Community Survey!
- Stay tuned as DOT works to shape support to programs

What aspects of a permit could DOT potentially control?

Supposing that enabling legislation is passed, DOT could require dockless vendors to adhere to certain requirements through a permitting process. Aspects outlined in that permit could include:

- Fleet size – The number of companies, the number of vehicles allowed on the streets, density
- Rebalancing requirements – Where the vehicles must be placed in the morning/ afternoon each day
- Safety standards – Vehicle requirements, safety zones, no ride zones, slow zones, speed limits, etc.
- Education plans – How vendors inform users of laws
- Equity plans – How vendors assure low barrier access and promote use by the underserved

DOT would ultimately decide these requirements, but we are accepting input from the community. Ideally groups will discuss and consolidate any recommendations.

How could DOT provide support to a potential program?

In addition to controlling the shape of the permit, DOT plans to support any program. This could take the form of:

- Educational outreach to all roadway users – Messaging and campaigns about safety for all roadway users.
- Engagement with communities who need more transportation options – We plan to work with partners to shape this program, so stay tuned.
- Improved infrastructure for riding – Providing safe and well maintained places for riding.
- Improved infrastructure for parking – We plan on working with communities to select locations, so stay tuned.

continued on page 5

continued from page 4



Dockless Shared Scooter and Bicycle Frequently Asked Question

Why are there scooters all over Baltimore suddenly?

Baltimore City, led by DOT, launched a Pilot Program for shared dockless vehicles which will last from August 15, 2018 until February 28, 2019. These vehicles can include bicycles, e-bicycles, and e-scooters which are available to the public for rent. You can use the vehicles to catch your bus, go to a meeting, for fun or any reason you want to!

Who owns them?

The Scooters are privately owned and rented out by the minute using a smartphone app. Currently, two companies rent electric scooters within Baltimore City: Lime and Bird. Additional companies could join them in coming months and we could start to see bicycles on the streets too. Lime and Bird both entered into a pilot agreement with the City of Baltimore that gives them legal permission to operate.

What does it mean to be a pilot program?

A pilot program is a temporary program which Baltimore City is evaluating before making it permanent. The City is evaluating the aspects like the safety and equity of the program through the Dockless Vehicle Committee.

Is this costing taxpayer money?

The pilot program is not costing the City any money- the companies are actually paying to operate on City streets.

How do I find and rent a scooter?

Go to the Bird or Lime website and download their app. You'll need a credit or debit card and a driver's license or state ID. Once you have the app, you can locate and unlock scooters using your phone.

Are there low income payment options?

All companies are required by Baltimore City DOT to provide a low income plan.

View Lime's plan here: <https://www.li.me/community-impact>

View Bird's plan here: <https://www.bird.co/one-bird>

I've never ridden a scooter before, do you have any tips?

- If it's your first ride, try it out in a safe location and please take it slow. Learn how to balance, steer, and how the scooter handles bumps in the road before accelerating.
- Riders under 16 are legally required to wear a helmet, although recommend for all users.
- **Scooters should not be ridden on the sidewalk;** scooters should ride on the street in the same direction as traffic. Riders are safest in a bike lane or on a low traffic street riding on the right-hand side of the street.
- If you are passing a person on foot, be sure to give them warning! The scooters all have bells, but you may also say, "Passing on your left" to let the person know.

How should I park a scooter when I'm done with my ride?

Scooters should be parked courteously- not blocking sidewalks, bus stops, driveways, or doorways. You can park it next to a bike rack, but allow space for bicycles to still use the rack.

How can I report a scooter that is not parked appropriately?

Please contact the companies directly:

- Bird: hello@bird.co or 866-205-2442
- Lime: Call: 1 (888)-LIME-345 | Text: 1 (888)-546-3345

I want to report something I saw happen with a scooter, what should I do?

If it is a life threatening emergency, please call 911 immediately. If it is not an emergency, you can notify the company. All scooters are equipped with GPS, so you should immediately write down the time and location of the incident.

Our New Years Resolution is to make you **SMILE**

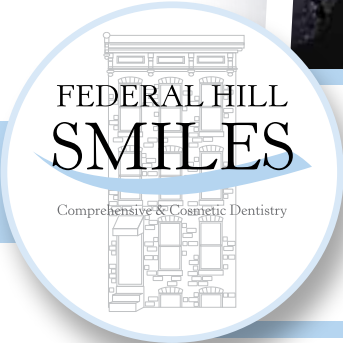
At Federal Hill Smiles, our patients are our top priority. From the moment you walk in the door, you'll be welcomed by a caring staff in a relaxed, stress-free environment where the everyone can feel at ease.

CALL TO SCHEDULE YOUR APPOINTMENT TODAY!

**Sedation • Cosmetic • Implants
Orthodontics • Whitening • Botox
Juvederm • General Dentistry**

**410.561.6483
BaltimoreSedation.com**

**Denise M. Markoff, DDS, FAGD
835 Light Street • Baltimore, MD 21230**



\$100 OFF

Comprehensive New Patient Visit

New patients only. Expires in 30 days. Not valid with other discounts. Used in conjunction with dental insurance.



WHERE STYLE & WELLNESS MEET

STUDIO 92 | SALON | SPA

THE FOUNDRY ON FORT | 921 E. FORT AVE - SUITE 108
410.783.SPAS (7727) | STUDIO921.COM | INFO@STUDIO921.COM



THIRD THURSDAY
Visit galleries, shops, & boutiques for specials & refreshments from 6-8pm,
JANUARY 17TH

Your amazing for keeping it local!



***Visit 3 Third Thursday businesses to receive 10% off dinner!**
May not be combined with other specials.
Participating businesses will be sporting balloons!

Beyond the Hill: Adventures in Global Home Cooking

January - Morocco

By: *Andy Monick*

January's recipe is tajine, a dish from Morocco. Although the dish is named after the vessel in which it's traditionally prepared, the home cook can make a tasty version without the eponymous pot.

¼ c olive oil, divided
 1 lb chicken (boneless, skinless breasts or thighs), chopped into about ½" cubes
 1 lemon, juiced (zest reserved)
 1 T paprika
 ½ T turmeric
 1 t coriander
 1 cinnamon stick
 ½ t garlic powder
 ½ t cardamom
 ½ t allspice

1 large yellow onion, finely diced
 2 T minced garlic
 1 T minced ginger
 2 large sweet potatoes, cubed
 4 carrots, chopped

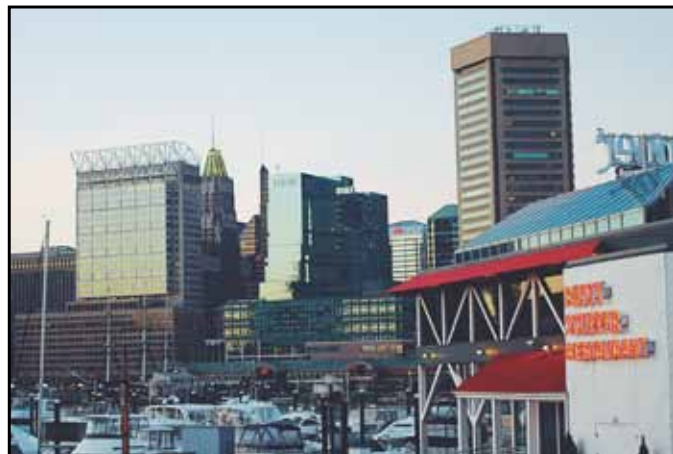
2 c chicken stock
 1 can chickpeas, drained
 1 can diced tomatoes
 Zest of ½ lemon
 1 T tomato paste
 1 T honey
 ½ c dried apricots, diced, or raisins
 Salt and pepper, to taste



1. In a bowl or freezer bag, toss the chicken, 2T olive oil, lemon juice, and spices. Allow to marinate in refrigerator for at least 4 hours.
2. In a Dutch oven or large pot, warm the remaining 2T olive oil over medium-high heat.
3. Add the onion and sauté until aromatic, about five minutes.
4. Add the garlic and ginger and sauté another minute.
5. Add the sweet potatoes and carrots. Sauté another five minutes.
6. Add the chicken stock, chickpeas, diced tomatoes, lemon zest, tomato paste, honey, apricots, and chicken mixture. Simmer over very low heat for at least an hour – until the chicken is cooked and tender.
7. Season with salt and pepper to taste. Serve over couscous or rice.

Rusty Scupper

Restaurant & Bar



Join us for Baltimore Restaurant Week!
 January 11-20, 2019
 (Weekends excluded)

Rusty Scupper

402 Key Highway | Inner Harbor Marina | Baltimore, MD
 410.727.3678 | www.rusty-scupper.com

PRIVATE PARTY FACILITIES • COMPLIMENTARY SHUTTLE • DISCOUNT PARKING

A New Sculpture Added to Entrance of Federal Hill

by Kevin Lynch, SouthBMore.com

A new sculpture was installed this month at Robert Baker Park located at the southeast corner of Light St. and Key Hwy. The sculpture sits just above the brick 'Federal Hill' sign.

The steel sculpture created by Baltimore artist Sam Christian Holmes is 14 ft. tall and 20 ft. wide. Holmes provided SouthBMore.com the following description about the piece:

In the Garden, Woman and Man. Robert Baker Park Baltimore, Maryland tells the tale of the union of Woman and Man in a Garden of Eden. Their spiritual presence is represented by a Mermaid adorned with basket boat above her head in the case of the woman and a crowned king for man. She is regal, busted and reaching up. He is strong erect, with a chest filled with the four corners of the universe connecting him to the universal father. In between them is a centered sacred heart surrounded by a starburst shield. She is flanked by her guardian female spirit often represented by the African saint Yemenja. The male is flanked by a shield with a fedora center.

My works are born out of an iconography in respect for the blacksmithing traditions associated with the African diaspora. The language of the wrought iron gate/fence was during a creolization of the captive craftsman caught in the slave trade and West African bronze workers. They created images long associated with the religious practices found throughout the African harbors of export. You can find these Africanisms along the Middle Passage, from places like Brazil, throughout the Caribbean, up to the American south and even the Bronx and Brooklyn. My marks reflect that history while exploring my own personal narratives.

The sculpture project, which has been in the works for a couple of years, was spearheaded by Federal Hill residents Jessica Damen and Margaret McCarthy. It had the support of the Federal Hill Neighborhood Association (FHNA), which was shown preliminary renderings of the piece.

Some bushes had to be removed to clear space for the sculpture. The sculpture was installed by LandArt Associates.

The \$28,000 project was funded by a \$22,000 Baltimore Office of Promotion & The Arts (BOPA) Transformative Art Prize grant and a \$3,000 donation from FHNA. For the remaining \$3,000, FHNA launched a GoFundMe campaign that has currently raised \$925.

Since the sculpture sits on public property, it has to be donated back to the City of Baltimore.

FHNA is planning a ceremony to officially dedicate the sculpture in January.

On the southern end of the South Baltimore Peninsula, the South Baltimore Neighborhood Association (SBNA) will begin construction in the coming weeks on a new 'South Baltimore' sign at the northeast corner of S. Hanover St. and Wells St. It is expected to be completed in February.



Recalculating Your Path versus New Year's Resolutions

By C. Wheels

Culturally, we are expected to speak or think about New Year's Resolutions as a way of correcting paths that did not serve us last year. Common thoughts are *lose that weight, be more kind, no more debt, yoga every day, exercise regularly*, etc. How many times have you achieved even one of those goals? Or even remembered you had made the resolution by March 1?

I propose a new way of looking at New Year's resolutions – think of them as recalculating a route, just like your GPS lady does. We set our intention at the beginning of the year. We start walking down that path, staying mindful of the discipline needed to accomplish the goal. But then life happens, other issues come up, and we get side-tracked and then discouraged.

But our goals were not wrong. We gave up without realizing our mistakes can still be for our good. Instead of giving up, embrace the misstep. Think of the voice on the GPS

when you make a wrong turn. Recalculating. Rerouting. Forget what you may have been told about “Goals can only be achievable through discipline and consistency.” There is no shame, there is no guilt. There is just a recalculation. Maybe we can start to be kinder to ourselves and to those in our spheres of influence.

In the same way, when someone does something that bothers you, allow them the grace of a recalculation. Perhaps our old ways of passing judgment without full knowledge have led to great harm to that person and others. The GPS lady offers a better way, without judgment – recalculating.


Perhaps this year we can focus each month on a word that would uplift our community. One month we could focus on *kindness* to help our community operate more smoothly. One small gesture of kindness expands the light in others that then lights up the world around us. Another word would be *generosity* to those less fortunate than ourselves or even

to members of our own family. Other monthly focus words could be *gentleness*, because no struggle can find a foothold without being fed by two opposing forces, and *grace* to accept each other as we are and the world unfolding around us with perfection.

When we take a misstep from our intention of kindness, grace, or whatever we are striving to accomplish, remember the GPS lady..... it's just a reroute. You're recalculating.

I hope you enjoy the journey of life this year with intention and allow for many recalculations that may lead to wonderful surprises.

In Kindness and Humility, Namaste



BALTIMORE CITY
DPW
DEPARTMENT OF PUBLIC WORKS
RUDOLPH S. CHOW, P.E.
DIRECTOR


Homeowner Tips

Pipes and water meters can freeze when the temperature remains below 25 degrees for extended periods of time.

We offer the following tips to help protect water lines during periods of cold weather:

- Let a thin stream of cold water run from a basement faucet.
- If your interior pipe is frozen, warm it with hot air from a blow dryer where it enters your house.
- Know the location of the water shutoff valve in your home and check it periodically.
- Shut off water to outside faucets.
- Monitor your sump pump. A frozen drain pipe could result in a flooded basement.
- Insulate pipes in unheated parts of your house.
- Keep bottled water on hand.

For water emergencies in Baltimore City please call 311 or (410) 396-5352 in our Baltimore County service area.



January Theater Round-Up

By Liz Nelson

Baltimore Center Stage - 700 North Calvert Street

Fun Home

Book and lyrics by Lisa Kron

Music by Jeanine Tesori

Based on the graphic novel by Alison Bechdel

Directed by Hana S. Sharif

January 17 – February 24 | Tickets range \$49 - \$74

Welcome to the Bechdel family. But just what family is it? Through the searching eyes of daughter Alison—aged 9, 17, and then 42—we meet her ever-shifting and sometimes unreliable memories of brothers, mother, and above all her repressed father, along with recollections from the family funeral home to Alison’s coming out. Based on Bechdel’s own best-selling illustrated memoir, this poignant tale harnesses every facet of music and theater to explore and unravel the mysteries of childhood and the

surprising secrets that shape a life. Winner of the 2015 Tony Award for Best Musical, from the composer of *Caroline, or Change* and the writer of *2.5 Minute Ride*.

Content Advisory: Based on Alison Bechdel’s graphic novel and her real life, this musical explores some coming-of-age topics best suited for middle schoolers and up. www.centerstage.org

Everyman Theatre – 315 W. Fayette Street

Everything is Wonderful

By Chelsea Marcantel

Directed by Noah Himelstein

January 29 – February 24 | Tickets \$43 - \$65

Imagine a knock at the door from the hand complicit in a family tragedy: When the repentant driver in a fatal collision seeks forgiveness from the Amish family whose sons’ lives he claimed, faith guides them to welcome him into their community—and their home. But as inconvenient truths

from the family’s past are discovered, can their outpouring of empathy be as limitless as it seems? Resident Company members Bruce Randolph Nelson and Deborah Hazlett plumb the depths of an outlying culture in this enthralling, critically acclaimed drama about a peaceful community wrestling regret, redemption, and contradiction. www.everymantheatre.org

Fells Point Corner Theatre - 251 South Ann Street

Jerusalem

By Jez Butterworth

Directed by Ann Turiano

January 18 – February 3 | Tickets range \$19 - \$24

St. George’s Day in England, the Morning of the county fair, the local drifting soul and pied piper of chaos Johnny “Rooster” Byron stirs the souls of his countrymen to forego the comforts of modern suburban life and

continued on page 11



Eve Hamper, Agent

1118 Light Street Ste A

Baltimore, MD 21230

Bus: 410-528-8900

Fax: 410-528-7733

eve@evehamper.com

Office Hours:

Mon-Fri 9:00am to 5:00pm

Saturday 10:00am to 2:00pm

Evenings by Appointment

We’re all in this together.

State Farm® has a long tradition of being there. That’s one reason why I’m proud to support The Federal Hill Community.

Get to a better State®.



1211007

State Farm, Bloomington, IL

Your Realtors for Life.
Serving the Baltimore metropolitan area.

STEVENMURPHY
REAL ESTATE

BERKSHIRE HATHAWAY
HomeServices
PenFed Realty

A member of the franchise system of BHH Affiliates, LLC

office: 410-547-5710 | www.live21230.com

continued from page 10

raise their spirits in the countryside. His children want to spend the day with him, thugs want to teach him a lesson, the authorities want rid of him, but Rooster just wants more out of life. Having played on the West End and then to Broadway (and back to the West End), Jerusalem is a darkly comic and modern meditation on the spirit of a nation. www.fpct.org

The Hippodrome Theatre – 12 North Eutaw Street

Roald Dahl's Charlie and the Chocolate Factory

Book by David Greig

Music by Marc Shaiman

Lyrics by Marc Shaiman and Scott Wittman

Directed by Sam Mendes


January 22 - 29 | Tickets range \$99 - \$250

Willy Wonka is opening his marvelous and mysterious chocolate factory...to a lucky few. That includes Charlie Bucket, whose bland life is about to burst with color and confection beyond his wildest dreams. He and four other golden ticket winners will embark on a mesmerizing joyride through a world of pure imagination. www.france-merrickpac.com


Winter Weatherization Tips from Ace Hardware

Baby it's cold outside! Here are some tips from our friends at Ace Hardware to help keep the inside of your home warm and toasty.

1. You can save up to \$300/year by adding weatherstripping products and insulation. Most projects take 15 minutes or less.
2. You can reduce your home's carbon footprint by as much as 15% by weatherstripping and adding insulation.
3. Many homes, new and old, are left with no insulation around or behind exterior switch and outlet boxes which results in air infiltration and leakage.
4. There are a number of products designed for easy installation that don't require any tools. Cinch products, available at Ace, are created in partnership with 3M to bring customers an easy to use, long-lasting quality product with ultra-bonding adhesion from a brand you can trust.



DISCOUNT LIQUORS BEER & WINE
PHONE: 410-539-7757



901 South Charles Street Baltimore, Maryland 21230
Every Tuesday 10% off 3 bottles of wine
Join the Wine Club and get 25% off

FEDERAL HILL ACE HARDWARE 1214 Light St. Baltimore, MD
(410) 244-5910 | @Cool_Hardware



SALE \$2.99 & up

\$5.49 & up

Available at **FEDERAL HILL ACE HARDWARE**

Get these great deals on storage and more at Ace!

Expires 2/3/19 **\$10 off*** your regular-priced purchase of \$50+
SKU HILLPAG10

Expires 2/3/19 **20% off*** one item when you spend \$40 or more
*Max. \$15 off
SKU ANYONE20

Ladies' Night Save the date!
Tuesday March 12 6-8pm

One time use only. Not valid with another offer or discount. Exclusions may apply.

Old Otterbein United Methodist Church

Worship With Us

Sunday Mornings at 10:30 A.M.



112 West Conway Street
Baltimore, MD 21201
410-685-4703

www.oldotterbeinumc.org

January AARFies of the Month

Salem

Hey. Salem here. I used to be a skinny little guy. That was right after I was dumped. Then a good Samaritan found me and helped me bulk up. Now I'm living with a foster family – and I'm ready for my forever home.

My foster mom calls me “mellow.” Yep, that’s how I roll. (Unless there are pesky kittens around, that is. Not a fan of kittens, though I can peacefully co-exist with other mellow adult cats and dogs). I’m the kind of cat who likes to keep his cool by lounging on the bed, my favorite spot, far from the madding crowd. While I’m low-key, no one has to guess how I feel; when something doesn’t suit me, I grumble. It seems to get the message across and also makes my foster mom laugh. Who knew I was funny?

Like anyone who’s been dumped, I take a while to assess new situations. But once I feel at home, I’m a very nice boy to have around.

If you’d like to take me home, please fill out an adoption application at this website <http://www.animalalliesrescue.org/adoption-application> and choose me - SALEM! My adoption fee is \$150 and includes all of my routine vetting, rabies and distemper/parvo vaccinations, FeLV/FIV testing (kitties), deworming, spay/neuter surgery, heartworm testing, monthly heartworm prevention, microchip, boarding and transportation costs if applicable, along with a free* trial offer for 30 days of 24PetWatch pet insurance!



Cooper



Hi! I’m Cooper, a 7-year-old Pug/Jack Russell mix and a perfect gentleman. I’m housebroken, love long walks (I’m great with leash walking), love to learn new tricks, and love my toys. I’d make a great companion for someone who is home most of the day or with another dog who is low energy. I don’t love being alone and I’d definitely rather hang out with my family (though I’m not destructive when I am left alone). I can’t zoomie too much, as I have severe arthritis in my back legs, but my doctors say I need lots of walking to build my muscles so let’s walk!

If you’d like to take me home, please fill out an adoption application at this website <http://www.animalalliesrescue.org/adoption-application> and choose me - Cooper! My adoption fee is \$300 and includes all of my routine vetting, rabies and distemper/parvo vaccinations, FeLV/FIV testing (kitties), deworming, spay/neuter surgery, heartworm testing, monthly heartworm prevention, microchip, boarding and transportation costs if applicable, along with a free* trial offer for 30 days of 24PetWatch pet insurance!



*Dependent on meeting eligibility requirements: Dogs 8 weeks to 10 years of age and cats 8 weeks to 12 years of age. This offer is not currently available to residents of CA, PA or RI.

ROBERT MOLL ARCHITECT

New Year, New Projects!

FREE INITIAL CONSULTATION

New Homes - Additions
Renovations - Businesses
Restaurants - Energy Conscious
& Aging at Home Design

(410) 952-4302
www.robertmollarchitect.com
bob@robertmollarchitect.com



Download the
Martini
Lutheran app

Visit your neighborhood church
Historic Martini Lutheran
11 a.m. Sundays
On site parking
100 W. Henrietta
410-752-7817



Christ Lutheran Church

Sunday Traditional Services -
8:30 am & 11:00 am

Sunday Contemporary Service - 8:45 am

Wednesday Services - 11:00 am & 7:15 pm

701 South Charles Street
Baltimore, MD 21230

410-752-7179

<http://christinnerharbor.org/>

Some things
just belong together



**Save when you insure your home
and auto with ERIE.**

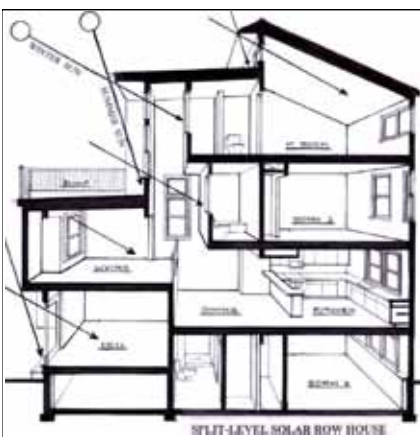
See what you might save. Call today.

**Upper Chesapeake
Insurance Agency**

900 S. Charles Street
Baltimore, MD 21230
insuranceinfo@eriequote.com
410-385-0455



Discounts, rates and coverages vary by state and are subject to eligibility and applicable rates and rules.
Go to erieinsurance.com for company licensure and territory information. S1693 10/15



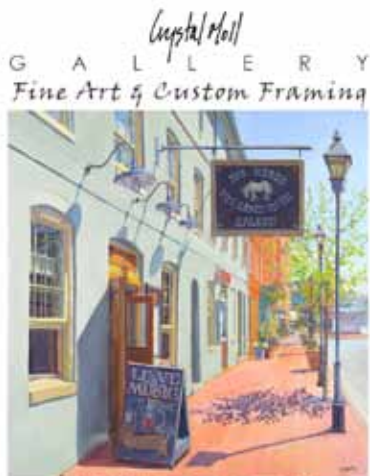
SPLIT-LEVEL SOLAR ROW HOUSE

**Robert R. Gisriel
AIA, Architect**

Specializing in:
Historic Rehab's,
Kitchens, and Additions

410-625-0392

To see projects, go to:
www.gisriel-architect.com



**FINE ART
PRINTS
ART TILES &
FRAMING**

1030 South Charles Street
Tues-Sat 12-6
www.crystalmoll.com
410-952-2843



Jim Craig
410-752-1300
912 Light Street
Baltimore
JimCraig1@allstate.com



Allstate.
You're in good hands.
© 2011 Allstate Insurance Company www.allstate.com

Chili COOK OFF

SUNDAY, JANUARY 27TH
5:00 PM - 9:00 PM
@ LITTLE HAVANA

TASTE & VOTE ON OVER 20 CHILIS - DRINK SPECIALS - 50/50 RAFFLE

\$10
(\$15 @ DOOR)

LIVE MUSIC BY:
ROSES RUST

BROUGHT TO YOU BY:
Federal Hill South
Neighborhood Association

ENTER YOUR CHILI.
GET TICKETS.
ASK QUESTIONS:
WWW.FHSNACHILI.COM

OWNERS & RENTERS



We want YOU to
join FHNA !

The neighborhood association
welcomes **ALL** residents to join,
participate and hold office

Federal Hillsider 2019 Advertising Rates

2019 Ad Rates (amount per appearance)

Placement Agreement Term	1 time	3 times	6 times	12 times
Size (in inches)				
Business Card – (2.0 x 3.5)	\$39	\$33	\$30	\$28
1/6 Page (4.75 x 2.25)	\$66	\$55	\$53	\$50
Quarter Page (4.5 x 3.5)	\$99	\$91	\$87	\$82
1/3 Page (9.9 x 2.25 or 4.75 x 4.75)	\$132	\$121	\$115	\$110
Half Page (9.9 x 3.75 or 7.75 x 5)	\$198	\$182	\$174	\$165
Full Page (9.9 x 7.75)	\$330	\$303	\$285	\$275

The deadline for submission of ads is Close of Business on the 25th of each month.

Ads can be in PDF, TIF or JPEG format

(We will assist with designing your ad, if desired).

Send ads to fnahillsider@gmail.com

You will be invoiced for your ad on a monthly basis.

Thank you for your support of our neighborhood.

The *Federal Hillsider*, the monthly publication of the Federal Hill Neighborhood Association is delivered through the mail slots of 1,300 households in the Federal Hill neighborhood and is placed in selected neighborhood businesses and on our website and Facebook page. Circulation is over 2,500.

The *Hillsider* is created each month by an all volunteer staff; therefore, all advertising revenue in excess of printing expense is invested back into the community.



2019 FHNA Membership Mail In Form

*If you prefer to register and pay online please visit the FHNA website:
www.FederalHillBaltimore.org -- click on Membership on top right of page*

Member 1) Name: _____

Email: _____

Phone#: _____

Address: _____

Member 2) Name _____

Email: _____

Phone#: _____

Address: _____

Please indicate if you are a Resident ___(Voting) or Non-Resident ___ (Non-Voting) Member

Annual dues are \$20.00 PER PERSON

Make checks payable to: Federal Hill Neighborhood Association, Inc.
Return via USPS to: FHNA c/o P.O. Box 6478 Baltimore, MD 21230
Or use PAYPAL to register on our website

Your top priorities for FHNA:

1) _____

2) _____

3) _____

4) _____

* Your email address will be added to FHNA's confidential email database for internal use only.



BERKSHIRE HATHAWAY
HomeServices
Homesale Realty

Federal Hill Office
1011 Light Street | 410-727-0606
• Homesale.com •

\$799,000



FEDERAL HILL
226 E. Montgomery St.
Cynthia Conklin & Bob Merbler
443-629-0152

\$329,000



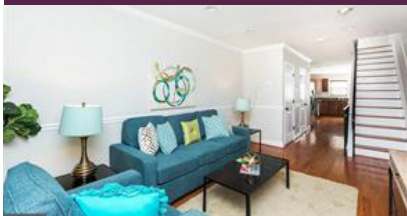
HARBOR VIEW
100 Harborview Dr. #1003
Kimberly Huskins
443-627-2852

\$469,900



CANTON
2814 Dillon St.
Kimberly Huskins
443-627-2852

\$419,000



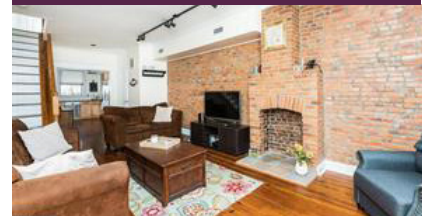
FEDERAL HILL
1824 Light St.
Stacey Friedman
410-303-5747

\$249,000



FEDERAL HILL
911 S. Charles St. #310
Timmie Taff
443-226-3223

\$279,900



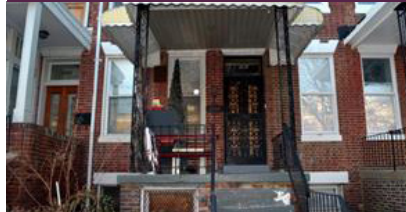
FEDERAL HILL
1737 Jackson St.
Stacey Friedman
410-303-5747

\$354,999



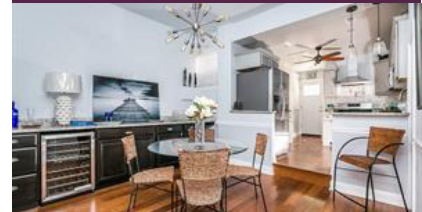
MADISON PARK
2233 Madison Ave.
Brigitte Williams
443-250-1841

\$148,000



RESEVOIR HILL
2404 Callow Ave.
Brigitte Williams
443-250-1841

\$264,900



UNION SQUARE
102 S. Mount St.
Brigitte Williams
443-250-1841

\$299,900



FEDERAL HILL
52 W. West St.
Mary Lapides
410-804-6379

\$229,900



FEDERAL HILL
911 S. Charles St. #402
Mary Lapides
410-804-6379

\$274,500



FELLS POINT
2232 Essex St.
James Baldwin & Andrea Griffin
410-591-9183