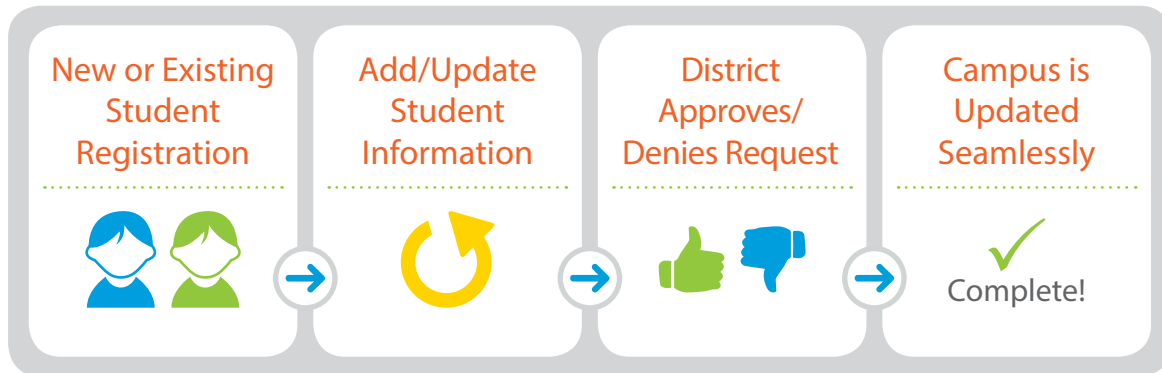


# Campus Online Registration - Prime

New and existing student registration is a paper-intensive, inefficient process. Campus Online Registration - Prime is designed to streamline these processes with a configurable, flexible solution that will adapt to meet your district needs.



## Benefits

- Present pre-populated screens to current parents and retain integrity of submitted household data through Campus Census. District staff verify information prior to it being approved for use in the core system.
- Eliminate duplicate data entry by staff and parents for multiple children in a household.
- Use Campus Multi-language Editor for non-English speaking households.
- Send emails via Campus Messenger to notify parents of updates and changes.
- Provide extended information by adding links within the application (PDFs, district collateral, etc.).
- Using health processing tools, review and confirm critical health information prior to enrollment while maintaining student health confidentiality.
- Optional customizations available.

## Key Functionality

- Enable parents to update and/or enter demographic, health provider, allergy, health conditions, emergency contact, and student relationships.
- Link to custom forms to meet district needs.
- Offer "save my work" functionality so parents can return later to complete the registration process, if interrupted.
- Offer the ability to print or save registration package.
- Run four different reports for application and enrollment status.
- A digital repository allows you to upload utility bills for address verification, birth certificates, immunization files and transcripts.
- Use the process alerts to communicate notifications to appropriate district staff such as homeless, special ED, Health, etc.

*We understand all districts needs vary, that's why we created two options for Campus Online Registration. For details contact Paula Soucheray at 800.850.2335 or email Paula.Soucheray@infinitecampus.com.*