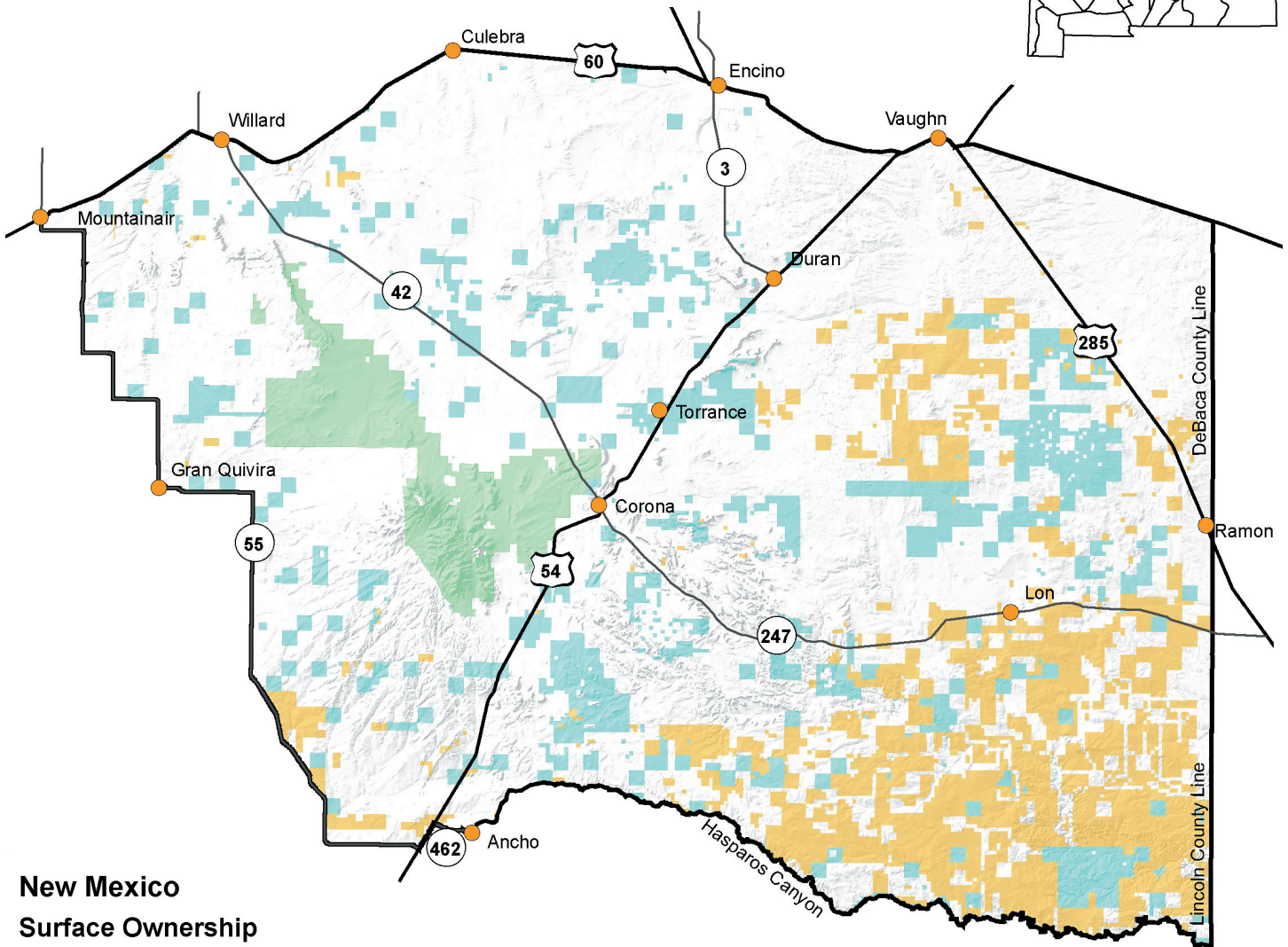
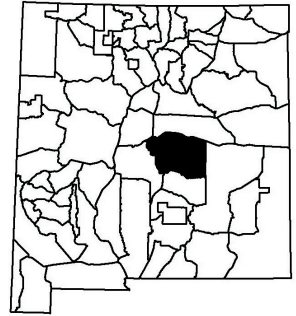




Providing New Mexico and its wildlife

**Year-round
Excellent
Services**

Game Management Unit 38



New Mexico

Surface Ownership

- Bureau of Land Management
- Forest Service
- National Park Service
- Private
- State

GMU 38: Beginning at the junction of US 54 and NM 55 and running northwesterly along NM 55 to its junction with US 60 at Mountainair, then east along US 60 to the Guadalupe-De Baca county line, then south along the county line and along the east boundary of Lincoln County to its intersection with Hasparos Canyon, then west up Hasparos Canyon to the Southern Pacific Railroad tracks northeast of Ancho, then south along the railroad tracks to their intersection with NM 462 at Ancho, then west along NM 462 to its junction with US 54, then south along US 54 to its junction with NM 55.

Maps for GMU 38

BLM Maps: Belen Quad, Corona Quad, Carrizozo Quad, Fort Sumner Quad, Salt Creek Quad, Socorro Quad, and Vaughn Quad.

US Forest Service Maps: Cibola National Forest, Mountainair District

These and other maps may be found at NM Public Lands Information Center, (877) 851-8946, or visit <http://plicmapcenter.org/NM/>.