



SYRACUSE URBAN FELLOWSHIP

APPLY YOUR PASSION FOR URBAN EDUCATION



SYRACUSE CITY SCHOOL DISTRICT & SYRACUSE UNIVERSITY



FELLOWSHIP PROGRAM

SYRACUSE CITY SCHOOL DISTRICT & SYRACUSE UNIVERSITY

In exchange for a 5-year commitment to teach in the Syracuse City School District:

- Full tuition toward a Master's Degree in Education at Syracuse University
- Starting salary of \$47,500
 - » *Additional pay for prior experience*
 - » *Opportunity to earn additional \$5,000-\$8,900 by working in extended learning time school*
- Assistance with New York State Teacher Certification Process for those who possess comparable teacher certification in a another state
 - » *Includes stipend to assist with expense*

FELLOWSHIP REQUIREMENTS

CERTIFICATION

Must possess or be eligible for NYS teacher certification or possess comparable teacher certification from another state

RESIDENCE

Must reside in the city of Syracuse (generous moving allowance of \$1,500 and non-financial housing support included)

GRADUATE PROGRAM REQUIREMENTS

1. 3.0 Undergraduate GPA
2. Three Letters of Recommendation
3. Personal statement regarding career aspirations
4. Resume
5. Unofficial Transcripts



**SYRACUSE
UNIVERSITY**

APPLY TODAY

To apply please visit our website at www.joinsyracusecityschools.com and complete an application. Any questions about the program or the application process should be directed to **Scott Persampieri, Director of Recruitment** at spersampieri@scsd.us.



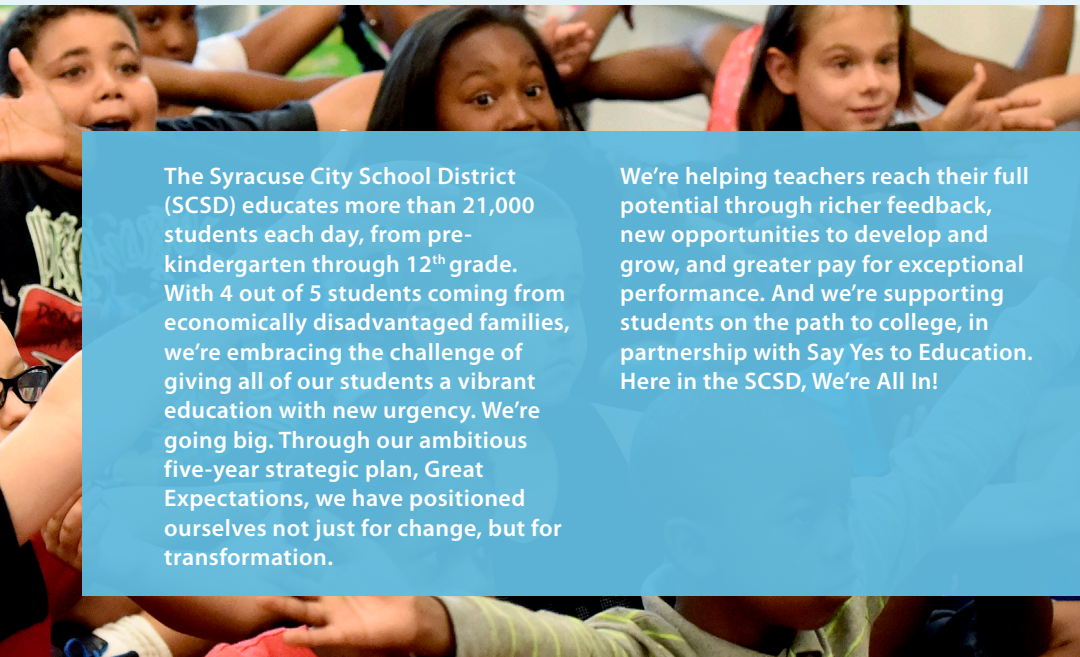


The Syracuse City School District is looking to ensure that our faculty better represents the diversity of our student body. We are looking for graduates in the teaching areas of: Mathematics, Science, English as a New Language (ENL), Library Media, Special Education, and Technology Education.

WE'RE ALL IN. ARE YOU?



SC
SD AT A GLANCE



The Syracuse City School District (SCSD) educates more than 21,000 students each day, from pre-kindergarten through 12th grade. With 4 out of 5 students coming from economically disadvantaged families, we're embracing the challenge of giving all of our students a vibrant education with new urgency. We're going big. Through our ambitious five-year strategic plan, Great Expectations, we have positioned ourselves not just for change, but for transformation.

We're helping teachers reach their full potential through richer feedback, new opportunities to develop and grow, and greater pay for exceptional performance. And we're supporting students on the path to college, in partnership with Say Yes to Education. Here in the SCSD, We're All In!

Pre-K— 12
34 Schools
21,337 Students Enrolled
14% Students with Limited English Proficiency
77% Students are Economically Disadvantaged
20% Students with Disabilities
70 Languages Spoken
4 Traditional High Schools
2 CTE-Centered High Schools

4 Traditional Middle Schools
5 Traditional Pre-K-8 Schools
12 Traditional Elementary Schools
7 Innovation Zone Schools
4 Alternative Education Programs



THE CITY OF SYRACUSE

Syracuse is the economic and educational hub of Central New York, home to Syracuse University, LeMoyne College, Onondaga Community College and a host of other institutions of higher learning. Residents of the City are assigned to schools in the Syracuse City School District, which is comprised of 34 schools and 4 alternative education programs and is considered one of the "Big Five" public school districts in New York State.

Rated fourth by Forbes in the list of the top 10 places to raise a family, the city is also ranked as one of the most affordable in the state. Residents enjoy easy access to the beautiful Finger Lakes Region and

the Adirondack Mountains, as well as the honor of being considered the home of the Syracuse Orange, New York's College Team. The fourth most populous metropolitan city in the state, Syracuse also offers a variety of historical and cultural opportunities. From the Rosamond Gifford Zoo at Burnet Park to the Erie Canal Museum, the Everson Museum of Art, the Museum of Science and Technology, the OnCenter, and more, residents have an abundance of activities at their disposal.

City population (2013): 144,669

Land area: 26 square miles

FINGER LAKES REGION

There's something for everyone in the Finger Lakes Region of New York— from wineries and museums to hiking and biking.



ADIRONDACK MOUNTAINS

Just northeast of Syracuse is the Adirondack Park, a protected area spanning millions of acres of mountain peaks, sparkling lakes, and wild spaces.

EASY ROAD TRIP

Montreal, Toronto, Boston and Philadelphia are all less than a 6-hour drive from Syracuse!

NEW YORK CITY

The "Big Apple" is only a four-hour drive from Syracuse.

WWW.JOINSYRACUSECITYSCHOOLS.COM

Apply online today!

QUESTIONS?

Email Scott Persampieri, Director of Recruitment
spersampieri@scsd.us

SYRACUSE CITY SCHOOL DISTRICT
1025 Erie Boulevard West | Syracuse, New York 13204

Board of Education

- Derrick Dorsey, President
- Patricia Body, Vice President
- David Cecile
- Mark D. Muhammad
- Rita Paniagua
- Dan Romeo
- Katie Sojewicz

Interim Superintendent

Jaime Alicea



**Stay Connected
Stay Involved**

The Syracuse City School District hereby advises students, parents, employees and the general public that it is committed to providing equal access to all categories of employment, programs and educational opportunities, including career and technical education opportunities, regardless of actual or perceived race, color, national origin, Native American ancestry/ethnicity, creed or religion, marital status, sex, sexual orientation, age, gender identity or expression, disability or any other legally protected category under federal, state or local law.

Inquiries regarding the District's non-discrimination policies should be directed to:

Assistant Superintendent for Student Support Services, Civil Rights Compliance Officer
Syracuse City School District
725 Harrison Street • Syracuse, NY 13210
(315) 435-4131

Email: CivilRightsCompliance@sccd.us

NON-PROFIT ORG.
U.S. POSTAGE
PAID
SYRACUSE, NY
PERMIT 2563