

- 100% online coursework
- Guided self-paced program
- Approved by the Texas Education Agency/State Board for Educator Certification
- Low upfront cost

Teacher Certification Course Catalog



www.etoools4education.com

Main Office: 832.220.3451

Toll Free: 1.877.218.1843



Complete online
coursework from
home

*“Education is the
most powerful
weapon which you
can use to change
the world.” Nelson
Mandela*



Our helpful staff
guides you
through each
step.

Course Description Overview

Web-Centric ACP’s goal is to guide you to meet the requirements to become highly qualified and to be the most effective educator you can be. Through the online coursework you will complete, you will learn about instructional strategies, human development, pedagogy, classroom management, and educational technology. Our coursework is designed to help you be effective in the classroom and help each child reach his potential.

Web-based Instruction

- Instruction on your schedule
- No required onsite meetings
- Complete requirements from home

Syllabus

- Gifted and Talented for the Classroom Teacher
- Proactive Classroom Management
- Engaging Children to Learn
- Coursework syllabus to guide you through the certification curriculum

Requirements

- You need access to a personal computer with high speed Internet.
- You need to communicate regularly with your Program Specialist.

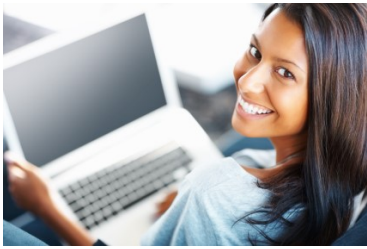
Course Categories

- Certification Secrets
- Designing Effective Instruction and Assessment
- Structures of Disciplines
- Cognitive Processing, Development, and Learning
- Fulfilling Professional Roles & Responsibilities
- Lesson Planning
- Understanding ESL and Bilingual Education for the Classroom Teacher
- Learning Styles, Theories, and Learner-Centered Concepts
- Differentiated Instruction

Field Experience Course Categories

- Technology 101
- Making Connections in the Classroom: Internet Sites
- Teaching Both Ways—Covering Your Bases
- Why Technology Is Important
- Digital Detective
- Technology Enhanced Problem Solving
- Blogging
- Mentor activities
- Organizing Learning Centers, Stations, and Cooperative Groups

Pace of the Program



Guidance from our staff

allowing you to complete requirements according to a schedule that fits your lifestyle.

to complete the requirements within three to six months of starting the program.

Web-Centric ACP is a self-paced program within the calendar of program activities for your certification path

However, you must pass your TEXES content exam and complete curriculum requirements before you can be hired. We recommend that our students work diligently

“A teacher affects eternity; he can never tell where his influence stops.” Henry Adams

Course Objectives

Module 1

- Participate in certification content testing activities
- Respect individual differences to foster a positive classroom. Realize that each student is unique and capable of learning.
- Plan instruction to meet the needs of all types of learners.

Module 2

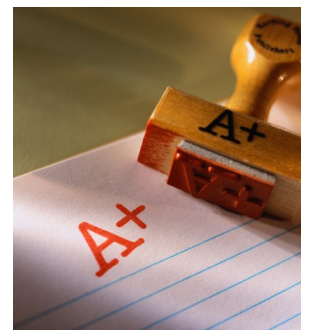
- Participate in certification content testing activities
- Learn positive and proactive ways to manage your classroom.
- Know how to empower students to take responsibility for their behavior and actions.

Module 3

- Learn how to effectively use technology in the classroom.
- Keep students engaged by planning instruction that appeals to digital learners.

Grading and Feedback

- A virtual instructor will grade your assignments and give you constructive feedback.
- Assignments include quizzes, journals, short answer assignments, forum posts, and lesson planning, to name a few.
- The minimum passing score is 80%.



Admission Requirements

- You must meet basic admission requirements and possess the necessary college credits for a particular certification area.
- You must have a personal email account, a personal computer, and internet access.
- You must add Web-Centric ACP staff members to your contacts list.

Bachelor's Degree

- You must hold a bachelor's degree from an [accredited institution](#) of higher education as required by the Texas Education Agency and Texas Administrative Code.

Minimum 2.5 Grade Point Average

- You must have a 2.5 cumulative grade point average or a 2.5 GPA for your final 60 hours of course-work.
- If you have concerns regarding your GPA, check out the [GPA exemption](#).

Certification Areas

- To determine eligibility for a particular certification area, your college transcripts will be reviewed during the admission process. Refer to the [certification areas](#) section for more information regarding admission requirements for each area.

Are You Still in College?

- If you have not graduated yet, you will be eligible to start the program during your last semester of college. Refer to the [contingency admission](#) section for more information regarding your admission options.

Did You Graduate Outside of the US?

- Teaching candidates that graduated outside of the U.S. and U.S. territories must submit the [following paperwork](#) during the admission process
- Foreign Credential Review
- Passing TOEFL Scores
- Passing Test Scores (TASP/THEA, SAT, or ACT)
- Verification of Work Authorization Status

Field Experience Options

Classroom Support: Our experienced field supervisors will observe you during your field experience and give you constructive feedback.



- During the one-year teaching internship, WCACP will recommend a certificate that will run for 12 months. The certificate enables you to be considered the “teacher of record,” with all rights, privileges, and responsibilities of any other first year teacher in Texas.

Option 2: Clinical Teaching

- With this route, WCACP handles the set-up process to obtain your clinical teaching placement. Every effort will be made to obtain a placement in your desired certification area, grade level, and school.
- This route to certification is a 70 days unpaid assignment in the classroom of a certified teacher. The clinical teaching assignment will consist of gradually taking on the responsibilities of the classroom teacher.
- Your clinical teaching assignment can be completed at any school district, TEA recognized private school, or charter school in the state of Texas. The assignment must be completed in the grade level and subject area of the TExES certification exam you have passed.

Web-Centric ACP has a state-wide candidate search database that districts regularly use to locate highly qualified teachers. Once you pass your content exam, your name will be entered in the database.

Web-Centric ACP’s goal is to help you reach your goal of becoming a certified teacher in the state of Texas, and also to help school districts locate and hire highly qualified teachers.

Field experience is a critical time in your certification journey. It will be challenging, exciting, and rewarding for you and everyone involved.

Web-Centric offers you two options to meet your certification goal.

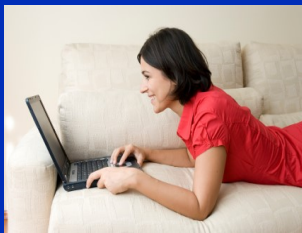
Option 1: Internship

- With this route, you must obtain a full-time teaching position at a school district, TEA recognized private school, charter school, or Head Start in Texas. WCACP will help ensure you are prepared to interview with school officials.
- An internship is a one year (two semesters) assignment you will complete at a school. The one-year teaching internship must be in your certification area. During your one-year internship, you will receive salary and benefits commensurate of a first year teacher. Paraprofessional, substitute, or volunteer positions do not count toward an internship.



“I like a teacher who gives you something to take home to think about besides homework.”
Lily Tomlin

Web-Centric ACP:
Your Best Way to
Become a Certified
Teacher



Assignments

Web-Centric ACP candidates must hold a bachelors degree, and many of our students have earned a masters degree or PhD. Quality work is expected, just as you will expect quality work from your students. Any work not meeting the standards will be returned, and the student will need to re-submit it. Our instructors are certified teachers in the state of Texas, and look forward to working with you as you work toward your certification goal. Assignments will be graded within two to three days.

Observation Hours

Interesting, student-centered classroom videos

The state of Texas requires at least 30 hours of classroom observation hours prior to starting your field experience. Web-Centric ACP allows you to complete up to 15 of those hours virtually by watching approved videos. You will learn successful instructional strategies and classroom management techniques.

Program Overview

Web-Centric ACP is a state-approved alternative certification program that is based on distance learning. Successful candidates are recommended for their Standard teaching certificate in the state of Texas.

Successful completion of the Web-Centric ACP program includes:

1. Complete pre-service experience state/program requirements (TExES Content Exam, PPR test, curriculum, observations, etc.)
2. Successfully complete approved field experience assignment—internship or clinical teaching.
3. Complete program/state requirements for recommendation of standard teaching certificate (PPR exam, mentor assignments, etc.)

Once you successfully complete the requirements above, you will hold a Standard teaching certificate in the state of Texas.

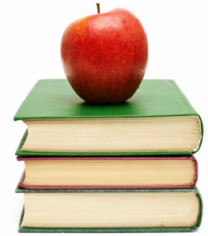
Your Library

We recommend that you start building your library so you will have great resources for you and your students. Throughout the coursework and online chats, you will learn about great websites, software, and books you can use in your classroom.

It is never too early to start doing research online and finding resources to make your classroom an engaging, student-centered environment.

Accommodations

ETS, the testing company that administers the TExES exams, will provide certain accommodations. For more information, visit the [ETS](#) website.





* CONTINUOUS
CALENDAR
ENROLLMENT

* GAIN ACCESS TO
COURSEWORK
UPON ENTERING
THE PROGRAM

* COMPLETE
REQUIREMENTS
FROM THE
COMFORT OF
YOUR HOME

Timeline

You have up to three years to complete your certification requirements, including the field experience.

You must complete all requirements prior to finishing your field experience assignment in order to earn your Standard Certificate. The following time-line demonstrates how candidates progress through the program.

Please note that this is an ideal example, and individual candidates may have unique circumstances preventing them from completing the requirements in this order.

- 1. Apply:** Submit your online application and all admission requirements.
- 2. Check Status:** Monitor your status in the My WCACP portal to ensure you submit all required documents.
- 3. Acceptance:** Upon entering the program, you must pay your curriculum access fee. You will receive your acceptance letter, and will gain access to the online modules and information on completing active in-class and virtual observations. A Program Specialist will guide you through each step.

4. Instructional Courses: Next, you will work on your modules (instructional courses) and begin preparing for your TExES content exam and PPR test.

5. Certification Exam(s): After you pass your TExES content exam (certification exam), you will receive your statement of eligibility, which districts look for when they hire candidates.

6. Remaining Curriculum Requirements: You will complete remaining curriculum requirements and look for a teaching job (internship) or do clinical teaching.

7. Field Experience: At this point you either secure a one year teaching job (internship), or sign up for clinical teaching and Web-Centric ACP will look for a placement for you. When you are hired, you are issued a one year Certificate. All candidates (interns and clinical teachers) are observed by a field supervisor. A payment plan must be implemented before beginning your field experience assignment.

Timeline Continued



8. Recommendation for Certification: You will be recommended for your Standard Certificate in the state of Texas after completing the following requirements:

- Complete fingerprinting requirement
- Complete all coursework, online classes and observation hours
- Pass the required certification exams and PPR test
- Complete blogging and mentor activities
- Complete your field experience assignment successfully and receive a recommendation from your field supervisor and campus administrator
- Pay all program fees

Did You Know?

- Web-Centric ACP does not charge an application fee! Most programs charge a non-refundable \$50 application fee.
- You can defer 90% of the cost of the program until you start your field experience assignment.
- Special Offer: Start the program for only \$195 upfront. Check out our [special offer page](#) for more details.
- Web-Centric ACP provides excellent customer service. Our friendly staff will help you each step of the way.

Certification Exams



Most TExES exams are offered regularly as computer administered tests. Some TExES exams are only offered in testing windows, but are also computer based exams. Paper based tests are no longer offered.

The State Board for Educator Certification requires that each candidate for teacher certification pass the TExES content exam and PPR exam.

Special Education, Bilingual Education, and ESL teachers must pass additional exams (see information below).

After you pass your content exam, you are eligible (highly qualified) for a teaching job. Once you pass your content test, WCACP will issue you your state-ment of eligibility, which districts look for when they hire teachers.

Additional Exams:

- Special Education candidates must pass a Generalist exam and the Special Education exam.
- Bilingual candidates must pass a Generalist test, the Bilingual Education Supplemental, and the BTLPT exam.
- ESL candidates must pass a Generalist test and the ESL Supplemental exam.

Study Material:

You should carefully review the ETS preparation manual. Our staff will help you prepare for your TExES Content Exam. Study material is provided.

Pedagogy and Professional Responsibilities (PPR) Exam:

Once you complete the Pre-Service class, we will approve you to take the PPR. Everyone is required to pass the PPR.

Clinical teachers takes the PPR before assignments begins.

It is your advantage to have your PPR test passed prior to your one-year internship.

Program Cost



Defer up to 90% of the costs until you start teaching

Special Offer: Start the program for **only \$195 upfront**. No other payment is required until you are hired or sign up for clinical teaching. (Flexible payment options available at that time)

Curriculum Access Fee: \$195

(Your only upfront fee – you can defer the rest of the fees until you are hired or start clinical teaching)

Tuition Fee: \$2,000

Field Experience Fee: \$2,100

Total Program Cost: \$4,295

Fees Paid to Other Agencies—[Get Info](#)

Application Fee: FREE

Textbooks, TExES Study Material, and Practice Exams: FREE

Special Offers

Start the program for \$195!

Submit an online application and start the program for only \$195. Don't delay! The teacher hiring season is in full swing and will continue throughout the 2019/2020 school year.



***Pay in full special offer once accepted to program**



Option #1

Tuition PIF - \$2,000

- \$200 instant discount
- Reimbursed \$116 test fee (content exam voucher)
- Reimbursed \$52 fingerprinting fee
- **\$368 total savings!**



Option #2

Field Experience PIF - \$2,100

- \$210 instant discount
- Reimbursed \$116 test fee (PPR exam voucher)
- Reimbursed Standard Certificate Fee (\$78)
- **\$404 total savings!**



Option #3

Tuition and Field Experience PIF \$4,100

- \$410 instant discount
- Reimbursed \$116 test fee (content exam voucher)
- Reimbursed \$116 test fee (PPR exam voucher)
- Reimbursed \$52 fingerprinting fee
- Reimbursed Standard Certificate Fee (\$78)
- **\$772 total savings!**

*PIF special offer cannot be combined with other program discounts
Flexible payment options are also available once an internship or CT assignment is started, but PIF discounts won't apply

Certification Areas



Grades EC-6

Core Subjects EC-6

The Core Subjects EC-6 certification area allows you to teach English, math, science, social studies, music, art, health and physical education at the elementary level, Early Childhood through 6th grade.

Requirements for Admission: Minimum of 15 semester hours of college coursework (6 hours of English, 3 hours of math, 3 hours of science, and 3 hours of social studies)

Grades 4-8

Core Subjects 4-8

The Core Subjects 4-8 certification area allows you to teach any one or a combination of English, math, science and/or social studies classes at the middle school level, 4th grade through 8th grade.

Requirements for Admission: Minimum of 15 semester hours of college coursework (6 hours of English, 3 hours of math, 3 hours of science, and 3 hours of social studies)

Science 4-8

The Science 4-8 certification area allows you to teach science classes, 4th grade through 8th grade.

Requirements for Admission: Passing score on Science 4-8 (116) TExES content exam

Mathematics 4-8

The Mathematics 4-8 certification area allows you to teach math classes, 4th grade through 8th grade.

Requirements for Admission: Minimum of 15 semester hours of math college coursework

English Language Arts & Reading 4-8

The English Language Arts and Reading 4-8 certification area allows you to teach English classes, 4th grade through 8th grade.

Requirements for Admission: Minimum of 15 semester hours of English college coursework

Social Studies 4-8

The Social Studies 4-8 certification area allows you to teach studies classes, 4th grade through 8th grade.

Requirements for Admission: Passing score on Social Studies 4-8 (118) TExES content exam

English Language Arts & Reading/Social Studies 4-8

The English Language Arts & Reading/Social Studies 4-8 certification area allows you to teach English and social studies classes, 4th grade through 8th grade.

Requirements for Admission: Individuals applying for the ELAR/SS 4-8 certification area should have a minimum of 24 semester hours of English/Social Studies college coursework. A minimum of 12 hours of English and 12 hours of Social Studies is required.

WCACP staff will look at your transcripts once all your admission paperwork is received. The no obligation review is completed on your behalf. Feedback can be given at that time to help you understand what certification options you have with the program

Mathematics/Science 4-8

The Mathematics/Science 4-8 certification area allows you to teach math and science classes, 4th grade through 8th grade.

Requirements for Admission: Minimum of 15 semester hours of math/science college coursework

Certification Areas

Grades 6-12

Business and Finance 6-12

The Business and Finance 6-12 certification area allows you to teach business and finance at the middle through high school level, 6th grade through 12th grade.

Requirements for Admission: Passing score on Business and Finance 6-12 (276) TExES content exam

Physical Science 6-12

The Physical Science 6-12 certification area allows you to teach physical science courses in 6th grade through 12th grade.

Requirements for Admission: Minimum of 15 semester hours of college coursework in science related courses

Grades 7-12

Speech 7-12

The Speech 7-12 certification area allows you to teach speech communications courses in 7th grade through 12th grade.

Requirements for Admission: Passing score on Speech 7-12 (129) TExES content exam

English Language Arts and Reading 7-12

The English Language Arts and Reading 7-12 certification area allows you to teach English and reading courses in 7th grade through 12th grade.

Requirements for Admission: Minimum of 24 semester hours of college coursework in English related courses (this can include communication classes)

Life Science 7-12

The Life Science 7-12 certification area allows you to teach life science courses in 7th grade through 12th grade.

Requirements for Admission: Minimum of 15 semester hours of college coursework in biology related courses

Mathematics 7-12

The Mathematics 7-12 certification area allows you to teach mathematics courses in 7th grade through 12th grade.

Requirements for Admission: Minimum of 15 semester hours of college coursework in math related courses

Science 7-12

The Science 7-12 certification area allows you to teach science courses in 7th grade through 12th grade.

Requirements for Admission: Minimum of 15 semester hours of college coursework in science related courses (i.e., biology, chemistry, physics, or related science courses)

Social Studies 7-12

The Social Studies 7-12 certification area allows you to teach social studies courses in 7th grade through 12th grade.

Requirements for Admission: Minimum of 24 Semester hours of college coursework in social studies related courses (i.e., history, geography, economics, government, or political science classes)

History 7-12

The History 7-12 certification area allows you to teach history courses in 7th grade through 12th grade.

Requirements for Admission: History degree or passing score on History 7-12 (233) TExES content exam.

Certification Areas

ABOUT US

Web-Centric ACP is a state-approved educational entity created by educators with over 60 years of combined experience in Texas schools.

Candidates enrolled in the program can teach in any of the 20 regions in Texas during their internship or clinical teaching assignment.

Grades EC-12

Art EC-12

The Art EC-12 certification area allows you to teach art at the elementary school through high school levels, early childhood through twelfth grade.

Requirements for Admission: Minimum of 15 semester hours of college coursework in art related courses.

Special Education EC-12

The Special Education EC-12 certification area allows you to teach English resource, math resource, science resource, social studies resource, content mastery, inclusion or life skills at the elementary through high school level, Early Childhood through 12th grade.

Requirements for Admission: Minimum of 15 semester hours of college coursework (6 hours of English, 3 hours of math, 3 hours of science, and 3 hours of social studies)

Certification Areas

Grades EC-12

Physical Education EC-12

The Physical Education EC-12 certification area allows you to teach physical education at the elementary through high school level, Early Childhood through 12th grade.

Requirements for Admission: Minimum of 15 semester hours of college coursework in kinesiology or sports related courses

Health EC-12

The Health EC-12 certification area allows you to teach health at the elementary through high school level, Early Childhood through 12th grade.

Requirements for Admission: Passing score on Health EC-12 (157) TExES content exam

Music EC-12

The Music EC-12 certification area allows you to teach music at the elementary through high school level, Early Childhood through 12th grade.

Requirements for Admission: Minimum of 15 semester hours of college coursework in music related courses

LOTE Spanish EC-12

The LOTE Spanish EC-12 certification area allows you to teach Spanish at the elementary through high school level, Early Childhood through 12th grade.

Requirements for Admission: Passing score on LOTE-Spanish (613) TExES content exam

Supplemental Areas

EC-12 ESL Supplemental

EC-12 Gifted & Talented Supplemental
EC-12 Bilingual Supplemental

The main hiring seasons are May-August and December-January, but teachers are hired year round.

Apply online today at
www.ertools4education.com

Apply Today!

