



Basel 4

A brief overview

November 2018

kpmg.com/Basel4



Introduction

Basel 4 was (almost completely) finalised by the Basel Committee in December 2017, and is due to be implemented from January 2022.

The December 2017 agreement included substantial amendments to the capital treatment of credit risk, operational risk and the credit valuation adjustment, the imposition of an output floor, revisions to the definition of the leverage ratio and the application of the leverage ratio to global systemically important banks. A revised market risk framework had already been largely finalised in January 2016.

In the EU the full implementation of Basel 4 will require not only finalisation of the CRR2/CRD5 package (covering mostly the revised market risk framework) but also the introduction of a CRR3/CRD6 package for the other elements of Basel 4.

The EU has already implemented Basel 3 through the Capital Requirements Regulation (CRR) and the revised Capital Requirements Directive (CRD4). These covered the quantity and quality of capital that banks should hold, the introduction of a minimum leverage ratio, two new minimum liquidity ratios (the LCR and the NSFR), a tougher capital treatment of securitisations, and the use of the counter cyclical capital buffer as a macro-prudential tool.

We present here a primer for Basel 4, highlighting its main components, their potential impact on major EU banks and the actions that banks should be taking to implement these changes and to mitigate (where possible) their impact.



Credit risk

Key elements of new standards:

- Standardised approach more granular and risk sensitive
- Removing the option to use advanced IRB for institutions and large corporates, and any IRB approach for equity
- Restrictions on model parameters (input floors)

Implementation date¹: 1/1/2022

Impact on capital requirements:

Higher capital requirements - in particular on higher risk exposures, income producing real estate, and where IRB no longer available

CET1 capital ratio impact²:

4.5 percent reduction (4.7 percent for EU G-SIBs)

Other impacts:

- Pricing of long term credit exposures
- Systems and data
- Read-across to counterparty credit risk

Potential mitigating actions:

- Asset allocation
- Use of remaining modelling opportunities

More to come?

- CRR3
- Use of national discretions
- Impact of TRIM
- Sovereign exposures

KPMG Basel 4 series papers:

[*Credit Risk - the Standardised approach, April 2018*](#)

[*Credit Risk - IRB approach, April 2018*](#)



Market risk

Key elements of new standards:

- Stricter border between Trading and Banking books
- More risk-sensitive Standardised Approach (SA)
- Revised Internal/Advanced Model Approach (IMA)
- Replacement in IMA of VaR measure by the expected shortfall measure

Implementation date¹: 1/1/2022

Impact on capital requirements:

Higher capital requirements, most pronounced under the revised standardised approach

CET1 capital ratio impact²:

2.3 percent reduction (3.4 percent for EU G-SIBs)

Other impacts:

Systems and data

Potential mitigating actions:

- Data cleansing and alignment
- Enhance model governance and understand modelling differences
- Assess regulatory and other programme overlaps for efficiencies
- Develop roadmaps for implementation and operating model
- Standardise modelling capabilities
- Build out secondary considerations and effects, such as capital allocation

More to come?

- Finalisation of BCBS market risk standards
- Finalisation of CRR2
- Impact of TRIM

KPMG Basel 4 series papers:

[*Market Risk, March 2018*](#)



Credit valuation adjustment

Key elements of new standards:

- New basic approach (BA-CVA) and new standardised approach (SA-CVA) for CVA risks in derivatives and securities financing transactions
- Enhance risk sensitivity, improve robustness and greater consistency with market risk framework

Implementation date¹: 1/1/2022

Impact on capital requirements:

Higher capital requirements, mostly from removal of more advanced modelling approaches

CET1 capital ratio impact²:

3.8 percent reduction (5.4 percent for EU G-SIBs)

Other impacts:

Systems and data

Potential mitigating actions:

- Choice of counterparty
- Business model and product mix
- Meet requirements to use the SA-CVA approach

More to come?

CRR 3

KPMG Basel 4 series papers:

[*CVA Risk, March 2018*](#)



Operational risk

Key elements of new standards:

- Withdrawing the use of internal model-based approaches
- Single Standardised Measurement Approach (SMA)
- Business indicators, increasing marginal coefficients, internal loss multiplier

Implementation date¹: 1/1/2022

Impact on capital requirements:

Higher capital requirements – in particular for larger banks, banks with high historic operating losses, and banks moving from the AMA

CET1 capital ratio impact²:

6.4 percent reduction (7.5 percent for EU G-SIBs)

Other impacts:

- Systems and data – in particular to meet the ten year loss data capture requirement.
- Reduced risk sensitivity and quality of risk management, compared with current more advanced approaches

Potential mitigating actions:

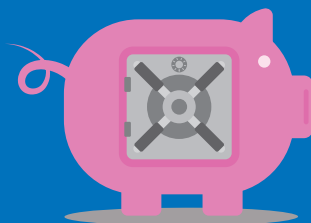
- Greater focus on reducing operational losses
- Change balance across business lines
- Reduce overall size of bank

More to come?

- CRR3
- Use of national discretions

KPMG Basel 4 series papers:

[Operational Risk, February 2018](#)



Output floor

Key elements of new standards:

- Floor to constrain the extent to which banks can use internal models to drive down their capital requirements for credit and market risk
- Calibrated to 72.5% of RWAs under Standardised approaches

Implementation date¹:

Phased in from 1/1/2022 to 1/1/2027

Impact on capital requirements:

Higher capital requirements, with most pronounced impact from 2025 onwards

CET1 capital ratio impact²:

6.5 percent reduction (5.4 percent for EU G-SIBs)

Other impacts:

Systems and data - ability to calculate floor using Standardised approaches

More to come?

- CRR3

KPMG Basel 4 series papers:

[Piecing the jigsaw together, May 2018](#)



Leverage ratio

Key elements of new standards:

- Revised exposure definition (derivatives, some off-balance sheet items and holdings of reserves at central banks)
- G-SIB leverage ratio buffer (set at half of a G-SIB's capital ratio buffer)

Implementation date¹:

- Current definition from 1/1/18
- Revised definition and G-SIB buffer 1/1/2022

Impact on capital requirements:

Lower capital requirements – definition changes generally increase measured leverage ratios, and more than offset the impact of the G-SIB buffer

Leverage ratio impact:

1.0 percent increase (4.3 percent for EU G-SIBs)

Other impacts:

Leverage ratio becomes binding constraint for fewer banks

Potential mitigating actions:

Reduce balance sheet size

Notes:

1. Implementation date is in Basel standards; EU implementation may be later.
2. EBA estimate of average percentage impact on the CET1 capital ratios of large internationally active EU banks



Overall impact

Impact on capital requirements:

Higher capital requirements

CET1 capital ratio impact²:

18.7 percent reduction (25.4 percent for EU G-SIBs)

Other impacts:

- Business model
- Systems and data
- Risk management
- Impact analysis
- Implementation projects

Potential mitigating actions:

- Adjust product mix
- Reduce risk weighted exposures
- Issue or retain CET1 capital

Pillar 2 offset:

Possible reductions in Pillar 2 capital add-ons to reflect improved and less model-based Pillar 1 requirements?

Other impacts:

- Higher RWAs drive higher Pillar 2 and TLAC/MREL requirements (where these are specified as a percentage of total RWAs)
- Impact on profitability

More to come?

- CRR3
- BRRD2
- Setting of bank-specific MREL requirements

KPMG Basel 4 series papers:

[*Piecing the jigsaw together, May 2018*](#)

[*Impact of Basel 4 on EU banks, October 2018*](#)

Contact us:

Rob Smith

Partner, KPMG in the UK
Co-head KPMG Risk and Regulatory Insight Centre
E: robert.smith@kpmg.co.uk

Steven Hall

Partner, KPMG in the UK
E: steven.hall@kpmg.co.uk

Clive Briault

Senior Advisor, KPMG in the UK
E: clive.briault@kpmg.co.uk

For more regulatory insights from KPMG's EMA
Risk and Regulatory Insight Centre please visit:
www.kpmg.com/regulatorychallenges

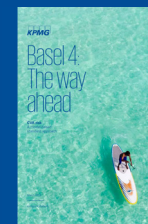
Additional thought leadership collateral:



Operational risk



Market risk



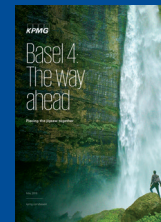
CVA risk



Credit risk



Credit risk - IRB
approach



Piecing the
jigsaw together

kpmg.com/Basel4

The information contained herein is of a general nature and is not intended to address the circumstances of any particular individual or entity. Although we endeavour to provide accurate and timely information, there can be no guarantee that such information is accurate as of the date it is received or that it will continue to be accurate in the future. No one should act on such information without appropriate professional advice after a thorough examination of the particular situation.

© 2018 KPMG International Cooperative ("KPMG International"), a Swiss entity. Member firms of the KPMG network of independent firms are affiliated with KPMG International. KPMG International provides no client services. No member firm has any authority to obligate or bind KPMG International or any other member firm vis-à-vis third parties, nor does KPMG International have any such authority to obligate or bind any member firm. All rights reserved.

The KPMG name and logo are registered trademarks or trademarks of KPMG International.

CREATE. | CRT105608 | November 2018