

# Price History

## Tables and Charts

**USA**

**China**

**Western Europe**

**World Export**

Hot-rolled Band

Cold-rolled Coil

Standard Plate

Rebar

Steel Scrap

Register at: [www.steelbenchmark.com](http://www.steelbenchmark.com)



## USA Downward Trend Intensifies

Western Europe and China up 2.9% and 0.8%; USA and World Export down 2.4%, and 9.5%.

### *SteelBenchmarker*<sup>TM</sup> Report #377

ENGLEWOOD CLIFFS, NJ – The bi-monthly *SteelBenchmarker*<sup>TM</sup> Western European HRB price for December 29<sup>th</sup> was up (on a Euro basis, it was also up €25) to \$1,045 after falling for eight consecutive times. The Chinese HRB price was up for the second time at \$639 per tonne. The World Export HRB price went down to \$800 per tonne a third consecutive time. The United States HRB price was down for the fifth time to \$1,763 per tonne.

In its three hundred seventy-seventh report, the *SteelBenchmarker*<sup>TM</sup> released 10 steel products and 3 USA scrap prices. Of these, here are four benchmark prices for hot-rolled band December 29, 2021:

**USA** – \$1,763 per metric tonne (\$1,599 per net ton), FOB the mill – down \$184 from \$1,947 (\$1,767 nt) two weeks ago, up \$1,351 from the recent low of \$412 (\$374 nt) on Dec. 14, 2015 and up \$1,334 from the low of \$429 per tonne (\$390 nt) on May 25, 2009. It is up \$757 per tonne from the recent high of \$1,006 (\$912 nt) on Jul. 11, 2018 and up \$560 (46.6%) from the record peak of \$1,203 per tonne (\$1,091 nt) on July 28, 2008.

**China** – \$639 per metric tonne, ex-works – up \$5 from \$634 two weeks ago, up \$408 per tonne from the recent low of \$231 on Dec. 14, 2015 and up \$232 per tonne from the low of \$407 per tonne on Oct. 12, 2009. It is up \$2 per tonne from the recent high of \$637 on Aug. 22, 2011 and down \$94 (12.8%) from the record peak of \$733 per tonne on July 14, 2008.

**Western Europe** - \$1,045 (€923) per metric tonne, ex-works – up \$29 (up €25) from \$1,016 (€898) two weeks ago, up \$699 (up €598) from the recent low of \$346 (€325) on Nov. 23, 2015 and up \$474 (up €542) from the low of \$571 (€381) per tonne on Nov. 23, 2009. It is up \$159 (up €167) per tonne from the recent high of \$852 (€605) on Mar. 28, 2011 and down \$159 (13.1%) (up €167) (22.1%) from the record peak of \$1,204 (€756) per tonne on July 14, 2008.

**World Export Price** – \$800 per metric tonne, FOB the port of export – down \$20 from \$820 compared to two weeks ago, up \$528 per tonne from the recent low of \$272 on Feb. 8, 2016 and up \$304 from the low of \$496 per tonne on Nov. 9, 2009. It is up \$27 per tonne from the recent high of \$773 on Feb 14, 2011 and down \$313 (28.1%) from the record peak of \$1,113 per tonne on July 28, 2008.



## STEELBENCHMARKER PRICES

December 27, 2021

dollars per metric tonne  
(net ton) [gross ton] {Euros }

### Region: USA, East of the Mississippi

Hot-rolled band:	1,763	(1,599)
Cold-rolled coil:	2,130	(1,932)
Rebar:	1,330	(1,207)
Standard plate:	2,025	(1,837)
#1 Heavy melting scrap:	458	[465]
Shredded scrap*:	518	[526]
#1 Busheling scrap:	595	[605]

### Region: Mainland China\*\*\*

Hot-rolled band:	639
Cold-rolled coil:	746
Rebar:	632
Standard plate:	678

### Region: Western Europe

Hot-rolled band:	1,045	{923e}
------------------	-------	--------

### Region: World Export Market

Hot-rolled band:	800
------------------	-----

#### NOTES:

Released December 29, 2021 at 9:00 a.m. to Price Assessment Providers.  
The first price release was for April 10, 2006.

If a product is not listed or a price is not indicated, fewer than ten (10) price inputs were received at this time. \*\* Development stage -- fewer than 20 assessment providers.

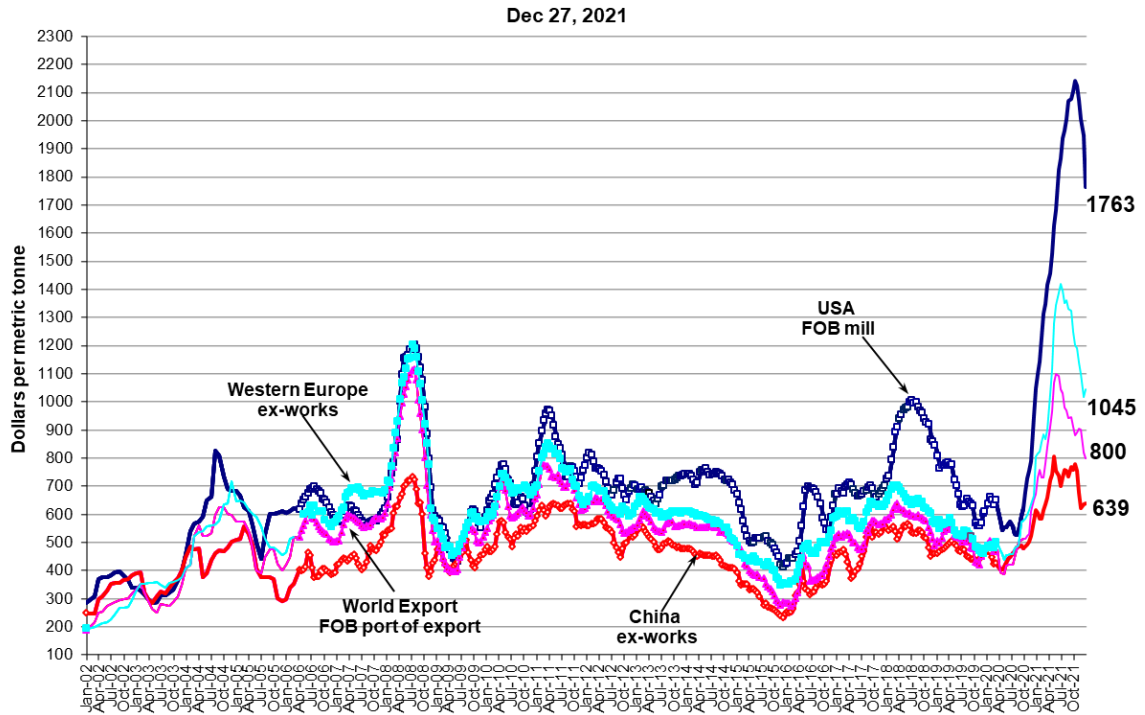
Prices are: USA -- FOB mill; Western Europe and China -- Ex-works; and World Export Market - - FOB port of export. For USA steel scrap -- delivered to the steel plant. \* For shredded scrap the region is "for all but the West Coast" (CA, OR & WA).

\*\*\* SteelHome's non-steelbenchmarker derived average price for each product is the determinant of the Chinese ex-works benchmark price. It is published for comparative purposes.

For product specifications go to [www.steelbenchmarker.com/specifications](http://www.steelbenchmarker.com/specifications).

## SteelBenchmarker™ HRB Price

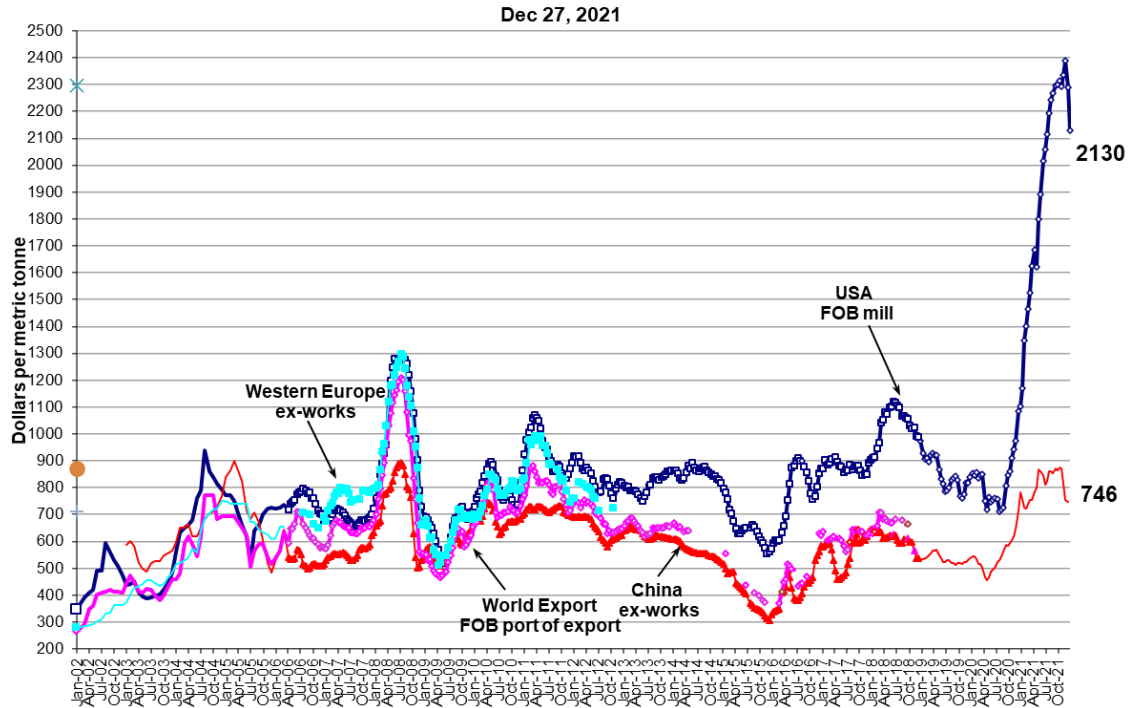
USA, China, Western Europe and World Export  
 (WSD's PriceTrack data, Jan. 2002 - March 2006; SteelBenchmarker data begins April 2006)



## SteelBenchmarker™ CRC Price

### USA, China, Western Europe and World Export

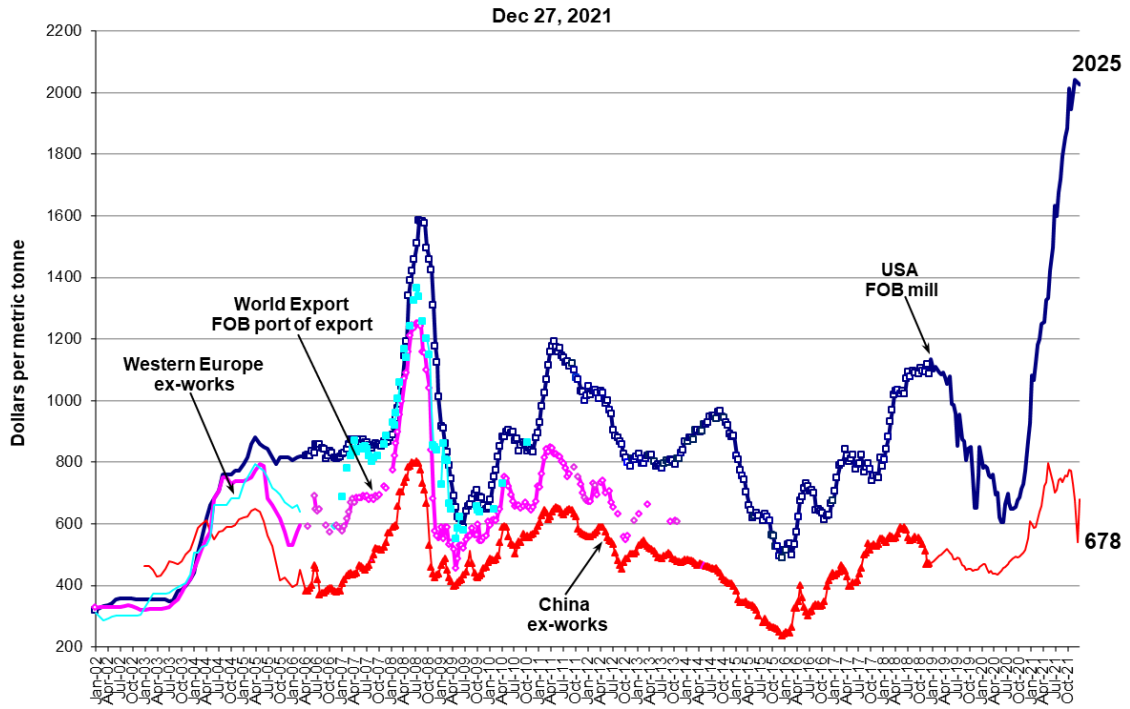
(WSD's PriceTrack data, Jan. 2002 - March 2006; SteelBenchmarker data begins April 2006)



## SteelBenchmarker™ Plate Price

### USA, China, Western Europe and World Export

(WSD's PriceTrack data, Jan. 2002 - March 2006; SteelBenchmarker data begins April 2006)

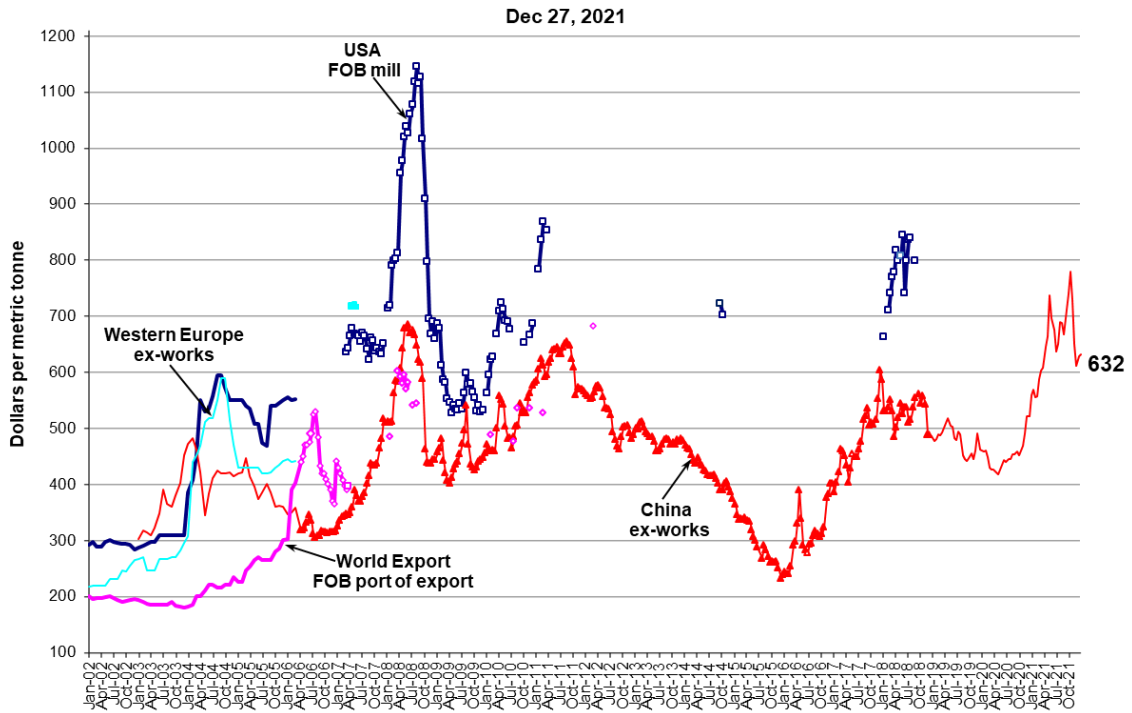




### SteelBenchmarker™ Rebar Price

#### USA, China, Western Europe and World Export

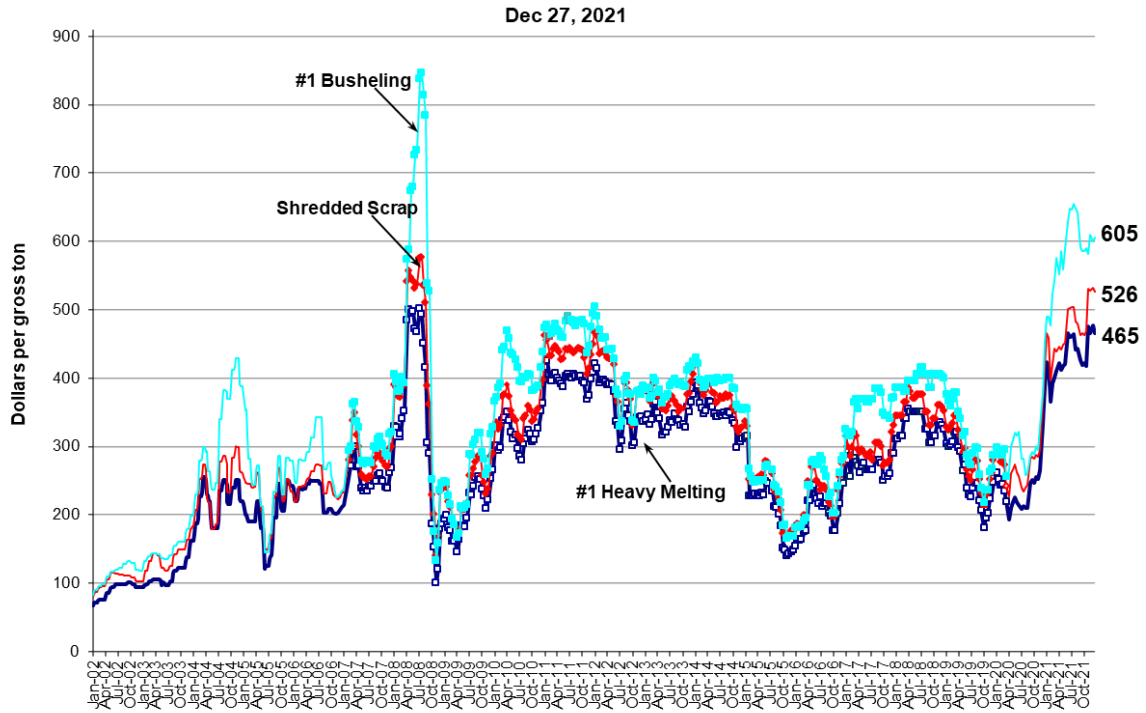
(WSD's PriceTrack data, Jan. 2002 - March 2006; SteelBenchmarker data begins April 2006)



## SteelBenchmarker™ Scrap Price

USA, delivered to steel plant

(AMM scrap price data, Jan. 2002 - Jan. 2007; SteelBenchmarker data begins Feb. 2007)





**USA**  
**FOB mill\***  
*Dollars per Net Ton*

	-----HRB-----			-----CRC-----			-----Plate-----			-----Rebar-----		
	<u>Price</u>	<u>Dir</u> <u>Chng</u>	<u>Pct</u> <u>Chng</u>	<u>Price</u>	<u>Dir</u> <u>Chng</u>	<u>Pct</u> <u>Chng</u>	<u>Price</u>	<u>Dir</u> <u>Chng</u>	<u>Pct</u> <u>Chng</u>	<u>Price</u>	<u>Dir</u> <u>Chng</u>	<u>Pct</u> <u>Chng</u>
27-Jul-20	481	-24	-4.7%	644	-43	-6.2%	603	-30	-4.7%	na	-	-
10-Aug-20	476	-5	-0.9%	650	5	0.8%	589	-15	-2.4%	na	-	-
24-Aug-20	488	12	2.5%	658	8	1.3%	588	-1	-0.2%	na	-	-
14-Sep-20	540	52	10.6%	733	75	11.4%	594	6	1.1%	na	-	-
28-Sep-20	564	24	4.5%	767	34	4.6%	612	18	3.1%	na	-	-
12-Oct-20	616	52	9.2%	779	13	1.7%	622	10	1.6%	na	-	-
26-Oct-20	660	44	7.1%	826	47	6.1%	647	24	3.9%	na	-	-
09-Nov-20	686	26	4.0%	855	28	3.4%	660	13	2.0%	na	-	-
23-Nov-20	716	30	4.4%	883	28	3.3%	701	42	6.3%	na	-	-
14-Dec-20	859	143	20.0%	984	102	11.5%	787	86	12.3%	na	-	-
28-Dec-20	951	92	10.7%	999	15	1.5%	840	53	6.7%	na	-	-
11-Jan-21	995	44	4.7%	1061	62	6.2%	980	140	16.6%	na	-	-
25-Jan-21	1037	42	4.2%	1222	161	15.2%	967	-13	-1.3%	na	-	-
08-Feb-21	1115	78	7.5%	1270	48	3.9%	1018	51	5.3%	na	-	-
22-Feb-21	1191	76	6.8%	1328	58	4.6%	1071	54	5.3%	na	-	-
08-Mar-21	1223	32	2.7%	1383	55	4.2%	1089	17	1.6%	na	-	-
22-Mar-21	1285	63	5.1%	1473	90	6.5%	1132	44	4.0%	na	-	-
12-Apr-21	1320	34	2.7%	1527	54	3.6%	1138	5	0.5%	na	-	-
26-Apr-21	1383	63	4.7%	1471	-55	-3.6%	1202	64	5.7%	na	-	-
10-May-21	1476	93	6.8%	1632	161	10.9%	1209	7	0.6%	na	-	-
24-May-21	1524	48	3.3%	1715	83	5.1%	1289	80	6.6%	na	-	-
14-Jun-21	1655	131	8.6%	1827	112	6.6%	1356	67	5.2%	na	-	-
28-Jun-21	1691	36	2.2%	1866	39	2.1%	1481	125	9.2%	na	-	-
12-Jul-21	1758	67	4.0%	1917	51	2.7%	1451	-31	-2.1%	na	-	-
26-Jul-21	1784	25	1.4%	1989	73	3.8%	1520	70	4.8%	na	-	-
09-Aug-21	1819	35	2.0%	2033	44	2.2%	1559	39	2.6%	na	-	-
23-Aug-21	1877	58	3.2%	2056	23	1.1%	1627	67	4.3%	na	-	-
13-Sep-21	1885	8	0.4%	2082	26	1.3%	1684	57	3.5%	na	-	-
27-Sep-21	1910	24	1.3%	2085	3	0.1%	1707	24	1.4%	na	-	-
11-Oct-21	1944	34	1.8%	2097	13	0.6%	1826	119	7.0%	na	-	-
25-Oct-21	1927	-17	-0.9%	2080	-17	-0.8%	1765	-61	-3.3%	na	-	-
08-Nov-21	1880	-47	-2.4%	2118	38	1.8%	1806	41	2.3%	na	-	-
22-Nov-21	1820	-60	-3.2%	2168	50	2.4%	1852	46	2.6%	na	-	-
13-Dec-21	1766	-54	-2.9%	2077	-91	-4.2%	1844	-8	-0.4%	na	-	-
27-Dec-21	1599	-167	-9.5%	1932	-145	-7.0%	1837	-7	-0.4%	1207	0	0.0%

Notes: \* Ex-works (the same as FOB mill)

Prices released on Wednesdays following the 2nd and 4th Mondays of the month at 9:00 AM to Price Assessment Providers. If a price is not indicated, fewer than ten (10) price inputs were received at that time. The first price release was for April 10, 2006 for data go to [steelbenchmarker.com/files/history2.pdf](http://steelbenchmarker.com/files/history2.pdf).

For product specifications refer to last page, or go to [steelbenchmarker.com/specifications](http://steelbenchmarker.com/specifications).

## USA

FOB mill\*

Dollars per Metric Tonne

	-----HRB-----			-----CRC-----			-----Plate-----			-----Rebar-----		
	<u>Price</u>	<u>Dlr</u> <u>Chng</u>	<u>Pct</u> <u>Chng</u>	<u>Price</u>	<u>Dlr</u> <u>Chng</u>	<u>Pct</u> <u>Chng</u>	<u>Price</u>	<u>Dlr</u> <u>Chng</u>	<u>Pct</u> <u>Chng</u>	<u>Price</u>	<u>Dlr</u> <u>Chng</u>	<u>Pct</u> <u>Chng</u>
27-Jul-20	530	-26	-4.7%	710	-47	-6.2%	665	-33	-4.7%	na	-	-
10-Aug-20	525	-5	-0.9%	716	6	0.8%	649	-16	-2.4%	na	-	-
24-Aug-20	538	13	2.5%	725	9	1.3%	648	-1	-0.2%	na	-	-
14-Sep-20	595	57	10.6%	808	83	11.4%	655	7	1.1%	na	-	-
28-Sep-20	622	27	4.5%	845	37	4.6%	675	20	3.1%	na	-	-
12-Oct-20	679	57	9.2%	859	14	1.7%	686	11	1.6%	na	-	-
26-Oct-20	727	48	7.1%	911	52	6.1%	713	27	3.9%	na	-	-
09-Nov-20	756	29	4.0%	942	31	3.4%	727	14	2.0%	na	-	-
23-Nov-20	789	33	4.4%	973	31	3.3%	773	46	6.3%	na	-	-
14-Dec-20	947	158	20.0%	1085	112	11.5%	868	95	12.3%	na	-	-
28-Dec-20	1048	101	10.7%	1101	16	1.5%	926	58	6.7%	na	-	-
11-Jan-21	1097	49	4.7%	1169	68	6.2%	1080	154	16.6%	na	-	-
25-Jan-21	1143	46	4.2%	1347	178	15.2%	1066	-14	-1.3%	na	-	-
08-Feb-21	1229	86	7.5%	1400	53	3.9%	1122	56	5.3%	na	-	-
22-Feb-21	1313	84	6.8%	1464	64	4.6%	1181	59	5.3%	na	-	-
08-Mar-21	1348	35	2.7%	1525	61	4.2%	1200	19	1.6%	na	-	-
22-Mar-21	1417	69	5.1%	1624	99	6.5%	1248	48	4.0%	na	-	-
12-Apr-21	1455	38	2.7%	1683	59	3.6%	1254	6	0.5%	na	-	-
26-Apr-21	1524	69	4.7%	1622	-61	-3.6%	1325	71	5.7%	na	-	-
10-May-21	1627	103	6.8%	1799	177	10.9%	1333	8	0.6%	na	-	-
24-May-21	1680	53	3.3%	1890	91	5.1%	1421	88	6.6%	na	-	-
14-Jun-21	1824	144	8.6%	2014	124	6.6%	1495	74	5.2%	na	-	-
28-Jun-21	1864	40	2.2%	2057	43	2.1%	1633	138	9.2%	na	-	-
12-Jul-21	1938	74	4.0%	2113	56	2.7%	1599	-34	-2.1%	na	-	-
26-Jul-21	1966	28	1.4%	2193	80	3.8%	1676	77	4.8%	na	-	-
09-Aug-21	2005	39	2.0%	2241	48	2.2%	1719	43	2.6%	na	-	-
23-Aug-21	2069	64	3.2%	2266	25	1.1%	1793	74	4.3%	na	-	-
13-Sep-21	2078	9	0.4%	2295	29	1.3%	1856	63	3.5%	na	-	-
27-Sep-21	2105	27	1.3%	2298	3	0.1%	1882	26	1.4%	na	-	-
11-Oct-21	2143	38	1.8%	2312	14	0.6%	2013	131	7.0%	na	-	-
25-Oct-21	2124	-19	-0.9%	2293	-19	-0.8%	1946	-67	-3.3%	na	-	-
08-Nov-21	2072	-52	-2.4%	2335	42	1.8%	1991	45	2.3%	na	-	-
22-Nov-21	2006	-66	-3.2%	2390	55	2.4%	2042	51	2.6%	na	-	-
13-Dec-21	1947	-59	-2.9%	2290	-100	-4.2%	2033	-9	-0.4%	na	-	-
27-Dec-21	1763	-184	-9.5%	2130	-160	-7.0%	2025	-8	-0.4%	1330	0	0.0%

Notes: \* Ex-works (the same as FOB mill)

Prices released on Wednesdays following the 2nd and 4th Mondays of the month at 9:00 AM to Price Assessment Providers. If a price is not indicated, fewer than ten (10) price inputs were received at that time. The first price release was for April 10, 2006 for data go to [steelbenchmarker.com/files/history2.pdf](http://steelbenchmarker.com/files/history2.pdf).

For product specifications refer to last page, or go to [steelbenchmarker.com/specifications](http://steelbenchmarker.com/specifications).

## USA

delivered to steel plant

Dollars per Gross Ton

-----Steel Scrap**-----									
	#1 Heavy Melting			Shredded Scrap			#1 Busheling		
	Price	Dir	Pct	Price	Dir	Pct	Price	Dir	Pct
	Chng	Chng		Chng	Chng		Chng	Chng	
27-Jul-20	212	4	1.9%	233	-6	-2.5%	282	1	0.4%
10-Aug-20	210	-2	-0.9%	240	7	3.0%	257	-25	-8.9%
24-Aug-20	210	0	0.0%	243	3	1.3%	260	3	1.2%
14-Sep-20	246	36	17.1%	282	39	16.0%	286	26	10.0%
28-Sep-20	251	5	2.0%	284	2	0.7%	292	6	2.1%
12-Oct-20	247	-4	-1.6%	282	-2	-0.7%	288	-4	-1.4%
26-Oct-20	255	8	3.2%	287	5	1.8%	300	12	4.2%
09-Nov-20	252	-3	-1.2%	284	-3	-1.0%	294	-6	-2.0%
23-Nov-20	265	13	5.2%	295	11	3.9%	330	36	12.2%
14-Dec-20	332	67	25.3%	367	72	24.4%	378	48	14.5%
28-Dec-20	387	55	16.6%	416	49	13.4%	452	74	19.6%
11-Jan-21	423	36	9.3%	465	49	11.8%	490	38	8.4%
25-Jan-21	417	-6	-1.4%	459	-6	-1.3%	490	0	0.0%
08-Feb-21	365	-52	-12.5%	396	-63	-13.7%	477	-13	-2.7%
22-Feb-21	392	27	7.4%	420	24	6.1%	523	46	9.6%
08-Mar-21	400	8	2.0%	443	23	5.5%	541	18	3.4%
22-Mar-21	410	10	2.5%	438	-5	-1.1%	576	35	6.5%
12-Apr-21	422	12	2.9%	446	8	1.8%	552	-24	-4.2%
26-Apr-21	411	-11	-2.6%	442	-4	-0.9%	585	33	6.0%
10-May-21	417	6	1.5%	449	7	1.6%	558	-27	-4.6%
24-May-21	420	3	0.7%	451	2	0.4%	588	30	5.4%
14-Jun-21	466	46	11.0%	501	50	11.1%	630	42	7.1%
28-Jun-21	460	-6	-1.3%	502	1	0.2%	647	17	2.7%
12-Jul-21	461	1	0.2%	503	1	0.2%	646	-1	-0.2%
26-Jul-21	464	3	0.7%	503	0	0.0%	655	9	1.4%
09-Aug-21	441	-23	-5.0%	482	-21	-4.2%	647	-8	-1.2%
23-Aug-21	443	2	0.5%	480	-2	-0.4%	642	-5	-0.8%
13-Sep-21	426	-17	-3.8%	463	-17	-3.5%	591	-51	-7.9%
27-Sep-21	419	-7	-1.6%	466	3	0.6%	585	-6	-1.0%
11-Oct-21	422	3	0.7%	463	-3	-0.6%	586	1	0.2%
25-Oct-21	418	-4	-0.9%	468	5	1.1%	590	4	0.7%
08-Nov-21	475	57	13.6%	530	62	13.2%	581	-9	-1.5%
22-Nov-21	465	-10	-2.1%	527	-3	-0.6%	610	29	5.0%
13-Dec-21	476	11	2.4%	532	5	0.9%	599	-11	-1.8%
27-Dec-21	465	-11	-2.3%	526	-6	-1.1%	605	6	1.0%

Notes: \*\* Steel scrap delivered to steel plant

#1 heavy melting – demolition scrap that is at least ¼" thick. This grade does not include the heavy "p & s" (plate and structural ) category that includes the very thick scrap items.

Shredded – largely old cars and some appliances – for all but the West Coast (CA, OR & WA).

#1 busheling – new sheet steel scrap.

Prices released on Wednesdays following the 2nd and 4th Mondays of the month at 9:00 AM to Price Assessment Providers. If a price is not indicated, fewer than ten (10) price inputs were received at that time. The first price release was for Feb.12, 2007 for data go to [steelbenchmarker.com/files/history2.pdf](http://steelbenchmarker.com/files/history2.pdf).

For product specifications refer to last page, or go to [steelbenchmarker.com/specifications](http://steelbenchmarker.com/specifications).

## China

### Ex-works

Dollars per Metric Tonne

	-----HRB-----			-----CRC-----			-----Plate-----			-----Rebar-----		
	Price	Dir Chng	Pct Chng	Price	Dir Chng	Pct Chng	Price	Dir Chng	Pct Chng	Price	Dir Chng	Pct Chng
27-Jul-20	469	7	1.5%	531	10	1.9%	473	4	0.9%	445	0	0.0%
10-Aug-20	480	11	2.3%	545	14	2.6%	482	9	1.9%	453	8	1.8%
24-Aug-20	486	6	1.3%	562	17	3.1%	487	5	1.0%	454	1	0.2%
14-Sep-20	488	2	0.4%	586	24	4.3%	494	7	1.4%	458	4	0.9%
28-Sep-20	479	-9	-1.8%	583	-3	-0.5%	490	-4	-0.8%	451	-7	-1.5%
12-Oct-20	486	7	1.5%	592	9	1.5%	494	4	0.8%	460	9	2.0%
26-Oct-20	493	7	1.4%	605	13	2.2%	500	6	1.2%	469	9	2.0%
09-Nov-20	503	10	2.0%	617	12	2.0%	504	4	0.8%	490	21	4.5%
23-Nov-20	523	20	4.0%	647	30	4.9%	515	11	2.2%	522	32	6.5%
14-Dec-20	578	55	10.5%	714	67	10.4%	551	36	7.0%	522	0	0.0%
28-Dec-20	615	37	6.4%	783	69	9.7%	608	57	10.3%	558	36	6.9%
11-Jan-21	605	-10	-1.6%	757	-26	-3.3%	599	-9	-1.5%	568	10	1.8%
25-Jan-21	585	-20	-3.3%	724	-33	-4.4%	587	-12	-2.0%	555	-13	-2.3%
08-Feb-21	584	-1	-0.2%	722	-2	-0.3%	588	1	0.2%	557	2	0.4%
22-Feb-21	614	30	5.1%	739	17	2.4%	614	26	4.4%	587	30	5.4%
08-Mar-21	634	20	3.3%	753	14	1.9%	639	25	4.1%	603	16	2.7%
22-Mar-21	658	24	3.8%	753	0	0.0%	657	18	2.8%	608	5	0.8%
12-Apr-21	721	63	9.6%	787	34	4.5%	722	65	9.9%	646	38	6.3%
26-Apr-21	741	20	2.8%	801	14	1.8%	734	12	1.7%	664	18	2.8%
10-May-21	805	64	8.6%	868	67	8.4%	795	61	8.3%	737	73	11.0%
24-May-21	753	-52	-6.5%	861	-7	-0.8%	773	-22	-2.8%	696	-41	-5.6%
14-Jun-21	738	-15	-2.0%	846	-15	-1.7%	735	-38	-4.9%	675	-21	-3.0%
28-Jun-21	701	-37	-5.0%	811	-35	-4.1%	701	-34	-4.6%	636	-39	-5.8%
12-Jul-21	730	29	4.1%	824	13	1.6%	711	10	1.4%	651	15	2.4%
26-Jul-21	757	27	3.7%	859	35	4.2%	740	29	4.1%	690	39	6.0%
09-Aug-21	753	-4	-0.5%	861	2	0.2%	747	7	0.9%	687	-3	-0.4%
23-Aug-21	735	-18	-2.4%	852	-9	-1.0%	734	-13	-1.7%	668	-19	-2.8%
13-Sep-21	768	33	4.5%	871	19	2.2%	755	21	2.9%	711	43	6.4%
27-Sep-21	757	-11	-1.4%	865	-6	-0.7%	754	-1	-0.1%	741	30	4.2%
11-Oct-21	778	21	2.8%	875	10	1.2%	776	22	2.9%	779	38	5.1%
25-Oct-21	753	-25	-3.2%	872	-3	-0.3%	772	-4	-0.5%	728	-51	-6.5%
08-Nov-21	676	-77	-10.2%	814	-58	-6.7%	727	-45	-5.8%	650	-78	-10.7%
22-Nov-21	623	-53	-7.8%	753	-61	-7.5%	675	-52	-7.2%	612	-38	-5.8%
13-Dec-21	634	11	1.8%	746	-7	-0.9%	540	-135	-20.0%	628	16	2.6%
27-Dec-21	639	5	0.8%	746	0	0.0%	678	138	25.6%	632	4	0.6%

Notes: SteelHome's non-steelbenchmarker derived average price for each product is the determinant of the Chinese ex-works benchmark price. It is published for comparative purposes.

Prices released on Wednesdays following the 2nd and 4th Mondays of the month at 9:00 AM to Price Assessment Providers. If a price is not indicated, fewer than ten (10) price inputs were received at that time. The first price release was for April 10, 2006 for data go to [steelbenchmarker.com/files/history2.pdf](http://steelbenchmarker.com/files/history2.pdf).

For product specifications refer to last page, or go to [steelbenchmarker.com/specifications](http://steelbenchmarker.com/specifications).

## Western Europe

Ex-works

*Dollars per Metric Tonne*

	-----HRB-----			-----CRC-----			-----Plate-----			-----Rebar-----		
	Price	Dir Chng	Pct Chng	Price	Dir Chng	Pct Chng	Price	Dir Chng	Pct Chng	Price	Dir Chng	Pct Chng
27-Jul-20	479	21	4.5%	na	-	-	na	-	-	na	-	-
10-Aug-20	485	6	1.3%	na	-	-	na	-	-	na	-	-
24-Aug-20	490	5	1.0%	na	-	-	na	-	-	na	-	-
14-Sep-20	575	85	17.3%	na	-	-	na	-	-	na	-	-
28-Sep-20	578	3	0.5%	na	-	-	na	-	-	na	-	-
12-Oct-20	584	6	1.0%	na	-	-	na	-	-	na	-	-
26-Oct-20	597	13	2.2%	na	-	-	na	-	-	na	-	-
09-Nov-20	615	18	3.0%	na	-	-	na	-	-	na	-	-
23-Nov-20	635	20	3.3%	na	-	-	na	-	-	na	-	-
14-Dec-20	666	31	4.9%	na	-	-	na	-	-	na	-	-
28-Dec-20	807	141	21.2%	na	-	-	na	-	-	na	-	-
11-Jan-21	816	9	1.1%	na	-	-	na	-	-	na	-	-
25-Jan-21	821	5	0.6%	na	-	-	na	-	-	na	-	-
08-Feb-21	857	36	4.4%	na	-	-	na	-	-	na	-	-
22-Feb-21	883	26	3.0%	na	-	-	na	-	-	na	-	-
08-Mar-21	866	-17	-1.9%	na	-	-	na	-	-	na	-	-
22-Mar-21	902	36	4.2%	na	-	-	na	-	-	na	-	-
12-Apr-21	1026	124	13.7%	na	-	-	na	-	-	na	-	-
26-Apr-21	1114	88	8.6%	na	-	-	na	-	-	na	-	-
10-May-21	1278	164	14.7%	na	-	-	na	-	-	na	-	-
24-May-21	1344	66	5.2%	na	-	-	na	-	-	na	-	-
14-Jun-21	1388	44	3.3%	na	-	-	na	-	-	na	-	-
28-Jun-21	1420	32	2.3%	na	-	-	na	-	-	na	-	-
12-Jul-21	1395	-25	-1.8%	na	-	-	na	-	-	na	-	-
26-Jul-21	1350	-45	-3.2%	na	-	-	na	-	-	na	-	-
09-Aug-21	1360	10	0.7%	na	-	-	na	-	-	na	-	-
23-Aug-21	1330	-30	-2.2%	na	-	-	na	-	-	na	-	-
13-Sep-21	1325	-5	-0.4%	na	-	-	na	-	-	na	-	-
27-Sep-21	1249	-76	-5.7%	na	-	-	na	-	-	na	-	-
11-Oct-21	1200	-49	-3.9%	na	-	-	na	-	-	na	-	-
25-Oct-21	1190	-10	-0.8%	na	-	-	na	-	-	na	-	-
08-Nov-21	1139	-51	-4.3%	na	-	-	na	-	-	na	-	-
22-Nov-21	1100	-39	-3.4%	na	-	-	na	-	-	na	-	-
13-Dec-21	1016	-84	-7.6%	na	-	-	na	-	-	na	-	-
27-Dec-21	1045	29	2.9%	na	-	-	na	-	-	na	-	-

Notes:

Prices released on Wednesdays following the 2nd and 4th Mondays of the month at 9:00 AM to Price Assessment Providers. If a price is not indicated, fewer than ten (10) price inputs were received at that time. The first price release was for May 8, 2006 for data go to [steelbenchmarker.com/files/history2.pdf](http://steelbenchmarker.com/files/history2.pdf).

For product specifications refer to last page, or go to [steelbenchmarker.com/specifications](http://steelbenchmarker.com/specifications).

## Western Europe

### Ex-works

Euros per Metric Tonne

	Euro (\$/Euro)	-----HRB-----			-----CRC-----			-----Plate-----			-----Rebar-----		
		Price	Euro Chng	Pct Chng	Price	Euro Chng	Pct Chng	Price	Euro Chng	Pct Chng	Price	Euro Chng	Pct Chng
27-Jul-20	1.175	407	3	1%	na	-	-	na	-	-	na	-	-
10-Aug-20	1.174	413	6	1%	na	-	-	na	-	-	na	-	-
24-Aug-20	1.179	416	2	1%	na	-	-	na	-	-	na	-	-
14-Sep-20	1.187	484	69	17%	na	-	-	na	-	-	na	-	-
28-Sep-20	1.166	496	11	2%	na	-	-	na	-	-	na	-	-
12-Oct-20	1.174	498	2	0%	na	-	-	na	-	-	na	-	-
26-Oct-20	1.181	506	8	2%	na	-	-	na	-	-	na	-	-
09-Nov-20	1.181	521	15	3%	na	-	-	na	-	-	na	-	-
23-Nov-20	1.184	536	16	3%	na	-	-	na	-	-	na	-	-
14-Dec-20	1.214	548	12	2%	na	-	-	na	-	-	na	-	-
28-Dec-20	1.221	661	112	20%	na	-	-	na	-	-	na	-	-
11-Jan-21	1.219	670	9	1%	na	-	-	na	-	-	na	-	-
25-Jan-21	1.216	675	5	1%	na	-	-	na	-	-	na	-	-
08-Feb-21	1.205	711	36	5%	na	-	-	na	-	-	na	-	-
22-Feb-21	1.215	727	15	2%	na	-	-	na	-	-	na	-	-
08-Mar-21	1.189	728	2	0%	na	-	-	na	-	-	na	-	-
22-Mar-21	1.188	759	31	4%	na	-	-	na	-	-	na	-	-
12-Apr-21	1.191	862	102	13%	na	-	-	na	-	-	na	-	-
26-Apr-21	1.208	922	60	7%	na	-	-	na	-	-	na	-	-
10-May-21	1.213	1053	132	14%	na	-	-	na	-	-	na	-	-
24-May-21	1.227	1095	42	4%	na	-	-	na	-	-	na	-	-
14-Jun-21	1.212	1145	50	5%	na	-	-	na	-	-	na	-	-
28-Jun-21	1.192	1191	46	4%	na	-	-	na	-	-	na	-	-
12-Jul-21	1.186	1176	-15	-1%	na	-	-	na	-	-	na	-	-
26-Jul-21	1.180	1144	-32	-3%	na	-	-	na	-	-	na	-	-
09-Aug-21	1.174	1159	15	1%	na	-	-	na	-	-	na	-	-
23-Aug-21	1.174	1133	-26	-2%	na	-	-	na	-	-	na	-	-
13-Sep-21	1.181	1122	-10	-1%	na	-	-	na	-	-	na	-	-
27-Sep-21	1.168	1069	-53	-5%	na	-	-	na	-	-	na	-	-
11-Oct-21	1.155	1039	-30	-3%	na	-	-	na	-	-	na	-	-
25-Oct-21	1.161	1025	-14	-1%	na	-	-	na	-	-	na	-	-
08-Nov-21	1.159	983	-42	-4%	na	-	-	na	-	-	na	-	-
22-Nov-21	1.123	979	-4	0%	na	-	-	na	-	-	na	-	-
13-Dec-21	1.132	898	-82	-8%	na	-	-	na	-	-	na	-	-
27-Dec-21	1.133	923	25	3%	na	-	-	na	-	-	na	-	-

Notes:

Prices released on Wednesdays following the 2nd and 4th Mondays of the month at 9:00 AM to Price Assessment Providers. If a price is not indicated, fewer than ten (10) price inputs were received at that time. The first price release was for May 8, 2006 for data go to [steelbenchmarker.com/files/history2.pdf](http://steelbenchmarker.com/files/history2.pdf).

For product specifications refer to last page, or go to [steelbenchmarker.com/specifications](http://steelbenchmarker.com/specifications).

## World Export Price

FOB the Port of Export

Dollars per Metric Tonne

	-----HRB-----			-----CRC-----			-----Plate-----			-----Rebar-----		
	Price	Dir Chng	Pct Chng	Price	Dir Chng	Pct Chng	Price	Dir Chng	Pct Chng	Price	Dir Chng	Pct Chng
27-Jul-20	448	29	6.8%	na	-	-	na	-	-	na	-	-
10-Aug-20	475	28	6.1%	na	-	-	na	-	-	na	-	-
24-Aug-20	500	25	5.3%	na	-	-	na	-	-	na	-	-
14-Sep-20	510	10	2.0%	na	-	-	na	-	-	na	-	-
28-Sep-20	512	2	0.4%	na	-	-	na	-	-	na	-	-
12-Oct-20	511	-1	-0.2%	na	-	-	na	-	-	na	-	-
26-Oct-20	524	13	2.5%	na	-	-	na	-	-	na	-	-
09-Nov-20	530	6	1.1%	na	-	-	na	-	-	na	-	-
23-Nov-20	610	80	15.1%	na	-	-	na	-	-	na	-	-
14-Dec-20	653	43	7.0%	na	-	-	na	-	-	na	-	-
28-Dec-20	672	19	2.9%	na	-	-	na	-	-	na	-	-
11-Jan-21	730	58	8.6%	na	-	-	na	-	-	na	-	-
25-Jan-21	758	28	3.8%	na	-	-	na	-	-	na	-	-
08-Feb-21	730	-28	-3.7%	na	-	-	na	-	-	na	-	-
22-Feb-21	730	0	0.0%	na	-	-	na	-	-	na	-	-
08-Mar-21	783	53	7.3%	na	-	-	na	-	-	na	-	-
22-Mar-21	838	55	7.0%	na	-	-	na	-	-	na	-	-
12-Apr-21	911	73	8.7%	na	-	-	na	-	-	na	-	-
26-Apr-21	965	54	5.9%	na	-	-	na	-	-	na	-	-
10-May-21	1069	104	10.8%	na	-	-	na	-	-	na	-	-
24-May-21	1100	31	2.9%	na	-	-	na	-	-	na	-	-
14-Jun-21	1091	-9	-0.8%	na	-	-	na	-	-	na	-	-
28-Jun-21	1045	-46	-4.2%	na	-	-	na	-	-	na	-	-
12-Jul-21	1030	-15	-1.4%	na	-	-	na	-	-	na	-	-
26-Jul-21	981	-49	-4.8%	na	-	-	na	-	-	na	-	-
09-Aug-21	970	-11	-1.1%	na	-	-	na	-	-	na	-	-
23-Aug-21	943	-27	-2.8%	na	-	-	na	-	-	na	-	-
13-Sep-21	945	2	0.2%	na	-	-	na	-	-	na	-	-
27-Sep-21	911	-34	-3.6%	na	-	-	na	-	-	na	-	-
11-Oct-21	880	-31	-3.4%	na	-	-	na	-	-	na	-	-
25-Oct-21	890	10	1.1%	na	-	-	na	-	-	na	-	-
08-Nov-21	903	13	1.5%	na	-	-	na	-	-	na	-	-
22-Nov-21	900	-3	-0.3%	na	-	-	na	-	-	na	-	-
13-Dec-21	820	-80	-8.9%	na	-	-	na	-	-	na	-	-
27-Dec-21	800	-20	-2.4%	na	-	-	na	-	-	na	-	-

Notes:

Prices released on Wednesdays following the 2nd and 4th Mondays of the month at 9:00 AM to Price Assessment Providers. If a price is not indicated, fewer than ten (10) price inputs were received at that time. The first price release was for April 10, 2006 for data go to [steelbenchmarker.com/files/history2.pdf](http://steelbenchmarker.com/files/history2.pdf).

For product specifications refer to last page, or go to [steelbenchmarker.com/specifications](http://steelbenchmarker.com/specifications).

**Spot Market New Booking Prices for Near-Term Delivery  
Commodity-grade product to mid-sized buyers**

*(Dollars per Metric Tonne, 500 to 2,000 tonnes transaction size)*

**USA Market  
East of the Mississippi**

FOB mill
<b>Hot-rolled band *</b> (0.2" thick x 48-60" wide)
<b>Cold-rolled coil *</b> (0.03" x 48-60" wide)
<b>Rebar #5 *</b> (5/8" in diameter)
<b>Standard plate *</b> (1" x 96" x 240")
<b>Steel scrap **</b> #1 Heavy melting Shredded - all but West Coast #1 Busheling

**Western Europe Market  
Germany/France**

Ex-works
<b>Hot-rolled band *</b> (5mm thick x 1200-1500mm wide)
<b>Cold-rolled coil *</b> (0.7mm x 1200-1500mm wide)
<b>Rebar #5 *</b> (16mm in diameter)
<b>Standard plate *</b> (24mm x 2400mm x 6000mm)

**Chinese Market  
Home Market**

Ex-works
<b>Hot-rolled band *</b> (5mm thick x 1200-1500mm wide)
<b>Cold-rolled coil *</b> (0.7mm x 1200-1500mm wide)
<b>Rebar #5 *</b> (16mm in diameter)
<b>Standard plate *</b> (24mm x 2400mm x 6000mm)

**World Export Market  
Atlantic and Pacific Basin**

FOB port of export
<b>Hot-rolled band ***</b> (5mm thick x 1200-1500mm wide)
<b>Cold-rolled coil ***</b> (0.7mm x 1200-1500mm wide)
<b>Rebar #5 ***</b> (16mm in diameter)
<b>Standard plate ***</b> (24mm x 2400mm x 6000mm)

Note: Near-term delivery is normally two to six weeks.

Hot-rolled band is the first product off the hot strip mill with: (1) a thickness of about 0.20 inch (but no less than 0.10 inch or more than 0.50 inch); (2) a coil size of 10 to 20 tons; (3) a width of 48 to 60 inches; and (4) a carbon component of 0.08% to 0.13%.

SteelHome's average price for each product is the determinant of the Chinese ex-works benchmark price. It is published for comparative purposes.

\* Ex-works (the same as FOB mill).

\*\* Steel scrap delivered to steel plant on a near-term basis, normally from two days to a month.

#1 heavy melting – demolition scrap that is at least ¼” thick and surface dimension no larger than 60 by 24 inches. This grade does not include the heavy “p & s” (plate and structural ) category that includes the very thick scrap items.

Shredded – largely old cars and some appliances – for all but the West Coast (California, Oregon and Washington).

Shredded scrap is homogeneous iron and steel scrap magnetically separated, no. 1, no. 2 steel, miscellaneous bailing and sheet scrap with an average weight from 50 to 70 pounds per square foot.

#1 busheling – new sheet steel scrap.

\*\*\* FOB port of export