

# Price History

## Tables and Charts

**USA**

**China**

**Western Europe**

**World Export**

Hot-rolled Band

Cold-rolled Coil

Standard Plate

Rebar

Steel Scrap

Register at: [www.steelbenchmarker.com](http://www.steelbenchmarker.com)



## Global HRC Prices Rally as 2022 Ends

Western Europe, World Export and USA up 15.2%, 9.0% and 2.2%; China down 0.8%.

### *SteelBenchmarker*<sup>™</sup> Report #401

ENGLEWOOD CLIFFS, NJ – The bi-monthly *SteelBenchmarker*<sup>™</sup> United States HRB price for December 26<sup>th</sup> went up to \$753 per tonne for the second time. The World Export HRB continue trending up to \$605 per tonne for the second time. The Western European HRB price rise to \$720 per tonne (on a Euro basis, it was up €82) after going down twice. The China HRB price dropped to \$495 per tonne after going up in the previous report.

In its four hundred and first report, the *SteelBenchmarker*<sup>™</sup> released 10 steel products and 3 USA scrap prices. Of these, here are four benchmark prices for hot-rolled band December 26, 2022:

**USA** – \$753 per metric tonne (\$683 per net ton), FOB the mill – up \$16 from \$737 (\$669 nt) two weeks ago, up \$341 from the recent low of \$412 (\$374 nt) on Dec. 14, 2015 and down \$324 from the low of \$429 per tonne (\$390 nt) on May 25, 2009. It is down \$253 per tonne from the recent high of \$1,006 (\$912 nt) on Jul. 11, 2018. Also, it is down \$450 from the previous record peak of \$1,203 per tonne (\$1,091 nt) on July 28, 2008 and down \$1,390 (64.9%) from the record peak of \$2,143 per tonne (\$1,094 nt) on October 11, 2021.

**China** – \$495 per metric tonne, ex-works – down \$4 from \$499 two weeks ago, up \$264 per tonne from the recent low of \$231 on Dec. 14, 2015 and up \$88 per tonne from the low of \$407 per tonne on Oct. 12, 2009. It is down \$142 per tonne from the recent high of \$637 on Aug. 22, 2011. Also, it is down \$238 from the previous record peak of \$733 per tonne on July 14, 2008 and down \$310 (38.5%) from the record peak of \$805 per tonne on May 10, 2021.

**Western Europe** - \$720 (€677) per metric tonne, ex-works – up \$95 (up €82) from \$625 (€633) two weeks ago, up \$374 (up €352) from the recent low of \$346 (€325) on Nov. 23, 2015 and up \$149 (up €296) from the low of \$571 (€381) per tonne on Nov. 23, 2009. It is down \$132 (up €72) per tonne from the recent high of \$852 (€605) on Mar. 28, 2011. Also, it is down \$484 (down €79) from the previous record peak of \$1,204 (€756) per tonne on July 14, 2008 and down \$830 (53.5%) (down €735) (52.1%) from the record peak of \$1,550 (€1,412) per tonne on March 28, 2022.

**World Export Price** – \$605 per metric tonne, FOB the port of export – up \$50 from \$555 compared to two weeks ago, up \$333 per tonne from the recent low of \$272 on Feb. 8, 2016 and up \$109 from the low of \$496 per tonne on Nov. 9, 2009. It is down \$168 per tonne from the recent high of \$773 on Feb 14, 2011. Also, it is down \$508 from the previous record peak of \$1,113 per tonne on July 28, 2008 and down \$670 (52.5%) from the record peak of \$1,275 per tonne on April 11, 2022.



## STEELBENCHMARKER PRICES

December 26, 2022

dollars per metric tonne  
(net ton) [gross ton] {Euros}

### Region: USA, East of the Mississippi

Hot-rolled band:	753	(683)
Cold-rolled coil:	987	(895)
Standard plate:	1,675	(1,520)
#1 Heavy melting scrap:	309	[314]
Shredded scrap*:	385	[391]
#1 Busheling scrap:	381	[387]

### Region: Mainland China\*\*\*

Hot-rolled band:	495
Cold-rolled coil:	563
Rebar:	484
Standard plate:	503

### Region: Western Europe

Hot-rolled band:	720	{677e}
------------------	-----	--------

### Region: World Export Market

Hot-rolled band:	605
------------------	-----

#### NOTES:

Released December 28, 2022 at 9:00 a.m. to Price Assessment Providers.  
The first price release was for April 10, 2006.

If a product is not listed or a price is not indicated, fewer than ten (10) price inputs were received at this time. \*\* Development stage -- fewer than 20 assessment providers.

Prices are: USA -- FOB mill; Western Europe and China -- Ex-works; and World Export Market - - FOB port of export. For USA steel scrap -- delivered to the steel plant. \* For shredded scrap the region is "for all but the West Coast" (CA, OR & WA).

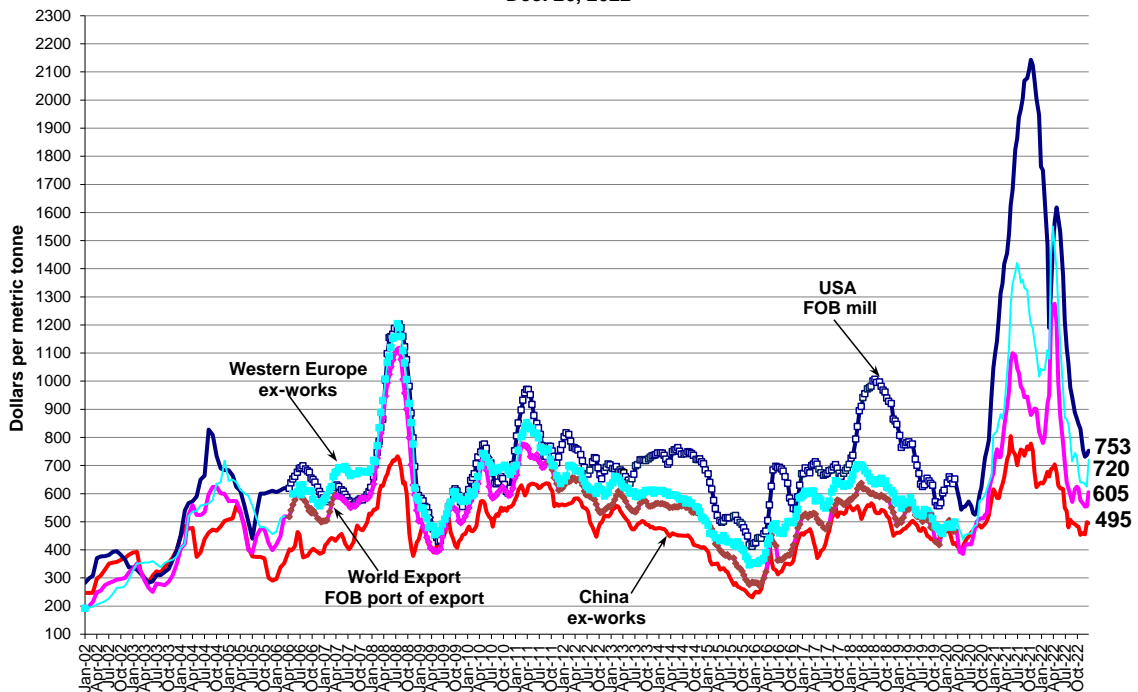
\*\*\* SteelHome's non-steelbenchmarker derived average price for each product is the determinant of the Chinese ex-works benchmark price. It is published for comparative purposes.

For product specifications go to [www.steelbenchmarker.com/specifications](http://www.steelbenchmarker.com/specifications).

## SteelBenchmarker™ HRB Price

USA, China, Western Europe and World Export  
 (WSD's PriceTrack data, Jan. 2002 - March 2006; SteelBenchmarker data begins April 2006)

Dec. 26, 2022

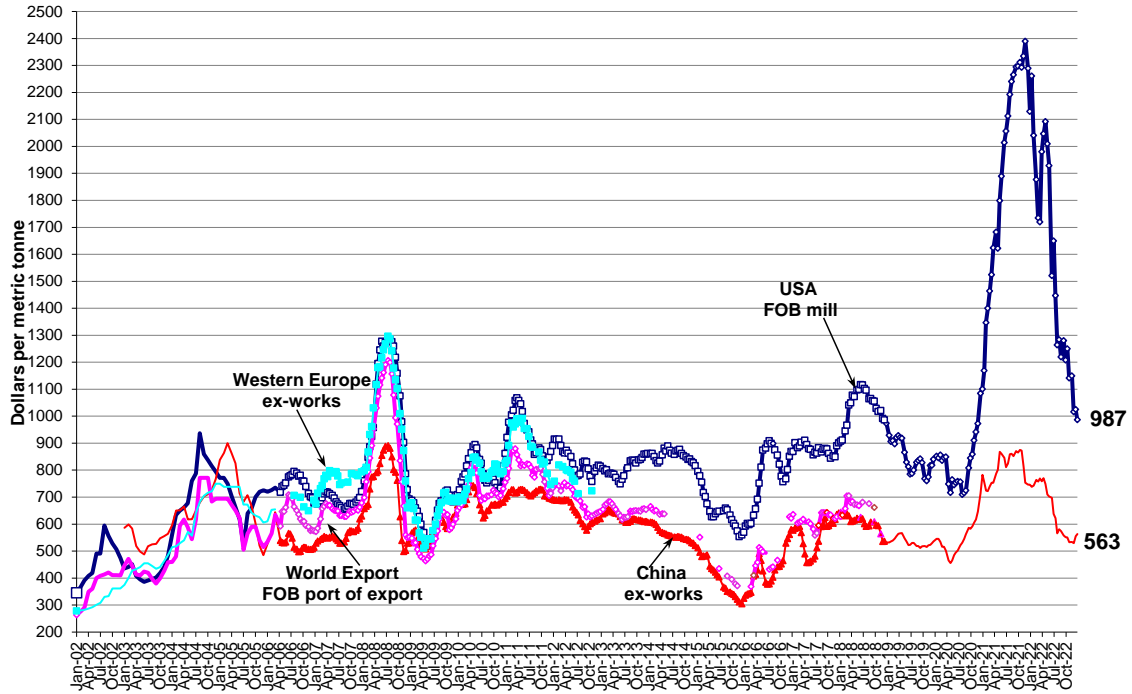


## SteelBenchmarker™ CRC Price

### USA, China, Western Europe and World Export

(WSD's PriceTrack data, Jan. 2002 - March 2006; SteelBenchmarker data begins April 2006)

Dec. 26, 2022

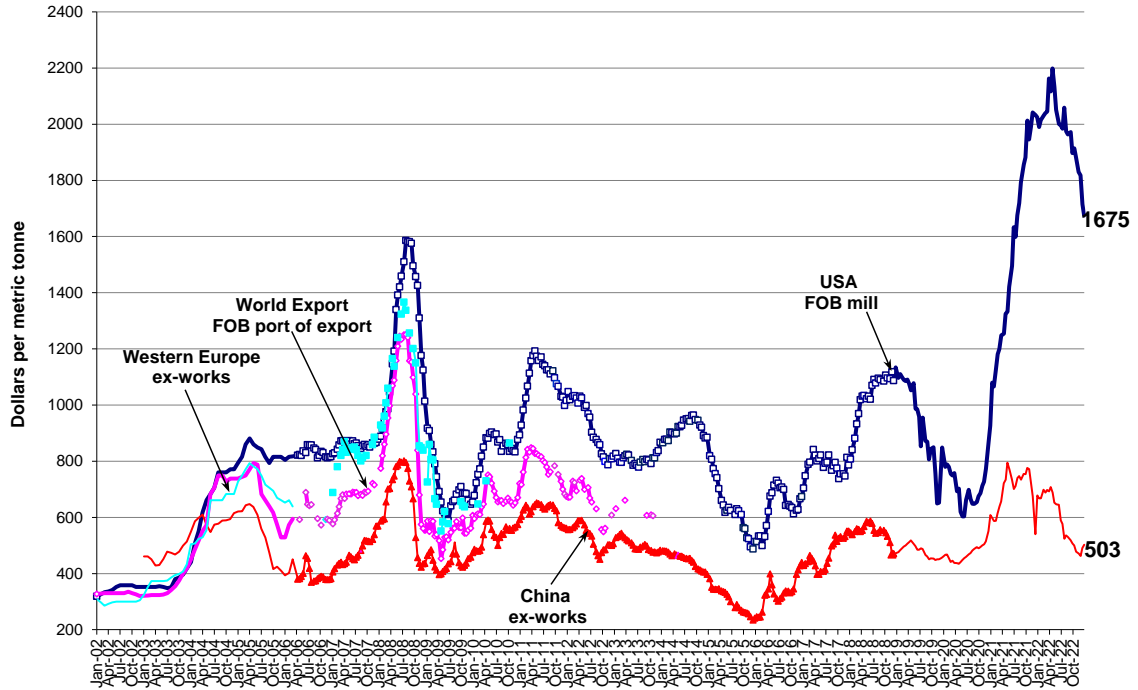


## SteelBenchmarker™ Plate Price

USA, China, Western Europe and World Export

(WSD's PriceTrack data, Jan. 2002 - March 2006; SteelBenchmarker data begins April 2006)

Dec. 26, 2022

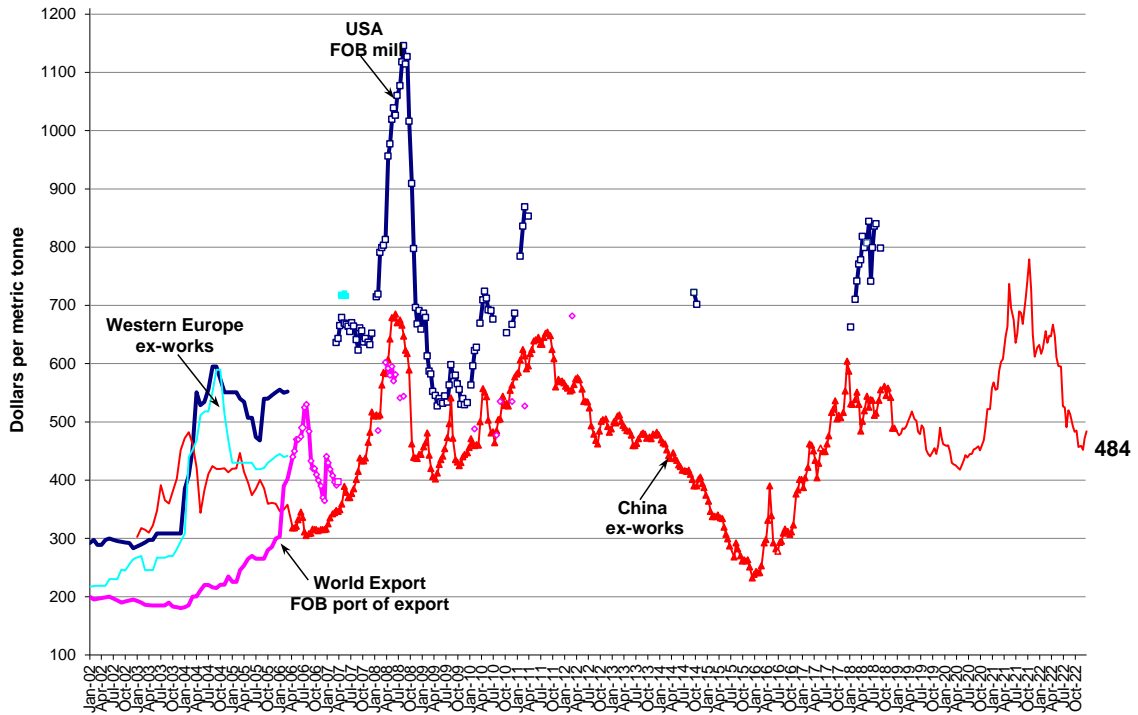


## SteelBenchmarker™ Rebar Price

USA, China, Western Europe and World Export

(WSD's PriceTrack data, Jan. 2002 - March 2006; SteelBenchmarker data begins April 2006)

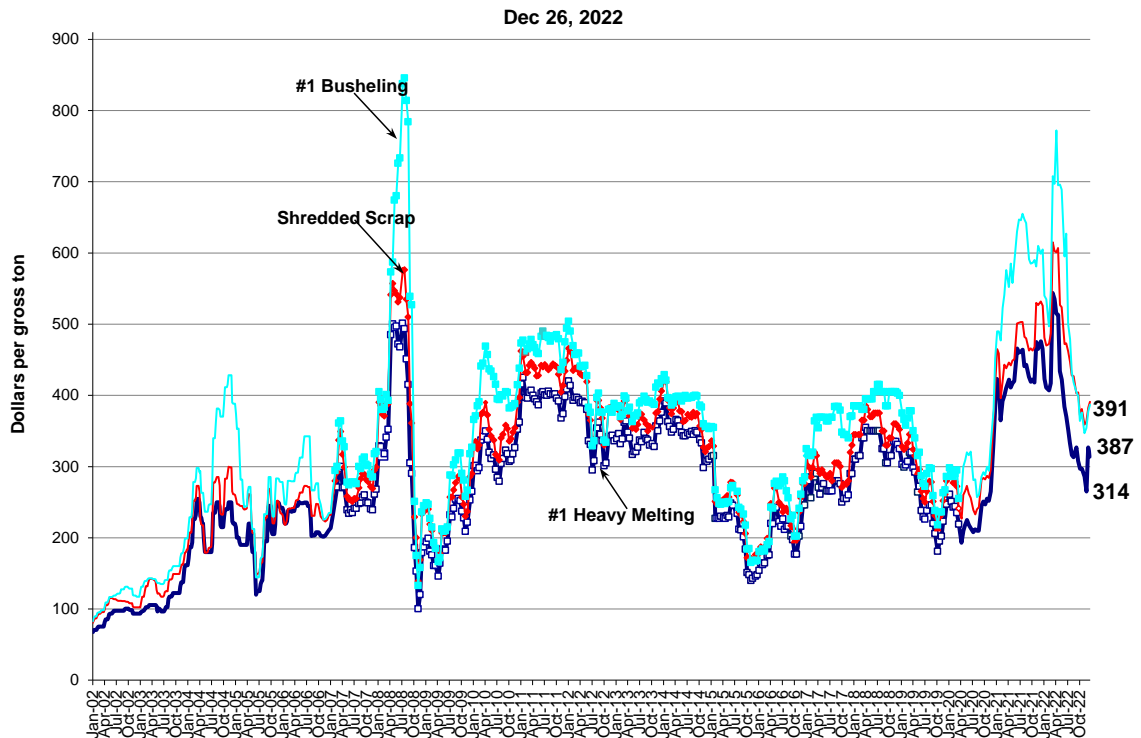
Dec 26, 2022



## SteelBenchmarker™ Scrap Price

USA, delivered to steel plant

(AMM scrap price data, Jan. 2002 - Jan. 2007; SteelBenchmarker data begins Feb. 2007)





**USA**  
**FOB mill\***  
*Dollars per Net Ton*

	-----HRB-----			-----CRC-----			-----Plate-----			-----Rebar-----		
	<u>Price</u>	<u>Dir</u> <u>Chng</u>	<u>Pct</u> <u>Chng</u>	<u>Price</u>	<u>Dir</u> <u>Chng</u>	<u>Pct</u> <u>Chng</u>	<u>Price</u>	<u>Dir</u> <u>Chng</u>	<u>Pct</u> <u>Chng</u>	<u>Price</u>	<u>Dir</u> <u>Chng</u>	<u>Pct</u> <u>Chng</u>
26-Jul-21	1784	25	1.4%	1989	73	3.8%	1520	70	4.8%	na	-	-
09-Aug-21	1819	35	2.0%	2033	44	2.2%	1559	39	2.6%	na	-	-
23-Aug-21	1877	58	3.2%	2056	23	1.1%	1627	67	4.3%	na	-	-
13-Sep-21	1885	8	0.4%	2082	26	1.3%	1684	57	3.5%	na	-	-
27-Sep-21	1910	24	1.3%	2085	3	0.1%	1707	24	1.4%	na	-	-
11-Oct-21	1944	34	1.8%	2097	13	0.6%	1826	119	7.0%	na	-	-
25-Oct-21	1927	-17	-0.9%	2080	-17	-0.8%	1765	-61	-3.3%	na	-	-
08-Nov-21	1880	-47	-2.4%	2118	38	1.8%	1806	41	2.3%	na	-	-
22-Nov-21	1820	-60	-3.2%	2168	50	2.4%	1852	46	2.6%	na	-	-
13-Dec-21	1766	-54	-2.9%	2077	-91	-4.2%	1844	-8	-0.4%	na	-	-
27-Dec-21	1599	-167	-9.5%	1932	-145	-7.0%	1837	-7	-0.4%	1207	0	0.0%
10-Jan-22	1588	-12	-0.7%	2051	119	6.2%	1805	-32	-1.7%	na	-	-
24-Jan-22	1500	-88	-5.5%	1852	-200	-9.7%	1828	23	1.3%	na	-	-
14-Feb-22	1349	-151	-10.0%	1703	-149	-8.0%	1843	15	0.8%	na	-	-
28-Feb-22	1079	-270	-20.0%	1574	-129	-7.6%	1850	7	0.4%	na	-	-
14-Mar-22	1208	130	12.0%	1560	-14	-0.9%	1855	5	0.3%	na	-	-
28-Mar-22	1343	134	11.1%	1796	236	15.1%	1962	107	5.8%	na	-	-
11-Apr-22	1422	79	5.9%	1857	61	3.4%	1921	-42	-2.1%	na	-	-
25-Apr-22	1468	46	3.3%	1898	41	2.2%	1995	74	3.9%	na	-	-
09-May-22	1432	-35	-2.4%	1823	-74	-3.9%	1934	-61	-3.0%	na	-	-
23-May-22	1389	-44	-3.0%	1750	-73	-4.0%	1861	-73	-3.8%	na	-	-
13-Jun-22	1247	-142	-10.2%	1380	-370	-21.1%	1814	-46	-2.5%	na	-	-
27-Jun-22	1101	-146	-11.7%	1497	117	8.5%	1812	-3	-0.1%	na	-	-
11-Jul-22	1015	-86	-7.8%	1313	-184	-12.3%	1800	-12	-0.7%	na	-	-
25-Jul-22	966	-49	-4.8%	1147	-166	-12.6%	1868	68	3.8%	na	-	-
08-Aug-22	886	-80	-8.3%	1165	18	1.6%	1792	-76	-4.1%	na	-	-
22-Aug-22	855	-31	-3.5%	1107	-58	-5.0%	1782	-10	-0.6%	na	-	-
12-Sep-22	806	-50	-5.8%	1161	54	4.9%	1789	7	0.4%	na	-	-
26-Sep-22	787	-18	-2.3%	1096	-65	-5.6%	1721	-68	-3.8%	na	-	-
10-Oct-22	769	-18	-2.3%	1134	38	3.5%	1736	15	0.9%	na	-	-
24-Oct-22	754	-15	-2.0%	1036	-98	-8.6%	1708	-28	-1.6%	na	-	-
14-Nov-22	686	-68	-9.0%	1043	7	0.7%	1660	-48	-2.8%	na	-	-
28-Nov-22	663	-23	-3.3%	922	-122	-11.7%	1649	-11	-0.7%	na	-	-
12-Dec-22	669	5	0.8%	930	8	0.9%	1556	-93	-5.7%	na	-	-
26-Dec-22	683	15	2.2%	895	-34	-3.7%	1520	-36	-2.3%	na	-	-

Notes: \* Ex-works (the same as FOB mill)

Prices released on Wednesdays following the 2nd and 4th Mondays of the month at 9:00 AM to Price Assessment Providers. If a price is not indicated, fewer than ten (10) price inputs were received at that time. The first price release was for April 10, 2006 for data go to [steelbenchmarker.com/files/history2.pdf](http://steelbenchmarker.com/files/history2.pdf).

For product specifications refer to last page, or go to [steelbenchmarker.com/specifications](http://steelbenchmarker.com/specifications).

## USA

FOB mill\*

Dollars per Metric Tonne

	-----HRB-----			-----CRC-----			-----Plate-----			-----Rebar-----		
	<u>Price</u>	<u>Dlr Chng</u>	<u>Pct Chng</u>	<u>Price</u>	<u>Dlr Chng</u>	<u>Pct Chng</u>	<u>Price</u>	<u>Dlr Chng</u>	<u>Pct Chng</u>	<u>Price</u>	<u>Dlr Chng</u>	<u>Pct Chng</u>
26-Jul-21	1966	28	1.4%	2193	80	3.8%	1676	77	4.8%	na	-	-
09-Aug-21	2005	39	2.0%	2241	48	2.2%	1719	43	2.6%	na	-	-
23-Aug-21	2069	64	3.2%	2266	25	1.1%	1793	74	4.3%	na	-	-
13-Sep-21	2078	9	0.4%	2295	29	1.3%	1856	63	3.5%	na	-	-
27-Sep-21	2105	27	1.3%	2298	3	0.1%	1882	26	1.4%	na	-	-
11-Oct-21	2143	38	1.8%	2312	14	0.6%	2013	131	7.0%	na	-	-
25-Oct-21	2124	-19	-0.9%	2293	-19	-0.8%	1946	-67	-3.3%	na	-	-
08-Nov-21	2072	-52	-2.4%	2335	42	1.8%	1991	45	2.3%	na	-	-
22-Nov-21	2006	-66	-3.2%	2390	55	2.4%	2042	51	2.6%	na	-	-
13-Dec-21	1947	-59	-2.9%	2290	-100	-4.2%	2033	-9	-0.4%	na	-	-
27-Dec-21	1763	-184	-9.5%	2130	-160	-7.0%	2025	-8	-0.4%	1330	0	0.0%
10-Jan-22	1750	-13	-0.7%	2261	131	6.2%	1990	-35	-1.7%	na	-	-
24-Jan-22	1653	-97	-5.5%	2041	-220	-9.7%	2015	25	1.3%	na	-	-
14-Feb-22	1487	-166	-10.0%	1877	-164	-8.0%	2031	16	0.8%	na	-	-
28-Feb-22	1189	-298	-20.0%	1735	-142	-7.6%	2039	8	0.4%	na	-	-
14-Mar-22	1332	143	12.0%	1720	-15	-0.9%	2045	6	0.3%	na	-	-
28-Mar-22	1480	148	11.1%	1980	260	15.1%	2163	118	5.8%	na	-	-
11-Apr-22	1567	87	5.9%	2047	67	3.4%	2117	-46	-2.1%	na	-	-
25-Apr-22	1618	51	3.3%	2092	45	2.2%	2199	82	3.9%	na	-	-
09-May-22	1579	-39	-2.4%	2010	-82	-3.9%	2132	-67	-3.0%	na	-	-
23-May-22	1531	-48	-3.0%	1929	-81	-4.0%	2051	-81	-3.8%	na	-	-
13-Jun-22	1375	-156	-10.2%	1521	-408	-21.1%	2000	-51	-2.5%	na	-	-
27-Jun-22	1214	-161	-11.7%	1650	129	8.5%	1997	-3	-0.2%	na	-	-
11-Jul-22	1119	-95	-7.8%	1447	-203	-12.3%	1984	-13	-0.7%	na	-	-
25-Jul-22	1065	-54	-4.8%	1264	-183	-12.6%	2059	75	3.8%	na	-	-
08-Aug-22	977	-88	-8.3%	1284	20	1.6%	1975	-84	-4.1%	na	-	-
22-Aug-22	943	-34	-3.5%	1220	-64	-5.0%	1964	-11	-0.6%	na	-	-
12-Sep-22	888	-55	-5.8%	1280	60	4.9%	1972	8	0.4%	na	-	-
26-Sep-22	868	-20	-2.3%	1208	-72	-5.6%	1897	-75	-3.8%	na	-	-
10-Oct-22	848	-20	-2.3%	1250	42	3.5%	1914	17	0.9%	na	-	-
24-Oct-22	831	-17	-2.0%	1142	-108	-8.6%	1883	-31	-1.6%	na	-	-
14-Nov-22	756	-75	-9.0%	1150	8	0.7%	1830	-53	-2.8%	na	-	-
28-Nov-22	731	-25	-3.3%	1016	-134	-11.7%	1818	-12	-0.7%	na	-	-
12-Dec-22	737	6	0.8%	1025	9	0.9%	1715	-103	-5.7%	na	-	-
26-Dec-22	753	16	2.2%	987	-38	-3.7%	1675	-40	-2.3%	na	-	-

Notes: \* Ex-works (the same as FOB mill)

Prices released on Wednesdays following the 2nd and 4th Mondays of the month at 9:00 AM to Price Assessment Providers. If a price is not indicated, fewer than ten (10) price inputs were received at that time. The first price release was for April 10, 2006 for data go to [steelbenchmarker.com/files/history2.pdf](http://steelbenchmarker.com/files/history2.pdf).

For product specifications refer to last page, or go to [steelbenchmarker.com/specifications](http://steelbenchmarker.com/specifications).

## USA

delivered to steel plant

Dollars per Gross Ton

-----Steel Scrap**-----									
	#1 Heavy Melting			Shredded Scrap			#1 Busheling		
	Price	Dlr Chng	Pct Chng	Price	Dlr Chng	Pct Chng	Price	Dlr Chng	Pct Chng
26-Jul-21	464	3	0.7%	503	0	0.0%	655	9	1.4%
09-Aug-21	441	-23	-5.0%	482	-21	-4.2%	647	-8	-1.2%
23-Aug-21	443	2	0.5%	480	-2	-0.4%	642	-5	-0.8%
13-Sep-21	426	-17	-3.8%	463	-17	-3.5%	591	-51	-7.9%
27-Sep-21	419	-7	-1.6%	466	3	0.6%	585	-6	-1.0%
11-Oct-21	422	3	0.7%	463	-3	-0.6%	586	1	0.2%
25-Oct-21	418	-4	-0.9%	468	5	1.1%	590	4	0.7%
08-Nov-21	475	57	13.6%	530	62	13.2%	581	-9	-1.5%
22-Nov-21	465	-10	-2.1%	527	-3	-0.6%	610	29	5.0%
13-Dec-21	476	11	2.4%	532	5	0.9%	599	-11	-1.8%
27-Dec-21	465	-11	-2.3%	526	-6	-1.1%	605	6	1.0%
10-Jan-22	423	-42	-9.0%	481	-45	-8.6%	540	-65	-10.7%
24-Jan-22	411	-12	-2.8%	470	-11	-2.3%	535	-5	-0.9%
14-Feb-22	407	-4	-1.0%	472	2	0.4%	497	-38	-7.1%
28-Feb-22	417	10	2.5%	487	15	3.2%	549	52	10.5%
14-Mar-22	544	127	30.5%	615	128	26.3%	708	159	29.0%
28-Mar-22	535	-9	-1.7%	603	-12	-2.0%	697	-11	-1.6%
11-Apr-22	515	-20	-3.7%	601	-2	-0.3%	772	75	10.8%
25-Apr-22	513	-2	-0.4%	607	6	1.0%	695	-77	-10.0%
09-May-22	434	-79	-15.4%	527	-80	-13.2%	696	1	0.1%
23-May-22	422	-12	-2.8%	524	-3	-0.6%	689	-7	-1.0%
13-Jun-22	384	-38	-9.0%	472	-52	-9.9%	595	-94	-13.6%
27-Jun-22	370	-14	-3.6%	473	1	0.2%	627	32	5.4%
11-Jul-22	351	-19	-5.1%	462	-11	-2.3%	500	-127	-20.3%
25-Jul-22	333	-18	-5.1%	447	-15	-3.2%	479	-21	-4.2%
08-Aug-22	316	-17	-5.1%	428	-19	-4.3%	433	-46	-9.6%
22-Aug-22	313	-3	-0.9%	427	-1	-0.2%	418	-15	-3.5%
12-Sep-22	327	14	4.5%	403	-24	-5.6%	405	-13	-3.1%
26-Sep-22	308	-19	-5.8%	404	1	0.2%	399	-6	-1.5%
10-Oct-22	297	-11	-3.6%	372	-32	-7.9%	364	-35	-8.8%
24-Oct-22	297	0	0.0%	381	9	2.4%	376	12	3.3%
14-Nov-22	286	-11	-3.7%	359	-22	-5.8%	347	-29	-7.7%
28-Nov-22	265	-21	-7.3%	363	4	1.1%	354	7	2.0%
12-Dec-22	327	62	23.4%	383	20	5.5%	378	24	6.8%
26-Dec-22	314	-13	-4.0%	391	8	2.1%	387	9	2.4%

Notes: \*\* Steel scrap delivered to steel plant

#1 heavy melting – demolition scrap that is at least ¼" thick. This grade does not include the heavy "p & s" (plate and structural ) category that includes the very thick scrap items.

Shredded – largely old cars and some appliances – for all but the West Coast (CA, OR & WA).

#1 busheling – new sheet steel scrap.

Prices released on Wednesdays following the 2nd and 4th Mondays of the month at 9:00 AM to Price Assessment Providers. If a price is not indicated, fewer than ten (10) price inputs were received at that time. The first price release was for Feb.12, 2007 for data go to [steelbenchmarker.com/files/history2.pdf](http://steelbenchmarker.com/files/history2.pdf).

For product specifications refer to last page, or go to [steelbenchmarker.com/specifications](http://steelbenchmarker.com/specifications).

## China

### Ex-works

Dollars per Metric Tonne

	-----HRB-----			-----CRC-----			-----Plate-----			-----Rebar-----		
	Price	Dir Chng	Pct Chng	Price	Dir Chng	Pct Chng	Price	Dir Chng	Pct Chng	Price	Dir Chng	Pct Chng
26-Jul-21	757	27	3.7%	859	35	4.2%	740	29	4.1%	690	39	6.0%
09-Aug-21	753	-4	-0.5%	861	2	0.2%	747	7	0.9%	687	-3	-0.4%
23-Aug-21	735	-18	-2.4%	852	-9	-1.0%	734	-13	-1.7%	668	-19	-2.8%
13-Sep-21	768	33	4.5%	871	19	2.2%	755	21	2.9%	711	43	6.4%
27-Sep-21	757	-11	-1.4%	865	-6	-0.7%	754	-1	-0.1%	741	30	4.2%
11-Oct-21	778	21	2.8%	875	10	1.2%	776	22	2.9%	779	38	5.1%
25-Oct-21	753	-25	-3.2%	872	-3	-0.3%	772	-4	-0.5%	728	-51	-6.5%
08-Nov-21	676	-77	-10.2%	814	-58	-6.7%	727	-45	-5.8%	650	-78	-10.7%
22-Nov-21	623	-53	-7.8%	753	-61	-7.5%	675	-52	-7.2%	612	-38	-5.8%
13-Dec-21	634	11	1.8%	746	-7	-0.9%	540	-135	-20.0%	628	16	2.6%
27-Dec-21	639	5	0.8%	746	0	0.0%	678	138	25.6%	632	4	0.6%
10-Jan-22	636	-3	-0.5%	738	-8	-1.1%	668	-10	-1.5%	617	-15	-2.4%
24-Jan-22	646	10	1.6%	743	5	0.7%	668	0	0.0%	626	9	1.5%
14-Feb-22	678	32	5.0%	764	21	2.8%	699	31	4.6%	656	30	4.8%
28-Feb-22	661	-17	-2.5%	758	-6	-0.8%	688	-11	-1.6%	636	-20	-3.0%
14-Mar-22	687	26	3.9%	769	11	1.5%	698	10	1.5%	648	12	1.9%
28-Mar-22	691	4	0.6%	759	-10	-1.3%	693	-5	-0.7%	647	-1	-0.2%
11-Apr-22	704	13	1.9%	770	11	1.4%	708	15	2.2%	667	20	3.1%
25-Apr-22	676	-28	-4.0%	749	-21	-2.7%	688	-20	-2.8%	648	-19	-2.8%
09-May-22	629	-47	-7.0%	710	-39	-5.2%	653	-35	-5.1%	611	-37	-5.7%
23-May-22	619	-10	-1.6%	703	-7	-1.0%	647	-6	-0.9%	596	-15	-2.5%
13-Jun-22	616	-3	-0.5%	697	-6	-0.9%	645	-2	-0.3%	595	-1	-0.2%
27-Jun-22	549	-67	-10.9%	638	-59	-8.5%	590	-55	-8.5%	527	-68	-11.4%
11-Jul-22	538	-11	-2.0%	622	-16	-2.5%	577	-13	-2.2%	525	-2	-0.4%
25-Jul-22	480	-58	-10.8%	566	-56	-9.0%	524	-53	-9.2%	491	-34	-6.5%
08-Aug-22	507	27	5.6%	581	15	2.7%	536	12	2.3%	520	29	5.9%
22-Aug-22	497	-10	-2.0%	574	-7	-1.2%	530	-6	-1.1%	514	-6	-1.2%
12-Sep-22	492	-5	-1.0%	558	-16	-2.8%	519	-11	-2.1%	492	-22	-4.3%
26-Sep-22	485	-7	-1.4%	552	-6	-1.1%	507	-12	-2.3%	483	-9	-1.8%
10-Oct-22	482	-3	-0.6%	551	-1	-0.2%	500	-7	-1.4%	485	2	0.4%
24-Oct-22	453	-29	-6.0%	533	-18	-3.3%	478	-22	-4.4%	457	-28	-5.8%
14-Nov-22	460	7	1.5%	534	1	0.2%	471	-7	-1.5%	459	2	0.4%
28-Nov-22	455	-5	-1.1%	529	-5	-0.9%	463	-8	-1.7%	452	-7	-1.5%
12-Dec-22	499	44	9.7%	555	26	4.9%	491	28	6.0%	472	20	4.4%
26-Dec-22	495	-4	-0.8%	563	8	1.4%	503	12	2.4%	484	12	2.5%

Notes: SteelHome's non-steelbenchmarker derived average price for each product is the determinant of the Chinese ex-works benchmark price. It is published for comparative purposes.

Prices released on Wednesdays following the 2nd and 4th Mondays of the month at 9:00 AM to Price Assessment Providers. If a price is not indicated, fewer than ten (10) price inputs were received at that time. The first price release was for April 10, 2006 for data go to [steelbenchmarker.com/files/history2.pdf](http://steelbenchmarker.com/files/history2.pdf).

For product specifications refer to last page, or go to [steelbenchmarker.com/specifications](http://steelbenchmarker.com/specifications).

## Western Europe

### Ex-works

*Dollars per Metric Tonne*

	-----HRB-----			-----CRC-----			-----Plate-----			-----Rebar-----		
	<u>Price</u>	<u>Dir</u> <u>Chng</u>	<u>Pct</u> <u>Chng</u>	<u>Price</u>	<u>Dir</u> <u>Chng</u>	<u>Pct</u> <u>Chng</u>	<u>Price</u>	<u>Dir</u> <u>Chng</u>	<u>Pct</u> <u>Chng</u>	<u>Price</u>	<u>Dir</u> <u>Chng</u>	<u>Pct</u> <u>Chng</u>
26-Jul-21	1350	-45	-3.2%	na	-	-	na	-	-	na	-	-
09-Aug-21	1360	10	0.7%	na	-	-	na	-	-	na	-	-
23-Aug-21	1330	-30	-2.2%	na	-	-	na	-	-	na	-	-
13-Sep-21	1325	-5	-0.4%	na	-	-	na	-	-	na	-	-
27-Sep-21	1249	-76	-5.7%	na	-	-	na	-	-	na	-	-
11-Oct-21	1200	-49	-3.9%	na	-	-	na	-	-	na	-	-
25-Oct-21	1190	-10	-0.8%	na	-	-	na	-	-	na	-	-
08-Nov-21	1139	-51	-4.3%	na	-	-	na	-	-	na	-	-
22-Nov-21	1100	-39	-3.4%	na	-	-	na	-	-	na	-	-
13-Dec-21	1016	-84	-7.6%	na	-	-	na	-	-	na	-	-
27-Dec-21	1045	29	2.9%	na	-	-	na	-	-	na	-	-
10-Jan-22	1040	-5	-0.5%	na	-	-	na	-	-	na	-	-
24-Jan-22	1040	0	0.0%	na	-	-	na	-	-	na	-	-
14-Feb-22	1110	70	6.7%	na	-	-	na	-	-	na	-	-
28-Feb-22	1080	-30	-2.7%	na	-	-	na	-	-	na	-	-
14-Mar-22	1450	370	34.3%	na	-	-	na	-	-	na	-	-
28-Mar-22	1550	100	6.9%	na	-	-	na	-	-	na	-	-
11-Apr-22	1469	-81	-5.2%	na	-	-	na	-	-	na	-	-
25-Apr-22	1400	-69	-4.7%	na	-	-	na	-	-	na	-	-
09-May-22	1250	-150	-10.7%	na	-	-	na	-	-	na	-	-
23-May-22	1125	-125	-10.0%	na	-	-	na	-	-	na	-	-
13-Jun-22	975	-150	-13.3%	na	-	-	na	-	-	na	-	-
27-Jun-22	868	-107	-11.0%	na	-	-	na	-	-	na	-	-
11-Jul-22	865	-3	-0.3%	na	-	-	na	-	-	na	-	-
25-Jul-22	846	-19	-2.2%	na	-	-	na	-	-	na	-	-
08-Aug-22	785	-61	-7.2%	na	-	-	na	-	-	na	-	-
22-Aug-22	715	-70	-8.9%	na	-	-	na	-	-	na	-	-
12-Sep-22	745	30	4.2%	na	-	-	na	-	-	na	-	-
26-Sep-22	734	-11	-1.5%	na	-	-	na	-	-	na	-	-
10-Oct-22	675	-59	-8.0%	na	-	-	na	-	-	na	-	-
24-Oct-22	640	-35	-5.2%	na	-	-	na	-	-	na	-	-
14-Nov-22	640	0	0.0%	na	-	-	na	-	-	na	-	-
28-Nov-22	633	-7	-1.1%	na	-	-	na	-	-	na	-	-
12-Dec-22	625	-8	-1.3%	na	-	-	na	-	-	na	-	-
26-Dec-22	720	95	15.2%	na	-	-	na	-	-	na	-	-

**Notes:**

Prices released on Wednesdays following the 2nd and 4th Mondays of the month at 9:00 AM to Price Assessment Providers. If a price is not indicated, fewer than ten (10) price inputs were received at that time. The first price release was for May 8, 2006 for data go to [steelbenchmarker.com/files/history2.pdf](http://steelbenchmarker.com/files/history2.pdf).

For product specifications refer to last page, or go to [steelbenchmarker.com/specifications](http://steelbenchmarker.com/specifications).

## Western Europe

### Ex-works

Euros per Metric Tonne

	Euro (\$/Euro)	-----HRB-----			-----CRC-----			-----Plate-----			-----Rebar-----		
		Price	Euro Chng	Pct Chng	Price	Euro Chng	Pct Chng	Price	Euro Chng	Pct Chng	Price	Euro Chng	Pct Chng
26-Jul-21	1.180	1144	-32	-3%	na	-	-	na	-	-	na	-	-
09-Aug-21	1.174	1159	15	1%	na	-	-	na	-	-	na	-	-
23-Aug-21	1.174	1133	-26	-2%	na	-	-	na	-	-	na	-	-
13-Sep-21	1.181	1122	-10	-1%	na	-	-	na	-	-	na	-	-
27-Sep-21	1.168	1069	-53	-5%	na	-	-	na	-	-	na	-	-
11-Oct-21	1.155	1039	-30	-3%	na	-	-	na	-	-	na	-	-
25-Oct-21	1.161	1025	-14	-1%	na	-	-	na	-	-	na	-	-
08-Nov-21	1.159	983	-42	-4%	na	-	-	na	-	-	na	-	-
22-Nov-21	1.123	979	-4	0%	na	-	-	na	-	-	na	-	-
13-Dec-21	1.132	898	-82	-8%	na	-	-	na	-	-	na	-	-
27-Dec-21	1.133	923	25	3%	na	-	-	na	-	-	na	-	-
10-Jan-22	1.132	918	-4	0%	na	-	-	na	-	-	na	-	-
24-Jan-22	1.132	918	0	0%	na	-	-	na	-	-	na	-	-
14-Feb-22	1.131	982	63	7%	na	-	-	na	-	-	na	-	-
28-Feb-22	1.122	963	-19	-2%	na	-	-	na	-	-	na	-	-
14-Mar-22	1.094	1326	363	38%	na	-	-	na	-	-	na	-	-
28-Mar-22	1.098	1412	86	7%	na	-	-	na	-	-	na	-	-
11-Apr-22	1.088	1350	-62	-4%	na	-	-	na	-	-	na	-	-
25-Apr-22	1.071	1307	-43	-3%	na	-	-	na	-	-	na	-	-
09-May-22	1.056	1184	-123	-9%	na	-	-	na	-	-	na	-	-
23-May-22	1.069	1052	-132	-11%	na	-	-	na	-	-	na	-	-
13-Jun-22	1.048	930	-122	-12%	na	-	-	na	-	-	na	-	-
27-Jun-22	1.058	820	-110	-12%	na	-	-	na	-	-	na	-	-
11-Jul-22	1.004	862	41	5%	na	-	-	na	-	-	na	-	-
25-Jul-22	1.022	828	-34	-4%	na	-	-	na	-	-	na	-	-
08-Aug-22	1.020	770	-58	-7%	na	-	-	na	-	-	na	-	-
22-Aug-22	1.004	712	-58	-7%	na	-	-	na	-	-	na	-	-
12-Sep-22	1.008	739	27	4%	na	-	-	na	-	-	na	-	-
26-Sep-22	0.965	761	21	3%	na	-	-	na	-	-	na	-	-
10-Oct-22	0.970	696	-65	-9%	na	-	-	na	-	-	na	-	-
24-Oct-22	0.987	648	-48	-7%	na	-	-	na	-	-	na	-	-
14-Nov-22	1.033	620	-29	-4%	na	-	-	na	-	-	na	-	-
28-Nov-22	1.034	612	-7	-1%	na	-	-	na	-	-	na	-	-
12-Dec-22	1.051	595	-18	-3%	na	-	-	na	-	-	na	-	-
26-Dec-22	1.064	677	82	14%	na	-	-	na	-	-	na	-	-

Notes:

Prices released on Wednesdays following the 2nd and 4th Mondays of the month at 9:00 AM to Price Assessment Providers. If a price is not indicated, fewer than ten (10) price inputs were received at that time. The first price release was for May 8, 2006 for data go to [steelbenchmarker.com/files/history2.pdf](http://steelbenchmarker.com/files/history2.pdf).

For product specifications refer to last page, or go to [steelbenchmarker.com/specifications](http://steelbenchmarker.com/specifications).



**World Export**  
**FOB the Port of Export**  
*Dollars per Metric Tonne*

	-----HRB-----			-----CRC-----			-----Plate-----			-----Rebar-----		
	<u>Price</u>	<u>Dir</u> <u>Chng</u>	<u>Pct</u> <u>Chng</u>	<u>Price</u>	<u>Dir</u> <u>Chng</u>	<u>Pct</u> <u>Chng</u>	<u>Price</u>	<u>Dir</u> <u>Chng</u>	<u>Pct</u> <u>Chng</u>	<u>Price</u>	<u>Dir</u> <u>Chng</u>	<u>Pct</u> <u>Chng</u>
26-Jul-21	981	-49	-4.8%	na	-	-	na	-	-	na	-	-
9-Aug-21	970	-11	-1.1%	na	-	-	na	-	-	na	-	-
23-Aug-21	943	-27	-2.8%	na	-	-	na	-	-	na	-	-
13-Sep-21	945	2	0.2%	na	-	-	na	-	-	na	-	-
27-Sep-21	911	-34	-3.6%	na	-	-	na	-	-	na	-	-
11-Oct-21	880	-31	-3.4%	na	-	-	na	-	-	na	-	-
25-Oct-21	890	10	1.1%	na	-	-	na	-	-	na	-	-
8-Nov-21	903	13	1.5%	na	-	-	na	-	-	na	-	-
22-Nov-21	900	-3	-0.3%	na	-	-	na	-	-	na	-	-
13-Dec-21	820	-80	-8.9%	na	-	-	na	-	-	na	-	-
27-Dec-21	800	-20	-2.4%	na	-	-	na	-	-	na	-	-
10-Jan-22	780	-20	-2.5%	na	-	-	na	-	-	na	-	-
24-Jan-22	800	20	2.6%	na	-	-	na	-	-	na	-	-
14-Feb-22	920	120	15.0%	na	-	-	na	-	-	na	-	-
28-Feb-22	950	30	3.3%	na	-	-	na	-	-	na	-	-
14-Mar-22	1220	270	28.4%	na	-	-	na	-	-	na	-	-
28-Mar-22	1270	50	4.1%	na	-	-	na	-	-	na	-	-
11-Apr-22	1275	5	0.4%	na	-	-	na	-	-	na	-	-
25-Apr-22	1205	-70	-5.5%	na	-	-	na	-	-	na	-	-
9-May-22	995	-210	-17.4%	na	-	-	na	-	-	na	-	-
23-May-22	878	-117	-11.8%	na	-	-	na	-	-	na	-	-
13-Jun-22	778	-100	-11.4%	na	-	-	na	-	-	na	-	-
27-Jun-22	710	-68	-8.7%	na	-	-	na	-	-	na	-	-
11-Jul-22	640	-70	-9.9%	na	-	-	na	-	-	na	-	-
25-Jul-22	620	-20	-3.1%	na	-	-	na	-	-	na	-	-
8-Aug-22	595	-25	-4.0%	na	-	-	na	-	-	na	-	-
22-Aug-22	570	-25	-4.2%	na	-	-	na	-	-	na	-	-
12-Sep-22	615	45	7.9%	na	-	-	na	-	-	na	-	-
26-Sep-22	625	10	1.6%	na	-	-	na	-	-	na	-	-
10-Oct-22	618	-7	-1.1%	na	-	-	na	-	-	na	-	-
24-Oct-22	576	-42	-6.8%	na	-	-	na	-	-	na	-	-
14-Nov-22	565	-11	-1.9%	na	-	-	na	-	-	na	-	-
28-Nov-22	554	-11	-1.9%	na	-	-	na	-	-	na	-	-
12-Dec-22	555	1	0.2%	na	-	-	na	-	-	na	-	-
26-Dec-22	605	50	9.0%	na	-	-	na	-	-	na	-	-

Notes:

Prices released on Wednesdays following the 2nd and 4th Mondays of the month at 9:00 AM to Price Assessment Providers. If a price is not indicated, fewer than ten (10) price inputs were received at that time. The first price release was for April 10, 2006 for data go to [steelbenchmarker.com/files/history2.pdf](http://steelbenchmarker.com/files/history2.pdf).

For product specifications refer to last page, or go to [steelbenchmarker.com/specifications](http://steelbenchmarker.com/specifications).

## Spot Market New Booking Prices for Near-Term Delivery Commodity-grade product to mid-sized buyers

(Dollars per Metric Tonne, 500 to 2,000 tonnes transaction size)

### USA Market East of the Mississippi

FOB mill
<b>Hot-rolled band *</b> (0.2" thick x 48-60" wide)
<b>Cold-rolled coil *</b> (0.03" x 48-60" wide)
<b>Rebar #5 *</b> (5/8" in diameter)
<b>Standard plate *</b> (1" x 96" x 240")
<b>Steel scrap **</b> #1 Heavy melting Shredded - all but West Coast #1 Busheling

### Western Europe Market Germany/France

Ex-works
<b>Hot-rolled band *</b> (5mm thick x 1200-1500mm wide)
<b>Cold-rolled coil *</b> (0.7mm x 1200-1500mm wide)
<b>Rebar #5 *</b> (16mm in diameter)
<b>Standard plate *</b> (24mm x 2400mm x 6000mm)

### Chinese Market Home Market

Ex-works
<b>Hot-rolled band *</b> (5mm thick x 1200-1500mm wide)
<b>Cold-rolled coil *</b> (0.7mm x 1200-1500mm wide)
<b>Rebar #5 *</b> (16mm in diameter)
<b>Standard plate *</b> (24mm x 2400mm x 6000mm)

### World Export Market Atlantic and Pacific Basin

FOB port of export
<b>Hot-rolled band ***</b> (5mm thick x 1200-1500mm wide)
<b>Cold-rolled coil ***</b> (0.7mm x 1200-1500mm wide)
<b>Rebar #5 ***</b> (16mm in diameter)
<b>Standard plate ***</b> (24mm x 2400mm x 6000mm)

Note: Near-term delivery is normally two to six weeks.

Hot-rolled band is the first product off the hot strip mill with: (1) a thickness of about 0.20 inch (but no less than 0.10 inch or more than 0.50 inch); (2) a coil size of 10 to 20 tons; (3) a width of 48 to 60 inches; and (4) a carbon component of 0.08% to 0.13%.

SteelHome's average price for each product is the determinant of the Chinese ex-works benchmark price. It is published for comparative purposes.

\* Ex-works (the same as FOB mill).

\*\* Steel scrap delivered to steel plant on a near-term basis, normally from two days to a month.

#1 heavy melting – demolition scrap that is at least ¼" thick and surface dimension no larger than 60 by 24 inches. This grade does not include the heavy "p & s" (plate and structural) category that includes the very thick scrap items.

Shredded – largely old cars and some appliances – for all but the West Coast (California, Oregon and Washington).

Shredded scrap is homogeneous iron and steel scrap magnetically separated, no. 1, no. 2 steel, miscellaneous bailing and sheet scrap with an average weight from 50 to 70 pounds per square foot.

#1 busheling – new sheet steel scrap.

\*\*\* FOB port of export