

GENERAL SOCIAL SURVEY 2012

FINAL REPORT

Trends in Public Attitudes about Sexual Morality

APRIL 2013

PRESENTED BY:

NORC at the
University of Chicago
55 East Monroe Street
30th Floor
Chicago, IL 60603
(312) 759-4000
(312) 759-4004

Tom W. Smith and Jaesok Son



at the UNIVERSITY *of* CHICAGO

Trends in Public Attitudes about Sexual Morality

Tom W. Smith and Jaesok Son
April, 2013

Attitudes towards sexual morality have been changing in complex ways over the last four decades. As Figure 1 illustrates, disapproval of premarital sex has declined from 34.2% in 1972 saying it was always wrong to a record low of 21% in 2010 and 2012. (For the wording of this and all other questions see Appendix 1: Question Wordings. For full percentages for all years, see the attached tables.) But in contrast, two-thirds say it is always wrong for teenagers 14-16 to have sex and that level of disapproval was unchanged between 1986 and 2012. Judgments about same-gender sex became less accepting between 1974 and 1987 with the percent saying it was always wrong rising from 66.1% to 75.6%. Then the trend reversed and by 2012 a record low of 43.4% thought homosexual sex was always wrong. Finally, approval of extramarital sex has declined from an average of 70.5% saying it was always wrong in 1973-1980 to a high of 83.3% saying so in 2008. In 2012, 80.8% said extramarital sex was always wrong. In sum, public attitudes towards these four sexual behaviors show distinct levels and different trends. Disapproval of premarital sex is low and declining, for teen sex disapproval is high and shows little change, for homosexual sex disapproval first rose, then markedly declined, and for extramarital sex disapproval is high and increasing (Figures 1 and 2).

Attitudes towards homosexuality have shown the most change over the last four decades (Figure 3). As noted above, those saying homosexual sex was always wrong fell from 75.6% in 1987 to 43.4% in 2012. Also, approval of same-sex marriage rose from 10.9% in 1988 to a record high of 48.4% in 2012. But even in 2012, the public remains very divided in its views of homosexuality. In 2012, 43.4% said homosexual sex was always wrong and 41.6% thought it was not wrong at all. Only 10.0% were in the middle saying it was either almost always wrong or wrong only sometimes. Thus 85% are at opposite ends and with just 10% in the middle and 5% saying they don't know. On gay marriage in 2012, a plurality of 48.4% approve, but 38.7% disapprove and 13.0% neither approve nor disapprove or are unsure.

Regarding access to sexually-explicit material, support for allowing pornography to be legally available to adults rose from 57.3% in 1973 to a high of 68.6% in 2010 and was at 66.6% in 2012 (Figure 4). Likewise, the viewing of X-rated movies in the last year increased from a low of 15.6% in 1978-1980 to a high of 27.1% in 1996 (Figure 5). Viewing has since remained near that level through 2012 when it was at 24.6%. It is likely that the increase in viewing sexual depictions has been even greater when Internet

access is considered. In 2000-2004, 12% of Internet users reported viewing “sexually-explicit material” on a website within the last 30 days.

Attitudes relating to teenage sexual activity have changed little (Figure 1). As noted above, in both 1986 and 2012, 66% said sex between 14-16 year olds was always wrong. Approval of allowing 14-16 year olds to have access to contraceptives without parental consent has also not changed appreciably with 56.0% approving in 1986 and 56.6% in 2012 (Figure 6). However, support for sex education in public schools has increased from an average of 77.7% in the 1970s to an average of 89.6% in 2008-2012 (Figure 7). Thus, majorities oppose teenage sex, but majorities also prefer that teenagers have access to contraceptives (even without parental consent) and are educated about sex.

Overall, there has been an increase in sexually-permissive attitudes over the last four decades on most issues with more approval of premarital sex, same-gender sex, gay marriage, sex education, and legal access to pornography and greater viewing of X-rated movies. But there has been no meaningful shift in attitudes toward teenage sex and contraceptive access and disapproval of extramarital sex has risen.

Women generally have less sexually-permissive attitudes than men have. They are less likely to approve of premarital sex, teenage sex, extramarital sex, and legal access to pornography and are less likely to have viewed an X-rated movie. But men and women differ little on approval of sex education and men are less approving than women are of same-gender sex, gay marriage, and teenage access to contraceptives. While varying somewhat year-to-year, these gender differences have generally prevailed over time.

With few exceptions younger adults have more sexually-permissive attitudes than members of older generations. Comparing those under 35 to those 65+, the permissiveness gap (i.e. the percentage holding a more permissive attitude among those less than 35 – the percentage among those 65+) is large. The 2012 differences are + 34.1 percentage points on seeing an X-rated movie, +32.4 on legalizing pornography, +31.2 on same-gender sex, +31.1 on teen sex, +26.6 on gay marriage, +21.3 on teen contraceptives, +20.8 on premarital sex, +10.7 on sex education, and -0.9 extramarital sex. If these generational gaps represent cohort difference, the positive scores indicate that cohort turnover will continue to move sexual morality in a permissive direction. Correspondingly, the absence of any generational differences on attitudes toward infidelity is one of the main reasons for there being no permissive shift over time on this issue since cohort turnover is not pushing society in a permissive direction.

Greater education is generally associated with more sexually-permissive attitudes. The differences are usually smaller than the generational gaps. Also, on a number of items the middle category (those with a

high school degree) are the most or least permissive rather than showing a monotonic change from low to high on education. The largest educational differences occur on attitudes toward homosexuality. The college educated are much less likely to say that homosexual sex is always wrong and much more likely to approve of gay marriage. In 2012, 56.8% of those with a high school degree, 46.4% of high school grads, and 33.9% of college grads said homosexual sex was always wrong. That represents a permissiveness gap of +22.9 percentage points ($56.8\% - 33.9\% = +22.9$ points). Also, in 2012, gay marriage was approved of by 30.9% of those without a degree, 48.1% of high school grads, and 55.7% of college grads or +24.8 points. The college educated were also somewhat more permissive of premarital sex and extramarital sex than those with no degrees (in 2012, respectively by +12.6 points and 12.1 points). There were little educational differences on attitudes towards teenage sex and contraceptives (in 2012 respectively +2.3 points and - 2.0 points). The college and high school educated are however more likely than those without degrees to favor sex education in the schools (+10.6 points). The difference on the legalization of pornography and the viewing of X-rated movies were also small (in 2012 respectively +4.9 points and +2.1 points) and those with high school degrees were the most permissive on these items.

The data in this report are from the General Social Survey. The GSSs are full probability, in-person samples of adults living in households in the United States. Data have been collected by NORC at the University of Chicago. Core support for the GSS comes from the National Science Foundation. Information on the GSS and the GSS data files are available at <http://www.norc.org/GSS+Website>.

Appendix 1: Question Wordings

There's been a lot of discussion about the way morals and attitudes about sex are changing in this country. If a man and woman have sex relations before marriage, do you think that it is always wrong, almost always wrong, wrong only sometimes, or not wrong at all?

What if they are in their early teens, say 14 to 16 years old? In that case, do you think sex relations before marriage are always wrong, almost always wrong, wrong only sometimes, or not wrong at all?

What is your opinion about a married person having sexual relations with someone other than the marriage partner... is it always wrong, almost always wrong, wrong only sometimes, or not wrong at all?

What about sexual relations between two adults of the same sex... do you think it is always wrong, almost always wrong, wrong only sometimes, or not wrong at all?

Do you agree or disagree?

Homosexual couples should have the right to marry one another?

Strongly Agree/Agree/Neither Agree nor Disagree/Disagree/Strongly Disagree

Do you strongly agree, agree, disagree, or strongly disagree that methods of birth control should be available to teenagers between the ages of 14 and 16 if their parents do not approve?

Would you be for or against sex education in the public schools?

Which of these statements comes closest to your feelings about pornography laws?

There should be laws against the distribution of pornography whatever the age.

There should be laws against the distribution of pornography to people under 18.

There should be no laws forbidding the distribution of pornography.

Have you seen an X-rated movie in the last year?

In the past 30 days, how often have you visited a website for sexually explicit material? (Asked only of Internet users.)

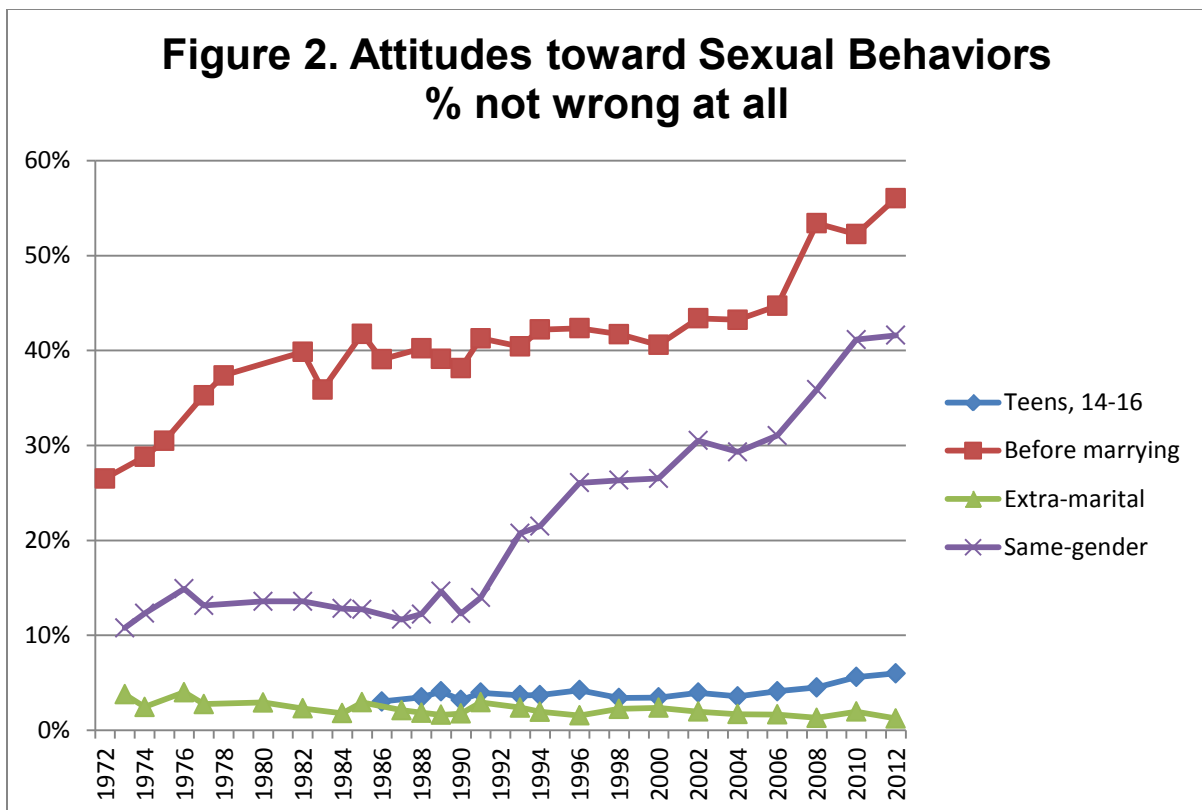
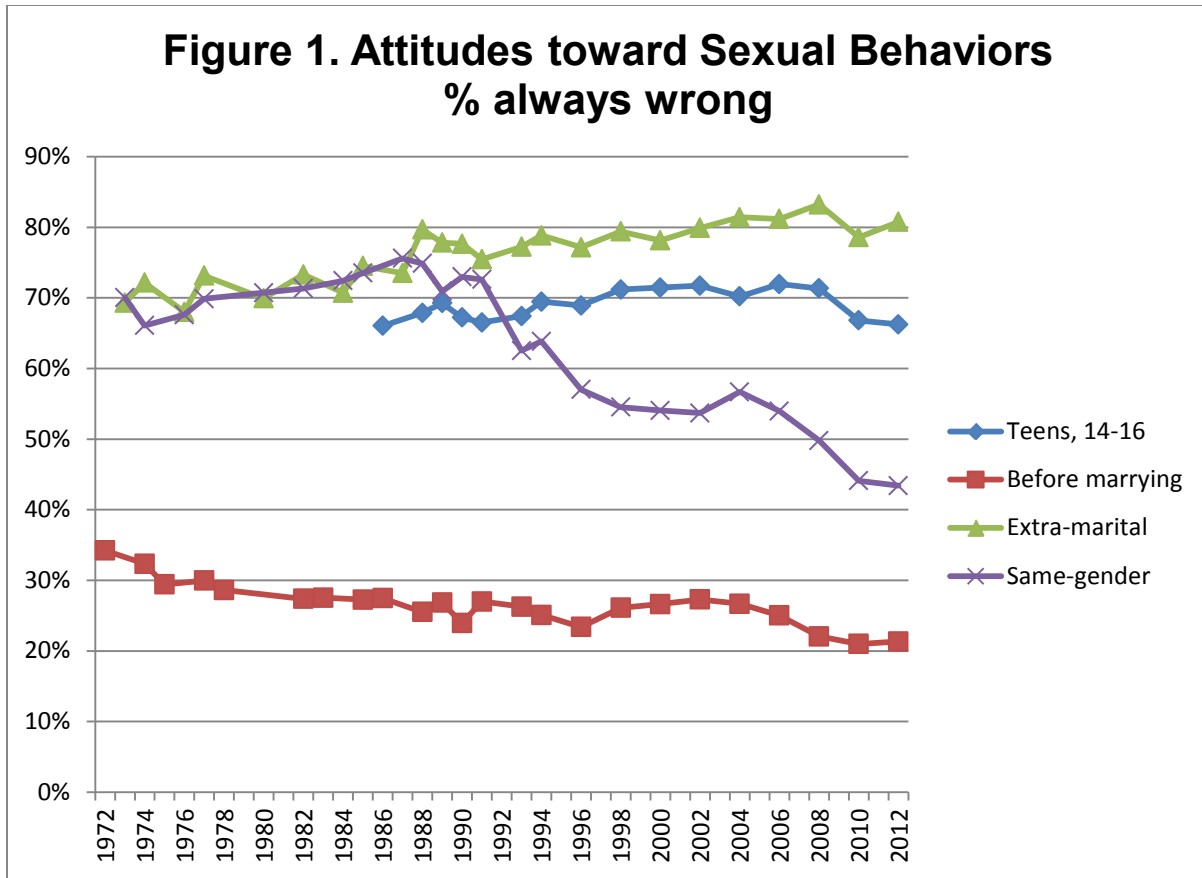


Figure 3. Same-Gender Sexual Attitudes

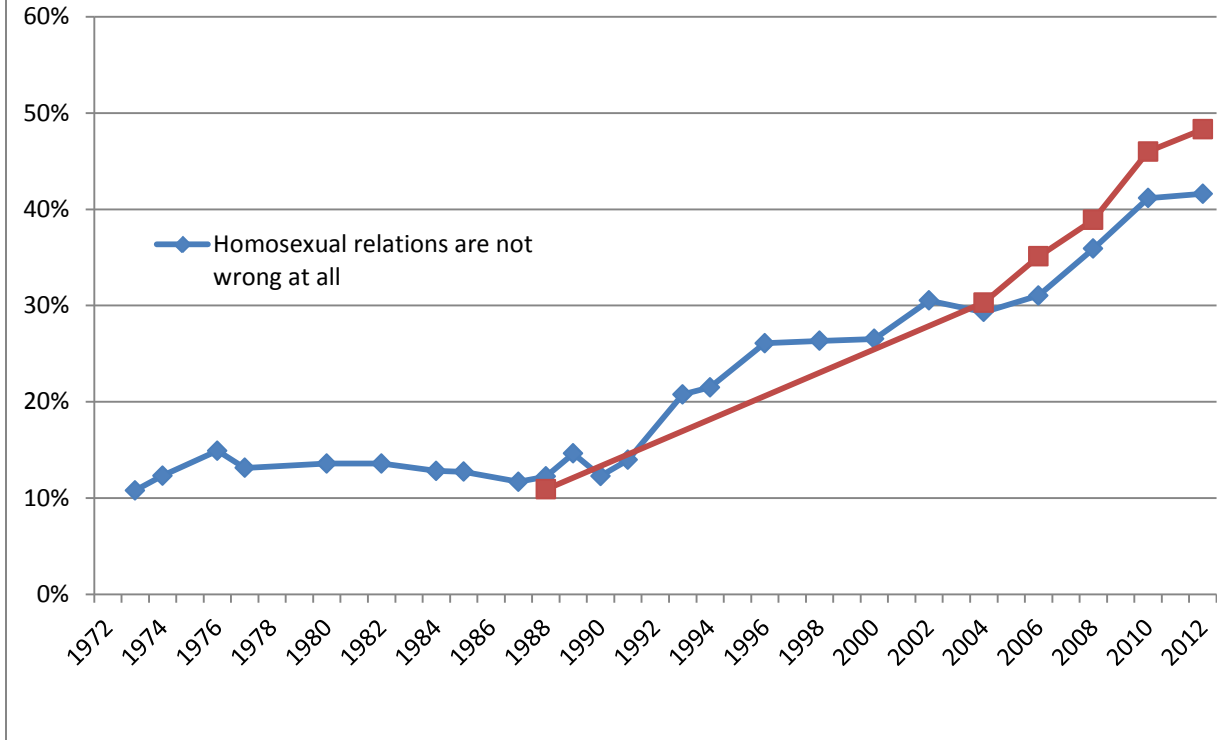
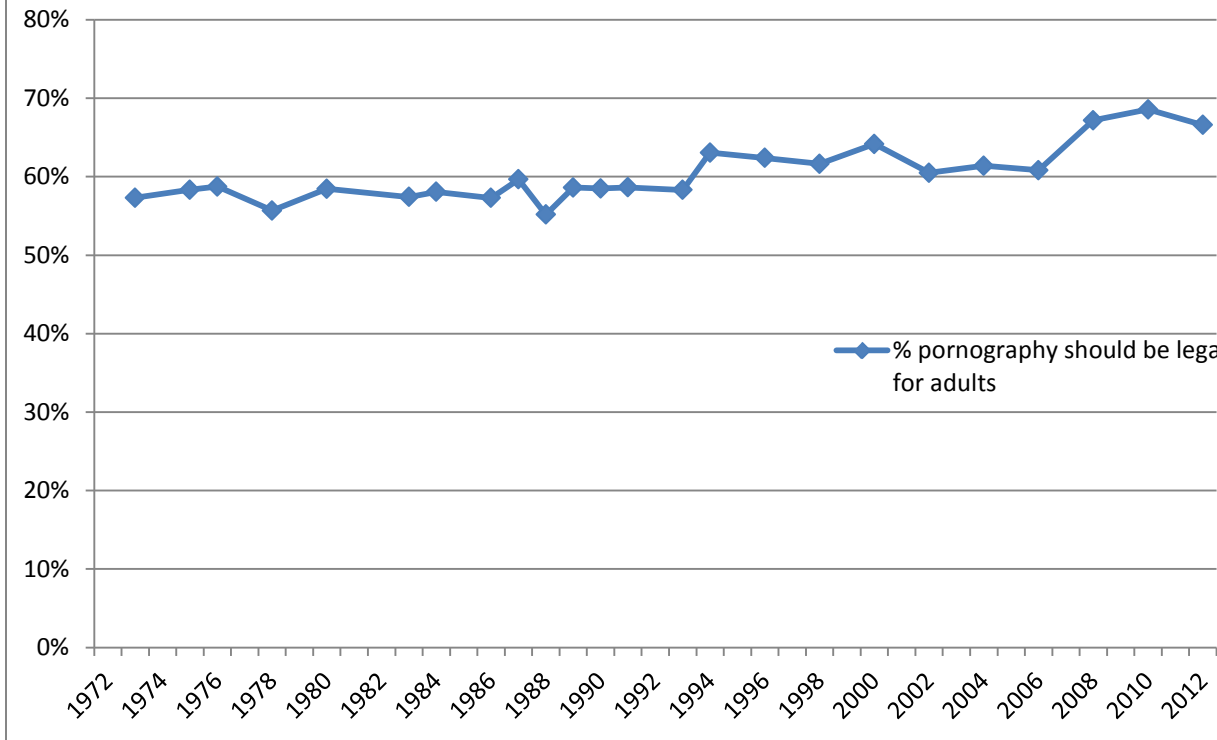
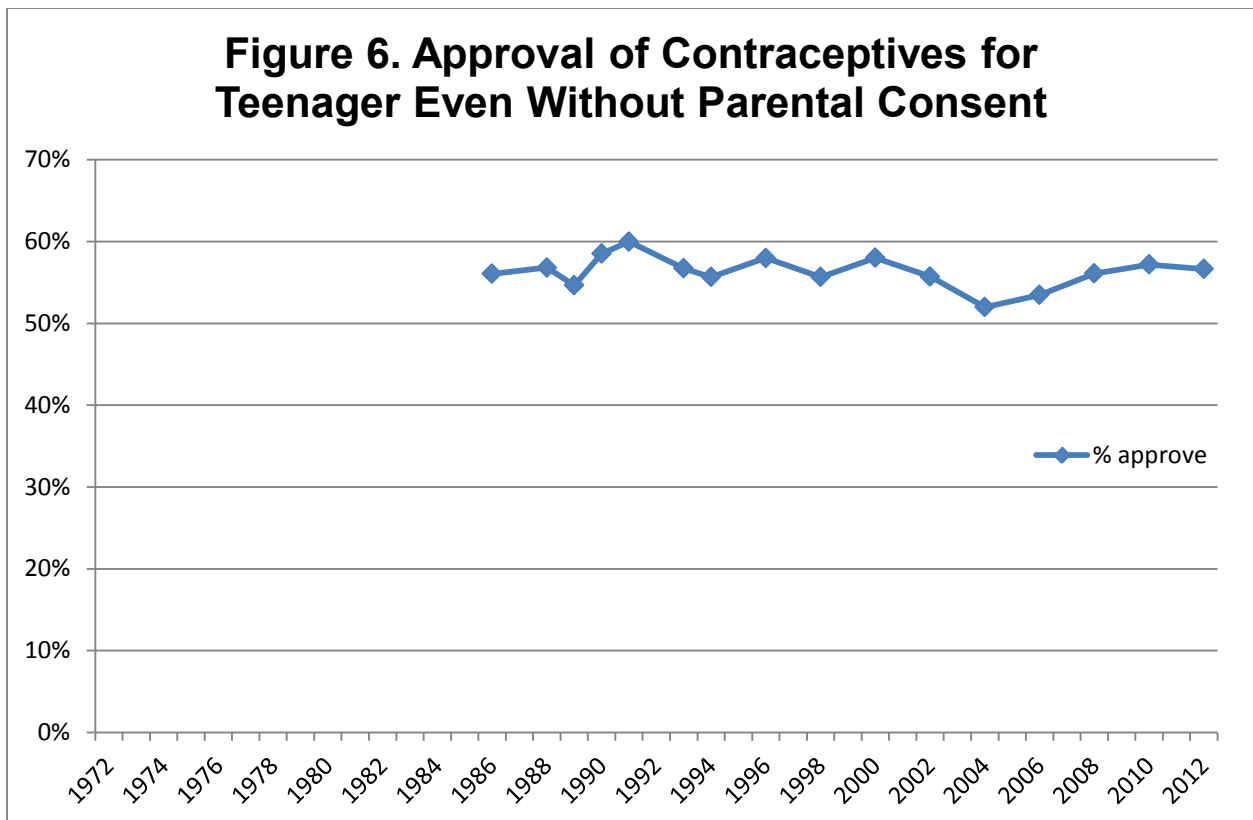
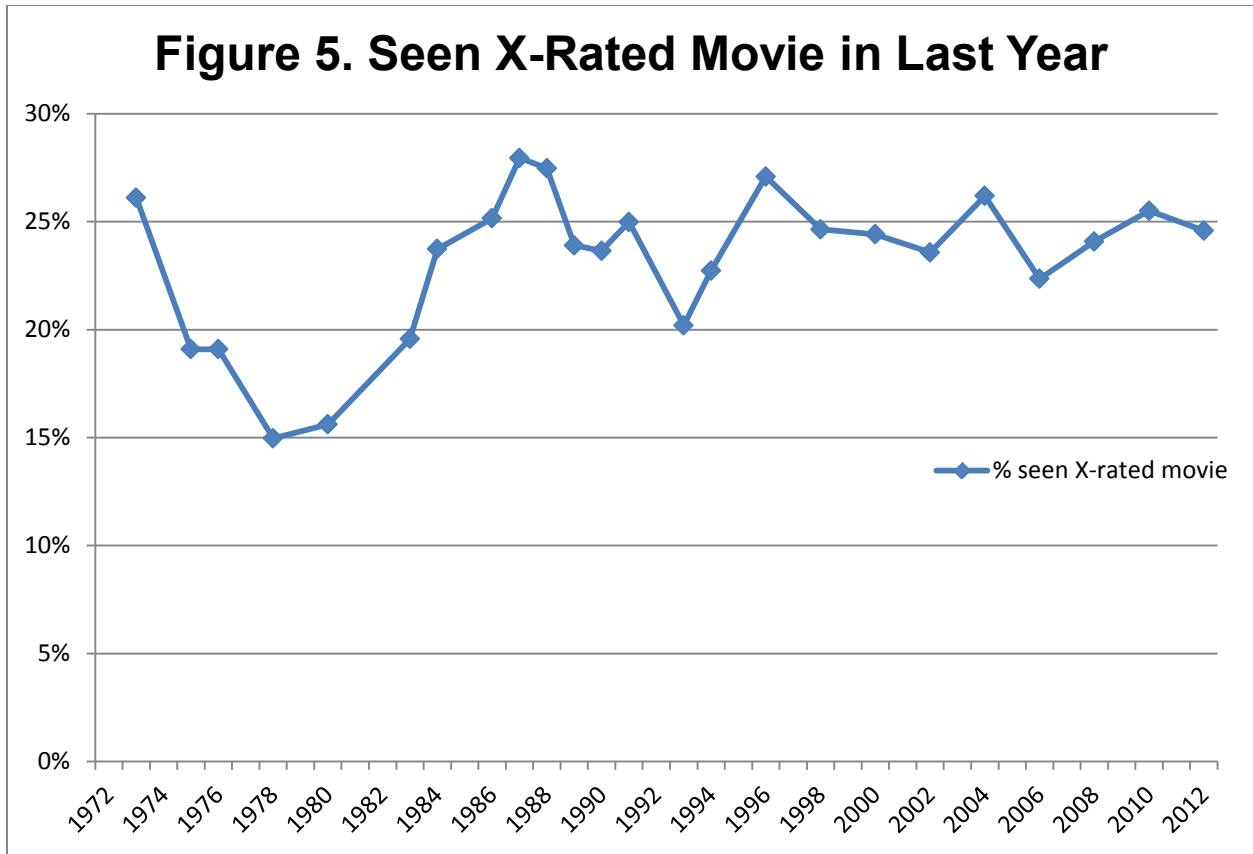
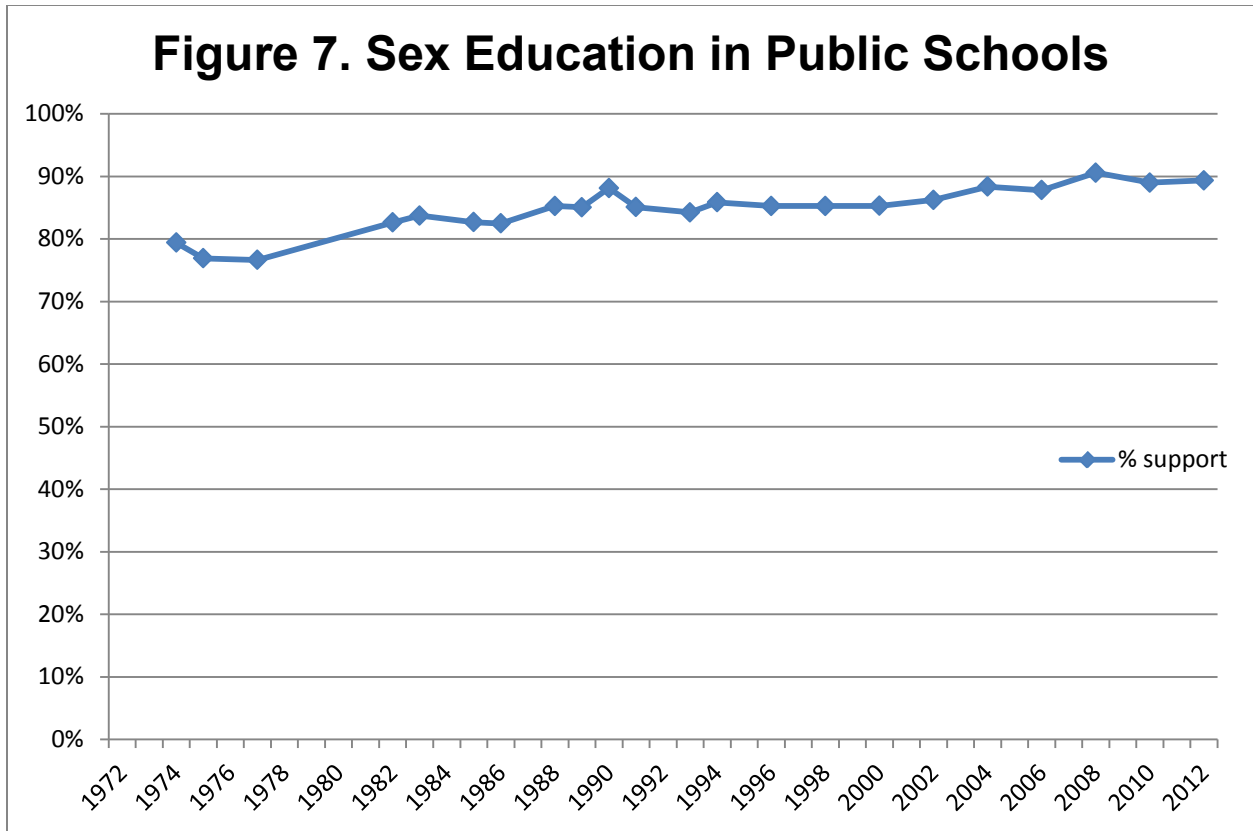


Figure 4. Attitude toward Pornography







SEX BEFORE MARRIAGE – TEENS 14-16

SURVEY YEAR	ALWAYS WRONG	ALMST ALWAYS WRG	SOMETIMES WRONG	NOT WRONG AT ALL	DK	Total
1986	66.0%	18.6%	10.7%	3.0%	1.6%	1467
1988	67.9%	16.3%	11.5%	3.5%	.9%	981
1989	69.3%	16.3%	9.1%	4.1%	1.3%	1014
1990	67.2%	16.3%	10.6%	3.2%	2.7%	937
1991	66.5%	18.7%	8.8%	4.0%	2.1%	1007
1993	67.4%	17.8%	9.6%	3.7%	1.5%	1078
1994	69.5%	17.4%	8.6%	3.7%	.8%	1958
1996	68.9%	15.7%	10.0%	4.2%	1.2%	1971
1998	71.2%	15.9%	8.0%	3.4%	1.5%	1882
2000	71.5%	14.9%	9.1%	3.4%	1.1%	1867
2002	71.7%	14.3%	8.5%	4.0%	1.5%	902
2004	70.2%	15.1%	10.1%	3.6%	1.0%	900
2006	72.0%	14.8%	8.2%	4.1%	.9%	1987
2008	71.4%	15.5%	8.0%	4.5%	.6%	1336
2010	66.8%	15.4%	11.6%	5.6%	.6%	1428
2012	66.3%	15.0%	11.8%	6.0%	1.0%	1310

SEX BEFORE MARRIAGE

SURVEY YEAR	ALWAYS WRONG	ALMST ALWAYS WRG	SOMETIMES WRONG	NOT WRONG AT ALL	DK	Total
1972	34.2%	10.9%	24.1%	26.5%	4.3%	1602
1974	32.3%	12.5%	23.2%	28.8%	3.2%	1477
1975	29.4%	12.0%	24.2%	30.5%	3.9%	1486
1977	30.0%	9.6%	22.4%	35.3%	2.8%	1521
1978	28.6%	12.0%	19.9%	37.4%	2.1%	1528
1982	27.4%	8.6%	21.2%	39.8%	3.0%	1502
1983	27.5%	10.5%	24.1%	35.9%	2.0%	1590
1985	27.3%	8.7%	19.4%	41.8%	2.9%	1530
1986	27.5%	8.6%	22.1%	39.1%	2.8%	1465
1988	25.5%	9.9%	21.6%	40.2%	2.8%	979
1989	26.8%	8.6%	22.4%	39.1%	3.1%	1013
1990	23.9%	10.9%	23.7%	38.2%	3.3%	937
1991	27.0%	10.0%	19.1%	41.3%	2.6%	1011
1993	26.3%	9.8%	21.3%	40.4%	2.3%	1079
1994	25.1%	9.8%	19.9%	42.2%	3.0%	1957
1996	23.4%	9.5%	22.0%	42.3%	2.8%	1966
1998	26.1%	8.4%	20.4%	41.7%	3.3%	1883
2000	26.6%	8.3%	20.6%	40.6%	3.9%	1865
2002	27.3%	8.1%	19.6%	43.4%	1.7%	900
2004	26.7%	9.4%	18.6%	43.2%	2.0%	896
2006	25.0%	8.8%	19.4%	44.7%	2.1%	1982
2008	22.0%	7.0%	15.0%	53.4%	2.6%	1334
2010	21.0%	7.7%	17.5%	52.3%	1.5%	1426
2012	21.3%	5.0%	15.1%	56.0%	2.6%	1301

SEX WITH PERSON OTHER THAN SPOUSE

SURVEY YEAR	ALWAYS WRONG	ALMST ALWAYS WRG	SOMETIMES WRONG	NOT WRONG AT ALL	DK	Total
1973	69.3%	14.7%	11.6%	3.8%	.6%	1500
1974	72.2%	12.4%	11.7%	2.5%	1.4%	1483
1976	68.0%	16.4%	10.6%	4.0%	1.0%	1495
1977	73.2%	13.4%	9.8%	2.8%	.9%	1523
1980	69.9%	16.2%	9.5%	2.9%	1.5%	1468
1982	73.3%	13.5%	9.6%	2.3%	1.2%	1500
1984	70.7%	17.8%	8.6%	1.8%	1.1%	1465
1985	74.5%	13.1%	8.3%	2.9%	1.2%	1531
1987	73.5%	16.0%	7.3%	2.1%	1.0%	1461
1988	79.7%	12.2%	5.0%	1.8%	1.3%	979
1989	77.8%	12.2%	7.5%	1.6%	.9%	1035
1990	77.7%	12.3%	6.6%	1.8%	1.7%	906
1991	75.5%	13.2%	6.1%	2.9%	2.3%	991
1993	77.2%	13.6%	5.1%	2.4%	1.6%	1061
1994	78.8%	12.2%	5.9%	2.0%	1.1%	2024
1996	77.2%	14.7%	4.9%	1.6%	1.6%	1914
1998	79.4%	11.6%	5.4%	2.2%	1.4%	1887
2000	78.1%	10.7%	7.2%	2.4%	1.6%	1857
2002	79.9%	12.4%	4.1%	2.0%	1.7%	936
2004	81.4%	11.5%	4.6%	1.7%	.8%	875
2006	81.2%	10.8%	5.3%	1.7%	1.1%	1987
2008	83.3%	9.0%	5.3%	1.3%	1.1%	1352
2010	78.6%	12.2%	6.3%	2.0%	.9%	1273
2012	80.8%	11.1%	5.6%	1.2%	1.3%	1300

HOMOSEXUAL SEX RELATIONS

SURVEY YEAR	ALWAYS WRONG	ALMST ALWAYS WRG	SOMETIMES WRONG	NOT WRONG AT ALL	OTHER	DK	Total
1973	70.0%	6.5%	7.4%	10.8%	1.9%	3.4%	1497
1974	66.1%	5.3%	8.1%	12.3%	3.4%	4.8%	1484
1976	67.6%	6.1%	7.6%	14.9%	0.0%	3.8%	1488
1977	69.9%	5.6%	7.2%	13.1%	0.0%	4.2%	1520
1980	70.7%	5.8%	5.7%	13.6%	0.0%	4.2%	1465
1982	71.3%	4.8%	6.3%	13.6%	0.0%	4.0%	1498
1984	72.4%	4.4%	6.8%	12.8%	0.0%	3.6%	1467
1985	73.5%	4.1%	6.8%	12.7%	0.0%	2.8%	1531
1987	75.6%	4.1%	6.2%	11.7%	0.0%	2.5%	1454
1988	74.9%	4.3%	5.3%	12.2%	0.0%	3.3%	977
1989	70.9%	3.8%	6.0%	14.6%	0.0%	4.6%	1033
1990	73.0%	4.7%	5.5%	12.3%	0.0%	4.5%	908
1991	72.6%	3.5%	3.8%	14.0%	0.0%	6.1%	989
1993	62.5%	4.0%	7.3%	20.8%	0.0%	5.4%	1059
1994	63.8%	3.5%	5.5%	21.5%	0.0%	5.6%	2022
1996	57.0%	4.8%	5.6%	26.1%	0.0%	6.5%	1902
1998	54.5%	5.5%	6.8%	26.3%	0.0%	6.8%	1884
2000	54.1%	4.1%	7.4%	26.5%	0.0%	7.9%	1853
2002	53.7%	5.0%	7.1%	30.5%	0.0%	3.8%	932
2004	56.7%	4.7%	6.7%	29.3%	0.0%	2.5%	871
2006	54.0%	4.7%	6.4%	31.0%	0.0%	3.9%	1975
2008	49.8%	2.9%	6.3%	35.9%	0.0%	5.1%	1341
2010	44.1%	3.5%	7.6%	41.2%	0.0%	3.6%	1261
2012	43.4%	2.7%	7.3%	41.6%	0.0%	5.0%	1290

HOMOSEXUALS SHOULD HAVE RIGHT TO MARRY

SURVEY YEAR	STRONGLY AGREE	AGREE	NEITHER AGREE NOR DISAGREE	DISAGREE	STRONGLY DISAGREE	CANT CHOOSE	Total
1988	2.6%	8.3%	14.2%	24.5%	44.4%	6.1%	1392
2004	11.7%	18.6%	13.7%	20.0%	34.2%	1.8%	1205
2006	15.0%	20.1%	13.4%	15.7%	35.1%	.7%	1990
2008	15.2%	23.6%	12.9%	15.5%	31.9%	.9%	1356
2010	20.8%	25.1%	12.7%	15.4%	24.8%	1.1%	1275
2012	24.9%	23.5%	11.9%	14.0%	24.7%	1.1%	1297

BIRTH CONTROL TO TEENAGERS 14-16

SURVEY YEAR	STRONGLY AGREE	AGREE	DISAGREE	STRONGLY DISAGREE	DK	Total
1986	22.3%	33.7%	24.8%	16.8%	2.3%	1465
1988	27.1%	29.7%	22.3%	16.7%	4.2%	983
1989	27.0%	27.6%	23.7%	19.5%	2.2%	1015
1990	27.5%	31.0%	23.0%	14.7%	3.8%	942
1991	26.3%	33.7%	19.8%	17.9%	2.3%	1013
1993	26.3%	30.4%	22.5%	17.8%	3.0%	1075
1994	25.9%	29.7%	21.3%	20.7%	2.4%	1954
1996	28.6%	29.4%	20.8%	18.3%	3.0%	1970
1998	25.8%	29.8%	20.3%	20.6%	3.5%	1882
2000	28.0%	30.0%	19.4%	20.3%	2.2%	1868
2002	30.1%	25.6%	19.3%	23.1%	1.9%	902
2004	22.8%	29.2%	24.7%	21.2%	2.1%	900
2006	24.9%	28.6%	24.1%	21.0%	1.5%	1988
2008	22.8%	33.3%	21.1%	21.2%	1.6%	639
2010	23.7%	33.4%	25.1%	16.2%	1.5%	1430
2012	23.6%	33.0%	24.6%	16.7%	2.0%	1309

SEX EDUCATION IN PUBLIC SCHOOLS

SURVEY YEAR	FAVOR	OPPOSE	DK	Total
1974	79.4%	16.8%	3.8%	1427
1975	76.9%	19.5%	3.6%	1435
1977	76.7%	21.1%	2.3%	1491
1982	82.6%	14.5%	2.9%	1461
1983	83.7%	13.6%	2.7%	1552
1985	82.7%	14.8%	2.5%	1489
1986	82.5%	14.8%	2.7%	1428
1988	85.3%	12.0%	2.7%	954
1989	85.0%	11.9%	3.0%	984
1990	88.1%	9.7%	2.2%	919
1991	85.1%	12.1%	2.8%	984
1993	84.2%	13.3%	2.5%	1052
1994	85.8%	11.7%	2.5%	1906
1996	85.2%	12.3%	2.4%	1919
1998	85.2%	12.7%	2.1%	1840
2000	85.3%	12.6%	2.2%	1824
2002	86.2%	11.9%	1.9%	886
2004	88.3%	10.4%	1.3%	886
2006	87.8%	10.7%	1.5%	1959
2008	90.6%	8.0%	1.4%	1319
2010	89.0%	10.1%	.9%	1414
2012	89.3%	8.9%	1.7%	1286

FEELINGS ABOUT PORNOGRAPHY LAWS

SURVEY YEAR	ILLEGAL TO ALL	ILLEGAL UNDER 18	LEGAL	DK	Total
1973	40.9%	47.8%	9.5%	1.8%	1497
1975	40.2%	47.5%	10.9%	1.4%	1489
1976	39.4%	50.7%	8.0%	1.9%	1497
1978	43.5%	48.3%	7.3%	.8%	1531
1980	39.7%	52.4%	6.1%	1.8%	1468
1983	41.4%	52.6%	4.8%	1.2%	1594
1984	40.8%	54.3%	3.8%	1.1%	1464
1986	41.7%	54.1%	3.2%	1.0%	1469
1987	39.2%	55.6%	4.1%	1.1%	1463
1988	43.0%	50.2%	5.0%	1.9%	996
1989	40.3%	54.0%	4.6%	1.1%	1019
1990	40.1%	53.1%	5.4%	1.4%	892
1991	39.9%	54.4%	4.3%	1.4%	1020
1993	40.2%	55.0%	3.3%	1.4%	1062
1994	36.2%	60.1%	3.0%	.7%	1978
1996	36.6%	58.7%	3.7%	1.0%	1915
1998	37.4%	58.0%	3.6%	.9%	1882
2000	34.9%	61.1%	3.1%	1.0%	1883
2002	38.8%	56.0%	4.5%	.7%	890
2004	38.2%	57.4%	4.0%	.4%	877
2006	38.3%	57.6%	3.2%	.8%	2000
2008	32.4%	63.8%	3.4%	.4%	1349
2010	30.7%	64.5%	4.1%	.8%	1376
2012	32.5%	63.4%	3.2%	.9%	1328

SEEN X-RATED MOVIE IN LAST YEAR

SURVEY YEAR	YES	NO	DK	Total
1973	26.1%	73.2%	.7%	1501
1975	19.1%	80.4%	.5%	1489
1976	19.1%	80.7%	.2%	1495
1978	15.0%	84.5%	.5%	1532
1980	15.6%	84.0%	.3%	1467
1983	19.6%	80.0%	.4%	1595
1984	23.7%	76.1%	.1%	1467
1986	25.2%	74.5%	.3%	1465
1987	28.0%	71.7%	.3%	1462
1988	27.5%	72.0%	.5%	998
1989	23.9%	75.4%	.7%	1017
1990	23.7%	76.0%	.4%	889
1991	25.0%	74.9%	.2%	1018
1993	20.2%	79.5%	.3%	1062
1994	22.7%	77.0%	.3%	1484
1996	27.1%	72.4%	.5%	1913
1998	24.6%	74.8%	.6%	1883
2000	24.4%	75.3%	.3%	1889
2002	23.6%	76.4%	.1%	892
2004	26.2%	73.8%	0.0%	879
2006	22.4%	77.4%	.2%	1999
2008	24.1%	75.5%	.4%	1346
2010	25.5%	74.2%	.3%	1374
2012	24.6%	75.1%	.3%	1330

SEX BEFORE MARRIAGE – TEENS 14-16

SURVEY YEAR	SEX	ALWAYS WRONG	ALMST ALWAYS WRG	SOMETIME S WRONG	NOT WRONG AT ALL	DK	Total
1986	MALE	61.2%	18.5%	13.1%	4.8%	2.4%	646
	FEMALE	69.9%	18.8%	8.8%	1.6%	1.0%	821
1988	MALE	63.6%	18.4%	12.4%	4.4%	1.2%	454
	FEMALE	71.5%	14.4%	10.7%	2.6%	.7%	527
1989	MALE	61.8%	19.8%	12.4%	4.1%	1.9%	460
	FEMALE	75.5%	13.4%	6.4%	4.1%	.7%	554
1990	MALE	61.5%	18.8%	12.4%	4.8%	2.5%	421
	FEMALE	71.9%	14.3%	9.2%	1.9%	2.8%	516
1991	MALE	60.6%	19.5%	10.9%	6.5%	2.6%	435
	FEMALE	71.0%	18.0%	7.1%	2.0%	1.8%	572
1993	MALE	62.3%	19.0%	12.4%	4.4%	1.9%	493
	FEMALE	71.8%	16.7%	7.2%	3.1%	1.2%	585
1994	MALE	63.8%	18.4%	10.9%	5.3%	1.6%	845
	FEMALE	73.8%	16.6%	6.9%	2.5%	.2%	1113
1996	MALE	65.2%	15.2%	13.1%	5.0%	1.4%	923
	FEMALE	72.2%	16.1%	7.3%	3.5%	.9%	1048
1998	MALE	66.2%	16.9%	9.8%	5.2%	1.8%	842
	FEMALE	75.2%	15.1%	6.6%	1.9%	1.2%	1040
2000	MALE	66.9%	16.8%	10.4%	4.8%	1.1%	817
	FEMALE	75.0%	13.4%	8.1%	2.4%	1.2%	1050
2002	MALE	65.2%	15.9%	11.3%	6.0%	1.6%	410
	FEMALE	77.2%	12.9%	6.2%	2.3%	1.4%	492
2004	MALE	65.6%	16.6%	11.9%	5.0%	.9%	425
	FEMALE	74.3%	13.7%	8.5%	2.3%	1.2%	475
2006	MALE	69.2%	15.6%	9.0%	5.5%	.6%	897
	FEMALE	74.2%	14.1%	7.5%	2.9%	1.2%	1091
2008	MALE	65.9%	17.9%	9.0%	6.7%	.5%	641
	FEMALE	76.4%	13.2%	7.1%	2.5%	.7%	695
2010	MALE	60.0%	16.9%	14.5%	7.3%	1.3%	625
	FEMALE	72.1%	14.2%	9.4%	4.3%	.1%	803
2012	MALE	62.5%	16.4%	13.8%	6.4%	.8%	615
	FEMALE	69.5%	13.7%	10.0%	5.6%	1.2%	696

SEX BEFORE MARRIAGE

SURVEY YEAR	SEX	ALWAYS WRONG	ALMST ALWAYS WRG	SOMETIMES WRONG	NOT WRONG AT ALL	DK	Total
1972	MALE	28.5%	10.8%	23.9%	33.5%	3.4%	846
	FEMALE	40.6%	11.0%	24.3%	18.7%	5.3%	757
1974	MALE	29.9%	11.2%	22.2%	33.3%	3.5%	712
	FEMALE	34.7%	13.8%	24.1%	24.7%	2.9%	765
1975	MALE	25.7%	9.6%	23.6%	36.8%	4.2%	694
	FEMALE	32.7%	14.0%	24.8%	25.0%	3.6%	792
1977	MALE	23.0%	9.2%	22.4%	42.4%	2.9%	707
	FEMALE	36.0%	10.0%	22.3%	29.1%	2.6%	814
1978	MALE	23.1%	12.3%	19.6%	42.7%	2.3%	661
	FEMALE	32.8%	11.9%	20.1%	33.3%	1.9%	867
1982	MALE	23.0%	7.4%	21.5%	44.6%	3.5%	671
	FEMALE	30.9%	9.6%	20.9%	36.0%	2.6%	831
1983	MALE	22.9%	8.0%	24.0%	42.9%	2.3%	715
	FEMALE	31.3%	12.5%	24.2%	30.2%	1.8%	875
1985	MALE	22.3%	8.9%	19.7%	46.5%	2.5%	720
	FEMALE	31.7%	8.5%	19.1%	37.5%	3.3%	810
1986	MALE	21.4%	8.7%	22.2%	45.9%	1.8%	646
	FEMALE	32.3%	8.4%	22.1%	33.7%	3.5%	819
1988	MALE	22.2%	7.7%	20.2%	46.7%	3.3%	453
	FEMALE	28.4%	11.7%	22.9%	34.7%	2.3%	525
1989	MALE	22.0%	7.1%	24.0%	44.8%	2.0%	459
	FEMALE	30.8%	9.8%	21.0%	34.4%	4.0%	554
1990	MALE	21.3%	9.9%	24.3%	41.4%	3.0%	422
	FEMALE	26.1%	11.6%	23.2%	35.5%	3.6%	515
1991	MALE	25.5%	7.0%	18.7%	46.8%	1.9%	437
	FEMALE	28.1%	12.3%	19.3%	37.1%	3.1%	574
1993	MALE	24.6%	8.0%	20.8%	44.8%	1.8%	494
	FEMALE	27.6%	11.3%	21.7%	36.8%	2.6%	585
1994	MALE	19.1%	8.9%	20.2%	48.2%	3.5%	845
	FEMALE	29.6%	10.6%	19.6%	37.7%	2.5%	1111
1996	MALE	19.8%	7.9%	22.7%	46.9%	2.8%	920
	FEMALE	26.5%	11.0%	21.3%	38.4%	2.8%	1046
1998	MALE	22.6%	7.4%	18.8%	48.5%	2.7%	844
	FEMALE	29.0%	9.3%	21.7%	36.2%	3.8%	1039
2000	MALE	24.4%	8.1%	20.8%	44.6%	2.1%	816
	FEMALE	28.3%	8.5%	20.4%	37.5%	5.3%	1048
2002	MALE	20.2%	7.2%	20.6%	49.9%	2.2%	409
	FEMALE	33.2%	8.8%	18.8%	38.0%	1.3%	490
2004	MALE	22.6%	8.7%	16.7%	50.5%	1.5%	425
	FEMALE	30.4%	10.1%	20.4%	36.7%	2.4%	471
2006	MALE	21.3%	8.7%	19.0%	49.1%	1.9%	895
	FEMALE	28.1%	8.8%	19.8%	41.1%	2.2%	1087
2008	MALE	19.8%	5.6%	15.3%	56.5%	2.8%	639
	FEMALE	24.1%	8.2%	14.7%	50.6%	2.4%	694
2010	MALE	17.6%	5.2%	19.5%	56.5%	1.4%	622
	FEMALE	23.6%	9.7%	16.0%	49.0%	1.7%	804
2012	MALE	19.9%	4.0%	15.5%	59.4%	1.2%	611
	FEMALE	22.6%	5.8%	14.7%	53.1%	3.7%	690

SEX WITH PERSON OTHER THAN SPOUSE

SURVEY YEAR	SEX	ALWAYS WRONG	ALMST ALWAYS WRG	SOMETIMES WRONG	NOT WRONG AT ALL	DK	Total
1973	MALE	64.1%	14.7%	14.3%	5.9%	1.0%	717
	FEMALE	74.1%	14.6%	9.2%	1.9%	.2%	783
1974	MALE	67.4%	13.9%	14.8%	2.4%	1.5%	718
	FEMALE	76.6%	11.0%	8.7%	2.5%	1.2%	766
1976	MALE	64.2%	18.7%	12.0%	4.5%	.7%	696
	FEMALE	71.4%	14.3%	9.4%	3.6%	1.3%	799
1977	MALE	68.7%	14.7%	12.3%	3.3%	1.0%	708
	FEMALE	77.1%	12.2%	7.6%	2.2%	.9%	815
1980	MALE	67.7%	16.4%	10.8%	3.8%	1.2%	657
	FEMALE	71.7%	16.0%	8.4%	2.2%	1.7%	810
1982	MALE	70.4%	14.5%	11.1%	2.5%	1.5%	670
	FEMALE	75.7%	12.7%	8.4%	2.2%	1.0%	831
1984	MALE	65.9%	17.9%	12.2%	3.0%	1.1%	622
	FEMALE	74.3%	17.8%	5.9%	.9%	1.0%	844
1985	MALE	71.2%	13.1%	9.7%	4.1%	1.9%	721
	FEMALE	77.5%	13.1%	7.0%	1.9%	.5%	810
1987	MALE	70.6%	18.1%	7.8%	2.1%	1.4%	657
	FEMALE	75.9%	14.3%	6.9%	2.1%	.8%	804
1988	MALE	74.7%	14.0%	6.0%	3.4%	1.8%	417
	FEMALE	83.4%	10.8%	4.3%	.7%	.9%	562
1989	MALE	75.5%	14.5%	6.9%	2.0%	1.1%	467
	FEMALE	79.7%	10.3%	7.9%	1.4%	.7%	567
1990	MALE	72.4%	14.0%	8.9%	2.8%	1.8%	405
	FEMALE	81.9%	10.9%	4.7%	1.0%	1.6%	502
1991	MALE	70.3%	17.3%	7.0%	3.8%	1.6%	452
	FEMALE	79.8%	9.9%	5.2%	2.3%	2.9%	539
1993	MALE	78.1%	13.3%	4.1%	2.9%	1.7%	480
	FEMALE	76.5%	13.9%	6.0%	2.0%	1.5%	581
1994	MALE	75.9%	13.4%	6.8%	2.3%	1.5%	947
	FEMALE	81.4%	11.1%	5.1%	1.6%	.8%	1077
1996	MALE	74.3%	15.6%	6.5%	2.1%	1.6%	890
	FEMALE	79.7%	13.9%	3.6%	1.1%	1.7%	1023
1998	MALE	76.9%	11.9%	7.3%	3.0%	.9%	827
	FEMALE	81.4%	11.3%	3.9%	1.7%	1.7%	1060
2000	MALE	74.9%	12.3%	8.6%	2.7%	1.5%	851
	FEMALE	80.9%	9.4%	6.0%	2.1%	1.7%	1006
2002	MALE	77.6%	12.9%	4.8%	2.6%	2.1%	528
	FEMALE	82.9%	11.8%	3.1%	1.1%	1.1%	408
2004	MALE	76.4%	14.1%	5.6%	2.9%	.9%	409
	FEMALE	85.9%	9.1%	3.7%	.6%	.7%	466
2006	MALE	78.3%	12.6%	5.8%	1.6%	1.6%	898
	FEMALE	83.5%	9.3%	4.9%	1.7%	.6%	1089
2008	MALE	79.0%	11.0%	6.7%	1.8%	1.5%	621
	FEMALE	86.9%	7.4%	4.0%	.9%	.8%	731
2010	MALE	77.4%	12.2%	7.5%	1.9%	.9%	595
	FEMALE	79.6%	12.2%	5.2%	2.0%	.9%	678
2012	MALE	75.7%	14.8%	6.6%	2.0%	.9%	594
	FEMALE	85.1%	7.9%	4.7%	.6%	1.7%	706

HOMOSEXUAL SEX RELATIONS

SURVEY YEAR	SEX	ALWAYS WRONG	ALMST ALWAYS WRG	SOMETIMES WRONG	NOT WRONG AT ALL	OTHER	DK	Total
1973	MALE	69.8%	6.8%	8.1%	11.0%	1.7%	2.7%	717
	FEMALE	70.3%	6.2%	6.7%	10.6%	2.1%	4.0%	780
1974	MALE	67.9%	5.4%	7.3%	11.6%	3.1%	4.7%	718
	FEMALE	64.4%	5.2%	8.9%	13.0%	3.6%	4.9%	767
1976	MALE	67.7%	6.2%	9.1%	13.9%	0.0%	3.1%	695
	FEMALE	67.5%	5.9%	6.4%	15.8%	0.0%	4.4%	793
1977	MALE	69.7%	5.9%	6.5%	14.2%	0.0%	3.6%	705
	FEMALE	70.0%	5.3%	7.8%	12.2%	0.0%	4.7%	815
1980	MALE	72.8%	5.4%	4.5%	14.2%	0.0%	3.0%	654
	FEMALE	69.0%	6.2%	6.6%	13.1%	0.0%	5.1%	811
1982	MALE	74.7%	5.4%	3.8%	12.3%	0.0%	3.9%	668
	FEMALE	68.7%	4.3%	8.3%	14.6%	0.0%	4.2%	830
1984	MALE	72.6%	4.8%	6.3%	14.2%	0.0%	2.1%	622
	FEMALE	72.3%	4.0%	7.2%	11.8%	0.0%	4.7%	845
1985	MALE	73.4%	4.2%	6.9%	12.4%	0.0%	3.2%	721
	FEMALE	73.6%	4.0%	6.8%	13.1%	0.0%	2.6%	809
1987	MALE	76.9%	3.0%	6.8%	10.9%	0.0%	2.5%	655
	FEMALE	74.6%	4.9%	5.7%	12.3%	0.0%	2.5%	799
1988	MALE	77.8%	4.1%	4.2%	11.0%	0.0%	2.9%	417
	FEMALE	72.7%	4.5%	6.1%	13.2%	0.0%	3.6%	561
1989	MALE	73.3%	4.1%	6.8%	12.7%	0.0%	3.1%	465
	FEMALE	69.0%	3.6%	5.4%	16.2%	0.0%	5.8%	568
1990	MALE	76.7%	4.7%	4.1%	9.8%	0.0%	4.7%	406
	FEMALE	69.9%	4.8%	6.7%	14.3%	0.0%	4.3%	502
1991	MALE	76.6%	2.8%	4.0%	12.7%	0.0%	3.9%	451
	FEMALE	69.3%	4.1%	3.6%	15.0%	0.0%	8.0%	538
1993	MALE	64.9%	3.9%	6.9%	20.4%	0.0%	3.9%	479
	FEMALE	60.5%	4.1%	7.7%	21.1%	0.0%	6.7%	580
1994	MALE	67.4%	4.0%	5.5%	18.4%	0.0%	4.7%	946
	FEMALE	60.7%	3.1%	5.6%	24.2%	0.0%	6.4%	1076
1996	MALE	59.2%	6.0%	6.5%	23.7%	0.0%	4.6%	884
	FEMALE	55.1%	3.7%	4.8%	28.1%	0.0%	8.2%	1018
1998	MALE	57.7%	6.1%	7.7%	22.8%	0.0%	5.7%	826
	FEMALE	52.0%	5.0%	6.2%	29.1%	0.0%	7.6%	1059
2000	MALE	55.9%	4.9%	7.3%	25.2%	0.0%	6.8%	848
	FEMALE	52.5%	3.4%	7.6%	27.7%	0.0%	8.8%	1005
2002	MALE	55.9%	5.4%	6.3%	28.2%	0.0%	4.2%	528
	FEMALE	50.8%	4.4%	8.0%	33.6%	0.0%	3.2%	404
2004	MALE	58.2%	5.4%	6.8%	27.7%	0.0%	1.8%	408
	FEMALE	55.4%	4.1%	6.6%	30.7%	0.0%	3.2%	463
2006	MALE	57.0%	5.1%	7.0%	27.0%	0.0%	4.0%	894
	FEMALE	51.5%	4.3%	6.0%	34.4%	0.0%	3.8%	1080
2008	MALE	55.1%	3.3%	6.1%	32.2%	0.0%	3.3%	620
	FEMALE	45.3%	2.6%	6.5%	39.1%	0.0%	6.6%	721
2010	MALE	48.8%	3.6%	8.2%	36.3%	0.0%	3.1%	591
	FEMALE	39.9%	3.4%	7.1%	45.4%	0.0%	4.0%	670
2012	MALE	48.6%	3.3%	9.9%	33.7%	0.0%	4.5%	592
	FEMALE	39.0%	2.2%	5.1%	48.3%	0.0%	5.3%	698

HOMOSEXUALS SHOULD HAVE RIGHT TO MARRY

SURVEY YEAR	SEX	STRONGLY AGREE	AGREE	NEITHER AGREE NOR DISAGREE	DISAGREE	STRONGLY DISAGREE	CANT CHOOSE	Total
1988	MALE	2.6%	6.9%	12.3%	25.2%	48.4%	4.6%	627
	FEMALE	2.6%	9.4%	15.7%	23.9%	41.0%	7.4%	765
2004	MALE	8.2%	16.6%	12.4%	21.8%	39.5%	1.5%	538
	FEMALE	14.5%	20.2%	14.8%	18.6%	29.9%	2.1%	668
2006	MALE	12.0%	19.3%	13.2%	14.9%	39.8%	.7%	903
	FEMALE	17.5%	20.7%	13.5%	16.3%	31.2%	.7%	1087
2008	MALE	12.1%	22.9%	13.1%	15.9%	35.2%	.8%	624
	FEMALE	17.9%	24.3%	12.7%	15.1%	29.0%	1.0%	732
2010	MALE	17.7%	24.0%	11.4%	18.9%	26.8%	1.1%	597
	FEMALE	23.6%	26.2%	13.7%	12.3%	23.1%	1.1%	678
2012	MALE	20.4%	22.0%	12.1%	15.5%	28.8%	1.2%	596
	FEMALE	28.7%	24.7%	11.7%	12.8%	21.1%	1.1%	701

BIRTH CONTROL TO TEENAGERS 14-16

SURVEY YEAR	SEX	STRONGLY AGREE	AGREE	DISAGREE	STRONGLY DISAGREE	DK	Total
1986	MALE	20.1%	34.2%	27.6%	16.1%	2.0%	646
	FEMALE	24.0%	33.4%	22.6%	17.3%	2.6%	820
1988	MALE	26.3%	31.9%	22.2%	14.8%	4.9%	455
	FEMALE	27.9%	27.8%	22.5%	18.3%	3.5%	528
1989	MALE	25.2%	29.6%	25.9%	17.8%	1.4%	461
	FEMALE	28.5%	26.0%	21.8%	20.8%	2.9%	554
1990	MALE	26.3%	28.0%	25.2%	16.5%	4.0%	425
	FEMALE	28.6%	33.4%	21.2%	13.2%	3.7%	517
1991	MALE	23.6%	36.0%	21.2%	17.1%	2.1%	438
	FEMALE	28.4%	31.9%	18.8%	18.5%	2.5%	575
1993	MALE	22.6%	31.0%	23.2%	20.4%	2.8%	492
	FEMALE	29.5%	29.9%	21.8%	15.5%	3.3%	583
1994	MALE	23.6%	30.8%	23.4%	19.8%	2.4%	845
	FEMALE	27.8%	28.9%	19.8%	21.3%	2.3%	1109
1996	MALE	27.2%	29.7%	23.0%	16.7%	3.4%	923
	FEMALE	29.7%	29.2%	18.8%	19.7%	2.6%	1047
1998	MALE	25.5%	30.9%	20.4%	20.2%	3.0%	843
	FEMALE	26.2%	29.0%	20.2%	20.8%	3.9%	1039
2000	MALE	27.6%	27.5%	22.4%	20.0%	2.4%	817
	FEMALE	28.3%	32.0%	17.1%	20.6%	2.0%	1051
2002	MALE	29.4%	24.9%	20.6%	22.6%	2.5%	409
	FEMALE	30.7%	26.2%	18.2%	23.6%	1.4%	493
2004	MALE	24.4%	29.1%	23.9%	20.7%	1.9%	425
	FEMALE	21.4%	29.3%	25.4%	21.7%	2.3%	475
2006	MALE	21.5%	29.1%	24.9%	22.7%	1.8%	896
	FEMALE	27.6%	28.2%	23.4%	19.6%	1.3%	1092
2008	MALE	20.6%	32.7%	23.5%	21.7%	1.6%	295
	FEMALE	24.6%	33.9%	19.1%	20.8%	1.5%	343
2010	MALE	20.8%	32.2%	27.9%	18.2%	1.0%	626
	FEMALE	26.1%	34.4%	23.0%	14.6%	2.0%	804
2012	MALE	19.3%	33.5%	24.4%	20.0%	2.9%	615
	FEMALE	27.5%	32.6%	24.9%	13.8%	1.2%	694

SEX EDUCATION IN PUBLIC SCHOOLS

SURVEY YEAR	SEX	FAVOR	OPPOSE	DK	Total
1974	MALE	77.6%	19.2%	3.2%	693
	FEMALE	81.1%	14.6%	4.3%	733
1975	MALE	73.7%	22.2%	4.1%	666
	FEMALE	79.7%	17.2%	3.1%	768
1977	MALE	76.5%	21.9%	1.7%	698
	FEMALE	76.8%	20.3%	2.8%	793
1982	MALE	80.8%	16.2%	3.0%	652
	FEMALE	84.1%	13.1%	2.8%	809
1983	MALE	85.0%	12.8%	2.3%	701
	FEMALE	82.7%	14.3%	3.0%	852
1985	MALE	83.7%	13.7%	2.5%	699
	FEMALE	81.8%	15.8%	2.4%	790
1986	MALE	83.7%	13.3%	3.0%	628
	FEMALE	81.5%	16.0%	2.5%	800
1988	MALE	87.2%	11.3%	1.5%	448
	FEMALE	83.6%	12.7%	3.7%	505
1989	MALE	86.0%	11.5%	2.4%	449
	FEMALE	84.2%	12.3%	3.5%	534
1990	MALE	86.9%	11.2%	1.9%	415
	FEMALE	89.1%	8.4%	2.5%	504
1991	MALE	85.6%	12.7%	1.7%	431
	FEMALE	84.7%	11.7%	3.6%	553
1993	MALE	84.2%	13.9%	1.9%	485
	FEMALE	84.3%	12.7%	3.0%	567
1994	MALE	85.4%	12.1%	2.6%	822
	FEMALE	86.2%	11.3%	2.4%	1084
1996	MALE	84.4%	13.4%	2.2%	901
	FEMALE	86.0%	11.4%	2.6%	1018
1998	MALE	84.4%	13.3%	2.3%	821
	FEMALE	85.9%	12.2%	1.9%	1019
2000	MALE	86.1%	11.7%	2.2%	796
	FEMALE	84.7%	13.2%	2.1%	1027
2002	MALE	86.3%	11.3%	2.4%	400
	FEMALE	86.2%	12.3%	1.5%	485
2004	MALE	86.4%	12.5%	1.1%	421
	FEMALE	90.1%	8.5%	1.4%	466
2006	MALE	87.9%	10.3%	1.9%	881
	FEMALE	87.8%	11.0%	1.3%	1079
2008	MALE	90.1%	8.2%	1.7%	632
	FEMALE	91.0%	7.8%	1.2%	686
2010	MALE	89.8%	9.4%	.8%	620
	FEMALE	88.4%	10.6%	1.0%	794
2012	MALE	88.6%	10.5%	.9%	606
	FEMALE	90.0%	7.6%	2.5%	679

FEELINGS ABOUT PORNOGRAPHY LAWS

SURVEY YEAR	SEX	ILLEGAL TO ALL	ILLEGAL UNDER 18	LEGAL	DK	Total
1973	MALE	34.8%	53.2%	10.3%	1.7%	716
	FEMALE	46.5%	42.9%	8.8%	1.9%	782
1975	MALE	34.4%	50.8%	12.9%	1.8%	696
	FEMALE	45.3%	44.5%	9.0%	1.1%	793
1976	MALE	31.1%	57.3%	10.3%	1.3%	695
	FEMALE	46.5%	45.1%	6.0%	2.4%	802
1978	MALE	34.8%	54.3%	10.2%	.8%	663
	FEMALE	50.1%	43.8%	5.2%	.9%	868
1980	MALE	32.1%	59.6%	6.8%	1.4%	657
	FEMALE	45.9%	46.5%	5.4%	2.1%	811
1983	MALE	30.8%	61.7%	6.3%	1.3%	718
	FEMALE	50.0%	45.2%	3.6%	1.2%	877
1984	MALE	29.8%	63.6%	6.2%	.4%	621
	FEMALE	48.9%	47.4%	2.0%	1.7%	844
1986	MALE	30.4%	65.0%	3.1%	1.6%	647
	FEMALE	50.7%	45.6%	3.2%	.6%	822
1987	MALE	26.7%	66.2%	5.4%	1.8%	659
	FEMALE	49.5%	46.9%	3.0%	.6%	804
1988	MALE	34.9%	57.3%	6.1%	1.7%	463
	FEMALE	49.9%	44.1%	4.0%	2.0%	533
1989	MALE	29.6%	63.2%	6.2%	1.0%	459
	FEMALE	49.0%	46.5%	3.3%	1.2%	560
1990	MALE	33.5%	58.0%	6.6%	1.9%	411
	FEMALE	45.8%	49.0%	4.3%	.9%	481
1991	MALE	29.1%	64.0%	5.3%	1.6%	443
	FEMALE	48.3%	47.0%	3.5%	1.3%	577
1993	MALE	31.5%	62.3%	4.7%	1.5%	450
	FEMALE	46.7%	49.7%	2.2%	1.4%	613
1994	MALE	27.3%	67.1%	4.8%	.8%	917
	FEMALE	43.9%	54.1%	1.4%	.7%	1061
1996	MALE	24.2%	71.1%	3.5%	1.2%	905
	FEMALE	47.7%	47.7%	3.8%	.8%	1010
1998	MALE	27.2%	67.4%	4.0%	1.5%	873
	FEMALE	46.3%	50.0%	3.3%	.4%	1009
2000	MALE	24.3%	71.8%	3.2%	.8%	869
	FEMALE	43.9%	51.9%	3.0%	1.1%	1014
2002	MALE	31.8%	61.6%	6.1%	.4%	401
	FEMALE	44.5%	51.4%	3.2%	.9%	489
2004	MALE	24.4%	71.3%	3.6%	.6%	433
	FEMALE	51.6%	43.8%	4.4%	.2%	444
2006	MALE	27.5%	67.4%	4.1%	.9%	882
	FEMALE	46.9%	49.9%	2.5%	.8%	1118
2008	MALE	23.6%	71.4%	4.5%	.5%	632
	FEMALE	40.1%	57.0%	2.5%	.3%	718
2010	MALE	18.4%	75.5%	5.0%	1.2%	622
	FEMALE	40.8%	55.5%	3.3%	.4%	754
2012	MALE	25.7%	68.8%	4.6%	.9%	608
	FEMALE	38.1%	58.8%	2.1%	1.0%	720

SEEN X-RATED MOVIE IN LAST YEAR

SURVEY YEAR	SEX	YES	NO	DK	Total
1973	MALE	31.7%	67.2%	1.1%	719
	FEMALE	21.0%	78.8%	.2%	782
1975	MALE	23.5%	75.8%	.7%	696
	FEMALE	15.2%	84.4%	.4%	793
1976	MALE	27.1%	72.6%	.3%	696
	FEMALE	12.1%	87.9%	0.0%	800
1978	MALE	20.2%	79.3%	.5%	663
	FEMALE	11.0%	88.5%	.5%	869
1980	MALE	18.6%	81.2%	.2%	656
	FEMALE	13.2%	86.3%	.5%	811
1983	MALE	24.1%	75.0%	.9%	718
	FEMALE	15.9%	84.1%	.1%	877
1984	MALE	30.2%	69.5%	.2%	623
	FEMALE	18.9%	81.0%	.1%	844
1986	MALE	31.1%	68.7%	.2%	647
	FEMALE	20.5%	79.1%	.4%	819
1987	MALE	34.3%	65.3%	.5%	660
	FEMALE	22.7%	77.1%	.2%	802
1988	MALE	34.9%	64.5%	.6%	464
	FEMALE	21.0%	78.6%	.4%	534
1989	MALE	31.6%	68.3%	.1%	460
	FEMALE	17.6%	81.2%	1.2%	557
1990	MALE	32.0%	67.7%	.3%	408
	FEMALE	16.6%	83.0%	.4%	481
1991	MALE	35.1%	64.9%	0.0%	443
	FEMALE	17.2%	82.5%	.3%	575
1993	MALE	27.5%	72.2%	.4%	450
	FEMALE	14.8%	84.8%	.3%	613
1994	MALE	28.6%	71.4%	0.0%	710
	FEMALE	17.3%	82.1%	.6%	774
1996	MALE	35.4%	64.1%	.5%	904
	FEMALE	19.7%	79.8%	.5%	1009
1998	MALE	32.3%	67.5%	.2%	875
	FEMALE	18.0%	81.1%	.9%	1009
2000	MALE	32.2%	67.4%	.4%	869
	FEMALE	17.8%	81.9%	.3%	1020
2002	MALE	33.0%	66.9%	.1%	404
	FEMALE	15.8%	84.2%	0.0%	488
2004	MALE	36.7%	63.3%	0.0%	434
	FEMALE	16.0%	84.0%	0.0%	445
2006	MALE	33.0%	66.9%	.1%	883
	FEMALE	13.9%	85.8%	.3%	1116
2008	MALE	34.0%	65.7%	.3%	629
	FEMALE	15.4%	84.2%	.5%	717
2010	MALE	37.4%	62.6%	0.0%	619
	FEMALE	15.7%	83.8%	.5%	755
2012	MALE	35.0%	65.0%	.1%	609
	FEMALE	15.8%	83.6%	.6%	721

SEX BEFORE MARRIAGE – TEENS 14-16

SURVEY YEAR	AGE	ALWAYS WRONG	ALMST ALWAYS WRG	SOMETIMES WRONG	NOT WRONG AT ALL	DK	Total
1986	18-34	50.7%	24.2%	20.1%	3.2%	1.8%	536
	35-49	67.5%	21.5%	7.4%	3.6%	0.0%	415
	50-64	78.8%	11.2%	3.4%	3.6%	2.9%	278
	65+	84.1%	9.1%	3.7%	.9%	2.2%	232
1988	18-34	53.5%	20.7%	20.8%	4.3%	.7%	372
	35-49	69.6%	17.9%	7.6%	4.3%	.6%	285
	50-64	80.6%	13.1%	3.5%	1.0%	1.7%	154
	65+	84.9%	6.6%	4.7%	2.5%	1.3%	169
1989	18-34	55.4%	22.9%	13.9%	5.8%	2.0%	379
	35-49	69.7%	16.5%	8.8%	4.0%	.9%	290
	50-64	83.0%	9.3%	4.7%	2.7%	.3%	186
	65+	85.7%	8.1%	3.6%	1.3%	1.3%	157
1990	18-34	53.2%	19.1%	18.3%	6.0%	3.4%	328
	35-49	65.4%	20.6%	9.3%	2.0%	2.7%	296
	50-64	82.0%	12.0%	4.1%	.6%	1.3%	168
	65+	85.6%	6.3%	3.3%	2.2%	2.6%	144
1991	18-34	55.5%	24.3%	13.4%	5.5%	1.4%	346
	35-49	66.0%	19.8%	9.1%	2.0%	3.1%	321
	50-64	71.3%	16.7%	3.5%	6.1%	2.3%	182
	65+	86.5%	6.1%	4.1%	2.0%	1.4%	157
1993	18-34	54.6%	21.8%	16.6%	5.2%	1.8%	354
	35-49	64.6%	21.7%	8.7%	3.7%	1.3%	354
	50-64	81.1%	9.8%	4.6%	3.0%	1.4%	193
	65+	83.7%	10.6%	3.0%	1.2%	1.5%	175
1994	18-34	57.0%	22.2%	14.2%	5.9%	.7%	637
	35-49	70.4%	18.1%	7.9%	3.1%	.5%	638
	50-64	75.7%	15.3%	5.2%	2.7%	1.1%	385
	65+	86.6%	7.9%	2.6%	1.5%	1.5%	294
1996	18-34	58.6%	16.4%	17.3%	6.7%	1.1%	661
	35-49	69.2%	18.6%	7.3%	3.4%	1.5%	672
	50-64	76.5%	14.7%	5.2%	2.5%	1.0%	384
	65+	83.4%	7.8%	5.8%	2.4%	.6%	251
1998	18-34	58.5%	21.9%	12.9%	5.5%	1.3%	611
	35-49	72.7%	16.2%	6.8%	3.0%	1.2%	635
	50-64	79.8%	10.2%	4.9%	2.7%	2.5%	372
	65+	85.2%	9.5%	3.8%	.4%	1.1%	261
2000	18-34	58.6%	17.3%	16.2%	6.8%	1.1%	574
	35-49	73.4%	15.8%	7.5%	2.5%	.9%	662
	50-64	78.3%	12.9%	5.3%	2.4%	1.2%	372
	65+	85.6%	10.1%	2.8%	0.0%	1.5%	256
2002	18-34	64.7%	16.5%	10.5%	5.9%	2.4%	302
	35-49	70.1%	16.6%	8.4%	4.3%	.7%	246
	50-64	75.1%	11.9%	9.1%	2.5%	1.4%	197
	65+	83.6%	9.7%	4.5%	1.5%	.7%	149
2004	18-34	62.1%	18.6%	15.3%	3.5%	.5%	290
	35-49	72.2%	14.8%	8.0%	4.6%	.3%	273
	50-64	73.7%	11.9%	8.6%	3.8%	2.0%	210
	65+	77.5%	13.7%	5.3%	1.2%	2.3%	122
2006	18-34	61.9%	18.5%	12.0%	6.7%	.8%	615
	35-49	73.6%	13.9%	7.9%	3.9%	.6%	602
	50-64	78.1%	11.8%	5.9%	2.8%	1.4%	478
	65+	79.6%	14.0%	4.4%	1.1%	.9%	289
2008	18-34	64.9%	18.6%	9.2%	6.8%	.5%	385
	35-49	72.1%	14.3%	8.8%	4.4%	.4%	414
	50-64	73.4%	15.5%	6.7%	3.9%	.5%	332
	65+	78.6%	11.7%	6.7%	1.5%	1.5%	200

SEX BEFORE MARRIAGE – TEENS 14-16 (CONTINUED)

SURVEY YEAR	AGE	ALWAYS WRONG	ALMST ALWAYS WRG	SOMETIMES WRONG	NOT WRONG AT ALL	DK	Total
2010	18-34	55.6%	14.0%	21.1%	8.2%	1.1%	428
	35-49	68.8%	16.8%	7.8%	6.0%	.6%	386
	50-64	74.1%	12.3%	9.0%	4.6%	0.0%	362
	65+	72.4%	19.7%	5.0%	2.2%	.7%	249
2012	18-34	49.5%	20.7%	21.3%	8.0%	.6%	440
	35-49	71.2%	12.6%	7.4%	7.6%	1.2%	358
	50-64	74.6%	13.3%	8.2%	3.4%	.6%	301
	65+	80.6%	9.7%	4.6%	2.8%	2.3%	208

SEX BEFORE MARRIAGE

SURVEY YEAR	AGE	ALWAYS WRONG	ALMST ALWAYS WRG	SOMETIMES WRONG	NOT WRONG AT ALL	DK	Total
1972	18-34	17.6%	7.6%	30.6%	40.1%	4.1%	581
	35-49	38.5%	11.6%	23.8%	23.3%	2.7%	425
	50-64	42.0%	14.6%	21.3%	15.9%	6.1%	392
	65+	58.4%	11.5%	11.7%	13.9%	4.4%	201
1974	18-34	15.3%	10.0%	26.3%	46.4%	1.9%	536
	35-49	33.0%	13.2%	24.9%	24.4%	4.5%	380
	50-64	44.9%	14.7%	22.5%	15.5%	2.3%	339
	65+	53.3%	14.2%	12.9%	14.4%	5.2%	217
1975	18-34	14.7%	7.6%	28.6%	46.7%	2.5%	560
	35-49	33.4%	12.2%	24.6%	26.5%	3.4%	389
	50-64	35.5%	19.1%	21.0%	18.8%	5.5%	324
	65+	51.8%	12.3%	16.7%	13.2%	6.0%	209
1977	18-34	14.9%	6.6%	25.1%	51.5%	1.8%	542
	35-49	30.6%	12.0%	22.2%	33.1%	2.1%	403
	50-64	39.0%	11.8%	21.9%	22.9%	4.4%	373
	65+	53.4%	8.8%	16.8%	17.3%	3.8%	197
1978	18-34	15.5%	6.3%	23.1%	53.8%	1.3%	613
	35-49	29.5%	15.8%	18.8%	33.6%	2.3%	371
	50-64	39.8%	16.5%	18.0%	23.6%	2.0%	326
	65+	48.3%	15.0%	14.5%	18.1%	4.0%	213
1982	18-34	14.4%	6.0%	26.3%	52.7%	6%	604
	35-49	25.5%	10.5%	21.8%	40.0%	2.2%	335
	50-64	38.6%	10.4%	16.4%	28.5%	6.0%	327
	65+	47.5%	10.0%	13.9%	22.7%	5.9%	227
1983	18-34	17.8%	8.1%	29.3%	44.2%	6%	624
	35-49	26.7%	12.0%	20.6%	38.5%	2.1%	407
	50-64	36.3%	13.0%	21.1%	26.7%	2.8%	337
	65+	43.2%	10.5%	21.0%	21.3%	4.0%	216
1985	18-34	16.2%	5.0%	23.3%	54.8%	8%	548
	35-49	25.6%	8.8%	15.8%	47.1%	2.7%	390
	50-64	34.0%	13.2%	19.5%	29.3%	4.0%	350
	65+	45.7%	10.5%	15.3%	21.7%	6.8%	237
1986	18-34	12.4%	7.7%	28.8%	50.2%	9%	534
	35-49	27.7%	6.6%	19.2%	45.0%	1.6%	415
	50-64	37.4%	10.1%	16.3%	30.6%	5.6%	278
	65+	49.8%	12.4%	18.0%	14.1%	5.7%	232
1988	18-34	16.3%	6.0%	23.1%	52.7%	1.9%	372
	35-49	21.5%	10.3%	23.6%	43.2%	1.5%	284
	50-64	33.8%	13.6%	20.6%	26.5%	5.6%	152
	65+	45.3%	14.5%	16.0%	19.8%	4.4%	169
1989	18-34	12.5%	5.0%	27.1%	54.0%	1.3%	379
	35-49	23.5%	8.5%	22.1%	42.0%	3.9%	289
	50-64	36.3%	14.6%	18.1%	27.5%	3.6%	186
	65+	56.2%	10.4%	16.9%	11.4%	5.2%	157
1990	18-34	17.0%	6.0%	29.5%	44.3%	3.1%	327
	35-49	19.4%	10.2%	25.8%	41.4%	3.2%	296
	50-64	25.2%	17.0%	18.0%	35.6%	4.1%	168
	65+	47.3%	16.1%	12.8%	20.5%	3.3%	145
1991	18-34	22.0%	5.3%	19.1%	51.0%	2.6%	348
	35-49	22.2%	10.4%	20.7%	44.6%	2.1%	323
	50-64	29.5%	15.2%	15.8%	36.0%	3.5%	182
	65+	44.6%	13.9%	19.6%	19.3%	2.7%	157
1993	18-34	16.7%	8.2%	23.9%	50.1%	1.0%	354
	35-49	22.5%	7.6%	19.4%	46.9%	3.6%	355
	50-64	34.3%	10.9%	23.4%	30.0%	1.4%	194
	65+	43.6%	16.4%	17.6%	19.4%	3.0%	174

SEX BEFORE MARRIAGE (CONTINUED)

SURVEY YEAR	AGE	ALWAYS WRONG	ALMST ALWAYS WRG	SOMETIMES WRONG	NOT WRONG AT ALL	DK	Total
1994	18-34	16.4%	6.9%	20.6%	54.4%	1.8%	637
	35-49	22.1%	8.8%	22.2%	44.7%	2.1%	638
	50-64	29.2%	13.1%	18.2%	34.2%	5.4%	384
	65+	45.4%	14.2%	15.7%	20.5%	4.2%	293
1996	18-34	16.3%	8.3%	24.3%	48.9%	2.1%	659
	35-49	24.0%	6.8%	19.4%	46.3%	3.6%	671
	50-64	27.8%	9.9%	21.3%	39.0%	2.0%	383
	65+	34.0%	18.6%	23.6%	20.1%	3.7%	251
1998	18-34	19.1%	6.9%	20.6%	50.9%	2.5%	612
	35-49	24.4%	7.5%	18.0%	47.5%	2.5%	635
	50-64	29.4%	9.3%	21.7%	35.3%	4.3%	372
	65+	42.4%	12.7%	24.1%	15.0%	5.9%	261
2000	18-34	20.0%	5.7%	21.5%	49.1%	3.6%	574
	35-49	23.2%	8.0%	19.9%	45.0%	3.9%	660
	50-64	29.2%	9.7%	23.3%	34.7%	3.1%	372
	65+	47.0%	12.5%	15.7%	19.2%	5.6%	255
2002	18-34	22.2%	10.9%	15.3%	50.3%	1.3%	302
	35-49	22.3%	3.6%	25.5%	48.3%	.2%	245
	50-64	29.7%	8.2%	19.3%	41.4%	1.4%	197
	65+	43.2%	9.0%	18.8%	24.1%	4.9%	148
2004	18-34	21.9%	7.3%	23.1%	47.1%	.7%	290
	35-49	24.8%	8.1%	14.9%	50.1%	2.1%	271
	50-64	26.9%	9.6%	16.8%	43.0%	3.6%	210
	65+	41.0%	17.9%	18.2%	20.5%	2.4%	120
2006	18-34	19.7%	6.5%	22.2%	50.5%	1.2%	615
	35-49	25.6%	8.6%	15.5%	47.7%	2.7%	599
	50-64	26.2%	10.5%	19.6%	41.4%	2.3%	478
	65+	33.5%	11.2%	21.4%	31.6%	2.3%	288
2008	18-34	18.3%	6.2%	16.1%	56.6%	2.7%	385
	35-49	20.0%	4.7%	14.6%	59.0%	1.7%	413
	50-64	24.2%	8.0%	13.5%	51.8%	2.5%	332
	65+	29.4%	11.0%	16.4%	38.7%	4.5%	198
2010	18-34	14.6%	5.6%	19.6%	59.1%	1.2%	429
	35-49	19.0%	7.2%	19.1%	53.3%	1.4%	386
	50-64	24.5%	5.3%	14.5%	54.5%	1.2%	360
	65+	30.0%	15.3%	16.0%	35.8%	3.0%	248
2012	18-34	13.7%	3.9%	16.5%	64.8%	1.2%	438
	35-49	21.6%	4.3%	12.3%	58.3%	3.4%	355
	50-64	22.6%	5.8%	14.1%	55.6%	2.0%	296
	65+	34.5%	7.5%	18.4%	34.6%	4.9%	208

SEX WITH PERSON OTHER THAN SPOUSE

SURVEY YEAR	AGE	ALWAYS WRONG	ALMST ALWAYS WRG	SOMETIMES WRONG	NOT WRONG AT ALL	DK	Total
1973	18-34	59.2%	17.8%	17.5%	5.2%	.3%	529
	35-49	69.6%	14.0%	11.7%	4.4%	.2%	413
	50-64	77.2%	12.8%	6.8%	2.5%	.6%	367
	65+	81.5%	11.0%	4.4%	1.0%	2.2%	187
1974	18-34	60.2%	16.4%	17.5%	4.4%	1.5%	538
	35-49	72.9%	11.4%	12.5%	1.7%	1.6%	382
	50-64	79.5%	12.6%	6.0%	.7%	1.2%	341
	65+	88.9%	3.6%	4.9%	1.7%	.9%	219
1976	18-34	57.2%	21.3%	14.9%	5.9%	.8%	578
	35-49	67.4%	17.9%	8.2%	4.4%	2.1%	342
	50-64	76.1%	11.1%	10.0%	2.2%	.6%	353
	65+	85.4%	8.3%	4.0%	1.3%	.9%	216
1977	18-34	63.8%	17.4%	14.4%	3.7%	.7%	542
	35-49	72.9%	12.6%	10.7%	2.7%	1.1%	403
	50-64	78.8%	12.1%	5.2%	2.4%	1.6%	373
	65+	88.6%	6.2%	4.2%	1.0%	0.0%	199
1980	18-34	64.0%	19.3%	12.2%	2.8%	1.7%	563
	35-49	62.9%	21.6%	10.8%	4.0%	.7%	368
	50-64	80.8%	9.5%	5.9%	3.1%	.7%	311
	65+	82.2%	8.0%	5.4%	1.2%	3.3%	218
1982	18-34	66.2%	19.2%	11.3%	2.3%	.9%	602
	35-49	71.9%	11.7%	12.7%	2.2%	1.5%	334
	50-64	77.0%	11.7%	7.6%	2.4%	1.4%	327
	65+	88.0%	4.1%	4.1%	2.5%	1.4%	228
1984	18-34	66.2%	20.2%	10.8%	1.7%	1.1%	575
	35-49	66.9%	18.7%	9.6%	3.7%	1.1%	409
	50-64	78.5%	16.3%	4.5%	0.0%	.7%	276
	65+	80.2%	11.8%	5.9%	.8%	1.3%	201
1985	18-34	69.3%	17.1%	9.9%	2.8%	.9%	548
	35-49	68.5%	15.4%	10.7%	4.4%	1.1%	391
	50-64	80.9%	9.2%	6.5%	2.2%	1.2%	351
	65+	87.7%	5.3%	3.1%	2.0%	2.0%	236
1987	18-34	67.7%	21.4%	8.2%	2.2%	.5%	515
	35-49	68.7%	18.5%	8.4%	2.4%	2.0%	438
	50-64	82.5%	9.5%	5.3%	1.5%	1.3%	278
	65+	84.3%	7.6%	5.6%	2.2%	.2%	225
1988	18-34	76.6%	14.2%	5.5%	1.9%	1.7%	366
	35-49	75.9%	13.3%	6.8%	2.6%	1.3%	283
	50-64	86.2%	9.2%	3.1%	.6%	.9%	174
	65+	86.2%	8.6%	2.8%	1.7%	.7%	154
1989	18-34	76.2%	13.9%	8.2%	1.0%	.7%	356
	35-49	70.6%	15.8%	9.5%	2.6%	1.5%	313
	50-64	81.7%	8.5%	7.1%	2.2%	.5%	187
	65+	89.6%	6.4%	2.9%	.6%	.6%	177
1990	18-34	76.9%	12.0%	7.5%	3.2%	.5%	320
	35-49	73.9%	14.5%	8.3%	1.0%	2.4%	268
	50-64	77.6%	11.9%	5.1%	2.0%	3.4%	157
	65+	85.5%	9.9%	3.3%	0.0%	1.3%	162
1991	18-34	75.8%	12.3%	7.1%	2.9%	1.8%	349
	35-49	68.0%	18.0%	7.2%	2.8%	4.0%	304
	50-64	81.9%	10.9%	2.5%	4.4%	.3%	170
	65+	81.5%	8.9%	5.4%	1.9%	2.2%	167
1993	18-34	79.8%	13.1%	4.3%	1.8%	.9%	344
	35-49	71.4%	17.6%	7.2%	2.5%	1.3%	361
	50-64	80.9%	9.0%	4.4%	3.6%	2.2%	193
	65+	79.9%	11.8%	3.3%	2.0%	3.0%	161

SEX WITH PERSON OTHER THAN SPOUSE (CONTINUED)

SURVEY YEAR	AGE	ALWAYS WRONG	ALMST ALWAYS WRG	SOMETIMES WRONG	NOT WRONG AT ALL	DK	Total
1994	18-34	81.4%	10.8%	4.9%	2.3%	.6%	669
	35-49	75.0%	14.0%	7.9%	1.4%	1.6%	681
	50-64	78.1%	13.7%	4.5%	2.8%	.8%	386
	65+	83.1%	8.7%	5.3%	1.1%	1.7%	285
1996	18-34	77.5%	14.4%	6.0%	.9%	1.1%	675
	35-49	76.1%	14.6%	5.2%	1.7%	2.4%	643
	50-64	78.2%	14.8%	3.2%	2.4%	1.4%	359
	65+	77.8%	15.5%	3.7%	1.8%	1.2%	235
1998	18-34	78.1%	11.7%	6.6%	2.5%	1.1%	611
	35-49	78.2%	12.1%	6.0%	2.5%	1.2%	627
	50-64	80.6%	11.4%	3.5%	2.6%	1.9%	378
	65+	83.7%	10.0%	4.1%	.6%	1.6%	270
2000	18-34	77.3%	10.6%	8.6%	2.6%	.8%	591
	35-49	77.3%	12.2%	6.7%	2.3%	1.4%	615
	50-64	75.7%	10.9%	7.7%	3.3%	2.4%	369
	65+	84.9%	7.3%	4.3%	.8%	2.8%	280
2002	18-34	81.1%	12.4%	3.8%	1.5%	1.1%	292
	35-49	82.8%	10.4%	3.0%	2.6%	1.3%	262
	50-64	76.0%	13.0%	6.9%	1.3%	2.8%	218
	65+	78.4%	15.0%	2.4%	2.8%	1.4%	160
2004	18-34	85.4%	7.8%	4.2%	1.5%	1.0%	273
	35-49	83.1%	9.4%	5.0%	2.5%	0.0%	276
	50-64	74.1%	17.8%	5.8%	1.3%	1.1%	216
	65+	81.6%	13.7%	2.1%	.8%	1.7%	109
2006	18-34	83.5%	8.7%	5.3%	2.1%	.4%	617
	35-49	79.1%	12.4%	4.9%	2.4%	1.4%	606
	50-64	79.9%	12.0%	5.4%	1.1%	1.6%	469
	65+	82.4%	10.2%	6.2%	.3%	.9%	290
2008	18-34	82.5%	9.7%	6.1%	1.3%	.3%	380
	35-49	82.4%	10.9%	3.7%	.9%	2.0%	398
	50-64	85.6%	6.1%	5.3%	1.9%	1.1%	349
	65+	82.5%	8.9%	6.5%	1.2%	1.0%	222
2010	18-34	76.2%	12.5%	9.2%	1.6%	.5%	365
	35-49	83.1%	9.9%	4.5%	2.0%	.5%	353
	50-64	75.3%	12.9%	7.0%	2.9%	1.8%	350
	65+	80.6%	14.6%	2.9%	.9%	1.1%	202
2012	18-34	83.6%	10.6%	3.7%	1.6%	.4%	380
	35-49	77.4%	11.8%	6.9%	1.6%	2.3%	375
	50-64	79.9%	12.3%	6.4%	1.0%	.4%	339
	65+	82.7%	8.7%	5.2%	.4%	3.0%	202

HOMOSEXUAL SEX RELATIONS

SURVEY YEAR	AGE	ALWAYS WRONG	ALMST ALWAYS WRG	SOMETIMES WRONG	NOT WRONG AT ALL	OTHER	DK	Total
1973	18-34	59.3%	6.4%	12.2%	17.5%	1.8%	2.8%	529
	35-49	69.7%	8.6%	7.0%	9.4%	2.9%	2.4%	413
	50-64	78.3%	5.8%	4.1%	7.1%	1.4%	3.3%	365
	65+	84.4%	3.4%	1.2%	2.2%	1.0%	7.8%	187
1974	18-34	52.9%	7.0%	14.3%	19.0%	3.2%	3.6%	538
	35-49	67.3%	4.9%	6.2%	13.1%	3.5%	5.0%	382
	50-64	76.1%	4.0%	3.3%	7.0%	3.6%	6.2%	341
	65+	81.1%	4.0%	4.0%	3.2%	2.8%	4.9%	219
1976	18-34	56.9%	8.8%	9.3%	22.3%	0.0%	2.8%	577
	35-49	68.3%	6.7%	8.3%	12.8%	0.0%	3.9%	338
	50-64	74.2%	3.4%	6.2%	11.0%	0.0%	5.1%	352
	65+	84.9%	2.3%	3.8%	4.7%	0.0%	4.3%	215
1977	18-34	58.7%	7.0%	9.8%	21.0%	0.0%	3.4%	542
	35-49	73.0%	5.4%	8.5%	9.4%	0.0%	3.7%	403
	50-64	75.8%	4.8%	4.7%	9.7%	0.0%	5.1%	371
	65+	82.8%	3.7%	2.5%	5.0%	0.0%	6.0%	198
1980	18-34	61.7%	7.8%	8.1%	18.7%	0.0%	3.6%	561
	35-49	68.8%	7.2%	6.1%	13.9%	0.0%	3.9%	367
	50-64	81.8%	2.1%	3.4%	9.0%	0.0%	3.6%	311
	65+	81.3%	3.3%	2.1%	6.6%	0.0%	6.8%	218
1982	18-34	64.3%	6.6%	8.9%	16.7%	0.0%	3.5%	601
	35-49	70.6%	5.4%	8.2%	13.3%	0.0%	2.5%	334
	50-64	77.3%	3.6%	2.5%	13.1%	0.0%	3.5%	327
	65+	83.4%	.9%	1.4%	6.3%	0.0%	7.9%	228
1984	18-34	66.3%	4.4%	9.2%	17.6%	0.0%	2.5%	575
	35-49	68.9%	3.8%	7.7%	14.2%	0.0%	5.4%	410
	50-64	81.6%	4.8%	3.4%	7.1%	0.0%	3.2%	277
	65+	84.0%	4.9%	3.1%	4.4%	0.0%	3.6%	200
1985	18-34	66.2%	3.7%	10.0%	17.8%	0.0%	2.3%	548
	35-49	68.5%	6.4%	7.0%	15.7%	0.0%	2.4%	390
	50-64	83.0%	3.4%	5.2%	6.3%	0.0%	2.1%	351
	65+	85.1%	1.1%	1.8%	5.9%	0.0%	6.1%	237
1987	18-34	71.7%	4.8%	7.0%	14.0%	0.0%	2.5%	515
	35-49	69.0%	5.9%	8.0%	14.9%	0.0%	2.2%	435
	50-64	83.8%	2.0%	5.3%	5.5%	0.0%	3.3%	275
	65+	86.7%	1.3%	2.0%	7.9%	0.0%	2.0%	225
1988	18-34	67.3%	5.7%	7.0%	16.4%	0.0%	3.6%	366
	35-49	73.4%	3.8%	6.2%	13.2%	0.0%	3.4%	282
	50-64	82.8%	2.5%	3.1%	7.7%	0.0%	4.0%	173
	65+	86.6%	4.1%	2.1%	5.9%	0.0%	1.4%	154
1989	18-34	67.6%	3.7%	5.0%	18.4%	0.0%	5.3%	356
	35-49	63.5%	5.7%	9.5%	16.3%	0.0%	5.1%	313
	50-64	78.5%	2.2%	4.7%	11.8%	0.0%	2.8%	185
	65+	82.9%	2.3%	3.5%	6.9%	0.0%	4.3%	177
1990	18-34	65.9%	5.1%	7.3%	16.9%	0.0%	4.7%	320
	35-49	73.0%	4.7%	5.7%	12.2%	0.0%	4.3%	269
	50-64	79.0%	4.7%	3.1%	10.2%	0.0%	3.1%	157
	65+	81.0%	3.9%	3.9%	5.2%	0.0%	5.9%	162
1991	18-34	70.1%	2.7%	4.7%	17.0%	0.0%	5.5%	349
	35-49	65.7%	5.1%	4.4%	17.8%	0.0%	7.0%	302
	50-64	77.9%	3.7%	2.2%	10.0%	0.0%	6.2%	170
	65+	85.0%	2.2%	2.2%	4.8%	0.0%	5.7%	167

HOMOSEXUAL SEX RELATIONS (CONTINUED)

SURVEY YEAR	AGE	ALWAYS WRONG	ALMST ALWAYS WRG	SOMETIMES WRONG	NOT WRONG AT ALL	OTHER	DK	Total
1993	18-34	56.2%	4.6%	8.2%	26.5%	0.0%	4.6%	344
	35-49	55.6%	4.5%	8.2%	23.8%	0.0%	7.9%	362
	50-64	69.5%	3.0%	6.9%	16.8%	0.0%	3.8%	192
	65+	83.1%	2.7%	4.3%	6.6%	0.0%	3.3%	159
1994	18-34	58.0%	3.9%	4.9%	28.7%	0.0%	4.5%	670
	35-49	60.9%	3.5%	7.0%	22.0%	0.0%	6.6%	680
	50-64	69.5%	3.5%	4.9%	17.3%	0.0%	4.8%	385
	65+	77.1%	2.7%	4.4%	9.1%	0.0%	6.7%	284
1996	18-34	48.8%	3.9%	5.7%	35.7%	0.0%	5.9%	674
	35-49	55.5%	4.8%	7.4%	24.0%	0.0%	8.3%	638
	50-64	63.9%	5.5%	2.8%	22.6%	0.0%	5.2%	354
	65+	74.8%	6.2%	4.4%	9.2%	0.0%	5.3%	235
1998	18-34	41.3%	5.7%	7.9%	37.2%	0.0%	7.9%	609
	35-49	56.3%	5.7%	8.0%	24.6%	0.0%	5.4%	629
	50-64	59.1%	5.8%	4.5%	22.4%	0.0%	8.2%	376
	65+	74.0%	4.3%	4.9%	11.2%	0.0%	5.5%	269
2000	18-34	45.2%	3.4%	7.6%	36.5%	0.0%	7.2%	591
	35-49	51.6%	4.5%	8.5%	26.2%	0.0%	9.2%	611
	50-64	59.1%	2.5%	8.0%	23.7%	0.0%	6.7%	370
	65+	71.5%	6.5%	4.0%	9.9%	0.0%	8.1%	277
2002	18-34	46.5%	4.4%	6.1%	40.0%	0.0%	3.1%	292
	35-49	50.8%	3.9%	6.5%	34.4%	0.0%	4.5%	259
	50-64	56.9%	4.9%	9.5%	23.8%	0.0%	4.9%	218
	65+	66.8%	8.0%	6.6%	16.4%	0.0%	2.1%	160
2004	18-34	53.0%	3.9%	9.2%	33.3%	0.0%	.7%	273
	35-49	60.9%	4.0%	3.1%	28.8%	0.0%	3.2%	276
	50-64	51.5%	5.8%	6.9%	32.5%	0.0%	3.2%	215
	65+	65.6%	6.6%	9.6%	14.3%	0.0%	3.9%	106
2006	18-34	44.5%	4.8%	7.4%	40.2%	0.0%	3.1%	613
	35-49	52.5%	4.4%	5.6%	32.1%	0.0%	5.4%	603
	50-64	58.4%	4.7%	7.0%	27.5%	0.0%	2.4%	464
	65+	69.7%	4.9%	5.3%	15.1%	0.0%	5.0%	291
2008	18-34	40.7%	1.9%	4.5%	49.3%	0.0%	3.6%	378
	35-49	46.1%	3.6%	7.8%	37.2%	0.0%	5.2%	395
	50-64	50.7%	3.2%	8.2%	31.4%	0.0%	6.6%	344
	65+	70.7%	3.0%	4.1%	17.1%	0.0%	5.0%	221
2010	18-34	28.9%	4.2%	10.9%	51.9%	0.0%	4.0%	362
	35-49	45.2%	3.0%	6.0%	42.5%	0.0%	3.3%	349
	50-64	52.0%	2.5%	6.9%	36.1%	0.0%	2.4%	349
	65+	55.4%	5.1%	5.7%	28.5%	0.0%	5.4%	199
2012	18-34	31.4%	2.7%	10.2%	53.1%	0.0%	2.6%	378
	35-49	44.0%	2.9%	5.3%	43.8%	0.0%	4.0%	374
	50-64	44.9%	3.0%	8.3%	36.0%	0.0%	7.8%	336
	65+	62.6%	2.1%	4.3%	24.6%	0.0%	6.5%	197

HOMOSEXUALS SHOULD HAVE RIGHT TO MARRY

SURVEY YEAR	AGE	STRONGLY AGREE	AGREE	NEITHER AGREE NOR DISAGREE	DISAGREE	STRONGLY DISAGREE	CANT CHOOSE	Total
1988	18-34	3.7%	9.5%	18.1%	21.8%	41.6%	5.2%	519
	35-49	2.7%	7.6%	15.1%	25.3%	44.9%	4.4%	408
	50-64	.9%	8.9%	12.8%	25.8%	47.0%	4.6%	233
	65+	1.6%	6.2%	5.1%	27.5%	47.3%	12.2%	230
2004	18-34	18.5%	24.9%	11.9%	15.2%	26.9%	2.5%	399
	35-49	10.6%	15.4%	16.8%	18.9%	36.7%	1.7%	362
	50-64	7.5%	16.9%	11.9%	27.0%	36.1%	.6%	298
	65+	4.5%	12.8%	14.3%	21.6%	44.3%	2.5%	146
2006	18-34	21.0%	25.1%	13.8%	12.8%	26.8%	.6%	620
	35-49	13.1%	19.9%	15.9%	17.2%	33.5%	.4%	604
	50-64	13.4%	19.1%	12.5%	17.1%	37.0%	1.0%	471
	65+	9.3%	12.0%	8.1%	16.5%	53.0%	1.2%	291
2008	18-34	23.5%	26.9%	12.5%	12.0%	24.4%	.7%	381
	35-49	16.0%	27.8%	13.9%	12.0%	29.7%	.7%	400
	50-64	11.8%	20.1%	15.0%	20.3%	32.7%	0.0%	349
	65+	4.8%	16.0%	8.7%	19.7%	47.6%	3.1%	223
2010	18-34	30.1%	32.0%	18.9%	10.1%	8.6%	.3%	364
	35-49	19.1%	24.4%	13.9%	14.0%	26.7%	1.8%	354
	50-64	16.9%	21.9%	5.6%	18.4%	36.3%	1.0%	350
	65+	14.3%	19.6%	11.6%	22.4%	30.6%	1.6%	205
2012	18-34	35.0%	26.7%	12.9%	10.6%	13.9%	.9%	381
	35-49	27.0%	23.3%	10.5%	8.3%	28.8%	2.2%	375
	50-64	20.4%	18.7%	14.6%	18.8%	26.7%	.9%	335
	65+	10.0%	25.1%	8.1%	22.9%	33.7%	.2%	201

BIRTH CONTROL TO TEENAGERS 14-16

SURVEY YEAR	AGE	STRONGLY AGREE	AGREE	DISAGREE	STRONGLY DISAGREE	DK	Total
1986	18-34	29.0%	38.2%	21.3%	10.4%	1.0%	536
	35-49	22.9%	34.2%	24.5%	17.2%	1.2%	415
	50-64	16.0%	31.0%	28.2%	21.3%	3.5%	276
	65+	13.7%	26.1%	29.1%	25.4%	5.7%	232
1988	18-34	36.5%	33.2%	19.2%	9.1%	2.0%	373
	35-49	24.7%	27.8%	23.7%	20.0%	3.7%	286
	50-64	26.0%	21.8%	28.4%	18.0%	5.9%	154
	65+	11.3%	32.4%	21.4%	26.7%	8.2%	169
1989	18-34	32.0%	33.6%	21.9%	11.3%	1.2%	380
	35-49	29.4%	30.3%	19.9%	20.1%	.4%	290
	50-64	21.0%	18.9%	33.1%	24.0%	3.0%	187
	65+	17.3%	19.0%	23.9%	33.0%	6.9%	156
1990	18-34	37.6%	28.9%	19.4%	11.0%	3.1%	329
	35-49	26.1%	40.7%	20.4%	11.7%	1.1%	299
	50-64	20.5%	27.4%	29.3%	18.0%	4.7%	168
	65+	15.8%	19.8%	28.9%	25.3%	10.3%	145
1991	18-34	31.8%	39.2%	16.0%	12.7%	.3%	348
	35-49	25.9%	37.0%	17.5%	17.9%	1.6%	324
	50-64	24.3%	24.3%	25.1%	22.2%	4.1%	182
	65+	17.5%	25.6%	26.9%	24.6%	5.4%	158

BIRTH CONTROL TO TEENAGERS 14-16 (CONTINUED)

SURVEY YEAR	AGE	STRONGLY AGREE	AGREE	DISAGREE	STRONGLY DISAGREE	DK	Total
1993	18-34	37.8%	31.0%	17.9%	12.2%	1.0%	354
	35-49	23.2%	35.3%	23.0%	14.9%	3.6%	351
	50-64	23.5%	25.7%	22.4%	25.4%	3.0%	193
	65+	12.8%	24.6%	30.7%	25.8%	6.1%	174
1994	18-34	32.6%	35.3%	17.8%	12.4%	1.8%	637
	35-49	28.1%	27.6%	21.6%	21.4%	1.4%	640
	50-64	23.0%	28.1%	23.4%	21.4%	4.1%	379
	65+	10.7%	23.8%	26.0%	36.1%	3.5%	294
1996	18-34	36.3%	31.4%	18.3%	12.6%	1.4%	660
	35-49	27.7%	30.4%	19.5%	18.8%	3.6%	672
	50-64	25.4%	27.2%	23.8%	21.4%	2.3%	383
	65+	15.1%	25.1%	26.1%	27.0%	6.7%	251
1998	18-34	32.8%	34.1%	17.8%	13.1%	2.2%	611
	35-49	28.6%	29.7%	16.6%	21.6%	3.5%	635
	50-64	19.9%	25.6%	26.4%	24.1%	4.0%	372
	65+	11.4%	25.5%	26.4%	30.6%	6.1%	261
2000	18-34	38.4%	29.8%	15.8%	13.7%	2.3%	574
	35-49	25.6%	34.4%	19.7%	18.7%	1.5%	660
	50-64	24.7%	27.6%	21.3%	24.0%	2.3%	376
	65+	15.9%	22.6%	23.5%	34.3%	3.7%	255
2002	18-34	37.9%	27.4%	13.3%	20.3%	1.1%	302
	35-49	28.3%	27.4%	21.0%	22.6%	.7%	247
	50-64	25.6%	25.0%	18.5%	28.1%	2.8%	196
	65+	23.9%	21.3%	28.7%	22.4%	3.7%	149
2004	18-34	30.2%	30.7%	22.0%	15.6%	1.5%	290
	35-49	25.7%	31.3%	23.8%	17.7%	1.6%	273
	50-64	16.6%	27.9%	22.7%	30.3%	2.4%	210
	65+	8.8%	24.7%	35.6%	27.1%	3.8%	122
2006	18-34	33.0%	32.0%	19.2%	14.9%	1.0%	616
	35-49	27.4%	30.7%	19.2%	20.7%	2.0%	600
	50-64	16.4%	26.0%	30.9%	25.7%	1.0%	479
	65+	16.5%	21.0%	33.3%	26.8%	2.3%	289
2008	18-34	28.0%	34.5%	20.9%	15.5%	1.2%	183
	35-49	22.9%	40.8%	15.5%	18.5%	2.3%	190
	50-64	23.6%	28.3%	24.1%	23.2%	.8%	165
	65+	11.5%	25.9%	27.7%	32.7%	2.2%	99
2010	18-34	26.8%	39.9%	18.9%	13.5%	.8%	429
	35-49	24.7%	31.0%	27.2%	15.1%	2.0%	386
	50-64	21.3%	30.8%	27.4%	19.0%	1.5%	363
	65+	20.8%	29.8%	29.2%	18.0%	2.2%	249
2012	18-34	27.7%	36.4%	21.3%	13.2%	1.4%	440
	35-49	28.6%	29.7%	23.7%	15.6%	2.4%	357
	50-64	18.4%	34.9%	23.8%	21.2%	1.8%	302
	65+	14.5%	28.3%	34.8%	19.6%	2.8%	206

SEX EDUCATION IN PUBLIC SCHOOLS

SURVEY YEAR	AGE	FAVOR	OPPOSE	DK	Total
1974	18-34	88.5%	9.9%	1.6%	529
	35-49	84.3%	11.8%	3.9%	366
	50-64	75.2%	20.0%	4.8%	324
	65+	54.9%	37.8%	7.3%	202
1975	18-34	86.4%	11.9%	1.7%	550
	35-49	81.5%	13.7%	4.8%	372
	50-64	73.2%	24.5%	2.3%	316
	65+	48.7%	43.1%	8.2%	192
1977	18-34	86.4%	12.9%	.6%	539
	35-49	77.2%	19.6%	3.2%	392
	50-64	76.9%	20.6%	2.5%	365
	65+	48.3%	47.0%	4.8%	188
1982	18-34	90.2%	8.4%	1.5%	596
	35-49	88.0%	10.1%	1.8%	330
	50-64	76.7%	20.2%	3.2%	317
	65+	64.7%	28.3%	7.0%	212
1983	18-34	90.0%	8.0%	1.9%	613
	35-49	86.3%	11.4%	2.4%	396
	50-64	81.0%	16.7%	2.2%	331
	65+	66.1%	28.4%	5.5%	208
1985	18-34	90.1%	8.6%	1.2%	539
	35-49	89.1%	8.4%	2.5%	380
	50-64	76.6%	21.1%	2.4%	341
	65+	64.5%	30.5%	5.0%	224
1986	18-34	90.5%	8.0%	1.5%	528
	35-49	85.1%	12.5%	2.4%	404
	50-64	79.2%	17.3%	3.4%	269
	65+	64.0%	30.8%	5.2%	220
1988	18-34	94.0%	4.3%	1.7%	364
	35-49	85.3%	13.2%	1.5%	282
	50-64	83.4%	13.1%	3.5%	148
	65+	67.5%	26.2%	6.3%	158
1989	18-34	89.5%	8.1%	2.4%	370
	35-49	91.7%	7.2%	1.1%	287
	50-64	84.3%	12.1%	3.6%	179
	65+	63.1%	29.8%	7.1%	147
1990	18-34	92.4%	6.6%	1.0%	325
	35-49	90.6%	7.5%	2.0%	292
	50-64	85.2%	12.6%	2.2%	165
	65+	76.8%	17.6%	5.5%	137
1991	18-34	89.4%	7.7%	2.9%	337
	35-49	89.0%	10.2%	.8%	321
	50-64	83.3%	15.2%	1.5%	179
	65+	70.4%	22.6%	7.1%	147
1993	18-34	90.0%	9.4%	.6%	352
	35-49	88.7%	9.7%	1.6%	348
	50-64	80.4%	15.3%	4.4%	186
	65+	68.0%	26.3%	5.7%	165
1994	18-34	93.5%	4.7%	1.8%	625
	35-49	87.3%	10.6%	2.1%	626
	50-64	84.4%	13.5%	2.1%	374
	65+	68.1%	26.8%	5.2%	278
1996	18-34	92.5%	5.8%	1.6%	649
	35-49	85.5%	13.1%	1.5%	659
	50-64	80.5%	15.7%	3.8%	369
	65+	72.9%	22.3%	4.8%	238

SEX EDUCATION IN PUBLIC SCHOOLS (CONTINUED)

SURVEY YEAR	AGE	FAVOR	OPPOSE	DK	Total
1998	18-34	91.0%	8.2%	.8%	606
	35-49	88.0%	10.2%	1.8%	623
	50-64	84.1%	13.0%	2.8%	361
	65+	66.6%	28.8%	4.7%	248
2000	18-34	91.5%	7.6%	.9%	570
	35-49	86.4%	11.8%	1.8%	649
	50-64	86.0%	12.7%	1.3%	364
	65+	67.4%	25.5%	7.1%	238
2002	18-34	91.3%	7.0%	1.7%	297
	35-49	88.0%	11.5%	.5%	245
	50-64	83.3%	15.0%	1.7%	194
	65+	78.4%	16.8%	4.9%	142
2004	18-34	93.0%	6.3%	.7%	288
	35-49	91.5%	7.9%	.5%	270
	50-64	83.6%	14.9%	1.5%	207
	65+	82.2%	13.9%	3.9%	116
2006	18-34	92.1%	7.0%	.9%	611
	35-49	87.3%	11.8%	1.0%	596
	50-64	87.8%	10.3%	1.9%	470
	65+	79.7%	17.0%	3.3%	279
2008	18-34	94.9%	4.3%	.7%	381
	35-49	91.6%	7.5%	.8%	410
	50-64	89.4%	9.0%	1.6%	329
	65+	81.8%	14.3%	3.9%	193
2010	18-34	94.7%	5.2%	.1%	427
	35-49	88.2%	11.2%	.6%	382
	50-64	87.2%	12.0%	.8%	361
	65+	83.0%	13.8%	3.2%	240
2012	18-34	91.9%	6.3%	1.8%	430
	35-49	93.0%	5.0%	1.9%	351
	50-64	86.8%	12.1%	1.1%	298
	65+	81.2%	16.6%	2.2%	204

FEELINGS ABOUT PORNOGRAPHY LAWS

SURVEY YEAR	AGE	ILLEGAL TO ALL	ILLEGAL UNDER 18	LEGAL	DK	Total
1973	18-34	20.6%	63.9%	14.1%	1.4%	529
	35-49	43.7%	48.0%	6.9%	1.4%	413
	50-64	55.3%	36.1%	6.0%	2.6%	366
	65+	63.5%	25.4%	8.9%	2.2%	186
1975	18-34	22.8%	64.5%	11.2%	1.5%	561
	35-49	42.7%	44.8%	10.8%	1.7%	391
	50-64	52.7%	34.1%	12.2%	1.0%	324
	65+	63.2%	27.2%	8.0%	1.6%	209
1976	18-34	21.0%	67.6%	10.7%	.7%	577
	35-49	39.3%	52.9%	6.4%	1.4%	343
	50-64	52.7%	36.6%	7.8%	2.9%	353
	65+	66.3%	25.4%	4.0%	4.2%	217
1978	18-34	27.0%	64.6%	7.7%	.7%	615
	35-49	48.7%	46.8%	4.4%	.1%	372
	50-64	54.1%	37.0%	7.8%	1.1%	325
	65+	66.4%	20.8%	10.9%	1.9%	214
1980	18-34	21.0%	70.3%	8.1%	.6%	563
	35-49	40.1%	53.5%	5.3%	1.1%	368
	50-64	55.5%	38.1%	3.9%	2.5%	311
	65+	65.8%	25.5%	4.2%	4.4%	218
1983	18-34	27.3%	68.2%	3.9%	.6%	624
	35-49	38.0%	55.7%	5.2%	1.1%	407
	50-64	58.3%	36.3%	4.2%	1.2%	337
	65+	61.9%	28.4%	7.1%	2.5%	221
1984	18-34	26.4%	68.5%	4.4%	.7%	576
	35-49	36.0%	59.9%	3.2%	.9%	407
	50-64	58.9%	35.3%	4.7%	1.1%	276
	65+	66.1%	29.3%	2.1%	2.6%	201
1986	18-34	28.0%	68.5%	2.5%	.9%	536
	35-49	37.1%	59.3%	3.4%	.2%	415
	50-64	51.0%	44.7%	2.7%	1.6%	279
	65+	69.6%	23.9%	4.8%	1.7%	232
1987	18-34	26.2%	69.1%	4.5%	.2%	517
	35-49	35.2%	60.6%	3.1%	1.2%	438
	50-64	55.5%	39.6%	3.3%	1.6%	278
	65+	57.0%	34.5%	6.1%	2.5%	225
1988	18-34	30.7%	62.9%	5.3%	1.0%	370
	35-49	40.6%	55.2%	3.8%	.4%	280
	50-64	53.9%	35.9%	7.1%	3.1%	172
	65+	62.6%	28.3%	4.0%	5.0%	171
1989	18-34	27.3%	68.5%	3.4%	.8%	371
	35-49	34.2%	61.4%	3.7%	.7%	293
	50-64	61.0%	31.6%	6.1%	1.3%	193
	65+	56.8%	34.4%	6.6%	2.2%	162
1990	18-34	29.6%	66.4%	3.2%	.8%	316
	35-49	36.9%	58.6%	3.9%	.6%	272
	50-64	47.9%	40.8%	9.6%	1.7%	155
	65+	60.4%	27.9%	8.2%	3.6%	149
1991	18-34	30.1%	64.9%	3.6%	1.4%	344
	35-49	36.1%	60.5%	2.8%	.6%	328
	50-64	47.9%	43.1%	7.3%	1.7%	189
	65+	59.9%	32.1%	5.4%	2.7%	159
1993	18-34	25.9%	69.6%	3.4%	1.1%	337
	35-49	34.5%	62.0%	2.9%	.6%	362
	50-64	48.8%	44.1%	4.4%	2.7%	193
	65+	71.2%	23.8%	2.5%	2.5%	169

FEELINGS ABOUT PORNOGRAPHY LAWS (CONTINUED)

SURVEY YEAR	AGE	ILLEGAL TO ALL	ILLEGAL UNDER 18	LEGAL	DK	Total
1994	18-34	22.7%	74.5%	2.5%	.3%	634
	35-49	32.2%	64.4%	2.7%	.7%	649
	50-64	44.1%	51.0%	3.8%	1.1%	388
	65+	63.1%	32.1%	3.6%	1.2%	305
1996	18-34	25.2%	71.4%	2.5%	.8%	652
	35-49	32.3%	63.9%	3.3%	.5%	639
	50-64	46.6%	47.9%	4.1%	1.3%	367
	65+	62.2%	28.8%	6.8%	2.1%	254
1998	18-34	23.4%	72.4%	3.8%	.4%	629
	35-49	34.8%	61.6%	2.6%	1.0%	617
	50-64	45.4%	49.7%	3.8%	1.1%	350
	65+	64.3%	28.8%	5.2%	1.7%	285
2000	18-34	19.8%	75.6%	4.0%	.6%	596
	35-49	31.5%	65.8%	1.8%	.9%	630
	50-64	44.8%	50.7%	3.8%	.7%	374
	65+	61.4%	33.5%	3.0%	2.2%	277
2002	18-34	24.4%	69.4%	5.9%	.2%	263
	35-49	33.8%	62.7%	3.5%	0.0%	271
	50-64	49.3%	47.2%	1.9%	1.6%	209
	65+	59.5%	31.1%	7.8%	1.6%	143
2004	18-34	25.4%	70.7%	3.4%	.5%	273
	35-49	35.0%	60.6%	4.4%	0.0%	282
	50-64	41.6%	53.2%	4.6%	.7%	201
	65+	69.2%	25.9%	4.0%	.8%	118
2006	18-34	26.3%	69.0%	3.6%	1.1%	630
	35-49	36.7%	60.9%	2.1%	.4%	626
	50-64	41.8%	53.3%	4.2%	.7%	467
	65+	63.8%	31.5%	3.1%	1.7%	272
2008	18-34	19.1%	77.2%	3.5%	.1%	379
	35-49	27.0%	70.5%	2.2%	.4%	397
	50-64	40.0%	54.8%	4.8%	.4%	359
	65+	54.3%	41.4%	3.2%	1.0%	208
2010	18-34	19.0%	76.3%	4.5%	.2%	423
	35-49	29.5%	65.6%	4.4%	.6%	356
	50-64	35.0%	61.4%	2.4%	1.2%	362
	65+	47.1%	46.2%	5.4%	1.3%	234
2012	18-34	20.8%	73.7%	4.6%	.8%	393
	35-49	29.1%	67.1%	3.6%	.2%	355
	50-64	35.7%	61.3%	2.0%	1.0%	342
	65+	52.0%	43.6%	2.3%	2.1%	235

SEEN X-RATED MOVIE IN LAST YEAR

SURVEY YEAR	AGE	YES	NO	DK	Total
1973	18-34	43.5%	55.2%	1.3%	531
	35-49	25.8%	74.2%	0.0%	413
	50-64	13.7%	85.9%	.4%	367
	65+	2.2%	96.8%	1.0%	187
1975	18-34	33.5%	65.9%	.6%	561
	35-49	14.1%	85.5%	.5%	391
	50-64	10.2%	89.1%	.7%	324
	65+	4.0%	95.8%	.2%	209
1976	18-34	33.2%	66.6%	.2%	578
	35-49	14.5%	85.3%	.1%	341
	50-64	9.2%	90.5%	.3%	352
	65+	3.8%	96.2%	0.0%	218
1978	18-34	22.0%	77.4%	.6%	615
	35-49	15.0%	84.6%	.4%	372
	50-64	7.9%	91.6%	.5%	326
	65+	5.9%	93.4%	.7%	214
1980	18-34	22.6%	77.2%	.2%	563
	35-49	16.7%	82.4%	1.0%	368
	50-64	10.3%	89.7%	0.0%	311
	65+	3.8%	96.0%	.2%	217
1983	18-34	26.6%	73.4%	0.0%	625
	35-49	22.1%	77.9%	0.0%	407
	50-64	10.2%	89.1%	.7%	337
	65+	9.6%	89.2%	1.1%	221
1984	18-34	31.1%	68.6%	.3%	576
	35-49	26.5%	73.5%	0.0%	408
	50-64	16.2%	83.8%	0.0%	278
	65+	7.5%	92.3%	.3%	201
1986	18-34	37.9%	61.7%	.5%	535
	35-49	28.0%	71.8%	.2%	415
	50-64	14.0%	85.5%	.5%	277
	65+	4.1%	95.9%	0.0%	232
1987	18-34	40.5%	59.2%	.3%	517
	35-49	33.3%	66.4%	.2%	438
	50-64	15.2%	84.5%	.4%	276
	65+	5.1%	94.4%	.4%	226
1988	18-34	40.4%	58.8%	.9%	370
	35-49	29.8%	70.2%	0.0%	280
	50-64	15.7%	83.3%	.9%	172
	65+	7.1%	92.9%	0.0%	172
1989	18-34	37.9%	61.8%	.3%	370
	35-49	28.0%	70.4%	1.6%	292
	50-64	7.9%	92.1%	0.0%	193
	65+	3.2%	95.9%	.9%	161
1990	18-34	33.9%	66.1%	0.0%	316
	35-49	27.6%	71.4%	1.0%	269
	50-64	12.3%	87.7%	0.0%	155
	65+	6.4%	93.2%	.4%	149
1991	18-34	37.1%	62.8%	.2%	344
	35-49	25.4%	74.6%	0.0%	326
	50-64	15.2%	84.8%	0.0%	189
	65+	9.6%	89.7%	.7%	160
1993	18-34	30.3%	69.3%	.5%	337
	35-49	20.9%	78.7%	.4%	362
	50-64	12.6%	87.4%	0.0%	193
	65+	7.2%	92.5%	.3%	169

SEEN X-RATED MOVIE IN LAST YEAR (CONTINUED)

SURVEY YEAR	AGE	YES	NO	DK	Total
1994	18-34	35.7%	64.3%	0.0%	488
	35-49	23.3%	76.1%	.7%	482
	50-64	13.1%	86.6%	.4%	286
	65+	6.0%	94.0%	0.0%	226
1996	18-34	40.2%	59.3%	.5%	649
	35-49	25.1%	74.3%	.6%	639
	50-64	20.4%	79.0%	.6%	368
	65+	8.8%	91.0%	.2%	254
1998	18-34	39.6%	60.0%	.4%	627
	35-49	24.7%	74.7%	.6%	618
	50-64	13.8%	85.3%	.9%	351
	65+	5.4%	94.4%	.2%	285
2000	18-34	41.6%	58.1%	.4%	596
	35-49	21.7%	77.9%	.4%	633
	50-64	16.6%	83.3%	.1%	377
	65+	4.2%	95.6%	.2%	277
2002	18-34	39.4%	60.4%	.2%	263
	35-49	23.3%	76.7%	0.0%	271
	50-64	14.2%	85.8%	0.0%	211
	65+	8.6%	91.4%	0.0%	143
2004	18-34	45.1%	54.9%	0.0%	273
	35-49	26.2%	73.8%	0.0%	282
	50-64	12.9%	87.1%	0.0%	201
	65+	6.3%	93.7%	0.0%	118
2006	18-34	35.6%	64.2%	.1%	630
	35-49	22.0%	78.0%	0.0%	624
	50-64	14.8%	84.4%	.8%	468
	65+	5.9%	94.1%	0.0%	273
2008	18-34	40.4%	59.2%	.3%	379
	35-49	27.3%	72.5%	.2%	396
	50-64	13.2%	86.7%	.1%	359
	65+	6.9%	91.8%	1.3%	206
2010	18-34	44.9%	54.5%	.6%	420
	35-49	25.0%	74.8%	.1%	355
	50-64	15.4%	84.3%	.3%	362
	65+	7.2%	92.8%	0.0%	236
2012	18-34	41.2%	57.8%	1.1%	394
	35-49	28.8%	71.2%	0.0%	355
	50-64	13.3%	86.6%	.1%	343
	65+	7.1%	92.9%	0.0%	235

SEX BEFORE MARRIAGE – TEENS 14-16

SURVEY YEAR	EDUCATION	ALWAYS WRONG	ALMST ALWAYS WRG	SOMETIMES WRONG	NOT WRONG AT ALL	DK	Total
1986	LT HIGH SCHOOL	71.7%	11.1%	10.8%	3.7%	2.8%	382
	HIGH SCHOOL	66.2%	17.8%	11.7%	3.0%	1.3%	777
	COLLEGE+	58.5%	30.3%	8.0%	2.1%	1.0%	307
1988	LT HIGH SCHOOL	73.1%	7.6%	14.2%	3.5%	1.5%	243
	HIGH SCHOOL	67.5%	17.9%	10.5%	3.1%	1.0%	513
	COLLEGE+	63.3%	21.6%	10.9%	4.3%	0.0%	224
1989	LT HIGH SCHOOL	76.5%	12.8%	5.8%	3.5%	1.4%	219
	HIGH SCHOOL	68.5%	15.4%	10.5%	4.0%	1.6%	552
	COLLEGE+	64.2%	21.4%	9.0%	4.9%	.4%	239
1990	LT HIGH SCHOOL	77.1%	6.1%	7.8%	4.9%	4.1%	183
	HIGH SCHOOL	69.3%	14.4%	11.7%	1.9%	2.7%	499
	COLLEGE+	56.3%	27.8%	10.7%	3.4%	1.7%	248
1991	LT HIGH SCHOOL	78.6%	8.8%	5.6%	4.8%	2.1%	198
	HIGH SCHOOL	67.1%	18.1%	9.1%	3.7%	2.0%	555
	COLLEGE+	55.0%	28.1%	10.7%	3.8%	2.3%	249
1993	LT HIGH SCHOOL	70.4%	12.6%	9.5%	4.9%	2.6%	184
	HIGH SCHOOL	71.4%	15.9%	8.1%	3.6%	1.1%	580
	COLLEGE+	58.7%	24.4%	12.0%	3.2%	1.7%	312
1994	LT HIGH SCHOOL	71.9%	12.0%	10.1%	4.2%	1.9%	312
	HIGH SCHOOL	72.3%	16.2%	7.1%	3.9%	.5%	1047
	COLLEGE+	63.2%	22.4%	10.5%	3.2%	.6%	592
1996	LT HIGH SCHOOL	70.1%	12.8%	7.5%	7.3%	2.3%	284
	HIGH SCHOOL	71.2%	13.6%	10.7%	3.3%	1.3%	1098
	COLLEGE+	64.1%	21.0%	10.1%	4.4%	.4%	589
1998	LT HIGH SCHOOL	80.8%	8.9%	6.3%	3.0%	1.1%	261
	HIGH SCHOOL	71.5%	15.5%	8.4%	3.2%	1.4%	1010
	COLLEGE+	66.8%	19.2%	8.2%	3.9%	1.8%	603
2000	LT HIGH SCHOOL	70.8%	13.9%	11.1%	2.4%	1.8%	297
	HIGH SCHOOL	75.1%	11.9%	8.8%	3.3%	.9%	1005
	COLLEGE+	65.1%	20.8%	8.7%	4.3%	1.1%	554
2002	LT HIGH SCHOOL	72.8%	10.3%	9.9%	3.9%	3.0%	129
	HIGH SCHOOL	74.4%	12.8%	7.6%	3.8%	1.3%	508
	COLLEGE+	66.0%	19.1%	9.8%	4.2%	.8%	263
2004	LT HIGH SCHOOL	72.7%	9.7%	11.0%	2.6%	4.0%	106
	HIGH SCHOOL	70.2%	15.6%	9.3%	4.1%	.8%	487
	COLLEGE+	69.3%	16.2%	11.0%	3.0%	.4%	307
2006	LT HIGH SCHOOL	73.1%	13.9%	5.7%	6.0%	1.3%	261
	HIGH SCHOOL	74.1%	13.0%	7.3%	4.9%	.7%	1001
	COLLEGE+	68.6%	17.6%	10.3%	2.4%	1.1%	726
2008	LT HIGH SCHOOL	74.6%	11.0%	4.9%	8.5%	1.1%	193
	HIGH SCHOOL	72.2%	15.4%	8.0%	3.8%	.7%	677
	COLLEGE+	68.8%	17.5%	9.4%	3.9%	.4%	466
2010	LT HIGH SCHOOL	69.2%	13.4%	7.7%	9.7%	0.0%	215
	HIGH SCHOOL	69.0%	13.6%	12.0%	4.4%	1.1%	718
	COLLEGE+	62.6%	18.8%	12.8%	5.6%	.2%	494
2012	LT HIGH SCHOOL	64.0%	13.5%	14.5%	5.4%	2.5%	185
	HIGH SCHOOL	70.0%	13.4%	10.2%	6.0%	.4%	670
	COLLEGE+	61.7%	17.8%	13.0%	6.2%	1.3%	455

SEX BEFORE MARRIAGE

SURVEY YEAR	EDUCATION	ALWAYS WRONG	ALMST ALWAYS WRG	SOMETIMES WRONG	NOT WRONG AT ALL	DK	Total
1972	LT HIGH SCHOOL	44.5%	10.4%	17.7%	23.1%	4.3%	620
	HIGH SCHOOL	29.9%	10.5%	27.9%	26.9%	4.7%	777
	COLLEGE+	18.3%	14.1%	32.4%	32.4%	2.7%	180
1974	LT HIGH SCHOOL	42.8%	11.8%	19.4%	22.0%	4.1%	515
	HIGH SCHOOL	28.3%	13.4%	24.4%	31.3%	2.5%	728
	COLLEGE+	21.6%	11.4%	27.6%	36.1%	3.2%	233
1975	LT HIGH SCHOOL	37.0%	11.1%	21.3%	25.2%	5.3%	527
	HIGH SCHOOL	28.9%	13.6%	22.5%	31.8%	3.3%	743
	COLLEGE+	12.8%	8.4%	37.4%	39.0%	2.4%	215
1977	LT HIGH SCHOOL	37.8%	8.5%	22.6%	26.5%	4.6%	528
	HIGH SCHOOL	26.8%	9.5%	21.9%	39.9%	1.9%	749
	COLLEGE+	22.9%	12.5%	23.7%	39.5%	1.5%	238
1978	LT HIGH SCHOOL	37.3%	11.3%	15.6%	32.4%	3.4%	461
	HIGH SCHOOL	26.8%	12.1%	21.0%	38.2%	1.9%	816
	COLLEGE+	18.2%	12.9%	24.3%	44.3%	.4%	248
1982	LT HIGH SCHOOL	40.4%	7.8%	16.6%	31.8%	3.3%	428
	HIGH SCHOOL	24.2%	7.8%	22.8%	42.6%	2.6%	804
	COLLEGE+	16.0%	11.5%	24.0%	44.4%	4.1%	265
1983	LT HIGH SCHOOL	37.1%	8.5%	16.2%	36.5%	1.6%	409
	HIGH SCHOOL	25.8%	11.8%	26.5%	33.4%	2.5%	855
	COLLEGE+	20.2%	9.3%	27.8%	41.5%	1.1%	325
1985	LT HIGH SCHOOL	36.5%	9.2%	13.2%	36.0%	5.0%	404
	HIGH SCHOOL	26.5%	7.9%	20.6%	42.7%	2.3%	809
	COLLEGE+	17.5%	10.1%	24.0%	46.6%	1.8%	317
1986	LT HIGH SCHOOL	36.5%	10.1%	13.8%	34.7%	4.9%	382
	HIGH SCHOOL	25.8%	8.4%	24.7%	38.6%	2.5%	775
	COLLEGE+	20.3%	7.0%	26.1%	45.9%	.7%	307
1988	LT HIGH SCHOOL	34.9%	10.7%	15.7%	36.2%	2.4%	243
	HIGH SCHOOL	23.2%	10.1%	23.6%	39.9%	3.1%	510
	COLLEGE+	20.6%	8.5%	23.4%	45.2%	2.4%	225
1989	LT HIGH SCHOOL	38.7%	10.7%	15.6%	28.9%	6.1%	219
	HIGH SCHOOL	24.7%	7.5%	23.9%	41.2%	2.6%	551
	COLLEGE+	20.1%	9.0%	25.5%	43.9%	1.5%	239
1990	LT HIGH SCHOOL	28.7%	14.8%	17.4%	34.8%	4.3%	183
	HIGH SCHOOL	24.6%	9.9%	24.7%	37.4%	3.4%	499
	COLLEGE+	19.5%	9.4%	26.6%	42.0%	2.6%	248
1991	LT HIGH SCHOOL	36.5%	13.4%	11.5%	36.5%	2.1%	198
	HIGH SCHOOL	25.3%	9.0%	20.2%	42.3%	3.2%	559
	COLLEGE+	23.0%	9.8%	22.2%	43.3%	1.7%	249
1993	LT HIGH SCHOOL	36.6%	10.1%	21.9%	28.8%	2.6%	183
	HIGH SCHOOL	27.0%	9.8%	18.2%	43.0%	1.9%	580
	COLLEGE+	18.9%	9.1%	26.6%	42.7%	2.7%	313
1994	LT HIGH SCHOOL	32.1%	11.4%	16.8%	35.4%	4.3%	312
	HIGH SCHOOL	25.7%	9.6%	18.7%	42.9%	3.1%	1046
	COLLEGE+	20.1%	9.4%	23.8%	44.8%	1.9%	591
1996	LT HIGH SCHOOL	28.7%	7.3%	14.9%	42.7%	6.3%	284
	HIGH SCHOOL	23.6%	10.2%	22.3%	41.7%	2.2%	1093
	COLLEGE+	20.5%	9.3%	24.7%	43.3%	2.2%	589
1998	LT HIGH SCHOOL	31.5%	10.5%	21.0%	32.1%	4.8%	262
	HIGH SCHOOL	27.7%	7.5%	19.8%	42.0%	2.9%	1009
	COLLEGE+	21.1%	9.1%	21.2%	45.0%	3.5%	603

SEX BEFORE MARRIAGE (CONTINUED)

SURVEY YEAR	EDUCATION	ALWAYS WRONG	ALMST ALWAYS WRG	SOMETIMES WRONG	NOT WRONG AT ALL	DK	Total
2000	LT HIGH SCHOOL	33.8%	7.9%	13.7%	38.1%	6.5%	297
	HIGH SCHOOL	27.0%	8.5%	20.8%	40.2%	3.5%	1002
	COLLEGE+	22.4%	8.3%	23.9%	42.5%	2.9%	554
2002	LT HIGH SCHOOL	40.7%	7.4%	13.0%	35.5%	3.5%	129
	HIGH SCHOOL	26.8%	8.8%	19.0%	44.8%	.5%	508
	COLLEGE+	21.7%	7.0%	24.1%	44.3%	2.8%	262
2004	LT HIGH SCHOOL	37.1%	8.9%	8.0%	40.0%	5.9%	105
	HIGH SCHOOL	27.2%	9.4%	20.0%	41.6%	1.7%	486
	COLLEGE+	22.3%	9.7%	20.1%	46.9%	1.1%	306
2006	LT HIGH SCHOOL	34.5%	13.5%	18.9%	31.6%	1.5%	258
	HIGH SCHOOL	24.9%	8.0%	18.1%	46.7%	2.4%	1001
	COLLEGE+	21.8%	8.2%	21.5%	46.7%	1.9%	723
2008	LT HIGH SCHOOL	22.0%	11.8%	14.2%	45.7%	6.3%	191
	HIGH SCHOOL	23.5%	5.7%	14.5%	53.6%	2.6%	675
	COLLEGE+	19.9%	6.8%	16.0%	56.2%	1.0%	467
2010	LT HIGH SCHOOL	30.7%	6.4%	19.3%	42.1%	1.4%	215
	HIGH SCHOOL	21.2%	8.5%	15.3%	53.7%	1.4%	715
	COLLEGE+	16.5%	7.2%	19.9%	54.6%	1.8%	495
2012	LT HIGH SCHOOL	32.7%	3.9%	14.7%	45.7%	3.0%	185
	HIGH SCHOOL	19.0%	5.6%	15.5%	57.6%	2.4%	668
	COLLEGE+	20.1%	4.6%	14.6%	58.1%	2.7%	447

SEX WITH PERSON OTHER THAN SPOUSE

SURVEY YEAR	EDUCATION	ALWAYS WRONG	ALMST ALWAYS WRG	SOMETIMES WRONG	NOT WRONG AT ALL	DK	Total
1973	LT HIGH SCHOOL	77.2%	10.1%	8.1%	3.6%	.9%	546
	HIGH SCHOOL	67.6%	16.6%	12.2%	3.1%	.6%	729
	COLLEGE+	55.6%	21.0%	17.3%	6.1%	0.0%	209
1974	LT HIGH SCHOOL	81.3%	7.3%	8.1%	2.4%	.9%	515
	HIGH SCHOOL	70.0%	13.9%	12.5%	2.3%	1.4%	732
	COLLEGE+	59.0%	18.8%	16.8%	3.2%	2.2%	235
1976	LT HIGH SCHOOL	75.9%	11.5%	8.5%	2.8%	1.3%	515
	HIGH SCHOOL	69.0%	15.5%	10.7%	4.1%	.7%	750
	COLLEGE+	46.7%	30.9%	14.7%	6.3%	1.5%	225
1977	LT HIGH SCHOOL	80.5%	8.4%	7.1%	2.9%	1.1%	530
	HIGH SCHOOL	73.4%	14.3%	9.5%	2.4%	.5%	750
	COLLEGE+	55.9%	21.8%	16.6%	3.7%	1.9%	238
1980	LT HIGH SCHOOL	79.2%	7.9%	8.8%	2.0%	2.1%	435
	HIGH SCHOOL	70.8%	17.3%	8.6%	2.9%	.4%	765
	COLLEGE+	51.7%	26.8%	13.2%	4.6%	3.7%	264
1982	LT HIGH SCHOOL	81.8%	7.9%	7.0%	2.5%	.8%	427
	HIGH SCHOOL	72.6%	13.9%	10.6%	1.7%	1.2%	803
	COLLEGE+	62.5%	21.3%	10.4%	3.9%	2.0%	264
1984	LT HIGH SCHOOL	78.6%	9.4%	7.9%	2.4%	1.7%	386
	HIGH SCHOOL	71.3%	19.2%	7.6%	1.2%	.7%	789
	COLLEGE+	58.5%	25.7%	12.2%	2.7%	.9%	287
1985	LT HIGH SCHOOL	84.4%	7.7%	4.0%	3.3%	.6%	404
	HIGH SCHOOL	75.2%	12.4%	7.8%	3.1%	1.5%	809
	COLLEGE+	60.3%	21.8%	15.0%	2.0%	1.0%	318
1987	LT HIGH SCHOOL	81.0%	9.9%	6.6%	1.8%	.7%	338
	HIGH SCHOOL	75.6%	15.3%	6.7%	1.7%	.7%	782
	COLLEGE+	61.2%	23.7%	9.7%	3.3%	2.1%	335
1988	LT HIGH SCHOOL	87.2%	4.6%	4.1%	2.8%	1.3%	245
	HIGH SCHOOL	83.4%	11.3%	3.5%	.8%	1.0%	522
	COLLEGE+	62.1%	22.9%	9.8%	3.3%	2.0%	211
1989	LT HIGH SCHOOL	85.5%	6.1%	6.1%	1.2%	1.2%	219
	HIGH SCHOOL	79.3%	11.7%	6.9%	1.4%	.6%	568
	COLLEGE+	67.4%	18.7%	10.1%	2.5%	1.3%	243
1990	LT HIGH SCHOOL	80.2%	7.9%	7.6%	2.8%	1.4%	188
	HIGH SCHOOL	80.0%	11.7%	5.5%	1.4%	1.4%	493
	COLLEGE+	70.4%	17.2%	8.1%	1.7%	2.6%	223
1991	LT HIGH SCHOOL	80.1%	9.0%	5.4%	3.5%	1.9%	195
	HIGH SCHOOL	77.1%	11.8%	6.3%	2.4%	2.4%	552
	COLLEGE+	68.2%	20.3%	6.2%	2.9%	2.4%	238
1993	LT HIGH SCHOOL	76.0%	14.8%	5.3%	.9%	3.0%	179
	HIGH SCHOOL	80.5%	11.3%	4.6%	2.5%	1.0%	570
	COLLEGE+	71.8%	17.3%	5.9%	3.1%	1.9%	311
1994	LT HIGH SCHOOL	79.8%	8.6%	7.3%	3.2%	1.1%	335
	HIGH SCHOOL	81.0%	11.8%	4.7%	1.7%	.8%	1117
	COLLEGE+	74.0%	15.1%	7.5%	1.6%	1.7%	569
1996	LT HIGH SCHOOL	82.6%	8.4%	4.6%	2.4%	2.0%	296
	HIGH SCHOOL	81.1%	12.5%	4.3%	1.2%	.8%	1032
	COLLEGE+	67.3%	21.6%	6.4%	1.8%	2.9%	580
1998	LT HIGH SCHOOL	83.4%	9.8%	3.1%	2.1%	1.6%	282
	HIGH SCHOOL	80.7%	10.9%	5.5%	2.2%	.8%	988
	COLLEGE+	75.3%	13.7%	6.4%	2.3%	2.3%	611
2000	LT HIGH SCHOOL	81.0%	8.7%	6.5%	3.1%	.7%	297
	HIGH SCHOOL	80.2%	9.2%	6.7%	2.2%	1.7%	994
	COLLEGE+	72.7%	14.5%	8.6%	2.4%	1.8%	551

SEX WITH PERSON OTHER THAN SPOUSE (CONTINUED)

SURVEY YEAR	EDUCATION	ALWAYS WRONG	ALMST ALWAYS WRG	SOMETIMES WRONG	NOT WRONG AT ALL	DK	Total
2002	LT HIGH SCHOOL	75.4%	10.2%	4.2%	5.3%	4.9%	147
	HIGH SCHOOL	84.3%	9.2%	3.8%	1.8%	.9%	490
	COLLEGE+	75.4%	18.8%	4.5%	.6%	.8%	297
2004	LT HIGH SCHOOL	89.8%	3.5%	2.2%	3.5%	.9%	104
	HIGH SCHOOL	84.4%	9.0%	4.4%	1.6%	.6%	471
	COLLEGE+	73.9%	18.1%	5.7%	1.2%	1.1%	299
2006	LT HIGH SCHOOL	87.5%	4.4%	5.3%	2.6%	.2%	299
	HIGH SCHOOL	82.0%	10.5%	4.6%	1.4%	1.4%	1015
	COLLEGE+	77.1%	14.1%	6.3%	1.5%	.9%	674
2008	LT HIGH SCHOOL	91.3%	3.4%	3.2%	1.2%	.9%	190
	HIGH SCHOOL	86.5%	6.5%	5.3%	.7%	1.0%	699
	COLLEGE+	75.0%	15.2%	6.1%	2.3%	1.4%	462
2010	LT HIGH SCHOOL	81.5%	9.2%	7.2%	2.2%	0.0%	184
	HIGH SCHOOL	83.6%	7.7%	5.8%	1.8%	1.2%	633
	COLLEGE+	70.5%	19.7%	6.6%	2.1%	1.0%	456
2012	LT HIGH SCHOOL	85.2%	8.1%	5.8%	0.0%	.9%	194
	HIGH SCHOOL	85.1%	8.1%	4.8%	.9%	1.1%	638
	COLLEGE+	73.1%	16.3%	6.5%	2.2%	1.9%	468

HOMOSEXUAL SEX RELATIONS

SURVEY YEAR	EDUCATION	ALWAYS WRONG	ALMST ALWAYS WRG	SOMETIMES WRONG	NOT WRONG AT ALL	OTHER	DK	Total
1973	LT HIGH SCHOOL	86.7%	3.5%	3.1%	2.8%	.7%	3.2%	547
	HIGH SCHOOL	66.0%	6.7%	8.1%	13.2%	2.7%	3.2%	727
	COLLEGE+	39.3%	13.8%	16.3%	23.1%	2.4%	5.1%	208
1974	LT HIGH SCHOOL	78.3%	3.1%	5.1%	7.8%	1.4%	4.3%	515
	HIGH SCHOOL	64.4%	6.1%	8.9%	12.0%	3.6%	4.9%	732
	COLLEGE+	44.6%	7.7%	12.4%	23.1%	6.7%	5.5%	236
1976	LT HIGH SCHOOL	81.2%	2.7%	4.5%	7.2%	0.0%	4.4%	513
	HIGH SCHOOL	66.1%	8.2%	6.9%	15.2%	0.0%	3.6%	746
	COLLEGE+	41.9%	6.7%	16.7%	31.5%	0.0%	3.3%	224
1977	LT HIGH SCHOOL	80.8%	3.6%	4.5%	7.1%	0.0%	4.0%	529
	HIGH SCHOOL	69.1%	4.8%	7.6%	14.4%	0.0%	4.1%	750
	COLLEGE+	48.0%	11.7%	12.2%	23.1%	0.0%	5.0%	236
1980	LT HIGH SCHOOL	80.0%	4.0%	4.1%	7.9%	0.0%	4.0%	435
	HIGH SCHOOL	71.5%	7.0%	6.0%	11.8%	0.0%	3.6%	764
	COLLEGE+	53.1%	4.9%	7.4%	28.3%	0.0%	6.3%	262
1982	LT HIGH SCHOOL	82.6%	3.0%	2.7%	8.4%	0.0%	3.3%	428
	HIGH SCHOOL	72.2%	5.1%	6.2%	12.0%	0.0%	4.5%	803
	COLLEGE+	50.0%	6.7%	12.4%	27.1%	0.0%	3.9%	263
1984	LT HIGH SCHOOL	86.2%	1.9%	2.3%	6.3%	0.0%	3.3%	386
	HIGH SCHOOL	73.4%	4.8%	6.5%	11.8%	0.0%	3.4%	790
	COLLEGE+	51.4%	6.4%	13.6%	24.3%	0.0%	4.3%	289
1985	LT HIGH SCHOOL	84.4%	2.6%	1.5%	8.2%	0.0%	3.3%	404
	HIGH SCHOOL	76.6%	3.3%	6.2%	11.8%	0.0%	2.1%	808
	COLLEGE+	52.0%	7.8%	15.1%	20.8%	0.0%	4.2%	318
1987	LT HIGH SCHOOL	89.0%	1.2%	3.3%	5.2%	0.0%	1.3%	338
	HIGH SCHOOL	77.7%	4.5%	5.0%	10.0%	0.0%	2.9%	780
	COLLEGE+	57.1%	5.7%	12.1%	22.4%	0.0%	2.8%	330
1988	LT HIGH SCHOOL	84.2%	3.5%	4.6%	3.7%	0.0%	4.1%	245
	HIGH SCHOOL	79.5%	4.0%	3.4%	10.1%	0.0%	3.1%	520
	COLLEGE+	53.0%	5.8%	10.8%	27.4%	0.0%	3.0%	211
1989	LT HIGH SCHOOL	83.6%	1.9%	2.8%	8.2%	0.0%	3.5%	219
	HIGH SCHOOL	73.2%	3.3%	5.8%	12.4%	0.0%	5.3%	566
	COLLEGE+	53.5%	6.7%	9.7%	26.1%	0.0%	4.0%	243
1990	LT HIGH SCHOOL	85.9%	4.2%	1.1%	4.8%	0.0%	4.0%	188
	HIGH SCHOOL	75.7%	4.2%	4.9%	11.2%	0.0%	4.0%	493
	COLLEGE+	55.6%	6.4%	10.7%	21.1%	0.0%	6.2%	224
1991	LT HIGH SCHOOL	88.3%	2.5%	1.4%	5.2%	0.0%	2.7%	195
	HIGH SCHOOL	74.3%	3.1%	2.8%	13.1%	0.0%	6.7%	550
	COLLEGE+	55.1%	5.6%	8.0%	23.4%	0.0%	7.8%	238
1993	LT HIGH SCHOOL	75.9%	3.0%	3.6%	13.7%	0.0%	3.9%	178
	HIGH SCHOOL	68.5%	3.6%	6.9%	15.4%	0.0%	5.6%	569
	COLLEGE+	43.8%	5.3%	10.4%	34.6%	0.0%	5.9%	311
1994	LT HIGH SCHOOL	76.3%	3.4%	3.1%	10.8%	0.0%	6.5%	335
	HIGH SCHOOL	66.9%	3.6%	5.0%	19.6%	0.0%	4.8%	1117
	COLLEGE+	50.7%	3.3%	7.8%	31.5%	0.0%	6.7%	568
1996	LT HIGH SCHOOL	69.9%	5.2%	3.9%	15.0%	0.0%	6.1%	294
	HIGH SCHOOL	60.4%	4.5%	4.4%	24.3%	0.0%	6.3%	1029
	COLLEGE+	44.4%	4.9%	8.5%	34.9%	0.0%	7.2%	574
1998	LT HIGH SCHOOL	73.8%	4.1%	2.5%	15.1%	0.0%	4.5%	281
	HIGH SCHOOL	55.2%	6.3%	6.2%	24.8%	0.0%	7.5%	988
	COLLEGE+	44.6%	5.0%	9.9%	33.7%	0.0%	6.8%	610

HOMOSEXUAL SEX RELATIONS (CONTINUED)

SURVEY YEAR	EDUCATION	ALWAYS WRONG	ALMST ALWAYS WRG	SOMETIMES WRONG	NOT WRONG AT ALL	OTHER	DK	Total
2000	LT HIGH SCHOOL	69.9%	3.7%	4.4%	15.9%	0.0%	6.1%	297
	HIGH SCHOOL	54.9%	4.2%	7.1%	26.5%	0.0%	7.3%	994
	COLLEGE+	44.1%	4.2%	9.6%	32.0%	0.0%	10.0%	548
2002	LT HIGH SCHOOL	68.4%	3.8%	3.4%	15.6%	0.0%	8.7%	147
	HIGH SCHOOL	56.8%	5.1%	5.1%	30.2%	0.0%	2.7%	488
	COLLEGE+	41.5%	5.3%	12.1%	38.7%	0.0%	2.5%	296
2004	LT HIGH SCHOOL	72.3%	4.0%	4.0%	14.3%	0.0%	5.4%	104
	HIGH SCHOOL	62.2%	4.2%	5.2%	25.5%	0.0%	2.9%	466
	COLLEGE+	42.5%	5.7%	10.1%	40.6%	0.0%	1.1%	299
2006	LT HIGH SCHOOL	68.6%	5.7%	3.3%	18.0%	0.0%	4.4%	298
	HIGH SCHOOL	58.2%	3.2%	6.7%	27.8%	0.0%	4.1%	1007
	COLLEGE+	41.1%	6.4%	7.4%	41.6%	0.0%	3.4%	670
2008	LT HIGH SCHOOL	65.8%	4.6%	3.9%	18.8%	0.0%	6.8%	188
	HIGH SCHOOL	53.7%	2.2%	6.8%	32.5%	0.0%	4.7%	692
	COLLEGE+	37.2%	3.3%	6.6%	48.1%	0.0%	4.8%	460
2010	LT HIGH SCHOOL	61.1%	4.5%	5.9%	27.0%	0.0%	1.5%	184
	HIGH SCHOOL	48.4%	3.3%	7.0%	37.6%	0.0%	3.6%	625
	COLLEGE+	31.2%	3.4%	9.2%	51.7%	0.0%	4.4%	452
2012	LT HIGH SCHOOL	56.8%	5.6%	10.8%	20.2%	0.0%	6.5%	194
	HIGH SCHOOL	46.4%	2.5%	6.9%	40.3%	0.0%	3.9%	627
	COLLEGE+	33.9%	1.8%	6.5%	52.2%	0.0%	5.7%	469

HOMOSEXUALS SHOULD HAVE RIGHT TO MARRY

SURVEY YEAR	EDUCATION	STRONGLY AGREE	AGREE	NEITHER AGREE NOR DISAGREE	DISAGREE	STRONGLY DISAGREE	CANT CHOOSE	Total
1988	LT HIGH SCHOOL	1.8%	7.2%	8.6%	25.6%	47.9%	8.9%	333
	HIGH SCHOOL	1.8%	6.9%	15.4%	23.7%	46.3%	5.8%	757
	COLLEGE+	5.4%	13.2%	17.0%	25.1%	35.5%	3.7%	302
2004	LT HIGH SCHOOL	10.1%	9.8%	13.6%	18.8%	44.6%	3.0%	124
	HIGH SCHOOL	9.4%	18.6%	13.7%	19.5%	36.9%	2.0%	602
	COLLEGE+	15.0%	20.9%	13.8%	20.9%	28.2%	1.2%	480
2006	LT HIGH SCHOOL	10.2%	18.9%	12.3%	14.3%	42.8%	1.4%	299
	HIGH SCHOOL	13.6%	19.0%	14.3%	17.1%	35.5%	.5%	1014
	COLLEGE+	19.3%	22.3%	12.5%	14.2%	31.0%	.7%	677
2008	LT HIGH SCHOOL	9.6%	18.6%	9.7%	20.2%	39.6%	2.3%	191
	HIGH SCHOOL	11.8%	24.7%	13.5%	14.4%	34.5%	1.0%	701
	COLLEGE+	22.7%	24.2%	13.3%	15.1%	24.5%	.2%	463
2010	LT HIGH SCHOOL	8.1%	25.6%	14.0%	22.0%	29.2%	1.0%	186
	HIGH SCHOOL	20.5%	24.5%	13.9%	14.0%	26.5%	.7%	635
	COLLEGE+	26.6%	25.8%	10.4%	14.7%	20.8%	1.7%	454
2012	LT HIGH SCHOOL	15.0%	15.9%	13.7%	18.1%	34.6%	2.6%	189
	HIGH SCHOOL	23.6%	24.5%	11.3%	14.2%	25.2%	1.1%	638
	COLLEGE+	30.6%	25.1%	11.8%	12.0%	19.9%	.6%	470

BIRTH CONTROL TO TEENAGERS 14-16

SURVEY YEAR	EDUCATION	STRONGLY AGREE	AGREE	DISAGREE	STRONGLY DISAGREE	DK	Total
1986	LT HIGH SCHOOL	21.9%	27.2%	25.7%	21.5%	3.7%	382
	HIGH SCHOOL	20.7%	36.3%	25.3%	15.8%	1.9%	777
	COLLEGE+	26.9%	35.5%	22.3%	13.5%	1.8%	307
1988	LT HIGH SCHOOL	25.8%	22.5%	26.4%	19.4%	5.9%	243
	HIGH SCHOOL	27.3%	30.3%	22.2%	16.9%	3.3%	514
	COLLEGE+	28.1%	36.2%	18.2%	13.2%	4.3%	225
1989	LT HIGH SCHOOL	23.1%	23.5%	24.9%	24.9%	3.5%	219
	HIGH SCHOOL	25.2%	28.3%	25.3%	19.2%	1.9%	552
	COLLEGE+	35.2%	29.2%	18.6%	15.4%	1.7%	240
1990	LT HIGH SCHOOL	25.5%	24.3%	23.8%	18.3%	8.1%	183
	HIGH SCHOOL	27.6%	32.0%	24.7%	12.8%	3.0%	504
	COLLEGE+	29.1%	33.4%	19.1%	15.8%	2.6%	248
1991	LT HIGH SCHOOL	26.3%	27.9%	20.6%	23.1%	2.1%	198
	HIGH SCHOOL	24.2%	35.2%	21.3%	16.7%	2.6%	559
	COLLEGE+	31.2%	34.6%	16.3%	16.1%	1.7%	250
1993	LT HIGH SCHOOL	22.5%	26.9%	27.2%	16.5%	6.9%	183
	HIGH SCHOOL	29.8%	31.3%	18.8%	18.2%	1.8%	578
	COLLEGE+	21.7%	31.0%	26.6%	17.8%	3.0%	312
1994	LT HIGH SCHOOL	23.6%	32.8%	19.1%	21.1%	3.5%	312
	HIGH SCHOOL	26.1%	28.0%	22.9%	20.9%	2.2%	1044
	COLLEGE+	26.9%	31.6%	19.8%	19.9%	1.9%	592
1996	LT HIGH SCHOOL	36.4%	23.6%	16.7%	17.6%	5.7%	284
	HIGH SCHOOL	28.0%	28.1%	22.5%	18.9%	2.6%	1097
	COLLEGE+	25.7%	34.8%	19.6%	17.5%	2.4%	589
1998	LT HIGH SCHOOL	25.2%	27.9%	22.3%	19.3%	5.3%	262
	HIGH SCHOOL	23.9%	30.7%	21.3%	21.2%	2.8%	1009
	COLLEGE+	29.0%	29.3%	17.7%	20.0%	3.9%	602
2000	LT HIGH SCHOOL	32.4%	28.0%	19.3%	16.1%	4.3%	297
	HIGH SCHOOL	26.2%	28.4%	20.2%	23.2%	2.0%	1006
	COLLEGE+	28.6%	34.4%	17.8%	17.6%	1.6%	555
2002	LT HIGH SCHOOL	33.2%	19.0%	18.5%	25.9%	3.4%	129
	HIGH SCHOOL	30.5%	27.8%	17.8%	22.7%	1.2%	508
	COLLEGE+	28.0%	24.8%	22.7%	22.7%	1.7%	263
2004	LT HIGH SCHOOL	19.8%	25.2%	27.0%	25.4%	2.6%	106
	HIGH SCHOOL	21.1%	27.9%	28.3%	20.9%	1.9%	487
	COLLEGE+	26.5%	32.7%	18.2%	20.3%	2.3%	307
2006	LT HIGH SCHOOL	29.5%	26.0%	25.7%	16.6%	2.2%	262
	HIGH SCHOOL	25.6%	27.6%	22.0%	23.2%	1.6%	1000
	COLLEGE+	22.2%	31.0%	26.3%	19.4%	1.2%	726
2008	LT HIGH SCHOOL	27.8%	23.7%	24.6%	23.9%	0.0%	88
	HIGH SCHOOL	23.0%	32.3%	20.2%	21.8%	2.7%	312
	COLLEGE+	20.5%	38.2%	21.1%	19.4%	.7%	238
2010	LT HIGH SCHOOL	25.2%	28.4%	24.8%	18.2%	3.4%	214
	HIGH SCHOOL	24.0%	32.6%	26.1%	16.4%	.9%	720
	COLLEGE+	22.8%	36.8%	23.8%	15.0%	1.6%	496
2012	LT HIGH SCHOOL	19.9%	39.5%	23.3%	15.6%	1.8%	184
	HIGH SCHOOL	24.8%	30.5%	25.4%	17.0%	2.3%	670
	COLLEGE+	23.4%	34.0%	24.1%	16.9%	1.7%	455

SEX EDUCATION IN PUBLIC SCHOOLS

SURVEY YEAR	EDUCATION	FAVOR	OPPOSE	DK	Total
1974	LT HIGH SCHOOL	64.0%	29.9%	6.2%	482
	HIGH SCHOOL	85.4%	11.4%	3.2%	709
	COLLEGE+	94.7%	5.3%	0.0%	236
1975	LT HIGH SCHOOL	63.5%	31.2%	5.4%	500
	HIGH SCHOOL	82.1%	15.2%	2.7%	724
	COLLEGE+	92.0%	6.1%	1.9%	211
1977	LT HIGH SCHOOL	61.4%	34.9%	3.7%	508
	HIGH SCHOOL	82.9%	15.2%	1.8%	739
	COLLEGE+	90.3%	9.1%	.6%	238
1982	LT HIGH SCHOOL	67.1%	28.8%	4.1%	410
	HIGH SCHOOL	88.3%	9.2%	2.5%	784
	COLLEGE+	90.7%	7.9%	1.4%	263
1983	LT HIGH SCHOOL	70.5%	24.9%	4.5%	395
	HIGH SCHOOL	86.3%	11.4%	2.3%	835
	COLLEGE+	93.9%	5.0%	1.1%	321
1985	LT HIGH SCHOOL	68.3%	27.0%	4.8%	384
	HIGH SCHOOL	86.1%	12.1%	1.8%	792
	COLLEGE+	92.5%	6.2%	1.3%	313
1986	LT HIGH SCHOOL	68.1%	27.5%	4.3%	366
	HIGH SCHOOL	85.4%	12.3%	2.3%	759
	COLLEGE+	92.8%	5.4%	1.8%	303
1988	LT HIGH SCHOOL	71.8%	24.7%	3.5%	235
	HIGH SCHOOL	88.1%	8.8%	3.1%	497
	COLLEGE+	93.3%	5.7%	1.0%	222
1989	LT HIGH SCHOOL	69.2%	23.6%	7.2%	203
	HIGH SCHOOL	88.0%	10.2%	1.9%	542
	COLLEGE+	92.9%	5.1%	1.9%	234
1990	LT HIGH SCHOOL	75.9%	19.5%	4.7%	174
	HIGH SCHOOL	89.9%	8.6%	1.5%	495
	COLLEGE+	93.6%	4.9%	1.5%	244
1991	LT HIGH SCHOOL	77.1%	19.7%	3.2%	191
	HIGH SCHOOL	86.5%	10.2%	3.3%	541
	COLLEGE+	88.5%	10.4%	1.1%	247
1993	LT HIGH SCHOOL	76.7%	19.3%	4.0%	176
	HIGH SCHOOL	84.8%	12.9%	2.3%	567
	COLLEGE+	88.0%	9.9%	2.0%	307
1994	LT HIGH SCHOOL	74.1%	21.0%	4.9%	297
	HIGH SCHOOL	87.7%	10.5%	1.9%	1029
	COLLEGE+	89.2%	8.4%	2.4%	574
1996	LT HIGH SCHOOL	73.3%	23.1%	3.7%	272
	HIGH SCHOOL	86.6%	10.8%	2.5%	1071
	COLLEGE+	88.4%	10.0%	1.6%	576
1998	LT HIGH SCHOOL	75.2%	21.0%	3.8%	252
	HIGH SCHOOL	86.5%	11.4%	2.1%	986
	COLLEGE+	87.4%	11.3%	1.3%	595
2000	LT HIGH SCHOOL	76.2%	20.7%	3.1%	288
	HIGH SCHOOL	86.4%	11.3%	2.2%	982
	COLLEGE+	88.1%	10.4%	1.5%	544
2002	LT HIGH SCHOOL	71.1%	25.0%	3.9%	124
	HIGH SCHOOL	88.9%	9.9%	1.2%	503
	COLLEGE+	88.5%	9.3%	2.1%	257
2004	LT HIGH SCHOOL	80.3%	16.9%	2.7%	103
	HIGH SCHOOL	90.8%	8.1%	1.1%	480
	COLLEGE+	87.2%	11.8%	1.0%	304

SEX EDUCATION IN PUBLIC SCHOOLS (CONTINUED)

SURVEY YEAR	EDUCATION	FAVOR	OPPOSE	DK	Total
2006	LT HIGH SCHOOL	83.8%	14.2%	2.0%	256
	HIGH SCHOOL	87.5%	10.5%	2.0%	982
	COLLEGE+	89.6%	9.6%	.7%	721
2008	LT HIGH SCHOOL	84.7%	12.6%	2.7%	187
	HIGH SCHOOL	89.9%	8.8%	1.3%	670
	COLLEGE+	94.0%	4.8%	1.2%	462
2010	LT HIGH SCHOOL	82.2%	15.5%	2.3%	210
	HIGH SCHOOL	89.3%	10.4%	.4%	716
	COLLEGE+	91.6%	7.2%	1.2%	488
2012	LT HIGH SCHOOL	79.2%	16.2%	4.6%	177
	HIGH SCHOOL	91.8%	6.4%	1.8%	658
	COLLEGE+	89.8%	9.7%	.5%	450

FEELINGS ABOUT PORNOGRAPHY LAWS

SURVEY YEAR	EDUCATION	ILLEGAL TO ALL	ILLEGAL UNDER 18	LEGAL	DK	Total
1973	LT HIGH SCHOOL	45.6%	43.5%	8.0%	3.0%	545
	HIGH SCHOOL	39.8%	49.2%	10.0%	1.0%	728
	COLLEGE+	33.0%	54.3%	11.2%	1.5%	209
1975	LT HIGH SCHOOL	46.8%	40.3%	11.1%	1.9%	529
	HIGH SCHOOL	39.5%	50.7%	8.4%	1.4%	744
	COLLEGE+	26.4%	54.1%	18.8%	.6%	215
1976	LT HIGH SCHOOL	48.4%	40.9%	7.8%	2.9%	517
	HIGH SCHOOL	36.9%	54.3%	7.1%	1.6%	751
	COLLEGE+	27.5%	60.7%	11.3%	.4%	224
1978	LT HIGH SCHOOL	51.9%	38.8%	7.7%	1.6%	462
	HIGH SCHOOL	42.9%	50.5%	6.1%	.5%	819
	COLLEGE+	29.6%	59.0%	11.0%	.4%	248
1980	LT HIGH SCHOOL	51.1%	41.4%	4.6%	2.9%	435
	HIGH SCHOOL	36.5%	57.1%	5.3%	1.1%	765
	COLLEGE+	30.0%	57.4%	10.7%	1.9%	264
1983	LT HIGH SCHOOL	49.8%	42.9%	4.3%	3.1%	413
	HIGH SCHOOL	41.3%	53.3%	4.7%	.7%	855
	COLLEGE+	30.8%	63.6%	5.6%	0.0%	325
1984	LT HIGH SCHOOL	49.9%	43.6%	4.0%	2.5%	386
	HIGH SCHOOL	39.3%	56.5%	3.4%	.9%	789
	COLLEGE+	32.5%	63.0%	4.5%	0.0%	288
1986	LT HIGH SCHOOL	47.6%	46.4%	3.4%	2.6%	382
	HIGH SCHOOL	41.2%	55.5%	2.8%	.5%	779
	COLLEGE+	35.7%	60.2%	3.8%	.3%	307
1987	LT HIGH SCHOOL	47.1%	47.2%	4.5%	1.2%	338
	HIGH SCHOOL	38.2%	56.8%	3.9%	1.0%	783
	COLLEGE+	33.5%	61.2%	4.1%	1.2%	336
1988	LT HIGH SCHOOL	55.0%	34.5%	6.2%	4.3%	223
	HIGH SCHOOL	41.5%	53.0%	4.3%	1.2%	567
	COLLEGE+	33.9%	59.7%	5.4%	1.0%	206
1989	LT HIGH SCHOOL	49.5%	41.2%	7.1%	2.1%	222
	HIGH SCHOOL	38.4%	58.3%	2.8%	.6%	544
	COLLEGE+	36.3%	56.4%	5.9%	1.4%	252
1990	LT HIGH SCHOOL	50.1%	42.4%	3.9%	3.6%	193
	HIGH SCHOOL	39.1%	55.2%	4.8%	.9%	484
	COLLEGE+	34.0%	57.5%	8.0%	.5%	213
1991	LT HIGH SCHOOL	46.7%	45.4%	6.6%	1.4%	194
	HIGH SCHOOL	40.7%	54.9%	3.3%	1.1%	560
	COLLEGE+	33.4%	60.1%	4.7%	1.8%	261
1993	LT HIGH SCHOOL	46.8%	47.1%	4.6%	1.4%	184
	HIGH SCHOOL	42.8%	52.4%	3.0%	1.9%	565
	COLLEGE+	31.3%	65.1%	3.1%	.5%	310
1994	LT HIGH SCHOOL	44.3%	48.1%	6.4%	1.2%	327
	HIGH SCHOOL	36.1%	60.6%	2.5%	.8%	1064
	COLLEGE+	31.5%	66.3%	1.9%	.3%	579
1996	LT HIGH SCHOOL	47.9%	42.9%	5.6%	3.6%	272
	HIGH SCHOOL	36.9%	59.3%	3.0%	.7%	1070
	COLLEGE+	30.6%	65.2%	3.9%	.3%	568
1998	LT HIGH SCHOOL	43.5%	50.1%	4.5%	1.9%	293
	HIGH SCHOOL	38.0%	57.0%	3.9%	1.1%	1025
	COLLEGE+	33.2%	64.1%	2.5%	.2%	557
2000	LT HIGH SCHOOL	43.2%	51.2%	3.7%	1.9%	283
	HIGH SCHOOL	36.4%	60.1%	2.8%	.8%	1012
	COLLEGE+	28.7%	67.4%	3.1%	.8%	575

FEELINGS ABOUT PORNOGRAPHY LAWS
(CONTINUED)

SURVEY YEAR	EDUCATION	ILLEGAL TO ALL	ILLEGAL UNDER 18	LEGAL	DK	Total
2002	LT HIGH SCHOOL	49.3%	46.5%	3.2%	.9%	121
	HIGH SCHOOL	37.6%	56.5%	5.5%	.5%	479
	COLLEGE+	36.4%	59.2%	3.5%	1.0%	289
2004	LT HIGH SCHOOL	50.5%	42.7%	5.1%	1.7%	111
	HIGH SCHOOL	39.2%	57.0%	3.4%	.4%	457
	COLLEGE+	32.0%	63.4%	4.6%	0.0%	309
2006	LT HIGH SCHOOL	54.8%	39.6%	3.7%	1.9%	308
	HIGH SCHOOL	37.5%	58.3%	3.5%	.7%	979
	COLLEGE+	32.3%	64.5%	2.6%	.5%	712
2008	LT HIGH SCHOOL	36.3%	58.4%	4.1%	1.3%	203
	HIGH SCHOOL	31.9%	65.2%	2.8%	.2%	668
	COLLEGE+	31.6%	64.0%	4.1%	.3%	478
2010	LT HIGH SCHOOL	38.0%	53.6%	7.0%	1.4%	216
	HIGH SCHOOL	30.7%	64.8%	3.9%	.7%	695
	COLLEGE+	27.2%	69.2%	3.0%	.6%	464
2012	LT HIGH SCHOOL	32.5%	58.5%	3.9%	5.1%	223
	HIGH SCHOOL	32.3%	64.6%	2.9%	.1%	617
	COLLEGE+	32.6%	64.0%	3.3%	.1%	488

SEEN X-RATED MOVIE IN LAST YEAR

SURVEY YEAR	EDUCATION	YES	NO	DK	Total
1973	LT HIGH SCHOOL	17.6%	81.4%	1.0%	546
	HIGH SCHOOL	29.9%	69.6%	.4%	728
	COLLEGE+	36.2%	63.1%	.7%	211
1975	LT HIGH SCHOOL	13.0%	86.6%	.4%	529
	HIGH SCHOOL	21.2%	78.3%	.4%	744
	COLLEGE+	26.8%	72.1%	1.1%	215
1976	LT HIGH SCHOOL	14.2%	85.4%	.4%	518
	HIGH SCHOOL	20.4%	79.5%	.1%	748
	COLLEGE+	26.3%	73.7%	0.0%	225
1978	LT HIGH SCHOOL	9.8%	89.7%	.5%	462
	HIGH SCHOOL	15.9%	83.6%	.5%	820
	COLLEGE+	21.6%	77.8%	.6%	248
1980	LT HIGH SCHOOL	9.9%	90.0%	.1%	434
	HIGH SCHOOL	17.8%	81.8%	.4%	765
	COLLEGE+	18.8%	80.6%	.6%	264
1983	LT HIGH SCHOOL	16.3%	82.6%	1.1%	412
	HIGH SCHOOL	21.6%	78.3%	.1%	856
	COLLEGE+	18.4%	81.3%	.3%	325
1984	LT HIGH SCHOOL	18.8%	80.7%	.5%	388
	HIGH SCHOOL	26.5%	73.5%	0.0%	789
	COLLEGE+	22.9%	77.1%	0.0%	289
1986	LT HIGH SCHOOL	19.9%	80.1%	0.0%	382
	HIGH SCHOOL	28.4%	71.3%	.3%	776
	COLLEGE+	23.4%	75.7%	.8%	307

SEEN X-RATED MOVIE IN LAST YEAR
(CONTINUED)

SURVEY YEAR	EDUCATION	YES	NO	DK	Total
1987	LT HIGH SCHOOL	23.7%	76.1%	.1%	338
	HIGH SCHOOL	30.9%	68.9%	.2%	783
	COLLEGE+	25.9%	73.3%	.8%	335
1988	LT HIGH SCHOOL	28.1%	71.2%	.7%	225
	HIGH SCHOOL	27.8%	71.8%	.4%	567
	COLLEGE+	25.8%	73.6%	.5%	206
1989	LT HIGH SCHOOL	16.9%	82.4%	.7%	221
	HIGH SCHOOL	28.5%	70.5%	.9%	544
	COLLEGE+	20.1%	79.7%	.2%	252
1990	LT HIGH SCHOOL	20.9%	78.0%	1.1%	193
	HIGH SCHOOL	24.3%	75.7%	0.0%	481
	COLLEGE+	23.8%	75.7%	.5%	213
1991	LT HIGH SCHOOL	19.3%	80.7%	0.0%	195
	HIGH SCHOOL	27.8%	72.0%	.3%	559
	COLLEGE+	23.7%	76.3%	0.0%	260
1993	LT HIGH SCHOOL	18.1%	81.0%	.9%	184
	HIGH SCHOOL	19.1%	80.8%	.1%	565
	COLLEGE+	23.2%	76.5%	.3%	310
1994	LT HIGH SCHOOL	20.9%	79.1%	0.0%	248
	HIGH SCHOOL	25.6%	74.3%	.1%	793
	COLLEGE+	18.5%	80.6%	.9%	436
1996	LT HIGH SCHOOL	28.9%	70.1%	1.0%	272
	HIGH SCHOOL	27.8%	71.8%	.4%	1067
	COLLEGE+	25.0%	74.8%	.3%	568
1998	LT HIGH SCHOOL	24.2%	74.9%	.9%	293
	HIGH SCHOOL	27.4%	72.5%	.1%	1026
	COLLEGE+	20.1%	78.7%	1.3%	557
2000	LT HIGH SCHOOL	22.9%	76.9%	.2%	286
	HIGH SCHOOL	25.8%	73.9%	.3%	1009
	COLLEGE+	23.0%	76.7%	.4%	581
2002	LT HIGH SCHOOL	26.4%	73.6%	0.0%	123
	HIGH SCHOOL	24.8%	75.2%	0.0%	479
	COLLEGE+	20.3%	79.5%	.2%	291
2004	LT HIGH SCHOOL	17.7%	82.3%	0.0%	112
	HIGH SCHOOL	29.4%	70.6%	0.0%	457
	COLLEGE+	24.6%	75.4%	0.0%	309
2006	LT HIGH SCHOOL	19.5%	80.5%	0.0%	308
	HIGH SCHOOL	26.1%	73.7%	.2%	978
	COLLEGE+	18.4%	81.2%	.4%	713
2008	LT HIGH SCHOOL	23.3%	76.1%	.6%	202
	HIGH SCHOOL	25.7%	73.9%	.4%	665
	COLLEGE+	22.2%	77.6%	.3%	478
2010	LT HIGH SCHOOL	24.4%	75.2%	.4%	217
	HIGH SCHOOL	29.1%	70.5%	.4%	694
	COLLEGE+	20.6%	79.4%	0.0%	463
2012	LT HIGH SCHOOL	21.2%	77.7%	1.1%	223
	HIGH SCHOOL	26.8%	72.8%	.3%	619
	COLLEGE+	23.3%	76.7%	0.0%	488