



Property Type: Ranch

Asking Price: **\$15,000,000**

Acreage: 1,000± Acres

Location: Henry Mountains, UT

The King Ranch | Henry Mountains, UT



**FARM & RANCH
GROUP**



ERA Brokers Consolidated and NAI Excel are subsidiaries of Brokers Holdings, LLC. Brokers Holdings owns and operates both residential and commercial brokerages in Utah and Nevada. It operates its residential brokerages under the ERA Brokers Consolidated brand and is licensed in Utah, Nevada, and Arizona. It operates its commercial brokerages under the NAI Excel brand and is licensed in Utah, Nevada, and Idaho.

NO WARRANTY OR REPRESENTATION, EXPRESS OR IMPLIED, IS MADE AS TO THE ACCURACY OF THE INFORMATION CONTAINED HEREIN, AND THE SAME IS SUBMITTED SUBJECT TO ERRORS, OMISSIONS, CHANGE OF PRICE, RENTAL OR OTHER CONDITIONS, PRIOR SALE, LEASE OR FINANCING, OR WITHDRAWAL WITHOUT NOTICE, AND OF ANY SPECIAL LISTING CONDITIONS IMPOSED BY OUR PRINCIPAL. NO WARRANTIES OR REPRESENTATIONS ARE MADE AS TO THE CONDITION OF THE PROPERTY OR ANY HAZARDS CONTAINED THEREIN ARE TO BE IMPLIED. THE INFORMATION PORTRAYED ON THE MAP, WHILE NOT GUARANTEED, HAS BEEN SECURED FROM SOURCES DEEMED RELIABLE. CONSULT A SURVEYOR FOR PRECISE BOUNDARIES.

For more information:

Joby Venuti

NAI Excel

(435) 627-5712

joby@naiexcel.com

intermountainranches.com

29254



Location: **Henry Mountains**

The King Ranch in Garfield and Wayne County, Utah is 125,000 acres located between the Western side of the Henry Mountains, and the Eastern Side of Capitol Reef National Park. The winter grazing permits are for 3,356 AUM's (615 pairs) from November 1 to April 15.

On the 1,000 deeded acres there is a historic cabin located next to a large pond feeding an irrigation system, a bunk house with a generator and well, and approximately 200 acres of irrigated land for cultivation.

The property is a premier big game hunting location with World Class Mule Deer, and the genetically pure Henry Mountain Bison Herd. Record Book Mule Deer (230+”) and Bison come from the Henry Mountain Unit each year.

FOR MORE INFORMATION

<http://helloarti.com/view/29254>

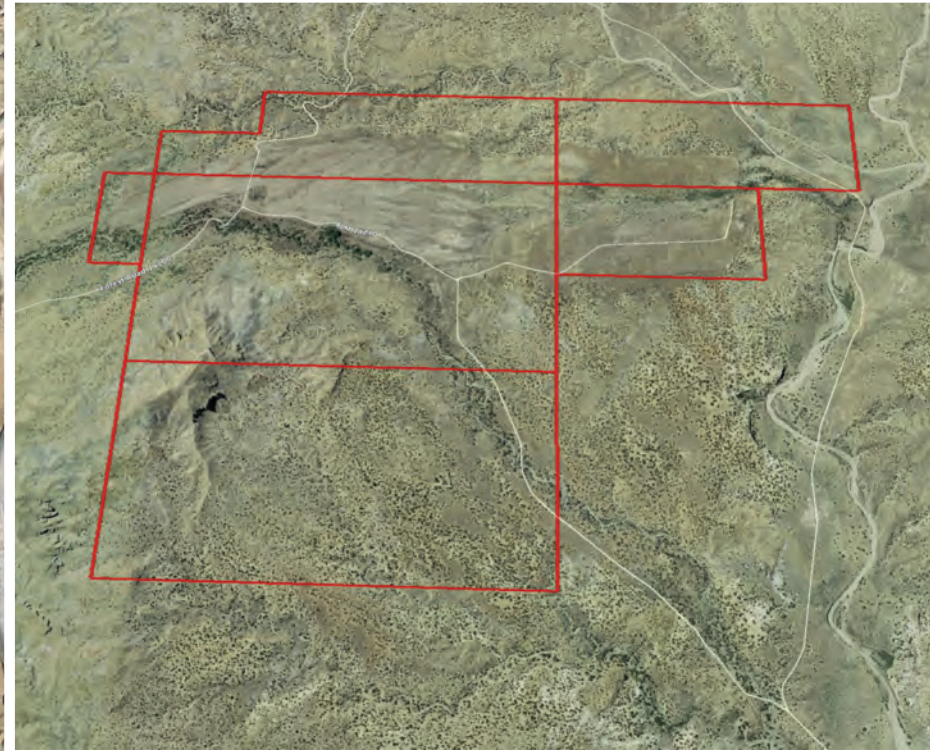


**FARM & RANCH
GROUP**

A collaborative
effort of

NAIExcel
COMMERCIAL REAL ESTATE SERVICES, WORLDWIDE

ERA Brokers
REAL ESTATE CONSOLIDATED



**FARM & RANCH
GROUP**

A collaborative
effort of



Farm & Ranch Group

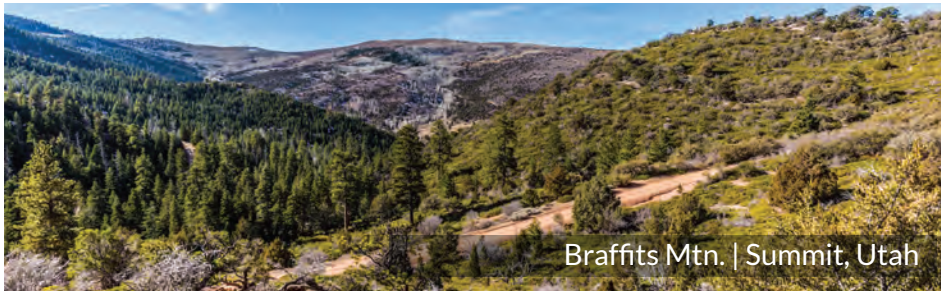
Other Properties Available



Paunsugant Cliffs | Hatch, Utah



Rio Oso Ranch | Montpelier, Idaho



Braffits Mtn. | Summit, Utah



Elk Crossing Ranch - Hatch, Utah

About the Farm & Ranch Group

The Farm and Ranch Specialty Group is a joint venture among qualified agents at ERA Brokers Consolidated and NAI Excel with experience in Farm, Ranch, Recreation, and other large land properties. Instead of using a single channel for property marketing, the Farm and Ranch specialty group utilizes commercial real estate, residential real estate, and land and farm marketing distribution channels to achieve maximum exposure for clients. This joint marketing effort is unique among brokers of large land tracts.

Because of the unique arrangement, the Farm and Ranch Specialty group has tools that add value for our clients, that are uncommon in

the industry. We have full service Geographic Information Systems department that builds custom maps with layers like topography, property boundaries, federal and state land ownership and water features. Projects can then be printed on our advanced 42" plotter. Analysis can also be performed to calculate irrigated acreage, crop production, reservoir, grazing analysis, and best land use practices. Using our mobile app, we can identify and walk property boundaries with clients using GPS technology. Our three in-house graphic designers help build custom marketing packages for the property, and our electronic listing distribution provides access both nationally and internationally.

For more information:



Joby Venuti

NAI Excel

(435) 627-5712

joby@naiexcel.com

www.intermountainranches.com