



**1997  
PRODUCT  
INFORMATION  
GUIDE**

**SPECIFICATIONS  
PERFORMANCE  
STANDARD FEATURES  
OPTIONS  
OPTION PACKAGES**

# FEATURE & BENEFITS

| 1996    |    |    |    |          |    |    |    |           |    |    |    |    |    |    |    |    |    |    |    |    |  |  |
|---------|----|----|----|----------|----|----|----|-----------|----|----|----|----|----|----|----|----|----|----|----|----|--|--|
| JANUARY |    |    |    | FEBRUARY |    |    |    | MARCH     |    |    |    |    |    |    |    |    |    |    |    |    |  |  |
| S       | M  | T  | W  | T        | F  | S  | S  | M         | T  | W  | T  | F  | S  | S  | M  | T  | W  | T  | F  | S  |  |  |
| 1       | 2  | 3  | 4  | 5        | 6  |    |    | 1         | 2  | 3  | 3  | 4  | 5  | 6  | 7  | 8  | 9  | 1  | 2  |    |  |  |
| 7       | 8  | 9  | 10 | 11       | 12 | 13 | 4  | 5         | 6  | 7  | 8  | 9  | 10 | 10 | 11 | 12 | 13 | 14 | 15 | 16 |  |  |
| 14      | 15 | 16 | 17 | 18       | 19 | 20 | 11 | 12        | 13 | 14 | 15 | 16 | 17 | 17 | 18 | 19 | 20 | 21 | 22 | 23 |  |  |
| 21      | 22 | 23 | 24 | 25       | 26 | 27 | 18 | 19        | 20 | 21 | 22 | 23 | 24 | 24 | 25 | 26 | 27 | 28 | 29 | 30 |  |  |
| 28      | 29 | 30 | 31 | 25       | 26 | 27 | 28 | 29        | 31 | 24 | 25 | 26 | 27 | 28 | 29 | 30 |    |    |    |    |  |  |
| APRIL   |    |    |    | MAY      |    |    |    | JUNE      |    |    |    |    |    |    |    |    |    |    |    |    |  |  |
| 1       | 2  | 3  | 4  | 5        | 6  | 1  | 2  | 3         | 4  | 1  |    |    |    |    |    |    |    |    |    |    |  |  |
| 7       | 8  | 9  | 10 | 11       | 12 | 13 | 5  | 6         | 7  | 8  | 9  | 10 | 11 | 2  | 3  | 4  | 5  | 6  | 7  | 8  |  |  |
| 14      | 15 | 16 | 17 | 18       | 19 | 20 | 12 | 13        | 14 | 15 | 16 | 17 | 18 | 9  | 10 | 11 | 12 | 13 | 14 | 15 |  |  |
| 21      | 22 | 23 | 24 | 25       | 26 | 27 | 19 | 20        | 21 | 22 | 23 | 24 | 25 | 16 | 17 | 18 | 19 | 20 | 21 | 22 |  |  |
| 28      | 29 | 30 | 26 | 27       | 28 | 29 | 30 | 31        | 30 | 23 | 24 | 25 | 26 | 27 | 28 | 29 |    |    |    |    |  |  |
| JULY    |    |    |    | AUGUST   |    |    |    | SEPTEMBER |    |    |    |    |    |    |    |    |    |    |    |    |  |  |
| 1       | 2  | 3  | 4  | 5        | 6  | 1  | 2  | 3         | 4  | 1  | 2  | 3  | 4  | 5  | 6  | 7  |    |    |    |    |  |  |
| 7       | 8  | 9  | 10 | 11       | 12 | 13 | 4  | 5         | 6  | 7  | 8  | 9  | 10 | 11 | 12 | 13 | 14 |    |    |    |  |  |
| 14      | 15 | 16 | 17 | 18       | 19 | 20 | 11 | 12        | 13 | 14 | 15 | 16 | 17 | 18 | 19 | 20 | 21 |    |    |    |  |  |
| 21      | 22 | 23 | 24 | 25       | 26 | 27 | 18 | 19        | 20 | 21 | 22 | 23 | 24 | 25 | 26 | 27 | 28 |    |    |    |  |  |
| 28      | 29 | 30 | 31 | 25       | 26 | 27 | 28 | 29        | 30 | 31 | 29 | 30 |    |    |    |    |    |    |    |    |  |  |
| OCTOBER |    |    |    | NOVEMBER |    |    |    | DECEMBER  |    |    |    |    |    |    |    |    |    |    |    |    |  |  |
| 1       | 2  | 3  | 4  | 5        | 1  | 2  | 1  | 2         | 3  | 4  | 5  | 6  | 7  |    |    |    |    |    |    |    |  |  |
| 6       | 7  | 8  | 9  | 10       | 11 | 12 | 3  | 4         | 5  | 6  | 7  | 8  | 9  | 10 | 11 | 12 | 13 | 14 |    |    |  |  |
| 13      | 14 | 15 | 16 | 17       | 18 | 19 | 10 | 11        | 12 | 13 | 14 | 15 | 16 | 17 | 18 | 19 | 20 | 21 |    |    |  |  |
| 20      | 21 | 22 | 23 | 24       | 25 | 26 | 17 | 18        | 19 | 20 | 21 | 22 | 23 | 24 | 25 | 26 | 27 | 28 |    |    |  |  |
| 27      | 28 | 29 | 30 | 31       | 24 | 25 | 26 | 27        | 28 | 29 | 30 | 31 | 29 | 30 | 31 |    |    |    |    |    |  |  |

| 1997    |    |    |    |          |    |    |    |           |    |    |    |    |    |    |    |    |    |    |    |    |
|---------|----|----|----|----------|----|----|----|-----------|----|----|----|----|----|----|----|----|----|----|----|----|
| JANUARY |    |    |    | FEBRUARY |    |    |    | MARCH     |    |    |    |    |    |    |    |    |    |    |    |    |
| S       | M  | T  | W  | T        | F  | S  | S  | M         | T  | W  | T  | F  | S  | S  | M  | T  | W  | T  | F  | S  |
| 1       | 2  | 3  | 4  | 1        | 2  | 3  | 4  | 1         | 2  | 3  | 4  | 5  | 6  | 7  | 8  |    |    |    |    |    |
| 5       | 6  | 7  | 8  | 9        | 10 | 11 | 2  | 3         | 4  | 5  | 6  | 7  | 8  | 9  | 10 | 11 | 12 | 13 | 14 | 15 |
| 12      | 13 | 14 | 15 | 16       | 17 | 18 | 9  | 10        | 11 | 12 | 13 | 14 | 15 | 16 | 17 | 18 | 19 | 20 | 21 | 22 |
| 19      | 20 | 21 | 22 | 23       | 24 | 25 | 16 | 17        | 18 | 19 | 20 | 21 | 22 | 23 | 24 | 25 | 26 | 27 | 28 | 29 |
| 26      | 27 | 28 | 29 | 30       | 31 | 23 | 24 | 25        | 26 | 27 | 28 | 30 | 31 |    |    |    |    |    |    |    |
| APRIL   |    |    |    | MAY      |    |    |    | JUNE      |    |    |    |    |    |    |    |    |    |    |    |    |
| 1       | 2  | 3  | 4  | 5        | 1  | 2  | 3  | 4         | 1  | 2  | 3  | 4  | 5  | 6  | 7  |    |    |    |    |    |
| 6       | 7  | 8  | 9  | 10       | 11 | 12 | 4  | 5         | 6  | 7  | 8  | 9  | 10 | 11 | 12 | 13 | 14 |    |    |    |
| 13      | 14 | 15 | 16 | 17       | 18 | 19 | 11 | 12        | 13 | 14 | 15 | 16 | 17 | 18 | 19 | 20 | 21 |    |    |    |
| 20      | 21 | 22 | 23 | 24       | 25 | 26 | 18 | 19        | 20 | 21 | 22 | 23 | 24 | 25 | 26 | 27 | 28 |    |    |    |
| 27      | 28 | 29 | 30 | 25       | 26 | 27 | 28 | 29        | 30 | 31 | 29 | 30 |    |    |    |    |    |    |    |    |
| JULY    |    |    |    | AUGUST   |    |    |    | SEPTEMBER |    |    |    |    |    |    |    |    |    |    |    |    |
| 1       | 2  | 3  | 4  | 5        | 1  | 2  | 3  | 4         | 1  | 2  | 3  | 4  | 5  | 6  | 7  |    |    |    |    |    |
| 6       | 7  | 8  | 9  | 10       | 11 | 12 | 3  | 4         | 5  | 6  | 7  | 8  | 9  | 10 | 11 | 12 | 13 |    |    |    |
| 13      | 14 | 15 | 16 | 17       | 18 | 19 | 10 | 11        | 12 | 13 | 14 | 15 | 16 | 17 | 18 | 19 | 20 |    |    |    |
| 20      | 21 | 22 | 23 | 24       | 25 | 26 | 17 | 18        | 19 | 20 | 21 | 22 | 23 | 24 | 25 | 26 | 27 |    |    |    |
| 27      | 28 | 29 | 30 | 31       | 24 | 25 | 26 | 27        | 28 | 29 | 30 | 28 | 29 | 30 |    |    |    |    |    |    |
| OCTOBER |    |    |    | NOVEMBER |    |    |    | DECEMBER  |    |    |    |    |    |    |    |    |    |    |    |    |
| 1       | 2  | 3  | 4  | 1        | 2  | 3  | 4  | 1         | 2  | 3  | 4  | 5  | 6  | 7  |    |    |    |    |    |    |
| 5       | 6  | 7  | 8  | 9        | 10 | 11 | 2  | 3         | 4  | 5  | 6  | 7  | 8  | 9  | 10 | 11 | 12 | 13 |    |    |
| 12      | 13 | 14 | 15 | 16       | 17 | 18 | 9  | 10        | 11 | 12 | 13 | 14 | 15 | 14 | 15 | 16 | 17 | 18 | 19 | 20 |
| 19      | 20 | 21 | 22 | 23       | 24 | 25 | 16 | 17        | 18 | 19 | 20 | 21 | 22 | 21 | 22 | 23 | 24 | 25 | 26 | 27 |
| 26      | 27 | 28 | 29 | 30       | 31 | 23 | 24 | 25        | 26 | 27 | 28 | 29 | 28 | 29 | 30 | 31 |    |    |    |    |

- Pro-Line uses a CAD Computer Program enabling the design team to initiate exact drawings with perfect accuracy.
- Fully integrated design/tooling/manufacturing means fresh, innovative ideas. Premium Gel Coat with high gloss retention, for long lasting beautiful finishes.
- Pro-Line uses a 3 oz. skin coat as a print barrier for smooth glass-like surfaces.
- All Pro-Lines are hand-laid for maximum strength and durability.
- High tech. 3610 knitted Fiberglass is used in the layup of Pro-Line boats for maximum strength and superior fiberglass to resin ratio, resulting in strong, lightweight fishing boats.
- All stringers and transoms are installed while the part is still in the mold for perfect alignment and fit. This ensures true performance from the finished product.
- All Pro-Line parts are allowed to cure in the molds to minimize any distortion. This takes time and costs money, but perfection is expected at Pro-Line.
- Pro-Line laminates backing material into every hull and deck built everywhere hardware will be installed.
- Pro-Line fuel tanks are manufactured using only the highest quality marine aluminum. Pro-Line then pressure tests the tanks three times before they are allowed to leave the factory. This ensures years of trouble-free service.
- Pro-Line uses a closed cell foam flotation under the sub-floor and inside the F.I.S.T. stringer systems. Closed cell foam is extremely buoyant and does not absorb water. It also adds strength to the hull and acts as a sound deadener giving you a safer and quieter ride.
- All Pro-Lines are fitted with fiberglass inner liners for rugged durability and easy maintenance.
- Pro-Line boats hull and deck are joined together using polyester bonding compound and epoxy coated stainless fasteners. The gunwale joint is filled with polyurethane sealant to prevent leakage and provide additional adhesion.
- Pro-Line uses Marine Grade Stainless Steel on all of their hardware (cleats, hinges, etc.) for strength and a long lasting luster.
- All Pro-Line wiring is color-coded, heavy gauge wiring that meets or exceeds NMMA requirements. All wiring connections are sealed with heat shrink tubing to protect the connection from the elements. Pro-Line takes this extra step to ensure years of trouble free service.
- Unlike most other corporately owned boat companies, with Pro-Line you can choose your engine brand.
- Pro-Line upholstery and canvas are done in-house to ensure control over quality and cost, guaranteeing the consumer the highest quality product at the best possible price.
- All Pro-Line boats are NMMA certified, which is a higher standard than what the U.S. Coast Guard requires. This helps ensure boating safety and trouble-free service for years to come.
- All Pro-Line boats use the F.I.S.T. (Fiberglass Integrated Structural Technology) Stringer System. F.I.S.T. is a superior boat building process that utilizes a fiberglass stringer system and high density Divinycell Foam coring in place of wood. It's the highest standard for the construction of rugged fishing boats and Pro-Line backs it with a LIFETIME (see footnote) Structural Hull Warranty. The F.I.S.T. system with Divinycell Foam coring eliminates the possibility of rotting wood.
- Pro-Line offers a Lifetime 10 year transferable hull warranty that helps keep the resale value of your boat higher.

*Footnote: Lifetime Structural Hull Warranty is Limited to Original Purchase and Covers Structural Defects. Transferable Refers to the First Ten Years of Coverage and May Be Transferred to a Second Owner.*

# 1997 170 SPORTSMAN

## SPECIFICATIONS

|                             |                |
|-----------------------------|----------------|
| Length Overall              | 17'0"          |
| Beam                        | 7'6"           |
| Draft                       |                |
| Engine Up                   | 12"            |
| Engine Down                 | 30"            |
| Fuel Capacity               | 30 Gal.        |
| Weight (hull only)          | 1530 Lbs.      |
| Weight (for trailer sizing) | 2500 Lbs.      |
| Cockpit Area                | 50 Sq. Ft.     |
| Cockpit Depth               | 22"            |
| Bridge Clearance            |                |
| No Top                      | 3'8"           |
| Max HP                      | 120 HP         |
| Hull Type                   | Modified Vee   |
| O/B Transom Height          | 20"            |
| Baitwell                    | 40 Qt.         |
| Fish Box                    | 80 Qt.         |
| Console Storage             | 6.5 Cubic Feet |

## PERFORMANCE DATA

ENGINE: SEC. TO FUEL SPEED MPG RANGE W.O.T.  
MODEL PLANE CAP. 4000 RPM 4000 RPM 4000 RPM MPH

| ENGINE:    | SEC. TO | FUEL     | SPEED    | MPG      | RANGE     | W.O.T. |
|------------|---------|----------|----------|----------|-----------|--------|
| MODEL      | PLANE   | CAP.     | 4000 RPM | 4000 RPM | 4000 RPM  | MPH    |
| F 90 ELPT  | 3.7     | 30 GALS. | 25 MPH   | 5.0      | 135 MILES | 33-35  |
| M115 ELPTO | 3.0     | 30 GALS. | 30 MPH   | 4.3      | 115 MILES | 36-38  |
| O90 TSLU   | 3.5     | 30 GALS. | 26 MPH   | 4.5      | 120 MILES | 31-33  |
| O115 SLEU  | 4.2     | 30 GALS. | 29 MPH   | 3.5      | 95 MILES  | 36-38  |
| 120 ELPT   | 3       | 30 GALS. | 26 MPH   | 4.5      | 113 MILES | 36-38  |

ALL DATA IS SUBJECT TO CHANGE

# 170 SPORTSMAN

## STANDARD EQUIPMENT

• Anchor and Rope Locker Storage • Battery Tray • Bilge Pump (1250 GPH) and Automatic Float Switch • Casting Deck Fish/Storage Box Insulated • Center Console with Storage • Cleats 8" (3) • Control-Binnacle • Dash Panel with Resettable Breakers • Divinycell Transom • Drink Holders • Electronics Area • Flotation Foam (Closed Cell) • F.I.S.T. - Fiberglass Integrated Structural Technology • Fuel/Water Separator • Full Instrumentation (Fuel, MPH, RPM, Temp., Trim, Volts) • Garboard Drain • Gunnel Trim-Rigid Vinyl • Horn - Electric • Hatches with True Gutter System • Premium Gel Coat • Navigational Lights • NMMA Certified • Non-Skid Deck • Plexiglass Windshield • Rod Racks • Rod Racks, Horizontal • Seats, Captains Chairs • Self Bailing Cockpit • Stainless Steel Deck Hardware Thru Bolted • Stainless Steel (Marine Grade) Steering Wheel • Stainless Steel (Marine Grade) Windshield Grab Rail • Steering, Rotary Helm • Striping Green Color • Tackle Box Built In • Terminal Bar, Helm and Transom • Warranty - Lifetime/10 Years Transferable

## OPTIONAL EQUIPMENT

Dive Ladder (Armstrong) • Lift Kit • Stereo AM/FM Cassette with 2 Speakers • Shrink Wrap • Top, Bimini • Steering - No Feed Back • Stereo AM/FM/CD with 2 speakers • 2 Pair Rod Holders • Console Cover

## OPTION PACKAGES:

### SPORT CONVENIENCE PACKAGE

Bow Cushion • Cockpit Lights (1 Pair) • Dive Platform, Half with Ladder • 12 Volt Receptacle • Springline Cleats 8" (2)

### FISH PACKAGE

Baitwell, Recirculating (No Wash Down) • Rod Holders (2 Pair) • Cooler with Backrest.

### ELECTRONICS PACKAGE

Compass • Depth Finder • VHF Radio with Antenna

# 180 SPORTSMAN

## SPECIFICATIONS

|                             |                    |
|-----------------------------|--------------------|
| Length Overall              | 18'10"             |
| Beam                        | 8'0"               |
| Draft                       |                    |
| Engine Up                   | 13"                |
| Engine Down                 | 28"                |
| Fuel Capacity               | 50 Gal.            |
| Weight (hull only)          | 1700 Lbs.          |
| Weight (for trailer sizing) | 2500 Lbs.          |
| Cockpit Area                | 80 Sq. Ft.         |
| Cockpit Depth               | 21"                |
| Bridge Clearance            |                    |
| No Top                      | 4'7"               |
| Max HP                      | 120 HP             |
| Max Persons/Weight Cap.     | 5 Persons/750 Lbs. |
| Hull Type                   | Modified Vee       |
| O/B Transom Height          | 20"                |
| Baitwell                    | 40 Qts.            |

## PERFORMANCE DATA

| ENGINE: | SEC. TO | FUEL | SPEED    | MPG      | RANGE    | W.O.T. |
|---------|---------|------|----------|----------|----------|--------|
| MODEL   | PLANE   | CAP. | 4000 RPM | 4000 RPM | 4000 RPM | MPH    |

| ENGINE:    | SEC. TO | FUEL     | SPEED    | MPG      | RANGE     | W.O.T. |
|------------|---------|----------|----------|----------|-----------|--------|
| MODEL      | PLANE   | CAP.     | 4000 RPM | 4000 RPM | 4000 RPM  | MPH    |
| F120 ELPT  | 3.2     | 50 GALS. | 27 MPH   | 4.5      | 260 MILES | 34-38  |
| M115 ELPTO | 3.9     | 50 GALS. | 32 MPH   | 3.9      | 175 MILES | 38-40  |
| O115 SLEU  | 4.3     | 50 GALS. | 31 MPH   | 4.4      | 198 MILES | 38-40  |

ALL DATA IS SUBJECT TO CHANGE

# 180 SPORTSMAN

## STANDARD EQUIPMENT

Battery Tray • Bilge Pump (1250 GPH) and Automatic Float Switch • Casting Deck Fish/Storage Box Insulated • Center Console With Storage • Cleats 8" (2) • Control-Binnacle • Dash Panel with Resettable Breakers • Divinycell Foam Core Transom • Drink Holders • Electronics Area • Flotation Foam (Closed Cell) • F.I.S.T. Stringer System • Fuel/Water Separator • Full Instrumentation (Fuel, MPH, RPM, Temp., Trim, Volts) • Garboard Drain • Gunnel Trim-Rigid Vinyl • Hatches with True Gutter System • Horn-Electric • Navigational Lights • Premium Gel Coat • NMMA Certified • Non-Skid Deck • Plexiglass Windshield • Rod Storage Vertical (Console) • Seat, 76 Qts. Flip Flop Cooler • Self Bailing Cockpit • Stainless Steel (Marine Grade) Deck Hardware Thru Bolted • Stainless Steel (Marine Grade) Steering Wheel • Stainless Steel (Marine Grade) Windshield Grab Rail • Steering, Rotary Helm • Striping Color - Green • Tackle Box, Built In • Terminal Bar, Helm and Transom • Warranty - Lifetime/10 Years Transferable

## OPTIONAL EQUIPMENT

Lift Kit • Steering - No Feed Back Cable • Console Cover • Dive Ladder (Armstrong) • Stereo AM/FM Cassette with 2 Speakers • Stereo AM/FM/CD with 2 Speakers • Shrink Wrap • Top, Bimini • Prewiring for Trolling Motor & Poling Platform • Poling Platform Leaning Post

## OPTION PACKAGES:

### SPORT CONVENIENCE PACKAGE

Bow Cushion • Cockpit Lights (1 Pair) • Drive Platform, Half with Ladder • 12 Volt Receptacle • Springline Cleats 8" (2)

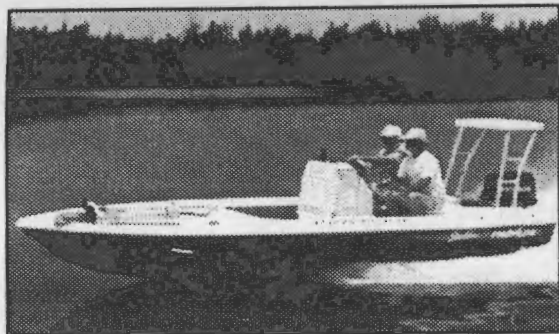
### FISH PACKAGE

• Baitwell - Recirculating (No Wash Down) • Rod Storage, Vertical (Gunnel) • Cooler with Backrest

### ELECTRONICS PACKAGE

• Compass • Depth Finder • VHF Radio w/Antenna

# 183 FLATS



## 183 FLATS

### SPECIFICATIONS

|                             |              |
|-----------------------------|--------------|
| Length Overall              | 18'4"        |
| Beam                        | 8'0"         |
| Draft                       |              |
| Engine Up                   | 9"           |
| Engine Down                 | 29"          |
| Fuel Capacity               | 45 Gal.      |
| Weight (hull only)          | 1170 Lbs.    |
| Weight (for trailer sizing) | 2200 Lbs.    |
| Cockpit Area                | 30 Sq. Ft.   |
| Bridge Clearance            |              |
| No Top                      | 2'6"         |
| Cockpit Depth               | 11"          |
| Fresh Water (Opt.)          | 2 1/2 Gal.   |
| Max HP O/B                  | 200 HP       |
| Hull Type                   | Modified Vee |
| O/B Transom Height          | 20"          |
| Fish Box                    | 148 Qts.     |
| Baitwell                    | 58 Qts.      |
| Casting Platform Storage    | 180 Qts.     |

### PERFORMANCE DATA

| ENGINE:<br>MODEL | SEC. TO<br>PLANE | FUEL<br>CAP. | SPEED<br>4000RPM | MPG<br>4000 RPM | RANGE<br>4000 RPM | W.O.T.<br>MPH |
|------------------|------------------|--------------|------------------|-----------------|-------------------|---------------|
| M 150 L          | 2.9              | 45 GAL.      | 36 MPH           | 2.8             | 115 MILES         | 44-46         |
| O 115 SLEU       | 3.5              | 45 GAL.      | 28 MPH           | 4.2             | 170 MILES         | 34-36         |
| O 150 GLEO       | 2.5              | 45 GAL.      | 35 MPH           | 3.3             | 135 MILES         | 44-46         |

ALL DATA IS SUBJECT TO CHANGE

### STANDARD EQUIPMENT

- Bilge Pump (1250 GPH) • Baitwell/Recirculating - Insulated (37 Gal.) • Baitwell and Livewell Lights • Catch & Release Well - Insulated • Cleats - Pop-Up 4 1/2" (3) • Cockpit Lights (2) • Control Panel with Resettable Breakers • Divinycell Foam Core Transom • Electric Fuel Gauge • Electric Horn • Flotation Foam • Fuel/Water Separator • Hatches with True Gutter System • Premium Gel Coat • Navigational Lights - Removable • NMMA Certified • Rod Racks (10") • Seat Cushions (3 Person) • Slip Resistant Deck, Cockpit and Gunnels • Stainless Steel (Marine Grade) 12 Volt Receptacle Plug • Stainless Steel (Marine Grade) Steering Wheel • Storage Bow and Stern (Dry/Insulated) • Storage for 2 Batteries • Warranty - Lifetime / 10 Years Transferable

### OPTIONAL EQUIPMENT

- Battery Charger 12/24 Volt • Battery Switch (Dual) • Cockpit Shower • Jackplate • Lift Kit • Poling Platform • Poling Platform Leaning Post • Pop-Up Pole Holders • Stereo AM/FM Cassette with 2 Speakers • Stereo AM/FM CD with 2 Speakers • Shrink Wrap • Steering - Hydraulic • Stereo with Speakers • Trim Tabs • Pre-wire for Trolling Motor • Steering - No Feedback • Dive Ladder (Armstrong) • Hull Color (Gel Coat) • Console Cover

### OPTION PACKAGES:

### ELECTRONICS PACKAGE

- Small Magnetic Compass • Depth Finder • VHF Radio

1997

# 200 SPORTSMAN

## SPECIFICATIONS

|                             |                     |
|-----------------------------|---------------------|
| Length Overall              | 20'2"               |
| Beam                        | 8'0"                |
| Draft                       |                     |
| Engine Up                   | 12"                 |
| Engine Down                 | 30"                 |
| Hull Type                   | Deep Vee            |
| Fuel Capacity               | 70 Gal.             |
| Weight (hull only)          | 2250 Lbs.           |
| Weight (for trailer sizing) | 3500 Lbs.           |
| Cockpit Area                | 97 Sq. Ft.          |
| Cockpit Depth               | 22.5"               |
| Bridge Clearance            |                     |
| No Top                      | 5'10"               |
| With Tee Top                | 7'4"                |
| Max HP                      |                     |
| Outboard                    | 175 HP              |
| Max Persons/Weight Cap.     | 7 Persons/1000 lbs. |
| Baitwell Capacity           | 74 Qts.             |
| Fish Box Capacity           | 142 Qts.            |
| O/B Transom Height          | 25"                 |
| Console Storage             | 11 Cubic Ft.        |
| Baitwell                    | 152 Qts.            |
| Fish Box                    | 74 Qts.             |

## PERFORMANCE DATA

ENGINE: SEC. TO FUEL SPEED MPG RANGE W.O.T.  
 MODEL PLANE CAP. 4000 RPM 4000 RPM 4000 RPM MPH

| ENGINE MODEL | SEC. TO PLANE | FUEL CAP. | SPEED 4000 RPM | MPG 4000 RPM | RANGE 4000 RPM | W.O.T. MPH |
|--------------|---------------|-----------|----------------|--------------|----------------|------------|
| F120 EXLPT   | 5.0           | 70 GAL.   | 26 MPH         | 3.9          | 246 MILES      | 32-34      |
| O150 ELEO    | 2.5           | 70 GAL.   | 29.9 MPH       |              | 137 MILES      | 42         |
| M 150 XL     | 4.1           | 70 GAL.   | 30 MPH         | 3.4          | 153 MILES      | 41-43      |
| O 150 EXEU   | 2.5           | 70 GAL.   | 29 MPH         | 3.4          | 137 MILES      | 38-40      |

ALL DATA IS SUBJECT TO CHANGE

# 200 SPORTSMAN

## STANDARD EQUIPMENT

Anchor and Rope Locker Storage • Battery Tray • Bilge Pump (1250 GPH) and Automatic Float Switch • Casting Deck Fish/Storage Box Insulated • Center Console with Storage • Cleats 8" (3) • Control-Binnacle • Dash Panel with Resettable Breakers • Divinycell Foam Core Transom • Drink Holders • Electronics Area • Flotation Foam (Closed Cell) • F.I.S.T. Stringer System • Fuel/Water Separator • Full Instrumentation (Fuel, MPH, RPM, Temp., Trim, Volts) • Garboard Drain • Gunnel Trim-Rigid Vinyl • Hatches with True Gutter System • Horn-Electric • Premium Gel Coat • Navigational Lights • NMMA Certified • Non-Skid Deck • Plexiglass Windshield • Rod Racks (6 Rod Cap.) • Seats, Helm and Passenger • Seats - Aft Jump • Self Bailing Cockpit • Stainless Steel (Marine Grade) Deck Hardware Thru Bolted • Stainless Steel (Marine Grade) Steering Wheel • Stainless Steel (Marine Grade) Windshield Grab Rail • Steering, Rotary Helm • Striping, Green Color • Tackle Box, Built In • Terminal Bar, Helm and Transom • Warranty Lifetime/10 Years Transferable

## OPTIONAL EQUIPMENT

Battery Switch for Dual Batteries • Lift Kit • Steering - No Feed Back Cable • Stereo AM/FM Cassette with 2 Speakers • Shrink Wrap • Stereo AM/FM/CD with 2 Speakers • Top, Bimini • Top, Tee with Radio Box • Console Cover • Dive Ladder (Armstrong) • Spreader Lights for Tee Tops • Gunnel Mount Outriggers • Rod Holders, 2 Pair

## OPTION PACKAGES:

### SPORT CONVENIENCE PACKAGE

Bow Cushion • Cockpit Lights (1 Pair) • Drive Platform, Half with Ladder • 12 Volt Receptacle • Springline Cleats 8" (2)

### FISH PACKAGE

• Baitwell, Recirculating (No Wash Down) • Rod Holders (2 pair) • Cooler with Backrest

### ELECTRONICS PACKAGE

Compass • Depth Finder • VHF Radio w/Antenna

# 1997 202 SPORTSMAN

## SPECIFICATIONS

|                             |                     |
|-----------------------------|---------------------|
| Length Overall              | 20'2"               |
| Beam                        | 8'0"                |
| Draft                       |                     |
| Engine Up                   | 12"                 |
| Engine Down                 | 30"                 |
| Hull Type                   | Deep Vee            |
| Fuel Capacity               | 70 Gal.             |
| Weight (hull only)          | 2500 Lbs.           |
| Weight (for trailer sizing) | 3500 Lbs.           |
| Cockpit Area                | 29.25 Sq. Ft.       |
| Cockpit Depth               | 22.5"               |
| Bridge Clearance            |                     |
| No Top                      | 6'2"                |
| With Hard Top               | 7'6"                |
| Max HP                      |                     |
| Outboard                    | 175 HP              |
| Max Persons/Weight Cap.     | 7 Persons/1000 Lbs. |
| Baitwell Capacity           | 39 Qts.             |
| Fish Box Capacity           | 39 Qts.             |
| O/B Transom Height          | 25"                 |

## PERFORMANCE DATA

ENGINE: SEC. TO FUEL SPEED MPG RANGE W.O.T.  
 MODEL PLANE CAP. 4000 RPM 4000 RPM 4000 RPM MPH

| ENGINE:<br>MODEL | SEC. TO<br>PLANE | FUEL<br>CAP. | SPEED<br>3000 RPM | MPG<br>3000 RPM | RANGE<br>3000 RPM | W.O.T.<br>MPH |
|------------------|------------------|--------------|-------------------|-----------------|-------------------|---------------|
| F120 EXLPT       | 4.6              | 70 GALS.     | 23 MPH            | 3.2             | 202 MILES         | 29-31         |
| M 135            | 3.5              | 70 GALS.     | 28 MPH            | 2.8             | 177 MILES         | 39-41         |
| M 3.0 710        | 3.8              | 70 GALS.     | 19 MPH            | 4.0             | 247 MILES         | 34-36         |
| M 4.3 LX I/O     | 3.0              | 70 GALS.     | 23 MPH            | 4.5             | 289 MILES         | 41-43         |

ALL DATA IS SUBJECT TO CHANGE

# 202 SPORTSMAN

## STANDARD EQUIPMENT

Anchor and Rope Locker Storage • Battery Tray • Bilge Pump (1250 GPH) and Automatic Float Switch • Casting Deck Fish/Storage Box Insulated • Console Dual with Storage • Cleats 8" (3) • Control-Binnacle • Dash Panel with Resettable Breakers • Divinycell Foam Core Transom • Drink Holders • Electronics Area • Flotation Foam (Closed Cell) • F.I.S.T. Stringer System • Fuel/Water Separator • Full Instrumentation (Fuel, MPH, RPM, Temp., Trim, Volts) • Garboard Drain • Gunnel Trim-Rigid Vinyl • Hatches with True Gutter Systems • Horn-Electric • Premium Gel Coat • Navigational Lights • NMMA Certified • Non-Skid Deck • Plexiglass Windshield • Rod Racks (6 Rod Cap.) • Seat - Helm and Passenger • Seats - Aft Jump • Self Bailing Cockpit • Stainless Steel (Marine Grade) Deck Hardware Thru Bolted • Stainless Steel (Marine Grade) Steering Wheel • Steering, Rotary Helm • Striping, Green Color • Tackle Box, Built In • Terminal Bar, Helm and Transom • Warranty - Lifetime/10 Years Transferable

## OPTIONAL EQUIPMENT

Battery Switch for Dual Batteries • Lift Kit • Steering - No Feed Back Cable • Stereo AM/FM Cassette or CD with 2 Speakers • Shrink Wrap • Top, Bimini with Windscreen • Rod Holders, 2 pair • Dive Ladder (Armstrong) • Outriggers Gunnel Mount

## OPTION PACKAGES:

### SPORT CONVENIENCE PACKAGE

Bow Cushion • Cockpit Lights (1 Pair) • Dive Platform, Half with Ladder • 12 Volt Receptacle • Springline Cleats 8" (2)

### FISH PACKAGE

• Baitwell, Recirculating (No Wash Down) • Rod Holders (2 pair)

### ELECTRONICS PACKAGE

• Compass • VHF • Depth Finder

# 210 SPORTSMAN



## 210 SPORTSMAN

### SPECIFICATIONS

|                             |              |
|-----------------------------|--------------|
| Length Overall              | 20'6"        |
| Beam                        | 8'6"         |
| Draft (hull only)           |              |
| Engine Up                   | 14"          |
| Engine Down                 | 32"          |
| Hull Type                   | Deep Vee     |
| Fuel Capacity               | 95 Gal.      |
| Weight (hull only)          | 2800 Lbs.    |
| Weight (for trailer sizing) | 4000 Lbs.    |
| Cockpit Area                | 80 Sq. Ft.   |
| Cockpit Depth               | 28' 7"       |
| Max HP                      |              |
| Outboard                    | 225 HP       |
| Bridge Clearance            |              |
| No Top                      | 5'5"         |
| Hard Top                    | 7'8"         |
| O/B Transom Height          | 25"          |
| Freshwater Tank (Opt.)      | 15 Gal.      |
| Fish Box                    | 160 Qts.     |
| Baitwell                    | 45 Qts.      |
| Casting Deck Storage        | 58 Qts.      |
| Console Storage             | 22 Cubic Ft. |

### PERFORMANCE DATA

| ENGINE: | SEC. TO | FUEL | SPEED    | MPG      | RANGE    | W.O.T. |
|---------|---------|------|----------|----------|----------|--------|
| MODEL   | PLANE   | CAP. | 4000 RPM | 4000 RPM | 4000 RPM | MPH    |

|            |     |         |        |     |           |       |
|------------|-----|---------|--------|-----|-----------|-------|
| M 150 XL   | 3.9 | 95 GAL. | 26 MPH | 2.9 | 250 MILES | 36-38 |
| M 200 XL   | 3.5 | 95 GAL. | 34 MPH | 4.2 | 360 MILES | 44-46 |
| M 225 XL   | 3.9 | 95 GAL. | 37 MPH | 2.4 | 205 MILES | 48-50 |
| O 150 EXEO | 3.3 | 95 GAL. | 25 MPH | 3.2 | 275 MILES | 36-38 |

ALL DATA IS SUBJECT TO CHANGE

### STANDARD EQUIPMENT

- Accessory Bus Bar Under Dash • Automatic Float Switch Bilge Pump (1250 GPH) • Anchor Locker Storage • Battery Tray with Hold Down (Single) • Casting Deck Storage • Center Console with Storage • Cutting Board • Dash Panel • Divinycell Foam Core Transom • Drink Holders • Electric Fuel Gauge • Electric Horn • F.I.S.T. Stringer System • Flotation Foam (Closed Cell) • Fuel/Water Separator (engine pkg. only) • Garboard Drains • Hatches with True Gutter System • Illuminated Switch Panel with Resettable Breakers • Insulated Aft Baitwell/Livewell • Insulated Fish Box (2) • Premium Gel Coat • Mechanical Rotary Helm Steering Navigation Lights • Molded In Console Seat • NMMA Certified • Plexiglass Windshield • Remote Oil Deck Fill (Engine Package Only) • Rigid Vinyl Gunnel Trim Marine Grade Insert • Rod Racks • Stainless Steel (Marine Grade) Cleats (8") • Stainless Steel (Marine Grade) Deck Hardware Thru Bolted • Stainless Steel (Marine Grade) Full Bow Rails • Stainless Steel (Marine Grade) Steering Wheel • Stainless Steel (Marine Grade) Windshield Grab Rail • Striping Package (Green, Blue, Red, Gray) • Tackle Box - Built-In • Twin Pedestal Seats • Warranty - Lifetime / 10 Years Transferable

### OPTIONAL EQUIPMENT (Bracket, Single +2)

- Battery Switch - Dual w/Trays • Bimini Top • Cockpit Shower • Console Cover • Leaning Post (2700 Style) • Lift Kit • Lights - Remote Control Spot • Lights - Spreader (Requires Tee Top) • Outriggers - Gunnel Mount or Top Gun T-Top • Seat Cushions (Transom Step) • Seat - Rear Bench - Removable (Full Transom Only) • Mounted • Stereo AM/FM/Cassette with 2 Speakers • Stereo AM/FM/CD with 2 Speakers • Shrink Wrap • Steering - Hydraulic • Storm Hood • Top-Tee with Radio Box • Trim Tabs • Dive Ladder (Armstrong) • Steering - Feed Back Cable • Rod Holders - 2 pair

### OPTION PACKAGES:

#### CONVENIENCE PACKAGE

- Bow Cushion • Cockpit Bolster Cushions • 12 Volt Receptacle • Spring Line Cleats • 1 Pair Cockpit Lights • 1/2 Dive Platform with Ladder

#### FISH PACKAGE

- Baitwell - Recirculating Pump • Raw Washdown System Aft • Rod Holders (2 Pair)

#### ELECTRONICS PACKAGE

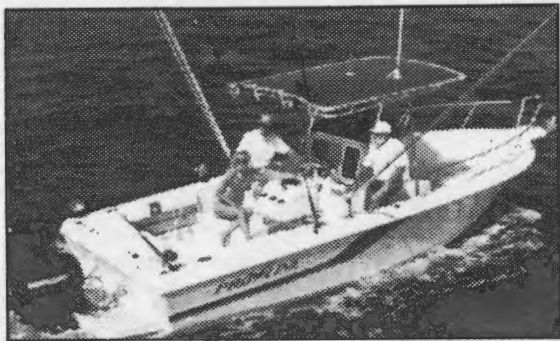
- Compass • VHF Radio with Antenna

#### DELUXE CONVENIENCE PACKAGE

(Requires +2 Bracket)

- Full Dive Platform with Full Transom • Bow Cushion • Cockpit Bolster Cushions • 12 Volt Receptacles • Springline Cleats • 1 Pair Cockpit Lights





## 240 SPORTSMAN

### SPECIFICATIONS

|                             |            |
|-----------------------------|------------|
| Length Overall              | 25'5"      |
| Beam                        | 8'6"       |
| Draft (hull only)           |            |
| Engine Up                   | 14"        |
| Engine Down                 | 29"        |
| Hull Type                   | Deep Vee   |
| Fuel Capacity O/B           | 144 Gal.   |
| Weight (hull only)          | 3600 Lbs.  |
| Weight (for trailer sizing) | 5700 Lbs.  |
| Cockpit Area                | 94 Sq. Ft. |
| Cockpit Depth               | 29 1/4"    |
| Max HP O/B                  | 300 HP     |
| Fresh Water                 | 15 Gal.    |
| Bridge Clearance            |            |
| No Top                      | 6'9" (est) |
| Tee Top                     | 8'1" (est) |
| Fish Box                    | 160 Qts.   |
| Baitwell                    | 65 Qts.    |
| Total Floor Storage         | 102 Qts.   |
| Console Cooler              | 65 Qts.    |

### PERFORMANCE DATA

| ENGINE:      | SEC. TO | FUEL      | SPEED    | MPG      | RANGE     | W.O.T. |
|--------------|---------|-----------|----------|----------|-----------|--------|
| MODEL        | PLANE   | CAP.      | 4000 RPM | 4000 RPM | 4000 RPM  | MPH    |
| M 200 XL     | 4.4     | 144 GALS. | 30 MPH   | 2.6      | 335 MILES | 37-39  |
| M 225 XL     | 4.5     | 144 GALS. | 34 MPH   | 2.0      | 260 MILES | 45-47  |
| M 225 EFI    | 4.8     | 144 GALS. | 32 MPH   | 2.1      | 272 MILES | 43-45  |
| M T-150 XL   | 2.8     | 144 GALS. | 36 MPH   | 2.4      | 310 MILES | 48-52  |
| O 200 TEXO   | 3.8     | 144 GALS. | 28 MPH   | 3.0      | 390 MILES | 39-41  |
| M 250 XL GFI | 4.5     | 144 GALS. | 32 MPH   | 2.2      | 278 MILES | 44-46  |

ALL DATA IS SUBJECT TO CHANGE

## 240 SPORTSMAN

### STANDARD EQUIPMENT

- Accessory Bus Bar Under Dash • Automatic Float Switch Bilge Pump (1250 GPH) • Anchor Rope Locker Storage • Battery Tray with Hold Down • Bow Pulpit Anchor Roller • Bracket (Single +2) • Casting Deck Storage • Coolers/Storage Boxes (Insulated) • F.I.S.T. Stringer System • Sport Console with Enclosed Head, Porta-Pottie • Cutting Board • Dash Panel • Divinycell Foam Core Transom • Drink Holders • Electric Fuel Gauge • Electric Horn • Fuel/Water Separator (Engine Pkg. Only) • Garboard Drains • Hatches w/True Gutter System • Hydraulic Steering • Illuminated Instrument Panel w/Resettable Breakers • Insulated Fish Box • Leaning Post • Premium Gel Coat • Navigation Lights • NMMA Certified • Plexiglass Windshield • Remote Oil Deck Fill (Engine Pkg. Only) • Rigid Vinyl • Gunnel Trim (Marine Grade) Stainless Steel Insert • Rod Racks • Stainless Steel (Marine Grade) Bow Rails • Stainless Steel (Marine Grade) Steering Wheel • Stainless Steel (Marine Grade) Windshield Grab Rail • Striping Package (Green, Blue, Gray, Red) • Tackle Box - Built-In • Transom Door • Transom Bait Station with 20 Gal. Livewell • Transom Sink with Faucet - 25 Qts. • Warranty - Lifetime / 10 Years Transferable

### OPTIONAL EQUIPMENT

- Graphics Paint (Ribbon Stripe or Custom) • Dive Ladder (Armstrong) • Hull Color - Gel Coat (Green, Black, Yellow) • Battery Switch - Dual with Trays • Console Cover • Dockside Discharge for Portable Head • Leaning Post - Backrest • Leaning Post - Deluxe (3400 Style) • Lift Kit • Lights - Remote Control Spot (Requires Tee Top) • Lights - Spreader (Requires Tee Top) • Outriggers - Gunnel Mount or Top Gun Tee Top Mounted • Scuba Racks for Leaning Post • Shower (Cockpit or Head) • Stereo AM/FM Cassette with 2 Speakers • Stereo AM/FM/CD with 2 Speakers • Rod Holders (2 Pair) • Seat - Rear Bench Removable • Shrink Wrap • Storm Hood • Top - Tee with Radio Box • Tee Top Enclosure Package • Trim Tabs • Windlass with Bow Protector • Head - Electric Mincerator, Holding Tank and Pump Out • Top Bimini

### OPTION PACKAGES:

#### SPORT CONVENIENCE PACKAGE

- Bow Cushions • Cockpit Bolster Cushions • Cockpit Lights (1 Pair) • Dive Platform - Half with Ladder • Springline Cleats • 12 Volt Receptacle

#### DELUXE SPORT PACKAGE

- Bow Cushions • Cockpit Boltser Cushions • 12 Volt Receptacle • Springline Cleats • Full Dive Platform - with Ladder

#### ELECTRONICS PACKAGE

- Compass - Magnetic • Depth Finder • VHF Radio

# 2700 SPORTSMAN



## 2700 SPORTSMAN

### SPECIFICATIONS

|                             |             |
|-----------------------------|-------------|
| Length Overall              | 27'6"       |
| Beam                        | 9'10"       |
| Draft (hull only)           |             |
| Engine Up                   | 20"         |
| Engine Down                 | 32"         |
| Hull Type                   | Deep Vee    |
| Fuel Capacity O/B           | 200 Gal.    |
| Weight (hull only)          | 4750 Lbs.   |
| Weight (for trailer sizing) | 7300 Lbs.   |
| Cockpit Area                | 115 Sq. Ft. |
| Cockpit Depth               | 30"         |
| Max HP O/B                  | 500 HP      |
| Fresh Water Capacity        | 15 Gal.     |
| Bridge Clearance            |             |
| No Top                      | 6'4" (est)  |
| Tee Top                     | 7'6" (est)  |
| Arch                        | 7'8" (est)  |
| Baitwell                    | 80 Qts.     |
| Fish Boxes (2)              | 228 Qts.    |
| Total Floor Storage         |             |
| Console Cooler              | 65 Qts.     |

### PERFORMANCE DATA

ENGINE: SEC. TO FUEL SPEED MPG RANGE W.O.T.  
MODEL PLANE CAP. 4000 RPM 4000 RPM 4000 RPM MPH

| MODEL        | SEC. TO PLANE | FUEL CAP. | SPEED 4000 RPM | MPG 4000 RPM | RANGE 4000 RPM | W.O.T. MPH |
|--------------|---------------|-----------|----------------|--------------|----------------|------------|
| M T-200 XL   | 4.5           | 200 GALS. | 37 MPH         | 1.7          | 305 MILES      | 47-49      |
| M T-225 XXL  | 3.3           | 200 GALS. | 38 MPH         | 2.0          | 360 MILES      | 47-49      |
| O T-200 TXEU | 3.3           | 200 GALS. | 35 MPH         | 2.3          | 415 MILES      | 44-46      |
| O T-225 TXEU | 4.0           | 200 GALS. | 39 MPH         | 2.2          | 395 MILES      | 47-49      |
| MT 200 XLEFI | 3.6           | 200 GALS. | 37MPH          | 1.6          | 288 MILES      | 52-54      |

ALL DATA IS SUBJECT TO CHANGE

### STANDARD EQUIPMENT

- Accessory Bus Bar Under Dash • Automatic Bilge Pump (1250 GPH) • Rope Locker Storage • Battery Tray with Battery Hold Down (2) • Bow Pulpit with Anchor Roller • Bracket (Dual) • Casting Deck Storage • Coolers/Storage Box (Insulated) • F.I.S.T. Stringer System • Cutting Boards (2) • Divinycell Foam Core Transom • Dive Platform Full with Ladder • Drink Holders • Electric Fuel Gauge • Electric Horn • Foam Flotation (Closed Cell) • Fresh Water System • Fuel/Water Separator (Engine Pkg. Only) • Garboard Drains • Hatches with True Gutter System • Head (Center Console) • Hydraulic Steering • Illuminated Instrument Panel with Resettable Breakers • Insulated Fish Box (3) • In-Head Storage • Leaning Post • Premium Gel Coat • Navigation Lights • NMMA Certified • Plexiglass Windshield • Remote Oil Deck Fill (Engine Pkg. Only) • Rigid Vinyl Gunnel Trim (Marine Grade) Stainless Steel Insert • Rod Racks • Striping Package (Green, Blue, Gray, Red) • Tackle Box - Built-In • Transom Door • Transom Bait Station with 20 Gal. Livewell - Recirculating Washdown System with Selector Panel, Knife & Pliers Holder • Warranty - Lifetime / 10 Years Transferable • Cockpit Shower

### OPTIONAL EQUIPMENT

- Dive Ladder (Armstrong) • Battery Switch - Dual with Trays • Bimini Top • Cleats - Spring Line • Console Cover • Head - Electric with Macerator, Pump Out, and 8.5 Gal. Holding Tank • Leaning Post - Backrest • Leaning Post - Deluxe (3400 Style) • Leaning Post with Scuba Rack • Lift Kit • Lights - Remote Control Spot (Requires Tee Top) • Lights - Spreader (Requires Tee-Top) • Outriggers - Gunnel Mount or Top Gun Tee-Top Mounted • Stereo AM/FM Cassette with 2 Speakers • Stereo AM/FM CD with 2 Speakers • Rod Holders - (2 Pair) • Seat - Rear Bench Removable • Shrink Wrap • Storm Hood • Top - Tee with Radio Box • Trim Tabs • Windlass • Tee Top Enclosure Package • Dockside Discharge for Porta-Pottie • Hull Color - Gel Coat • Graphics Paint (Ribbon Stripe or Custom)

### OPTION PACKAGES:

#### CONVENIENCE PACKAGE

- Bow Cushion • Cockpit Bolster Cushion • Cockpit Lights (1 Pair) • Spring Line Cleats • 12 Volt Receptacle

#### ELECTRONICS PACKAGE

- Compass - Magnetic • Depth Finder • VHF Radio

# 3400 BIMINI CUDDY



al q<sup>n</sup> **3400 BIMINI CUDDY**

## SPECIFICATIONS

|                             |             |
|-----------------------------|-------------|
| Length Overall              | 34'10"      |
| Beam                        | 9'2"        |
| Draft                       |             |
| Engine Up                   | 25"         |
| Engine Down                 | 33"         |
| Hull Type                   | Deep Vee    |
| Fuel Capacity               | 300 Gal.    |
| Weight (hull only)          | 7500 Lbs.   |
| Weight (for trailer sizing) | 11000 Lbs.  |
| Cockpit Area                | 112 Sq. Ft. |
| Cockpit Depth               | 27"         |
| Bridge Clearance            |             |
| No Top                      | 7'2"        |
| Tee Top                     | 7'10"       |
| Radar Arch                  | 7'10"       |
| Max HP O/B                  | 675 HP      |
| Max Persons/Weight Cap.     |             |
| Baitwell Cap.               | 154 Qts.    |
| Fish Box Cap. (2)           | 157 Qts.    |
| Fresh Water Capacity        | 30 Gals.    |
| Console Cooler              | 69 Qts.     |

DEAD RISE . 22°

## PERFORMANCE DATA

ENGINE: SEC. TO FUEL SPEED MPG RANGE W.O.T.  
MODEL PLANE CAP. 4000 RPM 4000 RPM 4000 RPM MPH

| ENGINE MODEL | SEC. TO PLANE | FUEL CAP. | SPEED 4000 RPM | MPG 4000 RPM | RANGE 4000 RPM | W.O.T. MPH |
|--------------|---------------|-----------|----------------|--------------|----------------|------------|
| M T-225      | 5.3           | 300 GALS. | 32.2 MPH       | 1.1          | 309 MILES      | 47-49      |
| M T-250 EFI  | 4.1           | 300 GALS. | 35.1 MPH       | 1.2          | 318 MILES      | 50-52      |
| M TRIPLE 225 | 5.5           | 300 GALS. | 42 MPH         | 1.2          | 334 MILES      | 59-61      |

ALL DATA IS SUBJECT TO CHANGE

## STANDARD EQUIPMENT

- AC/DC with One Receptacle • Battery Switch - Duel with Battery Trays • 2 Bilge Pumps (1250 GPH Ea.) with Automatic Float Switches • Bow Pulpit with Anchor Roller and Windlass • Bracket/Dive Platform Integrated • Cabin Cushions • Cabin Filler Cushion • Cabin Hatches • Cabin Lights • Cabin Table and Pedestal • Cleats - 8" Pop-Up (4) Fore Deck & Amidships • Cleats - 10" Aft (2) Under Gunnel • Cockpit Lights • Cockpit Shower • Cockpit Bolster Cushions • Companionway Door - Sliding • Console Cooler (69 Qts.) • Compass • Console Drink Holders (2) • Controls • Cutting Board • Divinycell Foam Core Transom • Electric Fuel Gauge • Electronics Area • Foam Flotation (Closed Cell) • Fish Boxes Port & Starboard Insulated (157 Qts. Each) • F.I.S.T. Fiberglass Stringer Structural Technology • Fuel/Water Separators • Full Instrumentation (Fuel, MPH, RPM, Temp., Trim, Volts) • Garboard Drains • Gunnel Trim - Rigid Vinyl with Stainless Steel (Marine Grade) Insert • Hatches with True Gutter System • Head (Porta Pottie) Enclosed in Center Console with Fresh Water Shower/Sink • Horn Electric • Instrument Panel with Resettable Breakers • Ladder - Stainless Steel • Leaning Post with Rod Holders • Livewell (154 Qts.) with Recirculating Pump and Raw Water Washdown • Premium Gel Coat • Navigational Lights • NMMA Certified • Rod Holders (2 Pair) • Rod Racks Horizontal Cockpit (8 Rod Cap.) • Rope Locker Storage • Seat - Forward Console • Self Bailing Cockpit • Stainless Steel (Marine Grade) Deck Hardware • Stainless Steel (Marine Grade) Steering Wheel • Stainless Steel (Marine Grade) Bow Rail • Steering Hydraulic • Striping Package (Blue, Green, Gray, Red) • Tackle Box • Terminal Bar - Helm and Transom • Transom Door • Transom Sink with Fresh Water System • Trim Tabs • Windshield - Curved Front • Warranty - Lifetime / 10 Years Transferable • 12 Volt Receptacle

## OPTIONAL EQUIPMENT

- Arch Radar • Arch Enclosure with Top • Lights • Air Conditioning • Auto Bar • Console Cover • Generator • Graphics Package • Head - Dockside Discharge or Electric with Macerator Pump Out and Holding Tank • Hot Water Heater • Light - Remote Spot (Requires Top or Arch) • Lights - Docking • Outriggers - Gunnel Mount • Microwave • Seats, Rear Bench, Removable with Backrest • Stereo AM/FM Cassette with 4 Speakers • Stereo AM/FM CD with 4 Speakers • Shrink Wrap • Spreader Light (Requires Top or Arch) • Tee Top with Radio Box • Tee Top with Top Gun Outriggers • Tee Top Enclosure • Top - Bimini

## OPTION PACKAGES:

### ELECTRONICS PACKAGE

- Compass - Electric • Depth Finder • VHF Radio with Antenna

### WEEKENDER PACKAGE

- Battery Charger • Ice Maker

# 201 WALKAROUND

# 201 WALKAROUND

## SPECIFICATIONS

|                             |                     |
|-----------------------------|---------------------|
| Length Overall              | 20'2"               |
| Beam                        | 8'0"                |
| Draft                       |                     |
| Engine Up                   | 12"                 |
| Engine Down                 | 30"                 |
| Hull Type                   | Deep Vee            |
| Fuel Capacity               | 70 Gal.             |
| Weight (hull only)          | 2500 Lbs.           |
| Weight (for trailer sizing) | 3500 Lbs.           |
| Cockpit Area                | 29.25 Sq. Ft.       |
| Cockpit Depth               | 22.5"               |
| Bridge Clearance            |                     |
| No Top                      | 5'5"                |
| with Hard Top               | 7'6"                |
| Max HP                      |                     |
| Outboard                    | 175 HP              |
| Max Persons/Weight Cap.     | 7 Persons/1000 lbs. |
| Baitwell Capacity           | 109 Qts.            |
| Fish Box Capacity           | 109 Qts.            |
| O/B Transom Height          | 25"                 |
| Cabin Head Room             | 53"                 |

## STANDARD EQUIPMENT

- Anchor and Rope Locker Storage • Battery Tray • Automatic Bilge Pump with float Switch (1250) • Casting Deck Fish/Storage Box Insulated • Center Console with Storage • Cleats - 8" (3) • Control - Binnacle • Dash Panel with Resettable Breakers • Divinycell Foam Core Transom • Drink Holders • Electronics Area • Foam Flotation (Closed Cell) • F.I.S.T. - Fiberglass Integrated Structural Technology • Fuel/Water Separator • Full Instrumentation (Fuel, MPH, RPM, Temp., Trim, Volts) • Garboard Drain • Gunnel Trim-Rigid Vinyl • Hatches with True Gutter System • Horn - Electric • Premium Gel Coat • Navigation Lights • NMMA Certified • Non-Skid Deck • Plexiglass Windshield • Rod Racks (6 Rod Cap.) • Seats - Helm and Passenger • Seats - Aft Jump • Self Bailing Cockpit • Stainless Steel (Marine Grade) Thru Bolted Hardware • Stainless Steel (Marine Grade) Steering Wheel • Steering, Rotary Helm • Striping, Green Color • Tackle Storage - Built-In • Terminal Bar, Helm and Transom • Warranty - Lifetime / 10 Years Transferable

## OPTIONAL EQUIPMENT

- Battery Switch for Dual Batteries • Curtain Package - with Bimini or Hard Top • Dive Ladder, Armstrong • Lift Kit • Steering Hydraulic • Stereo AM/FM Cassette or CD with 2 speakers • Shrink Wrap • Top, Bimini • Hard Top with Radio Box • Steering - No Feed Back Cable

## OPTION PACKAGES:

### CONVENIENCE PACKAGE

- Bow Cushions • Cockpit Lights (1 Pair) • Dive Platform - Half with Ladder • Spring Line Cleats 8" (2) • 12 Volt Receptacle • Porta Pottie with Forward Filler Cushion

### FISH PACKAGE

- Baitwell - Recirculating (No Wash Down) • Rod Holders (2 Pair)

### ELECTRONICS PACKAGE

- Compass • Depth Finder • VHF Radio

## PERFORMANCE DATA

| ENGINE:<br>MODEL | SEC. TO<br>PLANE | FUEL<br>CAP. | SPEED<br>4000 RPM | MPG<br>4000 RPM | RANGE<br>4000 RPM | W.O.T.<br>MPH |
|------------------|------------------|--------------|-------------------|-----------------|-------------------|---------------|
| F 120 EXPT       | 5.2              | 70 GALS.     | 25 MPH            | 3.4             | 215 MILES         | 31-33         |
| M 115 ELPTO      | 6.7              | 70 GALS.     | 22 MPH            | 2.9             | 185 MILES         | 29-31         |
| M 135 XL         | 5.0              | 70 GALS.     | 29 MPH            | 3.2             | 200 MILES         | 37-39         |
| M 150 XL         | 4.1              | 70 GALS.     | 29 MPH            | 3.4             | 200 MILES         | 38-40         |
| M 175            | 3                | 70 GALS.     | 31 MPH            | 3.5             | 220 MILES         | 47            |
| O 115 TLXO       | 5.1              | 70 GALS.     | 22 MPH            | 3.0             | 190 MILES         | 29-32         |
| O 130 TLXO       | 3.4              | 70 GALS.     | 24 MPH            | 2.9             | 185 MILES         | 33-35         |
| O 150 ELXO       | 2.9              | 70 GALS.     | 29 MPH            | 2.9             | 185 MILES         | 37-39         |
| ENGINE:<br>MODEL | SEC. TO<br>PLANE | FUEL<br>CAP. | SPEED<br>4000 RPM | MPG<br>4000 RPM | RANGE<br>4000 RPM | W.O.T.<br>MPH |
| M 3.0 I/O        | 3.8              | 70 GALS.     | 26.7 MPH          | 3.9             | 247 MILES         | 36            |
| M 4.3 LX I/O     | 3.3              | 70 GALS.     | 24 MPH            | 4.6             | 289 MILES         | 44            |

ALL DATA IS SUBJECT TO CHANGE

# 211 WALKAROUND



## 211 WALKAROUND

### SPECIFICATIONS

|                             |            |
|-----------------------------|------------|
| Length Overall              | 20'11"     |
| Beam                        | 8'6"       |
| Draft (hull only)           |            |
| Engine Up                   | 14"        |
| Engine Down                 | 32"        |
| Fuel Capacity               |            |
| O/B                         | 95 Gal.    |
| I/O                         | 95 Gal.    |
| Weight (hull only)          | 3500 Lbs.  |
| Weight (for trailer sizing) | 5000 Lbs.  |
| Cockpit Area                | 46 Sq. Ft. |
| Cockpit Depth               | 28.7"      |
| Max HP                      |            |
| O/B                         | 225 HP     |
| I/O                         | 210 HP     |
| Fresh Water (Opt.)          | 7 Gal.     |
| Bridge Clearance            |            |
| No Top                      | 6'         |
| Hard Top                    | 8'         |
| Sleeping Cap.               | 2 Person   |
| Cabin Head Room             | 57"        |
| O/B Transom Height          | 25"        |
| Hull Type                   | Deep Vee   |
| Baitwell                    | 43 Qts.    |
| Fish Box                    | 45 Qts.    |

### PERFORMANCE DATA

| ENGINE:      | SEC. TO | FUEL     | SPEED    | MPG      | RANGE     | W.O.T. |
|--------------|---------|----------|----------|----------|-----------|--------|
| MODEL        | PLANE   | CAP.     | 4000 RPM | 4000 RPM | 4000 RPM  | MPH    |
| M 150 XL     | 4.2     | 95 GALS. | 28 MPH   | 3.0      | 260 MILES | 37-39  |
| M 225 XL     | 3.6     | 95 GALS. | 34 MPH   | 2.5      | 215 MILES | 46-48  |
| O 150 EXEO   | 4.3     | 95 GALS. | 29 MPH   | 2.9      | 250 MILES | 34-36  |
| O 200 TXEO   | 5.5     | 95 GALS. | 30 MPH   | 2.3      | 200 MILES | 42-44  |
| O 225 TXEO   | 3.7     | 95 GALS. | 27 MPH   | 2.7      | 230 MILES | 40-42  |
| ENGINE:      | SEC. TO | FUEL     | SPEED    | MPG      | RANGE     | W.O.T. |
| MODEL        | PLANE   | CAP.     | 3000 RPM | 3000 RPM | 3000 RPM  | MPH    |
| M 4.3 LX A-1 | 6.5     | 95 GALS. | 22 MPH   | 3.4      | 290 MILES | 36-38  |
| M 5.7 L B-1  | 5.9     | 95 GALS. | 28 MPH   | 3.6      | 310 MILES | 41-43  |
| V 4.3 GS DP  | 4.7     | 95 GALS. | 20 MPH   | 3.1      | 265 MILES | 38-40  |

ALL DATA IS SUBJECT TO CHANGE

### STANDARD EQUIPMENT

- Accessory Bus Bar Under Dash • Anchor Locker Storage • Automatic Bilge Pump with Float Switch (1250 GPH) • Battery Tray with Hold Down (Single) • Cabin Accent Pillows (3) • Cabin Cushions & Bolsters • Cabin Door • Cabin Hatch • Cabin Lights • Cabin V-Berth Carpeted Storage • Cabin Opening Porthole Windows & Screens with Curtains • Cockpit Storage Shelves • Cutting Board • Divinycell Foam Core Transom • Drink Holders • Electric Fuel Gauge • Electric Horn • F.I.S.T. Stringer System • Forward Cabin Shelves with Mirrored Doors • Fuel/Water Separator (Engine Pkg. Only) • Garboard Drain • Hawse Pipe for Anchor Line • Hatches with True Gutter System • Illuminated Instrument Panel with Resettable Breakers • Insulated Fiberglass Fish Storage Box (Dual Mid-Cockpit) • Premium Gel Coat • Mechanical Rotary Helm Steering • Navigation Lights • NMMA Certified • Racks Recessed Rod • Remote Oil Deck Fills ( On Board Engine Pkg. as Required) • Rigid Vinyl Gunnel Trim with Stainless Steel (Marine Grade) Insert • Single Insulated Aft Baitwell • Stainless Steel (Marine Grade) Thru Bolted Hardware • Stainless Steel (Marine Grade) Full Bow Rail • Stainless Steel (Marine Grade) Steering Wheel • Striping Package (Green, Blue, Gray, Red) • Tackle Box - Built-In • Tempered Glass Windshield • Twin Pedestal Seats with Armrest • Warranty - Lifetime / 10 Years Transferable

### OPTIONAL EQUIPMENT

- Battery Switch with Dual Trays • Bimini Top • Bracket - Plus 2 • Cockpit Shower • Curtain Package - Soft Top/Hard Top • Cushions Filler • Cushions - Transom Seat • Flo-Scan (Single) • Hard Top with Radio Box & Rocket Launchers • Hydraulic Steering • Ladder - Dive, Armstrong • Lift Kit • Lights - Remote Control Spot (Requires Hard Top) • Lights-Spreader (Requires Hard Top) • Outriggers - Gunnel Mount • Dockside Discharge for Portable Head • Stereo AM/FM Cassette with 4 Speakers • Stereo AM/FM/CD with 4 Speakers • Rod Holders (2 Pair) • Seat - Rear Bench Removable (Full Transom Only) • Shrink Wrap • Trim Tabs • Wiper - Port (In addition to Walk Convenience Package) • Steering (No Feed Back Cable)

### OPTION PACKAGES:

#### CONVENIENCE PACKAGE

- Cockpit Bolster Cushions • Windshield Wiper • Portable Head • Cockpit Lights (1 Pair) • Dive Platform - Half • Spring Line Cleats • 12 Volt Receptacle • Cabin Table with Pedestal and Forward Filler Cushion

#### DELUXE CONVENIENCE PACKAGE

(I/O or Full Transom Only)

- Cockpit Bolster Cushions • Cockpit Lights (1 Pair) • Full Dive Platform • Portable Head • Spring Line Cleats • Windshield Wiper • 12 Volt Receptacle • Cabin Table with Pedestal and Forward Filler Cushion

#### FISH PACKAGE

- Baitwell - Recirculating/Washdown System Aft • Rod Holders (2 Pair)

#### ELECTRONICS PACKAGE

- Magnetic Compass • Depth Finder • VHF Radio w/Antenna

#### SEAT PACKAGE (I/O ONLY)

- Seat Cushions • Fish Box • Jump Seats • Motor Box Cushion



## 220 CUDDY/FISH

### SPECIFICATIONS

|                             |            |
|-----------------------------|------------|
| Length Overall              | 22'7"      |
| Beam                        | 8'6"       |
| Draft (hull only)           |            |
| Engine Up                   | 15"        |
| Engine Down                 | 33"        |
| Hull Type                   | Deep Vee   |
| Fuel Capacity               |            |
| O/B                         | 70 Gal.    |
| I/O                         | 70 Gal.    |
| Weight (hull only)          | 3250 Lbs.  |
| Weight (for trailer sizing) | 5000 Lbs.  |
| Cockpit Area                | 58 Sq. Ft. |
| Cockpit Depth               | 27"        |
| Max HP                      |            |
| O/B                         | 225 HP     |
| I/O                         | 265 HP     |
| Fresh Water Capacity (std)  | 7 Gal.     |
| Sleeping Cap.               | 2 Person   |
| Bridge Clearance            |            |
| No Top                      | 5'7"       |
| Cabin Head Room             | 54"        |
| Fish Box                    | 87 Qts.    |
| Baitwell                    | 50 Qts.    |
| Freshwater                  | 7 Gals.    |

### PERFORMANCE DATA

| ENGINE:     | SEC. TO | FUEL     | SPEED    | MPG      | RANGE     | W.O.T. |
|-------------|---------|----------|----------|----------|-----------|--------|
| MODEL       | PLANE   | CAP.     | 4000 RPM | 4000 RPM | 4000 RPM  | MPH    |
| M 5.7 LA-1  | 4.3     | 70 GALS. | 29 MPH   | 3.4      | 215 MILES | 40-42  |
| V 5.0 FI DP | 4.9     | 70 GALS. | 26 MPH   | 3.4      | 215 MILES | 40-42  |
| V 5.7 GI DP | 4.2     | 70 GALS. | 24 MPH   | 3.2      | 200 MILES | 38-40  |
| M 225 XL    | 4.0     | 70 GALS. | 31 MPH   | 2.3      | 144 MILES | 46-48  |

ALL DATA IS SUBJECT TO CHANGE

## 220 CUDDY/FISH

### STANDARD EQUIPMENT

- Accessory Bus Bar Under Dash • Rope Locker Storage Compartment • Automatic Float Switch Bilge Pump (1250 GPH) • Battery Tray with Hold Down (Single) • Bow Pulpit with Full Bow Rail & Anchor Roller • Bracket - Single +2 (O/B) • Cabin Accent Pillows (3) • Cabin Cushions & Bolster • Cabin Hatch • Cabin V-Carpeted Storage • Cabin Companionway Sliding Door with Lock • Cabin Porthole Windows (2) • Clear Curve Tempered Glass Windshield • Cleat - 8" • Cockpit Recessed Rod Racks • Cutting Board • Illuminated Instrument Panel with Resettable Breakers • Divinycell Foam Core Transom • Drink Holders • Dual Insulated Aft Baitwell • Electric Fuel Gauge • Electric Horn • F.I.S.T. Stringer System • Foam Flotation (Closed Cell) • Forward Cabin Shelves with Mirrored Doors • Fresh Water Sink with Ice Bin • Fuel/Water Separator (Engine Pkg. Only) • Garboard Drain • Garment Locker • Hawse Pipe • Hatches with True Gutter System • Insulated Fiberglass Fish Storage Box (Dual Mid-Cockpit) • Premium Gel Coat • Mechanical Rotary Helm Steering • Navigation Lights • NMMA Certified • Remote Oil Deck Fill (Engine Package as Required) • Rigid Vinyl Gunnel Trim with Stainless Steel (Marine Grade) Insert • Stainless Steel (Marine Grade) Thru Bolted Hardware • Stainless Steel (Marine Grade) Full Bow Rail • Stainless Steel (Marine Grade) Steering Wheel • Striping Package (Green, Blue, Red, Grey) • Tackle Storage - Built-In • Transom - Full • Twin Pedestal Seats with Armrest • Warranty - Lifetime / 10 Years Transferable

### OPTIONAL EQUIPMENT

- Battery Switch for Dual Batteries with Trays • Cushions - Fish Box • Cockpit Shower • Cuddy or Bimini Top • Curtain Package - Soft Top • Rod Holders (2 Pair) • Ladder-Dive, Armstrong • Seat - Rear Bench Removable (O/B Only) • Shrink Wrap • Trim Tabs • Washdown System - Recirculating • Wiper Port (In Addition to Convenience Pkg.) • Dockside Discard for Porta Pottie • Stereo AM/FM Cassette with 4 Speakers • Stereo AM/FM/CD with 4 Speakers

### OPTION PACKAGES:

#### CONVENIENCE PACKAGE

- Cockpit Bolster Cushions • Windshield Wiper • Portable Head • Cockpit Lights (1 Pair) • Dive Platform - Half with Ladder • Spring Line Cleats • 12 Volt Receptacle • Cabin Table with Redistal & Forward Filler Cushion

#### DELUXE CONVENIENCE PACKAGE

- Cockpit Bolster Cushions • Windshield Wiper • Portable Head • Cockpit Lights (1 Pair) • Dive Platform - Full with Ladder • Spring Line Cleats • 12 Volt Receptacle • Cabin Table with Redistal & Forward Filler Cushion

#### FISH PACKAGE

- Baitwell - Recirculating/Washdown System Aft • Rod Holders (2 Pair)

#### ELECTRONICS PACKAGE

- Compass • Depth Finder • VHF Radio with Antenna

#### SEAT PACKAGE

- Motor Box Cushion, Fish Box Cushions (I/O Only) Removable Jump Seats

1997



## 231 WALKAROUND

### SPECIFICATIONS

|                             |            |
|-----------------------------|------------|
| Length Overall              | 25'5"      |
| Beam                        | 8'6"       |
| Draft (hull only)           |            |
| Engine Up                   | 14"        |
| Engine Down                 | 32"        |
| Fuel Capacity               |            |
| O/B                         | 138 Gal.   |
| I/O                         | 138 Gal.   |
| Weight (hull only)          | 3740 Lbs.  |
| Weight (for trailer sizing) | 5500 Lbs.  |
| Cockpit Area                | 53 Sq. Ft. |
| Cockpit Depth               | 28 1/4"    |
| Max HP                      |            |
| O/B                         | 300 HP     |
| I/O                         | 250 HP     |
| Fresh Water Capacity        | 7 Gal.     |
| Sleeping Capacity           | 2 Persons  |
| Bridge Clearance            |            |
| No Top                      | 5'8"       |
| Hard Top                    | 8'4"       |
| Cabin Head Room             | 57"        |
| Hull Type                   | Deep Vee   |
| Fish Box                    | 120 Qts.   |
| Baitwell                    | 62 Qts.    |
| Fresh Water                 | 15 Gals.   |

### PERFORMANCE DATA

| ENGINE:<br>MODEL | SEC. TO<br>PLANE | FUEL<br>CAP. | SPEED<br>4000 RPM | MPG<br>4000 RPM | RANGE<br>4000 RPM | W.O.T.<br>MPH |
|------------------|------------------|--------------|-------------------|-----------------|-------------------|---------------|
| M 255 XL         | 5.1              |              | 32 MPH            | 1.7             | 210 MILES         | 42-44         |
| M 225 EFI        | 6.2              |              | 31 MPH            | 1.8             | 228 MILES         | 40-42         |
| O 200 TXEO       | 4.8              |              | 28 MPH            | 2.5             | 310 MILES         | 39-41         |
| O 225 TXEO       | 5.5              |              | 28 MPH            | 2.2             | 275 MILES         | 37-39         |
| ENGINE:<br>MODEL | SEC. TO<br>PLANE | FUEL<br>CAP. | SPEED<br>3000 RPM | MPG<br>3000 RPM | RANGE<br>3000 RPM | W.O.T.<br>MPH |
| M 5.7 L B-2      | 4.3              | 138 GALS.    | 27 MPH            | 3.0             | 375 MILES         | 38-40         |
| TM 150 EFI       | 3.0              | 138 GALS.    | 38.5 MPH          | 4.5             | 508 MILES         | 52-54         |
| TM 135 KL        | 3.7              | 138 GALS.    | 31 MPH            | 3.5             | 431 MILES         | 42-44         |

ALL DATA IS SUBJECT TO CHANGE

## 231 WALKAROUND

### STANDARD EQUIPMENT

- Accessory Bus Bar Under Dash • Alcohol Stove • Rope Locker Storage Compartment • Automatic Bilge Pump with Float Switch (1250 GPH) • Automatic Cabin Bilge Pump with Float Switch (500 GPH) • Battery Tray with Hold Down (Single) • Bow Pulpit with Full Bow Rail & Anchor Roller • Bracket - Single +2 (O/B) • Cabin Accent Pillows (3) • Cabin Cushions & Bolsters • Cabin Door • Cabin Hatch • Cabin Lights • Cabin V-Berth Carpeted Storage • Cabin Opening Porthole Windows & Screens • Cleat - 8" • Foam Flotation (Closed Cell) • Cockpit Recessed Rod Racks • Tempered Glass Windshield • Cutting Board • Divinycell Foam Core Transom • Drink Holders • Insulated Aft Baitwell • Electric Fuel Gauge • Electric Horn • F.I.S.T. Stringer System • Forward Cabin Shelves with Mirrored Doors • Fresh Water Cabin Sink • Fuel/Water Separator (Engine Pkg. Only) • Garboard Drain • Garment Locker • Hatches w/True Gutter System • Hydraulic Steering (O/B Only) • Illuminated Instrument Panel with Resettable Breakers • Insulated Fiberglass Fish Storage Box (Dual Mid-Cockpit) O/B Only • Dash Panel Access Door • Premium Gel Coat • Navigation Lights • NMMA Certified • Remote Oil Deck Fills (Engine Pkg as Required) • Rigid Vinyl Gunnel Trim with Stainless Steel Insert • Stainless Steel (Marine Grade) Thru Bolted Hardware • Stainless Steel (Marine Grade) Bow Rail • Stainless Steel (Marine Grade) Steering Wheel • Striping Package (Green, Blue, Red, Grey) • Tackle Storage - Built-In • Twin Pedestal Seats with Armrest • Warranty - Lifetime / 10 Years Transferable

### OPTIONAL EQUIPMENT

- Battery Switch-Dual with Trays • Bimini Top • Bracket - Twin + 2 • Cockpit Shower • Curtain Package (Soft Top, Hard Top) • Cushion - Filler • Dive Ladder, Armstrong • Hard Top with Radio Box & Rocket Launchers • Lift Kit • Lights - Cockpit • Lights - Remote Control Spot (Requires Hard Top) • Lights - Spreader (Requires Hard Top) • Outriggers - Gunnel Mount • Dockside Discharge for Portable Head • Stereo AM/FM Cassette with 4 Speakers • Stereo AM/FM CD with 4 Speakers • Rod Holders 2-Pair • Seat-Rear Bench Removable (Full Transom Only) • Shrink Wrap • Trim Tabs • Wiper - Port (In addition to Walk Convenience Package)

### OPTION PACKAGES:

#### CONVENIENCE PACKAGE

- Cockpit Bolster Cushions • Windshield Wiper • Portable Head • Cockpit Lights (1 Pair) • Dive Platform - Half • Spring Line Cleats • 12 Volt Receptacle • Cabin Table with Pedestal • Cabin Table with Pedestal & Forward Filler Cushion

#### DELUXE CONVENIENCE PACKAGE

- Cockpit Bolster Cushions • Windshield Wiper • Portable Head • Cockpit Lights (1 Pair) • Full Dive Platform with Ladder • Spring Line Cleats • 12 Volt Receptacle • Cabin Table with Pedestal & Forward Filler Cushion

#### FISH PACKAGE

- Baitwell - Recirculating/Washdown System Aft with Freshwater Sink Facet with 7 Gal. Transom Tank • Rod Holders (2 Pair)

#### ELECTRONICS PACKAGE

- Compass • Depth Finder • VHF Radio with Antenna

#### SEAT PACKAGE (I/O ONLY)

- Fishbox Cushions • Jump Seat • Motor Box Cushion

1  
9  
9  
7



## 251 WALKAROUND

### SPECIFICATIONS

|                             |                  |
|-----------------------------|------------------|
| Length Overall              | 27'4"            |
| Beam                        | 8'6"             |
| Draft (hull only)           |                  |
| Engine Up                   | 17"              |
| Engine Down                 | 35"              |
| Hull Type                   | Deep Vee         |
| Fuel Capacity               |                  |
| O/B                         | 170 Gal.         |
| I/O                         | 170 Gal.         |
| Weight (hull only)          | 4250 Lbs.        |
| Weight (for trailer sizing) |                  |
| Cockpit Area                | 62 Sq. Ft.       |
| Cockpit Depth               | 29"              |
| Max HP                      |                  |
| O/B                         | 300 HP           |
| I/O                         | 300 HP           |
| Fresh Water Cap.            | 21 Gal.          |
| Sleeping Cap.               | 2 Persons        |
| Bridge Clearance            |                  |
| No Top                      | 6'11"            |
| Hard Top                    | 8'8"             |
| Cabin Head Room             | 74"              |
| Fish Box (Floor)            | 2 @ 108 Qts. Ea. |
| Fish Box (Mid-Cockpit)      | 2 @ 65 Qts. Ea.  |
| Baitwell                    | 51 Qts.          |

### PERFORMANCE DATA

| ENGINE:      | SEC. TO | FUEL      | SPEED    | MPG      | RANGE     | W.O.T. |
|--------------|---------|-----------|----------|----------|-----------|--------|
| MODEL        | PLANE   | CAP.      | 4000 RPM | 4000 RPM | 4000 RPM  | MPH    |
| M 200 XL     | 4.3     | 170 GALS. | 29 MPH   | 1.5      | 235 MILES | 37-39  |
| M 225 XL     | 5.1     | 170 GALS. | 30 MPH   | 1.7      | 270 MILES | 40-42  |
| M 225 EFI    | 5.6     | 170 GALS. | 30 MPH   | 2.0      | 299 MILES | 40-42  |
| M T-150 XL   | 4.5     | 170 GALS. | 31 MPH   | 1.8      | 285 MILES | 42-45  |
| O 225 TXEO   | 6.2     | 170 GALS. | 24 MPH   | 1.9      | 300 MILES | 35-37  |
| O T-150 TXEO | 4.1     | 170 GALS. | 33 MPH   | 1.4      | 220 MILES | 40-42  |
| ENGINE:      | SEC. TO | FUEL      | SPEED    | MPG      | RANGE     | W.O.T. |
| MODEL        | PLANE   | CAP.      | 4000 RPM | 4000 RPM | 4000 RPM  | MPH    |
| M 5.7 L B-3  | 5.0     | 170 GALS. | 21 MPH   | 2.7      | 425 MILES | 38-40  |
| V 5.7 GI DP  | 6.2     | 170 GALS. | 25 MPH   | 3.0      | 475 MILES | 37-39  |
| V 7.4 GI     | 4.5     | 170 GALS. | 41.1 MPH | 1.9      | 293 MILES | 45-47  |

ALL DATA IS SUBJECT TO CHANGE

## 251 WALKAROUND

### STANDARD EQUIPMENT

- Accessory Bus Bar Under Dash • Rope Locker Storage Compartment • Automatic Bilge Pump with Float Switch (1250 GPH) Automatic Cabin Bilge Pump with Float Switch (500 GPH) • Battery Tray with Hold Down (Single) • Bow Pulpit with Full Bow Rail & Anchor Roller • Bracket - +2 (O/B) • Cabin Accent Pillows (3) • Cabin Cushions & Bolsters • Cabin Door • Cabin Hatch • Cabin Lights • Cabin Table with Single Pedestal Support • Cabin V-Berth Carpeted Storage • Cabin Opening Porthole Windows & Screens W/Curtains (4) • Cabin Window Curtains (Lg. Side Windows) • Cleats - 8" • Foam Flotation (Closed Cell) • Cockpit Bolster Cushions • Cutting Board • Dash Panel Access Door • Divinycell Foam Core Construction • Drink Holders • Electric Fuel Gauge • Electric Horn • Electronics Box with Lock (Dash) • Enclosed Head with Full Stand-up Shower • F.I.S.T. Stringer System • Forward Cabin Shelves with Mirrored Doors • Fuel/Water Separator (Engine Package Only) • Full Galley with Sink, Ice Box & Butane Stove • Garboard Drain • Hatches with True Gutter System • Hydraulic Steering (O/B Only) • Illuminated Instrument Panel with Resettable Breakers • Insulated Aft Baitwell • Insulated Fiberglass Fish Storage Box (with Macerator, 2 In Floor) • Premium Gel Coat • Navigation Lights • NMMA Certified • Portable Head • Remote Oil Deck Fills (Engine Pkg. as Required) • Rigid Vinyl Gunnel Trim with Stainless Steel (Marine Grade) Insert • Stainless Steel (Marine Grade) Thru Bolted Hardware • Stainless Steel (Marine Grade) Bow Rail • Stainless Steel (Marine Grade) Steering Wheel • Striping Package (Green, Blue, Red, Grey) • Tackle Storage - Built-In • Transom Door • Twin Pedestal Seats w/Armrest • Warranty - Lifetime / 10 Years Transferable

### OPTIONAL EQUIPMENT

- Battery Switch - Dual with Trays • Bimini Top • Bracket - Twin + 2 • Cockpit Shower • Curtain Package (Soft Top/Hard Top) • Cushions - Filler • Dive Ladder, Armstrong • Hard Top with Radio Box & Rocket Launchers • Head - Electric with Macerator, Holding Tank, Pump Out • Lift Kit • Lights - Remote Control Spot (with Hard Top Only) • Lights - Spreader (Requires Hard Top) • Outriggers - Gunnel Mount • Pump Out for Portable Head • Stereo AM/FM Cassette with 4 Speakers • Stereo AM/FM CD with 4 Speakers • Rod Holders - (2 Pair) • Seat - Rear Bench Removable (Full Transom Only) • Shrink Wrap • Trim Tabs • Wiper (Port) • Windlass with Bow Protector

### OPTION PACKAGES:

#### CONVENIENCE PACKAGE

- Windshield Wiper • Cockpit Lights (1 Pair) • 1/2 Dive Platform • Spring Line Cleats • 12 Volt Receptacle

#### DELUXE CONVENIENCE PACKAGE

- Windshield Wiper • Cockpit Lights (1 Pair) • Full Dive Platform with Ladder • Spring Line Cleats • 12 Volt Receptacle

#### FISH PACKAGE

- Baitwell - Recirculating/Washdown System Aft • Rod Holders (2 Pair) • Faucet for Transom Sink

#### ELECTRONICS PACKAGE

- Compass - Magnetic • Depth Finder • VHF Radio with Antenna

#### WEEKENDER PACKAGE

- AC/DC Refrigerator • AC/DC Panel • Battery Charger • AC Outlet in Cabin and Head

#### SEAT PACKAGE

- Fish Box Cushions • Motor Box Cushion



# 2810 CUDDY FISH

## SPECIFICATIONS

|                                |                           |
|--------------------------------|---------------------------|
| Length Overall                 | 29.6'                     |
| Beam                           | <del>28.0'</del><br>10'2" |
| Draft                          |                           |
| Engine Up                      | 25"                       |
| Engine Down                    | 33"                       |
| Fuel Capacity                  | 213 Gals.                 |
| Weight (hull only)             | 5500 Lbs.                 |
| Weight (for trailer sizing)    | 8,500 Lbs.                |
| Cockpit Area (total)           | 72 Sq. Ft.                |
| Bridge Clearance with Hard Top | 10'2"                     |
| Max HP                         | 500 HP                    |
| Cabin Headroom                 | 6'3"                      |
| Hull Type                      | Deep Vee                  |
| Baitwell                       | 42 Gal.                   |
| Fish Box                       | 2 @ 120 Qts. Ea.          |
| Storage Box Capacity           | 2 @ 150 Qts.              |
| Cooler Capacity                | 21 Gal.                   |
| Fresh Water                    | 21 Gal.                   |

# 2810 CUDDY FISH

## STANDARD EQUIPMENT

• AC/DC Panel with 2 Receptacles • Battery Trays • Battery Switch and Breaker Panel • Bilge Pumps with Float Switch • Bow Pulpit with Anchor Roller • Bracket/Dive Platform Integrated • Cushions - Bolsters and Filler • Cleats (5) • Cockpit Lights • Cockpit Bolsters • Cockpit Storage Boxes • Companionway Door - Sliding • Compass • Control - Binnacle Mount • Cockpit Seat with Cooler • Cutting Board at Transom • Drink Holders • Electric Fuel Gauge • Electronics Box with Lock • Illuminated Switch and Breaker Panel • Flotation Foam (Closed Cell) • Fish Boxes Port and Starboard - Insulated • F.I.S.T. Stringer System • Fuel/ Water Separators • Full Instrumentation • Galley with Sink, Ice Box and Alcohol Stove • Garboard Drain • Grab Rail - S/S (Not Available with Hard Top) • Gunnel Trim - Rigid Vinyl with Stainless Insert • Head - Enclosed Stand • Up Horn - Electric • Ladder - Concealed in Dive Platform • Livewell - 40 Gallons • Livewell Wash Down Selector Valve • Light - Engine Room • Lights - Navigational • NMMA Certified • 12 Volt Receptacle • Remote Oil and Deck Fills • Rod Racks - Horizontal Cockpit (6 Rod Capacity) • Rope Locker Storage • Self Bailing Cockpit • Stainless Steel (Marine Grade) Thru-Bolted Hardware • Stainless Steel (Marine Grade) Steering Wheel • Stainless Steel (Marine Grade) Bow Rail • Steering Hydraulic Helm • Striping Package (Green, Blue, Red, Grey) • Sundries Storage Compartment - Port and Starboard Wings • Tackle Box • Terminal Bar • Transom Door • Transom Livewell/Washdown System • Transom Sink with Faucet - Fresh Water • Transom Toot Bin • Transom Shower • Windshield - Cured Front with Side Vents • Warranty - Lifetime / 10 Years Transferable

## OPTIONAL EQUIPMENT

• Air Conditioning • Bimini Top • Curtain Package - Bimini Top • Generator • Head - Pump Out for Portable Head • Head - Electric with Macerator and Holding Tack with Pump Out • Hot Water Heater • Light - Remote Spot (Required Hard Top) • Microwave • Outriggers - Gunnel Mount • Rod Holders - 2 Pair • Seat - Rear Bench Removable • Shrink Wrap • Spreader Lights (Requires Hard Top) • Stereo AM/FM Cassette or CD with 4 Speakers • Top - Hard with Electronics Box and Rocket Launchers • Top Gun Outriggers • Windlass • Windshield Wipers • Trim Tabs

## OPTION PACKAGES:

### ELECTRONICS PACKAGE

• VHF Radio • Depth Finder • Electronics Compass

### WEEKENDER PACKAGE

• Battery Charger • AC/DC Refrigerator • Alcohol/Electric Stove



1997- **2950 MID CABIN**

**SPECIFICATIONS**

|                              |            |
|------------------------------|------------|
| Length Overall               | 30'0"      |
| Beam                         | 10'9"      |
| Draft (hull only)            |            |
| Engine Up                    | 22"        |
| Engine Down                  | 38"        |
| Hull Type                    | Deep Vee   |
| Fuel Capacity                |            |
| O/B (Saddle Tanks -2)        | 300 Gal.   |
| I/O (Dual Tanks)             | 200 Gal.   |
| Weight (hull only)           | 7500 Lbs.  |
| Weight (for trailer sizing)  | 10760 Lbs. |
| Cockpit Area                 | 80 Sq. Ft. |
| Cockpit Depth                | 30"        |
| Max HP                       |            |
| Outboard or Plus 2           | 500 HP     |
| I/O - Twin                   | 480 HP     |
| Fresh Water Capacity         | 42 Gal.    |
| Sleeping Capacity            | 4 Persons  |
| Holding Tank Capacity (Opt.) | 8.5 Gal.   |
| Bridge Clearance             |            |
| No Top                       | 7'1"       |
| Hard Top                     | 9'6"       |
| Cabin Head Room              | 6'6"       |
| Fish Box                     | 50 Gal.    |
| Baitwell                     | 100 Qts.   |
| Fresh Water                  | 42 Gal.    |

**PERFORMANCE DATA**

| ENGINE:<br>MODEL | SEC. TO<br>PLANE | FUEL<br>CAP. | SPEED<br>4000 RPM | MPG<br>4000 RPM | RANGE<br>4000 RPM | W.O.T<br>MPH |
|------------------|------------------|--------------|-------------------|-----------------|-------------------|--------------|
| M T-200 XL EFI   | 5.2              | 300 GAL.     | 28 MPH            | 1.2             | 323 MILES         | 44-46        |
| M T-225 XXL EFI  | 5.1              | 300 GAL.     | 34 MPH            | 1.3             | 350 MILES         | 45-47        |
| O T-200 TXEO     | 4.6              | 300 GAL.     | 29 MPH            | 1.7             | 460 MILES         | 41-43        |
| O T-225 TXEO     | 4.7              | 300 GAL.     | 30 MPH            | 2.2             | 595 MILES         | 40-42        |
| ENGINE:<br>MODEL | SEC. TO<br>PLANE | FUEL<br>CAP. | SPEED<br>3000 RPM | MPG<br>3000 RPM | RANGE<br>3000 RPM | W.O.T<br>MPH |
| M T-5.7 B-2      | 4.2              | 225 GAL.     | 27 MPH            | 2.1             | 415 MILES         | 38-40        |
| V T-5.7 GDP      | 5.1              | 225 GAL.     | 28 MPH            | 2.4             | 475 MILES         | 41-43        |

ALL DATA IS SUBJECT TO CHANGE

**2950 MID CABIN**

**STANDARD EQUIPMENT**

- Accessory Bus Bar Under Dash • AC/DC Panel with 2 Receptacles • Rope Locker Storage Compartment • Sundries Storage Compartment with Net • Sundries Storage Compartment with Door • Automatic Cabin Bilge Pump with Float Switch (500 GPH Cabin) • Automatic Bilge Pump with Float Switch (1250 GPH) • Battery Tray with Hold Down (Dual) • Battery Switch-Dual with Trays • Bait & Tackle Station with Aft Recirculating Bait/Livewell, Raw Water Washdown, Selector Panel (Baitwell - Washdown), Cleanup Sink • Bow Pulpit with Full Bow Rail & Anchor Roller • Bow Seat with Cushion • Cabin Accent Pillows (5) • Cabin Cushions & Bolsters • Cabin Door • Cabin Hatch • Cabin Lights • Cabin Rod Racks • Cabin Table with Single Pedestal Support • Cabin V-Berth Carpeted Storage • Cabin Opening Porthole Windows & Screens (4) • Cabin Window with Curtain • Clear Curved Tempered Glass Windshield • Cleats - 10" (5) • Foam Flotation (Closed Cell) • Cockpit Shower • Cockpit Bolster Cushion • Cockpit Recessed Rod Racks • Cockpit Seat with Cushion • Cockpit Lights • Cutting Boards • Illuminated Instrument Panel with Resettable Breakers • Divinycell Foam Core Transom • Dive Platform with Ladder • Drink Holders • Electric Fuel Gauge • Electronics Box with Lock (Dash) • Enclosed Head with Full Stand-up Shower • F.I.S.T. Stringer System • Forward Cabin Shelves with Mirrored Doors • Fuel/Water Separator (Engine Pkg. Only) • Full Galley with Sink, Ice Box & Alcohol Stove • Garboard Drain • Hatches with True Gutter System • Hawse Pipe • Head with Full Shower and Mirror • Helm Bench Seat (Command) • Horn (Electric) • Hydraulic Steering (O/B Only) • Illuminated Instrument Panel with Resettable Breakers • Insulated Fiberglass Fish Storage Box (Single Mid-Cockpit) • Knife & Pliers Drawer • Compass • Premium Gel Coat • Mid Cabin Berth with Covered Cushions • Mid Cabin Window & Screen • Navigation Light • NMMA Certified • Remote Oil Deck Fills (Engine Package as Required) • 12 Volt Receptacle • Rigid Vinyl Gunnel Trim with Stainless Steel (Marine Grade) Insert • Stainless Steel (Marine Grade) Thru Bolted Hardware • Stainless Steel (Marine Grade) Steering Wheel • Striping Package - (Green, Blue, Red, Grey) • Tackle Box - Built-In • Transom Door with Storage Compartment • Twin + 2 O/B Motor Bracket • Warranty - Lifetime / 10 Years Transferable • 12 Volt Receptacle

**OPTIONAL EQUIPMENT**

- Air Conditioning • Dive Ladder (Armstrong) • Bimini Top • Curtain Package (Soft Top/Hard Top) • Generator • Hard Top with Radio Box & Rocket Launchers • Head - Electric with Macerator, Holding Tanks, Pump Out • Hot Water Heater • Lights - Remote Control Spot (Requires Hard Top) • Lights - Spreader (Requires Hard Top or Arch) • Loran C with Antenna • Microwave • Outriggers - Gunnel or Top Gun • Dockside Discharge for Portable Head • Stereo AM/FM Cassette with 4 Speakers • Stereo AM/FM CD with 4 Speakers • Rod Holders (2 Pair) • Seat - Rear Bench Removable • Shrink Wrap • Stove • Trim Tabs • Wipers-Port • Windlass • Microwave • Custom Graphics

**OPTION PACKAGES:**

**ELECTRONICS PACKAGE**

- Depth Finder • VHF Radio with Antenna • Electric Compass

**WEEKENDER PACKAGE**

- Battery Charger • Alcohol/Electric Stove • AC/DC Refrigerator

JULY 1996

1520 S. Suncoast Boulevard  
Homosassa, FL 34448  
(904) 795-4111