

The background of the slide is a photograph of a long, straight asphalt road stretching into the distance. The road is flanked by dry, hilly desert terrain with sparse vegetation. In the far distance, a range of mountains is visible under a sky filled with large, white, fluffy clouds. The overall scene is bright and clear.

paviasystems

online training for the asphalt pavement industry

George White

www.paviasystems.com

Online Training for the Asphalt Pavement Industry



- The triple convergence
 - Education
 - Industry
 - Technology

Types of Education

- Formal
 - Subject matter expert driven
 - Prepared prior to delivery
 - Delivered in a variety of ways, including:
 - physical classroom
 - virtual online classroom
 - video conferencing
- Informal
 - Self learning
 - Peer-to-peer or on the job

Industry Snapshot

- Employs over 300,000 persons directly
- Supports over 600,000 people in related fields (equip. manufacturing, gov't agencies, etc)
- Growing demands for accountability
 - Design / Build
 - Design / Build / Maintain
 - Warranties
- New equipment, practices and procedures
- Seasonal personnel and operators

The Importance of Training

- Informed, skillful people are the cornerstone for successful business
 - Adapt to industry growth and change
 - Differentiate your company or agency
 - Solve problems effectively
 - Increase quality
 - Increase productivity



Paving in Ballard, circa 1900
from UW Libraries NW Collection

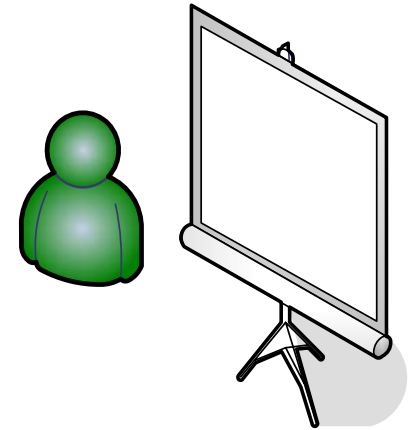
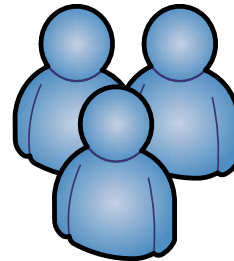
Productivity and Beer?

- Miller Brewing Company – Trenton, Ohio
- Implemented new training program for workers
- Now produces 50% more beer than any other facility



How We Typically Train

- Classroom Training
 - Short courses
 - Seminars
 - Conferences
- Limitations
 - Location requirement
 - Time requirement
 - Size constraint



How We Typically Train



The Challenge of Training

- Content Quality
- Delivery
- Cost
- Knowledge Retention
- Participant Accountability
- Measuring ROI



What is Online Training?

- A type of formal training
- Sometimes referred to as:
 - E-Learning
 - Online Learning
- Delivered via the Internet
- Only requires browser
- Available anytime, anywhere



Benefits of Online Training

- Typically requires 40 to 60% less time than similar content delivered in a classroom setting
- Equivalent effectiveness
- Readily and quickly distributed throughout a company or agency
- Consistent message
- Ease of updating
- Removes time and location requirement
- Reduces the overall cost of training

Methods of Online Training

- Self Directed Learning
- Guided Learning
- Blended Learning



Self Directed Learning

- Learn at your own pace
- Interactive multimedia experience
- Cross references and linking
- “Just-in-time” training
- Searchable reference
- Delivery through a web-based interface

Guided Learning

- Participant is led through material
- Typically audio or video to lead the participant
- Usually fixed time length
- Fixed navigation path

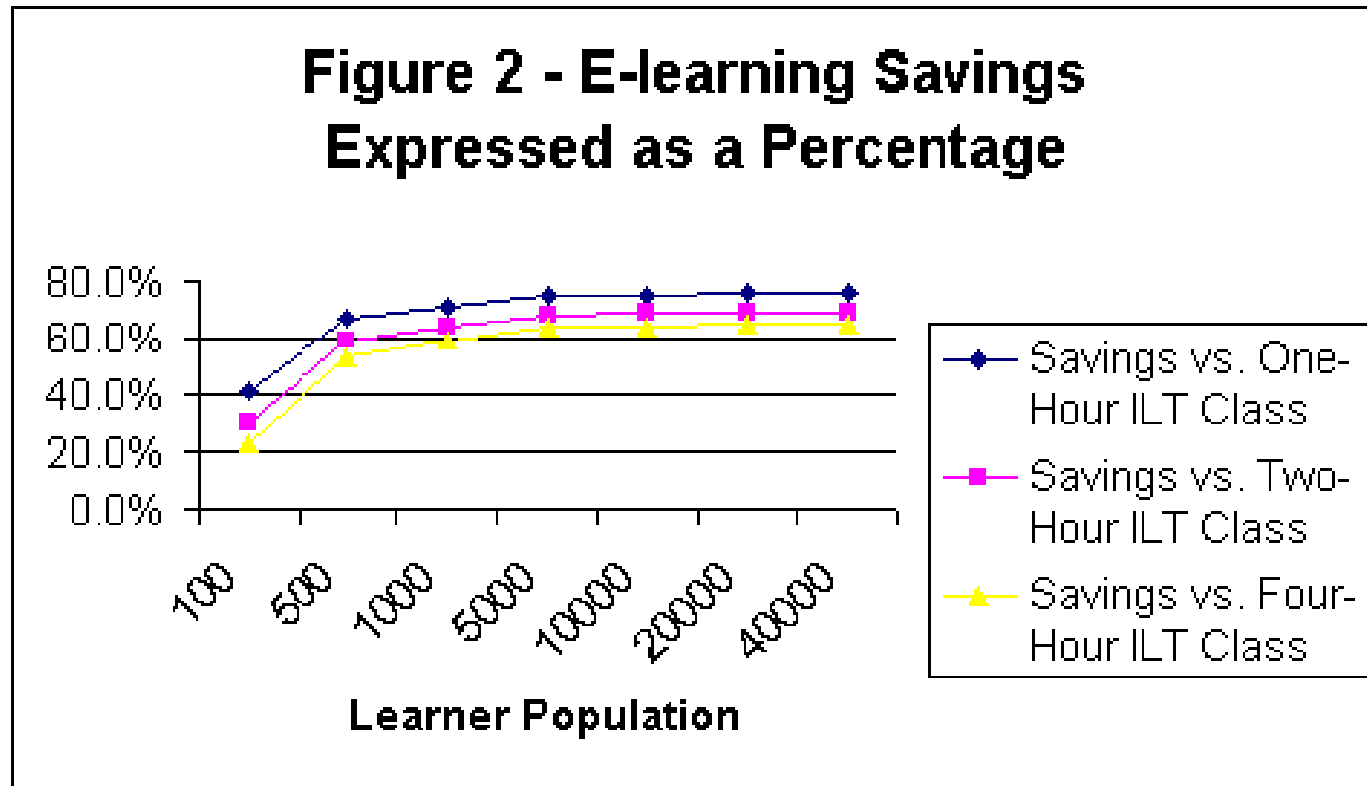
Blended Learning

- Combination of Online and Classroom
- Participants come to class with basic knowledge and can spend time solving problems
- More effective use of training instructors
- Classroom time is invaluable!



Case Study: Caterpillar

- Examined their internal cost to deliver traditional vs. online training



Online Training for the Asphalt Pavement Industry



- The triple convergence
 - Education
 - Industry
 - Technology

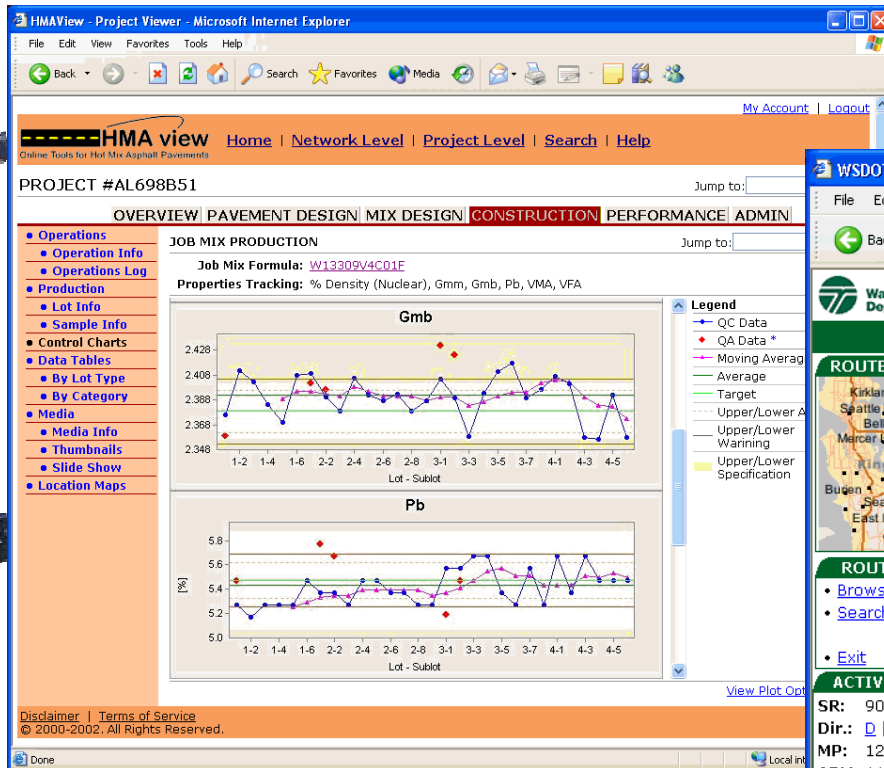
Who are we?



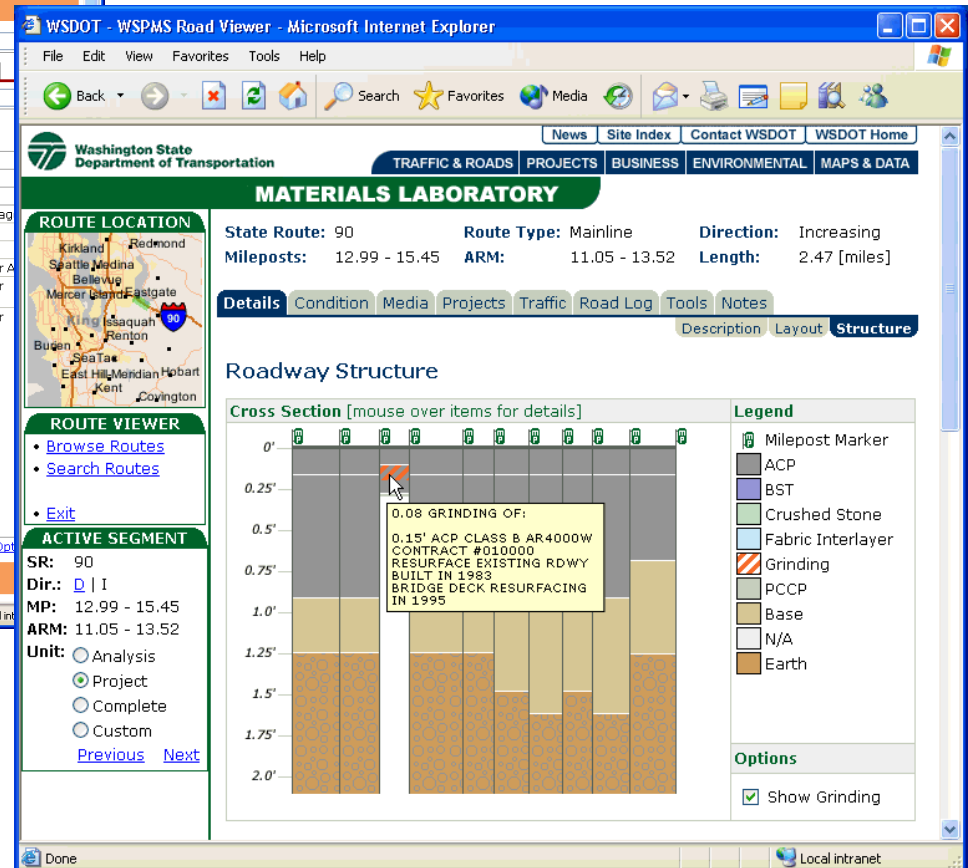
- Specializes in technology driven solutions for the paving community
- Launched from University of Washington
 - Over 35 years of experience in pavement industry
 - Strong collaboration with industry
 - Recognized in the pavements and learning communities

Data Management Solutions

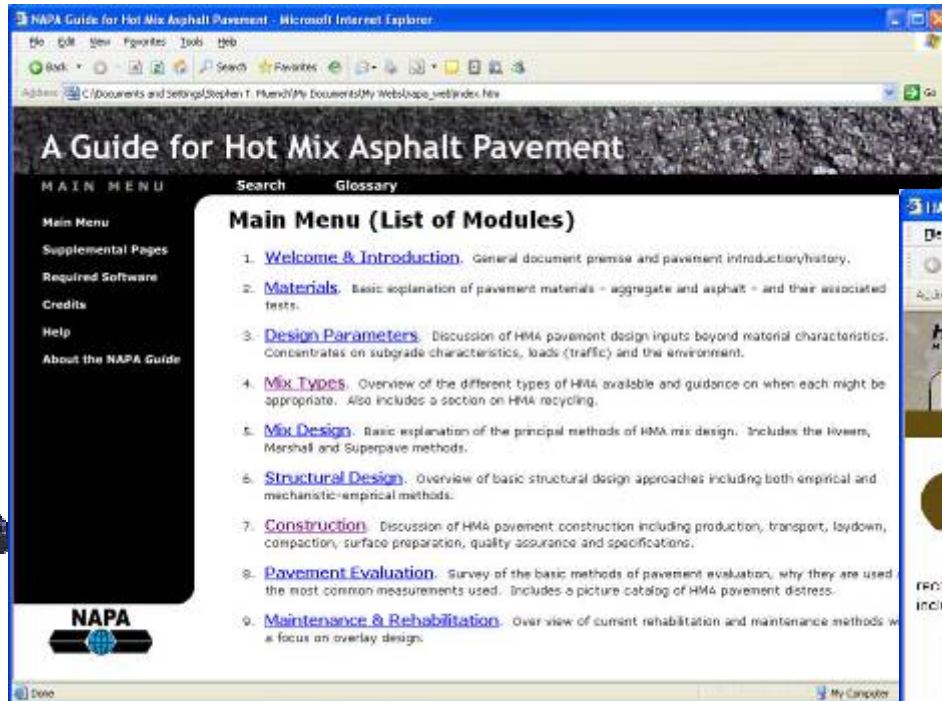
WSDOT Pavement Management System



HMAView (MDSHA)



Interactive Pavement Guides

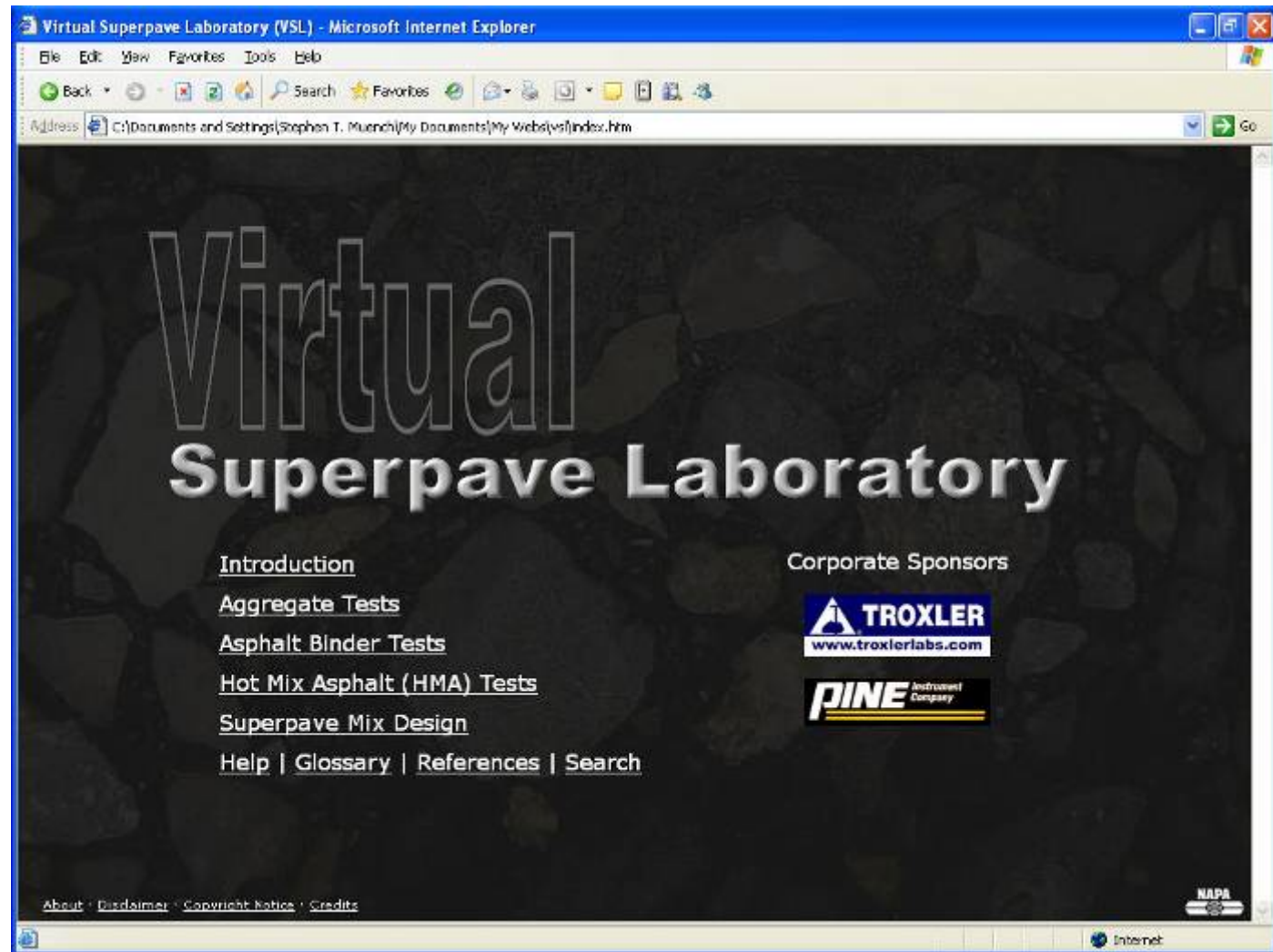


NAPA Guide for Hot Mix Asphalt Pavement

HAPI Asphalt Pavement Guide



Virtual Superpave Laboratory



Online Training Courses

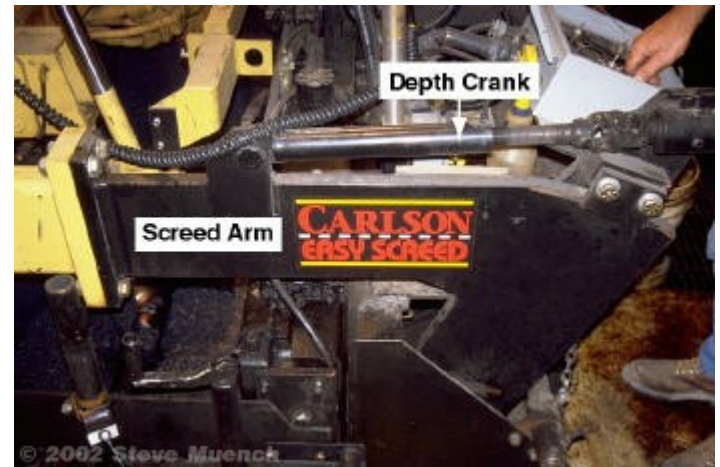
- Courses
 - One lesson
 - Multiple lessons
- Lessons
 - 30-60 minutes in length
 - May build on each other

What does a course look like?

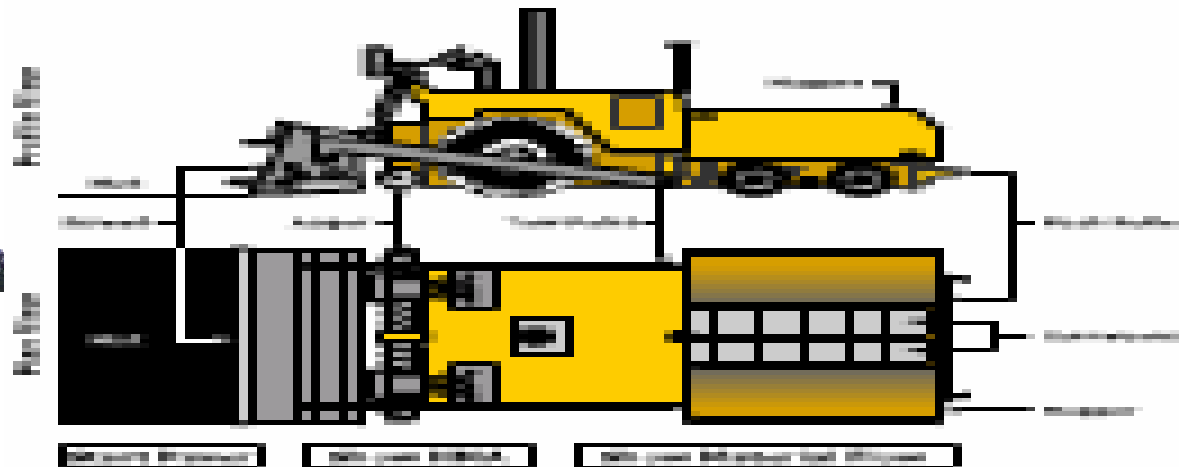
- Learning objectives
- Packaged in digest-able topic driven modules
- Two methods of delivery
 - Guided lesson
 - Self directed lesson
- Quiz feature
 - Measures trainee knowledge retention
- Progress tracking and feedback
- Supplemental resources

Course Content

- Digital Media
- Interactive Graphics
- Video
- Animations
- Narrations



Course Content Examples

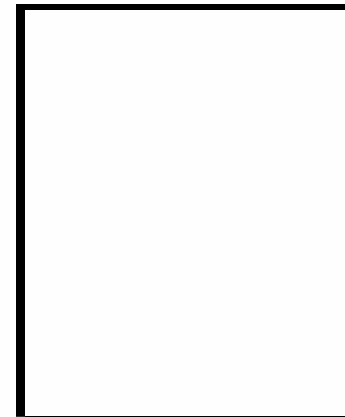


Course Content Examples

Student Performance Test Examples



Hand-drawn Oval



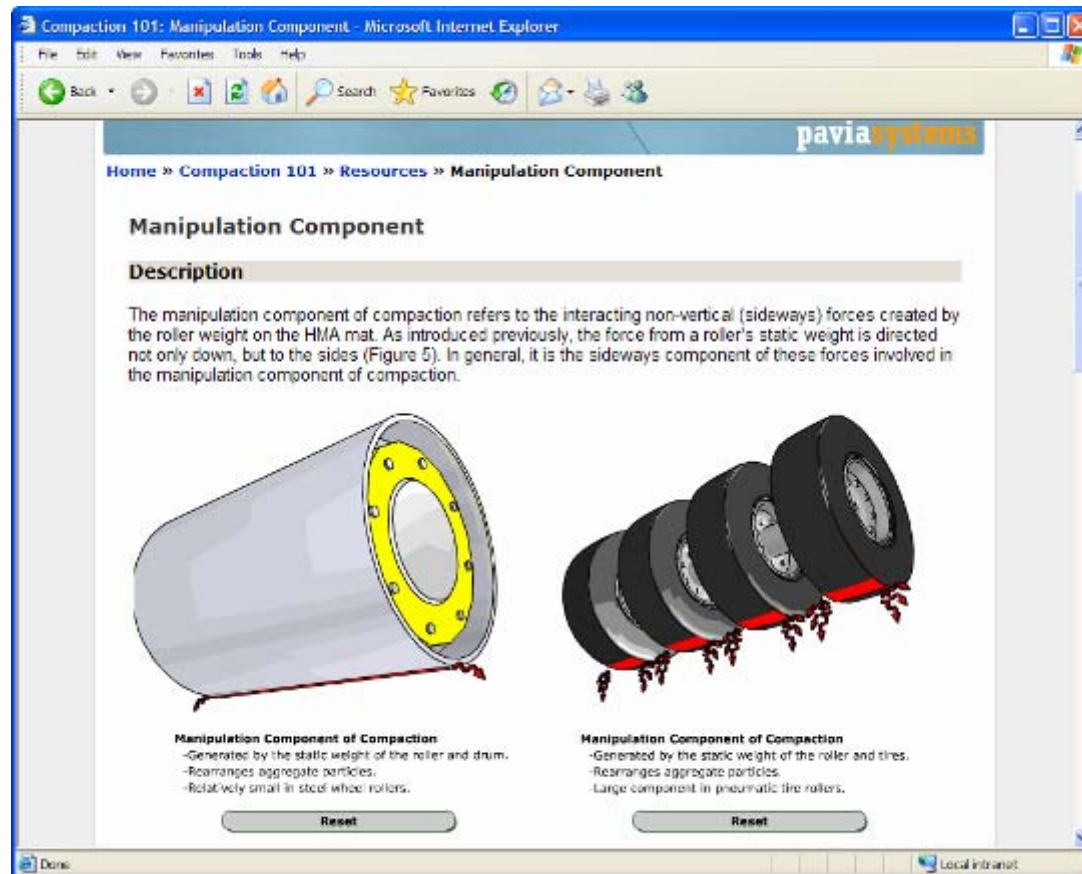
Hand-drawn Rectangle

Course Content Examples



Course Navigation

- Self directed, at your own pace



Course Navigation

- Guided, with narration and interactions

Components of Compaction - Microsoft Internet Explorer

File Edit View Favorites Tools Help

Back Forward Stop Home Search Favorites

Components of Compaction

NAPA

Outline Notes Search

Slide Title	Duration
Introduction	00:12
Learning Objectives	00:20
Lesson Outline	00:12
Static Component	00:22
• Static Pressure	00:26
Static Component	00:22

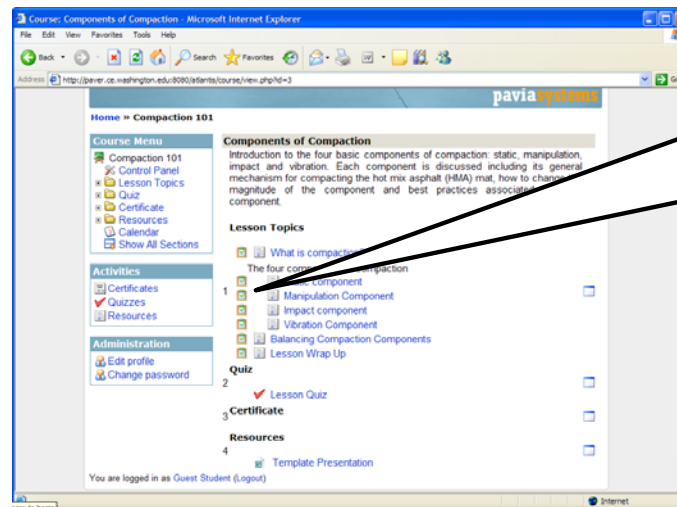
Static Pressure

- Force on the mat is expressed as pressure
- Depends on:
 - ☐ Roller weight
 - ☐ Contact area

The diagram illustrates the concept of static pressure by comparing two types of rollers on a NAPA mat. On the left, a 'Steel Drum' is shown with a red arrow indicating the 'Direction of Travel' to the left. The contact area with the mat is a narrow red line, labeled 'Contact Area (shown in red)'. On the right, a 'Pneumatic Tire' is shown with a red arrow indicating the 'Direction of Travel' to the left. The contact area with the mat is a larger red rectangle, also labeled 'Contact Area (shown in red)'. Both diagrams include a 'Reset' button below them. The interface also features a progress bar at the bottom showing '00:10 / 00:26' and a 'Done' button in the bottom left corner.

Progress Tracking

- Feedback for participant
- Enforce prerequisites
- Tracking ability for administrators



Topic #1



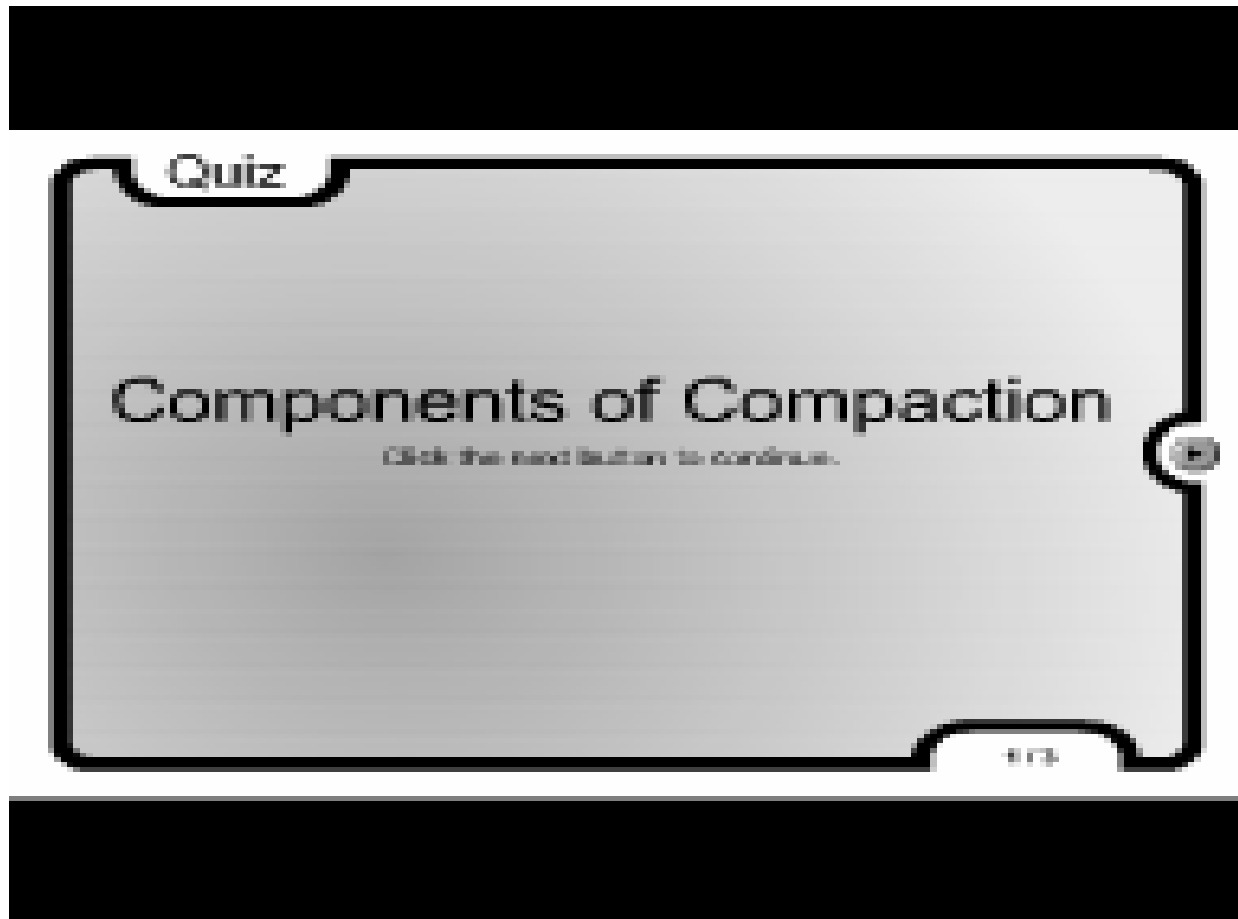
Topic #2



Topic #3

Evaluation Quizzes

- Many different question types



Certificates

- Indicate successful completion
- Verification of course compliance



Additional Resources

- VSL, Pavement Guides, etc.
- Data management links
- Company specific practices and techniques



Industry Partnership



- We've teamed up with NAPA to provide high quality content for the industry
- NAPA member benefits
 - Discounted course pricing
 - Quality review by NAPA
- Course development jointly managed

Availability

- Online training available in coming weeks
- Initial course offerings to include topics on:
 - The fundamentals of asphalt paving
 - Basic operations and procedures
 - Environmental
 - Safety
- VSL, Guide for Hot Mix Asphalt available now

Online Training Pricing

- Similar to traditional training model
- Per user per course
- Prices start at \$35
- Courses available for 12 months



Key factors to success

- Identify training needs
- Set training goals
- Provide incentives to reach those goals
- Focus on your core competencies
- Track your training performance over time
- Empower workers



paviasystems

online training for the asphalt pavement industry

contact me at:

george@paviasystems.com

www.paviasystems.com