

Out of the Woods

Worksheets for Key Stage 2



Out of the Woods

KS2 Worksheets

Introduction and Curriculum Links

1. Discover a tree
2. Who lives here?
3. Changing trees
4. Where am I?
5. Dead wood and food chains
6. Why are trees important



Out of the Woods

INTRO & LINKS

These teaching resources have been designed to enable schools to get the most out of using their local park as a teaching resource. They are curriculum-linked and support teaching children about the environment, and how important trees are. Teaching children about trees encourages scientific investigation, stimulates all the senses, encourages an investigation of the local area and supports subjects across the curriculum.

Please note the Council advice on Oak processionary moths (*Thaumetopoea processionea*) It is a pest that has established itself within the Borough over the last 11 years. It lives on oak trees and poses a risk to human and animal health.

See: http://www.richmond.gov.uk/home/services/parks_and_open_spaces/trees/tree_management_and_pruning/oak_processionary_moths.htm

There are other relevant resources and lesson plans that can be used to support the curriculum. A few of these have been listed below:

- Eden Project School lesson plans

<http://www.edenproject.com/learn/schools/lesson-plans/learning-with-leaves>
KS2 lesson plans for maths using leaves to measure and calculate

- Forestry Commission.

<http://www.forestry.gov.uk/forestry/infd-8skgzl>
An extensive collection of resources for schools and families.

- Opal explore Nature, Tree Health Survey

<http://www.opalexplornature.org/treesurvey>

This pack allows you to record your findings based on a detailed survey and report them to scientists. There are survey forms, teaching notes and support for teachers, id sheets and curriculum links freely available.

- The Woodland Trust Nature Detectives.

<http://www.woodlandtrust.org.uk/naturedetectives/>

This extensive collection of free resources for families and schools, aims to encourage access to woodlands and provides curriculum-linked resources support teaching children about woods and trees. The collection includes art and design activities.

- The Woodland Trust spotter sheets

<http://www.woodlandtrust.org.uk/mediafile/100671302/spotter-sheets.pdf?cb=ac8e114e-128b4a6395545074e7f8cf47>

Use this information to identify trees.

http://opalexplornature.org/sites/default/files/7/image/Tree%20Identification%20guide%20pp%20chart_0.pdf

Natural History Museum

<http://www.nhm.ac.uk/content/dam/nhmwww/take-part/identify-nature/tree-identification-key.pdf>

You can find a guide to animal tracks on the RSPB website

http://www.rspb.org.uk/Images/animaltracks_tcm9-133380.pdf

The Woodland Trust

<http://www.woodlandtrust.org.uk/mediafile/100815077/animal-track-hunt-sheet.pdf?cb=0ca-177c5a50641aa9634d6485b82200b>

Out of the Woods

Look for a tree to investigate. Can you name the different parts of the tree? Draw a line from the word to the part of the tree.

DISCOVER a TREE

**FRUITS/NUTS
/CONES**

BUDS

BARK

TRUNK

CROWN



BRANCHES

**LEAVES or
NEEDLES**

TWIGS

ROOTS

Out of the Woods

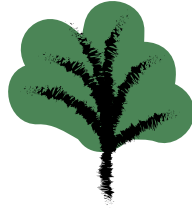
Look at your tree and answer the questions below. Tick the box or answer the questions.

DISCOVER a TREE

1. What shape is your tree?



Spreading



Fan



Cone



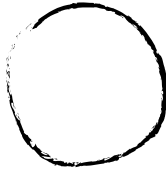
Column

Another Shape? _____

2. Can you see roots in the ground at the base of your tree?
How far do they reach?

Yes

Number of paces



No

3. Is the bark:

Smooth



Wrinkly



4. Does the bark look:

New

Old

5. Is there anything growing on it?

Yes

No

6. Are there buds on the branches?

Yes

No

Out of the Woods

DISCOVER a TREE

7. What do you think the circumference of your tree is?



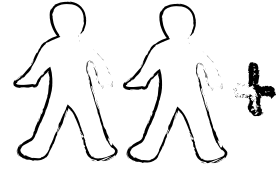
Hand span



Two hands



Two arms



Two people or more

8. Estimate how many branches there are.

5

10

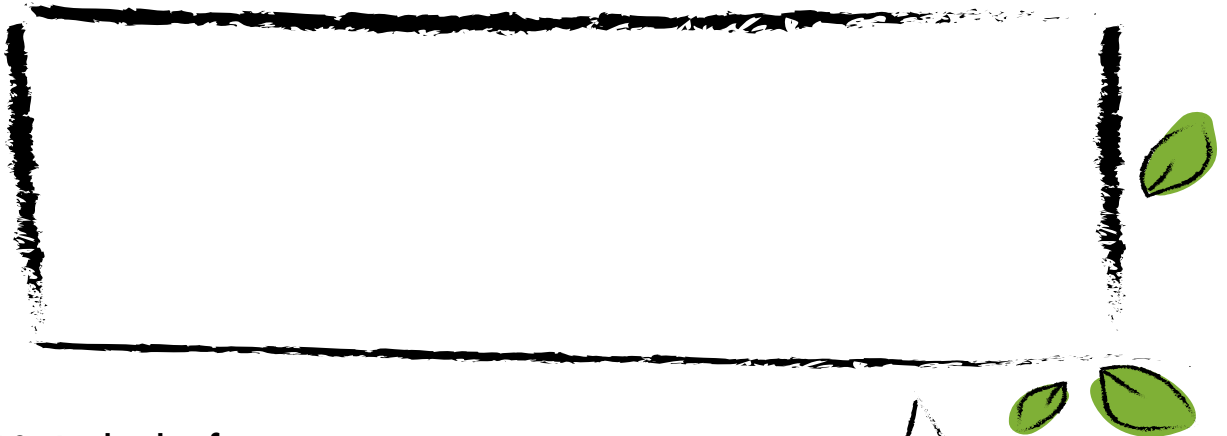
30

50

100

1000

9. Draw the shape of the leaves of your tree.



10. Is the leaf:



Single leaf

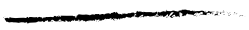


Needle



Compound

11. Is the leaf:



Smooth



Toothed

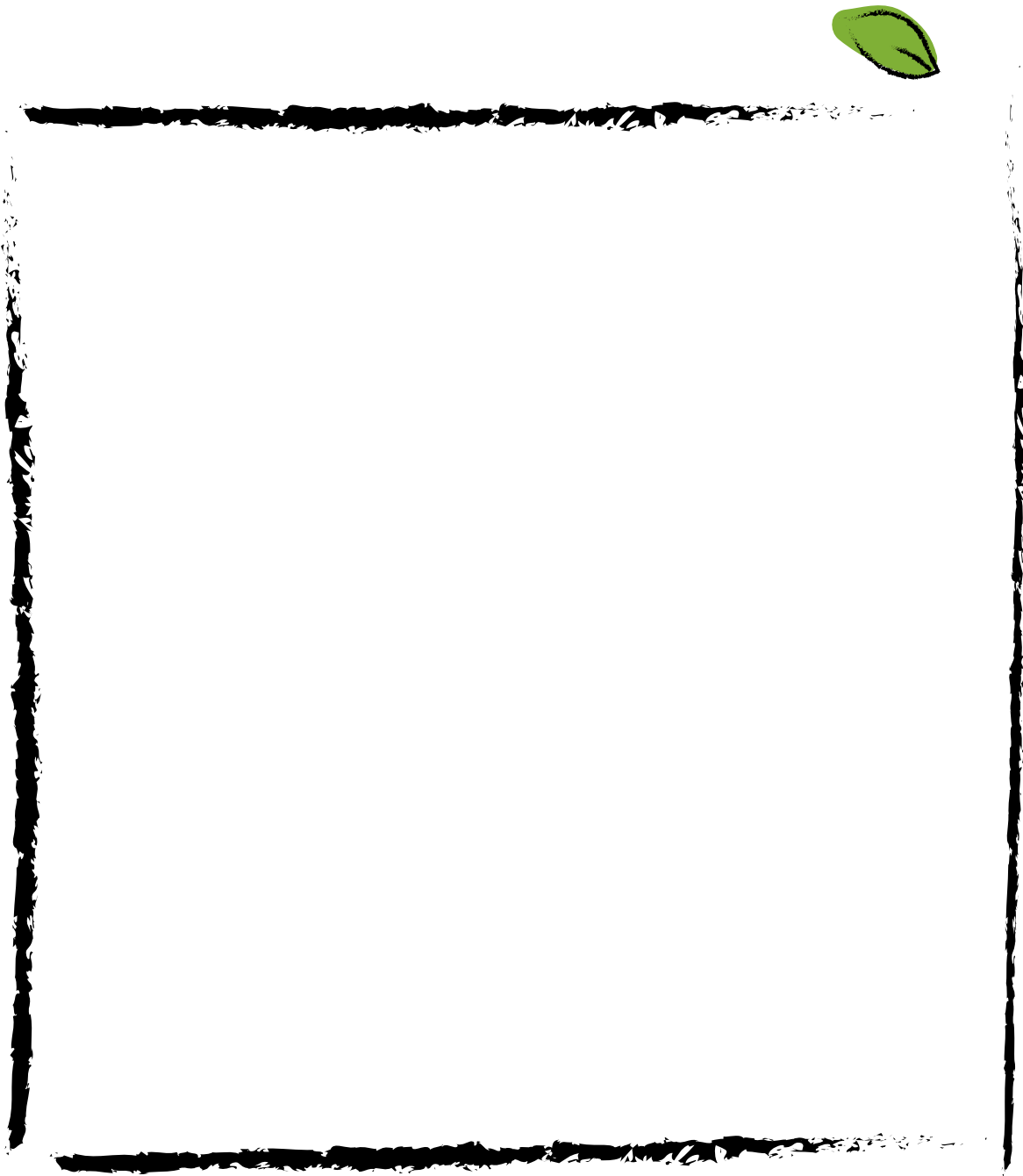


Wavy/Scalloped

Out of the Woods

Draw the tree that you have chosen. Can you identify it?

DISCOVER a TREE

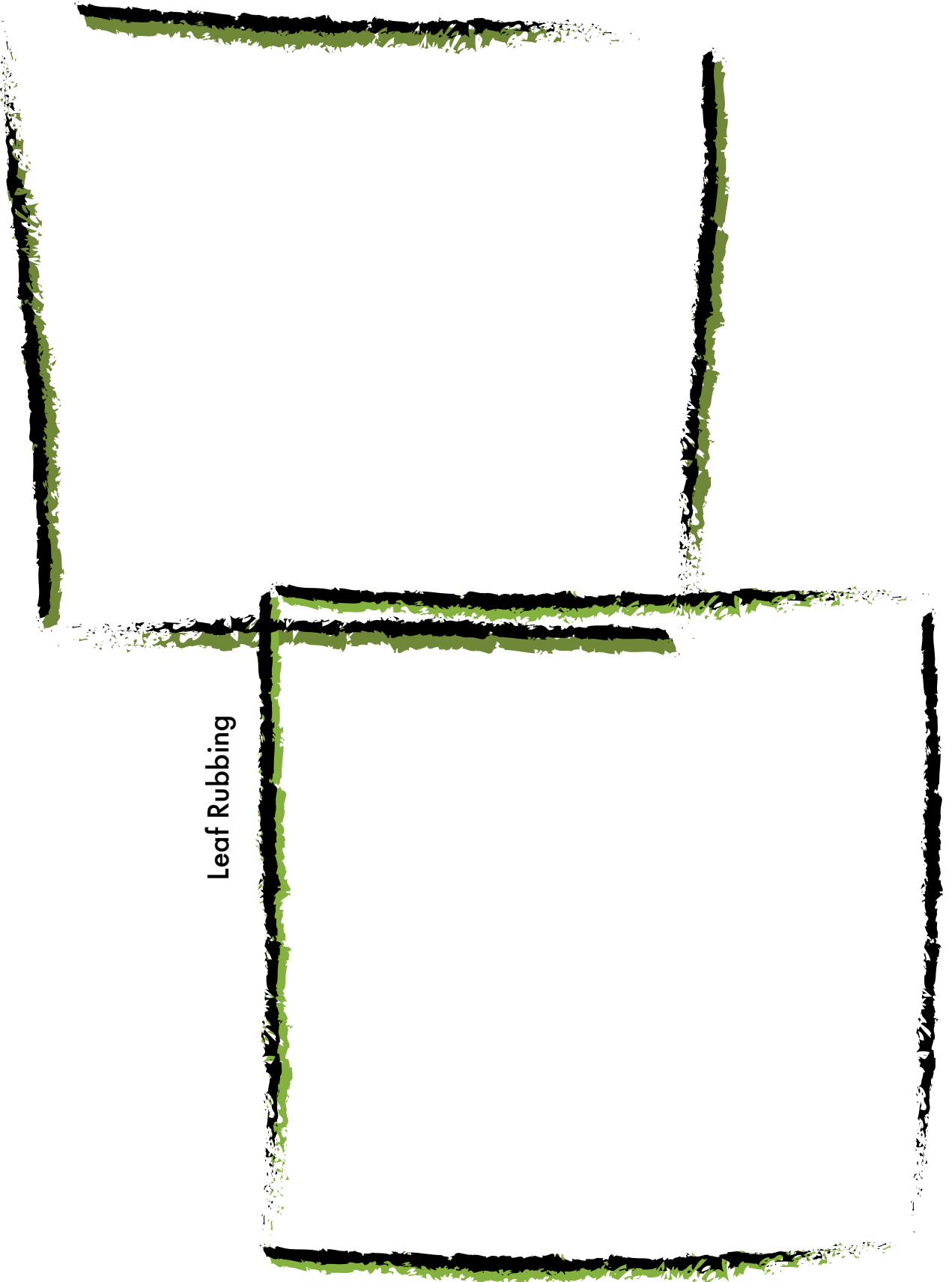


My tree is a:

Out of the Woods

DISCOVER a TREE

Bark Rubbing



Leaf Rubbing