

Music Rhythm Worksheets

Beginning
Through Intermediate
Studies

ANNETTE MACKKEY



This publication is protected by Copyright. The notice at the bottom of each page must be included on educational copies. Copies that do not contain the notice are in violation of Copyright law and subject to prosecution.

The opinions expressed in this work are solely the opinion of the author/composer. The author/composer has represented and warranted full ownership and/or legal right to publish all the materials in this book.

Music Rhythm Worksheets
All Rights Reserved
Copyright 2013 Annette Mackey

This book may not be reproduced, transmitted, or stored in whole or in part by any means, including graphic, electronic, or mechanical without the express written consent of the publisher except in accordance with the written notice at the bottom of individual worksheets. All worksheets must retain the Copyright notice or they are in violation of Copyright law. Brief quotations embodied in critical articles and reviews are permitted.

Mandolin Publishing
Boise, Idaho

ISBN: 978-0-9836104-3-4

Mandolin Publishing and the “MP” logo are trademarks belonging to Mandolin Publishing.
Printed in the United States of America

*An understanding of rhythm is one of the most important factors in a musician's ability to sight read. It is also a major factor in becoming an independent musician. Unfortunately there are few resources available to students in this area. That is why I created these worksheets. It is my hope that this unit will aid teachers in the instruction process. As such, I have included a notice on each worksheet, which allows them to be copied for noncommercial educational use **AFTER the initial purchase of the unit**. Copies made by those who have not purchased the unit are in violation of Copyright law. Worksheets that do not contain the Copyright notice are in violation of Copyright law.*

~Annette Mackey

Table of Contents

Basic Beginning Rhythm

Introducing Quarter and Half Notes, Worksheet 1.0

Quarter, Half, and Whole Notes, Worksheet 1.1

Introducing Time Signatures

Dotted Half Notes and Quarter Rests, Worksheet 1.2

Beginning Rhythm in Common Time, Worksheet 1.3

Beginning Rhythm in 3 / 4 Time, Worksheet 1.4

Beginning Rhythm

Quarter, Half, Whole Notes, and Rests, Worksheet 2.0

Quarter, Half, Dotted Half, Whole, Notes and Rests, Worksheet 2.1

Quarter, Half, Dotted Half, Whole Notes, Ties, and Rests, Worksheet 2.2

Quarter, Half, Dotted Half, Whole Notes, Ties, and Rests, Additional Practice, Worksheet 2.3

Quarter, Half, Dotted Half, Whole Notes, Ties, and Rests, Additional Practice, Worksheet 2.4

Quarter, Half, Dotted Half, Whole Notes, Ties, and Rests, Additional Practice, Worksheet 2.5

Quarter, Half, Dotted Half, Whole Notes, Ties, and Rests, Additional Practice, Worksheet 2.6

Quarter, Half, Dotted Half, Whole Notes, Ties, and Rests, Additional Practice, Worksheet 2.7

Quarter, Half, Dotted Half, Whole Notes, Ties, and Rests in 3 / 4 Time, Worksheet 2.8

Quarter, Half, Dotted Half, Whole Notes, Ties and Rests in 3 / 4 Time, Additional Practice, Worksheet 2.9

Introduction to Intermediate Rhythm

Introducing Eighth Notes, Worksheet 2.10

Introducing Eighth Rests, Worksheet 2.11

A Brief Explanation of Dotted Notes

Dotted Quarter Note Followed By Eighth Note, Worksheet 2.12

Dotted Quarter Note Followed By Eighth Note, Additional Practice, Worksheet 2.13

Dotted Quarter Note Followed by Eighth Note, Additional Practice, Worksheet 2.14

Dotted Quarter Note Followed by Eighth Note, Additional Practice, Worksheet 2.15

Eighth Note Triplets, Worksheet 2.16

Eighth Note Triplets, Additional Practice 2.17

Table of Contents (Cont.)

Intermediate Rhythm

Beginning Sixteenth Notes, Worksheet 3.0

Sixteenth Notes, Additional Practice, Worksheet 3.1

Sixteenth Notes, Additional Practice, Worksheet 3.2

Combining Concepts, Sixteenth, Eighth, Quarter, Half, Whole, Dotted, Worksheet 3.3

Combining Concepts, Additional Practice, Count As Marked, Worksheet 3.4

Dotted Sixteenth Notes and Rests, Worksheet 3.5

Half Note Receiving One Beat, Worksheet 3.6

Sixteenth Note and Eighth Note Triplets, Worksheet 3.7

Quarter Note Triplets, Worksheet 3.8

Combining Concepts with Triplets, Worksheet 3.9

Triplets, Additional Practice, Worksheet 3.10

Intermediate Rhythm, Additional Practice, Worksheet 3.11

Introduction to Compound Rhythm

A Brief Explanation of Compound Time

A Brief Explanation of Compound Time Continued

Beginning Compound Time, Worksheet 4.0

Introducing 6 / 8 Time, Worksheet 4.1

6 / 8 Time Additional Practice, Worksheet 4.2

6 / 8 Time Additional Practice, Worksheet 4.3

6 / 8 Time Additional Practice, Worksheet 4.4

Introducing 9 / 8 Time, Worksheet 4.5

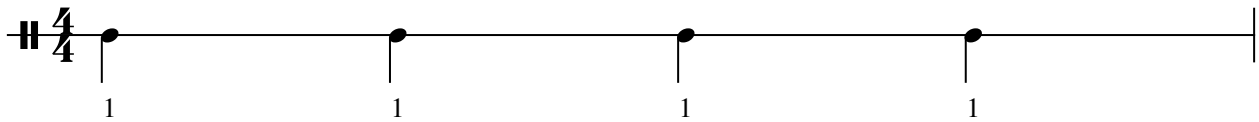
Introducing 9 / 8 Time, Worksheet 4.6 (The same music as 4.5, but without marked counts)

Introducing 12 / 8 Time, Worksheet 4.7

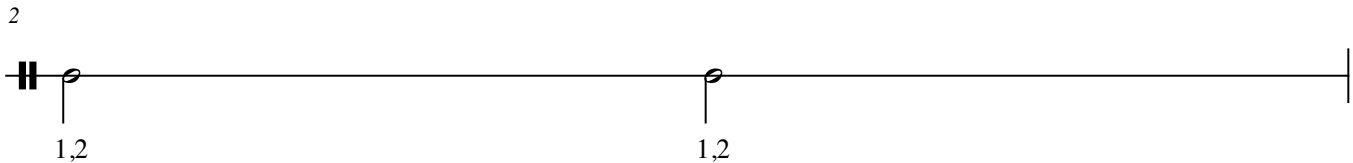
Introducing 12 / 8 Time, Worksheet 4.8 (The same music as 4.7, but without marked counts)

Introducing Quarter and Half Notes Worksheet 1.0

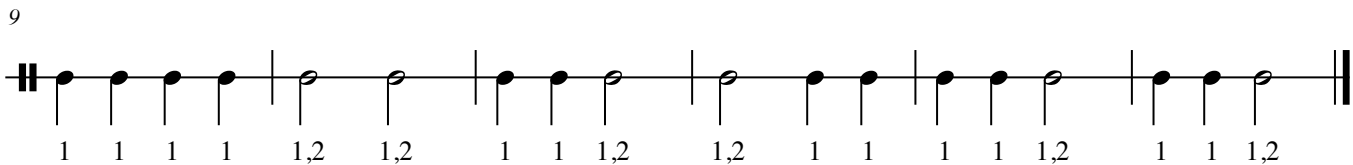
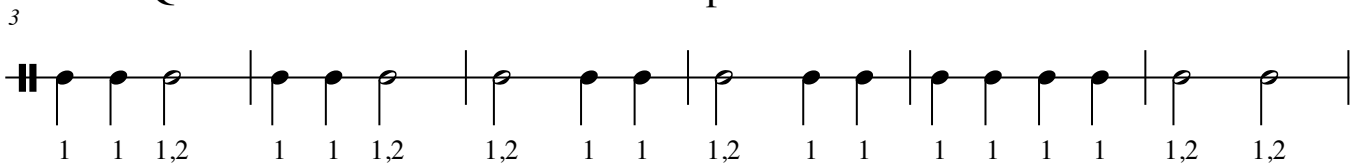
Quarter notes receive one count. Clap and count them.



Half notes receive two counts. Clap and count them.



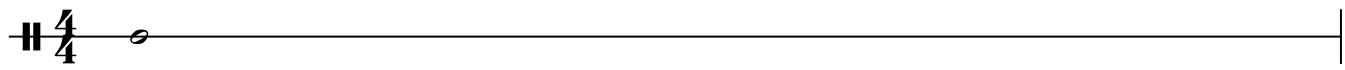
Quarter notes and half notes. Clap and count.



Quarter, Half, and Whole Notes Worksheet 1.1

Whole notes receive four counts. Clap and count.

4

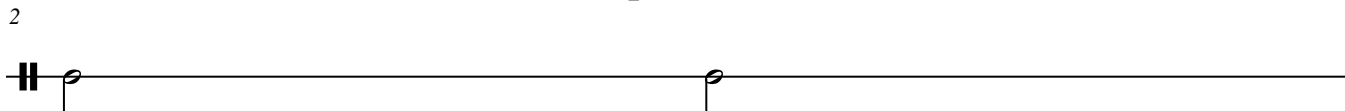


1,2,3,4

A musical staff with a treble clef and a 4/4 time signature. A single whole note is placed on the first line of the staff. Below the staff, the numbers '1,2,3,4' are written, indicating the four counts for the note.

Half notes receive two counts. Clap and count.

2




1,2 1,2

A musical staff with a treble clef and a 2/2 time signature. Two half notes are placed on the first line of the staff, one in the first measure and one in the second measure. Below the staff, the numbers '1,2' are written under each note, indicating the two counts for each note.

Quarter notes receive one count. Clap and count.

3

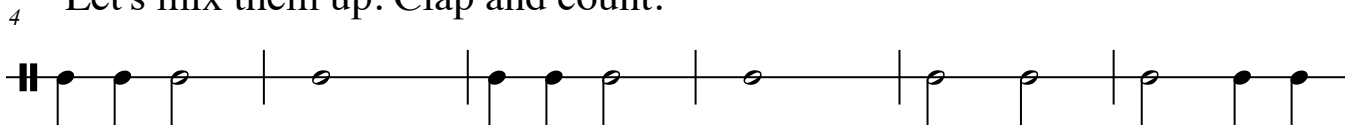


1 1 1 1

A musical staff with a treble clef and a 4/4 time signature. Four quarter notes are placed on the first line of the staff, one in each of the four measures. Below the staff, the number '1' is written under each note, indicating the one count for each note.

Let's mix them up. Clap and count.


4



1 1 1,2 1,2,3,4 1 1 1,2 1,2,3,4 1,2 1,2 1,2 1 1

A musical staff with a treble clef and a 4/4 time signature. The staff is divided into measures by vertical bar lines. The notes and their counts are: quarter (1), quarter (1), half (1,2), whole (1,2,3,4), quarter (1), quarter (1), half (1,2), whole (1,2,3,4), half (1,2), half (1,2), half (1,2), quarter (1), quarter (1).

10



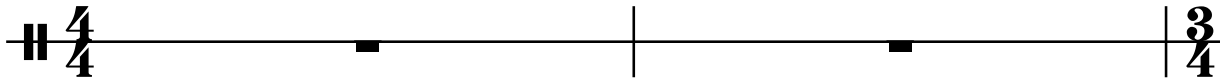
1 1 1 1 1,2,3,4 1 1 1,2 1 1 1 1 1,2,3,4

A musical staff with a treble clef and a 4/4 time signature. The staff is divided into measures by vertical bar lines. The notes and their counts are: quarter (1), quarter (1), quarter (1), quarter (1), whole (1,2,3,4), quarter (1), quarter (1), half (1,2), quarter (1), quarter (1), quarter (1), quarter (1), whole (1,2,3,4).

Time Signatures

Notice that at the top left hand corner of the music are the numbers 4 / 4 stacked over the top of one another. This is not a fraction. This is the time signature. The top number tells us how many counts are in each measure. The bottom number tells us what kind of note receives one count. From now on, we will count music within time signatures.

A four on the top means that there are four counts in each measure.



A four on the bottom means that the quarter note will receive one count.

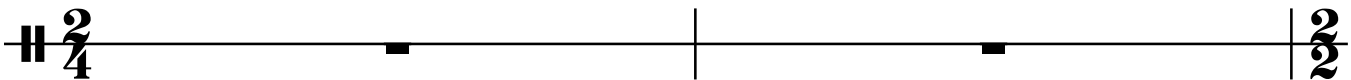
Upcoming time signature changes which occur at the beginning of the next line are marked in advance.

A three on the top means that there are three counts in each measure.



Four is still on the bottom, so the quarter note will receive one count.

A two on the top means that there are two counts in each measure.



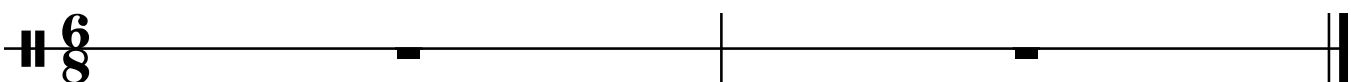
Four is still on the bottom, so the quarter note will receive one count.

Again we have a two on the top. There are two counts in each measure.



Now two is on the bottom, so a half note will receive one count.

Six is on the top. There are six counts in each measure.



Eight is on the bottom. The eighth note will receive one count.

Dotted Half Notes and Quarter Rest

Worksheet 1.2

Dotted half notes get three counts. Clap and Count.

1

1,2,3

2 Half notes and quarter notes.

1,2,3 1,2 3 1,2 3 1,2,3

6 Quarter rests get one count. Snap on the rests.

1 2 3

Let's mix it all together: Clap and count, snap on the rests.
Quarter notes, quarter rests, dotted half notes, and half notes.

7

1 2 3 1 2 3 1,2 3 1 2,3

11

1 2 3 1,2,3 1,2,3 1 2 3

Beginning Rhythm in Common Time

Worksheet 1.3

Counting in 4 / 4 time. Each measure must add up to four counts.
Clap and count the notes. Snap on the rests.

4

1 2 3 4 1,2 3,4 1,2,3,4

7

1 2,3,4 1 2 3,4 1,2 3 4

10

1 2 3,4 1,2,3 4 1,2,3,4

13

1 2 3 4 1 2 3,4 1,2,3,4

16

1 2 3 4 1,2 3,4 1,2,3 4

19

1 2 3 4 1,2,3,4 1 2 3 4

Beginning Rhythm in 3 / 4 Time

Worksheet 1.4

Clap and count the notes. Snap on the rests.

3/4

1 2 3 1,2 3 1,2,3

4

1 2,3 1,2 3 1,2 3

7

1 2 3 1,2,3 1 2,3

10

1,2,3 1,2 3 1 2 3

13

1 2 3 1,2 3 1,2 3

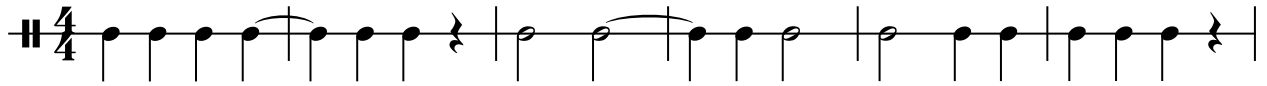
16

1 2,3 1 2 3 1,2,3

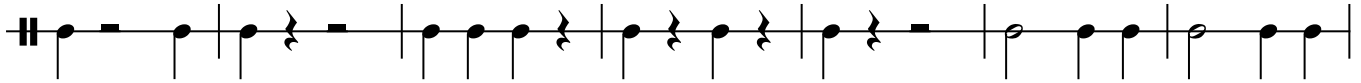
19

1,2 3 1 2 3 1 2,3

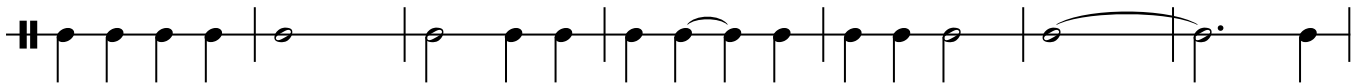
Quarter, Half, Dotted Half, Whole Notes, Ties, and Rests Worksheet 2.2



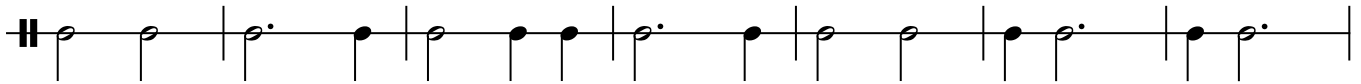
7



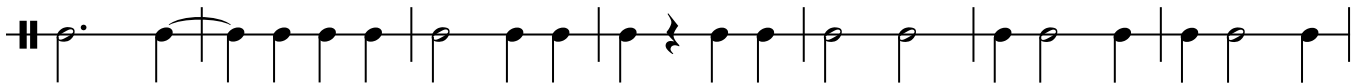
14



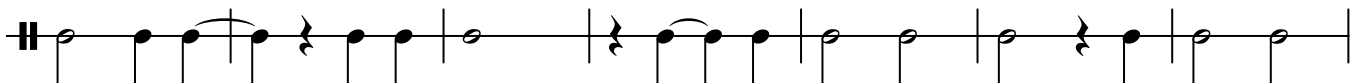
21



28



35



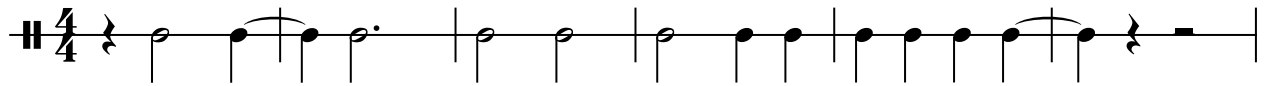
42



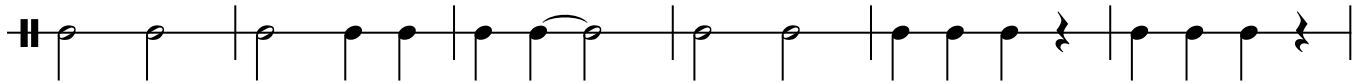
49



Quarter, Half, Dotted Half, Whole Notes, Ties, and Rests, Additional Practice Worksheet 2.5



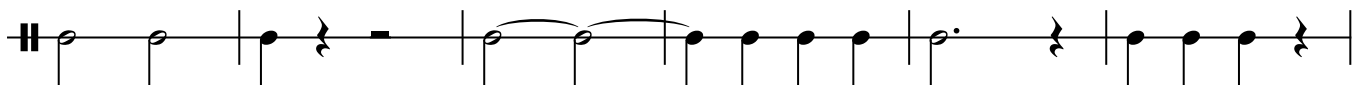
7



13



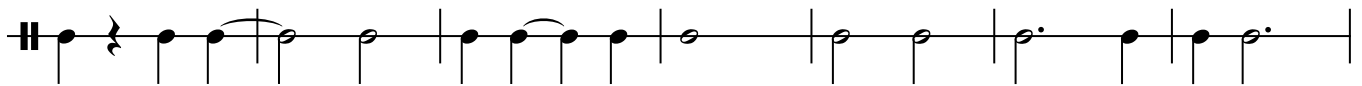
19



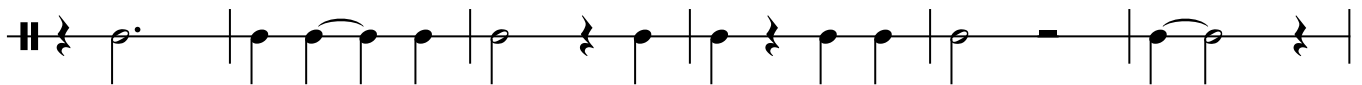
25



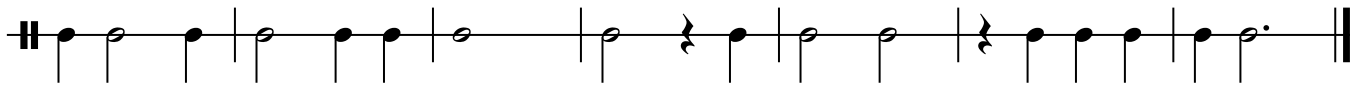
31



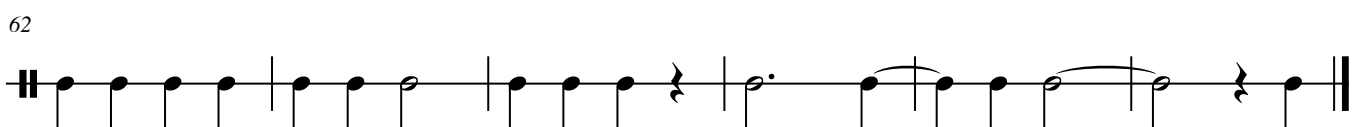
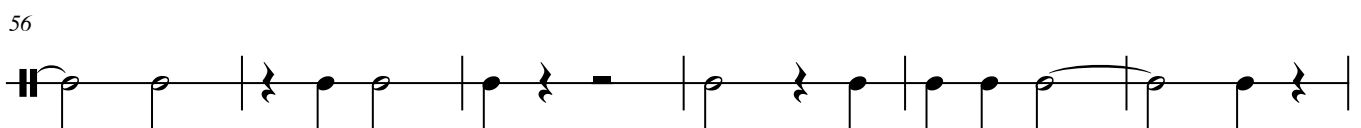
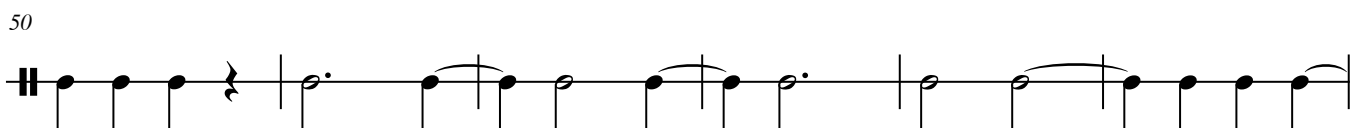
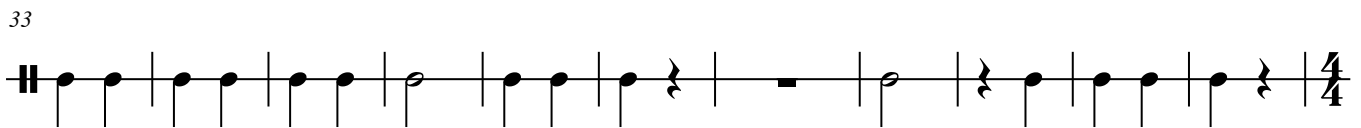
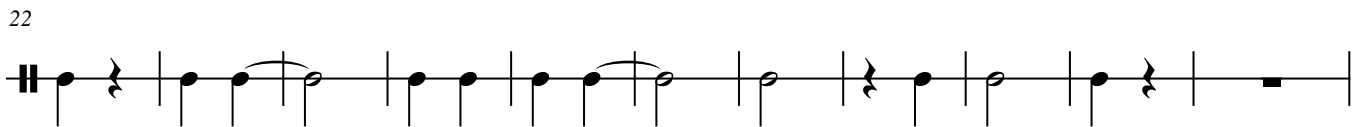
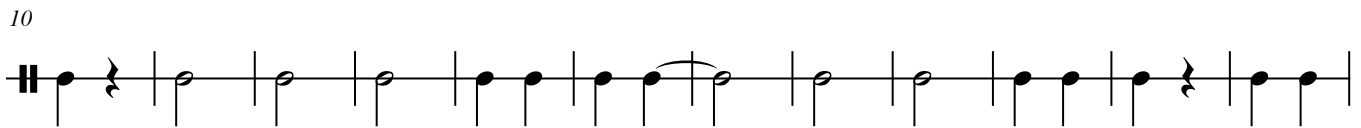
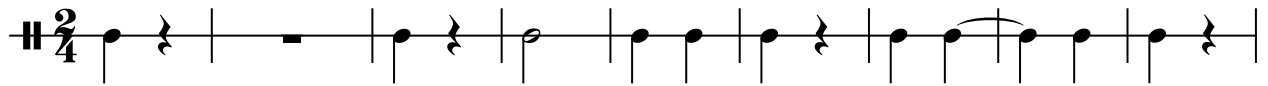
38



44

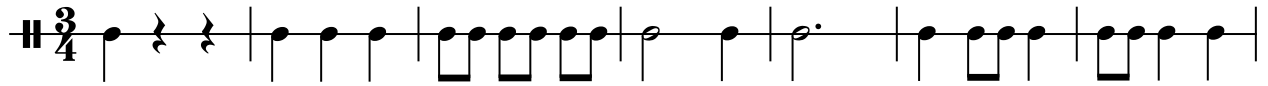


Quarter, Half, Dotted Half, Whole Notes, Ties, and Rests, Additional Practice Worksheet 2.7

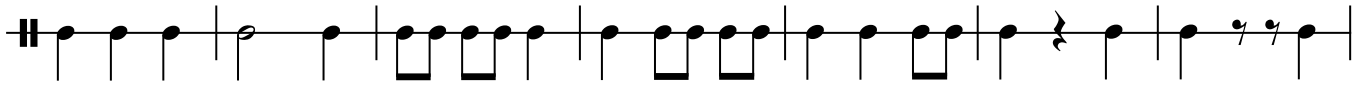


Introducing Eighth Rests

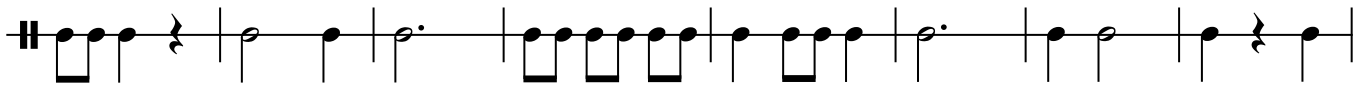
Worksheet 2.11



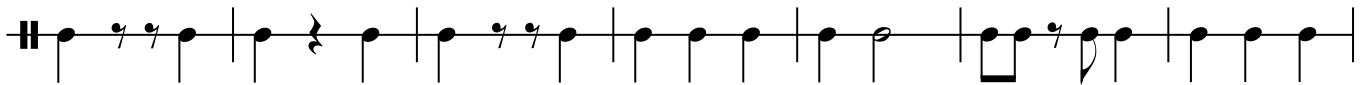
8



15



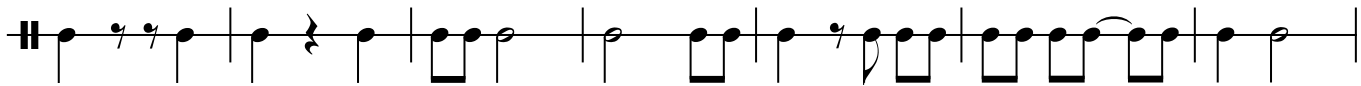
23



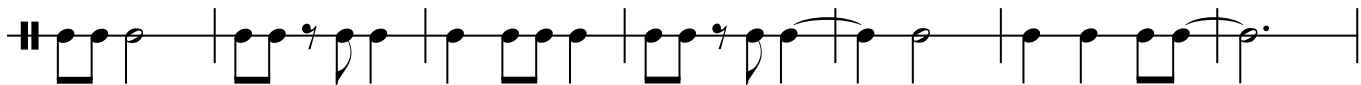
30



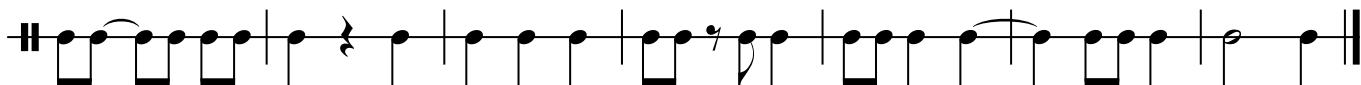
37



44



51



A Brief Explanation of Dotted Notes

The following equation may be used to determine dotted note values.

Take the NOTE VALUE and add HALF of the NOTE VALUE to equal the DOTTED NOTE VALUE.

$$\text{♩ (half note)} + \text{♩ (half of half note is quarter note)} = \text{♩.}$$

$$\text{♩} + \text{♩} = \text{♩.}$$

$$2 \text{ counts (half note value)} + 1 \text{ count (half of half note value)} = 3$$

$$1 + 1/2 = 1 \frac{1}{2}$$

3

3

5

Music "spacing" does not alter the rhythm of the music. Even though the beats in the line below do not line up precisely with the line above, the rhythmic location of the beats remains constant.

7

9

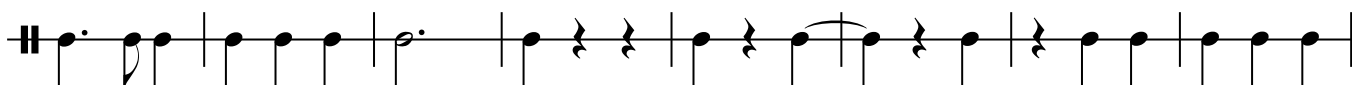
11

13

Dotted Quarter Note Followed By Eighth Note Worksheet 2.12



7



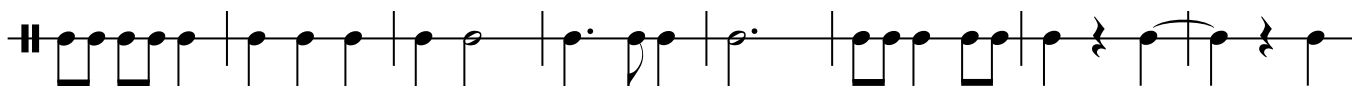
15



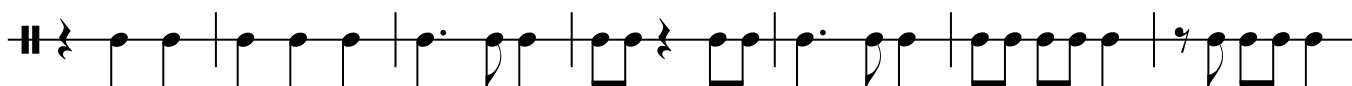
23



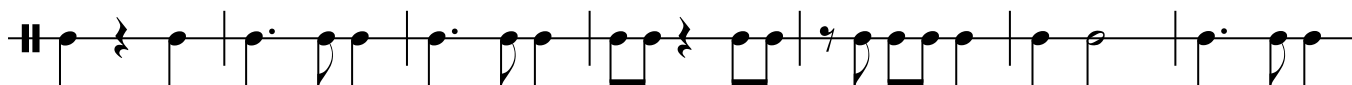
31



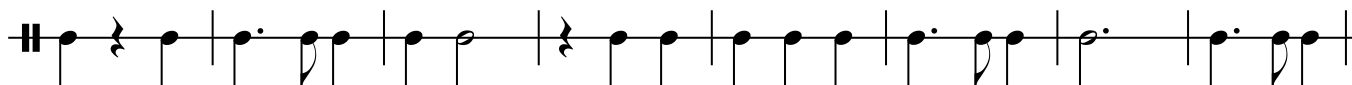
39



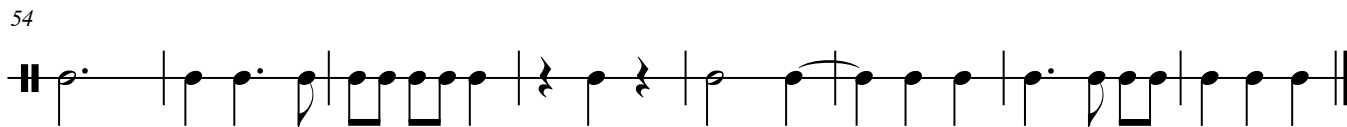
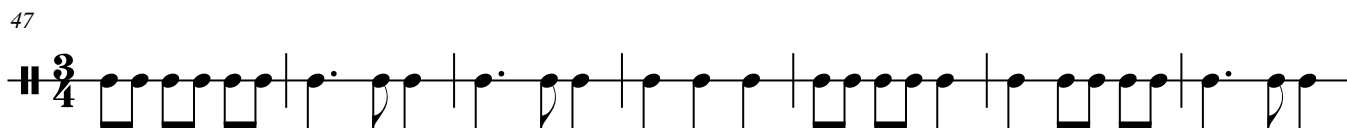
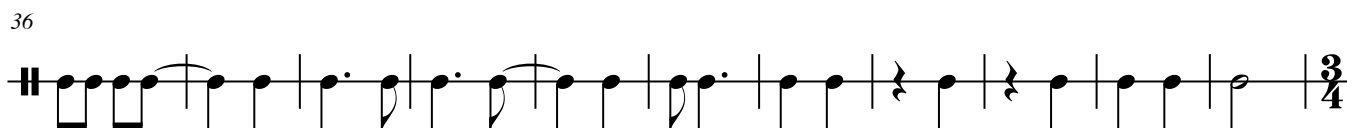
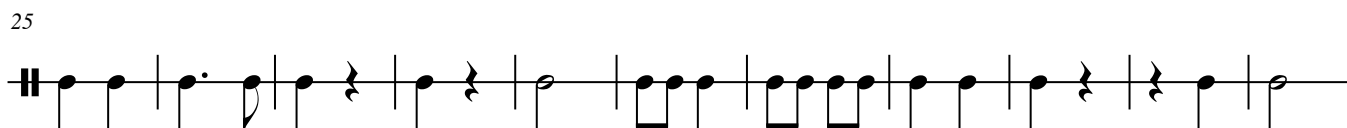
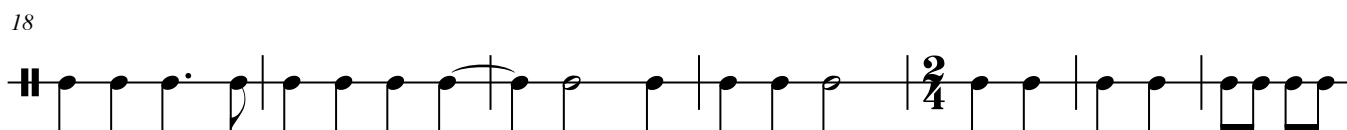
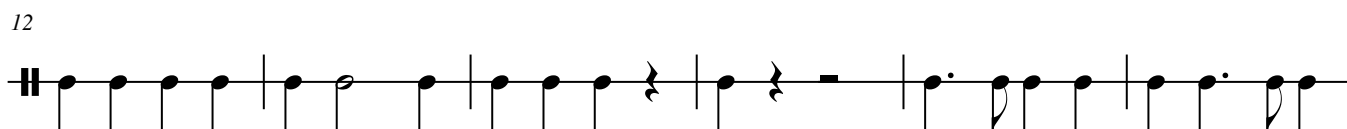
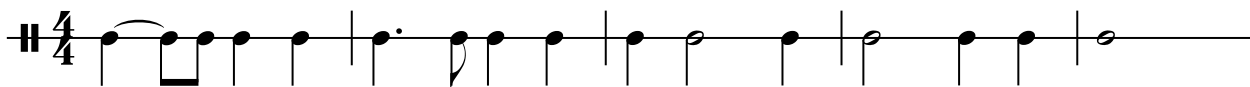
46



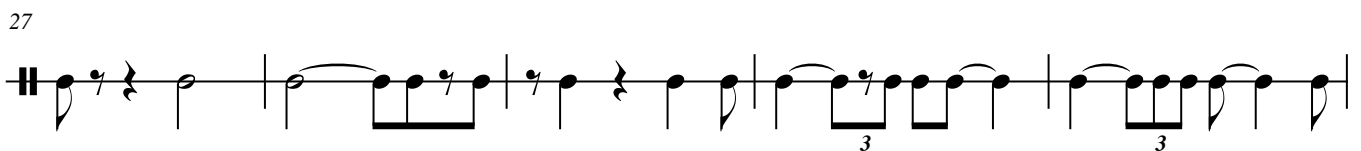
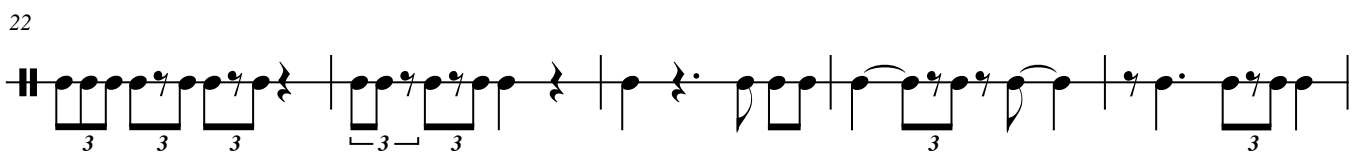
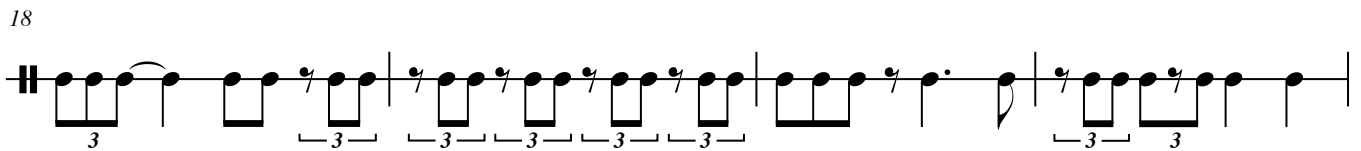
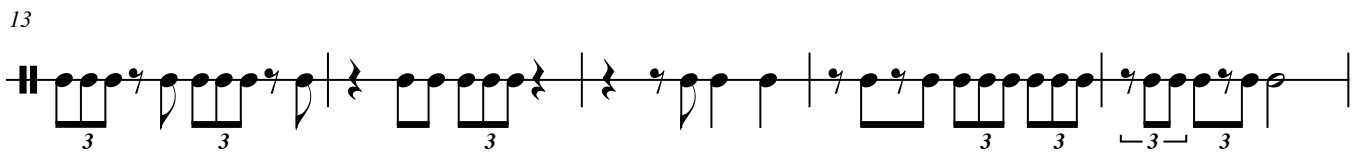
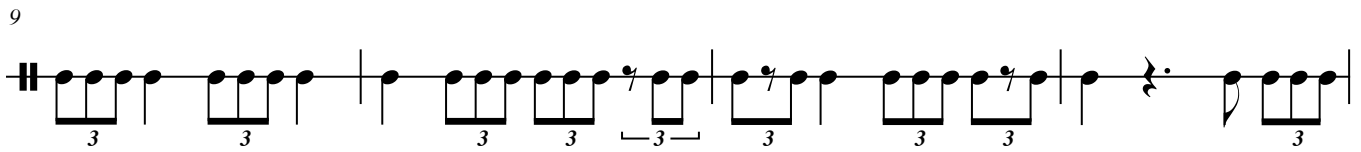
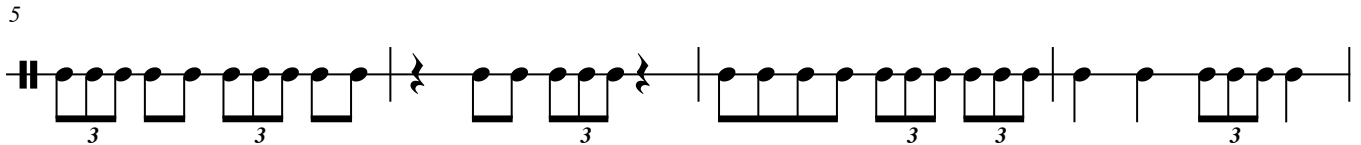
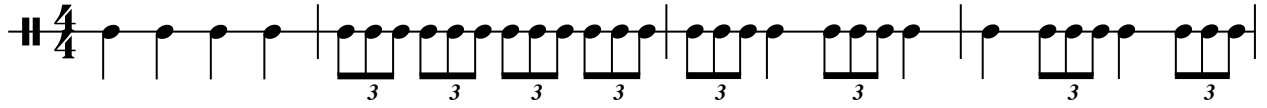
53



Dotted Quarter Note Followed By Eighth Note Additional Practice Worksheet 2.13



Eighth Note Triplets, Additional Practice Worksheet 2.17



Beginning Sixteenth Notes Worksheet 3.0

In 4 / 4 time there are 4 quarter notes per measure, 8 eighth notes, and 16 sixteenth notes.

Repeat as necessary for understanding of note relationships

4/4

1 2 3 4 1 & 2 & 3 & 4 & 1 e & a 2 e & a 3 e & a 4 e & a

4

8

12

1 & a 2 3 4 1 & a 2 3 & a 4 a 1 & a 2 & a 3 & a 4 & a 1 2 3 4

16

1 e & 2 3 4 1 2 e & 3 4 e & 1 e & 2 e & 3 e & 4 e & 1 2 & 3 e & 4

20

1 & 2 & a 3 4 e & 1 e & 2 & 3 4 & a 1 & a 2 3 & a 4 1 & a 2 3 & a 4

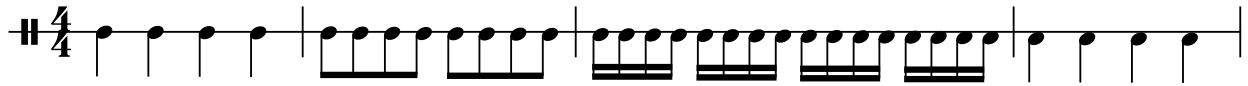
23

1 e & a 2 e & a 3 e & a 4 1 & 2 e & 3 4 & 1 & 2 & a 3 e & a 4 e & 1 & 2 & a 3 e & a 4 e &

26

1 & 2 & a 3 & 4 & a 1 2 e & a 3 e & a 4 e & 1 & 2 3 e & a 4 & 1 2,3 4 e &

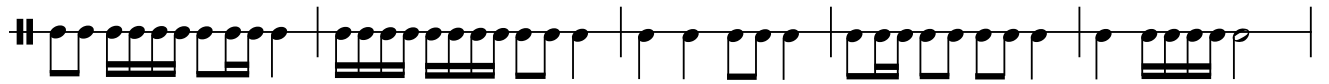
Sixteenth Notes, Additional Practice Worksheet 3.1



5



9



14



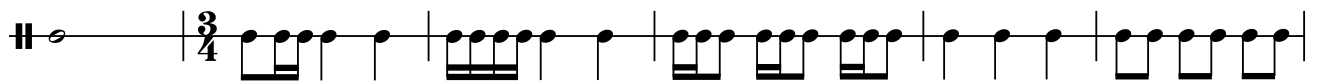
19



24



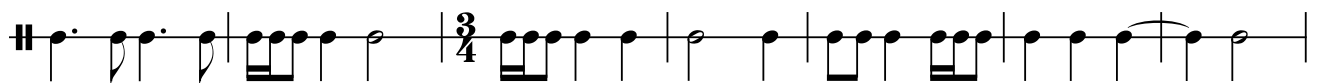
28



34



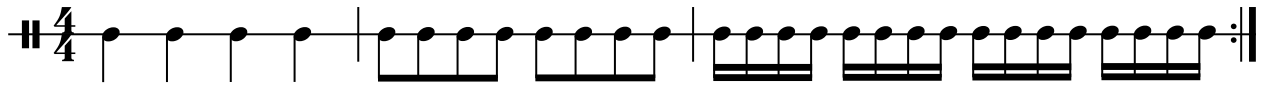
39



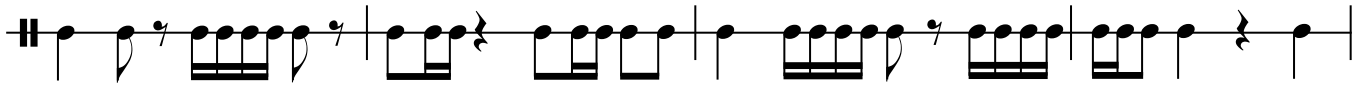
46



Sixteenth Notes, Additional Practice Worksheet 3.2



4



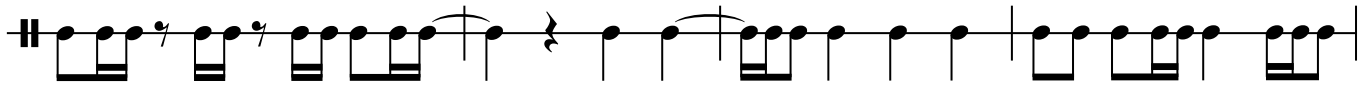
8



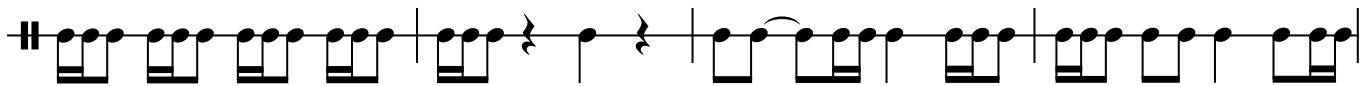
11



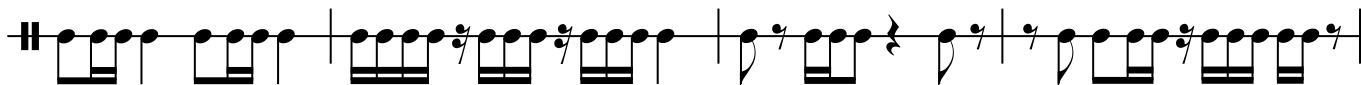
14



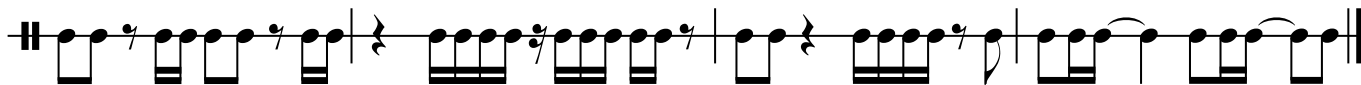
18



22



26



Combining Concepts

Additional Practice, Count As Marked

Worksheet 3.4

4/4

5

1,2, 3,4 & a 1,2 & 3,4 & a 1 e & a 2,3, 4 & a

9

1,2 3 a 4 e & a 1 & a 2 & a 3 e & a 4 e & a 1 e & 2 3,4

12

1 & a 2 & a 3 & a 4 e & 1 2 3 4 a 1 e & a 2 & a 3 & a 4 e, & a

15

1 e & 2 3 4 a 1 & 2 3 & 4 & 1 & 2 & 3 & 4 & 1 & 2,3 4 &

19

1 2 & 3 4 & 1 & 2 & 3,4 1,2,3,4 1 & 2 e,& a 3 & 4 1,2,3 4

24

1 & 2 & 3,4 1 & 2 3 & 4 & 1 e & 2 3,4 1 2 3 e,& a 4 e,& a

28

1 e & a 2 e,&a 3 e,&a 4 1 & a 2 & a 3 & a 4 e & 1 & 2 e,& a 3 & 4 1,2,3,4 1 2 3 4

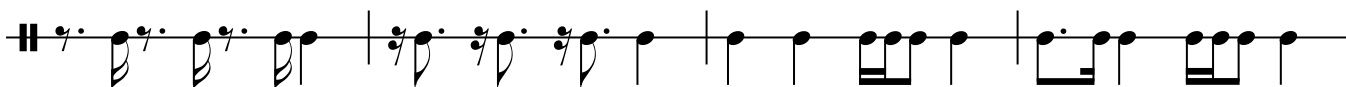
Dotted Sixteenth Notes and Rests Worksheet 3.5



4



8

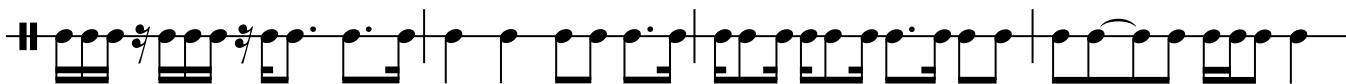


12



1 e & 2 & a 3 e & 4 & a 1 e & 2 & a 3 e & 4 & a

16



20



1 e & a 2 e & a 3e,&a 4,e,& a 1 e & a,2 e & a 3e,&a 4,e,& a

23



1 & 2 & 3 e & 4 1 & 2 & 3 e & 4

27



1 e & 2 e & 3 a 4 1 e,& a 2 e,& a 3 a 4 a 1 e & a 2 e & a 3 e,&a 4 a

Sixteenth Note and Eighth Note Triplets Worksheet 3.7

4

4

7

11

15

22

30

36

Quarter Note Triplets

Worksheet 3.8

3 quarter note triplets equal the same amount of time as 1 half note.

6

11

16

22

29

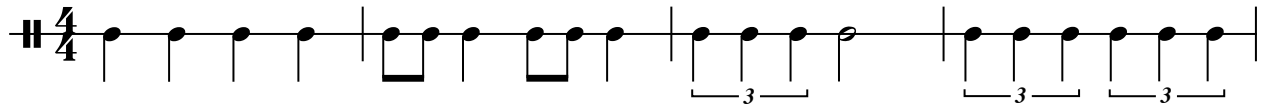
38

47

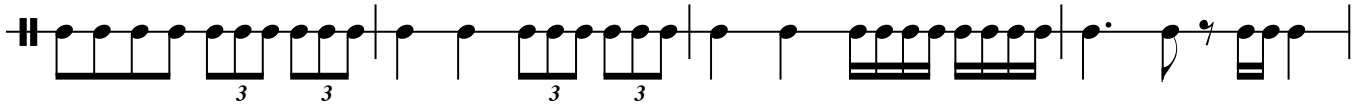
Copyright 2013 by Annette Mackey. AFTER INITIAL PURCHASE a copy may be made for educational, non-commercial use. All copies must contain this notice. <http://www.annettemackey.com>

Combining Concepts with Triplets

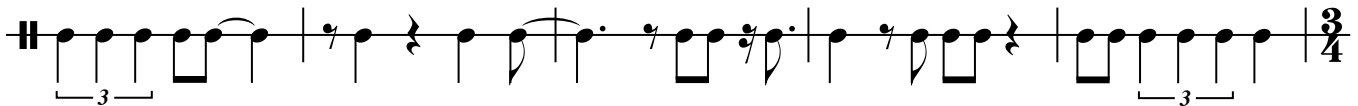
Worksheet 3.9



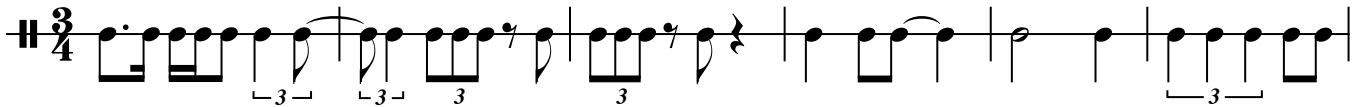
5



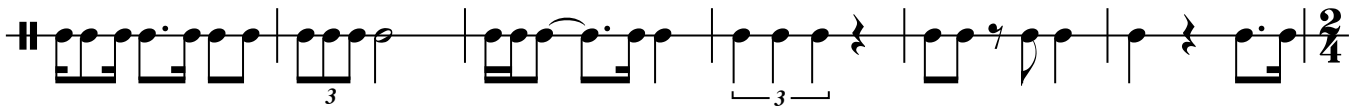
9



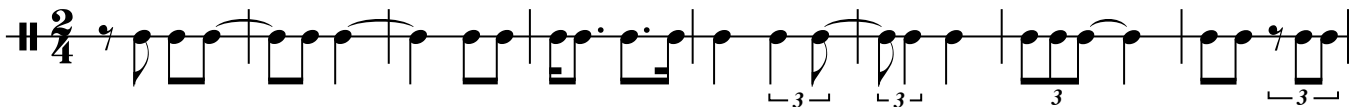
14



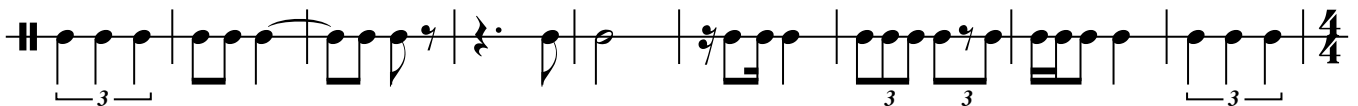
20



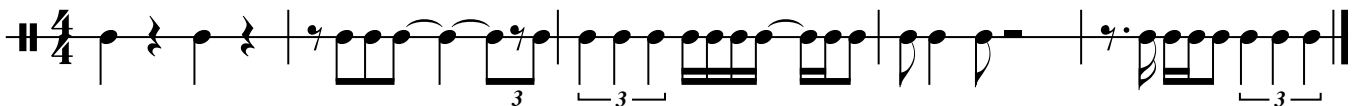
26



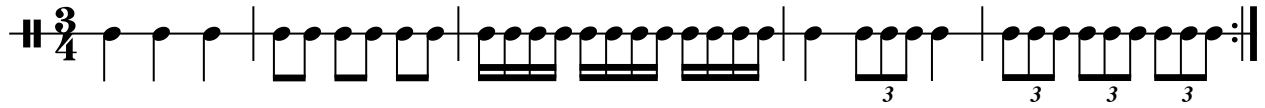
34



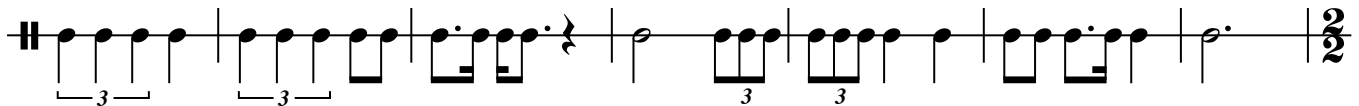
43



Intermediate Rhythm, Additional Practice Worksheet 3.11



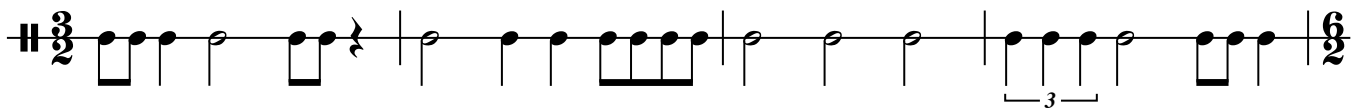
6



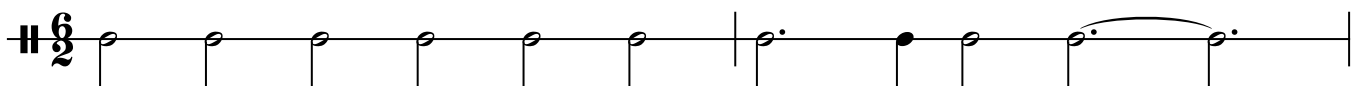
13



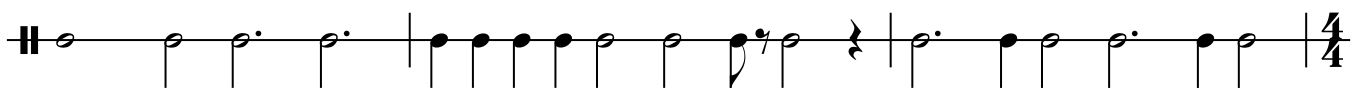
18



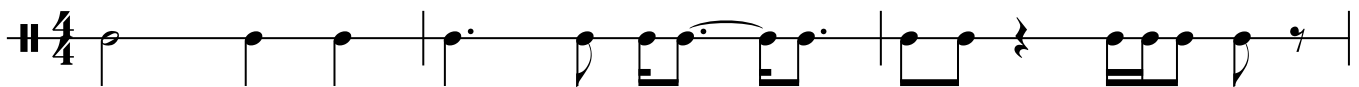
22



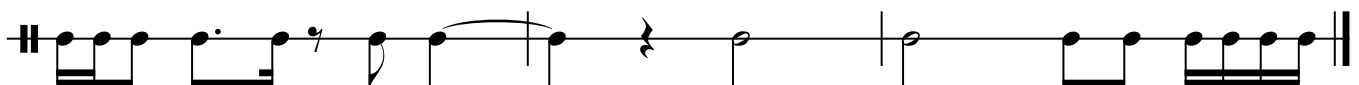
24



27



30



A Brief Explanation of Compound Time

3 / 8, 6 / 8, 9 / 8, and 12 / 8

Compound time is notorious for confusing students. Compound Time consists of any time signature with an 8 on the bottom. It is not necessarily more complicated. Just remember that in compound time, music is based upon THREE. There are three eighth notes per dotted quarter note. This is why the eighth notes are beamed in sets of three. In contrast, simple time is based upon TWO, with two eighth notes per quarter note. At first it may seem that these systems are the same. They are not. The difference lies in the strong beats. In simple time, the strong beat is divisible by two. In compound time, the strong beat is divisible by three. You **MUST NOT** attempt to turn 6 / 8 time into 3 / 4 time because time signatures are **NOT** fractions. They are indications of where rhythmic stress is located. See the break-out for each time signature below.

3 / 8 time: There are three eighth notes per measure with ONE strong beat per measure. It may be counted as follows:

1, 2, 3

or

1 & a (Or as instructed by your teacher.)

6 / 8 time: There are six eighth notes per measure with TWO strong beats per measure. It may be counted as follows:

1, 2, 3, 4, 5, 6

or

1 & a, **2** & a

9 / 8 time: There are nine eighth notes per measure with THREE strong beats per measure. It may be counted as follows:

1, 2, 3, 4, 5, 6, 7, 8, 9

or

1 & a, **2** & a, **3** & a

12 / 8 time: There are twelve eighth notes per measure with FOUR strong beats per measure. It may be counted as follows:

1, 2, 3, 4, 5, 6, 7, 8, 9, 10, 11, 12

or

1 & a, **2** & a, **3** & a, **4** & a

A Brief Explanation of Compound Time

3 / 8, 6 / 8, 9 / 8, and 12 / 8

3 / 8 time: There are three eighth notes per measure with one strong beat per measure. It may be counted as follows: 1, 2, 3, OR 1 & a. (Or as instructed by your teacher.)

Musical notation for 3/8 time. The first measure contains three eighth notes with a bracket underneath, counted as "1 & a". The second measure contains two eighth notes and a quarter note, counted as "1 & a". The third measure contains a quarter note and a dotted quarter note, counted as "1, & a". The piece ends with a double bar line and a 3/8 time signature.

6 / 8 time: There are six eighth notes per measure with two strong beats per measure. It may be counted as: 1, 2, 3, 4, 5, 6, OR 1 & a, 2 & a.

Musical notation for 6/8 time. The first measure contains six eighth notes with a bracket underneath, counted as "1 & a 2 & a". The second measure contains a quarter note, two eighth notes, and a quarter note, counted as "1, & a 2 & a". The third measure contains a dotted quarter note, a dotted quarter note, and a half note, counted as "1, & a 2, & a 1, & a, 2, & a". The piece ends with a double bar line and a 6/8 time signature.

9 / 8 time: There are nine eighth notes per measure with three strong beats per measure. It may be counted as: 1, 2, 3, 4, 5, 6, 7, 8, 9, OR 1 & a, 2 & a, 3 & a.

Musical notation for 9/8 time. The first measure contains nine eighth notes with a bracket underneath, counted as "1 & a 2 & a 3 & a". The second measure contains a quarter note, two eighth notes, and a quarter note, counted as "1 & a 2 & a 3 & a". The third measure contains a dotted quarter note, a dotted quarter note, and a half note, counted as "1, & a 2, & a 3, & a". The piece ends with a double bar line and a 9/8 time signature.

12 / 8 time: There are twelve eighth notes per measure with four strong beats per measure. It may be counted as: 1, 2, 3, 4, 5, 6, 7, 8, 9, 10, 11, 12, OR 1 & a, 2 & a, 3 & a, 4 & a.

Musical notation for 12/8 time. The first measure contains twelve eighth notes with a bracket underneath, counted as "1 & a 2 & a 3 & a 4 & a". The second measure contains a dotted quarter note, a dotted quarter note, and a half note, counted as "1, & a 2, & a 3, & a 4, & a". The third measure contains a dotted quarter note, a dotted quarter note, and a half note, counted as "1, & a, 2, & a 3, & a, 4, & a". The piece ends with a double bar line and a 12/8 time signature.

Beginning Compound Time

Worksheet 4.0

11

1 2 3 1,2,3 1 2 3 1,2,3 1,2 3 1,2 3 1 2 3 1,2,3 1 2 3 1,2,3 1 2 3

12

1,2,3 1,2 3 1,2 3 1 2 3 1 2,3 1 2,3 1 2 3 1 2,3 1 2 3 1,2,3 1 2 3 1 2,3

24

1,2 3 1,2,3 1 2 3 1 2 3 1,2 3 1,2 3 1 2,3 1,2 3 1 2 3 1,2,3 1 2,3 1 2 3 1,2,3 1 2,3 1 2,3

36

1,2 3 1,2 3 1 2,3 1 2 3 1,2,3 1 2 3 1,2,3 1 2 3 1,2,3 1 2 3 1,2,3 1 2 3 1,2,3 1 2 3 1,2 3 1,2 3 1 2 3

48

1,2,3 1 2 3 1,2,3 1 2 3 1,2,3 1 2 3 1,2,3 1 2 3 1 2 3 1 2,3 1 2,3 1 2 3 1 2,3 1 2,3 1 2 3 1 2,3 1 2,3

59

1 2 3 1,2 3 1 2 3 1 2,3 1,2 3 1,2,3 1,2 3 1,2,3 1,2 3 1 2,3 1,2,3 1 2 3 1 2,3 1 2 3 1 2 3

70

1 2 3 1 2 3 1 2 3 1,2 3 1,2 3 1,2 3 1 2 3 1 2 3 1 2,3 1 2,3 1 2 3 1 2,3 1 2 3 1 2 3

81

1 2,3 1,2 3 1,2 3 1,2 3 1,2,3 1 2 3 1 2,3 1 2 3 1 2 3 1,2 3 1,2,3

Introducing 6 / 8 Time

Worksheet 4.1

1 2 3 4 5 6 | 1,2,3 4,5,6 | 1 2 3 4,5,6 | 1,2,3, 4 5 6 | 1,2, 3 4,5,6 | 1 2 3 4 5 6

7

1,2,3 4,5 6 | 1,2,3,4,5,6 | 1,2, 3 4,5, 6 | 1 2,3 4 5,6 | 1,2,3 4,5 6 | 1,2,3 4 5 6 | 1,2 3 4,5,6

14

1 2 3 4 5 6 | 1 2,3 4 5,6 | 1 2,3 4 5,6 | 1,2,3,4,5,6 | 1,2 3 4 5,6 | 1,2,3 4 5 6

20

1 2 3 4 5,6 | 1 2 3 4,5,6 | 1 2,3 4,5 6 | 1,2,3 4,5 6 | 1,2,3 4 5 6 | 1,2,3 4 5 6

26

1,2 3 4 5 6 | 1,2 3 4 5 6 | 1 2,3 4,5,6 | 1,2,3 4,5 6 | 1 2 3 4,5 6 | 1 2 3 4 5 6

32

1 2 3 4 5 6 | 1,2 3 4 5,6 | 1 2 3 4 5,6 | 1 2 3 4 5 6 | 1,2 3 4,5 6 | 1 2 3 4 5 6

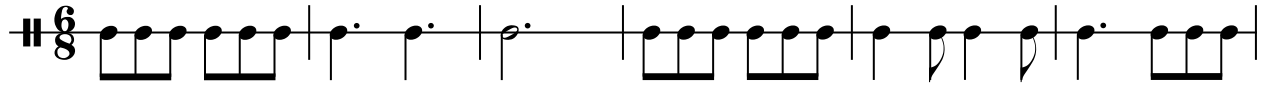
38

1 2,3 4 5,6 | 1,2,3,4,5,6 | 1 2,3 4 5,6 | 1,2,3 4,5 6 | 1,2 3 4,5 6 | 1,2 3 4 5,6

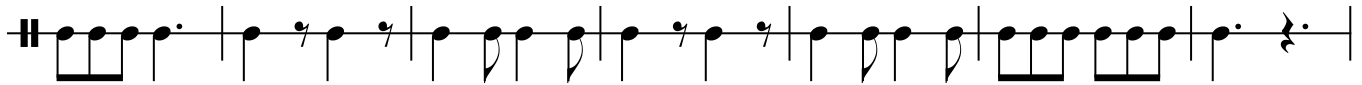
44

1 2 3 4 5,6 | 1 2 3 4,5,6 | 1 2 3 4 5 6 | 1 2,3 4 5,6 | 1 2 3 4 5 6 | 1,2,3,4,5,6

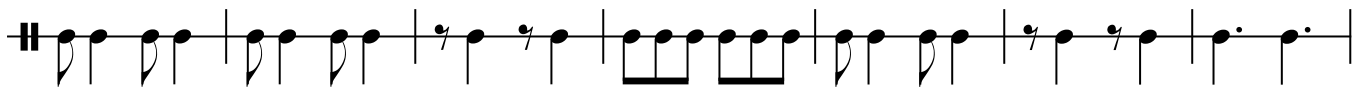
6 / 8 Time Additional Practice Worksheet 4.2



7



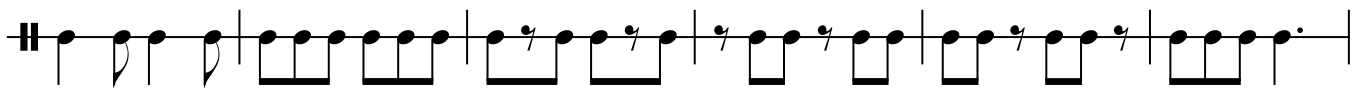
14



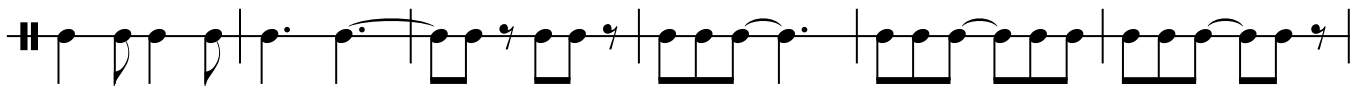
21



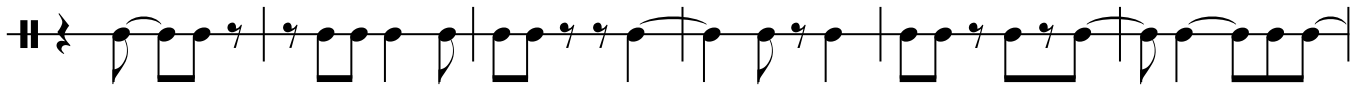
28



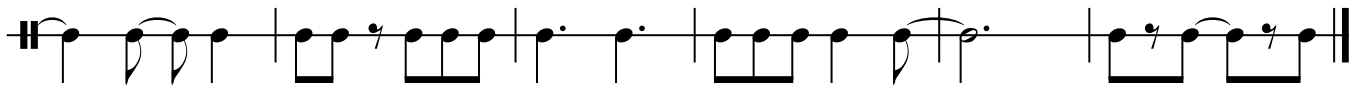
34



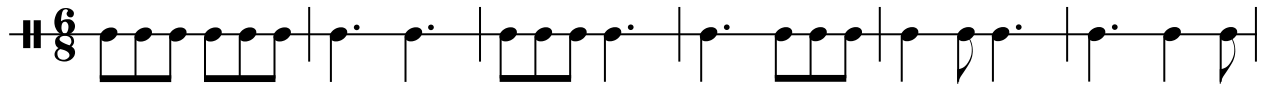
40



46



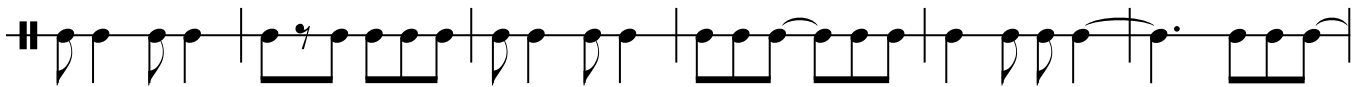
6 / 8 Time Additional Practice Worksheet 4.3



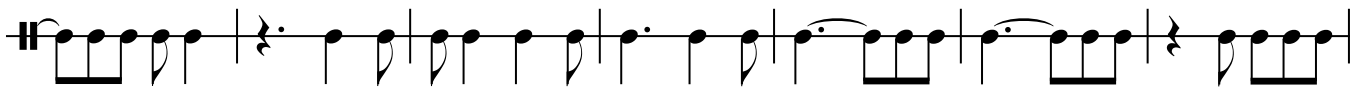
7



14



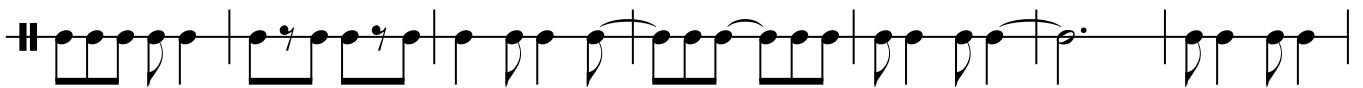
20



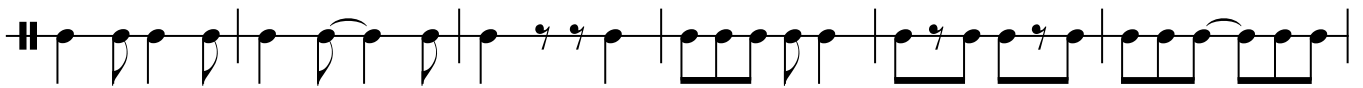
27



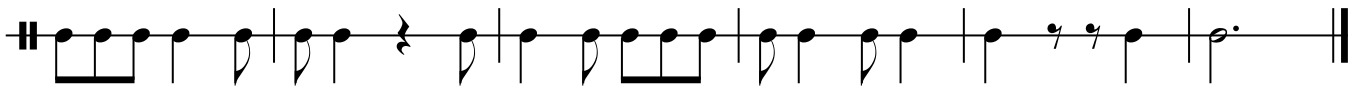
34



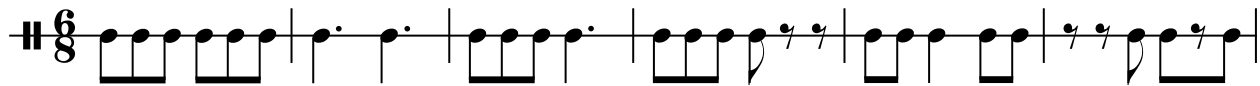
41



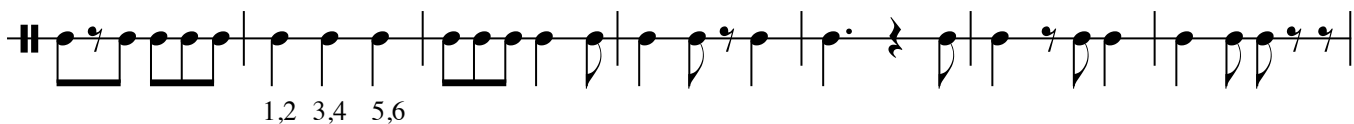
47



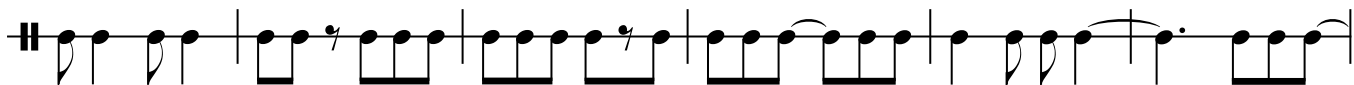
6 / 8 Time Additional Practice Worksheet 4.4



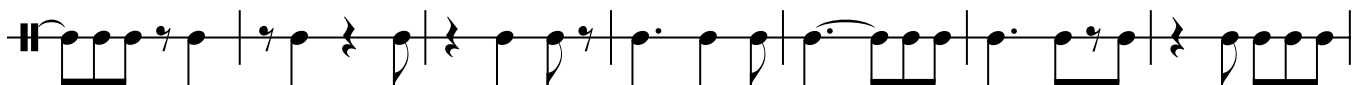
7



14



20



27



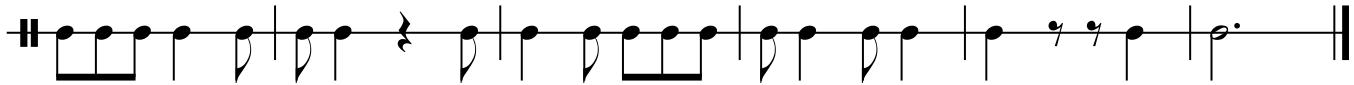
33



40

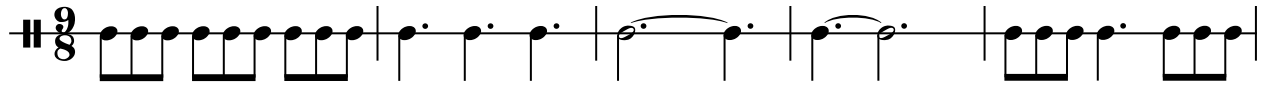


47

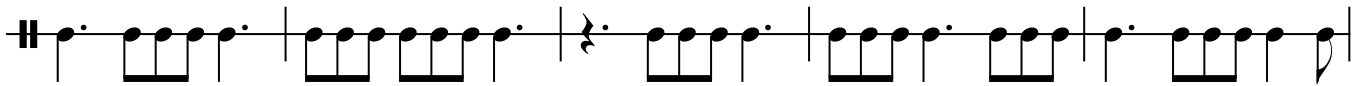


Introducing 9 / 8 Time

Worksheet 4.6



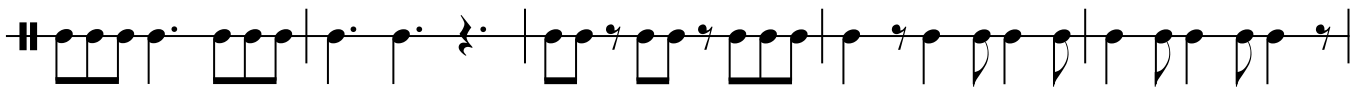
6



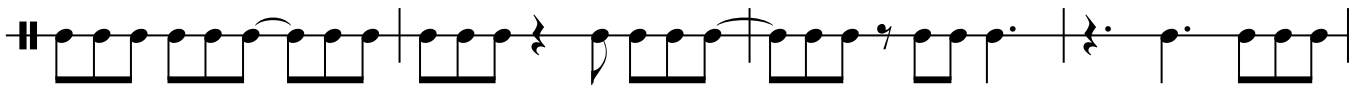
11



16



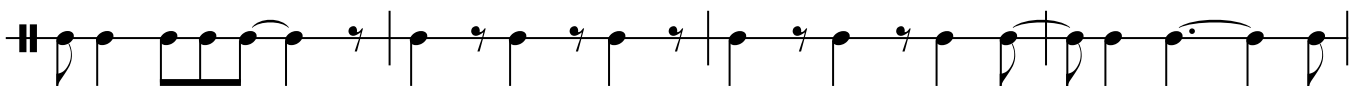
21



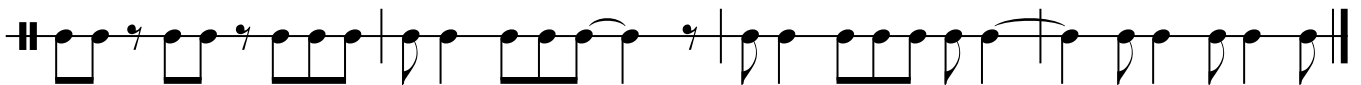
25



29



33



Introducing 12 / 8 Time Worksheet 4.7

1 & a 2 & a 3 & a 4 & a 1,&a2,&a3,&a4,&a 1,&a,2,&a3,&a4,&a 1,&a,2,&a 3,&a4,&a

5

1,&a 2 & a 3,&a 4 & a 1 & a 2,&a 3 & a 4,&a 1 & a 2 & a 3,&a 4 & a

8

1 & a 2 & a 3 & a 4 & a 1 & a 2 & a 3 & a 4 & a 1 & a 2,&a 3 & a 4,&a

11

1 & a 2,&a 3 & a 4,&a 1 & a 2,&a 3 & a 4,&a 1 & a 2,&a 3 & a 4,&a 1,&a 2,&a 3,&a 4,&a

15

1 & a 2 & a 3,&a 4 & a 1 & a 2 & a 3,&a 4 & a 1 & a 2 & a 3 & a 4 & a

18

1,&a,2,&a 3 & a 4,&a 1,&a 2 & a 3,&a4,&a 1,&a,2,&a 3 & a 4,&a 1,&a 2,&a 3,&a 4,&a

22

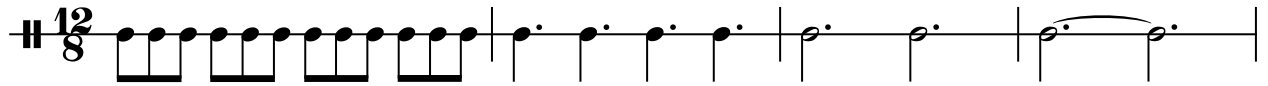
1 & a 2,&a 3 & a 4,&a 1 & a 2 & a 3,&a4 &a 1,&a 2 & a 3 & a 4 & a

25

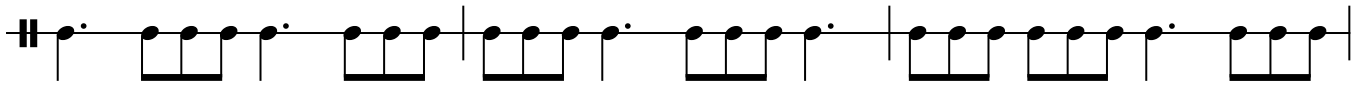
1 & a 2 &a 3,&a 4,&a 1,&a 2,&a 3,&a 4,&a 1,&a,2,&a 3,&a,4,&a 1 & a 2 & a 3 & a 4 & a

Introducing 12 / 8 Time

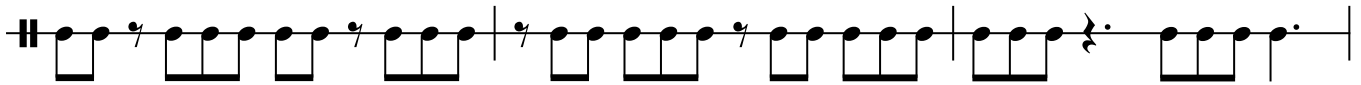
Worksheet 4.8



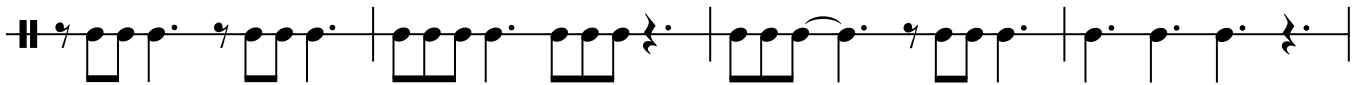
5



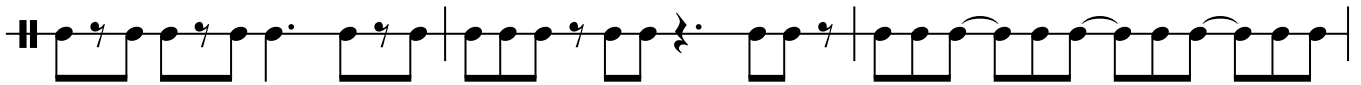
8



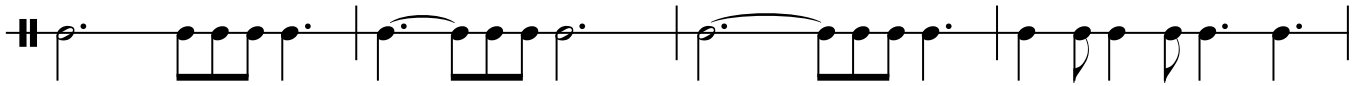
11



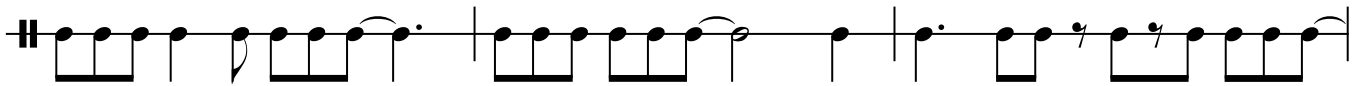
15



18



22



25

