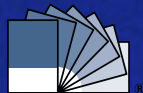


PANTONE®



What color is your world?



PANTONE®
293

®



PANTONE® the color authority.



Whatever your color may be, recent innovations have made reproducing that color accurately, in any medium, anywhere in the world, an affordable reality. I am proud to be able to offer our customers the most advanced, efficient and complete color solutions available today. Our newest color devices offer a practical means of streamlining the color workflow around the world. PANTONE Color Cue™ will make your color inspiration easier. The PANTONE COLORVISION™ products will make your color vision accurate. Rely on Pantone to make accurate color easily accessible and affordable.

From print and digital color reproduction to product development for fashion and interiors, Pantone continues to offer total color solutions for all industries. Because of our forty years of experience, proven color expertise and technical know-how, Pantone has earned the reputation as the world's color authority.

Richard Herbert
Richard Herbert
 President, Pantone, Inc.

Printed in PANTONE Hexachrome®, this catalog illustrates both the dynamic color range and value derived from the process. The PANTONE Colors shown below were chosen to illustrate the accuracy of solid color reproduction using the six-color Hexachrome® process. The value? Besides great color, savings were achieved by printing the catalog in the six Hexachrome colors (CMYKOG). To learn more about printing in Hexachrome, see pages 16 and 17.



color for textiles

2

color for plastics

4

solid color

6

special effects

8

calibration

10

digital color

12

equipment

13

four-color

14

hexachrome

16

PANTONE color
 psychology books

18

value bundles

19-21



capture your color inspiration... anywhere

"I love this magical little machine! I saw a picture in a magazine that was the perfect color for a product display I was working on. I sampled it using Color Cue and voilà! I even put it on my dog and got the right color for another project. It's the graphics advantage that any product development manager needs to get ahead."

Spencer Krenke, principal
 Truescents LLC, Seattle, WA

**fast and useful
 color data with a
 click of a button?**

Where else could you get PANTONE Color ink formulas, CMYK, sRGB, HTML, Lab and Hexachrome values in a single device that fits in the palm of your hand? Using the PANTONE Color Cue, you will be able to swiftly identify the closest PANTONE Color for any item that you point and click to, providing an invaluable tool to enhance your color work flow.

PANTONE Color Cue GEBAT100 \$349.00



PANTONE HAS THE ANSWERS

Our friendly Customer Service Representatives are available between 8:00 a.m. and 6:00 p.m., Eastern Standard Time, Monday through Friday, to answer your questions.

Call 888-PANTONE (888-726-8663).





for inspiration in color and trend

PANTONE View Colour Planner – (twice annually)

Access seasonal color inspiration using the PANTONE TEXTILE Color System

One-year subscription (Fall/Winter 2003/04, Spring/Summer 2004) 2019-F03/S04 **\$1,400.00**

Individual Season (Fall/Winter 2003/04 or Spring/Summer 2004) 2019-F03 or 2019-S04 **\$750.00**

now with 175 more colors the ultimate product development tool

Color Swatch Files – Cotton

Three-volume set containing over 1,900 colors in 2" x 2" removable cotton swatches. TFC105 **\$3,600.00**

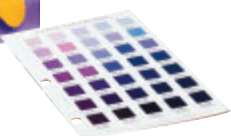
Color Swatch Card – Cotton

Individual 4" x 4" cotton swatch card provides the most accurate way to communicate and specify color choices to clients and manufacturers. SWCD **\$5.50**



color at-a-glance

Color Selector – Cotton Take the guesswork out of where to find that special shade. Compact fabric chip reference of over 1,900 colors belonging to the PANTONE TEXTILE Color System in one convenient binder. TFC104 **\$695.00**



design online and offline

Color Chooser 2.0 and Guide CD-ROM enabling the integration of the PANTONE TEXTILE Color System into existing design software packaged with the PANTONE TEXTILE Color Guide TPX102 **\$195.00**



color coordination

Spyder™ Textile Suite PRO Customized for the textile system, this Suite includes: Spyder Colorimeter, OptiCAL™ Software, ProfilerPLUS™ Software, PANTONE TEXTILE Color Chooser 2.0 and Guide. See page 11 for more information. TPUSB100 **\$597.00**

visit www.pantone.com



introducing
175 more colors

Color - The essential ingredient in creating today's products for the fashion, accessories and home furnishings market. As a designer, merchandiser or product development manager, you know how important color is to your business. **Containing over 1,900 colors and available in paper, cotton and digital formats, the PANTONE TEXTILE Color System, the global standard for color communication, provides a precise way for you to select, specify, control and communicate your color choices.**



"Insisting that all our vendors use the PANTONE TEXTILE Color System has eliminated costly mistakes that occurred in the past when fabrics had to be thrown out because they didn't meet our demanding color selection and color consistency standards."

Kate Cordsen, president
Kate Cordsen Textiles, New York, NY

specify color with ease

Color Specifier and Guide – Paper Two-volume specifier set containing easy tear-out chips of each color packaged with companion PANTONE TEXTILE Color Guide. TPP102 **\$450.00**

Color Specifier only TBP103 **\$350.00**

Color Guide – Paper Color-on-paper fan deck designed for portable use. Ideal for sample shopping, client or vendor meetings and on-site reviews. TGP102 **\$150.00**

Replacement Pages – Paper Individual pages for the PANTONE TEXTILE Color Specifier containing seven PANTONE Colors with five tear-out chips. TPRP **\$4.75**



call 888 PANTONE (726 8663)



plastic color matching Take the guesswork out of plastic color matching. Do away with paper samples, fabric swatches and paint chips. **Now you can save time and money using a comprehensive color system built specifically for plastics and supported by an international network of licensed colorant suppliers and masterbatchers.** This System offers an easy and accurate method for color communication between designers and plastics manufacturers. The complete set contains a full palette of 735 transparent colors and 1,005 opaque colors (including over 900 cross-references to the PANTONE MATCHING SYSTEM® and PANTONE TEXTILE Color System). Each color chip provides three steps of thickness to display different levels of translucency. Chips are conveniently arranged and stored in custom three-ring binders. All chips have a gloss finish - opaque chips also include a matte finish.

PANTONE PLASTICS

opaque and transparent selector (1,740 colors, 5 binders)

opaque selector (1,005 colors, 3 binders)

transparent selector (735 colors, 2 binders)

Individual reference chips are available to replace frequently used colors or to build your own custom palettes. (Please call to order.)

Individual selector chips

PPTQ100 **\$3,295.00**

PBQ100 **\$1,995.00**

PBT100 **\$1,475.00**

LCQ/LCT **\$2.95**



PANTONE HAS THE ANSWERS

Our friendly Customer Service Representatives are available between 8:00 a.m. and 6:00 p.m., Eastern Standard Time, Monday through Friday, to answer your questions.

Call 888-PANTONE (888-726-8663).

“In the past, we had to hire model makers to mix translucent colors which took time and was expensive. Now we simply send a chip to our suppliers or, if they have the System, just call them up with the color number. **Obtaining the right color is now faster, less expensive and as easy as calling in a PANTONE Color number to our suppliers.**”

Harry Hessen, design director
Sharp Manufacturing Company of America
Memphis, TN





solid color specification A color chip says a thousand words. **Design and print professionals know the importance of articulating color specifications accurately to achieve successful results.** This three-book set includes six perforated chips for each solid PANTONE MATCHING SYSTEM Color, making it easy to select, specify and communicate color on coated, uncoated or matte stock. Attach color reference chips to artwork and digital files to ensure that you get a perfect match every time.

PANTONE solid chips three-book set
(coated, uncoated, matte) 2010 **\$299.00**

PANTONE solid chips two-book set
(coated, uncoated) 2008 **\$249.00**

color formula guides Are you playing with a full deck? **If you're using an outdated or worn formula guide, you may not get the results for which you are looking. Keep your color reference tools updated to avoid costly mistakes.** These guides contain 1,114 solid PANTONE MATCHING SYSTEM Colors with ink formulations on coated, uncoated and matte stock.

PANTONE formula guides designer edition
(coated, uncoated, matte) 2006 **\$119.00**

PANTONE formula guide printer edition
(coated/uncoated) 2007 **\$82.00**



PANTONE HAS THE ANSWERS

Our friendly Customer Service Representatives are available between 8:00 a.m. and 6:00 p.m., Eastern Standard Time, Monday through Friday, to answer your questions.

Call 888-PANTONE (888-726-8663).



ultimate kit/supreme value

This kit is definitely the ultimate in every way. You get six essential color reference tools in one convenient value package. Select PANTONE MATCHING SYSTEM Colors from coated, uncoated and matte stock. Choose process colors from the coated and uncoated guides. And understand how solid colors will print when specified in CMYK using the PANTONE solid to process guide. All six guides come neatly packaged in a designer storage case for convenience and protection.

PANTONE ultimate survival kit 2013 \$299.00

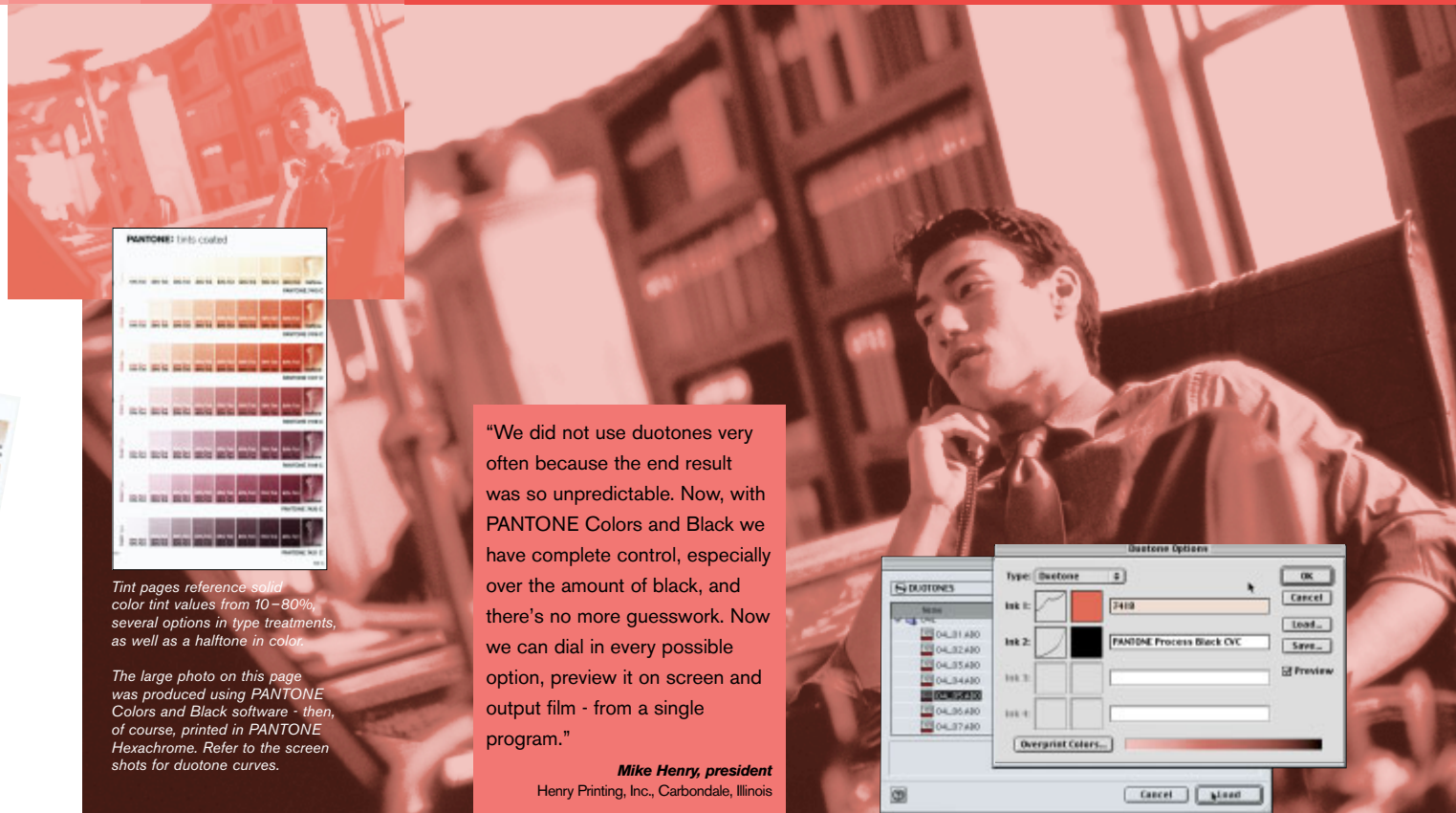
(Five-guide EURO version also available. Call for pricing and information.)



infallible tints

Use **PANTONE tints** as a reference for applying tints and tint effects with confidence. A two-volume set on coated and uncoated stock, each book contains 1,113 solid PANTONE Colors printed as tints from 10-80%, a halftone image, the color as type, black type effect, reverse type and color type surprint. A must for every designer and creative agency.

PANTONE tints 2029 \$269.00

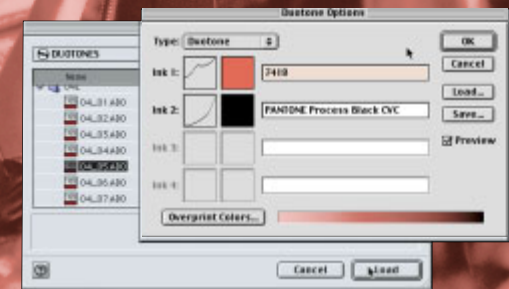


Tint pages reference solid color tint values from 10-80%, several options in type treatments, as well as a halftone in color.

The large photo on this page was produced using PANTONE Colors and Black software - then, of course, printed in PANTONE Hexachrome. Refer to the screen shots for duotone curves.

"We did not use duotones very often because the end result was so unpredictable. Now, with PANTONE Colors and Black we have complete control, especially over the amount of black, and there's no more guesswork. Now we can dial in every possible option, preview it on screen and output film - from a single program."

Mike Henry, president
Henry Printing, Inc., Carbondale, Illinois



Choose a duotone effect from the Guide, click "Load..." to select the curve, then "OK" to apply it to your image.

metallics

Use PANTONE Metallic Colors to add a new dimension to your designs. **The brilliance and visual appeal of metallics can be used to provide decorative effects on labels, ads and brochures or enhance the impact of packaging to improve the overall value perception of a product.** This Guide includes a selection of 204 PANTONE Metallic Colors. Each color is printed on coated stock, with and without an overprint varnish. Two tear-out chips are provided per color to help you communicate color specifications with confidence.

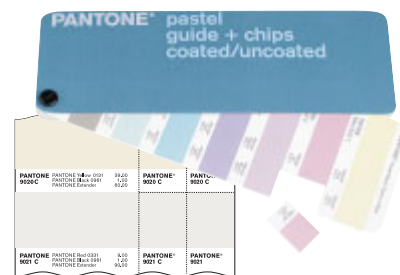
PANTONE metallic formula guide + chips coated 2016 \$59.00



pastels

When a soft, subtle look is required, turn to PANTONE Pastels. **This unique specialty publication offers a selection of 126 chromatically arranged pale colors with ink mixing formulas on coated and uncoated stock.** Each color reference includes two specification chips that can be attached to artwork and digital files to ensure accurate color communication between designers and printers.

PANTONE pastel formula guide + chips coated/uncoated 2028 \$49.00



doubt-free duotones

Never has duotone creation been so easy and accurate. With PANTONE Colors and Black, success is in hand.

The guides illustrate 12 printed effects for each of 50 PANTONE Colors on coated and uncoated stock. The five-CD set provides access to 11,000 Adobe® Photoshop® duotone curves for over 900 PANTONE Colors. Just select a curve and apply it to your image. Product for Windows® and Mac. Requires Adobe Photoshop. **PANTONE Colors and Black Studio Edition 9806-SE5 \$199.00**



film and foil stamping

Essential guides for packaging designers. Visualize how colors in liquid inks appear when printed on film or foil.

Each guide contains 109 PANTONE Colors printed with and without a white underprint.

PANTONE film guide 9106 \$70.00

PANTONE foil guide 9107 \$70.00

Choose from over 100 colors on coated and uncoated stock that achieve the visual effect of hot stamped foil.

PANTONE foil stamping guide 9510 \$21.95



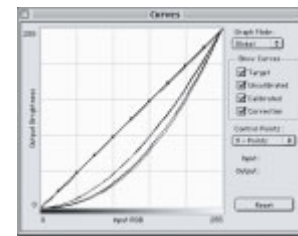


Agonizing over your colors not matching? With the Spyder product line, you can quickly and easily calibrate your monitor to ensure the color you see on your screen matches the color you see on your print every time. Now you can confidently meet with your clients knowing your colors are accurate. Pantone has affordable solutions to make color and you look good.

Spyder Photo Suite PRO Tired of time consuming, trial and error monitor-to-printer color proofs? The Spyder Photo Suite PRO bundle calibrates and profiles your monitor with the highly acclaimed Spyder with OptiCAL. It also includes ProfilerPLUS™ software for creating printer profiles using your desktop scanner. **For a fraction of the price of other photo professional calibration systems, you can now calibrate your monitors and printers and match the color you see on your CRT or LCD display with what you see in print every time!** A must-have package for designers, photographers, printers and pre-press people. **Spyder Photo Suite PRO** GPUSB109 **\$499.00**

Spyder Photo Suite Calibrates and profiles your monitor and printer but replaces OptiCAL with PhotoCAL™ for a less sophisticated alternative version for novice users. **Spyder Photo Suite** GPUSB108 **\$414.00**

All Spyder suites include: Spyder Colorimeter, OptiCAL or PhotoCAL software.



Spyder with OptiCAL To ensure your monitor is displaying the most accurate colors in the widest range possible, you can calibrate and create a high quality ICC profile with the acclaimed Spyder with OptiCAL. This is especially valuable when relying on your monitor to make color decisions or using it to preview designs as you create them. Includes advanced color control tools to deliver precise and repeatable results. **Spyder with OptiCAL** GEUSB103 **\$388.00**

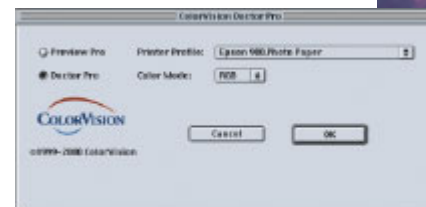
Spyder with PhotoCAL Calibrate your monitor and create an ICC profile with a less sophisticated and alternative version for novice users. **Spyder with PhotoCAL** GEUSB102 **\$288.00**



the ultimate software for advanced professionals

Working as an Adobe Photoshop plug-in, the software creates professional spectro and scanner-based profiles for inkjet printers, laser printers, PostScript® printers and RIPs. It also includes DoctorPRO™ to edit the profiles that you just created using the Adobe Photoshop precise toolset. **ProfilerPRO™** GSX104 **\$749.00**

the high-end solution The high-end solution to select, specify and control color choices across different media. Spyder Master Suite calibrates your monitor with Spyder with OptiCAL and profiles your printer with ProfilerPRO software, a professional duo that makes color management an affordable reality. **Spyder Master Suite** GPUSB114 **\$966.00**



Turn your familiar Adobe Photoshop toolset into a powerful profile editor!

Minimum System Requirements: Mac OS 9x, OS X; Windows 98, ME, 2000, XP; USB; Adobe Photoshop 5.02 or greater (for both RGB and CMYK profiles) or Adobe Photoshop Elements (for RGB profiles only); color printer/PostScript printer or RIP; Flatbed reflective scanner, 300 dpi or better for scanner-based profiling, or supported spectrophotometer for spectro-based profiling.



accurate RGB color matching

Achieve the best possible representation of PANTONE Colors on a monitor with the PANTONE solid in RGB guide.

Displays the 1,114 solid PANTONE Colors with their RGB and HTML values. Use to match printed colors in Web designs, presentations and more. Icons indicate colors achievable in RGB, CMYK or Hexachrome.

PANTONE solid in RGB guide GP1100 **\$109.00**



PANTONE colors for web design

PANTONE ColorWeb® Pro 2.0 includes over 1,100 colors optimized for the Web. Easily select and apply PANTONE Colors within your favorite Web-authoring and design software.

Product for Windows and for Mac OS X.

Need it fast? Now available as a download from www.pantone.com.

Minimum System Requirements: 256-color display, Windows 95/98/2000/XP or Mac OS X.

PANTONE ColorWeb Pro 2.0 WSX100 **\$39.95**



buy both and save

These complementary products are also available as a value package. PANTONE solid in RGB guide and ColorWeb Pro 2.0

WPX100 **\$129.95**

Enter a PANTONE Number or scroll the palette to locate and select a color.



calibrate your monitor for accurate web color

If you work on Web pages, computer presentations and more, calibrate your monitor with the highly acclaimed Spyder with OptiCAL. To specify color, use PANTONE ColorWeb Pro 2.0 and PANTONE solid in RGB guide. See page 11 for more information about the Spyder with OptiCAL.

Spyder Web Suite PRO
GPUSB111 **\$456.00**

If your office has several computers and you want to calibrate them all for accurate and consistent color, call 888-PANTONE and ask for Pantone special pricing.



color by PANTONE Number...

Using Microsoft® Office PANTONE OfficeColor Assistant™ 2.0 adds the color and visual impact of PANTONE Colors to your Microsoft Office Suite. Easily select industry-standard PANTONE Colors in Word, Excel, PowerPoint® or FrontPage®. Product for Windows only. Requires Microsoft Office version 97, 2000 or XP. Available as a download from www.pantone.com.

PANTONE OfficeColor Assistant 2.0 GSW100 **\$39.95**

visit www.pantone.com



"PANTONE Color Viewing Lights make it possible to formulate printing inks so they will deliver the right color in the light in which they are intended to be used. Many of our customers use our inks to create point-of-purchase displays for retail stores or supermarkets. With the PANTONE Color Viewing Lights, both customers and our own staff know exactly what the ink will look like in the actual setting."

Duke Van Dorsdale,
East Coast implant manager
Inx International

view your color in correct light

Make your critical color choices under the proper lighting conditions with PANTONE Color Viewing Lights. Available in two configurations, our three-light model offers simulated daylight, fluorescent (store) or incandescent (home) lighting, while our five-light model simulates two daylight sources, fluorescent (store), incandescent (home) and ultraviolet lighting conditions.

PANTONE Color Viewing Lights

- Three-light model (110v/60 Hz) PVL-310 **\$855.00**
- Five-light model (110v/60 Hz) PVL-511 **\$1,395.00**
- Five-light model (220v/50 Hz) PVL-522 **\$1,395.00**

mix only the inks you need

Save time, money and eliminate waste with PANTONE Formula Scales. These scales calculate the precise weights of the basic color inks for each PANTONE Formula based on the quantity desired. Available in 2-lb, 20-lb and 50-lb capacities.

- PANTONE Formula Scale LC** (up to 2 lbs) PFS2-12L **\$1,995.00**
- PANTONE Formula Scale 3** (up to 20 lbs) PFS3-12 **\$2,995.00**
- PANTONE Formula Scale 3** (up to 50 lbs) PFS3-12HD **\$3,830.00**

Please confirm electrical requirements and units of measure when ordering.

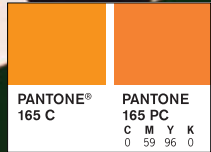


call 888 PANTONE (726 8663)



"We use the PANTONE solid to process guide to as closely as possible match spot colors on the offset press to four-color process on the digital press. Due to tight turnaround times, we often run jobs on both digital and offset presses. When I'm designing a piece that will be printed digitally, I refer directly to the PANTONE solid to process guide whenever I choose a PANTONE Color. This is to make sure the color will be what I'm expecting when it's converted to CMYK."

Sabrina Petoletti, graphic designer
Watchdog Print Media, Cypress, CA



maximize your process dollar

Achieve the look of solid color in four-color process printing. With over 3,000 process combinations printed on coated and uncoated stock, you'll never be at a loss for that optimal color. Displayed in chromatic order in fan-guide format, it's easy to select colors and specify CMYK screen values using this two-guide set.

PANTONE process guides
coated and uncoated, two-guide set 9914 **\$149.00**
European Edition 2018 Call for pricing.

specify process colors

Our two-book set of process chips with over 3,000 colors on coated stock leaves no room for error when communicating process color expectations to clients and printers. Simply attach a chip to the artwork, digital file or specifications. Four chips per color are supplied along with screen tint percentages for accurate reproduction.

PANTONE process chips coated 9915 **\$249.00**

solid color conversion to CMYK

Which PANTONE MATCHING SYSTEM Colors can be reproduced in CMYK? The indispensable solid to process guide tells all. **This money-saving guide provides a printed comparison of 1,089 solid PANTONE Colors side-by-side with their closest four-color process match on coated stock.** CMYK screen tint percentages are listed under each color.

PANTONE solid to process guide coated 2001 **\$119.00**
European Edition GGE100 Call for pricing.

let chips do the talking

Don't leave anything to chance. **Use solid to process chips to show clients the end result before printing.** Handy binder contains three tear-out chips each of 1,089 solid PANTONE Colors alongside their closest four-color process match.

PANTONE solid to process chips coated 2002 **\$249.00**
European Edition GBE100 Call for pricing.



PANTONE HAS THE ANSWERS
Our friendly Customer Service Representatives are available between 8:00 a.m. and 6:00 p.m., Eastern Standard Time, Monday through Friday, to answer your questions.
Call 888-PANTONE (888-726-8663).



ready the moment you are Whether venturing into the exciting world of colorful Hexachrome for the first time or keeping pace with the latest software technology, PANTONE HexWare® is ahead of you with release 2.5. **Now with support for Adobe Illustrator® 10, Adobe Photoshop 7, Mac OS X and Windows XP, the software plug-in toolset includes:**

HexImage® 2.5 The color correction and separation plug-in for Adobe Photoshop that converts images into six-color Hexachrome separated files. Features robust color correction and soft proofing capabilities, along with a selection of ICC-compatible Hexachrome output device profiles.

HexVector® 2.5 for Adobe Illustrator, converts vector graphics and line art to Hexachrome. Apply colors from specially developed color swatch libraries optimized for Hexachrome or create your own Hexachrome custom colors. Save palettes for future use. Output files directly from Adobe Illustrator or save as an EPS.

Languages: English, German, Japanese.

Minimum System Requirements: Adobe Photoshop 6 or later, Adobe Illustrator 9 or later, 96 MB of RAM, 50 MB hard disk space. Windows 98/ME/2000/XP or Mac OS 9/OS X.

PANTONE HexWare 2.5 GSX110 **\$829.00**
Upgrades available. Call for pricing.



color selection simplified

Choose from the over 2,000 Hexachrome colors supplied in the hexachrome two-guide set. Each color is identified by a unique PANTONE Number and displays its CMYKOG screen tint percentages.

PANTONE hexachrome guides two-guide set (coated, uncoated) GPX100 **\$99.00**

match solid colors

The solid in hexachrome guide shows how you can simulate almost 90% of PANTONE MATCHING SYSTEM Colors in six-color process. Provides screen tint percentages for 1,091 solid PANTONE Colors printed in the Hexachrome process on coated stock.

PANTONE solid in hexachrome guide coated GGH100 **\$99.00**



a package deal

The PANTONE ColorSuite® for Hexachrome provides the separation software and color reference guides essential to working in the large gamut, six-color Hexachrome process. Comes with:

- PANTONE HexWare 2.5**
- PANTONE hexachrome guides two-guide set**
- PANTONE solid in hexachrome guide coated plus, PANTONE solid to process guide coated**

Minimum System Requirements: See HexWare 2.5 on page 16. Product for Windows and for Mac.

PANTONE ColorSuite for Hexachrome 2.5 GPX106 **\$979.00**

European Edition GPX107 Call for pricing.



Enthralled by the ability of Hexachrome to reproduce his creative genius, world renowned artist Andre Miripolsky printed the 25-year retrospective catalog of his works using the six-color process. ***"I'm overwhelmed by the Hexachrome color process representing my work. It's out of this world and I couldn't be happier with the results. It's truly, truly spectacular."***

Andre Miripolsky
artist and provocateur

PANTONE HAS THE ANSWERS

Our friendly Customer Service Representatives are available between 8:00 a.m. and 6:00 p.m., Eastern Standard Time, Monday through Friday, to answer your questions.

Call 888-PANTONE (888-726-8663).



make effective color choices

With this useful guide, you'll find everything you need to make color work in your designs - from valuable color terms to a chart for converting PANTONE Spot Colors to Hexachrome and process formats. **Created especially for anyone interested in the psychology of color and meaningful color combinations, this book will give you the essential guidelines and illustrations for all your projects - branding, packaging, point-of-purchase, advertising, signage, logos, Web sites and more!**

PANTONE Guide to Communicating with Color DBR100 \$36.99

by Leatrice Eiseman

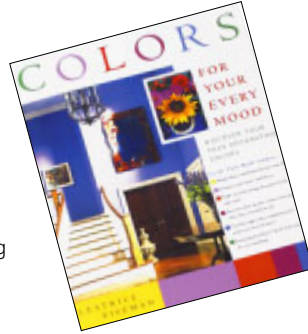


discover your own color preferences

and how to make them work for you from America's leading color expert. **Learn which color combinations can change a room from calm and soothing to dramatic and exciting, from rustic to romantic and from traditional to dynamic.** Complete with more than 150 color combinations, this how-to book offers practical information and fascinating psychological insights for everyone who makes color decisions.

Colors For Your Every Mood T9902-B \$20.00

by Leatrice Eiseman



Featured in *Entertainment Weekly* and *In Style* magazines, Pantone's new designer accessories line, called PANTONE Universe, is available directly from Pantone.

pantone universe

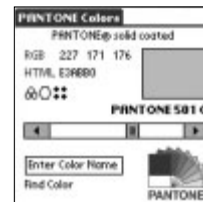
visit www.pantone.com



have your color... pastels and metallics, too!

the complete solid color collection

Perfect for designers who work with diverse color palettes, this bundle gives you the complete array of solid PANTONE Color choices at a great savings. Included in this collection are the most up-to-date PANTONE formula guides containing 1,114 colors on coated, uncoated and matte stock. In addition, you get the PANTONE metallic formula guide + chips with 204 brilliant colors, as well as the PANTONE pastel formula guide + chips containing 126 soft and subtle colors on coated and uncoated stock. **PANTONE solid color bundle** 2002-016 \$179.00 (SAVE \$48.00)



PANTONE Colors for Palm OS®

Get instant access to valuable information for solid PANTONE Colors. Quickly locate a color by its unique name or number to reveal its optimized RGB and HTML values.

PANTONE Colors Available only as a download from www.pantone.com \$7.50

Minimum System Requirements: Palm OS version 3.1 or above and a desktop computer with HotSync® software for installation.



PANTONE HAS THE ANSWERS

Our friendly Customer Service Representatives are available between 8:00 a.m. and 6:00 p.m., Eastern Standard Time, Monday through Friday, to answer your questions.

Call 888-PANTONE (888-726-8663).





PANTONE® 165 C	PANTONE 165 PC
	C M Y K
	0 59 96 0

End lengthy discussions. Visually show customers why so many solids reproduce poorly in four-color process.

PANTONE	% R 70 G 67 B 29
618 C	R 179 G 171 B 74
& O ::	HTML B3AB4A

Accurate RGB color data you need for working in today's digital environment.

dynamic duo

Save 20% on our two most popular guides for converting solid colors. Put an end to matching color by trial and error - get the data you need to convert PANTONE MATCHING SYSTEM Colors to CMYK, RGB or HTML.

While both fan guides display solid

PANTONE Colors on coated stock, the solid to process guide provides CMYK screen tint percentages and illustrates, in a side-by-side comparison, how the color will reproduce in four-color process printing. The indispensable solid in RGB guide furnishes RGB255, RGB100 and HTML values to enable the best possible representation of solid PANTONE Colors on monitor displays. **PANTONE solid to process guide, PANTONE solid in RGB guide** 2002-003 **\$182.00 (SAVE \$45.00)**



suite deal... Spyder Designer Suite

A must-have bundle for designers that want to reproduce and specify colors accurately. It includes the Spyder with OptiCAL, a monitor calibration and profiling system and PANTONE formula guides designer edition. This three-guide set provides the basic tools for accurate selection, specification and matching of over 1,114 solid PANTONE Colors. **Spyder Designer Suite** GPUSB112 **\$431.00 (SAVE \$76.00)**



PANTONE reference library

This complete color solution is favored by design professionals who require a broad range of color choices. It includes all of the essential PANTONE Guides and books, plus an attractive product showcase to conveniently store and display your color library. You'll receive:

Guide Unit:

- Three-guide set of PANTONE formula guides on coated, uncoated and matte stock
- PANTONE solid to process guide coated
- PANTONE process guide coated
- PANTONE solid in RGB guide coated
- PANTONE metallic formula guide + chips
- PANTONE pastel formula guide + chips

Chips and Tints Unit:

- Three-binder set of PANTONE solid chips on coated, uncoated and matte stock
- Two-binder set of PANTONE tints on coated and uncoated stock
- PANTONE solid to process chips coated
- PANTONE process chips coated (volumes 1 & 2)

PANTONE reference library 2001-62

\$995.00 (SAVE \$605.00)

PANTONE reference library EURO 2002-51

Call for product details and pricing.

instant color identification

Just place the Color Cue on any flat surface and, with the simple click of a button, you'll get the closest solid PANTONE Color match with its PANTONE Color ink formulas, CMYK, sRGB, HTML, Lab and Hexachrome values! Once you have a PANTONE Reference Number, you can use the PANTONE solid in RGB guide to gain a visual representation of the color. **PANTONE Color Cue and solid in RGB guide** GPBAT100 **\$399.00 (SAVE \$59.00)**



PANTONE® and other Pantone, Inc. trademarks are the property of Pantone, Inc. All other product names and trademarks are the property of their respective owners. Printed using PANTONE Hexachrome Color Technology. Pantone, Inc.'s six-color printing process is the subject of U.S. Patent No. 5,734,800. PANTONE Colors may not match PANTONE®-identified standards. Consult current PANTONE Color Publications for accurate color. Apple, ColorSync, Macintosh and Mac are trademarks of Apple Computer, Inc. Adobe, Illustrator, Photoshop and PostScript are either registered trademarks or trademarks of Adobe Systems Incorporated in the United States and/or other countries. Microsoft, Windows, Windows NT, PowerPoint and FrontPage are either registered trademarks or trademarks of Microsoft Corporation in the United States and/or other countries. HotSync and Palm OS are registered trademarks of Palm, Inc. COLORVISION™ and other ColorVision Inc. trademarks are the property of ColorVision Inc. Any omission of such marks from any product is regretted and is not intended as an infringement on such trademarks. © Pantone, Inc., 2002. Portions © ColorVision Inc.





the complete solid color collection

This top selling product bundle is favored by design professionals who require a broad range of color choices. You get the full palette of solid PANTONE Colors at a great savings.

For details, see page 19.

predict tint effects with certainty

PANTONE tints lets you view screen tints and tint effects before your job is printed! Expand your desktop design potential with instant previews that remove the guesswork. Two binder set provides actual printed samples of tints of PANTONE Colors from which to select and apply to your creative designs.

For details, see page 8.

Pantone, Inc.
590 Commerce Blvd.
Carlstadt, NJ 07072-3098

