

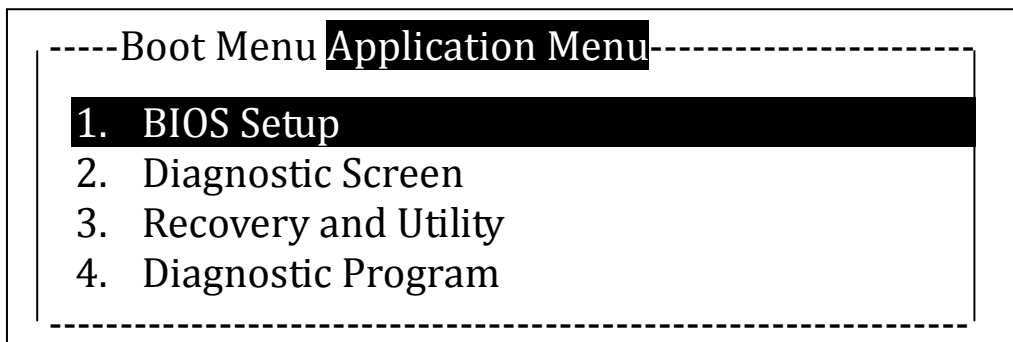
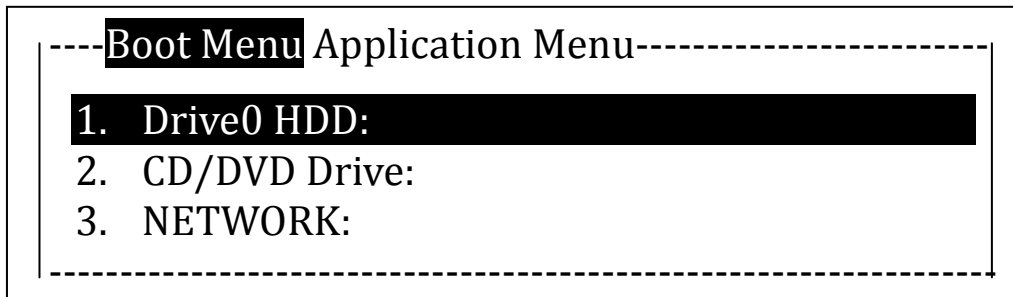


WINDOWS 8 DOWNGRADE TO WINDOWS 7 GUIDE

NOTE:

- Always backup your important data before performing the downgrade.
- Fujitsu may not provide any Recovery Media. User should create the Windows 8 Recovery Disk(s), and Bootable Disk(s) using **MyRecovery** utility.
- Before performing the Windows 8 downgrade to Windows 7, please remove any connected USB hard disk, flash drive or memory card.
- Please ensure the system is plugged to a power source before performing the Windows 8 downgrade to Windows 7.

1. Power up the system
2. Press F12* to access boot menu. * (F11 for some models)
3. Press **Tab** key to access Application Menu. Then select **<BIOS Setup>**.



(*Actual screen display varies between models.)

4. Select <Security> tab, temporarily set a Supervisor Password to initialize the <Secure Boot Configurations> Setting.

(You may ignore this step if supervisor password is already set.)

```

--- Info System Advanced Security Boot Exit ---
|
|   Supervisor Password Is:      Clear
|   Set User Password:          Clear
|   ▶ Set Supervisor Password   [Enter]
|   ▶ Set User Password         [Enter]
|   ▶ Password on Boot:        [Disabled]
|
|   ▶ Hard Disk Security
|   ▶ Secure Boot Configurations
|
-----
  
```

(*Actual screen display varies between models.)

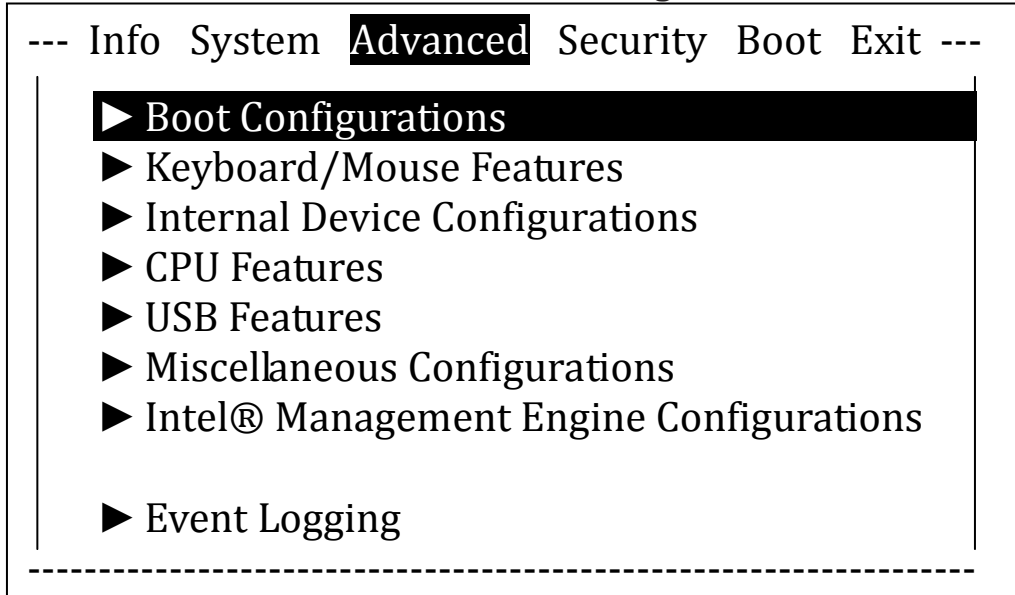
5. Under <Security> tab, access the <Secure Boot Configurations>. Set the <Secure Boot Option> to <Disable>.

```

----- Security -----
|
|   Secure Boot Configurations
|
|-----|
|   Secure Boot:                Disabled
|   Protected Signatures:       Disabled
|   Customized Signatures:      Disabled
|
|   Secure Boot Option:         [Disabled]
|
-----
  
```

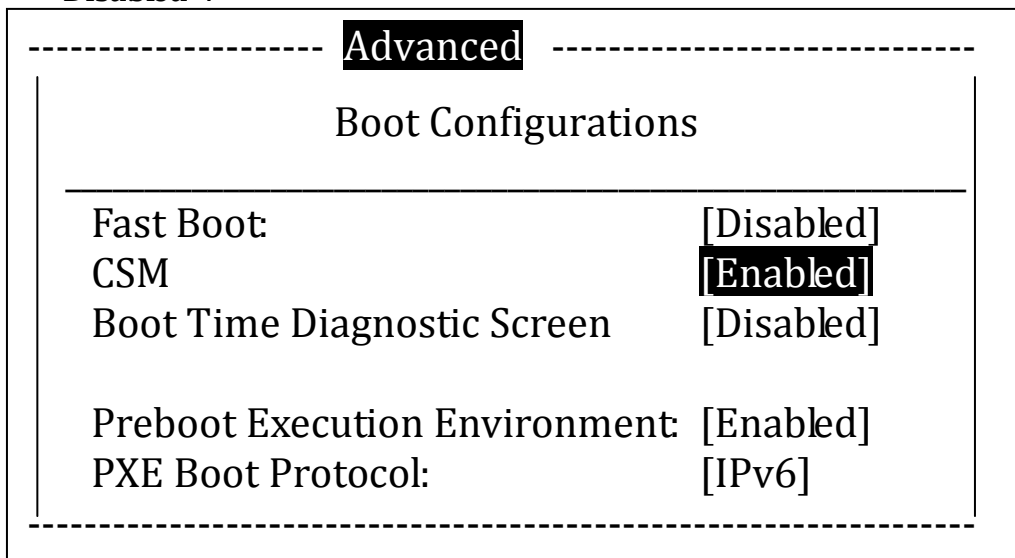
(*Actual screen display varies between models.)

6. Press <Esc> key to exit the <Secure Boot Configurations> menu. Select <Advanced> tab and access the <Boot Configurations>.



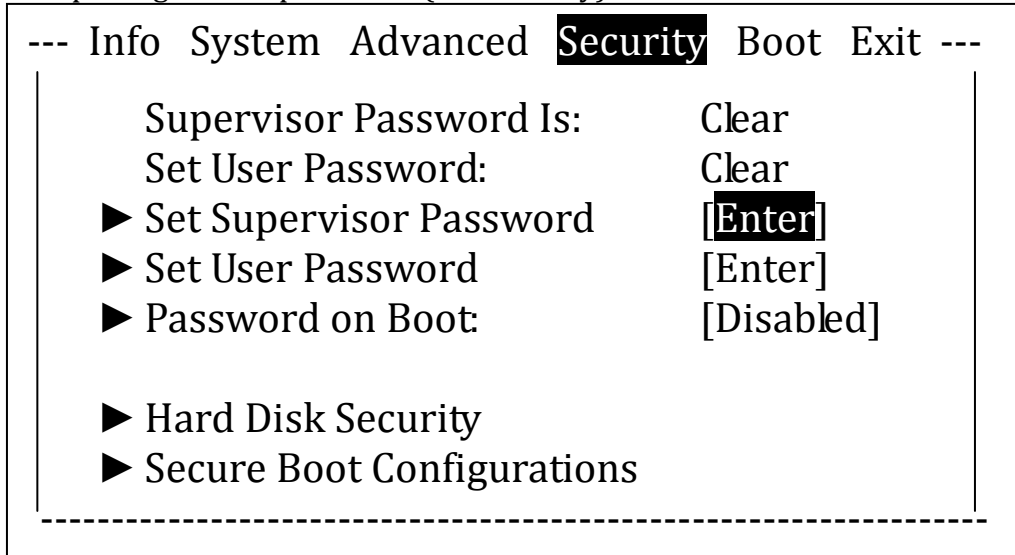
(*Actual screen display varies between models.)

7. Set the <CSM> option to <Enabled> and <Fast Boot> option to <Disabled>.

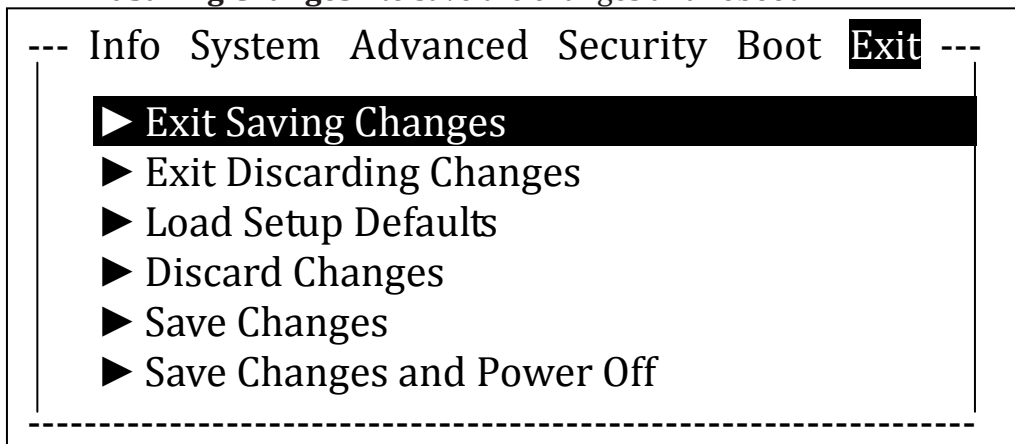


(*Actual screen display varies between models.)

8. Press <Esc> key to exit the <Boot Configurations> menu. Back to <Security> tab, erase the temporarily set Supervisor Password by inputting a blank password. (if necessary)

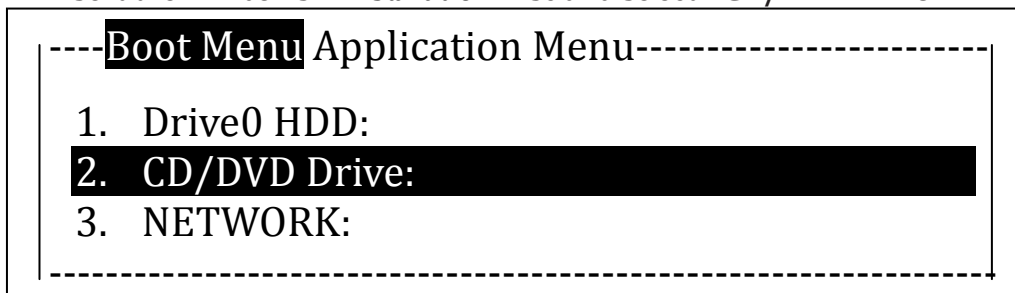


9. Press <Esc> key to exit the <Security> menu. Select <Exit> tab and choose <Exit Saving Changes> to save the changes and reboot.



(*Actual screen display varies between models.)

10. Access the boot menu again using the same method indicated in step (2). Insert the Windows 7 Installation Disc and select <CD/DVD Drive>.



(*Actual screen display varies between models.)

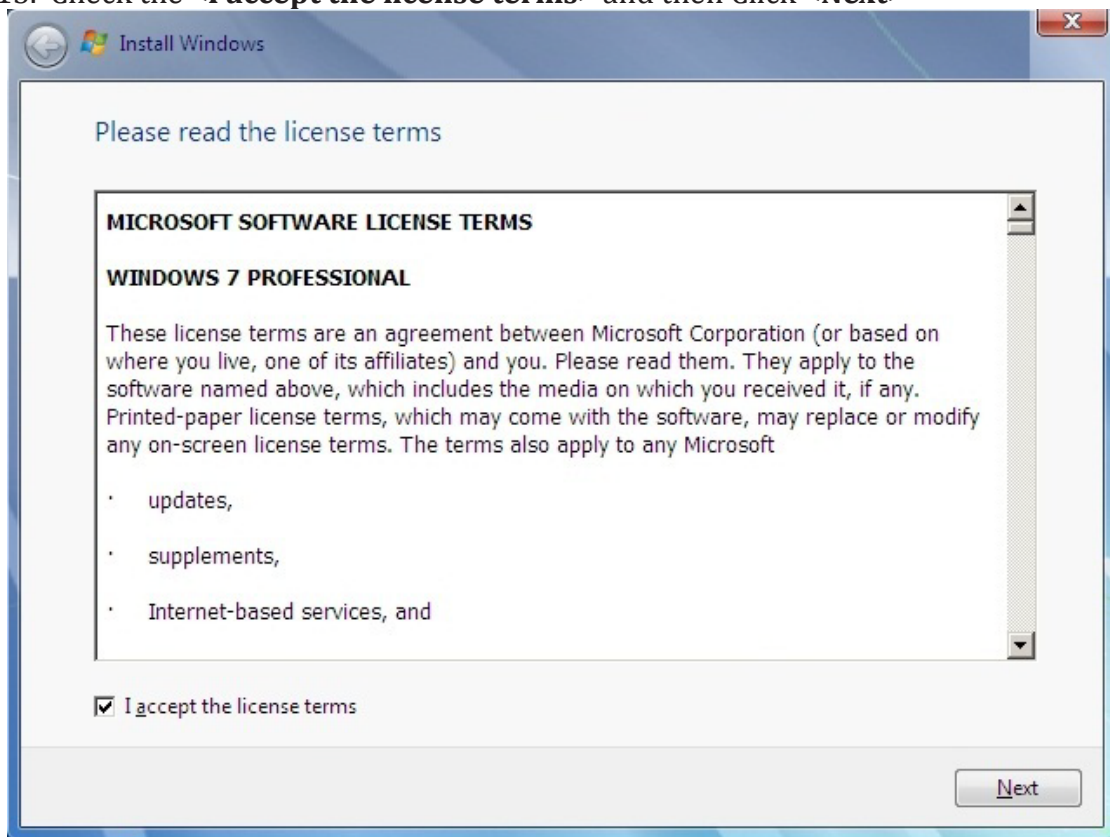
11. Enter the necessary information and click <Next>.



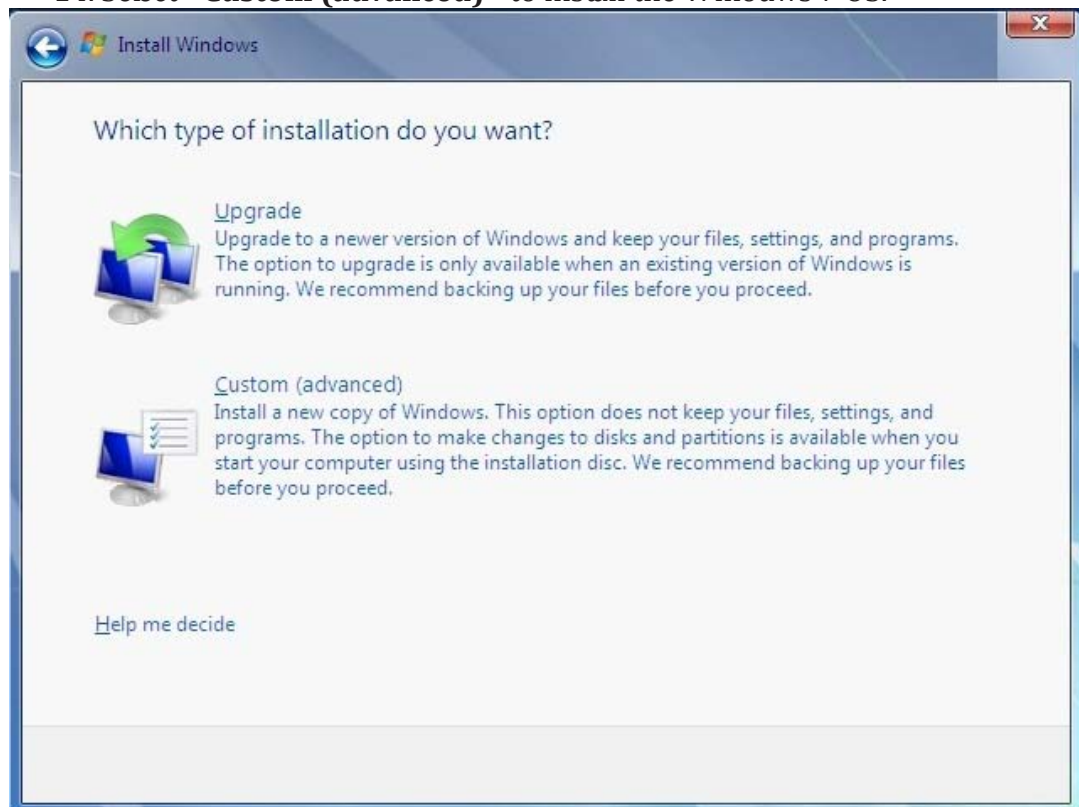
12. Click <Install now>



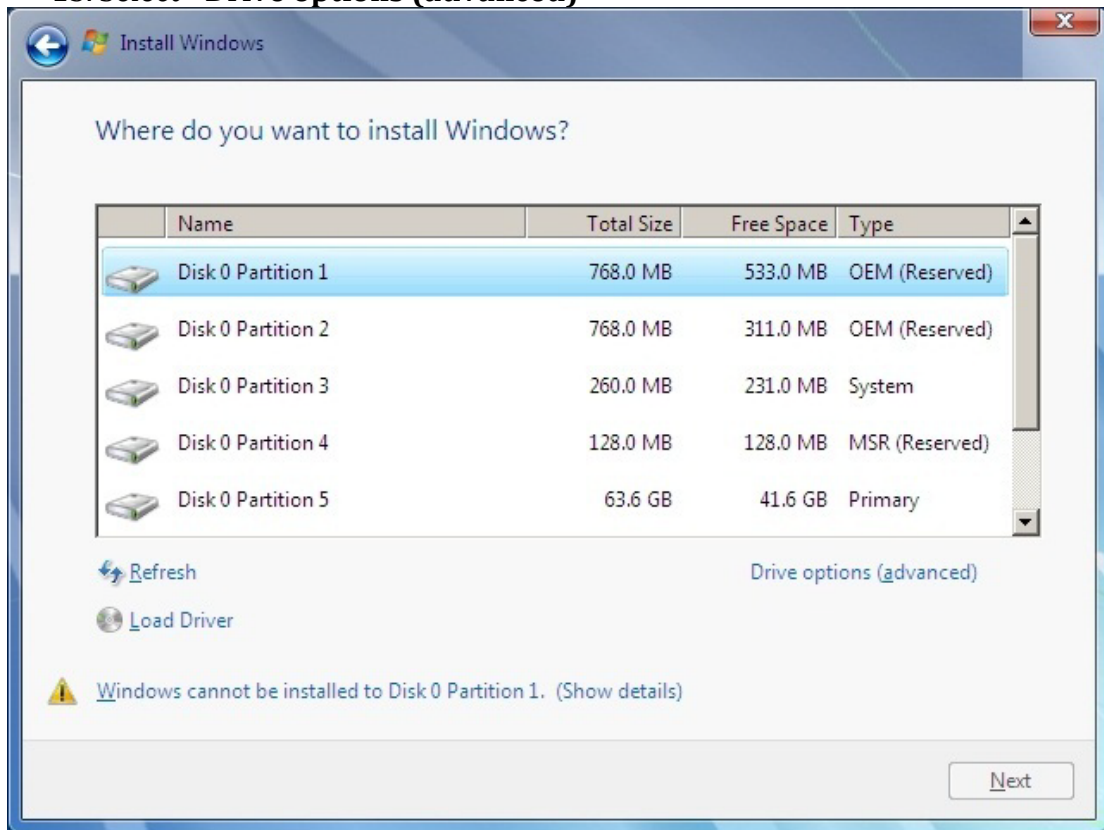
13. Check the <I accept the license terms> and then Click <Next>



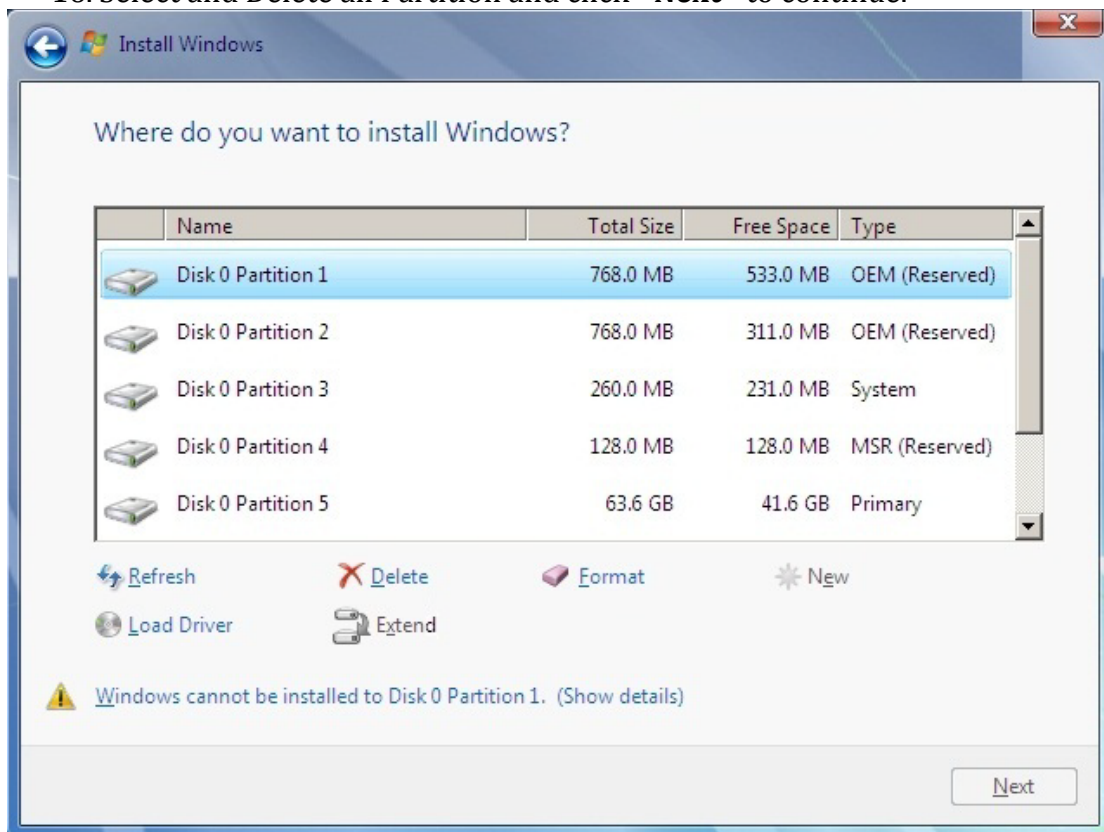
14. Select <Custom (advanced)> to install the Windows 7 OS.



15. Select <Drive options (advanced)>



16. Select and Delete all Partition and click <Next> to continue.



17. Follow the on-screen instruction and continue for the Installation.

