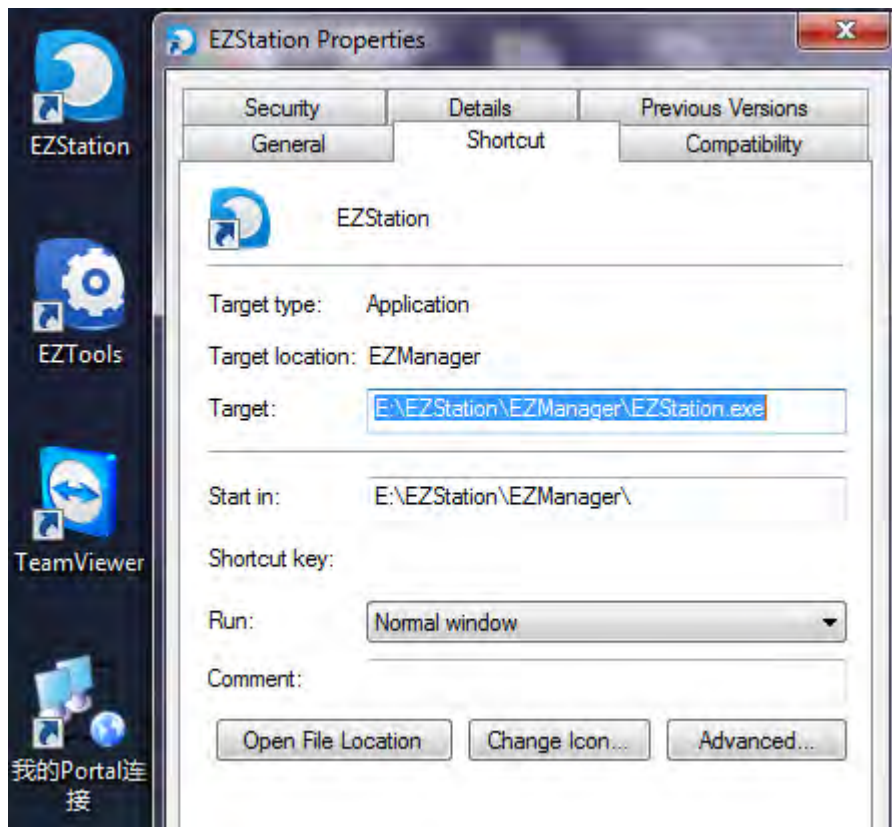


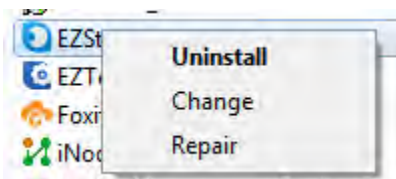
【EZStation】 How to recover the EZstation's password

Q: The default username and password for EZStation is admin/123456, but what do you do when you changed the password but forgot it?

A: Step1: copy EZStation installation directory, see picture below (default is C:\Program Files\EZStation



2. Uninstall it



3. Go to the installation path that you took note of in step 1, delete all the directories under EZstation

4. Reinstall the software and login with the default information