



Toyota TIS Subscription

NOTE: The process shown below reflects the procedure as of the posted revision date. If the site has changed, it is recommended to browse the manufacturers site for all available services, information and instructions.

The screenshot shows the Toyota TIS website interface. At the top, there are logos for Toyota, Scion, and Lexus. The main content area is divided into several sections:

- Subscriber Login:** Includes fields for User Name and Password, a "Remember Me" checkbox, and "Clear" and "Login" buttons. A link for "Forgot User Name or Password?" is also present.
- Need An Account?:** Features a "Subscribe" button and a note: "Access to TIS is available on a subscription basis. Click the Subscribe button above for more details."
- Already Have An Account?:** Features a "My Account" button and a note: "Choose a link above to manage your current TIS account."
- TIS Featured Information:** Includes a link for a tutorial and information about NASTF Vehicle Security Professional Registry.
- What Is TIS:** A text block explaining the system and a table summarizing features by subscription level.
- Professional Resources:** Promotes the Techstream Lite Kit, including links for learning more and finding dealerships.

TIS Library	Standard	Professional Diagnostic	Security Professional
Service Bulletins	■	■	■
Repair Manuals	■	■	■
Wiring Diagrams	■	■	■
Other Technical Information	■	■	■
Scan Tool / Reprogramming			
Techstream Software		■	■
ECU Calibrations		■	■
Security			
Key Codes			■
Immobilizer / Smart Reset			■

- Go to: <https://techinfo.toyota.com>
- **“Need An Account”:** First-time users, click on the “Subscribe” button and simply follow the next screens to create an account and subscribe to your first TIS subscription.
- **“Subscriber Login”:** Next time you need to access your TIS account, just sign-on using the “Subscriber Login” section.
- **“Already Have An Account?”:** This section will allow you to do the following. Just follow the applicable prompts:



Orig. Date: 12/12/99	Rev. Date: 8.18.10	Rev. Level: 001	Doc. # E1
----------------------	--------------------	-----------------	-----------



Toyota TIS Subscription

1. "Update My Personal Information"
2. "Change My Password"
3. "Extend My Subscription"
4. "View My Account History"

End of process



Orig. Date: 12/12/99	Rev. Date: 8.18.10	Rev. Level: 001	Doc. # E1
----------------------	--------------------	-----------------	-----------



Toyota Techstream and VIN Update Wizard (VUW) Installation

Note: This process defines the installation of Toyota Techstream software, which is needed in order to reprogram Toyota ECU. Flash reprogramming allows the ECU software to be updated without replacing the ECU. This process details the Techstream ECU flash reprogramming and outlines the use of the Technical Information System (TIS) and the Calibration Update Wizard (CUW).

Please refer to Toyota Techstream ECU Flash Reprogramming Procedure on their website.

- Log into Toyota TIS: <https://techinfo.toyota.com>

Subscriber Login

Remember Me

[Forgot User Name or Password?](#)

Need An Account?

Access to TIS is available on a subscription basis. Click the **Subscribe** button above for more details.

Already Have An Account?

Choose a link above to manage your current TIS account.

TIS Featured Information
[Click here](#) for a tutorial on our Technical Information System.
 Access to vehicle security information is provided for security professionals registered with the NASTF Vehicle Security Professional Registry. For more information [click here](#).

What Is TIS

The Technical Information System or TIS is your service support source for all Toyota produced vehicles marketed in North America. TIS includes all of the vital information you'll need to effectively service most **1990 and later** Toyota products.

TIS is available in three different levels. The table below summarizes the features of each subscription level.

TIS Library	Standard	Professional Diagnostic	Security Professional
Service Bulletins	■	■	■
Repair Manuals	■	■	■
Wiring Diagrams	■	■	■
Other Technical Information	■	■	■
Scan Tool / Reprogramming			
Techstream Software		■	■
ECU Calibrations		■	■
Security			

Professional Resources

Techstream Lite Kit
 Techstream Software & Mongoose MFC VIM + Your PC = techstream)))

Factory Service Information and Diagnostics for your shop!
 Need an inexpensive solution for diagnosing & repairing Toyota, Scion, and Lexus vehicles?
 The NEW Techstream Lite Kit allows you to use your own PC with Techstream Software.
[>>Learn More About Techstream Lite](#)
[>>Scantools & Vehicle Reprogramming](#)

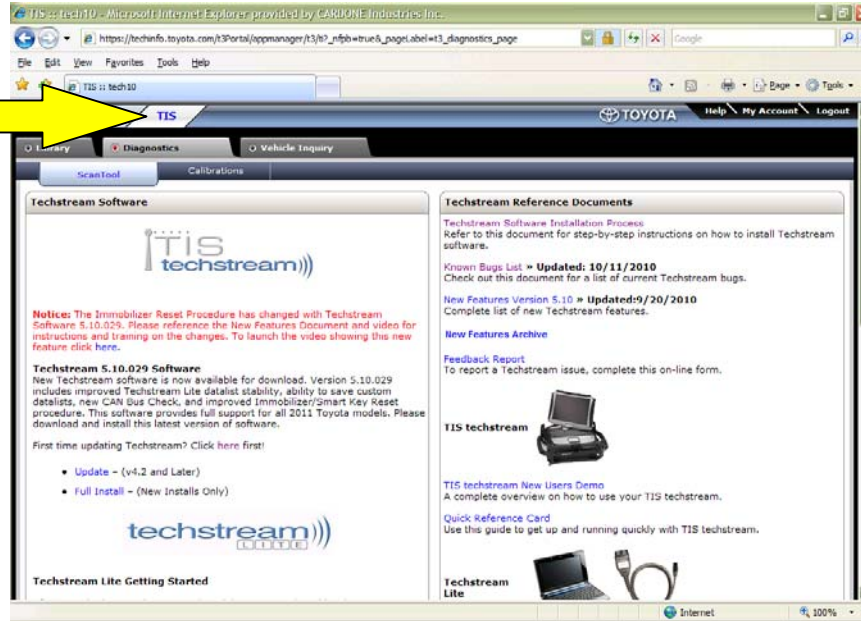
Find a Dealership near you for a full selection of Genuine Parts and Accessories.



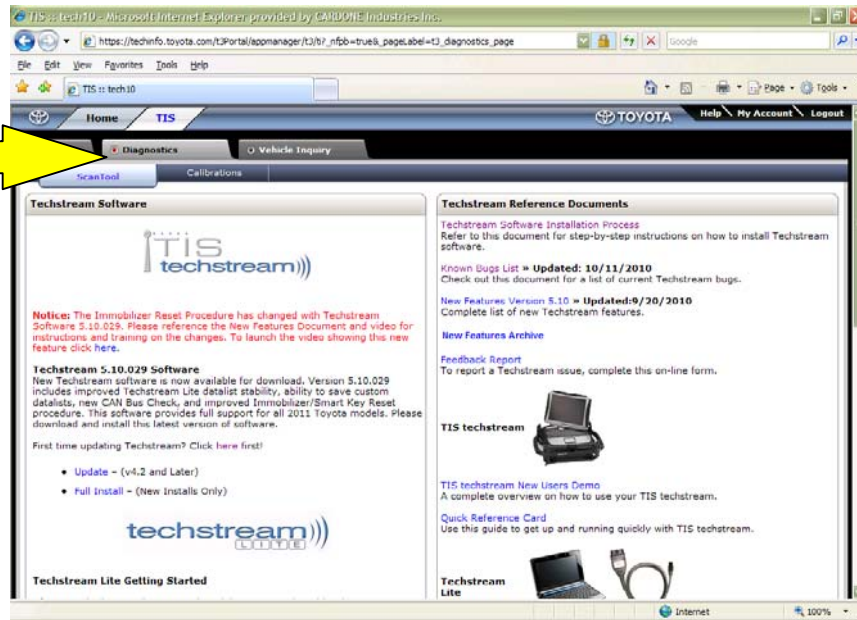
Orig. Date: 12/12/99	Rev. Date: 10/14/2010	Rev. Level: 002	Doc. # E2
----------------------	-----------------------	-----------------	-----------



Toyota Techstream and VIN Update Wizard (VUW) Installation



- Click on the TIS tab



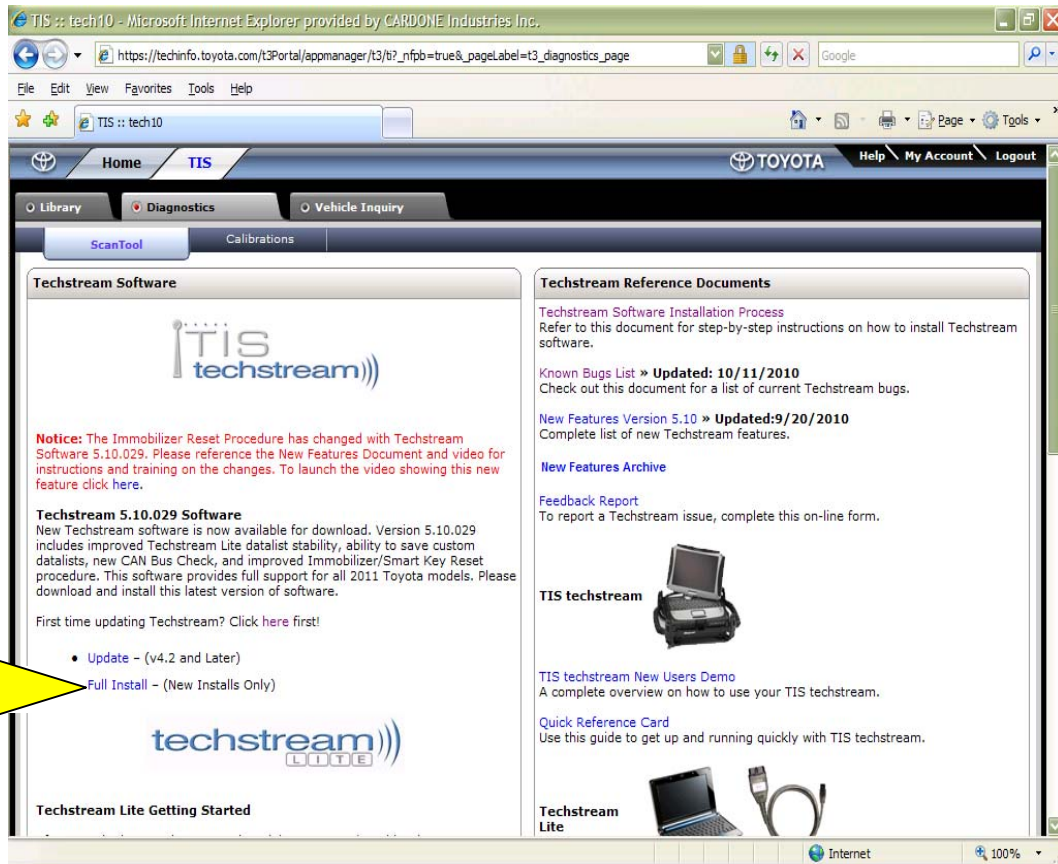
- Click on the DIAGNOSTICS tab



Orig. Date: 12/12/99	Rev. Date: 10/14/2010	Rev. Level: 002	Doc. # E2
----------------------	-----------------------	-----------------	-----------



Toyota Techstream and VIN Update Wizard (VUW) Installation



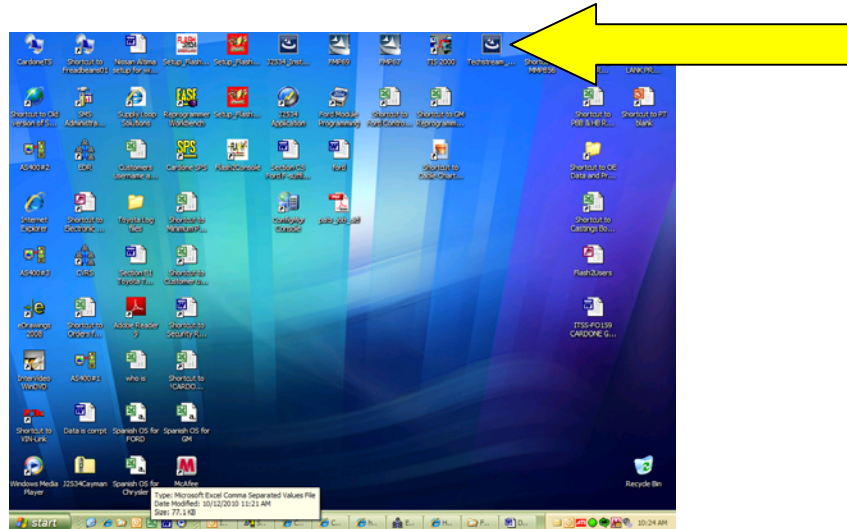
- First Time Users must Download the Full Install option and SAVE the file to your Desktop



Orig. Date: 12/12/99	Rev. Date: 10/14/2010	Rev. Level: 002	Doc. # E2
----------------------	-----------------------	-----------------	-----------



Toyota Techstream and VIN Update Wizard (VUW) Installation



- Locate the Techstream ICON on desktop double click



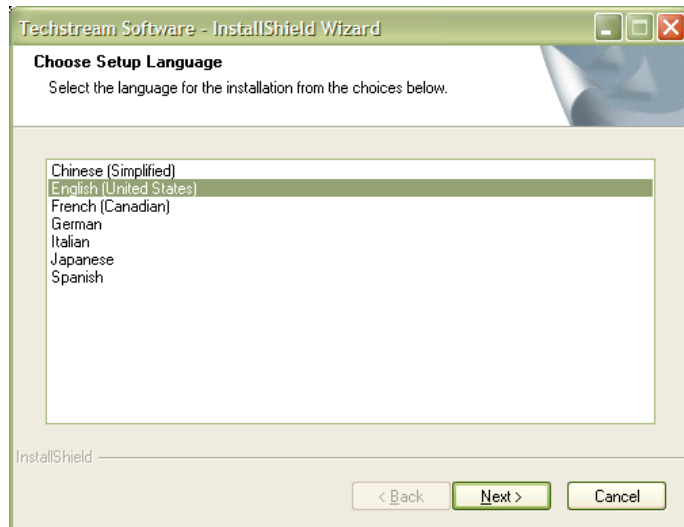
- Click RUN



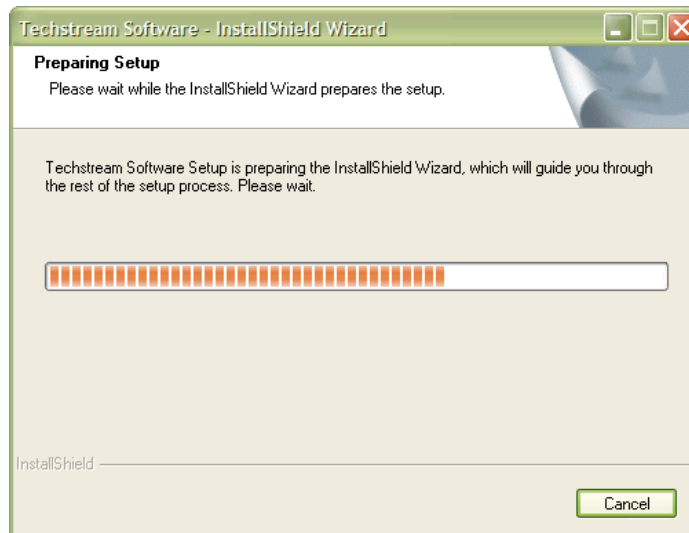
Orig. Date: 12/12/99	Rev. Date: 10/14/2010	Rev. Level: 002	Doc. # E2
----------------------	-----------------------	-----------------	-----------



Toyota Techstream and VIN Update Wizard (VUW) Installation



- Select desire Language and Click NEXT

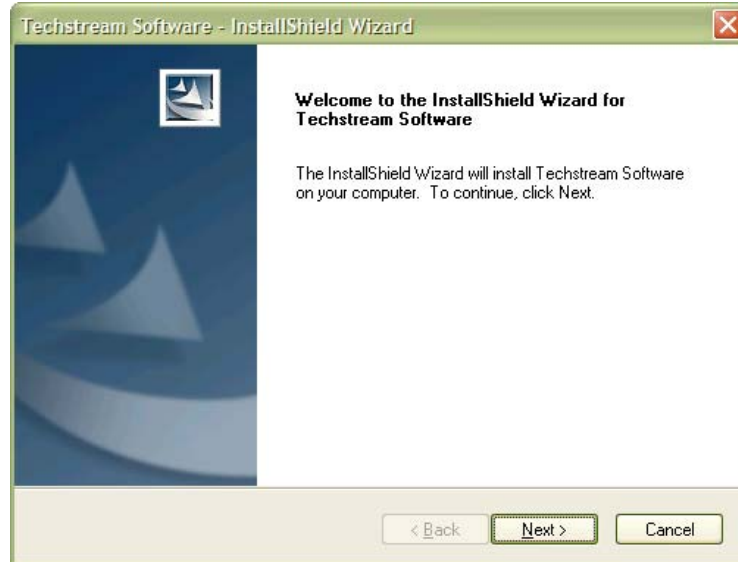


- Software Installing

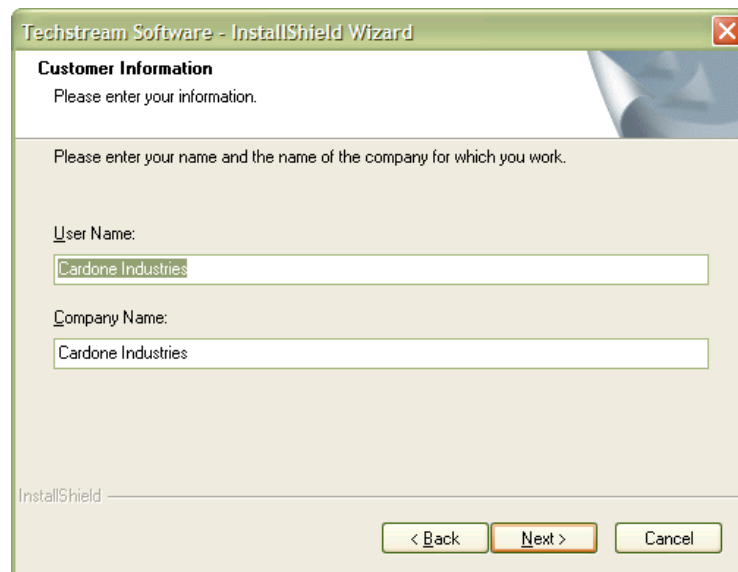




Toyota Techstream and VIN Update Wizard (VUW) Installation



- Click NEXT



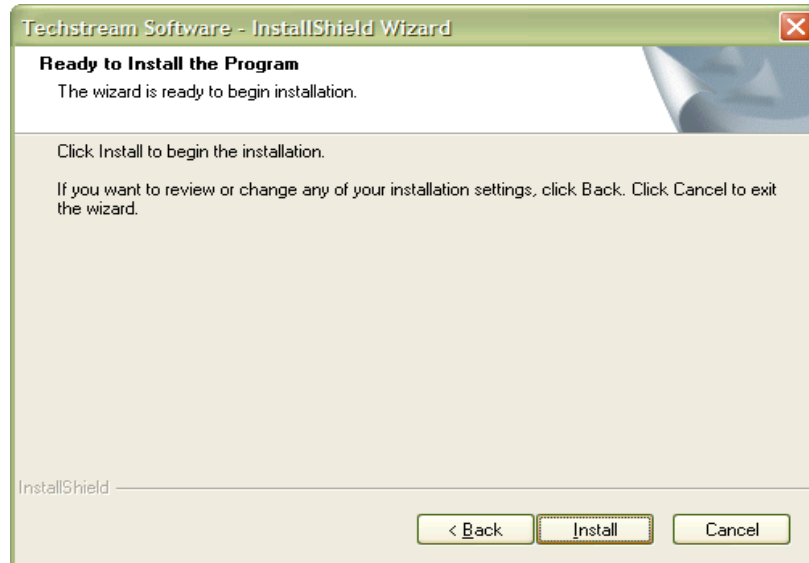
- Input required information, then Click NEXT



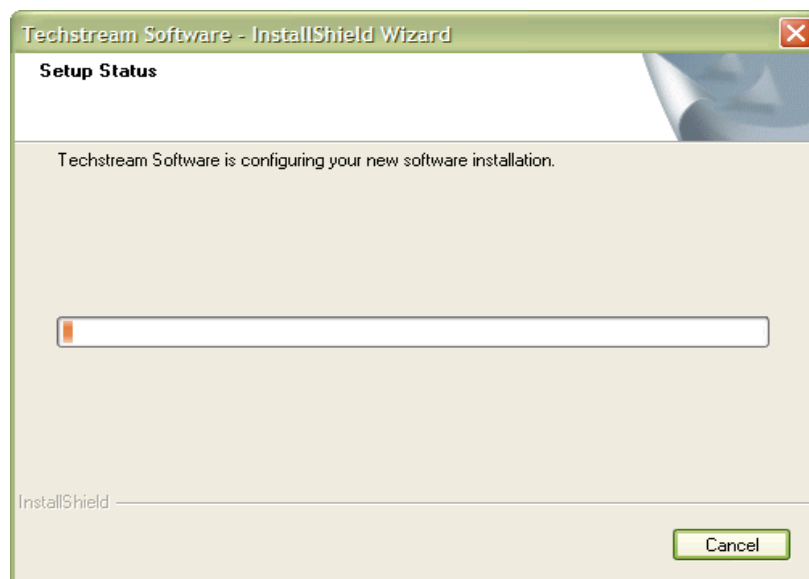
Orig. Date: 12/12/99	Rev. Date: 10/14/2010	Rev. Level: 002	Doc. # E2
----------------------	-----------------------	-----------------	-----------



Toyota Techstream and VIN Update Wizard (VUW) Installation



- Click INSTALL

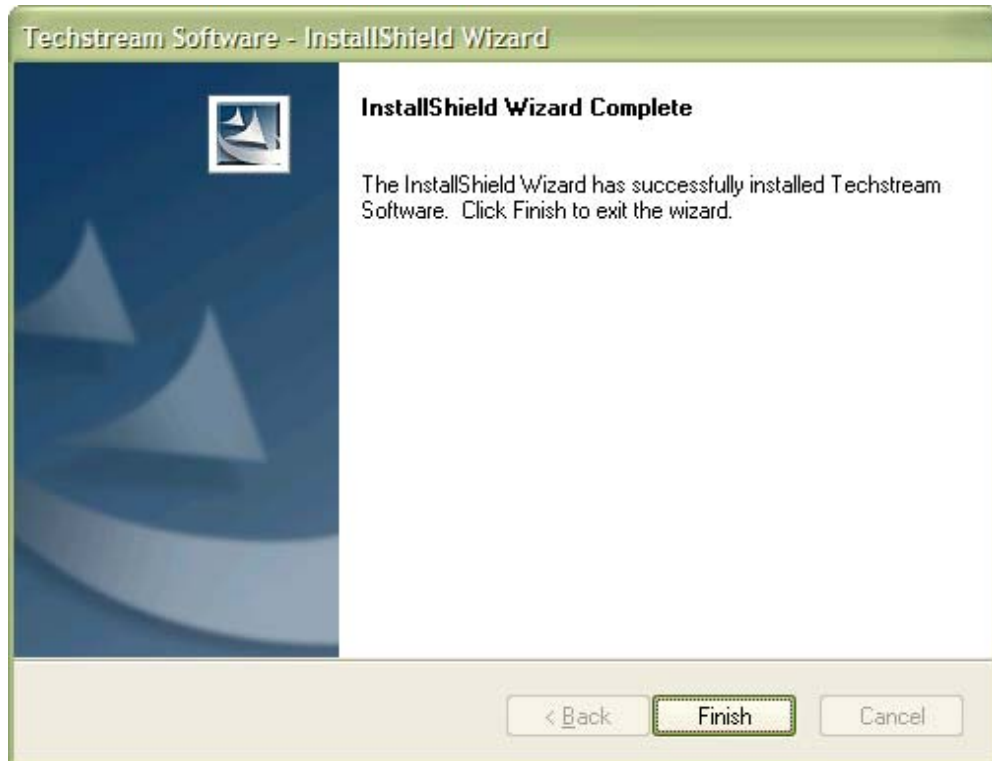


- Downloading software into computer (Wait for download....Wait.....Wait)





Toyota Techstream and VIN Update Wizard (VUW) Installation



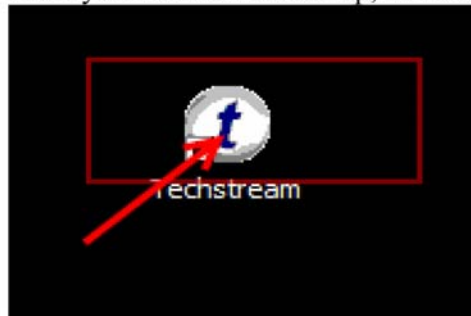
- Click Finish.

Toyota Techstream and VIN Update Wizard (VUW) Installation

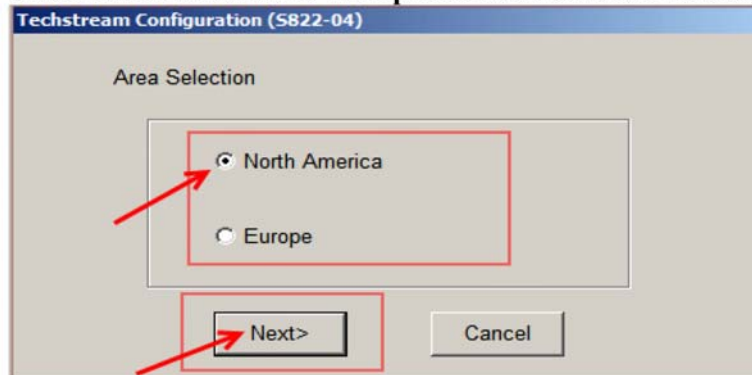
Configuring Techstream Software for Your PC

Perform the following:

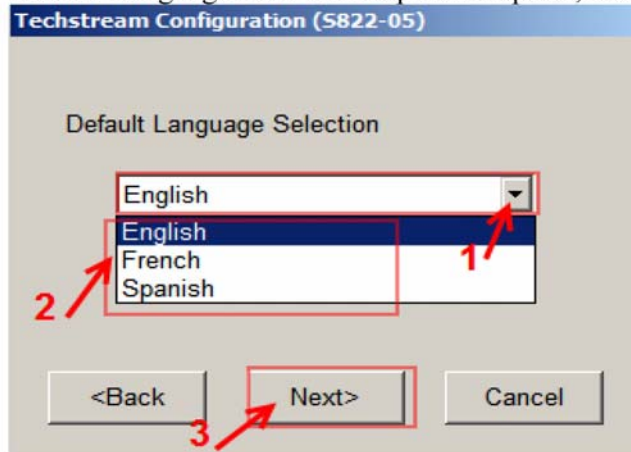
1. From your Windows Desktop, double click on the Techstream icon



2. Select **North America** or **Europe** and click on **Next>** to continue



3. Select a Language from the Drop-down option, default is **English**





Toyota Techstream and VIN Update Wizard (VUW) Installation

4. Enter the required information as shown below and click on **OK** to continue

- Input all required information (If you do not have a DEALER CODE you can use OTHER).





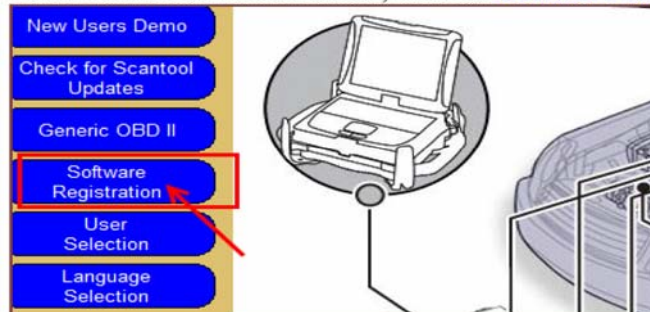
Toyota Techstream and VIN Update Wizard (VUW) Installation

Registering Techstream Software

Techstream Software requires registration with the TIS site before it can connect to a vehicle. Techstream registration is limited to only one PC per TIS subscription. The Techstream registration will be good for the duration of the TIS subscription.

To Register perform the following:

1. From Techstream Main screen, click on **Software Registration**



2. Click on **Software Registration** button





Toyota Techstream and VIN Update Wizard (VUW) Installation

3. Login to techinfo.toyota.com website

TIS TECHNICAL INFORMATION SYSTEM

Subscriber Login

User Name: Remember Me

Password:

[Forgot User Name or Password?](#)

4. Copy the Key from TIS website

Scantool Registration

Software ID: Software Version:

1. Double click to highlight the entire key
2. Press down Ctrl + C from the Keyboard to copy

Key:

5. Return to Techstream Registration screen and paste the Key in the Key: box then click **OK** to register.

Register Techstream Software (S826-03)

Registration information:

Software ID: 4C4C4544-0042-5410-8056-C3C04F464331

Software Version: 4.20.018

Key:

To register software, click on the Software Registration button below. If you are unable to access the software registration web page, contact Techstream support. For Techstream support, click the Support Information button below.

1. Place the cursor in the key box
2. Press Ctrl + V from the Keyboard to paste

3

The Registration screen is now closed and Techstream software is registered

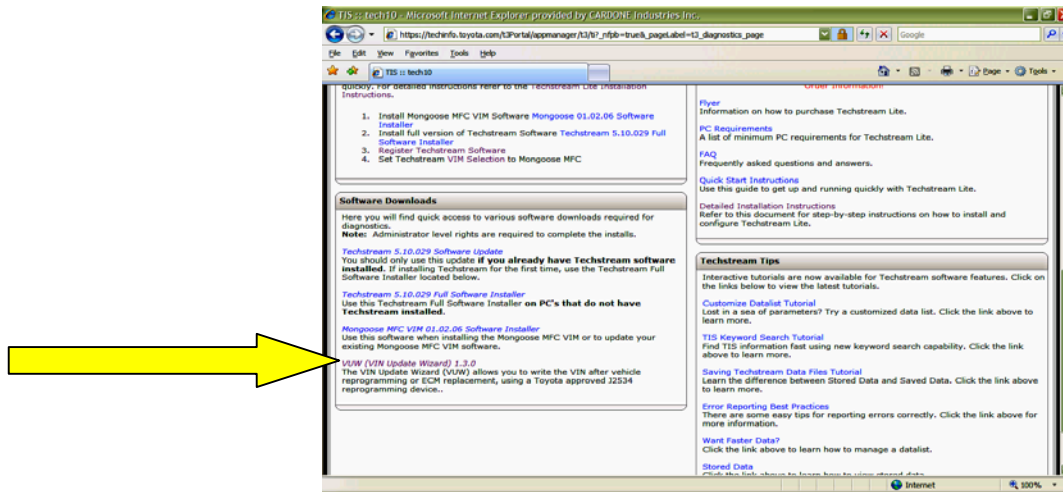




Toyota Techstream and VIN Update Wizard (VUW) Installation

The VIN Update Wizard (VUW) allows you to write the VIN after vehicle reprogramming or ECM replacement, using a Toyota approved J2534 reprogramming device..

- VUW:
 - Scroll down the page to the “Software Downloads” section.
 - Click on “VUW (VIN Update Wizard)”



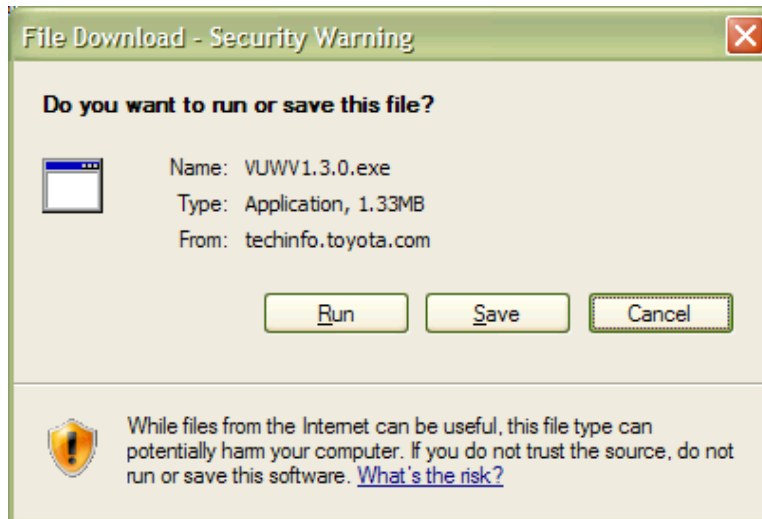
- Click on the Link



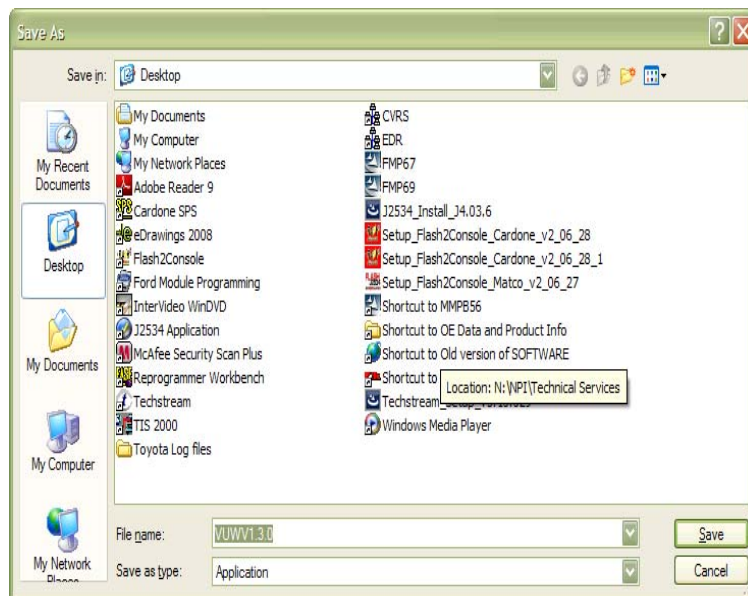
Orig. Date: 12/12/99	Rev. Date: 10/14/2010	Rev. Level: 002	Doc. # E2
----------------------	-----------------------	-----------------	-----------



Toyota Techstream and VIN Update Wizard (VUW) Installation



- Click SAVE

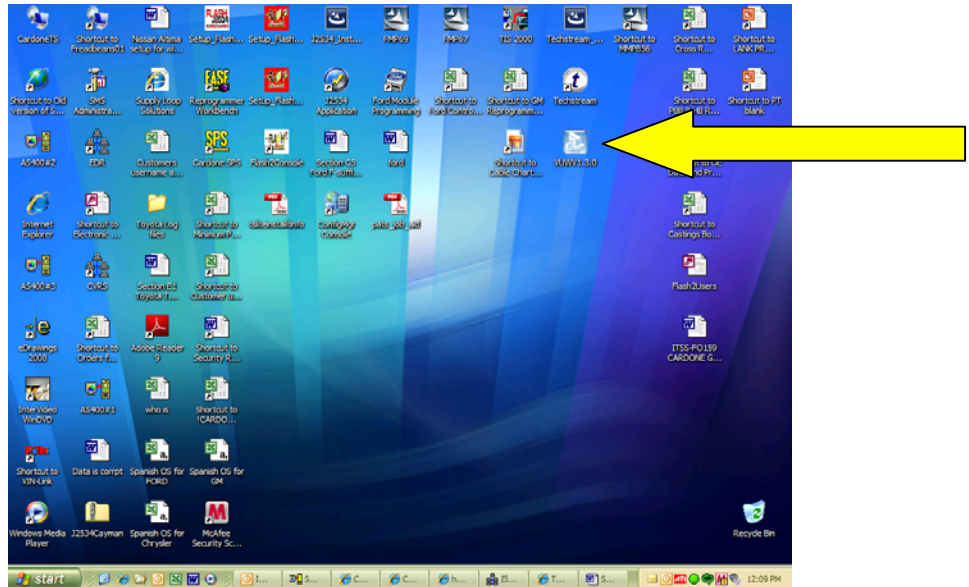


- Save to Desktop

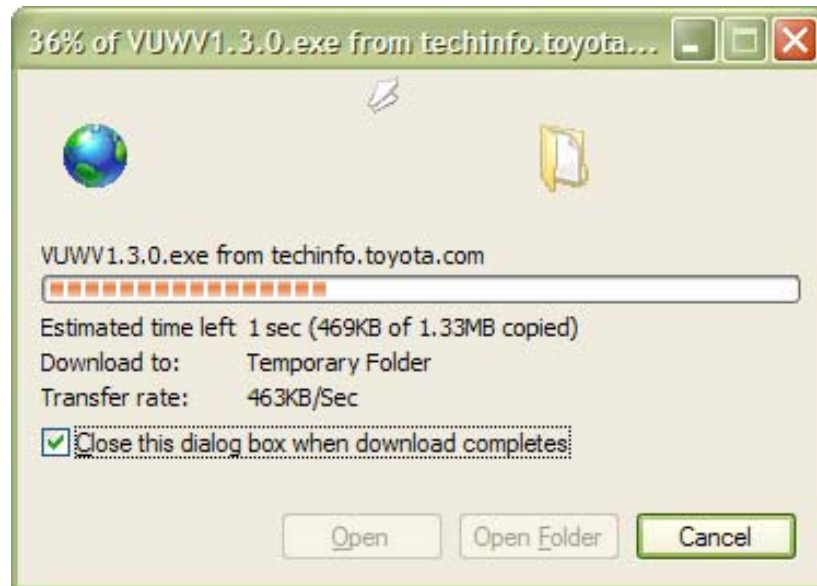




Toyota Techstream and VIN Update Wizard (VUW) Installation



- Locate Icon for VUW and double Click



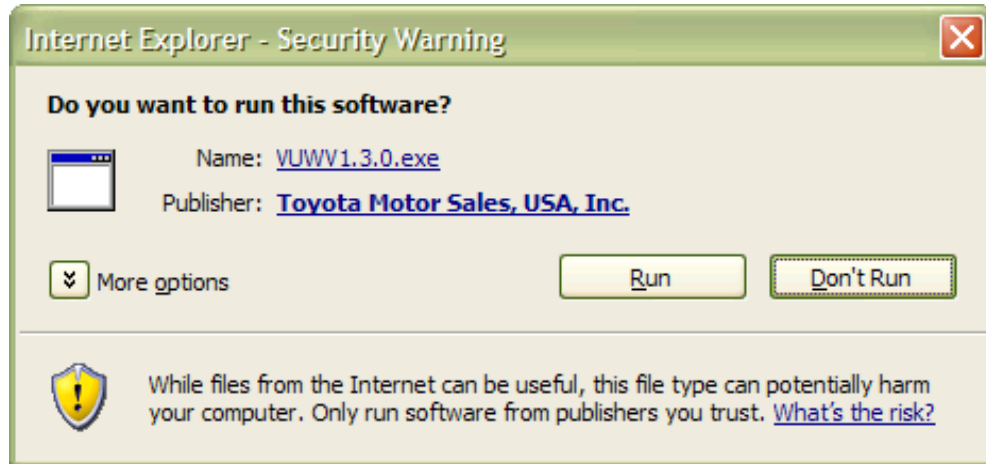
- Files transferring



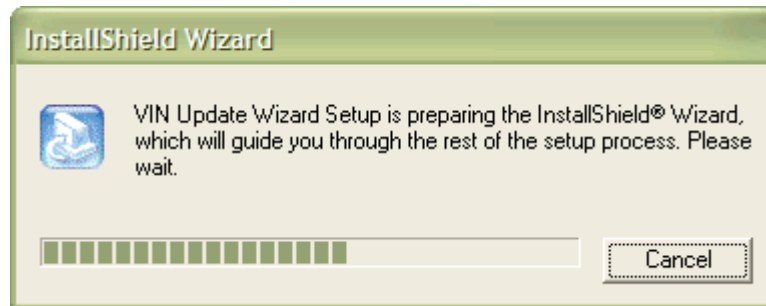
Orig. Date: 12/12/99	Rev. Date: 10/14/2010	Rev. Level: 002	Doc. # E2
----------------------	-----------------------	-----------------	-----------



Toyota Techstream and VIN Update Wizard (VUW) Installation



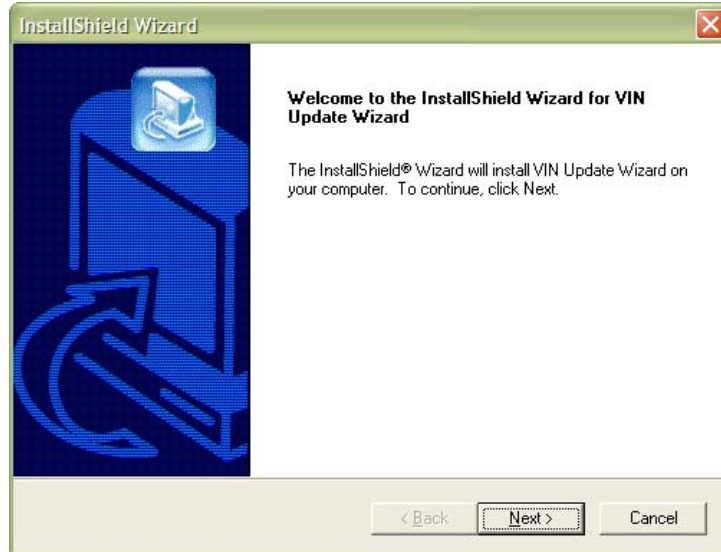
- Click on Run



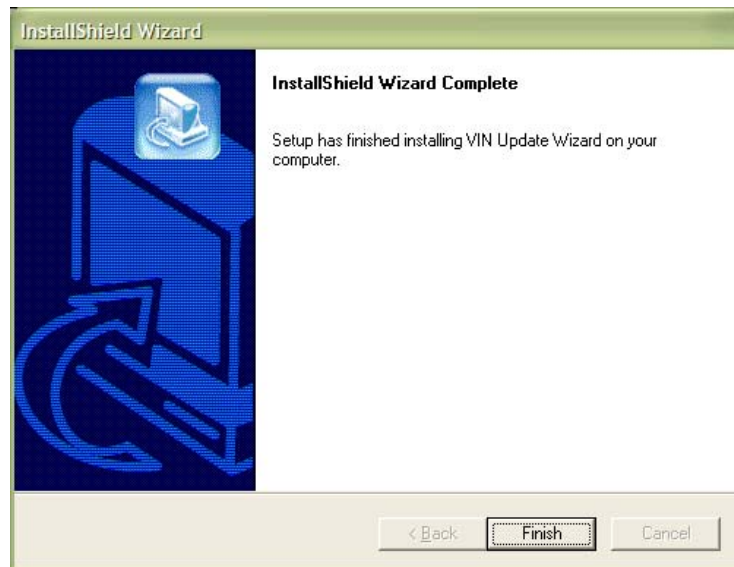
- Transferring data



Toyota Techstream and VIN Update Wizard (VUW) Installation



- Click NEXT



- Click FINISH

End of process





Toyota Techstream and VIN Update Wizard (VUW) Installation

Blank page



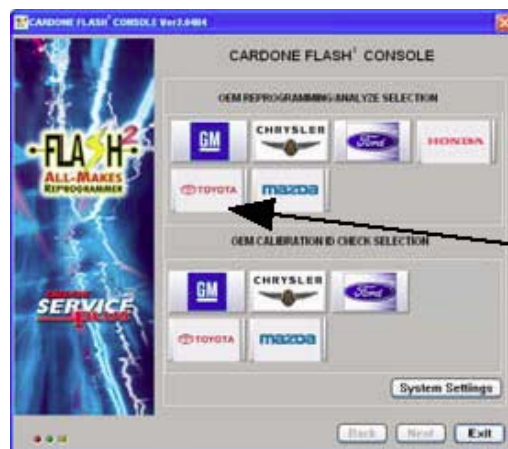
Orig. Date: 12/12/99	Rev. Date: 10/14/2010	Rev. Level: 002	Doc. # E2
----------------------	-----------------------	-----------------	-----------



Toyota On-Car Reprogramming Guide

NOTE: This process reflects the Toyota Reprogramming procedure as of the posted revision date. If the OEM has changed their site, please contact them for available services, information and instructions. The screens shown are from a typical reprogramming event and may vary from application to application. In such an event, please follow the Toyota TIS screen prompts and respond accordingly.

- Click on Toyota, then Flash2 Reprogramming



- Read the warning notices, click **NEXT** and then **OK**.



- Carefully read and follow Battery Test advisement notes, then click **BATTERY TEST**.

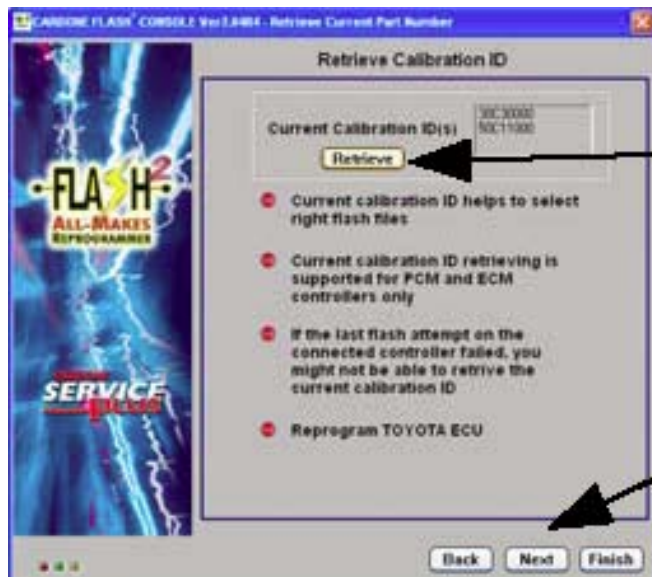


Toyota On-Car Reprogramming Guide

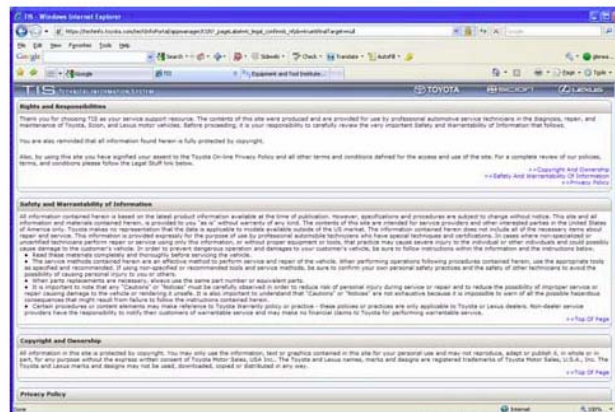
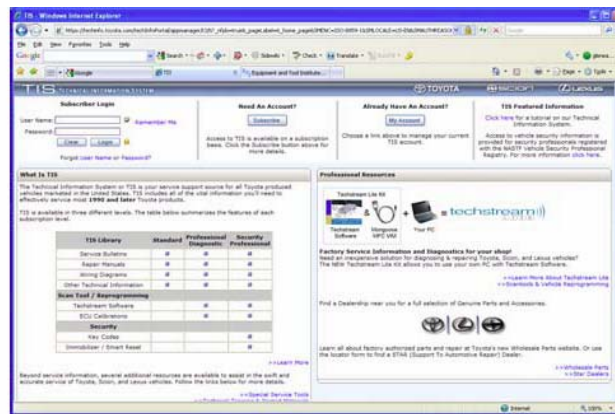
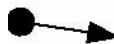
- Click **NEXT** when battery voltage is acceptable.



- Knowing the current calibration will help determine if an update is actually available later in the process. Click on **RETRIEVE** and write these numbers down for future reference. Click **NEXT** to continue.

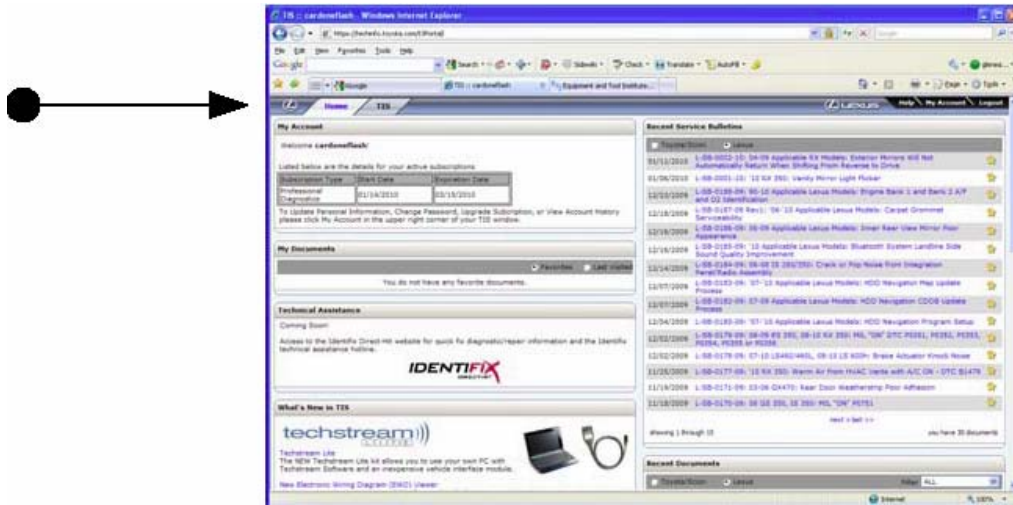


- Log on to Toyota <https://techinfo.Toyota.com>

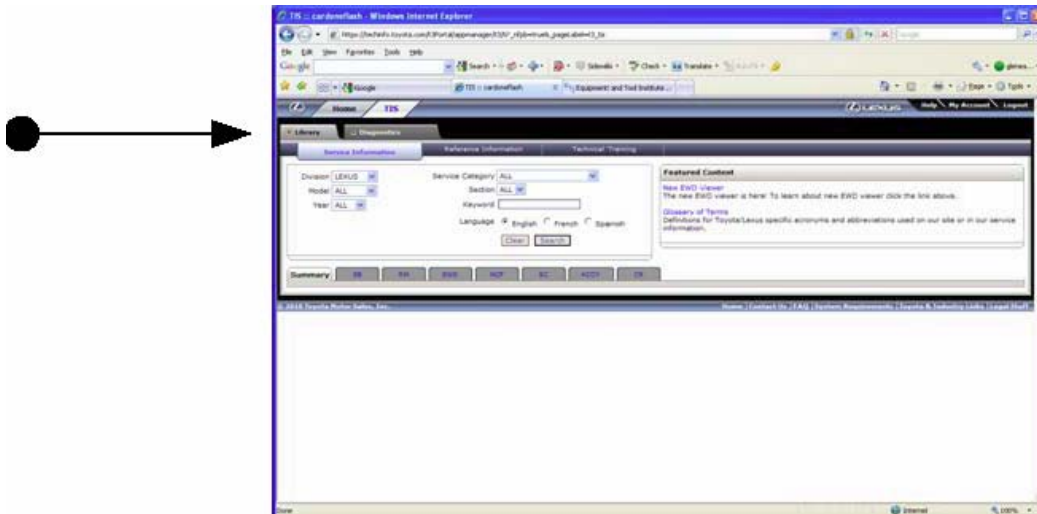


Read notices, scroll to the bottom and click **I Agree** if you agree (screen shown appears upon new subscription one time only).

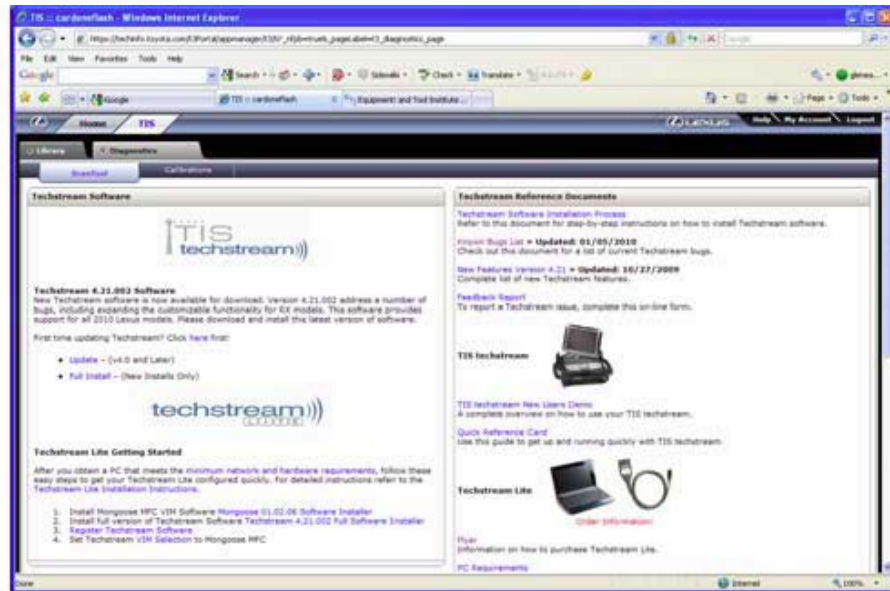
- Click on **TIS** tab



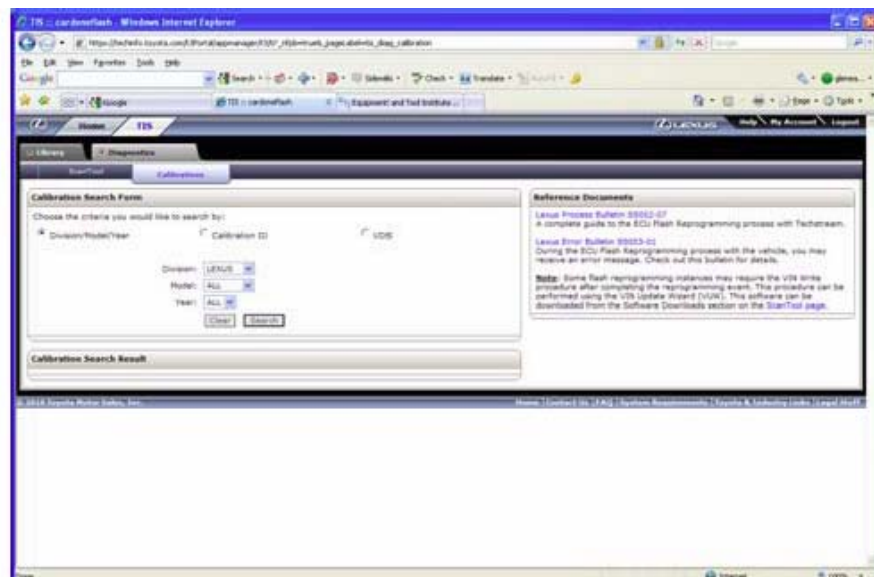
- Click **DIAGNOSTIC** tab



- Click on **CALIBRATIONS** tab.

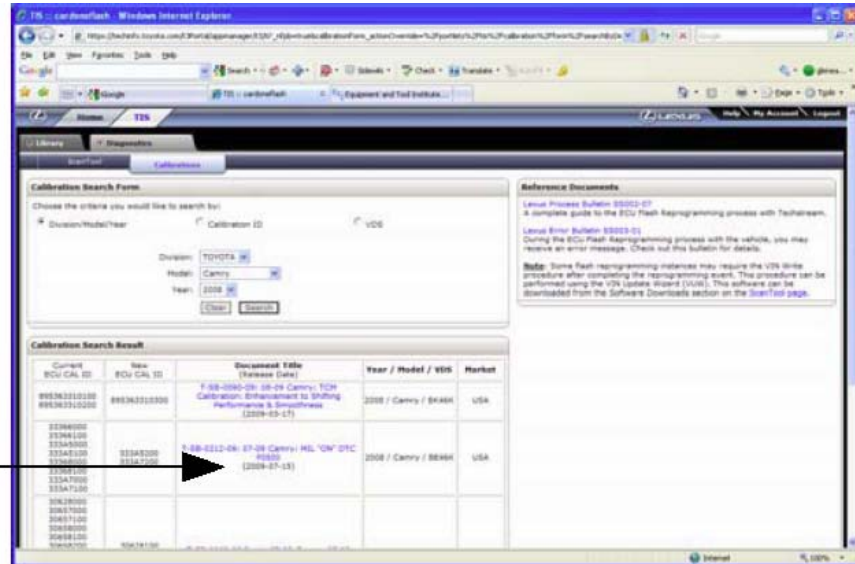


- Click on **Division/Model/Year** or **Calibration ID** and enter the appropriate information. When using “Calibration ID”, enter the **current** calibration ID.

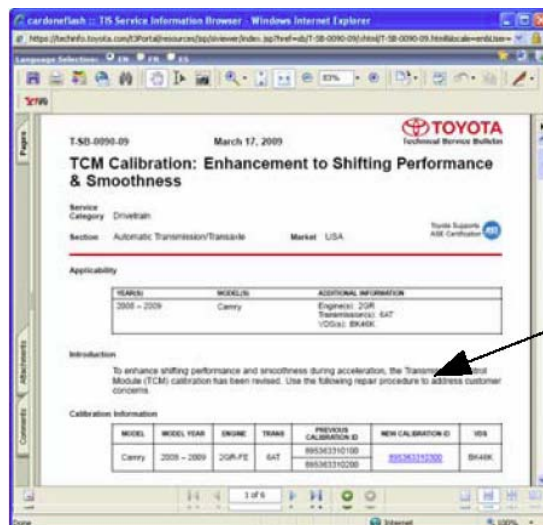


Toyota On-Car Reprogramming Guide

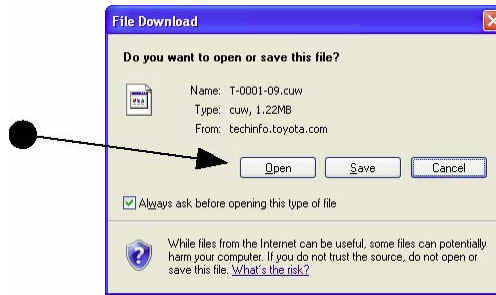
- Toyota only provides Calibration updates when associated to a TSB. Scroll through and select the appropriate “Document Title” link.



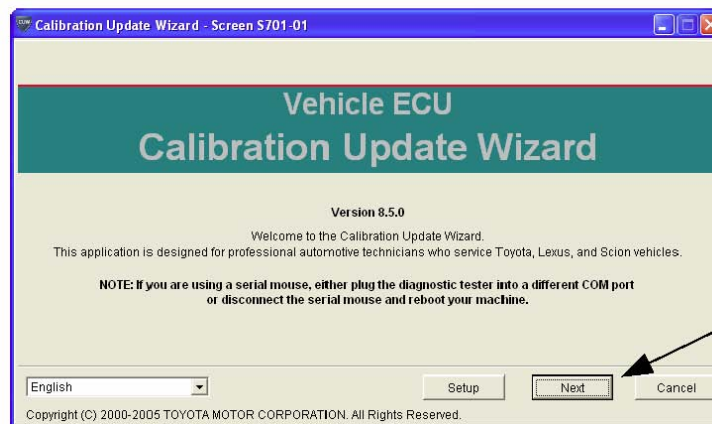
- The applicable Service Bulletin will open in a separate window. Select the applicable “New Calibration ID” shown.



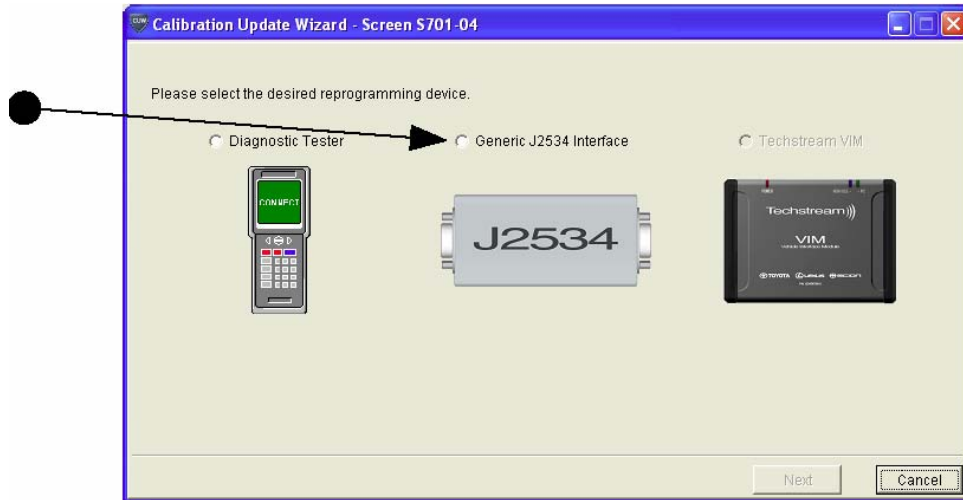
- Select **OPEN**



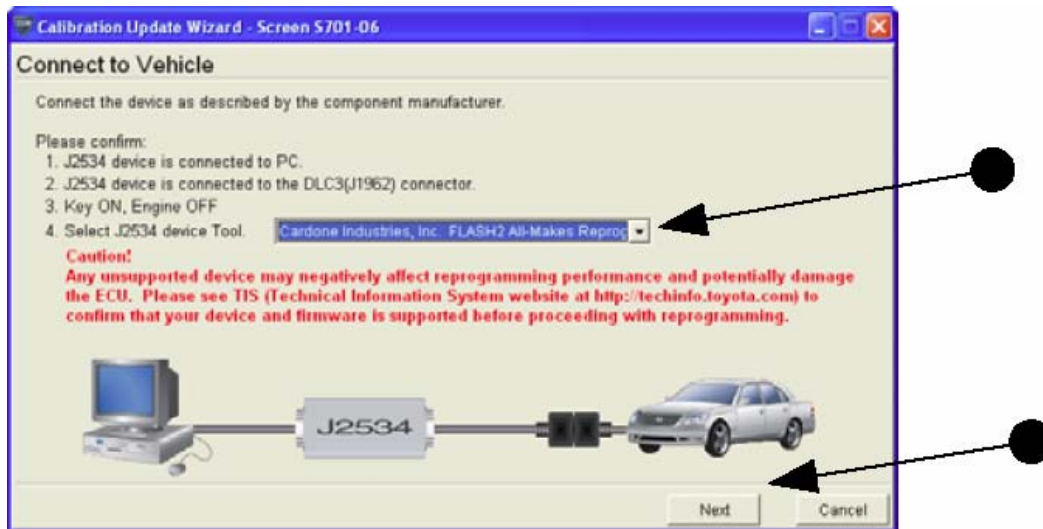
- Select **NEXT**



- Select **GENERIC J2534 INTERFACE** and then click **NEXT**.

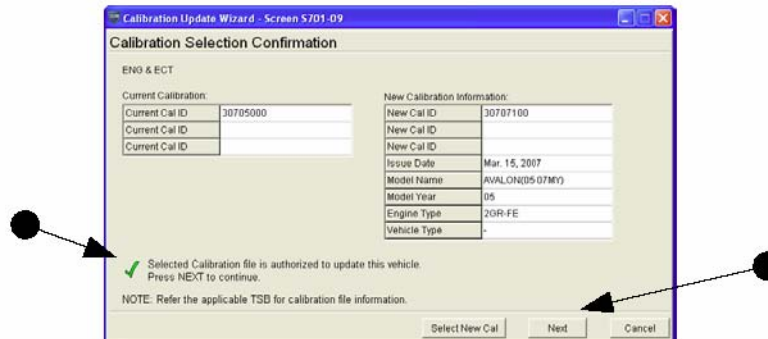


- Be sure “**Cardone Industries, Inc., FLASH2 All-Makes Reprogrammer**” is selected, and then click **NEXT**.

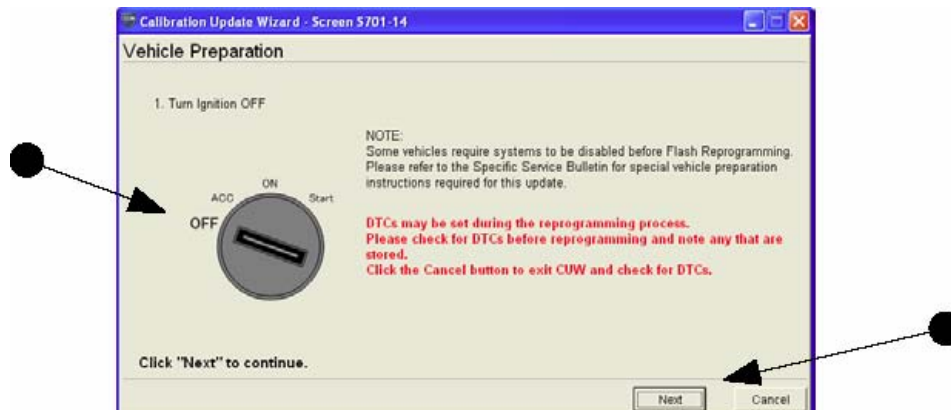


Toyota On-Car Reprogramming Guide

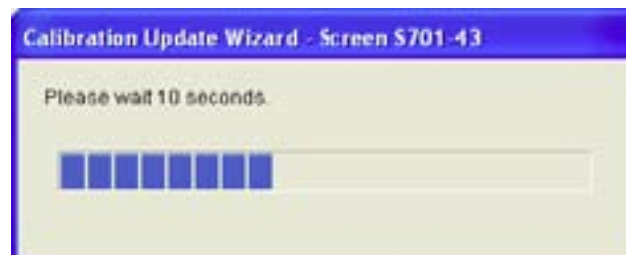
- Select **Calibration file is approved for update!** Click **NEXT** to continue.



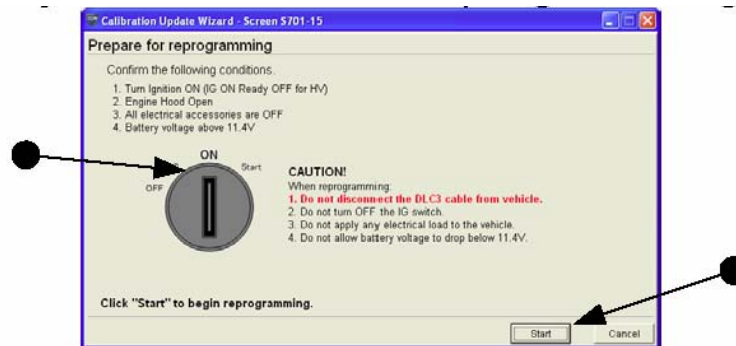
- Turn Ignition **OFF**, read notice, and then click **NEXT**.



- WAIT 10 seconds.



- Turn Ignition **ON**, Read and click **START**.

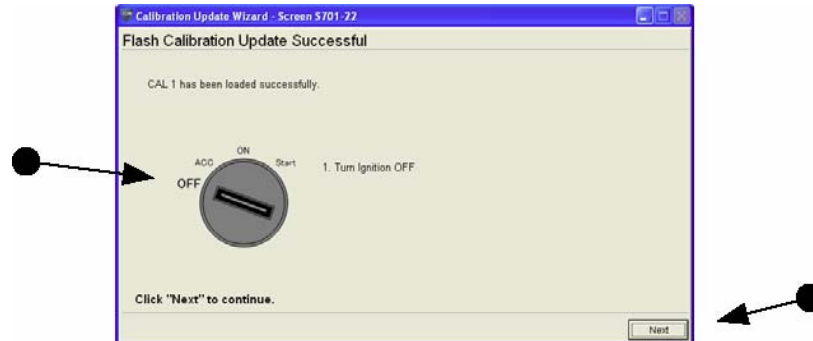


- Flash Reprogramming begins.



Toyota On-Car Reprogramming Guide

- When reprogramming is finished, turn ignition **OFF**, then click **NEXT**.



- WAIT 10 seconds



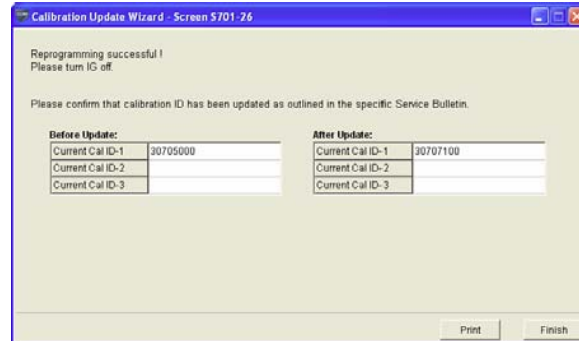
- Turn ignition **ON** and then click **NEXT**





Toyota On-Car Reprogramming Guide

- Reprogramming event successful! Click **FINNISH**.



- Close the related Toyota screens.
- Once at the FLASH2 Console Status screen you may select **GET STATUS** and/or **PRINT**, then click **FINNISH** to close.

End of process.



Toyota On-Car Reprogramming Guide

THIS PAGE LEFT INTENTIONALLY BLANK



Orig. Date: 12/12/99	Rev. Date: 8/18/10	Rev. Level: 002	Doc. # E3
----------------------	--------------------	-----------------	-----------