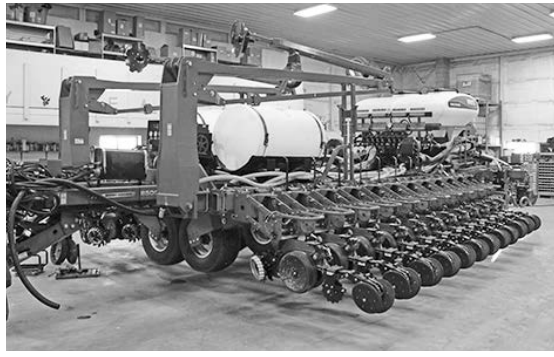


NOVEMBER FEATURED CLASSIFIEDS



3-Pt. tile plow, 6" boot, 4' depth, 3-pt. cart not included, \$8,000.
(517) 525-6845



'12 White 8524 32R22" CFS Gen 1 20/20, AirForce, Yetter 2x2, Yetter row cleaners, TRIMBLE FieldIQ, field ready, call for more details.
(989) 553-0144



'73 Int'l. F2070, 22', Omaha bed, hoist, Det.
(574) 633-4852



Hereford Heifer, scheduled for butchering on Nov. 8, 2021, Belingers, St. Johns, MI, \$3/lb. HANGING WEIGHT plus processing.
No texts (989) 798-4505



Johnson tile plow, new, never used, 5' working depth, plow cart, lasers, all new, \$37,000 or best offer.
(517) 202-9154



Clean wheat straw bales, regular size, strapped in bundles of (21) bales, easy to load, strap & haul, \$3 ea.
(810) 577-3159

'15 Bobcat E32, hyd. thumb, 19" bucket, 80% U/C, low hrs., \$35,000
'13 Deere 50D, ROPS, new tracks, 4-way blade, \$38,500
'18 Bobcat S570, cab, 2 spd. hi-flo, \$35,000
'19 Cat 279D, A/C, new tracks, 79" bucket, 775 hrs., \$70,000
'18 Cat 249D, cab, 80%+ tracks, backup camera, \$40,500
'04 Deere 310SG CX4, 100% frt. tires, 50% rear, \$32,500
'97 Deere 410E CX4, 24" rear bucket, \$29,500
'06 Deere 310G, A/C, rear aux., 100% frt. tires, 50% rear tires, \$36,500
'05 Deere 310G CX4, 18" bucket, low hrs., new rear tires, \$38,500
'06 Case 580SM II CX4, A/C, aux. hyd., low hrs., \$42,500
'04 Case 580SM Plus CX4, A/C, pilot, \$36,500
'13 Skytrak 10054, solid tires, \$45,000
'07 Skytrak 6042, foam filled tires, wide carriage, \$38,500
'17 Kubota B26 T/L/B, 4x4, \$28,000
'18 Kubota BX23S, \$19,500
'17 Kubota BX23S, \$18,500
Mid Michigan Services Company, Inc.
8458 Torrey Rd.
Grand Blanc, MI 48439
(810) 655-2025 or Mobile (810) 348-4089
E-mail: mmsci@comcast.net
Web: www.mid-michiganequip.com



'90 Cat Challenger 65, 270 hp, new tracks, 5000 hrs., 10 spd., pwr. shift, \$28,000.
(810) 326-4565



'08 Case IH 3208 28" corn head, \$32,000
'10 White 8523 split row planter, central fill, no-till coulters, Keaton firmers, bean & corn plates & monitors, \$62,000
(989) 397-2681



NI 310, 1R corn picker, stored inside, good cond., \$1,650. More pictures avail.
(616) 550-5100



JD 4555, 7600 hrs., the hrs. might go up as we use it on our farm, good A/C & heat, has brand new int. kit.
(616) 255-5025



'84 Ford 8000 grain truck, Cat dsl., 10 spd., new spgs., clutch, muffler, 166,000 miles, 650-bu., Shurco tarp, \$15,000.
(810) 326-4565

3x4 Bales of wheat straw, delivery avail, grinding hay rained on 2nd/4th cutting.
(989) 233-4236

3x4 Large square bales, delivery avail., nurse crop oats/alfalfa, 1st/2nd cut orchard grass alfalfa mix, organic 1st/2nd cut alfalfa.
(989) 233-4236

Gleaner F2 combine, 13' head, 4R corn head, everything works & runs good, spare parts included, \$6,000 or best offer.
(989) 506-4295

'30 Al Case tractor, new tires, asking \$5,000
725 Dsl. Grasshopper mower, 61" fold-up deck, grammar seat, like new, 300 hrs., asking \$10,000
(989) 975-4312 Leave message

30' Rotary hoe JD 400
Gleaner E combine
Westco rock picker
8R Brillion folding cult.
JD 40 combine
(574) 633-4852

WANTED
3.9 4BT Cum. engs., running, take outs or rebuildable cores.
Also buying injection pump cores
We rebuild injection pumps & injectors
Northern Power
(231) 743-6817



'95 Military cargo/flatbed truck, Cat 3116 turbo, 7 spd. Allison, 5,000 miles, 22,770 GVW, \$14,500.
(810) 326-4565

WANTED
JD 716A forage wagon, good cond. or for parts.
(616) 520-1982

WANTED
JD 4R or 6R mtd. bean puller
Lockwood/Innes 4R or 6R bean windrower
(616) 520-3264

Case 580CK tractor, ldr., backhoe, 100 hrs. on injection pump & injectors, needs TLC, runs good, don't use it anymore.
Call or text (810) 650-1004



HAY FOR SALE

Thank you to everyone that bought hay this last season. We are preparing for the coming season & are looking forward to talking to new customers & making even more hay.
David & Tammy Bell Family
(906) 440-6455

Propane tanks, brand new, vacuum purged, 1000-gal., \$3,050; 500-gal., \$1,950.
(989) 386-8686 8 am - 6 pm,
Closed Thursdays & Sundays

Conestoga Champion outdoor gasifying wood furnace, the cleanest burn & highest efficiency line of wood furnaces.
For more info, call
Linus Martin (989) 261-3285

'12 NH T 360, 3000 hrs., frt. susp., w/ Pitbull silage blade, 14', 8-way, very little use, \$135,000
Approx. (500) tire sidewalls, \$2 ea.
(44) Norbco freestalls, single beam mt. w/ neck rail & clamps, H.D., \$2,500
Poly calf warming box w/heater, \$450
Ritchie poly water fountain, 90", \$425
(80) Freestalls w/neck rail, \$20 ea.
Norbco, various lengths of gates, some w/quick latches, \$12/ft.
(989) 345-1501

JD 2640 w/146 ldr., fresh o'haul, new radiator & clutch, \$9,500
MF TD524 (4) basket tedder, like new, \$6,400
(989) 727-3252

RETIRED!
28' Glencoe soil finisher, 5-bar rake, set up for packer; 3-Pt. 14-shank Bush Hog chisel plow, high clearance; Extra parts; Pkg. deal, \$7,000 or best offer.
(517) 930-3803

WANTED
JD 4R or 6R mtd. bean puller
Lockwood/Innes 4R or 6R bean windrower
(616) 520-3264

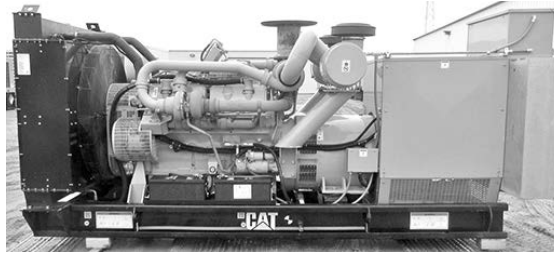
2-Prong bale spear & set of pallet forks to fit JD 640 & 740 ldr., \$650 ea.
(616) 835-5426 or (616) 893-8080

(2) Firestone 30.5/32 14-Ply 60% tread, rice & cane tires, cheap.
(810) 384-1713 or (810) 841-1947



Case 721 whl. ldr., clean machine, 8.3 Cum., 3-yd. bucket, approx. 7000 hrs. on machine, approx. 4500 hrs. on rblt. eng., \$35,000 or best offer.
(734) 216-5339

DMI 4250 NH3, 17 shank side dress
30' Rotary hoe JD 400
Gleaner E combine
Westco rock picker
JD 512 chisel, 9-shank w/drag
8R Brillion folding cult.
JD 40 combine
(574) 633-4852



GENERATORS: Used, low hr. take-outs, 20kW-2000kW, dsl., propane, nat. gas.
Abraham Generator Sales Co.
(701) 371-9526

(44) Calf pens, 72"x40", 2-hole head gates, pens are back to back w/poly dividers, \$8,500
Slurry Store, 1.2 million gal., 120' diam., (4) rings high w/Houle 6" pump, (2) center, (1) over top agitation, \$25,000
Flygt pump, submersible, 20 hp, 480V w/ overload protection controls, used less than 1-1/2, \$12,500
NH Big Baler 340 crop cutter, 6000 bales w/applicator, always housed, \$115,000
(989) 345-1501

Will build hay wagon bed made out of oak, 16' \$600; 18' \$650.
5543 E. Herrick Rd.
Clare, MI 48617
(989) 386-4866

'13 Case IH 1240 16x22 planter, liquid 2x2 & in-furrow, row cleaners, 700 mon., low acres & well taken care of, owner retiring.
(989) 550-3357

John Blue 1000-gal., 50' sprayer, \$2,800; IH 720 5-btm. plow, \$1,800; '90 Cat Challenger 65, \$28,000; Jamco 1200-bu. dbl. hopper grain trlr., \$14,000.
(810) 326-4565

STRAW & HAY FOR SALE
4'x5' round bales, net wrapped, straw stored inside \$32/bale, straw stored outside \$24/bale, grass hay stored outside \$40/bale.
Whittemore Farms
Whittemore, MI
(989) 756-2783



'13 Case IH 550, field ready, 36" belts, 3000 hrs., 500 on eng. rebuild, leather, eng. warranty until Jan. '22 w/papers, 4-SCV, GPS w/FM-750, DEF Del. bare-back, \$190,000.
(810) 404-9504

JD 606 cutter, pull-type, \$500
JD MaxEmerge 7200 corn planter, dry fertilizer, \$6,000
Hardi TR500 sprayer, 42' boom, manual controls, \$1,200
(517) 740-2096

8" Berkley PTO pump, 810-gal./minute
JD grain drill, dbl. disc, 17-hole
Oliver 70R crop tractor, exc. restore or for parts
Draw bar hitch clam, will handle 8' & 10' logs
Gas 8 hp generator
8" alum. pipe, 6" alum. pipe, 4" alum. pipe w/sprinkler heads, all 30" footers
(989) 351-8304

Sunflower 5035 field cultivator, 27', new in '14, not used since '17, attached Unverferth dbl. roller, \$35,000
No texts (989) 798-4505

Michigan sugar beet shares for sale.
(810) 705-0181

32' Houle manure pump, very good cond., \$10,500 or best offer.
(989) 424-1172



WE ARE A MOUNTAIN TARP DEALER
All tarping needs are avail. Call for details & fall pricing.
(989) 550-0644

Large square bales of wheat & oat straw, 3x4x8 squares & 3x4x6 squares, delivery avail.
Large square bales of grass hay, 3x4x6 squares
Oats available
Glencoe 13 shank chisel plow
Case 4300 32' field cult., 5 spike bar w/ rear hitch
'09 FTL Columbia semi w/ C13 CAT eng., 702,000 miles, 10 spd. automatic, trans., road ready
2nd, 3rd & 4th Cutting alfalfa hay, large square bales avail.
(810) 404-5978 or (810) 404-5977

WANTED TO LOCATE
'77 JD 4430 tractor, S/N 76079, I purchased new.
(989) 330-3739

WANTED:
Picket rod puller, Speedy bean puller, Lockwood windrower & Sund pickup.
(989) 860-3917

JD 9610 4x4 combine, 3200S hrs., \$28,000
JD 893 corn head, \$11,000
JD 925 grain head, \$7,500
Fremont, MI
(231) 206-8850

Young laying hens for sale, ready to lay, raised non-GMO, special pricing \$9.50 ea. and volume discounts.
Fairview, MI
(989) 335-0080

(500) Nice, tight 4x5 straw bales, inside & outside avail., starting @ \$25/bale.
(269) 838-8156

Insulated steel panels for shop or building, call for pricing
Parting out '81 GMC Astro, 8V71
Natural gas generator, 35KW, \$3,000
Hobart meat band saw 220 elec. \$2,250
Hobart mixer grinder & S.S. tables
Case 1690 needs axle, \$3,750
Gravity conveyor, \$25 per foot
Walk-in coolers & freezers
(616) 293-6531

'76 Mack semi tdm., 350 Cum., \$3,500
IH 806 dsl., new paint, \$6,000
JD 635 hydra flex grain head, w/header cart, \$10,500 or w/o headercart, \$6,000
MF 6R30" corn head, adapted to JD combines, \$1,800
JD 843 corn head, \$3,000
JD 930 flex head, \$4,000
'04 F150 4x4 crew cab, no rust, all options, stored in winter, 94,400 miles, \$13,500
(2) Tires 12x16.5, \$50/pair
(989) 763-1084

Organic alfalfa baleage, individually wrapped, 3x4x6 bales, 180-220RFQ 24-26 protein, delivery avail.
Gene Vogel (989) 415-1023

Old school (mechanical) injection pump repair, dead, sick or leaking pumps repaired at a working man's price.
"Pumpman Al"
(231) 757-0064

WANTED
28' or longer dump trlr. frames, 95' or newer or repairables.
(989) 550-0644

JD 843 corn head, oil bath drive, good cond., \$4,500
(231) 861-5285 Leave a message