

## MIGRATING FROM DESKTOP INTELLIGENCE TO WEB INTELLIGENCE

### **Saurabh Abhyankar**

Solution Management

saurabh.abhyankar@sap.com

### **Tomasz Zima**

Solution Management

tomasz.zima@sap.com

December 2010



## Background

Benefits of upgrading to Web Intelligence

Desktop Intelligence feature coverage in Web Intelligence

Steps to upgrade to Web Intelligence

Next steps

# Background: Desktop Intelligence end of life announced



Desktop Intelligence 3.1 is the last commercially available version

- SAP BusinessObjects BI 4.0 will not include Desktop Intelligence
- .rep files must be converted to .wid to be published to BI 4.0 and future versions of the suite

Desktop Intelligence will continue to be supported on XI 3.x

- Until 2015 for mainstream maintenance
- Until 2017 for Priority-One support

The official end of life notice can be found on the Service Market Place [here](#).

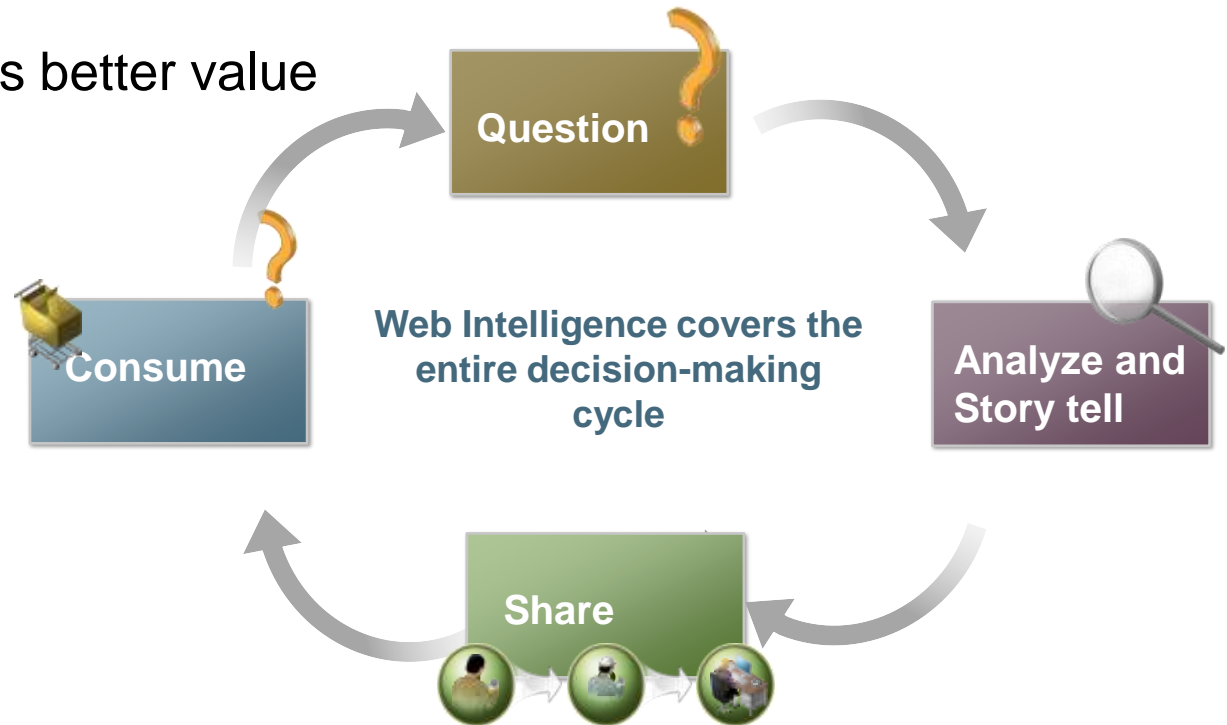
# Why is SAP planning this end of life?



Decreasing interest Desktop Intelligence

Web Intelligence covers the majority of features

Web Intelligence provides better value



Background

Benefits of upgrading to Web Intelligence

Desktop Intelligence feature coverage in Web Intelligence

Steps to upgrade to Web Intelligence

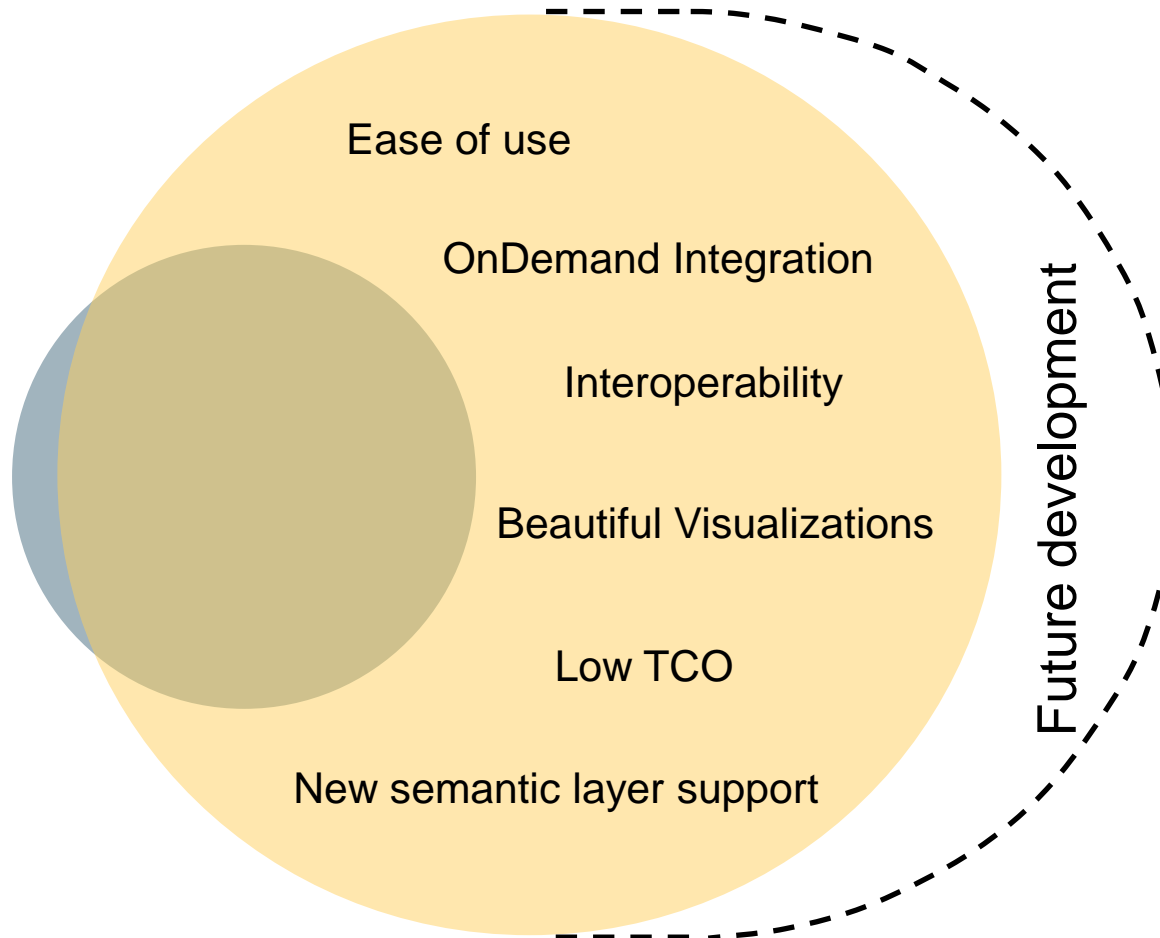
Next steps

# Top reasons to upgrade to Web Intelligence



Desktop Intelligence  
feature set

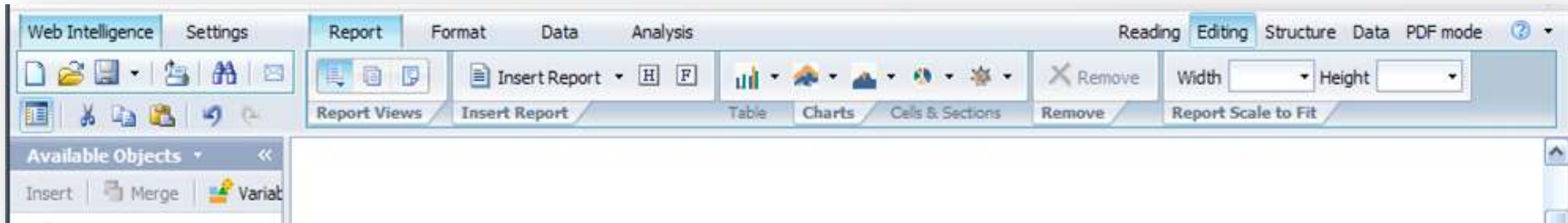
Web Intelligence  
feature set



# Examples User Experience and Charting



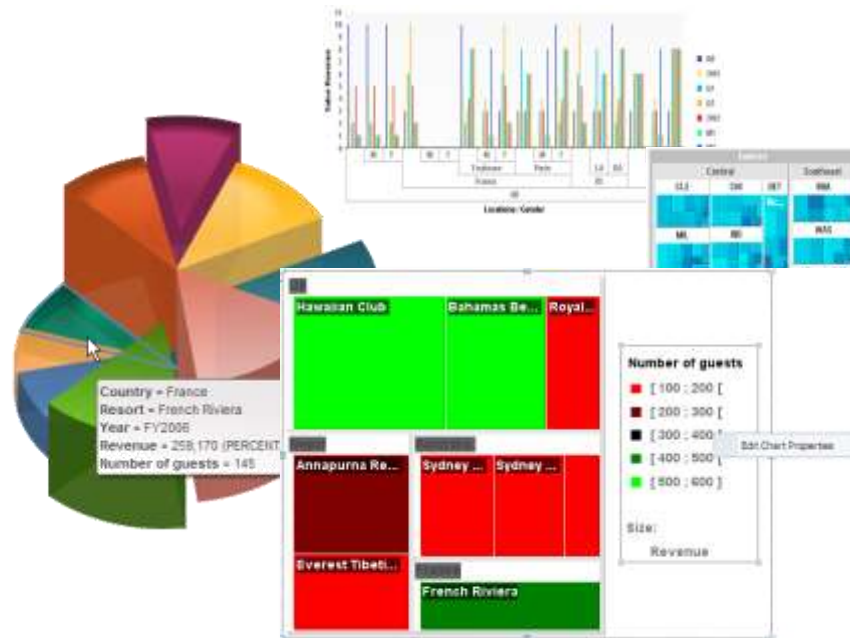
Interface optimized based on years of usability testing across different user types



Dimensional concepts  
integrated into rich  
reporting model



Charting



# Example Data Manager



At-a-glance summary view of each query

The screenshot displays the SAP Data Manager interface. On the left, a tree view under 'Data Providers' shows a hierarchy: 'MiraDevTask-Evolution' > 'Based on NewADAPT' > 'Completed +'. The main area shows a table titled 'Data Provider: Completed+' with columns: 'Project To Examine', 'Dev ADAPT Team', 'FR Id', 'Dev Assigned To', 'State', 'Action Timestamp', and 'Action name'. The table contains 95 rows of data. Callouts highlight key features: 'At-a-glance summary view of each query' points to the table header; 'Sort and filter columns to easily identify data quality issues' points to the 'FR Id' column header; 'Explore any object from any query to isolate its related values' points to the 'Completed +' folder in the tree; and 'Manage all data sources from the same flexible UI.' points to the tree view.

Project To Examine	Dev ADAPT Team	FR Id	Dev Assigned To	State	Action Timestamp	Action name
MIRA-Webi	AR DEV Webi	ADAPT00910503			2001/09/07 07:48:2	Import
MIRA-Webi	AR DEV Webi	ADAPT00910503			2001/09/07 07:48:2	Import
MIRA-Webi	AR DEV Webi	ADAPT00910503			2001/09/07 07:48:2	Import
MIRA-Webi	AR DEV Webi	ADAPT00910503			2001/09/07 07:48:2	Import
MIRA-Webi	AR DEV Webi	ADAPT00910503	Philippe Sire	Closed	2001/09/07 07:48:2	Import
MIRA-Webi	AR DEV Webi	ADAPT00910503	Philippe Sire	Closed	2001/09/07 07:48:2	Import
MIRA-Webi	AR DEV Webi	ADAPT00910541	Christian Fouttier	Closed	2001/09/07 07:48:3	Import
MIRA-Webi	AR DEV Webi	ADAPT00910541	Christian Fouttier	Closed	2001/09/07 07:48:3	Import
MIRA-Webi	AR DEV Webi Client	ADAPT00910541	Christian Fouttier	Closed	2001/09/07 07:48:3	Import
MIRA-Webi	AR DEV Webi Client	ADAPT00910541	Christian Fouttier	Closed	2001/09/07 07:48:3	Import
MIRA-Webi	AR DEV Webi Client	ADAPT00910541	Christian Fouttier	Closed	2001/09/07 07:48:3	Import
MIRA-Webi	AR DEV Webi Client	ADAPT00910541	Christian Fouttier	Closed	2001/09/07 07:48:3	Import

- Provide business users a quick way to understand the data behind simple reports
- Enable power users to gain a deep understanding of multiple data sources
- Provide Desktop Intelligence users with another superior user experience



# Example Multi-dimensional support



The screenshot displays the SAP Query Panel interface. The 'Universe outline' on the left shows a tree structure of dimensions. The 'Result Objects' pane at the top right shows selected objects: Organizations (with sub-items: Northeast D..., Southeast..., France, Germany), Product Model Categories (with sub-items: Children of Accessories, Clothing, Descendants of Clothing), Customer Geography (with sub-items: Descendants of Canada, Children of Germany), and Profit Target. A 'Member Selector' dialog is open, showing a hierarchical tree of members with checkboxes for selection. The 'Summary' table at the bottom of the dialog shows the selected members and their status.

Selection	Exclude	
<input type="checkbox"/>	<input type="checkbox"/>	Northeast Division
<input type="checkbox"/>	<input type="checkbox"/>	Southeast Division
<input checked="" type="checkbox"/>	<input type="checkbox"/>	France
<input checked="" type="checkbox"/>	<input type="checkbox"/>	Germany
<input checked="" type="checkbox"/>	<input type="checkbox"/>	European Operations
<input checked="" type="checkbox"/>	<input type="checkbox"/>	Children of North America Operations

Integration of hierarchical concepts into query panel user experience

Dimensions presented as native hierarchies from dimensional sources

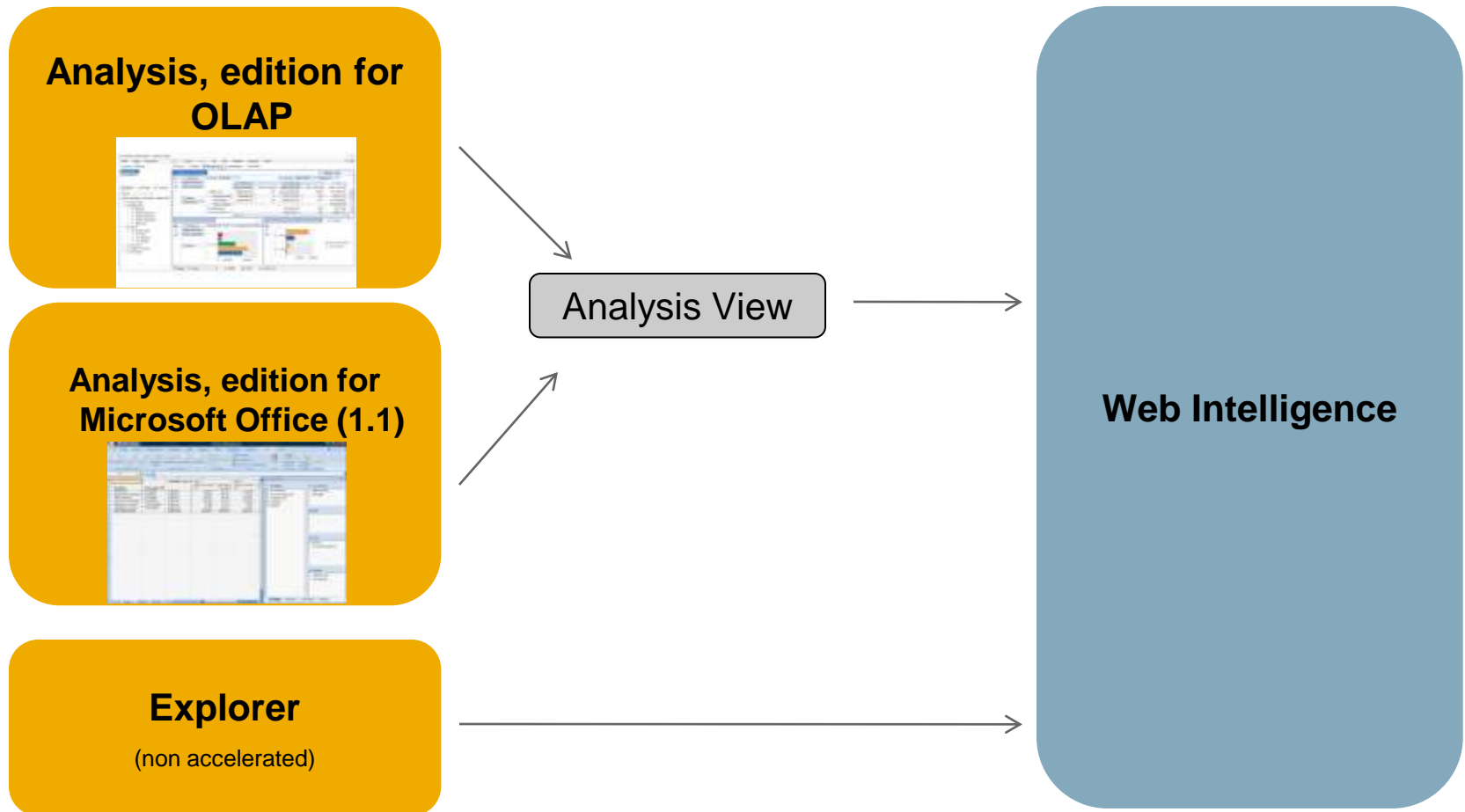
Member selection for selecting hierarchical values

- More control and visibility for precise data selection during Query Definition
- Direct access to BEx queries

# Example Interoperability



- Analyze OLAP data in SBO Analysis (edition for OLAP or edition for MS Office 1.1) and then format and report in Web Intelligence
- Explore your data in Explorer, and then analyze further, format or report in Web Intelligence



# Example Multiple Delivery Options



### Office Integration



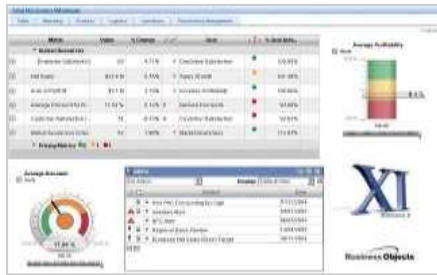
### Custom Application



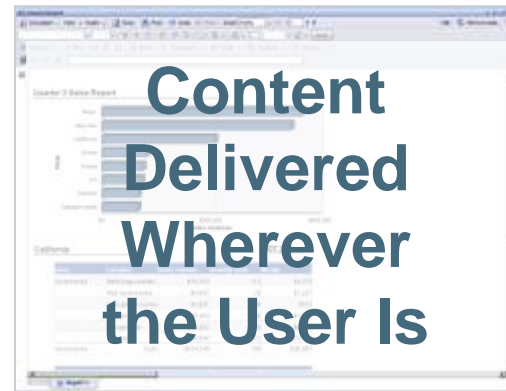
### Desktop Widgets



### Dashboards



### Portal



### Offline



### Mobile



# Web Intelligence Feature Benefits

## More detail...



- Track Data Changes
- Report to Report and URL linking wizard
- Input Controls
  - Which also allows 'what if' analysis
- Server Side Ranking and Sampling
- Custom sorts
- Query Stripping (for OLAP universes)
  - Improved performance by automatically removing unused objects
- Supports non-additive measures
- Prompts: Optional, default values, free/constrained
- Complex report filters
- Improved client-side ranking
- Improved alerters
- More 'function' support (e.g. interpolation)

# Detailed Examples: Track Data Changes



Category	SKU desc	Sales revenue	Margin	Profit %
Belts,bags,wallets	Alaska Satin Belt	\$12,344	\$3,795	30.74
	Belt Buckle	\$9,819	\$761	7.75
	Business Travel Bag	\$4,780	\$1,709	35.76
	Crocodile Wallet	\$32,700	\$11,270	34.46
	<del>Large Sports Bag</del>	<del>\$62,398</del>	<del>\$25,199</del>	<del>40.38</del>
	Patchwork Leather Belt	\$2,414	<del>\$-813</del>	-33.68
	<b>Sports Bag</b>	<b>\$62,398</b>	<b>\$25,199</b>	<b>40.38</b>
	Suede Belt with Heart Shaped Buckle	\$3,755	\$1,512	40.27
	<del>Velvet Bag</del>	<del>\$5,163</del>	<del>\$1,848</del>	<del>35.8</del>
	Velvet Purse	\$2,828	\$845	29.89
Belts,bags,wallets	Sum:	\$136,202	\$46,127	33.87
Category	SKU desc	Sales revenue	Margin	Profit %
Hats,gloves,scarves	Chenille Astro Hat	\$1,762	\$815	46.25
	Cloud Patterned Viscose Scarf	\$18,143	\$8,227	45.34
	Fake Leopard Skin Gloves with Lurex Trim	\$312	\$139	44.36
	Jacquard Scarf	\$1,966	<del>\$-407</del>	-20.72
	Leaf and Flower Patterned Viscose Scarf	\$1,132	<del>\$-376</del>	-33.21
	Leather Gloves	\$1,684	\$603	35.78
	<b>Leather Gloves</b>	<b>\$2,205</b>	<b>\$831</b>	<b>37.7</b>
	Patchwork Flower Patterned Viscose Scarf	\$1,973	<del>\$-412</del>	-20.88
	Patchwork Velvet Scarf	\$4,408	\$2,036	46.19
Polka dot Viscose Scarf	\$5,323	\$2,818	52.94	

Row no longer exists in database

New row in database

Values in database have changed

# Detailed Examples: Report-to-Report Linking



**Edit Hyperlink**

Link to document  
Link to web page

Name: Customer Information by Country Create hyperlink

Hyperlink properties:

- Link to document instance
- Target area within the document
  - Report name
  - Report part: Click Select... and then right click report part

Document prompts:

Enter Country of...: =[Country]

Enter Service: Use document default

Customize the look and behavior of the hyperlink:

Document output: Default (user preference setting)

Target window: New window

Tooltip:

Link to document instance: Most recent

Target area within the document

- Report name
- Report part:

Options for Target area within the document:

- Most recent
- Most recent - current user
- Most recent - matching prompt values

Target area within the document

- Report name
- Report part: Click Select... and then right click report part

Display report part only

Name]

- Select variable
- Build formula
- Use document default
- Prompt user at runtime

# Detailed Examples: Report-to-URL Linking



## ■ Report to URL Linking

**Create Hyperlink**

Enter the URL below, then click Parse to extract its parameters.

`http://cqjavaweb.product.businessobjects.com/cqweb/main?command=GenerateMainFrame&service=CQ&schema=prod&contextid=ADAPT&entityDefName=Fix_Request&entityID=ADAPT00388598`

Main:  
URI

Customize URL parameters:

command	<input type="text" value="GenerateMainFrame"/>	▼
service	<input type="text" value="CQ"/>	▼
schema	<input type="text" value="prod"/>	▼
contextid	<input type="text" value="ADAPT"/>	▼
entityDefName	<input type="text" value="Fix_Request"/>	▼

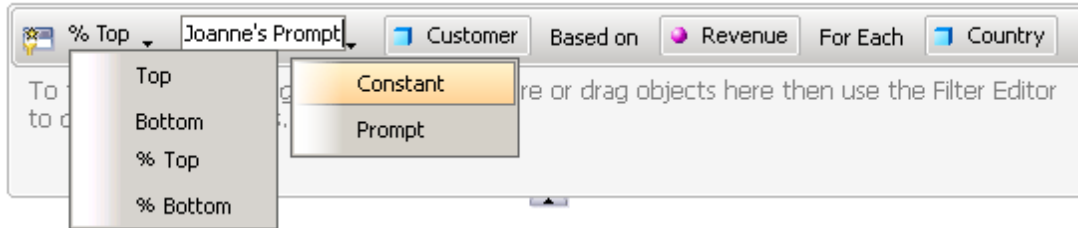
Customize the look and behavior of the hyperlink:

Cell content	<input type="text" value="=[FR Id]"/>	▼
Tooltip	<input type="text"/>	▼
Target Window	<input type="text" value="New Window"/>	▼

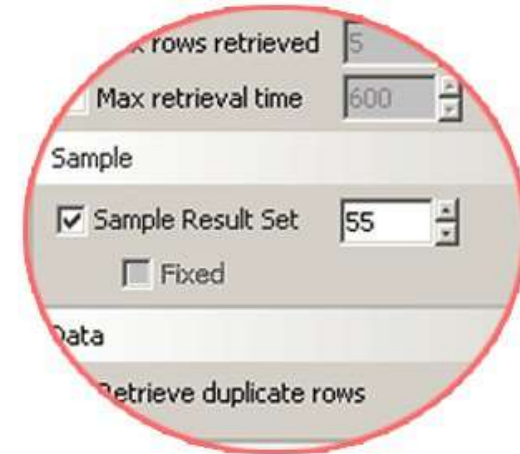
More Information

Type or paste a URL, then extract its parameters. Specify data for the parameters, as well as the hyperlink text and behavior.

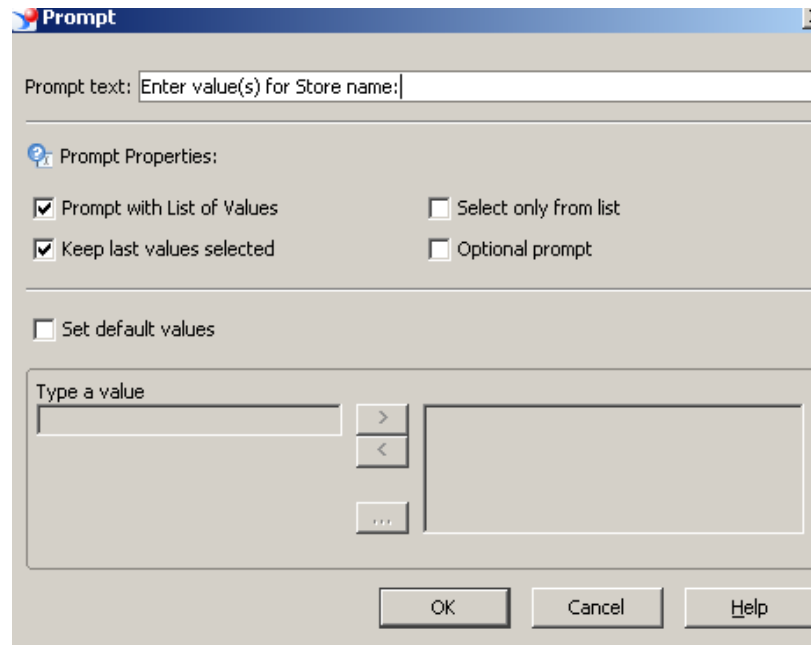
# Detailed Examples: Server-side Ranking and Prompts



- Server side ranking



- Server side sampling



- Prompts: Optional, default values, free/constrained



# Detailed Examples: Trust Universe Metadata + Data Lineage via MDM



**Data Summary**

Print

Universe: eFashion  
 Last execution time: 2 s.  
 Nb of rows: 19653

**Objects**

- Query 1**
  - Category: Each category contains the individual SKU codes (and product descriptions).
  - City: City located.
  - Lines: Product line. Each line contains a set of categories.
  - Month: Month number in year, 1-12.
  - Quarter: Quarter number: Q1, Q2, Q3, Q4.
  - SKU desc: Stock Keeping Unit description (SKU). Lowest level of product description. Each product comes in several different colors.
  - State: State located.
  - Store name: Name of store.
  - Year: Year 1999 - 2001.
  - Margin: Margin \$ = Revenue - Cost of sales
  - Quantity sold: Quantity sold - number of SKU sold
  - Sales revenue: Sales revenue \$ - \$ revenue of SKU sold
- Document Variables**
  - % change in Margin: =0
  - Profit %:  $=\frac{[\text{Margin}]}{[\text{Sales revenue}]}*100$
  - Profit% based upon what if % change in Margin:  $=\text{If } ([\% \text{ change in Margin}] = 0) \text{ Then } [\text{Margin}] \text{ Else } ( ([\text{Margin in}] * (1 + [\% \text{ change in Margin}] / 100) ) ) / [\text{Sales revenue}] * 100$
- Formulas**

**Document Structure and Filters**

Filter Remove Format

- Sales and Profit Analysis for US
  - Query 1
    - AND City In List prompt("Enter value(s) for City:")
  - Sales and Profit Summary showing Input Control and Fold/Unfold
    - Page Header
      - Cell: ="Sales and Profit Summary"
    - Page Body
      - Vertical Stacked: Sales Revenue by lines
      - Horizontal Grouped: Top 5 Lines
      - Vertical Stacked: Sales Revenue by lines (1)
      - Horizontal Grouped: Top 5 Stores
    - Section State
      - Section Cell: State
      - Cell: ="Revenue"
      - Cell: Sales revenue
      - Cell: ="Profit %"
      - Cell: Profit %
    - Section Lines
      - Section Cell: Lines
    - Vertical Table: Detail Table
      - Month In List 5;6;7;8;9
      - AND Store name In List e-Fashion New York 5th
      - Cell: Profit %
      - Cell: ="Profit %"
      - Cell: Sales revenue
      - Cell: ="Revenue"
  - Page Footer
  - What if analysis

Background

Benefits of upgrading to Web Intelligence

Desktop Intelligence feature coverage in Web Intelligence

Steps to upgrade to Web Intelligence

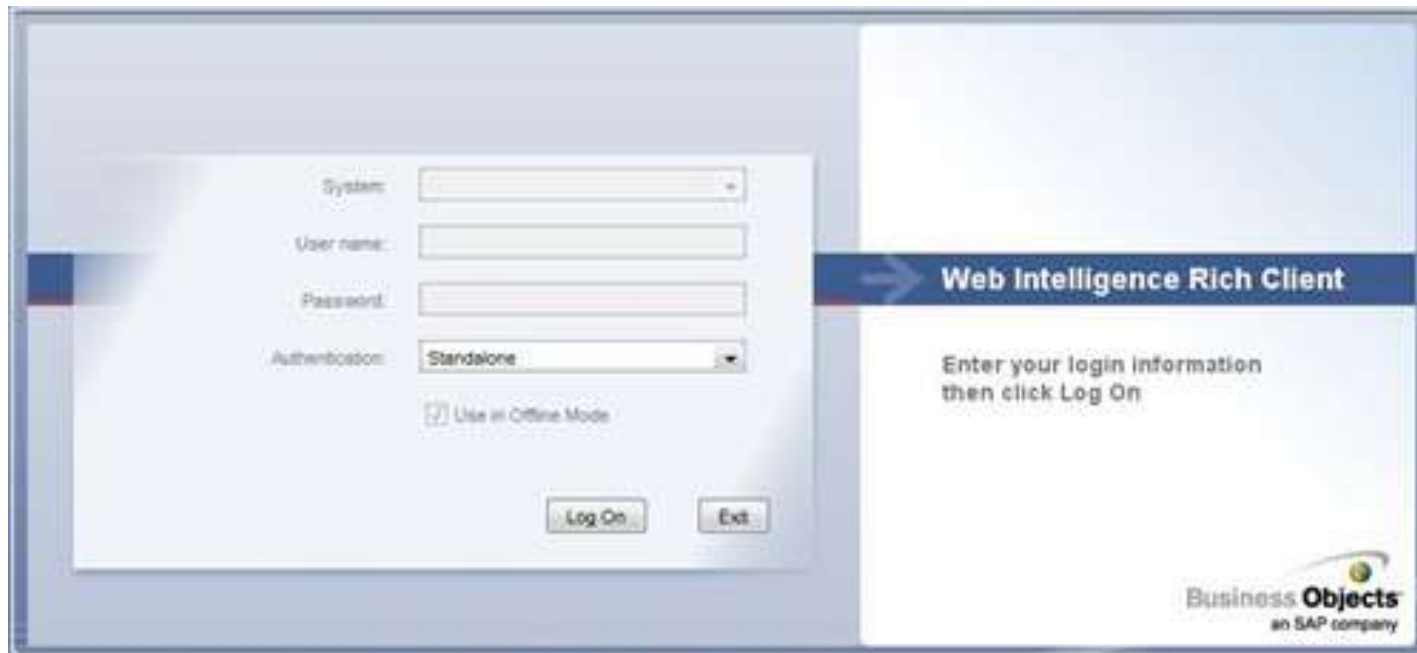
Next steps

# Biggest Desktop Intelligence feature in Web Intelligence...



Web Intelligence Rich Client provides the best of both worlds

- Desktop application
  - Offline analysis capabilities
  - Analyze and merge in personal data (Excel)
  - Much “snappier” interface
- Plus it delivers all of the key Web Intelligence features we discussed earlier



# Key Desktop Intelligence features in Web Intelligence



**Synchronized Data Providers**

**NoFilter() function**

**Multicube() function**

**Server Value function**

**Edit SQL**

**Custom & Personal Data Providers**

**Embedded images**

**Data Ranking Support (Top N)**

**Series Charts**

**Horizontal and Vertical  
Fold/Unfold**

**Offline Capability**

**Show/Hide**

**Complex Block Filters**

**Query on Query**

**Find within a Universe**

**Stored Procedures**

**Multiple level breaks**

**Custom function**

# Web Intelligence 4.0 features for Desktop Intelligence users



## Power users

- Show/Hide report objects to improve story flows
- Data manager enables users to manage queries and data
- Charting features (layout, overlapping) cover majority of old DeskI chart capabilities

## Interactive Consumers

- Improve on-report interactivity with Fold/Unfold on sections, horizontal and vertical breaks

## Information Consumers

- Automatically fit document content to n printed page(s)

- Provide a range of features that bring impact across all user types
- Enable the conversion of more Desktop Intelligence users and content

## Planned in future releases of Web Intelligence

- Freehand SQL
- Custom grouping
- User-defined hierarchies
- Split-canvas
- Templates, personal lists, personal variables (via planned shared objects feature)
- Excel data provider on server-side

## Unplanned features

- Visual Basic data provider (Workaround: create a custom data provider)
- XML data provider
- Multiple VBA macros (Workaround: use platform scheduling or extension points)
- Complex filters
- Value-based breaks

Background

Benefits of upgrading to Web Intelligence

Desktop Intelligence feature coverage in Web Intelligence

Steps to upgrade to Web Intelligence

Next steps

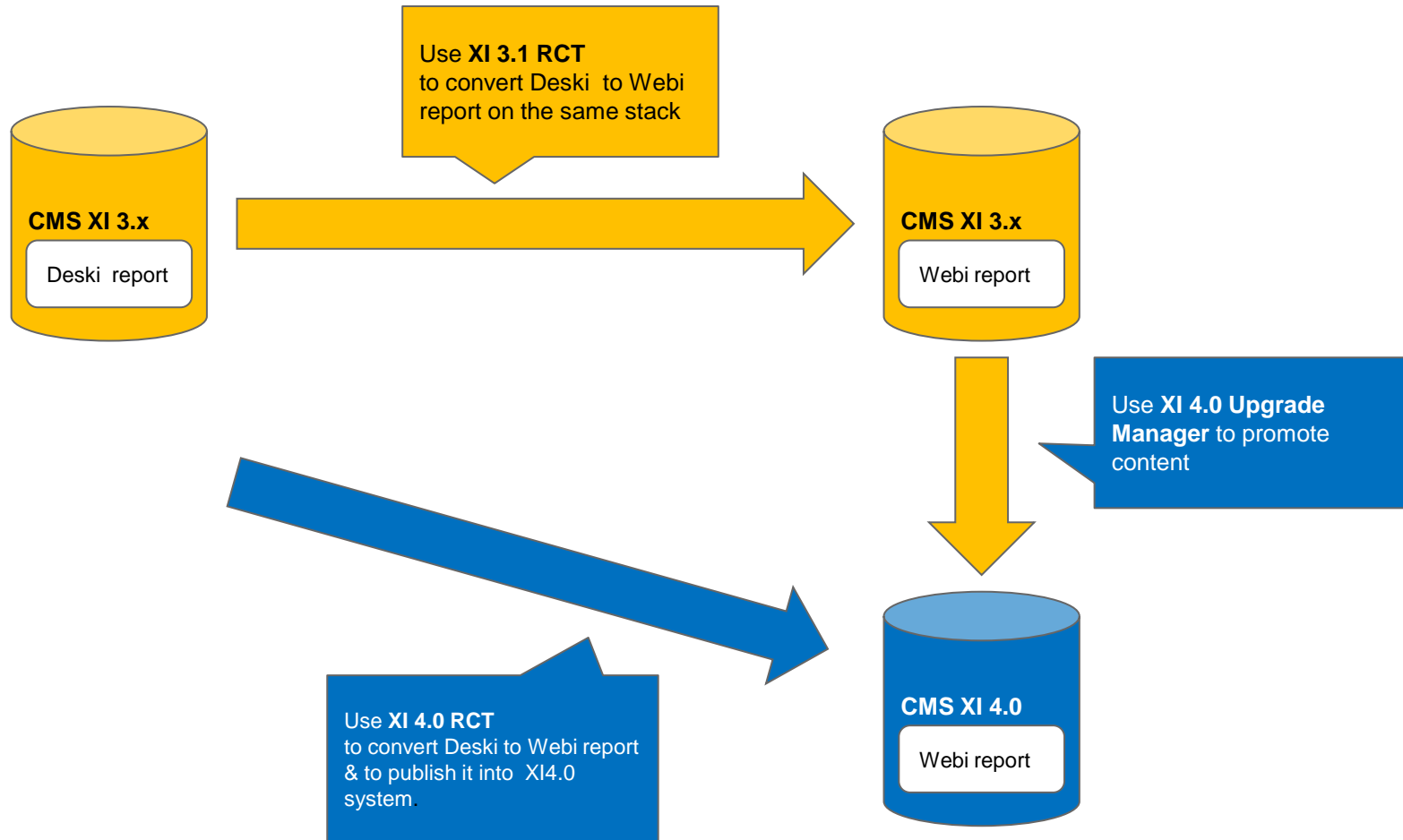


1. Internal usage review of the existing .rep files in the organization.
  - Consider archiving any that haven't been used or accessed in a long time.
  - Determine the most important reports to upgrade.
2. Education
  - Inform Desktop Intelligence users of the intent to upgrade to Web Intelligence
  - Begin training Desktop Intelligence on Web Intelligence usage
  - Knowledge Accelerator provides an e-learning solution to facilitate user training
3. Deploy Web Intelligence
  - Have Desktop Intelligence users begin using Web Intelligence for all NEW reports
4. Begin upgrade of reports, starting with most important. There are two upgrade paths...



# Steps to upgrade to Web Intelligence

## Upgrade paths



NOTE: We recommend that you always keep the original, unconverted file as there is no way to undo the conversion.

# Steps to upgrade to Web Intelligence Report Conversion Tool 4.0



RCT 4.0 works differently compared to previous versions since it connects to pre-4.0 system (as a source) and a BI 4.0 system (as the target)

Overview of the process:

- [Launch 4.0 RCT from the start menu]
- Login to XI R2 or XI 3.1.x
- Login to BI 4.0
- Select the DeskI document(s) intended for conversion
- Select other options as needed
- Start the conversion process
- On success, view results, review audit report (optional)
- Publish the newly converted WebI document(s) to the BI 4.0 CMS

# Steps to upgrade to Web Intelligence

## Login screen



Source

System: 10.193.5.72

User: administrator

Password: [masked]

Authentication: Enterprise

Destination

System: 10.193.5.163

User: administrator

Password: [masked]

Authentication: Enterprise

OK Cancel Help

Available languages...

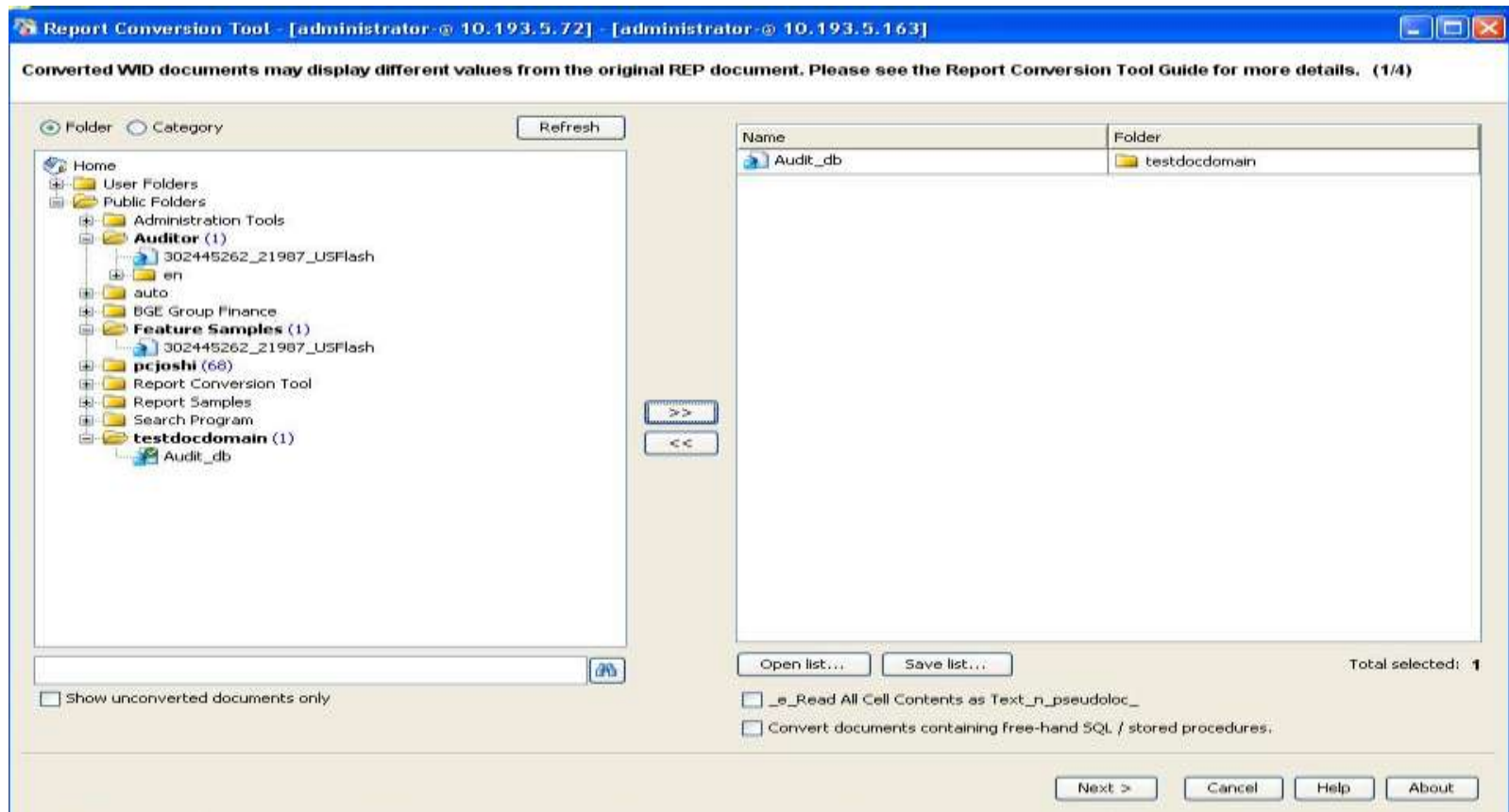
Source System for Desk1 documents, supported versions  
- XI R2  
- XI 3.1.X

BI 4.0 system

# Steps to upgrade to Web Intelligence Report Conversion Process



Select document(s) for conversion



# Steps to upgrade to Web Intelligence Report Conversion Process



Report Conversion Tool - [administrator-@ 10.193.5.72] - [administrator-@ 10.193.5.163]

Converted WID documents may display different values from the original REP document. Please see the Report Conversion Tool Guide for more details. (1/4)

Folder Category Refresh

Name	Folder
Audit_db	testdocdomain

Home  
User Folders  
Public Folders  
Adminis  
**Audito**  
auto  
BGE Gr  
**Featur**  
pcjosh  
Report  
Report  
Search  
testdo  
Aud

### Converting

Name	Current Status
Audit_db	Converting

1 / 1

Cancel

Show unconverted documents only

Open list... Save list...

Total selected: 1

\_e\_Read All Cell Contents as Text\_n\_pseudoloc\_  
 Convert documents containing free-hand SQL / stored procedures.

# Steps to upgrade to Web Intelligence Report Conversion Result and Comparison



Report Conversion Tool - [administrator-@ 10.193.5.72] - [administrator-@ 10.193.5.163]

**Save Conversion Results in Audit Database (2/4)**

Conversion Results

Fully Converted	Partially Converted	Not Converted
<b>1 (100.0 %)</b>	<b>0 (0.0 %)</b>	<b>0 (0.0 %)</b>

Compare fully converted documents

# Steps to upgrade to Web Intelligence Auditing in BI 4.0



- Audit reports are available

Audit Settings

Save conversion results in audit database

Select the audit connection to use to save conversion results:  Refresh

Delete all rows of the audit table before inserting new rows

Keep previous rows in audit table

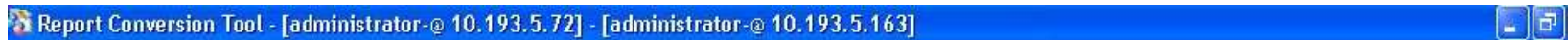
You can enter a comment that will be inserted in the Audit table for each row:

< Previous    Next >    Cancel    Help    About

# Steps to upgrade to Web Intelligence Publishing document to BI 4.0



- Publish converted documents to BI 4.0 CMS
  - Document publishing is considered partial if a universe is not associated with it in the XI 4.0 CMS
    - Open and view is still possible
    - Refresh is not possible (therefore publishing is partial)
  - A variety of options are available while publishing to CMS (Change target name of document, change target folder, change target category) etc



Select the converted documents to publish. You can rename documents and change the publication folder and category. (3/4)

Conversion Results

Fully converted	Partially Converted	Not Converted	Open Audit Report...
1 (100.0 %)	0 (0.0 %)	0 (0.0 %)	

Select the documents to publish. Right-click to display the actions menu.

<input type="checkbox"/>			Target Name	Source Name	Target Folder	Target Categories
<input type="checkbox"/>			Audit_db	Audit_db	testdocdomain	



Background

Benefits of upgrading to Web Intelligence

Desktop Intelligence feature coverage in Web Intelligence

Steps to upgrade to Web Intelligence

Next steps

# What should you do next?



Decide if moving to Web Intelligence makes sense

- Read [this whitepaper](#) for more information about the benefits of Web Intelligence.
- <http://www.sdn.sap.com/irj/boc/webi?rid=/library/uuid/b0caa27d-13f2-2c10-02aa-fa464185ca66>

Work with the customer to begin planning the move to Web Intelligence

- [This whitepaper](#) explains how to plan the upgrade from Desktop Intelligence to Web Intelligence.
- <http://www.sdn.sap.com/irj/scn/index?rid=/library/uuid/40eb2b57-8f0d-2d10-69b5-b1a52ba4b5e3>

Collaboration Workspace: <https://cw.sdn.sap.com/cw/community/beta/deski2webiconversion>

Consider licensing options

- We strongly recommend that customers migrate to the BI package as part of their move to Web Intelligence.
- We want to provide as smooth a transition as possible to our customers and are offering a license upgrade from Desktop Intelligence to the considerably more feature-rich Web Intelligence

End of life of Desktop Intelligence announced.

Desktop Intelligence will not be shipped with 4.0.

Will be maintained until 2015 (mainstream) and 2017 (priority one)

Web Intelligence is the successor to Desktop Intelligence.

Web Intelligence provides the vast majority of Desktop Intelligence features.

Web Intelligence provides much more value and capabilities than Desktop Intelligence.

Conversion tools are available to help you move to Web Intelligence.

# APPENDIX: Upgrade manager



- Optional Deskl plugin
- Determines report dependencies and exports them to the CMS
- Overview of the process
  - Choose Deskl document(s) for conversion
  - Choose “Export this object and its dependencies” – if you wish to bring forward all the Deskl dependencies before you start using RCT.
  - Summary screen is displayed, before the upgrade actually starts
  - Though the Deskl document is selected in the upgrade workflow, it is used only to compute dependencies (the Deskl document is not converted)

# Upgrade Manager plug-in for Desk

## Step 1



**Upgrade Manager**

### Log On

Select the existing environments that Upgrade Manager will export the content from and to.

Welcome  
**Log On**  
Object Selection  
Parameters  
Summary  
\_e\_Export\_n\_pseudoloc\_  
Finish

Upgrade Scenario:

Source

CMS Name:

User Name:

Password:

Authentication:

Destination

CMS Name:

User Name:

Password:

Authentication:

# Upgrade Manager plug-in for Desk

## Step 2



**Upgrade Manager**

**Object Selection**

Select objects and files to copy to the destination system, and upgrade them on the destination system. The source system is unmodified.

**Source:** 10.193.5.72 (XI 3.x)  
**Destination:** bngtdwin156 (XI 4.0)

Welcome  
Log On  
**Object Selection**  
Parameters  
Summary  
\_e\_Export\_n\_pseudoloc\_  
Finish

Object Type  Content

Apply to selected objects

- \_e\_Export this object and its dependencies\_n\_pseudoloc\_
- \_e\_Export this object\_n\_pseudoloc\_
- \_e\_Export this object only if it is depended on\_n\_pseudoloc\_

Applications  
 Calendars  
 Corporate Categories  
 Custom Access Levels  
 Events  
 Folders and Objects  
     Administration Tools  
     Auditor  
     auto  
     BGE Group Finance  
     Feature Samples  
     pcjoshi  
     Report Conversion Tool  
     Report Samples  
     Search Program  
     testdocdomain  
 Profiles  
 QaaWS Objects  
 Remote Connections and Replication jobs  
 Repository Objects  
 Server Groups  
 Universes  
 Users and User Groups

# Upgrade Manager plug-in for DeskI

## Step 3



**Upgrade Manager**

**Summary**

\_e\_Upgrade Manager will now export the following objects. \_n\_pseudoloc\_ You have the option to exclude objects from the upgrade by unchecking them.

**Source:** 10.193.5.72 (XI 3.x)  
**Destination:** bngtdwin156 (XI 4.0)

Welcome  
Log On  
Object Selection  
Parameters  
**Summary**  
\_e\_Export\_n\_pseudoloc\_  
Finish

Object Type	Is Dependency
<input checked="" type="checkbox"/> Folders and Objects (3 objects)	
<input checked="" type="checkbox"/> Folder (2 objects)	
<input checked="" type="checkbox"/> FullClient (1 objects)	
<input checked="" type="checkbox"/> Other Application Objects (5 objects)	
<input checked="" type="checkbox"/> Application Folder	Yes
<input checked="" type="checkbox"/> club	Yes
<input checked="" type="checkbox"/> Connections	Yes
<input checked="" type="checkbox"/> db_richa	Yes
<input checked="" type="checkbox"/> Root Folder 95	Yes
<input checked="" type="checkbox"/> Universes (3 objects)	
<input checked="" type="checkbox"/> Island Resorts Marketing	Yes
<input checked="" type="checkbox"/> richa_db	Yes
<input checked="" type="checkbox"/> Universes	Yes

Filter by: All Objects [v] Upgrade Options

Help Back Next Start Cancel



# Upgrade Manager plug-in for Deski

## Step 4



Upgrade Manager

\_e\_Export\_n\_pseudoloc\_

Source: 10.193.5.72 (XI 3.x)  
Destination: bngtdwin156 (XI 4.0)

- ✓ Preparing objects 11 of 11 objects attempted. 0 failed.
- ✓ Updating objects 11 of 11 objects attempted. 0 failed. 0 new objects created. **1 objects** excluded.
- ✓ Committing objects 10 of 10 objects attempted. 0 failed.
- ✓ Updating committed objects Objects updated.

**Deski Document, not upgraded**

General Info | Object L...

Step "Preparing objects" started.  
Step finished.  
11 of 11 objects attempted. 0 failed.  
Step "Updating objects" started.  
Step finished.  
11 of 11 objects attempted. 0 failed. 0 new objects created. 1 objects excluded.  
Step "Committing objects" started.  
Step finished.  
10 of 10 objects attempted. 0 failed.  
Step "Updating committed objects" started.  
Step finished.  
Objects updated.

Desktop Intelligence is no longer supported in XI 4.0. None of the Desktop intelligence document will be committed.

Step finished.  
Objects updated.

Upgrade

Upgrade completed.

OK

Help Back Next Close Cancel

# Upgrade Manager plug-in for Desk

## Step 5



**Upgrade Manager** Source: 10.193.5.72 (XI 3.x)  
Destination: bngtdwin156 (XI 4.0)

**\_e\_Export\_n\_pseudoloc\_**

Welcome  
Log On  
Object Selection  
Parameters  
Summary  
**\_e\_Export\_n\_pseudoloc\_**  
**Finish**

- ✓ Preparing objects 11 of 11 objects attempted. 0 failed.
- ✓ Updating objects 11 of 11 objects attempted. 0 failed. 0 new objects created. 1 objects excluded.
- ✓ Committing objects 10 of 10 objects attempted. 0 failed.
- ✓ Updating committed objects Objects updated.

General Info | Object Log

Filter by: None

- [-] Folders and Objects (3 objects succeeded with no warnings, 0 objects failed, 0 objects have warnings)
  - [+] Folder (2 objects succeeded with no warnings, 0 objects failed, 0 objects have warnings)
  - [+] FullClient (1 objects succeeded with no warnings, 0 objects failed, 0 objects have warnings)
- [-] Other Application Objects (5 objects succeeded with no warnings, 0 objects failed, 0 objects have warnings)
  - [-] Application Folder
    - club
    - Connections
    - db\_richa
    - Root Folder 95
- [-] Universes (1 objects succeeded with no warnings, 0 objects failed, 2 objects have warnings)
  - [-] Island Resorts Marketing
    - richa\_db
    - Universes

Help | Back | Next | Close | Cancel

# Copyright



© Copyright 2010 SAP AG. All rights reserved.

No part of this publication may be reproduced or transmitted in any form or for any purpose without the express permission of SAP AG. The information contained herein may be changed without prior notice.

Some software products marketed by SAP AG and its distributors contain proprietary software components of other software vendors.

Microsoft, Windows, Excel, Outlook, and PowerPoint are registered trademarks of Microsoft Corporation.

IBM, DB2, DB2 Universal Database, System i, System i5, System p, System p5, System x, System z, System z10, System z9, z10, z9, iSeries, pSeries, xSeries, zSeries, eServer, z/VM, z/OS, i5/OS, S/390, OS/390, OS/400, AS/400, S/390 Parallel Enterprise Server, PowerVM, Power Architecture, POWER6+, POWER6, POWER5+, POWER5, POWER, OpenPower, PowerPC, BatchPipes, BladeCenter, System Storage, GPFS, HACMP, RETAIN, DB2 Connect, RACF, Redbooks, OS/2, Parallel Sysplex, MVS/ESA, AIX, Intelligent Miner, WebSphere, Netfinity, Tivoli and Informix are trademarks or registered trademarks of IBM Corporation.

Linux is the registered trademark of Linus Torvalds in the U.S. and other countries.

Adobe, the Adobe logo, Acrobat, PostScript, and Reader are either trademarks or registered trademarks of Adobe Systems Incorporated in the United States and/or other countries.

Oracle is a registered trademark of Oracle Corporation.

UNIX, X/Open, OSF/1, and Motif are registered trademarks of the Open Group.

Citrix, ICA, Program Neighborhood, MetaFrame, WinFrame, VideoFrame, and MultiWin are trademarks or registered trademarks of Citrix Systems, Inc.

HTML, XML, XHTML and W3C are trademarks or registered trademarks of W3C®, World Wide Web Consortium, Massachusetts Institute of Technology.

Java is a registered trademark of Sun Microsystems, Inc.

JavaScript is a registered trademark of Sun Microsystems, Inc., used under license for technology invented and implemented by Netscape.

SAP, R/3, SAP NetWeaver, Duet, PartnerEdge, ByDesign, SAP Business ByDesign, and other SAP products and services mentioned herein as well as their respective logos are trademarks or registered trademarks of SAP AG in Germany and other countries.

Business Objects and the Business Objects logo, BusinessObjects, Crystal Reports, Crystal Decisions, Web Intelligence, Xcelsius, and other Business Objects products and services mentioned herein as well as their respective logos are trademarks or registered trademarks of Business Objects S.A. in the United States and in other countries. Business Objects is an SAP company.

All other product and service names mentioned are the trademarks of their respective companies. Data contained in this document serves informational purposes only. National product specifications may vary.

These materials are subject to change without notice. These materials are provided by SAP AG and its affiliated companies ("SAP Group") for informational purposes only, without representation or warranty of any kind, and SAP Group shall not be liable for errors or omissions with respect to the materials. The only warranties for SAP Group products and services are those that are set forth in the express warranty statements accompanying such products and services, if

any. Nothing herein should be construed as constituting an additional warranty.