




CUSHMAN &
WAKEFIELD

2018 MAIN STREET

NEW CROSSROADS REDEVELOPMENT FOR LEASE



Nestled in the heart of the Crossroads Arts District, the beautifully remodeled 2018 Main Street building will be Kansas City's newest urban core redevelopment addition. 2018 Main will serve as the exclusive headquarters to Crossroads Financial Management, a boutique, Kansas City based, wealth management firm. The first and second floors of the building offer available space for future office and retail tenants. The building will feature exclusive storefront entrances and customizable floor plans.

2018 Main is located directly along Kansas City's new streetcar line that runs from the River Market to Union Station. Tenants and customers will be able to easily access the building from all areas of the growing urban core. Area amenities within walking distance or streetcar rides from the building include the Power & Light Entertainment District, Kauffman Performing Arts Center, KC Convention Center, Sprint Center and world-class restaurants and art galleries.

- 1,708 SF retail or office space available on the first floor
 - » Exclusive storefronts for first floor tenants
- 5,165 SF, contiguous office space available on the second floor
 - » Space can be demised
- Customizable floor plans
- Tenant Improvement Allowances available
- Exterior signage available
- Lease rate of \$20.00 PSF net of utilities

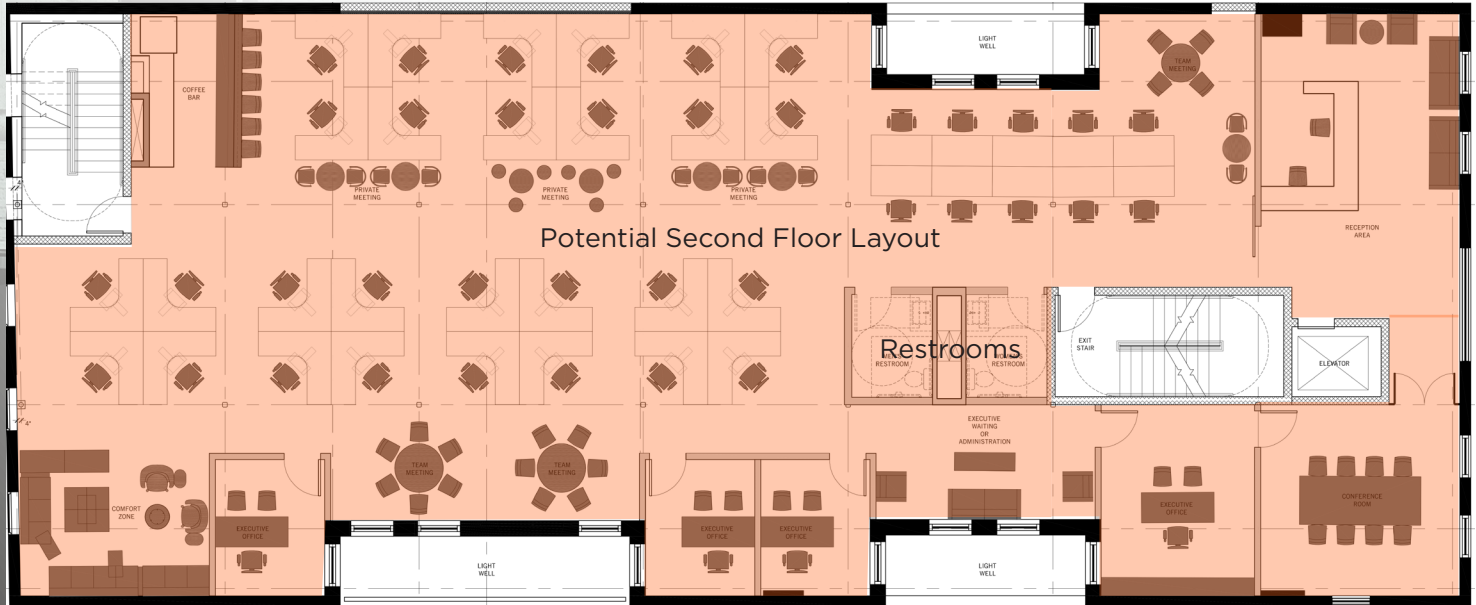
CROSSROADS ARTS DISTRICT

In addition to the new Kauffman Performing Arts Center, the Crossroads Arts District is home to some of the hippest galleries, best restaurants, growing millennial population and exciting residential opportunities at the epicenter of culture in Kansas City.

Thousands of visitors fill the area each First Friday of the month to be part of this thriving art community. Galleries and studios come alive and invite guests in to view the latest artwork that KC has to offer while the streets are filled with wonderful live performers.

The Crossroads are conveniently located in the heart of Downtown KC and within walking distance to the areas best amenities. Experience every thing the Crossroads Arts District has to offer!





The entire second floor is available and consists of 5,165 SF. The space features windows on all four sides and private bathrooms. The space is accessed by elevator or stairways located on the east and west sides. The space may be divided to accommodate smaller users and a tenant improvement allowance is available.



**LIVE.
WORK.
PLAY.**





For more information, please contact:

SUZANNE DIMMEL, CCIM | Director

+1 816 412 0271

suzanne.dimmel@cushwake.com

MIKE POSTEN | Director

+1 816 412 0269

mike.posten@cushwake.com

RJ TROWBRIDGE | Senior Associate

+1 816 412 0236

rj.trowbridge@cushwake.com

4600 Madison Avenue, Suite 800

Kansas City, MO 64112

Main +1 816 221 2200

Fax +1 816 842 2798

cushmanwakefield.com

