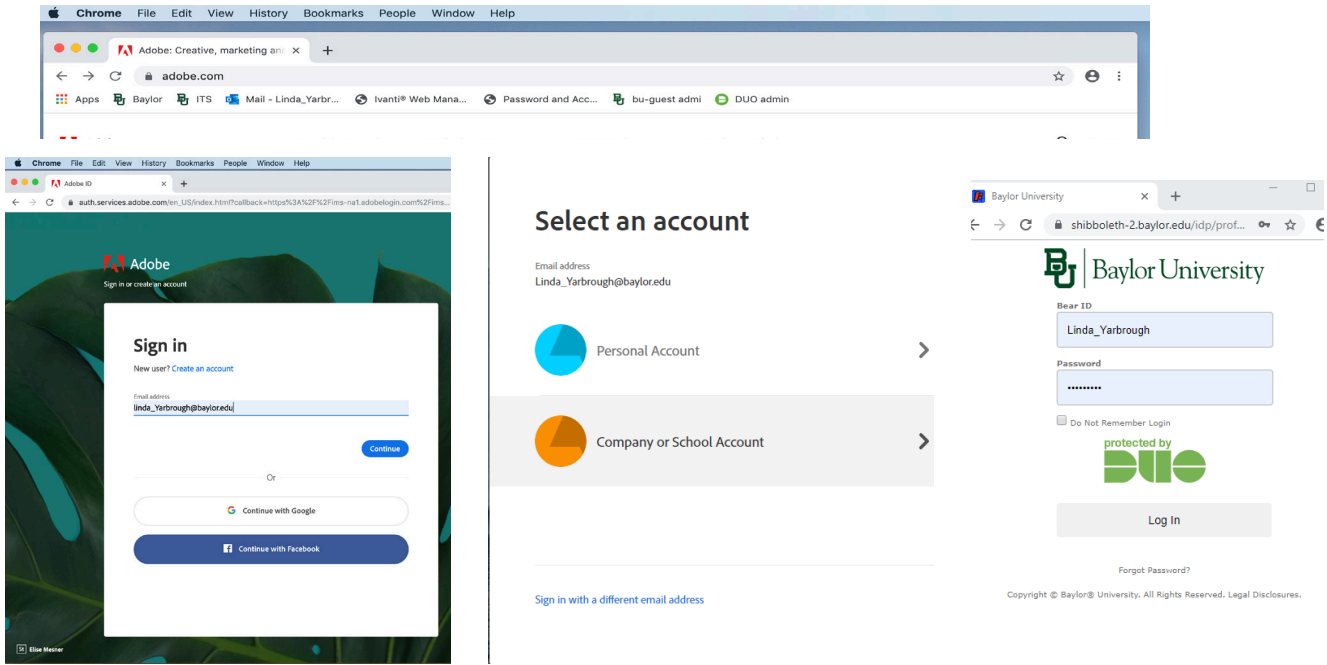
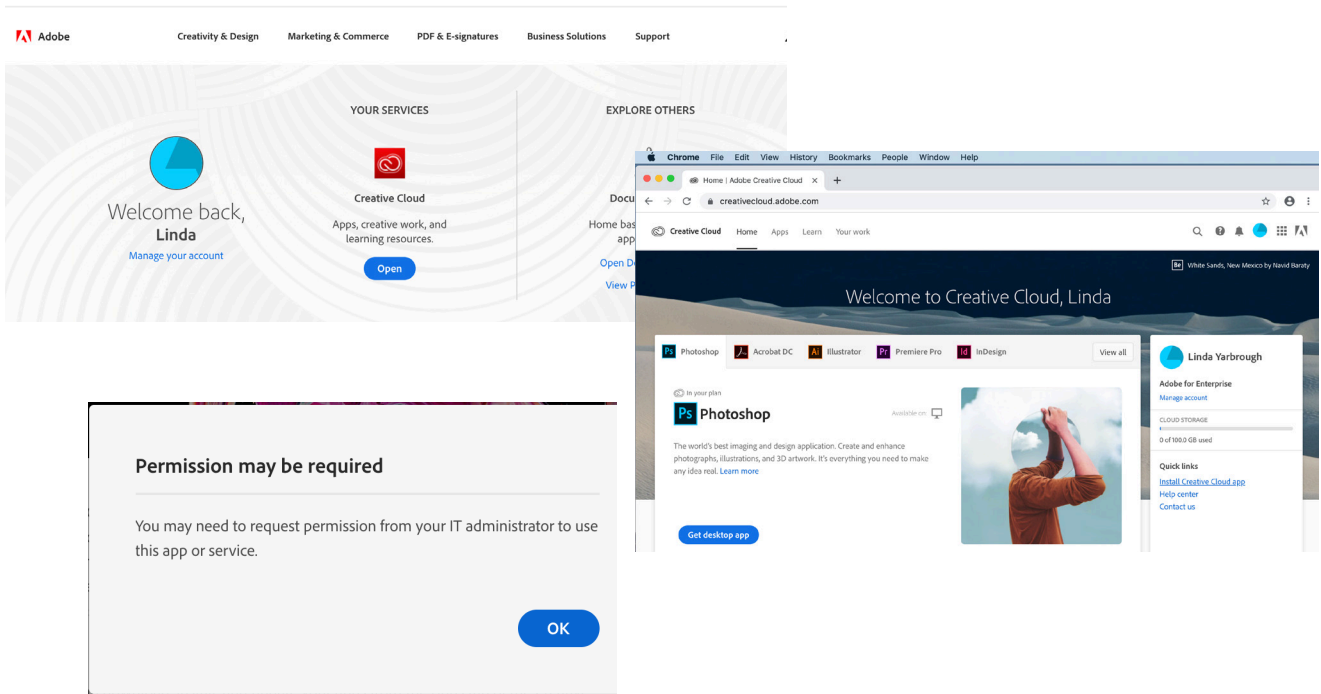


Installing Adobe Creative Cloud App for Faculty/Staff

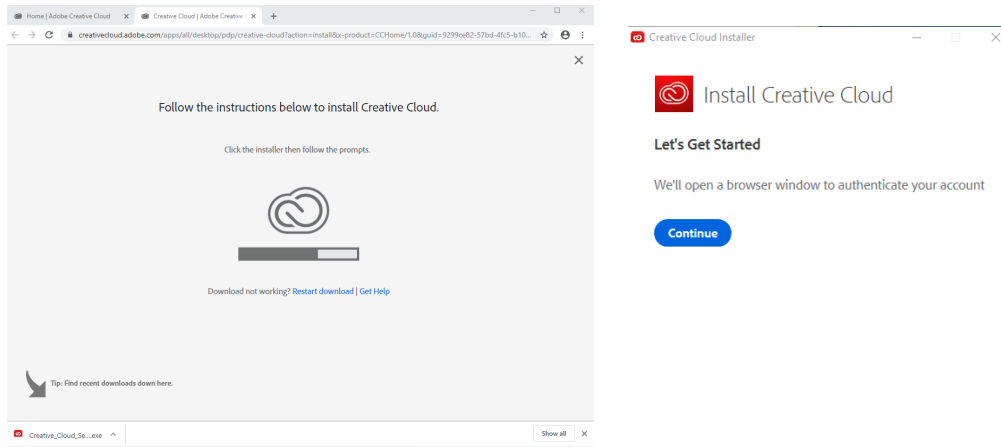
To install the Adobe Creative Cloud, open a web browser and go to Adobe.com and sign in with your Baylor email address and do the DUO confirmation.



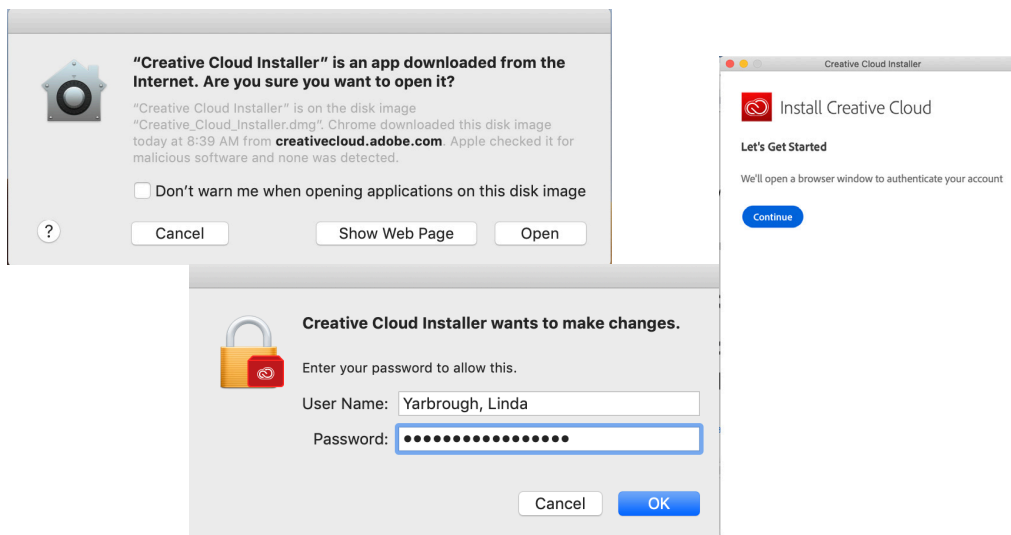
Click on the “Open” to open Creative Cloud. Click on the “Install Creative Cloud”. Click on the OK for Permission may be Required



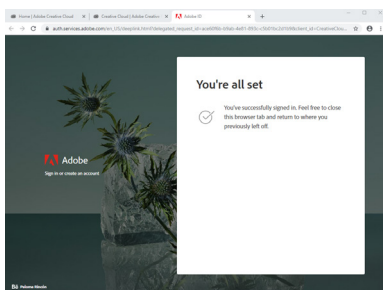
Find where your browser puts your downloads – on Chrome, it may be at the bottom of the browser – other browsers, you may need to go to your Downloads folder. Once the installer has downloaded, double click on the installer to start the install. You may have to agree or put in your password to start the install.



On a Mac you may see the following screens. You will want to double click to run the installer and click open on the warning. Log in and then you will see the Let's get started.



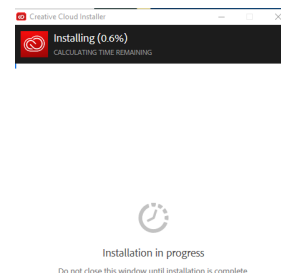
A web page will open saying you are all set (since you signed in earlier – if you did not sign in on your default browser, you may have to sign in and DUO Authenticate again). Then Creative Cloud App will start installing



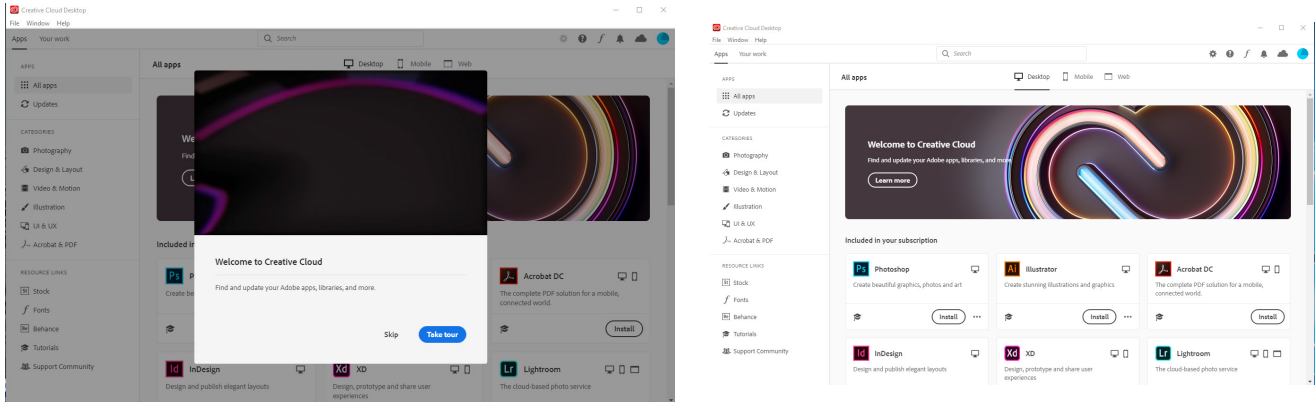
You're all set



You've successfully signed in. Feel free to close this browser tab and return to where you previously left off.



Once it installs you can take a tour or skip – then you will see the different Creative Cloud apps you can install



NOTE: If you do not see the Apps tab- Close the Creative Cloud App and do the following depending on your type of computer:

PC - in the search bar type c:\Program Files (x86)\Common Files\Adobe\OOBE\Configs

Mac - in Go>Go to Folder type /Library/Application Support/Adobe/OOBE/Configs

Delete the serviceconfig.xml file

Open the Creative Cloud app and go through login sequence again (if prompted)

When the Creative Cloud app is open on the left-hand side you will see:

Apps - shows all available apps (or in categories by types of apps) and will show “Install”, “Update”, or “Open”. Learn- training videos are available to watch at your convenience.

Resource Links on the side include:

- **Stocks** - high quality, royalty-free photos for your use (not all are included with our license)
- **Fonts** - will take you to Fonts that can be synced with computer. These are not available for the Student computer license only for a Faculty/Staff license.
- **Behance** - share your work or see the creativity from around the world.
- **Tutorials** - training videos are available to watch at your convenience.
- **Support Community** - online community support for Adobe questions.