

# Large Farm Equipment Retirement

# AUCTION

Saturday, May 30 – 9:30 a.m.

**LOCATION:** 4938 53rd St NE, Leeds, ND. **From Jct Hwy 2 & Hwy 30:** 10 miles South on Hwy 30, 1 mile West; **From Jct Hwy 19 & Hwy 30:** 9 miles North on Hwy 30, 3/4 mile West. Watch for signs!!



**AUCTIONEER'S NOTE:** Mark is the 3rd generation on the Harlow area farmstead and has decided to retire from actively farming and ranching. Lots of equipment listed, and there are sure to be many surprises found as Mark organizes for the sale. See you there!



### TRACTORS & ATTACHMENTS

1880 Hesston Tractor, 3pt, duals avail  
JD 4840 3 pt 3 hyd., rebuilt injector pump, new battery, 7498 hrs.  
JD 4010 Tractor  
1978 Versatile 950 Series 2 cab, duals, good rubber, 10k approx. hours  
1980 Versatile 555 Series 2 cab, duals, 10k approx. hours  
400 International Tractor w/F10 loader, was running when parked  
3pt 2/Bale Fork  
Farmhand loader, extra mounts  
10' Farmhand snow bucket  
Vermeer 3 pt blade  
Swanston 15 Bobcat Hyd pt post hole auger  
JD 3pt Post hole auger



### TRUCKS

1995 Kenworth 10sp 826000 miles  
1987 GMC 7000 w/contractors box, 105k  
1974 Chev C60, steel box, Agri Cover, 87k  
Red box truck with 1200 gal sprayer tank  
International Loadster 1600, mechanics special, frame broken above axle  
International w/wood box, not running  
GMC w/hay rack, not running



### TRAILERS

2005 Timpte 40' grain trailer, roll cover, new tarp  
620 PJ Trailers 7x20 Car trailer  
1991 7x20 TravelR Travelong gooseneck  
1971 5x16 Mile 4-Horse bumper hitch  
Triton snowmobile trailer w/enclosure  
Mark II snowmobile trailer  
Donahue  
Heavy 4 wheel running gear  
2 Wheel trailer  
Bale spears



### VEHICLES

1998 Ram 3500 Cummins 24 valve turbo diesel, dually, 144k w/The Boss V-Plow  
1993 Chrysler LHS 219k  
1986 F250 Ext Cab, 460 gas 4x4 longbox, 108k  
1974 Cheyenne 10 .5 ton, 4x4, service truck, 148k  
1970's Ford pickup  
Old Ford truck, not running  
2 Chev Corvair shells, 4dr and 2dr



### COMBINES & HEADERS

JD 9600 Combine, 4597 hrs  
1982 IH 1460 Axial Flow Combine w/1020 Flex head  
International 914 pull behind Combine  
2) Int 1015 Headers w/Melroe Westward 388 pickup  
Int 820 20' Flex head w/ Keho aerial  
Int 810 24' straight head  
810 13' Sund pickup  
251 Flex Header  
1020 Int Header  
JD 930 30' Header  
JD header for parts  
Header trailer



### EQUIPMENT

Rowse 9' Mower  
JD37 9' Mower  
9 Wheel finger rake  
400 Versatile 15' Hydrostatic Swather, self propelled  
Vermeer 605F round baler  
Vermeer 605G round baler  
Rust Mfg Co Stack Mover 13x29  
Degelman Rock picker  
Morris Magnum II Cp731 37' Chisel Plow  
Morris Magnum II 725 Chisel Plow  
Int 800 Auto reset plow  
JD 16' Chisel Plow  
18' Vibrasite Cultivator  
Wilrich Field cultivator w/Gandy box



Krause 22' Disc  
Case Off-set Disc  
14' Disc  
16' Disc  
NH Grinder/Mixer  
Bear Cat 1250 Grinder/Mixer  
1000 bu Lowry Hopper  
Int 7200 Hoe Drill, 2-14' drills  
Cole 30 Row Planter  
54' Gates Magnum Harrow  
5 Ton Fertilizer Spreader  
Fertilizer tender  
Manure spreader  
2) Bin aerators  
8'x80' Cenex auger w/swing auger  
Mayrath 6' Auger w/Honda motor  
Mayrath 12v drill fill auger  
6' Auger, not running  
Auger by pole barn  
McCormick Deering power source  
Stalk shredder  
Melroe 218 Spray Coupe  
Spray Coupe, not running  
F/S Mfg Sprayer, pull-type w/hand spray attachment  
Flexi-Coil sprayer, not running  
Pull-type Sprayer, not running  
2) Creep feeders  
Cattle Oiler  
3) 60 bu Pride-of-the-Farm Hog feeders  
Pickup stock box  
Concrete Cattle waterer, never used

### GUNS-BOWS & RELOADING EQUIPMENT

Carl Zeiss Diascope 85T FL spotting scope w/soft case  
Fred Bear SQ 32 Compound Bow  
Compound Bow  
Thompson Center 50 cal Muzzle Loader  
Grey Hawk 25387  
Thompson Center Muzzle Loader  
Browning Gold Hunter 3.5" 12GA Invector plus 28" barrel F01NP15325  
Remington Model 241 Semi-auto The Speedmaster 22 LR only 24539  
Remington Model 241 Semi-auto The Speedmaster 22 SR only 130971  
Marlin Stainless Model 60SS MM 98265H w/scope  
Remington Model 700 22-250 S6590685 w/Nikon Laser waterproof var. scope  
Winchester Model 47 22 SL or SR L1030407  
Ithaca Model 51 Featherlight 12 ga 3" 510100847  
Remington 30 Rem pump C29746  
Remington Model 700 338 Rem Ultra Mag S6392187 w/Nikon Monarch UCC variable scope  
Marlin 22 LR Only Model 60 Microgroove barrel 14417504  
3 Single shot rifles  
2 BB guns  
Shotgun reloading equipment  
4 Soft-shell gun cases  
1 Hard-shell 2pc gun case  
Zeiss 10x40B T\*P\* Binoculars, made in Germany 2654030  
Bushnell Falcon InstaFocus 7x35 Binoculars  
A large assortment of ammunition, 338; 22-250, etc.  
German sword

### HOUSEHOLD

Propane Turkey fryer/cooker  
Kenmore water softener  
Metal 3/4 size bed  
Full-size bed frame  
3 drawer dresser  
4 drawer dresser  
5 drawer chest of drawers  
3 drawer dresser w/mirror  
3 pc Dark Blonde bedroom set, full bed, dresser w/mirror and chest of drawers  
Sofa and 2 arm chairs  
Computer desk  
7 drawer desk  
Kenmore Washing Machine  
Large Sony TV  
Window Air conditioner  
Estate refrigerator  
Wood 3-tier plant stand  
Electric fire place  
Ceramic animal figurines: Deer, Elk, Horses  
Office chair  
Misc. glassware and household items

### ANTIQUES

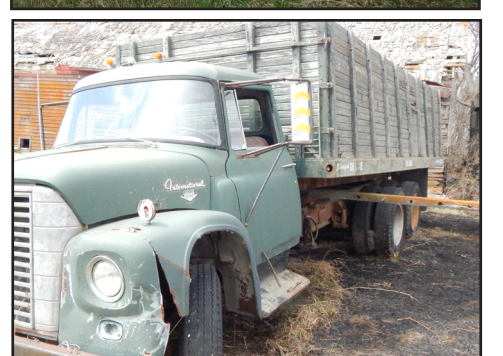
Many old fishing lures  
3 gal Redwing Crock, cracked  
4 Wood Duck decoys  
Potato digger  
Cast iron stock tank heater  
Cast Iron Drill  
2) DeLaval cream separator  
2) 4x8 M&M Service signs  
Whitaker Automotive Products metal cupboard  
Electric Wringer washer  
12 pl setting American Standard Stain less cutlery w/wood case  
Picnic Hamper  
Several cast iron meat grinders  
Various size milk bottles  
3 Red globe fire extinguishers  
Wood high chair  
Wood console radio  
Tabletop radio  
Sewing Machine cabinet  
Box of board games  
Counter top glass display case, cracked  
Old Rifle cartridge collection  
Wood bar height chair from Harlow Bar  
Mounted Canadian Goose  
Mounted Perch and Mounted Walleye  
2 Framed Budweiser prints "Custers Last Fight"  
Forge  
Road grader and horse drawn scraper  
Electric Train set w/grain bin  
Chamber pot and many other items

### TOOLS

Honda 3000 Generator  
Coop 180 AC Welder  
Wagner Paint Sprayer 9190  
Craftsman 900 Pressure Washer  
ATV Winch, NIB  
2) Gallagher Solar Fencers  
Swisher 22" String Trimmer  
Craftsman 22" String Trimmer  
Lawn Boy 21  
Delta Diamond tool box  
White pickup tool box  
200+ 6"x8' wood posts, treated, pointed  
Fencing supplies-insulator,etc  
Several piles T-posts  
Aluminum gates  
Various Cattle panels, 16' wire, pipe, bar  
Ratchet fence tighteners  
Propane tanks  
250 gal Fuel Tank  
100 gal Fuel Tank w/12v transfer pump  
Oxy/Acetylene Torch w/owned tanks  
Air tank  
Fimco ATV sprayer  
Red & White portable air compressor  
Coleman Powermate Blue Max pro series portable compressor w/Honda GX160 motor  
DeWalt 18v Circular Saw,  
DeWalt 18v 1/2' Impact  
DeWalt 18v Drill/Driver  
Hand saws  
Chain saw  
Rope  
Gustafson seed treater  
Baler belting, various widths  
6.5 Pacer pump, B&S motor  
GX160 Honda motor  
B&S Motor  
3) anvils, some tools  
Angle iron and storage rack  
Tire chains  
2) titan 18.R46 Tires  
Used pole barn tin  
4x8 sheets of plywood  
Rolling tool cabinets  
Snow fence  
Scrap Iron  
Misc. tools

### BOAT & MISC.

18' Snell Lakeboat, 140hp Johnson motor needs wiring work, Classic XL Spartan trailer  
Fishing Equipment  
Clay target thrower  
Duck decoys  
Coyote pelt  
Camping equipment, hunting equipment  
Coleman camp heater  
2) Ice augers, 1 Jiffy  
Snow shoes  
Heavy duty Swing set frame  
Skidoo sled  
16" Saddle and some tack  
Telescope



Owner: Mark Lysne, Harlow, ND

Westad Auction & Appraisal

4787 50th Ave NE, Maddock, ND 58348  
Denise Westad -701-351-1231- ND990, Clerk ND592  
Kaleb Westad -701-230-4037- ND1015  
Kyler Westad -701-381-2248- Certified Auctioneer  
Ken Richter Jr -701-889-2042- ND972  
www.westadauction.com

TERMS: Cash or approved check. Owners, clerks, auctioneers or their helpers are not responsible for accidents. Statements made on sale day by auctioneers and owners take precedence over any and all printed matter. The information given is believed to be true and correct to the best of the owner's knowledge. There are no guarantees expressed or implied. All sales will be considered final when awarded to the high bidder.

