



Updating Programmable HFL (HFT) Control Units

(Supersedes 12-032, dated December 21, 2012, to revise the information marked by the black bars)

REVISION SUMMARY

Under the subheading QUESTIONS ABOUT THE UPDATING EQUIPMENT OR THE INTERACTIVE NETWORK, the phone number for American Honda's Special Tools hotline was deleted, and new technical assistance contact information was added.

The procedures in this service bulletin are used and referenced in other service bulletins.

This bulletin describes the procedure to update the software in programmable HandsFreeLink (HFL) control units.

This bulletin consists of two procedures:

- Vehicles without Navigation, page 2.
- Vehicles with Navigation, page 9.

This service bulletin also describes these subjects:

- Required tools and equipment
- Updating tips and precautions
- Who to contact for questions or problems when using Acura-supplied updating equipment, including software and tools

NOTE: Whenever you install a new HFL control unit, check that it has the latest software, and update it if needed.

WARRANTY CLAIM INFORMATION

Refer to the specific service bulletin for the symptom you are repairing.

QUESTIONS ABOUT THE UPDATING EQUIPMENT OR THE INTERACTIVE NETWORK

For questions about the software application, refer to the job aid titled *Acura HFL (HFT) Control Unit Update User's Guide*, available on ISIS.

For cellular phone compatibility listings or required settings, call JCI Technical Support at **888-528-7876**.

For HFL PC software installation or Bluetooth pairing issues, call the the iN Support Center at **800-245-4343**.

For HFL module reprogramming (vehicle side) and general troubleshooting, call Tech Line at **800-228-7210**.

REQUIRED TOOLS AND EQUIPMENT

- A laptop PC, loaded with the newest version of the HDS software, and equipped with the minimum requirements:
 - Any version of Windows listed below:
 - Windows XP (32-bit), at least 512 MB RAM, and Service Pack 2
 - Windows Vista/7 (32-bit), at least 1 GB RAM
 - Windows 7, (64-bit), at least 2 GB RAM
 - 1 gigahertz (GHz) or faster 32-bit (x86) or 64-bit (x64) processor
 - At least 16 GB of available hard disk space (32-bit) or at least 20 GB hard disk space (64-bit; Windows 7 only)
 - *Windows Vista Only:* Support for DirectX 9 graphics with WDDM and at least 128 MB of graphics memory (32 MB for Home Basic)
 - *Windows 7 Only:* DirectX 9 Graphics device with WDDM 1.0 or higher driver
 - The Microsoft.NET Framework software application: Version 2.0 or later
- NOTE: This is available to download for free; go to microsoft.com or ask your system administrator for assistance.

- The latest version of the HDS software installed on this computer.
- A recognized Bluetooth radio device installed on this computer. If one is required, order P/N: CDWF8T016 from the Tool and Equipment Program (on iN, click on: **Service > Quick Links > Tool and Equipment Program**), or choose a commercially-available device from the list below.

Brand	Model #	OS*	32-bit	64-bit
Belkin ¹	F8T016	ALL	X	X
Cirago ²	BTA-3210	ALL	X	X
IO Gear ¹	GBU421	ALL	X	X
Rocketfish ¹	RF-MRBTAD	ALL	X	X
Targus ¹	ACB10	ALL	X	X

* Windows XP, Windows Vista, or Windows 7 Operating System

¹ Use Widcomm (Broadcom) Bluetooth drivers.

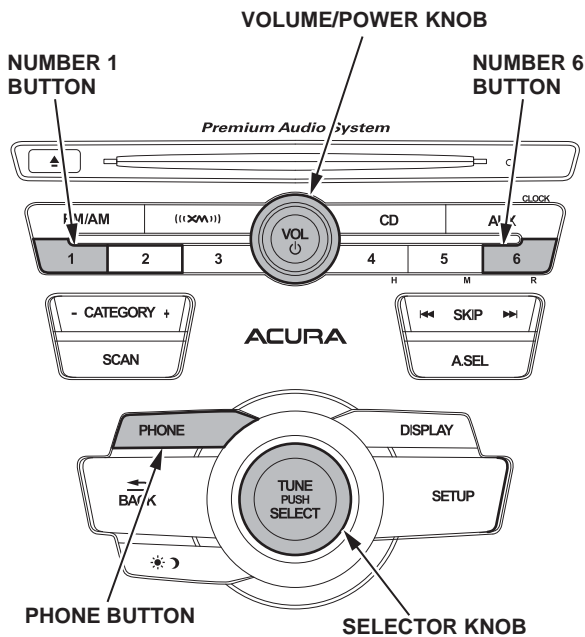
² Use Toshiba Bluetooth drivers.

HFL CONTROL UNIT UPDATE PROCEDURE

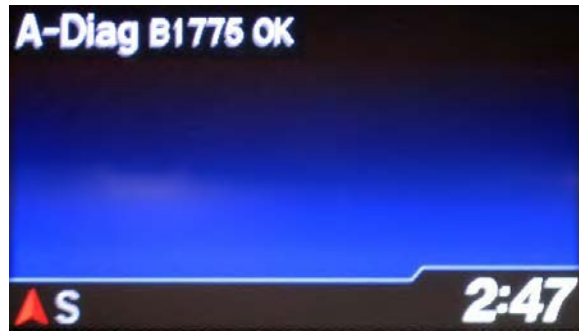
Vehicles without Navigation

NOTE: Failure to follow the procedures and precautions in this bulletin may damage the HFL control unit.

1. Connect a jumper battery to the vehicle and leave it connected during this entire procedure to maintain a steady voltage.
2. Press the engine start/stop button to select the vehicle ON mode.
3. Press and hold the audio preset No. 1 button, then press and hold the audio preset No. 6 button. Press and hold the Volume/Power knob. Release the buttons and the knob once the audio unit enters into the self-diagnosis mode and the "A-Diag DIAG" screen appears.



4. Press and hold the PHONE button for at least 5 seconds to enter the HFL diagnostic mode. One of the following screens appears: "A-Diag XXXXX OK" or "A-Diag ---."



- On the HDS laptop, double-click the HFL Control Unit Update icon to launch the Honda HFL (HFT) Control Unit Update Tool (HFL update tool).



NOTE: The HDS laptop must be connected to an AC outlet during the reflash process and must be within a distance of 21 feet to the vehicle. Do not allow the HDS laptop to go into sleep or hibernate mode during the reflash process. If this occurs, the Bluetooth connectivity between the HDS laptop and the vehicle's HFL system will be dropped, and the reflash process will be interrupted. It will then be necessary to restart the reflash procedure. See your laptop manufacturer's instructions or your system administrator for assistance to change these settings.

- Press the audio preset No. 2 button several times until the "A-diag UPDATE" screen appears on the i-MID.

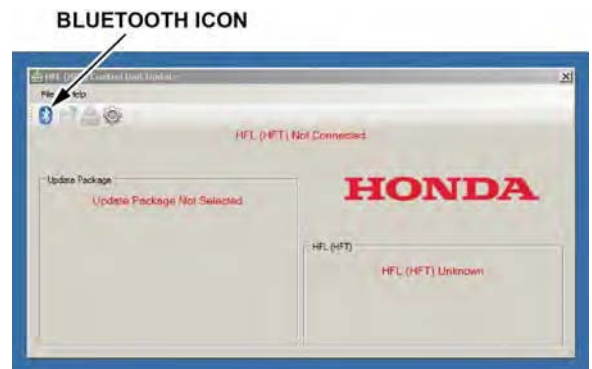


- Press the selector knob on the audio unit to change the HFL update screen. A four-digit PIN code appears. Write it down on a piece of paper or on the RO, and leave it in the vehicle.



NOTE: This PIN is required to complete the HFL update and to re-establish communication if the update process is interrupted. If this PIN is lost, forgotten, or otherwise misplaced, and an interruption to the reflash process occurs, the HFL control unit will remain stuck in reflash mode, and you will be unable to complete the update. If this happens, you must replace the HFL control unit.

- In the HFL update tool, click on the Bluetooth icon in the upper left-hand corner of the HFL Control Unit Update screen to prepare the HDS laptop for the pairing process with the vehicle's HFL control unit.

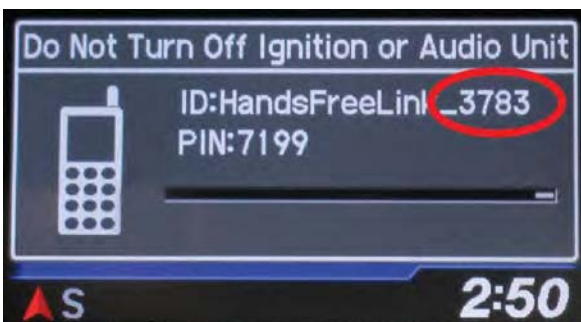


- In the HFL update tool, the "Pair with HFL" window pops up. Wait a few seconds for the display to show "All Detected Bluetooth Devices." If no devices are found after 30 seconds, click on **Refresh**.

NOTE: If the HFL control unit is unable to establish a Bluetooth connection with the HFL update tool after 5 minutes, it times out. If this occurs, reboot the HDS laptop, press the engine start/stop button to select the OFF mode, and go back to step 2.

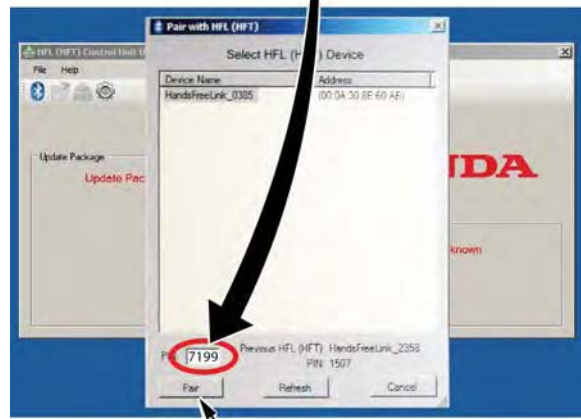
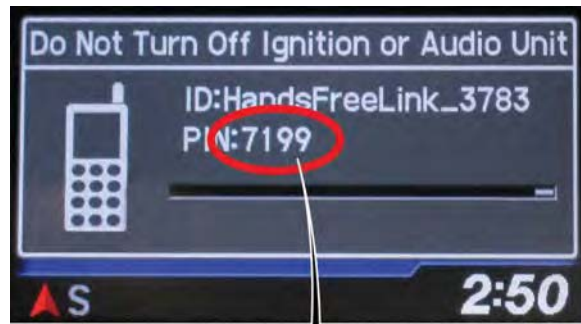


- In the HFL update tool, select the correct Bluetooth device (if more than one appears) that matches the HandsFreeLink ID code shown in the vehicle's display screen.



NOTE: There may be more than one Bluetooth device listed on the HFL update tool "Pair With HFL (HFT)" screen. Select the correct HFL ID from the list.

- In the HFL update tool, enter the four-digit PIN from the vehicle's display screen into the lower left-hand corner of the pop-up window. Click on **Pair** to begin the pairing process.



NOTE: Leave the PIN you wrote down in step 7 with the vehicle. The PIN is required to complete the HFL update and to re-establish communication if the update process is interrupted. If this PIN is lost, forgotten, or otherwise misplaced, the HFL control unit will be stuck in reflash mode, and you will be unable to complete the update. If this happens, you must replace the HFL control unit.

- Wait for the HFL update tool to complete the Bluetooth pairing process.

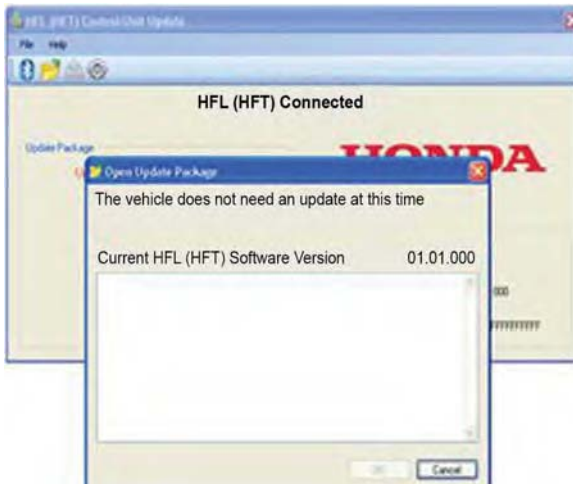


13. In the HFL update tool, the “Open Update Package” window pops up when the Bluetooth pairing process is complete. The HFL update tool automatically determines which version of the HFL software is present, and which updates are on the HDS laptop. Click **OK** to begin the HFL control unit reflash process.



Click “OK”

NOTE: If the HFL software is current and no update is required, the following notification pops up on the HDS laptop.

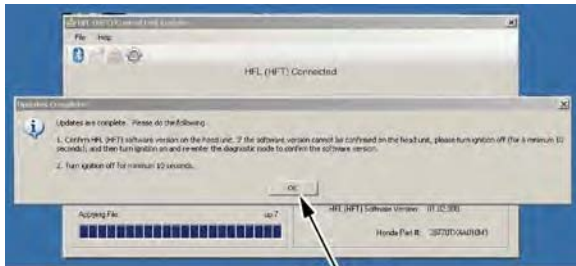
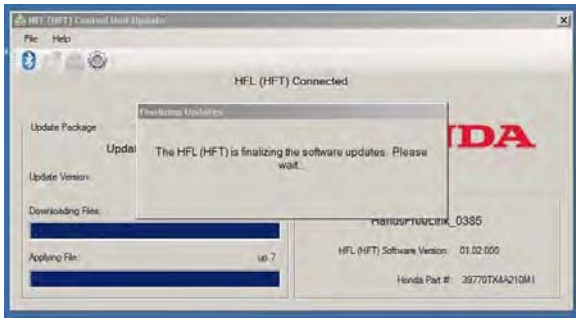


14. The HFL reflash process begins. Allow several minutes for the programming to complete. The blue bars indicate the programming status and progression.



NOTE: Do not press the engine start/stop button to select the OFF mode while the HDS laptop is transferring files to the HFL control unit. Doing so will damage the HFL control unit. If Bluetooth connectivity between the HDS laptop and the HFL control unit is lost, the ignition must remain ON, but the HDS laptop may be rebooted and the HFL update tool may be restarted, using the four-digit PIN recorded in step 7.

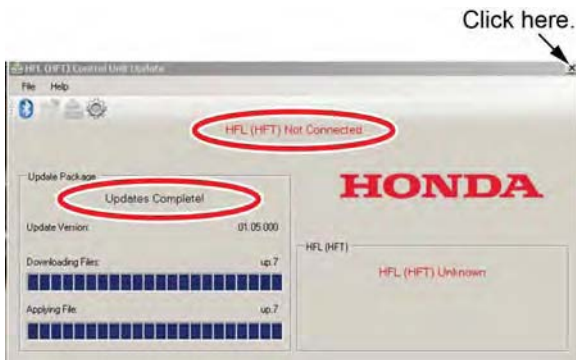
15. On the HFL update tool, a popup window alerts you when the reflash process is finalizing, and then another popup informs you that the reflash process is complete. Click **OK**.



Click "OK"

NOTE: Failure to wait for the HFL update tool message "Updates Complete" to display prior to pressing the star/stop button to select the OFF mode will interrupt the HFL programming and will damage the HFL control unit.

16. The HFL update tool will indicate the update is complete, and automatically disconnects the Bluetooth connection from the HFL control unit. Close the HFL update tool by clicking on the "X" in the upper right-hand corner.



17. The vehicle's display screen indicates the update status:

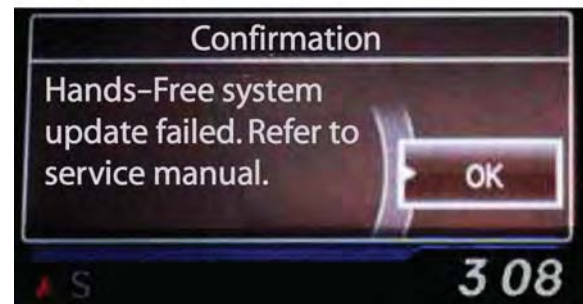
- If successful, an update screen and subsequent "updated successfully" messages are displayed. Press the engine start/stop button to select the OFF mode. Go to step 18.
- If not successful, a confirmation screen indicates that the process failed. Disregard the reference to the service manual. Go to step 20.

NOTE: Wait at least 10 seconds before continuing to the next step.

Successful



NOT Successful



18. Confirm the HFL control unit is updated: Repeat steps 2 through 4, then go to step 19.

19. Press the audio preset No. 2 button several times to cycle through the display screens until you see the "A-Diag XX.XX.X" screen. Verify that the correct software version is installed.

NOTE: The first "A-Diag" screen displays the first five digits of the software version. Press the No. 2 button to see the last two digits.



If an "A-Diag ---" screen appears, turn the audio unit OFF. Repeat steps 2 and 3 then press the "PHONE" button for at least 5 seconds. The HFL diagnostic screen is now visible. Press the audio preset button No. 2 until the "A-Diag XX.XX.X" screen is displayed. Verify that the correct software version is installed.

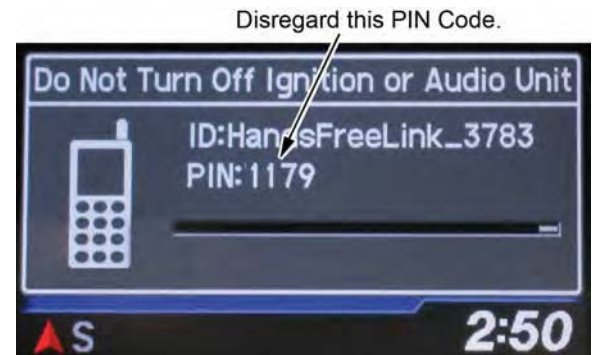
- If the software is updated to the correct version, press the engine start/stop button to select the OFF mode. The reflash process is complete.
- If the software is not updated, go to step 20.

20. Press the engine start/stop button to select the OFF mode.

21. Repeat steps 2 through 6, then go to step 22.

22. Press the selector knob on the audio unit to change the HFL update screen. A different PIN code is displayed; ignore it. You'll use the PIN you wrote down in step 7.

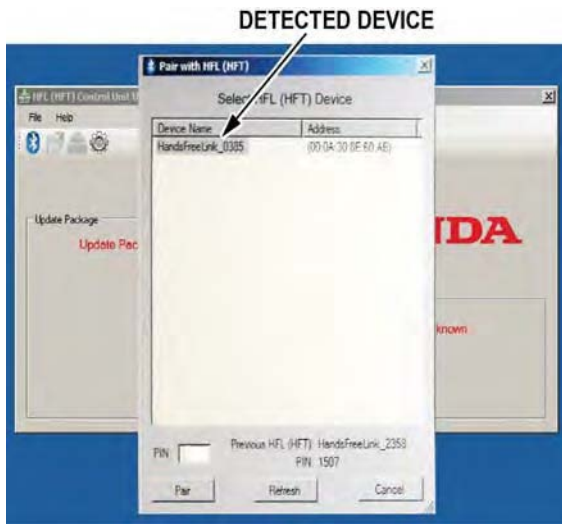
NOTE: The original PIN is required to complete the HFL update and to re-establish communication if the update process is interrupted. If the original PIN is lost, forgotten, or otherwise misplaced, and an interruption to the reflash process occurs, the HFL control unit will remain stuck in reflash mode, and you will be unable to complete the HFL update. If this happens, you must replace the HFL control unit.



23. In the HFL update tool, click on the Bluetooth icon to pair the vehicle's HFL control unit to the HDS laptop.

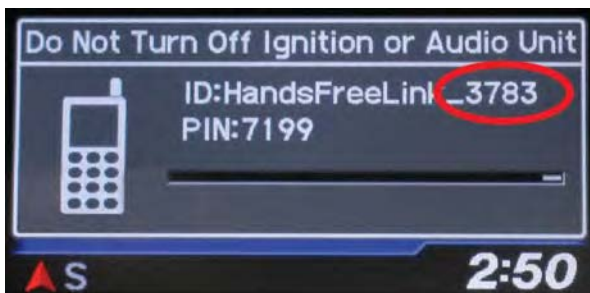


24. In the HFL update tool, the “Pair with HFL” window pops up. Wait a few seconds for the display to show “All Detected Bluetooth Devices.” If no devices are found after 30 seconds, click on the Refresh button.

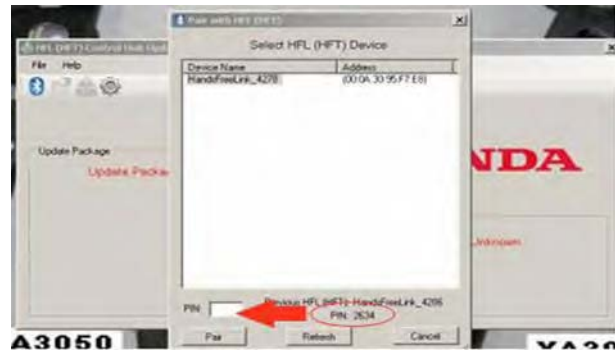


25. In the HFL update tool, select the correct Bluetooth device (if more than one appears) that matches the HandsFreeLink ID Code shown in the vehicle’s display screen.

NOTE: There may be more than one Bluetooth device listed on the HFL update tool “Pair With HFL(HFT)” screen. Select the correct HFL ID from the list.



26. In the HFL update tool, enter the original 4-digit PIN (recorded in step 7) into the lower left corner of the popup window. Click **Pair** to start the pairing process again.



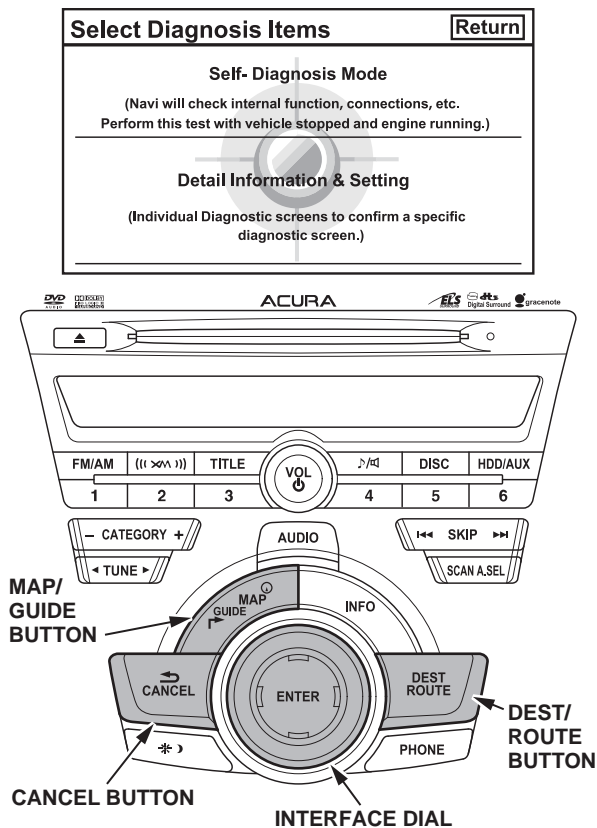
NOTE: If the original PIN is lost, forgotten, or otherwise misplaced, the HFL control unit will be stuck in reflash mode, and you will be unable to complete the HFL update. If this happens, you must replace the HFL control unit.

27. Repeat steps 11 through 17 to repeat the HFL control unit update procedure.

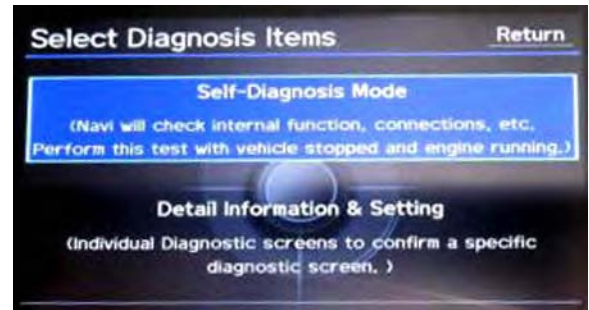
Vehicles with Navigation

NOTE: Failure to follow the procedures and precautions in this bulletin may damage the HFL control unit.

1. Connect a jumper battery to the vehicle and leave it connected during this entire procedure to maintain a steady voltage.
2. Press the engine start/stop button to select the vehicle ON mode.
3. Wait for the navigation system to boot up. When the "OK" screen appears, press and hold the MAP/GUIDE, the DEST/ROUTE, and the CANCEL buttons for at least 3 seconds to access "Select Diagnosis Items."



4. Rotate the interface dial to select "Self Diagnosis Mode," then press ENTER on the interface dial.



5. The "System Link" screen appears and does an automatic diagnostic check. Wait a few moments while the process completes. Once completed, rotate the interface dial to select HFL and press ENTER using the interface dial.



Wait until diagnostic check is complete.



Select HFL button.

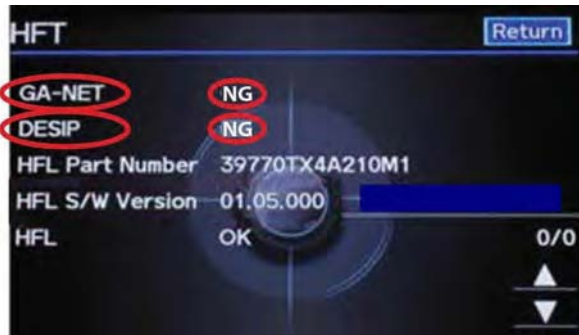
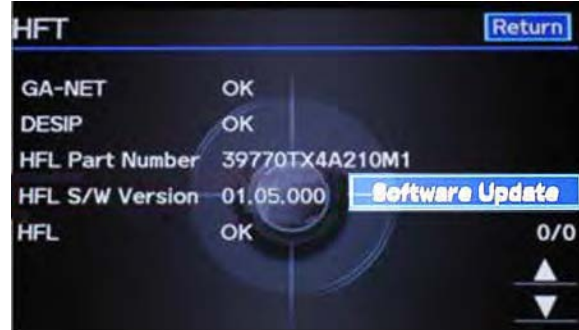
- In the HFL update tool, double-click the HFL Control Unit Update icon to launch the Honda HFL (HFT) Control Unit Update Tool (HFL update tool).



NOTE: The HDS laptop must be connected to an AC outlet during the reflash process and must be within a distance of 21 feet to the vehicle. Do not allow the HDS laptop to go into sleep or hibernate mode during the reflash process. If this occurs, the Bluetooth connectivity between the HDS laptop and the vehicle's HFL system is dropped, and the reflash process is interrupted. It will then be necessary to restart the reflash procedure. See your laptop manufacturer's instructions or your system administrator for assistance to change these settings.

- Rotate the interface dial to select "Software Update" in the HFL menu. Press ENTER on the interface dial to set the HFL system into reflash readiness mode.

NOTE: If either GA-NET or DESIP is NG, the Software Update button will be grayed out, and you won't be able to proceed with this procedure. You must troubleshoot for and repair any NG conditions before continuing.

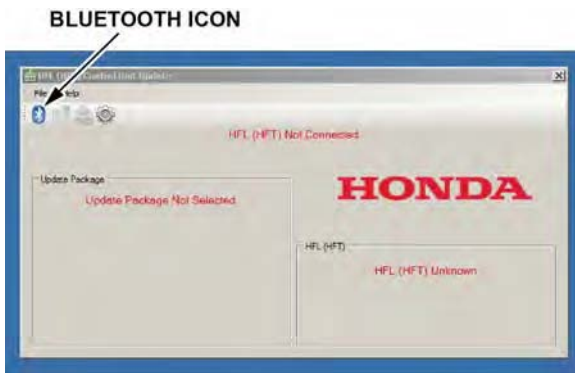


- The HFL software update screen will display a 4-digit PIN code. Write it down on a piece of paper or on the RO and leave it in the vehicle.

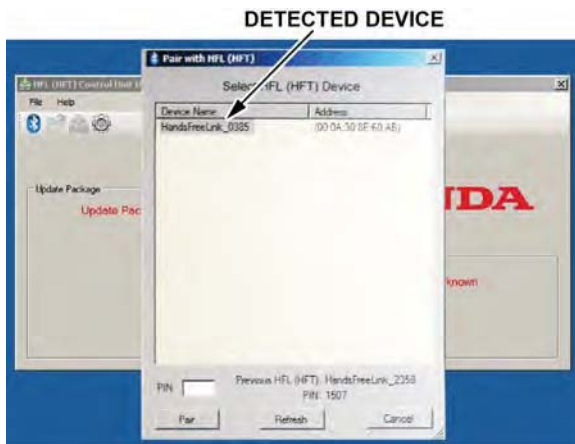
NOTE: This PIN is required to complete the HFL update and to re-establish communication if the update process is interrupted. If this PIN is lost, forgotten, or otherwise misplaced, the HFL control unit will be stuck in reflash mode, and you will be unable to complete the update. If this happens, you must replace the HFL control unit.



- In the HFL update tool, click on the Bluetooth icon in the upper left corner of the “HFL Control Unit Update” screen in the HDS laptop to allow pairing with the vehicle’s HFL.

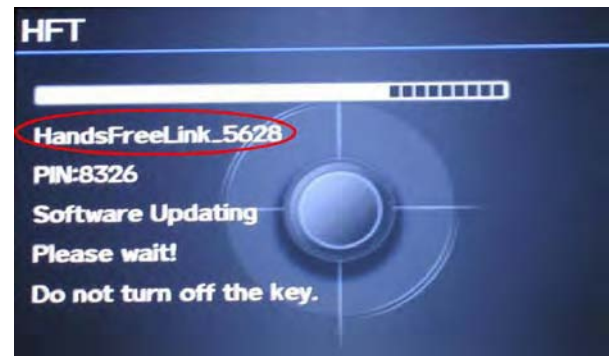
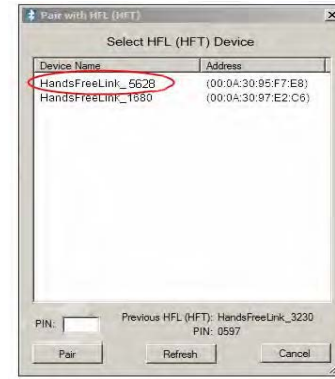


- In the HDS laptop, the “Pair with HFL” window pops up. Wait a few seconds for the display to show “All Detected Bluetooth Devices.” If no devices are found after about 30 seconds, click **Refresh**.



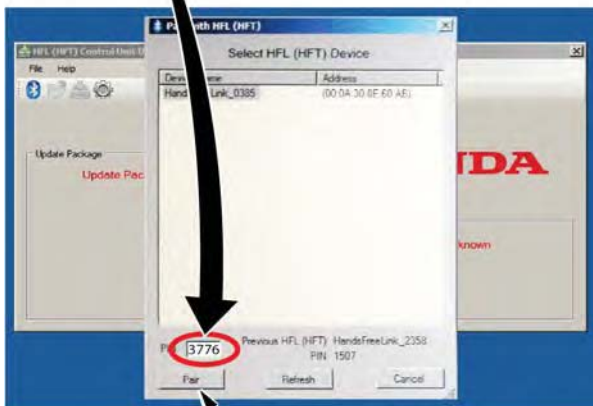
NOTE: If the HFL control unit is unable to establish a Bluetooth connection with the HFL update tool after 5 minutes, it times out. If this occurs, reboot the HDS laptop, press the engine start/stop button to select the OFF mode, and go to step 2.

- In the HFL update tool, select the Bluetooth device from the list that matches the HandsFreeLink ID code shown in the navigation display.



NOTE: There may be more than one Bluetooth device listed in the HFL update tool “Pair With HFL (HFT)” screen. Select the correct HFL ID from the list.

12. In the HFL update tool, once the Bluetooth device has been detected, enter the four-digit PIN from the vehicle's display screen into the lower left-hand corner of the pop-up window. Click **Pair** to begin the pairing process.



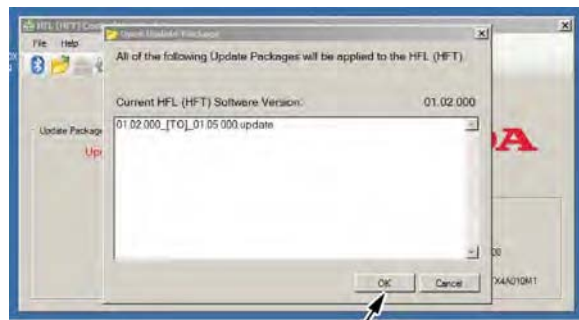
PAIR BUTTON

NOTE: Leave the PIN you wrote down in step 8 with the vehicle. This PIN is required to complete the HFL update and to re-establish communication if the update process is interrupted. If this PIN is lost, forgotten, or otherwise misplaced, the HFL control unit will be stuck in reflash mode, and you will be unable to complete the update. If this happens, you must replace the HFL control unit.

13. Wait for the HFL update tool to complete the Bluetooth pairing process.



14. In the HFL update tool, the "Open Update Package" window pops up when the Bluetooth pairing process is complete. The HFL update tool automatically determines which version of the HFL software is present. The compatible updates will be displayed on the HFL update tool. Click **OK** to begin the HFL control unit reflash process.



Click "OK"

NOTE: If the HFL software is current and no update is required, you will see the following notification on the HFL update tool.



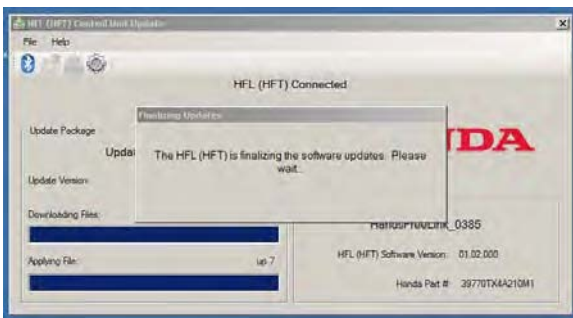
15. The HFL reflash process begins. Allow several minutes for the programming to complete. The blue bars indicate the programming status and progression.



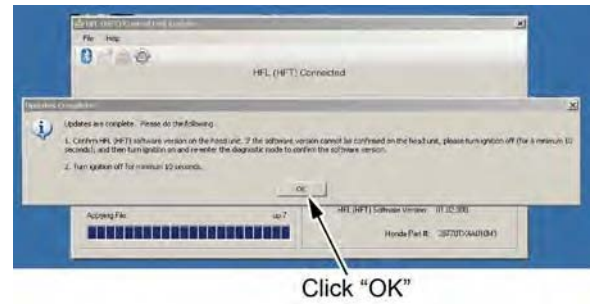
NOTE: Do not press the engine start/stop button to select the OFF mode while the HFL update tool is transferring files to the HFL control unit. Doing so may damage the HFL control unit. If the Bluetooth connectivity between the HDS laptop and the HFL control unit is lost, the ignition must remain ON, but the HDS laptop may be rebooted and the HFL update tool may be restarted, using the four-digit PIN you wrote down in step 8.



16. In the HFL update tool, a popup window alerts you when the reflash process is finalizing.

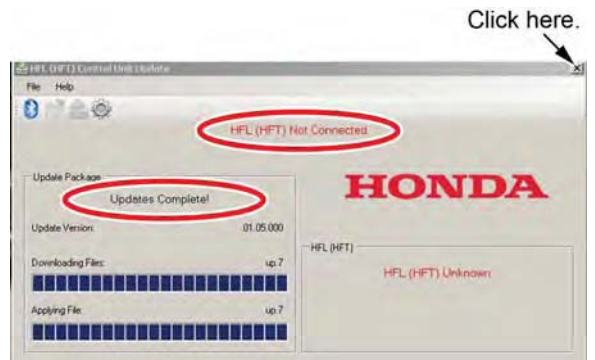


17. In the HFL update tool, a popup window informs you that the reflash process is complete. Click **OK**.



NOTE: Failure to wait for the HFL update tool message "Updates Complete" to display prior to pressing the engine start/stop button to select the OFF mode will interrupt the HFL programming and will damage the HFL control unit.

18. The HFL update tool will indicate the update is complete, and automatically disconnects the Bluetooth connection from the vehicle's HFL control unit. Close the HFL update tool by clicking on the "X" in the upper right-hand corner.

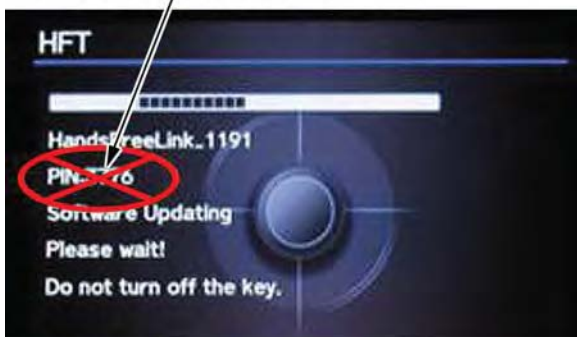


19. Confirm that the software update was successful:
 - Press the engine start/stop button to select the OFF mode.
 - Wait at least 10 seconds.
 - Repeat steps 2 through 5.
 - If the software is updated to the current version, the reflash process is complete. Press the engine start/stop button to select the OFF mode.
 - If the software did not update to the current version, go to step 20.



20. Press the engine start/stop button to select the OFF mode.
21. Repeat steps 2 through 7, then go to step 22.
22. The HFL update screen will display a 4-digit PIN. Disregard this PIN; you'll use the original PIN acquired in step 8.

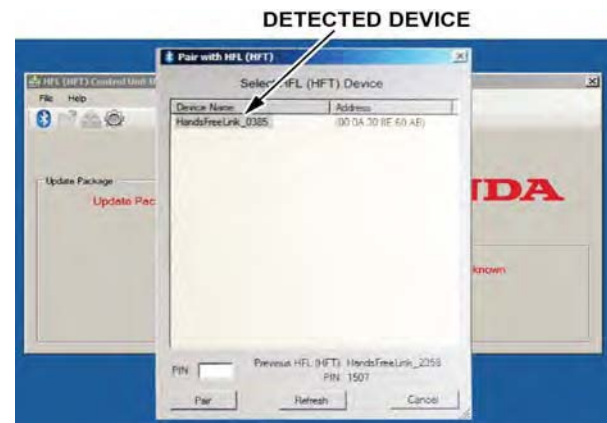
Disregard the PIN number at this step.



23. In the HFL update tool, click on the Bluetooth icon in the upper left corner of the screen to pair with the vehicle's HFL control unit.

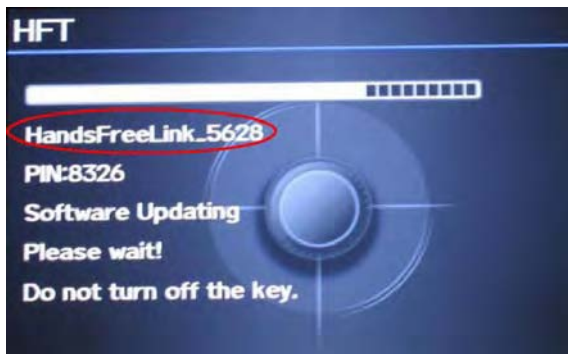
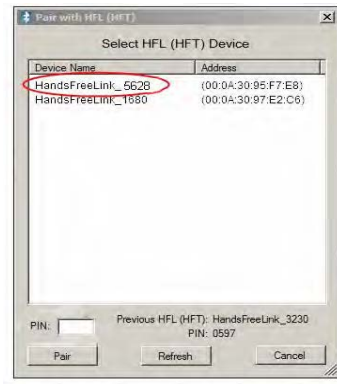


24. In the HFL update tool, the "Pair with HFL" window pops up. Wait a few seconds for the display to show "All Detected Bluetooth Devices." If no devices are found after approximately 30 seconds, click **Refresh**.



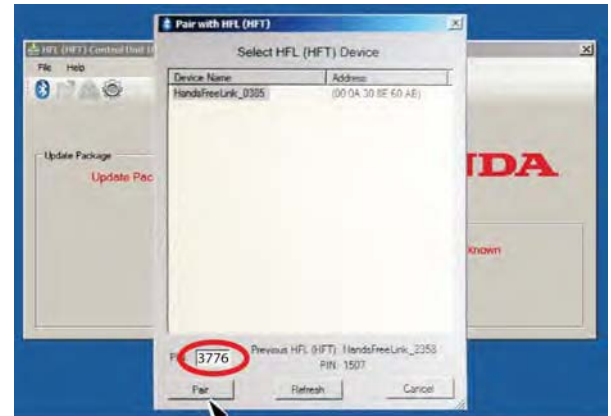
NOTE: If the HFL control unit is unable to establish a Bluetooth connection with the HFL update tool after 5 minutes, it times out. If this occurs, reboot the HDS laptop, press the engine start/stop button to select the OFF mode, and go back to step 20.

25. In the HFL update tool, select the correct Bluetooth device (if more than one appears) that matches the HandsFreeLink ID code shown in the vehicle's display screen.



NOTE: There may be more than one Bluetooth device listed in the HFL update tool "Pair With HFL (HFT)" screen. Select the correct HFL ID from the list.

26. Once a device is detected, enter the previous 4-digit PIN from step 8 into the lower left-hand corner of the popup window in the HFL update tool, if it's not already displayed. Click **Pair** to begin the pairing process.



PAIR BUTTON

NOTE: If the original PIN is lost, forgotten, or otherwise misplaced, the HFL control unit will be stuck in reflash mode and you will be unable to complete the update. If this happens, you must replace the HFL control unit.

27. Repeat steps 13 through 19.