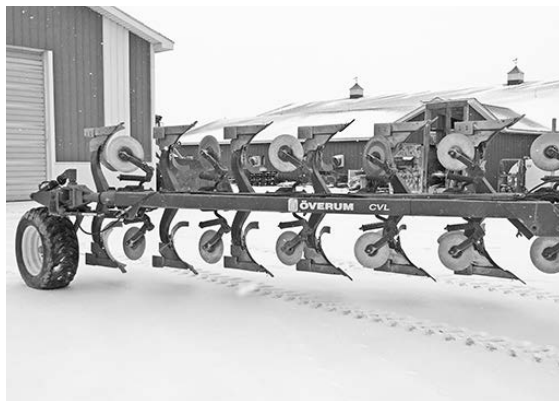


DECEMBER FEATURED CLASSIFIEDS



'10 8320R Powershift, ILS, LSW, 1100 rear, 1000 ft., like new 5-hyd. outlets, lots of wts. avail., \$149,000.
(989) 553-2077



Overum 6-btm. rollover plow, variable width, a lot of new iron, field ready, \$23,000 or best offer.
(989) 325-1473



'73 Int'l. F2070, 22', Omaha bed, hoist, Det.
(574) 633-4852

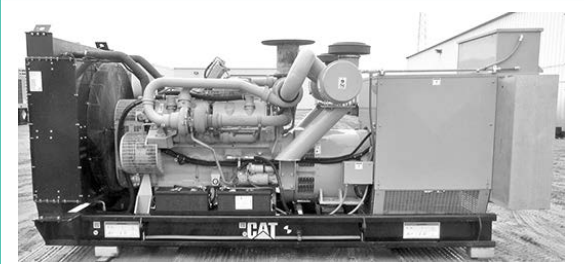


'99 F450 14' stake truck, dsl., new clutch, 82,000 miles, clear title, stake bed needs some new boards, \$12,000.
(248) 249-1200



HAY FOR SALE
Thank you to everyone that bought hay this last season. We are preparing for the coming season & are looking forward to talking to new customers & making even more hay.
David & Tammy Bell Family
(906) 440-6455

(44) Calf pens, 72"x40"; 2-hole head gates, pens are back to back w/poly dividers, \$8,500
Slurry Store, 1.2 million gal., 120' diam., (4) rings high w/Houle 6" pump, (2) center, (1) over top agitation, \$25,000
Flygt pump, submersible, 20 hp, 480V w/ overload protection controls, used less than 1-1/2, \$12,500
NH Big Baler 340 crop cutter, 6000 bales w/applicator, always housed, \$115,000
(989) 345-1501



GENERATORS: Used, low hr. take-outs, 20kW-2000kW, dsl., propane, nat. gas.
Abraham Generator Sales Co.
www.abrahamindustrial.com
(701) 371-9526



JD 4555, 7600 hrs., the hrs. might go up as we use it on our farm, good A/C & heat, has brand new int. kit.
(616) 255-5025



'13 Case IH 550, field ready, 36" belts, 3000 hrs., 500 on eng. rebuild, leather, eng. warranty until Jan. '22 w/papers, 4-SCV, GPS w/FM-750, DEF Del. bare-back, \$190,000.
(810) 404-9504



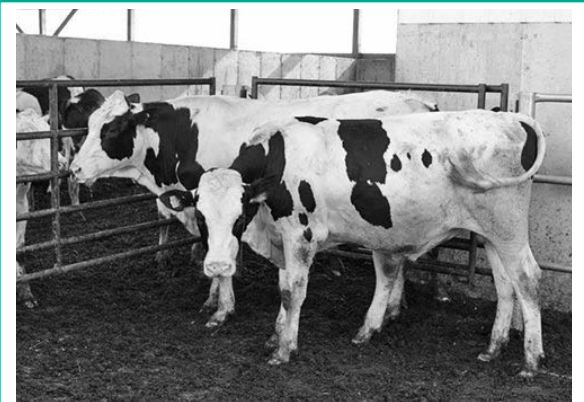
WE ARE A MOUNTAIN TARP DEALER
All tarping needs are avail. Call for details & fall pricing.
(989) 550-0644



Clean wheat straw bales, regular size, strapped in bundles of (21) bales, easy to load, strap & haul, \$3 ea.
(810) 577-3159



'08 Case IH 3208 28" corn head, \$32,000
'10 White 8523 split row planter, central fill, no-till coulters, Keaton firmers, bean & corn plates & monitors, \$62,000
(989) 397-2681

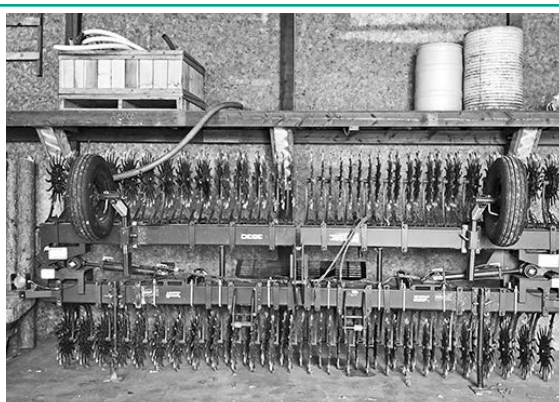


HOLSTEIN BREEDER BULLS
Genomic tested, flushed embryos 550-800 NM\$ are \$1,600; Under 550 NM\$ are \$1,300; Ready for cows &/or heifers.
(574) 349-1159

J&M grain cart, 875-bu., like new cond.
(989) 573-0096

Will build hay wagon bed made out of oak, 16' \$600; 18' \$650.
5543 E. Herrick Rd.
Clare, MI 48617
(989) 386-4866

'12 NH T 360, 3000 hrs., frt. susp., w/ Pitbull silage blade, 14', 8-way, very little use, \$135,000
Approx. (500) tire sidewalls, \$2 ea.
(44) Norbco freestalls, single beam mt. w/ neck rail & clamps, H.D., \$2,500
Poly calf warming box w/heater, \$450
Ritchie poly water fountain, 90", \$425
(80) Freestalls w/neck rail, \$20 ea.
Norbco, various lengths of gates, some w/quick latches, \$12/ft.
(989) 345-1501



'16 Yetter 30' rotary hoe, great cond., always stored inside, \$17,000.
(989) 312-4978

Gleaner F2 combine, 13' head, 4R corn head, everything works & runs good, spare parts included, \$6,000 or best offer.
(989) 506-4295

RETIRED!
28' Glencoe soil finisher, 5-bar rake, set up for packer; 3-Pt. 14-shank Bush Hog chisel plow, high clearance; Extra parts; Pkg. deal, \$7,000 or best offer.
(517) 930-3808



'93 White 12R30" frt. fold 6180 planter, dry fertilizer w/fill auger, corn, soybean, dry bean plates, seed monitor, \$11,000. (989) 756-2783

Great Plains no-till planter, grass seeder, solid stand, 15', 7.5" spacing, new tires, good shape, \$9,500 or best offer. (989) 954-4484

ATTENTION FARMERS:

Sweet feed blend of soy hulls & sweet cherries in syrup. Farms are using it to help replace corn & sweeten their feed w/sugar content. Comparable to molasses. Good protein & energy blend. \$100/ton. Up to (100) tons a month avail. For more info & feed tests, call: (616) 862-0122

John Blue 1000-gal., 50' sprayer, \$2,800; IH 720 5-btm. plow, \$1,800; '90 Cat Challenger 65, \$28,000; Jamco 1200-bu. dbl. hopper grain trlr., \$14,000. (810) 326-4565

JD 8300, original owner, retired from farming, fully loaded, buddy seat & fenders. (989) 573-0096

Gleaner G combine, dsl., hydro, stored inside, also avail. parts combine w/dry bean equipment
28Lx26 Firestone tires, 10-ply, 75% tread, mtd. on 10-bolt rims, grain cart or combine
IH fenders, flat top, fits '06, 56 & 66 Series
10-Bolt hub extensions, many different lengths
(989) 239-7823

Case IH C80 tractor w/L550 ldr., 6420 hrs., 4x4, \$11,500
NH 308 manure spreader, \$2,600
(3) Killbros gravity wagons, 13-ton gear, \$1,800 ea.
Galien, MI (269) 547-4579

Insulated steel panels for shop or building, call for pricing
Parting out '81 GMC Astro, 8V71
Natural gas generator, 35KW, \$3,000
Hobart meat band saw 220 elec. \$2,250
Hobart mixer grinder & S.S. tables
Case 1690 needs axle, \$3,750
Gravity conveyor, \$25 per foot
Walk-in coolers & freezers
(616) 293-6531

Large square bales of wheat & oat straw, 3x4x8 squares & 3x4x6 squares, delivery avail.
Large square bales of grass hay, 3x4x6 squares
Oats available
Glencoe 13 shank chisel plow
Case 4300 32' field cult., 5 spike bar w/ rear hitch
'09 FTL Columbia semi w/ C13 CAT eng., 702,000 miles, 10 spd. automatic, trans., road ready
2nd, 3rd & 4th Cutting alfalfa hay, large square bales avail.
(810) 404-5978 or (810) 404-5977



'95 Military cargo/flatbed truck, Cat 3116 turbo, 7 spd. Allison, 5,000 miles, 22,770 GVW, \$14,500. (810) 326-4565



'90 Cat Challenger 65, 270 hp, new tracks, 5000 hrs., 10 spd., pwr. shift, \$28,000. (810) 326-4565

JD 980 36.5' field cult., 5-bar spike leveler, \$9,000
UM 1225 40' rolling harrow, nice shape, field ready, \$9,000
IH 326 24' S-tine field cult., new bearings, new sweep, main tires new, \$2,800
Brillion 9-shank tdm. ripper, discs on frt., nice shape, \$4,800
Krause 20' disc, new whl. bearings, folds to 12' wide, new hoses, \$2,600
Steiger PTA 325, 3406 Cat dsl. eng., exc. shape, totally repainted & rblt., \$32,000
(989) 415-5647



Timed Online Retirement Auction
Wed., Dec. 15, 2021 at 10:00 A.M. EST
2105 Hubbard Rd., Monroe, MI 48161
Visit our website at
www.sullivanauctioneers.com
for full listing, photos, info & bidding
Calvin Smith (734) 735-0826
Auction Managers:
Zach Hiner (260) 437-2771
Randy Polley (765) 425-6745
IN Lic. #AU10600070

30' Rotary hoe JD 400
Gleaner E combine
Westco rock picker
8R Brillion folding cult.
JD 40 combine
(574) 633-4852

WANTED:
Picket rod puller, Speedy bean puller, Lockwood windrower & Sund pickup.
(989) 860-3917

MOBILE EQUIPMENT REPAIR
Servicing all of Michigan.
Call/text (231) 282-9620

'13 Case IH 1240 16x22 planter, liquid 2x2 & in-furrow, row cleaners, 700 mon., low acres & well taken care of, owner retiring.
(989) 550-3357

8.6 Wide x 24' box car hauler trlr., never used, '08, kept inside, first \$10,000.
(231) 920-4253

'76 Mack semi tdm., 350 Cum., \$3,500
JD 635 hydra flex grain head, w/header cart, \$10,500 or w/o headercart, \$6,000
MF 6R30" corn head, adapted to JD combines, \$1,800
JD 843 corn head, \$3,000
JD 930 flex head, \$4,000
'04 F150 4x4 crew cab, no rust, all options, stored in winter, 94,400 miles, \$13,500
(2) Tires 12x16.5, \$50/pair
(989) 763-1084

WANTED
JD 4R or 6R mtd. bean puller
Lockwood/Innes 4R or 6R bean windrower
(616) 520-3264

Organic alfalfa baleage, individually wrapped, 3x4x6 bales, 180-220RFQ
24-26 protein, delivery avail.
Gene Vogel (989) 415-1023

WANTED
28' or longer dump trlr. frames, 95' or newer or repairables.
(989) 550-0644

WANTED
JD 4R or 6R mtd. bean puller
Lockwood/Innes 4R or 6R bean windrower
(616) 520-3264

JD 1470 discbine for parts, willing to sell whole or to part out, call for details.
(574) 309-4605



Kubota L2500 for parts, selling whole or parts, eng. turns over, many good parts, has been sitting in shop for 6-yrs., call for more info, \$2,650 or best offer
(989) 330-3875

3x4 Bales of wheat straw, delivery avail, grinding hay rained on 2nd/4th cutting.
(989) 233-4236

Old school (mechanical) injection pump repair, dead, sick or leaking pumps repaired at a workingman's price.
"Pumpman Al"
(231) 757-0064

WANTED
3.9 4BT Cum. engs., running, take outs or rebuildable cores.
Also buying injection pump cores
We rebuild injection pumps & injectors
Northern Power
(231) 743-6817

3x4 Large square bales, delivery avail., nurse crop oats/alfalfa, 1st/2nd cut orchard grass alfalfa mix, organic 1st/2nd cut alfalfa.
(989) 233-4236

(90) 4x5 Bales, 2nd cutting, twine, not horse hay, \$40/bale

WANTED
JD 148 ldr. w/valve
(989) 727-3252

Conestoga Champion outdoor gasifying wood furnace, the cleanest burn & highest efficiency line of wood furnaces.
For more info, call
Linus Martin (989) 261-3285

Young laying hens for sale, ready to lay, raised non-GMO, special pricing \$9.50 ea. and volume discounts.
Fairview, MI
(989) 335-0080