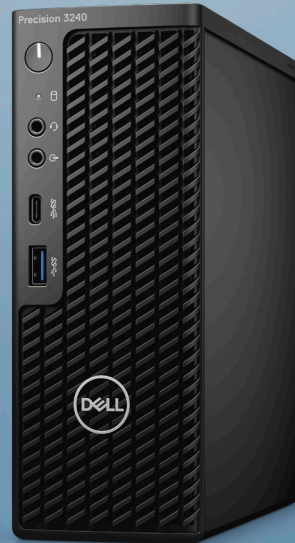




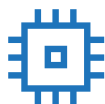
PRECISION 3240 COMPACT

The smallest workstation with AI-based optimization.*



SPACE-SAVING DESIGN

The ultra small form factor and several mounting options, such as behind the monitor or under the desk, make it ideal for space-constrained workspaces that need workstation-class performance and reliability. Optional WiFi capabilities and a range of accessible ports keep you connected to everything you need, while protective dust and cable covers make it great for Edge computing.



LATEST TECHNOLOGY

Power through intensive tasks easily with 10th Generation Intel® Core™ or Xeon® processors and faster memory speeds of up to 2933MHz, capacity up to 64GB. Run applications at top speeds with up to NVIDIA Quadro® RTX 3000 professional graphics, a NVIDIA exclusive platform for the 3240 Compact. Scalable storage with PCIe NVMe SSD options, up to 4TBs, deliver plenty of room for your projects.



INTELLIGENT PERFORMANCE

Precision workstations feature Dell Optimizer for Precision which uses Artificial Intelligence software to learn how you work and adapts to your style to create a smarter, more-personal experience. The result? Improved system responsiveness, better application performance, storage and audio optimization and more reliable network connectivity.* All from a single console that you manage from WorkspaceOne or Microsoft SCCM — allowing IT staff to deploy, configure, update, and monitor Optimizer remotely.



MISSION CRITICAL RELIABILITY

Independent Software Vendor (ISV) certified to ensure the high-performance applications you rely on every day run smoothly. Also, with Intel® Xeon® processors you can get Error Correcting Code (ECC) memory which identifies and corrects single bit memory errors. Our exclusive Reliable Memory Pro software works with ECC memory to identify and map out bad memory sectors and will alert you when the memory is at a critical level and needs replaced — providing layers of protection against memory related errors.

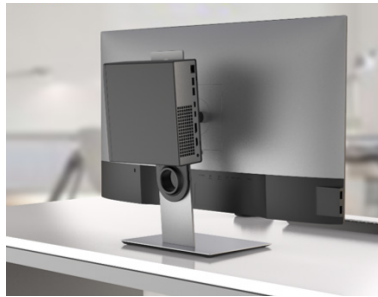
Recommended Accessories

PRECISION 3240 COMPACT



PRECISION COMPACT
VESA MOUNT

Securely house the Precision 3240 Compact under your desk with this mount without losing easy access to the Precision's ports. Or securely mount it to the wall for added flexibility.



DELL PRO 1/1.5 MONITOR
STAND MOUNT

The monitor stand mount allows the Precision 3240 Compact to be firmly mounted behind select stands and monitors, as shown above (mounted on back of P2720DC monitor).



PRECISION COMPACT
DUAL VESA MOUNT

Securely house the Precision 3240 Compact and the monitor using a single or dual monitor arm on your desk with this mount.



DELL A/C ADAPTER
SLEEVE MOUNT

Reduce desk clutter with this adjustable mount that securely houses the A/C adapter, per the needs of the user.



DELL ULTRASHARP 27 USB-C
MONITOR | U2719DC

See fine details and true-to-life color on this 27" QHD monitor in an innovative, stylishly thin design with USB-C connectivity.



DELL PREMIER WIRELESS
KEYBOARD AND MOUSE | KM7120W

Designed to work seamlessly across 3 devices, this compact keyboard mouse combo keeps your desk clutter-free and lets you stay productive with up to 36 months** of battery life.

Features & Technical Specifications

PRECISION 3240 COMPACT

Feature	Technical Specification	Feature	Technical Specification
Model Number	Precision 3240 Compact	Storage Options⁴ (continued)	256GB PCIe NVMe Class 40 M.2 SSD 512GB PCIe NVMe Class 40 M.2 SSD 1TB PCIe NVMe Class 40 M.2 SSD 2TB PCIe NVMe Class 40 M.2 SSD 512GB PCIe NVMe Class 50 M.2 SSD 1TB PCIe NVMe Class 50 M.2 SSD 256GB PCIe NVMe Class 40 Self Encrypting M.2 SSD 512GB PCIe NVMe Class 40 Self Encrypting M.2 SSD 1TB PCIe NVMe Class 40 Self Encrypting M.2 SSD
Processor Options¹	Intel® Core™ i3-10300 (4 Core, 8M cache, base 3.7GHz, up to 4.4GHz) Intel® Core™ i5-10500 (6 Core, 12M cache, base 3.1GHz, up to 4.5GHz) Intel® Core™ i5-10600 (6 Core, 12M cache, base 3.3GHz, up to 4.8GHz) Intel® Core™ i7-10700 (8 Core, 16M cache, base 2.9GHz, up to 4.8GHz) Intel® Core™ i9-10900 (10 Core, 20M cache, base 2.8GHz, up to 5.2GHz) Intel® Xeon W-1250 (6 Core, 12M cache, base 3.3GHz, up to 4.7GHz) Intel® Xeon W-1270 (8 Core, 16M cache, base 3.4GHz, up to 5.0GHz) Intel® Xeon W-1290 (10 Core, 20M cache, base 3.2GHz, up to 5.2GHz)	Storage Controller	Integrated: Intel Rapid storage Controller 12.0 supporting SATA 6Gb/s and host based RAID 0/1
Operating System Options²	Windows® 10 Professional (64 bit) Windows® 10 Pro for Workstations Windows® 10 Home (64 bit) Windows® 10 Pro (64 bit) National Academic Windows® 10 IoT Enterprise 2019, LTSC Red Hat® Enterprise Linux® 8.2 (coming soon) Ubuntu Linux 18.04.03 LTS (64 bit)	Communications	Integrated: Intel Ethernet Connection I219-LM 10/100/1000 Optional: Intel 1Gb NIC PCIe Card Aquantia® AQtion™ AQN-108 5/2.5 GbE NIC Adapter Optional: Wireless / Bluetooth w/ vPro support
Chipset	Intel® W480 Chipset	Audio Controller	Integrated Realtek ALC3246 High Definition Audio Codec (2 Channel)
Memory Options³	2 SoDIMM slots; Up to 64GB 2933MHz Non-ECC & ECC DDR4 Memory	Speakers	Internal Speaker; Optional Dell 2.0 stereo speaker systems available and Dell Professional Soundbar AE515M for select flat-panel displays
Graphics Options³	One PCI Express® Gen 3 Graphics card up to 75W Entry 3D cards: NVIDIA® Quadro P400 NVIDIA® Quadro P620 NVIDIA® Quadro P1000 NVIDIA® Quadro RTX 3000 Professional 2D cards: Intel® UHD Graphics 630 (i3,i5,i7,i9) Intel® UHD Graphics P630 (Xeon)	Add-in Cards	Thunderbolt 3 PCIe Card Support for up to (1) additional PCIe SSD on Dell Precision Ultra-Speed drive (x8) with active cooling Serial Port PCIe Card Parallel Port PCIe Card USB Type-C® 3.1 Gen 2 PCIe Card
Storage Options⁴	Support for up to (2) M.2 PCIe SSD on motherboard slot and Up to (1) 2.5" SATA Support for up to (1) additional PCIe SSD on Dell Precision Ultra-Speed drive (x4) with active cooling 500GB 5400RPM 2.5" SATA HDD 500GB 7200RPM 2.5" SATA HDD 1TB 5400RPM 2.5" SATA HDD 1TB 7200RPM 2.5" SATA HDD 2TB 5400RPM 2.5" SATA HDD 500GB 7200RPM 2.5" SATA HDD, Self-Encrypting, Opal 2.0, FIPS	I/O Ports	Front 1 - USB 3.2 Gen 2 Type-A (10 Gbps) with PowerShare 1 - USB 3.2 Gen 2 Type-C (10 Gbps) 1 - Universal Audio Jack 1 - Audio Line In/Out Internal 1 - SATA 6Gb/s Rear 1 - USB 3.2 Gen 1 Type-A 1 - USB 3.2 Gen 1 Type-A with SmartPower 2 - USB 3.2 Gen 2 Type-A (10 Gbps) 2 - DisplayPort® 1.4 1 - Optional Port (VGA, HDMI 2.0, DisplayPort++ 1.4, USB Type-C with DP 1.4-alt mode) 1 - RJ45 Network Connector 1 - A/C adapter port 2 - Integrated external SMA antenna connectors (Optional)

Features & Technical Specifications

PRECISION 3240 COMPACT

Feature	Technical Specification
Chassis	<p>H x W x D: 7.4" x 2.76" x 7.03" (18.81 cm x 7.0 cm x 17.87 cm), Min weight: 3.77 lbs (1.71 kg)</p> <p>Bays: (1) Internal 2.5" Bay - supports (1) 2.5" drive</p> <p>Slots: (1) half height PCIe x8 Gen3; (1) M.2 (22 x 80mm); (1) M.2 (22 x 30 mm)</p> <p>Power Supply: 7.4mm 180W AC adapter (external) 7.4mm 240W AC adapter (external)</p>
Security Options⁶	<p>Trusted Platform Module TPM 2.0, Dell Data Guardian, Dell Endpoint Security Suite Enterprise, Dell HW Crypto Accelerator, Microsoft Windows Bitlocker, Local HDD data wipe via BIOS ("Secure Erase"), Encryption - SED HDD (Opal FIPS), Chassis lock slot support, Chassis Intrusion Switch, D-Pedigree (Secure Supply Chain Functionality), Setup/BIOS Password, Optional Smart Card keyboards, Optional Smart Card Reader, Intel® Trusted Execution Technology, Dell Secure Works, BIOS support optional Computrace, Intel Software Guard extensions</p>
Systems Management⁷	<p>Dell Client Command Suite; via vPro (coming soon)</p>
Regulatory & Environmental	<p>ENERGY STAR® configurations</p> <p>EPEAT® Gold registered (see epeat.net for specific registration rating/status by country)</p> <p>China CECP</p> <p>GS Mark</p> <p>For a complete listing of declarations & certifications, see Dell's regulatory & compliance homepage at dell.com/regulatory_compliance</p>
Warranty & Support Services⁸	<p>3-Year Limited Hardware Warranty and 3-year NBD On-Site Service after Remote Diagnosis</p> <p>Optional: Dell ProSupport is designed to rapidly respond to your business's needs, help protect your investment and sensitive data and provide enhanced proactive support services to help reduce risk and complexity within your IT environment</p>

Built for business

Experience a new way to work with Dell Technologies Unified Workspace Intelligence built in. Modernization built on.

We know that having the right device is just the start to a great workday. Employees need intelligent, intuitive and responsive experiences that allow them to work productively and without interruption. According to research, 1 out of every 4 users would question their job and the company they work for if they had a negative experience with their technology. Dell Technologies Unified Workspace is transforming the employee experience and ensuring IT has proactive, predictive and automated solutions to deliver on the promise of a modern workday, while simplifying their ability to deploy, secure, manage and support their environment



DEPLOY

ProDeploy in the Unified Workspace allows IT to move away from traditional, high-touch, manual deployment, and instead, ship devices preconfigured with company apps and settings from the Dell factory directly to their end users — having end users up and working on day one.



SECURE

Dell Trusted Devices provide a foundation to a modern workforce environment with invisible and seamless protection to ensure smarter, faster experiences. End users stay productive and IT stays confident with modern security solutions for the Dell Trusted Device.



MANAGE

Dell Client Command Suite + VMware Workspace ONE offers integrated capabilities that deliver a unified endpoint management experience for IT, enabling them to manage firmware, OS, and apps from one console, while also creating seamless experiences for end users.



SUPPORT

ProSupport resolves hardware issues up to 11x faster than the competition. ProSupport for PCs offers 24x7 access to in-region ProSupport engineers who contact IT when critical issues arise,⁹ so you can focus on what's next, not what just happened. ProSupport Plus helps IT stay a step ahead and virtually eliminate unplanned downtime due to hardware issues. You get all the capabilities of ProSupport, as well as AI-driven alerts to prevent failures and repairs for accidents.¹⁰

DELL Technologies



PRECISION 3240 COMPACT

Create without limits

*Based on competitive analysis May 13, 2020, vs HP Mini and Lenovo Tiny. The Precision 3240 Compact uses Dell Optimizer for Precision, which uses AI to optimize the workstation. HP and Lenovo do not have this capability.

** Based on Dell internal analysis of battery life usage model calculations and 3 million keystrokes per year, Nov 2019. Results vary depending on usage and computing conditions.

Some options available only in select regions; ISV certification applies to select configurations:

1 Intel Turbo Boost mode only available on Xeon, Core i7 and Core i5 processors. Intel Integrated HD graphics only available with select processors.

2 A 64-bit operating system is required to support 4GB or more of system memory.

3 GB means 1 billion bytes and TB equals 1 trillion bytes; actual capacity varies with preloaded material and operating environment and will be less.

4 GB means 1 billion bytes and TB equals 1 trillion bytes; significant system memory may be used to support graphics, depending on system memory size and other factors.

5 This workstation is ENERGY STAR® certified. For more information, visit <https://data.energystar.gov/Active-Specifications/ENERGY-STAR-Certified-Displays/xyyb-v8gs/data>

6 Computrace is not a Dell offer. Certain conditions apply. For full details, see terms and conditions at www.absolute.com/en/about/legal/agreements.

7 Systems Management Options: Intel® vPro Technology - Fully vPro-capable at point of purchase; the vPro systems management option requires vPro processors. Includes support for Intel Advanced Management Technology (AMT) 14.x. Intel® Standard Manageability - Fully enabled at point of purchase, the Intel Standard Management option is a subset of the AMT features. ISM is not upgradeable to vPro technology post-purchase. No Out-of-Band Systems Management - This option entirely removes Intel out of band systems (OOB) management features. The system can still support in band management. OOB management support through AMT cannot be upgraded post-purchase.

8 Availability and terms of Dell Services vary by region. For more information, visit Dell.com/servicecontracts/global; Limited Hardware Warranty available by writing Dell USA LP, Attn: Warranties, One Dell Way, Round Rock, TX 78682 or see www.dell.com/warranty; Onsite Service after Remote Diagnosis: Remote Diagnosis is determination by online/phone technician of cause of issue; may involve customer access to inside of system and multiple or extended sessions. If issue is covered by Limited Hardware Warranty (www.dell.com/warranty) and not resolved remotely, technician and/or part will be dispatched, usually within 1 business day following completion of Remote Diagnosis. Availability varies. Other conditions apply.

9 Based on a Principled Technologies test report, "Spend Less Time and Effort Troubleshooting Laptop Hardware Failures" dated April 2018. Testing commissioned by Dell, conducted in the United States. Actual results will vary. Full report: <http://facts.pt/L52XKM>

10 Based on a Principled Technologies test report, "Dell ProSupport Plus with SupportAssist warns you about hardware issues so you can fix them before they cause downtime" dated April 2019. Testing commissioned by Dell, conducted in the United States. Actual results will vary. Full report: <http://facts.pt/0xvze8>. Hardware issues detected by SupportAssist include hard drives, solid state drives, batteries and fans.

© 2020 Dell Inc. All rights reserved.

Not all Dell Optimizer for Precision features are available on every Dell Precision workstation. Some features may be available to customers after the initial release. Dell, EMC, and other trademarks are trademarks of Dell Inc. or its subsidiaries. Other trademarks may be trademarks of their respective owners. Intel and the Intel logo are trademarks of Intel Corporation in the U.S. and/or other countries. Microsoft and Windows are trademarks of Microsoft Corporation in the U.S. and/or other countries. USB-C Type-C® and USB-C® are registered trademarks of USB Implementers Forum.