



TOYOTA

2021 RAV4

2021 RAV4

Ready for whatever path you take.

Get ready to make the most out of every day in the 2021 Toyota RAV4. Whether your trips take you downtown, uptown, around town or out of town, there's a RAV4 that's ready to redefine what you can do. Whichever you choose, you'll find the perfect blend of sport and utility that will empower your ambitions. So get in, because adventure is waiting just around the corner.



Limited shown in Magnetic Gray Metallic with available Advanced Technology Package, and Adventure grade shown in Lunar Rock with Ice Edge roof. Top: XSE shown in Silver Sky Metallic with Midnight Black Metallic roof with available Technology Package, Limited Hybrid shown in Ruby Flare Pearl¹ with available Advanced Technology Package and available panoramic glass roof, and XLE Hybrid shown in Super White with available Convenience Package.



See numbered footnotes in Disclosures section.



HYBRID

See how far
it takes you.

RAV4 Hybrid's standard Electronic On-Demand All-Wheel Drive (AWD) provides all-weather capability and confident on-road driving dynamics. Add an ample 219 combined net horsepower with an EPA-estimated 40 mpg combined rating,² and you can always take the scenic route.

40
EPA-est. mpg²



XSE shown in Silver Sky Metallic with Midnight Black Metallic roof¹ with available Technology Package

See numbered footnotes in Disclosures section.



RAV Prime XSE shown in Supersonic Red with Midnight Black Metallic roof!
Below: RAV4 Prime XSE interior shown in Black SofTex^{®3} trim with available Premium Package.

PRIME

The ultimate power move.

RAV4 Prime is our quickest, most powerful RAV4. With an impressive 302 combined net horsepower and standard Electronic On-Demand AWD providing added traction, inclement weather won't put a damper on your drive.

94

EPA-est. MPGe⁴



Plug-in Hybrid efficiency

When fully charged, RAV4 Prime has an EPA-estimated 42-mile rating for EV-only driving⁵ And with its ability to seamlessly switch between hybrid and EV modes, it's easy to keep the excitement going with an EPA-estimated 94 MPGe rating⁴

PERFORMANCE

Powered by efficiency.



XSE shown in Silver Sky Metallic with Midnight Black Metallic roof¹ with available Technology Package.
Below: RAV4 TRD Off-Road shown in Magnetic Gray Metallic with Ice Edge roof.¹
Bottom: RAV Prime XSE shown in Supersonic Red with Midnight Black Metallic roof.¹

Hybrid powertrain with 219 net horsepower

RAV4 Hybrid's dual electric motors and an Electronically Controlled Continuously Variable Transmission (ECVT) work together to provide impressive acceleration and enhance fuel efficiency on every trip.



Dynamic Torque Vectoring All-Wheel Drive (TV-AWD)

Available on gas models, this AWD system helps enhance responsiveness and stability by sending up to 50 percent of the power to the rear and then further distributing more power to the wheel that needs it most.



Plug-in performance

Unleash the immediate power of RAV4 Prime. With a 5.7-second 0-60 time⁶, this SUV will get you going in no time. The advanced gas/electric powertrain delivers the power you want when you want it, while still delivering a smooth, comfortable ride.

See numbered footnotes in Disclosures section.

Amplify your drive.

Take advantage of smarter and convenient technologies designed to simplify your everyday life. From a suite of services that are there for you 24/7 to an immersive audio multimedia system, you can stay connected to your world.



Connected Services

Our available suite of Connected Services⁷ provides added convenience and peace of mind.

- ✓ **Safety Connect[®]**
Emergency SOS assistance and 24/7 Toyota Roadside Assistance.^{8,9}
- ✓ **Service Connect**
Get personalized maintenance updates and vehicle health reports.¹⁰
- ✓ **Remote Connect**
Start, lock/unlock your doors and more, using your compatible smart device.¹¹
- ✓ **Wi-Fi Connect**
Turn your Toyota into a hotspot with 4G connectivity.¹²
- ✓ **Destination Assist**
24/7 live agent assistance to locate your next destination.¹³

To view included trial details, please visit toyota.com/connected-services.

Audio Multimedia

Make every drive more personal. By utilizing your vehicle's touchscreen display and audio multimedia capabilities, you'll always have access to what you want. Whether it's listening to your favorite playlist or finding the most scenic route to your destination, you'll enjoy the latest in connectivity and technologies that are all about you.



Apple CarPlay[®]

Bring along a familiar face. With Apple CarPlay^{®14} compatibility, you can use your compatible iPhone^{®15} with the audio multimedia system to get directions, make calls, send and receive messages, and listen to music — all while staying focused on your commute.



Android Auto[™]

Stay connected on the road. By pairing your compatible Android^{™16} phone with the audio multimedia system, Android Auto^{™17} lets you access your Google Assistant, get real-time traffic alerts, make and receive phone calls, listen to your favorite soundtrack and more.



SiriusXM[®] All Access 3-month trial subscription

Enjoy listening to what you want to hear. With SiriusXM^{®18} you get the deepest variety of ad-free music, more sports coverage than anywhere else, exclusive talk channels, every kind of comedy, and the most complete news coverage.¹⁹



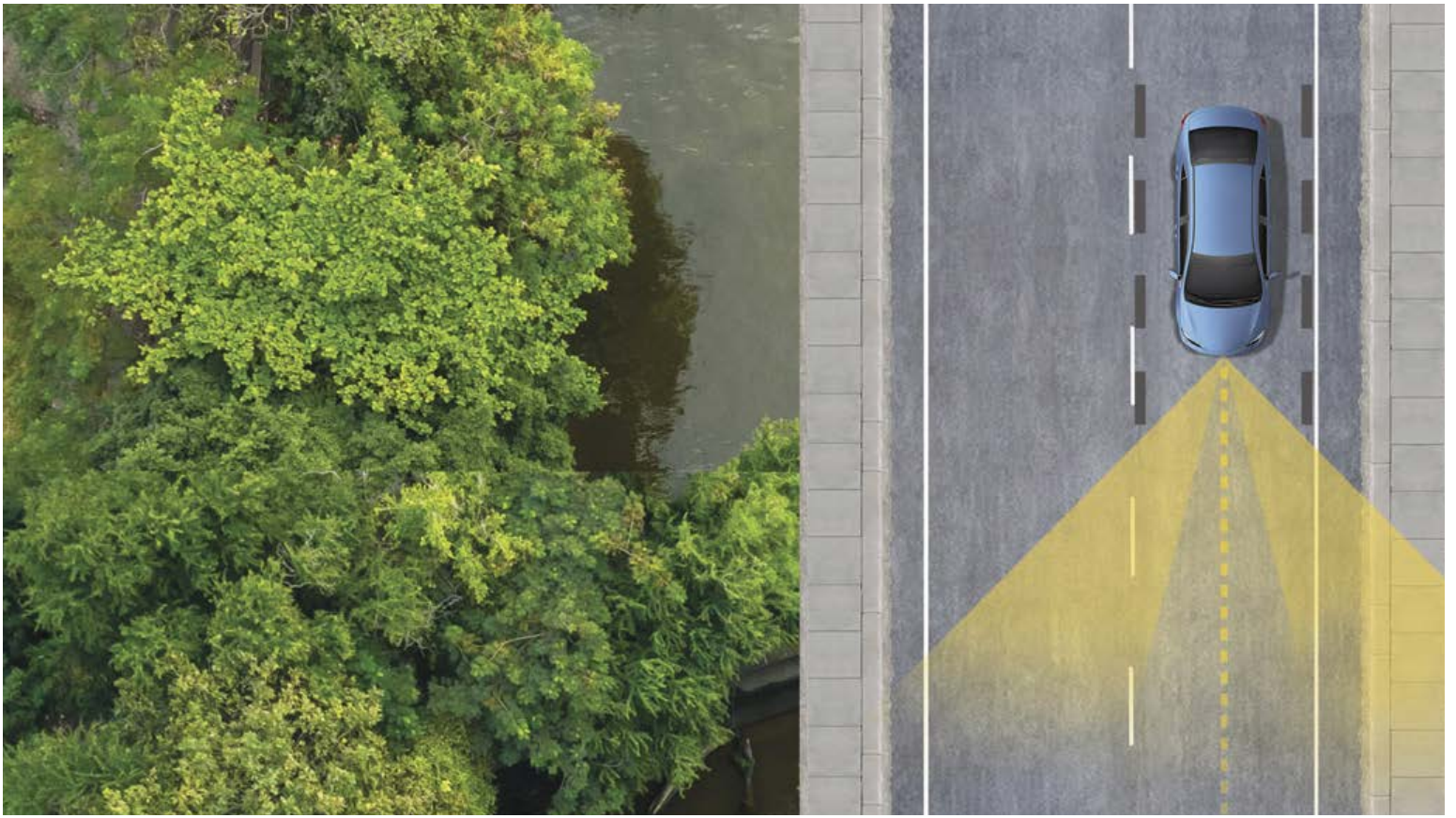
Amazon Alexa

Almost anywhere the road takes you, Amazon Alexa²⁰ connectivity follows. With a smartphone connection and the Toyota+Alexa app, all you have to do is ask Alexa to play music, listen to audiobooks, hear the news, check weather, control smart-home devices and more.



JBL[®]

Feel the difference and hear the truth. Designed specifically for Toyota, JBL^{®21} finely tunes each speaker to the interior of the vehicle. Just turn up the volume to hear the crisp, rich, vibrant sound come through.



TOYOTA SAFETY SENSE™ 2.0 (TSS 2.0)

Peace of mind comes standard.

Toyota Safety Sense™ 2.0 (TSS 2.0)²² is a bundle of active safety features included on many new Toyota vehicles at no additional cost. These innovative features were designed to help protect you and your passengers from harm.



Pre-Collision System with Pedestrian Detection²³



Full-Speed Range Dynamic Radar Cruise Control²⁴



Lane Departure Alert with Steering Assist²⁵



Automatic High Beams²⁶



Lane Tracing Assist²⁷



Road Sign Assist²⁸

RAV4 MODELS



LE

Includes these key features

Mechanical/Performance

- ✓ 2.5L 4-Cylinder engine with 203hp
- ✓ Direct Shift 8-speed Automatic Transmission
- ✓ Normal, ECO and Sport drive modes
- ✓ Front-Wheel Drive (FWD)
- ✓ Available All-Wheel Drive (AWD) with Multi-Terrain Select (MTS)
- ✓ Up to 27 city/35 highway/30 combined EPA-est. mpg²

Exterior Features

- ✓ Multi-LED headlights with black bezels
- ✓ LED Daytime Running Lights (DRL)
- ✓ LED taillights and stoplights
- ✓ Black hexagon-patterned bar front grille
- ✓ Power outside mirrors with folding feature
- ✓ Low-profile black-painted roof rails
- ✓ Dual chrome exhaust tips
- ✓ 17-in. steel wheels with silver 6-spoke wheel covers

Interior Features

- ✓ Seating for five
- ✓ Climate control system
- ✓ Fabric-trimmed seats
 - 6-way adjustable front driver's seat;
 - 4-way adjustable front passenger seat
 - 60/40 split reclining fold-flat rear seat
- ✓ 4.2-in Multi-Information Display (MID)
- ✓ One USB media port²⁹

Audio Multimedia

Audio includes:

- ✓ 7-in. touchscreen with six speakers
- ✓ Android Auto^{TM17} & Apple CarPlay^{®14} compatible
- ✓ SiriusXM^{®18} with 3-month All Access trial subscription¹⁹
- ✓ Connected Services⁷ with Safety Connect^{®8} trial⁵³

Safety Features

- ✓ Toyota Safety SenseTM 2.0 (TSS 2.0)²²
- ✓ Star Safety SystemTM
- ✓ Eight airbags³⁰

Options and Packages

- ✓ Blind Spot Monitor (BSM)³¹ with Rear Cross-Traffic Alert (RCTA)³²
- ✓ Rear cargo area cover



LE Hybrid

Adds to or replaces features offered on LE

Mechanical/Performance

- ✓ Hybrid engine: 2.5L 4-Cylinder with 219 combined net hp
- ✓ Electronically controlled Continuously Variable Transmission with sequential shift mode
- ✓ Electronic On-Demand All-Wheel Drive (AWD)
- ✓ Drive mode dial with Normal, ECO and Sport Drive modes
- ✓ TRAIL and EV Mode³³ select buttons
- ✓ 41 city/38 highway/40 combined EPA-est. mpg²

Exterior Features

- ✓ Active grille shutters
- ✓ 17-in. 5-spoke silver alloy wheels

Interior Features

- ✓ Dual zone automatic climate control system with rear-seat vents
- ✓ 4.2-in Multi-Information Display (MID) with hybrid power meter

Audio Multimedia

Audio includes:

- ✓ 7-in. touchscreen with six speakers
- ✓ Android Auto^{TM17} & Apple CarPlay^{®14} compatible
- ✓ SiriusXM^{®18} with 3-month All Access trial subscription¹⁹
- ✓ Connected Services⁷ with Safety Connect^{®8} trial⁵³

Safety Features

- ✓ Toyota Safety SenseTM 2.0 (TSS 2.0)²²
- ✓ Star Safety SystemTM
- ✓ Eight airbags³⁰

Options and Packages

- ✓ Blind Spot Monitor (BSM)³¹ with Rear Cross-Traffic Alert (RCTA)³²
- ✓ Rear cargo area cover



XLE

Adds to or replaces features offered on LE

Mechanical/Performance

- ✓ Available All-Wheel Drive (AWD) with Multi-Terrain Select (MTS)
- ✓ Up to 28 city/35 highway/30 combined EPA-est. mpg²

Exterior Features

- ✓ Integrated fog lights
- ✓ Color-keyed heated power outside mirrors with turn signal and blind spot warning³¹ indicators, and folding feature
- ✓ 17-in. 5-spoke silver alloy wheels

Interior Features

- ✓ Dual zone automatic climate control with rear-seat vents
- ✓ Fabric-trimmed seats with embossed polygon-design seat inserts
 - 8-way adjustable driver's seat with lumbar support
- ✓ Smart Key System³⁴ on front doors and liftgate³⁵ with Push Button Start
- ✓ One USB media port²⁹ and four USB charge ports²⁹
- ✓ Rear cargo area cover

Audio Multimedia

Audio includes:

- ✓ 7-in. touchscreen with six speakers
- ✓ Android Auto^{TM17} & Apple CarPlay^{®14} compatible
- ✓ SiriusXM^{®18} with 3-month All Access trial subscription¹⁹
- ✓ Connected Services⁷ with Safety Connect^{®8} trial⁵³

Safety Features

- ✓ Toyota Safety SenseTM 2.0 (TSS 2.0)²²
- ✓ Star Safety SystemTM
- ✓ Eight airbags³⁰
- ✓ Blind Spot Monitor (BSM)³¹ with Rear Cross-Traffic Alert (RCTA)³²

Options and Packages

- ✓ XLE Weather Package includes:
 - Heated leather-trimmed steering wheel
 - Heated front seats
 - Rain-sensing variable intermittent windshield wipers with de-icer function
- ✓ XLE Convenience Package includes:
 - Height-adjustable power liftgate³⁵ with jam protection
 - Power tilt/slide moonroof with one-touch open/close
- ✓ Audio Plus includes:
 - 8-in. touchscreen
 - Service Connect¹⁰ with 10-year trial³⁶
 - Remote Connect¹¹ with 1-year trial³⁷

RAV4 MODELS



XLE Hybrid

Adds to or replaces features offered on LE Hybrid

Mechanical/Performance

- ✓ 41 city/38 highway/40 combined EPA-est. mpg²

Exterior Features

- ✓ LED projector headlights with chrome bezels and auto on/off feature
- ✓ LED Daytime Running Lights (DRL) accent lighting
- ✓ Integrated fog lights
- ✓ Color-keyed outside door handles with front-row touch sensors
- ✓ Color-keyed heated power outside mirrors with turn signal and blind spot warning³¹ indicators, and folding feature

Interior Features

- ✓ Dual zone automatic climate control with rear-seat vents
- ✓ Fabric-trimmed seats with embossed polygon-design seat inserts
 - 8-way adjustable driver's seat with lumbar support
- ✓ Smart Key System³⁴ on front doors and liftgate with Push Button Start
- ✓ One USB media port²⁹ and four USB charge ports²⁹
- ✓ Rear cargo area cover

Audio Multimedia

Audio includes:

- ✓ 7-in. touchscreen with six speakers
- ✓ Android Auto^{TM17} & Apple CarPlay^{®14} compatible
- ✓ SiriusXM^{®18} with 3-month All Access trial subscription¹⁹
- ✓ Connected Services⁷ with Safety Connect^{®8} trial⁵³

Safety Features

- ✓ Toyota Safety SenseTM 2.0 (TSS 2.0)²²
- ✓ Star Safety SystemTM
- ✓ Eight airbags³⁰
- ✓ Blind Spot Monitor (BSM)³¹ with Rear Cross-Traffic Alert (RCTA)³²

Options and Packages

- ✓ XLE Weather Package includes:
 - Heated leather-trimmed steering wheel
 - Heated front seats
 - Rain-sensing variable intermittent windshield wipers with de-icer function
- ✓ XLE Convenience Package includes:
 - Height-adjustable power liftgate with jam protection
 - Power tilt/slide moonroof with one-touch open/close
- ✓ Audio Plus includes:
 - 8-in. touchscreen
 - Service Connect¹⁰ with 10-year trial³⁶
 - Remote Connect¹¹ with 1-year trial³⁷



XLE Premium

Adds to or replaces features offered on XLE

Mechanical/Performance

- ✓ Available All-Wheel Drive (AWD) with Multi-Terrain Select (MTS)
- ✓ Up to 28 city/35 highway/30 combined EPA-est. mpg²

Exterior Features

- ✓ Power tilt/slide moonroof with one-touch open/close
- ✓ Power liftgate with jam protection
- ✓ 19-in. multi-spoke Super Chrome-finished alloy wheels

Interior Features

- ✓ SofTex[®]-trimmed³ seats
 - 8-way power-adjustable driver's seat with lumbar support
- ✓ Leather-trimmed steering wheel
- ✓ Dual zone automatic climate control system, front center-vent flow controls and rear-seat vents

Audio Multimedia

- ✓ Audio includes:
 - 7-in. touchscreen with six speakers
 - Android Auto^{TM17} & Apple CarPlay^{®14} compatible
 - SiriusXM^{®18} with 3-month All Access trial subscription¹⁹
 - Connected Services⁷ with Safety Connect^{®8} trial⁵³

Safety Features

- ✓ Toyota Safety SenseTM 2.0 (TSS 2.0)²²
- ✓ Star Safety SystemTM
- ✓ Eight airbags³⁰
- ✓ Blind Spot Monitor (BSM)³¹ with Rear Cross-Traffic Alert (RCTA)³²

Options and Packages

- ✓ XLE Premium Grade Weather Package includes:
 - Heated leather-trimmed steering wheel
 - Heated front seats
 - 8-way power-adjustable driver's seat with two-position memory function and lumbar support
 - Rain-sensing variable intermittent windshield wipers with de-icer function
- ✓ XLE Premium Grade Technology Package
 - Front and Rear Parking Assist with Automatic Braking (PA w/AB)³⁸
 - Digital display rearview mirror with HomeLink^{®39} universal transceiver
 - Qi-compatible wireless smartphone charging⁴⁰
- ✓ Audio Plus includes:
 - 8-in. touchscreen with 11 JBL^{®21} speakers including subwoofer and amplifier
 - Service Connect¹⁰ with 10-year trial³⁶
 - Remote Connect¹¹ with 1-year trial³⁷



XLE Premium Hybrid

Adds to or replaces features offered on XLE Hybrid

Mechanical/Performance

- ✓ 41 city/38 highway/40 combined EPA-est. mpg²

Exterior Features

- ✓ Power tilt/slide moonroof with one-touch open/close
- ✓ Power liftgate with jam protection
- ✓ 18-in. 5-spoke Super Chrome-finished alloy wheels

Interior Features

- ✓ Dual zone automatic climate control system, front center-vent flow controls, and rear-seat vents
- ✓ SofTex[®]-trimmed³ seats
 - 8-way power-adjustable driver's seat with lumbar support
- ✓ Leather-trimmed steering wheel

Audio Multimedia

- ✓ Audio includes:
 - 7-in. touchscreen with six speakers
 - Android Auto^{TM17} & Apple CarPlay^{®14} compatible
 - SiriusXM^{®18} with 3-month All Access trial subscription¹⁹
 - Connected Services⁷ with Safety Connect^{®8} trial⁵³

Safety Features

- ✓ Toyota Safety SenseTM 2.0 (TSS 2.0)²²
- ✓ Star Safety SystemTM
- ✓ Eight airbags³⁰
- ✓ Blind Spot Monitor (BSM)³¹ with Rear Cross-Traffic Alert (RCTA)³²

Options and Packages

- ✓ XLE Premium Grade Weather Package includes:
 - Heated leather-trimmed steering wheel
 - Heated front seats
 - 8-way power-adjustable driver's seat with two-position memory function and lumbar support
 - Rain-sensing variable intermittent windshield wipers with de-icer function
- ✓ XLE Premium Hybrid Grade Technology Package
 - Front and Rear Parking Assist with Automatic Braking (PA w/AB)³⁸
 - Digital display rearview mirror with HomeLink^{®39} universal transceiver
 - Qi-compatible wireless smartphone charging⁴⁰
- ✓ Audio Plus includes:
 - 8-in. touchscreen with 11 JBL^{®21} speakers including subwoofer and amplifier
 - Service Connect¹⁰ with 10-year trial³⁶
 - Remote Connect¹¹ with 1-year trial³⁷

RAV4 MODELS



Adventure

Adds to or replaces features offered on XLE

Mechanical/Performance

- ✓ Dynamic Torque-Vectoring All-Wheel Drive (TV-AWD) with Rear Driveline Disconnect
- ✓ Multi-Terrain Select (MTS) (MUD & SAND, ROCK & DIRT, and SNOW modes)
- ✓ 3500-lb. towing capacity⁴¹
- ✓ 25 city/33 highway/28 combined EPA-est. mpg²

Exterior Features

- ✓ Unique split-bar front upper grille
- ✓ Active grille shutters
- ✓ Larger black overfenders
- ✓ Unique raised roof rails
- ✓ Black RAV4 and Adventure badging with matte-black accents
- ✓ 19-in. split 5-spoke alloy wheels with matte black accents

Interior Features

- ✓ SofTex[®]-trimmed³ seats with orange accents and stitching
- ✓ Orange-accented interior, including stitching on dash, doors and seats
- ✓ 7-in. digital Multi-Information Display (MID)
- ✓ One 120V/100W deck-mounted power outlet⁴²

Audio Multimedia

- ✓ Audio Plus includes:
 - 8-in. touchscreen with six speakers
 - Android Auto^{™17} & Apple CarPlay^{®14} compatible
 - SiriusXM^{®18} with 3-month All Access trial subscription¹⁹
 - Connected Services⁷ with Safety Connect^{®8} trial⁵³

Safety Features

- ✓ Toyota Safety Sense[™] 2.0 (TSS 2.0)²²
- ✓ Star Safety System[™]
- ✓ Eight airbags³⁰
- ✓ Blind Spot Monitor (BSM)³¹ with Rear Cross-Traffic Alert (RCTA)³²

Options and Packages

- ✓ Adventure Weather Package includes:
 - Heated steering wheel
 - Perforated heated and ventilated front seats
 - Rain-sensing variable intermittent windshield wipers with de-icer function
- ✓ Adventure Grade Convenience Package includes:
 - Height-adjustable power liftgate³⁵ with jam protection
 - Power tilt/slide moonroof with one-touch open/close
 - Two-tone exterior color



TRD Off-Road

Adds to or replaces features offered on Adventure

Mechanical/Performance

- ✓ Dynamic Torque-Vectoring All-Wheel Drive (TV-AWD) with Rear Driveline Disconnect
- ✓ Multi-Terrain Select (MTS) (MUD & SAND, ROCK & DIRT, and SNOW modes)
- ✓ TRD-tuned suspension
- ✓ 3500-lb. towing capacity⁴¹
- ✓ 25 city/32 highway/27 combined EPA-est. mpg²

Exterior Features

- ✓ Integrated LED fog lights
- ✓ Black rear bumper with metallic gray insert
- ✓ Power tilt/slid moonroof with one-touch open/close
- ✓ Power liftgate³⁵ with jam protection
- ✓ Black RAV4 and TRD Off-Road badging
- ✓ Red-painted coil springs
- ✓ TRD-stamped stainless steel front skid plate
- ✓ 18-in. 6-spoke matte-black TRD flow-formed alloy wheels
- ✓ Falken WILDPEAK all-terrain tires

Interior Features

- ✓ SofTex[®]-trimmed³ seats with red accents and stitching and TRD stitching in front headrests
- ✓ Red-accented interior, including red stitching on dash, doors and seat
- ✓ TRD all-weather floor mats⁴³ and cargo liner

Audio Multimedia

- ✓ Audio Plus includes:
 - 8-in. touchscreen with six speakers
 - Android Auto^{™17} & Apple CarPlay^{®14} compatible
 - SiriusXM^{®18} with 3-month All Access trial subscription¹⁹
 - Connected Services⁷ with Safety Connect^{®8} trial⁵³

Safety Features

- ✓ Toyota Safety Sense[™] 2.0 (TSS 2.0)²²
- ✓ Star Safety System[™]
- ✓ Eight airbags³⁰
- ✓ Blind Spot Monitor (BSM)³¹ with Rear Cross-Traffic Alert (RCTA)³²

Options and Packages

- ✓ TRD Off-Road Weather Package includes:
 - Heated steering wheel
 - Perforated heated and ventilated front seats
 - Rain-sensing variable intermittent windshield wipers with de-icer function
- ✓ TRD Off-Road Technology Package includes:
 - Front and Rear Parking Assist with Automatic Braking (PA w/AB)³⁸
 - Bird's Eye View Camera⁴⁴ with Perimeter Scan, Overhead 360-degree view in low-speed drive and reverse, and curb view
 - Digital display rearview mirror with HomeLink^{®39} universal transceiver
 - Qi-compatible wireless smartphone charging⁴⁰
- ✓ Premium Audio includes:
 - 8-in. touchscreen and 11 JBL^{®21} speakers including subwoofer and amplifier
 - Dynamic Navigation⁴⁵ with 3-year trial⁴⁶
 - Two-tone exterior color



XSE Hybrid

Adds to or replaces features offered on XLE Hybrid

Mechanical/Performance

- ✓ Sport-tuned suspension
- ✓ 41 city/38 highway/40 combined EPA-est. mpg²

Exterior Features

- ✓ Dark gray metallic-colored hexagon-patterned front grille
- ✓ Black-painted lower front bumper, fog light trim, overfenders, outside mirrors, rocker panels, and rear bumper with metallic gray insert
- ✓ Two-tone exterior color with Midnight Black Metallic roof¹
- ✓ Power tilt/slide moonroof with one-touch open/close
- ✓ 18-in. 5-spoke black-painted alloy wheels

Interior Features

- ✓ SofTex[®]-trimmed³ seats with sporty blue stitching and fabric seat inserts
 - Heated front seats
- ✓ Blue-accented interior including blue stitching on dash, doors and seats
- ✓ Blue ambient interior lighting
- ✓ 7-in. Multi-Information Display (MID) with hybrid power meter
- ✓ Digital rearview mirror with HomeLink^{®39} universal transceiver
- ✓ Black headliner

Audio Multimedia

- ✓ Audio Plus includes:
 - 8-in. touchscreen with six speakers
 - Android Auto^{™17} & Apple CarPlay^{®14} compatible
 - SiriusXM^{®18} with 3-month All Access trial subscription¹⁹
 - Connected Services⁷ with Safety Connect^{®8} trial⁵³

Safety Features

- ✓ Toyota Safety Sense[™] 2.0 (TSS 2.0)²²
- ✓ Star Safety System[™]
- ✓ Eight airbags³⁰
- ✓ Blind Spot Monitor (BSM)³¹ with Rear Cross-Traffic Alert (RCTA)³²

Options and Packages

- ✓ XSE Weather Package includes:
 - Heated steering wheel
 - Rain-sensing variable intermittent windshield wipers with de-icer function
- ✓ XSE Technology Package includes:
 - Front and Rear Parking Assist with Automatic Braking (PA w/AB)³⁸
 - Qi-compatible wireless smartphone charging⁴⁰
- ✓ Premium Audio includes:
 - 8-in. touchscreen and 11 JBL^{®21} speakers including subwoofer and amplifier
 - Dynamic Navigation⁴⁵ with 3-year trial⁴⁶
 - Panoramic glass roof with front power tilt/slide moonroof

RAV4 MODELS



Limited

Adds to or replaces features offered on XLE Premium

Mechanical/Performance

- ✓ Available Dynamic Torque-Vectoring All-Wheel Drive (TV-AWD) with Rear Driveline Disconnect
- ✓ Available Multi-Terrain Select (MTS) (MUD & SAND, ROCK & DIRT, and SNOW modes)
- ✓ Up to 27 city/35 highway/30 combined EPA-est. mpg²

Exterior Features

- ✓ Dark gray metallic-colored hexagon patterned front grille
- ✓ Chrome-accented color keyed outside door handles with front-row touch sensors
- ✓ Puddle lights

Interior Features

- ✓ SofTex[®]-trimmed³ seats
 - Heated front seats
- ✓ Dark-brown-accented interior, including dark-brown stitching on dash, doors and seats
- ✓ Blue ambient interior lighting
- ✓ 7-in. digital Multi-Information Display (MID)
- ✓ Digital rearview mirror with HomeLink^{®39} universal transceiver

Audio Multimedia

- ✓ Premium Audio includes:
 - 8-in. touchscreen and 11 JBL^{®21} speakers including subwoofer and amplifier
 - Dynamic Navigation⁴⁵ with 3-year trial⁴⁶
 - Android Auto^{™17} & Apple CarPlay^{®14} compatible
 - SiriusXM^{®18} with 3-month All Access trial subscription¹⁹
 - Connected Services⁷ with Safety Connect^{®8} trial⁵³

Safety Features

- ✓ Toyota Safety Sense[™] 2.0 (TSS 2.0)²²
- ✓ Star Safety System[™]
- ✓ Eight airbags³⁰
- ✓ Blind Spot Monitor (BSM)³¹ with Rear Cross-Traffic Alert (RCTA)³²
- ✓ Front and Rear Parking Assist with Automated Braking (PA w/AB)³⁸

Options and Packages

- ✓ Limited Grade Weather Package includes:
 - Heated steering wheel
 - Perforated heated and ventilated front seats
 - Rear outboard passenger heated seating with perforated inserts
 - Rain-sensing variable intermittent windshield wipers with de-icer function
- ✓ Limited Grade Advanced Technology Package includes:
 - Smart Key System³⁴ on all doors and liftgate³⁵
 - Height-adjustable foot-activated power liftgate³⁵ with jam protection
 - Bird's Eye View Camera⁴⁴ with Perimeter Scan, Overhead 360-degree view in low-speed drive and reverse, and curb view
 - Qi-compatible wireless smartphone charging⁴⁰
 - Panoramic glass roof with front power tilt/slide moonroof



Limited Hybrid

Adds to or replaces features offered on XLE Premium Hybrid

Mechanical/Performance

- ✓ 41 city/38 highway/40 combined EPA-est. mpg²

Exterior Features

- ✓ Dark gray metallic-colored hexagon patterned front grille
- ✓ Chrome-accented color keyed outside door handles with front-row touch sensors
- ✓ Puddle lights

Interior Features

- ✓ SofTex[®]-trimmed³ seats
 - Heated front seats
- ✓ Dark-brown-accented interior, including dark-brown stitching on dash, doors and seats
- ✓ Blue ambient interior lighting
- ✓ 7-in. digital Multi-Information Display (MID) with hybrid power meter
- ✓ Digital rearview mirror with HomeLink^{®39} universal transceiver

Audio Multimedia

- ✓ 8-in. touchscreen and 11 JBL^{®21} speakers including subwoofer and amplifier
- ✓ Dynamic Navigation⁴⁵ with 3-year trial⁴⁶
- ✓ Android Auto^{™17} & Apple CarPlay^{®14} compatible
- ✓ SiriusXM^{®18} with 3-month All Access trial subscription¹⁹
- ✓ Connected Services⁷ with Safety Connect^{®8} trial⁵³

Safety Features

- ✓ Toyota Safety Sense[™] 2.0 (TSS 2.0)²²
- ✓ Star Safety System[™]
- ✓ Eight airbags³⁰
- ✓ Blind Spot Monitor (BSM)³¹ with Rear Cross-Traffic Alert (RCTA)³²
- ✓ Front and Rear Parking Assist with Automatic Braking (PA w/AB)³⁸

Options and Packages

- ✓ Limited Grade Weather Package includes:
 - Heated steering wheel
 - Perforated heated and ventilated front seats
 - Rear outboard passenger heated seating with perforated inserts
 - Rain-sensing variable intermittent windshield wipers with de-icer function
- ✓ Limited Grade Advanced Technology Package includes:
 - Smart Key System³⁴ on all doors and liftgate³⁵
 - Height-adjustable foot-activated power liftgate³⁵ with jam protection
 - Bird's Eye View Camera⁴⁴ with Perimeter Scan, Overhead 360-degree view in low-speed drive and reverse, and curb view
 - Qi-compatible wireless smartphone charging⁴⁰
 - Panoramic glass roof with front power tilt/slide moonroof
 - Adaptive Front Headlight System — LED projector headlights

RAV4 MODELS



Prime SE

Adds to or replaces features offered on XLE Hybrid

Mechanical/Performance

- ✓ 2.5L 4-Cylinder Plug-in Hybrid system with 302 net hp
- ✓ Electronically-controlled Continuously Variable Transmission with sequential shift mode
- ✓ Electronic On-Demand All-Wheel Drive (AWD)
- ✓ Drive mode dial with SPORT, ECO and NORMAL modes, TRAIL mode, Auto EV/HV mode, and HV/EV Charge Hold
- ✓ 40 city/36 highway/38 combined EPA-est. mpg (hybrid mode)⁴
- ✓ 94 MPGe⁴
- ✓ 42 miles electric driving range⁵

Exterior Features

- ✓ LED projector headlights with chrome bezels and auto on/off feature
- ✓ LED Daytime Running Lights (DRL) accent lighting
- ✓ Black diamond-patterned bar front grille
- ✓ Silver-painted front lower spoiler
- ✓ Color-keyed outside door handles with front-row touch sensors
- ✓ Color-keyed heated power outside mirrors with turn signal and blind spot warning³¹ indicators, and folding feature
- ✓ Black-painted lower front bumper, overfenders, rocker panels, and rear bumper with black insert
- ✓ Height-adjustable power liftgate with jam protection
- ✓ 18-in. 5-spoke black-painted and machined sport alloy wheels

Interior Features

- ✓ Dual zone automatic climate control system with rear-seat vents
- ✓ Fabric-trimmed seats with sporty red stitching and embossed seat inserts
 - Heated front seats
- ✓ 7-in. Multi-Information Display (MID) with hybrid system indicator
- ✓ Smart Key System³⁴ on front doors and liftgate with Push Button Start
- ✓ Leather-trimmed steering wheel
- ✓ Red-accented interior, including red stitching on dash and seats
- ✓ Black headliner

Audio Multimedia

- ✓ Audio includes:
 - 8-in. touchscreen with six speakers
 - Android Auto^{TM17} & Apple CarPlay^{®14} compatible
 - SiriusXM^{®18} with 3-month All Access trial subscription¹⁹
 - Connected Services⁷ with Safety Connect^{®8} trial⁵³

Safety Features

- ✓ Toyota Safety SenseTM 2.0 (TSS 2.0)²²
- ✓ Star Safety SystemTM
- ✓ Eight airbags³⁰
- ✓ Blind Spot Monitor (BSM)³¹ with Rear Cross-Traffic Alert (RCTA)³²

Options and Packages

- ✓ Prime SE Weather and Moonroof Package includes:
 - Heated leather-trimmed steering wheel
 - Rear outboard passenger heated seating
 - Rain-sensing variable intermittent windshield wipers with de-icer function
 - Power tilt/slide moonroof with one-touch open/close



Prime XSE

Adds to or replaces features offered on Prime SE

Mechanical/Performance

- ✓ 2.5L 4-Cylinder Plug-in Hybrid system with 302 net hp
- ✓ Electronic On-Demand All-Wheel Drive (AWD)
- ✓ 40 city/36 highway/38 combined EPA-est. mpg (hybrid mode)⁴
- ✓ 94 MPGe⁴
- ✓ 42 miles electric driving range⁵

Exterior Features

- ✓ Vertical LED accent lights
- ✓ Black-painted outside mirrors
- ✓ Power tilt/slide moonroof with one-touch open/close
- ✓ 19-in. 5-spoke black painted and machined sport alloy wheels

Interior Features

- ✓ Dual zone automatic climate control system with front center vent flow controls, and rear-seat vents
- ✓ SofTex[®]-trimmed³ seats with sporty red stitching and fabric seat inserts
- ✓ Steering wheel-mounted paddle shifters
- ✓ Blue ambient interior lighting
- ✓ Qi-compatible wireless smartphone charging⁴⁰

Audio Multimedia

- ✓ Audio Plus includes:
 - 9-in. touchscreen with six speakers
 - Android Auto^{TM17} & Apple CarPlay^{®14} compatible
 - SiriusXM^{®18} with 3-month All Access trial subscription¹⁹
 - Connected Services⁷ with Safety Connect^{®8} trial⁵³

Safety Features

- ✓ Toyota Safety SenseTM 2.0 (TSS 2.0)²²
- ✓ Star Safety SystemTM
- ✓ Eight airbags³⁰
- ✓ Blind Spot Monitor (BSM)³¹ with Rear Cross-Traffic Alert (RCTA)³²

Options and Packages

- ✓ Prime XSE Weather Package includes:
 - Heated leather-trimmed steering wheel — rain-sensing variable intermittent windshield wipers with de-icer function
- ✓ Premium Package includes:
 - 10-in. color Head-Up Display (HUD)
 - Panoramic glass roof with front power tilt/slide moonroof
 - Bird's Eye View Camera⁴⁴ with Perimeter Scan, Overhead 360-degree view in low-speed drive and reverse, and curb view
 - SofTex[®]-trimmed³ seats with sporty red accents and stitching
 - Heated and ventilated front seats; heated rear outboard seats
 - 8-way power-adjustable driver's seat with two-position memory function
 - 4-way power-adjustable front passenger seat
 - Digital rearview mirror with HomeLink^{®39} universal transceiver
 - Smart Key System³⁴ on all doors
 - One 120V/1500W AC power outlet in cargo area⁴⁷
 - Adaptive Front Headlight System with LED projector headlights
 - Height-adjustable, foot-activated power liftgate³⁵ with jam protection
 - Front and Rear Parking Assist with Automatic Braking (PA w/AB)³⁸
- ✓ Premium Audio includes:
 - 9-in. touchscreen and 11 JBL^{®21} speakers Dynamic Navigation⁴⁵ with 3-year trial⁴⁶

RAV4 COLORS & TRIMS



Midnight Black Metallic



Blueprint



Blue Flame



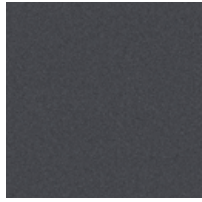
Lunar Rock



Ruby Flare Pearl¹



Supersonic Red¹



Magnetic Gray Metallic



Silver Sky Metallic



Blizzard Pearl¹



Super White

Available Ice Edge roof¹



Magnetic Gray Metallic, Lunar Rock, Midnight Black Metallic, Blue Flame

Available Midnight Black Metallic roof



Blizzard Pearl¹, Silver Sky Metallic, Magnetic Gray Metallic, Blueprint, Supersonic Red¹

LE fabric shown in

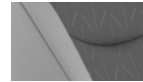


Black



Nutmeg

XLE fabric trim shown in Black

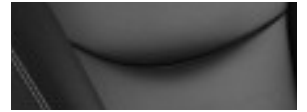


Light Grey



Nutmeg

XLE Premium/Limited SofTex^{®3} shown in Black



Light Grey



Nutmeg

Adventure grade SofTex^{®3}

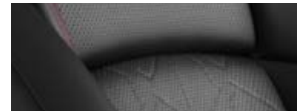


Black



Mocha

TRD Off-Road SofTex^{®3} shown in Black



XSE Hybrid SofTex^{®3} shown in Black/Blue



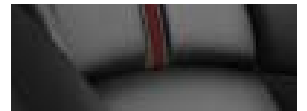
Prime SE fabric shown in Black/Red



Prime XSE SofTex^{®3} shown in Black/Red



Prime XSE Premium SofTex^{®3} shown in Black/Red



RAV4 WHEELS



LE
17-in. steel wheel with
silver 6-spoke wheel cover



XLE/LE Hybrid/XLE Hybrid
17-in. 5-spoke
silver alloy wheel



Adventure grade
19-in. split 5-spoke
alloy wheel with
matte black accents



TRD Off-Road
18-in. 6-spoke
matte-black TRD flow-formed
alloy wheel



XSE Hybrid
18-in. 5-spoke
black-painted sport
alloy wheel



Limited/XLE Premium
19-in. multi-spoke
Super Chrome-finished
alloy wheel



Limited Hybrid
18-in. 5-spoke
Super Chrome-finished sport
alloy wheel



Prime
18-in. 5-spoke black-painted
and machined sport
alloy wheel



Prime
19-in. 5-spoke black-painted
and machined sport
alloy wheel

RAV4 ACCESSORIES

This is a great way to add extra personality to your RAV4. Not every accessory is available in your area, so for a complete list of accessories, go to toyota.com/rav4/accessories.



In-vehicle safe by Console Vault®



Body side moldings



All-weather floor liners⁴³



Cargo liner⁴⁸



Doorsill protectors



Roof rack cross bars



Frameless HomeLink³⁹ mirror



Mudguards



Running boards

WARRANTIES

Every Toyota Car, Truck and SUV is built to exceptional standards. And that's not idle boasting. We back it up with these Limited Warranty Coverages:

Basic: 36 months/36,000 miles (all components other than normal wear and maintenance items).

Hybrid-Related Component Coverage: Hybrid-related components, including the battery control module, hybrid control module and inverter with converter, are covered for 8 years/100,000 miles. Refer to applicable *Warranty and Maintenance Guide* for details.

Hybrid Battery: HV battery is covered for 10 years or 150,000 miles, whichever comes first. Warranty coverage is subject to terms and conditions. Refer to applicable *Warranty and Maintenance Guide* for details.

Powertrain: 60 months/60,000 miles (engine, transmission/transaxle, drive system, seatbelts and airbags).

Rust-Through: 60 months/unlimited miles (corrosion perforation of sheet metal).

Emissions: Coverages vary under Federal and California regulations. Refer to applicable *Warranty and Maintenance Guide* for details.

Accessories: For Genuine Toyota Accessories purchased at the time of the new vehicle purchase, the Toyota Accessory Warranty coverage is in effect for 36 months/36,000 miles from the vehicle's in-service date, which is the same coverage as the Toyota New Vehicle Limited Warranty.

For Genuine Toyota Accessories purchased after the new vehicle purchase the coverage is 12 months, regardless of mileage, from the date the accessory was installed on the vehicle, or the remainder of any applicable new vehicle warranty, whichever provides greater coverage.

You may be eligible for transportation assistance if it's necessary that your vehicle be kept overnight for repairs covered under warranty. Please see your authorized Toyota dealership for further details.

For complete details about Toyota's warranties, please visit www.toyota.com, refer to the applicable *Warranty and Maintenance Guide* or see your Toyota dealer.

RAV4 FEATURES⁴⁹

S = Standard O = Optional P = Available as part of a package

Exterior

	LE	LE Hybrid	XLE	XLE Hybrid	XLE Premium	XLE Premium Hybrid	Adventure	TRD Off-Road	XSE Hybrid	Limited	Limited Hybrid	RAV4 Prime SE	RAV4 Prime XSE
17-in. steel wheels with silver 6-spoke wheel covers including temporary spare	S												
17-in. 5-spoke silver alloy wheels including temporary spare		S	S	S									
18-in. 5-spoke Super Chrome-finished sport alloy wheels including temporary spare							S				S		
18-in. 6-spoke matte-black-painted TRD flow-formed alloy wheels with black lug nuts and temporary spare								S					
19-in. multi-spoke Super Chrome alloy wheels including temporary spare					S					S			
19-in. split 5-spoke alloy wheels with matte black-painted accents and temporary spare							S						
18-in. 5-spoke black-painted sport alloy wheels including temporary spare									S				
18-in. 5-spoke black-painted and machined sport alloy wheels including temporary spare												S	
19-in. 5-spoke black-painted and machined sport alloy wheels including temporary spare													S
Multi-LED headlights with black bezels and Automatic High Beams ²⁶	S	S											
Multi-LED headlights with chrome bezels, Automatic High Beams ²⁶ and auto on/off			S		S		S	S		S			
LED projector headlights with chrome bezels, Automatic High Beams ²⁶ and auto on/off				S		S			S		S	S	S
Adaptive Front Headlight System — LED projector headlights with chrome bezels, automatic level and pan controls, Automatic High Beams ²⁶ and auto on/off											P		P
LED Daytime Running Lights (DRL)	S	S	S		S		S	S		S			
LED Daytime Running Lights (DRL)/accent lighting				S		S			S		S	S	S
Integrated fog lights			S	S	S	S				S	S		
Integrated LED fog lights with black trim							S						
Integrated fog lights with black trim									S				
Vertical LED accent lights													S
LED taillights	S	S	S	S	S	S	S	S	S	S	S	S	S
Black hexagon-patterned bar front grille	S	S	S	S	S	S							
Unique split-bar front upper grille							S	S					
Dark gray metallic-colored hexagon-patterned bar front grille									S	S	S		
Black diamond-patterned front grille												S	S
Color-keyed upper front bumper, and black lower front bumper, overfenders and rear bumper	S	S	S	S	S	S							
Unique color-keyed upper and black lower front bumper, larger black overfenders, and black rear bumper with silver insert							S						
Unique color-keyed upper and black lower front bumper, larger black overfenders, and black rear bumper with Magnetic Gray Metallic insert								S					
Color-keyed upper and black-painted lower front bumper, fog light trim, overfenders, mirrors, roof, rocker panels, and rear bumper with metallic gray insert									S				
Color-keyed upper bumper, and black lower front bumper, black overfenders, and rear bumper with metallic gray insert										S	S		
Color-keyed upper and black-painted lower front bumper, overfenders, rocker panels, and rear bumper with black insert												S	
Color-keyed upper and black-painted lower front bumper, overfenders, mirrors, roof, rocker panels, and rear bumper with black insert													S
Silver-painted front lower spoiler												S	S
Two-tone exterior color							O	O	S				S
Black RAV4 and TRD Off-Road badging								S					
Black RAV4 and Adventure badging							S						
Black power outside mirrors with folding feature	S	S											
Color-keyed heated power outside mirrors with turn signal and blind spot warning ³¹ indicators, and folding feature	P	P	S	S	S	S	S					S	

See numbered footnotes in Disclosures section.

RAV4 FEATURES⁴⁹

S = Standard O = Optional P = Available as part of a package

Exterior (continued)

	LE	LE Hybrid	XLE	XLE Hybrid	XLE Premium	XLE Premium Hybrid	Adventure	TRD Off-Road	XSE Hybrid	Limited	Limited Hybrid	RAV4 Prime SE	RAV4 Prime XSE
Black-painted heated power outside mirrors with turn signal and blind spot warning ³¹ indicators, and folding feature							O	S	S				S
Color-keyed heated power outside mirrors with turn signal and blind spot warning ³¹ indicators, puddle lights and folding feature										S	S		
Color-keyed outside door handles	S	S											
Color-keyed outside door handles with touch-sensor lock/unlock feature on front doors			S	S	S	S	S	S	S			S	S
Chrome-accented color-keyed outside door handles with touch-sensor lock/unlock feature on front doors										S	S		
Power tilt/slide moonroof with one-touch open/close			P	P	S	S	P	S	S	S	S	P	S
Low-profile black roof rails	S	S	S	S	S	S			S	S	S	S	S
Unique raised black roof rails							S	S					
Height-adjustable power liftgate ³⁵ with jam protection			P	P	S	S	P	S	S	S	S	S	S
Aerodynamic underbody panels with vortex generators, front and rear wheel spats, and integrated rear spoiler	S		S		S								
Active grille shutters; Aerodynamic underbody panels with vortex generators, front and rear wheel spats, and integrated rear spoiler		S		S		S	S	S	S	S	S		
Dual chrome-tipped exhaust	S	S	S	S	S	S	S	S	S	S	S	S	S
Privacy glass on all rear side, quarter and liftgate windows	S	S	S	S	S	S	S	S	S	S	S	S	S
Acoustic noise-reducing front side windows												S	S
Intermittent windshield wipers and intermittent rear window wiper	S	S											
Variable intermittent windshield wipers and intermittent rear window wiper			S	S	S	S	S	S	S	S	S	S	S
Color-keyed roof-mounted shark-fin antenna	S	S	S	S	S	S	S	S	S	S	S	S	S
Blue-painted shock absorber									S				
Red-painted shock absorber							S						S

Interior

Climate control system with dust and pollen filter	S												
Dual zone automatic climate control system with dust and pollen filter and rear-seat vents		S	S	S								S	
Dual zone automatic climate control system with dust and pollen filter, front center vent flow controls and rear-seat vents					S	S	S	S	S	S	S		S
Qi-compatible wireless smartphone charging ⁴⁰ with charge indicator light					P	P		P	P	P	P		S
Analog speedometer, tachometer, coolant temperature, and fuel gauges; 4.2-in. digital Multi-Information Display (MID) with instrumentation and customizable settings, odometer, tripmeters, clock, outside temperature, rear passenger seatbelt indicators, fuel economy information, trip timer, shift-position and scheduled maintenance indicators, and warning messages	S		S		S								
Digital speedometer and instrumentation with analog tachometer, coolant temperature, and fuel gauges; 7-in. digital Multi-Information Display (MID) with customizable settings, odometer, tripmeters, clock, outside temperature, rear passenger seatbelt indicators, fuel economy information, trip timer, shift-position and scheduled maintenance indicators, and warning messages							S	S		S			
Analog speedometer, hybrid power meter, coolant temperature, and fuel gauges; 4.2-in. digital Multi-Information Display (MID) with instrumentation and customizable settings, odometer, tripmeters, clock, outside temperature, rear passenger seatbelt indicators, hybrid energy monitor, fuel economy information, trip timer, shift-position and scheduled maintenance indicators, and warning messages		S		S		S							
Digital speedometer and instrumentation with analog hybrid power meter, coolant temperature, and fuel gauges; 7-in. digital Multi-Information Display (MID) with customizable settings, odometer, tripmeters, clock, outside temperature, rear passenger seat belt indicators, hybrid energy monitor, fuel economy information, trip timer, shift-position and scheduled maintenance indicators, and warning messages									S		S		

See numbered footnotes in Disclosures section.

RAV4 FEATURES⁴⁹

S = Standard O = Optional P = Available as part of a package

Interior (continued)	LE	LE Hybrid	XLE	XLE Hybrid	XLE Premium	XLE Premium Hybrid	Adventure	TRD Off-Road	XSE Hybrid	Limited	Limited Hybrid	RAV4 Prime SE	RAV4 Prime XSE
Digital speedometer and instrumentation with analog hybrid system indicator, battery level meter and fuel gauge; 7-in digital Multi-Information Display (MID) with customizable settings, odometer, tripmeters, clock, outside temperature, rear passenger seat belt indicators, hybrid energy monitor, battery charge meter, fuel economy information, trip timer, shift-position and scheduled maintenance indicators, and warning messages												S	S
Fabric-trimmed seats; 6-way adjustable front driver's seat; 4-way adjustable front passenger seat with seatback pocket	S	S											
Fabric-trimmed seats with embossed polygonal-design seat inserts; 8-way power-adjustable front driver's seat with lumbar support; 4-way adjustable front passenger seat with seatback pocket			S	S									
Fabric-trimmed seats with sporty red stitching and embossed seat inserts; heated front seats; 8-way power-adjustable front driver's seat with lumbar support; 4-way adjustable front passenger seat with seatback pocket													S
SofTex [®] -trimmed ³ seats; 8-way power-adjustable front driver's seat with lumbar support; 4-way adjustable front passenger seat with seatback pocket					S	S							
SofTex [®] -trimmed ³ seats with orange accents and stitching, and embossed seat inserts; 8-way power-adjustable front driver's seat with lumbar support; 4-way adjustable front passenger seat with seatback pocket							S						
SofTex [®] -trimmed seats ³ with red stitching, embossed seat inserts and TRD stitching in front headrests; 8-way power-adjustable driver's seat with lumbar support; 4-way adjustable front passenger seat with seatback pocket								S					
SofTex [®] -trimmed ³ seats with sporty blue stitching and fabric seat inserts; heated front seats; 8-way power-adjustable front driver's seat with lumbar support; 4-way adjustable front passenger seat with seatback pocket									S				
SofTex [®] -trimmed ³ seats, heated front seats; 8-way power-adjustable driver's seat with two-position memory function and lumbar support; 4-way adjustable front passenger seat with seatback pocket					P	P				S	S		
SofTex [®] -trimmed ³ seats with sporty red stitching and fabric seat inserts; heated front seats; 8-way power-adjustable front driver's seat with lumbar support and seatback pocket; 4-way adjustable front passenger seat with seatback pocket													S
60/40 split reclining fold-flat rear seat with center armrest and cup holders	S	S	S	S	S	S	S	S	S	S	S	S	S
Heated front seating			P	P	P	P			S	S	S	S	S
Black carpet flooring with driver-side footrest	S	S	S	S	S	S	S	S	S	S	S	S	S
Carpet floor mats ⁴³	O	O	O	O	O	O	O	O	O	O	O	O	O
TRD all-weather floor mats ⁴³ and cargo liner								S					
Urethane tilt/telescopic 3-spoke steering wheel with controls for audio, Multi-Information Display (MID), Bluetooth ^{®50} hands-free phone, voice-command, Dynamic Radar Cruise Control (DRCC), ²⁴ Lane Departure Alert (LDA) ²⁵ and Lane Trace Assist (LTA) ²⁷	S	S	S	S									
Leather-trimmed tilt/telescopic 3-spoke steering wheel with silver accent and controls for audio, Multi-Information Display (MID), Bluetooth ^{®50} hands-free phone, voice-command, Dynamic Radar Cruise Control (DRCC), ²⁴ Lane Departure Alert (LDA) ²⁵ and Lane Trace Assist (LTA) ²⁷					S	S	S	S	S	S	S		
Leather-trimmed tilt/telescopic three-spoke steering wheel with silver accent and red-stitching, and controls for audio, Multi-Information Display (MID), Bluetooth ^{®50} hands-free phone, voice-command, Dynamic Radar Cruise Control (DRCC), ²⁴ Lane Departure Alert (LDA) ²⁵ and Lane Trace Assist (LTA) ²⁷													S
Leather-trimmed tilt/telescopic three-spoke steering wheel with silver accent and red-stitching, paddle shifters, and controls for audio, Multi-Information Display (MID), Bluetooth ^{®50} hands-free phone, voice-command, Dynamic Radar Cruise Control (DRCC), ²⁴ Lane Departure Alert (LDA) ²⁵ and Lane Trace Assist (LTA) ²⁷													S

See numbered footnotes in Disclosures section.

RAV4 FEATURES⁴⁹

S = Standard O = Optional P = Available as part of a package

Interior (continued)	LE	LE Hybrid	XLE	XLE Hybrid	XLE Premium	XLE Premium Hybrid	Adventure	TRD Off-Road	XSE Hybrid	Limited	Limited Hybrid	RAV4 Prime SE	RAV4 Prime XSE
Turn signal stalk with headlight controls and one-touch 3-blink lane change turn signals	S	S	S	S	S	S	S	S	S	S	S	S	S
Shift lever with sequential mode	S	S	S	S									
Leather-trimmed shift lever with sequential mode					S	S	S	S	S	S	S	S	S
Steering wheel-mounted paddle shifters													S
Soft-touch dash and armrests, with stitched dash accents	S	S	S	S								S	
Soft-touch dash and armrests, with stitched dash and center console accents, and anti-slip interior door grip					S	S							
Soft-touch dash, door and armrests with stitched dash, door and center console accents, and anti-slip interior door grip							S	S	S	S	S		S
Black in-dash storage trays	S	S	S	S									
Black anti-slip in-dash storage trays					S	S		S					S
Orange-accented interior, including orange stitching on dash, doors and seat, and orange cup holder trim and anti-slip in-dash storage trays							S						
Red-accented interior, including red stitching on dash, doors and seat, and red cup holder trim and black anti-slip in-dash storage trays								S					
Blue-accented interior, including blue stitching on dash, doors and seat, and black anti-slip in-dash storage trays with blue ambient lighting									S				
Dark brown-accented interior, including dark brown stitching on dash, door and seat stitching, and dark brown cup holder trim and anti-slip in-dash storage trays with blue ambient lighting										S	S		
Red-accented interior, including red stitching on dash and seat, and black in-dash storage trays													S
Red-accented interior, including red stitching on dash, doors, console, and seat, and black anti-slip in-dash storage trays with blue ambient lighting													S
Ash Gray fabric-trimmed headliner	S	S	S	S	S	S	S	S		S	S		
Black fabric-trimmed headliner									S			S	S
Silver interior door handles			S	S	S	S	S	S	S	S	S		S
Black interior door handles	S	S										S	
Remote keyless entry system with lock, unlock, panic functions and remote illuminated entry	S	S											
Smart Key System ³⁴ on front doors and liftgate with Push Button Start, remote keyless entry system with lock, unlock, panic functions and remote illuminated entry			S	S			S						
Smart Key System ³⁴ on front doors and liftgate with Push Button Start, remote keyless entry system with lock, unlock, and panic functions, power liftgate ³⁵ and remote illuminated entry			P	P	S	S	P	S	S	S	S	S	S
Power windows with auto up/down and jam protection in all positions	S	S	S	S	S	S	S	S	S	S	S	S	S
Rear liftgate window defogger	S	S	S	S	S	S	S	S	S	S	S	S	S
Power door locks with shift-linked automatic lock/unlock feature	S	S	S	S	S	S	S	S	S	S	S	S	S
Day/night rearview mirror	S	S	S	S	S	S	S	S				S	
Auto-dimming rearview mirror with HomeLink ³⁹ universal transceiver													S
Digital rearview mirror with HomeLink ³⁹ universal transceiver					P	P		P	S	S	S		P
Overhead console with maplights, sunglasses storage and Safety Connect ⁸⁸ button	S	S	S	S			S					S	
Overhead console with maplights, sunglasses storage, Safety Connect ⁸⁸ button and power tilt/slide moonroof controls			P	P	S	S	P	S	S	S	S	P	S
Sun visors with illuminated vanity mirrors	S	S											
Sun visors with sliding extensions and illuminated vanity mirrors			S	S	S	S	S	S	S	S	S	S	S
Center console with covered storage compartment, two cup holders, drive mode, Electronic Parking Brake (EPB) ³¹ and automatic Brake Hold ³² controls, and front storage tray	S	S	S	S	S	S			S	S	S	S	S
Center console with covered storage compartment, two cup holders, drive mode, Multi-Terrain Select (MTS), Electric Parking Brake (EPB) ³¹ and automatic Brake Hold ³² controls, and front storage tray	S (AWD)		S (AWD)		S (AWD)		S	S		S (AWD)			
Passenger-side glove compartment	S	S	S	S	S	S	S	S	S	S	S	S	S

RAV4 FEATURES⁴⁹

S = Standard O = Optional P = Available as part of a package

Interior (continued)	LE	LE Hybrid	XLE	XLE Hybrid	XLE Premium	XLE Premium Hybrid	Adventure	TRD Off-Road	XSE Hybrid	Limited	Limited Hybrid	RAV4 Prime SE	RAV4 Prime XSE
Height-adjustable rear cargo area deck board	S	S	S	S	S	S	S	S	S	S	S	S	S
Cargo area tonneau cover	P	P	S	S	S	S	S	S	S	S	S	S	S
Cargo area deckside-mounted storage net ⁴⁸							S	S	S	S	S		
TRD cargo area liner							S						
One USB media port ²⁹ in front storage tray	S	S											
Five USB ports ²⁹ — USB media port in front storage tray and four additional charge ports (two in front center console and two rear seat ports on the back of center console)			S	S	S	S	S	S	S	S	S	S	S
One 12V/120W auxiliary power outlet ⁴² in front instrument panel storage tray and one 12V/120W auxiliary power outlet ⁴² in second row	S	S											
One 12V/120W auxiliary power outlet ⁴² in front instrument panel storage tray and one 12V/120W auxiliary power outlet ⁴² in cargo area			S	S	S	S	S	S	S	S	S	S	S
One 120V/100W AC power outlet ⁴⁷ in cargo area							S	S					
Blue ambient illumination for in-dash shelves, center console cup holders and in front footwells									S	S	S		S
Front-seat reading lights, dome light and cargo area light	S	S	S	S	S	S	S	S	S	S	S	S	S
Front-door storage pockets with bottle holders	S	S	S	S	S	S	S	S	S	S	S	S	S
2 front and 2 rear cup holders; 2 front and 2 rear bottle holders	S	S	S	S	S	S	S	S	S	S	S	S	S
Electric Parking Brake (EPB) ⁵¹ with Brake Hold ⁵²	S	S	S	S	S	S	S	S	S	S	S	S	S

Audio Multimedia

Audio — 7.0-in. touchscreen, six speakers, Android Auto^{TM17} & Apple CarPlay^{®14} & Amazon Alexa²⁰ compatible, USB media port,²⁹ hands-free phone capability and music streaming via Bluetooth^{®50} wireless technology, SiriusXM^{®18} with 3-month All Access trial subscription.¹⁹ See toyota.com/audio-multimedia for details. Connected Services⁷ — Safety Connect^{®8} with 1-year trial,⁵³ Wi-Fi Connect¹² with up to 2 GB within 3-month trial.⁵⁴ See toyota.com/connected-services for details. S O

Audio — 7.0-in. touchscreen, six speakers, Android Auto^{TM17} & Apple CarPlay^{®14} & Amazon Alexa²⁰ compatible, USB media port,²⁹ four USB charge ports,²⁹ hands-free phone capability and music streaming⁵⁰ via Bluetooth^{®50} wireless technology, SiriusXM^{®18} with 3-month All Access trial subscription.¹⁹ See toyota.com/audio-multimedia for details. Connected Services⁷ — Safety Connect^{®8} with 1-year trial,⁵³ Wi-Fi Connect¹² with up to 2 GB within 3-month trial.⁵⁴ See toyota.com/connected-services for details. S O

Audio — 8.0-in. touchscreen, six speakers, Android Auto^{TM17} & Apple CarPlay^{®14} & Amazon Alexa²⁰ compatible, USB media port,²⁹ four USB charge ports,²⁹ hands-free phone capability and music streaming⁵⁰ via Bluetooth^{®50} wireless technology, SiriusXM^{®18} with 3-month All Access trial subscription.¹⁹ See toyota.com/audio-multimedia for details. Connected Services⁷ — Safety Connect^{®8} with 1-year trial,⁵³ Wi-Fi Connect¹² with up to 2 GB within 3-month trial.⁵⁴ See toyota.com/connected-services for details. S

Audio Plus — 8.0-in. touchscreen, six speakers, USB media port,²⁹ four USB charge ports,²⁹ hands-free phone capability and music streaming⁵⁰ via Bluetooth^{®50} wireless technology, Android Auto^{TM17} & Apple CarPlay^{®14} & Amazon Alexa²⁰ compatible, SiriusXM^{®18} with 3-month All Access trial subscription.¹⁹ See toyota.com/audio-multimedia for details. Connected Services⁷ — Safety Connect^{®8} with 1-year trial,⁵³ Service Connect¹⁰ with 10-year trial,³⁶ Remote Connect¹¹ with 1-year trial,³⁷ Wi-Fi Connect¹² with up to 2 GB within 3-month trial.⁵⁴ See toyota.com/connected-services for details. P P S S S

Audio Plus — 9.0-in. touchscreen, six speakers, USB media port,²⁹ four USB charge ports,²⁹ hands-free phone capability and music streaming⁵⁰ via Bluetooth^{®50} wireless technology, Android Auto^{TM17} & Apple CarPlay^{®14} & Amazon Alexa²⁰ compatible, SiriusXM^{®18} with 3-month All Access trial subscription.¹⁹ See toyota.com/audio-multimedia for details. Connected Services⁷ — Safety Connect^{®8} with 1-year trial,⁵³ Service Connect¹⁰ with 10-year trial,³⁶ Remote Connect¹¹ with 1-year trial,³⁷ Wi-Fi Connect¹² with up to 2 GB within 3-month trial.⁵⁴ See toyota.com/connected-services for details. S

RAV4 FEATURES⁴⁹

S = Standard O = Optional P = Available as part of a package

Audio Multimedia (continued)

	LE	LE Hybrid	XLE	XLE Hybrid	XLE Premium	XLE Premium Hybrid	Adventure	TRD Off-Road	XSE Hybrid	Limited	Limited Hybrid	RAV4 Prime SE	RAV4 Prime XSE
Premium Audio, Dynamic Navigation ⁴⁵ with 3-year trial ⁴⁶ — 8.0-in. touchscreen, 11 JBL [®] speakers including subwoofer and amplifier, USB media port; ²⁹ four USB charge ports; ²⁹ hands-free phone capability and music streaming ⁵⁰ via Bluetooth [®] wireless technology, Android Auto [™] ¹⁷ & Apple CarPlay [®] ¹⁴ & Amazon Alexa ²⁰ compatible, SiriusXM [®] ¹⁸ with 3-month All Access trial subscription. ¹⁹ See toyota.com/audio-multimedia for details. Connected Services ⁷ — Safety Connect [®] ⁸ with 1-year trial; ⁵³ Service Connect ¹⁰ with 10-year trial; ³⁶ Remote Connect ¹¹ with 1-year trial; ³⁷ Wi-Fi Connect ¹² with up to 2 GB within 3-month trial; ⁵⁴ Destination Assist ¹³ with 1-year trial. ⁵⁵ See toyota.com/connected-services for details.								P	P	S	S		

Safety/Convenience

Toyota Safety Sense [™] 2.0 (TSS 2.0) ²² — Pre-Collision System with Pedestrian Detection (PCS w/PD); ²³ Lane Departure Alert with Steering Assist (LDA w/SA); ²⁵ Lane Tracing Assist (LTA); ²⁷ Automatic High Beams; ²⁶ Full-Speed Range Dynamic Radar Cruise Control (DRCC) ²⁴ and Road Sign Assist (RSA) ²⁸	S	S	S	S	S	S	S	S	S	S	S	S	S
STAR SAFETY SYSTEM ™ Star Safety System [™] — includes Enhanced Vehicle Stability Control (VSC) ⁵⁶ Traction Control (TRAC), Anti-lock Brake System (ABS), Electronic Brake-force Distribution (EBD), Brake Assist (BA) ⁵⁷ and Smart Stop Technology [®] (SST) ⁵⁸	S	S	S	S	S	S	S	S	S	S	S	S	S
Eight airbags ³⁰ — includes driver and front passenger Advanced Airbag System, driver and front passenger seat-mounted side airbags, driver's knee airbag, front passenger seat cushion airbag, and front and rear side curtain airbags	S	S	S	S	S	S	S	S	S	S	S	S	S
3-point seatbelts for all seating positions; driver-side Emergency Locking Retractor (ELR) and Automatic/Emergency Locking Retractor (ALR/ELR) on all passenger seatbelts	S	S	S	S	S	S	S	S	S	S	S	S	S
Adjustable front shoulder anchors	S	S	S	S	S	S	S	S	S	S	S	S	S
Front and outboard second-row seatbelts with seatbelt pretensioners with force limiters	S	S	S	S	S	S	S	S	S	S	S	S	S
Backup camera ⁵⁹ with projected path	S	S	S	S	S	S						S	
Backup camera ⁵⁹ with dynamic gridlines			P	P	P	P	S	S	S	S	S		S
LATCH (Lower Anchors and Tethers for Children) includes lower anchors on outboard rear seats and tether anchors on all rear seats	S	S	S	S	S	S	S	S	S	S	S	S	S
Child-protector rear door locks and power window lockout control	S	S	S	S	S	S	S	S	S	S	S	S	S
Front and rear side-impact door beams	S	S	S	S	S	S	S	S	S	S	S	S	S
Tire Pressure Monitor System (TPMS) ⁶⁰	S	S	S	S	S	S	S	S	S	S	S	S	S
Safety Connect [®] ⁸ — includes Emergency Assistance, Stolen Vehicle Locator, ⁶¹ Roadside Assistance ⁹ and Automatic Collision Notification. A one-year trial subscription is included at no additional cost. ⁵³	S	S	S	S	S	S	S	S	S	S	S	S	S
Blind Spot Monitor (BSM) ³¹ with Rear Cross-Traffic Alert (RCTA) ³²	P	P	S	S	S	S	S	S	S	S	S	S	S
Front and Rear Parking Assist with Automatic Braking (PA w/AB) ³⁸					P	P		P	P	S	S		P
Vehicle Proximity Notification System (VPNS) ⁶²		S		S		S			S		S	S	S
Trailer-Sway Control (TSC) ⁶³	S	S	S	S	S	S	S	S	S	S	S	S	S
Hill Start Assist Control (HAC) ⁶⁴	S	S	S	S	S	S	S	S	S	S	S	S	S
Downhill Assist Control (DAC) ⁶⁵							S	S		S (AWD)			
Anti-theft system with alarm and engine immobilizer ⁶⁶			P	P	P	P	S	S	S	S	S		S
Anti-theft system with engine immobilizer ⁶⁶	S	S	S	S	S	S						S	

Packages and Options

Rear cargo area cover	O	O	S	S	S	S	S	S	S	S	S	S	S
Blind Spot Monitor (BSM) ³¹ with Rear Cross-Traffic Alert (RCTA) ³² — includes color-keyed heated power outside mirrors with turn signal and blind spot warning ³¹ indicators	O	O	S	S	S	S	S	S	S	S	S	S	S
Panoramic glass roof with front power tilt/slide moonroof									O	O	O		O

RAV4 FEATURES⁴⁹

S = Standard O = Optional P = Available as part of a package

Packages and Options (continued)	LE	LE Hybrid	XLE	XLE Hybrid	XLE Premium	XLE Premium Hybrid	Adventure	TRD Off-Road	XSE Hybrid	Limited	Limited Hybrid	RAV4 Prime SE	RAV4 Prime XSE
Adaptive Front Headlight System LED projector headlights with chrome bezels, automatic level and pan controls, Automatic High Beams ²⁶ and auto on/off											O		O
Two-tone exterior color							O	O	S				S
Premium paint ¹	O	O	O	O	O	O	O	O	O	O	O	O	O
XLE Grade Weather Package Includes heated leather-trimmed steering wheel, heated front seats and rain-sensing variable intermittent windshield wipers with de-icer function			P	P									
XLE Premium Grade Weather Package Includes heated leather-trimmed steering wheel, heated front seats, 8-way power-adjustable driver's seat with two-position memory function and lumbar support, and rain-sensing variable intermittent windshield wipers with de-icer function					P	P							
Adventure Grade Weather Package Includes heated steering wheel, perforated heated and ventilated front seats, and rain-sensing variable intermittent windshield wipers with de-icer function							P						
TRD Off-Road Grade Weather Package Includes heated steering wheel, perforated heated and ventilated front seats, and rain-sensing variable intermittent windshield wipers with de-icer function								P					
XSE Grade Weather Package Includes heated steering wheel and rain-sensing variable intermittent windshield wipers with de-icer function									P				
Limited Grade Weather Package Includes heated steering wheel, perforated heated and ventilated front seats, rear outboard passenger heated seating with perforated inserts, and rain-sensing variable intermittent windshield wipers with de-icer function										P	P		
XLE Grade Convenience Package Includes height-adjustable power liftgate ³⁵ with jam protection and power tilt/slide moonroof with one-touch open/close			P	P									
Adventure Grade Convenience Package Includes height-adjustable power liftgate ³⁵ with jam protection and power tilt/slide moonroof with one-touch open/close							P						
Audio Plus — 8.0-in. touchscreen, six speakers, USB media port, ²⁹ four USB charge ports, ²⁹ hands-free phone capability and music streaming ⁵⁰ via Bluetooth ^{®50} wireless technology, Android Auto ^{™17} & Apple CarPlay ^{®14} & Amazon Alexa ²⁰ compatible, SiriusXM ^{®18} with 3-month All Access trial subscription. ¹⁹ See toyota.com/audio-multimedia for details. Connected Services ⁷ — Safety Connect ^{®8} with 1-year trial, ⁵³ Service Connect ¹⁰ with 10-year trial, ³⁶ Remote Connect ¹¹ with 1-year trial, ³⁷ Wi-Fi Connect ¹² with up to 2 GB within 3-month trial. ⁵⁴ See toyota.com/connected-services for details.			P	P			S	S	S				
Audio Plus — 8.0-in. touchscreen, 11 JBL ^{®21} speakers including subwoofer and amplifier, USB media port, ²⁹ four USB charge ports, ²⁹ hands-free phone capability and music streaming ⁵⁰ via Bluetooth ^{®50} wireless technology, Android Auto ^{™17} & Apple CarPlay ^{®14} & Amazon Alexa ²⁰ compatible, SiriusXM ^{®18} with 3-month All Access trial subscription. ¹⁹ See toyota.com/audio-multimedia for details. Connected Services ⁷ — Safety Connect ^{®8} with 1-year trial, ⁵³ Service Connect ¹⁰ with 10-year trial, ³⁶ Remote Connect ¹¹ with 1-year trial, ³⁷ Wi-Fi Connect ¹² with up to 2 GB within 3-month trial. ⁵⁴ See toyota.com/connected-services for details.					P	P							
Premium Audio, Dynamic Navigation ⁴⁵ with 3-year trial ⁴⁶ — 8.0-in. touchscreen, 11 JBL ^{®21} speakers including subwoofer and amplifier, USB media port, ²⁹ four USB charge ports, ²⁹ hands-free phone capability and music streaming ⁵⁰ via Bluetooth ^{®50} wireless technology, Android Auto ^{™17} & Apple CarPlay ^{®14} & Amazon Alexa ²⁰ compatible, SiriusXM ^{®18} with 3-month All Access trial subscription. ¹⁹ See toyota.com/audio-multimedia for details. Connected Services ⁷ — Safety Connect ^{®8} with 1-year trial, ⁵³ Service Connect ¹⁰ with 10-year trial, ³⁶ Remote Connect ¹¹ with 1-year trial, ³⁷ Wi-Fi Connect ¹² with up to 2 GB within 3-month trial, ⁵⁴ Destination Assist ¹³ with 1-year trial. ⁵⁵ See toyota.com/connected-services for details.								P	P	S	S		

RAV4 FEATURES⁴⁹

S = Standard O = Optional P = Available as part of a package

Packages and Options (continued)	LE	LE Hybrid	XLE	XLE Hybrid	XLE Premium	XLE Premium Hybrid	Adventure	TRD Off-Road	XSE Hybrid	Limited	Limited Hybrid	RAV4 Prime SE	RAV4 Prime XSE
Premium Audio, Dynamic Navigation ⁴⁵ with 3-year trial ⁴⁶ (requires Weather Package) — 9.0-in touchscreen, 11 JBL ^{®21} speakers including subwoofer and amplifier, USB media port, ²⁹ four USB charge ports, ²⁹ hands-free phone capability and music streaming ⁵⁰ via Bluetooth ^{®50} wireless technology, Android Auto ^{TM17} & Apple CarPlay ^{®14} & Amazon Alexa ²⁰ compatible, SiriusXM ^{®18} with 3-month All Access trial subscription, ¹⁹ See toyota.com/audio-multimedia for details. Connected Services ⁷ — Safety Connect ^{®8} with 1-year trial, ⁵³ Service Connect ¹⁰ with 10-year trial, ³⁶ Remote Connect ¹¹ with 1-year trial, ³⁷ Wi-Fi Connect ¹² with up to 2 GB within 3-month trial, ⁵⁴ Destination Assist ¹³ with 1-year trial. ⁵⁵ See toyota.com/connected-services for details.													P
XLE Premium Grade Technology Package Includes Front and Rear Parking Assist with Automatic Braking (PA w/AB), ³⁸ digital display rearview mirror with HomeLink ^{®39} universal transceiver, and Qi-compatible wireless smartphone charging ⁴⁰ with charge indicator light					P	P							
TRD Off-Road Grade Technology Package Includes Front and Rear Parking Assist with Automatic Braking (PA w/AB), ³⁸ Bird's Eye View Camera ⁴⁴ with Perimeter Scan, Overhead 360-degree view in low-speed drive and reverse, and curb view; digital display rearview mirror with HomeLink ^{®39} universal transceiver, and Qi-compatible wireless smartphone charging ⁴⁰ with charge indicator light								P					
XSE Grade Technology Package Includes Front and Rear Parking Assist with Automatic Braking (PA w/AB), ³⁸ and Qi-compatible wireless smartphone charging ⁴⁰ with charge indicator light										P			
Limited Grade Advanced Technology Package Includes Smart Key System ³⁴ on all doors and liftgate; ³⁵ height-adjustable foot-activated power liftgate ³⁵ with jam protection; Bird's Eye View Camera ⁴⁴ with Perimeter Scan, Overhead 360-degree view in low-speed drive and reverse, and curb view; and Qi-compatible wireless smartphone charging ⁴⁰ with charge indicator light											P	P	
Prime SE Weather and Moonroof Package Includes heated leather-trimmed steering wheel, rear outboard passenger heated seating, rain-sensing variable intermittent windshield wipers with de-icer function, and power tilt/slide moonroof with one-touch open/close.													P
Prime XSE Weather Package Includes heated leather-trimmed steering wheel and rain-sensing variable intermittent windshield wipers with de-icer function.													P
Prime XSE Premium Package includes 10-in. color Head-Up Display (HUD) with speedometer, navigation and Hybrid System Indicator; 6.6 kW onboard charger; panoramic glass roof with front power tilt/slide moonroof; Bird's Eye View Camera ⁴⁴ with Perimeter Scan, Overhead 360 degree view in low-speed drive and reverse, and curb view; unique SofTex [®] -trimmed ³ seats with sporty red accents and stitching; heated and ventilated front seats; heated rear outboard seats; 8-way power-adjustable driver's seat with two-position memory function; 4-way power adjustable front passenger seat with seatback pocket; digital rearview mirror with HomeLink ^{®39} universal transceiver; Smart Key System ³⁴ on all doors; one 120V/1500W AC power outlet ⁴⁷ in cargo area; Adaptive Front Headlight System with LED projector headlights with chrome bezels, automatic level and pan controls, Automatic High Beams, ²⁶ and auto on/off feature; height-adjustable, foot-activated power liftgate ³⁵ with jam protection; Front and Rear Parking Assist with Automatic Braking (PA w/AB) ³⁸													P

RAV4 SPECIFICATIONS

S = Standard O = Optional P = Available as part of a package

Mechanical/Performance

	LE	LE Hybrid	XLE	XLE Hybrid	XLE Premium	XLE Premium Hybrid	Adventure	TRD Off-Road	XSE Hybrid	Limited	Limited Hybrid	RAV4 Prime SE	RAV4 Prime XSE
ENGINE													
Plug-in Hybrid engine: 2.5-Liter Dynamic Force 4-Cylinder with SPORT, ECO, NORMAL modes, TRAIL mode, EV/HV mode and HV/EV Charge Hold; 302 combined net hp; internal combustion engine with 176 hp @ 5,300 rpm; electric motor power output (front/rear) 179/53 hp (134/40 kW); torque (front/rear) 199/89 lb.-ft.; battery 355.2V												S	S
Hybrid engine: 2.5-Liter Dynamic Force 4-Cylinder with SPORT, ECO, NORMAL, EV, ³³ TRAIL drive modes; 219 combined net hp; internal combustion engine with 176 hp @ 5,300 rpm; electric motor power output (front/rear) 118/54 hp (88/40 kW); torque (front/rear) 149/89 lb.-ft.; battery 259.0V		S		S		S			S		S		
2.5-Liter Dynamic Force 4-Cylinder DOHC D-4S Injection with Dual Variable Valve Timing with intelligence (VVT-i), with SPORT, ECO, NORMAL Modes, 203 hp @ 6,600 rpm; 184 lb.-ft. @ 5,000 rpm	S		S		S		S	S		S			
Stop and Start Engine System (S&S) ⁶⁷	S (AWD)		S		S								
Compression ratio: 14.0:1		S		S		S			S		S	S	S
Compression ratio: 13.0:1	S		S		S		S	S		S			
Induction system: (D-4S) Dual-Injection (Direct-Injection and Port-injection) EFI with Electronic Throttle Control System with intelligence (ETCS-i)	S	S	S	S	S	S	S	S	S	S	S	S	S
Emission rating: Super Ultra Low Emission Vehicle (SULEV)		S		S		S			S		S	S	S
Emission rating: Ultra Low Emission Vehicle (ULEV)	S		S		S		S	S		S			
HV ELECTRIC MOTOR													
Power output (front/rear): 118/54 hp (88/40 kW)		S		S		S			S		S		
Torque (front/rear): 149/89 lb.-ft. (202/121 N·m)		S		S		S			S		S		
Power output (front/rear) 179/53 hp (134/40 kW)												S	S
Torque (front/rear) 199/89 lb.-ft.												S	S
HV TRACTION BATTERY													
Type: Sealed Lithium-ion (Li-ion)						S			S		S	S	S
Type: Nickel-Metal Hydride (Ni-MH) 244.8V		S		S									
Voltage: 259.0V						S			S		S		
Voltage: 355.2V												S	S
TRANSMISSION													
Direct Shift 8-speed Electronically Controlled automatic Transmission with intelligence (ECT-i) and sequential shift mode	S		S		S		S	S		S			
Electronically controlled Continuously Variable Transmission (ECVT) with sequential shift mode		S		S		S			S		S	S	S
Engine oil cooler, automatic transmission fluid cooler and upgraded 150-amp alternator							S	S					
Engine oil cooler, automatic transmission fluid cooler and hybrid system cooler		S		S		S			S		S	S	S
DRIVETRAIN													
Front-Wheel Drive (FWD)	S		S		S					S			
All-Wheel Drive (AWD)	S (AWD)		S (AWD)		S (AWD)								
Dynamic Torque Vectoring All-Wheel Drive (TV-AWD) with Rear Driveline Disconnect							S	S		S (AWD)			
Electronic On-Demand All-Wheel Drive (AWD)		S		S		S			S		S	S	S
All-Wheel Drive Integrated Management (AIM) with Multi-Information Display (MID) monitor		S	S (AWD)	S	S (AWD)	S	S	S	S	S (AWD)	S	S	S
CAPABILITY													
Ground clearance (in.)	8.4	8.1	8.4	8.1	8.6	8.1	8.6	8.6	8.1	8.6	8.1	8.1	8.2
Approach/departure angle (degrees)	19.0/21.0	19.0/21.0	19.0/21.0	19.0/21.0	19.0/21.0	19.0/21.0	19.0/21.0	19.0/21.0	19.0/21.0	19.0/21.0	19.0/21.0	19.0/21.0	19.5/21.5
Hill Start Assist Control (HAC) ⁶⁴	S	S	S	S	S	S	S	S	S	S	S	S	S
DRIVE MODES													
SPORT, ECO and NORMAL drive modes	S		S		S		S	S		S			
Multi-Terrain Select (MTS) dial with MUD & SAND, ROCK & DIRT, SNOW, and NORMAL drive modes	S (AWD)		S (AWD)		S (AWD)								
Multi-Terrain Select (MTS) dial with MUD & SAND, ROCK & DIRT, SNOW, and NORMAL drive modes, and Downhill Assist Control (DAC) ⁶⁵							S	S		S (AWD)			

RAV4 SPECIFICATIONS

S = Standard O = Optional P = Available as part of a package

Mechanical/Performance (continued)

	LE	LE Hybrid	XLE	XLE Hybrid	XLE Premium	XLE Premium Hybrid	Adventure	TRD Off-Road	XSE Hybrid	Limited	Limited Hybrid	RAV4 Prime SE	RAV4 Prime XSE
Drive mode dial with SPORT, ECO, and NORMAL modes, EV Mode ³³ and TRAIL mode		S		S		S			S		S		

Drive mode dial with SPORT, ECO and NORMAL modes, TRAIL mode, Auto EV/HV mode, and HV/EV Charge Hold												S	S
--	--	--	--	--	--	--	--	--	--	--	--	---	---

BODY CONSTRUCTION

Reinforced unitized steel body	S	S	S	S	S	S	S	S	S	S	S	S	S
--------------------------------	---	---	---	---	---	---	---	---	---	---	---	---	---

SUSPENSION

Independent MacPherson strut front suspension with stabilizer bar; multi-link rear suspension with stabilizer bar	S	S	S	S	S	S	S			S	S	S	S
---	---	---	---	---	---	---	---	--	--	---	---	---	---

TRD-tuned independent MacPherson strut front suspension with stabilizer bar; multi-link rear suspension with stabilizer bar; unique shocks, struts, red-painted shock absorber, jounce bumpers								S					
--	--	--	--	--	--	--	--	---	--	--	--	--	--

Sport-tuned independent MacPherson strut front suspension with stabilizer bar; sport-tuned multi-link rear suspension with stabilizer bar									S				
---	--	--	--	--	--	--	--	--	---	--	--	--	--

STEERING

Electric Power Steering (EPS); power-assisted rack-and-pinion	S	S	S	S	S	S	S	S	S	S	S	S	S
---	---	---	---	---	---	---	---	---	---	---	---	---	---

Steering ratio	14.3:1	14.3:1	14.3:1	14.3:1	14.4:1	14.3:1	14.4:1	14.4:1	14.3:1	14.4:1	14.3:1	14.3:1	14.4:1
----------------	--------	--------	--------	--------	--------	--------	--------	--------	--------	--------	--------	--------	--------

Steering wheel turns (lock-to-lock)	2.76	2.76	2.76	2.76	2.65	2.76	2.65	2.65	2.76	2.65	2.76	2.76	2.65
-------------------------------------	------	------	------	------	------	------	------	------	------	------	------	------	------

Turning circle diameter, curb-to-curb (ft.)	36.1	36.1	36.1	36.1	37.4	36.1	37.4	37.4	36.1	37.4	36.1	36.1	37.4
---	------	------	------	------	------	------	------	------	------	------	------	------	------

BRAKES

Active Cornering Assist (ACA)	S	S	S	S	S	S	S	S	S	S	S	S	S
-------------------------------	---	---	---	---	---	---	---	---	---	---	---	---	---

Power-assisted ventilated 12.0-in. front disc brakes; ventilated 11.1-in. rear disc brakes	S	S	S	S	S	S	S	S	S	S	S		
--	---	---	---	---	---	---	---	---	---	---	---	--	--

Power-assisted ventilated 12.9-in. front disc brakes; ventilated 12.4-in. rear disc brakes												S	S
--	--	--	--	--	--	--	--	--	--	--	--	---	---

Electronically Controlled Braking (ECB) system with integrated regenerative braking		S		S		S			S		S	S	S
---	--	---	--	---	--	---	--	--	---	--	---	---	---

RATIOS

1st gear	5.250		5.250		5.250		5.250	5.250		5.250			
----------	-------	--	-------	--	-------	--	-------	-------	--	-------	--	--	--

2nd gear	3.028		3.028		3.028		3.028	3.028		3.028			
----------	-------	--	-------	--	-------	--	-------	-------	--	-------	--	--	--

3rd gear	1.95		1.95		1.95		1.95	1.95		1.95			
----------	------	--	------	--	------	--	------	------	--	------	--	--	--

4th gear	1.456		1.456		1.456		1.456	1.456		1.456			
----------	-------	--	-------	--	-------	--	-------	-------	--	-------	--	--	--

5th gear	1.220		1.220		1.220		1.220	1.220		1.220			
----------	-------	--	-------	--	-------	--	-------	-------	--	-------	--	--	--

6th gear	1.000		1.000		1.000		1.000	1.000		1.000			
----------	-------	--	-------	--	-------	--	-------	-------	--	-------	--	--	--

7th gear	0.808		0.808		0.808		0.808	0.808		0.808			
----------	-------	--	-------	--	-------	--	-------	-------	--	-------	--	--	--

8th gear	0.673		0.673		0.673		0.673	0.673		0.673			
----------	-------	--	-------	--	-------	--	-------	-------	--	-------	--	--	--

Mechanical/Performance (continued)

Reverse	4.014		4.014		4.014		4.014	4.014		4.014			
---------	-------	--	-------	--	-------	--	-------	-------	--	-------	--	--	--

Axle ratio	3.177	3.605	3.177	3.605	3.177	3.605	3.177	3.177	3.605	3.177	3.605	3.605	3.605
------------	-------	-------	-------	-------	-------	-------	-------	-------	-------	-------	-------	-------	-------

Final drive gear ratio	2.235	10.781	2.235	10.781	2.235	10.781	2.235	2.235	10.781	2.235	10.781	10.781	10.781
------------------------	-------	--------	-------	--------	-------	--------	-------	-------	--------	-------	--------	--------	--------

TOW PREP EQUIPMENT

Automatic transmission fluid cooler	S		S		S					S			
-------------------------------------	---	--	---	--	---	--	--	--	--	---	--	--	--

Tow hitch receiver and wiring harness	O	O	O	O	O	O	O	O	O	O	O	O	O
---------------------------------------	---	---	---	---	---	---	---	---	---	---	---	---	---

Dimensions

EXTERIOR DIMENSIONS (in.)

Overall height with/without antenna	67.0	67.0	67.0	67.0	67.2	67.0	68.6	68.6	67.0	67.2	67.0	67.0	67.2
-------------------------------------	------	------	------	------	------	------	------	------	------	------	------	------	------

Overall length/width	180.9/73.0	180.9/73.0	180.9/73.0	180.9/73.0	180.9/73.0	180.9/73.0	181.5/73.4	181.5/73.4	180.9/73.0	180.9/73.0	180.9/73.0	180.9/73.0	180.9/73.0
----------------------	------------	------------	------------	------------	------------	------------	------------	------------	------------	------------	------------	------------	------------

Track (front/rear)	63.0/63.7	63.0/63.7	63.0/63.7	63.0/63.7	62.6/63.3	62.6/63.3	62.6/63.3	62.6/63.3	63.0/63.7	62.6/63.3	63.0/63.7	63.0/63.7	63.0/63.7
--------------------	-----------	-----------	-----------	-----------	-----------	-----------	-----------	-----------	-----------	-----------	-----------	-----------	-----------

Wheelbase	105.9	105.9	105.9	105.9	105.9	105.9	105.9	105.9	105.9	105.9	105.9	105.9	105.9
-----------	-------	-------	-------	-------	-------	-------	-------	-------	-------	-------	-------	-------	-------

INTERIOR DIMENSIONS, FRONT/SECOND-ROW SEATS (in.)

Head room (front/rear) with moonroof	37.7/39.5	37.7/39.5	37.7/39.5	37.7/39.5	37.7/39.5	37.7/39.5	37.7/39.5	37.7/39.5	37.7/39.5	37.7/39.5	37.7/39.5	37.7/39.5	37.7/39.5
--------------------------------------	-----------	-----------	-----------	-----------	-----------	-----------	-----------	-----------	-----------	-----------	-----------	-----------	-----------

Hip room (front/rear)	54.3/47.7	54.3/47.7	54.3/47.7	54.3/47.7	54.3/47.7	54.3/47.7	54.3/47.7	54.3/47.7	54.3/47.7	54.3/47.7	54.3/47.7	54.3/47.7	54.3/47.7
-----------------------	-----------	-----------	-----------	-----------	-----------	-----------	-----------	-----------	-----------	-----------	-----------	-----------	-----------

Leg room (front/rear)	41.0/37.8	41.0/37.8	41.0/37.8	41.0/37.8	41.0/37.8	41.0/37.8	41.0/37.8	41.0/37.8	41.0/37.8	41.0/37.8	41.0/37.8	41.0/37.8	41.0/37.8
-----------------------	-----------	-----------	-----------	-----------	-----------	-----------	-----------	-----------	-----------	-----------	-----------	-----------	-----------

Shoulder room (front/rear)	57.8/56.4	57.8/56.4	57.8/56.4	57.8/56.4	57.8/56.4	57.8/56.4	57.8/56.4	57.8/56.4	57.8/56.4	57.8/56.4	57.8/56.4	57.8/56.4	57.8/56.4
----------------------------	-----------	-----------	-----------	-----------	-----------	-----------	-----------	-----------	-----------	-----------	-----------	-----------	-----------

Cargo length behind rear seat ⁴⁸	40.0	40.0	40.0	40.0	40.0	40.0	40.0	40.0	40.0	40.0	40.0	40.0	40.0
---	------	------	------	------	------	------	------	------	------	------	------	------	------

Cargo minimum/maximum width ⁴⁸	39.4/59.0	39.4/59.0	39.4/59.0	39.4/59.0	39.4/59.0	39.4/59.0	39.4/59.0	39.4/59.0	39.4/59.0	39.4/59.0	39.4/59.0	39.4/59.0	39.4/59.0
---	-----------	-----------	-----------	-----------	-----------	-----------	-----------	-----------	-----------	-----------	-----------	-----------	-----------

Cargo minimum/maximum height ⁴⁹	34.5/36.6	34.5/36.6	34.5/36.6	34.5/36.6	34.5/36.6	34.5/36.6	34.5/36.6	34.5/36.6	34.5/36.6	34.5/36.6	34.5/36.6	33.2	33.2
--	-----------	-----------	-----------	-----------	-----------	-----------	-----------	-----------	-----------	-----------	-----------	------	------

See numbered footnotes in Disclosures section.

RAV4 SPECIFICATIONS

S = Standard O = Optional P = Available as part of a package

Dimensions (continued)

	LE	LE Hybrid	XLE	XLE Hybrid	XLE Premium	XLE Premium Hybrid	Adventure	TRD Off-Road	XSE Hybrid	Limited	Limited Hybrid	RAV4 Prime SE	RAV4 Prime XSE
INTERIOR DIMENSIONS (cu. ft.)													
EPA interior volume (estimated)	136.4	136.4	136.4	136.4	136.4	136.4	136.4	136.4	136.4	136.4	136.4	136.4	136.4
EPA passenger volume (estimated)	98.9	98.9	98.9	98.9	98.9	98.9	98.9	98.9	98.9	98.9	98.9	98.9	98.9
Cargo volume behind front/rear seat ⁴⁸	69.8/37.6	69.8/37.6	69.8/37.5	69.8/37.5	69.8/37.5	69.8/37.5	69.8/37.6	69.8/37.6	69.8/37.5	69.8/37.5	69.8/37.5	69.8/33.5	69.8/33.5

Weights/Capacities

WEIGHT/CAPACITY

Curb weight (lb.)	3370	3690	3405	3755	3405	3755	3655	3655	3755	3485	3780	4235	4300
Fuel tank (gal.)	14.5	14.5	14.5	14.5	14.5	14.5	14.5	14.5	14.5	14.5	14.5	14.5	14.5
Gross Vehicle Weight Rating (GVWR) (lb.)	4610	4920	4610	4920	4610	4920	4705	4705	4920	4610	4920	5530	5530
Payload (lb.) ⁶⁸	1240	1230	1205	1165	1205	1165	1050	1050	1165	1125	1140	1295	1230
Seating capacity	5	5	5	5	5	5	5	5	5	5	5	5	5

TOWING

Towing capacity (lb.) ⁴¹	1500	1750	1500	1750	1500	1750	3500	3500	1750	1500	1750	2500	2500
-------------------------------------	------	------	------	------	------	------	------	------	------	------	------	------	------

Tires

TYPE

All-season mud and snow-rated radials	S	S	S	S	S	S	S		S	S	S	S	S
Falken All-Terrain tires								S					
Spare - Temporary	S	S	S	S	S	S	S	S	S	S	S	S	S

MPG

MPG/MPGE

Mileage estimate: MPG ²⁻⁴	27/35/30 (FWD)		28/35/30 (FWD)		28/35/30 (FWD)			27/35/30 (FWD)					
(city/highway/combined)	27/34/30 (AWD)	41/38/40	27/33/29 (AWD)	41/38/40	27/33/29 (AWD)	41/38/40	25/33/28	25/32/28	41/38/40	25/33/28 (AWD)	41/38/40	40/36/38	40/36/38
MPGe ⁴												94	94
Electric driving range (miles) ⁵												42	42

DISCLOSURES

1. Extra-cost color. 2. EPA-estimated 27 city/35 hwy/30 combined mpg for 2021 RAV4 LE FWD and Limited FWD; 27 city/34 hwy/30 combined mpg for 2021 RAV4 LE AWD; 28 city/35 hwy/30 combined mpg for 2021 RAV4 XLE FWD and XLE Premium FWD; 27 city/33 hwy/29 combined mpg for 2021 RAV4 XLE AWD and XLE Premium AWD; 25 city/33 hwy/28 combined mpg for 2021 RAV4 Adventure and Limited AWD; 25 city/32 hwy/28 combined mpg for 2021 RAV4 TRD Off-Road; and 41 city/38 hwy/40 combined mpg for 2021 RAV4 LE Hybrid, XLE Hybrid, XLE Premium Hybrid, XSE Hybrid and Limited Hybrid. Use for comparison purposes only. Your mileage will vary for many reasons, including your vehicle's condition and how/where you drive. See www.fueleconomy.gov. 3. SofTex® is a registered trademark of Toyota Motor Sales, U.S.A., Inc. 4. EPA-estimated 94 combined MPGe for 2021 RAV4 Prime. MPGe is equivalent of gasoline fuel efficiency for electric operation. EPA-estimated 40 city/36 hwy/38 combined mpg. Use for comparison purposes only. Your MPGe/MPG will vary for many reasons, including your vehicle's condition and how/where you drive. See www.fueleconomy.gov. 5. EPA-estimated 42-mile all-electric driving range when fully charged for 2021 RAV4 Prime. Use for comparison purposes only. Your mileage will vary for many reasons, including your vehicle's condition and how/where you drive. See www.fueleconomy.gov. 6. Performance figures are for comparison only and were obtained with prototype vehicles by professional drivers using special safety equipment and procedures. Do not attempt. 7. Connected Services depends on an operative telematics device, a cellular connection, navigation map data, GPS signal strength and other factors outside of Toyota's control, all of which can limit system functionality or availability, including access to response center and emergency support. Service may vary by vehicle and region. Subscription required after trial. Terms of Use apply. Data charges may apply. Apps and services subject to change at any time without notice. See toyota.com/connected-services for details. To learn about Toyota's data collection, use, sharing and retention practices, please visit <https://www.toyota.com/privacyvts/>. Stolen vehicle police report required to use Stolen Vehicle Locator. 8. Safety Connect® depends on an operative telematics device, a cellular connection, GPS signal strength and other factors outside of Toyota's control, all of which can limit system functionality or availability, including access to response center and emergency support. Stolen vehicle police report required to use Stolen Vehicle Locator. Some features may require the Toyota app. Registration required. Subscription required after trial. Service subject to change at any time without notice. Terms of Use apply. Data charges may apply. Service may vary by vehicle and region. See usage precautions and service limitations in *Owner's Manual* and at toyota.com/connected-services/ for additional details. To learn about Toyota's data collection, use, sharing and retention practices, please visit <https://www.toyota.com/privacyvts/>. 9. Requires adequate cellular coverage and GPS signal strength. May not work in all areas. Service may vary by vehicle and region. See Toyota Dealer for details and exclusions. 10. Information provided is based on the last time data was collected from the vehicle and may not be up to date. Service Connect depends on an operative telematics device, a cellular connection, navigation map data, GPS signal strength and other factors outside of Toyota's control, which can limit functionality or availability. Service may vary by vehicle and region. Registration required. Service subject to change at any time without notice. Terms and conditions of subscription service agreement apply. See usage precautions and service limitations in *Owner's Manual* and at toyota.com/connected-services/ for additional details. To learn about Toyota's data collection, use, sharing and retention, please visit <https://www.toyota.com/privacyvts/>. 11. Use only if aware of circumstances surrounding vehicle and it is legal and safe to do so (e.g., do not remotely start engine if vehicle is in an enclosed space or vehicle is occupied by a child). Toyota's Remote Connect depends on an operative telematics device, a cellular connection, GPS signal strength and other factors outside of Toyota's control, which can limit system functionality and availability. Service may vary by vehicle and region. Registration and Toyota app download required. Subscription required after trial. Terms of Use apply. Data charges may apply. Remote start/stop not available on manual-transmission-equipped vehicles. Services subject to change at any time without notice. See usage precautions and service limitations in *Owner's Manual* and at <https://www.toyota.com/connected-services/> for additional details. To learn about Toyota's data collection, use, sharing and retention practices, please visit <https://www.toyota.com/privacyvts/>. 12. Eligible vehicle and wireless service required. Coverage and service not available everywhere. Valid in the contiguous U.S. and Alaska. Do not drive distracted. Go to att.com/toyota for terms and conditions. Data usage and charges apply. Up to 5 devices can be supported using in-vehicle connectivity. Apps and services subject to change at any time without notice. 13. Destination Assist depends on an operative telematics device, a cellular connection, navigation map data and GPS signal strength and other factors outside of Toyota's control, which can limit system ability functionality or availability. Use common sense when relying on this information. Service may vary by vehicle and region. Registration required. Services subject to change at any time without notice. Terms of Use apply. See *Owner's Manual* and toyota.com/connected-services/ for additional limitations and details. To learn about Toyota's data collection, use, sharing and retention practices, please visit <https://www.toyota.com/privacyvts/>. 14. Apps and services are subject to change at any time without notice. Data charges may apply. Apple CarPlay® functionality requires a compatible iPhone® connected with an approved data cable into the USB media port. Apple CarPlay® is a registered trademark of Apple Inc. 15. iPhone® is a registered trademark of Apple Inc. All rights reserved. 16. Android is a trademark of Google LLC. 17. Vehicle user interface is a product of Google and its terms and privacy statement apply. To use Android Auto on your audio display, you'll need an Android Auto compatible vehicle and Android phone. For phone compatibility visit: <https://www.android.com/auto/>. Requires compatible smartphone connected with an approved data cable into the USB media port, and data plan rates apply. Apps and services vary by phone carrier and are subject to change at any time without notice. Android, Android Auto and Waze are trademarks of Google. 18. SiriusXM® audio services require a subscription sold separately by Sirius XM Radio Inc. If you decide to continue service after your trial, the subscription plan you choose will automatically renew thereafter and you will be charged according to your chosen payment method at then-current rates. Fees and taxes apply. To cancel, you must call SiriusXM at 1-866-635-2349. See SiriusXM Customer Agreement for complete terms at www.siriusxm.com. All fees and programming subject to change. Not all vehicles or devices are capable of receiving all services offered by SiriusXM. Current information and features may not be available in all locations, or on all receivers. ©2021 Sirius XM Radio Inc. SiriusXM and all related marks and logos are trademarks of Sirius XM Radio Inc. 19. SiriusXM All Access trial length and service availability may vary by model, model year or trim. 20. Amazon, Alexa and all related logos are trademarks of Amazon.com, Inc. or its affiliates. Certain functions require adequate signal strength and smartphone technology/connectivity. Not all Amazon Alexa functionality is available for in-vehicle use. See applicable app for details. Download of the Toyota+Alexa app is required to begin in-vehicle use of Alexa. Data charges may apply for certain functions. Apps, prices and services subject to change at any time without notice. To learn more, go to <https://www.toyota.com/audio-multimedia>. To learn more about Toyota's data collection, use, sharing and retention practices, please visit <https://www.toyota.com/privacyvts/>. 21. JBL® is a registered trademark of Harman International Industries, Inc. 22. Toyota Safety Sense™ effectiveness is dependent on many factors including road, weather and vehicle conditions. Drivers are responsible for their own safe driving. Always pay attention to your surroundings and drive safely. See *Owner's Manual* for additional limitations and details. 23. The Pre-Collision System (PCS) with Pedestrian Detection (PD) is designed to determine if impact is imminent and help reduce impact speed and damage in certain frontal collisions involving a vehicle, a pedestrian or a bicyclist. PCS w/PD is not a substitute for safe and attentive driving. System effectiveness depends on many factors, such as speed, size and position of pedestrian or bicyclist and weather, light and road conditions. See *Owner's Manual* for additional limitations and details. 24. Full-Speed Range Dynamic Radar Cruise Control (DRCC) is designed to assist the driver and is not a substitute for safe and attentive driving practices. System effectiveness is dependent on many factors including road, weather and traffic conditions. Vehicles with manual transmission have regular DRCC. See *Owner's Manual* for additional limitations and details. 25. Lane Departure Alert with Steering Assist is designed to read visible lane markers under certain conditions. It provides a visual and audible alert and slight steering force when lane departure is detected. It is not a collision-avoidance system or a substitute for safe and attentive driving. Effectiveness is dependent on many factors including road, weather and vehicle conditions. See *Owner's Manual* for additional limitations and details. 26. Automatic High Beams operate at speeds above 25 mph. Factors such as a dirty windshield, weather, lighting and terrain limit effectiveness, requiring the driver to manually operate the high beams. See *Owner's Manual* for additional limitations and details. 27. Lane Tracing Assist (LTA) is designed to read visible lane markers and detect other vehicles under certain conditions. It is only operational when DRCC is engaged. See *Owner's Manual* for additional limitations and details. 28. Do not rely exclusively on Road Sign Assist (RSA). RSA is a driver support system that utilizes the vehicle's forward-facing camera and navigation system (when data is available) to recognize certain road signs and provide information to the driver via the multi-information display and/or Head-Up Display. Effectiveness is dependent on road, weather, vehicle and sign conditions. Use common sense when using RSA and do not drive distracted. See *Owner's Manual* for additional limitations and details. 29. May not be compatible with all mobile phones, MP3/WMA players and like models. 30. Airbag systems are Supplemental Restraint Systems and are designed to inflate only under certain conditions and in certain types of severe collisions. To decrease the risk of injury from an inflating airbag, always wear seatbelts and sit upright in the middle of the seat as far back as possible. Do not put objects in front of an airbag or around the seatback. Do not use a rearward-facing child seat in any front passenger seat. See *Owner's Manual* for additional limitations and details. 31. Do not rely exclusively on the Blind Spot Monitor. Always look over your shoulder and use your turn signal. There are limitations to the function, detection and range of the monitor. See *Owner's Manual* for additional limitations and details. 32. Do not rely exclusively on the Rear Cross-Traffic Alert system. Always look over your shoulder and use your mirrors to confirm rear clearance. There are limitations to the function, detection and range of the system. See *Owner's Manual* for additional limitations and details. 33. EV Mode lets you operate solely on battery power at low speeds for short distances and in limited circumstances, such as in a parking garage. Different conditions may prevent or limit usage. See your *Owner's Manual* for limitations and details. 34. The Smart Key System may interfere with some pacemakers or cardiac defibrillators. If you have one of these medical devices, please talk to your doctor to see if you should deactivate this system. 35. Installation of a tow hitch receiver or other accessories located near the rear bumper or side-door kick sensors may require disabling or removing the kick sensor, and the sensor operation setting in your vehicle should be turned off. Water, weather, dirt, and other conditions also may cause the sensor to not operate properly or to operate unintentionally. See *Owner's Manual* for limitations. 36. The Service Connect trial period is at no extra cost and begins on the original date of purchase or lease of a new vehicle. After the respective trial period expires, enrollment in paid subscription is required to access the service. 37. The Toyota Remote Connect trial period is at no extra cost and begins on the original date of purchase or lease of a new vehicle. Paid subscription required after trial to access the service. Terms of Use apply. 38. At speeds of 9 mph or less, Front and Rear Parking Assist with Automatic Braking (PA w/AB) is designed to assist drivers in avoiding potential collisions with nearby static objects when the vehicle is in Drive or Reverse and approaching crossing vehicles when the vehicle is in Reverse. Do not overly rely on PA w/AB. Always look around outside the vehicle and use mirrors to confirm clearance. Certain vehicle and environmental factors, including an object or vehicle's shape, size and composition, may affect the system's effectiveness. See *Owner's Manual* for additional limitations and details. 39. HomeLink® and the HomeLink® house icon are registered trademarks of Gentex Corporation. 40. Qi wireless charging may not be compatible with all mobile phones, MP3/WMA players and like models. When using the wireless charging system, avoid placing metal objects between the wireless charger and the mobile device when charging is active. Doing so may cause metal objects to become hot and could cause burns. 41. Before towing, confirm your vehicle and trailer are compatible, hooked up and loaded properly and that you have any necessary additional equipment. Do not exceed any Weight Ratings and follow all instructions in your *Owner's Manual*. The maximum you can tow depends on base curb weight plus the total weight of any cargo, occupants, and added vehicle equipment. "Added vehicle equipment" includes additional standard/optional equipment and accessories added by the manufacturer, dealers, and/or vehicle owners. The only way to be certain of your vehicle's exact curb weight is to weigh your vehicle without passengers or cargo. [Calculated with the new SAE J2807 method.] Installation of a tow hitch receiver or other accessories located near the rear bumper or side-door kick sensors may require disabling or removing the kick sensor, and the sensor operation setting in your vehicle should be turned off. See *Owner's Manual* for limitations. 42. Rated for 12 volts/10 amps. See *Owner's Manual* for additional limitations and details. 43. This floor mat/floor liner was designed

DISCLOSURES

specifically for use in your model and model year vehicle and SHOULD NOT be used in any other vehicle. To avoid potential interference with pedal operation, each mat/liner must be secured with its fasteners. Do not install a floor mat/floor liner on top of an existing floor mat/floor liner. **44.** The Bird's Eye View Camera does not provide a comprehensive view of the area surrounding the vehicle and you should also look around the vehicle, using mirrors to confirm surrounding clearance. Environmental conditions may limit effectiveness and view may become obscured. See *Owner's Manual* for additional limitations and details. **45.** Dynamic Navigation depends on an operative telematics device, a cellular connection, navigation map data and GPS signal strength, and other factors outside of Toyota's control, which can limit system functionality or availability. Services not available in every city or roadway. Use common sense when relying on information provided. Service may vary by vehicle and region. Registration is required. Terms of Use apply. See *Owner's Manual* and <https://toyota.com/connected-services> for additional limitations and details. To learn about Toyota's data collection, use, sharing and retention practices, please visit <https://www.toyota.com/privacyvts/>. **46.** The Dynamic Navigation three-year-trial period begins on the original date of purchase or lease of a new vehicle. After the trial period expires, enrollment in paid subscription is required to access the service. **47.** Do not exceed 120V. See *Owner's Manual* for additional limitations and details. **48.** Cargo and load capacity limited by weight and distribution. Always properly secure cargo and cargo area. **49.** Toyota strives to build vehicles to match customer interest and thus they typically are built with popular options and option packages. Not all options/packages are available separately and some may not be available in all regions of the country. See toyota.com for information about options/packages commonly available in your area. If you would prefer a vehicle without any or with different options, contact your dealer to check for current availability or the possibility of placing a special order. Color(s) depicted may vary based on multiple factors, including ambient lighting and the format in which it is being viewed (e.g., computer, mobile device or print). **50.** The Bluetooth® word mark and logos are registered trademarks owned by Bluetooth SIG, Inc., and any use of such marks by Toyota is under license. A compatible Bluetooth®-enabled phone must first be paired. Phone performance depends on software, coverage and carrier. **51.** When the system is on, Automatic Electric Parking Brake is designed to automatically engage the Electric Parking Brake under limited conditions. It may not hold the vehicle under all conditions and does not function when the vehicle is in Reverse. Automatic Electric Parking Brake is not a substitute for manual use of the Electric Parking Brake. See *Owner's Manual* for additional limitations and details. **52.** When the system is on, Brake Hold is designed to keep the brakes engaged after the driver brings the vehicle to a complete stop. It may not hold the vehicle under certain conditions and does not function when the vehicle is in Reverse. Brake Hold is not a substitute for safe and attentive driving. See *Owner's Manual* for additional limitations and details. **53.** The Safety Connect® trial period is at no extra cost and begins on the original date of purchase or lease of a new vehicle. Paid subscription required after trial to access the service. **54.** The Wi-Fi Connect trial begins at the time of activation and expires when 2GB of data is used or when the 3-month period ends. After the trial period expires, enrollment in a paid subscription is required to access the service. Terms and conditions apply. **55.** The Destination Assist trial period is at no extra cost and begins on the original date of purchase or lease of a new vehicle. After the trial period expires, enrollment in a paid subscription is required to access the service. **56.** Vehicle Stability Control is an electronic system designed to help the driver maintain vehicle control under adverse conditions. It is not a substitute for safe and attentive driving practices. Factors including speed, road conditions, weather and driver steering input can all affect whether VSC will be effective in preventing a loss of control. See *Owner's Manual* for additional limitations and details. **57.** Brake Assist is designed to help the driver take advantage of ABS and is not a substitute for safe driving practices. Braking effectiveness also depends on proper vehicle maintenance, tire and road conditions. See *Owner's Manual* for additional limitations and details. **58.** Smart Stop Technology® operates only in the event of certain contemporaneous brake and accelerator pedal applications. When engaged, the system will reduce power to help the brakes bring the vehicle to a stop. Factors including speed, road conditions and driver input can all impact stopping distance. Smart Stop Technology® is not a substitute for safe and attentive driving and does not guarantee instant stopping. See *Owner's Manual* for additional limitations and details. **59.** The backup camera does not provide a comprehensive view of the rear area of the vehicle and you should also look around the vehicle, using mirrors to confirm rearward clearance. Environmental conditions may limit effectiveness and view may become obscured. See *Owner's Manual* for additional limitations and details. **60.** The Tire Pressure Monitor System alerts the driver when tire pressure is critically low. For optimal tire wear and performance, tire pressure should be checked regularly with a gauge; do not rely solely on the monitor system. See *Owner's Manual* for additional limitations and details. **61.** Building and/or parking structures may limit system effectiveness. Stolen vehicle police report required to use Stolen Vehicle Locator. For additional assistance contact the Toyota Customer Experience Center at 1-800-331-4331. **62.** This device is not a substitute for safe and attentive driving practices. It is the driver's responsibility to maintain a lookout for pedestrians, cyclists, other cars and objects, and to drive the vehicle in a safe and attentive manner to avoid making contact. **63.** Trailer-Sway Control (TSC) is an electronic system designed to help the driver maintain vehicle control under adverse conditions. It is not a substitute for safe driving practices. Factors including speed, road conditions, weather and driver steering input can all affect whether TSC will be effective in preventing a loss of control. See *Owner's Manual* for additional limitations and details. **64.** Hill Start Assist Control is designed to help minimize backward rolling on steep ascents. It is not a substitute for safe driving judgment and practices. Factors including speed, grade, surface conditions and driver input can all affect whether HAC will be effective in preventing a loss of control. See *Owner's Manual* for additional limitations and details. **65.** Downhill Assist Control is designed to help driver maintain vehicle control and speed on steep, downhill descents and is not a substitute for safe driving judgment and practices. Factors including speed, grade, surface conditions and driver input can affect the DAC's ability to prevent loss of control. See *Owner's Manual* for additional limitations and details. **66.** The engine immobilizer is a state-of-the-art anti-theft system that is initiated when you insert your key into the ignition switch or bring a Smart Key fob into the vehicle. The engine will only start if the code in the transponder chip inside the key/fob matches the code in the vehicle's immobilizer. The transponder chip is embedded in the key/fob and can be costly to replace. If you lose a key or fob, your Toyota dealer can help or go to www.aloa.org to find a qualified locksmith in your area who can perform high-security key service. **67.** Before towing, confirm Stop and Start Engine System is disengaged (V6 gas models only). **68.** Payload Capacity is the calculation of GVWR minus curb weight and should be used for comparison purposes only. The maximum amount of passenger and cargo weight your vehicle can carry is the Load Carrying Capacity indicated on the label(s) on the driver's doorjamb.

Toyota strives to build vehicles to match customer interest and thus they typically are built with popular options and option packages. Not all options/packages are available separately and some may not be available in all regions of the country. See toyota.com for information about options/packages commonly available in your area. If you would prefer a vehicle without any or with different options, contact your dealer to check for current availability or the possibility of placing a special order.

Color(s) depicted may vary based on multiple factors, including ambient lighting and the format in which it is being viewed (e.g., computer, mobile device or print).

Some vehicles are shown with available equipment. Seatbelts should be worn at all times. For details on vehicle specifications, standard features and available equipment in your area, contact your Toyota dealer. A vehicle with particular equipment may not be available at the dealership. Ask your Toyota dealer to help locate a specifically equipped vehicle.

All information presented herein is based on data available at the time of posting, is subject to change without notice and pertains specifically to mainland U.S.A. vehicles only. Vehicles shown may be prototypes and/or shown with options. Actual models may vary.



Mobility

For Toyota Mobility program details, go to www.toyota.com/mobility or call the Toyota Brand Engagement Center at 1-800-331-4331