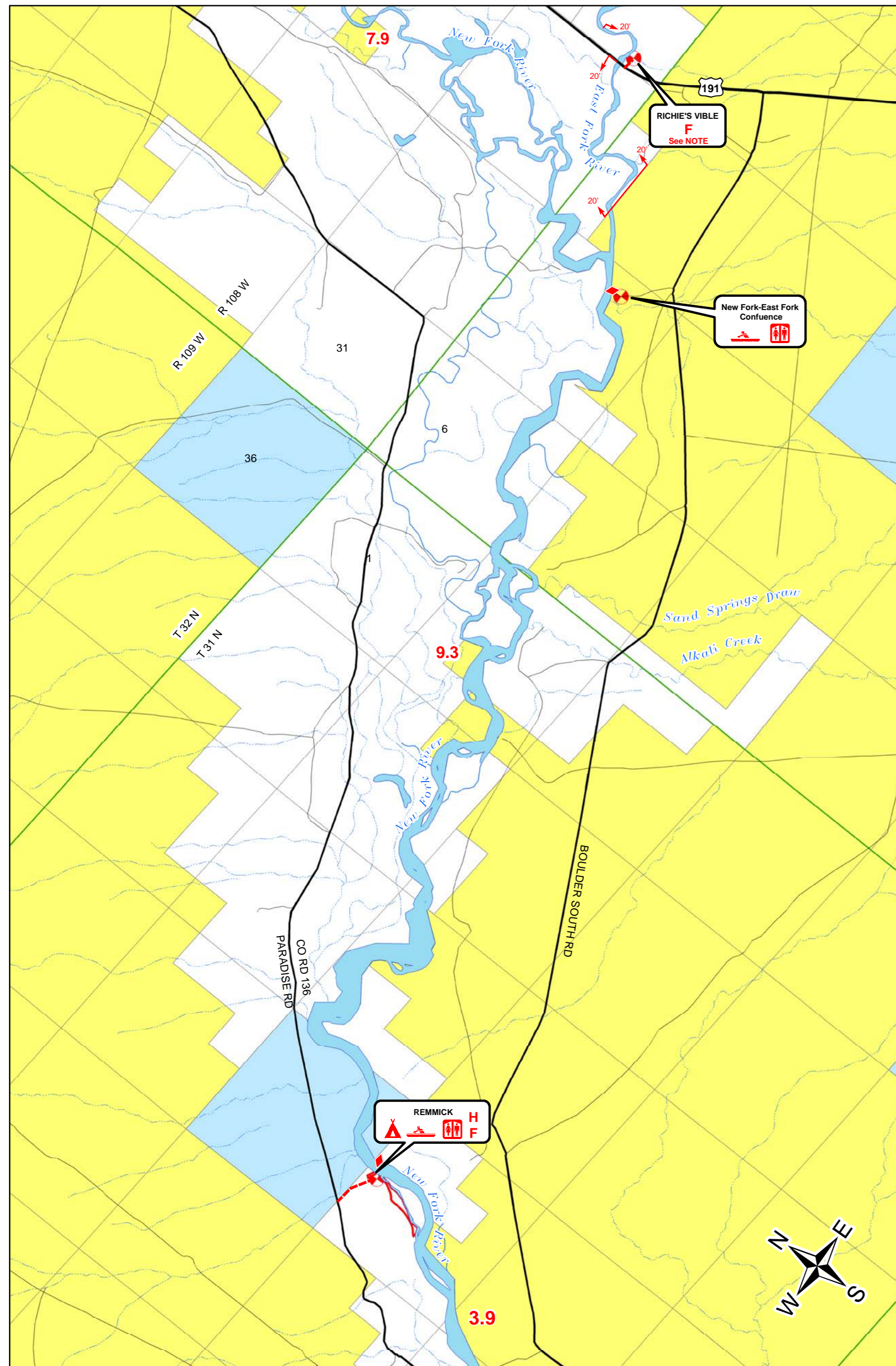
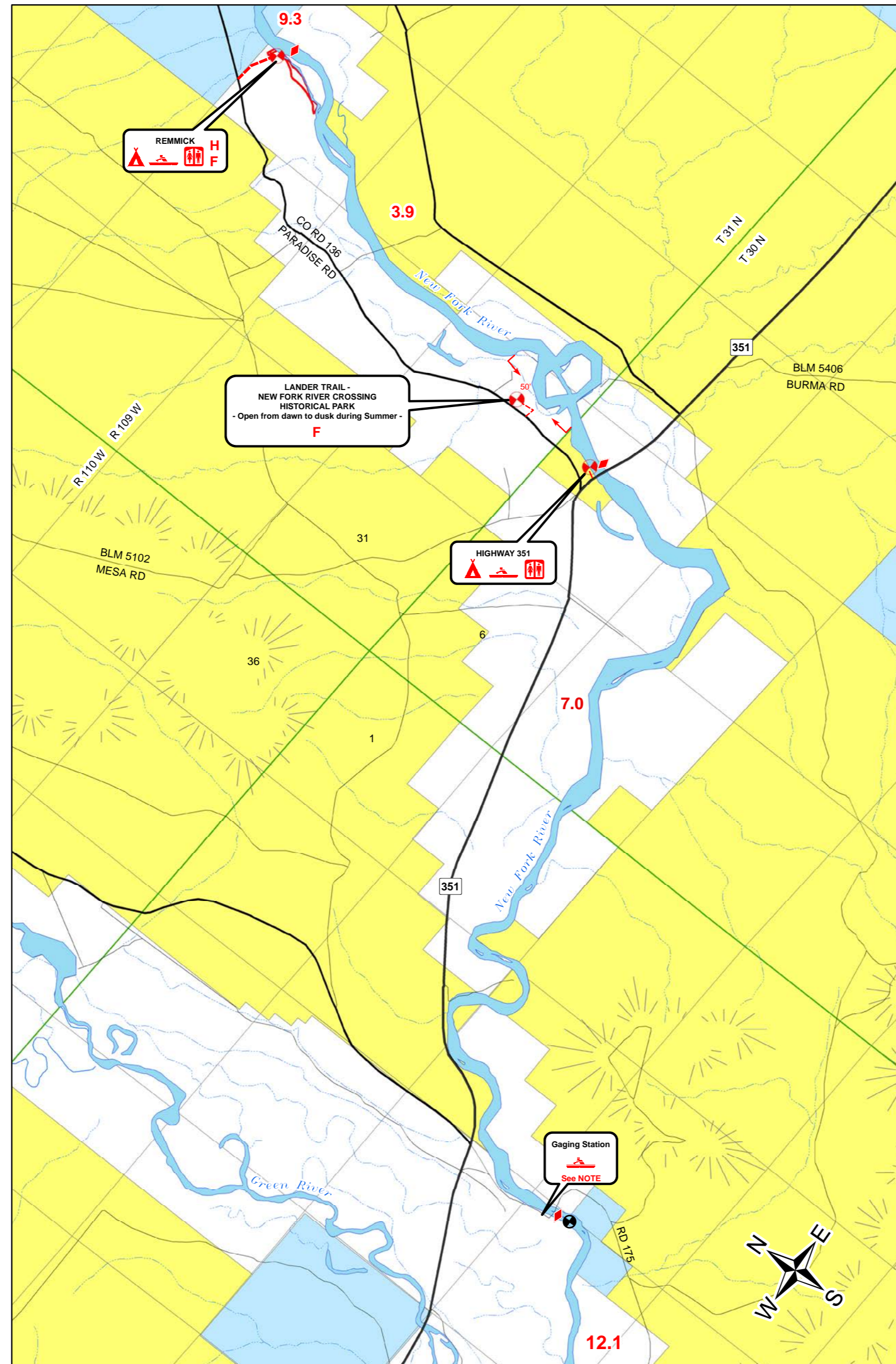


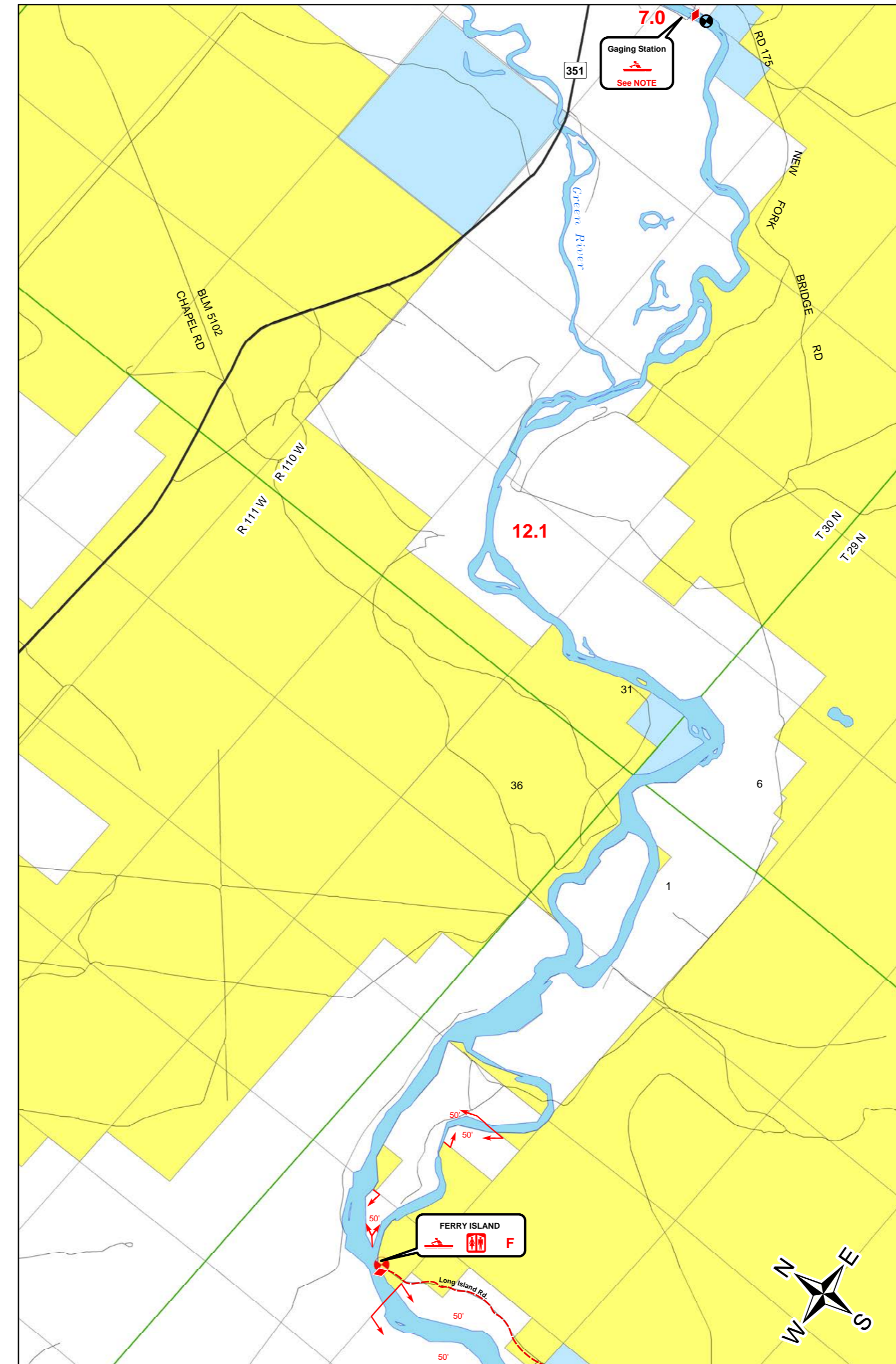
3 EAST FORK RIVER to REMMICK



4 REMMICK to GAGING STATION



5 GAGING STATION to FERRY ISLAND





Conserving Wildlife - Serving People

New Fork River Float Map

A Wyoming Game & Fish Department Publication



PINEDALE to THE GREEN RIVER

© 2016 Wyoming Game & Fish Department NOT FOR RESALE

- REMEMBER**
- Water over private land is public, but riverbanks and land under the river are private. If your boat is anchored while on private land, you are trespassing unless you have permission from the landowner.
 - Respect private landowners. Wyoming Watercraft Regulations states: "It is illegal to beach a boat and enter upon private land without permission from the landowner."
 - Wyoming State Law requires personal flotation devices (PFDs) for each person in the boat.
 - Camp in designated campsites when available and carry out all litter.
 - Your cooperation in preserving the New Fork River will ensure you and others may enjoy this area for years to come.



LEGEND

Federal Highway	Red Numerals Indicate River Mileage Between Points Marked With "Diamond Symbols"	1 inch = 3,250 feet 0 0.5 1 Miles
Highways	Camping Area	
County Roads	Comfort Station	Fishing Easement on Private Land Start or End of Easement Direction of Easement Width of Easement from Waters Edge Side of River Easement is on
Roads Other	Parking Area	
Access Road	Launch or Landing Area	H = HUNTING ACCESS
		F = FISHING ACCESS
		Game & Fish Access Easement
		Private
		Bureau of Land Management
		State

NOTE: Richie's Vible is closed from September 15 - October 15

LEGEND

State Highway	Red Numerals Indicate River Mileage Between Points Marked With "Diamond Symbols"	1 inch = 3,250 feet 0 0.5 1 Miles
Highways	Camping Area	
County Roads	Comfort Station	Fishing Easement on Private Land Start or End of Easement Direction of Easement Width of Easement from Waters Edge Side of River Easement is on
Roads Other	Parking Area	
Access Road	Launch or Landing Area	H = HUNTING ACCESS
		F = FISHING ACCESS
		Game & Fish Access Easement
		Private
		Bureau of Land Management
		State

NOTE: Gaging Station - undeveloped site with County Road access easement only

LEGEND

State Highway	Red Numerals Indicate River Mileage Between Points Marked With "Diamond Symbols"	1 inch = 3,250 feet 0 0.5 1 Miles
Highways	Camping Area	
County Roads	Comfort Station	Fishing Easement on Private Land Start or End of Easement Direction of Easement Width of Easement from Waters Edge Side of River Easement is on
Roads Other	Parking Area	
Access Road	Launch or Landing Area	H = HUNTING ACCESS
		F = FISHING ACCESS
		Game & Fish Access Easement
		Private
		Bureau of Land Management
		State

NOTE: Gaging Station - undeveloped site with County Road access easement only

FOR MORE INFORMATION

Wyoming Game & Fish Department Pinedale Regional Office 432 East Mill Street Pinedale, WY 82941 (307) 367-4353	U.S. Bureau of Land Management Pinedale Field Office 1625 West Pine Street Pinedale, WY 82941 (307) 367-5300	U.S. Forest Service Bridger-Teton National Forest 29 East Fremont Lake Road Pinedale, WY 82941 (307) 367-4326
--	--	---

RIVER INFORMATION

The New Fork River drainage begins at over 10,000 feet above sea level in the Wind River Mountain Range. After cascading down the mountains, it is captured in New Fork Lakes before flowing through a lower gradient area north of Pinedale, Wyoming. Much of this lower gradient section is privately owned, and the river is fairly small, so boaters have little interest in this section of river. However, public access and the amount of water increase below Pinedale, which marks the starting point for many float trips, and the upstream extent of this map. The river flows for almost 50 miles before meeting the Green River about six miles east of the town of Big Piney, Wyoming. Numerous boat ramps along this section of river give boaters many options for floats that can be completed in a single day. In addition, access easements on the New Fork River, Pine Creek, and the East Fork River allow anglers to fish from the shore on private land in a few locations.



Anglers on the New Fork River will find plenty of trout to pursue from Pinedale to the confluence with the Green River. Some sections of the river have more trout than others, due to differences in habitat quality. In general, the area upstream from the confluence with Pole Creek provides the best habitat and the highest densities of trout. This area contains many deep pools with abundant cover in the form of cottonwood logs and willows. In addition, riffles in this area provide ideal spawning habitat and produce plenty of aquatic insects for trout to feed on. Trout habitat declines further downstream, due to sediment input from eroding banks, tributary streams, and intermittent washes. However, even these areas hold enough trout to keep an angler's interest.



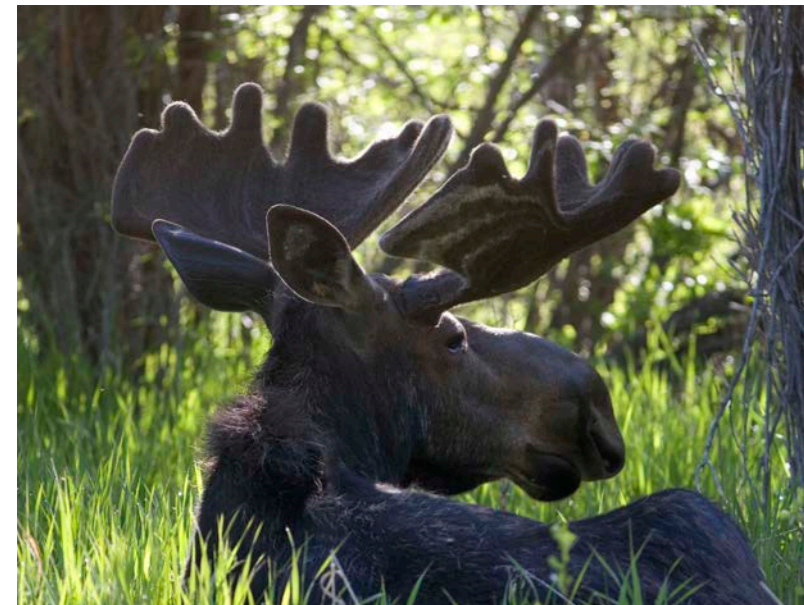
Brown trout make up the vast majority of trout found in the New Fork River, and all of them are naturally produced. Anglers will also occasionally catch rainbow trout and cutthroat trout. In addition, areas with deep pools hold large numbers of mountain whitefish. All sections of the river produce at least 100 trout per mile, and the reaches with the best habitat can produce over 1,800 trout per mile. The number of trout per mile in the New Fork River compares very favorably with the numbers in the Green River above Fontenelle Reservoir, even though the Green is a larger river.

Wildlife along the New Fork River
The mosaic of vegetation that grows in wet soils along rivers and creeks (known as the riparian area) provides rich habitat for a diversity of wildlife species. Riparian habitat makes up less than three percent of the western landscape, yet 80 percent of wildlife in Wyoming depends upon these areas during some portion of the year.

While floating the New Fork River you are likely to see a variety of wildlife including moose, deer, and up to 30 species of birds. Look for moose bedded down in shady spots beneath cottonwoods or munching on willows not far from the river's edge. Both mule deer and white-tailed deer, can be seen along the New Fork River. Many animals raise their young along the river. Please take care to avoid disturbing nesting birds and any young animals you may encounter.

Keep your eyes open for bald eagles perched on cottonwood branches overhanging the water, and listen for the raucous call of the belted kingfisher. These birds will be hunting for unsuspecting fish near the water's surface. A number of waterfowl species also use the river, including fish eaters such as the common merganser, and the largest of all waterfowl, the trumpeter swan, which eats aquatic plants. If you are lucky, you may see and hear common nighthawks, swooping for insects over the river, especially in the early evening hours. The distinct white wedge marks on their pointed wings make this an easy species to identify.

Fishing the New Fork River
A Wyoming fishing license is required for anyone 14 years old or older to fish in Wyoming. Special regulations apply on specific river reaches, so make sure you know the fishing regulation for the sections of river you will be fishing. Refer to the fishing regulations available through any license selling agent, Wyoming Game and Fish Department offices, or the department's website: <https://wgfd.wyo.gov/>



If you plan to catch and release fish, the following guidelines are recommended to give fish the greatest chance of survival:

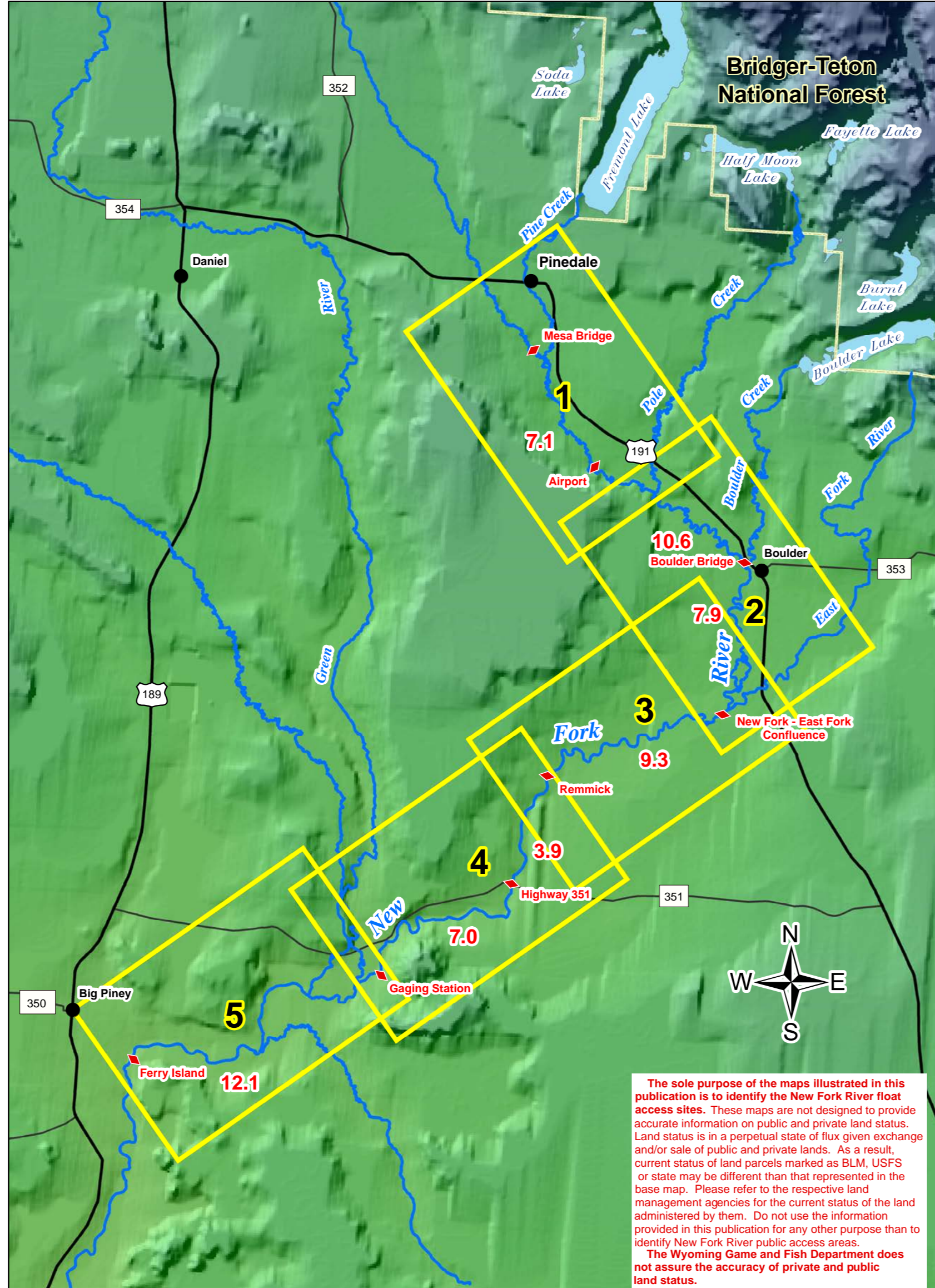
- Use pliers to flatten barbs on hooks. Fish caught with flattened barbs have a higher survival rate than fish caught on hooks with functional barbs. Use strong line to bring your catch in quickly.
- Land fish carefully and quickly without letting the fish flop on the ground or in the bottom of the boat. Be sure to wet your hands if you need to handle the fish. Dry hands and gloves remove protective mucus from fish that helps prevent disease.
- NEVER handle a fish by the gills. Handling causes damage to the gills and prevents the fish from breathing, leading to death.
- NEVER squeeze a fish.
- Remove hooks gently by using long-nose pliers or hemostats to remove the hook. If the hook cannot be seen, cut the line. If the fish is bleeding from the gills, it is likely to die, and you should keep it as part of your bag limit.
- Revive an exhausted fish by gently grasping tail with one hand and supporting the midsection with the other hand. Hold the fish in an upright position. Face the fish upstream in fairly calm water and allow water to pass through its gills. Release the fish in gentle current once its gills are working properly and it maintains its balance.

Floating the New Fork River
Taking a float trip can be a fun and exciting adventure, but only if you are prepared for any situation or emergency. Conditions on the river can change rapidly, especially after periods of rain or snowmelt. Be sure you know the flow conditions before you launch.

High flow conditions with fast currents can push a boater into hazards, such as submerged rocks or debris, and overhanging snags.

- Please consider these important steps before your trip:
- check weather and flow conditions
 - take maps of your planned route and know the boat launches and access points along the way
 - tell someone where you are going and when you expect to return
 - take clothing to suit the water and weather conditions
 - carry plenty of drinking water and food for your trip, and don't forget polarized sunglasses and sunscreen
 - bring a garbage bag for your trash - leave no trace so others can enjoy the pristine environment
 - take a first aid kit, a cell phone in a waterproof bag, basic repair tools and spare parts, and an extra paddle

VICINITY MAP



The sole purpose of the maps illustrated in this publication is to identify the New Fork River float access sites. These maps are not designed to provide accurate information on public and private land status. Land status is in a perpetual state of flux given exchange and/or sale of public and private lands. As a result, current status of land parcels marked as BLM, USFS or state may be different than that represented in the base map. Please refer to the respective land management agencies for the current status of the land administered by them. Do not use the information provided in this publication for any other purpose than to identify New Fork River public access sites. The Wyoming Game and Fish Department does not assure the accuracy of private and public land status.

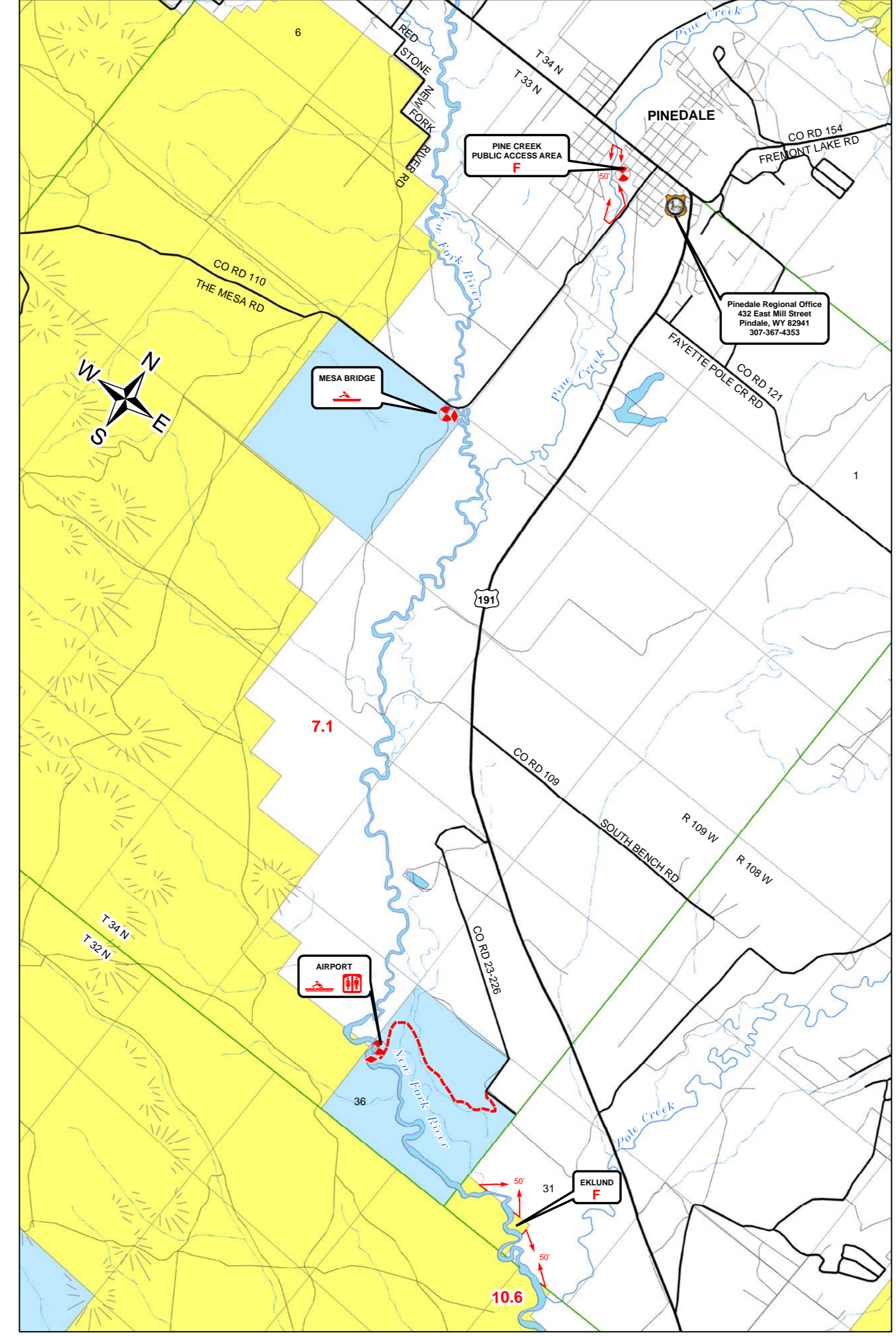
River Distances Between Points on the New Fork River ♦ Red Numerals Indicate River Mileage Between Points Marked With "Diamond" Symbols

	Mesa Bridge	Airport	Boulder Bridge	New Fork - East Fork River Confluence	Remmick	State Hwy 351	Gaging Station	Ferry Island (On Green River)
Mesa Bridge	-	7.1	17.7	25.6	34.9	38.8	40.8	57.9
Airport	7.1	-	10.6	18.5	27.8	31.7	38.7	50.8
Boulder Bridge	17.7	10.6	-	7.9	17.2	21.1	28.1	46.2
New Fork - East Fork River Confluence	25.6	18.5	7.9	-	9.3	13.2	20.2	32.3
Remmick	34.9	27.8	17.2	9.3	-	3.9	10.9	23.0
State Hwy 351	38.8	31.7	21.1	13.2	3.9	-	7.0	19.1
Gaging Station	40.8	38.7	28.1	20.2	10.9	7.0	-	12.1
Ferry Island (On Green River)	57.9	50.8	46.2	32.3	23.0	19.1	12.1	-

Area Covered by Detailed Map

Floating times vary considerably due to weather conditions, water conditions, and type of craft. As a general rule, flatbottom boats and rafts travel at a rate of about 2.5 to 3.5 mph during high water (late May to late June) and from one to two mph during low water (early July thru August). Canoes, kayaks, and boats with motors, travel faster.

1 MESA BRIDGE to EKLUND



LEGEND

- Federal Highway
- Highways
- County Roads
- Roads Other
- Access Road
- Parking Area
- Launch or Landing Area
- F = FISHING ACCESS
- Bureau of Land Management
- State
- Private

1 inch = 3,250 feet

Fishing Easement on Private Land

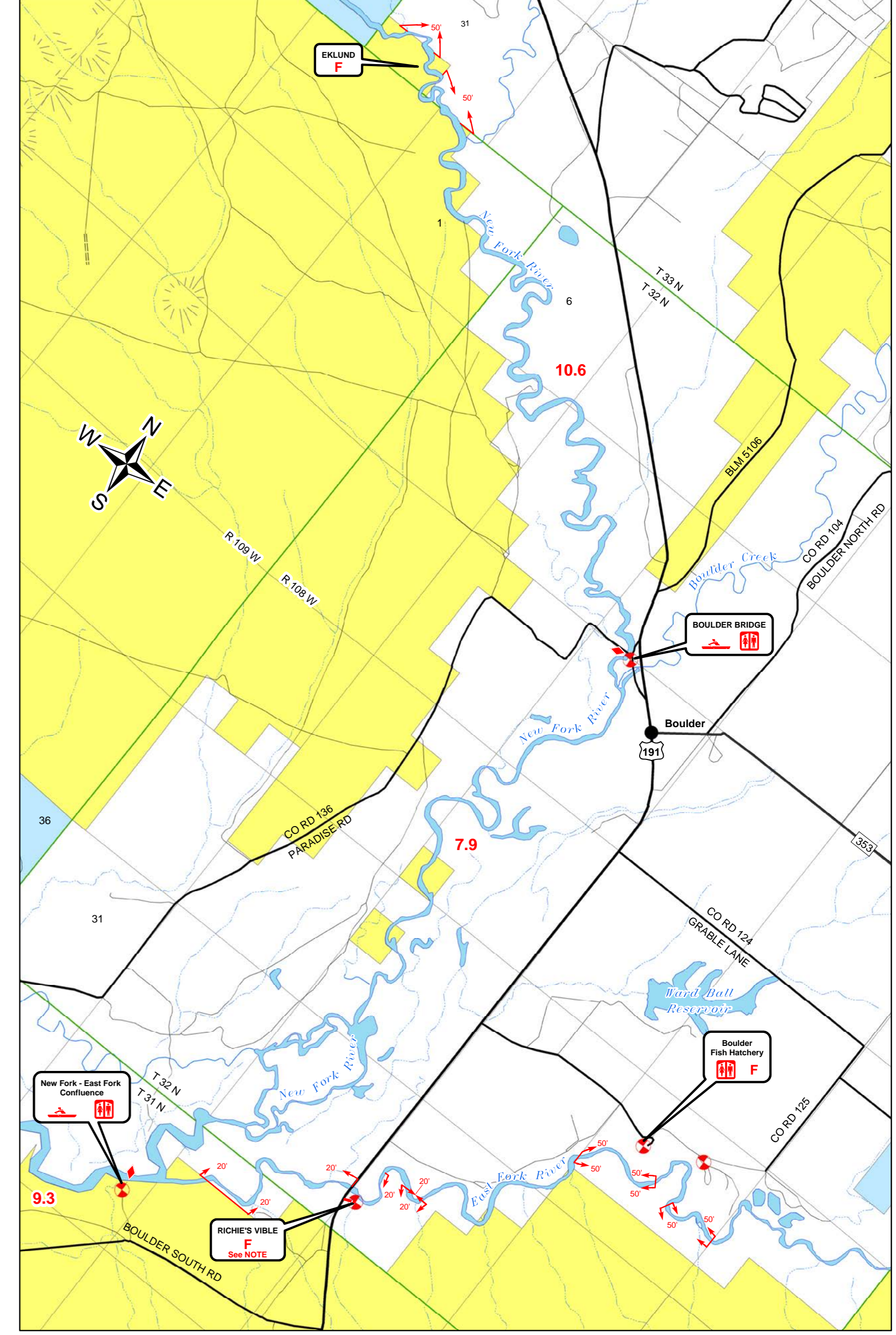
Start or End of Easement

Direction of Easement

Width of Easement from Waters Edge

End of Easement is on

2 EKLUND to EAST FORK RIVER



LEGEND

- Federal Highway
- Highways
- County Roads
- Roads Other
- Access Road
- Parking Area
- Launch or Landing Area
- F = FISHING ACCESS
- Bureau of Land Management
- State
- Private

1 inch = 3,250 feet

Fishing Easement on Private Land

Start or End of Easement

Direction of Easement

Width of Easement from Waters Edge

End of Easement is on

NOTE: Richie's Vible is closed from September 15 - October 15