



Warehouse Management Software (WMS)

Warehouse Management *Software*

Datex FootPrint® Warehouse Management Software (WMS)

is a Microsoft based solution, developed for maximum flexibility, scalability, ease of use and information visibility. Our warehouse management system includes sophisticated features and functionality typically found in top level WMS systems but at a more affordable price. Our system is designed to grow with your business and can be tailored to meet the needs of simple as well as highly complex operations.

Most warehouse management systems rely on static hard coding. This makes their systems inflexible and any changes to the system require costly programming fees. Datex FootPrint WMS includes our Workflow Designer, a feature that enables your IT staff (or outside IT professional) to make changes to business processes immediately. This feature saves money and enables your company to adapt quickly to changing business conditions and customers' needs. Our system also includes customizable "drag and drop" reporting so that your users can create reports to their own specifications as well as many other time, labor and money saving features.

Datex includes quarterly product upgrades as part of our support and maintenance agreement. This can save companies thousands of dollars every year and ensures that our clients always have the state-of-the-art technology on which your business depends.



Our priority is to provide our customers with the service that they deserve as fast as possible. Datex FootPrint® WMS handles everything that we need to succeed.

-Karen Reece, Eskimo Cold Storage

Features and Functionality:

Real Time Inbound Processing:

- ✓ Blind and bulk receiving
- ✓ ASN receiving
- ✓ Regular, partial blind receipt
- ✓ Catch/variable weight
- ✓ Automated scale tickets

Inventory Management:

- ✓ Track and trace by Lot, SKU, UPC, Vat Code or ingredient
- ✓ Serialization/serial number control
- ✓ Apparel matrix
- ✓ Automatic replenishment

Order Management and Fulfillment:

- ✓ Order consolidation
- ✓ Backorder processing

Real Time Outbound Processing:

- ✓ Variety of picking strategies: single, cluster, bulk or wave
- ✓ FIFO, FEFO, FMFO, LIFO and more
- ✓ Wave building & management
- ✓ Pick and pack processing
- ✓ RF pick
- ✓ Load building

Quality Control / Quality Assurance:

- ✓ Ability to handle multiple simultaneous holds
- ✓ Inspections, quarantines, taste testing

General Warehouse Operations:

- ✓ Barcode parsing
- ✓ Temperature capture
- ✓ Pallet tracking
- ✓ Physical / Cycle Counting
- ✓ Cloaked owner transfer
- ✓ Owner transfer
- ✓ Warehouse transfer
- ✓ Ability to restrict inventory locations
- ✓ HAZMAT reporting configured with tags and SSRS
- ✓ Ability to create customer specific labels
- ✓ Ability to create customer specific Bill of Lading
- ✓ Simultaneous allocation across multiple warehouses

More Features and Functionality:

Billing:

- ✓ Deferred handling revenue tracking
- ✓ Real time revenue capture
- ✓ Auto-invoice generation
- ✓ Client master files define billing rules
- ✓ Accessorial charge capture
- ✓ Easy to use billing wizard

Yard Management:

- ✓ Cross docking and trans loading
- ✓ Dock door appointment scheduling

Security Features:

- ✓ Rules based security permissions
- ✓ Signature capture
- ✓ Audit trail
- ✓ Ability to restrict employees by department or zone

EDI / System Integration:

- ✓ EDI Enabled / UCC128 / MH10
- ✓ Integration capability with most ERP, MRP, shipping and material handling systems

Document Management:

- ✓ Attach any file to inventory records
- ✓ Ability to create requirements to attach documents, photos or other files before proceeding with business processes

System Upgrades:

- ✓ Included (free) with paid support and maintenance agreements
- ✓ Released quarterly

User Friendly System Features:

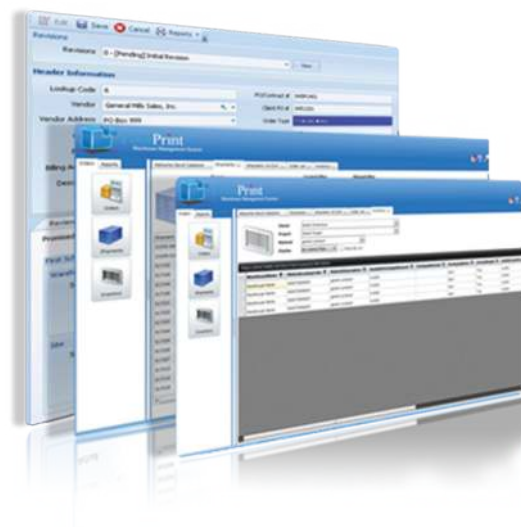
- ✓ Familiar user interface
- ✓ Alerts and notifications
- ✓ Ability to configure views
- ✓ Ability to create User Defined Fields (UDFs)
- ✓ Multi-lingual
- ✓ Multi-currency
- ✓ User overview of pending tasks & critical information

Workflow:

- ✓ System does not rely on static hard coding
- ✓ Uses Microsoft Windows Workflow Foundation and rules your company creates to customize business processes quickly and easily

Reporting:

- ✓ Ad hoc customizable reporting
- ✓ Uses SSRS/Crystal
- ✓ Standard reports available
- ✓ Ability to customize account profiles, invoices & reports



I am very confident saying Datex was the right choice for our business. We work with multiple WMS systems. I can definitely say at this point the one that is more technically leading edge, more GUI graphic friendly, easier to use would be the Datex system.

-Jeff Antos, Colony Brands

Separate Modules Available:

- ✓ Production: Assembly, Kitting, Packaging and Light Manufacturing
- ✓ Cartonization
- ✓ ePortal (Web portal)
- ✓ Executive Dashboard

Who Will This Benefit?

- ✓ Warehouse operators
- ✓ Wholesalers
- ✓ Distributors
- ✓ Manufacturers
- ✓ Logistics providers
- ✓ Third party logistics (additional module required)

System Benefits

- ✓ Increased accuracy
- ✓ Increased inventory visibility
- ✓ Improved space utilization
- ✓ Increased labor productivity
- ✓ Increased throughput
- ✓ Decreased operational expenses
- ✓ Increased customer service

Contact us today for a demonstration on how Datex FootPrint WMS can help your productivity.



www.datexcorp.com



Marketing@datexcorp.com



1 800.933.2839

For more information on our WMS Scan Here

