

Guide

DreamBox Learning Welcome Kit for Teachers

Implementation Success Guide

- Welcome and Introduction
- Self-Guided Tour of DreamBox Learning Math
- Getting Your Students Started
- Using DreamBox in Your Classroom
- Using Your Insight Dashboard



Fall 2019 - Spring 2020



Welcome to the DreamBox Learning Community!

All of us at DreamBox are excited to partner with you to have amazing experiences in math this year! We know how hard you work to engage, encourage, and teach your students every day. That's why we're working tirelessly to provide you with powerful tools and support so that all your students achieve their goals in math.

Like you, we know that all students are brilliant. And we understand that you, your classroom, and your students are unique. That's why DreamBox is the perfect partner for your class – our program isn't like other math software programs that treat every student the same. Instead, we've designed the most effective personalized digital math curriculum that engages and inspires their amazing minds to actively “think and do” math while also building their confidence. If there's a math concept you think your students are going to need support with, DreamBox is here to help because our lessons, games, and virtual manipulatives enable students to make sense of math in new ways that are only possible in a digital environment with DreamBox's just-in-time scaffolding and differentiation.

DreamBox also has innovative tools and valuable resources that support the important work you do each day. Whether you're monitoring student growth using a long-term assignment with our AssignFocus™ feature, deepening your own understanding of math concepts using our on demand MyFlexPD modules, or collaborating on DreamBox Nation to connect with thousands of other educators using DreamBox, we're confident you'll find what you need to do your best every day.

We're humbled and honored to be a part of your classroom and the math learning of your students. We value our partnership, so we hope you'll share your feedback and ideas.

Sincerely,

Tim Hudson, PhD
Chief Learning Officer
DreamBox Learning

THE DREAMBOX DIFFERENCE

Innovative K-8 Digital Curriculum

- Built by educators using established principles from learning science and effective pedagogy, and proven to help your students develop conceptual understanding, critical thinking, and fluency in mathematics
- Rigorous, engaging lessons along coherent learning pathways
- Intelligent Adaptive Engine™ responds in real time to how students solve problems

Tools to Help You Differentiate

- Actionable, real-time formative data through your Insight Dashboard
- Progress monitoring and quick assessments with AssignFocus™
- Home connection to build strong relationships with your students' families

Tools to Support You

- MyFlexPD: Embedded, on demand PD modules based on the math your students are learning
- Classroom resources in your Insight Dashboard
- DreamBox Nation: connect with your community of DreamBox educators

We know there's a lot to learn about DreamBox! That's why we've curated a checklist of some key actions and information to help you kick off your school year with DreamBox and get your students started learning math. You'll want to complete this self-guided tour below prior to your school's scheduled Professional Development sessions, which will provide more detailed information and learning experiences to help you create a successful DreamBox math classroom this year!

How can DreamBox support you? Get familiar with DreamBox so you can make the most of your math program this year.

- Log in to your DreamBox Insight Dashboard. (Hint: Look in your inbox for an email with instructions and your account information.)
- See a quick overview of DreamBox by viewing the "Welcome" video.
- Download and view the "Educator Introduction to DreamBox Learning" file in your Resources section of the dashboard.

It's our turn to get to know you! Setup your Insight Dashboard account.

- Go to Settings in your Insight Dashboard. Update your Class Settings and Engagement Restrictions with your information.
- Check your Classroom Roster(s) in the Settings tab to review for accuracy.
- Before your students play in DreamBox**, you'll want to set their appropriate Initial Placement Level. Once they start playing in DreamBox, the program will automatically adapt and differentiate in real time to each student's right level of readiness.

Expert Tip: Print your student login cards in preparation for introducing them to DreamBox. [Learn how.](#)

Get your students started.

- Follow the student login instructions provided in your "Welcome" email. [Learn more.](#)
- Practice logging in as a student.
- Schedule 30-40 minutes for your students' first session to introduce DreamBox.
- Go to the Resources tab in your Insight Dashboard and explore the Classroom Motivators to use with your students.
- Print your Parent Invitation letters to send home with your students. [Learn how.](#)

Expert Tip: Don't forget to double check your students' Initial Placement Level in Settings before your students start playing!

Now that you have access to DreamBox in your classroom, here are some ideas for introducing it to your students.

Prepare to Launch DreamBox in your Classroom

By now you've had a chance to check your roster¹ and prepare your devices². So, it's a good time to schedule at least **30-40 minutes** for your students' first session.

Practice logging in as a student and take a few minutes to get to know the environment your students will experience before you begin.

Get Your Students Started

We recommend providing your Classroom URL on a projector screen or whiteboard, and walk through the login process together.

Provide enough class time for students to sign in, complete at least one lesson, and log out properly. This is a great time to establish expectations and healthy habits with your students for DreamBox.

Establish Expectations and Encourage Healthy Habits

As educators, we know that students do best with expectations that are clear and encouraged from the beginning (see Figure A).

Encourage These Healthy Habits for Success in DreamBox

- 1 **Try every problem:** persist even when it is hard. ✓
- 2 **Finish every lesson:** persevere instead of choosing another lesson. ✓
- 3 **Utilize in-lesson support:** the feedback, hints, and help are created to assist you. ✓
- 4 **Use headphones with volume on:** listen to the directions, assistance, and feedback. ✓
- 5 **Work Independently:** don't let others do your work for you. ✓



Figure A

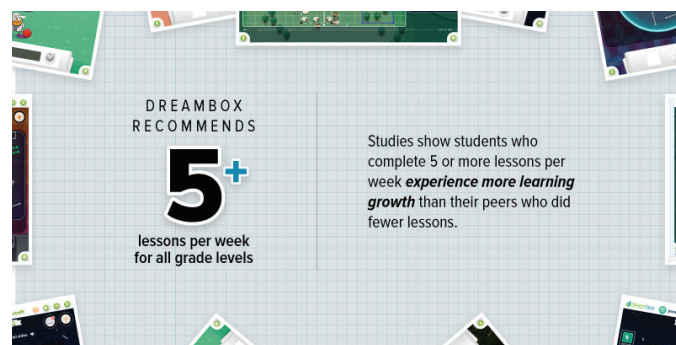
Quick Tip: You can find your classroom URL, school code (iPads), and parent letters by clicking the “Login Information” button in your dashboard.

Ongoing Best Practices

We suggest that you provide **20-30 minutes** per session to ensure that your students are able to fulfill the recommended usage per week (see Figure B).

Holding a class meeting after all of the students have completed one or two lessons is beneficial. The purpose of the meeting is to have the students share their experience and to reiterate expectations and habits for using DreamBox.

For more suggestions for a successful implementation, take a look at our **Using DreamBox in Your Classroom** guide in the Resources tab of your Dashboard.



DREAMBOX
RECOMMENDS

5+

lessons per week
for all grade levels

Studies show students who complete 5 or more lessons per week **experience more learning growth** than their peers who did fewer lessons.

Figure B

1. The first time a student uses DreamBox, Initial Placement is their starting point within the DreamBox curriculum. This is determined by their current grade level. As they work through lessons, DreamBox's continuous formative assessment will adjust their learning pathway toward their optimal learning zone.
2. There are many platforms, devices, and browsers that have the capabilities to play DreamBox. [View system requirements for schools.](#)

We understand that there aren't enough hours in the day, especially when it comes to your classroom. By partnering with DreamBox, you can enhance your math program without adding additional work to your already busy day. Here are some ways that teachers have used DreamBox successfully in their classroom.



Small Groups & Station Rotation

Split your students up into small groups to rotate through math stations. This enables you to strategically target differentiated math instruction, conferences, or work collaboratively on math activities.



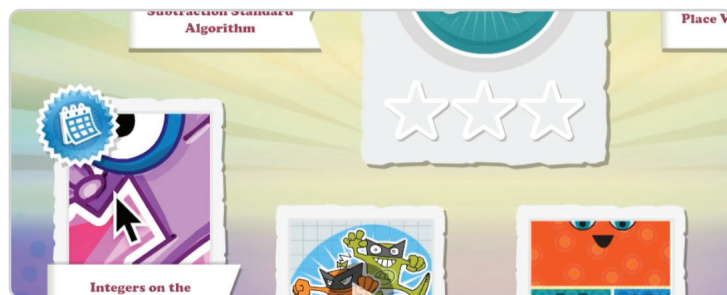
Whole Class

While all of your students are working on DreamBox independently, they will experience targeted scaffolding and in-lesson support. This model leaves you open for one-on-one assistance, answering questions, and engaging in math dialogue.



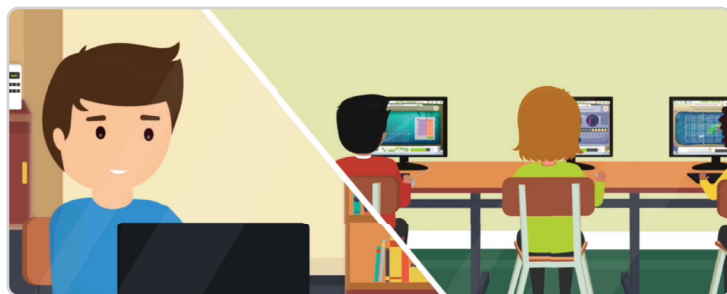
AssignFocus

As your students create their own learning paths within DreamBox, AssignFocus enables you to target content aligned with your curriculum. You can assign lessons that introduce new concepts, correlate with what you are teaching today, or as a review before an assessment.



Special Education & Response to Intervention

The dashboard provides multiple tools to address all types of learners. You can identify struggling students in the Classroom Overview or Student Overview reports. From there you can utilize AssignFocus with long-term assignments and monitor students as they progress.



Home Connection

DreamBox provides an opportunity to strengthen family involvement in their child's learning. The Family Insight Dashboard enables meaningful home-to-school connections that raise awareness of the curriculum, strategies, and progress of students in real time, so teachers and family learning guardians can work together for student success.

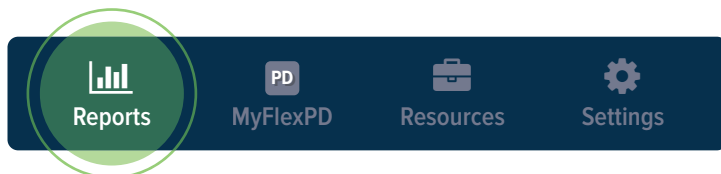
Quick Tip:

Send your students home with the Parent Invitation Letter which provides directions on how to access the Family Dashboard. You can find this letter in your Insight Dashboard under Login Information.

DreamBox can be a powerful partner for you in your classroom. Research suggests that DreamBox increases student growth which makes for the perfect complement to your math curriculum. We suggest providing at least an hour a week for your students, broken into a few sessions.

Learn about how to use data to inform instruction in the **Insight Dashboard Overview** guide in the Resources tab of your Dashboard.

Using data to inform instruction is the ideal situation, but collecting and analyzing copious amounts of data can be a struggle. That's the purpose of the Insight Dashboard – to provide centralized access to student data and reports that inform instruction, and enable you to differentiate learning with AssignFocus™ and DreamBox curriculum. It connects you to Professional Development through MyFlexPD™ and gives you resources such as classroom motivators and certificates, as well as your personal and classroom Settings.



Reports

Overview: Presents classroom and student data at a glance. Teachers can select a custom time frame to see usage, standards met, and proficiency.

Activity: Teachers can see a real-time updated queue of student lesson plan and receive per lesson information about behavior and proficiency.

Standards: Each selected grade level's standards are displayed with student progress.

AssignFocus: Create long- or short-term assignments that automatically differentiate for students. Teachers can play sample lessons before assigning, and receive reporting about each assignment.



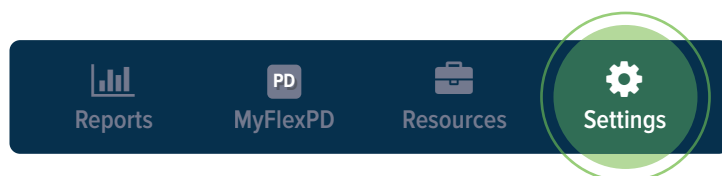
MyFlexPD

A catalog of Professional Development courses designed to support teachers in understanding DreamBox Learning, as well as math strategies, and relationships. Teachers can also access PD related to their students' play from the Activity and AssignFocus tabs in Reports.



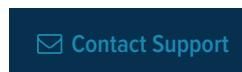
Resources

This section is the go-to space for learning more about DreamBox and how best to use it. It's a collection of downloadables, videos, and links offering quick access to Student Motivators, Teacher Tools, DreamBox Nation (A Community for Educators), [DreamBox Support](#), and more.



Settings

Teachers can adjust his/her profile information and class settings, but can also restrict engagement rewards during school hours, and check/edit their roster.



Our "Contact Support" link will help you get the answers you need, either through our sortable support articles or a quick email/call to our support team.

Need some help or have questions? Visit our Support site, email us, or call at 877-451-7845 ext 3.