

# Mental Health in FLORIDA

The  
FACTS



# Table of Contents

Facts about Mental Health in Florida Florida – Mental Health Statistics	5
Facts about Mental Health in Florida Florida – Facilities and Hospitalization Statistics	9
Facts about Mental Health in Florida Florida – Incarceration Statistics	13
Facts about Mental Health in Florida Florida – Suicide Statistics	17
Facts about Mental Health in Florida Florida – Substance Abuse Statistics	21
Facts about Mental Health in Florida Florida – Workplace Statistics	23



# Florida – Mental Health Statistics



## Access to Care Ranking


**61.7%** of adults with Any Mental Illness (AMI) in Florida did not receive treatment  
National average – **55.8%**

The Access Ranking indicates how much access to mental health care exists within a state. The access measures include access to insurance, access to treatment, quality and cost of insurance, access to special education, and workforce availability. A ranking of 1 indicates that a state provides the most access to insurance and mental health treatment. A ranking of 50 indicates the least level of access to insurance and mental health treatment in the U.S.

## Florida Ranks 44th

Source: *The State of Mental Health in America 2018, Mental Health America*

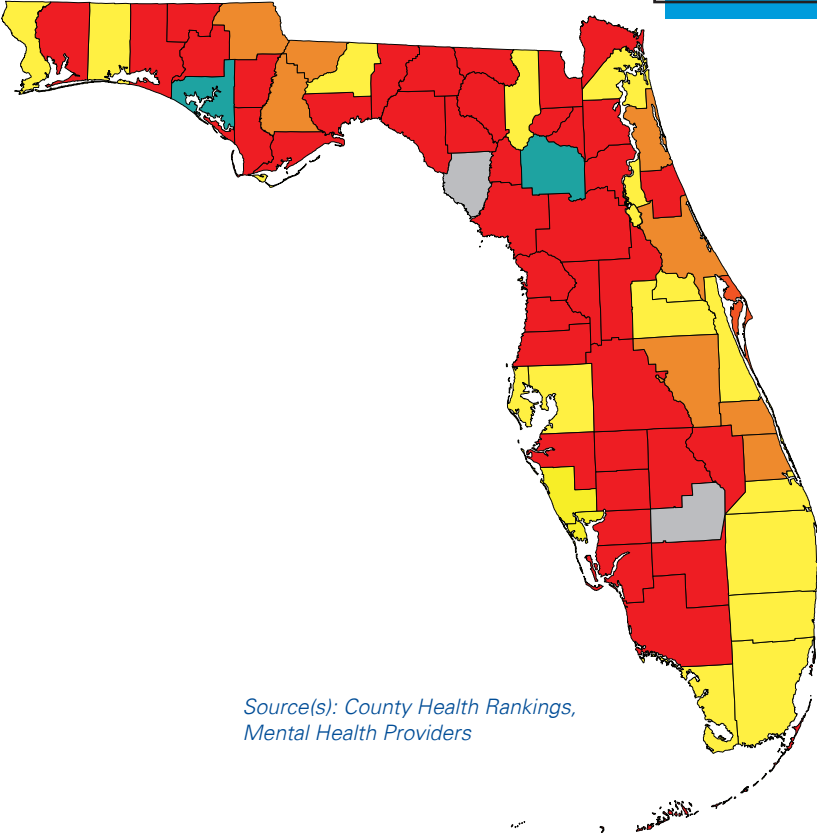
**1 in 6**



**1 in 6 adults in the U.S. experience any mental illness within a given year**

Source: 2016 National Survey on Drug Use and Health (NSDUH) by the Substance Abuse and Mental Health Services Administration (SAMHSA)

## Ratio of Population to Mental Health Providers, 2016



- Key:**
- Red = 1:1,001+
  - Orange = 1:751-1,000
  - Yellow = 1:501-750
  - Green = 1:1-500
  - Grey = NA

Source(s): County Health Rankings, Mental Health Providers

## Facts about Mental Health in Florida



# Florida – Mental Health Statistics

Suicide counts are higher than homicides in **62** of Florida's **67** counties. **93%** of the state experienced more suicides than homicides in 2016.

Resident deaths by selected causes, by county, Florida, 2016

	Suicide	Homicide		Suicide	Homicide
Florida	3,122	1,292	Lafayette	0	0
Alachua	32	8	Lake	52	13
Baker	5	1	Lee	113	46
Bay	45	7	Leon	26	12
Bradford	1	4	Levy	5	3
Brevard	134	30	Liberty	1	1
Broward	243	104	Madison	0	2
Calhoun	2	0	Manatee	81	25
Charlotte	38	3	Marion	64	29
Citrus	29	4	Martin	34	8
Clay	38	11	Monroe	19	3
Collier	45	8	Nassau	21	6
Columbia	9	9	Okaloosa	42	13
Miami-Dade	241	214	Okeechobee	8	6
Desoto	8	0	Orange	126	118
Dixie	2	0	Osceola	36	20
Duval	131	111	Palm Beach	230	89
Escambia	61	23	Pasco	104	14
Flagler	20	2	Pinellas	214	54
Franklin	2	1	Polk	87	46
Gadsden	3	7	Putnam	15	7
Gilchrist	3	0	Saint Johns	43	8
Glades	4	1	Saint Lucie	51	15
Gulf	2	0	Santa Rosa	43	7
Hamilton	2	0	Sarasota	91	12
Hardee	6	0	Seminole	71	28
Hendry	5	6	Sumter	19	1
Hernando	38	6	Suwannee	6	3
Highlands	24	6	Taylor	4	3
Hillsborough	163	84	Union	6	4
Holmes	4	1	Volusia	103	26
Indian River	29	5	Wakulla	7	2
Jackson	3	2	Walton	15	2
Jefferson	2	2	Washington	8	1

Source(s): Florida Life Course Indicator Report: Mental Health, Florida Health; USA Suicide: 2015 Official Final Data

# Florida – Mental Health Statistics

Florida ranked last in the U.S.  
Per Capita Mental Health Support, FY14

U.S. **125.9**

Florida **36.05**

Florida's per capita support for mental health services ranks last among the states

Source(s): National Association of State Mental Health Program Directors Inc. (NRI-inc). 2014. SMHA Mental Health Actual Dollar and Per Capita Expenditures by State. FY 2014 (Using Civilian Population).





# Florida – Facilities and Hospitalization Statistics

## Florida Psychiatric Hospitals: Length of Stay (LOS) Statistics

State Psychiatric Hospital LOS Discharged Adult Patients (Median)

**167 Days**

US Median – 77 days

Average State Psychiatric Hospital LOS Discharged Adult Patients

**342 Days**

US Average – 242 days

Average State Psychiatric Hospital LOS Resident Clients in Facility More than 1 year

**910 Days**

US Average – 1,579 days

Source(s): Florida 2016 Uniform Reporting System Mental Health Data Results, Substance Abuse and Mental Health Services Administration, accessed on November 22, 2017

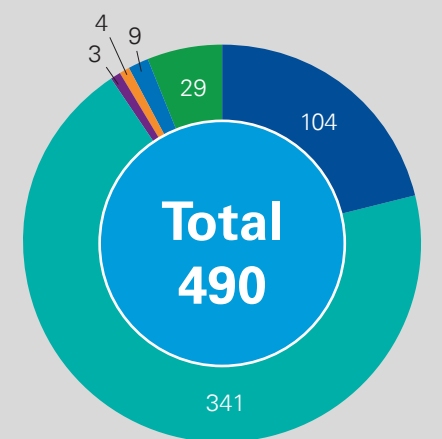
## Florida Mental Health Facilities

Facility Type	Total Facilities	Inpatient Facilities	Residential Facilities
Psychiatric public hospitals	4	4	–
Psychiatric private hospitals	41	41	6
General hospitals	47	47	–
Residential Treatment Centers for children	22	–	22
Residential Treatment Centers for adults	40	–	36
Veteran Affairs Medical Centers	26	3	–
Community Mental Health Centers	98	11	6
Outpatient mental health facilities	186	–	–
Multi-settling mental health facilities	17	4	9
<b>Total</b>	<b>490</b>	<b>112*</b>	<b>84*</b>

Note: \*Total number of facilities may be different from the sum because of unavailability of data due to confidentiality issues.

Source(s): National Mental Health Services Survey (N-MHSS): 2016, Department of Health and Human Services – Substance Abuse and Mental Health Services Administration, accessed on November 16, 2017

### Facility by Operation



- Private for-profit
- Private non-profit
- State mental health authority
- Other state government agency
- Regional/district authority
- Department of Veteran Affairs

## Facts about Mental Health in Florida



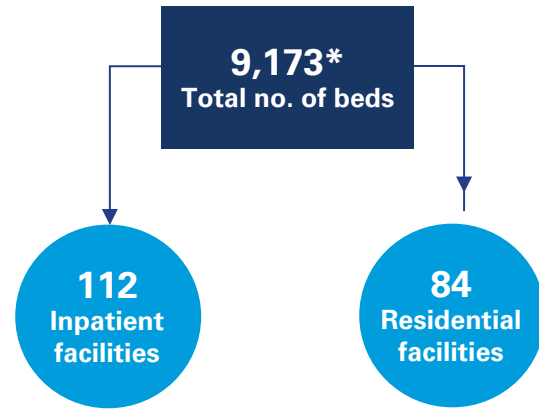
# Florida – Facilities and Hospitalization Statistics

## Florida Mental Health Facilities

**490**  Mental health treatment facilities in Florida

**40%**, or 196 of the total 490 facilities provide court-ordered outpatient treatment

**30%**, or 147 of the total 490 facilities offer post traumatic stress disorder (PTSD) treatment



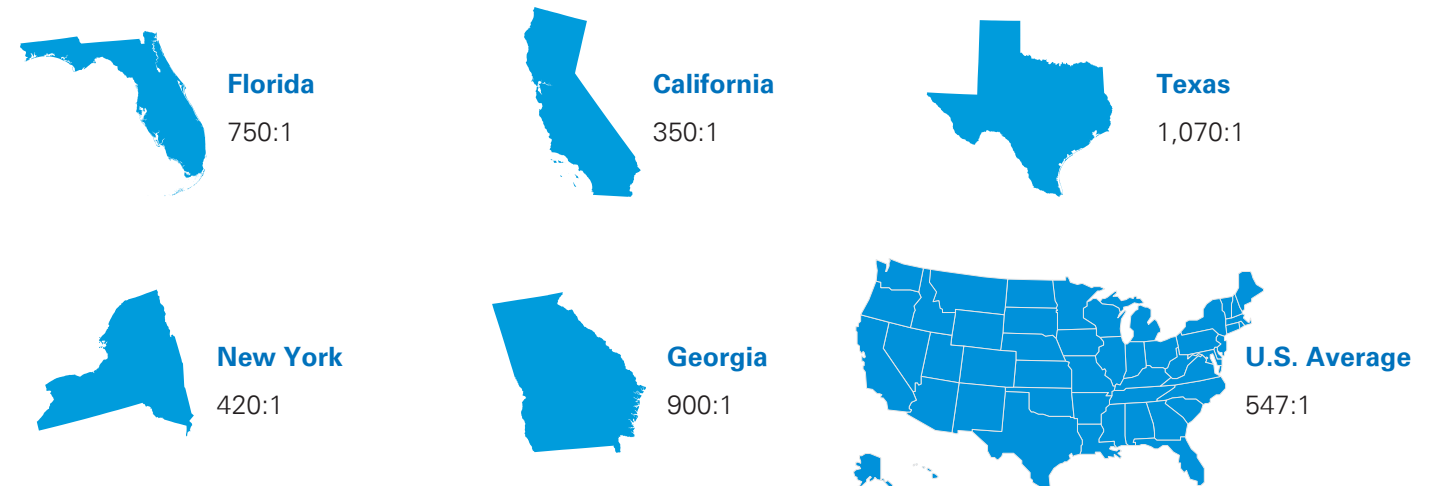
\*Data as of April 29, 2016



# Florida – Facilities and Hospitalization Statistics

## Mental Health Providers – Overall Number

Ratio of population to mental health providers, 2016	
California	350:1
New York	420:1
<b>Florida</b>	<b>750:1</b>
Georgia	900:1
Texas	1,070:1
<b>Overall U.S. Average is 547:1</b>	



Source(s): Mental Health Providers, County Health Rankings, accessed on November 22, 2017.  
Mental Health Providers is the ratio of the county population to the number of mental health providers including psychiatrists, psychologists, licensed clinical social workers, counselors, marriage and family therapists, mental health providers that treat alcohol and other drug abuse, and advanced practice nurses specializing in mental health care. In 2015, marriage and family therapists and mental health providers that treat alcohol and other drug abuse were added to this measure. Data comes from the National Provider Identification data file.



# Florida – Incarceration Statistics

## Access to Care Ranking vs Adult Incarceration Rates

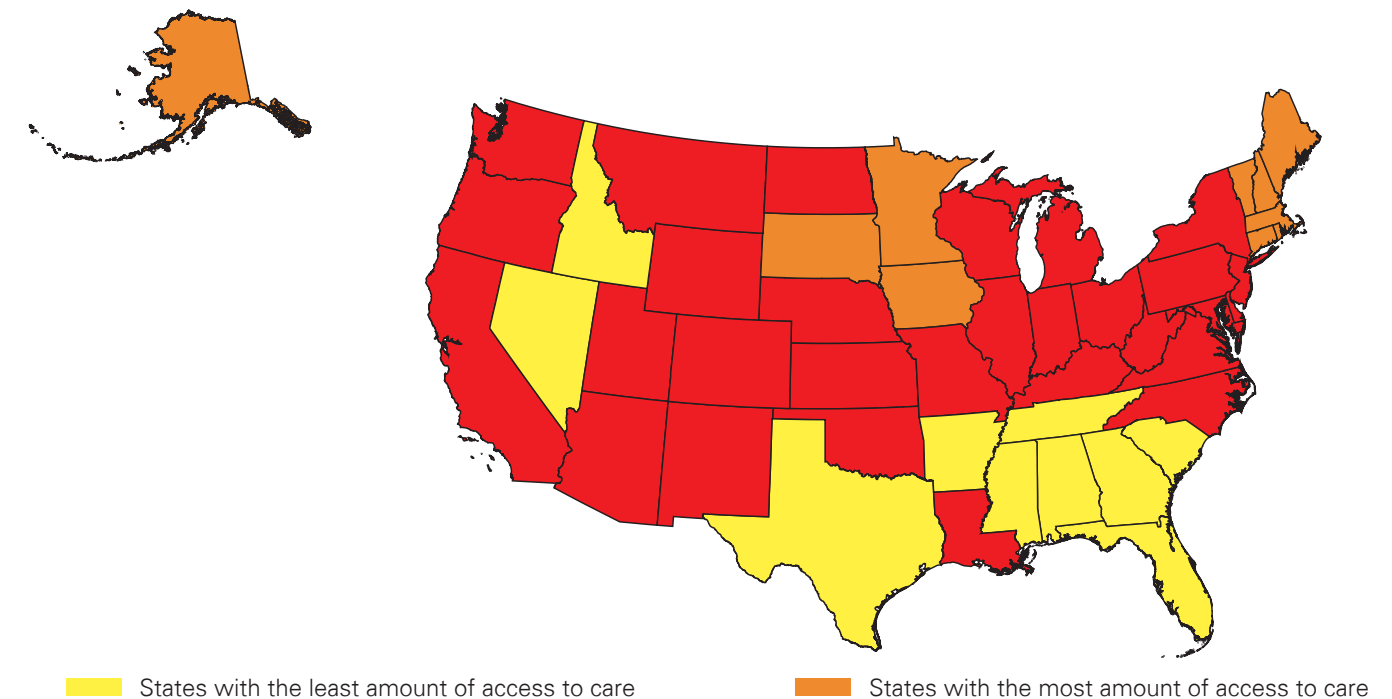
In 2015, **The Sentencing Project** ranked the states based on the number of people incarcerated in state prison per **100,000 residents**.

Comparing state-by-state rates of incarceration with the access to mental health care ranking shows a strong positive correlation between rates of adult who are in the criminal justice system and lack of access to mental health care (**r =.69, p=000**).

**6 out of the 10 states with the least access to mental health care also have the highest rates of incarceration:**

- Florida
- Alabama
- Arkansas
- Mississippi
- Texas
- Georgia

### States with the least access to mental health care



## Facts about Mental Health in Florida





# Florida – Incarceration Statistics

State ranking based on the rate of adult incarceration (per **100,000 people**).  
The access to care ranking is the corresponding sum of scores for each state.

Rank	State	State Imprisonment (per 100k) Ranked Lowest to Highest	Access to Care Ranking (Sum of Scores)	Rank	State	State Imprisonment (per 100k) Ranked Lowest to Highest	Access to Care Ranking (Sum of Scores)
1	Maine	153	-8.9271	26	Oregon	378	-2.02091
2	Rhode Island	178	-5.74207	27	Colorado	383	-3.69017
3	Massachusetts	188	-13.2939	28	Pennsylvania	394	-4.20215
4	Minnesota	194	-8.34278	29	Wyoming	408	-0.15832
5	North Dakota	214	-2.1477	30	South Dakota	421	-6.20106
6	New Hampshire	219	-8.12996	31	South Carolina	429	5.899403
7	Utah	237	1.967375	32	Nevada	434	10.03874
8	Vermont	241	-16.4588	33	Tennessee	437	7.496869
9	New Jersey	241	-3.39434	34	Michigan	437	-3.06855
10	Washington	254	-1.32436	35	Delaware	440	-3.702
11	Hawaii	257	-0.0282	36	Indiana	442	2.705804
12	New York	265	-2.75729	37	Ohio	444	0.201136
13	Iowa	282	-4.9148	38	Virginia	449	2.801135
14	Nebraska	283	1.018337	39	Kentucky	474	0.966987
15	Kansas	322	-1.91273	40	Idaho	489	5.036744
16	Connecticut	326	-8.71021	41	Florida	513	5.069235
17	New Mexico	329	-1.7386	42	Georgia	517	6.606583
18	Maryland	346	-4.01988	43	Missouri	526	2.687519
19	California	349	-0.58227	44	Texas	584	6.108368
20	North Carolina	358	-0.51341	45	Arizona	593	3.509007
21	Montana	360	2.587972	46	Mississippi	597	7.758902
22	Wisconsin	371	-3.78764	47	Arkansas	599	5.236254
23	West Virginia	372	2.357443	48	Alabama	633	7.916734
24	Alaska	374	-4.56163	49	Oklahoma	700	2.975511
25	Illinois	375	0.690505	50	Louisiana	816	4.597951

States with the least amount of access to care

States with the most amount of access to care

Source(s): 'Access to Mental Health Care and Incarceration', Mental Health America, accessed on November 25, 2017





# Florida – Suicide Statistics

In 2014, suicide was Florida’s 10th leading cause of death, with 2,961 individuals taking their own lives. On average, one Floridian dies by suicide every three hours, and over twice as many die by suicide as by homicide according to the American Foundation for Suicide Prevention.



## Facts about Mental Health in Florida



### Suicide death rates: 2016

Florida has a slightly higher suicide rate than the national average

	No. of Deaths by Suicide	Rate per 100,000 Population	State Rank
Florida	3,035	13.84	28
Nationally	42,773	12.93	

### Adults with Serious Thoughts of Suicide:

- 1 Florida – 3.59% / 563,000
- 2 Connecticut – 3.49% / 97,000
- 3 Texas – 3.46% / 678,000

National average: 3.99%

Source: The State of Mental Health in America 2018, Mental Health America

### Florida Suicide Facts: 2016

IN FLORIDA, SUICIDE IS THE...

**2nd Leading**

cause of death for ages 25-34

**3rd Leading**

cause of death for ages 10-24

**4th Leading**

cause of death for ages 35-44

**5th Leading**

cause of death for ages 55-64

**8th Leading**

cause of death for ages 55-64

**16th Leading**

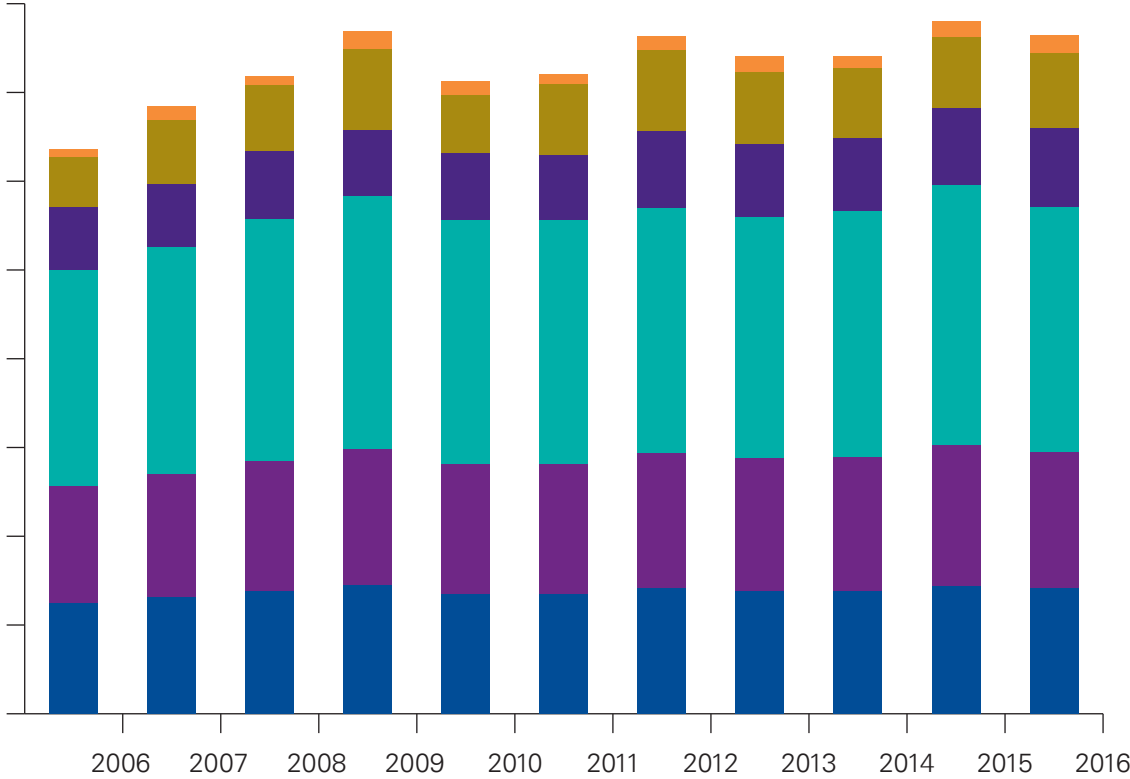
cause of death for ages 65 & older

Source(s): 'Suicide: Florida 2016 Facts & Figures', FASP; 'Florida Life Course Indicator Report: Mental Health', Florida Health; USA Suicide: 2015 Official Final Data, accessed on December 7, 2017

# Florida – Suicide Statistics

Resident suicide deaths and rates per 100,000 population, by race and gender, Florida Census Years 1970–2000 and 2006–2016

Rates Per 100,000 Population

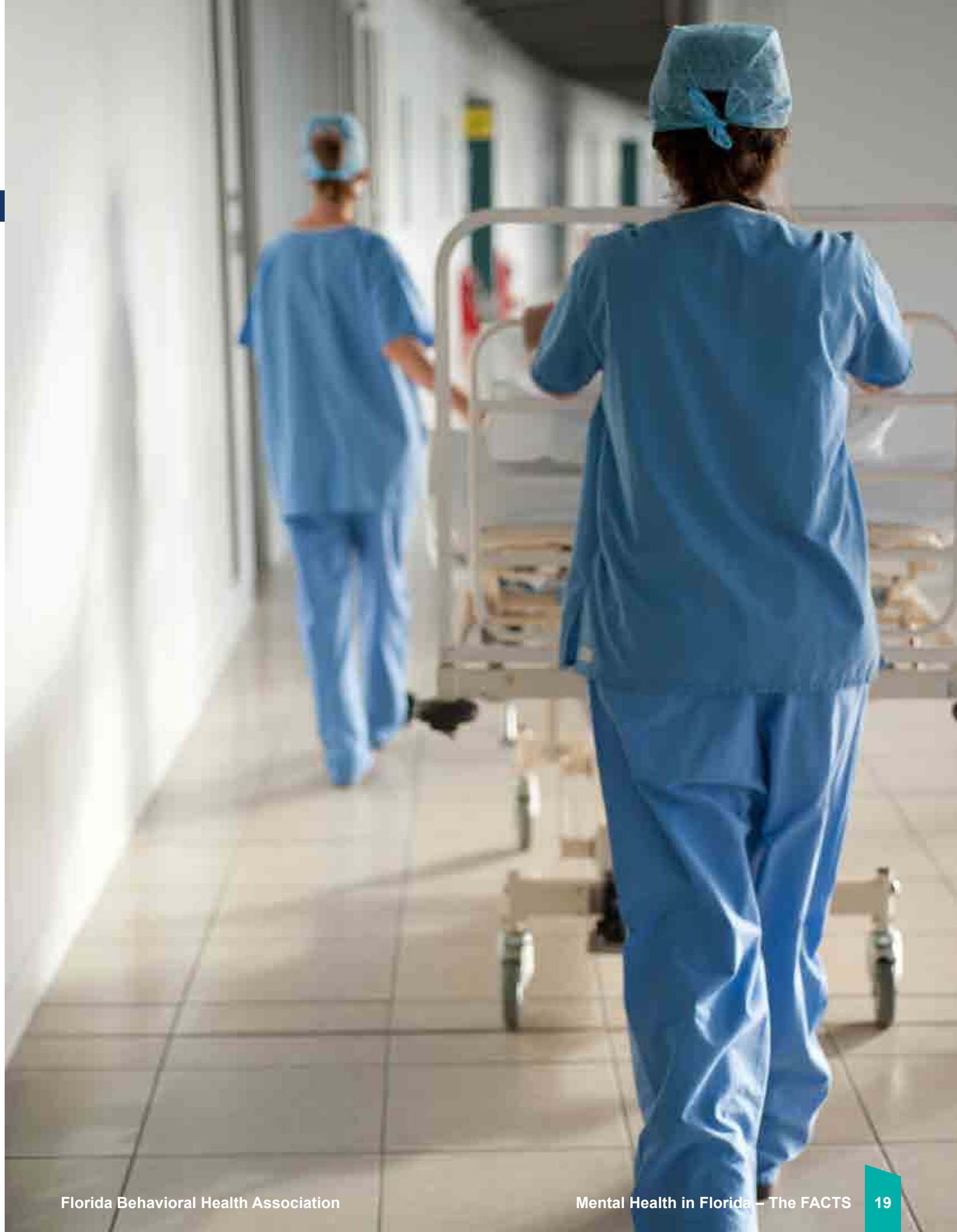


- AADR Total
- White Male
- Black Male
- Total
- White Female
- Black Female

Source(s): 'Florida Life Course Indicator Report: Mental Health', Florida Health; USA Suicide: 2015 Official Final Data, accessed on December 7, 2017

Suicide counts are higher than homicides in **62** of Florida's **67** counties. **93%** of the state experienced more suicides than homicides in 2016.

\*refer to the table on page #9





# Florida – Substance Abuse Statistics

## Adults with Dependence or Abuse of Illicit Drugs or Alcohol

Rank	State	%	#
1	Tennessee	7.18	354,000
2	Arkansas	7.23	159,000
3	Utah	7.33	146,000
4	Alabama	7.55	276,000
5	Kentucky	7.7	254,000
6	Maine	7.92	83,000
7	South Carolina	7.92	287,000
8	Illinois	7.95	771,000
9	Oklahoma	7.98	226,000
★ 10	Florida	7.99	1,227,000
11	Mississippi	7.99	175,000
12	Georgia	8.01	589,000
13	New Jersey	8.01	544,000
14	Texas	8.03	1,536,000
15	Michigan	8.06	609,000
16	Iowa	8.10	189,000
17	Missouri	8.26	376,000
18	Minnesota	8.35	343,000
19	North Carolina	8.42	623,000
20	Louisiana	8.44	289,000
21	Hawaii	8.51	89,000
22	California	8.57	2,475,000
23	Washington	8.60	456,000
24	Idaho	8.61	101,000
25	Pennsylvania	8.64	853,000
26	Virginia	8.66	538,000

Rank	State	%	#
27	Delaware	8.70	62,000
28	New York	8.74	1,331,000
29	Connecticut	8.82	244,000
30	Maryland	8.82	398,000
31	Nevada	8.86	187,000
32	West Virginia	8.86	128,000
33	Indiana	8.90	436,000
34	Ohio	8.94	784,000
35	Massachusetts	8.96	471,000
36	North Dakota	9.11	50,000
37	New Mexico	9.12	141,000
38	Wyoming	9.13	40,000
39	Kansas	9.19	194,000
40	South Dakota	9.23	58,000
41	Oregon	9.38	287,000
42	Montana	9.49	74,000
43	Nebraska	9.56	132,000
44	Vermont	9.71	48,000
45	Alaska	9.74	51,000
46	Wisconsin	9.77	427,000
47	Colorado	9.78	389,000
48	New Hampshire	9.83	102,000
49	Arizona	9.87	489,000
50	Rhode Island	10.42	86,000
51	District of Columbia	12.51	66,000
	National	8.47	20,245,000

**8.47%** of American adults report having a substance use or alcohol problem

Source: The State of Mental Health in America 2017, Mental Health America



## Facts about Mental Health in Florida





# Florida – Workplace Statistics



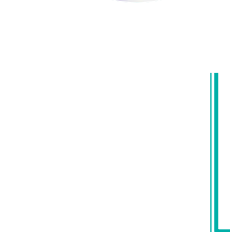
## Facts about Mental Health in Florida



**Work is good for mental health, but a negative working environment can lead to physical and mental health problems.**



**Depression and anxiety have a significant economic impact; the estimated cost to the global economy is \$1 trillion per year in lost productivity.**



**Harassment and bullying at work are commonly reported problems and can have a substantial adverse impact on mental health.**



**There are many effective actions that organizations can take to promote mental health in the workplace; such actions may also benefit productivity.**

**Available cost-benefit research on strategies to address mental health points towards net benefits. For example, a recent World Health Organization (WHO-led study) estimated that for every \$1 put into scaled up treatment for common mental disorders, there is a return of \$4 in improved health and productivity.**

*Source: Mental health in the workplace, Information sheet, World Health Organization, September 2017*

This public information resource is provided to you by the

**Florida Behavioral Health Association**

2868 Mahan Drive, Suite 1  
Tallahassee, Florida 32308  
850-878-2196



*The FBHA would like to acknowledge and thank KPMG LLP's Tallahassee office for their support and assistance in creating this resource.*