

DS-40 User's Guide

Contents

DS-40 User's Guide	7
Scanner Basics	8
Scanner Parts Locations	8
Scanner Parts.....	8
Scanner Buttons and Lights.....	11
Optional and User Replaceable Epson Scanner Parts	13
Powering Your Scanner	13
Installing Batteries	13
Using the Optional AC Adapter.....	15
Changing the Power Off Setting.....	16
Loading Originals	18
Loading Originals in the Input Slot.....	18
Original Document Loading Capacity	20
Plastic Card Loading Capacity	21
Wi-Fi Networking	23
Network Security Recommendations	23
Connection Mode Switch.....	23
Connecting to an Existing Wi-Fi Network	25
Manually Connecting to a Wi-Fi Network.....	26
Wi-Fi Protected Setup (WPS).....	28
Using WPS to Connect to a Network.....	28
Using WPS PIN Mode to Connect to a Network.....	29
Setting Up Network Scanning.....	31
Determining the Scanner's IP Address	34
Direct Wi-Fi Mode Setup	34
Enabling a Direct Wi-Fi Connection.....	35
Using WPS to Set Up a Direct Wi-Fi Connection	36
Epson DocumentScan App for iOS/Android.....	37
Scanning	38
Starting a Scan from a Scanner Button	38

Assigning Start Button Settings or Scan Jobs.....	39
Scanning with Document Capture Pro or Document Capture	39
Scanning with Epson Scan.....	42
Available Image Adjustments	44
Starting a Scan from a Scanning Program	45
Scanning Special Projects.....	47
Convert Scanned Documents to Editable Text (OCR).....	47
Scanning Using OCR - Windows	47
Scanning Using OCR - Mac	49
Scanning to a SharePoint Server or Cloud Service	51
Cleaning and Transporting Your Scanner.....	54
Cleaning Your Scanner	54
Cleaning Inside Your Scanner.....	54
Replacing Batteries	56
Calibrating Your Scanner	58
Transporting Your Scanner	59
Solving Problems	61
Scanner Light Status	61
Solving Scanning Problems	63
Scanner Does Not Turn On or Turns Off Unexpectedly.....	63
Scanner Button Does Not Work as Expected	64
Scanning Software Does Not Operate Correctly	65
Cannot Start Epson Scan	65
Original Feeds Incorrectly in Scanner.....	66
Original Jams in Scanner.....	67
Scanning is Slow	68
Solving Network Scanning Problems	68
Cannot Scan Over a Network	68
Scanner Cannot Connect to a Wireless Router	70
Solving Scanned Image Quality Problems	71
Back of Original Image Appears in Scanned Image	71
Scanned Characters are Blurry	72
Characters are not Recognized During Conversion to Editable Text (OCR)	72

Ripple Patterns Appear in an Image	73
Spots or Lines Appear in All Scanned Images	73
Scanned Image Edges are Cropped	73
Uninstall Your Scanner Software.....	74
Uninstalling Scanner Software - Windows	74
Uninstalling Scanner Software - Mac.....	75
Where to Get Help.....	75
Technical Specifications	77
Windows System Requirements	77
Mac System Requirements	78
General Specifications	78
Dimension Specifications	79
Electrical Specifications	79
Environmental Specifications	80
USB Interface Specifications.....	80
Network Interface Specifications	81
Safety and Approvals Specifications	81
Notices	83
Important Safety Instructions.....	83
Battery Safety Instructions	84
Restrictions on Copying	85
Default Delay Times for Power Management for Epson Products.....	86
Trademarks	86
Copyright Notice.....	86
Open Source Software License	87
Info-ZIP Copyright and License	90
A Note Concerning Responsible Use of Copyrighted Materials.....	92
Copyright Attribution	92

DS-40 User's Guide

Welcome to the DS-40 *User's Guide*.

For a printable PDF copy of this guide, [click here](#).

Scanner Basics

See these sections to learn about the basic features of your scanner.

[Scanner Parts Locations](#)

[Powering Your Scanner](#)

[Changing the Power Off Setting](#)

Scanner Parts Locations

See these sections to identify the parts on your scanner.

[Scanner Parts](#)

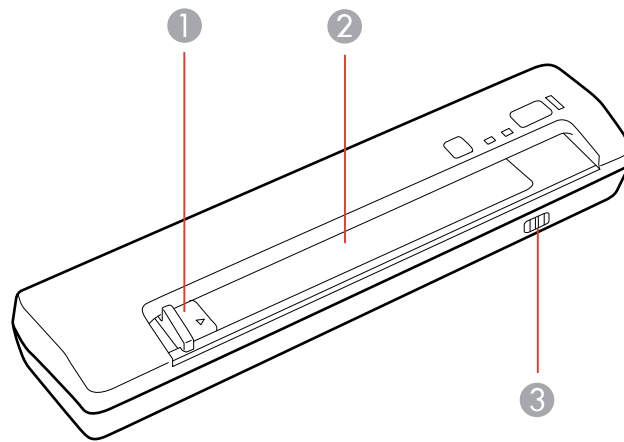
[Scanner Buttons and Lights](#)

[Optional and User Replaceable Epson Scanner Parts](#)

Parent topic: [Scanner Basics](#)

Scanner Parts

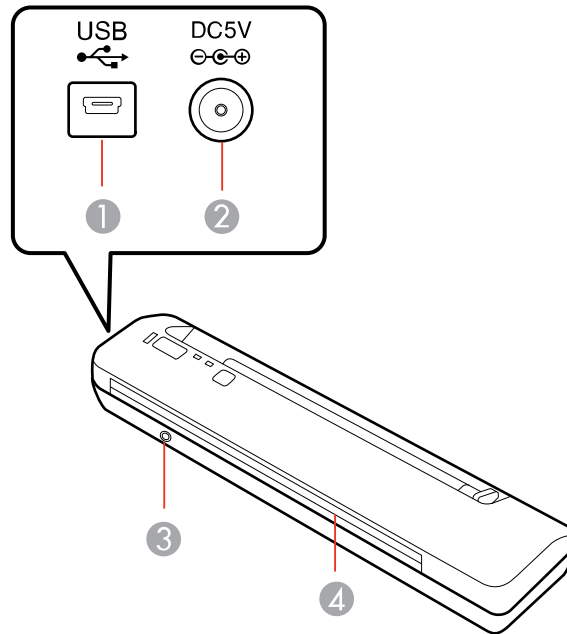
Front



1 Edge guide

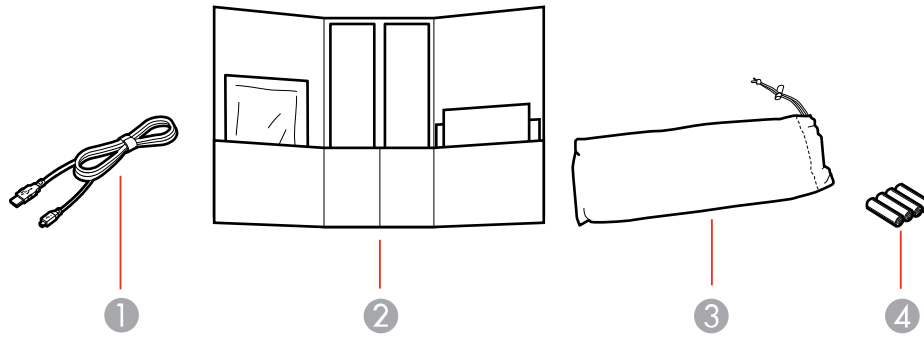
- 2 Input slot
- 3 Connection mode switch

Back



- 1 USB interface connector
- 2 DC inlet
- 3 The **Connect** button
- 4 Output slot

Accessories

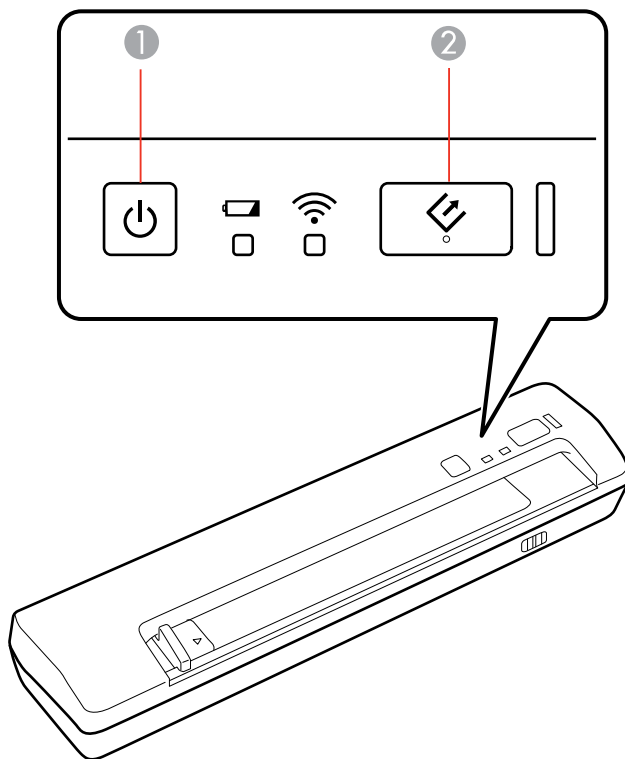




- 1 USB cable
- 2 Accessory kit
- 3 Carrying bag
- 4 4 AA batteries

Parent topic: [Scanner Parts Locations](#)

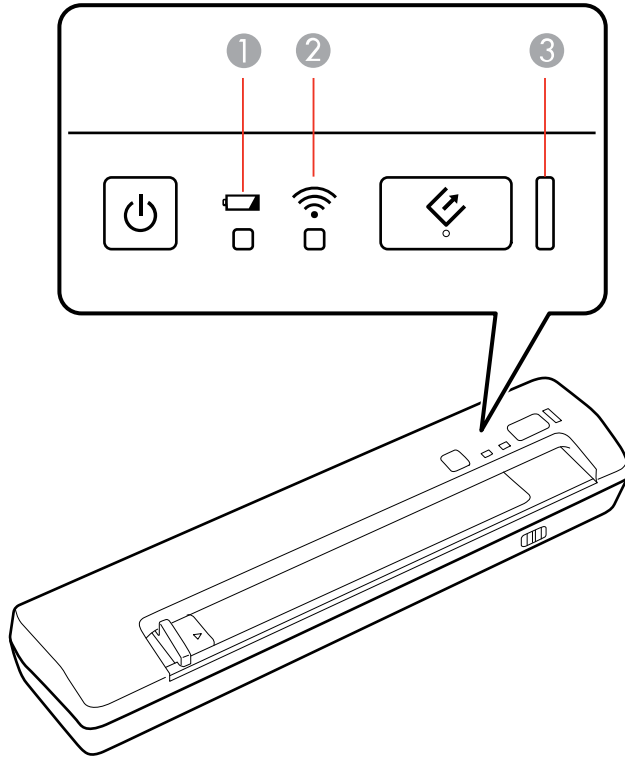
Scanner Buttons and Lights



Buttons



- 1 The  power button
- 2 The  start button

Lights



- 1 The  low battery light
- 2 The  Wi-Fi light
- 3 The ready light

Parent topic: [Scanner Parts Locations](#)

Related references
[Scanner Light Status](#)

Optional and User Replaceable Epson Scanner Parts

You can purchase genuine Epson accessories at epson.com (U.S. sales), epson.ca (Canadian sales), or epson.com.jm (Caribbean sales). You can also purchase accessories from an Epson authorized reseller. To find the nearest one, call 800-GO-EPSON (800-463-7766) in the U.S. or 800-807-7766 in Canada.

Part	Part number
AC adapter	B12B867201
Maintenance sheet kit	B12B818291

Parent topic: [Scanner Parts Locations](#)

Powering Your Scanner

See these sections to learn about the power management options for your scanner.

If you connect your scanner using a USB connection, you can power the scanner through the USB port.

If you connect your scanner using a Wi-Fi connection, you must install the batteries or connect the optional AC adapter.

[Installing Batteries](#)

[Using the Optional AC Adapter](#)

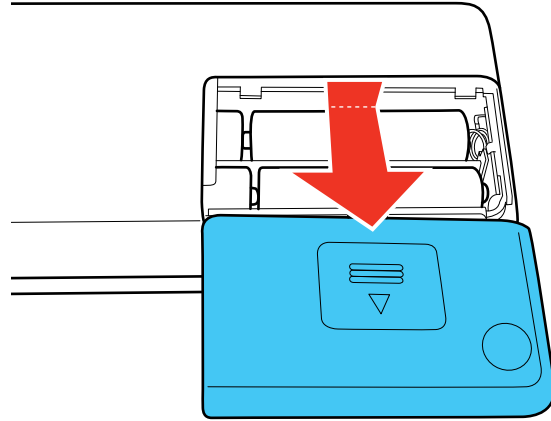
Parent topic: [Scanner Basics](#)

Installing Batteries

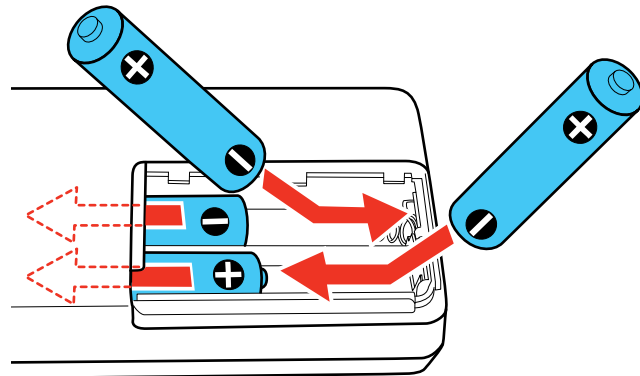
You can use 4 AA batteries (Ni-MH, alkaline, or lithium) to power your scanner.

Caution: Use only the type of batteries specified in this manual. Do not install batteries of different types, or mix new and old batteries.

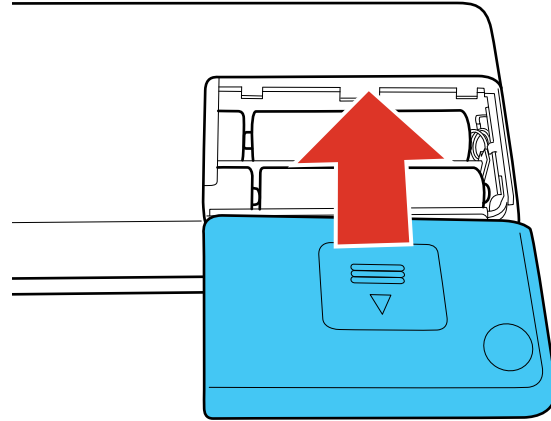
1. Slide off the battery cover.



2. Insert the batteries with the + and - ends facing as shown.



3. Slide the battery cover back on.



Parent topic: [Powering Your Scanner](#)

Related references

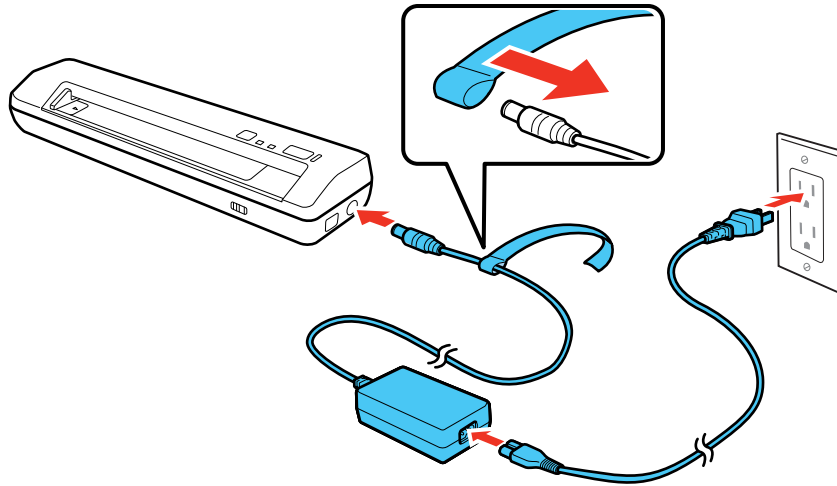
[Battery Safety Instructions](#)

Using the Optional AC Adapter

When scanning a large number of documents over a wireless connection, use the optional AC adapter (part number B12B867201) to avoid draining the batteries.

Note: The AC adapter does not recharge the batteries installed in the scanner.

Connect the AC adapter as shown below:





Caution: Use only the AC adapter model compatible with this product. Do not use the AC adapter with any other electronic device.

Parent topic: [Powering Your Scanner](#)

Changing the Power Off Setting

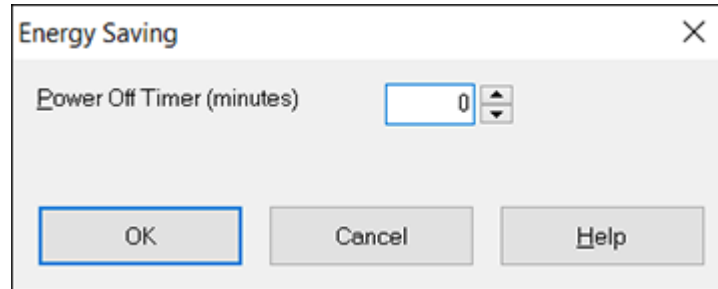
You can use the Epson Scan Settings utility to change the time period of inactivity before the scanner turns off automatically.

Note: The **Energy Saving** button is disabled when you connect to the scanner over a network. You can only modify the settings over a USB connection.

1. Use the provided USB cable to connect the scanner to your computer.
2. Do one of the following to access the Epson Scan Settings utility:
 - **Windows 10:** Click  and select **EPSON > EPSON Scan Settings**.
 - **Windows 8.x:** Navigate to the **Apps** screen and select **EPSON Scan Settings**.
 - **Windows (other versions):** Click  or **Start**, and select **All Programs** or **Programs**. Select **Epson**, then **EPSON Scan**, then click **EPSON Scan Settings**.

- **Mac:** Open the **Applications** folder, then open the **Epson Software** folder and double-click the **EPSON Scan Settings** icon.

3. Click **Energy Saving**.



4. Enter the time period of inactivity before the scanner turns off automatically as the **Power Off Timer** setting. If you enter a value of 0, the scanner will not turn off automatically.
5. Click **OK**.

Parent topic: [Scanner Basics](#)

Loading Originals

Follow the instructions here to load your originals into the scanner.

[Loading Originals in the Input Slot](#)

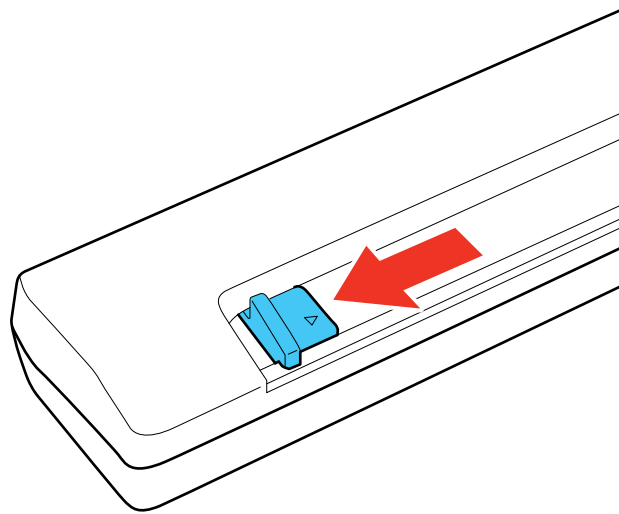
[Original Document Loading Capacity](#)

[Plastic Card Loading Capacity](#)

Loading Originals in the Input Slot

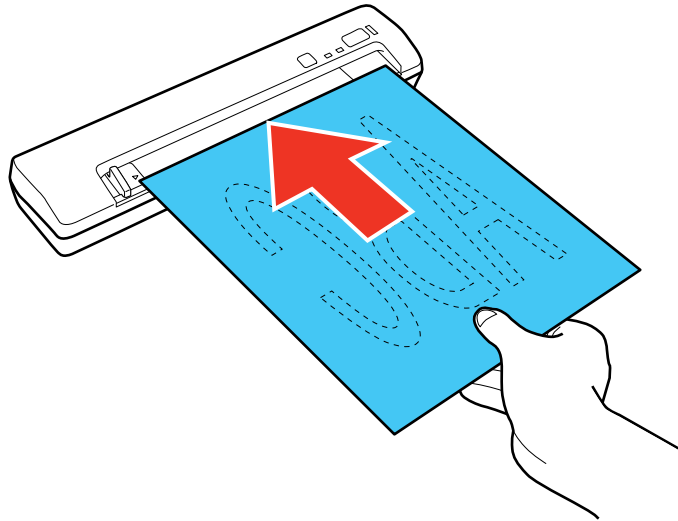
You can load an original that meets the document specifications in the input slot.

1. Slide the edge guide all the way out.

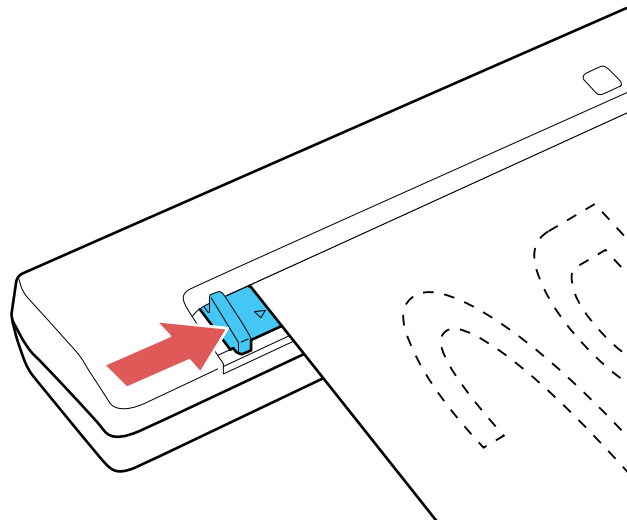


Caution: Do not load photos, or valuable original documents or artwork, directly into the scanner. This may wrinkle or damage the original.

2. Slide your original into the input slot against the right side as shown until it meets resistance. Make sure the printed side is face down and top edge first.



3. Slide the edge guide against the edge of the original.



Parent topic: [Loading Originals](#)

Related references

[Original Document Loading Capacity](#)

[Plastic Card Loading Capacity](#)

Original Document Loading Capacity

You can load an original document that meets the specifications in your scanner.

Paper type	Paper size	Paper weight or thickness	Loading capacity
Plain paper, fine paper, recycled paper	Letter (8.5 × 11 inches [216 × 279 mm])	9 to 72 lb (35 to 270 g/m ²)	1 sheet
	A4 (8.3 × 11.7 inches [210 × 297 mm])		
	Legal (8.5 × 14 inches [216 × 356 mm])		
	A5 (5.8 × 8.2 inches [148 × 210 mm])		
	A6 (4.1 × 5.8 inches [105 × 148 mm])		
	B5 (7.2 × 10.1 inches [182 × 257 mm])		
Paper envelopes	Envelopes (from 3.5 × 3.5 inches [90 × 90 mm] to 8.0 × 10.9 inches [205 × 277 mm])	Less than 0.014 inch (0.38 mm)	1 envelope

Note: The length of paper that can be scanned on Windows is 2.9 to 36.0 inches (73.7 to 914.4 mm). On a Mac, the maximum length is 16.5 inches (419 mm).

Caution: Do not load the following types of originals in the scanner, or they may be damaged or may damage the scanner:

- Folded paper
- Thermal paper
- Coated paper

- Originals with uneven surfaces, such as embossed documents
- Photos
- Originals with wet ink
- Ripped, curled, or wrinkled originals
- Originals containing staples or paper clips
- Originals with holes, other than standard hole-punched originals
- Originals that are bound
- Originals with carbon paper backing
- Transparencies
- Glossy originals
- Carbon-less paper
- Perforated originals
- Originals with labels or stickers
- Envelopes that are torn
- Envelopes with open flaps
- Envelopes with exposed sticky glue
- Envelopes sealed with sealing wax
- Envelopes with windows

Parent topic: [Loading Originals](#)

Plastic Card Loading Capacity

You can load an original plastic card that meets these specifications in your scanner.

Type	Plastic cards, including embossed cards (ISO7810 compliant)
Size	2.1 × 3.3 inches (56 × 85.6 mm)
Thickness	Up to 0.05 inch (1.24 mm) thick, including any embossing
Loading capacity	1 plastic card at a time

Note: Scanning may not work properly for plastic cards with shiny surfaces.

Parent topic: [Loading Originals](#)

Wi-Fi Networking

See these sections to use your scanner over a Wi-Fi network.

[Network Security Recommendations](#)

[Connection Mode Switch](#)

[Connecting to an Existing Wi-Fi Network](#)

[Direct Wi-Fi Mode Setup](#)

[Epson DocumentScan App for iOS/Android](#)

Network Security Recommendations

To help deter unauthorized access to your product over a network, you should protect your network environment using appropriate security measures.

Security measures such as these can help deter threats such as loss of user data, use of telephone and fax lines, and other intrusions:

- **Connect your product only to a network protected by a firewall**

Connecting your product directly to the Internet may leave it vulnerable to security threats. Instead, connect it to a router or other network connection protected by a firewall. Your router may already have a firewall set up by your Internet service provider; check with your ISP for confirmation. For best results, set up and use a private IP address for your network connection.

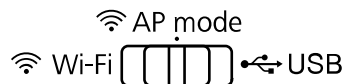
- **Change the default administrator password on your product**

If your product has an option to set an administrator password, change the default administrator password to deter access by unauthorized users to personal data stored on your product, such as IDs, passwords, and contact lists.

Parent topic: [Wi-Fi Networking](#)

Connection Mode Switch

The position of the connection mode switch determines which method you can use to connect the scanner to a wireless network or device, or to a computer.



Connection mode	Description
Wi-Fi	Connects to a Wi-Fi router (requires additional network setup steps, see link at end of topic)
AP mode	Creates a local Wi-Fi network that allows other devices to connect directly to the scanner
USB	Connects to a computer via a mini-USB cable

Parent topic: [Wi-Fi Networking](#)

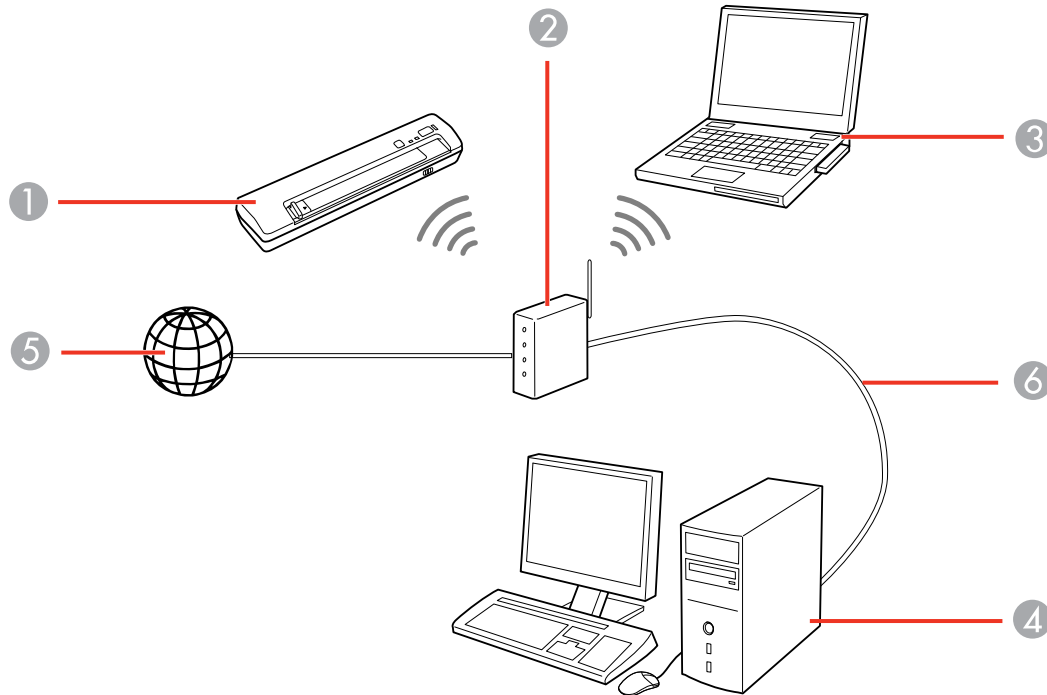
Related concepts

[Connecting to an Existing Wi-Fi Network](#)

[Direct Wi-Fi Mode Setup](#)

Connecting to an Existing Wi-Fi Network

You can set up your scanner to communicate with your computer using a wireless router. The wireless router can be connected to your computer over a wireless or wired network.



- 1 Epson scanner
- 2 Wireless router
- 3 Computer with a wireless interface
- 4 Computer
- 5 Internet
- 6 Ethernet cable (used only for wired connection to the wireless router)

[Manually Connecting to a Wi-Fi Network](#)
[Wi-Fi Protected Setup \(WPS\)](#)

Setting Up Network Scanning

Parent topic: [Wi-Fi Networking](#)

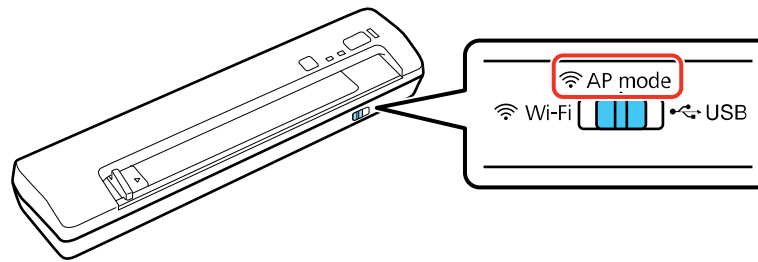
Manually Connecting to a Wi-Fi Network


You can use the EpsonNet Config utility to connect the scanner to a Wi-Fi network.

Note: You must have a computer with a wireless adapter to set up the connection.



Note: The scanner powers off after 5 minutes of inactivity. If the scanner turns off during the procedure, you may need to repeat some of these steps.

1. Make sure the scanner is turned off.
2. Set the connection mode switch on the scanner to the **AP mode** position.

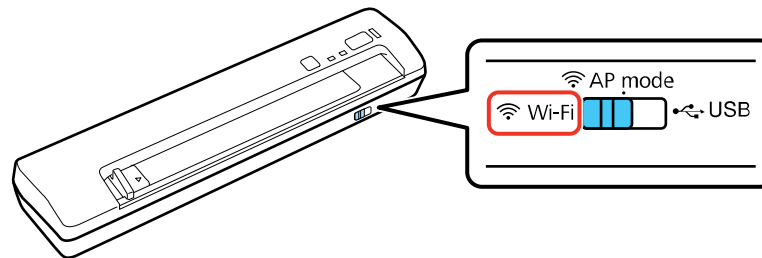


3. Turn on the scanner and wait for the ready and  Wi-Fi lights to stop flashing.
4. From your computer or device, open the list of wireless networks and select the SSID shown on the label on the bottom of the scanner.
5. Enter the password shown on the label on the bottom of the scanner.


When the ready and  Wi-Fi lights on the scanner stay on, the connection is established.

6. Do one of the following to start EpsonNet Config:
 - **Windows 10:** Click  > **EpsonNet** > **EpsonNet Config**.
 - **Windows 8.x:** Navigate to the **Apps** screen and select **EpsonNet Config**.
 - **Windows (other versions):** Click  or **Start**, and select **All Programs** or **Programs**. Select **EpsonNet** > **EpsonNet Config** > **EpsonNet Config**.

- **Mac:** Open the **Applications** folder, select **Epson Software > EpsonNet > EpsonNet Config > EpsonNet Config**.
7. Select your scanner from the list and click **Configuration**.
 8. Select **Network > Wi-Fi**.
 9. Select the following settings for your infrastructure connection:
 - **Communication mode:** Select **Infrastructure**.
 - **SSID:** Enter the SSID of the wireless router.
 - **Security level:** Select the wireless connection's security protocol.
 - **WEP Settings or WPA Settings:** Enter the wireless connection's security key.
 10. Click **Transmit**.
 11. Open the **Device** menu and select **Quit**.
 12. Turn off the scanner.
 13. Connect the computer or device to the wireless network.
 14. Set the connection mode switch on the scanner to the **Wi-Fi** position.



15. Turn on the scanner.

When the ready and  Wi-Fi lights on the scanner stay on, the scanner is connected to the network.
16. Select the link below to set up network scanning. You must set up network scanning to connect your computer and wireless scanner.

Parent topic: [Connecting to an Existing Wi-Fi Network](#)

Related tasks

[Setting Up Network Scanning](#)

Wi-Fi Protected Setup (WPS)

If your network uses a WPS-enabled wireless router, you can quickly connect your scanner to the network using Wi-Fi Protected Setup (WPS).

Note: To check if your router is WPS-enabled, look for a button labeled **WPS** on your router. If there is no hardware button, there may be a WPS setting in the software for the device. Check your network product documentation for details.

[Using WPS to Connect to a Network](#)

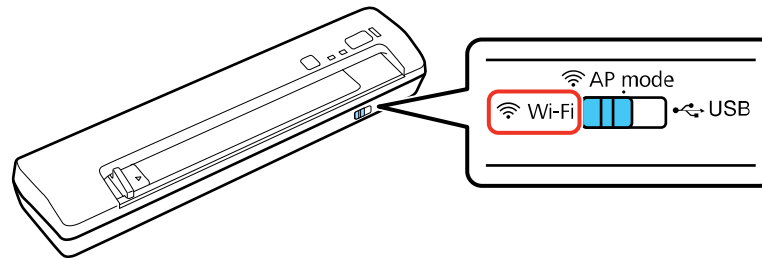
[Using WPS PIN Mode to Connect to a Network](#)

Parent topic: [Connecting to an Existing Wi-Fi Network](#)

Using WPS to Connect to a Network

If you have a WPS-enabled wireless router, you can use Wi-Fi Protected Setup (WPS) to connect your scanner to the network.


1. Make sure the scanner is turned off.
2. Set the connection mode switch on the scanner to the **Wi-Fi** position.

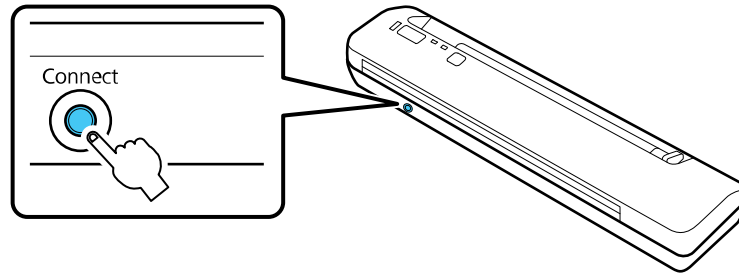


3. Enable WPS on your router by pressing the **WPS** button or enabling the WPS setting in your router firmware.


The router enters WPS discovery mode for 2 minutes.

4. Turn on the scanner.

5. Press and hold the **Connect** button on the scanner for at least 3 seconds, then release it when the ready and  Wi-Fi lights flash alternately.



Note: If you do not complete this step within 2 minutes, repeat steps 1 to 5.

When the ready and  Wi-Fi lights on the scanner stay on, the scanner is connected to the network.

6. Select the link below to set up network scanning. You must set up network scanning to connect your computer and wireless scanner.

Parent topic: [Wi-Fi Protected Setup \(WPS\)](#)

Related tasks

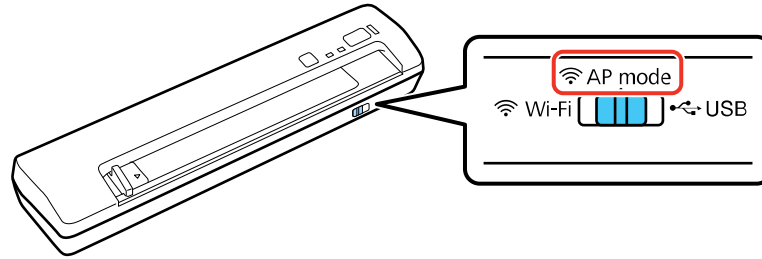
[Setting Up Network Scanning](#)

Using WPS PIN Mode to Connect to a Network

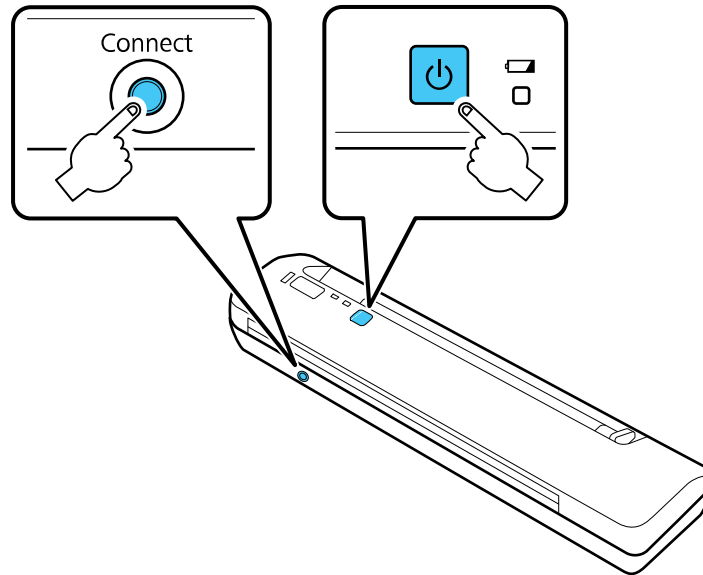
If you have a WPS-enabled wireless router that supports PIN mode, you can use Wi-Fi Protected Setup (WPS) PIN mode to connect your scanner to the network.

1. Find the WPS PIN number setting in your router's firmware.

2. Make sure the scanner is turned off and set the connection mode switch on the scanner to the **AP mode** position.




3. Press and hold the **Connect** button as you press the $\text{\textcircled{P}}$ power button to turn on the scanner. Release the **Connect** button when the ready and $\text{\textcircled{W}}$ Wi-Fi lights flash alternately.



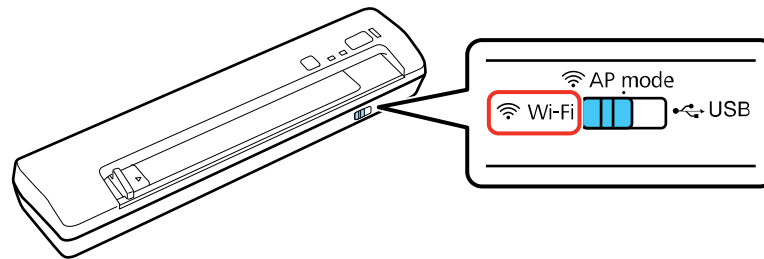
The scanner enters WPS discovery mode for two minutes.



4. Enter the PIN code **01234565** into the WPS PIN number setting in the router firmware within two minutes.

Note: If you do not enter the code within 2 minutes, repeat steps 1 to 4.

The ready and  Wi-Fi lights on the scanner stay on, indicating that the scanner is connected to the network.

5. Turn off the scanner.
6. Set the connection mode switch on the scanner to the **Wi-Fi** position.



7. Press the  power button to turn on the scanner.
When the ready and  Wi-Fi lights on the scanner stay on, the scanner is connected to the network.
8. Select the link below to set up network scanning. You must set up network scanning to connect your computer and wireless scanner.

Parent topic: [Wi-Fi Protected Setup \(WPS\)](#)

Related tasks



[Setting Up Network Scanning](#)

Setting Up Network Scanning

After manually configuring your scanner to connect to your network, you must set up the computer to connect to the scanner using the Epson Scan Settings utility. Your scanner must be turned on and connected to the network before you begin.

Note: The scanner powers off after 5 minutes of inactivity. If the scanner turns off during the procedure, you may need to repeat some of these steps.

Note: Make a note of the IP address or host name of the scanner so you can enter it in these steps.

1. Do one of the following to start Epson Scan Settings:
 - **Windows 10:** Click  > **EPSON** > **EPSON Scan Settings**.
 - **Windows 8.x:** Navigate to the **Apps** screen and select **EPSON Scan Settings**.
 - **Windows (other versions):** Click  or **Start** > **All Programs** or **Programs** > **EPSON** > **EPSON Scan** > **EPSON Scan Settings**.
 - **Mac:** Open the **Applications** folder, click **Epson Software**, and click **EPSON Scan Settings**.
2. Select your scanner from the Select Scanner list.
3. Select the **Network** setting and click **Add**.

You see a screen like this:

The screenshot shows a dialog box titled "Add". At the top, there is a "Scanner Name" label and a text input field containing "Scanner1". Below this is a section with a radio button selected, labeled "Search for addresses". Underneath is a large, empty rectangular area. Below that are two buttons: "Retry" and "Break". A status box below the buttons contains the text "Searching. Please wait.". Below the status box is another radio button labeled "Enter address", with the instruction "(Use this option when addresses do not appear above.)" below it. Underneath is an empty text input field. At the bottom of the dialog are three buttons: "OK", "Cancel", and "Help".

4. Do one of the following:
 - Under **Search for addresses**, select the IP address of your scanner, and click **OK**.
 - Select the **Enter address** setting, type in the IP address or host name of your scanner, and click **OK**.
5. Click the **Test** button to check the connection.
You see a confirmation message.



6. Click **OK** to save your settings and close Epson Scan Settings.

[Determining the Scanner's IP Address](#)

Parent topic: [Connecting to an Existing Wi-Fi Network](#)

Determining the Scanner's IP Address

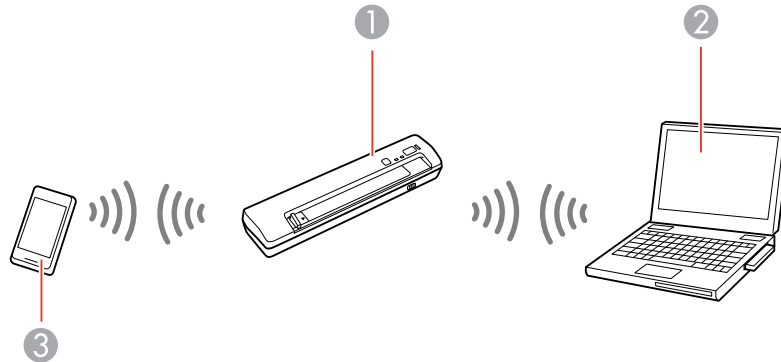
If you have multiple scanners on your network, you need to know the IP address of the scanner when setting up network scanning.

1. Do one of the following to start EpsonNet Config:
 - **Windows 10:** Click  > **EpsonNet** > **EpsonNet Config**.
 - **Windows 8.x:** Navigate to the **Apps** screen and select **EpsonNet Config**.
 - **Windows (other versions):** Click  or **Start**, and select **All Programs** or **Programs**. Select **EpsonNet** > **EpsonNet Config** > **EpsonNet Config**.
 - **Mac:** Open the **Applications** folder and select **Epson Software** > **EpsonNet** > **EpsonNet Config** > **EpsonNet Config**.
2. Locate your scanner in the list and write down the IP address.

Parent topic: [Setting Up Network Scanning](#)

Direct Wi-Fi Mode Setup

You can set up your scanner to communicate directly with your computer or another device without requiring a wireless router. If your product is not already connected to a wireless network, it enters access point mode and the scanner itself acts as the network access point for up to 4 devices.



- 1 Epson scanner
- 2 Computer with a wireless interface
- 3 Other wireless device

[Enabling a Direct Wi-Fi Connection](#)

[Using WPS to Set Up a Direct Wi-Fi Connection](#)

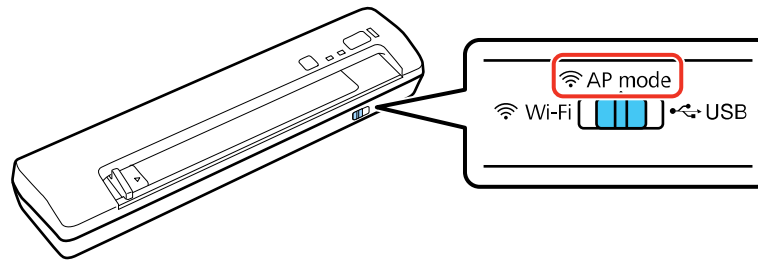
Parent topic: [Wi-Fi Networking](#)


Enabling a Direct Wi-Fi Connection

You can enable a direct Wi-Fi connection to allow direct communication between your scanner and computer or other devices without a wireless router.

Note: While you are connected to the scanner, your computer cannot access the internet.

1. Make sure the scanner is turned off.
2. Set the connection mode switch on the scanner to the **AP mode** position.



3. Turn on the scanner.
4. Wait for the ready and  Wi-Fi lights to stop flashing.
5. From your computer or device, search for and select the SSID shown on the label on the bottom of the scanner.
6. Enter the password shown on the label on the bottom of the scanner.

The computer connects to the scanner's wireless network. If the connection is unsuccessful, make sure you entered the password correctly.

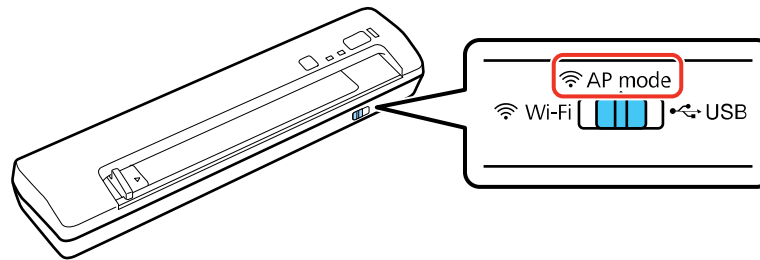
Parent topic: [Direct Wi-Fi Mode Setup](#)

Using WPS to Set Up a Direct Wi-Fi Connection

You can use Wi-Fi Protected Setup (WPS) to create a direct Wi-Fi connection to a WPS-enabled computer or device.


Note: While you are connected to the scanner, your computer cannot access the internet.

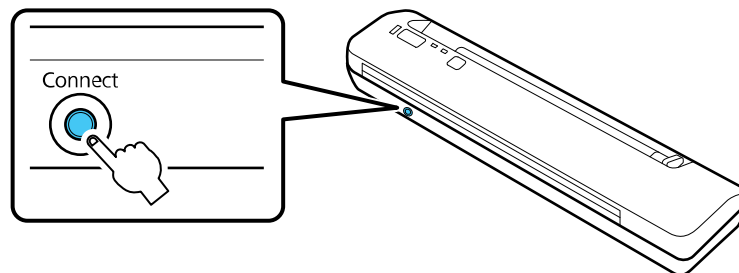
1. Make sure the scanner is turned off.
2. Set the connection mode switch on the scanner to the **AP mode** position.




3. Enable WPS on your router by pressing the **WPS** button or enabling the WPS setting in your router firmware.

The router enters WPS discovery mode for 2 minutes.

4. Turn on the scanner.
5. Press and hold the **Connect** button for at least 3 seconds until the ready and  Wi-Fi lights flash alternately.



When the ready and  Wi-Fi lights on the scanner stay on, the connection is established.

Note: If you do not complete this step within 2 minutes, start the procedure again.

Parent topic: [Direct Wi-Fi Mode Setup](#)

Epson DocumentScan App for iOS/Android

You can use the Epson DocumentScan app to scan from a network scanner to an iOS or Android device over a direct Wi-Fi connection.

For more information about Epson DocumentScan, search for the app on the App Store (iOS) or Google Play (Android).

Parent topic: [Wi-Fi Networking](#)

Scanning

You can scan your originals and save them as digital files.

[Starting a Scan from a Scanner Button](#)

[Scanning with Document Capture Pro or Document Capture](#)

[Scanning with Epson Scan](#)

[Starting a Scan from a Scanning Program](#)


[Scanning Special Projects](#)

Starting a Scan from a Scanner Button


You can scan using a button on your scanner. This automatically starts the scanning program you have assigned to the button.

Your product automatically selects suitable default scan settings, but you can view or change them as necessary.

Note: Document Capture Pro (Windows) and Document Capture (Mac) do not support scanning from the scanner button over a wireless network. Launch Epson Scan before scanning from the scanner button.

1. Make sure you installed the scanner software and connected the scanner to your computer or network.
2. Load an original in your scanner.
3. Press the  start button.


The image is scanned and saved to the folder you have specified.


Note: If your product is connected via USB, you can use Document Capture Pro (Windows) or Document Capture (Mac) to change the default scan settings when you scan using the  start button.

[Assigning Start Button Settings or Scan Jobs](#)



Parent topic: [Scanning](#)

Assigning Start Button Settings or Scan Jobs

You can view or change the default scan settings when you scan using the  start button. You do this using the Document Capture Pro (Windows) or Document Capture (Mac) program.

1. Start Document Capture Pro or Document Capture on a computer connected to the scanner.
2. Click the  Manage Job icon from the toolbar at the top of the window.
3. On the Job Management window, click **Add** or the **+** icon.
4. Enter a name for the new job, then select the settings you want to view or change and change the settings as necessary, and click **OK**.

Note: See the Help information in Document Capture Pro or Document Capture for details.



5. Do one of the following:
 - **Windows:** On the Job Management window, click **Event Settings**.
 - **Mac:** Click the  icon at the bottom of the window, then click **Event Settings**.
6. Select the job that you want to assign to the  start button from the pull-down menu.
7. Click **OK**.

Parent topic: [Starting a Scan from a Scanner Button](#)

Scanning with Document Capture Pro or Document Capture

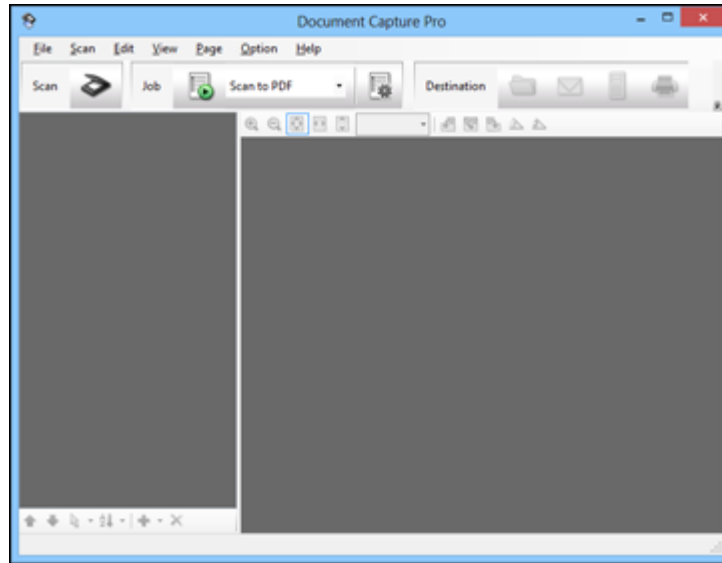
When you scan with Document Capture Pro (Windows) or Document Capture (Mac), the program automatically saves your scanned file on your computer in the folder you specify. You can select settings, preview, and change the scanned file settings as necessary.

Note: The settings may vary, depending on the software version you are using. See the Help information in Document Capture or Document Capture Pro for details.

1. Do one of the following to start Document Capture Pro (Windows) or Document Capture (Mac):
 - **Windows 10:** Click  and select **Epson Software > Document Capture Pro**.
 - **Windows 8.x:** Navigate to the **Apps** screen and select **Document Capture Pro**.
 - **Windows (other versions):** Click  or **Start**, and select **All Programs** or **Programs**. Select **Epson Software > Document Capture Pro**.

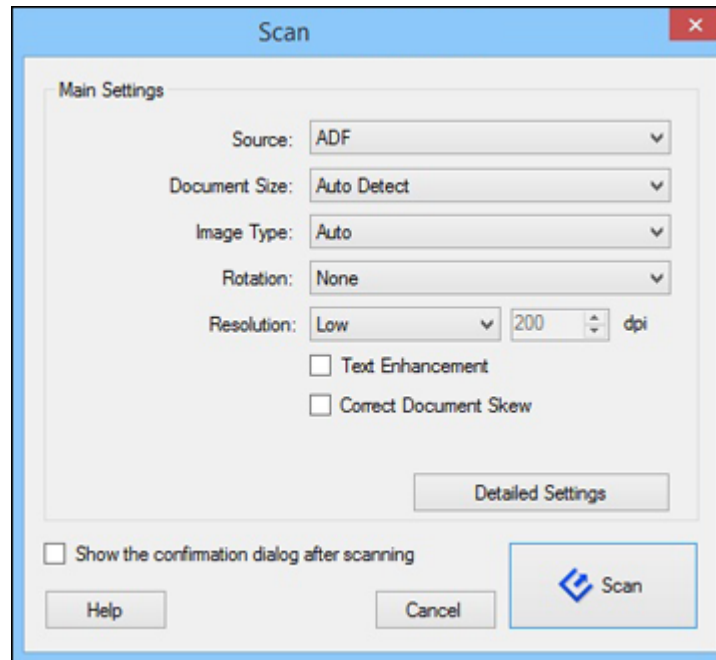
- **Mac:** Open the **Applications** folder, open the **Epson Software** folder, and select **Document Capture**.
2. Select **Switch to Standard View**, if necessary.


You see a window like this:



3. Click the  **Scan** icon.


You see a window like this:



Note: If you want to use a scan job that you created instead, select it from the Job list in the Document Capture Pro or Document Capture window, click the  Start Job button, and skip the rest of these steps.


4. Select any displayed scan settings you want to use.

Note: See the Help information in Document Capture Pro or Document Capture for details.

5. If you want to select detailed scan settings, do one of the following:
 - **Windows:** Click **Detailed Settings**. Select any displayed scan settings you want to use and click **OK**.
 - **Mac:** Close the Scan window. Open the **Scan** menu at the top of the screen and select **Displays the EPSON Scan Setup Screen**. Click the  Scan icon. Select any displayed scan settings you want to use and click **OK**.

6. Click **Scan**.

You see a preview of your scan in the Document Capture Pro (Windows) or Document Capture (Mac) window.

7. If you would like to scan additional originals and add them to the current captured images, click the  Add Page button and repeat steps 2 through 5.

8. Check the scanned images and edit them as necessary.

9. Click one of the Destination icons to choose where to send your scanned files. (If you cannot see all of the icons below, click the arrow next to the icons.)



10. Depending on the destination you chose, click **OK** or **Send** to complete the operation.

Parent topic: [Scanning](#)



Related tasks

[Scanning to a SharePoint Server or Cloud Service](#)

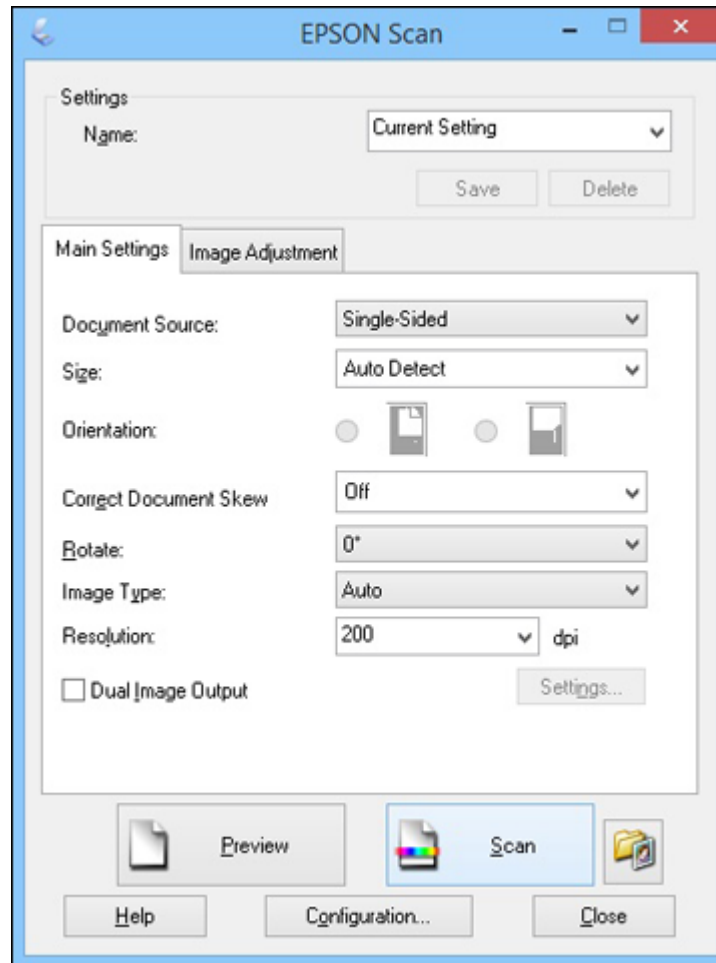
Scanning with Epson Scan

Epson Scan automatically saves your scanned file on your computer in the format and folder you specify. You can select settings, preview, and change the scanned file settings as necessary.

1. Do one of the following to start Epson Scan:

- **Windows 10:** Click  and select **EPSON > Epson Scan**.
- **Windows 8.x:** Navigate to the **Apps** screen and select **EPSON Scan** under **EPSON** or **EPSON Software**.
- **Windows (other versions):** Click  or **Start**, and select **All Programs** or **Programs**. Select **EPSON** or **EPSON Software** and click **EPSON Scan**.
- **Mac:** Open the **Applications** folder, open the **Epson Software** folder, and double-click the **EPSON Scan** icon.

You see a window like this:



2. Select options for each of the scan settings on the screen.
3. If necessary, click the **Preview** button.

Epson Scan previews your original and displays the result in a separate Preview window. The scanner also ejects the page.

4. Reload the page in the scanner.

5. Click the **Image Adjustment** tab and select any of the image adjustment settings you want to use. Before making adjustments, click the image or scan area in the Preview window.

6. Click **Scan**.

You see the File Save Settings window.

7. Change any of the necessary file save settings and click **OK**.

Epson Scan scans your original, and saves the file in the selected folder or opens it in your scanning program. If the file was saved directly to your computer, you see the file in the Windows Explorer or Mac Finder, where you can view and print the image, if desired.

[Available Image Adjustments](#)

Parent topic: [Scanning](#)

Available Image Adjustments

You can select these options from the Image Adjustments tab in Epson Scan.

Note: Not all adjustment settings may be available, depending on the Image Type setting.

Select the **Image Option** checkbox to access additional settings.

Unsharp Mask

Makes the edges of certain image areas clearer. Turn off this option to leave softer edges.

Descreening

Removes the ripple pattern that might appear in subtly shaded image areas, such as skin tones. This option improves results when scanning magazines or newspapers. (The results of descreening do not appear in the preview image, only in your scanned image.)

Text Enhancement

Sharpens the appearance of letters in text documents.

Auto Area Segmentation

Makes grayscale images clearer and text recognition more accurate by separating the text from the graphics.

Dropout

The scan will not pick up the color you select. This setting is only available if you select an Image Type of Grayscale or Black & White.

Color Enhance

Enhances the red, green, or blue shades in the scanned image.

Edge Fill

Corrects shadowing around the edges of the image by filling the shadows with the color you select.

Brightness

Adjusts the overall lightness and darkness of the scanned image.

Contrast

Adjusts the difference between the light and dark areas of the overall scanned image.

Threshold

Adjusts the level at which black areas in text and line art are delineated, improving text recognition in OCR (Optical Character Recognition) programs.

Parent topic: [Scanning with Epson Scan](#)

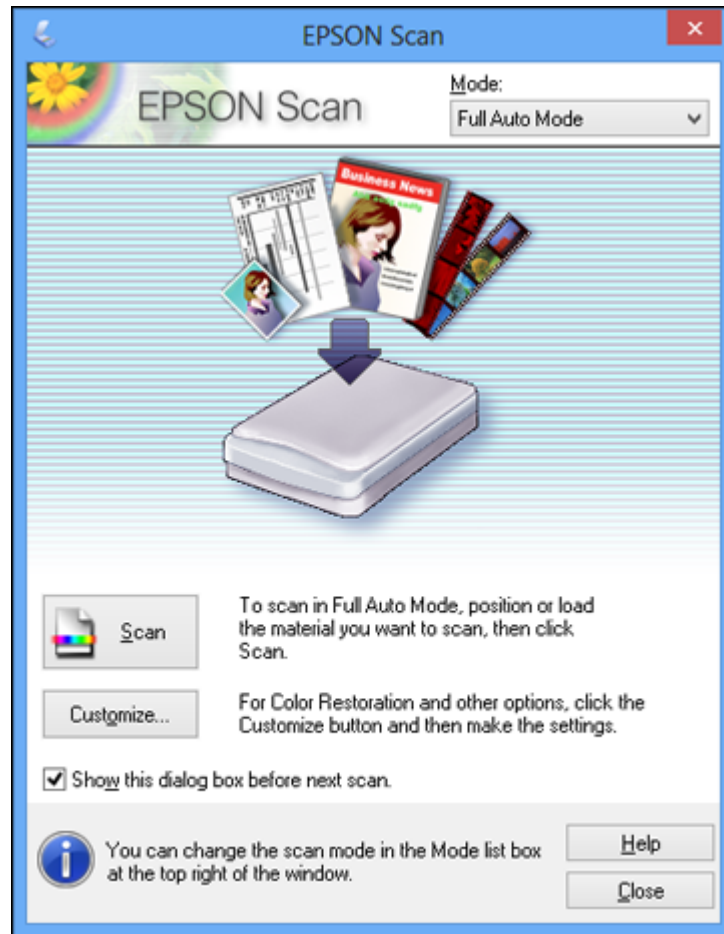
Starting a Scan from a Scanning Program

You can start Epson Scan from a TWAIN-compliant scanning program to select scan settings, scan, and open the scanned image in the program.

1. Open your scanning program and select its scanning option. (See your scanning program help for instructions.)
2. Select your product.

Note: In certain programs, you may need to select your product as the "source" first. If you see a **Select Source** option, choose it and select your product. With Windows, do not select a **WIA** option for your product; it will not work correctly.

You see an Epson Scan window like this:



Note: In certain programs, you may see the program's scan window instead of the Epson Scan window. Select scanning options as necessary.

Parent topic: [Scanning](#)

Scanning Special Projects

Your product's scanning software offers various options to help you quickly complete special scan projects.

[Convert Scanned Documents to Editable Text \(OCR\)](#)

[Scanning to a SharePoint Server or Cloud Service](#)

Parent topic: [Scanning](#)

Convert Scanned Documents to Editable Text (OCR)

You can scan a document and convert the text into data that you can edit with a word processing, spreadsheet, or HTML-editing program. This process is called OCR (Optical Character Recognition).

To scan and use OCR, you need to install an OCR program, such as ABBYY FineReader.


[Scanning Using OCR - Windows](#)

[Scanning Using OCR - Mac](#)

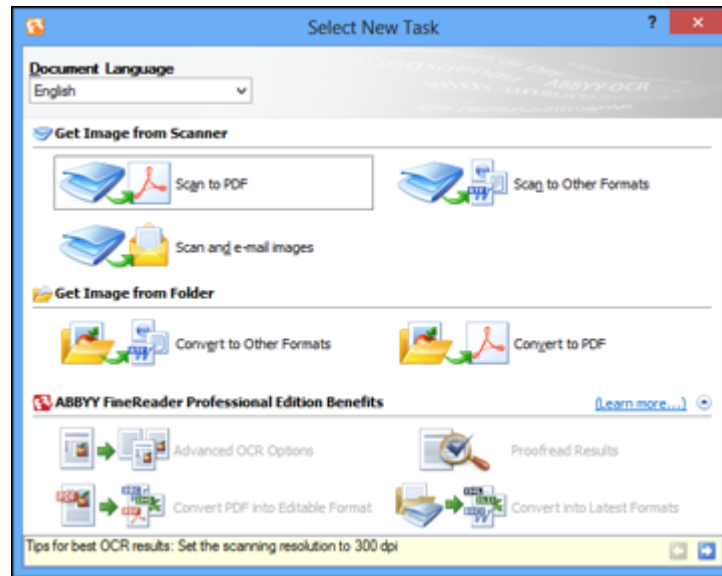
Parent topic: [Scanning Special Projects](#)

Scanning Using OCR - Windows

You can use the ABBYY FineReader OCR program to convert scanned documents to editable text.

1. Load your original in the scanner.
2. Do one of the following to open ABBYY FineReader:
 - **Windows 8.x:** Navigate to the **Apps** screen and select **ABBYY FineReader 9.0 Sprint**.
 - **Windows (other versions):** Click  or **Start**, and select **All Programs** or **Programs**. Select **ABBYY FineReader 9.0 Sprint > ABBYY FineReader 9.0 Sprint**.

You see a window like this:



3. Select the language used in the document you are going to scan as the **Document Language** setting.
4. Click the icon that corresponds with the program or format you want to scan to.
5. If you see the Select Scanner window, select your product and click **OK**.

Note: Do not select a **WIA** option for your product; it will not work correctly.

You see the scan settings window.

6. Select your scan settings.
7. Click **Preview** and adjust the area you want to scan, if necessary.
8. Click **Scan**.

Note: To scan a multi-page document, select settings in the Multi-Page Scanning section and click **Scan** for each page.

9. When you are finished scanning, click **Close**.

Your document is scanned and processed into editable text, then you see the Save As window.

10. Select a name and a file format for your document and click **Save**.

The file is saved and then opened in an application associated with the file type you selected, if available on your system.

Parent topic: [Convert Scanned Documents to Editable Text \(OCR\)](#)

Related tasks

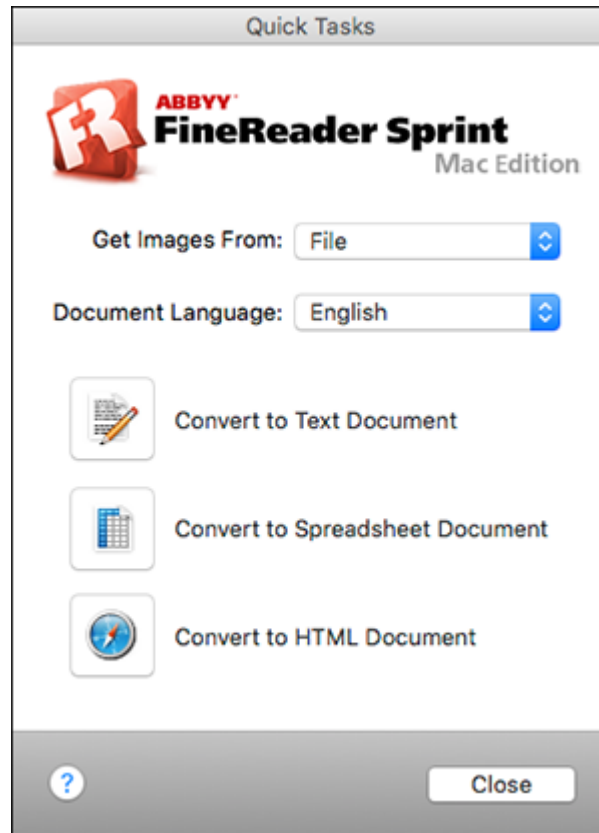
[Scanning with Epson Scan](#)

Scanning Using OCR - Mac

You can use the ABBYY FineReader OCR program to convert scanned documents to editable text.

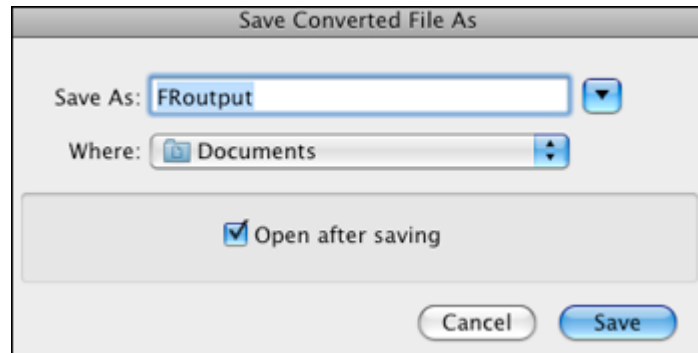
1. Load your original in the scanner.
2. Open the **Applications** folder and click the **ABBYY FineReader Sprint** icon.

You see a window like this:



3. Open the **Get Images From** pop-up menu and select your product.
4. Select the language used in the document you are going to scan as the **Document Language** setting.
5. Select the type of document you are going to scan.
Epson Scan starts in the last scan mode you used.
6. Select your scan settings and click **Scan**.
Your document is scanned and you see the Epson Scan window while your document is converted to editable text.

7. Click **Close** to close the Epson Scan window and Preview window, if necessary.
You see the Save Converted File As window:



8. Click the **Save** button.

The file is saved and then opened in an application associated with the file type you selected, if available on your system.



Parent topic: [Convert Scanned Documents to Editable Text \(OCR\)](#)

Related tasks

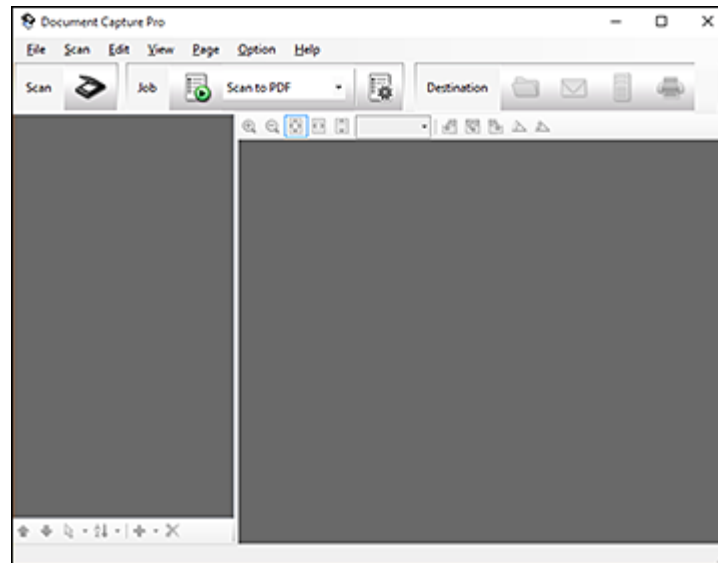
[Scanning with Epson Scan](#)


Scanning to a SharePoint Server or Cloud Service

You can use Document Capture Pro (Windows) or Document Capture (Mac) to upload scanned images to a SharePoint server or a cloud service.

1. Do one of the following to start Document Capture Pro (Windows) or Document Capture (Mac):
 - **Windows 10:** Click  and select **Epson Software > Document Capture Pro**.
 - **Windows 8.x:** Navigate to the **Apps** screen and select **Document Capture Pro**.
 - **Windows (other versions):** Click  or **Start**, and select **All Programs** or **Programs**. Select **Epson Software > Document Capture Pro**.
 - **Mac:** Open the **Applications** folder, open the **Epson Software** folder, and select **Document Capture**.




You see a window like this:






2. Click the  **Scan** icon.
3. Select any displayed scan settings you want to use.

Note: See the Help information in Document Capture Pro or Document Capture for details.

4. Click **Scan**.
You see a preview of your scan in the Document Capture Pro or Document Capture window.
5. Click one of the cloud service Destination icons to choose where to save your scanned file. (If you cannot see all of the icons below, the service software may not be installed, the service may not be available on your platform, or you need to click the arrow next to the icons.)

-  Web Folder (WebDAV)
-  Microsoft SharePoint server (Windows only)
-  Evernote (Windows only)

-  Microsoft OneNote (Windows only)
-  Google Drive
-  SugarSync

You see the Transfer Settings window.

6. Enter any required information to set up the destination. If you have previously created a saved setting for the destination, select it from the drop-down list.
7. Adjust any save settings, then click **OK** or **Send**, depending on the destination.
Your originals are scanned and uploaded to the indicated server.

Parent topic: [Scanning Special Projects](#)

Related tasks

[Scanning with Document Capture Pro or Document Capture](#)

Cleaning and Transporting Your Scanner

See these sections if you need to clean or transport your scanner.

[Cleaning Your Scanner](#)

[Cleaning Inside Your Scanner](#)

[Replacing Batteries](#)

[Calibrating Your Scanner](#)

[Transporting Your Scanner](#)

Cleaning Your Scanner

To keep your product working at its best, you should clean it several times a year.

Caution: Do not use a hard brush, alcohol, or paint thinner to clean the product or you may damage it. Do not use oil or other lubricants inside the product or let water get inside it. Do not open the product's outer case.

1. Turn off the scanner and unplug the optional AC adapter.
2. Disconnect any connected cables.
3. Clean the outer case with a soft, dry cloth. Do not use liquid or chemical cleansers.

Note: If the outer case still requires additional cleaning, use a slightly damp cloth to wipe the outer case. Then wipe the case with a soft, dry cloth.

Parent topic: [Cleaning and Transporting Your Scanner](#)

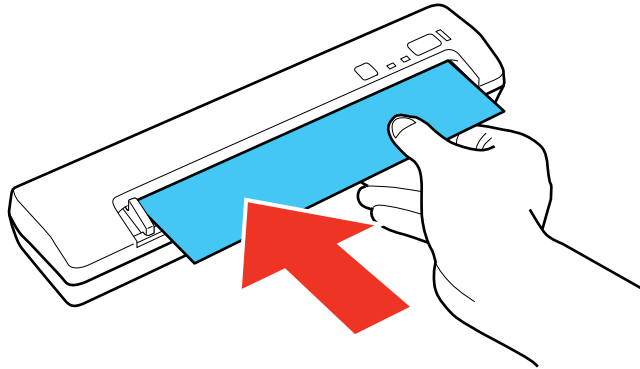
Cleaning Inside Your Scanner


Clean your scanner regularly using the wet and dry cleaning sheets that came with your scanner. Dust on the scanning surface can cause spots or lines in your scanned images.

Caution: Use the wet and dry cleaning sheets to clean your scanner. Do not use a hard brush, alcohol, or paint thinner to clean the product or you may damage it. Do not use oil or other lubricants inside the product or let water get inside it.

You can purchase genuine Epson accessories at epson.com (U.S. sales), epson.ca (Canadian sales), or epson.com.jm (Caribbean sales). You can also purchase accessories from an Epson authorized reseller. To find the nearest one, call 800-GO-EPSON (800-463-7766) in the U.S. or 800-807-7766 in Canada.

1. Turn on the scanner and make sure it is connected to the computer.
2. Load the dry cleaning sheet into the scanner.



3. Do one of the following to start Epson Scan Settings:
 - **Windows 8.x:** Navigate to the **Apps** screen and select **EPSON Scan Settings**.
 - **Windows (other versions):** Click  or **Start > All Programs** or **Programs > EPSON > EPSON Scan > EPSON Scan Settings**.
 - **Mac:** Open the **Applications** folder, click **Epson Software**, and click **EPSON Scan Settings**.
4. Click **Maintenance**.
5. Click **Cleaning**. Cleaning takes about 30 seconds.
The scanner feeds and ejects the cleaning sheet.
6. If the scanner is not clean, repeat these steps to clean it again.

Note: You can use the same dry cleaning sheet multiple times.

7. If the scanner is not clean after multiple cleanings with the dry cleaning sheet, repeat these steps using the wet cleaning sheet.


Note: You can use the wet cleaning sheet only once.

Parent topic: [Cleaning and Transporting Your Scanner](#)

Related references

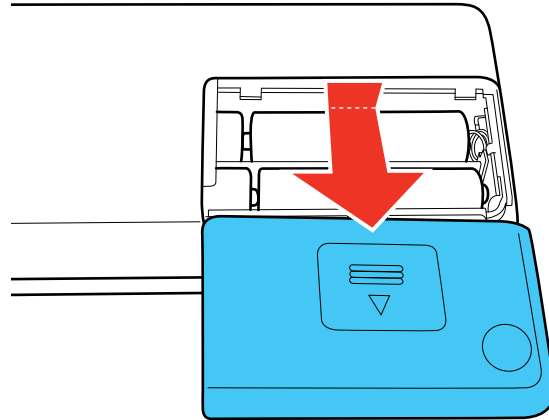
[Optional and User Replaceable Epson Scanner Parts](#)

Replacing Batteries

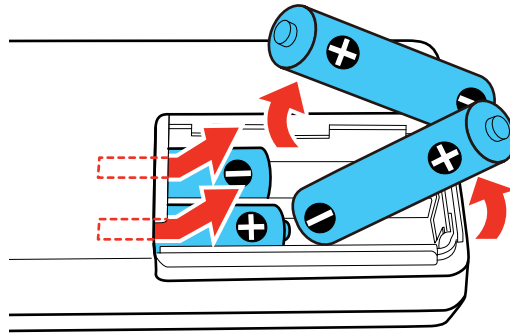
When the  low battery light is on, you need to replace the batteries. You can use 4 AA batteries (Ni-MH, alkaline, or lithium) to power your scanner.

Caution: Use only the type of batteries specified in this manual. Do not install batteries of different types, or mix new and old batteries.

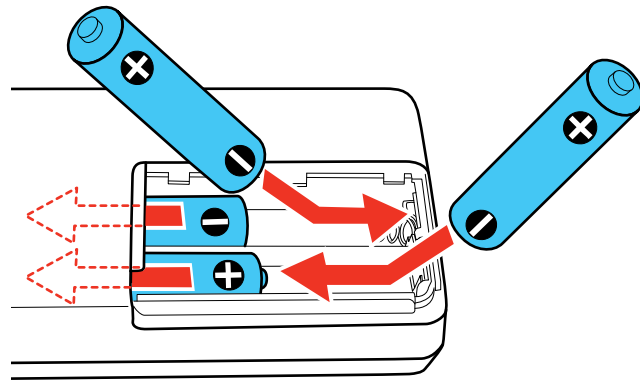
1. Slide off the battery cover.



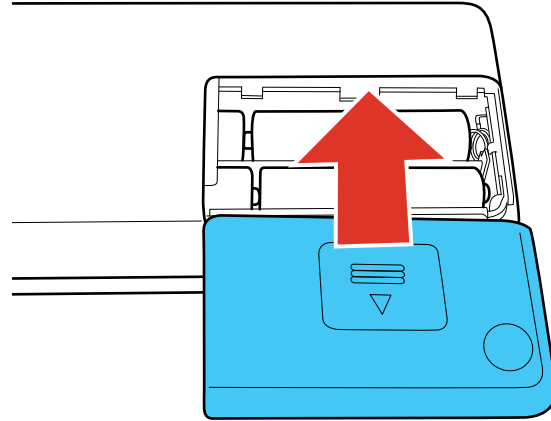
2. Remove the old batteries and recycle them appropriately.



3. Insert the batteries with the + and - ends facing as shown.



4. Slide the battery cover back on.



Parent topic: [Cleaning and Transporting Your Scanner](#)

Related references

[Battery Safety Instructions](#)

Calibrating Your Scanner

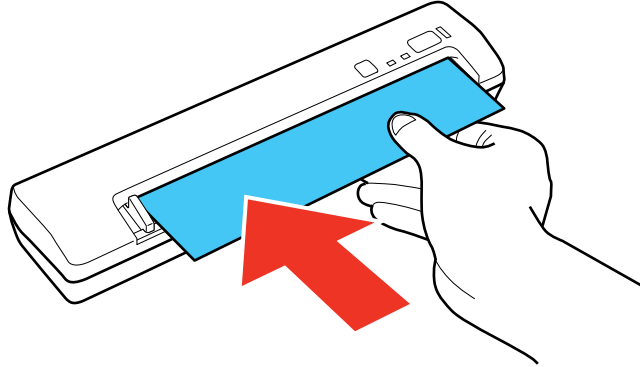
If you notice any of the following image quality problems, you can calibrate the scanner using the calibration sheet that came with it.


- Scanned images are blurry
- Scanned colors differ from the colors in the original.
- Scanned image are darker or lighter than the original.
- Scanned images contain vertical lines.

Note: You can use the calibration sheet multiple times. If calibrating the scanner does not improve the image quality, contact Epson for support. Make sure the scanner batteries are not low or calibration will not start.

1. Turn on the scanner and make sure it is connected to the computer.

2. Load the calibration sheet into the scanner.



3. Do one of the following to start Epson Scan Settings:
 - **Windows 8.x:** Navigate to the **Apps** screen and select **EPSON Scan Settings**.
 - **Windows (other versions):** Click  or **Start > All Programs** or **Programs > EPSON > EPSON Scan > EPSON Scan Settings**.
 - **Mac:** Open the **Applications** folder, click **Epson Software**, and click **EPSON Scan Settings**.
4. Click **Maintenance**.
5. Click **Calibration**.

The scanner feeds the calibration sheet, calibrates the scanner for about one minute, and then ejects the sheet.

Parent topic: [Cleaning and Transporting Your Scanner](#)

Related references

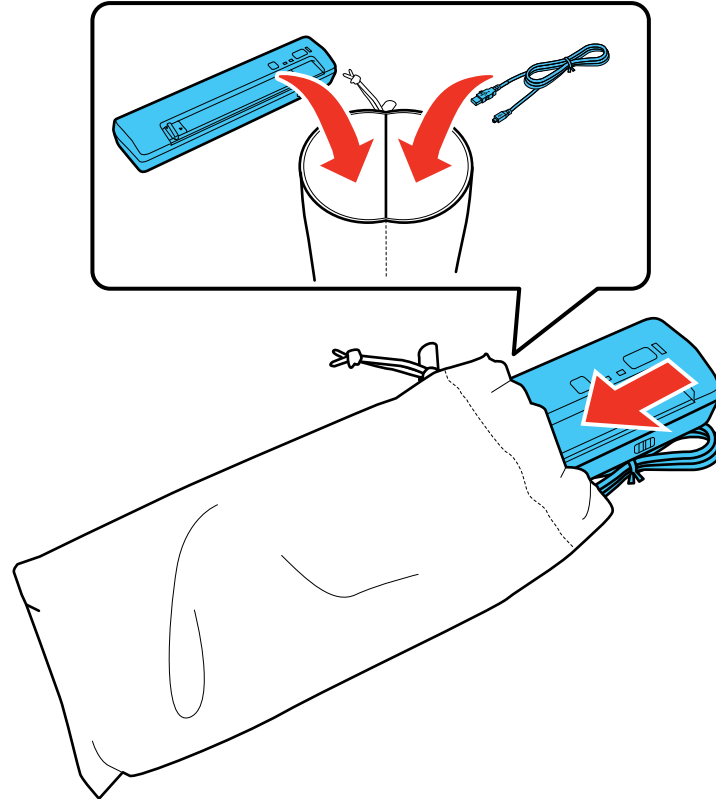
[Optional and User Replaceable Epson Scanner Parts](#)

Transporting Your Scanner

You can transport your scanner in the pouch that came with it.

1. Turn off the scanner and unplug the optional AC adapter.
2. Disconnect any connected cables.

3. Place the scanner and USB cable in the provided pouch.



Parent topic: [Cleaning and Transporting Your Scanner](#)

Solving Problems

Check these sections for solutions to problems you may have using your product.

[Scanner Light Status](#)

[Solving Scanning Problems](#)

[Solving Network Scanning Problems](#)

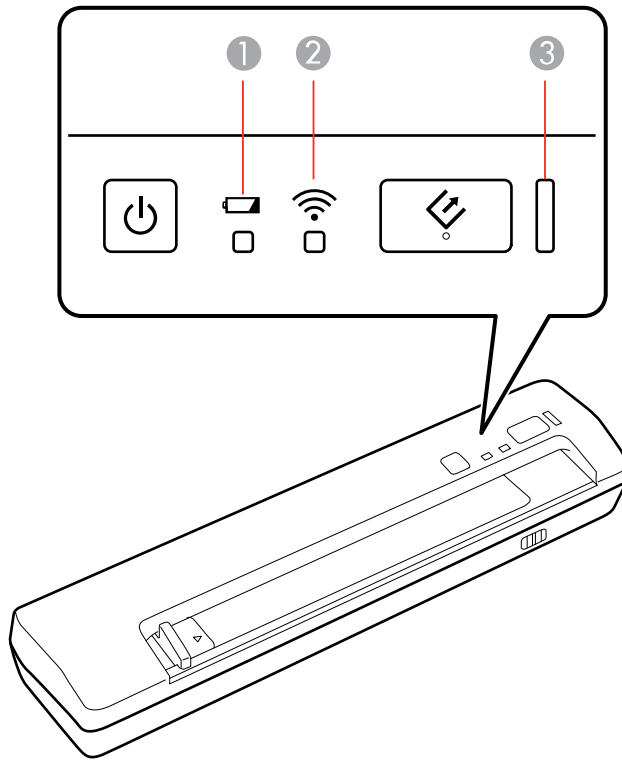
[Solving Scanned Image Quality Problems](#)



[Uninstall Your Scanner Software](#)

[Where to Get Help](#)



Scanner Light Status

You can often diagnose problems with your scanner by checking its lights.


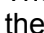






1	The  low battery light
2	The  Wi-Fi light
3	The ready light

USB connection

Light status	Condition/solution
The ready light is on	The scanner is turned on and ready to scan.
The ready light is flashing	The scanner is scanning or initializing. Wait for the ready light to stop flashing before turning off the scanner.
	The scanner is calibrating or feeding a cleaning sheet.
The ready light and the  Wi-Fi light are flashing alternately	The scanner firmware is updating. Do not turn off the scanner or disconnect any cables until the status lights have stopped flashing.
The ready light and the  Wi-Fi light are flashing at the same time	A paper is jammed. Reload the original. If the lights continue to flash, a scanner error may have occurred. Turn the scanner off and then back on again. If the error continues, contact Epson for support.

Wireless connection

Light status	Condition/solution
The ready light is on	The scanner is turned on and ready to scan.
The ready light is flashing	The scanner is scanning or initializing. Wait for the ready light to stop flashing before turning off the scanner.
	The scanner is calibrating or feeding a cleaning sheet.
The ready light is on and the  Wi-Fi light is flashing	A WPS or AirStation One-Touch Secure System (AOSS) error has occurred. Retry the connection.
The ready light is flashing and the  Wi-Fi light is on	The product is scanning or connecting to a wireless network.

Light status	Condition/solution
The ready light and the  Wi-Fi light are flashing alternately	The scanner firmware is updating. Do not turn off the scanner or disconnect any cables until the status lights have stopped flashing.
	The product is in a standby state for a Wi-Fi Protected Setup (WPS) connection.
The ready light and the  Wi-Fi light are flashing at the same time	A paper is jammed. Reload the original. If the lights continue to flash, a scanner error may have occurred. Turn the scanner off and then back on again. If the error continues, contact Epson for support.
The  Wi-Fi light is flashing	An AOSS error has occurred. Retry the connection.
The  low battery light is on	The batteries are running low. Make sure you have replacement batteries available.

Parent topic: [Solving Problems](#)

Solving Scanning Problems

Check these solutions if you have problems scanning with your product.

[Scanner Does Not Turn On or Turns Off Unexpectedly](#)

[Scanner Button Does Not Work as Expected](#)

[Scanning Software Does Not Operate Correctly](#)

[Cannot Start Epson Scan](#)

[Original Feeds Incorrectly in Scanner](#)

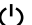
[Original Jams in Scanner](#)

[Scanning is Slow](#)

Parent topic: [Solving Problems](#)

Scanner Does Not Turn On or Turns Off Unexpectedly

If the scanner does not turn on or if it turns off unexpectedly, try these solutions:

- Make sure the optional AC adapter is securely connected to the scanner and to a working electrical outlet.
- If the scanner turns off unexpectedly, you may need to adjust the **Energy Saving > Power Off Timer** setting in Epson Scan Settings. The scanner must be connected via USB to change this setting.
- Try pressing the  power button for approximately one second.

- If you are using a USB connection, make sure the connection mode switch is set to **USB**.
- If you are using a wireless connection, make sure that charged batteries are installed or the optional AC adapter is connected.

Parent topic: [Solving Scanning Problems](#)

Related references

[Scanner Buttons and Lights](#)

Related tasks

[Installing Batteries](#)

[Using the Optional AC Adapter](#)

[Changing the Power Off Setting](#)

[Replacing Batteries](#)

Scanner Button Does Not Work as Expected

If the scanner button does not start the correct program or perform the correct action, try these solutions:

- Document Capture Pro (Windows) and Document Capture (Mac) do not support using the button to scan over a wireless connection. Connect the scanner using a USB cable.
- On Windows, be sure that the scanner is listed under **Imaging Devices** in the Device Manager.
- Make sure Document Capture Pro (Windows) or Document Capture (Mac) is installed correctly. If necessary, uninstall and reinstall it.
- Make sure you have assigned the correct job to the scanner button and change it, if necessary.
- If you selected **Keep Blocking** in a Windows Security Alert window during or after installation of Document Capture Pro, unblock the EEventManager Application program in the Windows security settings; see Windows help for details.
- Check the status of the lights and make sure the scanner is ready to scan.
- Make sure the connection mode switch is set correctly (ES-300W).
- When using a wireless connection, start Epson Scan on your computer before scanning from the product.
- On a Mac, make sure you are logged in as the user who installed the scanner software. Other users must run Epson Scanner Monitor in the Applications folder before using the button to scan.

Parent topic: [Solving Scanning Problems](#)

Related concepts

[Uninstall Your Scanner Software](#)

Related references

[Scanner Light Status](#)

Scanning Software Does Not Operate Correctly

If your scanning software does not operate correctly, try these solutions:

- Make sure your computer has adequate memory and meets the system requirements for your operating system.
- Make sure your computer is not running in a power-saving mode, such as sleep or standby. If so, wake your system and restart your scanning software.
- Make sure the scanner is turned on.
- Make sure the connection between the scanner and your computer is secure.
- If you upgraded your operating system but did not reinstall your scanning software, try reinstalling it.
- On Windows, be sure that the scanner is listed under **Imaging Devices** in the Device Manager.
- Connect the scanner directly to the computer. The scanner may not work properly when connected through a USB hub.
- If you are scanning on a Mac, make sure no other Epson scanner drivers are installed. If other drivers are installed, uninstall them, then reinstall this scanner's software.
- If you are using a TWAIN-compliant program, make sure that the correct product is selected as the **Scanner** or **Source** setting.

Parent topic: [Solving Scanning Problems](#)

Related concepts

[Uninstall Your Scanner Software](#)



Related tasks

[Starting a Scan from a Scanning Program](#)

Cannot Start Epson Scan

If you cannot start Epson Scan, try these solutions:

- Make sure your scanner is turned on and any interface cables are securely connected at both ends.
- Make sure Epson Scan is selected in your scanning program.
- Make sure your computer is not running in a power-saving mode, such as sleep or standby. If so, wake your system and restart Epson Scan.

- If you connected the scanner using a USB cable, make sure it is connected directly to your computer or through only one USB hub.
- Check the connection setting and test the connection using Epson Scan Settings:
 - **Windows 10:** Click  and select **EPSON > EPSON Scan Settings**. Make sure the correct **Connection** setting is selected, then click the **Test** button.
 - **Windows 8.x:** Navigate to the **Apps** screen and select **EPSON Scan Settings**. Make sure the correct **Connection** setting is selected, then click the **Test** button.
 - **Windows (other versions):** Click  or **Start > All Programs** or **Programs > EPSON > EPSON Scan > EPSON Scan Settings**. Make sure the correct **Connection** setting is selected, then click the **Test** button.
 - **Mac:** Open the **Applications** folder, click **Epson Software**, and click **EPSON Scan Settings**. Make sure the correct **Connection** setting is selected, then click the **Test** button.
- Make sure you do not have multiple versions of Epson Scan installed. If you do, uninstall both versions and install one version.
- If you upgraded your operating system but did not reinstall Epson Scan, try reinstalling it.
- If you are using a TWAIN-compliant program, make sure that the correct product is selected as the **Scanner** or **Source** setting.

Parent topic: [Solving Scanning Problems](#)

Related concepts

[Uninstall Your Scanner Software](#)

Related tasks

[Scanning with Epson Scan](#)

Original Feeds Incorrectly in Scanner

If you have problems feeding originals in your scanner, try these solutions:

- Load only an original that meets the specifications for your scanner.
- Clean inside the scanner using a cleaning sheet.

Parent topic: [Solving Scanning Problems](#)

Related references

[Original Document Loading Capacity](#)

[Plastic Card Loading Capacity](#)

Related tasks

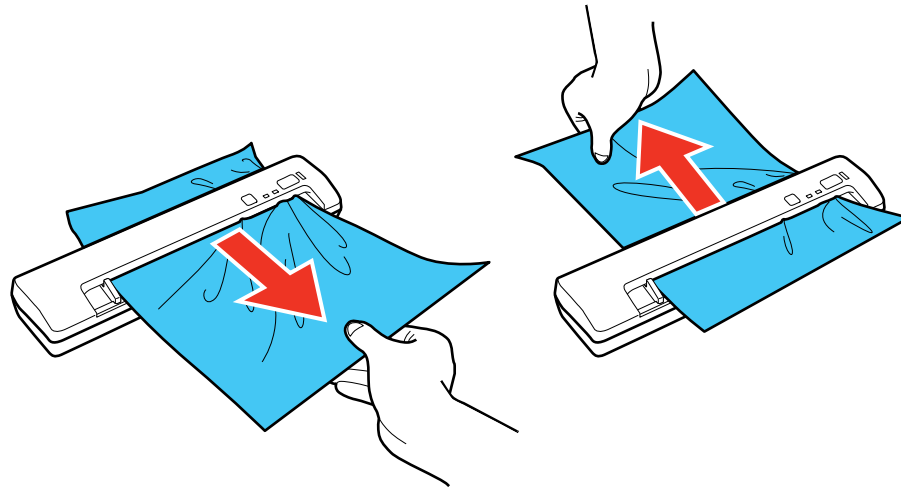
[Cleaning Inside Your Scanner](#)

[Loading Originals in the Input Slot](#)

Original Jams in Scanner

If an original has jammed inside the scanner, follow these steps:

1. Turn off your scanner.
2. Gently pull out the jammed original in the direction that offers the least resistance.



Note: If a piece of paper gets stuck in the roller and remains inside the scanner, remove it carefully with a pair of tweezers in the direction of the output slot. If you cannot remove it, contact Epson support.

3. Carefully follow all loading instructions when you reload your original.

Parent topic: [Solving Scanning Problems](#)

Related references

[Original Document Loading Capacity](#)

[Plastic Card Loading Capacity](#)

Related tasks

[Loading Originals in the Input Slot](#)

Scanning is Slow

If scanning becomes slow, try these solutions:

- Scan your original at a lower resolution, if possible.
- Make sure your system meets the requirements for your operating system. If you are scanning a high-resolution image, you may need more than the minimum requirements. If necessary, increase your system's memory or reduce the resolution.

Parent topic: [Solving Scanning Problems](#)

Related references

[Windows System Requirements](#)

[Mac System Requirements](#)

Related tasks

[Scanning with Document Capture Pro or Document Capture](#)

[Scanning with Epson Scan](#)

Solving Network Scanning Problems

Check these solutions if you have problems scanning over a network.

[Cannot Scan Over a Network](#)

[Scanner Cannot Connect to a Wireless Router](#)

Parent topic: [Solving Problems](#)

Cannot Scan Over a Network

If you cannot start Epson Scan for scanning over a network, try these solutions:

Note: Document Capture Pro (Windows) and Document Capture (Mac) do not support starting a scan from the scanner button over a wireless network. Launch Epson Scan before scanning from the scanner button.

- If you did not successfully connect to a network while installing your product software, select the link at the end of this topic and follow the steps in "Manually Connecting to a Wi-Fi Network". If you are still unable to connect to a network, try the other solutions in this topic.

- If you are scanning a large original at a high resolution, a network communication error may occur. Try scanning again at a lower resolution.
- If network communication was interrupted while starting Epson Scan, exit Epson Scan, wait a few seconds, and restart it. If Epson Scan cannot restart, turn off your scanner, turn it back on, and try restarting Epson Scan again.
- Check the connection setting and test the connection using Epson Scan Settings:

Windows 10: Click  > **EPSON** > **EPSON Scan Settings**. Make sure the **Connection** setting is set to **Network**, then select your scanner and click the **Test** button.

Windows 8.x: Navigate to the **Apps** screen and select **EPSON Scan Settings**. Make sure the **Connection** setting is set to **Network**, then click the **Test** button.

Windows (other versions): Click  or **Start** > **All Programs** or **Programs** > **EPSON** > **EPSON Scan** > **EPSON Scan Settings**. Make sure the **Connection** setting is set to **Network**, then click the **Test** button.

Mac: Open the **Applications** folder, click **Epson Software**, and click **EPSON Scan Settings**. Make sure the **Connection** setting is set to **Network**, then click the **Test** button.

- You may need to disable the firewall and any anti-virus software on your wireless router.
- If you see the message "Network product is not available: currently being used by user", there may be a communication error between the scanner and computer. Restart the scanner.
- Epson Scan does not support networks that use only IPv6. Use Epson Scan on a network that supports IPv4.
- If the Firewall function is active on Windows XP or later, the scanner may not be discovered by Epson Scan Settings. Open Epson Scan Settings, click **Add**, and enter the IP address for your scanner.
- On a Mac, if you have previously used the scanner with Image Capture, you may need to release the scanner in Image Capture before you can scan with Epson Scan.

Parent topic: [Solving Network Scanning Problems](#)

Related tasks

[Manually Connecting to a Wi-Fi Network](#)

[Setting Up Network Scanning](#)

[Starting a Scan from a Scanner Button](#)

Scanner Cannot Connect to a Wireless Router

If your scanner has trouble finding or connecting to a wireless router, try these solutions:

- If you did not successfully connect to a network while installing your product software, select the link at the end of this topic and follow the steps in "Manually Connecting to a Wi-Fi Network". If you are still unable to connect to a network, try the other solutions in this topic.
- If you are connecting the scanner via Wi-Fi Protected Setup (WPS), make sure you activate WPS on your scanner within 2 minutes of activating WPS discovery mode on the router by pressing the WPS button or enabling the WPS setting in your router firmware.
- Make sure to place your scanner within contact range of your router. Avoid placing your scanner near a microwave oven, 2.4 GHz cordless phone, or large metal object, such as a filing cabinet.

Note: If you are using a 5 GHz wireless router, set the router to operate in dual band (2.4 GHz and 5 GHz) mode. If your router uses a single network name (SSID) for both the 2.4 GHz and 5 GHz band, give each band its own network name (SSID) instead, such as Home Network 2.4 GHz and Home Network 5 GHz. See your router documentation or contact your internet service provider for instructions.

- Verify that your router is operating correctly by connecting to it from your computer or another device.
- You may need to disable the firewall and any anti-virus software on your wireless router.
- Check to see if access restrictions, such as MAC address filtering, are set on the router. If access restrictions are set, add your scanner's MAC address to your router's address list. To obtain your scanner's MAC address, check the label on the back or bottom of your scanner. Then follow the instructions in your router documentation to add the address to the list.
- If your router does not broadcast its network name (SSID), follow the instructions that came with your scanner to enter your wireless network name manually.
- If your router has security enabled, determine the kind of security it is using and any required password or passphrase for connection. Then make sure to enter the exact WEP key or WPA passphrase correctly.
- Check if your computer is restricting the available wireless channels. If so, verify that your wireless access point is using one of the usable channels and change to a usable channel, if necessary.
- The scanner may not be able to communicate with a computer with multiple network interfaces. Disable all network interfaces except for the interface connected to the scanner.
- Enable the DHCP function on the access point or router.
- Check that the scanner's IP address is set correctly.

Parent topic: [Solving Network Scanning Problems](#)

Related concepts

[Wi-Fi Protected Setup \(WPS\)](#)

[Direct Wi-Fi Mode Setup](#)

Related tasks

[Manually Connecting to a Wi-Fi Network](#)

[Determining the Scanner's IP Address](#)

Solving Scanned Image Quality Problems

Check these sections if a scanned image on your computer screen has a quality problem.

[Back of Original Image Appears in Scanned Image](#)

[Scanned Characters are Blurry](#)

[Characters are not Recognized During Conversion to Editable Text \(OCR\)](#)

[Ripple Patterns Appear in an Image](#)

[Spots or Lines Appear in All Scanned Images](#)

[Scanned Image Edges are Cropped](#)

Parent topic: [Solving Problems](#)

Related tasks

[Scanning with Epson Scan](#)

Back of Original Image Appears in Scanned Image

If an image from the back of a thin original appears in your scanned image, make sure you selected the correct Image Type setting for your original and select the **Text Enhancement** setting in Epson Scan. You can also select the **Remove Background** setting in Epson Scan.

Note: If you select **Color** as the Image Type setting, you can change the level from Standard to High to remove more of the background.

Parent topic: [Solving Scanned Image Quality Problems](#)

Related tasks

[Scanning with Epson Scan](#)

Scanned Characters are Blurry

If characters in your scanned images are blurry, try these solutions:

- Make sure you do not move the scanner or original while scanning.
- Operate the scanner on a flat, stable surface.
- Adjust these Epson Scan settings (if available) and try scanning again:
 - Select the **Text Enhancement** setting.
 - Adjust the **Threshold** setting.
 - Increase the **Resolution** setting.

Parent topic: [Solving Scanned Image Quality Problems](#)

Related tasks

[Scanning with Epson Scan](#)

Characters are not Recognized During Conversion to Editable Text (OCR)

If characters in your scanned images are not recognized during OCR conversion, try these solutions:

- Make sure your original is straight.
- Adjust these Epson Scan settings (if available) and try scanning again:
 - Select **Text Enhancement**
 - Select the correct **Image Type** setting
 - Adjust the **Threshold** setting
- Set the scanning resolution between 200 and 600 dpi.
- If you are using OCR software, check the manual for any additional adjustments.

Parent topic: [Solving Scanned Image Quality Problems](#)

Related tasks

[Scanning Using OCR - Windows](#)

[Scanning Using OCR - Mac](#)

Ripple Patterns Appear in an Image

You may see a ripple pattern (called a moiré) in scanned images of printed documents. This is caused by interference from differing pitches in the scanner's screen and your original's halftone screen. To reduce this effect, adjust these Epson Scan settings (if available) and try scanning again:

- Select the **Descreening** setting.
- Select a lower **Resolution** setting.

Parent topic: [Solving Scanned Image Quality Problems](#)

Related tasks

[Scanning with Epson Scan](#)

Spots or Lines Appear in All Scanned Images

If spots or lines appear in all your scanned images, try these solutions:

- Clean the scanner glass.
- Calibrate the scanner.

Note: If you are scanning a plastic card with a shiny surface, it can create a line in the scan.

Parent topic: [Solving Scanned Image Quality Problems](#)


Related tasks

[Cleaning Inside Your Scanner](#)

[Calibrating Your Scanner](#)

Scanned Image Edges are Cropped

If the edges of a scanned image are cropped, try the following solutions:

- Select **Auto Detect** as the Size setting (Epson Scan) or the Document Size setting (Document Capture Pro or Document Capture).
- Adjust the cropping area shown in the **Crop Margins for Size "Auto"** setting in Epson Scan.
 - **Document Capture Pro (Windows):** Select **Detailed Settings** from the Scan window. Click **Configuration** and select the **Document** tab. Adjust the cropping area shown in the **Crop Margins for Size "Auto"** setting.
 - **Document Capture (Mac):** Open the **Scan** menu and select **Display the EPSON Scan Setup Screen**. Click the  Scan button. Select **Main Settings** from the Scan window. Click

Configuration and select the **Document** tab. Adjust the cropping area shown in the **Crop Margins for Size "Auto"** setting.

Parent topic: [Solving Scanned Image Quality Problems](#)

Related tasks

[Scanning with Epson Scan](#)

Uninstall Your Scanner Software

If you have a problem that requires you to uninstall and re-install your software, follow the instructions for your operating system.



[Uninstalling Scanner Software - Windows](#)

[Uninstalling Scanner Software - Mac](#)

Parent topic: [Solving Problems](#)

Uninstalling Scanner Software - Windows

You can uninstall and then re-install your scanner software to solve certain problems.

1. Turn off the scanner.
2. Disconnect any interface cables.
3. Do the following to uninstall each of your scanning software programs, then follow any on-screen instructions:
 - **Windows 10:** Click  and select  (Settings) > **Apps** > **Apps & features**. Select the scanner software program and click **Uninstall**.
 - **Windows 8.x:** Navigate to the **Apps** screen and select **Control Panel** > **Programs** > **Programs and Features**. Select the scanner software program and click **Uninstall/Change**.
 - **Windows 7 or Windows Vista:** Open the Windows **Control Panel** utility. Select **Programs and Features**. (In Classic view, select **Programs** and click **Uninstall a program**.) Select the scanner software program and click **Uninstall/Change**.
 - **Windows XP:** Open the Windows **Control Panel** utility. Double-click **Add or Remove Programs**. Select the scanner software program and click **Change/Remove**.
4. Restart your computer, then see the *Start Here* sheet to re-install your software.

Note: If you find that re-installing your scanner software does not solve a problem, contact Epson.

Parent topic: [Uninstall Your Scanner Software](#)

Uninstalling Scanner Software - Mac

In most cases, you do not need to uninstall your scanner software before re-installing it. However, you can download the Uninstaller utility from the Epson support website to uninstall your scanner software as described here.

1. To download the Uninstaller utility, visit epson.com/support (U.S.), epson.ca/support (Canada), or epson.com.jm/support (Caribbean) and select your product.
2. Follow the instructions on the screen to install the Uninstaller utility.
3. Quit all applications currently running on your Mac.
4. Double-click the **Uninstaller** icon.
5. In the Epson Uninstaller screen, select the checkbox for each software program you want to uninstall.
6. Click **Uninstall**.
7. Follow the on-screen instructions to uninstall the software.
8. To reinstall your scanner software, see the *Start Here* sheet for instructions.

Note: If you find that re-installing your scanner software does not solve a problem, contact Epson.

Parent topic: [Uninstall Your Scanner Software](#)

Where to Get Help

If you need to contact Epson for technical support services, use the following support options.

Internet Support

Visit Epson's support website at epson.com/support (U.S.), epson.ca/support (Canada), or epson.com.jm/support (Caribbean) and select your product for solutions to common problems with your product. You can download utilities and documentation, get FAQs and troubleshooting advice, or e-mail Epson with your questions.

Speak to a Support Representative

Before you call Epson for support, please have the following information ready:

- Product name
- Product serial number (located on a label on the product)
- Proof of purchase (such as a store receipt) and date of purchase

- Computer configuration
- Description of the problem

Then call:

- U.S.: (562) 276-4382, 6 AM to 8 PM, Pacific Time, Monday through Friday, and 7 AM to 4 PM, Pacific Time, Saturday
- Canada: (905) 709-3839, 6 AM to 8 PM, Pacific Time, Monday through Friday, and 7 AM to 4 PM, Pacific Time, Saturday

Days and hours of support are subject to change without notice. Toll or long distance charges may apply.

Note: For help using any other software on your system, see the documentation for that software for technical support.

Purchase Supplies and Accessories

You can purchase genuine Epson accessories at epson.com (U.S. sales), epson.ca (Canadian sales), or epson.com.jm (Caribbean sales). You can also purchase accessories from an Epson authorized reseller. To find the nearest one, call 800-GO-EPSON (800-463-7766) in the U.S. or 800-807-7766 in Canada.

Parent topic: [Solving Problems](#)

Technical Specifications

These sections list the technical specifications for your scanner.

Note: Epson offers a recycling program for end of life Epson products. Please go to [this site](#) (U.S) or [this site](#) (Canada) for information on how to return your Epson products for proper disposal.

[Windows System Requirements](#)

[Mac System Requirements](#)

[General Specifications](#)

[Dimension Specifications](#)

[Electrical Specifications](#)

[Environmental Specifications](#)

[USB Interface Specifications](#)

[Network Interface Specifications](#)

[Safety and Approvals Specifications](#)

Windows System Requirements

Make sure your system meets these requirements before using it with your scanner.

System	Microsoft Windows 10, Windows 8.x, Windows 7, Windows Vista, Windows XP Home Edition, Windows XP Professional Edition, Windows XP Professional x64 Edition
Interface	External USB port (Type A)
Display	Color monitor with 800 × 600 resolution or higher and 24-bit color (Full Color)

Note: For the latest product software available for your operating system, visit the Epson support site at [epson.com/support](#) (U.S.), [epson.ca/support](#) (Canada), or [epson.com.jm/support](#) (Caribbean), select your product, and select **Downloads**.

Parent topic: [Technical Specifications](#)

Mac System Requirements

Make sure your system meets these requirements before using it with your scanner.

System	macOS 10.13.x, macOS 10.12.x, OS X 10.11.x, OS X 10.10.x, 10.9.x, 10.8.x, 10.7.x, 10.6.x, 10.5.8 (Fast user switching on Mac OS X is not supported.)
Interface	Macintosh USB
Display	Color monitor with 800 × 600 resolution or higher and millions of colors

Note: Epson Scan does not support the UNIX File System (UFS) for OS X. Install Epson Scan on a disk or in a partition that does not use UFS.

Note: For the latest product software available for your operating system, visit the Epson support site at epson.com/support (U.S.), epson.ca/support (Canada), or epson.com.jm/support (Caribbean), select your product, and select **Downloads**.

Parent topic: [Technical Specifications](#)

General Specifications

Scanner type	Sheet feed, simplex color A4 scanner
Photoelectric device	CIS
Effective pixels	5154 × 8400 pixels at 600 dpi
Document size	Maximum: Up to 8.5 × 14 inches (215.9 × 355.6 mm) at 600 dpi Windows maximum: 8.5 × 36 inches (215.9 × 914.4 mm) at 300 dpi or lower Mac maximum: 8.5 × 16.5 inches (215.9 × 420.1 mm) at 300 dpi or lower Minimum: 2 × 2.9 inches (52 × 73.7 mm); portrait orientation 3.4 × 2.1 inches (85.6 × 54 mm); landscape orientation

Paper input	Facedown loading
Paper output	Facedown ejection
Paper capacity	1 sheet of paper at 9 to 72 lb (35 to 270 g/m ²) weight
Scanning resolution	600 dpi (main scan) 600 dpi with Micro Step (sub scan) (up to 300 dpi or lower for paper longer than 14 inches (355.6 mm))
Output resolution	50 to 1200 dpi in 1 dpi increments
Image data	16 bits per pixel per color internal 1 to 8 bits per pixel per color external
Interface	One Hi-Speed USB port
Light source	RGB LED

Parent topic: [Technical Specifications](#)

Dimension Specifications

Height	1.7 inches (43 mm)
Width	11.7 inches (296 mm)
Depth	2.7 inches (69 mm)
Weight (without batteries)	1.14 lb (515 g)

Note: Dimensions do not include projecting parts.

Parent topic: [Technical Specifications](#)

Electrical Specifications

Note: Power consumption varies depending on operating conditions or whether an option is installed.

Power supply	Four AA-size alkaline, Ni-MH, or lithium batteries
---------------------	--

External power supply	USB bus power: DC5V, 0.5 A Optional AC adapter model: SYS1319-1005
Power consumption	USB connection: Operating: 2.5 W Ready mode: 1.3 W Sleep mode: 1.3 W Power off mode: 0.0125 W Wireless network connection: Operating: 5.5 W Ready mode: 3.5 W Sleep mode: 3.0 W Power off mode: 0.4 W

Parent topic: [Technical Specifications](#)

Environmental Specifications

Temperature	Operating: 50 to 95 °F (10 to 35 °C) Storage: –13 to 140 °F (–25 to 60 °C)
Humidity (non-condensing)	Operating: 10 to 80% RH Storage: 10 to 90% RH
Operating conditions	Ordinary office or home conditions

Note: Avoid operating the scanner in direct sunlight, near a strong light source, or in extremely dusty conditions.

Parent topic: [Technical Specifications](#)

USB Interface Specifications

Interface type	Universal Serial Bus Specifications Revision 2.0
-----------------------	--

Electrical standard	Hi-Speed mode (480 Mbits per second)
Connector type	One Type B port

Note: The product may not operate if connected to a computer USB port on a keyboard or monitor, or if connected using a long USB cable.

Parent topic: [Technical Specifications](#)

Network Interface Specifications

Wireless LAN standard	IEEE 802.11 b/g/n
Wireless security	WEP (64/128 bit) WPA-PSK (TKIP/AES); WPA2 compliant with support for WPA/WPA2 personal
Frequency band	2.4 GHz
Communication mode	Infrastructure mode Direct Wi-Fi connection (access point mode)

Note: Wireless LAN standard complies with either IEEE 802.11 b/g or IEEE 802.11 b/g/n, depending on purchase location.

Parent topic: [Technical Specifications](#)

Safety and Approvals Specifications

United States	EMC: FCC part 15 Subpart B class B
Canada	EMC: CAN/CSA-CEI/IEC CISPR 22 Class B

This equipment contains the following wireless module:

- Manufacturer: Askey Computer Corporation.
- Type: WLU6117-D69 (RoHS)

This product conforms to Part 15 of FCC Rules and RSS-210 of the IC Rules. Epson cannot accept responsibility for any failure to satisfy the protection requirements resulting from a non-recommended

modification of the product. Operation is subject to the following two conditions: (1) this device may not cause harmful interference, and (2) this device must accept any interference received, including interference that may cause undesired operation of the device.

To prevent radio interference to the licensed service, this device is intended to be operated indoors and away from windows to provide maximum shielding. Equipment (or its transmit antenna) that is installed outdoors is subject to licensing.

Parent topic: [Technical Specifications](#)

Notices

Check these sections for important notices about your scanner.

Note: Epson offers a recycling program for end of life Epson products. Please go to [this site](#) (U.S) or [this site](#) (Canada) for information on how to return your Epson products for proper disposal.

[Important Safety Instructions](#)

[Battery Safety Instructions](#)

[Restrictions on Copying](#)

[Default Delay Times for Power Management for Epson Products](#)

[Trademarks](#)

[Copyright Notice](#)

Important Safety Instructions

Follow these safety instructions when setting up and using the scanner:

- Read all these instructions, and follow all warnings and instructions marked on the scanner.
- Place the scanner close enough to the computer for the interface cable to reach it easily.
- Do not use with wet hands.
- When connecting this product to a computer or other device with a cable, ensure the correct orientation of the connectors. Each connector has only one correct orientation. Inserting a connector in the wrong orientation may damage both devices connected by the cable.
- Do not insert objects into any opening as they may touch dangerous voltage points or short out parts. Beware of electrical shock hazards.
- Place the product on a flat, stable surface that extends beyond the base of the product in all directions. If you place the product by the wall, leave enough room between the back of the product and the wall so that the scanned document can be ejected. The product will not operate properly if it is tilted at an angle.
- After replacing consumable parts, dispose of them correctly following the rules of your local authority. Do not disassemble them.
- If you notice any unusual effects such as noise, overheating, smoke, odor, discoloration, or deformation, immediately turn off the scanner, unplug the cables (if any), and stop using the scanner.
- Do not subject the scanner to physical impacts or drop the scanner.

- Do not place or store the scanner outdoors, in a car, near excessive dirt or dust, water, heat sources, or in locations subject to shocks, vibrations, condensation, high temperature or humidity, direct sunlight, strong light sources, or rapid changes in temperature or humidity.
- Never disassemble, modify, or attempt to repair the scanner or a scanner option by yourself except as specifically explained in this guide.

Caution: Radio waves from this product may adversely affect the operation of medical equipment, airplanes, or automatically controlled devices, such as pacemakers, automatic doors, or fire alarms. When using this product near such devices or inside a medical facility, follow the directions from authorized staff members at the facility, and follow all posted warnings and directions on the device to avoid causing an accident.

Warning: The cords included with this product contain chemicals, including lead, known to the State of California to cause birth defects or other reproductive harm. ***Wash hands after handling.*** (This notice is provided in accordance with Proposition 65 in Cal. Health & Safety Code § 25249.5 and following.)

USB

- The USB cable should be placed to avoid abrasions, cuts, fraying, crimping, and kinking.
- Do not place objects on top of the USB cable and do not allow the cable to be stepped on or run over. Be particularly careful to keep the USB cable straight at the end.
- Unplug the scanner and the USB cable, and refer servicing to qualified service personnel under the following conditions: Liquid has entered the scanner; the scanner has been dropped or the case has been damaged; the scanner does not operate normally or exhibits a distinct change in performance. (Do not adjust controls that are not covered by the operating instructions.)

Parent topic: [Notices](#)

Battery Safety Instructions

- Use batteries properly to avoid injury or fire caused by leaking, overheating, explosion, erosion, or any other damage to the product.
- If you are not going to use the scanner for a long period, be sure to remove the batteries.
- Keep batteries out of reach of children. If battery acid gets into your eyes or on your skin, immediately rinse the affected area thoroughly with water and seek medical treatment. If a battery is swallowed, seek medical treatment immediately.
- If battery acid leaks from a battery, wipe it off with a cloth and replace the battery with a new one.
- Use AA Ni-MH, alkaline, or lithium batteries.

- Do not use new and old batteries together or mix different types of batteries.
- Insert batteries so that the polarities (+ and –) are correct.
- Remove dead batteries promptly.
- Do not heat batteries or throw them in fire or water.
- Do not remove batteries with metal objects such as tweezers or the tip of a pen.
- Cover the ends of the batteries with tape to prevent combustion or explosion when disposing of them.
- Make sure to follow local battery disposal regulations.

Parent topic: [Notices](#)

Restrictions on Copying

Observe the following restrictions to ensure responsible and legal use of your scanner.

Copying of the following items is prohibited by law:

- Bank bills, coins, government-issued marketable securities, government bond securities, and municipal securities
- Unused postage stamps, pre-stamped postcards, and other official postal items bearing valid postage
- Government-issued revenue stamps, and securities issued according to legal procedure

Exercise caution when copying the following items:

- Private marketable securities (stock certificates, negotiable notes, checks, etc.), monthly passes, concession tickets, etc.
- Passports, driver's licenses, warrants of fitness, road passes, food stamps, tickets, etc.

Note: Copying these items may also be prohibited by law.

Restriction on disassembling and decompiling

You may not disassemble, decompile or otherwise attempt to derive the source code of any software included with this product.

Parent topic: [Notices](#)

Default Delay Times for Power Management for Epson Products

This product will enter sleep mode after a period of nonuse. The time interval has been set at the factory to ensure that the product meets Energy Star standards of energy efficiency, and cannot be modified by the consumer.

Parent topic: [Notices](#)

Trademarks

EPSON® is a registered trademark and EPSON Exceed Your Vision is a registered logomark of Seiko Epson Corporation.

Mac and OS X are trademarks of Apple Inc., registered in the U.S. and other countries.

App Store is a service mark of Apple Inc.

Android, Google Play, and Google Drive are trademarks of Google, Inc.

General Notice: Other product names used herein are for identification purposes only and may be trademarks of their respective owners. Epson disclaims any and all rights in those marks.



Parent topic: [Notices](#)

Copyright Notice

All rights reserved. No part of this publication may be reproduced, stored in a retrieval system, or transmitted in any form or by any means, electronic, mechanical, photocopying, recording, or otherwise, without the prior written permission of Seiko Epson Corporation. The information contained herein is designed only for use with this Epson product. Epson is not responsible for any use of this information as applied to other products.

Neither Seiko Epson Corporation nor its affiliates shall be liable to the purchaser of this product or third parties for damages, losses, costs, or expenses incurred by purchaser or third parties as a result of: accident, misuse, or abuse of this product or unauthorized modifications, repairs, or alterations to this product, or (excluding the U.S.) failure to strictly comply with Seiko Epson Corporation's operating and maintenance instructions.

Seiko Epson Corporation shall not be liable for any damages or problems arising from the use of any options or any consumable products other than those designated as Original Epson Products or Epson Approved Products by Seiko Epson Corporation.

Seiko Epson Corporation shall not be held liable for any damage resulting from electromagnetic interference that occurs from the use of any interface cables other than those designated as Epson approved Products by Seiko Epson Corporation.

This information is subject to change without notice.

[Open Source Software License](#)

[Info-ZIP Copyright and License](#)

[A Note Concerning Responsible Use of Copyrighted Materials](#)

[Copyright Attribution](#)

Parent topic: [Notices](#)

Open Source Software License

1) This product includes open source software programs listed in Section 6) according to the license terms of each open source software program.

2) We provide the source code of the GPL Programs, LGPL Programs and Apache License Program (each is defined in Section 6) until five (5) years after the discontinuation of same model of this product. If you desire to receive the source code above, contact Epson as described in the *User's Guide*. You shall comply with the license terms of each open source software program.

3) The open source software programs are WITHOUT ANY WARRANTY; without even the implied warranty of MERCHANTABILITY AND FITNESS FOR A PARTICULAR PURPOSE. See the license agreements of each open source software program for more details, which are described in OSS.pdf on your scanner software CD.

4) OpenSSL toolkit

This product includes software developed by the OpenSSL project for use in the OpenSSL Toolkit (<http://www.openssl.org/>).

This product includes cryptographic software written by Eric Young (eay@cryptsoft.com).

5) The license terms of each open source software program are described in OSS.pdf on your scanner software CD.

6) The list of open source software programs which this product includes are as follows.

GNU GPL

This product includes the open source software programs which apply the GNU General Public License Version 2 or later version ("GPL Programs").

The list of GPL Programs:

base-passwd-3.5.7
busybox-1.2.2.1
ifupdown-0.6.8
kernel-2.6.18
lsp-arm-versatile926ejs-2.6.18_pro500
module-init-tools-3.2pre1
mount-2.12
net-tools-1.60
netbase-4.29
psmisc-21.5
readline-libs-5.0
sysvinit-2.86
udev-0.093
udhcp 0.9.8cvs20050124-5
util-linux-2.12
usb8786

GNU LGPL

This product includes the open source software programs which apply the GNU Lesser General Public License Version 2 or later version ("LGPL Programs").

The list of LGPL Programs:

uclibc-0.9.29
libusb-libs-0.1.12
zeroconf 0.6.1-1
iksemel 1.4
Apache License

This product includes the open source software program "Bonjour" which apply the Apache License Version2.0 ("Apache License Program").

Bonjour License

This product includes the open source software program "Bonjour" which applies the terms and conditions provided by owner of the copyright to the "Bonjour".

Net-SNMP license

This product includes the open source software program "Net-SNMP" which applies the terms and conditions provided by owner of the copyright to the "Net-SNMP".

OpenSSL License/Original SSLeay License

This product includes the open source software program "OpenSSL toolkit" which applies the license terms of OpenSSL License and Original SSLeay License.

BSD License (Berkeley Software Distribution License)

This product includes the open source software programs which apply the Berkeley Software Distribution License ("BSD Programs").

The list of BSD Programs:

busybox-1.2.2.1

util-linux-2.12

mount-2.12

mvlutils-2.8.4

netkit-ftp-0.17

netkit-base-0.17

portmap-5beta

Sun RPC License

This product includes the open source software programs which apply the Sun RPC License ("Sun RPC Programs").

The list of Sun RPC Programs:

busybox- 1 .2.2.1

netkit-inetd-0.17

portmap-5beta

TCP Wrappers license

This product includes the open source software program "libwrap-libs-7.6" which applies the terms and conditions provided by owner of the copyright to the "TCP Wrappers".

libncurses license

This product includes the open source software program "libncurses-5.4" which applies the terms and conditions provided by owner of the copyright to the "libncurses".

busybox license

This product includes the open source software program "busybox- 1.2.2.1" which applies the terms and conditions provided by owner of the copyright to the "busybox".

linux-ftpd license

This product includes the open source software program "linux-ftpd-0.17" which applies the terms and conditions provided by owner of the copyright to the "linux-ftpd".

SHA1license

This product includes the open source software program "SHA1" which applies the terms and conditions provided by owner of the copyright to the "SHA1".

ARC4 license

This product includes the open source software program "ARC4" which applies the terms and conditions provided by owner of the copyright to the "ARC4".

json_parserlicense

This product includes the open source software program "json_parser" which applies the terms and conditions provided by owner of the copyright to the "json_parser".

MD5license

This product includes the open source software program "MD5" which applies the terms and conditions provided by owner of the copyright to the "MD5".

AESlicense

This product includes the open source software program "AES" which applies the terms and conditions provided by owner of the copyright to the "AES".

Parent topic: [Copyright Notice](#)

Info-ZIP Copyright and License

This is version 2007-Mar-4 of the Info-ZIP license. The definitive version of this document should be available at <ftp://ftp.info-zip.org/pub/infozip/license.html> indefinitely and a copy at <http://www.info-zip.org/pub/infozip/license.html>.

Copyright (c) 1990-2007 Info-ZIP. All rights reserved.

For the purposes of this copyright and license, "Info-ZIP" is defined as the following set of individuals:

Mark Adler, John Bush, Karl Davis, Harald Denker, Jean-Michel Dubois, Jean-loup Gailly, Hunter Goatley, Ed Gordon, Ian Gorman, Chris Herborth, Dirk Haase, Greg Hartwig, Robert Heath, Jonathan Hudson, Paul Kienitz, David Kirschbaum, Johnny Lee, Onno van der Linden, Igor Mandrichenko, Steve P. Miller, Sergio Monesi, Keith Owens, George Petrov, Greg Roelofs, Kai Uwe Rommel, Steve Salisbury, Dave Smith, Steven M. Schweda, Christian Spieler, Cosmin Truta, Antoine Verheijen, Paul von Behren, Rich Wales, Mike White.

This software is provided "as is," without warranty of any kind, express or implied. In no event shall Info-ZIP or its contributors be held liable for any direct, indirect, incidental, special or consequential damages arising out of the use of or inability to use this software.

Permission is granted to anyone to use this software for any purpose, including commercial applications, and to alter it and redistribute it freely, subject to the above disclaimer and the following restrictions:

1. Redistributions of source code (in whole or in part) must retain the above copyright notice, definition, disclaimer, and this list of conditions.
2. Redistributions in binary form (compiled executables and libraries) must reproduce the above copyright notice, definition, disclaimer, and this list of conditions in documentation and/or other materials provided with the distribution. The sole exception to this condition is redistribution of a standard UnZipSFX binary (including SFXWiz) as part of a self-extracting archive; that is permitted without inclusion of this license, as long as the normal SFX banner has not been removed from the binary or disabled.
3. Altered versions--including, but not limited to, ports to new operating systems, existing ports with new graphical interfaces, versions with modified or added functionality, and dynamic, shared, or static library versions not from Info-ZIP--must be plainly marked as such and must not be misrepresented as being the original source or, if binaries, compiled from the original source. Such altered versions also must not be misrepresented as being Info-ZIP releases--including, but not limited to, labeling of the altered versions with the names "Info-ZIP" (or any variation thereof, including, but not limited to, different capitalizations), "Pocket UnZip," "WiZ" or "MacZip" without the explicit permission of Info-ZIP. Such altered versions are further prohibited from misrepresentative use of the Zip-Bugs or Info-ZIP e-mail addresses or the Info-ZIP URL(s), such as to imply Info-ZIP will provide support for the altered versions.
4. Info-ZIP retains the right to use the names "Info-ZIP," "Zip," "UnZip," "UnZipSFX," "WiZ," "Pocket UnZip," "Pocket Zip," and "MacZip" for its own source and binary releases.

Parent topic: [Copyright Notice](#)

A Note Concerning Responsible Use of Copyrighted Materials

Epson encourages each user to be responsible and respectful of the copyright laws when using any Epson product. While some countries' laws permit limited copying or reuse of copyrighted material in certain circumstances, those circumstances may not be as broad as some people assume. Contact your legal advisor for any questions regarding copyright law.

Parent topic: [Copyright Notice](#)

Copyright Attribution

© 2018 Epson America, Inc.

2/18

CPD-40796R3

Parent topic: [Copyright Notice](#)