

Animal & Plant Cell Coloring Worksheet

Directions: "This is not some sort of happy playtime activity but an integral part of what has proved to be a highly effective learning method... First, you will color a heading or title, which requires you to take a close look at the word and even its spelling. Then, with the same color, you will color the associated parts of the illustration. [This activity] requires... the parts of your brain that are involved in movements and in perception of color and shape..."

1. You will need to use colored pencils or pens that will not bleed through the paper.
2. Color in the heading or title (outlined words) and then color the corresponding structure in the illustration labeled with the same letter.
3. Use the following key for each symbol:
 - = color in black (Heading)
 - ★ = color in gray (Subheading)

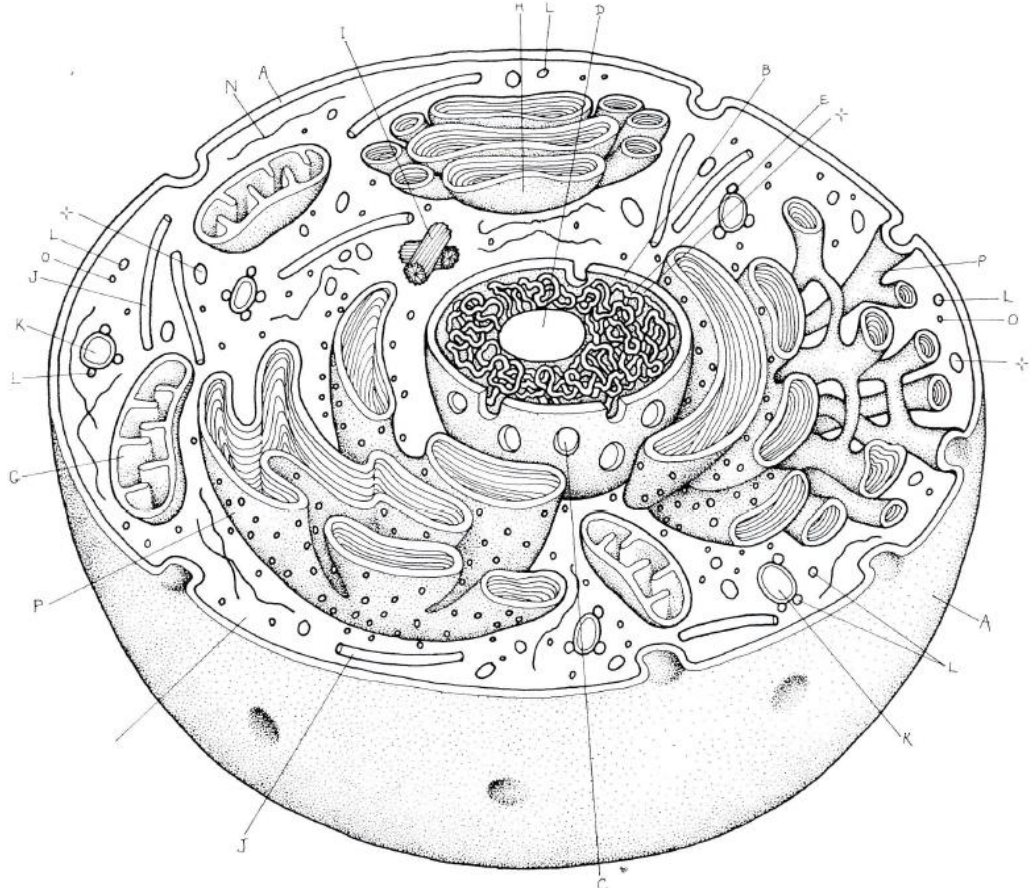
—|— = do not color

A¹, A². Etc. = implies related structures, color with shades of the same color

ANIMAL CELL.

CELL MEMBRANE_A
 NUCLEUS★
 NUCLEAR ENVELOPE_B
 NUCLEAR PORE_C
 NUCLEOLUS_D
 CHROMATIN_E
 CYTOPLASM★
 MITOCHONDRION_G
 GOLGI COMPLEX_H

CENTRIOLE_I
 MICROTUBULE_J
 VACUOLE_K
 LYSOSOME_L
 MICROFILAMENT_N
 RIBOSOME_O
 ENDOPLASMIC RETICULUM_P



PLANT CELL.

CELL MEMBRANE_A
 CELL WALL_B
 VACUOLE_D
 CHLOROPLAST_F
 GOLGI COMPLEX_I
 RIBOSOME_L

ENDOPLASMIC RETICULUM_K
 MITOCHONDRION_N
 MICROTUBULE_M
 MICROFILAMENT_N
 LYSOSOME_O
 NUCLEUS_★
 NUCLEAR ENVELOPE_R
 NUCLEAR PORE_S

