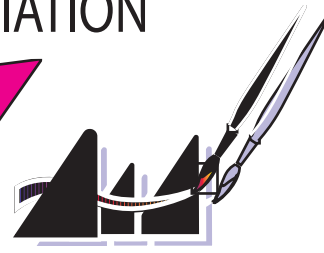


ARIZONA WATERCOLOR ASSOCIATION

NEWS

Website: www.azwatercolor.com Email: AWA@Watercolor.org

OCTOBER ARTIST - CARL PURCELL

CARL PURCELL TAUGHT PAINTING AND DRAWING AT SNOW COLLEGE IN UTAH FOR 30 YEARS. HE IS CURRENTLY RETIRED FROM THE COLLEGE BUT IS A POPULAR PAINTING AND DRAWING WORKSHOP INSTRUCTOR, HAVING CONDUCTED WORKSHOPS THROUGHOUT THE WEST, FROM ALASKA TO ARIZONA, AND IN GREAT BRITAIN.

CARL IS THE AUTHOR OF THE NORTH LIGHT PUBLICATIONS, PAINTING WITH YOUR ARTIST'S BRAIN (A WATERCOLOR BOOK) AND DRAWING WITH YOUR ARTIST'S BRAIN. IN ADDITION HIS ART HAS BEEN FEATURED IN NUMEROUS ARTICLES PUBLISHED IN THE ARTIST'S MAGAZINE AND IN SPLASH I. HE HAS BEEN INVITED TO JURY EXHIBITS IN COLORADO, NEW MEXICO, WYOMING, UTAH, NEVADA, MICHIGAN AND CALIFORNIA.

CARL HAS ACHIEVED SIGNATURE MEMBER STATUS IN THE NATIONAL WATERCOLOR SOCIETY AND WAS GIVEN HONOR MEMBER STATUS IN THE UTAH WATERCOLOR SOCIETY FOR HIS CONTRIBUTIONS TO WATERCOLOR IN THE STATE. HE HAS WON NUMEROUS AWARDS, INCLUDING A PURCHASE AWARD IN THE 2008 NATIONAL WATERCOLOR SOCIETY'S INTERNATIONAL EXHIBITION. IN 2009 CARL WAS CHOSEN AS ONE OF THE PANEL OF THREE JUDGES FOR THE NATIONAL WATERCOLOR SOCIETY ANNUAL EXHIBITION.

"STONE CADENCE" IS ONE OF A SERIES OF PAINTINGS HE HAS BEEN WORKING ON THAT EXPLORE THE RHYTHMIC PATTERNS HE SEES AND FEELS IN ROCK SURFACES. CARL STATES, "I AM DRAWN TO THE CONTRAST OF VERTICAL FISSURES AND CRACKS THAT CUT THROUGH THE HORIZONTAL LAYERS OF ROCK STRATA. TO ME THESE COUNTER THRUSTS ARE LIKE THE UNPLANNED EVENTS THAT CUT THROUGH THE WELL-LAID PLANS OF OUR LIVES. I SEE THESE ROCKS AS LIVING FORMS, MOVING AND DANCING TO THE RHYTHM OF LIFE."

WHILE HIS PRIMARY MEDIUM OF CHOICE IS WATERCOLOR, CARL ALSO LOVES TO WORK IN OIL AND ACRYLIC. CARL LIVES WITH HIS WIFE NAN IN MANTI, A SMALL TOWN IN CENTRAL UTAH. HIS PAINTINGS REFLECT HIS LOVE OF NATURE, ESPECIALLY THE ROCK CANYON COUNTRY OF UTAH.



"HERE CHICKIE CHICKIE" BY CARL PURCELL

IN THIS *Issue*

- * Carl Purcell Workshops
- * President's Message
- * Member Profile Featured
- * News and Announcements
- * Arizona Art Alliance
- * AWA Member News
- * AWA Calendar

PRESIDENT'S MESSAGE

The AWA President's Message
October 2012

THIS IS YOUR BRAIN ON ART

Today I hung the first 10 paintings for the Fall Membership Show—those were the paintings that had been shipped or left with me by those who could not be there in person on the 29th. It is already impressive to see the variety of work that our members do, and this is only 1/12th of the show! Since this happened on the day I finished reading "Incognito—The Secret Lives of the Brain", it was way too easy to get very analytical, but you might be interested in comparing the latest thoughts on how our brains work and why every artist seems to have something different to say.

Those of you who are parents know that children develop in phases. There are periods where there is rapid brain growth and then other phases, with names like "middle school" where nothing seems to work, but the brain is

actually stitching together the progress from the previous stage. In high school, our habits for conceptual thinking are set or abandoned regardless of where later interests will take us. This is the time where some advocates push "STEM" (Science, Technology, Engineering and Math) and others are trying to make it STEAM by adding A for Art. It turns out that the ability to simultaneously consider a wide variety of options in what seems to be an intuitive approach, as we do all the time in our art, makes all of the other thought processes work better. Unfortunately, there is not so much support for this ability because it is hard to test for using "left-brain" logical word tests.

So, without getting into scientific jargon, let's think about the thought processes our work. I really liked the comment by David Eagleman, a neurosurgeon, that "If our brains were simple enough to be understood, we wouldn't be smart enough to understand them". Yup, its complicated. The most amazing aspect is that consciousness is an extremely small part of our brain activity. So many things need to happen to make us function that we cannot possibly pay

attention to all of them, but they still influence how we feel and what we decide. About 1/3 of our brain is tied into vision, so it should be obvious that visual art is important. In fact, the biggest function in the brain of the newborn is facial recognition. Can you guess why portraits attract so much interest? When you really study what is happening, nearly all of seeing is an illusion. For survival, our brains are developed to detect danger and to sort out irrelevant information—you just can't really look at everything at once equally. That tells us that choosing what to emphasize in a painting is critical for making our point. As an artist, you are guiding the perception of those who will look at your painting while wondering what in the world you were trying to do.

In watercolor, it should be no surprise that color is a big deal and water just helps spread it around. You probably know that 5% of men have little color vision and 20% have some deficiencies,

AWA 2012-2013 OFFICERS

Executive Board

* = voting board member

** = votes only in the absence of the board member they are under

President:
Jeremy Jones* 480-563-5916
1st Vice President (Membership & Database):
Jane Underhill* 602-795-3545
2nd Vice President (Jurors Exhibitions):
Donna Eastman Liddle 480-369-0669
Co-Director:
3rd Vice President (Programs):
Liz Ramsey* 480-747-7763
Recording Secretary:
Beverly Farrer* 602-569-6680
Corresp. Secretary:
Diane Kent* 602-938-3867
Treasurer:
Bruce Sink* 602-738-8121
Financial Secretary:
Sherry Kimmel 602-439-6846
Western Federation Society Delegate:
Kathryn Tartaglia* 480-229-1023
Alternate: JoEllen Layton** 480-730-9887
Director at Large (Juror workshops):
Maureen McGuire* 602-277-0167
Co-Director: Diane Parnitzke 623-386-2098

Director at Large (Membership Workshops):
Helen Miller* 602-954-7918
Co-Director: Linda Schooley** 623-388-6255
President Emeritus:
Diane Parnitzke* 623-386-2098

Committees

Charitable Fundraiser Chair:
Sherry Kimmel 602-439-6846
Charitable Fundraiser Co-Chair:
Diane Parnitzke 623-386-2098
AZ Art Alliance Representative:
Judy Delmonico Rolls 480-990-1359
By-laws, Parliamentarian:
Mickey Daniels 602-840-1388
Membership Assistant:
Pam Bleakney 623-214-429
Fun Table: Katherine Kurgen 480-636-9130
Historian: Thomas Schultz 623-271-6056
Honor Society:
Shirley Klein Kleppe 480-585-5699
Merchants Awards:
Karen Riehm 480-460-7496
Newsletter Publisher:
Casey Weber@yahoo.com 480-290-8517

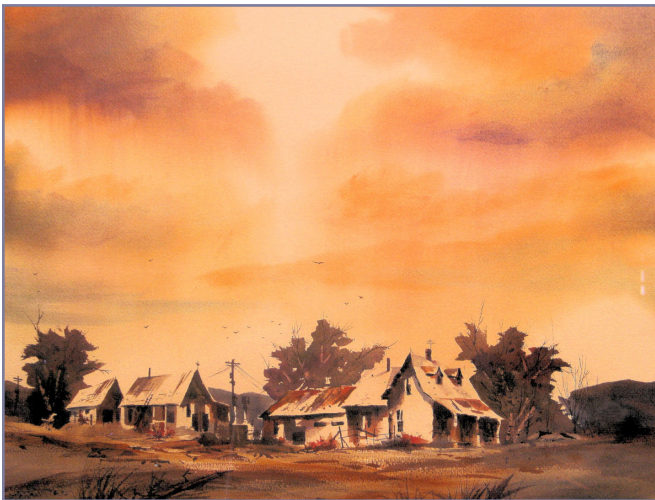
Newsletter Editor:
Liz Ramsey 480-747-7763
lizramsey@cox.net
Overhead Mirror Set-up at Meetings:
Alex Pekala 623-412-1866
Photographer for AWA events:
Karen Riehm 602-318-5387
Prospectus/Award certificates:
Nancy Herbst 480-839-8827
Publicity:
Sam Morse 602-863-0538
Student Member Committee:
OPEN
Co-Chair: Candice Diaz 602-237-4354
Scholarship Committee Chair:
Dolly Maitzen 602-867-8155
Co-Chair: Gayla Bonnell 602-482-7308
Scholarships/Special Events Raffle:
En Chen Soo 480-754-9339
Social Committee:
Joyce Parmely 623-931-9719
Webmaster: www.azwatercolor.com
Bruce Sink 602-738-8121
WFWS 2014 Hosting Committee Chair:
JoEllen Layton 480-730-9887

color sense and see colors that others don't see? Hardly anyone will see your work the way you saw it physically or mentally!

Humans tend to feel more comfortable with familiar scenes that match familiar patterns, but more sophisticated people enjoy challenges. This is true in politics, where more emphasis is often placed on phrases people want to hear than on facts, and it also accounts for so many paintings of Bambi, flowers, kids and other pleasant scenes. Do you feel comfortable stating the obvious and "pretty" side of things or are you willing to "make a statement"? Were you comfortable with this study until now...well, that is part of what makes us all different. Of course, many of our members find a way to paint "pretty" scenes in new ways. It also turns out that our brains work best when trying to resolve a conflict. You have more chance of being creative when things "go wrong".

We also have something in common with athletes: the more you do something, the less you have to think about it. If you paint a lot, you can think about the effect you want to achieve and go for it without thinking about how to operate a paint brush, so get back to where you like to paint and just do it!

Jeremy
Jones
President



PAINTING BY ALEX PEKALA

CARL PURCELL WORKSHOPS

DON'T FORGET TO SIGN UP FOR THE CARL PURCELL WORKSHOPS. WORKSHOPS ARE HELD AT THE AAG (ARIZONA ARTIST GUILD) 18411 N. 7TH AVE, PHX, AZ 85023, AND ARE FROM 9-5.

___CARL PURCELL WORKSHOP OCTOBER 10,11,12
MEMBERS \$235; NON-MEMBERS \$275

___CARL PURCELL WORKSHOP SAT. OCTOBER 13
MEMBERS \$75; NON-MEMBERS \$90

REMINDER: TO THOSE MEMBERS ALREADY SIGNED UP FOR THE CARL PURCELL WORKSHOP:

Dates: October 10,11, 12 for the three day class and Sat. the 13th for the one day class.

Time: Classes are from 9AM to 4PM.

Where: At the AAG (AZ Artists Guild) building 18411 N. 7th Ave, Phoenix, just south of Union Hills

Snacks and drinks available. Bring lunch or eat out. We have a kitchen.

Note: Bring your painting reference materials
YOU'RE GONNA LOVE CARL!

ALSO, DON'T FORGET TO MAKE PLANS FOR: JEANNIE McGUIRE FIGURATIVE WORKSHOPS, APRIL 10,11,12 & 13, 2013.

Check out her work online and watch future AWA newsletters for more details

Jeannie has already listed AWA on her calendar and we are already getting inquiries. Registration will open November 1, 2012. To be held also at the AAG Buiding. Registration forms and prices are on AWA website.

JEANNIE IS AN AWS GOLD MEDAL AWARD WINNER, AND EXCITED TO BE WITH US!

Happy painting,
Maureen McGuire
Chairperson, AWA Juror Workshops
mmcguire@fastq.com 602-277-0167

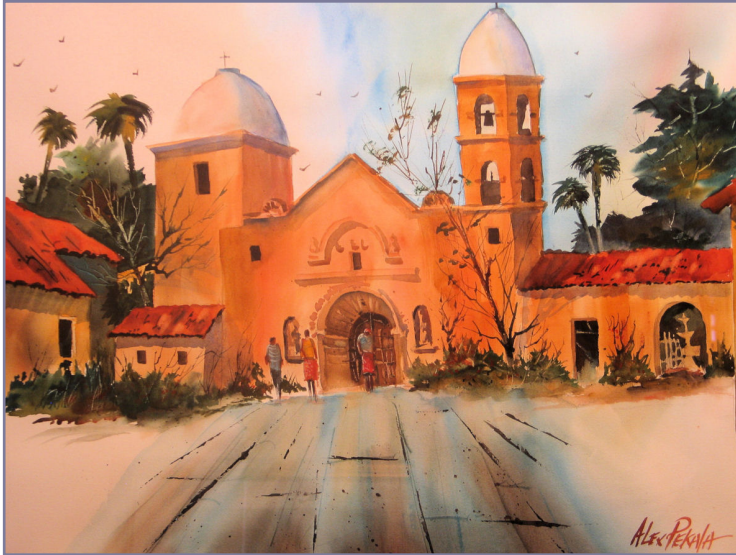
ALEX PEKALA: AWA FEATURED ARTIST "THE BEAUTY OF WATERCOLOR"

"FAILURE TO PLAN, IS PLANNING TO FAIL"....TONY VAN HASSELT

ALEX'S SUCCESS IN HIS PAINTING ENDEAVORS IS THE DIRECT RESULT OF PLANNING. HIS APPROACH TO ALL OF HIS SUPERB WATERCOLOR PAINTINGS LIES IN THE "ROAD MAP" OF A VALUE STUDY THAT HE INITIALLY EXECUTES. "I USE 18X 24 DRAWING PAPER AND MAKE A PENCIL DRAWING FIRST, THEN USE BLACK AND GREY MARKERS TO SHOW THE VALUES OF THE SUBJECT." HE STATED THAT HE SPENDS A GREAT DEAL OF TIME DURING THIS

PROCESS SO HE KNOWS WHERE HE IS GOING WHEN HE STARTS TO PAINT. "NO MATTER WHAT COLOR YOU PAINT YOUR SUBJECT, AS LONG AS YOU FOLLOW YOUR VALUE STUDY, THE PAINTING WILL LOOK RIGHT." THIS IS ONE OF THE PRACTICES THAT HAS ASSURED HIS IMPROVED PAINTING OVER SEVERAL DECADES. ANOTHER DISCIPLINE IS TO LEAVE A LOT OF "WHITE PAPER." THE VIEWER'S EYE IS DIRECTED TOWARD THE WHITE PAPER AND THAT IS "MONEY IN THE BANK!!" ALEX WETS HIS PAPER FIRST AND WITH THIS DAMP SURFACE HE APPLIES A LIBERAL AMOUNT OF PAINT USING AS FEW BRUSH STROKES AS POSSIBLE. "I TRY TO SUGGEST AND NOT BE SO PERFECT....SOMETIMES THINGS HAPPEN AND THAT IS THE BEAUTY OF WATERCOLOR."

TENACITY AND PERSEVERANCE IS THE KEY TO BECOMING AN ARTIST. ALEX DID NOT HAVE A ROLE MODEL IN HIS FAMILY BUT SINCE CHILDHOOD HE HAS BEEN DRAWING AND WINNING AWARDS FOR HIS ART. HIS INTENTION WAS TO BECOME AN ILLUSTRATOR FOR WALT DISNEY. HE SAID THAT HE DREW WHATEVER WAS IN HIS ENVIRONMENT. HIS



"SAN PEDRO, TUBATAMA, MEX." BY ALEX PEKALA

FAMILY ENCOURAGED HIM TO FOLLOW A DIFFERENT PATH FROM ART BUT TRUE TO THE ARTIST IN HIS SOUL, HE HAS CONTINUED TO DRAW AND PAINT ALL HIS LIFE. HE STATES THAT HE IS SELF-TAUGHT FROM READING, ATTENDING WORKSHOPS AND "PRACTICE-PRACTICE-PRACTICE"!!

ALEX ENJOYS BOTH STUDIO AND PLEIN AIRE PAINTING. HE STATES THAT THERE ARE ADVANTAGES TO BOTH. HE SAVORS PAINTING OR SKETCHING OUTDOORS. IT IS THE BEST WAY TO COLLECT INFORMATION, INSTEAD OF RELYING ON PHOTOS. "THERE IS A ONE ON ONE FEELING WITH THE LANDSCAPE WHEN YOU PAINT OR SKETCH PLEIN AIRE." TRUE TO HIS WORDS, ALEX HAS LED A NUMBER OF PLEIN AIRE WORKSHOPS. HE IS ATTRACTED TO A SUBJECT BECAUSE OF SHAPES, LIGHT AND SHADOW PATTERN. HE IS JUDICIOUS IN HIS CHOOSING WHAT WILL MAKE A PLEASING DESIGN. HE MAY MOVE THINGS AROUND OR LEAVE ITEMS OUT OF THE FINAL PAINTING. BUILDINGS, PEOPLE AND ANIMALS PROVIDE A FOCAL

POINT IN MANY OF ALEX'S RENDERINGS. THIS COUPLED WITH STRONG LIGHT AND SHADOW PATTERNS OFTEN PROVIDE A COMFORTABLE, PEACEFUL SCENE THAT MANY BUYERS SAY REMINDS THEM OF A "PLACE THEY HAVE BEEN."

Alex feels a breakthrough in his craft came when he started to rely on a value sketch and a planning process. This writer feels that Alex's strength comes from his strong drawing skills and his colorful, painterly renditions of familiar scenes. He said he would love to have "looked over the shoulders of John Pike, Ted Kautzky and Ed Whitney." However, I observe that he has demanded a following on his own. He continues to sustain recognition by selling his art and receiving awards.

Alex is an authentic artist who has practiced a form of art from his formative years because, "he needed to draw and tell a story." He still believes that the "Beauty of Watercolor" is the transparent washes and the white of the paper." His paintings tell a story using these principles and the viewer cannot help but be mesmerized by his execution and interpretation.



PAINT OUT IN SEDONA

ANYONE INTERESTED IS WELCOME TO JOIN US IN SEDONA ON SATURDAY, OCTOBER 20TH AT RED ROCK CROSSING PARK TO SPEND THE AFTERNOON PAINTING. THIS IS AN INFORMAL EVENT, AND WE'LL BE JOINED BY SOME MEMBERS OF THE NORTHERN ARIZONA WATERCOLOR SOCIETY AS WELL. WE RECOMMEND THAT YOU FORM A CARPOOL WITH OTHERS WHO WOULD LIKE TO TRAVEL AT THE SAME TIMES. THE BEST VIEW FROM THE PARK DOES NOT HAVE DIRECT SUNLIGHT UNTIL ABOUT NOON, SO YOU MIGHT PLAN TO HAVE LUNCH IN TOWN AND THEN GET TO THE PARK LATER. SOME OF US WILL GO EARLY AND PAINT SOMEWHERE ELSE IN THE MORNING THEN MOVE TO THE PARK IN THE AFTERNOON. REMEMBER THAT YOU NEED A RED ROCKS PASS FOR MANY LOCATIONS. THEY ARE AVAILABLE IN MANY CONVENIENCE STORES AND AT THE FOREST SERVICE ON THE MAIN ROAD INTO TOWN. RECOMMENDED LOCATIONS FOR PAINTING INCLUDE BELL ROCK, SCHNEBLY HILL, AND SEVERAL LOCATIONS NEAR TOWN IF YOU CAN FIND PARKING. THERE WILL BE A PLEIN AIRE FESTIVAL GOING ON AND WE HEAR THERE WILL BE SEVERAL ARTISTS PAINTING DOWNTOWN. THE PARK IS SUPPOSED TO BE OPEN UNTIL 8 IF YOU LIKE TO PAINT IN THE DARK. THERE WILL BE SIGN UP LISTS FOR DRIVERS AND PASSENGERS AT THE OCTOBER MEETING. THERE IS ALSO THE POSSIBILITY OF DOING THIS AGAIN IN THE SPRING.

DIRECTIONS TO PAINT OUT: DRIVE WEST FROM SEDONA ON US 89A. JUST OUTSIDE TOWN, TURN SOUTH ON FR216 (UPPER RED ROCK LOOP ROAD). DRIVE ABOUT 1.5 MILES AND FOLLOW THE SIGNS TO RED ROCK CROSSING. ALL ROADS EXCEPT THE SHORT SEGMENT LEADING FROM RED ROCK CROSSING ROAD TO THE PICNIC AREA ARE PAVED.

THANK YOU TO ARIZONA ART SUPPLY WHO SPONSORED THE \$25 GIFT CERTIFICATE WHICH WAS WON BY JEAN ROSSMAN. WE MADE \$85 FROM THE RAFFLE SALE FOR THE AWA SCHOLARSHIP FUND.

ARIZONA ART ALLIANCE: A COMPANION IN THE ART WORLD

ARIZONA ART ALLIANCE IS A NON-PROFIT ORGANIZATION THAT WAS FOUNDED IN 2000 TO PROVIDE VENUES FOR MEMBER ARTISTS TO SHOW AND SELL. AWA IS ONE OF THE 30+ ORGANIZATIONS THAT MAKE UP THE ART ALLIANCE. THE GALLERY IS LOCATED AT THE PAVILIONS AT TALKING STICK AT INDIAN BEND AND THE LOOP 101 IN NORTH SCOTTSDALE. AWA MEMBERS HAVE CERTAIN PRIVILEGES AS NON-JURIED MEMBERS OF THE ART ALLIANCE. THE INFORMATION TO BECOME A JURIED MEMBER OF THE ART ALLIANCE IS FOUND ON THE WEBSITE WWW.AZARTALLIANCE.COM.

EACH YEAR THERE IS A SPRING SHOW AND A HOLIDAY SHOW. THESE SHOWS LAST FOR ONE MONTH. AN EXCITING OPPORTUNITY THIS YEAR IS THE TRIBUTE BEING PAID TO OUR US MILITARY VETERANS. NOVEMBER IS THE DESIGNATED MONTH TO HOST SPECIAL ACTIVITIES AND EVENTS PLANNED TO HONOR OUR MILITARY HEROES.

PLEASE REVIEW THE WEBSITE FOR ADDITIONAL INFORMATION ON EXHIBITS AND VOLUNTEER ACTIVITIES. IN SUMMARY; THE AZ ART ALLIANCE IS A VIBRANT ORGANIZATION THAT PROVIDES NUMEROUS OPPORTUNITIES TO DISPLAY AND SELL ART WORK. THERE ARE ALSO MANY EDUCATIONAL ART WORKSHOPS OFFERED AT THE GALLERY LOCATION. GET ON THE EMAIL LISTING TO STAY UPDATED ON ALL THE PROGRAMMING. THE AZ ART ALLIANCE NEWSLETTER IS AVAILABLE EACH MONTH AT THE ABOVE WEBSITE.

AWA WILL CONTINUE TO INFORM OUR MEMBERS EACH MONTH REGARDING THE EVENTS OF THE AZ ART ALLIANCE. JUDY DELMONICO-ROLL IS OUR CONTACT PERSON. SHE IS A VITAL MEMBER OF AWA AND AZ ART ALLIANCE AND IS AVAILABLE TO ANSWER QUESTIONS REGARDING THE MANY OPPORTUNITIES AFFORDED BY THIS LIAISON.



THE NEW 2012-13 AWA MANUAL/DIRECTORY IS READY FOR PURCHASE. A LIMITED NUMBER ARE AVAILABLE AND THE COST IS \$9. PLEASE CONTACT JANE UNDERHILL AT 602-795-3545 OR JANEUNDERHILL@MSN.COM FOR YOUR COPY.

JERRY'S ARTARAMA

The Artists' Supplier & Resource™ Since 1968

4421 S. Rural Rd.
Suite 1-3
Tempe, AZ 85282
480-775-6787



DID YOU KNOW THAT WE HAVE A BRAND
NEW WEBSITE? CHECK IT OUT AT THE
FOLLOWING WEB ADDRESS:
WWW.AZWATERCOLOR.COM

ARIZONA WATERCOLOR ASSOCIATION

ARIZONA WATERCOLOR ASSOCIATION
WWW.AZWATERCOLOR.COM
WORKSHOP REGISTRATION FORM

NAME: _____ DATE: _____
EMAIL: _____ MEMBER : YES NO
ADDRESS: _____ CITY _____
STATE _____ ZIP _____
HOME PHONE: _____ - _____ - _____ CELL PHONE: _____ - _____ - _____

PLEASE COMPLETE FORM AND MAIL WITH YOUR CHECK PAYABLE TO AZ WATERCOLOR TO THE
APPROPRIATE CHAIRPERSON:

**JUROR WORKSHOPS ARE HELD AT THE ARIZONA
ARTISTS GUILD BUILDING 9 AM – 4 PM
18411 N 7TH AVE, PHOENIX, AZ 85023**

CONTACT:

MAUREEN MCGUIRE H: 602-277-0167
924 E. BETHANY HOME RD.
PHOENIX, AZ 85014
MMCGUIRE@FASTQ.COM C: 602-361-3354

1-DAY: \$75 MEMBERS \$90 NON-MEMBERS
3-DAY: \$235 MEMBERS \$275 NON-MEMBERS

FALL JUROR'S WORKSHOP: CARL PURCELL

- 1-DAY OCTOBER 13, 2012
- 3-DAY OCTOBER 10, 11, 12

SPRING JUROR'S WORKSHOP:

JEANNIE MCGUIRE

- 1-DAY APRIL 13, 2013
- 3-DAY APRIL 10, 11, 12

TOTAL AMOUNT \$ _____ CHECK# _____

**MEMBER WORKSHOPS ARE HELD IN THE
PATIO ROOM AT THE CHURCH OF THE
BEATITUDES 9 AM – 4 PM
555 W GLENDALE AVE, PHOENIX, AZ 85021**

CONTACT:

LINDA SCHOOLEY 623-388-6255
18213 W. WEATHERBY DR.
SURPRISE, AZ 85374
LVSCHOOLEY@COX.NET

\$40 MEMBERS \$50 NON-MEMBERS

- NOVEMBER 10, 2012 HAROLD RAPP
- JANUARY 12, 2013 KIM JOHNSON
- FEBRUARY 16, 2013 JOANN MATHEWS
- MARCH 16, 2013 GAYLA BONNELL

MEMBER WORKSHOP MONTH: _____

TOTAL AMOUNT \$ _____ CHECK# _____

SAVE THE DATES!!

The Arizona Watercolor Association Board Meetings start promptly at 5:15 PM at the Church of the Beatitudes Youth Center on Second Thursday Evenings of Each Month.

Fun Table 7:00 P.M.

Meeting 7:30 P.M. to 9:30 P.M.

Member Workshops:

October 11, 2012	Carl Purcell
November 10, 2012	Harold Rapp
January 12, 2013	Kim Johnson
February 16, 2013	JoAnn Matthews
March 16, 2013	Gayla Bonnell

3 Day Workshops:

CARL PURCELL WORKSHOP OCTOBER 10,11,12
MEMBERS \$235; NON-MEMBERS \$275

1 Day Workshop:

CARL PURCELL WORKSHOP SAT. OCTOBER 13
MEMBERS \$75; NON-MEMBERS \$90

MAKE SURE TO RESERVE YOUR PLACE IN THESE WONDERFUL WORKSHOPS!



KIM JOHNSON LENDS HER EXCELLENT KNOWLEDGE

OUR MONTHLY CRITIQUE CORNER, UNDER THE AUSPICES OF KATHRYN TARTAGLIA, HAS BECOME A SOUGHT AFTER EVENT EACH GENERAL MEETING. WHERE ELSE CAN YOU GET THE GENTLE ADVICE FROM LOCAL MASTER ARTIST? KIM IS A NOTEWORTHY CONTRIBUTOR TO THIS VENUE. SHE IS WELL-KNOWN IN THE ART COMMUNITY HAVING RECEIVED HER BA FROM AZ STATE UNIVERSITY AND CONTINUING ART INSTRUCTION FROM BILL LUNDQUIST, TED NUTTALL AND CHARLES REID. KIM IS A MOST POPULAR INSTRUCTOR TEACHING CLASSES IN WATERCOLOR AND DRAWING. SHE HOLDS NUMEROUS SIGNATURE TITLES THRU-OUT THE UNITED STATES. HER WORK WILL BE FEATURED IN 2014 AND 2013 SPLASH MAGAZINE. SHE HAS ALSO APPEARED IN 2010 MARCH ISSUE OF SOUTHWEST ART AND THE 2008 ISSUE OF THE WATERCOLOR MAGAZINE.

KIM'S EXCEPTIONAL TALENTS AND ABILITY TO PUT ONE AT EASE AND GIVE CREDIBLE ADVICE WILL BE ON DISPLAY ON OCTOBER 11TH DURING OUR GENERAL MEETING OF AWA. PLEASE MAKE A CHOICE TO BE IN THE COMPANY OF THIS FINE ARTIST AND BRING IN A PAINTING TO BE DISCUSSED WITH KIM. HER EXCELLENT KNOWLEDGE WILL ASTOUND!!

AWA 2012 FALL MEMBERSHIP EXHIBITION

HOW EXCITING! WE RECEIVED A TOTAL OF 212 PAINTINGS FROM 86 ARTISTS FOR THE AWA 2012 FALL MEMBERSHIP EXHIBITION. THE RANGE OF SUBJECT MATTER WAS SIMPLY AMAZING, AND I WANT TO THANK EVERY ARTIST WHO ENTERED FOR MAKING A RATHER HECTIC JOB REWARDING SIMPLY BECAUSE IT WAS SUCH A PLEASURE TO VIEW YOUR WORK. THE CD IS BEING REVIEWED BY CARL PURCELL AND I LOOK FORWARD TO NOTIFYING YOU OF HIS DECISIONS AROUND THE FIRST OF OCTOBER WITH DETAILS FOR THE EXHIBITION. IT WILL BE SO EXCITING TO SEE CARL IN OCTOBER. HE WILL TRAVEL TO THE EXHIBITION AT THE HOME & DESIGN IDEA CENTER DURING HIS VISIT HERE TEACHING ENTHUSIASTIC ARTISTS THE 2 WORKSHOP SESSIONS. AT THAT TIME HE WILL SELECT THE AWARD WINNERS. THE LOCATION IS SIMPLY INCREDIBLE, AND THE AREA FOR THE RECEPTION IS LIGHT AND FESTIVE. BE SURE TO INVITE ALL YOUR FRIENDS AND FAMILY TO ATTEND THE RECEPTION AND AWARDS PRESENTATION ON THURSDAY, OCTOBER 18TH BEGINNING AT 5:30 P.M. THE AWARDS WILL BE PRESENTED AT 7:00 P.M. SO MARK YOUR CALENDARS. I HOPE YOU ALL HAD A PRODUCTIVE SUMMER AND I LOOK FORWARD TO SEEING MANY OF YOU AT THE OCTOBER MEMBERSHIP MEETING ON OCTOBER 13TH. YOU HAVE NO IDEA HOW INSPIRING YOU ALL ARE!

DONNA EASTMAN LIDDLE
 EXHIBITION DIRECTOR



Website: www.azwatercolor.com Email: AWA@azwatercolor.com



General Meetings - Church of the Beatitudes
 555 W. Glendale Avenue
 Phoenix, AZ
 corner of 7th Ave.
 602-264-1221

Oct thru May
 2nd Thursdays of the Month
 Fun Table 7:00pm
 Meeting 7:30pm-9:30pm
 Oct 8, Oct 13 (closed for summer)

Proud Supporter of Arizona Watercolor Association



The Largest Fine Art Supply Retailer in the Southwest
Arizona Art Supply serving artists since 1951

PHOENIX • (602) 264-9514

4025 N. 16th Street
Phoenix, AZ 85016
Fax (602) 264-1009

SCOTTSDALE • (480) 948-0802

10869 N. Scottsdale Road
Scottsdale, AZ 85254

TEMPE • (480) 775-4102

1628 E. Southern
Tempe, AZ 85282

TUCSON • (520) 388-5555

4343 N. Oracle Road
Tucson, AZ 85705
Fax (520) 388-4806

SUN CITY • (623) 974-8200

10659 W. Grand Avenue
Sun City, AZ 85351



First Daniel Smith Extra Fine™ Watercolor Retailer in Arizona

www.arizonaartsupply.com

Where vision meets value.



AWA Website

www.azwatercolor.com

Watch our site for calendar news, show information and now, you will find our archive of newsletters too!

Our Webmaster

Bruce Sink

602-738-8121

BLICK®

800•828•4548 DickBlick.com