

CHEVY TRUCKS  LIKE A ROCK

ASTRO



Chevy Astro. The Most Capable Midsize Van.*

From camping to picking up supplies for the kitchen renovation to putting the boat in at the lake, your life is challenging. Good thing there's Chevy Astro, the most capable midsize van.* It has standard seating for eight, available All-Wheel-Drive, more available cargo space than any SUV and more towing capability than any minivan.† And Astro is from the family of Chevy Trucks, the most dependable, longest-lasting trucks on the road.**

*NOTE: Unless otherwise noted, all claims are based on 2001 model year GM Medium Van segment competitive information and exclude other GM vehicles. †When properly equipped. Excludes other GM vehicles. **Dependability based on longevity: 1981–July 2000 full-line light-duty truck company registrations. Excludes other GM divisions.

Throughout this brochure you'll find invitations to learn more about Astro's features by visiting chevy.com/astrobrochure

The Power And Strength Of Astro.



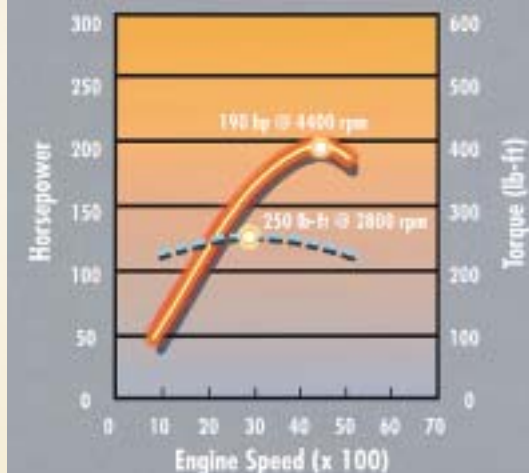
Vortec power is a staple of Chevy Trucks, and Astro is no exception. The standard Vortec 4300 V6 has the largest displacement of any engine in its class, providing the torque you need, when you need it. And because Astro offers more towing capability than any minivan,* you can get more work done. In fact, Astro can tow up to 5,400 lbs. when properly equipped.† And for smooth shifting, all Astro models feature an electronically controlled four-speed automatic transmission. Proven Vortec power and Chevy Truck strength — an Astro one-two punch.

*When properly equipped. †Maximum trailer weight ratings are calculated assuming a base vehicle, except for any option(s) necessary to achieve the rating, plus driver. The weight of other optional equipment, passengers and cargo will reduce the maximum trailer weight your truck can tow. See your Chevy Truck dealer for additional details.

Vortec 4300 V6 Features:

- Sequential Fuel Injection (SFI) helps ensure exact fuel delivery, helping rear-wheel-drive Astro models achieve an estimated MPG of 15 city, 20 highway.*
- The Powertrain Control Module (PCM) helps to ensure that the engine and transmission are working in harmony.
- Vortec engines can travel up to 100,000 miles before the platinum-tipped spark plugs are scheduled for replacement.†

*Based on GM testing. Official EPA estimates not yet available.
†Maintenance needs vary with different uses and driving conditions. See the Owner's Manual for more information.



Vortec 4300 V6 Engine

The standard Vortec 4300 V6 produces 190 horsepower at 4400 rpm and 250 lb.-ft. of torque at a low 2800 rpm. Just the power and torque needed to get your heavy loads moving.

For Astro towing and hauling information, visit chevy.com/astrobrochure

Tow/Haul Mode

When activated, a standard Tow/Haul mode produces a more aggressive shift pattern for the automatic transmission, greatly enhancing Astro's trailering ability.



The Power And Strength Of Astro.



Astro Trailering Features:

- Standard Vortec 4300 V6 engine – the largest displacement in its class.
- Flat torque curve for excellent towing capability.
- Engine and transmission oil coolers.
- Tow/Haul mode.
- An available Heavy-Duty Trailering Special Equipment Package includes a weight-distributing hitch platform and eight-lead wiring harness that get you trailer-ready.

NOTE: Your vehicle may require additional special equipment to tow the maximum trailer weights or attain the Gross Combination Weight Ratings (GCWRs) listed here. The weight-carrying hitch limit for Astro Passenger Van models is a 2,000-lb. trailer with 200-lb. tongue weight. A weight-distributing hitch and sway control is required with trailer weights over 2,000 lbs.

TRAILERING DATA

VORTEC 4300 V6 ENGINE/AUTOMATIC TRANSMISSION		
MODEL	MAX. TRAILER WEIGHT	REQ. AXLE RATIO
Astro	4900	3.42
	5400	3.73
Astro All-Wheel-Drive	4700	3.42
	5200	3.73

NOTE: Maximum trailer weight ratings are calculated assuming a base vehicle, except for any option(s) necessary to achieve the rating, plus driver. The weight of other optional equipment, passengers and cargo will reduce the maximum trailer weight your truck can tow. See your Chevy Truck dealer for additional details.

• Trailer tongue weight should be 10 to 15 percent of the total loaded trailer weight (up to 750 lbs.). The addition of trailer tongue weight cannot cause vehicle weights to exceed the Rear Gross Axle Weight Rating (RGAWR) or Gross Vehicle Weight Rating (GVWR). These ratings can be found on the certification label located on the driver door or door frame. • Base cooling system includes all content required to attain maximum trailer rating. No optional cooling equipment available. • Z82 Heavy-Duty Trailering Special Equipment Package includes a weight-distributing hitch platform and an eight-wire trailer wiring harness.

NOTE: The vehicle owner is responsible for obtaining the hitch ball, a hitch of the proper size, type and capacity, and other appropriate equipment required to safely tow both the trailer and the load that will be towed.

GROSS COMBINATION WEIGHT RATINGS

USING GCWRs TO DETERMINE THE REAR AXLE RATIO.

Perhaps you prefer to use GCWRs to determine the power-train you will require to tow a specific trailer with your Astro. The chart below shows the maximum allowable GCWR based on all available Astro engine and rear axle ratio combinations with the standard automatic transmission. The GCWR includes the total loaded weight of both Astro and the trailer.

GCWR (LBS.)	ENGINE	AXLE RATIO
9500	Vortec 4300 V6	3.42
10,000	Vortec 4300 V6	3.73

NOTE: Requires optional Trailering Package (RPO Z82). Model availability of the above driveline combinations must be verified by your Chevrolet dealer for correct emissions equipment.

Trailering Basics

Towing a trailer involves all major vehicle systems of your Chevy Truck, including powertrain, steering, suspension and brake systems. Easy and safe trailering requires a properly equipped vehicle, additional trailering equipment and appropriate trailer. It also requires loading both the vehicle and trailer properly, using safe driving techniques, meeting regional legal requirements and following break-in and maintenance schedules. You are responsible for being sure that you have the appropriate equipment and hitch for your specific trailering situation. If you plan to tow a trailer, consult your Owner's Manual, speak to a trailering expert at your Chevrolet dealership or visit our web site: chevy.com. The charts on the left and above will assist in determining how to best equip your Chevy Truck for trailering. To help you understand the charts, consider these trailering factors:

Torque

Indicates the strength of the engine. Low-end torque reflects how much force is generated to get your vehicle moving.

Horsepower

Indicates how much work the engine does at a certain engine speed. At mid- to high-engine rpm, it's what keeps you moving at highway speeds.

Axle Ratio

Along with your vehicle's transmission gears, a higher rear axle ratio contributes to how much available torque and horsepower (mechanical leverage) can be applied to the drive wheels for launch and uphill performance. Higher rear axle ratios, however, sacrifice fuel economy when not trailering.

Ball Hitch Trailering

There are two types of ball hitches. A weight-carrying hitch consists of a ball and coupler with no means to distribute the hitch weight. It is used primarily for lightweight trailers. Heavier trailers, however, require a weight-distributing hitch, which uses spring bars to transfer some of the hitch weight forward onto the tow vehicle's front axle and rearward onto the trailer's axle(s).

RGAWR And GVWR

Addition of trailer hitch weight cannot cause vehicle weights to exceed the Rear Gross Axle Weight Rating (RGAWR) or Gross Vehicle Weight Rating (GVWR). These ratings can be found on the certification label located on the driver door or door frame.

GCWR

The Gross Combination Weight Rating (GCWR) is the total allowable weight of the completely loaded vehicle and trailer, including any passengers, cargo, equipment and conversion. A properly equipped tow vehicle and trailer at the maximum GCWR should be able to accelerate and merge with traffic, climb typical interstate grades at highway speeds, handle the combination on most road surfaces, and stop adequately within a reasonable distance. The GCWR for your vehicle should not be exceeded.

Maximum Trailer Rating

This rating is determined by subtracting the tow vehicle's weight (curb weight) from the GCWR. When a base vehicle (curb) weight is used, additional passenger, equipment and cargo weight must be added and will reduce the maximum trailer rating.

Trailering Cautions

NOTE: Please read this Trailering Caution safety information before trailering with your new vehicle. The safety steps described here are by no means the only precautions to be taken when trailering. See the Owner's Manual for the Chevy Truck of your choice for additional guidelines and trailering tips.

• If you don't use the correct equipment and drive properly, you can lose control of your vehicle when you pull a trailer. For example, if the trailer is too heavy, your vehicle's brakes may be less effective. You and your passengers could be seriously injured. Pull a trailer only after taking the following steps:

Trailer Brakes

If your trailer weighs more than 1,000 lbs. loaded, then it must have its own adequate brakes. Be sure to read and follow the instructions for the trailer brake controller so that it is installed, adjusted and maintained properly. Don't tap into your vehicle's brake system if the trailer's brake system will use more than 0.02 cu. in. of fluid from your vehicle's master cylinder. If it does, neither braking system will work well. You could even lose your vehicle brakes.

• The trailer brake parts must be able to take 3,000 psi of pressure. If not, the trailer brake system must not be used with your vehicle. If everything checks out thus far, have a qualified individual make the brake fluid tap at the port on the master cylinder that sends fluid to the rear brakes. Don't use copper tubing because it will bend and ultimately break. Use only double-walled steel brake tubing.

Hitches

It's important to have the correct hitch equipment. Crosswinds, large trucks going by and rough roads are just a few of the reasons why you'll need the right hitch. Here are some rules to follow: If you'll be towing a trailer that, when loaded, will weigh more than 2,000 lbs., be sure to use a frame-mounted, weight-distributing hitch and sway control of the proper size. The equipment is very important for proper vehicle loading and good handling when you're driving. If you have to make any holes in the body of your vehicle to install a trailer hitch, be sure to seal the holes if you ever remove the hitch. If they're not sealed, dirt, water and deadly carbon monoxide from the exhaust can get into your vehicle.

Astro LT. Always Ready For Adventure.



To see a 360-degree view of Astro LT, visit chevy.com/astrobrochure

Astro LT. Spacious Accommodations.



To play the interactive Pack The Astro game, visit chevy.com/astrobrochure



Comfort and room. Astro LT provides your family with both, thanks to a host of comfort and convenience features. Special Cloth seats provide room for up to eight and include reclining seatbacks for rear passengers. Leather seating surfaces are optional. And the sliding passenger-side door and rear Dutch doors make loading and unloading a breeze. You and your family will travel comfortably with Astro LT.

HomeLink Transmitter

The HomeLink transmitter, integrated into the overhead console, lets you combine programming for up to three electronically controlled items, like the garage door opener, into one easy-to-use system.



Astro LT Select Features:

- Special Cloth seating for eight.
- High-back reclining front seats with adjustable head restraints.
- Front and rear air conditioning.
- HomeLink transmitter.
- Six-way power driver seat.
- Leather-wrapped steering wheel.
- AM/FM stereo with cassette and CD players.
- Rear Dutch doors.
- Brushed-aluminum wheels.
- Available Special Leather seating surfaces.

Center-Row Audio Controls

Astro LT includes center-row audio controls and dual headphone jacks that let center-row passengers listen to a different audio source — at a different volume level — than the front-seat passengers (headphones are not included).



10 FOR MORE INFORMATION, VISIT chevy.com

Astro LT interior in Medium Gray with available seven-passenger seating, available Special Leather seating surfaces and rear-row armrest folded forward.

Astro LS. All Work. All Play.



There's more information
about Astro LS features at
chevy.com/astrobrochure

Astro LS. Surprising Capability. Surprising Value.

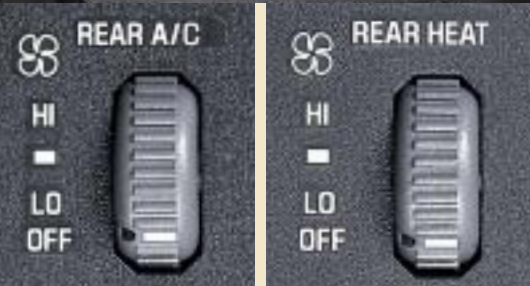


Astro LS features and specifications can be seen by visiting chevy.com/astrobrochure

Astro LS interior in Medium Gray.

With an impressive list of standard equipment, Astro LS is a great value.

And with more available cargo space than any SUV, seating for eight and available All-Wheel-Drive, comfort and capability don't have to come at a premium in an Astro LS.



Rear Air/Heat

While air conditioning is standard on all Astro models, rear air conditioning and heat are also available, helping to make sure all passengers are comfortable during the trip, regardless of the outside temperature.

Astro LS Standard Features:

- Custom Cloth seating for eight.
- Power door locks, windows and mirrors.
- Cruise control and Tilt-Wheel steering column.
- AM/FM stereo with CD player.
- Remote Keyless Entry.
- Rear cargo net.
- Front and cargo-area auxiliary power outlets.
- Deep-tinted window glass.
- Luggage carrier.



Center Console Storage

The center console provides ample storage room for smaller items and is also home to a lighted glove box, a map net on the passenger side and two cup holders.

Power Outlets

Astro models come standard with three auxiliary power outlets: one located in the cargo area and two in the front console. They are perfect for powering up electronic accessories or camping equipment.



Capable Family Transportation.

Preparing for vacation can be stressful. Picking the right conversion van shouldn't be. Chevy Astro is designed with a strong foundation — engineered from the start to be right for upfitting with luxury amenities from your favorite conversion company. And for enhanced capability, Astro vans upfitted for conversion can be equipped with available All-Wheel-Drive, a feature not offered on most minivans. Chevy Astro — the right choice for family vacation transportation.



Available Conversion Package (YF7) Features:

- Uplevel grille with chrome accents.
- AM/FM stereo with CD player.
- Power windows, door locks and mirrors.
- Cruise control and Tilt-Wheel steering column.
- 105-amp alternator.
- Remote Keyless Entry.
- Leather-wrapped steering wheel.
- Rear heater capability.



Flip-Down Video Screen

Rear-seat passengers can watch their favorite video when Chevy Astro is upfitted with an overhead flip-down, flat-screen video monitor (from an independent supplier). Once the video is over, simply fold the screen up and out of the way.

For an approved list of Astro conversion upfitters, go to chevy.com/astrobrochure

Chevy Astro AWD in Dark Carmine Red Metallic with conversion by an independent supplier.

***NOTE:** The vehicle shown has been altered or upfitted with equipment supplied to Chevrolet by an independent supplier. Chevrolet is not responsible for the safety or quality of design features, materials or workmanship of any alterations by such a supplier. See page 23 for further information about alterations and warranties.

Astro Versatility.

Whether you're traveling to the amusement park with the family or running errands around town, you'll appreciate the wide array of seating configurations and the most available cargo space of any midsize van. Just look at some of the ways Astro can meet your people- and cargo-carrying needs.



Astro LT shown with optional seven-passenger seating and optional Special Leather seating surfaces with rear-row bench seat removed for 104.4 cu. ft. of cargo space.



Astro LT shown with standard eight-passenger seating and optional Special Leather seating surfaces with rear-row bench seat removed.



Astro LT shown with optional Special Leather seating surfaces, standard rear Dutch doors and center and rear-row seats removed for 170.4 cu. ft. of cargo space.



Astro LS shown with standard eight-passenger seating with rear-row bench seat removed.



Astro LS shown with standard eight-passenger seating with rear-row bench seat removed and center-row bench seat folded forward. Shown with available rear Dutch doors.

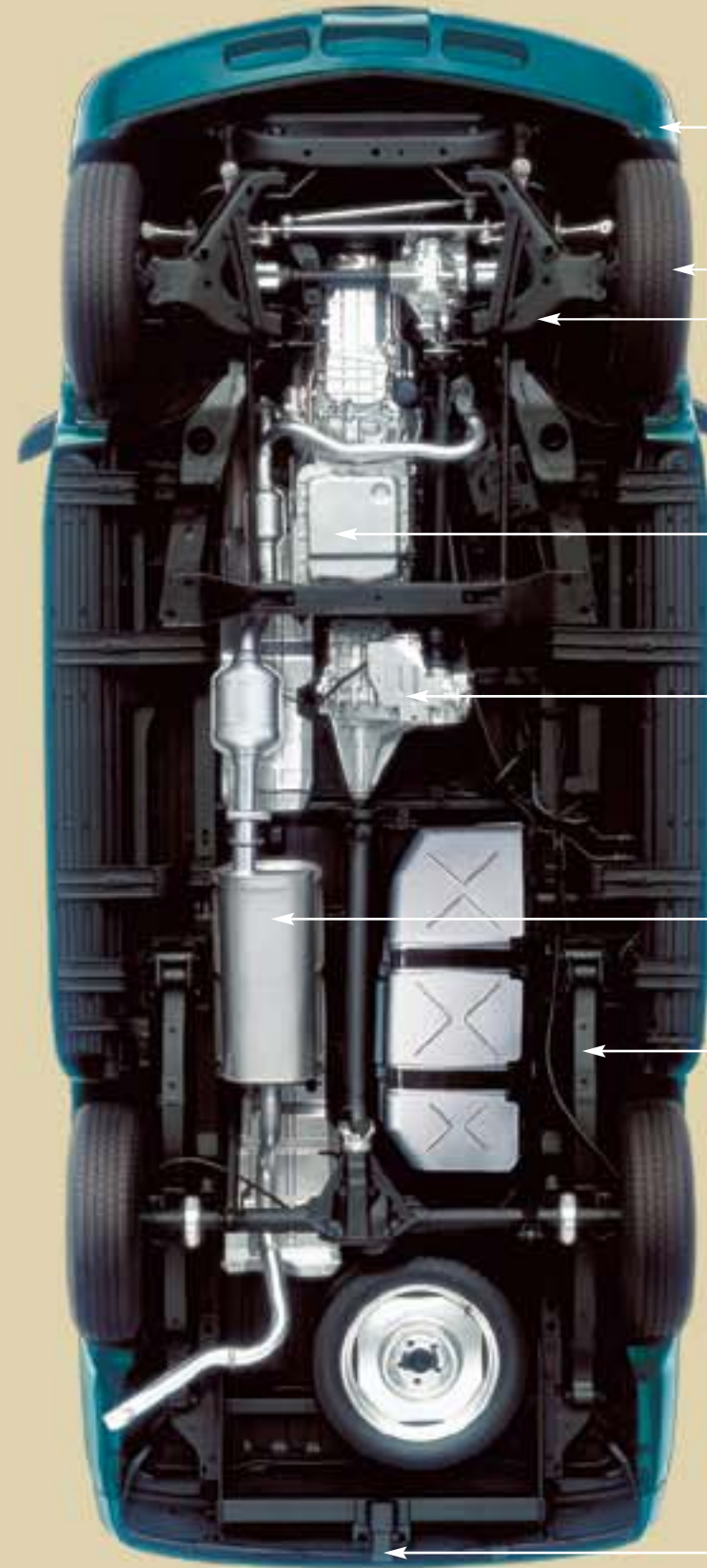


Astro LS shown with standard eight-passenger seating with rear-row bench seat folded forward.

Astro LS in Cadet Blue Metallic with standard seating for eight and available rear Dutch doors.

You can learn more about the seating configurations of Astro by visiting chevy.com/astrobrochure

Astro Strength.



Crush Zones

Front and rear structures are designed to deform in a controlled manner to help absorb energy during a crash.

Four-Wheel Antilock Brake System (ABS)

Standard four-wheel ABS helps the driver maintain steering control by reducing wheel lockup while braking hard on most slippery surfaces.

Independent Front Suspension

A rugged and reliable independent front suspension features a coil spring design on rear-wheel-drive models and torsion bars on All-Wheel-Drive models.

Vortec Engine

The proven Vortec 4300 V6 engine has a flat torque curve, allowing Astro to effectively pass, haul and tow.

All-Wheel-Drive

An available All-Wheel-Drive system operates normally in rear-wheel drive until it senses rear-wheel slippage, then automatically transfers torque to the front axle for added traction when needed.

Stainless-Steel Exhaust System

Astro features a stainless-steel exhaust system with corrosion-resistant aluminized stainless steel rearward of the catalytic converter.

Variable-Rate Steel Multileaf Rear Springs

Specially designed rear springs engage as load weight increases, helping provide additional support and a solid ride to all passengers.

Towing Power

Rear-wheel-drive Astro models can tow up to 5,400 lbs.* and out-tow all front-wheel-drive minivans — some by a ton or more.* Astro All-Wheel-Drive can tow up to 5,200 lbs.*

*Maximum trailer ratings are calculated assuming a base vehicle, except for any option(s) necessary to achieve the rating, plus driver. The weight of other optional equipment, passengers and cargo will reduce the maximum trailer weight your truck can tow. See your Chevy Truck dealer for additional details.

Astro LT AWD in Teal Blue Metallic with available features.

A Matter Of Security.



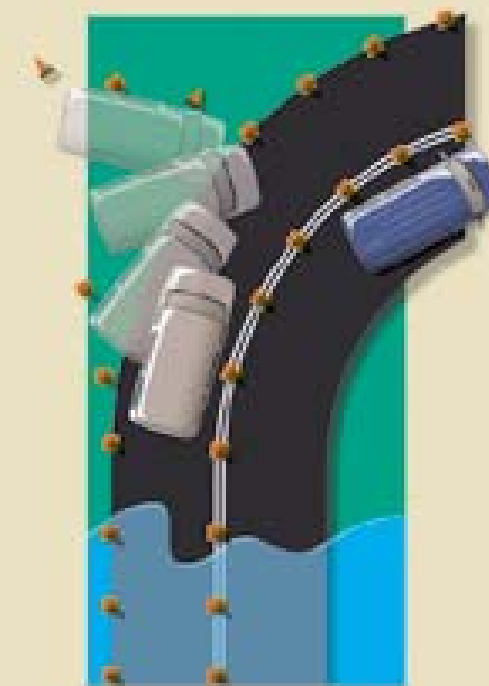
Because safety and security are so important to your family, Astro features a comprehensive system to help you feel secure while you're traveling. Standard driver and front-passenger air bags,* four-wheel ABS, side-door beams and available All-Wheel-Drive are just some of the many features in Astro designed to give you peace of mind. Chevy Astro. It's the midsize van that's serious about safety and security.

*A Note On Child Safety:

Always use safety belts and proper child restraints, even with air bags. Children are safer when properly secured in a rear seat. Never place a rear-facing infant restraint in the front seat of any vehicle equipped with an active air bag. See the Owner's Manual and child safety seat instructions for more safety information.

Four-Wheel Antilock Brake System

Standard four-wheel ABS is designed to help the driver maintain steering control by reducing wheel lockup while braking hard on most slippery surfaces.

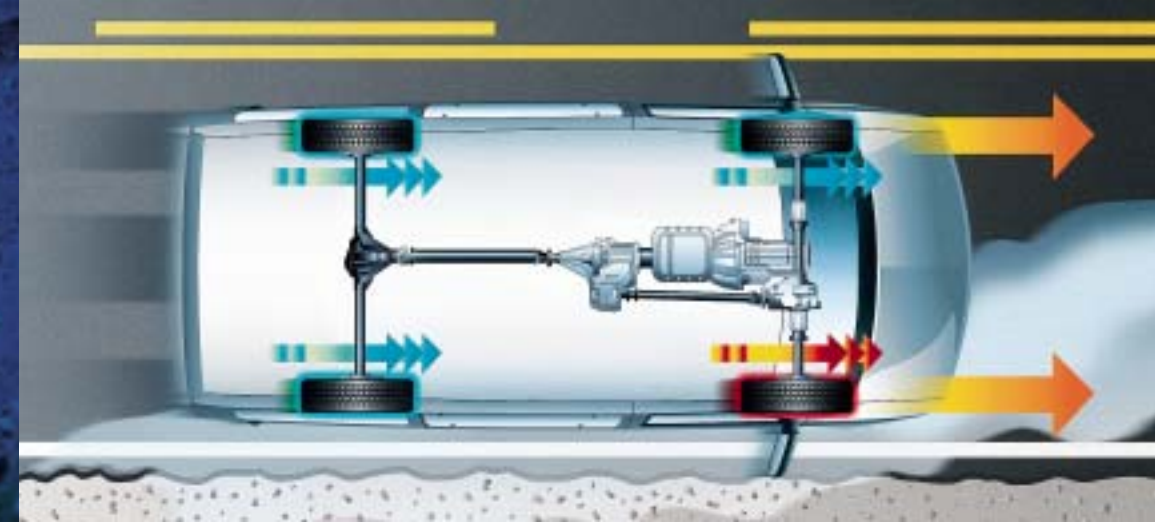


Astro Safety And Security Features:

- Driver and front-passenger air bags.*
- Center-row seat-mounted top-tether anchors for child safety restraints.*
- Available All-Wheel-Drive.
- Daytime Running Lamps.
- Four-wheel antilock brakes.
- Remote Keyless Entry.
- Side-door beams.
- Battery-rundown protection.

All-Wheel-Drive Traction

Available All-Wheel-Drive features excellent road-gripping traction in all kinds of weather that bolsters driver control. To maximize the available traction, the system automatically transfers power away from the one or more wheels that slip to the wheels with the most traction.



For more information on Astro All-Wheel-Drive, visit chevy.com/astrobrochure

You Never Travel Alone.

Chevy Trucks are the most dependable, longest-lasting trucks on the road* — sold and serviced by the largest dealer network in the USA. When you buy a Chevy Truck, you also get a rock-solid, comprehensive owner protection plan that will be there for you from the moment you take delivery. The plan includes:

- **New Vehicle Limited Warranty†**
- **24-Hour Roadside Assistance**
- **Courtesy Transportation**

It's an owner protection plan you can believe in. Your Chevrolet dealer has all the details.

*Dependability based on longevity: 1981–July 2000 full-line light-duty truck company registrations. Excludes other GM divisions. †3 years/36,000 miles (whichever comes first). See your Chevrolet dealer for details.



24-HOUR ROADSIDE ASSISTANCE
Call **1-800-CHEV-USA** toll free anytime during the warranty period. Towing and basic technical advice come with the Basic Care package. Courtesy Care provides additional features* including locksmith services, flat tire changing, fuel delivery, non-warranty towing and jump starts. Some services will incur costs. Chevrolet reserves the right to modify or discontinue Basic Care and Courtesy Care at any time.

*During the term of the New Vehicle Limited Warranty.



FOR MORE INFORMATION ON 2002 CHEVROLET CAR OR TRUCK PRODUCTS, call **1-800-950-2438** or visit us at **chevy.com**

NEW VEHICLE LIMITED WARRANTY
This warranty is for GM vehicles registered in the USA. See your Chevrolet dealer for terms and conditions.

Covered for 3 years/36,000 miles (whichever comes first):

- The complete vehicle
- Tires
- Towing to your nearest Chevrolet dealership
- Cosmetic corrosion resulting from defects
- Repairs made to correct any vehicle defect
- No charge for most warranty repairs

Covered for 6 years/100,000 miles (whichever comes first):

- Rust-through corrosion



FROM DAY ONE ...

The vehicle is checklist-ready for you to drive away, and a full orientation awaits you on everything about your new Chevy Astro.



CHEVROLET CUSTOMER ASSISTANCE CENTER

Call **1-800-222-1020** toll free to talk directly to specialists who can handle any product or service concern you may have.



COURTESY TRANSPORTATION

Ask your participating Chevrolet dealer for Courtesy Transportation if you drop your vehicle off for repairs under the New Vehicle Limited Warranty. Also see if you qualify for expense reimbursement and/or vehicle rental. Services vary at election of participating dealer.



Additional Information

Important: A Word About This Brochure

We have tried to make this brochure comprehensive and factual. We reserve the right, however, to make changes at any time, without notice, in prices, colors, materials, equipment specifications, models and availability. Since information may have been updated since the time of printing, please check with your Chevrolet dealer for complete details. Chevrolet reserves the right to lengthen or shorten the model year for any product for any reason, or to start and end model years at different times.

SmartLease By GMAC

For information about SmartLease, SmartBuy or any of the other quality GMAC financing options, see your Chevy dealer, call **1-800-32-SMART** or visit our web site at **www.gmacfs.com**

The GM Mobility Program

Chevrolet recognizes the importance of mobility to everyone's life and, therefore, offers financial assistance to persons with disabilities through the General Motors Mobility Program. This program can provide up to \$1,000 reimbursement toward the cost of aftermarket mobility adaptive equipment for drivers or passengers when installed or reinstalled on any eligible purchased or leased new GM vehicle. For details and free resource information, call **1-800-323-9935** (TTY users: **1-800-833-9935**).

Updated Service Information

Chevrolet dealers receive useful service bulletins about Chevrolet products. You can purchase them by calling **1-800-551-4123**.

Assembly

Chevrolts and their components are assembled or produced by different operating units of General Motors, its subsidiaries or suppliers to GM worldwide. We sometimes find it necessary to produce Chevrolts with different or differently sourced components than originally scheduled. Since some options may be unavailable when your vehicle is assembled, we suggest that you verify that your vehicle includes the equipment you ordered or, if there are changes, that they are acceptable to you.

Engines

Chevrolts are equipped with engines produced by different operating units of GM, its subsidiaries or suppliers to GM worldwide.

Rust-Through Corrosion Protection

Chevrolts are designed and built to resist corrosion. All body sheet-metal panels are warranted against rust-through for 6 years/100,000 miles (whichever comes first). Application of additional rust-inhibiting materials is not required and none is recommended. See your Chevrolet dealer for terms of this limited warranty.

An Important Note About Alterations and Warranties

Installations and alterations to the original equipment (or chassis) as distributed by General Motors are not covered by the General Motors New Vehicle Limited Warranty. The special body company, assembler, equipment installer or upfitter is solely responsible for warranties on the body or equipment and any alterations (or any effect of the alterations) to any of the parts, components, systems or assemblies installed by GM. General Motors is not responsible for the safety or quality of design features, materials, or workmanship of any alterations by such a supplier.

GM Accessories Warranty Information

All GM Official Licensed Products purchased from and/or installed by your GM dealer are covered under the individual accessory manufacturers' warranties, and they are not warranted by General Motors or its dealers. Should any such GM Licensed Product require service, please contact the GM Licensed Product manufacturer identified on the product or its accompanying documentation. If the manufacturer is not so identified, contact your GM dealer to obtain the necessary information.

GM Protection Plan

The GM Protection Plan offers mechanical repair protection in addition to that provided by GM's New Vehicle Limited Warranty. Coverage for vehicle maintenance is also available. Ask your dealer about the GM Protection Plan. Coverage available only in the U.S. and Canada.



Accelerate Your College Savings

GM — along with many other leading companies — has teamed up with Upromise, the revolutionary college savings accelerator that can help you save thousands of dollars for college. When you purchase or lease an eligible new Chevrolet, GM will contribute \$150 into your Upromise college savings account. For complete details on the GM-Upromise program, go to **http://upromise.gm.com**. Enrollment is simple and absolutely free. To receive the \$150 GM contribution, you need to be a Upromise member 30 days before you take delivery of your vehicle.

General Motors, GM, the GM Emblem, Chevrolet, the Chevrolet Emblem, Astro, Blazer, Chevy Express, S-10, Silverado, Suburban, Tahoe, Tracker, TrailBlazer, Delco, PASSlock, Solar-Ray, ETR, and 1-800-CHEV-USA are registered trademarks and Avalanche, Chevy and Vortec are trademarks of the General Motors Corporation. TheftLock is a registered trademark of the Delco Electronics Corporation. GMAC, SmartLease, and SmartBuy are registered service marks of the General Motors Acceptance Corporation. HomeLink is a registered trademark of Johnson Controls, Inc. ©2001 General Motors Corporation. All rights reserved.



General Motors is a proud sponsor of the 2002 Olympic Winter Games. To learn more, visit chevy.com/astrobrochure

Astro LT AWD in Dark Forest Green Metallic and Light Autumnwood Metallic with available features.

Dimensions, Wheels and Seating



WHEELS



Brushed-Aluminum Wheel (15" x 6.5")

Optional with LS trim; included with LT trim Preferred Equipment Group 1SE. Requires P215/75R-15 white outline-lettered tires.



Chrome-Clad Styled-Steel Wheel (15" x 6.5")

Includes bright center cap. Included with LS trim Preferred Equipment Groups 1SC and 1SD. Requires P215/75R-15 blackwall tires.

SEATING CHOICES



Special high-back reclining bucket seat in Neutral with Special Leather seating surfaces.

Medium Gray Leather

Special Leather Seating Surfaces Optional with LT trim.



Special high-back reclining bucket seat in Medium Gray Special Cloth.

Neutral Cloth

Special Cloth Trim Included with LT trim.

COLOR AVAILABILITY

EXTERIOR COLORS	INTERIOR COLORS	
	MEDIUM GRAY	NEUTRAL
Light Autumnwood Metallic		
Medium Cadet Blue Metallic ¹	■	■
Teal Blue Metallic	■	■
Medium Bronzest Metallic ¹	■	■
Dark Carmine Red Metallic	■	■
Medium Charcoal Gray Metallic ¹	■	■
Dark Forest Green Metallic ¹	■	■
Light Carmine Red Metallic ¹	■	■
Light Pewter Metallic	■	■
Ivory White	■	■

¹ Colors only available with Two-Tone appearance.



High-back reclining bucket seat in Medium Gray Custom Cloth.

Neutral Cloth

Custom Cloth Trim Included with LS trim.

Exterior Features

PREFERRED EQUIPMENT GROUPS (PEG)	LS 1SC	LS 1SD	LT 1SE
LS decor	■	■	
Standard body with dual rear doors ¹	■		
Dutch doors with rear-window defogger and wiper/washer		■	■
8-passenger seating arrangement	■	■	■ ²
Cargo convenience net	■	■	■
Tilt-Wheel steering column	■	■	■
Cruise control	■	■	■
Power windows and power door locks	■	■	■
Deep-tinted glass	■	■	■
Power mirrors	■	■	■
Front-seat passenger storage compartment	■	■	■
AM/FM stereo with seek-scan and CD player	■		
AM/FM stereo with seek-scan, cassette and CD players		■	■
Luggage carrier	■	■	■
Remote Keyless Entry	■	■	■
Overhead console (with electronics)	■	■	■
Styled-steel wheels, chrome-clad ³	■		
6-way power driver seat		■	■
Front air conditioning	■	■	■
Rear heat and air conditioning		■	■
LT decor			■
Brushed-aluminum wheels			■
Leather-wrapped steering wheel			■
HomeLink transmitter			■
Rear-seat audio controls and jacks ⁴			■

■ Included in Preferred Equipment Group.

¹ May substitute Dutch doors. ² May substitute seven-passenger seating. ³ May upgrade to brushed-aluminum wheels with the 1SD package only. ⁴ Headphones not included.

NOTE: Some individually available options listed may be included in, or be ordered only with, specific Preferred Equipment Groups, special packages or marketing packages. Availability of some equipment may vary by model and series. Some additional ordering restrictions may apply. Please see your salesperson for details.

MODEL SELECTOR	LS	LT
MODEL	GVWR (LBS.)	
Astro Van	5950	S S
Astro Van All-Wheel-Drive	6100	S S

S — Standard. O — Optional. GVWR — Gross Vehicle Weight Rating.

The GM Card® — What Are You Charging Toward?SM

The GM Card rewards you 5% on every credit card purchase, making it the fastest way to save toward the GM car or truck of your dreams. For information or to apply for the GM Card, call **1-800-8GM-CARD** or visit our web site at www.gmcard.com

EXTERIOR FEATURES	LS	LT
Body panels, two-sided galvanized steel (except the roof, where it's not needed)	S	S
Bumpers, front and rear: color-keyed, with combination rear top-step surface	S	S
Cladding: lower body-side, color-keyed	S	S
Daytime Running Lamps (DRL) with Automatic Exterior Lamp Control	S	S
Doors		
— sliding side door; passenger-side: includes child security lock feature	S	S
— dual rear-load doors	S	—
— Dutch doors (rear): include liftglass, rear-window wiper/washer with delay feature and rear-window defogger (included with optional PEG 1SD on LS)	O	S
Flash-to-pass headlamp feature	S	S
Grille, molded with chrome accents	S	S
Headlamps: composite, halogen	S	S
Luggage carrier: black-painted	S	S
Mirrors, dual foldaway, electric remote	S	S
Running boards	O ¹	O ¹
Wipers, windshield: with washer and intermittent feature	S	S

CHASSIS FEATURES	LS	LT
Battery-rundown protection	S	S
Brakes:		
— front disc/rear drum: with power assist	S	S
— antilock brake system (ABS), 4-wheel	S	S
Cold Climate Package: includes engine-block heater and coolant protection	O	O
Differential, locking: rear	O	O
Engine and transmission oil coolers	S	S
Fuel tank: 27-gal. capacity (approx.)	S	S
Retained accessory power	S	S
Stainless-steel exhaust system; aluminized stainless steel rear of converter	S	S
Steering, power: variable	S	S
Tow/Haul mode	S	S
Trailer Special Equipment Package, heavy-duty: includes weight-distributing hitch platform and 8-lead wiring harness	O	O

TIRES	LS	LT
P215/75R-15 blackwall all-season steel-belted radials	S	—
P215/75R-15 white outline-lettered all-season steel-belted radials (requires PEG 1SD on LS, requires brushed-aluminum wheels)	O	S
Tire, compact spare: on steel wheel (mounted under floor at rear)	S	S

S — Standard with trim level. O — Optional.

¹ See your dealer for additional availability and restriction information.

NOTE: The Astro trim features indicated reflect only a portion of the total content of each trim level. See your Chevy Truck dealer for complete listings. For Astro Cargo Van information, see the 2002 Chevrolet Commercial Vans brochure or your Chevy Truck dealer.

You can build your own Chevy Astro by visiting chevy.com/astrobrochure

Interior Features

SEATING	LS	LT
8-passenger seating arrangement with Custom Cloth trim, includes:		
• front high-back reclining adjustable bucket seats with head restraints, adjustable driver lumbar support, inboard armrests and seatback map pockets		—
• center- and rear-row removable 3-passenger bench seats with head restraints	S	—
8-passenger seating arrangement with Special Cloth trim, includes:		
• front high-back reclining adjustable bucket seats with adjustable lumbar support, inboard armrests, seatback map pockets and adjustable head restraints		—
• center- and rear-row removable 3-passenger split-folding reclining bench seats with fold-down center armrest/console with convenience tray and cup holders	—	S
— Special Leather seating surfaces	—	O
7-passenger seating arrangement with Special Cloth trim, includes:		
• front high-back reclining bucket seats with adjustable lumbar supports, inboard armrests, seatback map pockets and adjustable head restraints		—
• center-row high-back reclining bucket seats	—	O
• rear-row removable 3-passenger split-folding reclining bench seat with fold-down center armrest/console with convenience tray and cup holders	—	O
— Special Leather seating surfaces with center-row adjustable lumbar supports	—	O
Child safety seat top- tether anchors: second-row outboard seats	S	S
Seat, power driver: 6-way (requires optional PEG 1SD on LS)	O	S
INTERIOR FEATURES	LS	LT
Air bags: driver and front-passenger ¹	S	S
Air conditioning, front	S	S
Air conditioning, rear, includes 105-amp alternator (included with optional PEG 1SD on LS)	O	S
Armrests, LH and RH, molded into door panel	S	S
Cargo convenience net: rear compartment	S	S
Coat hooks: three LH and two RH	S	S
Console, overhead: includes 4 map/reading lights, dome lamp, 2 stowage compartments, garage door opener stowage, electronic compass, outside temperature display and multifunction trip computer	S	S
Convenience Group: power door locks and windows	S	S
Door trim, driver and passenger doors: color-keyed expanded cloth with map pockets, carpet inserts, reflectors and insulation	S	S
Driver lockout protection	S	S
Floor carpeting, full: color-keyed, on wheelhousings and entire load floor	S	S
Floor mats: color-keyed, for all seating areas	S	S
Glass, swing-out window:		
— in sliding side door and left-front quarter-panel	S	S
— Solar-Ray: deep-tinted side and rear windows	S	S
Headliner, full-length: 2-piece, color-keyed foam-backed cloth	S	S
Heater, rear (included with optional PEG 1SD on LS)	O	S
Lighting: delayed illuminated entry		
— stepwell lamps, storage compartment lamp, three dome lamps with front, rear and sliding side door-actuated switches and dome lamp defeat switch	S	S
— reading: dual adjustable, mounted in center-row dome light assembly in addition to the 4 map/reading lights in overhead console	S	S
Locking:		
— single two-sided key operation of ignition, front doors and rear load doors	S	S
— power door locks	S	S
— Remote Keyless Entry with remote panic alarm	S	S

INTERIOR FEATURES (CONTINUED)	LS	LT
Power outlets: auxiliary electric, covered:		
— 2 in convenience console cover (in addition to cigarette lighter)	S	S
— 1 on rear body pillar near cargo-area floor	S	S
Storage provisions:		
• front-seat passenger storage compartment		
• center-row left-hand seat area: includes ashtray, upper storage bin and beverage holder and full-length lower storage bin		
• rear-row left-hand seat area: includes upper storage bin, storage compartment, cup holder and lower corner storage compartment		
• rear-row right-hand seat area: includes upper storage bin, storage compartment and cup holder	S	S
Sunshades, LH and RH, color-keyed cloth with lighted visor vanity mirror, auxiliary visor and extender	S	S
Transmitter: HomeLink 3-channel, programmable	—	S
Turn signal reminder chime	S	S

INSTRUMENT PANEL/CONTROLS	LS	LT
Convenience console, engine cover: with 2 cup holders, cigarette lighter, 2 auxiliary covered electric power outlets, glove box with light and passenger-side map net	S	S
Convenience Group: Tilt-Wheel steering column and cruise control	S	S
Gauges: analog-type: includes speedometer, odometer, trip odometer, fuel level, voltmeter, coolant temperature and oil pressure	S	S

HEATER WITH WINDSHIELD DEFROSTER, FRONT SIDE-WINDOW DEFROGGERS AND REAR-AREA HEAT DUCTS (LOCATED UNDER FRONT SEATS)	LS	LT
PASSlock theft-deterrent system	S	S
Steering wheel with theft-deterrent locking feature:		
— black, 4-spoke	S	—
— black, 4-spoke, leather-wrapped	—	S
Warning tone: headlamps-on	S	S

SOUND SYSTEM BY DELCO ELECTRONICS	LS	LT
AM/FM stereo with CD player: includes auto tone control, speed-compensated volume and TheftLock	S	—
AM/FM stereo with cassette player with search and repeat and CD player: includes auto tone control, speed-compensated volume, CD-in play/radio switching and TheftLock (included with optional PEG 1SD on LS)	O	S
Center-row audio controls ²	O	S

INTERIOR DIMENSIONS (IN.)	
Floor-to-ceiling height	47.2
Cargo floor width at wheelwells	51.6
Load floor length to front seat	98.6

CARGO VOLUME (CU. FT.)	
Center- and rear-row seats in place	41.3
Rear-row seat removed	104.4
Center- and rear-row seats removed	170.4

S — Standard. O — Optional.

¹ Always use safety belts and proper child restraints, even with air bags. Children are safer when properly secured in a rear seat. See the Owner's Manual for more safety information. ² Includes two headphone jacks and two pop-out rotary volume controls. Headphones not included.

NOTE: All Astro Passenger Van stereo sound systems include a Delco Electronics Electronically Tuned Receiver (ETR) AM/FM stereo with seek-scan feature and a digital clock.

NOTE: The Astro trim features indicated reflect only a portion of the total content of each trim level. See your Chevy Truck dealer for complete listings. For Astro Cargo Van information, see the 2002 Chevrolet Commercial Vans brochure or your Chevy Truck dealer.

Exterior Colors



Light Autumnwood Metallic



Medium Charcoal Gray Metallic*



Medium Cadet Blue Metallic*



Dark Forest Green Metallic*



Teal Blue Metallic



Light Carmine Red Metallic*



Medium Bronzest Metallic*



Light Pewter Metallic



Dark Carmine Red Metallic



Ivory White

An Astro two-tone color selector is available at chevy.com/astrobrochure

*Color available only with Two-Tone appearance.

CHEVY TRUCKS LIKE A ROCK



Avalanche



Silverado



Suburban



Tahoe



TrailBlazer



Tracker



Blazer



S-10 Pickup



Astro



Express LT

▶ FOR ADDITIONAL INFORMATION ABOUT CHEVROLET VEHICLES, VISIT CHEVY.COM

AMERICA ONLINE KEYWORD: CHEVY

