

Mystic River Bicycle and Pedestrian Crossing

DCR Public Meeting

Wednesday, February 14, 2018 – 6:30-8:00pm
Edward G. Connolly Center
90 Chelsea Street, Everett, MA



Commonwealth of Massachusetts

Governor

Charles D. Baker

Lieutenant Governor

Karyn E. Polito

Energy and Environmental Secretary

Matthew A. Beaton

Department of Conservation and Recreation Acting Commissioner

Leo Roy

Mayor of Somerville

Joseph Curtatone

Mayor of Everett

Carlo DeMaria

AECOM

dcr
Massachusetts



DCR Mission Statement

*To protect, promote and enhance our
common wealth of natural, cultural
and recreational resources
for the well-being of all.*

Tonight's Meeting - Purpose

- Provide an overview of the conceptual design for the Mystic River Pedestrian and Bicycle Crossing.
- Provide an opportunity for the public to comment on the conceptual design of the bridge.

Project Purpose

Project Purpose

- **Regional Connectivity:** Provide Missing Link in Regional Trail Network
 - Northern Strand across the river to the MBTA
 - North and South along the Mystic River
- Reduce traffic by providing pedestrian and bicycle access
 - Between Everett and Somerville
 - From Somerville to surrounding areas
- Provide Everett access to the MBTA (Assembly Station)

Project Purpose

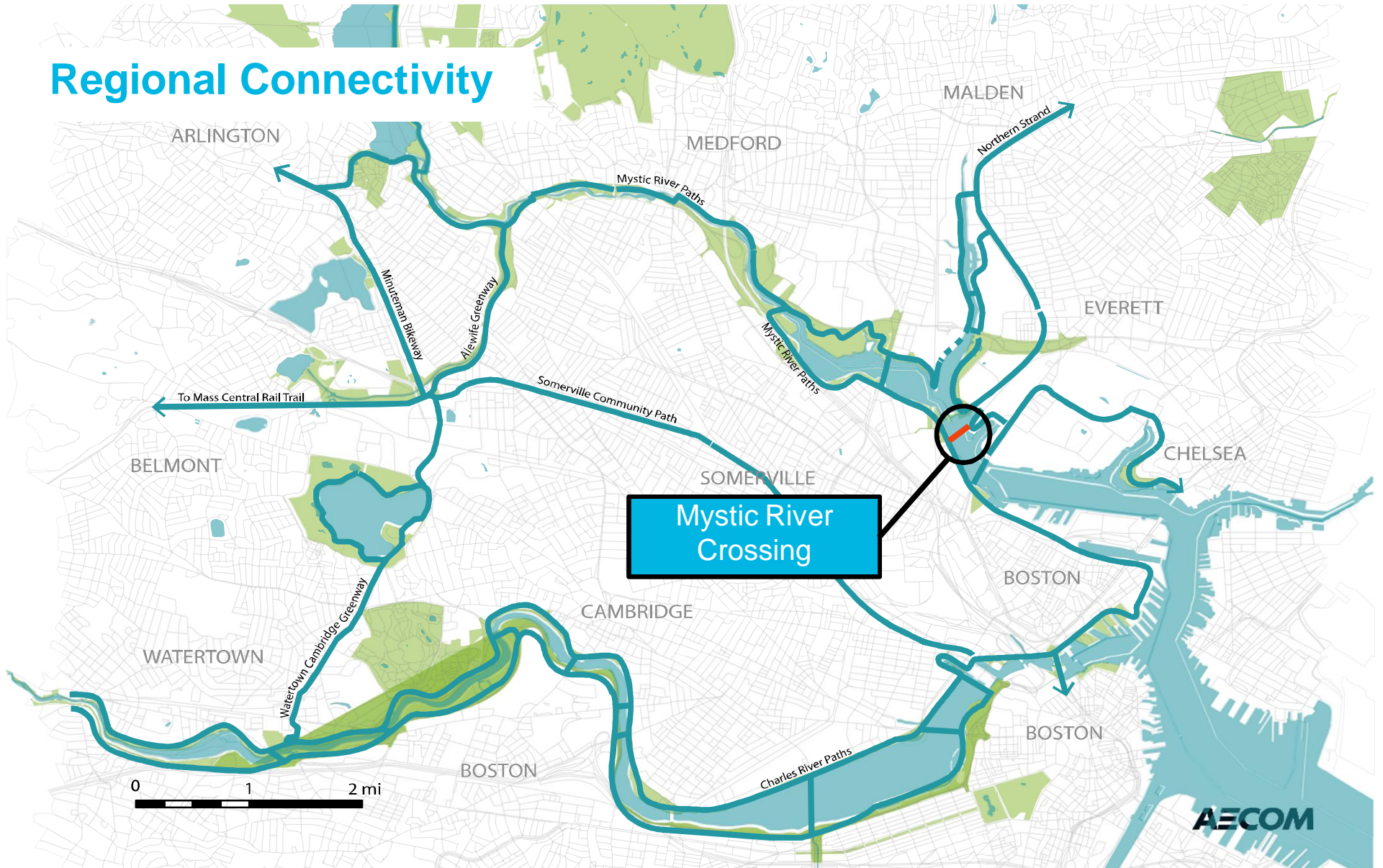
Multiple Planning Studies recommend the Mystic River Crossing

The collage features four main document covers:

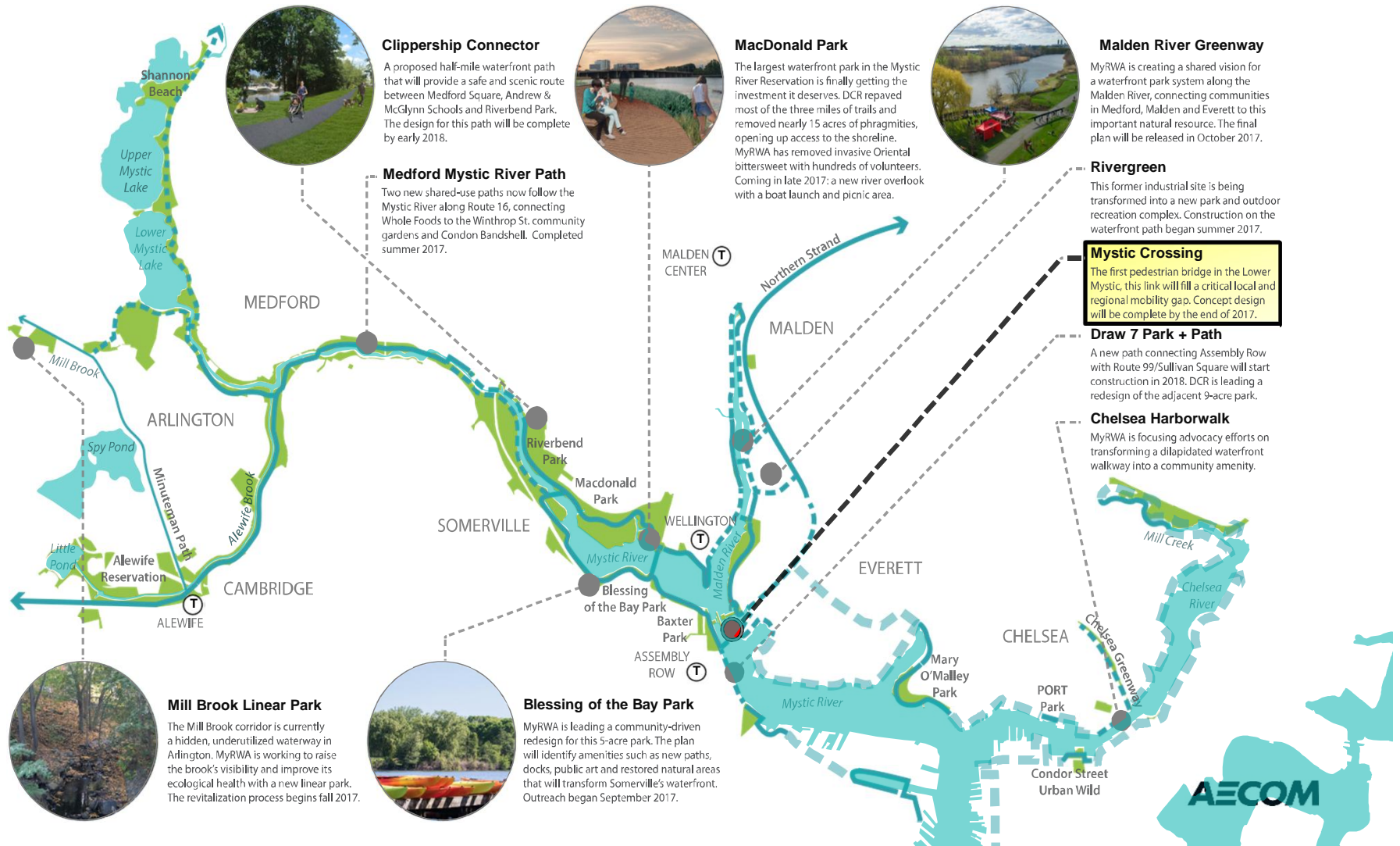
- Sustainable Metro Boston:** Northern Strand Trail Communities Bicycle and Pedestrian Network Plan, July 2013. Prepared for the Massachusetts Department of Conservation & Recreation.
- Bike to the Sea, Inc.:** Connecting Communities with a Trail to the Sea. Includes a photo of a cyclist and a circular logo for the Northern Strand Community Trail.
- MyRWA:** Mystic River Watershed Association. Logo with the text "MyRWA" and "your community • your watershed".
- Lower Broadway District | Everett Master Plan:** Planning for pride, progress and possibilities. February, 2013. Prepared by Sasaki Associates Inc. & GLC Development Resources LLC.

Other visible text includes "Alternatives Analysis", "Bicycle & Pedestrian Crossing of the Mystic River", "Somerville, Everett Massachusetts", and "biketothesea.com".

Regional Connectivity



MYSTIC GREENWAYS PROGRESS



Clippership Connector

A proposed half-mile waterfront path that will provide a safe and scenic route between Medford Square, Andrew & McGlynn Schools and Riverbend Park. The design for this path will be complete by early 2018.



Medford Mystic River Path

Two new shared-use paths now follow the Mystic River along Route 16, connecting Whole Foods to the Winthrop St. community gardens and Condon Bandshell. Completed summer 2017.

MacDonald Park

The largest waterfront park in the Mystic River Reservation is finally getting the investment it deserves. DCR repaved most of the three miles of trails and removed nearly 15 acres of phragmites, opening up access to the shoreline. MyRWA has removed invasive Oriental bittersweet with hundreds of volunteers. Coming in late 2017: a new river overlook with a boat launch and picnic area.



Malden River Greenway

MyRWA is creating a shared vision for a waterfront park system along the Malden River, connecting communities in Medford, Malden and Everett to this important natural resource. The final plan will be released in October 2017.



Rivergreen

This former industrial site is being transformed into a new park and outdoor recreation complex. Construction on the waterfront path began summer 2017.

Mystic Crossing

The first pedestrian bridge in the Lower Mystic, this link will fill a critical local and regional mobility gap. Concept design will be complete by the end of 2017.

Draw 7 Park + Path

A new path connecting Assembly Row with Route 99/Sullivan Square will start construction in 2018. DCR is leading a redesign of the adjacent 9-acre park.

Chelsea Harborwalk

MyRWA is focusing advocacy efforts on transforming a dilapidated waterfront walkway into a community amenity.

Mill Brook Linear Park

The Mill Brook corridor is currently a hidden, underutilized waterway in Arlington. MyRWA is working to raise the brook's visibility and improve its ecological health with a new linear park. The revitalization process begins fall 2017.

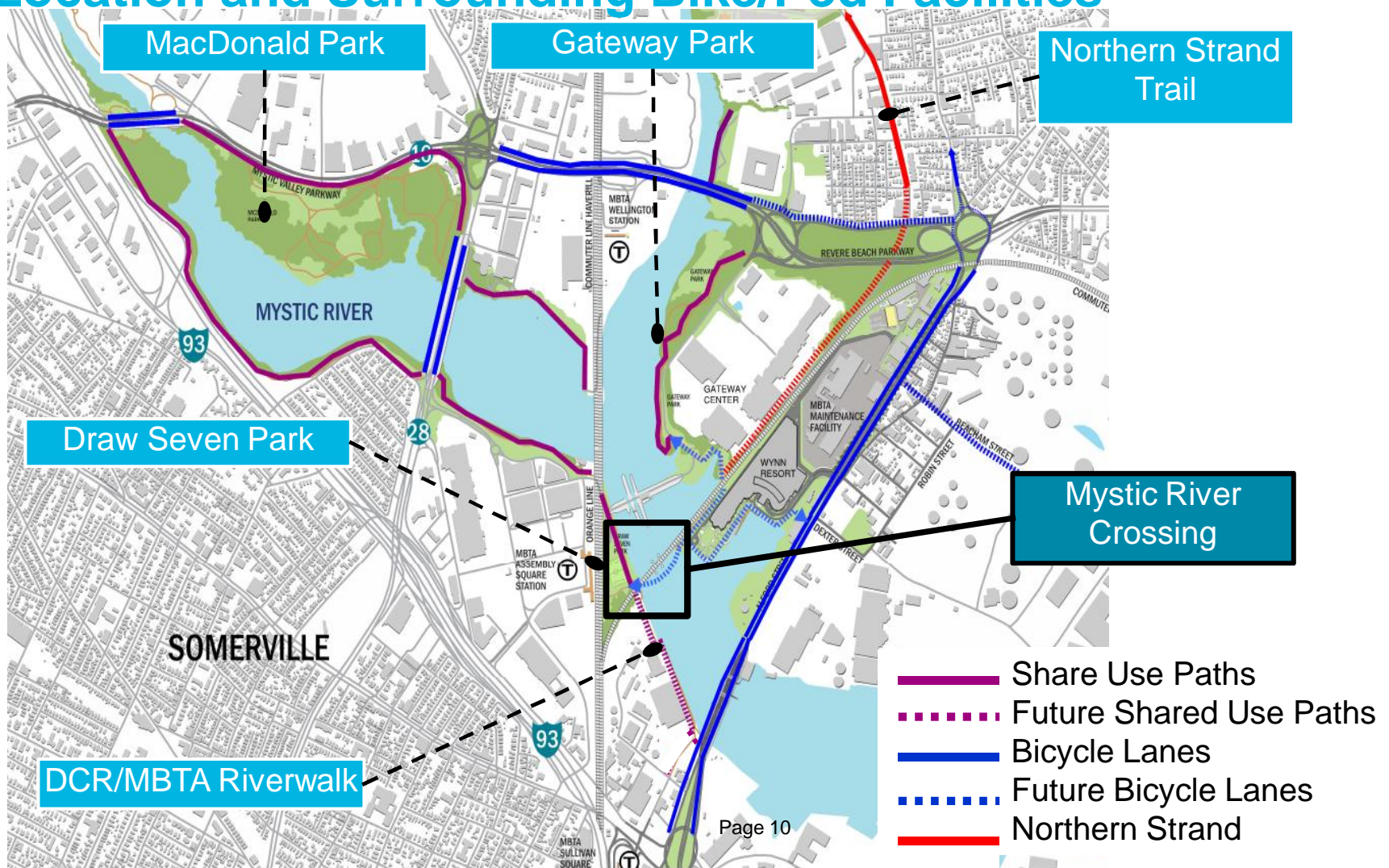


Blessing of the Bay Park

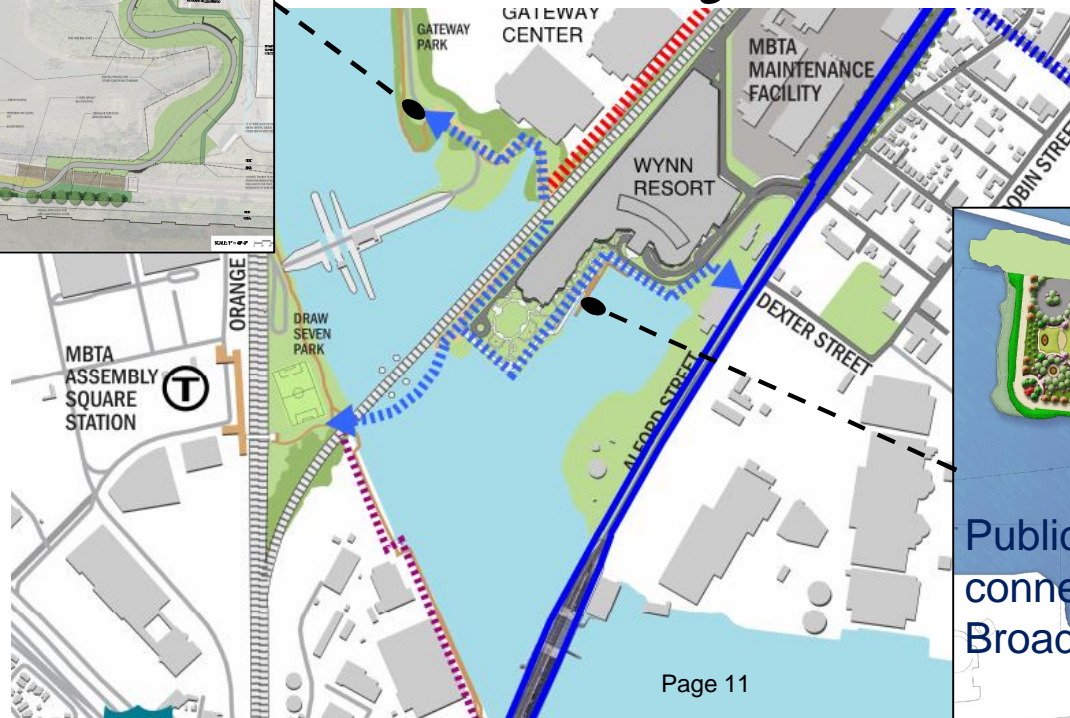
MyRWA is leading a community-driven redesign for this 5-acre park. The plan will identify amenities such as new paths, docks, public art and restored natural areas that will transform Somerville's waterfront. Outreach began September 2017.



Location and Surrounding Bike/Ped Facilities



Proposed Bicycle – Pedestrian Connections North Landing



Proposed Bicycle – Pedestrian Connections South Landing

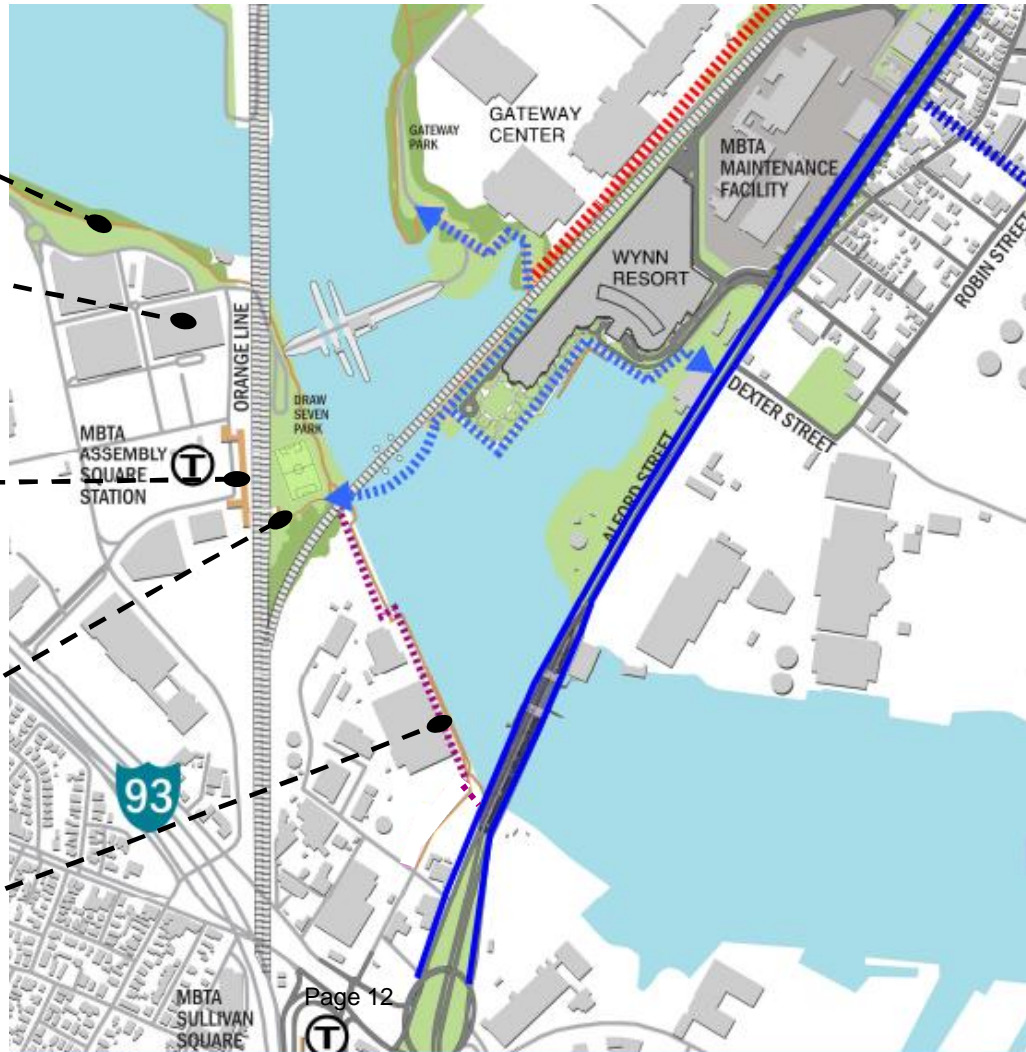
Mystic River Trail

Assembly Row

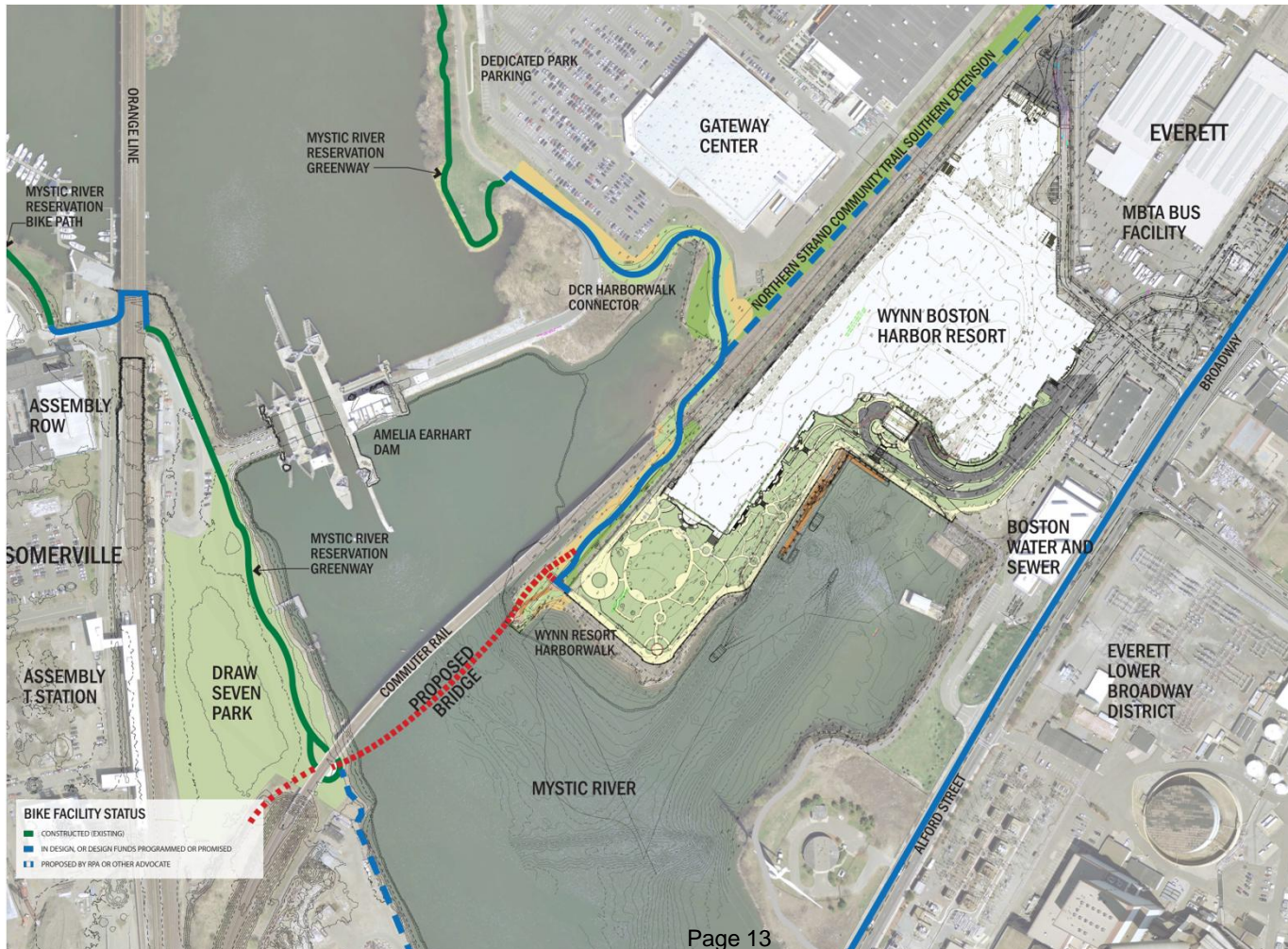
MBTA Assembly
Station

Draw Seven Park

DCR/MBTA
Riverwalk





Location and Surrounding Facilities

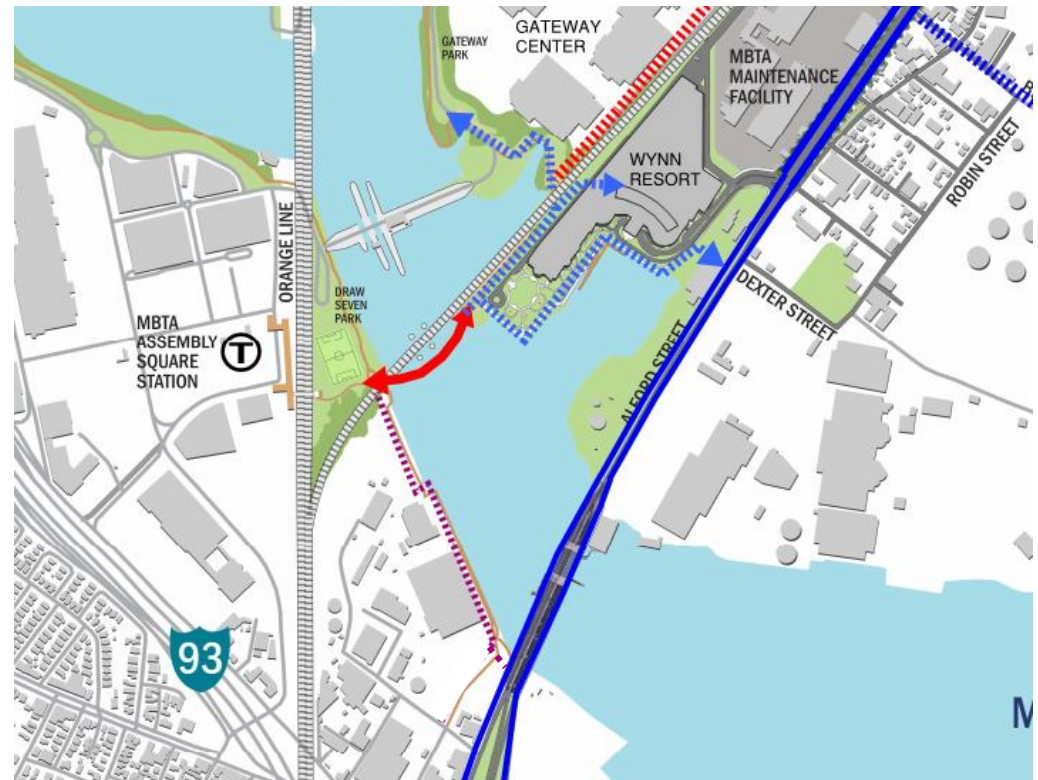


Pedestrian and Bicycle Use Forecast

- Estimated volumes on new bridge:

Weekday		Weekend
2,040		2,320
350		390
<hr/> 2,390		<hr/> 2,710

- Bridge serves different trips:
 - Everett ↔ Assembly Sq.
 - Recreational
 - Lower Broadway and Wynn employees
 - Assembly Row/Wynn patrons



Stakeholder Process

Stakeholder Process

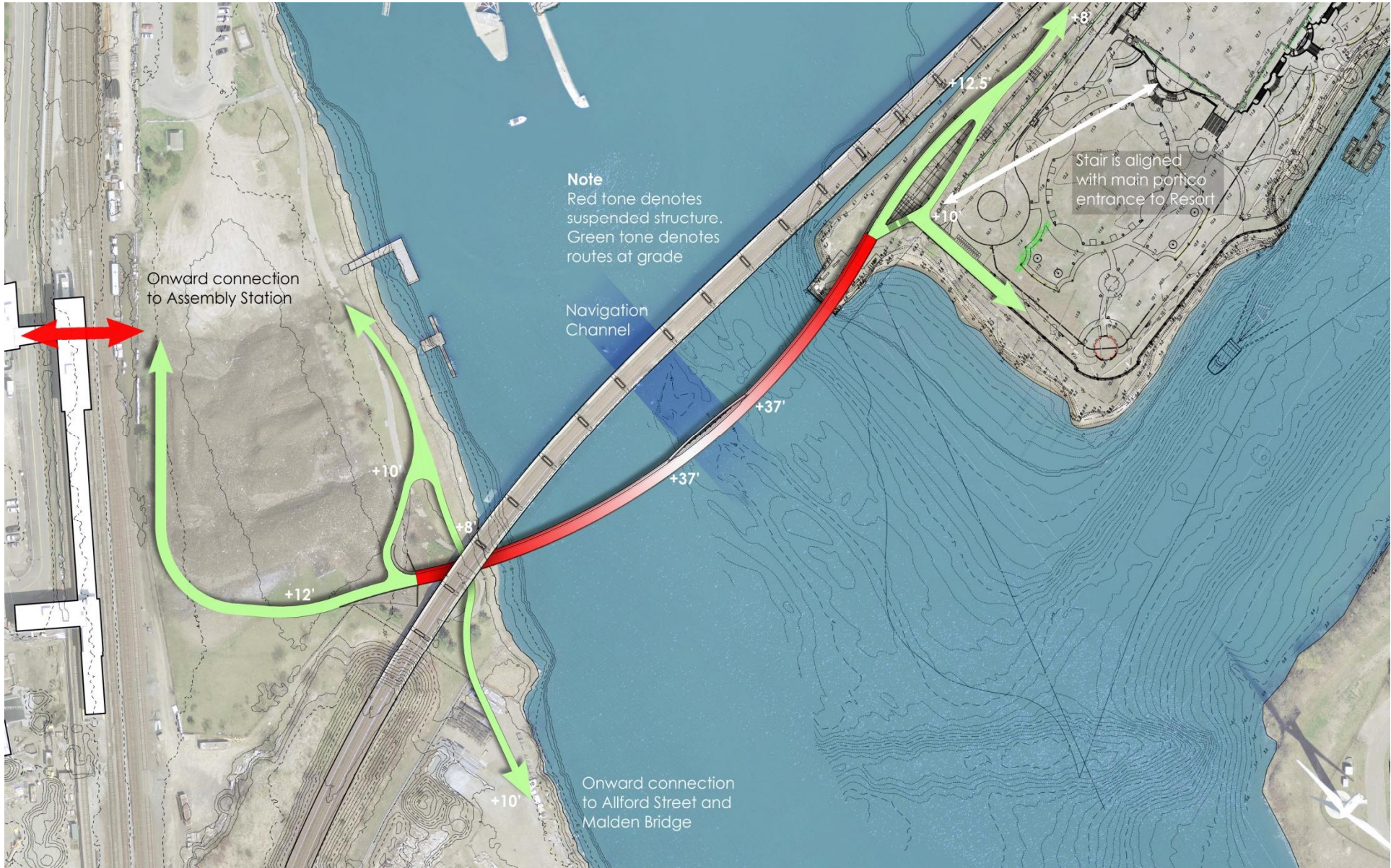
Stakeholders

- DCR
- City of Somerville
- City of Everett
- MBTA
- MassDOT
- Mystic River Watershed Association
- Massachusetts Gaming Commission
- Federal Realty Trust
- Wynn Boston Harbor

Bridge Alignment

Alignment Objectives

- Most direct route
- Limit foundations in water
- Vertical Clearance
- Future Silver Line bridge not to be precluded
- Connection to Harborwalk and Draw 7 Park
- Onward Connection to the MBTA Assembly Station and Assembly Row



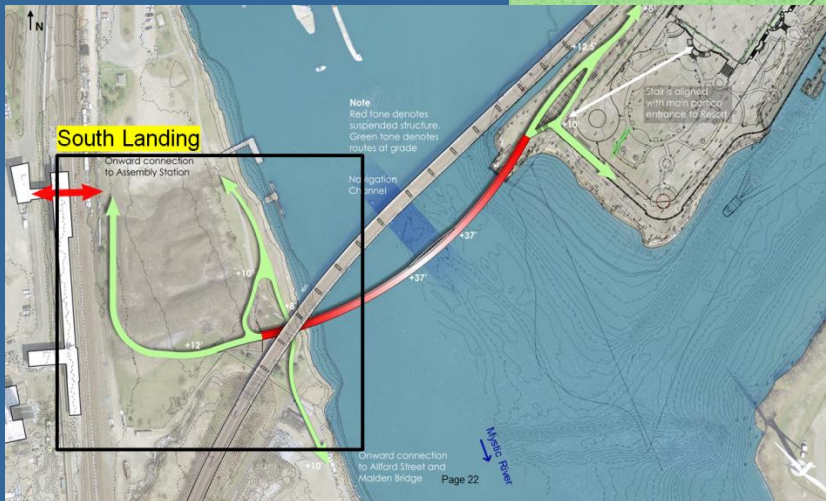
Landings



South Landing - Somerville Touchdown

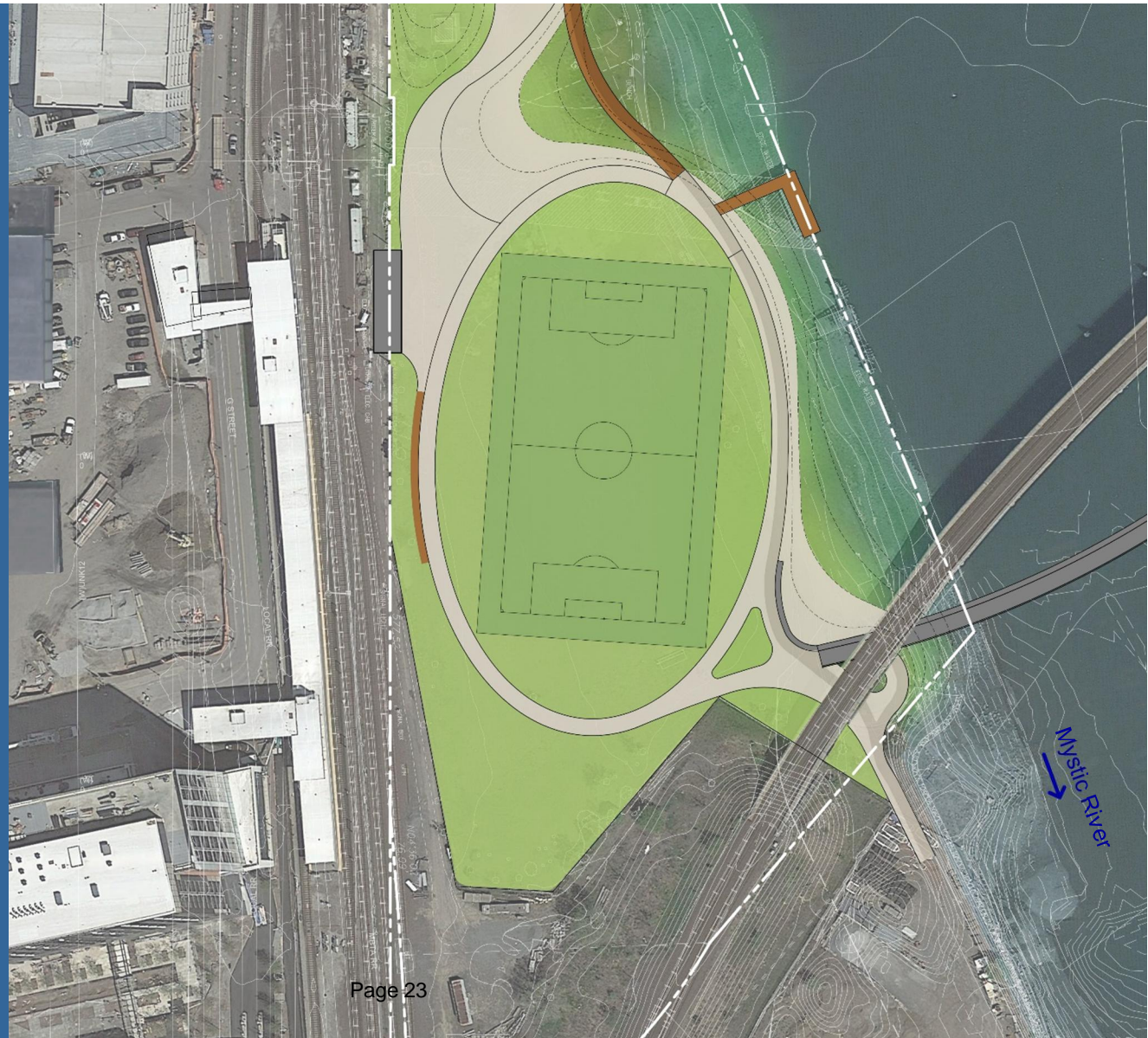
Draw 7 Park Destinations

Draw 7 Park
Assembly Station



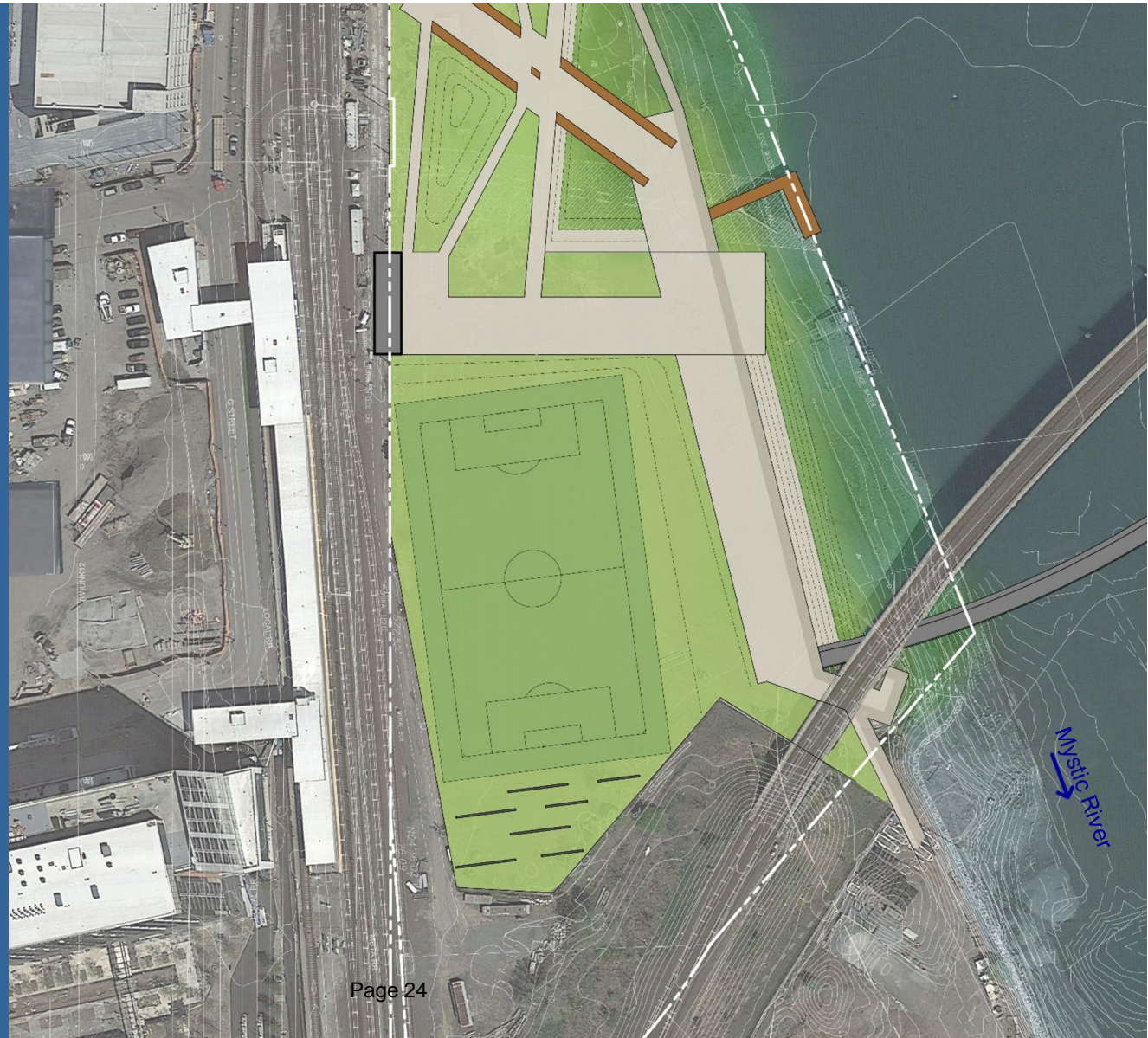
South Landing - Somerville Touchdown

Draw 7 Park Option A - Curves



South Landing - Somerville Touchdown

Draw 7 Park
Option B - Angles



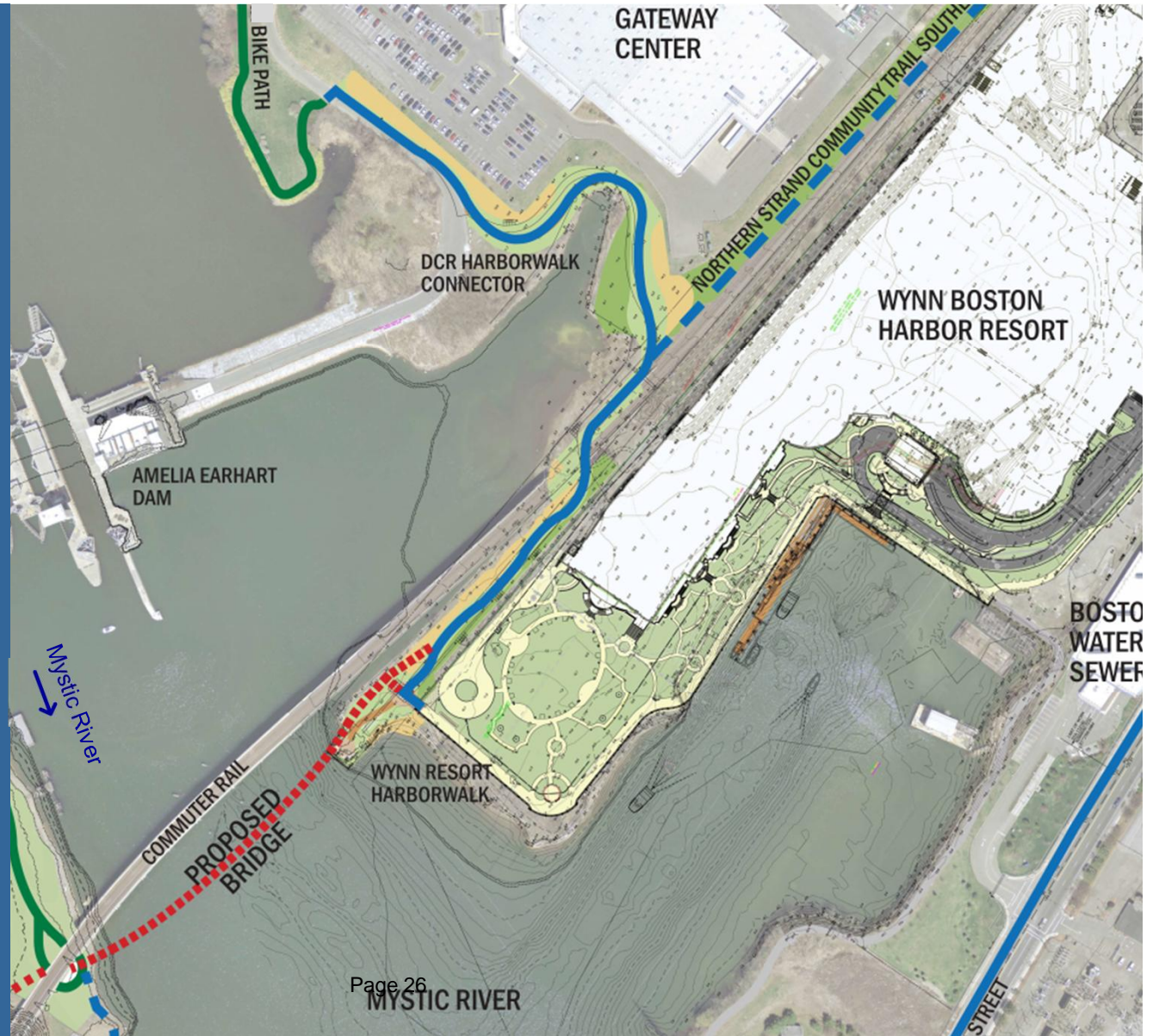
North Landing - Everett Touchdown

Wynn Boston Harbor



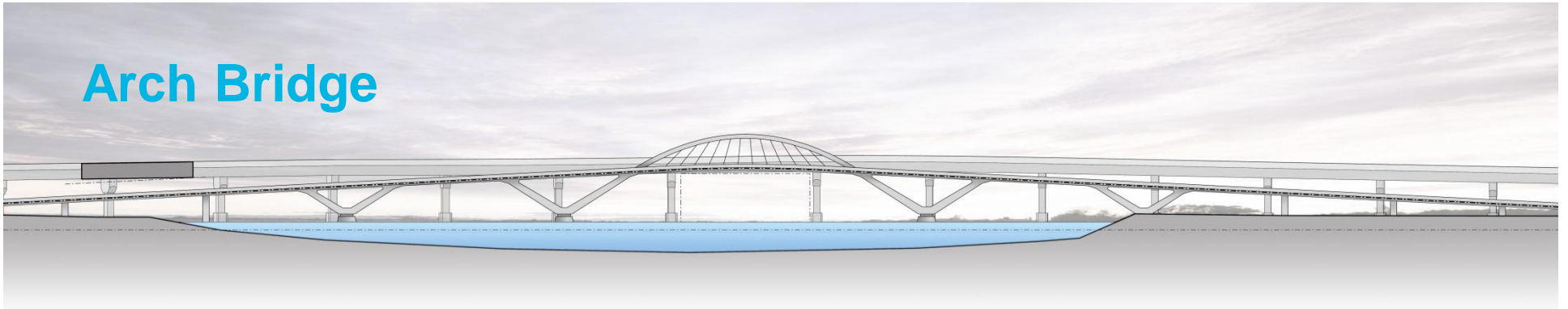
North Landing - Everett Touchdown

Wynn Boston
Harbor



Structure

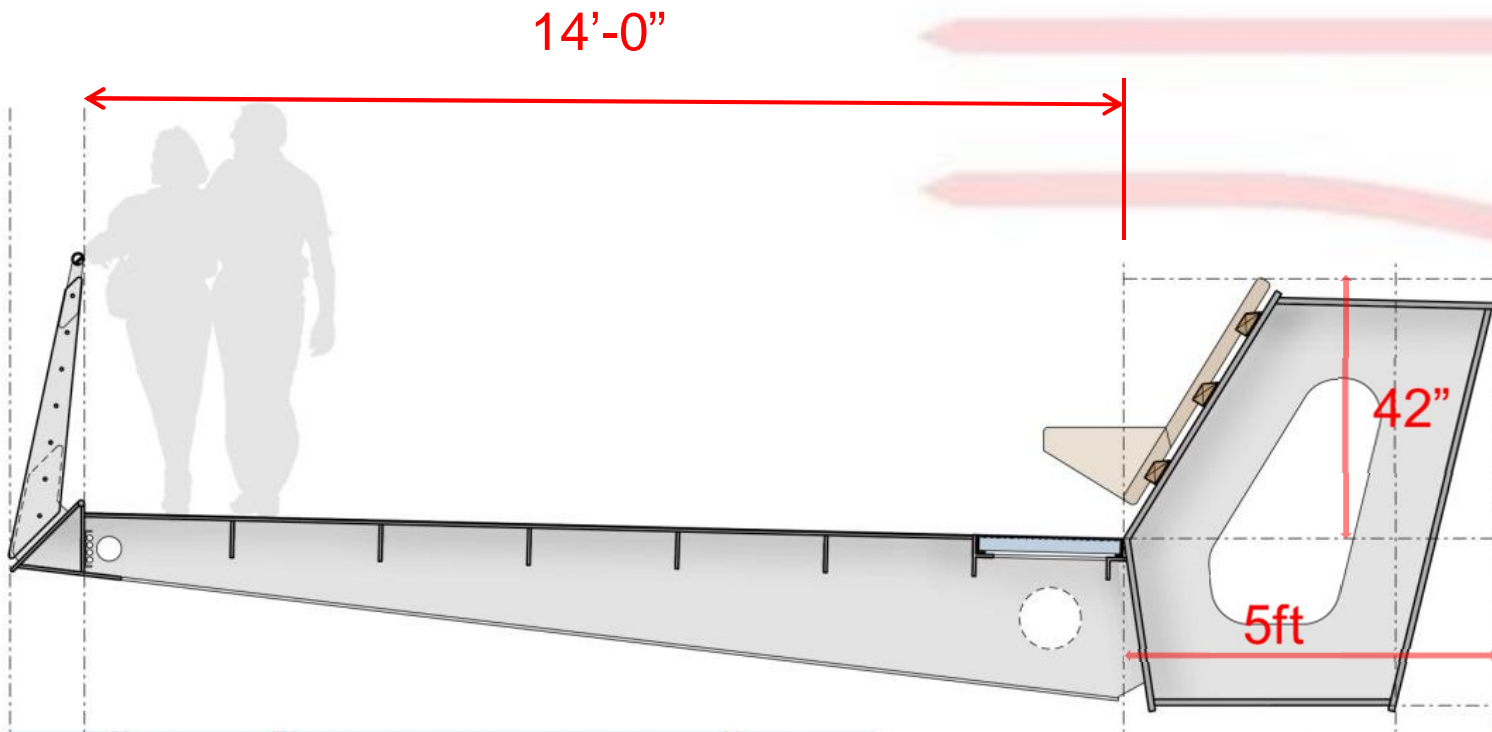
Arch Bridge



Preliminary Structure Design

- Steel Floor Beams – tapered design
- Steel Plate Deck
- Steel V-Piers
- Drilled Shafts (6' and 8' diameter)
- “Floating Pier Caps” in water to eliminate cofferdams

Upstand Beam





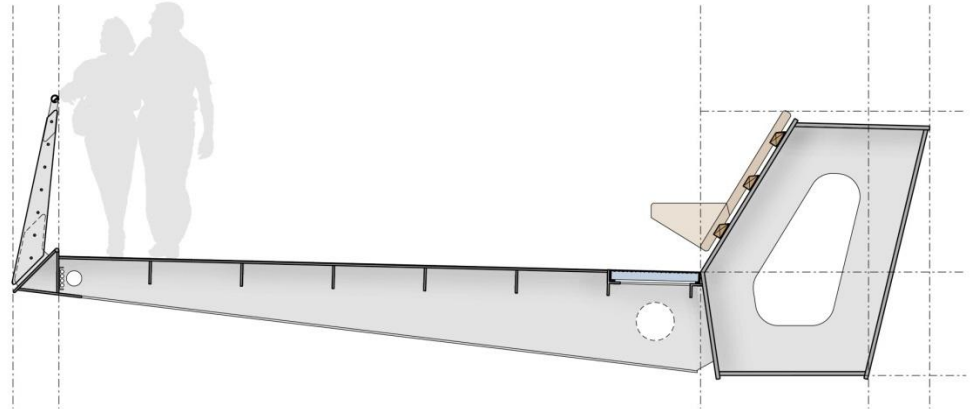
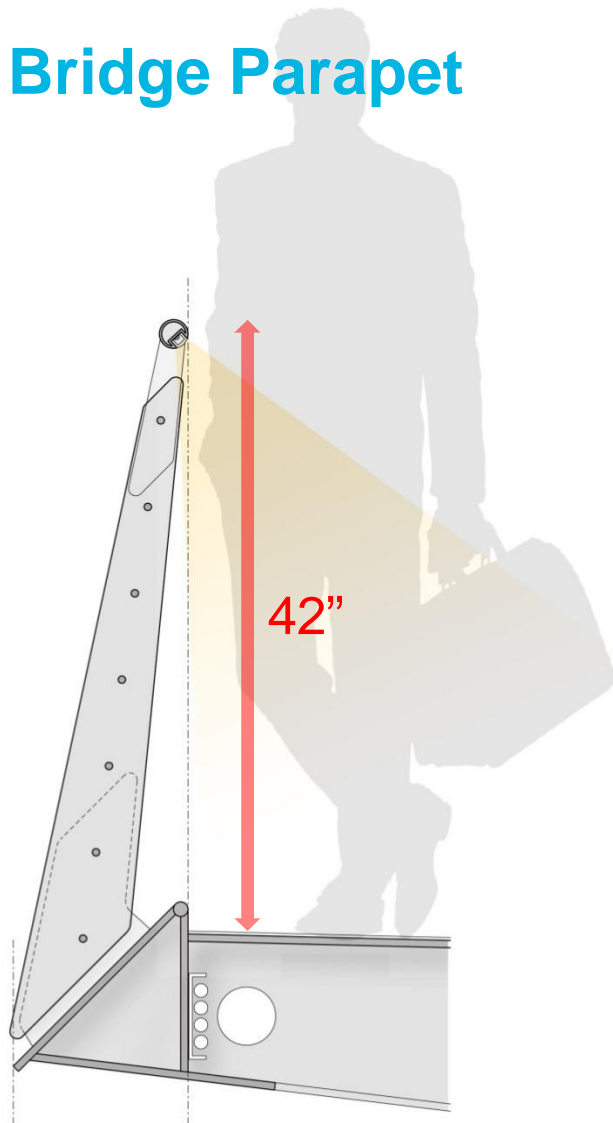


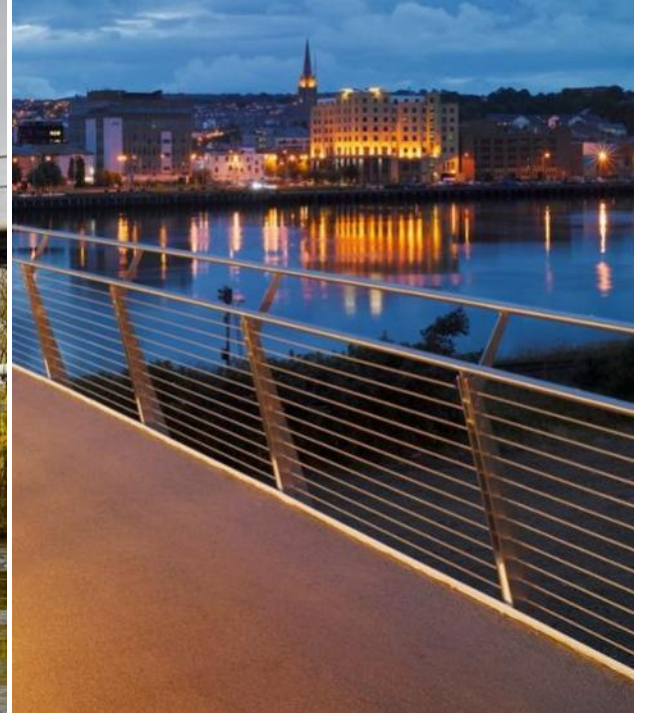




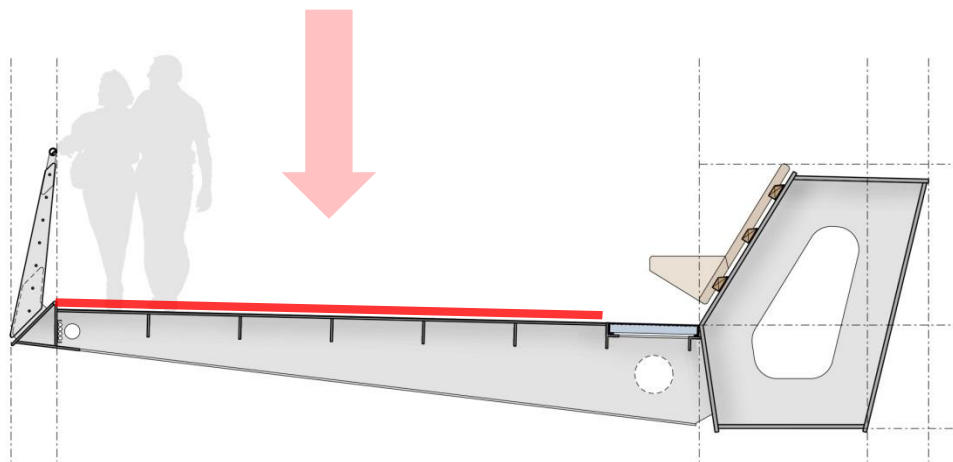
Bridge Elements

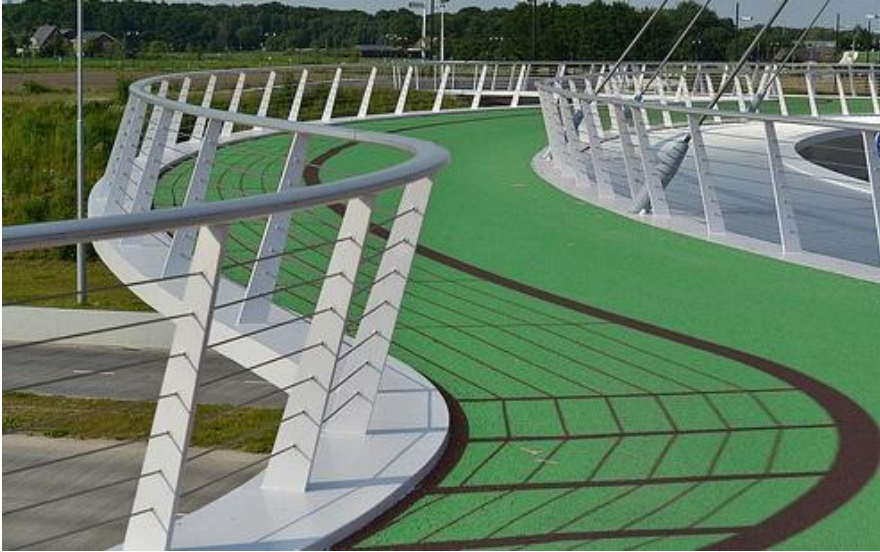
Bridge Parapet



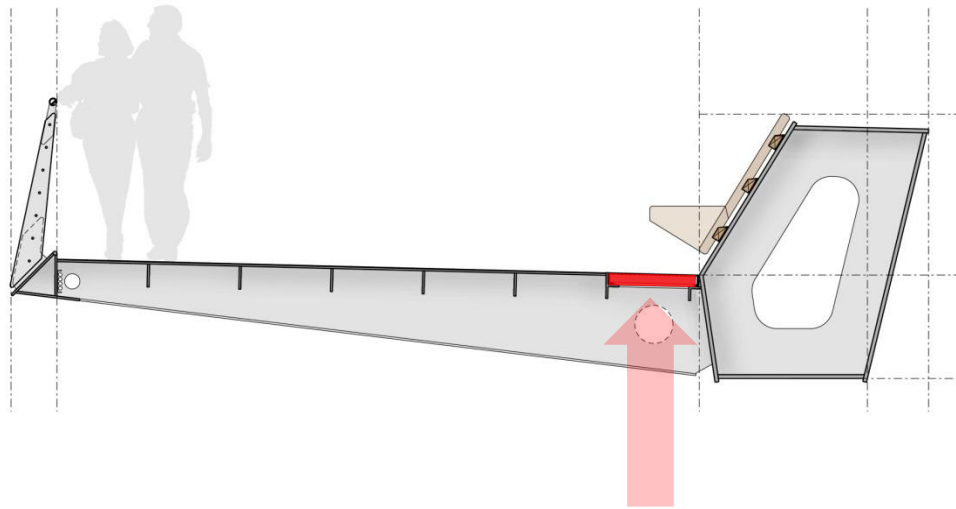


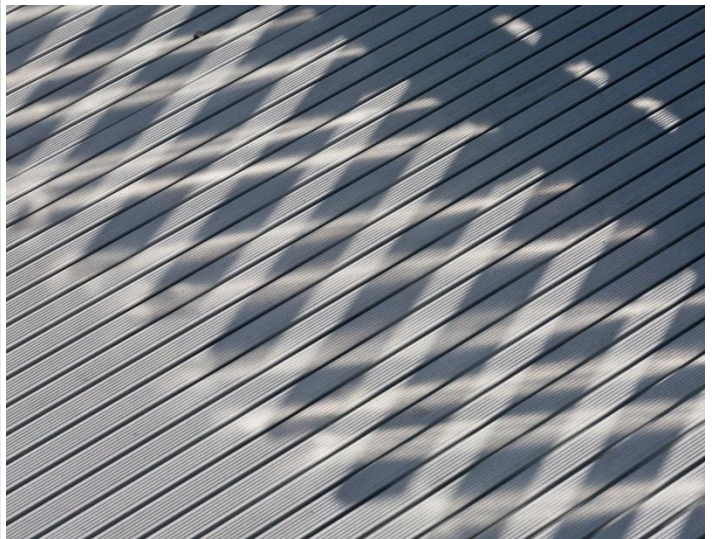
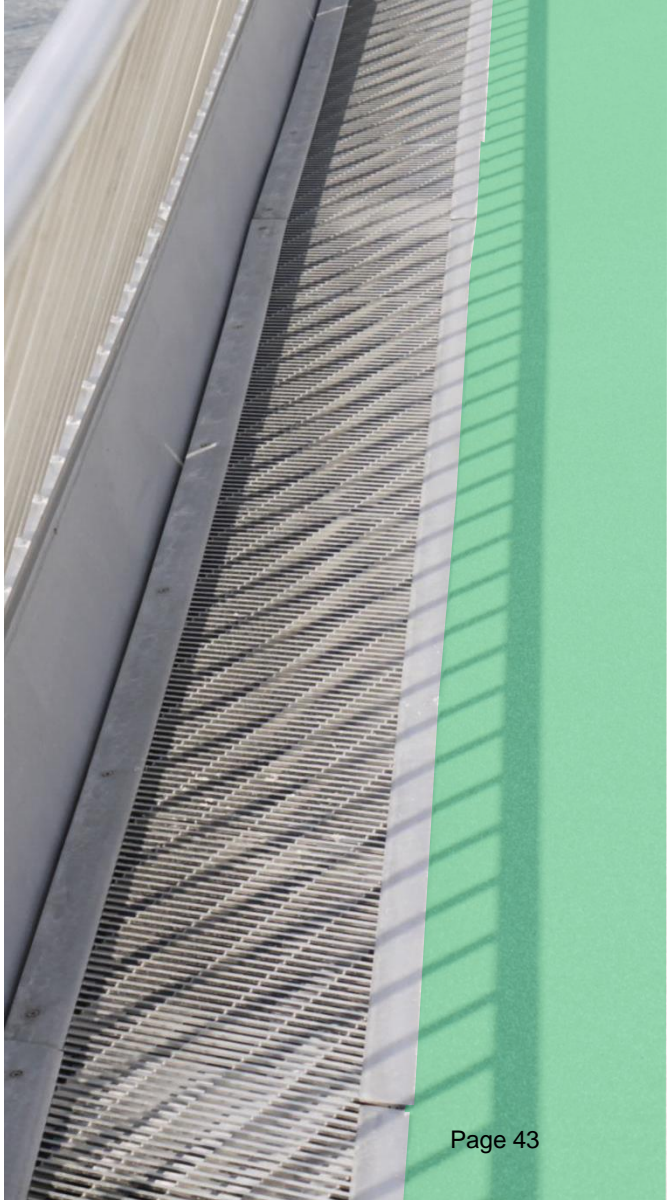
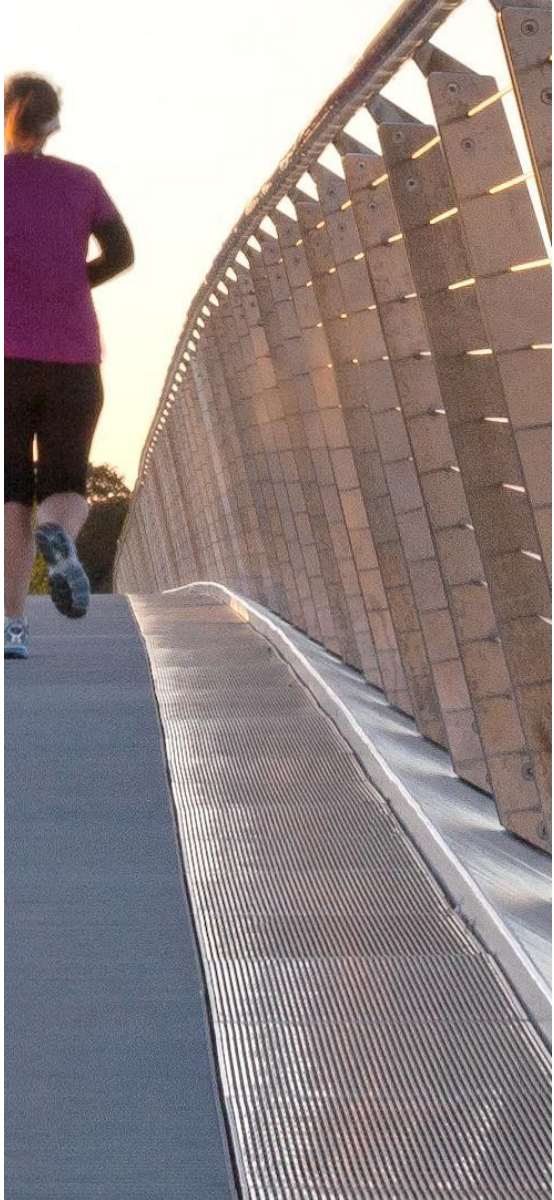
Deck Surfacing



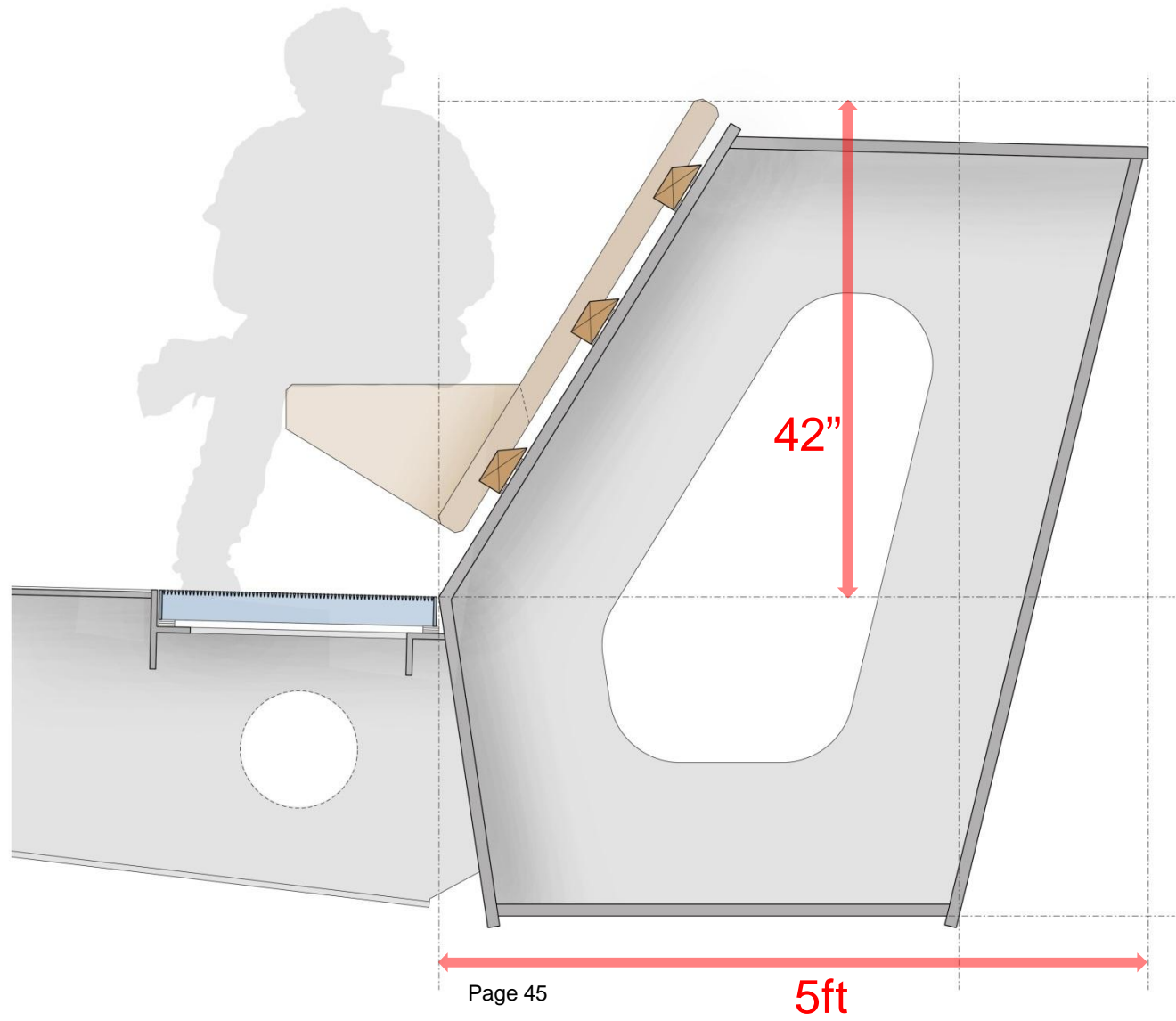






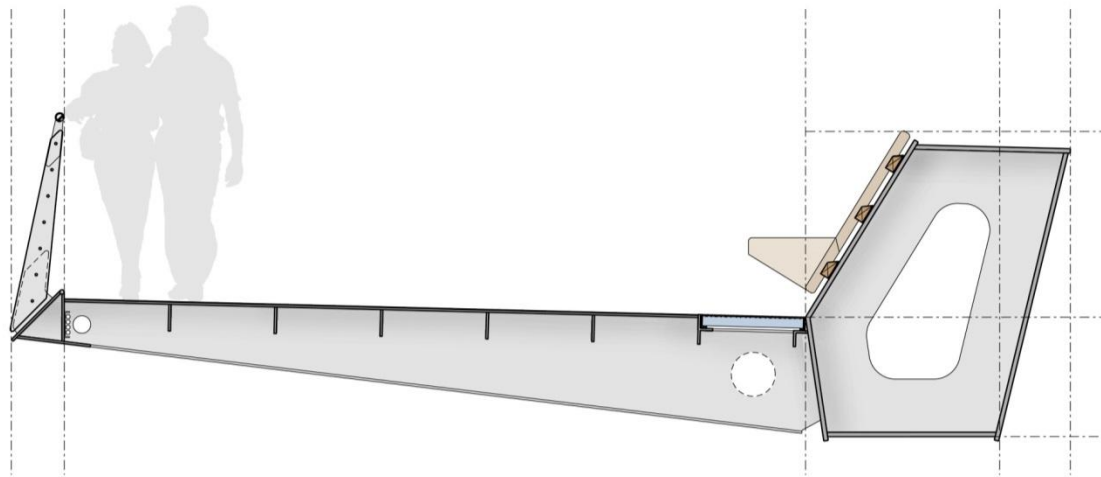


Coordinated Seating





Soffit

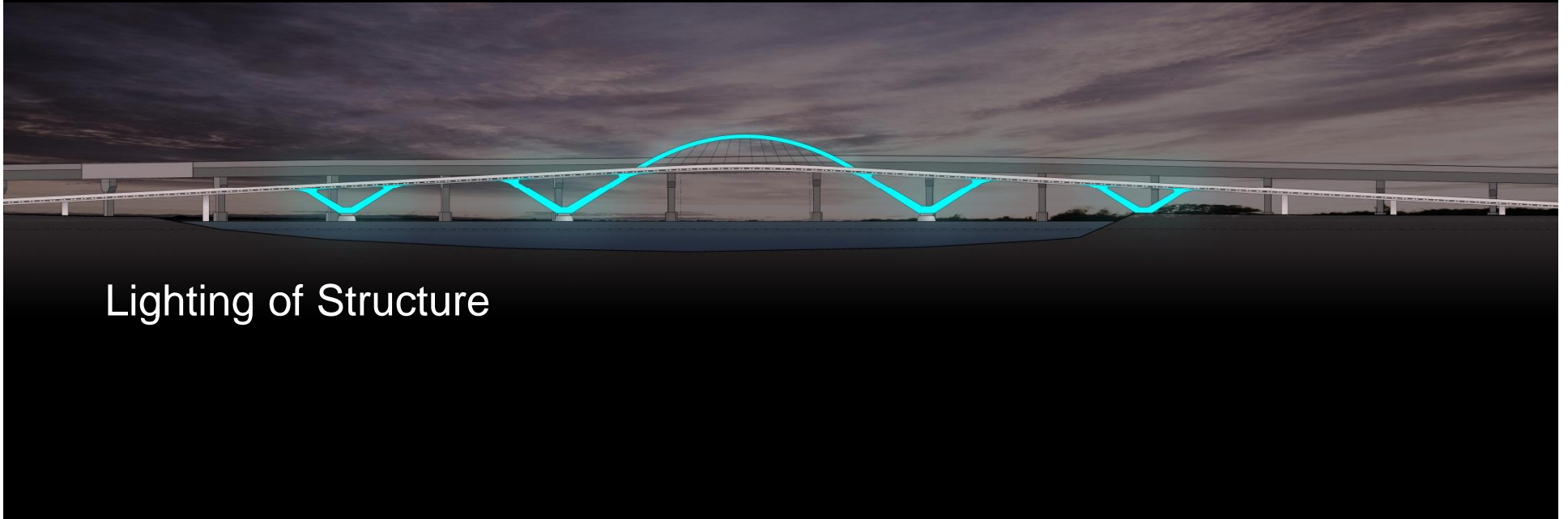
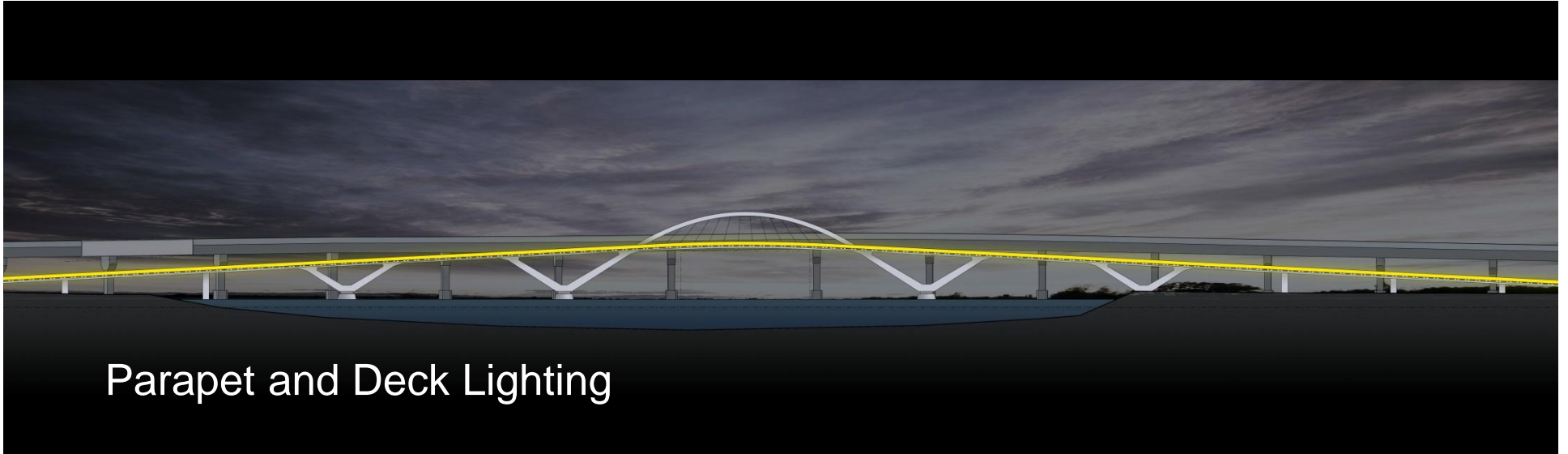




Fabrication



Bridge Lighting Options





Parapet and Deck Lighting



Lighting of Structure

Preliminary Cost Estimate

Preliminary Cost Estimate

Estimated Construction Cost = \$22,600,000

(Includes Design, Construction and Construction Engineering)

Permitting

Permitting

Approximately 19 agencies:

- 5 federal agencies
- 8 state agencies
- 6 local agencies (3 each in 2 cities)

Approximately 14 actions (permits, licenses, reviews):

- 3 federal action
- 5 state actions
- 6 local actions

Permitting (cont.)

– Timeline

- Federal approvals (United States Coast Guard (USCG) / United States Army Corps of Engineers (USACE)) will take the longest duration (10-12 months)
- Chapter 91 will take approximately 9 months

Additional Information

For more information:

<https://www.mass.gov/service-details/materials-from-past-meetings>

If you have comments or suggestions on this project:

Submit online:

<https://www.mass.gov/forms/dcr-public-comments>

Write: Department of Conservation and Recreation
Office of Public Outreach
251 Causeway Street, Suite 600
Boston, MA 02114

Deadline: Wednesday, March 7, 2018

Note: Public comments submitted to DCR may be posted on the DCR website in their entirety, and no information, including personal information, will be redacted.

If you have questions or concerns or wish to subscribe to a DCR general information or project-related listserv: contact DCR's Office of Community Relations at 617-626-4973 or Mass.Parks@state.ma.us.

Questions and Answers & Potential Next Steps