

EQUINOX 2020

CHEVROLET



Equinox Premier in Midnight Blue
Metallic with available features.

YOUR INVITATION TO INDULGE.

The award-winning Equinox strikes the perfect balance between design and technology. From any angle, the sculpted exterior makes a stunning statement. Within the spacious and refined interior, intuitive technology keeps you connected and entertained. The turbocharged engine delivers performance and efficiency for that daily drive or weekend getaway. And with a set of newly standard safety features, the intelligently designed Equinox is everything you need, to do everything you want.

FIND NEW ROADS™



**J.D. POWER NAMED EQUINOX
"MOST DEPENDABLE COMPACT SUV."¹**
Based on survey of 2016 vehicles.

¹ The Chevrolet Equinox received the fewest reported problems in its segment in one or more J.D. Power U.S. Vehicle Dependability Studies from 2018–19. Depending on study year, awards based on 2015–16 models. See jdpower.com/awards for 2019 details.

MODELS

LS

From point A to point B and anywhere in between, the well-equipped Equinox LS is ready for your next adventure.

Newly standard safety technology includes Forward Collision Alert¹, Following Distance Indicator¹, Automatic Emergency Braking¹, Front Pedestrian Braking¹, Lane Keep Assist with Lane Departure Warning¹ and IntelliBeam[®] headlamps.

A tilt and telescoping steering wheel, power-adjustable outside heated mirrors and a Tire Pressure Monitoring System² with Tire Fill Alert are also standard.



¹ Read the vehicle Owner's Manual for important feature limitations and information. ² Does not monitor spare tire, if equipped.

MODELS

LT

Equinox LT lets you soak in the comforts of home while you're turning heads wherever you go.

Signature LED daytime running lamps and high-intensity discharge headlamps light up the street, while deep-tinted rear glass and bright lower window trim add to the aesthetic.

You'll also enjoy the convenience of an 8-way power driver seat, overhead storage for sunglasses and a Driver Information Center with multi-color display.



MODELS

PREMIER

Have you ever wondered what it's like to enjoy true understated refinement? Equinox Premier is the complete package.

Exterior highlights include 18-inch machined-face aluminum wheels, foglamps, LED headlamps and taillamps, chrome mirror caps and a hands-free programmable power liftgate.

The premium look and feel continues inside with perforated leather-appointed seats and dual-zone climate controls. Memory settings on the driver door can be programmed to adjust the seat and outside mirror positions for two different drivers. A remote vehicle starter system is also standard.



SPECIAL EDITIONS

REDLINE EDITION

Turn up the heat with Equinox Redline Edition.

This special edition, available on Premier, includes Black- and Red-accented 19-inch aluminum wheels and badging, and Black mirror caps, grille, window trim and bowtie emblems.



SPECIAL EDITIONS

MIDNIGHT EDITION

Black is the new Black, especially when it's the Chevrolet Equinox Midnight Edition.

The Midnight Edition, available on LT, starts with a Mosaic Black Metallic exterior and includes a Black grille, bowtie emblems and mirror caps and Jet Black perforated leather-appointed seats. Unique 19-inch Black aluminum wheels provide the finishing touch. You get the picture.





EXTERIOR DESIGN

YOU'LL GET NOTICED.

With its confident balance of sportiness and sophistication, Equinox will command attention on any road. The chrome-accented grille (with additional chrome bars on Premier) adds upscale distinction.

Ultra-contemporary lighting – LED daytime running lamps on all models plus LED headlamps on Premier – sets a bold tone.

Available power-adjustable mirrors with integrated turn signal indicators and driver-side auto-dimming feature.

LED taillamps. Standard on Premier.

Panoramic power sunroof. Available on LT and Premier.


Dual-outlet exhaust with bright tips. Included with available 2.0L engine.





**YOU'LL FEEL LIKE IT'S
CRAFTED JUST FOR YOU.**

Equinox Premier interior in Brandy with Jet Black accents and available features.



Equinox Premier interior in Brandy with Jet Black accents and available features.

¹ Does not detect people or items. Always check rear seat before exiting.

INTERIOR DESIGN

WHO DOESN'T WANT TO TRAVEL FIRST CLASS?

Equinox is one indulgent SUV, with ample **room for five passengers**. Rear seatbacks can be placed in two positions – fully upright or slightly reclined – for precise comfort.

With the touch of a button, Equinox Premier offers the luxury of **heated driver and front passenger seats**.

Ventilated driver and front passenger seats, as well as heated rear outboard seats, are available on Premier.

The accommodations are spacious, with an impressive 39.9 inches of rear-seat leg room. And upscale details will make every ride feel like a vacation.

From available Galvano chrome to soft ambient lighting, Equinox Premier has the style you'll love. Premium Cloth on LS and LT or **perforated leather-appointed seating** on Premier further reflects this exceptional level of craftsmanship.

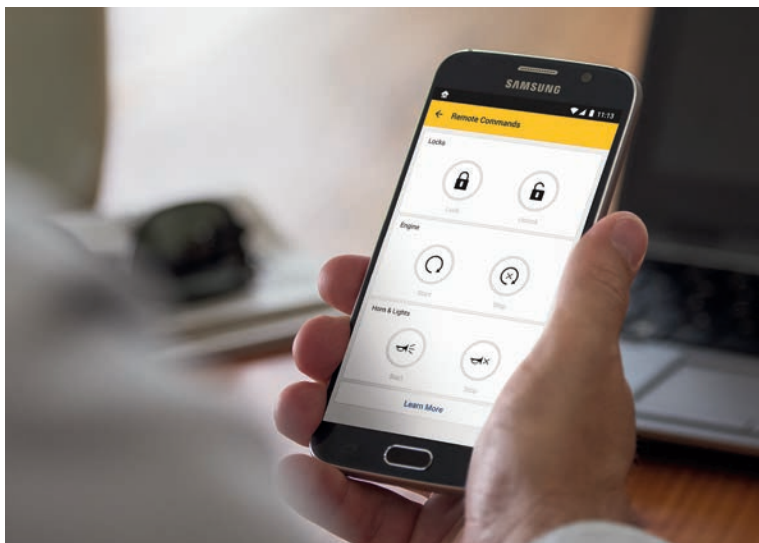
Rear Seat Reminder¹ activates when the rear doors are opened and closed up to 10 minutes before or anytime while your vehicle is on, so when you turn off the engine under certain conditions, you will get a reminder to double-check for valuables left behind.

Available myChevrolet Mobile App¹; includes remote vehicle start if properly equipped (requires paid plan).

Multi-color Driver Information Center.
Standard on LT and Premier.

Apple CarPlay^{®2} integration for your iPhone[®] (shown) and Android Auto^{™3} compatibility.

Teen Driver technology.



¹ Available on select Apple and Android devices. Service availability, features and functionality vary by vehicle, device and the plan you are enrolled in. User terms apply. Device data connection required. Visit onstar.com for details and limitations. ² Vehicle user interface is a product of Apple and its terms and privacy statements apply. Requires compatible iPhone and data plan rates apply. ³ Vehicle user interface is a product of Google and its terms and privacy statements apply. Requires the Android Auto app on Google Play and an Android compatible smartphone running Android 5.0 Lollipop or higher. Data plan rates apply.

Apple CarPlay and iPhone are trademarks of Apple Inc., registered in the U.S. and other countries. Android Auto is a trademark of Google LLC.

Equinox Premier interior in Jet Black with available features.

TECHNOLOGY

INSIDE INFORMATION.

With the standard **Chevrolet Infotainment 3 system**¹, you can easily handle calls, play music and access contacts from your compatible smartphone via the color touch-screen display or through voice commands.

Conveniently charge your compatible cell phone with the available wireless charging system². SiriusXM^{®3} Radio is standard on LT and Premier for three months, and available **built-in 4G LTE Wi-Fi**⁴ offers a fast and reliable connection for up to seven devices.

¹ Chevrolet Infotainment System functionality varies by model. Full functionality requires compatible Bluetooth and smartphone, and USB connectivity for some devices. ² The system wirelessly charges one compatible mobile device. Some phones have built-in wireless charging technology and others require a special adaptor/back cover. To check for phone or other device compatibility, see my.chevrolet.com/learn or consult your carrier. ³ If you decide to continue service after your trial, your selected subscription plan will automatically renew thereafter. You will be charged at then-current rates. Fees and taxes apply. Please see the SiriusXM Customer Agreement at siriusxm.com for complete terms and how to cancel, which includes calling SiriusXM at 1-866-635-2349. All fees and programming are subject to change. ⁴ Service varies with conditions and location. Requires active service plan. Data plans offered by AT&T. Visit onstar.com for details and limitations.

SAFETY AND DRIVER ASSISTANCE

READY AND VIGILANT.



Adaptive Cruise Control – Camera. Using camera technology, this feature can automatically adapt cruise control speed to maintain a following gap to vehicles detected ahead. Available on Premier.



Front Pedestrian Braking. At speeds below 50 mph, if an imminent collision with a pedestrian directly ahead is detected, the feature can alert you and can even apply last-second emergency braking. Performance is limited at night. Standard on all models.



Automatic Emergency Braking. At speeds below 50 mph, if an imminent front-end collision is detected with a vehicle you are following, the feature can alert you and can automatically apply hard emergency braking or enhance driver hard braking. Standard on all models.



Following Distance Indicator and Forward Collision Alert. This feature monitors how close your vehicle is to the detected vehicle in front of you and can alert you to a potential crash. Standard on all models.



Lane Keep Assist with Lane Departure Warning. At speeds above 37 mph, this feature monitors road lines and can gently turn the steering wheel to help keep the vehicle in its lane or provide an alert if a lane marker is unintentionally crossed. Standard on all models.



Lane Change Alert with Side Blind Zone Alert. This feature can provide side mirror alerts when it detects fast-approaching vehicles in adjacent lanes as well as moving vehicles in the side mirror blind zones. Standard on Premier. Available on LT.



Rear Cross Traffic Alert. This feature can alert you to detected vehicles crossing behind your Equinox when backing up. Standard on Premier. Available on LT.



Rear Vision Camera. When traveling in Reverse at low speeds, this feature helps provide a view of the area immediately behind your Equinox. Standard on all models.



Rear Park Assist. When traveling in Reverse at low speeds, this feature can provide distance alerts when it detects certain stationary objects in close proximity behind the vehicle. Standard on Premier. Available on LT.



IntelliBeam headlamps. When oncoming headlamps are sensed or when taillamps are detected, this feature intuitively adjusts between low and high beams. Standard on all models.

Safety starts with you. Safety or driver assistance features are no substitute for the driver's responsibility to operate the vehicle in a safe manner. The driver should remain attentive to traffic, surroundings and road conditions at all times. Visibility, weather and road conditions may affect feature performance. Read the vehicle Owner's Manual for more important feature limitations and information.





OVERALL VEHICLE SCORE FOR SAFETY!

— National Highway Traffic Safety Administration



SAFETY AND DRIVER ASSISTANCE

A FIVE-STAR RATING IS JUST THE STARTING POINT.

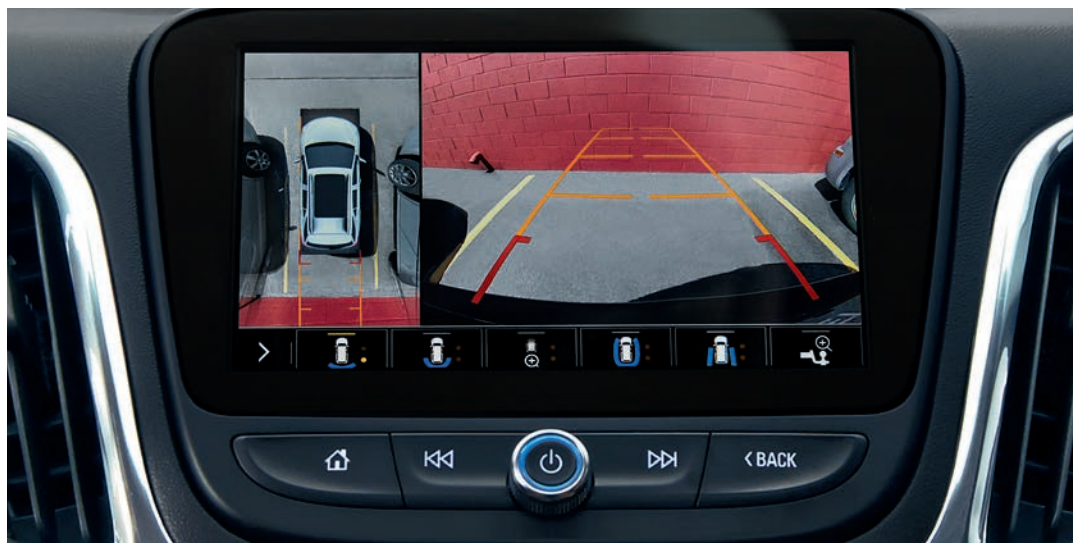
The 2020 Equinox has received a **5-Star Overall Vehicle Score for safety** from the National Highway Traffic Safety Administration! And with an abundance of newly standard safety features, Equinox will help you feel confident every time you get behind the wheel.

¹ Government 5-Star Safety Ratings are part of the National Highway Traffic Safety Administration's (NHTSA's) New Car Assessment Program (www.nhtsa.gov).

Safety Alert Seat!
Available on Premier.

HD Surround Vision!
Available on Premier.

**High-strength steel and
robust body structure.**



¹ Safety or driver assistance features are no substitute for the driver's responsibility to operate the vehicle in a safe manner. The driver should remain attentive to traffic, surroundings and road conditions at all times. Visibility, weather and road conditions may affect feature performance. Read the vehicle Owner's Manual for more important feature limitations and information.

Equinox Premier in Cajun Red
Tintcoat (extra-cost color)
with available features.



PERFORMANCE

EMPOWER YOUR DRIVE.

The standard **1.5L turbocharged 4-cylinder engine** uses the technologies of Variable Valve Timing and Direct Injection to deliver responsive performance with unexpected efficiency. The 1.5L turbo puts 170 horsepower at your command, along with 203 lb.-ft. of torque. It also

offers an EPA-estimated 26 MPG city/31 highway (FWD) and 25 MPG city/30 highway (AWD).

The available 252-horsepower **2.0L turbocharged engine** generates 260 lb.-ft. of torque for plenty of towing power. With this engine,

Equinox offers an EPA-estimated 22 MPG city/29 highway (FWD) and 22 MPG city/28 highway (AWD).

Available exclusively with the 2.0L turbocharged engine, an advanced **9-speed automatic transmission** is designed to help keep the engine

operating at near peak efficiency. **Stop/start engine technology**, standard on every Equinox, automatically shuts down the engine as you come to a stop under certain driving conditions, such as a stoplight. The engine seamlessly restarts when you take your foot off the brake.

CAPABILITY

Equinox Premier in Nightfall Gray Metallic with available 2.0L turbo engine and other available features.

TOW UP TO 3,500 LBS!

Bring on the Jet Skis, small camper or boat. **Trailer Sway Control**, Hill Start Assist with Automatic Vehicle Hold and factory-installed trailering equipment are all included with the available 2.0L turbocharged engine. And with available **HD Surround Vision**² you can choose a rear camera view to help when hooking up a trailer.

The available **switchable all-wheel drive** enhances traction and control on slippery or snow-covered roads. You can leave switchable AWD on year-round, since the rear wheels only engage when the system senses reduced traction. In FWD mode, AWD components completely disengage for greater fuel efficiency³



¹ Requires available trailering equipment. Before you buy a vehicle or use it for trailering, carefully review the Trailering section of the Owner's Manual. The weight of passengers, cargo and options or accessories may reduce the amount you can tow. ² Read the vehicle Owner's Manual for important feature limitations and information. ³ EPA-estimated MPG city/highway for Equinox with available AWD: 25/30 (1.5L), 22/28 (2.0L).



VERSATILITY

LOAD IT UP AND PACK IT IN.

Some days, traveling light just isn't an option. Not to worry, Equinox has you covered. The 60/40 split-folding rear seats fold flat to create up to **63.9 cu. ft. of maximum cargo capacity!** And conveniently placed cargo hooks help keep luggage secure.

There's a place for everything in Equinox. In addition to the **LED-lit center console compartment**, you'll find dedicated storage for a cell phone, four cup holders, map pockets and an available flip-down compartment for sunglasses. There's also water bottle storage in all four doors.

¹ Cargo and load capacity limited by weight and distribution.

Programmable liftgate. Standard on Premier and available on LT.

Hands-free gesture liftgate. Standard on Premier.

Easy-access rear storage compartment.

Rear-seat ventilation outlets and USB charge ports!



¹ Not compatible with all devices.

ACCESSORIES



EXTERIOR COLORS



Summit White



Iridescent Pearl Tricoat^{1,2}



Silver Ice Metallic



Satin Steel Metallic^{3,4}



Nightfall Gray Metallic⁵



Chocolate Metallic²



Cajun Red Tintcoat^{1,2}



Cayenne Orange Metallic^{1,5}



Pacific Blue Metallic²



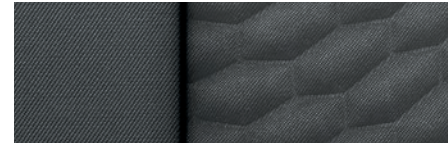
Midnight Blue Metallic⁵



Mosaic Black Metallic⁵

¹ Extra-cost color. ² Not available on L or LS. ³ Not available on L, LS or Premier. ⁴ Late availability. ⁵ Not available on L.

MODELS



Medium Ash Gray Premium Cloth



17" Painted-Aluminum Wheels
Standard on L

L Equinox L includes these features:

MECHANICAL

Brakes – 4-wheel antilock, 4-wheel disc with Duralife® rotors; electronic parking brake

Engine – 1.5L turbocharged DOHC 4-cylinder with Variable Valve Timing (VVT), Direct Injection and stop/start technology

StabiliTrak® – Electronic Stability Control System with Traction Control; includes Hill Start Assist¹

Transmission – 6-speed automatic, electronically controlled with overdrive and Driver Shift Control

EXTERIOR

Active aero shutters

Daytime running lamps – LED

Door handles – body-color

Fuel filler – capless fueling

Glass – solar-absorbing tinted and acoustic-laminated windshield

Headlamps – halogen, automatic on/off with automatic delay

IntelliBeam headlamps – automatic high beam on/off

Mirrors – heated, power-adjustable, manual-folding with Black caps

Wipers – front variable-speed, intermittent with washers; rear intermittent with washer

INTERIOR

Active Noise Cancellation

Air conditioning – manual, single-zone

Audio – 6-speaker system

Automatic Emergency Braking¹

Cruise control – electronic with Set and Resume Speed

Door locks – power programmable with lockout protection and manual rear door child security

Driver Information Center – 3.5-inch diagonal monochromatic display

Entertainment – Chevrolet Infotainment 3 system² with 7-inch diagonal color touch-screen, AM/FM stereo, Bluetooth[®] audio streaming³ for two active devices, voice command pass-through to compatible phone, and Apple CarPlay^{®4} and Android Auto^{™5} compatibility

Floor mats – carpeted front

INTERIOR (CONTINUED)

Following Distance Indicator¹ and Forward Collision Alert¹

Front Pedestrian Braking¹

Keyless Open and Start – includes extended-range Remote Keyless Entry

Lane Keep Assist with Lane Departure Warning¹

Lighting – front-seat LED reading lamps, overhead courtesy lamp, LED pin spot lighting on floor console, lamp in floor console bin, rear-seat LED reading lamps and LED rear cargo area lamp

Media – USB ports⁶ one type-A and one type-C, and auxiliary input jack in front center stack storage area; two type-A, charge-only, on rear of center console

Rear Vision Camera¹

Seats – driver and front passenger 6-way manual adjuster

Steering column – manual tilt and telescoping

Steering wheel – 3-spoke, deluxe with mounted audio, cruise and phone controls

Theft-deterrent system – unauthorized entry

Tire Pressure Monitor – with Tire Fill Alert (does not monitor spare tire, if equipped)

Visors – driver and front passenger, covered illuminated vanity mirrors

Windows – power with driver express-up/-down, all others express-down

¹ Read the vehicle Owner's Manual for important feature limitations and information. ² Chevrolet Infotainment System functionality varies by model. Full functionality requires compatible Bluetooth and smartphone, and USB connectivity for some devices. ³ Go to my.chevrolet.com/learnAbout/bluetooth to find out which phones are compatible with the vehicle. Full Bluetooth feature functionality varies by device, model and software version. ⁴ Vehicle user interface is a product of Apple and its terms and privacy statements apply. Requires compatible iPhone and data plan rates apply. ⁵ Vehicle user interface is a product of Google and its terms and privacy statements apply. Requires the Android Auto app on Google Play and an Android compatible smartphone running Android 5.0 Lollipop or higher. Data plan rates apply. ⁶ Not compatible with all devices.

MODELS (CONTINUED)



Medium Ash Gray Premium Cloth

LS In addition to or replacing L features, LS includes:

EXTERIOR

Tire - compact spare

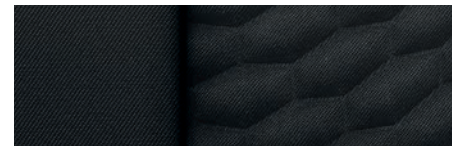
INTERIOR

Floor mats - carpeted rear

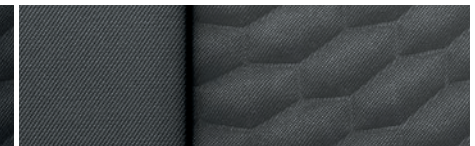


17" Painted-Aluminum Wheels
Standard on LS

MODELS (CONTINUED)



Jet Black Premium Cloth (shown)



Medium Ash Gray Premium Cloth



Jet Black Perforated Leather-Appointed Seating Surfaces²

LT In addition to or replacing LS features, LT includes:

EXTERIOR

Glass – deep-tinted rear windows

Headlamps – high-intensity discharge (HID)

Mirror caps – body-color

Moldings – bright lower window trim

INTERIOR

Console – overhead storage for sunglasses

Driver Information Center – 4.2-inch diagonal multi-color display

Seat – driver 8-way power adjuster with 2-way power lumbar control

Seat release – second-row mechanical levers in cargo area

SiriusXM[®] Radio¹ – All Access Package with 3-month trial subscription



17" Painted-Aluminum Wheels
Standard on LT with 1.5L engine



18" Machined-Face Aluminum Wheels with Painted Pockets
Standard on LT with 2.0L engine; available on LT
with 1.5L engine



19" Gloss Black-Painted Aluminum Wheels
Available on LT with Midnight Edition

¹ If you decide to continue service after your trial, your selected subscription plan will automatically renew thereafter. You will be charged at then-current rates. Fees and taxes apply. Please see the SiriusXM Customer Agreement at siriusxm.com for complete terms and how to cancel, which includes calling SiriusXM at 1-866-635-2349. All fees and programming are subject to change. ² Requires available Midnight Edition.

MODELS (CONTINUED)



PREMIER In addition to or replacing LT features, Premier includes:

EXTERIOR

Door handles – body-color with chrome accent

Foglamps

Headlamps – LED

Liftgate – power, programmable, hands-free

Mirrors – heated, power-adjustable, with integrated turn signal indicators and driver-side auto-dimming feature; manual-folding with chrome caps

Roof rails – bright

Taillamps – LED

INTERIOR

Air conditioning – automatic, dual-zone with individual climate settings for driver and front passenger; rear console air vents

Entertainment – Chevrolet Infotainment 3 Plus system¹ with 8-inch diagonal HD color touch-screen, AM/FM stereo, Bluetooth[®] audio streaming² for two active devices, Apple CarPlay^{®3} and Android Auto^{™4} compatibility, voice recognition and in-vehicle apps⁵

Lane Change Alert with Side Blind Zone Alert⁶

Media – USB ports⁷; two type-A, in floor console storage bin

Memory – driver seat and exterior mirror settings

Mirror – rearview, auto-dimming

Power outlet – 120-volt on rear of center console

Rear Cross Traffic Alert⁶

Rear Park Assist⁶

Rear Vision Camera⁶ – HD

Remote vehicle starter system

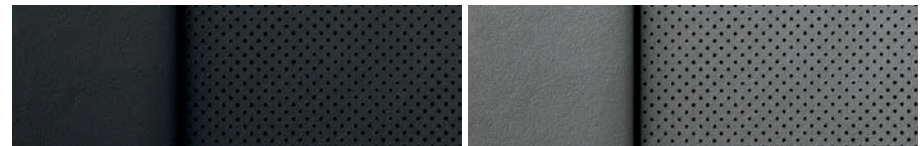
Seats – heated driver and front passenger

Sill plates – front, bright

Steering wheel – leather-wrapped

Universal Home Remote – programmable transmitter, includes garage door opener

Wireless charging⁸



Jet Black Perforated Leather-Appointed Seating Surfaces

Medium Ash Gray Perforated Leather-Appointed Seating Surfaces



Brandy Perforated Leather-Appointed Seating Surfaces (shown)⁹



18" Machined-Face Aluminum Wheels with Painted Pockets Standard on Premier with 1.5L engine



19" Bright Machined-Face Aluminum Wheels with Sparkle Silver-Painted Pockets Standard on Premier with 2.0L engine; available on Premier with 1.5L engine



19" Black-Painted Aluminum Wheels with Red Accents Available on Premier with Redline Edition

¹ Chevrolet Infotainment System functionality varies by model. Full functionality requires compatible Bluetooth and smartphone, and USB connectivity for some devices. ² Go to my.chevrolet.com/learnAbout/bluetooth to find out which phones are compatible with the vehicle. Full Bluetooth feature functionality varies by device, model and software version. ³ Vehicle user interface is a product of Apple and its terms and privacy statements apply. Requires compatible iPhone and data plan rates apply. ⁴ Vehicle user interface is a product of Google and its terms and privacy statements apply. Requires the Android Auto app on Google Play and an Android compatible smartphone running Android 5.0 Lollipop or higher. Data plan rates apply. ⁵ Requires active service plan and paid AT&T vehicle data plan or compatible device with 3G/4G LTE tethering data plan. Visit onstar.com for details and limitations. ⁶ Read the vehicle Owner's Manual for important feature limitations and information. ⁷ Not compatible with all devices. ⁸ The system wirelessly charges one compatible mobile device. Some phones have built-in wireless charging technology and others require a special adaptor/back cover. To check for phone or other device compatibility, see my.chevrolet.com/learn or consult your carrier. ⁹ Not available with Cajun Red Tintcoat, Cayenne Orange Metallic or Pacific Blue Metallic exterior colors.

SPECIFICATIONS

● STANDARD ○ AVAILABLE – NOT AVAILABLE

| | L | LS | LT | PREMIER |
|--|---|----|----|---------|
| EXTERIOR | | | | |
| Antenna: Roof-mounted, Black | ● | ● | ● | – |
| Body-color | – | – | – | ● |
| Foglamps (requires available Confidence and Convenience Package on LT) | – | – | ○ | ● |
| Glass: Acoustic-laminated windshield | ● | ● | ● | ● |
| Solar-absorbing light-tinted | ● | ● | ● | ● |
| Solar-absorbing deep-tinted behind front doors (requires available LS Convenience Package on LS) | – | ○ | ● | ● |
| Headlamps: Halogen | ● | ● | – | – |
| High-intensity discharge (HID) | – | – | ● | – |
| LED | – | – | – | ● |
| LED daytime running lamps | ● | ● | ● | ● |
| Liftgate: Rear, manual | ● | ● | ● | – |
| Power, programmable (requires available Confidence and Convenience Package) | – | – | ○ | – |
| Power, programmable, hands-free | – | – | – | ● |
| Roof rails: Bright (requires available panoramic sunroof on LT with 1.5L engine; standard on LT with 2.0L engine) | – | – | ○ | ● |
| Taillamps: LED | – | – | – | ● |
| ENGINE/CHASSIS | | | | |
| Engine: 1.5L turbocharged DOHC 4-cylinder with Variable Valve Timing (VVT), Direct Injection and stop/start technology; 170 hp @ 5600 rpm, 203 lb.-ft. of torque @ 2000-4000 rpm | ● | ● | ● | ● |
| 2.0L turbocharged DOHC 4-cylinder with Variable Valve Timing (VVT), Direct Injection and stop/start technology; 252 hp @ 5500 rpm, 260 lb.-ft. of torque @ 2500-4500 rpm | – | – | ○ | ○ |
| All-wheel drive: On/off selectable | – | ○ | ○ | ○ |
| Exhaust: Single-outlet | ● | ● | ● | ● |
| Dual-outlet with bright tips (requires available 2.0L engine) | – | – | ○ | ○ |
| Steering: Power, rack-and-pinion | ● | ● | ● | ● |
| Suspension: Front, MacPherson strut; rear, 4-link | ● | ● | ● | ● |
| Trailer equipment: Includes factory trailer hitch and Tow/Haul mode (requires available 2.0L engine) | – | – | ○ | ○ |
| Transmission: 6-speed automatic, electronically controlled with overdrive and Driver Shift Control | ● | ● | ● | ● |
| 9-speed automatic, electronically controlled with overdrive and Driver Shift Control (requires available 2.0L engine) | – | – | ○ | ○ |
| SAFETY & SECURITY | | | | |
| Airbags: ¹ Dual-stage frontal airbags for driver and front passenger; seat-mounted side-impact airbags for driver and front passenger; head-curtain airbags for front and rear outboard seating positions; includes front Passenger Sensing System for frontal passenger airbag | ● | ● | ● | ● |
| Automatic Emergency Braking ² | ● | ● | ● | ● |
| Following Distance Indicator ² and Forward Collision Alert ² | ● | ● | ● | ● |

| | L | LS | LT | PREMIER |
|--|---|----|----|---------|
| SAFETY & SECURITY (CONTINUED) | | | | |
| Front Pedestrian Braking ² | ● | ● | ● | ● |
| IntelliBeam headlamps: Automatic high beam on/off | ● | ● | ● | ● |
| Lane Change Alert with Side Blind Zone Alert ² (requires available Confidence and Convenience Package on LT) | – | – | ○ | ● |
| Lane Keep Assist with Lane Departure Warning ² | ● | ● | ● | ● |
| LATCH system (Lower Anchors and Tethers for Children), for child restraint systems | ● | ● | ● | ● |
| Rear Cross Traffic Alert ² (requires available Confidence and Convenience Package on LT) | – | – | ○ | ● |
| Rear Park Assist ² (requires available Confidence and Convenience Package on LT) | – | – | ○ | ● |
| Rear Vision Camera ² | ● | ● | ● | – |
| Rear Vision Camera ² – HD (requires available Infotainment Package on LT) | – | – | ○ | ● |
| Surround Vision ² – HD (includes HD Rear Vision Camera; requires available Confidence and Convenience II Package) | – | – | – | ○ |
| Safety Alert Seat with haptic warning ² (requires available Confidence and Convenience II Package) | – | – | – | ○ |
| Teen Driver technology | ● | ● | ● | ● |
| Theft-deterrent system: Unauthorized entry | ● | ● | ● | ● |
| 1 month of OnStar Safety & Security Plan coverage ³ ; which includes Automatic Crash Response, Emergency Services, Stolen Vehicle Assistance, Roadside Assistance and Turn-by-Turn Navigation ⁴ | ● | ● | ● | ● |
| INTERIOR | | | | |
| Adaptive Cruise Control – Camera ² (requires available Confidence and Convenience II Package) | – | – | – | ○ |
| Air conditioning: Manual, single-zone | ● | ● | ● | – |
| Automatic, dual-zone with individual climate settings for driver and front passenger (requires available Confidence and Convenience Package on LT) | – | – | ○ | ● |
| Power outlets: 12-volt auxiliary, in front storage bin and rear cargo area | ● | ● | ● | ● |
| 120-volt, on rear of center console (requires available Infotainment Package on LT) | – | – | ○ | ● |
| Rear Seat Reminder ⁵ | ● | ● | ● | ● |
| Remote vehicle starter system (requires available Confidence and Convenience Package on LT) | – | – | ○ | ● |
| Steering wheel: 3-spoke, deluxe with mounted audio, cruise and phone controls | ● | ● | ● | ● |
| Leather-wrapped with mounted audio, cruise and phone controls (requires available Confidence and Convenience Package on LT) | – | – | ○ | ● |
| Heated (requires available Confidence and Convenience II Package) | – | – | – | ○ |
| Sunroof: Power panoramic with power sunshade, includes bright roof-mounted side rails on LT (requires available Confidence and Convenience Package on LT; requires available Confidence and Convenience II Package on Premier) | – | – | ○ | ○ |
| Universal Home Remote: Programmable, includes garage door opener (requires available Confidence and Convenience Package on LT) | – | – | ○ | ● |

1 A NOTE ON CHILD SAFETY: Always use seat belts and the correct child restraint for your child's age and size, even with airbags. Even in vehicles equipped with the Passenger Sensing System, children are safer when properly secured in a rear seat in the appropriate infant, child or booster seat. Never place a rear-facing infant restraint in the front seat of any vehicle equipped with an active frontal airbag. See your vehicle Owner's Manual and the child safety seat instructions for more safety information. **2** Read the vehicle Owner's Manual for important feature limitations and information. **3** OnStar plan, working electrical system, cell reception and GPS signal required. OnStar links to emergency services. Not all vehicles may transmit all crash data. Roadside services provided by Allstate Roadside Services for vehicles only. Limitations and restrictions apply. Stolen Vehicle Assistance requires armed GM factory-installed theft-deterrent system, contact method on file and enrollment to receive alerts. Services are intended to assist with vehicle recovery and do not prevent theft or protect against damage or loss. Visit onstar.com for details and limitations. Availability subject to change. **4** Advisor-based Turn-by-Turn Navigation is subject to User Terms and limitations, and varies by vehicle model. Map coverage available in the United States, Puerto Rico and Canada. **5** Does not detect people or items. Always check rear seat before exiting.

SPECIFICATIONS (CONTINUED)

● STANDARD ○ AVAILABLE – NOT AVAILABLE

| | L | LS | LT | PREMIER |
|--|---|----|----|---------|
| SEATING | | | | |
| Seats: Front bucket | ● | ● | ● | ● |
| Rear manual-folding 60/40 split-bench with center armrest | ● | ● | ● | ● |
| Seat: Driver 6-way manual adjuster | ● | ● | – | – |
| Driver 8-way power adjuster with 2-way power lumbar control (requires available LS Convenience Package on LS) | – | ○ | ● | ● |
| Front passenger 6-way manual adjuster | ● | ● | ● | ● |
| Front passenger 8-way power adjuster with 2-way power lumbar control (requires available Confidence and Convenience II Package) | – | – | – | ○ |
| Heated driver and front passenger seats (requires available Confidence and Convenience Package on LT) | – | – | ○ | ● |
| Ventilated driver and front passenger seats (requires available Confidence and Convenience II Package) | – | – | – | ○ |
| Heated rear outboard seating positions (requires available Confidence and Convenience II Package) | – | – | – | ○ |
| ENTERTAINMENT | | | | |
| Chevrolet Infotainment 3 system ¹ with 7-inch diagonal color touch-screen, AM/FM stereo, Bluetooth [®] audio streaming ² for two active devices, voice command pass-through to compatible phone, and Apple CarPlay ^{®3} and Android Auto ^{™4} compatibility | ● | ● | ● | – |
| Chevrolet Infotainment 3 Plus system ¹ with 8-inch diagonal HD color touch-screen, includes features listed above, voice recognition and in-vehicle apps ⁵ | – | – | – | ● |
| Chevrolet Infotainment 3 Plus with Navigation system ¹ ; includes Plus system features listed above, Connected Navigation ⁶ and enhanced voice recognition (requires available Infotainment Package) | – | – | ○ | – |
| Chevrolet Infotainment 3 Premium with Navigation system ¹ ; includes Plus system features listed above, Connected Navigation ⁶ ; enhanced voice recognition and additional memory for in-vehicle apps ⁵ (requires available Infotainment II Package) | – | – | – | ○ |
| Audio: 6-speaker system | ● | ● | ● | ● |
| Bose premium 7-speaker audio system (requires available Infotainment II Package) | – | – | – | ○ |
| Media: USB ports ⁷ ; one type-A and one type-C, and auxiliary input jack in front center stack storage area | ● | ● | ● | – |
| USB ports ⁷ ; two type-A and one type-C, SD card reader and auxiliary input jack in front center stack storage area (requires available Infotainment Package on LT) | – | – | ○ | ● |
| USB ports ⁷ ; one type-C in floor console storage bin (requires available Infotainment Package on LT) | – | – | ○ | ● |
| USB ports ⁷ ; two type-A, charge-only, on rear of center console | ● | ● | ● | ● |
| HD Radio [®] (requires available Infotainment II Package) | – | – | – | ○ |
| SiriusXM [®] Radio [®] All Access Package with 3-month trial subscription | – | – | ● | ● |
| 4G LTE Wi-Fi ^{®9} hotspot for up to seven devices, includes 1 month or 3 GB of data (whichever comes first) | ○ | ○ | ○ | ○ |
| Chevrolet Connected Access ¹⁰ with 10 years of standard connectivity, which currently enables features such as Vehicle Diagnostics and Dealer Maintenance Notification | ● | ● | ● | ● |

| | L | LS | LT | PREMIER |
|--|---|----|----|---------|
| PACKAGES AND SPECIAL EDITIONS | | | | |
| LS Convenience Package | – | ○ | – | – |
| 8-way power driver seat adjuster with 2-way power lumbar control and deep-tinted rear glass behind front doors | | | | |
| Confidence and Convenience Package | – | – | ○ | – |
| Driver Confidence II Package (Rear Park Assist ¹¹ , Rear Cross Traffic Alert ¹¹ and Lane Change Alert with Side Blind Zone Alert ¹¹) and Driver Convenience Package (foglamps, remote vehicle starter system, dual-zone automatic climate control, heated driver and front passenger seats, leather-wrapped steering wheel, and programmable Universal Home Remote and power liftgate) | | | | |
| Infotainment Package | – | – | ○ | – |
| Chevrolet Infotainment 3 Plus with Navigation system ¹ ; HD Rear Vision Camera ² ; 120-volt power outlet, SD card reader in front center stack storage area and two type-A USB ports ⁷ in floor console storage bin (requires available Confidence and Convenience Package) | | | | |
| Midnight Edition | – | – | ○ | – |
| 19" gloss Black-painted aluminum wheels, Black bowtie emblems, Black grille and surround, Black foglamp bezel and surround, Mosaic Black Metallic exterior color, outside heated power-adjustable mirrors with integrated turn signal indicators and driver-side auto-dimming feature, Jet Black leather-appointed seating surfaces, auto-dimming inside rearview mirror and memory settings (requires available Confidence and Convenience Package) | | | | |
| Redline Edition | – | – | – | ○ |
| 19" Black-painted aluminum wheels with Red accents, Black bowtie emblems, Redline-specific Black grille, Black Equinox badges with Red outline, Black window surround and Mosaic Black mirror caps (not available with Confidence and Convenience II Package, Infotainment II Package or power sunroof) | | | | |
| Confidence and Convenience II Package | – | – | – | ○ |
| Driver Confidence III Package (Safety Alert Seat ¹ ; HD Surround Vision ¹¹ and Adaptive Cruise Control – Camera ¹¹) and Driver Convenience II Package (heated steering wheel, 8-way power front passenger seat adjuster with 2-way power lumbar control, ventilated driver and front passenger seats, and heated rear outboard seats) | | | | |
| Infotainment II Package | – | – | – | ○ |
| Chevrolet Infotainment 3 Premium with Navigation system ¹ ; HD Radio and Bose premium 7-speaker audio system (requires available Confidence and Convenience II Package) | | | | |

¹ Chevrolet Infotainment System functionality varies by model. Full functionality requires compatible Bluetooth and smartphone, and USB connectivity for some devices. Map coverage available in the United States, Puerto Rico and Canada. ² Go to my.chevrolet.com/learnAbout/bluetooth to find out which phones are compatible with the vehicle. Full Bluetooth feature functionality varies by device, model and software version. ³ Vehicle user interface is a product of Apple and its terms and privacy statements apply. Requires compatible iPhone and data plan rates apply. ⁴ Vehicle user interface is a product of Google and its terms and privacy statements apply. Requires the Android Auto app on Google Play and an Android compatible smartphone running Android 5.0 Lollipop or higher. Data plan rates apply. ⁵ Requires active service plan and paid AT&T vehicle data plan or compatible device with 3G/4G LTE tethering data plan. Visit onstar.com for details and limitations. ⁶ Connected Navigation and Real-time Points of Interest (POI) only available on properly equipped vehicles. Requires paid plan or trial. Map coverage available in the United States, Puerto Rico and Canada. Visit onstar.com for details and limitations. ⁷ Not compatible with all devices. ⁸ If you decide to continue service after your trial, your selected subscription plan will automatically renew thereafter. You will be charged at then-current rates. Fees and taxes apply. Please see the SiriusXM Customer Agreement at siriusxm.com for complete terms and how to cancel, which includes calling SiriusXM at 1-866-635-2349. All fees and programming are subject to change. ⁹ Service varies with conditions and location. Requires active service plan. Data plans offered by AT&T. Visit onstar.com for details and limitations. Availability subject to change. ¹⁰ Standard connectivity available only to original purchaser for 10 years. Services enabled by Connected Access are subject to change. Does not include emergency or security services. Diagnostic capabilities vary by model and service plan. Message and data rates may apply. Requires contact method on file and enrollment to receive alerts. Not all issues will deliver alerts. Visit onstar.com for details and limitations. ¹¹ Read the vehicle Owner's Manual for important feature limitations and information.

DIMENSIONS

| | | | |
|-----------|--------|-------------|-------|
| Length | 183.1" | Width | 72.6" |
| Wheelbase | 107.3" | Front Track | 62.2" |
| Height | 65.4" | Rear Track | 62.2" |

| | |
|-------------------------------------|-------------|
| Head Room (front/rear) | 40.0"/38.5" |
| Head Room with Sunroof (front/rear) | 38.2"/36.9" |
| Leg Room (front/rear) | 40.9"/39.9" |
| Shoulder Room (front/rear) | 57.2"/55.5" |

MAXIMUM CAPACITIES

| | |
|---------------------------|--|
| Fuel tank (approximate) | 14.9 gallons (FWD); 15.6 gallons (AWD) |
| Passenger volume | 103.2 cubic feet |
| Seating | Seats 5 |
| Cargo volume ¹ | 63.9 cubic feet |

EPA-ESTIMATED FUEL ECONOMY

| | |
|-----------------------|------------------------------------|
| 1.5L turbocharged FWD | 26 MPG city/31 highway/28 combined |
| 1.5L turbocharged AWD | 25 MPG city/30 highway/27 combined |
| 2.0L turbocharged FWD | 22 MPG city/29 highway/25 combined |
| 2.0L turbocharged AWD | 22 MPG city/28 highway/24 combined |



Experience Chevrolet Complete Care, a comprehensive coverage, warranty and protection program that comes standard with every new 2020 Chevrolet Equinox lease and purchase. Simply, it is designed around you, to make it easy to keep your Chevrolet like new – and give you the confidence you deserve when you need it most.

Your comprehensive owner benefit program.

Includes one maintenance visit (oil change, tire rotation and multi-point vehicle inspection)?

5 years/60,000 miles³ of Roadside Assistance⁴ and Courtesy Transportation.

3-year/36,000-mile³ Bumper-to-Bumper Limited Warranty.

5-year/60,000-mile³ Powertrain Limited Warranty.

6 years/100,000 miles³ of Rust-Through Protection.

Chevrolet Connected Access⁵ with 10 years of standard connectivity, which currently enables features such as Vehicle Diagnostics and Dealer Maintenance Notification.

1 month of Chevrolet Connected Services⁶ and 1 month of OnStar Safety & Security Plan coverage⁶

NEW VEHICLE LIMITED WARRANTY

3-year/36,000-mile Bumper-to-Bumper Limited Warranty. Chevrolet will warrant each 2020 Equinox from bumper to bumper for 3 years/36,000 miles (whichever comes first; see dealer for details), with no deductible, from the original in-service date of the vehicle, for warrantable repairs that are required as a result of defects due to materials and/or workmanship. Cosmetic corrosion resulting from defects is also covered under the Bumper-to-Bumper Limited Warranty. In addition, rust-through corrosion will be covered for 6 years/100,000 miles (whichever comes first). See dealer for details.

5-year/60,000-mile transferable Powertrain Limited Warranty. Every 2020 Equinox comes with a 5-year/60,000-mile (whichever comes first) transferable Powertrain Limited Warranty. 24/7 Roadside Assistance and Courtesy Transportation are also offered for the duration of the Powertrain Limited Warranty. Please see your Chevrolet dealer for details.

¹ Cargo and load capacity limited by weight and distribution. ² Maintenance visit must occur within first year of vehicle delivery. Service visit consists of ACDelco dexos1™ Full Synthetic Oil and Filter Change/Tire Rotation/MPVI. Does not include air filters. See participating dealer for other restrictions and complete details. ³ Whichever comes first. See dealer for details. ⁴ Roadside service provided by Allstate Roadside Services. Limitations apply. ⁵ Standard connectivity available only to original purchaser for 10 years. Services enabled by Connected Access are subject to change. Does not include emergency or security services. Diagnostic capabilities vary by model and service plan. Message and data rates may apply. Requires contact method on file and enrollment to receive alerts. Not all issues will deliver alerts. Visit onstar.com for details and limitations. ⁶ Connected services include navigation services and Remote Access Plan. Services subject to terms and limitations. Certain services require working electrical system, cell reception and GPS signal. OnStar links to emergency services. Visit onstar.com for details. Availability subject to change.

IMPORTANT INFORMATION

Chevrolet Owner Center (my.chevrolet.com). Everything you need to know. Anything you need to do. Your Chevrolet Owner Center makes it easy. Create your account today to get the most out of your new vehicle. Get special alerts and offers, schedule service, review your maintenance schedule, and view how-to videos specifically for your vehicle. All online, anytime. Visit the Owner Center today to register or take a tour.

Engines. Chevrolet products are equipped with engines produced by GM Global Propulsion Systems or other suppliers to GM worldwide. The engines in Chevrolet products may also be used in other GM makes and models.

Assembly. Chevrolet vehicles and their components are assembled or produced by different operating units of General Motors, its subsidiaries or suppliers to GM worldwide. We sometimes find it necessary to produce Chevrolet vehicles with different or differently sourced components than originally scheduled. Since some options may be unavailable when your vehicle is assembled, we suggest you verify that your vehicle includes the equipment you ordered and that, if there were changes, they are acceptable to you.

Chevrolet Connected Services and OnStar. Connected vehicle services vary by vehicle model and require an active service plan, working vehicle electrical system (including battery), cell reception and GPS signal to function properly. Visit onstar.com for details and limitations.

A note on child safety. Always use seat belts and the correct child restraint for your child's age and size, even with airbags. Even in vehicles equipped with the Passenger Sensing System, children are safer when properly secured in a rear seat in the appropriate infant, child or booster seat. Never place a rear-facing infant restraint in the front seat of any vehicle equipped with an active frontal airbag. See your vehicle Owner's Manual and the child safety seat instructions for more safety information.

Important words about this catalog. We have tried to make this catalog comprehensive and factual. We reserve the right, however, to make changes at any time, without notice, in prices, colors, materials, equipment, specifications, models and availability. Specifications, dimensions, measurements, ratings and other numbers in this catalog

and other printed materials provided at the dealership or affixed to vehicles are approximations based on design and engineering drawings, prototypes and laboratory tests. Your vehicle may differ due to variations in manufacture and equipment. Since some information may have been updated since the time of printing, please check with your Chevrolet dealer for complete details. Chevrolet reserves the right to lengthen or shorten the model year for any product for any reason or to start and end model years at different times. Certain vehicle features may lose their usefulness over time due to obsolescence from technological changes. Unless otherwise noted, all claims based on GM Compact Crossover segment and latest available competitive information. Excludes other GM vehicles.

Fleet orders. Some standard content may be deleted on fleet orders. See dealer for details.

Chevrolet ownership experience. Chevrolet is committed to enhancing the vehicle shopping and ownership experience through a wide array of programs. Visit chevrolet.com to build and price, find a vehicle, request a quote, compare vehicles, find financial tools or track your vehicle order. You'll also find information about 24-hour Roadside Assistance, Courtesy Transportation, Customer Assistance, GM Mobility, safety and current incentives.

Chevrolet.com/safety. Chevrolet is committed to keeping you and your family safe – from the start of your journey to your destination. That's why every Chevrolet is designed with a comprehensive list of safety and security features to help give you peace of mind.

GMmobility.com (1-800-323-9935). GM MobilitySM offers financial assistance for eligible adaptive equipment to make automotive travel easier for persons with disabilities or special transportation needs. To learn more about special GM Mobility offers, visit gmmobility.com.

The BuyPower Card. The Chevrolet BuyPower Card – Every purchase you make with the BuyPower Card from Capital One* helps you earn toward an eligible new Chevrolet, Buick, GMC or Cadillac vehicle. There's no limit on the amount you can earn or redeem, and your Earnings don't expire. Visit chevroletbuypowercard.com/catalogs.

* Capital One, N.A. is the issuer of the BuyPower Card. General Motors ("GM") is responsible for the operation and administration of the Earnings program.



GM, the GM logo, Chevrolet, the Chevrolet logo, and the slogans, emblems, vehicle model names, vehicle body designs and other marks appearing in this catalog are the trademarks and/or service marks of General Motors, its subsidiaries, affiliates or licensors. ©2019 OnStar LLC. All rights reserved. Sirius, XM, SiriusXM and all related marks and logos are trademarks of Sirius XM Radio Inc. The Bluetooth word mark is a registered trademark owned by Bluetooth SIG, Inc., and any use of such mark by Chevrolet is under license. Bose is a registered trademark of the Bose Corp.

©2019 General Motors. All rights reserved. June 2019

FIND NEW ROADS™

CHEVROLET.COM

