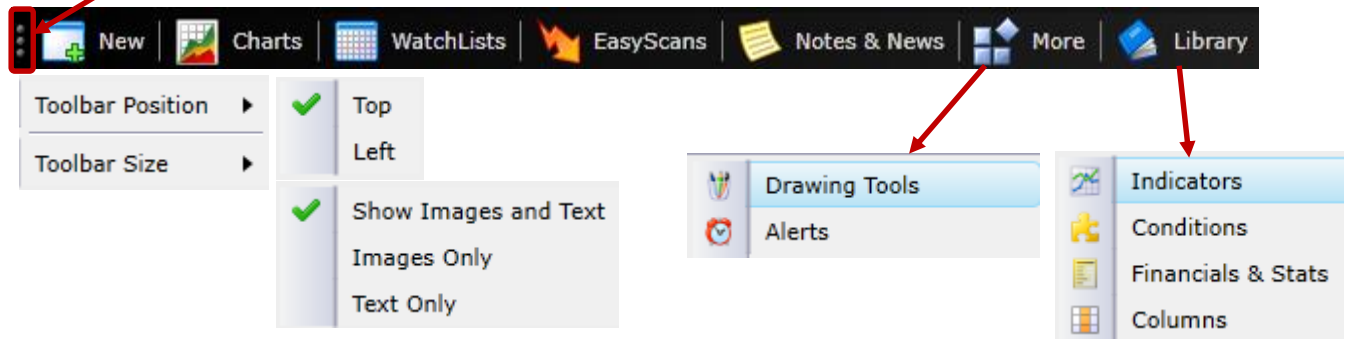


Getting Started with TC2000 Version 12.3

Main Toolbar

By default, the main toolbar is positioned across the top of your screen. You may change the position and button sizes of the toolbar by clicking the three vertical dots on the left side of the toolbar.

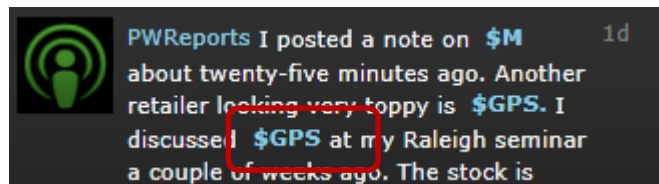
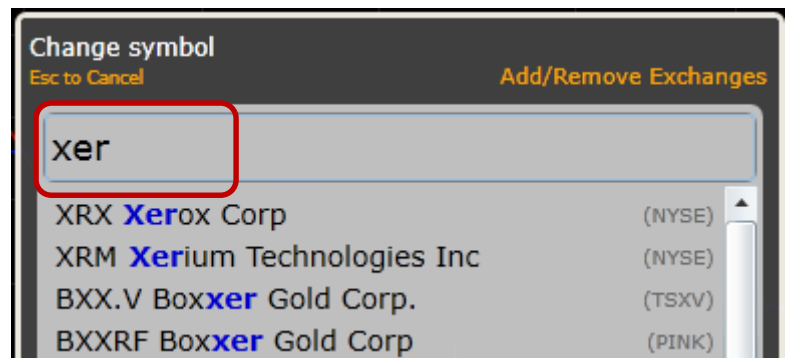
Notice some items have moved to the **More** and **Library** buttons.



Changing Symbols

You can begin searching for any symbol or company name by typing any letter from A-Z. The search dialog will automatically pop up. Type any part of a ticker symbol or company name.

While in a watchlist, press the **<Spacebar>** to move down through the next items. Press **<Ctrl-Spacebar>** to move up through the previous items. You may also use the up and down arrow keys to perform the same operation.



Symbols that start with a **\$** in news and notes are clickable links that will take you directly to a stock.

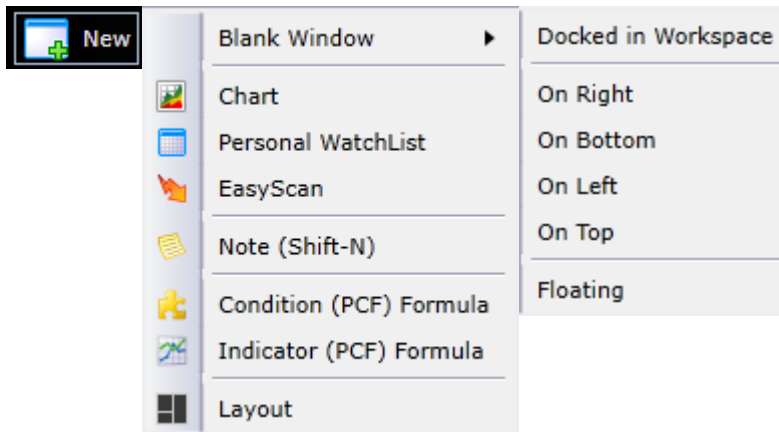
Backspace Key

Press the **<Backspace>** key to go back through the last symbols you were viewing. This is handy for jumping to different stocks in other watchlists or in news stories and not losing your place. You can always return to what you were doing. You may hit the **<Backspace>** key as many times as you'd like to review all your recent stocks.

New Button

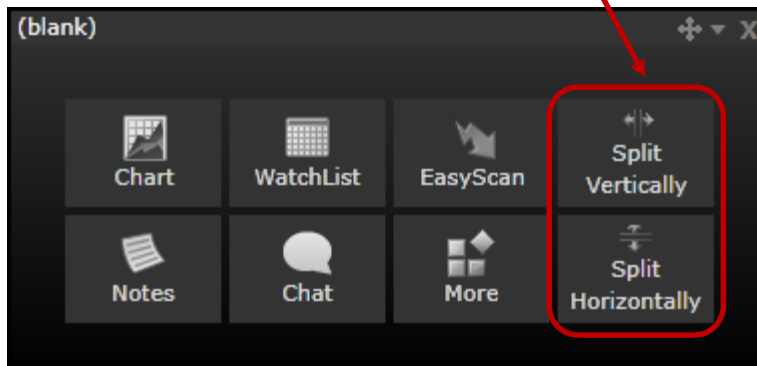
The New button on the main toolbar is a quick, convenient way to:

- Add a new window to your layout (blank window, chart, WatchList or EasyScan)
- Write a new note
- Write a new Personal Criteria Formula (PCF) for an indicator or condition
- Start a new layout

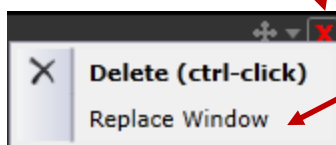


New Blank Window

A new blank window comes with its own menu letting you choose what you'd like to put inside the window. Notice that you can also split the window into more blank windows letting you create your own layouts.

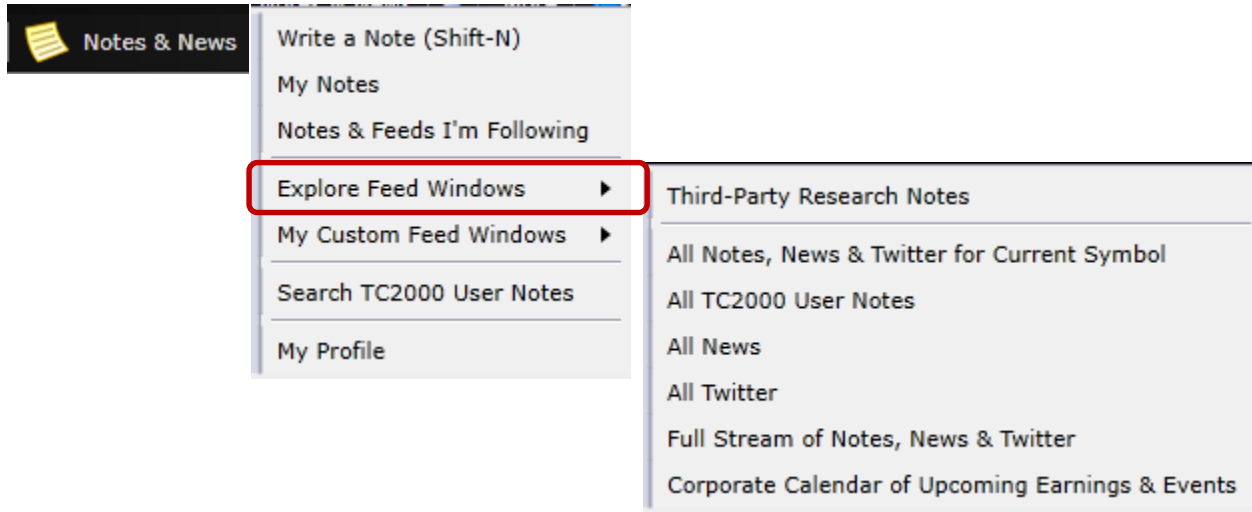


Tip: When clicking the **X** to delete a window, choose **Replace Window**. You'll get a blank window with the same starter menu as above. This makes it easy to quickly replace the contents of any window in your layout without having to worry about messing up your window layout.



Notes & News

The **Notes & News** button on the main toolbar gives you access to your own notes as well as multiple news feeds, online Twitter stories, third-party research, and notes written by other users. You can explore a variety of preconfigured feed windows and choose the sources you wish to follow.

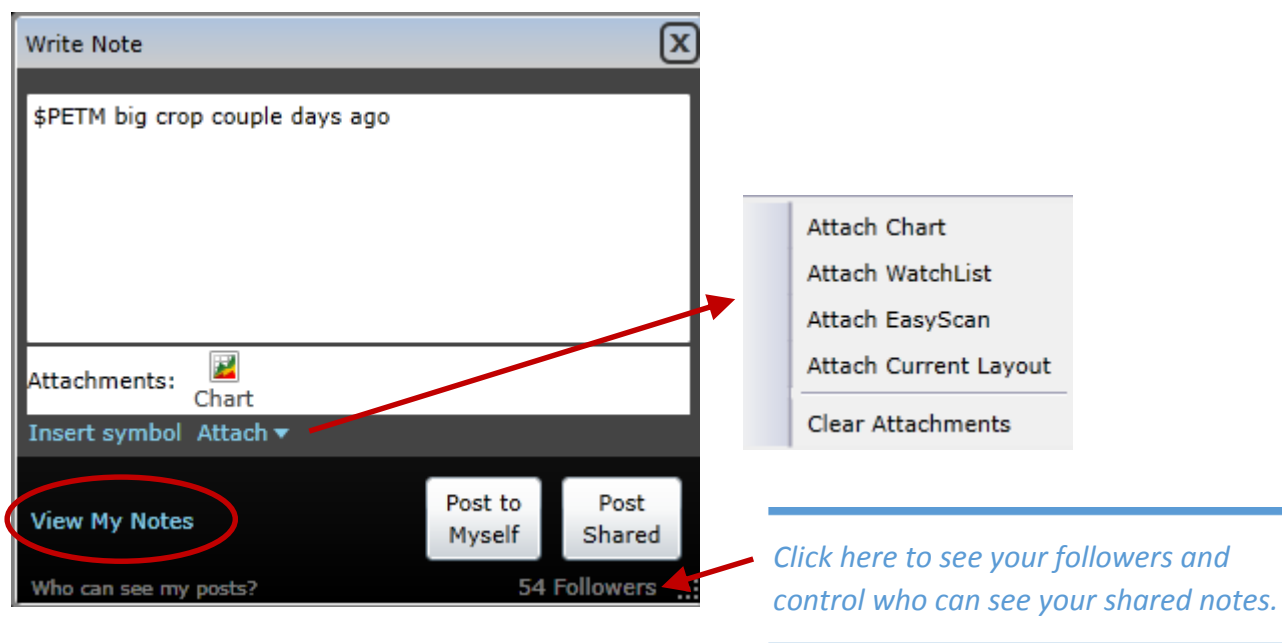


Worden Notes & Third-Party Research

As of January 2, 2013, Peter Worden's notes are published in Third-Party Research through his new company PWRReports, LLC. In addition, you'll find content from several other market professionals.

Writing a Note

Press **<Shift-N>** to write a note. The chart you are currently viewing will automatically be attached to your note. You may also attach other charts, watchlists, EasyScans and layouts to your note. The note can be posted to yourself (private) or shared to your followers.



Printing Charts

Press **<Shift-P>** or right-click on a chart to print.

Maximizing a Window

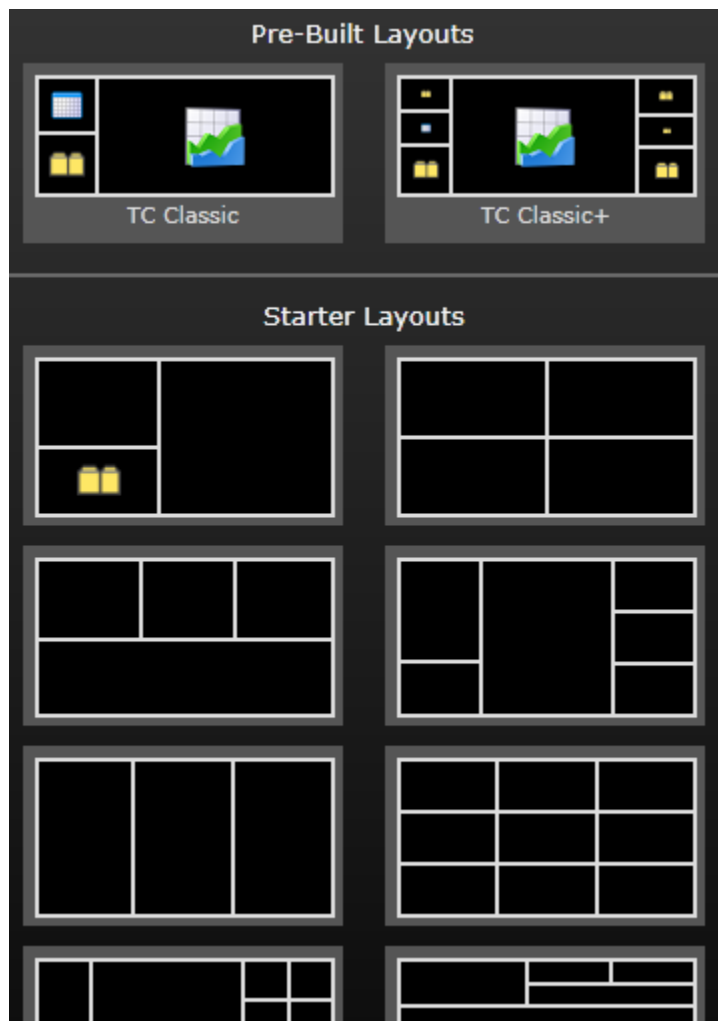
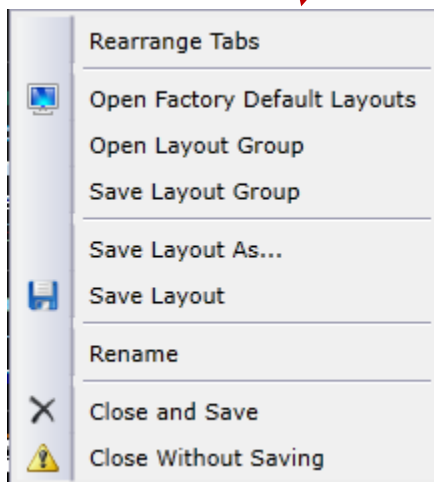
Click inside of a window and press **<Shift-L>** to maximize it. Press **<Shift-L>** again to restore it. Another way to maximize a window is to hold down the **<Ctrl>** key and click the maximize button on a window. Other ways to restore are to press **<Escape>** or click the restore button in the upper right.

Opening, Changing, Saving and Creating Layouts

On the bottom left are tabs for each of your open layouts. Right click on a tab to access its menu. To add a new layout, click the last tab (new layout). Select from a pre-built layout, a starter layout or one of your saved layouts.



Right click on tab for menu



TC Classic Layouts

Two of the pre-built layouts that come as the factory default layouts are TC Classic and TC Classic+. You can open them from the above menu. TC Classic looks and feels very much like the original TeleChart dating back through the DOS and early Windows days. It gives you the three primary pieces that have made TC2000 famous for simplicity ... a watchlist, a great looking chart and all the news and notes about the company you are studying. The TC Classic+ adds a market summary, index components, industry lists, Platinum chat and personal watchlists for favorites and flagged items. These will be covered more in other docs, but are fantastic ways to use TC2000 out of the box.

Moving, Tabbing and Rearranging Windows

To move or tab a window to another location, click the **Move** button in the top right of the window. The selected window will highlight with a red border and the layout will go into target mode. Select the new location of the window by clicking one of the arrows, tab buttons or swap buttons.

Use the pull-down menu for more layout options.

The screenshot displays the TC Classic+ interface with a central chart for YHOO. The chart shows a price of 19.64 and a volume of 13.2M. The interface is divided into several panels, each with a 'Tab Here' label and a 'Swap' button. A red box highlights the 'Move' button (a blue cross) in the top right corner of a window. A pull-down menu is open, showing options: Move Window..., New Tab, Duplicate this Window, New Window, Maximize (Shift-L), and Float. Blue arrows indicate the movement of windows between panels.

Flag	Symbol	% Change
▼	ZMH	+0.17
	Zimmer Holdi	
▼	ZTON	+0.23
	4 of 497 Items in WatchList	

Flagging Stocks

Press **<Shift-F>** to flag or unflag the stock you are viewing. You may also click the flag icon in a watchlist. You can multi-select items in a watchlist using **<Shift-Click>**. Then **<Shift-F>** to toggle the flags on the entire group. Click the **WatchLists** button on the main toolbar and select the **Flagged Items** watchlist. As you flag and unflag stocks, you'll see them get added and removed from this list.

Flag	Symbol	% Change	Price
▼	SIRI Sirius Xm Rad	-0.68%	2.90
▶	MU Micron Technic	+0.65%	6.22
▼	DELL Dell Inc	-0.88%	10.19
▶	ATVI Activision Bliz	-0.75%	10.59
▼	SPLS Staples Inc	+0.27%	11.22
▼	AMAT Applied Mater	-0.35%	11.35
▼	NVDA NVIDIA Corpe	-0.65%	12.16

All Flagged Symbols			
Flag	Symbol	Company	% Change
▶	EMKR	Emcore Corporation	+0.70%
▶	IEX	IDEX Corp	-0.06%
▶	MU	Micron Technology In	+0.65%
▶	NCR	Ncr Corp	-1.73%
▶	ROC	Rockwood Holdings I	+0.04%
▶	RUT-X	Russell 2000	-0.18%

Copy Symbols to My Favorites WatchList

Press **<Shift-V>** to copy the stock you are viewing into your **My Favorites** WatchList. This also works for multi-selected items from watchlists.

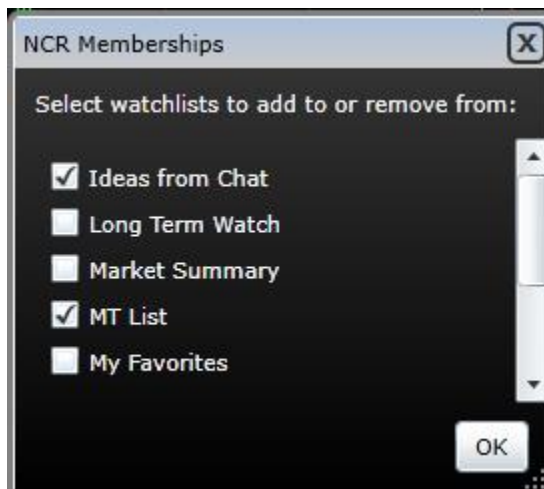
Copy Symbols to Personal WatchLists

Press **<Ctrl-C>** to copy the stock you are viewing in to a personal watchlist. This also works for multi-selected items in a watchlist. You will be prompted to select the personal watchlist to copy the symbol/s in to. Copy to the clipboard if you wish to paste later to another list or another program. Notice you may also create a new personal watchlist on the fly.

Copy 5 symbols to:
Type to search
Copy to Clipboard (New Personal WatchList)
Ideas from Chat
Long Term Watch
Market Summary
MT List
My Favorites

WatchList Memberships

Press **<Ctrl-M>** to see which personal watchlists the current symbol is included in. Click the checkboxes to instantly add and remove the symbol from any of your personal watchlists.

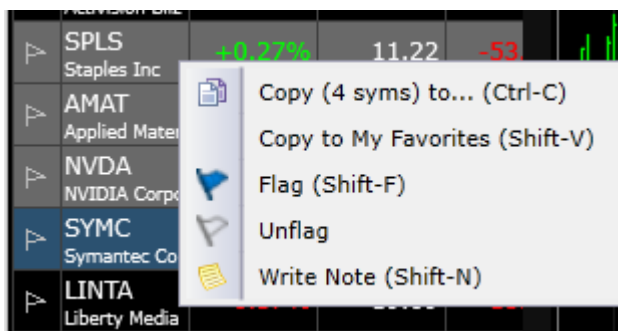


Multi-Select Symbols in a WatchList

Click on an item in a watchlist to select it. While holding the **<Shift>** key down, click on another item. All the items in between will highlight as a group. Another way to multi select individual items is to hold the **<Ctrl>** key down while clicking on items. Once selected, all operations can be applied to the selected group including flagging **<Shift-F>**, copying **<Ctrl-C>**, adding to favorites **<Shift-V>** and writing notes **<Shift-N>**.

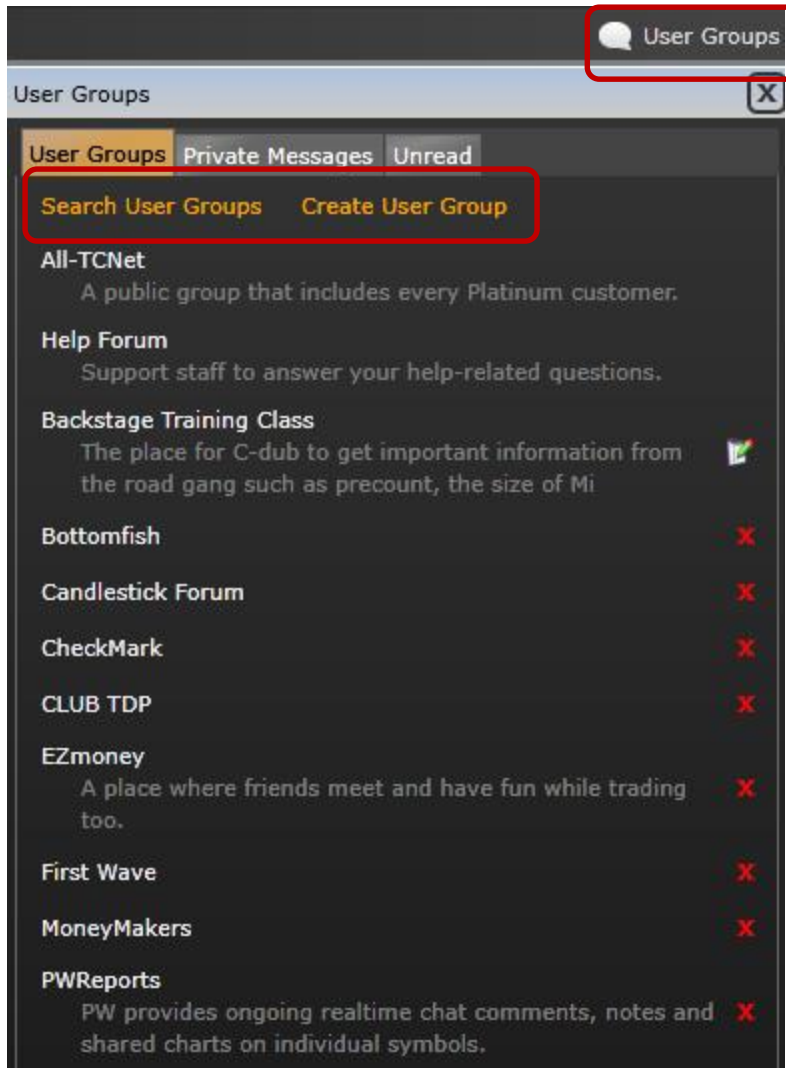
Right-Click Menu on WatchList

All flagging, copying and personal watchlist maintenance can be accessed by right clicking on an item or group of items in a watchlist.

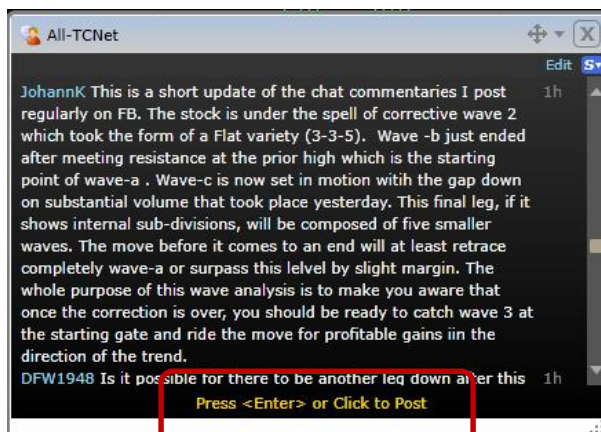


Platinum User Groups

User Groups are available to Platinum customers. Click the User Group button in the top right corner of TC2000. All Platinum customers are automatically members of the All-TCNet group. You can start new public and private user groups, search for groups and send private messages to individual people.



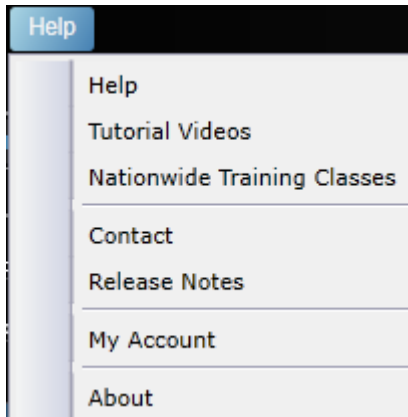
To write a comment inside of a user group, click anywhere in the group window and press **<Enter>**. You can attach charts, watchlists, EasyScans and layouts for any member of the group to open.



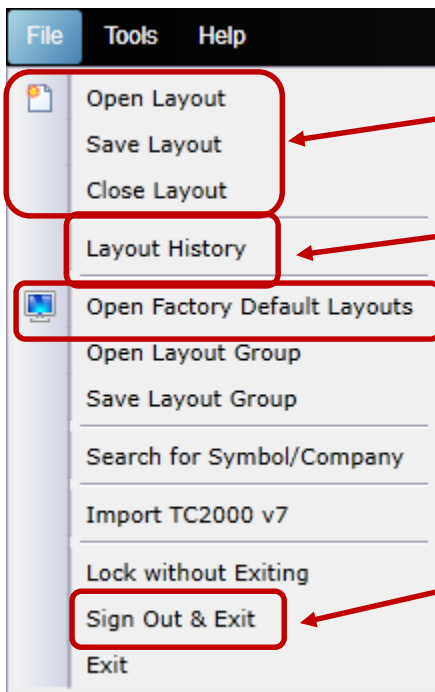
Tutorial Videos

Click Help | Tutorial Videos

Typical videos are 5 minutes and focus on a specific topic. They are a great way to learn all the nuances of TC2000. New videos are constantly being added. Also try to attend a live training class in a city near you. Morning sessions are only 2 ½ hours and focus on basic to intermediate material. The afternoons focus on intermediate to advanced material.



File Menu



Manually open and save your layouts.

Access automatic backups of all your layouts used from any computer.

Reset TC2000 back to the original layouts when you first started. You can still go back to layouts you've created in the layout history.

Always sign out when using TC2000 from a public computer.