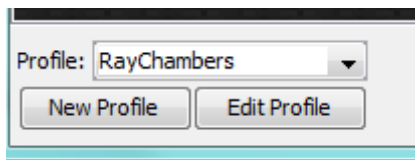
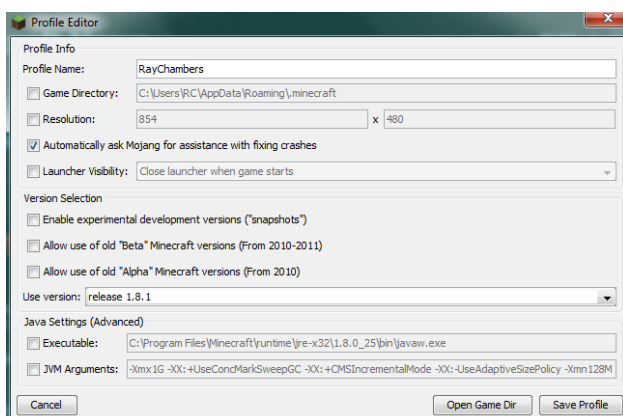


How to set up the Computer Craft MOD in Minecraft:

This tutorial assumes that you have already downloaded and installed Minecraft 8.1 from the website.



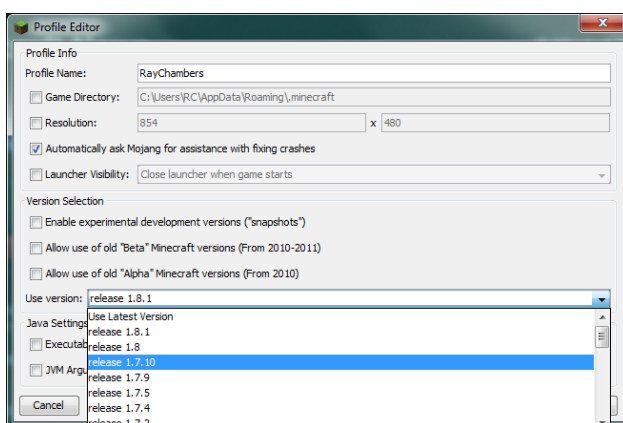
Open up Minecraft and in the bottom left corner of the screen, you will be required to edit the profile.



Once you've opened up the **edit profile** menu, you'll notice the following screen. This shows the version you've set up.

You should notice that you've already got Minecraft version 1.8.1.

For the purpose of using ComputerCraft we're going to just the drop down menu to take a step back to a previous version of Minecraft.



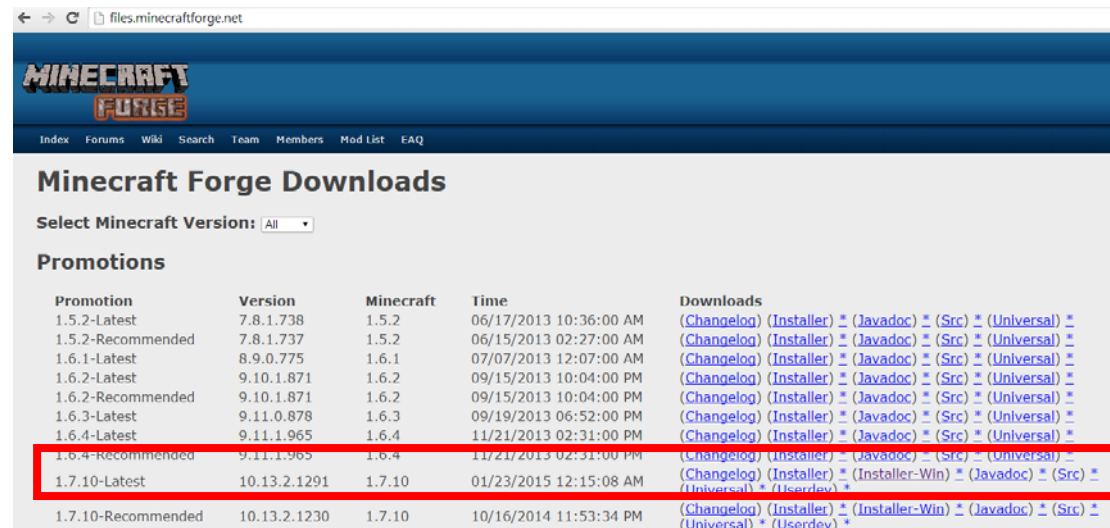
Change the drop down menu to 1.7.10 and save your profile.

Once you have saved your profile. **You are required to run the game.**

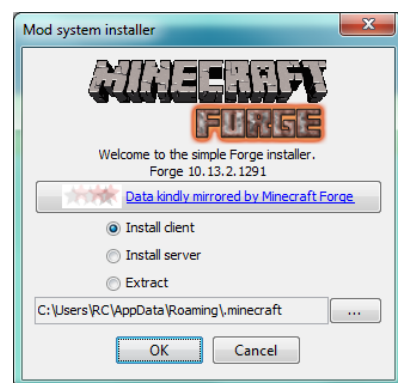
Now you're going to need to make sure that you download the Mod support. Make sure that you've quit Minecraft and you will need to go to the website on the next page of this document.

Download Minecraft Forge. You will need to download the 1.7.10 version of the installer.

<http://files.minecraftforge.net/>

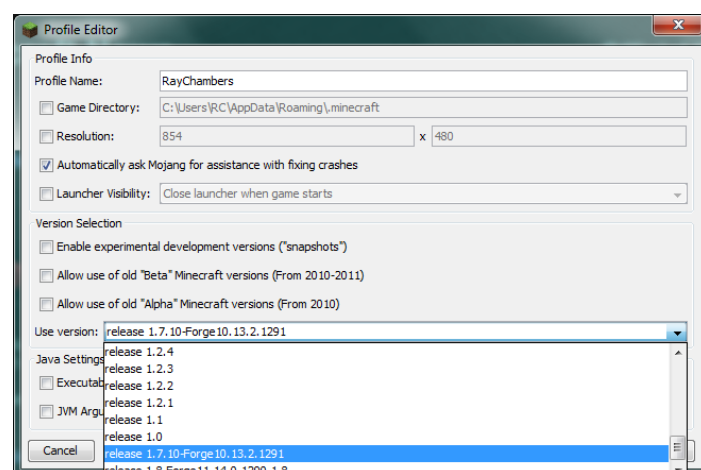


Promotion	Version	Minecraft	Time	Downloads
1.5.2-Latest	7.8.1.738	1.5.2	06/17/2013 10:36:00 AM	(Changelog) (Installer) * (Javadoc) * (Src) * (Universal) *
1.5.2-Recommended	7.8.1.737	1.5.2	06/15/2013 02:27:00 AM	(Changelog) (Installer) * (Javadoc) * (Src) * (Universal) *
1.6.1-Latest	8.9.0.775	1.6.1	07/07/2013 12:07:00 AM	(Changelog) (Installer) * (Javadoc) * (Src) * (Universal) *
1.6.2-Latest	9.10.1.871	1.6.2	09/15/2013 10:04:00 PM	(Changelog) (Installer) * (Javadoc) * (Src) * (Universal) *
1.6.2-Recommended	9.10.1.871	1.6.2	09/15/2013 10:04:00 PM	(Changelog) (Installer) * (Javadoc) * (Src) * (Universal) *
1.6.3-Latest	9.11.0.878	1.6.3	09/19/2013 06:52:00 PM	(Changelog) (Installer) * (Javadoc) * (Src) * (Universal) *
1.6.4-Latest	9.11.1.965	1.6.4	11/21/2013 02:31:00 PM	(Changelog) (Installer) * (Javadoc) * (Src) * (Universal) *
1.6.4-Recommended	9.11.1.965	1.6.4	11/21/2013 02:31:00 PM	(Changelog) (Installer) * (Javadoc) * (Src) * (Universal) *
1.7.10-Latest	10.13.2.1291	1.7.10	01/23/2015 12:15:08 AM	(Changelog) (Installer) * (Installer-Win) * (Javadoc) * (Src) * (Universal) * (Userdev) *
1.7.10-Recommended	10.13.2.1230	1.7.10	10/16/2014 11:53:34 PM	(Changelog) (Installer) * (Installer-Win) * (Javadoc) * (Src) * (Universal) * (Userdev) *



Once you've downloaded the Modification, you'll need to open and install it. It should look like the image on the left.

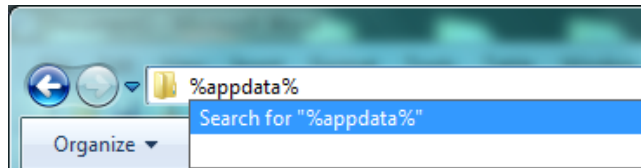
You can run it on your client or on a server but we're going to do it for the client to begin with.



Open up Minecraft again, this time you will need to edit the profile and look for the Forge version of Minecraft.

Before you can apply any modifications to your game, you will need to run **Release 1.7.10 Forge**.

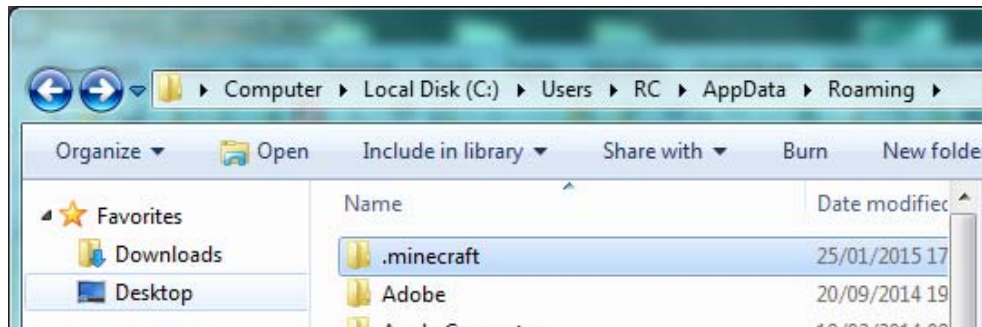
The next page will show you how to access the **mods** folder and you will be able to download the specific **mod** for computers in Minecraft.



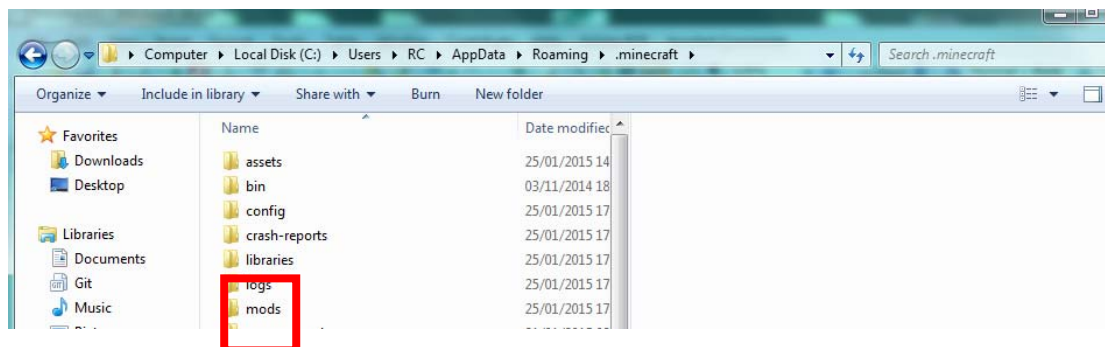
Load up your documents folder and type in the following:

%appdata%

You will now notice a large host of application folders. **Look for .minecraft**



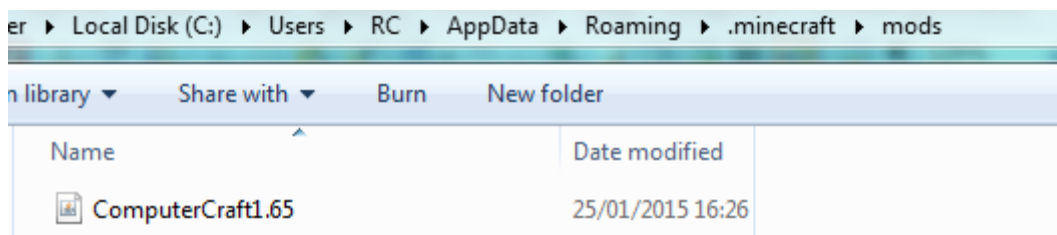
Once you've opened this folder, you'll need to look for the mods folder



Inside the mods folder, you'll need to place a copy of the following file:

<http://minecraft.curseforge.com/mc-mods/67504-computercraft/files/2216236/download>

Your mod folder should now look like this:



Repeat this process for other mods depending on the version of **Minecraft**.