

High School & Beyond Plan Implementation and Planning Tools

<http://www.k12.wa.us/SecondaryEducation/CareerCollegeReadiness/default.aspx>



WA Comprehensive School Counseling Essentials

- Academic Achievement: Evidence-Based School Counseling
- Career and College Readiness: Personalized Plan for All Students
- Social Emotional Support: Student Support Resources

Every student ready for career, college and life



Updated: March 26, 2018

Statewide Efforts and Partnerships: Career and College Readiness and Planning



- **Legislature-** Increased focus for student's pathway for graduation and updates to HSBP (HB 2224, HB 2686)
- **WA School Counselor Association:** School Counselor and Guidance Program Model, Summer PD
- **WA Student Achievement Council:** College Bound Scholarship, 12th Year Campaign, and more
- **WA College Access Network:** College Knowledge, College Bound Scholarship Repledge, College Signing Day
- **WA State Board of Education:** Resources for HSBP, 24-credits, and CCR
- **WA State Board for Community and Technical Colleges:** Guided Pathways, Bridge to College,
- **AWSP:** 24-credit support and leadership
- **WA Council:** Events for school counselors, high school and middle school students
- **WA Workforce Training and Education Coordinating Board:** Career Bridge, Where Going?
- **WA State Labor and Industries:** Apprenticeships
- **WA Employment Security:** Internship Platform

OFFICE OF SUPERINTENDENT OF PUBLIC INSTRUCTION





High School & Beyond Plan: Why?



- Helping students deepen their knowledge of themselves
- Improving their understanding of postsecondary options
- Better connecting their goals to educational coursework with career interests or college major
- Taking part in long-term planning for life after school



College and Career for All!

<http://www.k12.wa.us/safs/INS/2242/2242.asp>

RCW 28A.600.045

Comprehensive guidance and program planning for all students

- Guidance curriculum
- Regular meetings with students
- Student-led conference
- Data collection
- OSPI provides support



OFFICE OF SUPERINTENDENT OF PUBLIC INSTRUCTION

3/27/2018



Washington's Public Schools: Career & College Pathways for Every Student

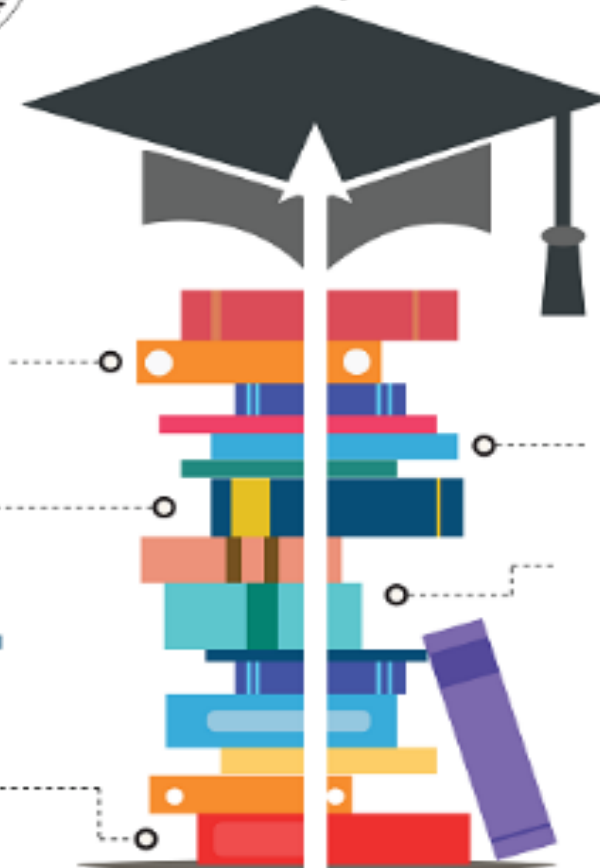
Relevant Coursework
Courses taken contribute to each student's pathway.

Grade 11
The 10th grade assessment results help inform an updated High School & Beyond Plan.

Middle School
High School & Beyond Plan developed for student.

Student/Advisor Partnership
Student works with advisors to determine college or career pathway.

Grade 10
Student takes Smarter Balanced Assessment.



Highlights of 2017-18 Assessment Changes

<http://www.k12.wa.us/assessment/GraduationAlternatives/GraduationAlternativesApplication.aspx>

- Delays **Science assessment** as graduation requirement until 2021, starting with Class of 2017
- Requires state assessment to move from **11th grade to 10th grade**
- **Discontinued COE** for alternative assessment
- **Expedited Waiver for State Assessment** - an expedited appeal process for eligible students in the classes of 2014 through 2018 to have assessment graduation requirements waived. This requires students to demonstrate the skills and knowledge to meet the high school standards and to successfully achieve the college or career goals established in his or her high school and beyond plan.



OFFICE OF SUPERINTENDENT OF PUBLIC INSTRUCTION

3/27/2018

New High School & Beyond Plan New Requirements Start Now

(HB 2224 in 2017 and HB 2686 in 2018)

- Plan begins in **7th or 8th Grade** with Career Interest Inventory
- **Must be provided in students' top two non-English language spoken in district**
- Identification of **career goals** by skills and interest assessment
- Identification of **education goals**
- **Four-year Course Plan** that aligns with career and educational goals with Personalized Pathway
- Information about **Dual Credit Programs** and **College Bound Scholarship**
- By end of 12th grade, **activity log or resume**
- **Review** of transcript and progress
- **State assessment** included



OFFICE OF SUPERINTENDENT OF PUBLIC INSTRUCTION

3/27/2018

What is your Role with HSBP?

1. How are you implementing? What resources do you use?
2. Who is responsible for completion for all elements?
3. Do you have advisory or other place for the “How”?
4. How do you transition from MS to HS?
5. Do you have Student-led conference?
6. How is Registration connect to HSBP- Personalized Planning?



Vertical Teaming and Transition



Middle School	High School
Foundational Work	Transition work
Develop sense of self and community	Development of four-year plan for High School & Beyond Plan
Readiness for high school	Postsecondary plan

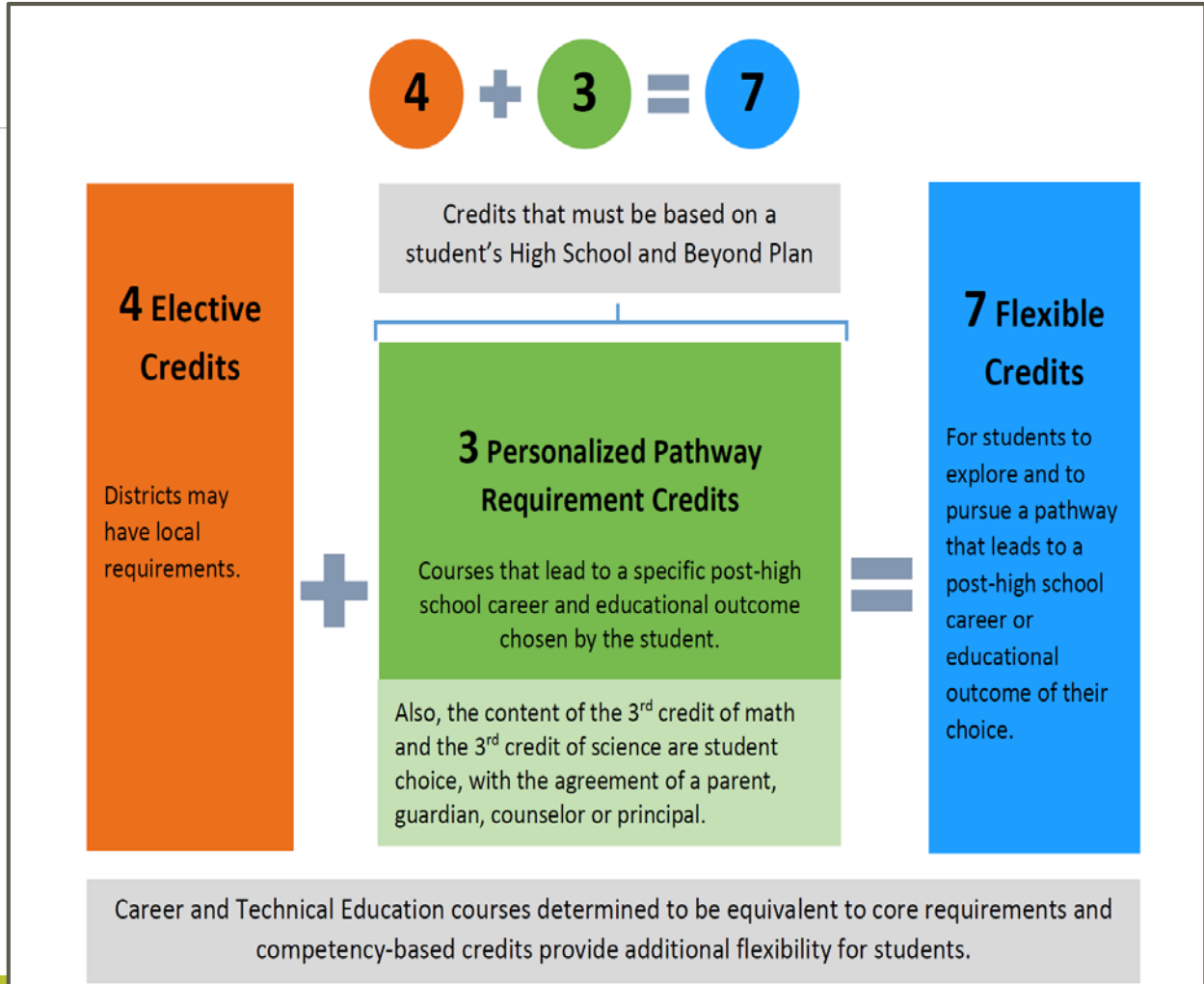
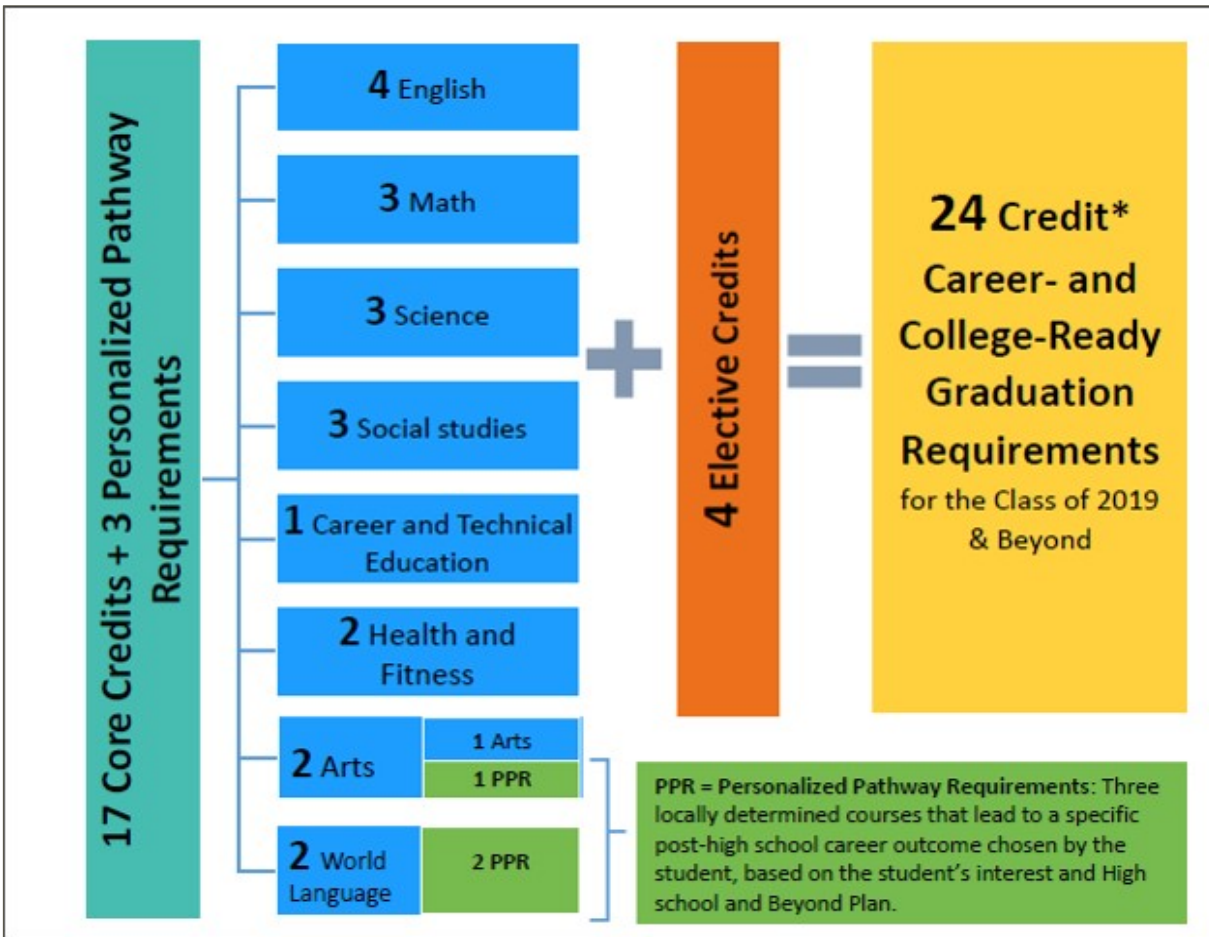


- ✓ How can you make transition “seamless” from middle school to high school?
- ✓ What are some ways to organize leadership teams from middle school and high school to discuss transition activities? Meeting times? Early spring? Schedule?
- ✓ How can using career guidance lessons be coordinated between elementary, middle school and high school? Shared curriculum map?
- ✓ How can the High School & Beyond Plan transfer with ease from middle school to high school?
- ✓ How does the middle school work become the High School & Beyond Plan?
- ✓ What are ways to assist parents to gain a better understanding of career guidance activities and transition?



24-Credit Career and College Ready Diploma

<http://www.sbe.wa.gov/graduation.php>



Personalized Pathway: Intentional Choices



There are multiple pathway options based on their career interests for students that include to enroll in that includes community colleges, technical college programs, four year colleges, industry standard certificate programs, apprenticeship programs, internships, on the job training, and military training programs. Many of these options can start first with looking at the career clusters to see what they like.

When students are given individual guidance along the way, they can discover, who they are, and what they want to become. While educators and school counselors can guide students by providing information about opportunities and help with their plan to achieve their goals, students need to first look at what they are interested in doing. Developing a meaningful and intentional personal plan of action takes time and energy to help student make connections with postsecondary options.



How can we help every student develop a meaningful plan?



High School & Beyond Plan

- Begins in 7th or 8th Grade

- Required Elements

+Career Interest Inventory

+ID of Education Goals

+4-Yr Course Plan:
Personalized Pathway

+Activity Log or Resume

- Interventions, academic support, and additional courses for students who have not met standard SBAC



High School & Beyond Plan

Name: _____ Grade: (circle) 7,8,9,10,11,12

School: _____ Graduation Year: _____

With the passage of ESHB 2224, there are new requirements for the High School and Beyond Plan starting in 2017-18 or all students. The High School & Beyond Plan (HSBP) revolves around three questions: **Who am I?, What can I become?, How do I become that?** This plan is a graduation requirement that helps all students get the most out of high school and think about their future. **Starting in 7th or 8th grade** you will complete a Career Interest Inventory and continue developing and revising this plan through the 12th grade. You will work with your school counselor, advisor and/or teachers to create your own individual plan, called a "personalized pathway", and will revise your plan annually to adjust for changing interests or postsecondary plans (what you plan to do the year following graduation from high school). Your post high school goals may include four-year colleges or universities, two-year community or technical colleges, apprenticeship programs, industry standard certificate programs, military training, or on-the-job training.

Required elements of your High School & Beyond Plan

1. Identification of your **career goals** using a **career interest inventory**.
2. Identification of your **educational goals**.
3. A **four-year course plan** with an individualized **personalized pathway** that fulfills graduation requirements and aligns with your career and educational goals.
4. By the end of 12th grade, a **current résumé or activity log**.
5. If you have not met standard on your state assessment, this plan **must include interventions and academic support, additional courses, or both** that will enable you to meet the high school graduation requirements.

The High School & Beyond Plan is used to guide your high school experience and prepare you for postsecondary education or training and career. This plan is updated each year to reflect your assessment results, review of your high school transcript, and assess progress toward identified goals. Your plan can be revised as necessary for changing interests, goals, and needs.

START TO CREATE YOUR PROFILE

Who Am I?	What Can I Become?	How Will I Become That?

1

MY PLAN

1. CAREER INTEREST INVENTORY

A career interest inventory or assessment can be taken each year to learn about your career and educational aspirations.

- ▶ Career Bridge: http://www.careerbridge.wa.gov/Survey_Cluster.aspx
- ▶ Career One Stop: <https://www.careeronestop.org/toolkit/careers/interest-assessment.aspx>
- ▶ Advance CTE: Interest Survey for Career Clusters: <https://careertech.org/student-interest-survey>
- ▶ US Occupational Outlook Handbook: <https://www.bls.gov/oooh/>

MY TARGETED CAREER INTERESTS:

2. EDUCATIONAL GOALS

Using your career interests to guide you, educational goals for what you want to do after high school can be explored using the following postsecondary pathway links.

- ▶ 4-Year Public Colleges in WA state: <http://www.wsac.wa.gov/college-admissions>
- ▶ 2-year Community or Technical Colleges in WA state: <https://www.sbctc.edu/our-colleges/search-college-programs/default.aspx>
- ▶ 4-Year and 2-Year Colleges (Out of state/Private)
 - College Board's Big Future: <https://bigfuture.collegeboard.org/>
 - Peterson's College Information Guide: <https://www.petersons.com/college-search.aspx#/sweeps-modal>
- ▶ Programs of Study: <http://www.k12.wa.us/careertech/ProgramsofStudy.aspx>
- ▶ Industry Standard Certificate Program and Career Clusters: <http://www.k12.wa.us/CareerTechEd/clusters/>
- ▶ Apprenticeship Programs: <http://www.lni.wa.gov/tradeslicensing/apprenticeship/>
- ▶ Apprenticeship Program of Study: <http://www.k12.wa.us/careertech/pubdocs/ProgramsofStudyandApprenticeshipAlignmentGrid.pdf>
- ▶ Military Training: <http://todaysmilitary.com/>

MY EDUCATIONAL GOAL(S):

(more than one may be selected):

2

Student Profile and Overview



Who Am I?	What Can I Become?	How Can I Become That?



Element 1: Career Interest Inventory to Identify Career Goals

- ❑ Begins in 7th or 8th Grade with Career Interest Inventory
- ❑ Use Career Interest Inventory to Identify Career Goals
- ❑ Re-visit plan each year

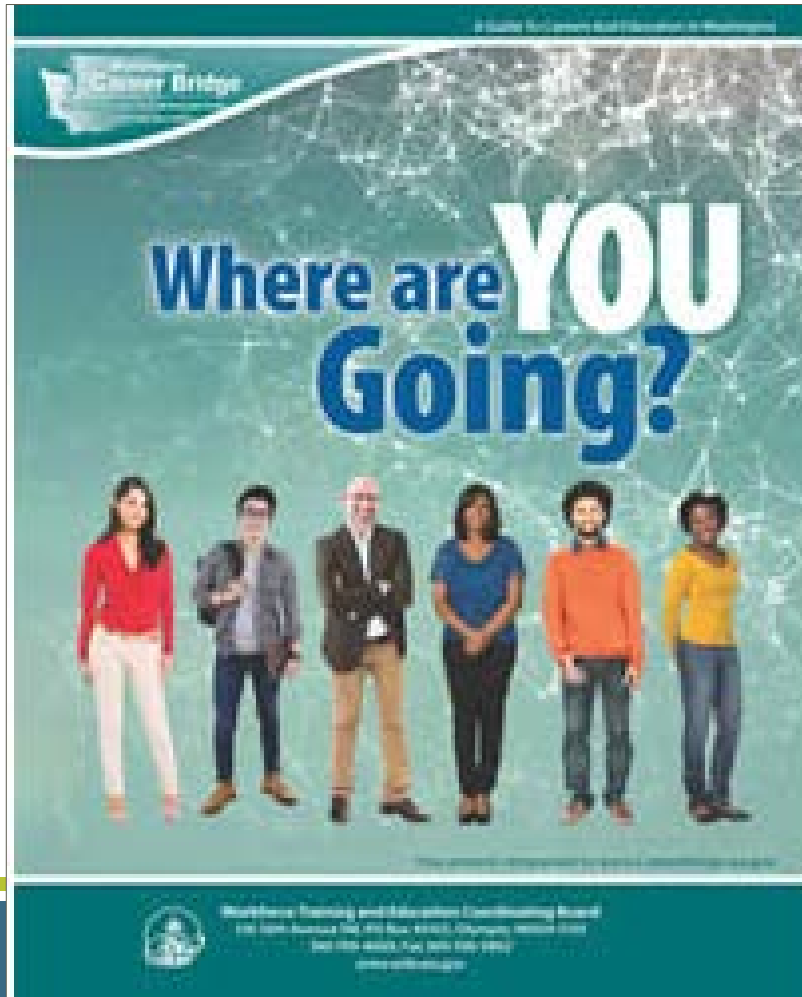


- Career Bridge: <http://www.careerbridge.wa.gov/>
- Career One Stop: <https://www.careeronestop.org/toolkit/careers/interest-assessment.aspx>
- Advance CTE: Interest Survey for Career Clusters: <https://careertech.org/student-interest-survey>
- US Occupational Outlook Handbook: <https://www.bls.gov/ooh/>



Career Bridge and Where Are You Going?

<http://www.careerbridge.wa.gov/>



The screenshot shows the Washington Career Bridge website. The header features the "Washington Career Bridge" logo and the tagline "Find the education & training you need to get the job you want". A "Sign in / Register" link is in the top right. A left sidebar lists navigation options: "Explore Careers", "View Job Trends", "Find Education", "Pay for School", and "Eligible Training Provider List". Below the sidebar is a "Printed guide available" link with a small guide icon. The main content area has three columns: "Explore Careers >" with a "TAKE A QUIZ" button, "View Job Trends >" with a "FIND OUT MORE" button, and "Find Education >" with a "START YOUR SEARCH" button. Each column includes a representative image (a scientist, a welder, and a graduate) and a short description. At the bottom, a banner reads "Washington's one-stop source for career and education planning."

Career Interest Assessment

<p>R</p> <p>Realist</p>	<ul style="list-style-type: none"> Do you like practical hands on activities? Do you like working with tools? Do you like working with equipment and machinery? Do you like building things? Do you like making things better? Do you like working outside? Do you like growing things? 	<p>A Doer. Doers tend to follow tradition, are practical with of common sense. Realistic in their approach, doers usually like to get things done.</p> <p>Possible careers might be: <i>Hospitality, Tourism, Cookery, Land & Conservation, Horticulture, Mining & Resources, Automotive, Carpentry, Electrical, Engineering, Welding, Bricklaying, Building & Construction, Plumbing, Hairdressing, Beauty Therapy, Health & Safety.</i></p>
<p>I</p> <p>Investigator</p>	<ul style="list-style-type: none"> Are you analytical, intellectual and explorative? Do you like science? Do you like conducting research? Do you like analysing and solving problems? Do you have good maths skills? 	<p>A Thinker. Thinkers tend to be independent and are often curious about how things work. They generally have an investigative approach to life.</p> <p>Possible careers might be: <i>Business & Computing, Accounting, Land & Conservation Management, Horticulture, Mining & Resources, Automotive, Carpentry, Wine, Electrical, Engineering, Welding, Health & Safety, Applied Science, Surveying, Web Based Technologies.</i></p>
<p>A</p> <p>Artistic</p>	<ul style="list-style-type: none"> Are you creative, original in thought and have an interest in self-expression? Do you like activities like art, drama, dance, music or creative writing? Do you like using your imagination? Do you have an interest in visual arts, language and writing? 	<p>A Creator. Creators usually prefer to follow careers that are more independent and less structured and are generally thought of as being creative with an artistic approach to life.</p> <p>Possible careers might be: <i>Hairdressing, Interior Design, Beauty Therapy, Art, Fashion Design, Building Design, Travel and Tourism, Furniture Making, Visual Arts.</i></p>
<p>S</p> <p>Social</p>	<ul style="list-style-type: none"> Do you think of yourself as being friendly and trustworthy? Are you cooperative and supportive? Do you like healing and nurturing others? Do you like helping people as in teaching, counselling, nursing or giving information? Do you like working in a team environment Do you solving social problems? 	<p>A Helper. Helpers are usually people who are good listeners and have excellent communication skills. They are generally socially minded and love to help others.</p> <p>Possible careers might be: <i>Aged Care, Nursing, Child Care, Sport, Recreation and Fitness, Community Services, General Education, Youth Work, Disability Work, Education Support, Training and Assessment.</i></p>
<p>E</p> <p>Enterprising</p>	<ul style="list-style-type: none"> Are you sociable, energetic and ambitious? Are you interested in leadership, business or politics? Are you competitive, persuasive and motivating? Do you like selling ideas or things? Do you like power, status and thrive on taking risks? 	<p>A Persuader. Persuaders enjoy meeting people and speaking in public. Enterprising individuals are usually thought of as being persuasive and take an innovative approach to life.</p> <p>Possible careers might be: <i>Business Administration, Management, Computing, Fashion Design, Interior Design, Hospitality, Travel & Tourism, Hairdressing, Beauty Therapy, Retail, Building Design.</i></p>
<p>C</p> <p>Conventional</p>	<ul style="list-style-type: none"> Are you a detailed person who is organised, accurate and efficient? Do you like working with written records, numbers, systems and machines in an orderly way? Do you work well with data, numbers, processes and procedures? 	<p>An Organiser. Organisers love organising things. They have good implementation and follow up skills and are structured and methodical in their approach to life.</p> <p>Possible careers might be: <i>Business Admin, Computing, Accounting, Accounts Admin, Carpentry, Electrical, Mining and Resources, Laboratory Technician.</i></p>

<p><u>Agriculture, Food and Natural Resources</u></p> 	<p><u>Architecture and Construction</u></p> 
<p><u>Arts, Audio/Video Technology and Communications</u></p> 	<p><u>Business, Management and Administration</u></p> 
<p><u>Education and Training</u></p> 	<p><u>Finance</u></p> 
<p><u>Government and Public Administration</u></p> 	<p><u>Health Science</u></p> 
<p><u>Hospitality and Tourism</u></p> 	<p><u>Human Services</u></p> 
<p><u>Information Technology</u></p> 	<p><u>Law, Public Safety, Corrections and Security</u></p> 
<p><u>Manufacturing</u></p> 	<p><u>Marketing, Sales and Service</u></p> 
<p><u>Science, Technology, Engineering and Mathematics</u></p> 	<p><u>Transportation, Distribution, and Logistics</u></p> 

Element 2: Identify Educational Goals



- Students use career interests to guide their educational goals for graduation and postsecondary



- 4-Yr Colleges
- 2-Yr Colleges
- Technical Colleges
- Military Training
- Apprenticeships
- On-the-Job Training



Options for Pathways



2-Year Community
College

One-Year or Two Year
Technical College

Industry Standard
Certificate Program

Four-Year College or
University

Apprenticeship
Internship, or
On the Job Training

Military Training



Postsecondary Options



Options

- 2-year College <http://www.sbctc.edu/our-colleges/default.aspx>
- 4-year college <http://www.wsac.wa.gov/college-admissions>

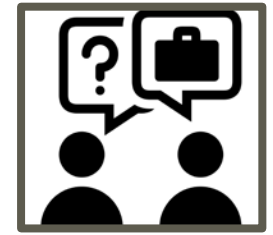
More Options

- Military training <https://www.usmilitary.com/4509/career-military-training-options/>
- Apprenticeship <http://www.ini.wa.gov/TradesLicensing/Apprenticeship/Programs/default.asp>
- Internships <http://www.internships.com/washington>
- On the job training <http://www.ini.wa.gov/ClaimsIns/Voc/Ojt/Default.asp> and <https://esd.wa.gov/>
- Program of Study and Industry Standard Certificate Programs <http://www.k12.wa.us/CareerTechEd/clusters/>
- National Career Readiness Certificate (NCRC) <http://www.act.org/content/act/en/products-and-services/workforce-solutions/act-national-career-readiness-certificate.html>
- Student in Special Education <https://www.seattleu.edu/ccts/> “Center for Change in Transition Programs”
- Students in ELL <http://www.k12.wa.us/MigrantBilingual/BilingualProgram.aspx>



SBCTC College and Career Search

(check-out-a-college.com)



<https://www.sbctc.edu/our-colleges/search-college-programs/default.aspx>

Program types key:

- **Career and Job Training** - Certificates and degrees to prepare graduates to enter workforce with relevant skills.
- **Transfer** - Associate degrees for transfer toward a bachelor's degree at a four year college or university.
- ★ **Applied Baccalaureate** - Bachelor's degrees offered by a community or technical college program

Search Filters

[Clear all filters](#) for new search.

Choose one or more filters to narrow your results.

- + Location (region)
- + Colleges
- + Areas Of Interest (majors)

College Programs

Click on a college below to see a list of degrees and certificate programs of interest. Use the **Search Filters** tool to browse by areas of interest.

- + Bates Technical College
- + Bellevue College
- + Bellingham Technical College
- + Big Bend Community College



Washington State
Community and Technical Colleges

Better Jobs, Brighter Futures, a Stronger Washington

WA Student Achievement Council

<http://www.wsac.wa.gov/college-admissions>

- College Admissions - 4-yr and 2-yr
- CADR – College Admission Distribution Requirements for 4-yr universities
- College Readiness – Smarter Balanced Assessment Scores for Placement
- Financial Aid
 - College Bound Scholarship
 - State Need Grants
 - Passport to College for Foster Students



- 12th Year Campaign



<http://www.wsac.wa.gov/12th-year-campaign>

- Ready, Set, Grad



<http://readyssetgrad.org/>

- GEAR UP CCR Resources



<http://www.gearup.wa.gov/resources>

- Scholarship Search – Washboard



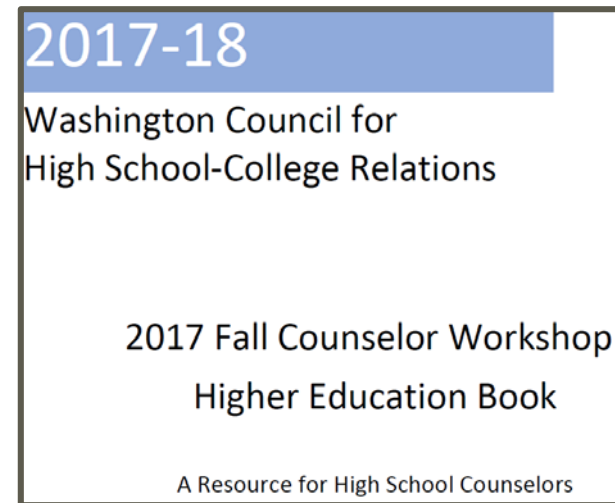
<http://www.thewashboard.org/login.aspx>

WA Council for High School/College Relations

<http://www.washingtoncouncil.org>

College and Career Readiness Resources and Workshops

- “Higher Education Book” Admissions, Tuition, Programs, and More
 - WA Baccalaureates
 - WA Community and Technical College
- Fall Counselor Workshops
- Dual Credit Workshop
- College Planning Days for 10th and 11th graders
- 8th Grade College Exploration Days



The Washington Council

CTE Programs of Study

<http://www.k12.wa.us/careertech/ProgramsofStudy>

Programs of Study

Planning for a career-ready education

Programs of Study are detailed guides for students, mapping out specific course options for a chosen career path from high school through postsecondary education, transition into postsecondary education from high school CTE. They exemplify the importance of career planning, beginning in the freshman year in high school, and

Below are 78 model Programs of Study (POS) for the 16 Career Clusters based on CareerClusters.org. Each model has been updated with the following information:

- Certificate and 4-year information as posted on Workforce Explorer (Note: Individual post-secondary institutions may change this data)
- Active apprenticeships in Washington (as of 6/1/2010)
- Current 2-year degrees at Washington State Community and Technical Colleges based on the SBCTC Matrix (published January 11, 2010)
- High demand jobs as published on Workforce Explorer (as of 6/1/2010)

[Agriculture, Food & Natural Resources](#) (ZIP)

[Architecture & Construction](#) (ZIP)

[Arts, A/V Technology & Communications](#) (ZIP)

[Business, Management & Administration](#) (ZIP)

[Education and Training](#) (ZIP)

[Finance](#) (ZIP)

[Government & Public Administration](#) (ZIP)

[Health Science](#) (ZIP)

[Hospitality & Tourism](#) (ZIP)

[Human Services](#) (ZIP)

[Information Technology](#) (ZIP)

[Law, Public Safety, Corrections & Security](#) (ZIP)

[Manufacturing](#) (ZIP)

[Marketing](#) (ZIP)

[Science, Technology, Engineering & Mathematics](#) (ZIP)

[Transportation, Distribution & Logistics](#) (ZIP)



Apprenticeship Programs

Apprenticeship

<http://www.lni.wa.gov/tradeslicensing/apprenticeship/>

Program of Study and Apprenticeships

<http://www.k12.wa.us/careertech/pubdocs/ProgramsofStudyandApprenticeshipAlignmentGrid.pdf>



OFFICE OF SUPERINTENDENT OF PUBLIC INSTRUCTION

3/27/2018



More Postsecondary Options

Internships

<http://www.internships.com/paid/washington>

FIND 2017 **PAID** INTERNSHIPS IN **WASHINGTON STATE**



Military Training and Resources

<http://todaysmilitary.com/training>

TODAY'S MILITARY

Joining

Research & Planning

Training

Basic & Advanced

Working

Careers & Pay

Living

Benefits & Family

Inside Look

Videos & Stories

Guidance

Parents & Educators



OFFICE OF SUPERINTENDENT OF PUBLIC INSTRUCTION

3/27/2018

26

Element 3: Four-Year Course Plan

(Some students may have a 5th, 6th, or 7th Year Plan to Graduate)



Subject Area	Grade 9	Grade 10	Grade 11	Grade 12	Postsecondary Aspiration
English					
Mathematics					
Science					
Social Studies					
Health and Fitness (PE)					
Arts or PPR (Personalized Pathway)					
World Language or PPR (Personalized Pathway)					
Career & Technical (CTE)					
Electives					
Total					

Personalized Pathway Requirement – Class of 2019 +



A sequence of courses, chosen by you, that prepare students to meet graduation requirements with a specific post-high plan that aligns with career and educational goals.

- Created in collaboration with student, parent/guardian, school counselor/advisor/teacher



- 3 course choices – Arts 2 and/or 2 World Language or other courses declared in this plan, along with 4 electives and 17 core courses complete the 24 credit career and college ready diploma**

“For my Personalized Pathway courses, based on my career interests and educational goals, I plan to take these courses to meet my graduation requirements:

For 2 Arts or 1 Arts (one Arts is required to graduate) I plan to take _____.

For 2 World Language or No World Language. I plan to take these 2 courses _____ and _____.”





THE WASHINGTON STATE BOARD OF EDUCATION

[http://www.sbe.wa.gov/documents/GradRequirements/Grad%20Requirements%202017%20to%202021%20Aug%2017%20\(002\).pdf](http://www.sbe.wa.gov/documents/GradRequirements/Grad%20Requirements%202017%20to%202021%20Aug%2017%20(002).pdf)

Credit and Assessment Graduation Requirements

Bold red denotes a change in the credit requirements for the Class of 2019 compared to previous years.

Class of:		2017	2018	2019	2020	2021
Entering 9 th grade after July 1 of: See note (1).		2013	2014	2015 See note (2).	2016	2017
English		4	4	4	4	4
Math		3	3	3	3	3
		Algebra 1 or integrated math 1, geometry or integrated math 2, Algebra 2 or integrated math 3 or another third credit of math. See note (3).		Algebra 1 or integrated math 1, geometry or integrated math 2, and a third credit of math aligned with the student's interest and High School and Beyond Plan. See note (3).		
Science		2	2	3	3	3
		One of the two credits must be a lab science.		Two of the three credits must be a lab science.		
Social Studies		3	3	3	3	3
		One credit of US History, one credit of Contemporary World History, Geography and Problems, 0.5 credits of Civics, 0.5 credits of social studies electives, and Washington State History and Government as a non-credit requirement. See note (4).				
Arts		1	1	2	2	2
		One of the two credits may be a PPR. See note (5).				
Health and Fitness		2	2	2	2	2
		1.5 Fitness and .5 Health. Students may be excused from Fitness under RCW 28A.230.050 . See note (6).				
Career and Technical Education (CTE)		1	1	1	1	1
		CTE program or occupational education. See note (7).				
World Languages		(Not a requirement for these classes.)		2	2	2
		One or two credits may be a PPR. See note (5).				
Electives		4	4	4	4	4
Total Required Credits		20	20	24	24	24
Non-credit Requirements		High School and Beyond Plan and Washington State History and Government (subject to the provisions of RCW 28A.230.170 , RCW 28A.230.090 , and WAC 392-410-120).				
Assessments Required for Graduation (See OSPI state testing webpage)	English Language Arts	Smarter Balanced Exam. See note (8).				
	Math	Year 1 End-of-Course Exam or Year 2 End-of Course Exam or Smarter Balanced Exam. See note (8).		Smarter Balanced Exam. See note (8).		
	Science	(The science assessment is not required for graduation.)				Comprehensive science exam. See note (9).

Element 4: Resume or Activity Log



- ❑ A resume or activity log by end of 12th grade
- ❑ Documentation of CTE Certificates



- What is the difference between resume and activity log?
- Includes:



- ✓ Contact information – Use professional email
- ✓ Objective – Short statement
- ✓ Skills and strengths – Action words
- ✓ Experiences – Extra curricular activities, volunteer or part-time jobs



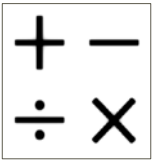
Resume or Activity Log Contains...



- **Contact Information:** (professional email and phone number)
- **Objective:** (a personal statement for a college or scholarship application, leadership roles, goals, or special circumstances)
- **Skills and Strengths:** (short points using action words; list any CTE courses, certifications, college credit, and pre-apprenticeship certifications.)
- **Experience:** (positions/titles, main responsibilities, work or volunteer experience, and list of accomplishments in school or community based groups)
- **Activities/Athletics, Leadership Roles, Talents, Awards, Community Service:** (positions and accomplishments in the groups joined)



Elements 5: Additional Requirements



- State Assessments** and other assessments
- Transcript and Progress Review**
- 8th Grade Students who have not earned Level 3 on MS math state assessment** must take math in both 9th & 10th grades
- 8th Grade Students who have not earned Level 3 on ELA and math state assessment** must have a **Student Learning Plan** before entering 9th grade
- Third year of math** and content of science must be chosen in agreement with **student's parents /guardian and Parent/Guardian involvement** is required



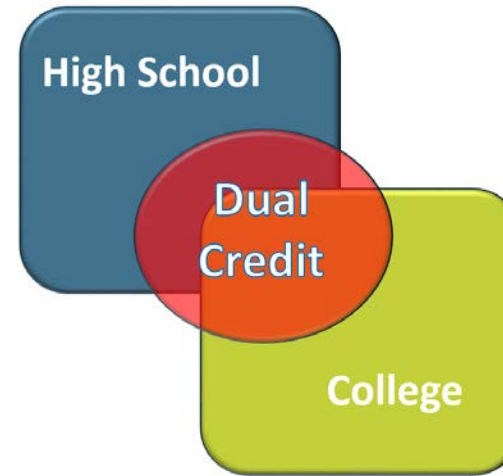
List of Assessments and Related Information

REQUIRED	
State Assessment	My Scores/Results (CAA/CIA)
<input type="checkbox"/> Smarter Balanced Assessment	
<input type="checkbox"/> English Language Arts (ELA)	
<input type="checkbox"/> Math	
<input type="checkbox"/> Science	
<input type="checkbox"/> End of Course Exams or Local Exams	
<input type="checkbox"/> End of Course Exams or Local Exams	
<input type="checkbox"/> Alternatives – Specify:	
<input type="checkbox"/> Alternatives – Specify:	
OPTIONAL	
Career and College Readiness Assessments	My Combined Scores
<input type="checkbox"/> PSAT Reading _____ Math _____	
<input type="checkbox"/> SAT Reading _____ Math _____ Writing _____	
<input type="checkbox"/> ACT Reading _____ Math _____ Writing _____ <u>Soc Sci</u> _____	
<input type="checkbox"/> ASVAB	
<input type="checkbox"/> College Placement Tests	
<input type="checkbox"/> Other _____	
<input type="checkbox"/> Other _____	
Bridge to College Courses	My Grade
<input type="checkbox"/> English	
<input type="checkbox"/> Math	



Include Dual Credit

List Score, Credit, and/or Grade



Documentation of Rigor and College Credit

- AP, IB, Cambridge
 - Use Dual Credit Look Up Tool
- Running Start, College in High School
- CTE Dual Credit (Tech Prep)
 - Starting a college transcript

Dual Credit Course Exams for College Credit

- Advanced Placement (AP)
- International Baccalaureate (IB)
- Cambridge International (CI)

Dual Credit Courses for College Credit

- Running Start
- College in the High School
- CTE Dual Credit [formerly called Tech Prep]
- OTHER**



Options for Earning Dual Credit

<http://www.k12.wa.us/DualCredit/Resources.aspx>

OSPI Resources

Passing a College Course

College in the High School

Running Start

Can include on-line courses

Passing a Standard Exam

Advanced Placement

International Baccalaureate

Cambridge International

Passing an Articulated Class

CTE Dual Credit
(formerly Tech Prep)

(high school class that has an “articulation agreement” with a college course; college credit conferred if student enrolls in college program & earned A or B)

Interventions and Academic Support for HSBP

<http://lawfilesexternal.wa.gov/biennium/2017-18/Pdf/Bill%20Reports/House/2224-S.E%20HBR%20FBR%2017%20E3.pdf>



Requires students who have not earned CAA by 11th grade to have access to **interventions and academic support, courses** or both to enable students to meet minimum HS graduation standards as a part of their High School & Beyond Plan

MY INTERVENTIONS:

Chosen Strategy:	Timeline:	Result:

MY ACADEMIC SUPPORTS:

Chosen Strategy:	Timeline:	Result:



State Resources provide tools and links



High School & Beyond Plan

Who Am I? What can I Become? How will I Become That?

Partnerships provide online tools



WSIPC Digital High School & Beyond Planner - 4-yr course planner in your student information system
<http://www.wsipc.org/service/products/data-technologies>

Career Bridge and Where Are You Going? - Career Interest Inventory and postsecondary search
<http://www.careerbridge.wa.gov>

Check Out A College - State Board for Community and Technical Colleges Career and job training programs
<https://www.sbctc.edu/our-colleges/search-college-programs>

College Admissions - WA Student Achievement Council Resources about colleges and financial aid
<http://www.wsac.wa.gov/college-admissions>



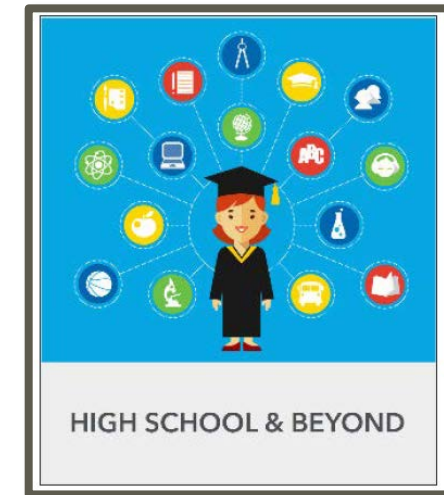
Digital High School & Beyond Planner

*Software is provided to all districts in the state at no additional cost.
If not Skyward, there is a low cost connection fee.*

- Updated with all new requirements with pulldown menus
- Translated into 200 languages
- Simple and efficient with ability to enter lots of information
- Pre-populated 4-year course plan and state assessments
- Ability to upload documents
- Information is dynamic and updated daily
- Follows students who transfer to other high schools
- Counselor tracking feature
- Parents/Guardians have access and can check off/sign

See district information director or ESD tech

<http://www.wsipc.org/service/products/data-technologies>



Success

Provides

career and college readiness for all students

Career Guidance WA in Schools

Accessed by **89%** of school districts in WA

263 of 295 school districts
1,970 elementary, middle and high schools

Also accessed by private schools, tribal schools, other states and countries



Office of Superintendent of Public Instruction
Guidance and Counseling

Key Required Elements

High School & Beyond Plan Elements

- ▶ Begins in 7th or 8th Grade
- ▶ Career Interest Inventory
- ▶ Educational Goals
- ▶ 4-Year Course Plan that includes Personalized Pathway
- ▶ Resume or Activity Log
- ▶ Interventions and Academic Supports

Personalized Pathway

- ▶ Individual for each student
- ▶ Connects with 4-Year Course Plan
- ▶ Connects with career pathway or college major
- ▶ Identifies steps, timeline and who will help

The Plan Requires

- ✓ Starting in Middle School
- ✓ Using Career Interest to make Educational Goals
- ✓ Revisiting Each Year
- ✓ Progress Review
- ✓ Involving Parents

Postsecondary Pathways

- 4-Year College
- 2-Year College
- Technical College
- Apprenticeship
- Industry Standard Certificate
- Military Training

Partnerships provide online tools

WSIPC Digital High School & Beyond Planner - 4-yr course planner in your student information system
<http://www.wsipc.org/service/products/data-technologies>

Career Bridge and Where Are You Going? - Career Interest Inventory and postsecondary search
<http://www.careerbridge.wa.gov>

Check Out A College - State Board for Community and Technical Colleges Career and job training programs
<https://www.sbctc.edu/our-colleges/search-college-programs>

College Admissions - WA Student Achievement Council Resources about colleges and financial aid
<http://www.wsac.wa.gov/college-admissions>

August 2017

www.k12.wa.us/SecondaryEducation/CareerCollegeReadiness



Career Guidance Washington

<http://www.k12.wa.us/SecondaryEducation/CareerCollegeReadiness/default.aspx>



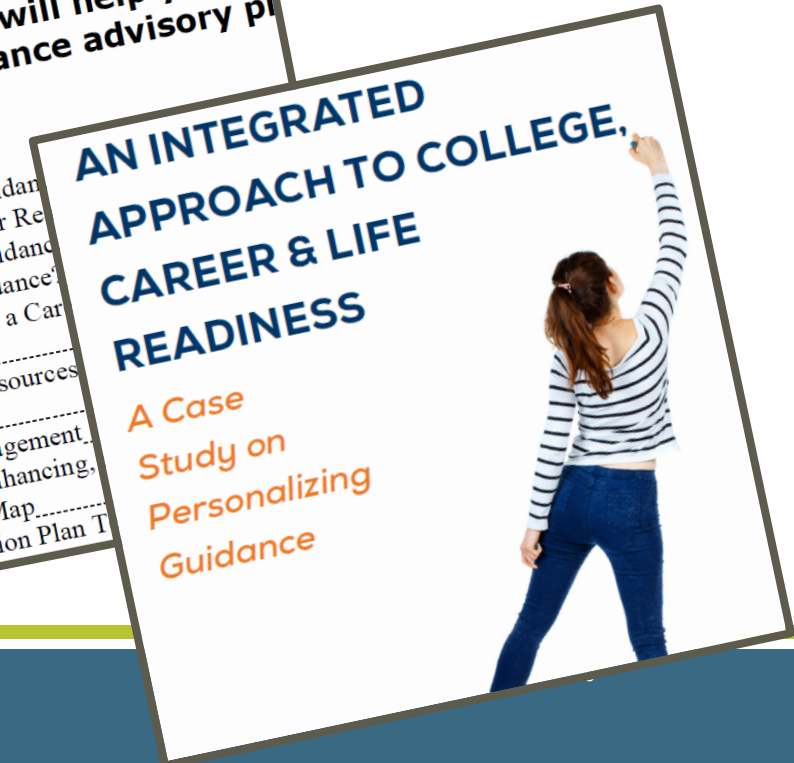
- 30 Lessons per Grade
- Grades 6-12
- HSBP Template
- Personalized Pathway

GRADE 9		GRADE 12	
#	Lesson Title	#	Lesson Title
1	Where Am I Going?	1	Where Am I Going in 12th Grade?
2	Study Like You Mean It	2	What Does it Take?
3	Becoming a Worker	3	Stress, Drama and Your Senior Year
4	School and Career Connections	4	The FAFSA Process: It's Not Just for College
5	Developing a Career Plan	5	College and Career Readiness
6	Map Your Future	6	Completing a College Application
		7	The FAFSA Process: Preparing for the Interview
		8	Postsecondary Admission Requirements
		9	High School & Beyond Plan

This handbook guide will help you be a career guidance advisory panel member

Topic

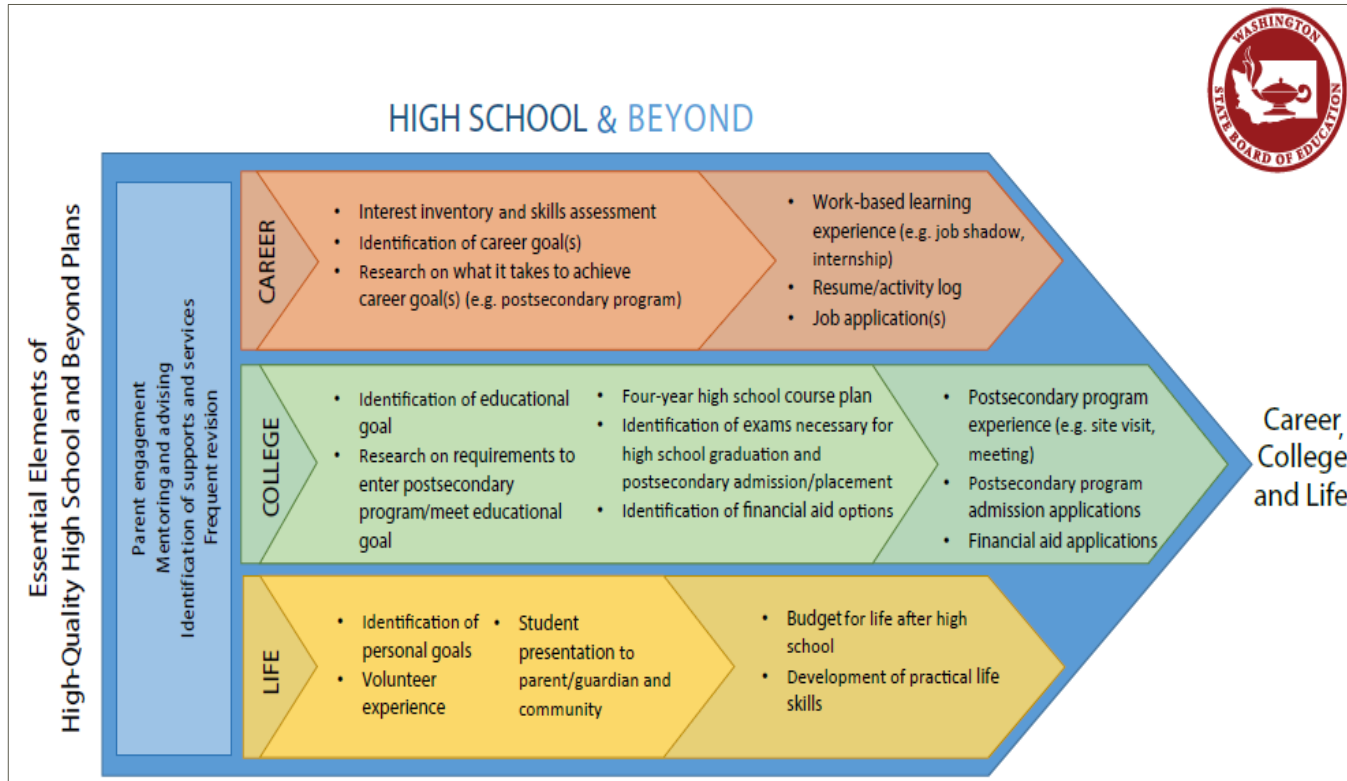
- What is Career Guidance?
- College and Career Readiness
- Online Career Guidance
- Why Career Guidance?
- Key Elements of a Career Plan
- Evaluation
- Support and Resources
- Connections
- Program Management
- Designing, Enhancing, and Implementing a Career Plan
- Curriculum Map
- Implementation Plan



OFFICE OF SUPERINTENDENT OF PUBLIC INSTRUCTION

3/27/2018

More Resources for a High Quality HSBP



The State Board of Education documents for High School & Beyond Plan

- HSBP FAQ
<http://www.sbe.wa.gov/faq/highschoolbeyondplan.php>
- High Quality HSBP
<http://www.sbe.wa.gov/HSBeyondPlan.php>
- Preparing Students for the Next Step: Secondary to Postsecondary Student

Transitions
<http://www.sbe.wa.gov/studenttransitions.php>



The Washington State Board of Education

Connection with SBCTC - Guided Pathways

- Clarify paths to student end goals (metamajors)
- Help student choose and enter a pathway (onboarding)
- Help students stay on a path (advising and monitoring)
- Ensure that students are learning (learning outcomes)



<https://www.sbctc.edu/colleges-staff/programs-services/student-success-center/guided-pathways.aspx>

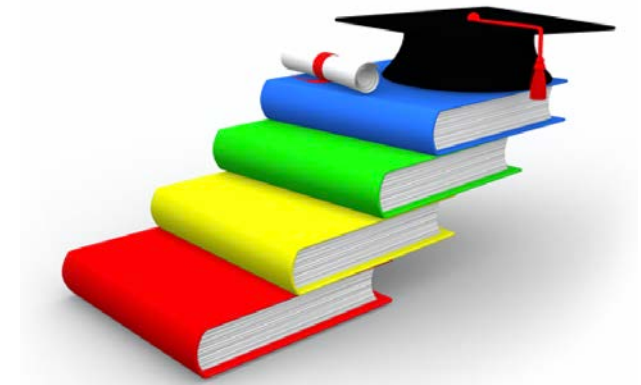
WASHINGTON'S COMMUNITY AND TECHNICAL COLLEGES

**GUIDED PATHWAYS
TO STUDENT SUCCESS**

Does your Guidance Program account for 24-Credits?

AWSP online video professional development <http://www.awsp.org/Resources/24-credits/1.aspx>

- Reaches 100% of students
- Guidance Curriculum (Pro-Active and Preventative)
- Involves ALL Students, Parents, Teachers, Career Counselors, School Counselors and
- Community Partners
- Developmental and Sequential
- Unique and Responsive Services
- Focuses Upon Needs and Goals
- Helps Facilitate School Improvement for Student Learning



OFFICE OF SUPERINTENDENT OF PUBLIC INSTRUCTION

3/27/2018

43



Changing Times



Then....



Now.....



- Product- Based
- Some or select students (CTE, IEP, ELL)
- 4-Year Course Plan on paper
- Application for CTE courses or accelerated learning
- Career development in some elective courses only
- Students are on their own for decisions
- HS Graduation is End Point
- **“It’s the Counselor or Career Center’s job”**

- ✓ Process-based using evidence-based practices
- ✓ For ALL students driven by equity analytics
- ✓ “Active” High School & Beyond Plan in personalized planning
- ✓ Open access to CTE or accelerated classes and dual credit options
- ✓ Career development infused throughout all classes
- ✓ HS Graduation is a check point/stepping stone
- ✓ **Career and college planning is a systemic, whole school responsibility**



Key Elements of Teaching College Knowledge

WCAN College Knowledge

<https://www.wcan.org/college-knowledge-overview>

OSPI College Readiness Initiative Results

<http://www.k12.wa.us/SecondaryEducation/CareerCollegeReadiness/pubdocs/IntegratedApproachtoCollegeCareerandLifeReadiness.pdf>



OFFICE OF SUPERINTENDENT OF PUBLIC INSTRUCTION

3/27/2018

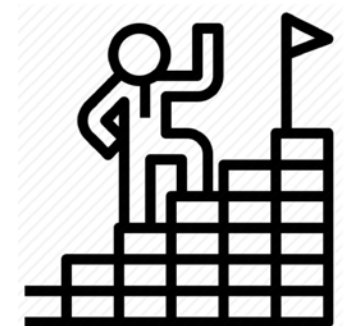


Personalized Guidance



Is a student-driven, ongoing process that actively engages students to:

- ✓ Understand their own interests, strengths, values, learning styles
- ✓ Create a vision of their future,
- ✓ Develop individual goals, and
- ✓ Prepare a personal plan for achieving their vision and goals.



Resources and Assistance

System and School Improvement

Office of System and School Improvement (OSS) is committed to closing the opportunity gap by working collaboratively with educational partners, researchers, districts and community leaders to create a coordinated, regionalized, and responsive support and improvement model for Washington schools. OSS provides leadership, technical assistance and resources to schools and districts to support their efforts to prepare every student for post-secondary aspirations, career, and life.



Study

Data, School Identification and Progress



Support

K-12 Tiered Supports



Serve

School Improvement



Get Personalized Support From Our Team!

Find out what is happening...



Graduation and Beyond



Attendance



9th Graders on Track



Dual Credit

What's New?

[Upcoming Professional Development](#)

[Frequently Asked Questions](#)

Keeping up...



WA Comprehensive School Counseling Essentials

- Academic Achievement: Evidence-Based School Counseling
- Career and College Readiness: Personalized Plan for All Students
- Social Emotional Support: Student Support Resources

Every student ready for career, college and life

OSPI K-12 Education Support and School Improvement: School Counseling

<http://www.k12.wa.us/SecondaryEducation/default.aspx> and <http://www.k12.wa.us/StudentSupport/>

OSPI “News and More for School Counselors”

Listserv

Newsletters

<https://public.govdelivery.com/accounts/WAOSPI/subscriber/new>



3/27/2018