

Data at a Glance June 5th 2022 - June 11 2022 (Week 23)

	Current Week (23)	Previous Week (22)
Percentage of emergency department visits for ILI¹	1.3%	1.4%
Percentage positive influenza tests²	2.6%	4.6%
Portland tri-county influenza-associated hospitalizations³	6	9
Reported influenza outbreaks	0	0
Influenza-associated pediatric mortality	0	0

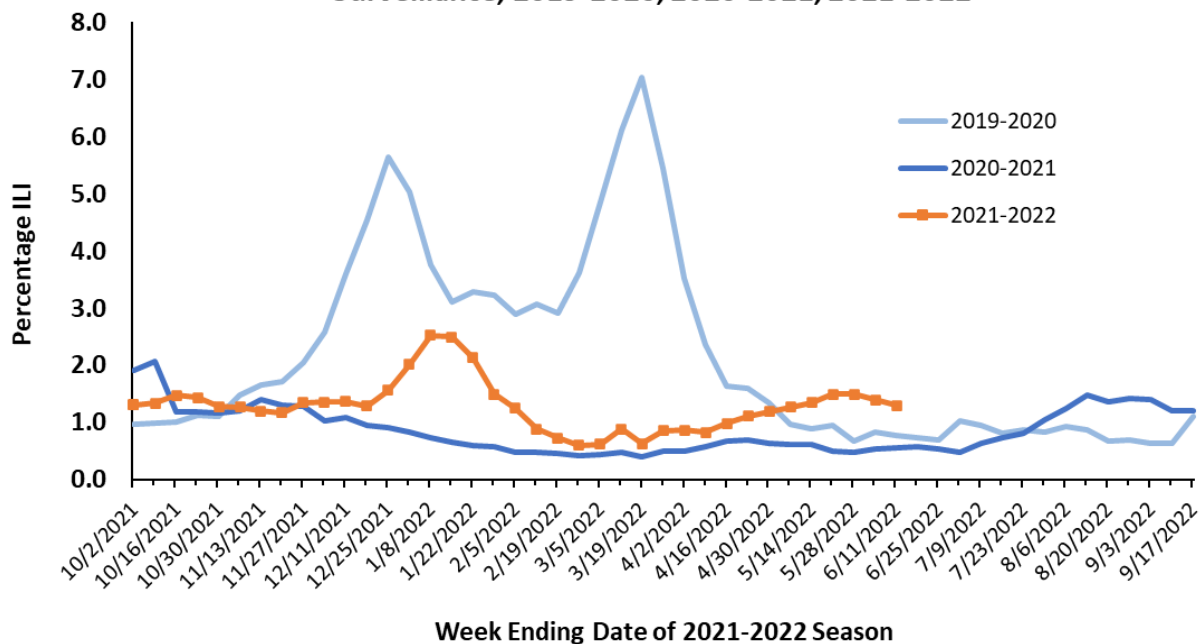
¹Based on Oregon ESSENCE Syndromic Surveillance. Data represent statewide aggregate percent.

²Percent positivity based on data from Oregon reporters to the National Respiratory and Enteric Virus Surveillance System (NREVSS)

³Based on hospitalization surveillance in Clackamas, Multnomah, and Washington counties only.

⁴Percent positivity based on data from Oregon's RSV Laboratory Surveillance System.

Figure 1. Percentage of ED Visits for ILI, Oregon ESSENCE Syndromic Surveillance, 2019-2020, 2020-2021, 2021-2022



Oregon ESSENCE Syndromic Surveillance: Oregon Public Health tracks hospital emergency department (ED) visits throughout the state using the Oregon ESSENCE syndromic surveillance system. ESSENCE categorizes chief complaints into syndrome categories, which include influenza-like illness (ILI). Figure 1, above, displays percentages for all of Oregon during this influenza season compared with the previous two influenza seasons. The percent of ED visits for ILI in all of Oregon was 1.3% during week 23, 2022.

Laboratory Surveillance: The National Respiratory and Enteric Virus Surveillance System (NREVSS) is a laboratory-based system that monitors influenza and other respiratory viruses circulating the United States. More information is at CDC’s [website](#).

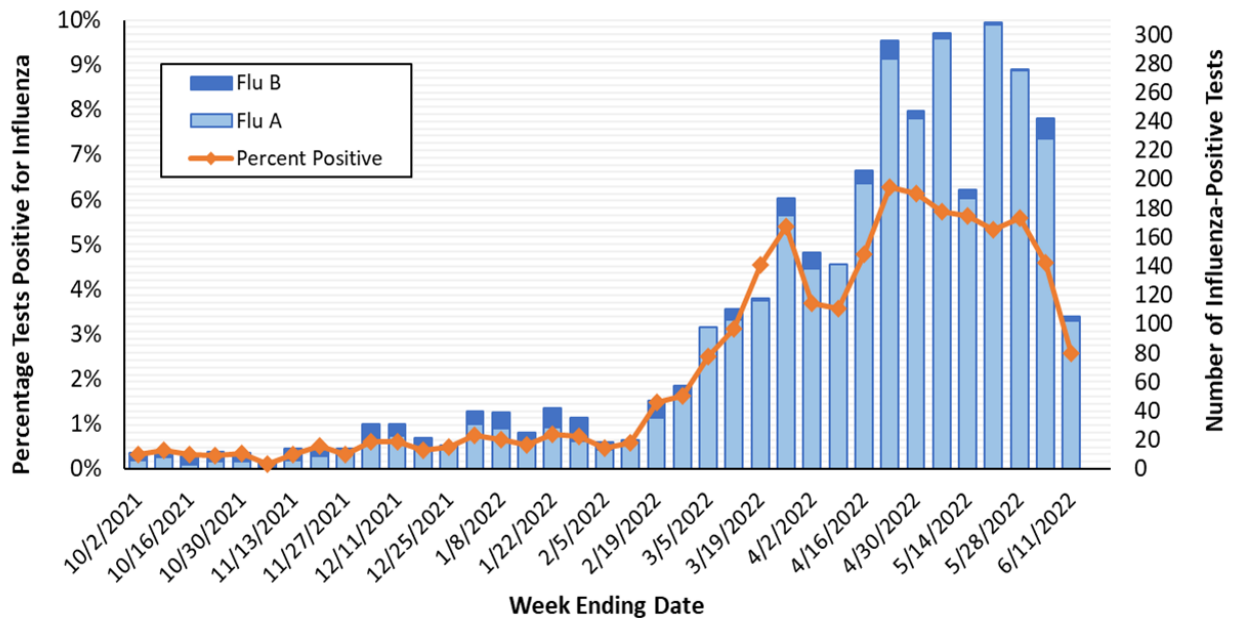
Table 1 shows the tests conducted and results by region for the current week for influenza in specimens tested at the Oregon laboratories reporting to NREVSS. Table 1 shows that 4.6% of specimens tested at Oregon labs were positive for influenza during week 23, 2022 and Figure 2 displays the number of influenza positive tests by influenza type and percent positivity.

Participation by laboratories is voluntary. Current labs participating in NREVSS in Oregon include: Legacy Emanuel Hospital and Health Center (Portland, OR), Oregon Health & Science University (Portland, OR), Providence Health (Oregon), Kaiser Permanente (Oregon), Veteran’s Administration Hospital (Portland, OR), Bay Area Hospital (Coos Bay, OR), Curry Health Network (Brookings, OR), Mercy Medical Center (Roseburg, OR), Sky Lakes Medical Center (Klamath Falls, OR), Lake Health District, (Lakeview, OR), Rogue Valley Medical Center (SW Oregon), Good Shepherd Medical Center (Hermiston, OR), Mid-Columbia Medical Center (The Dalles, OR), Central Oregon Pediatric Associates (Central Oregon), Harney District Hospital (Burns, OR), St. Charles (Bend, OR), Columbia Memorial Hospital (Astoria, OR), Salem Hospital (Salem, OR), Willamette Valley Medical Center (McMinnville, OR).

Table 1. Influenza Test Results in Oregon, NREVSS, Current Week, 2021–2022 Season

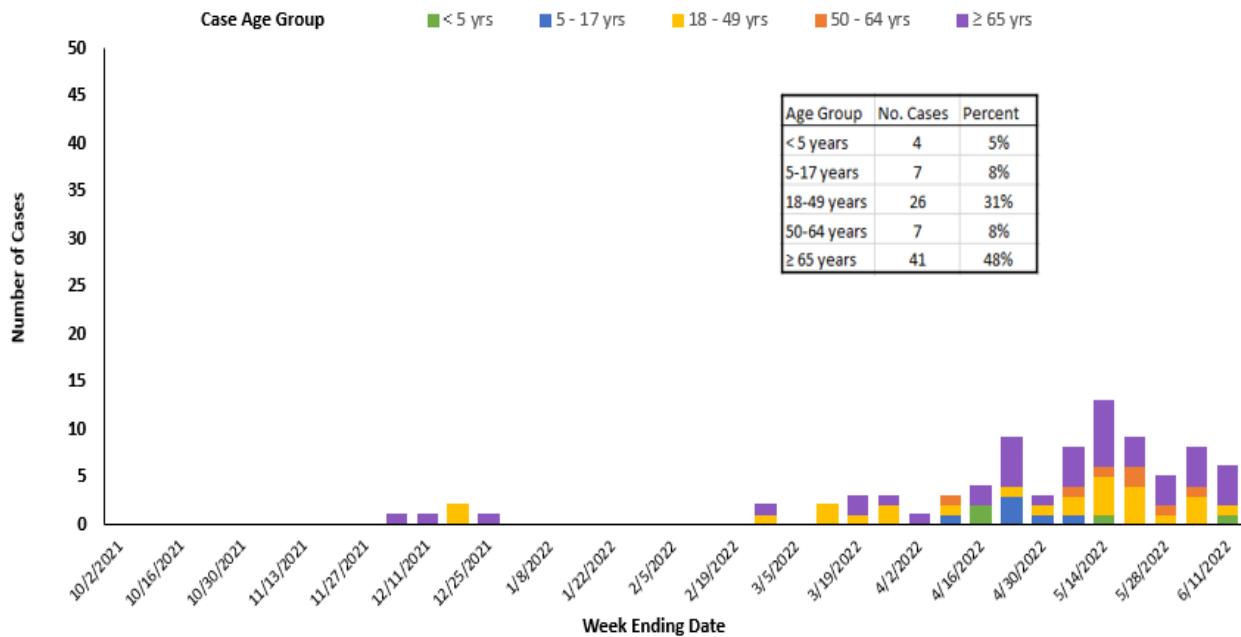
Region	Total Tests	Positive		Flu A		Flu B	
		No.	(%)	No.	(%)	No.	(%)
Portland Metro	1566	11	0.7%	11	100.0%	0	0.0%
Southern Oregon	788	15	1.9%	15	100.0%	0	0.0%
Columbia Gorge	347	23	6.6%	23	100.0%	0	0.0%
Central Oregon	917	45	4.9%	45	100.0%	0	0.0%
Willamette Valley	460	11	2.4%	8	72.7%	3	27.3%
State Total	4078	105	2.6%	102	97.1%	3	2.9%

**Figure 2. Oregon Influenza Laboratory Surveillance
Percent Positive Influenza Tests by Week, NREVSS, 2021-2022 Season**



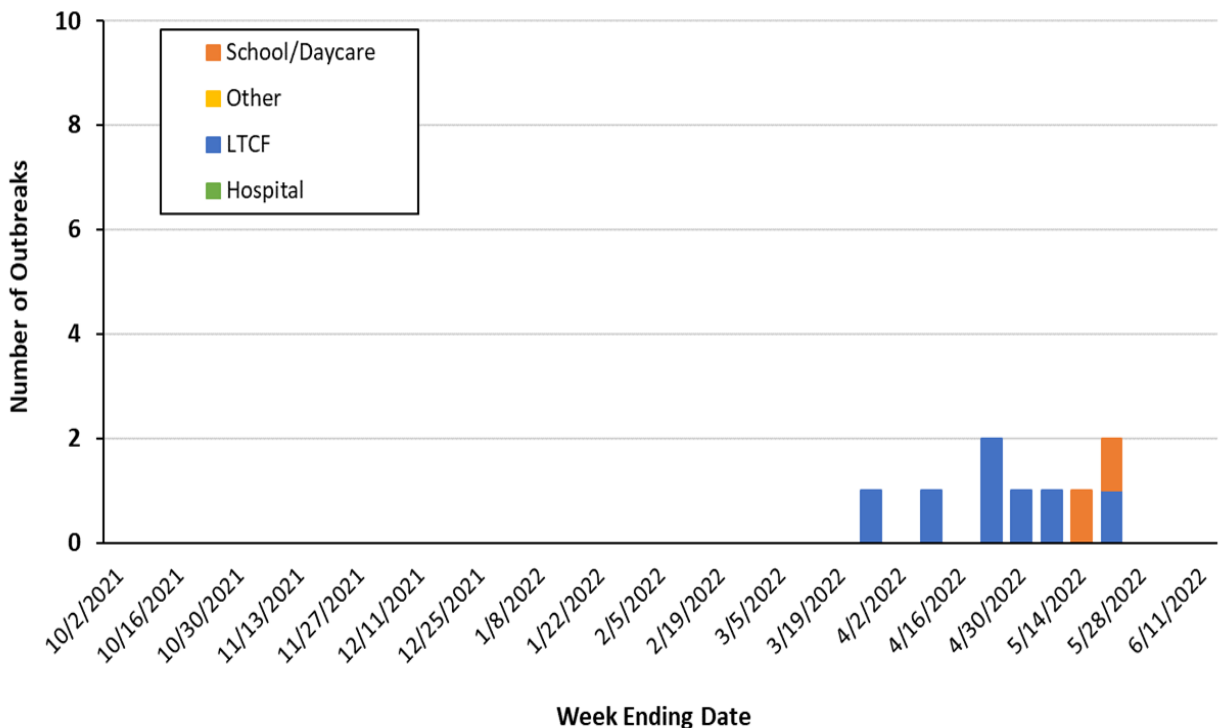
Portland Tri-County Influenza Hospitalizations: In Clackamas, Multnomah, and Washington counties there were 6 influenza-associated hospitalization reported during week 23 of 2022. There have been 85 reported hospitalizations during the 2021-2022 season.

Figure 3. Portland Metro Area Influenza-Associated Hospitalizations by Week and Age Group, 2021-2022 Season



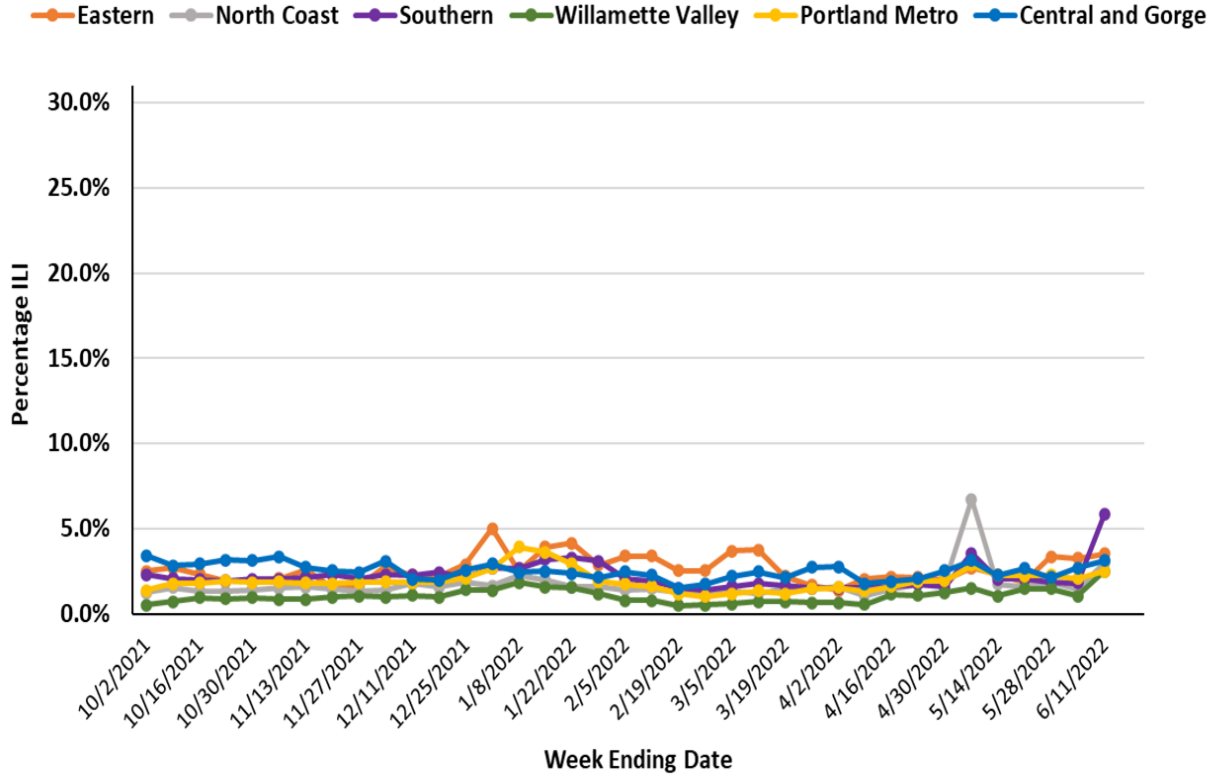
Influenza Outbreaks: There were 0 influenza outbreaks reported during week 23, 2022, there have been 9 reported outbreaks during the 2021-2022 season.

Figure 4. Number of Influenza Outbreaks in Oregon by Setting, 2021-2022 Season



Outpatient Influenza-like Illness Surveillance: Oregon’s outpatient influenza-like illness (ILI) surveillance comprises 16 voluntary reporting outpatient providers, 64 emergency departments and urgent care clinics reporting to ESSENCE, and 150 OCHIN clinics from across Oregon. The percent of outpatients seen with ILI across the state during week 23 of 2022 was 3.1%. Regionally, the percent was highest in the Eastern Oregon region (5.8%) and lowest in the Portland Metro (2.5%).

Figure 5. Percentage of Visits for ILI at Outpatient Clinics & Emergency Departments, by Oregon Region, 2021-2022



Influenza-Associated Pediatric Mortality Surveillance: Influenza-associated deaths in children 17 years of age and younger are nationally notifiable. There were no pediatric influenza deaths in Oregon reported during week 23, 2022 and none yet reported to the Oregon Health Authority in the 2021—2022 influenza season.

US Data (from [CDC FluView](#)): Seasonal influenza activity in the United States remains low, but the number of influenza virus detections reported by public health laboratories has increased in recent weeks.

Viruses

- **Clinical Labs:** The percentage of respiratory specimens testing positive for influenza at clinical laboratories is 3.4% this week.
- **Public Health Labs:** The majority of viruses detected are influenza A (H3N2)
- **Virus Characterization:** Genetic characterization data are now summarized on [CDC FluView](#)

Illness

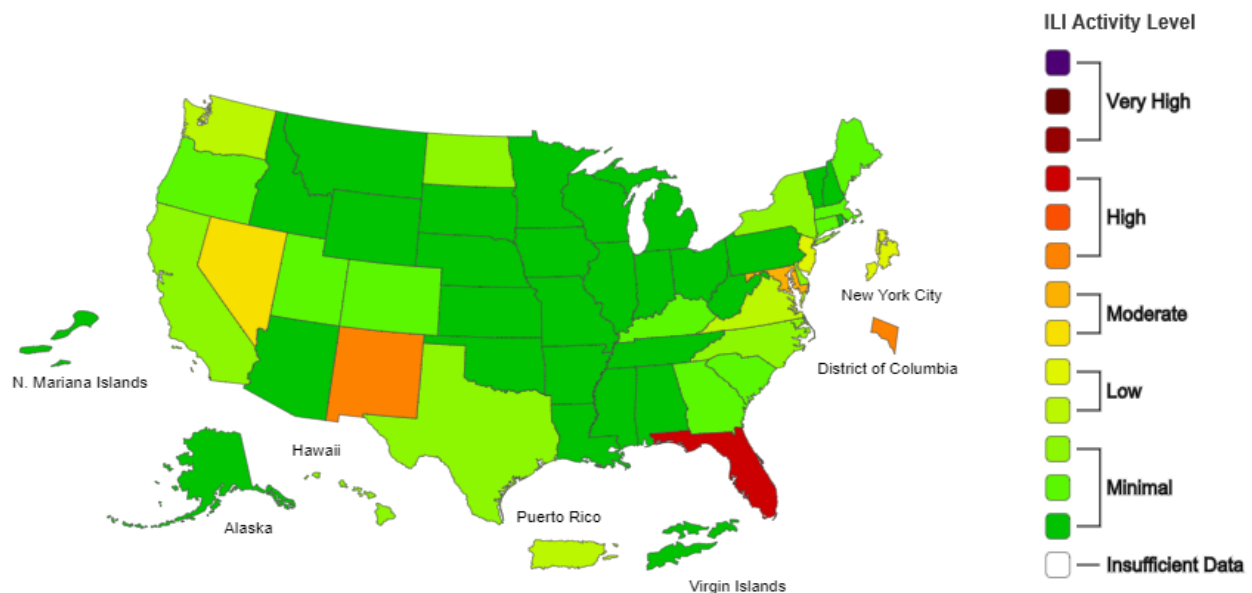
- **ILINet Outpatient Illness:** Nationwide during week 23, 2.1% of visits to a health care provider are for respiratory illness. This percentage is below the national baseline.
- **ILINet Activity Map:** This week, 3 jurisdictions experienced moderate activity and 0 jurisdictions experienced high or very high activity.
- **Long-term Care Facilities:** This week, 0.4% of facilities reported ≥ 1 influenza-positive test among residents this week.

Severe Disease

- **FluSurv-NET:** 17.1 per 100,000 cumulative hospitalization rate
- **HHS Protect Hospitalizations:** 2,089 patients admitted to hospitals with influenza this week
- **PIC Mortality:** No report this week due to system-wide coding upgrade.
- **Pediatric Deaths:** 1 influenza related deaths were reported this week, 29 influenza-associated pediatric death has occurred during the 2021-2022 season and have been reported to CDC.

Influenza-like Illness (ILI) Activity Level Indicator by Data Reported to ILINet

2021-22 Influenza Season Week 23 ending Jun 11, 2022



Map above: This map uses the proportion of outpatient visits to healthcare providers for influenza-like illness to measure the ILI activity level within a state. It does not, however, measure the extent of geographic spread of flu within a state. Therefore, outbreaks occurring in a single city could cause the state to display high activity levels.

All Flu Bites data are preliminary and may change as additional reports are received. Find the most recent Flu Bites report online at: <http://www.oregon.gov/oha/ph/DiseasesConditions/CommunicableDisease/DiseaseSurveillanceData/Influenza/Pages/surveil.aspx>