

MONOPRICE®

Graphic Drawing Tablet

4000 LPI, 200 RPS, 2048 Levels



10 x 6.25_{inch}

Windows User's Manual

10594

CONTENTS

I. General Information	1
1. Overview.....	1
2. Pen Tablet Functions.....	1
3. System Requirements	1
4. Technical Support.....	2
5. Package Contents	2
6. Installing the Driver Software.....	3
7. Hardware Installation.....	4
8. Verifying Hardware and Driver Functionality.....	5
9. Usage Tips	6
II. Configuration	7
1. The Info Tab	7
2. The Monitor Setting Tab	8
3. The Button Tab.....	9
4. The Express Keys Tab	10
4.1 The Common Tab.....	11
4.2 The Run Tab.....	12
4.3 The Internet Tab	13
4.4 The Hot Key Tab.....	14
4.5 The Mouse Tab.....	15
4.6 The Multimedia Tab	16
4.7 The Other Tab.....	17
5. The Scope Tab	18
6. The Hot Cells Tab.....	19
6.1 The Run Tab.....	20
6.2 The Internet Tab	21
6.3 The Hot Key Tab.....	22
6.4 The Multimedia Tab	23
6.5 The Other Tab.....	24
7. The Pressure Tab.....	25
III. Pen Storage and Maintenance	26
1. Storing the Digital Pen.....	26
2. Replacing the Battery in the Digital Pen	26
3. Replacing the Pen Tip	27

I. General Information

1. Overview

Thank you for purchasing this Monoprice Graphic Tablet!

A Graphic Tablet, with its accompanying wireless digital pen, is a natural and intuitive input device for drawing and image editing tasks. It is also an excellent alternative input device over a mouse when performing conventional computer tasks.

2. Pen Tablet Functions

After installing the device driver, your pen tablet can perform the following functions:

Direct Pointing: You can move the cursor to any location on the screen by hovering the digital pen tip over the tablet's surface.

Three-Button Mouse Commands: Your pen tablet provides all the functionality of a three-button mouse using the pen tip and two buttons.

Pen Scrolling: You can scroll in documents and applications by pressing the middle button on the digital pen while moving the pen over the tablet's surface.

Pressure Sensitivity: The tablet and pen feature 2048 levels of pressure sensitivity so, like a real pencil, the harder you press down the darker and thicker the lines, while minimal pressure will produce faint, thin lines.

3. System Requirements

Windows XP/Vista/Windows 7/Windows 8 (32- & 64-bit)
Available USB port
CD-ROM drive

4. Technical Support

Monoprice is pleased to provide free, live, online technical support to assist you with any questions you may have about installation, setup, troubleshooting, or product recommendations. If you ever need assistance with your new product, please come online to talk to one of our friendly and knowledgeable Tech Support Associates. Technical support is available through the online chat button on our website (www.monoprice.com) during regular business hours, 7 days a week. You can also get assistance through email by sending a message to tech@monoprice.com.

5. Package Contents

After receiving the product, please inventory the contents to ensure you have all the proper parts, as listed below. If anything is missing or damaged, please contact Monoprice Customer Service for a replacement.

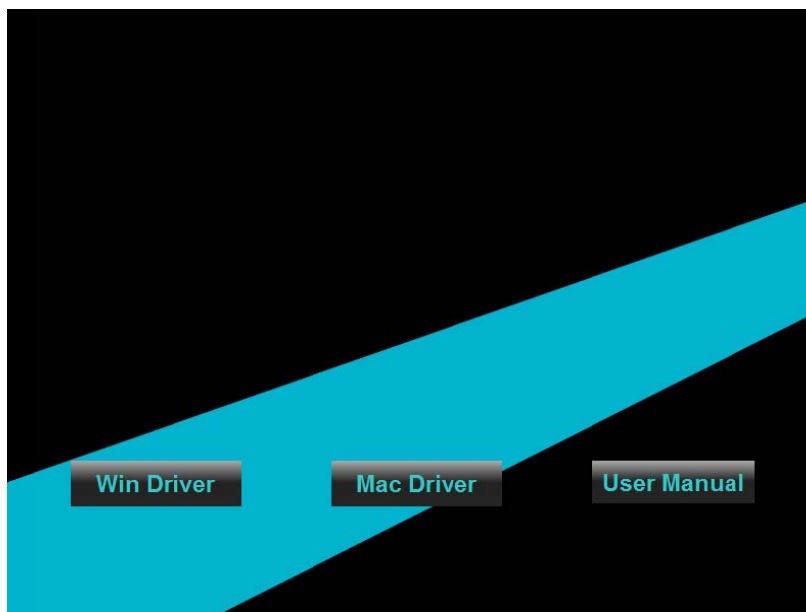
- 1x Graphic tablet
- 1x Wireless graphic tablet pen
- 1x Mini USB cable (4.9ft/1.5m)
- 1x Pen holder (with 4x replacement pen tips and 1x pen clip tip removal tool)
- 1x Drivers and software CD
- 1x User's manual
- 1x AAA battery



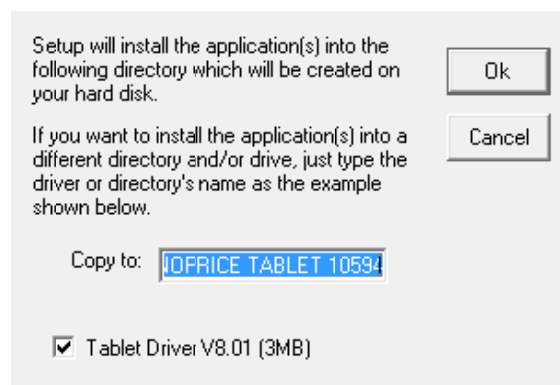
6. Installing the Driver Software

IMPORTANT! Do not plug the tablet into your PC until after you have installed the device driver.

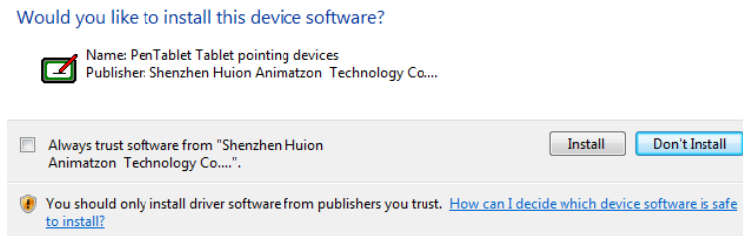
- a. Insert the Driver CD into the CD-ROM drive, and wait for the main installation screen to appear. If you have autorun disabled or for some other reason the installation program does not start, open the disc in Windows Explorer and double-click the SETUP.EXE program to begin the setup.
- b. Click the **Win Driver** button to launch the installer.



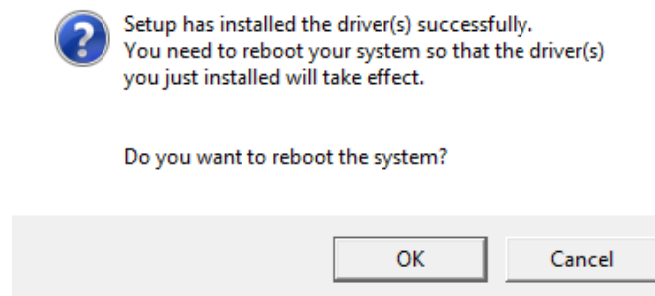
- c. The default install directory is **C:\Program Files (x86)\Monoprice Tablet 10594**. Click the **OK** button to begin the installation process.



d. If prompted by Windows Security to verify the driver source, click the **Install** button to continue the installation. Repeat this process as needed until the installation is complete.



e. When the installation is complete, you will be prompted to reboot your computer. Save any open files you may be working on and click the **OK** button to reboot your system.



7. Hardware Installation

Once the device driver has been installed and you have rebooted your PC, you can install the tablet.

- a. Plug one end of the included USB cable into the USB port on the tablet and the other into an available USB port on your PC
- b. Once connected a small tablet icon will appear in the system tray.
- c. Install the included AAA battery in the pen using the instructions found in section III below.

8. Verifying Hardware and Driver Functionality

Once the software and hardware has been installed, verify the operation and functionality of the tablet.

- a. Press the power button on top of the pen. The tablet will initiate and then the LED indicator on the left side will flash briefly.
- b. Press a button on the pen. The LED indicator will flash briefly.
- c. Hover the pen over the working surface of the tablet. The LED indicator will slowly blink and the cursor on screen will move to follow the movement of the pen.

If all three tests above pass, the pen and tablet have been properly installed and setup on your PC.

If the tests fail, please contact Monoprice Technical Support for assistance. You can contact Tech Support via email at support@monoprice.com, using "Contact Us" form at:

<http://www.monoprice.com/home/home.asp?pn=contact>

You can also use the Live Chat feature on our website, at:

<https://www.monoprice.com/home/chat.asp>

Tech Support is available for Live Chat during the following hours:

Monday through Friday:	6:00 am ~ 7:00 pm PT
Saturday and Sunday:	9:00 am ~ 6:00 pm PT

9. Usage Tips

The following guidelines will help obtain the best results in using this Graphic Tablet:

Double Tapping: A quick double tap of the pen tip is the equivalent of a double-click on a mouse.

Scrolling: The pen can be used to perform the same scrolling function available with an ordinary wheel mouse.


Using With A Mouse: In addition to the tablet and pen, you can also have a mouse connected and installed. However, only one device will function at a time. Do not connect more than two input devices at the same time as it could cause the cursor to jitter or freeze.

Power: It is recommended to power off the pen and tablet when not in use.

Storing: Do not store the pen in such a way that pressure could be applied to the tip. When not in use, store the pen in a pen holder or place it horizontally on a flat surface. When storing for a long period of time, remove the pen tip using the instructions found in section III below.

II. Configuration

The configuration dialog allows you to modify pressure sensitivity, monitor selection, customize the buttons, etc.

Locate the tablet icon  in the system tray and click it to open the Pen Tablet Settings application. Alternatively, you can run the application directly from the installation directory. Assuming you installed to the default directory, the utility is located at:

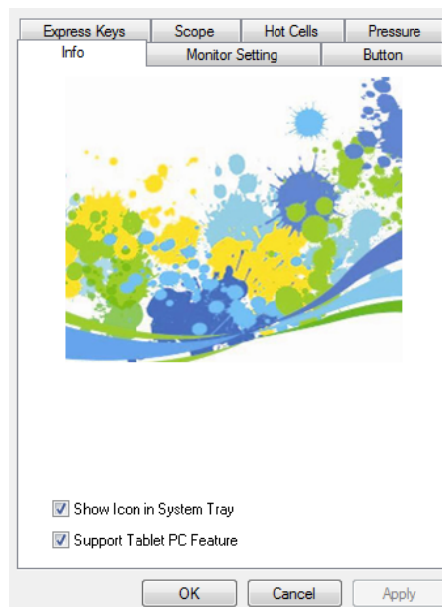
C:\Program Files (x86)\Monoprice Tablet 10594\PLaunch.exe

1. The Info Tab

The Info tab displays the driver version number. Additionally it has two options, which are selected by default:

Show Icon in System Tray - This option determines whether the tablet icon will be displayed in the system tray. It is recommended to leave this enabled to allow easy access to the tablet and pen settings dialog.

Support Tablet PC Feature - When selected the pen's pressure sensitivity feature will function properly in Microsoft Journal, OneNote (2003-2007), etc. This does not affect the pressure sensitivity function of common art software packages, such as Photoshop, Illustrator, Corel Painter, etc.



2. The Monitor Setting Tab

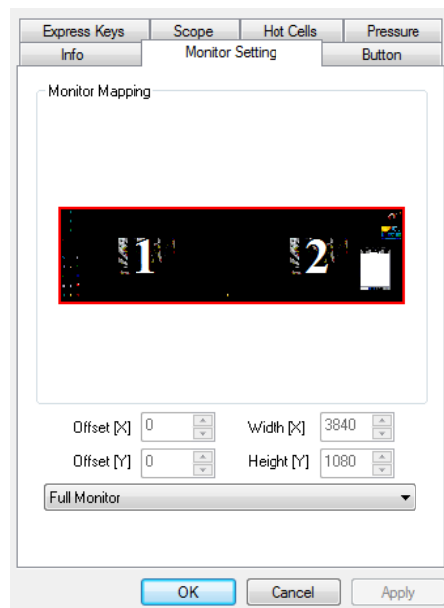
Monitor Mapping: This displays which parts of the monitor(s) are active for pen/tablet operations.

Drop-Down List Box: The drop-down list box at the bottom of the dialog allows you to select the monitor(s) to be covered by pen/tablet operations. You can select:

- Full Monitor
- Portion of Monitor
- Monitor 1
- Monitor 2

Offset X/Y: Rather than specifying the size of the pen area, this option instead sets the horizontal and vertical distances from each corner of the tablet to the edge of the active pen area. The values are in pixels and this option is only available when the **Portion of Monitor** option is selected.

Width X/Y: This option specifies the full X,Y dimensions of the active pen area. The values are in pixels and this option is only available when the **Portion of Monitor** option is selected.



3. The Button Tab

The Button tab allows you to modify the functions of the pen tip and two barrel buttons to any of the functions available on a 3-button mouse.

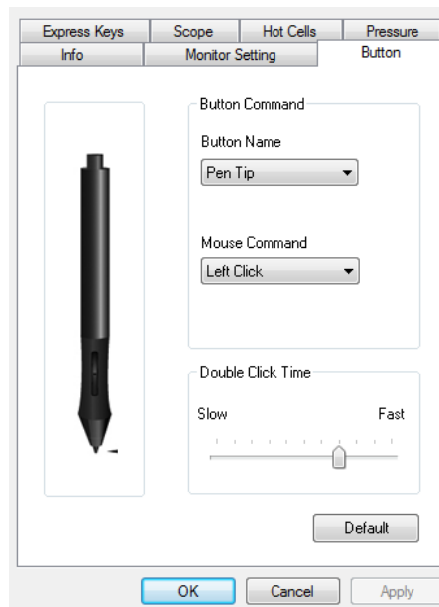
a. To change the functionality of the pen tip or one of the two barrel buttons, first use the **Button Name** drop-down list box to select the tip or button to be modified.

b. Use the **Mouse Command** drop-down list box to select the desired function. You can select:

- No Action
- Left Click
- Left Double Click
- Right Click
- Right Double Click
- Middle Click
- Middle Double Click

c. Use the **Double Click Time** slider to determine how quickly you must double-tap or double-click to get the pen to register a double-click.

d. Click the **Default** button to restore the original default settings.



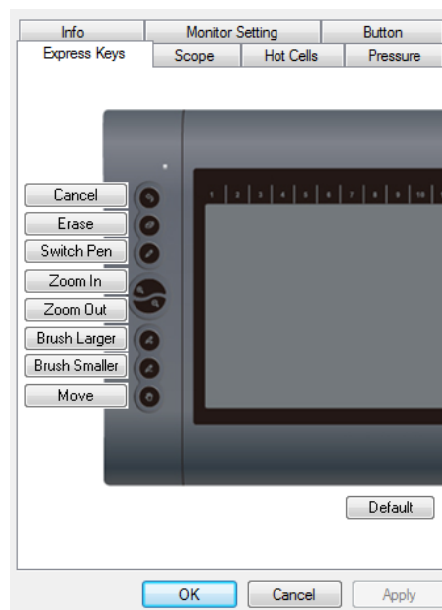
4. The Express Keys Tab

The Express Keys are the physical buttons on the left side of the tablet. The Express Keys tab allows you to determine the functions that will be assigned to each button.

The Express Keys tab presents you with eight buttons on the left side, next to each Express Key on the tablet image. There is also a **Default** button at the bottom right corner.

Clicking one of the eight buttons on the left opens the Express Key editing dialog, with seven tabs labeled:

- Common
- Run
- Internet
- Hot Key
- Mouse
- Multimedia
- Other



*The selected Express Key will perform the function that is displayed when you click the **OK** button.*

For example, by default the top Express Key is labeled **Cancel** and the default function is CTRL+Z on the **Hot Key** tab. If instead you wanted it to mute the volume on your PC, first click the **Multimedia** tab and select **Mute** from the drop-down list box. The **OK** button is now available. Click it, then click **Apply** to apply the changes. If you then click the **Cancel** button next to the top Express Key you will see that the editing dialog comes

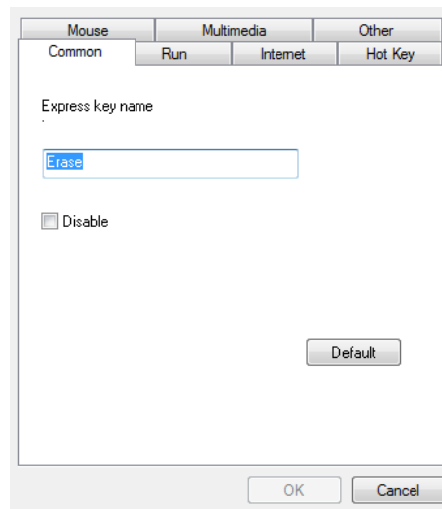
up with the Multimedia tab selected instead of the Hot Key tab, indicating that it is the currently assigned function.

4.1 The Common Tab

Express key name: Type in a name to identify the function for this key. This name will be displayed on the Express Keys tab and will also appear on screen whenever the Express Key is pressed.

Disable: Selecting this option disables the Express Key so that it does nothing when pressed.

Default: Click the **Default** button to restore the default settings for this Express Key. This will not change the settings for any of the other Express Keys.



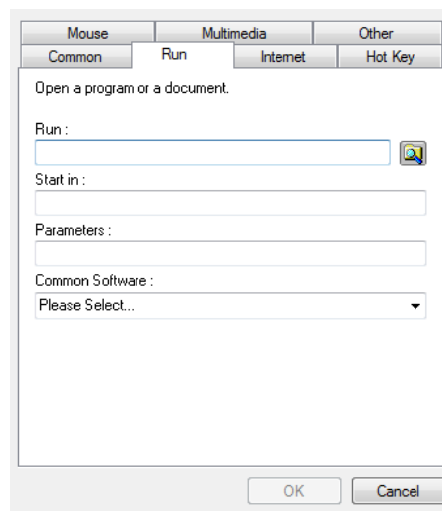
4.2 The Run Tab

Run: Type in the full drive, pathname, and filename of the program you want to execute. Alternatively, you can use the browse button to the right to locate and select the desired application.

Start in: Type in the full drive and pathname of the directory in which you want the program to execute.

Parameters: Enter any parameters you want applied to the selected application.

Common Software: Use this drop-down list box to automatically select the necessary commands and parameters to run the **TabTip** and **Journal** applications.



4.3 The Internet Tab

Network function: Select one of the predefined functions to perform. The available functions are:

- Back
- Forward
- Refresh
- Stop
- My Favorite
- IE
- E-Mail

Link to Kind of Service: This allows you to navigate to the specified web URL or send an email to the specified email address. This will call the default web browser or default email client. The two options are:

- Go to a Web Site
- Send an e-Mail

Address: Type in the complete URL (including **http://** part), if the **Go to a Web Site** option is selected, or the complete email address, if the **Send an e-Mail** option is selected.

The screenshot shows a dialog box titled 'Internet' with tabs for 'Mouse', 'Multimedia', and 'Other'. Under the 'Internet' tab, there are sub-tabs for 'Common', 'Run', 'Internet', and 'Hot Key'. The 'Network function' radio button is selected, and the 'Back' option is chosen from the dropdown menu. The 'Link to' radio button is also visible, with 'Go to a Web Site' selected in its dropdown menu. An empty text box for the 'Address' field is present below. The dialog has 'OK' and 'Cancel' buttons at the bottom.

4.4 The Hot Key Tab

The key combination to press: Use the check boxes to select whether the CTRL, ALT, SHIFT, and/or Windows keys should be used to modify the key selected in the drop-down list box. Use the drop-down list box to select the actual key that will be "pressed". Any key on a standard US PC keyboard can be specified, including the Print Screen key and up to 16 separate function keys. For example, put a checkmark in CTRL and select S from the list box to specify a CTRL+S key combination, which is the default Save File key combination for most programs.

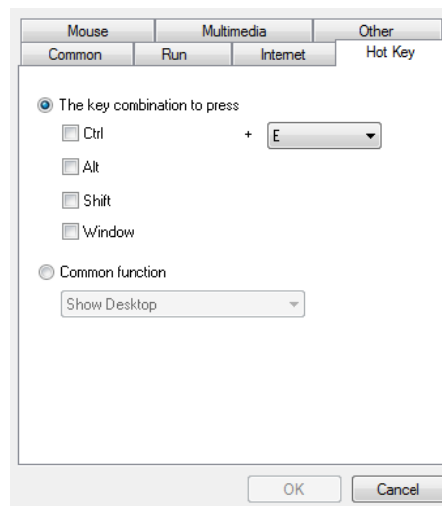
Common function: Select the type of function to perform. The available functions are:

Show Desktop

Switch Application

3D Switch Application (Windows Vista and Windows 7 only)

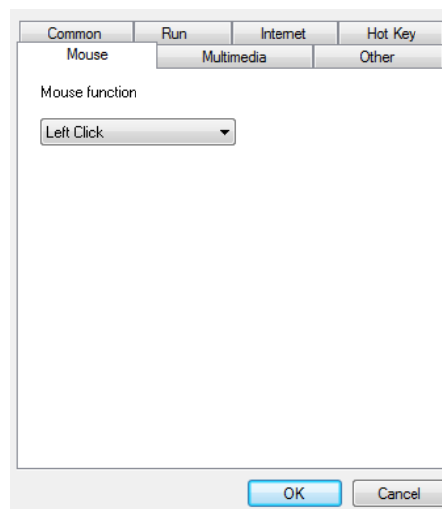
Hand Tool (Adobe Photoshop only)



4.5 The Mouse Tab

Mouse function: Select a mouse function to perform. The available mouse functions are:

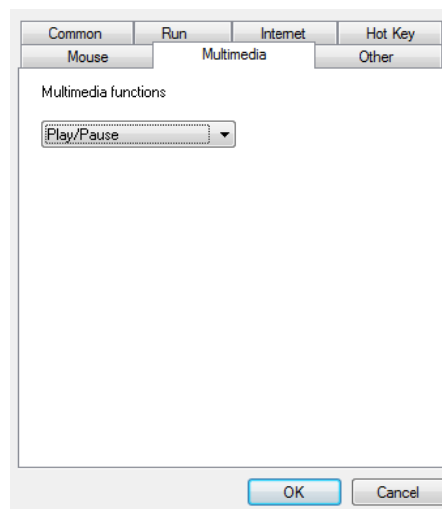
- Left Click
- Right Click
- Middle Click
- Left Double Click
- 4th Click
- 5th Click
- Wheel Up
- Wheel Down



4.6 The Multimedia Tab

Multimedia functions: Select one of the media player control functions to execute. All functions, except the two volume control functions, only work with Windows Media Player. The available functions are:

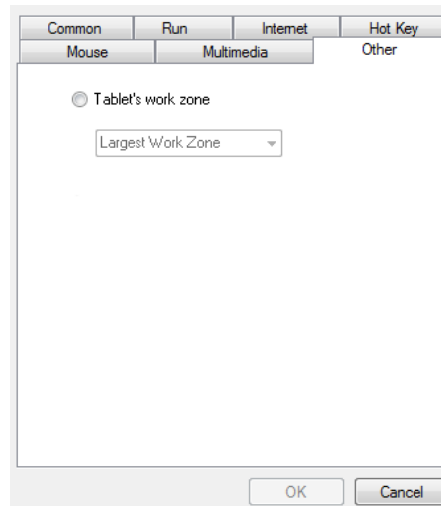
- Play/Pause
- Stop
- Previous
- Next
- Mute
- Volume Up
- Volume Down



4.7 The Other Tab

Tablet's work zone: Allows you to reset the screen area that corresponds to the tablet positioning system. The two available options are:

Largest Work Zone
Screen Ratio



5. The Scope Tab

The scope is the area on the tablet in which input can be made and the area on screen in which screen elements can be manipulated. You can set the scope in several different ways.

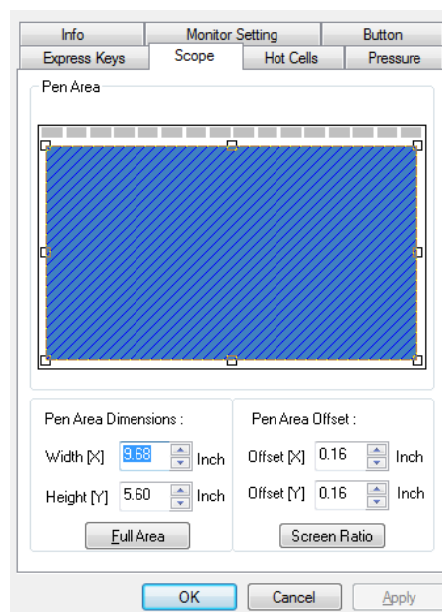
Pen Area: Use your mouse to drag the edges of the pen area to the desired size. The values in Pen Area Dimensions will change to reflect the changes you make.

Pen Area Dimensions: Specifies the full X,Y dimensions of the active pen area. The values are in inches and you can specify to two decimal places.

Pen Area Offset: Rather than specifying the size of the pen area, this option instead sets the horizontal and vertical distances from each corner of the tablet to the edge of the active pen area. The values are in inches and you can specify to two decimal places.

Full Area: Clicking this button sets the scope to the largest possible size.

Screen Ratio: Clicking this button sets the scope to a size that matches the screen aspect ratio.



6. The Hot Cells Tab

Hot Pad Layout: Click the location of the Hot Cell you wish to edit.

Hot Edges: This tablet supports Hot Cells along the Upper edge of the drawing area only, so the Lower, Left, and Right options are greyed out. You can disable Hot Cells by deselecting the Upper Hot Edge.

Drop-Down List Box: The drop-down list box in the center of the dialog is used to directly select one of the available Hot Cells locations. You can click in the text area and type in a new identifier for the selected Hot Cell.

Text Area: The text area underneath the drop-down list box is used to display the function assigned to the currently selected Hot Cell. The text in this area is generated from the settings you have created for the selected Hot Cell and cannot be directly edited.

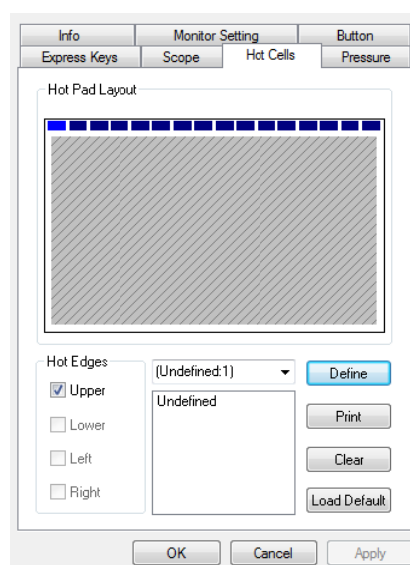
Print: Click this button to generate a printout listing all defined Hot Cells and their selected functions.

Clear: Click this button to clear all settings for the currently selected Hot Cell.

Load Default: Click this button to restore the default Hot Cell settings for all Hot Cells. This has the same effect as clicking the **Clear** button for each Hot Cell entry.

Define: Click this button to open the **Pen Tablet** dialog, with which you can define the function to be executed for the currently selected Hot Cell.

*The selected Hot Cell will perform the function that is displayed when you click the **OK** button.*



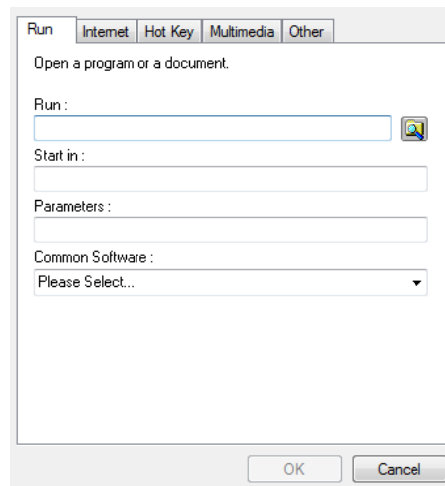
6.1 The Run Tab

Run: Type in the full drive, pathname, and filename of the program you want to execute. Alternatively, you can use the browse button to the right to locate and select the desired application.

Start in: Type in the full drive and pathname of the directory in which you want the program to execute.

Parameters: Enter any parameters you want applied to the selected application.

Common Software: Use this drop-down list box to automatically select the necessary commands and parameters to run the **TabTip** and **Journal** applications.



6.2 The Internet Tab

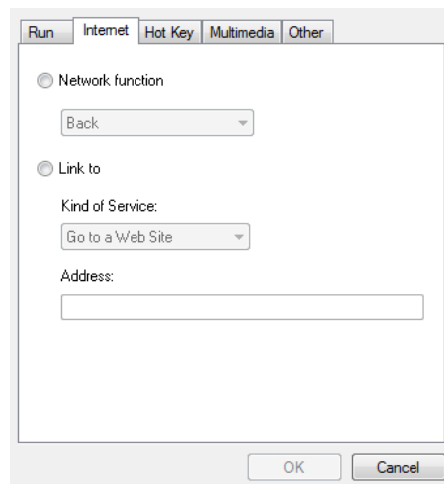
Network function: Select one of the predefined functions to perform. The available functions are:

- Back
- Forward
- Refresh
- Stop
- My Favorite
- IE
- E-Mail

Link to Kind of Service: This allows you to navigate to the specified web URL or send an email to the specified email address. This will call the default web browser or default email client. The two options are:

- Go to a Web Site
- Send an e-Mail

Address: Type in the complete URL (including http://), if the **Go to a Web Site** option is selected, or the complete email address, if the **Send an e-Mail** option is selected.



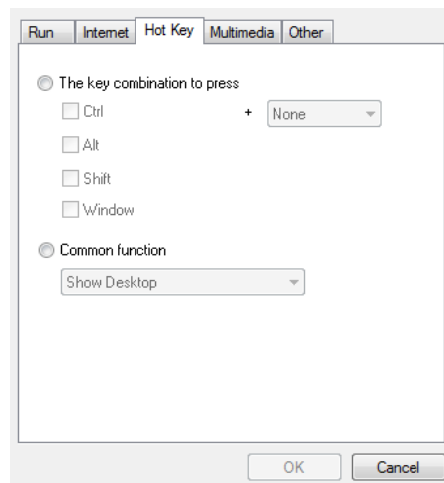
The image shows a dialog box titled 'Internet' with tabs for 'Run', 'Internet', 'Hot Key', 'Multimedia', and 'Other'. The 'Internet' tab is active. Inside the dialog, there are two radio buttons: 'Network function' (selected) and 'Link to'. Under 'Network function', there is a dropdown menu currently showing 'Back'. Under 'Link to', there is a 'Kind of Service:' label followed by a dropdown menu showing 'Go to a Web Site'. Below that is an 'Address:' label followed by a text input field. At the bottom of the dialog are 'OK' and 'Cancel' buttons.

6.3 The Hot Key Tab

The key combination to press: Use the check boxes to select whether the CTRL, ALT, SHIFT, and/or Windows keys should be used to modify the key selected in the drop-down list box. Use the drop-down list box to select the actual key that will be "pressed". Any key on a standard US PC keyboard can be specified, including the Print Screen key and up to 16 separate function keys. For example, put a checkmark in CTRL and select S from the list box to specify a CTRL+S key combination, which is the default Save File key combination for most programs.

Common function: Select the type of function to perform. The available functions are:

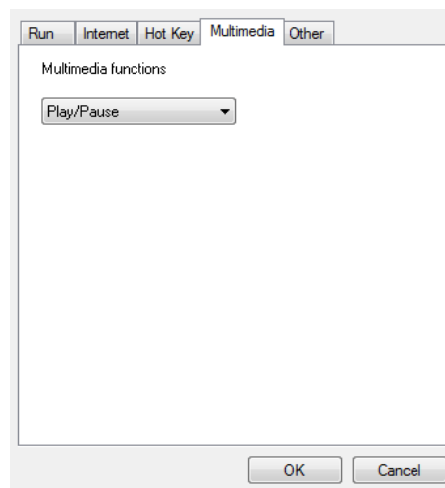
- Show Desktop
- Switch Application
- 3D Switch Application (Windows Vista and Windows 7 only)
- Hand Tool (Adobe Photoshop only)



6.4 The Multimedia Tab

Multimedia functions: Select one of the media player control functions to execute. All functions, except the two volume control functions, only work with Windows Media Player. The available functions are:

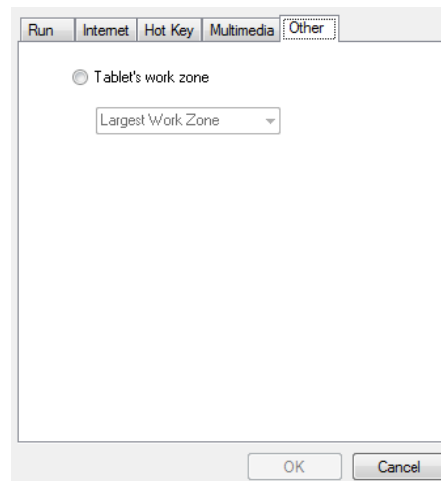
- Play/Pause
- Stop
- Previous
- Next
- Mute
- Volume Up
- Volume Down



6.5 The Other Tab

Tablet's work zone: Allows you to reset the screen area that corresponds to the tablet positioning system. The two available options are:

Largest Work Zone
Screen Ratio



7. The Pressure Tab

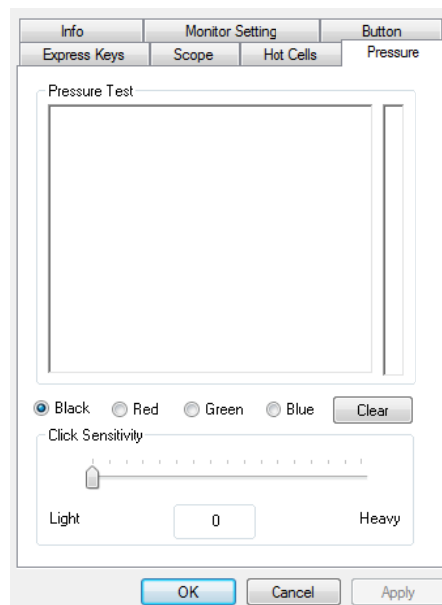
This dialog allows you to test the pressure sensitivity of the pen and to adjust the sensitivity of the pen's "click" function.

Pressure Test: Use your pen within this area to test the pressure sensitivity. Pushing hard will draw a thick, bold line, while light pressure will result in a thin, light line. The vertical bar to the right of the test area will increase in amplitude to indicate the amount of pressure being applied.

Black, Red, Green, Blue: Use these radio buttons to select the pen color to use during the test. This allows you to see the effects with the four primary colors.

Clear: Click this button to clear everything from the Pressure Test area.

Click Sensitivity: Use this slider to set the sensitivity at which a "click" is detected with the tip. If you have a heavy drawing hand or are drawing thicker, heavier lines, you will want to use a heavier click sensitivity.



III. Pen Storage and Maintenance

1. Storing the Digital Pen

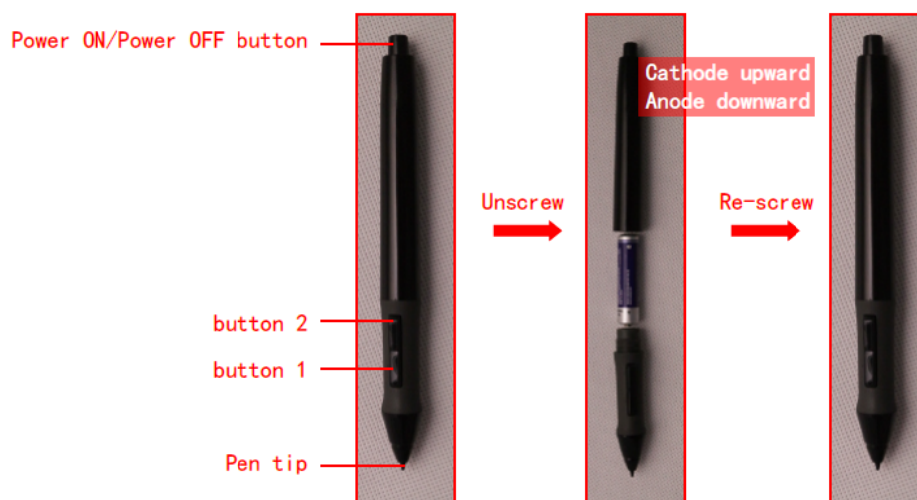
The digital pen should be stored in such a way that nothing touches the tip. Prolonged pressure on the tip, even a slight pressure, can damage the ability of the pen to use the full range of pressure sensitivity.

If the pen will simply be unused overnight or for any other short period of time, placing it in the included pen holder or horizontally on the desk is sufficient. For long-term storage or shipping, the tip and battery should be removed.

2. Replacing the Battery in the Digital Pen

To install, remove, or replace the battery in the digital pen, perform the following steps:

- a. Unscrew the top half of the pen from the bottom half. The junction is at the upper edge of the rubberized grip portion of the pen.
- b. Allow the old battery to fall out of the top half of the pen. Dispose of the battery in accordance with local regulations.
- c. Insert a new AAA alkaline battery (included) in the top half of the pen. The positive lead should be visible in the open pen half so that it makes contact with the bottom half when the pen is reassembled.
- d. Carefully line up the threads of the bottom and top halves of the pen and screw it together. Take care not to cross thread the pen because the plastic threads can be easily damaged. Screw the pen together firmly but not too tightly.



3. Replacing the Pen Tip

If the pen tip needs replacing or removal due to long-term storage, perform the following steps as applicable:

- a. Open the pen holder and remove the metal Pen Clip.
- b. Position the Pen Clip over the exposed portion of the pen tip. Squeeze the clip with your fingers to provide a firm grip on the tip.
- c. Pull gently until the tip is completely removed.
- d. Take a replacement tip out of the pen holder and gently insert it into the pen until it is fully seated into place.
- e. Use the Pressure Test dialog in the driver utility to test the operation of the newly replaced tip.

