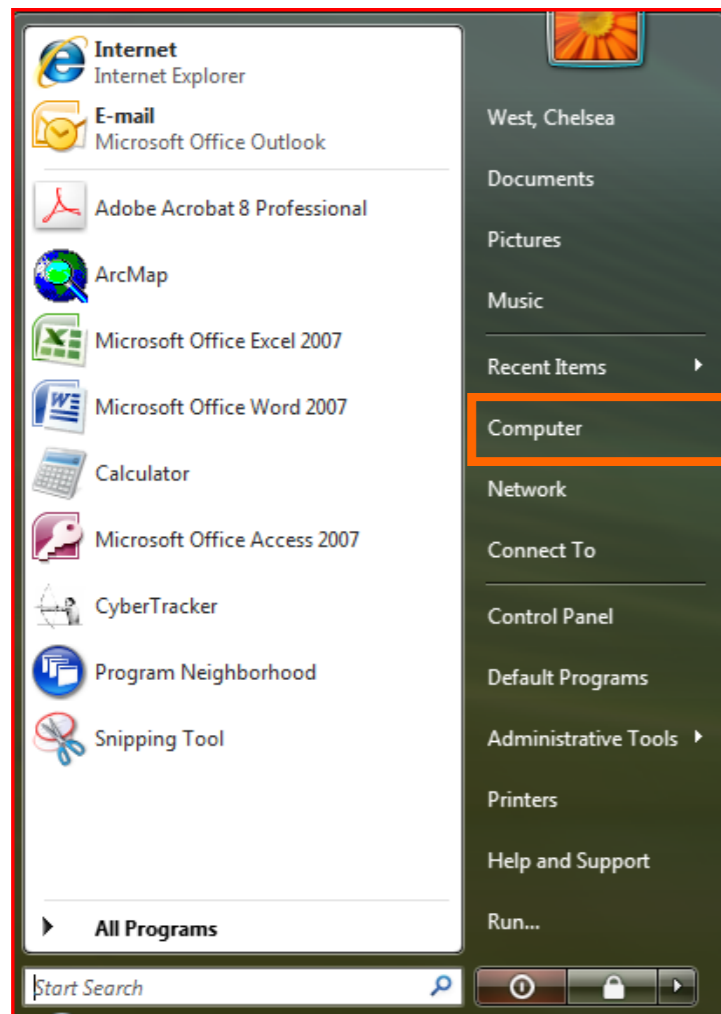
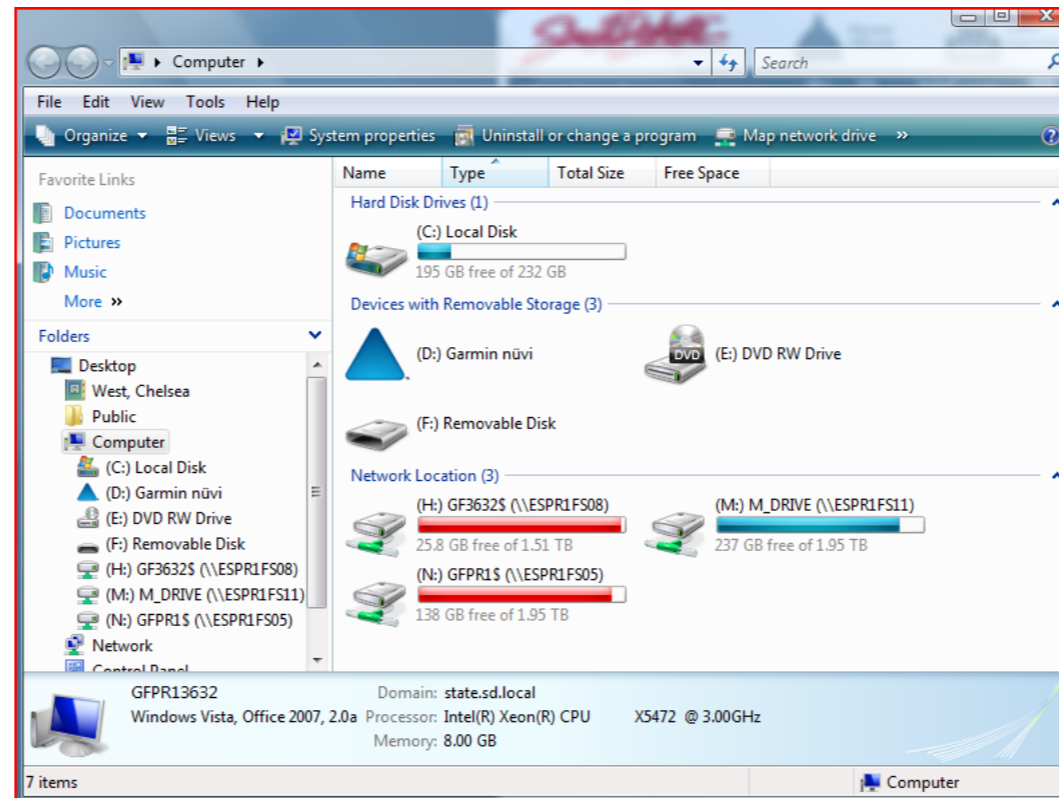


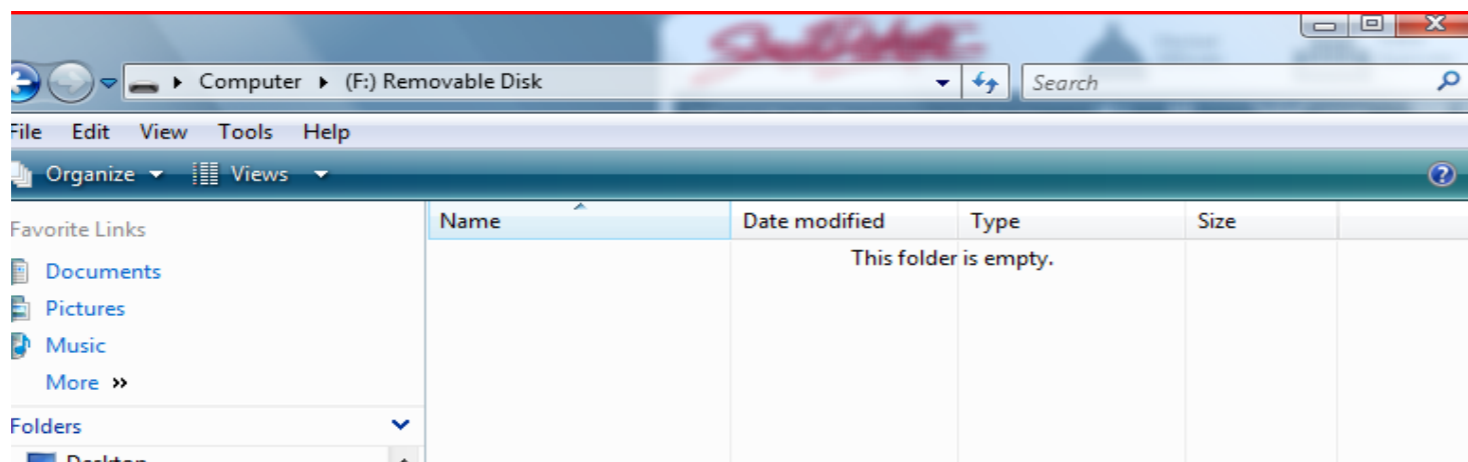
Solution 3: Using SD (microSD card) to display maps.



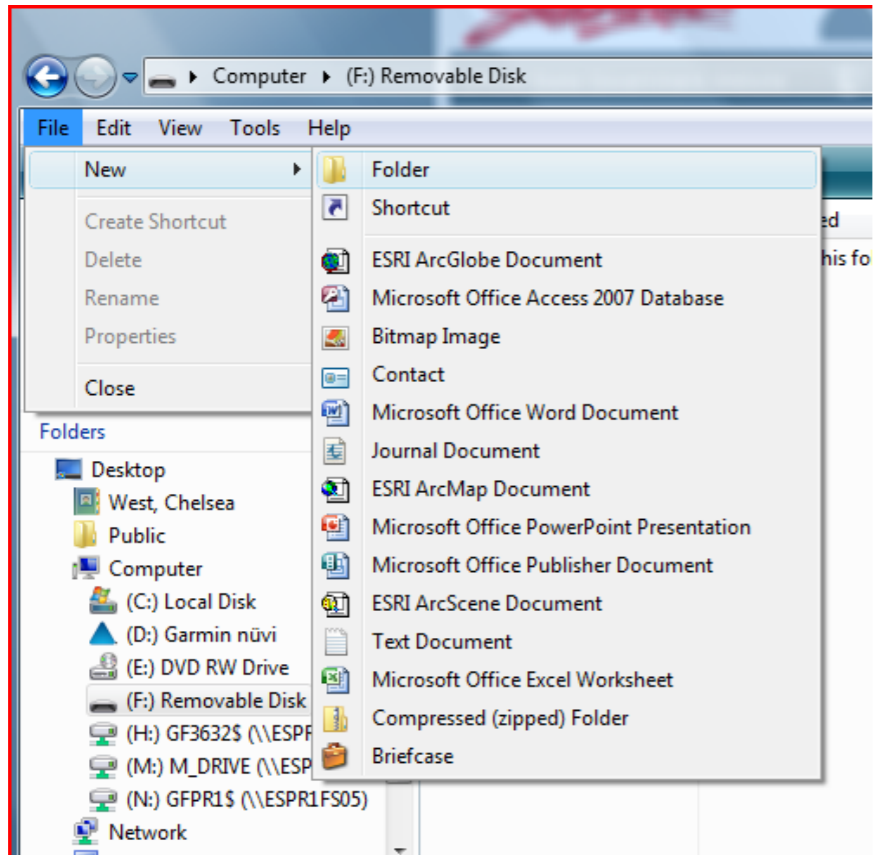
1. Click Start and go to “Computer.”



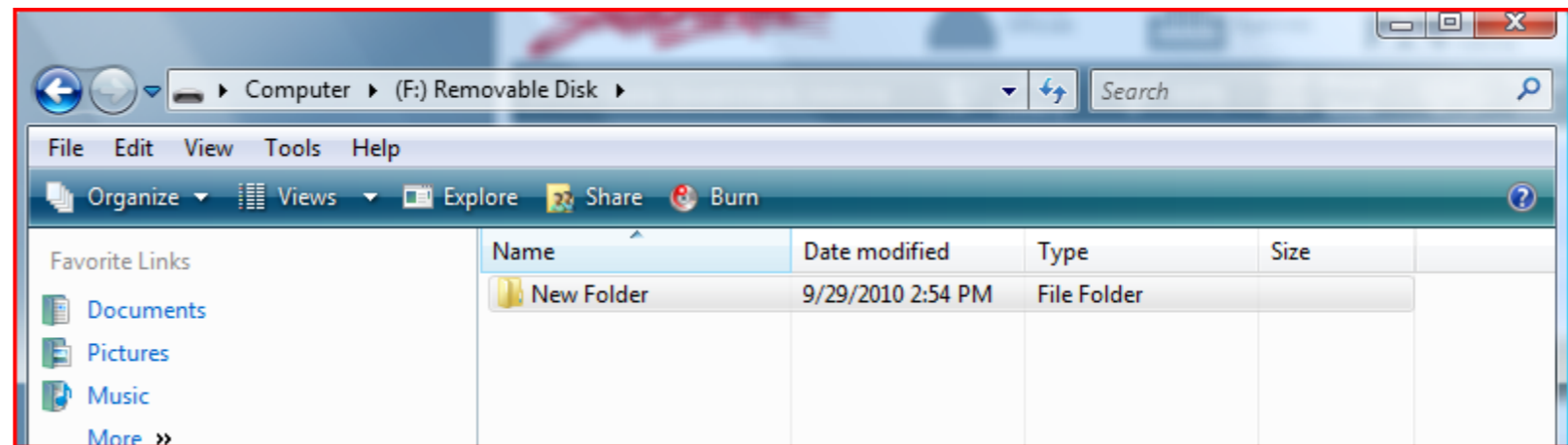
2. Under my computer, double click (F:) Removable Disk.



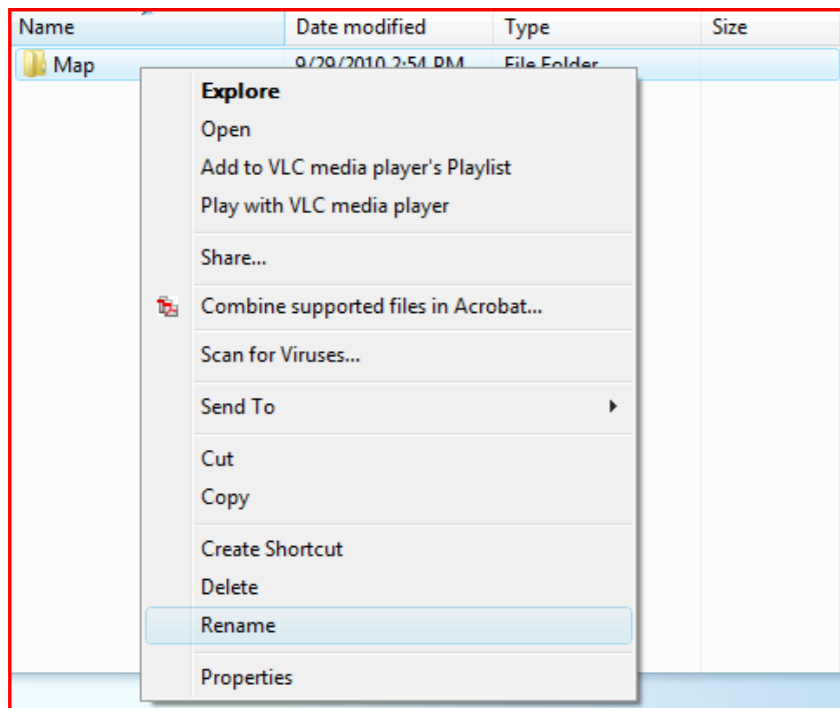
3. This is what it will look like if you have a blank SD card.



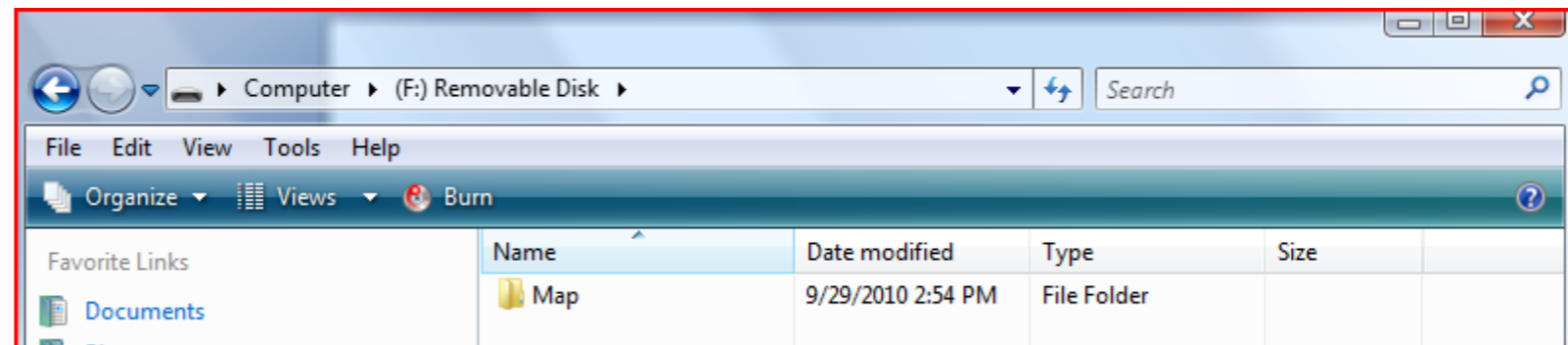
4. You will need to create a new folder. Click on File - New - Folder.



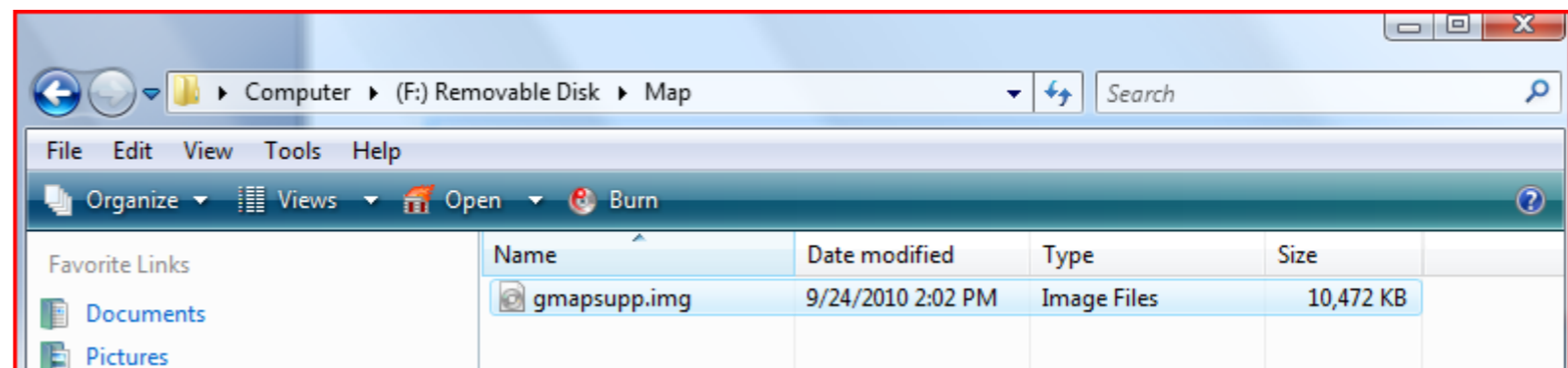
5. The new folder is automatically named “New Folder.” You will need to rename the folder to “Map.”



6. To do this, right click on the folder and select “Rename.” Name the new folder: Map.



7. Copy gmapsupp.img file to the map folder (this is the file you downloaded and unzipped from the website).



8. Refer to solution 2 to check to see if map is recognized by device.