

# SWOPE TOYOTA Local HOT DEALS



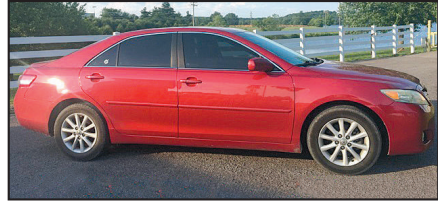
**2012 Scion tC**  
One Owner,  
Gas Saver.  
#U19982111  
**\$8,541**

ALL COME WITH COMPLIMENTARY 2 YR/24,000 MILE MAINTENANCE



**2001 Chevy SILVERADO**  
1500, 4WD,  
One Owner.  
#T19711871  
**\$7,535**

ALL COME WITH COMPLIMENTARY 2 YR/24,000 MILE MAINTENANCE



**2011 Toyota CAMRY**  
FWD, Sunroof,  
Sharp!  
#T19781503  
**\$8,716**

ALL COME WITH COMPLIMENTARY 2 YR/24,000 MILE MAINTENANCE



**2010 Honda ODYSSEY**  
EX-L, Sunroof,  
Rear DVD.  
#T19731376  
**\$9,876**

ALL COME WITH COMPLIMENTARY 2 YR/24,000 MILE MAINTENANCE



**2015 Chevy SONIC**  
LTZ, Low Miles,  
Gas Saver!  
#T19711642  
**\$10,981**

ALL COME WITH COMPLIMENTARY 2 YR/24,000 MILE MAINTENANCE



**2014 Toyota SIENNA**  
L, One Owner.  
#T19781801  
**\$14,389**

ALL COME WITH COMPLIMENTARY 2 YR/24,000 MILE MAINTENANCE



**2013 Toyota RAV4**  
XLE, One Owner,  
Sunroof, FWD,  
Rear Camera.  
#T19711301  
**\$14,794**

ALL COME WITH COMPLIMENTARY 2 YR/24,000 MILE MAINTENANCE

**SWOPE TOYOTA**  
The ONLY name you need for everything automotive.

1085 N. Dixie Hwy. Elizabethtown **270-506-4047**  
[www.swopetoyota.com](http://www.swopetoyota.com)

**TOYOTA GREAT AMERICAN Summer Event**

**BIG SAVINGS on the BEST SELECTION!**

**ALL-NEW RAV4**

**\$1250 TFS RETAIL CASH<sup>1</sup>**  
On any all-new 2019 RAV4  
When financed through Toyota Financial Services.

**\$209 Per Mo.**

-or- Lease an all-new **2019 RAV4 LE**  
8-Speed AT ECT-i 4-Door FWD SUV  
Gas Model #4430  
\$209/mo. 3-Year Low Mileage  
10,000-Mile/Year Lease  
36 Mos. | \$2999 Due at Signing

FOR ALL TOYOTA OFFERS  
**buyatoyota.com**

**MILITARY REBATE**

Expanded Toyota Military Rebate Program For **MILITARY PERSONNEL & THEIR FAMILIES**

**\$500 OVER & ABOVE ALL CURRENT TOYOTA OFFERS!<sup>10</sup>**

- ★ NOW INCLUDES ALL RETIRED MILITARY ★ (Regardless of Time Since Retirement)
- ★ ACTIVE-DUTY & INACTIVE RESERVE ★ MILITARY PERSONNEL
- ★ HONORABLY DISCHARGED VETERANS ★ Within 2 Years of Service  
See dealer for details.

**HIGHLANDER**

**BUILT IN THE USA<sup>3</sup>**

any new 2019 HIGHLANDER (Excludes Hybrid)

**\$2000 Cash Back<sup>4</sup>**  
\$750 CASH BACK on any new 2019 HIGHLANDER HYBRID<sup>4</sup>

**\$259 Per Mo.**

-or- Lease a new **2019 HIGHLANDER LE**  
6-Speed AT ECT-i 4-Door L4 FWD SUV  
Gas Model #6942  
\$259/mo. 3-Year Low Mileage  
10,000-Mile/Year Lease  
36 Mos. | \$2999 Due at Signing

**TACOMA**

**BUILT IN THE USA<sup>3</sup>**

any new 2019 TACOMA (Excludes TRD Pro)

**\$750 Cash Back<sup>4</sup>**

**\$229 Per Mo.**

-or- Lease a new **2019 TACOMA SR 4X4 DBL CAB**  
6-Speed AT ECT-i 4-Door Pickup Truck  
Model #7594  
\$229/mo. 3-Year Low Mileage  
10,000-Mile/Year Lease  
36 Mos. | \$2999 Due at Signing

Ask about the **\$500 COLLEGE GRAD REBATE PROGRAM<sup>11</sup>**  
**THAT'S OVER & ABOVE ALL OTHER INCENTIVES!**

**CAMRY**

**BUILT IN THE USA<sup>3</sup>**

any new 2019 CAMRY (Includes Hybrid)

**\$1500 Cash Back<sup>4</sup>**

**\$209 Per Mo.**

-or- Lease a new **2019 CAMRY LE**  
8-Speed AT ECT-i 4-Door Sedan  
Gas Model #2532  
\$209/mo. 3-Year Low Mileage  
10,000-Mile/Year Lease  
36 Mos. | \$2999 Due at Signing

**ALL-NEW 2020 COROLLA**

**BUILT IN THE USA<sup>3</sup>**

any all-new 2020 COROLLA (Includes Hybrid)

**\$750 TFS RETAIL CASH<sup>1</sup>**  
On any all-new 2020 Corolla  
When financed through Toyota Financial Services.

**\$199 Per Mo.**

-or- Lease an all-new **2020 COROLLA LE**  
CVT-i 4-Door Sedan  
Gas Model #1852  
\$199/mo. 3-Year Low Mileage  
10,000-Mile/Year Lease  
36 Mos. | \$2999 Due at Signing

**ToyotaCare**

Every New Toyota Comes With ToyotaCare.<sup>12</sup>  
**Toyota's No Cost Maintenance Plan.**

**TUNDRA** **BUILT IN THE USA<sup>3</sup>**

any new 2019 TUNDRA (Excludes TRD Pro)

**0% for 60 Mos.<sup>9</sup>** -or- **\$2500 Cash Back<sup>4</sup>**

**SIENNA** **BUILT IN THE USA<sup>3</sup>**

any new 2019 SIENNA

**0% for 60 Mos.<sup>9</sup>** -or- **\$3000 Cash Back<sup>4</sup>**

**MORE BIG CASH BACK**

'19 Avalon	'19 Avalon Hybrid	'19 Sequoia	'19 Corolla Hatchback	'19 C-HR
\$3000	\$3000	\$1500	\$1000	\$1000

1. All-New 2019 RAV4 (includes Hybrid) & All-New 2020 Corolla (includes Hybrid). Customers financing through TFS using standard rates qualify for the \$1,250/RAV4 & \$750/Corolla TFS Standard Rate Retail Cash. TFS APR contract term is less than or equal to 72 months. Subject to approved credit. 2. All-New 2019 RAV4 LE FWD Model 4430. Lease based on net cap cost of \$23,556. Lease end purchase option \$17,193. 3. Toyota vehicles and components are built using U.S. and globally sourced parts. 4. Cash back direct from Toyota Motor Sales, U.S.A., Inc. 5. New 2019 Highlander LE Model LE L FWD Model 6942. Lease based on net cap cost of \$28,408. Lease end purchase option \$20,566. 6. New 2019 Tacoma SR 4x4 Double Cab Model 7594. Lease based on net cap cost of \$29,385. Lease end purchase option \$25,966. 7. New 2019 Camry LE Model 2532. Lease based on net cap cost of \$21,288. \$500 TFS Lease Subvention Cash must be applied toward due at signing - which reduces \$3,499 due at signing to \$2,999. Lease end purchase option \$14,310. 8. All-new 2020 Corolla LE Model 1852. Lease based on net cap cost of \$18,065. Lease end purchase option \$12,255. 9. New 2019 Tundra (excludes TRD Pro) & 2019 Sienna 0% APR financing for 36 months with \$2,78 per \$1,000 borrowed OR 0% APR financing for 48 months with \$20.83 per \$1,000 borrowed OR 0% APR financing for 60 months with \$16.57 per \$1,000 borrowed OR 1.9% APR for 72 months with \$14.71 per \$1,000 borrowed. Subject to approved credit through Toyota Financial Services Tier 1 & 1 only. Not all customers will qualify for lowest rate - see dealer for terms and conditions. 10. Qualified military personnel and household members of eligible qualifying military personnel are eligible for rebates in addition to all other incentives, depending on model, through Toyota Motor Sales, U.S.A., Inc., when leased or financed through Toyota Financial Services. Must take retail delivery from select new dealer stock. The Toyota Military Rebate Program is not compatible with the Toyota College Rebate Program. See participating dealer or visit buyatoyota.com for complete details. 11. The Toyota College Rebate Program is not compatible with the Military Rebate Program. See participating dealer or visit buyatoyota.com for complete details. 12. ToyotaCare covers normal factory scheduled service for 2 years or 25,000 miles, whichever comes first. 24-hour roadside assistance is also included for 2 years and unlimited miles. See Toyota dealers for details and exclusions. Valid only in the continental U.S. and Alaska. \*NO SECURITY DEPOSIT. Subject to approved credit through Toyota Financial Services. Not all customers will qualify - Tier 1 PLUS customers ONLY. Excludes state and local taxes, tags, registration and title, and insurance. License and applicable fees are extra. Other options and dealer charges extra. Your payment may vary depending on final price. Lessee may be charged for excessive wear based on Toyota Financial Services standards for normal use and for mileage in excess of 30,000 miles at the rate of \$0.15 per mile (low mileage lease). \$350 Disposition Fee is due at lease termination. For 1, 2, 4, 5, 6, 7, 8, 9, 10 & 11: Must take retail delivery from new 2019 & 2020 dealer stock between 6/1/19 and 7/31/19. Customer Cash & Lease offers may not be combined. See participating dealer for complete details. Individual dealer prices and document fees may vary. Offers may vary by region. VEHICLE IMAGES USED FOR ILLUSTRATION PURPOSES ONLY. Expiration for these offers is 7/8/19.

**Let's Go Places**

VISIT YOUR LOCAL KENTUCKY TOYOTA DEALER TODAY!

# SWOPE TOYOTA

Elizabethtown, KY • 1-800-999-7591