

Eduroam Setup for Windows 10.

THESE INSTRUCTIONS ARE FOR WINDOWS 10

The screenshots and menu options referenced here may be slightly different depending on the edition of Windows you are running.

This document contains the following instructions.

1. Configuring Your Windows 10 device for eduroam
2. Connecting to eduroam
3. Updating credentials if you change your password
4. Downloading and Installing the Certificate required to connect to eduroam

Please Note:

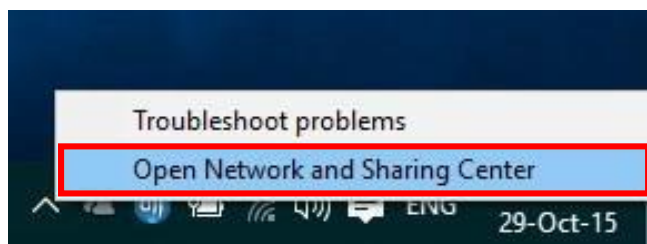
Windows 10 will not permit you to simply select eduroam from your list of wireless networks and enter your credentials. You must follow the instructions below.

1: Configuring Your Windows 10 device for eduroam

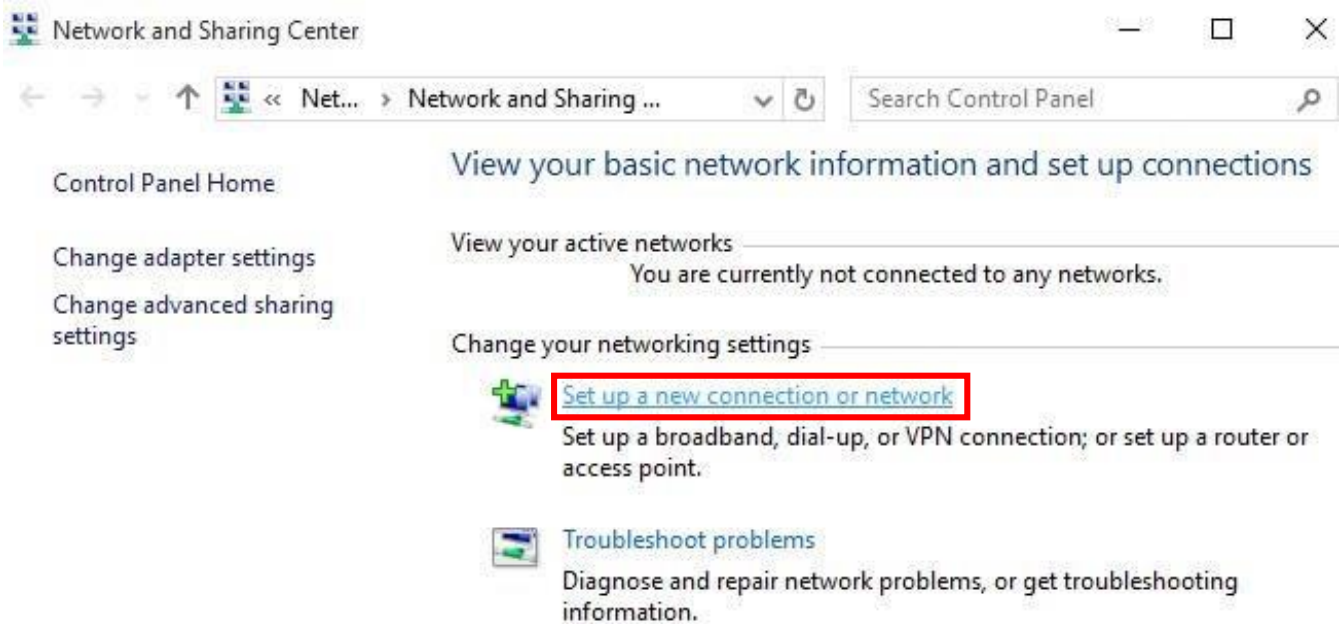
Windows 10 requires eduroam credentials to be saved/stored therefore if you change your network password you will need to follow the instructions on “Updating credentials if you change your password”.

Setting up the eduroam connection

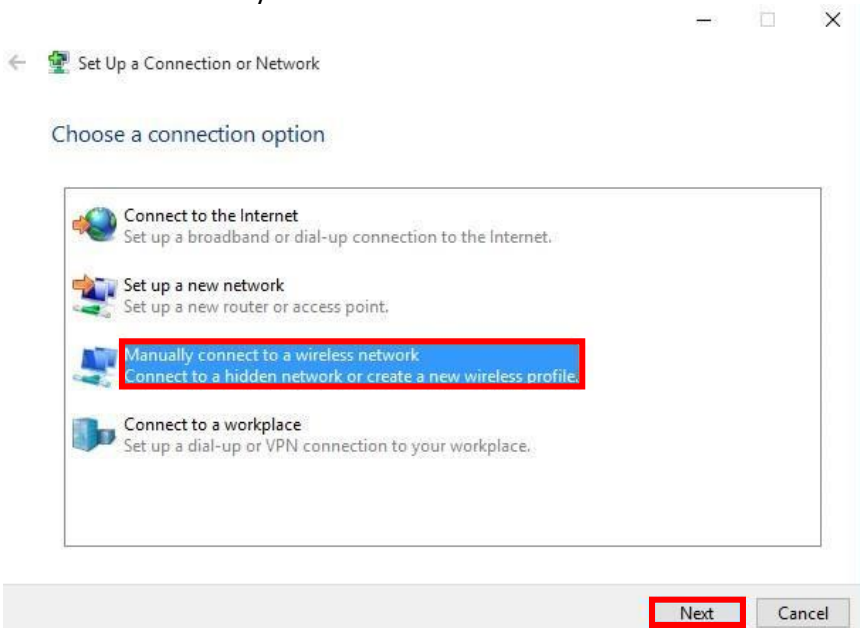
1.1 Right click on the “Wi-Fi/Wireless” icon on the System tray, as highlighted in the screen below, and then click on the “Open Network and Sharing Centre” link.



1.2 Choose “Set up a new connection or network”.



1.3 Click on “Manually connect to a wireless network”. Click on the “Next” button.



1.4 Type in/complete the network details exactly as shown in the diagram below, then click on the “Next” button

Network Name: eduroam

Security type: WPA2-Enterprise

Encryption Type: AES

Select “Start this connection automatically”

← Manually connect to a wireless network

Enter information for the wireless network you want to add

Network name:

Security type:

Encryption type:

Security Key: Hide characters

Start this connection automatically

Connect even if the network is not broadcasting

Warning: If you select this option, your computer's privacy might be at risk.

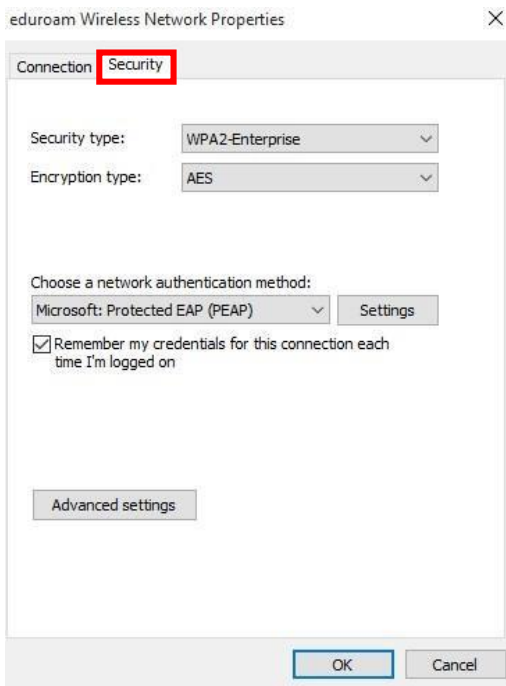
1.5 Click on “Change Connection Settings”.

← Manually connect to a wireless network

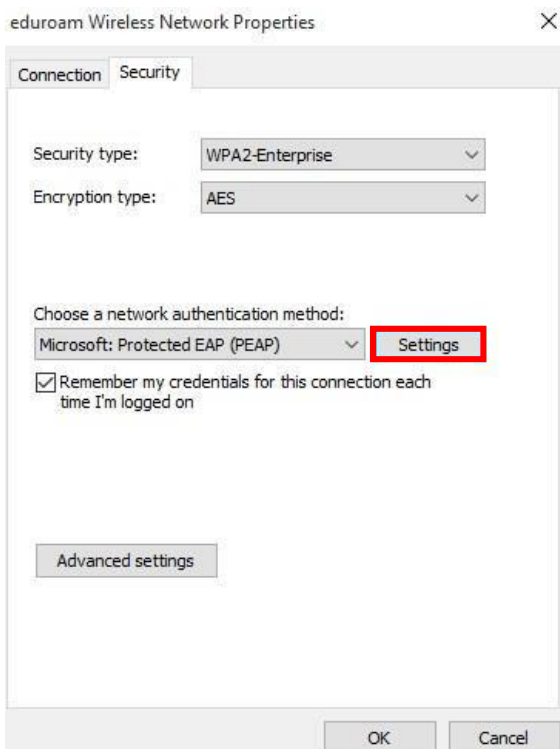
Successfully added eduroam

[→ Change connection settings](#)
Open the connection properties so that I can change the settings.

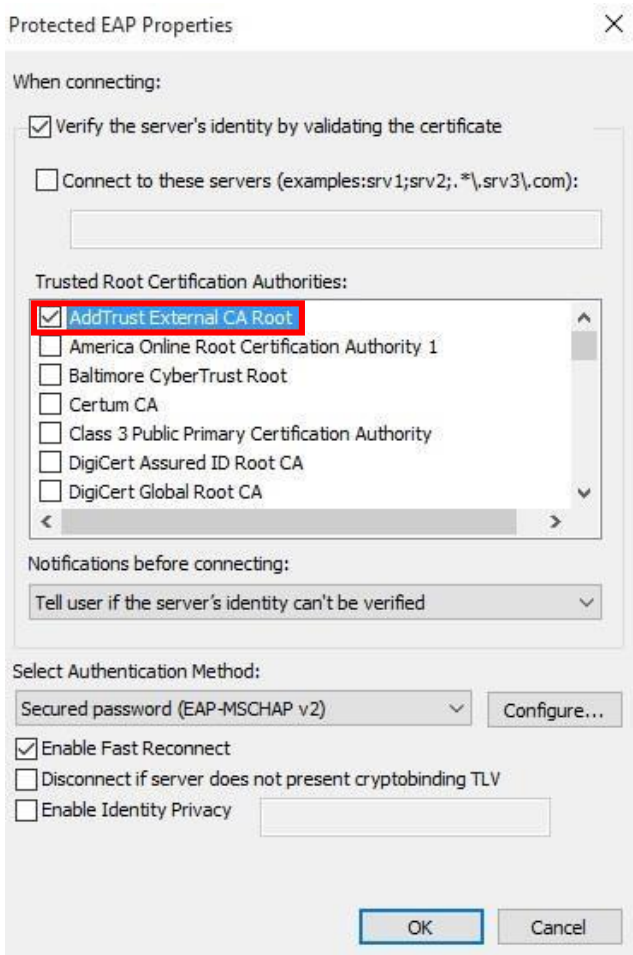
1.6 Click on the “Security” tab at the top of the dialog box.



1.7 Click on the “Settings” button (beside the pull down menu where it says “Microsoft: Protected EAP (PEAP)”).

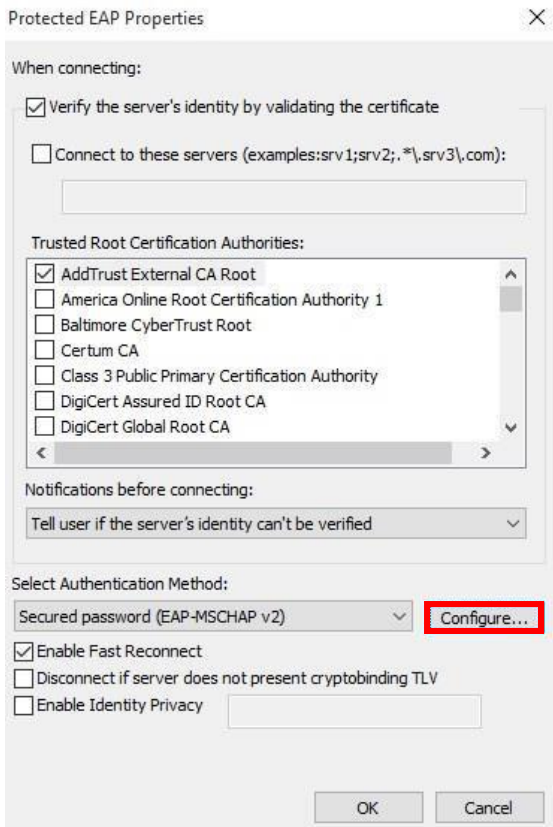


1.8 Ensure the box beside “Verify the server’s identity by validating the certificate” is checked. From the list shown below labelled “Trusted Root Certification Authorities”, scroll down and choose “AddTrust External CA Root” by checking the box beside it. (Please see image on next page).

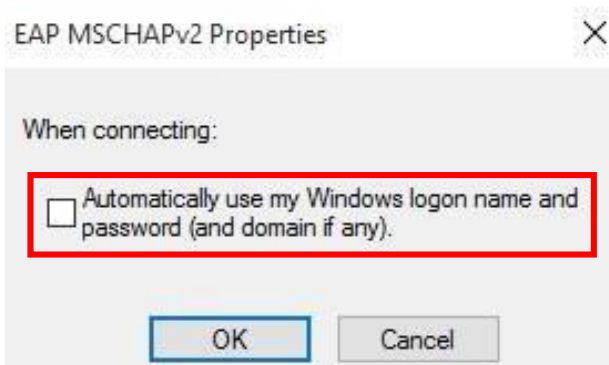


Please Note: If this certificate is not listed on your machine, close the window above by clicking on the “Cancel” button, but leaving the screen from step 8 open. Please go to “Downloading and installing the security certification” further down the page to install the certificate, then return to step 8 to set continue setting up the connection.

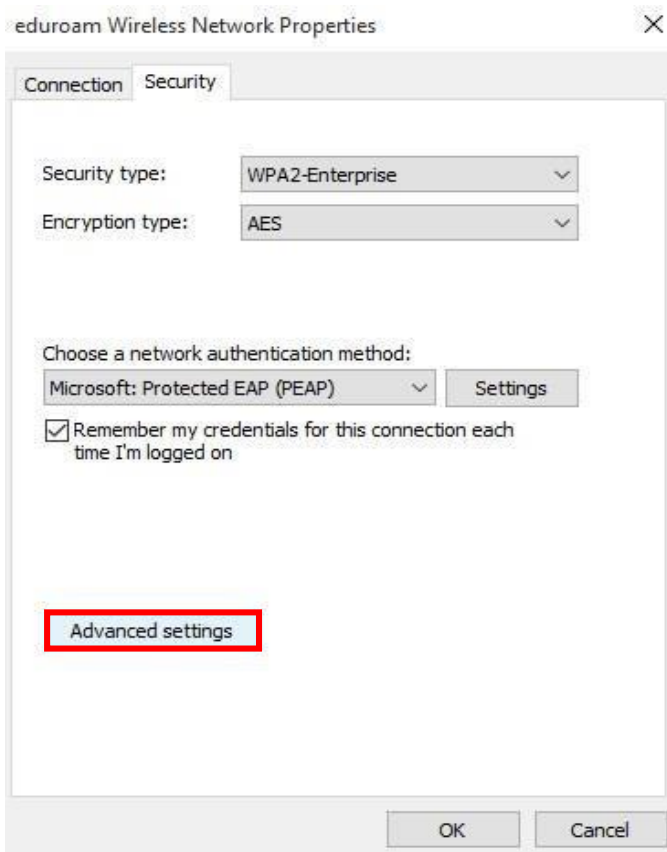
1.9 Click on the “Configure...” button (located beside “Secured password (EAP-MSCHAPv2)”).



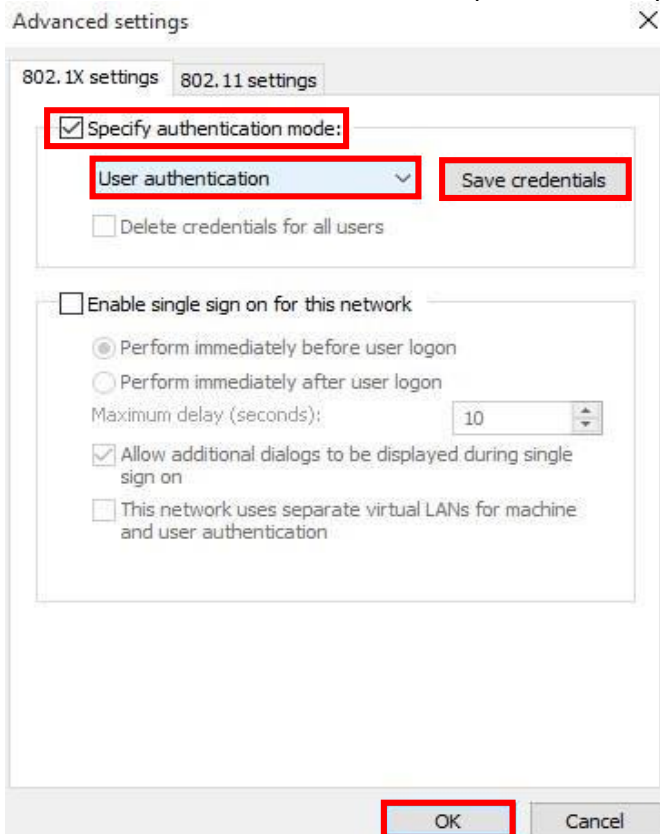
1.10 Ensure the checkbox beside “Automatically use my Windows logon name and password” is **unchecked** as in the screen below. Click on the “OK” button. Click on the “OK” button on the “Protected EAP Properties” window.



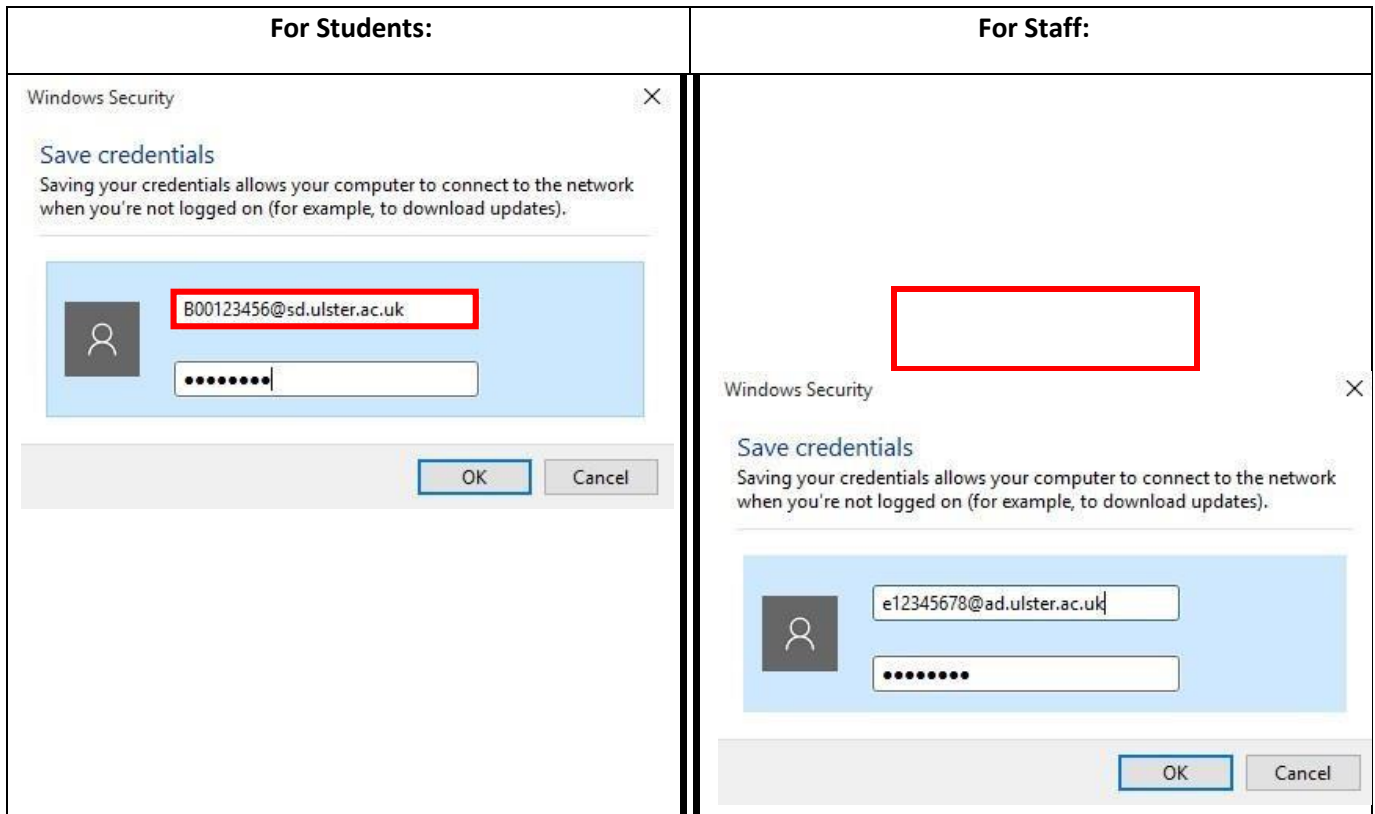
1.11 Click on the “Advanced Settings” button near the bottom of the window.



1.12 Check the box beside “Specify authentication mode”, and select “User authentication” from the menu below. Click on the “Save Credentials” button. (Please see image on next page).



1.13 Enter your eduroam login details which are:



For students:

Username: Your student B Code@sd.ulster.ac.uk
 Password: Your University network password

For staff:

Username: Your staff ecode@ad.ulster.ac.uk
 Password: Your University network password Click on the “OK” button.

1.14 Click “OK” on any dialog boxes which are still open. Close the “Manage Wireless Networks” window.

2: Connecting to eduroam

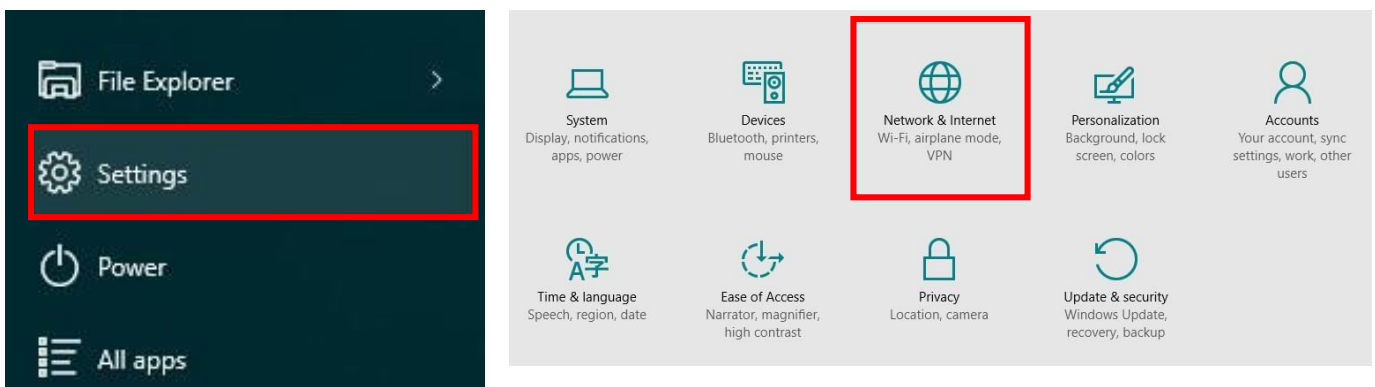
2.1 To connect to eduroam, left click on the “Wi-Fi/Wireless” icon in the System tray.

2.2 Click on “eduroam” and click on the “Connect” button. Select the “Connect Automatically” checkbox. **Please note:** Most institutions will use “eduroam” as the name of their network. If an organisation offers an eduroam visitor service, but you cannot see “eduroam” in the list of available Wi-Fi networks, please contact the local service desk or consult posters to see what name they are using.

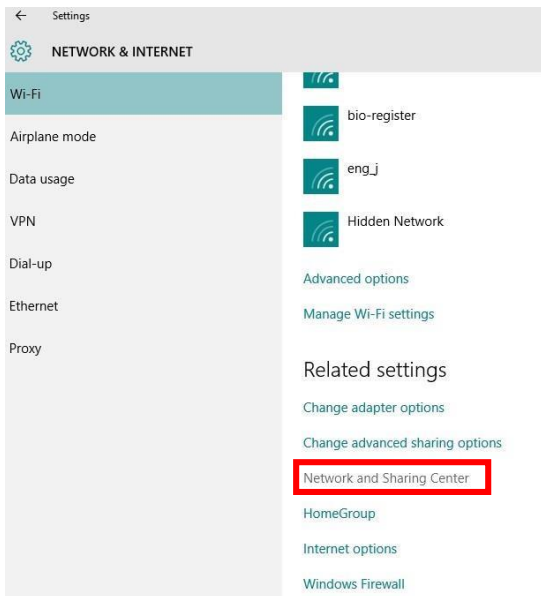


3. Updating credentials if you change your password

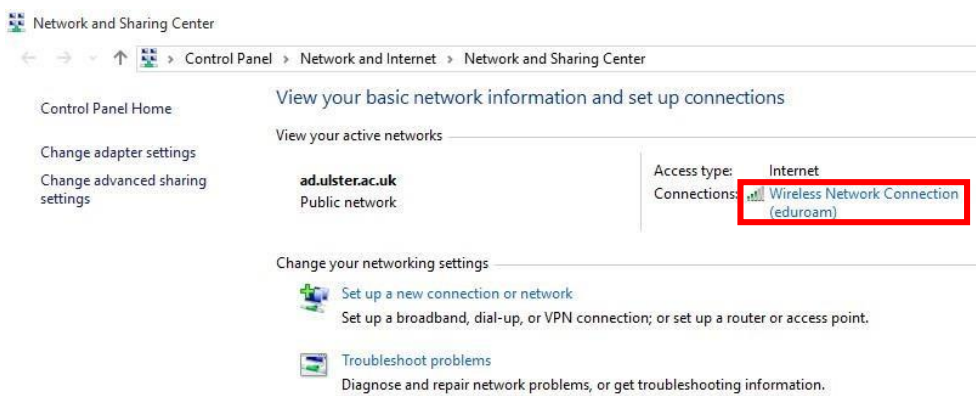
3.1 From the Windows Menu select “Settings” then choose “Network & Internet” as shown below:



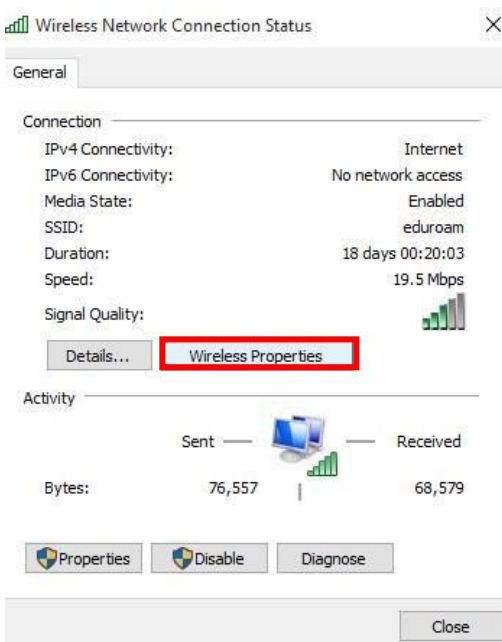
3.2 Next select “Network and Sharing Center”



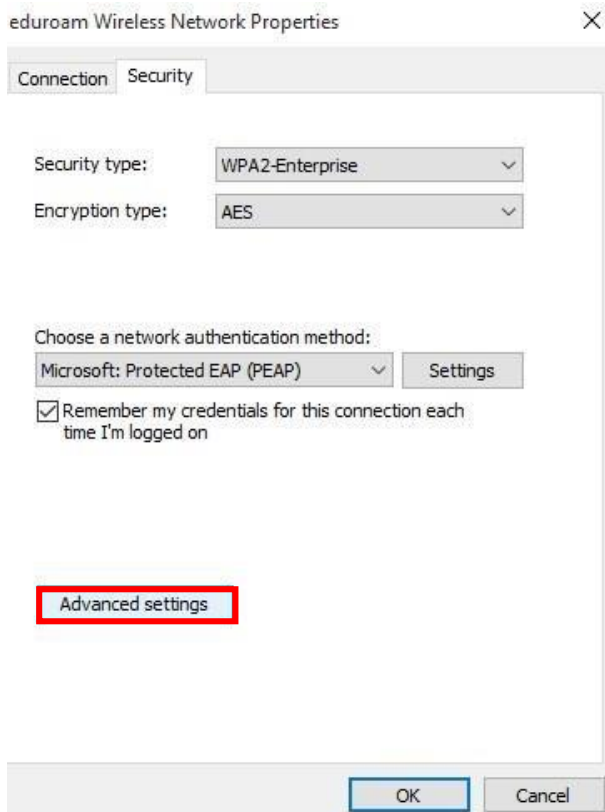
3.3 Select the eduroam Wi-Fi connection



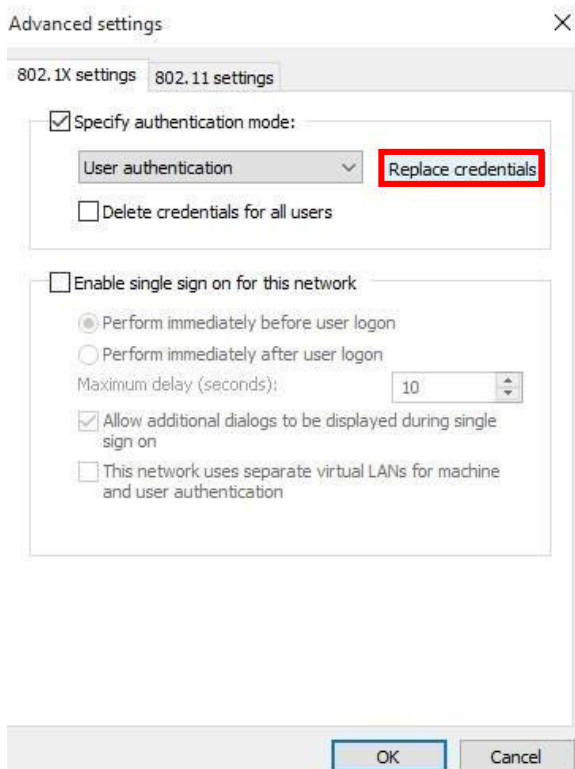
3.4 Select Wireless Properties



3.5 Select Advanced Settings from the Security Tab



3.6 Click on the “Replace Credentials” button.



Type your new credentials into the box provide and click on “OK”. Click on “OK” on any other dialog boxes to close them.

For students:

For staff:

Username: Your student B Code@sd.ulster.ac.uk
Password: Your University network password
Click on the “OK” button.

Username: Your staff ecode@ad.ulster.ac.uk
Password: Your University network password
Click on the “OK” button.

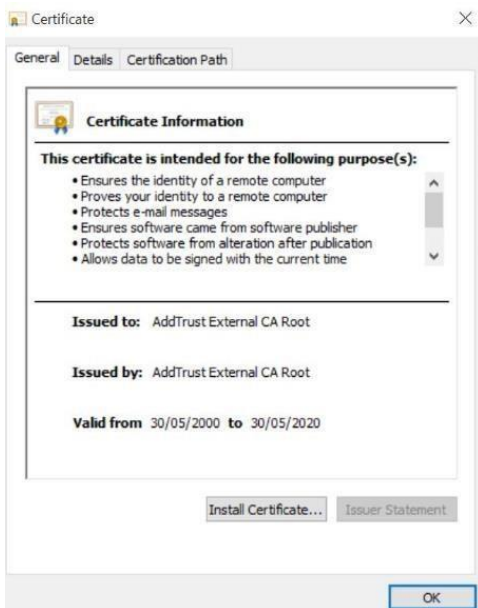
4. Downloading and Installing the Certificate required to connect to eduroam (Only required if not already on machine)

Please Note: This step is only required the first time you are connecting to eduroam @ Ulster University or if you have attempted to set up the eduroam connection and found that the required certificate is not already listed on your machine. Ulster University uses a CA security certificate for eduroam so that you can check and have confidence that you are connecting securely to genuine Ulster University servers only. To ensure that your connection is secure, you need to install “AddTrust External CA Root” authority (CA). To do this, you will need to use another wireless network, connect to 3G or copy the certificate from a wired PC to a USB storage device to install on your device.

4.1 Download the certificate file from the Ulster eduroam website at <http://www.ulster.ac.uk/isd/services/networking/eduroam> by clicking on the “Download Security Certificate” link.

4.2 When the certificate has downloaded, double click on the certificate and when prompted and select open.

4.3 When prompted with the following screen, click on the “Install Certificate” button.



4.4 Select Current User Next and Click on the “Next Button” when the “Welcome Certificate Import Wizard” screen appears.

Welcome to the Certificate Import Wizard

This wizard helps you copy certificates, certificate trust lists, and certificate revocation lists from your disk to a certificate store.

A certificate, which is issued by a certification authority, is a confirmation of your identity and contains information used to protect data or to establish secure network connections. A certificate store is the system area where certificates are kept.

Store Location

Current User

Local Machine

To continue, click Next.

Next

Cancel

4.5 Select “Automatically select the certificate store based on the type of certificate” by clicking on/selecting the radio button to the left of it and select next.



Certificate Store

Certificate stores are system areas where certificates are kept.

Windows can automatically select a certificate store, or you can specify a location for the certificate.

- Automatically select the certificate store based on the type of certificate
- Place all certificates in the following store

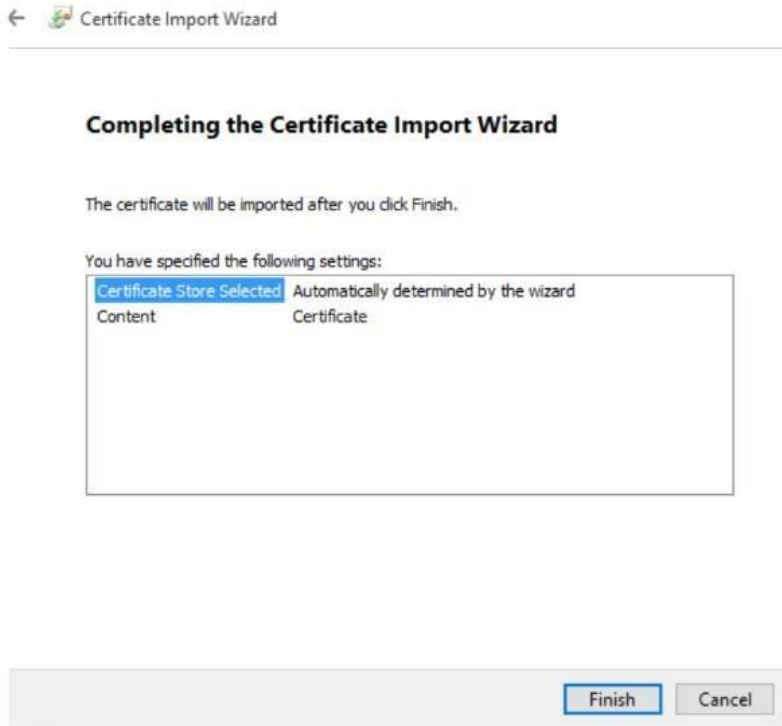
Certificate store:

Browse...

Next

Cancel

4.6 Check that the “Completing the Certificate Import Wizard” now reads the same as in the image below and then click on the “Finish” button.



You should then be presented with the following screen to let you know the certificate has been successfully installed. Click ok to finish.

