

Oregon Public Health Division

Published December 15th, 2022

## Data at a Glance December 4rd 2022—December 10 2022 (Week 49)

	Current Week (49)	Previous Week (48)
<b>Percentage positive influenza tests<sup>1</sup></b>	<b>32.3%</b>	<b>29.3%</b>
<b>Portland tri-county influenza-associated hospitalizations<sup>2*</sup></b>	<b>109</b>	<b>182</b>
<b>Reported influenza outbreaks<sup>3</sup></b>	<b>29</b>	<b>22</b>
<b>Influenza-associated pediatric mortality<sup>3</sup></b>	<b>0</b>	<b>0</b>
<b>Percentage of emergency department visits for ILI<sup>4</sup></b>	<b>4.8%</b>	<b>5.1%</b>

<sup>1</sup>Percent positivity based on data from Oregon reporters to the National Respiratory and Enteric Virus Surveillance System (NREVSS)

<sup>2</sup>Based on hospitalization surveillance in Clackamas, Multnomah, and Washington counties.

<sup>3</sup>Based on reports made to the Oregon Health Authority

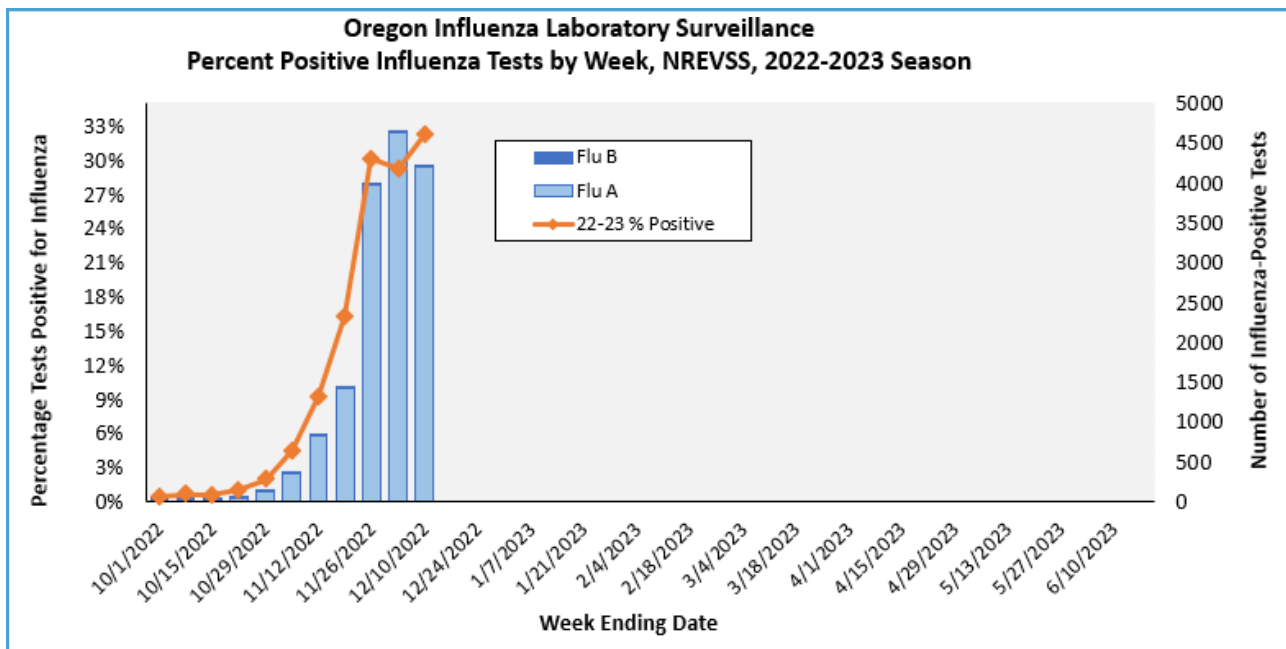
<sup>4</sup>Based on Oregon ESSENCE Syndromic Surveillance. Data represent statewide aggregate percent.

\*We do not believe the influenza data for the most recent surveillance week is accurate. Case ascertainment is currently hindered by hospital capacity strain. Significant backfill to hospitalization rates (and counts) is anticipated in the coming weeks.

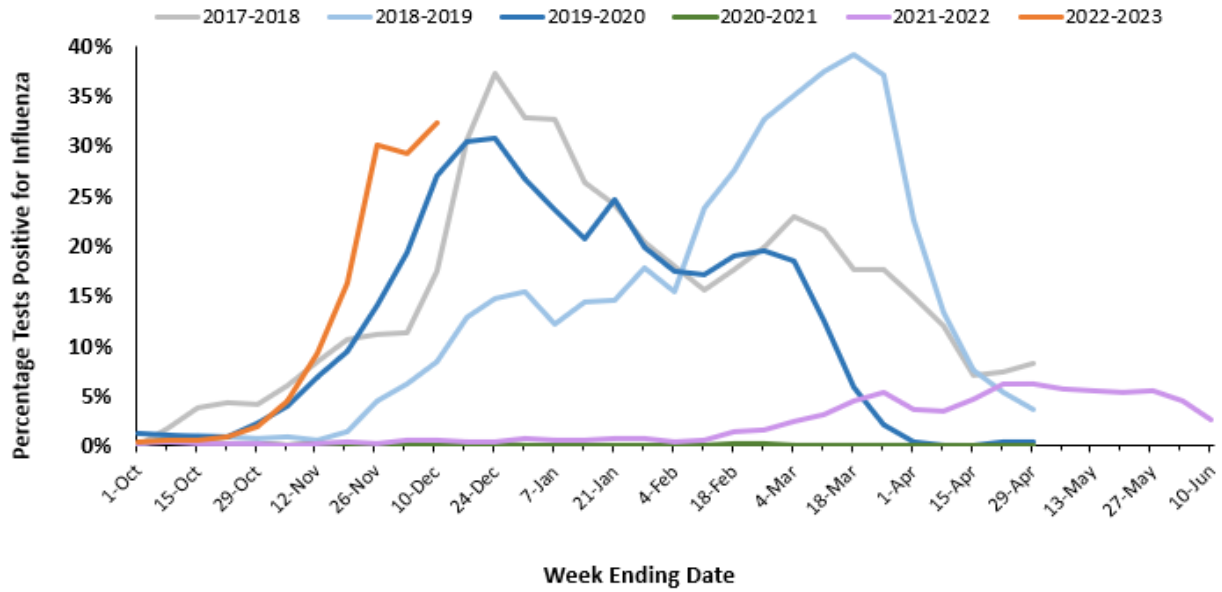
**Laboratory Surveillance:** The National Respiratory and Enteric Virus Surveillance System (NREVSS) is a laboratory-based system that monitors influenza and other respiratory viruses circulating the United States.

**Table 1. Influenza Test Results in Oregon, NREVSS, Current Week, 2022–2023 Season**

Region	Positive Total Tests	No.		Flu A		Flu B	
		No.	(%)	No.	(%)	No.	(%)
Portland Metro	8128	2574	31.7%	2573	100.0%	1	0.0%
Southern Oregon	2367	774	32.7%	774	100.0%	0	0.0%
Columbia Gorge	851	334	39.2%	334	100.0%	0	0.0%
Central Oregon	267	86	32.2%	85	98.8%	1	1.2%
Willamette Valley	1461	451	30.9%	447	99.1%	4	0.9%
<b>State Total</b>	<b>13074</b>	<b>4219</b>	<b>32.3%</b>	<b>4213</b>	<b>99.9%</b>	<b>6</b>	<b>0.1%</b>

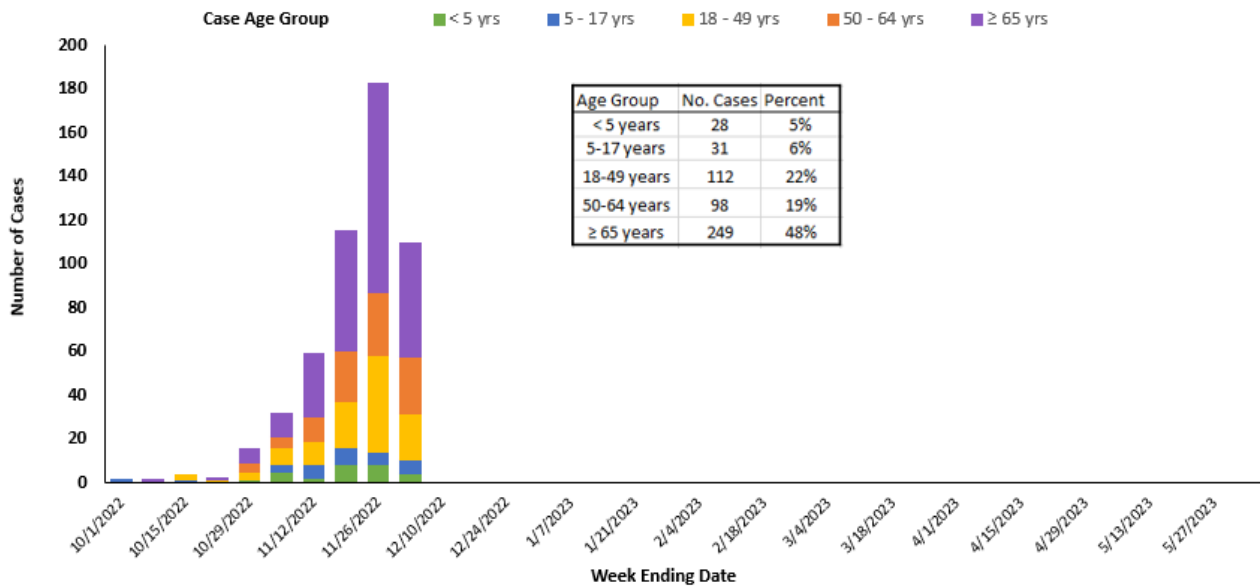


**Figure 2. Oregon Influenza Laboratory Surveillance  
Percent Positive Influenza Tests by Season, NREVSS**



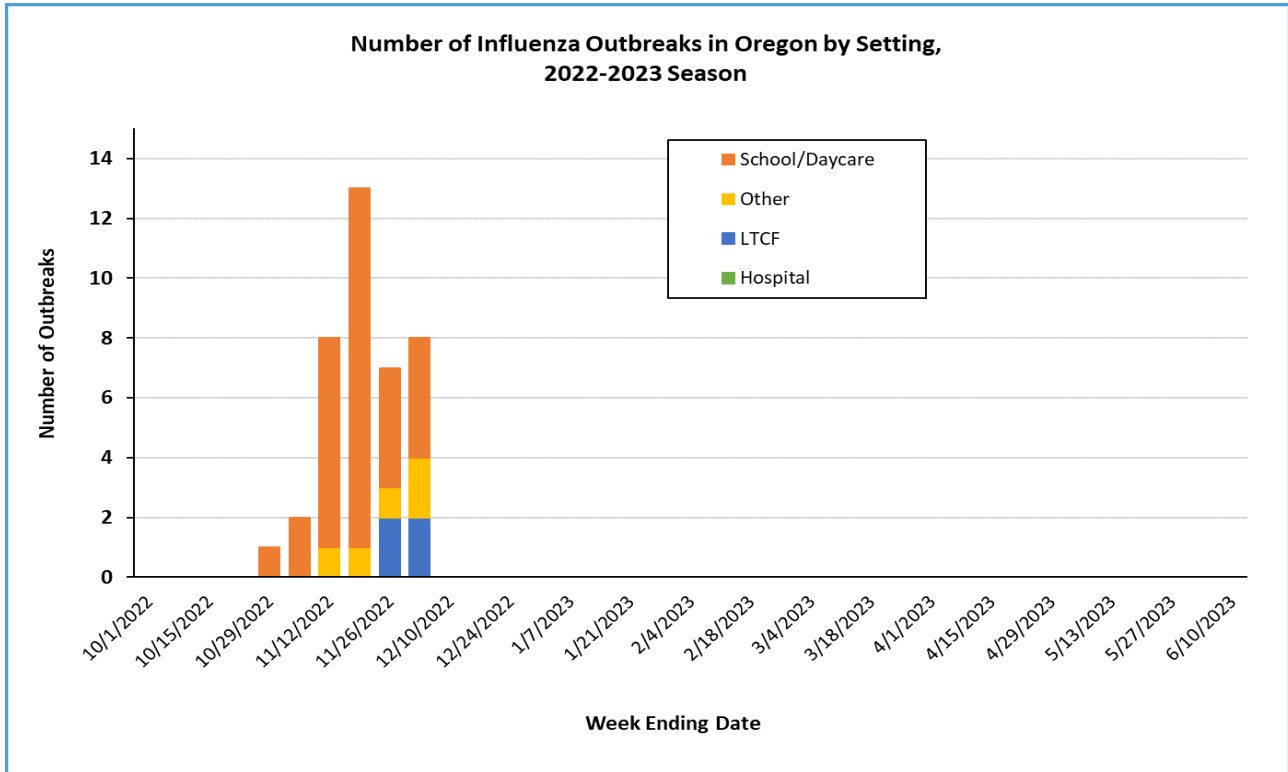
**Portland Tri-County Influenza Hospitalizations:** In Clackamas, Multnomah, and Washington counties there was 109 influenza-associated hospitalization reported during week 49 of 2022. There has been 518 reported hospitalization during the 2022-2023 season.

**Figure 3. Portland Metro Area Influenza-Associated Hospitalizations  
by Week and Age Group, 2022-2023 Season\***

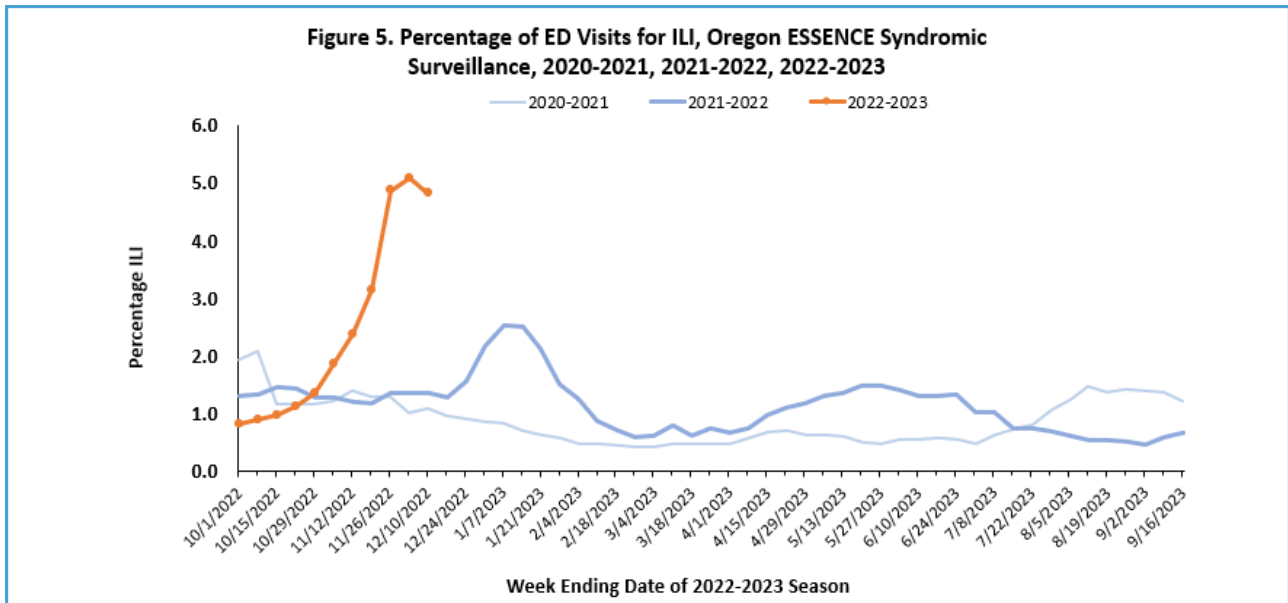


\*We do not believe the influenza data for the most recent surveillance week is accurate. Case ascertainment is currently hindered by hospital capacity strain. Significant backfill to hospitalization rates (and counts) is anticipated in the coming weeks.

**Influenza Outbreaks:** There were 29 influenza outbreaks reported during week 49, 2022, there have been 84 reported outbreaks during the 2022-2023 season.



**Oregon ESSENCE Syndromic Surveillance:** Oregon Public Health tracks hospital emergency department (ED) visits throughout the state using the Oregon ESSENCE syndromic surveillance system. ESSENCE categorizes chief complaints into syndrome categories, which include influenza-like illness (ILI). Figure 5, below, displays percentages for all of Oregon during this influenza season compared with the previous two influenza seasons. The percent of ED visits for ILI in all of Oregon was 4.8% during week 49, 2022.



**Influenza-Associated Pediatric Mortality Surveillance:** Influenza-associated deaths in children 17 years of age and younger are nationally notifiable. There were no pediatric influenza deaths in Oregon reported during week 49, 2022 and none yet reported to the Oregon Health Authority in the 2022—2023 influenza season.

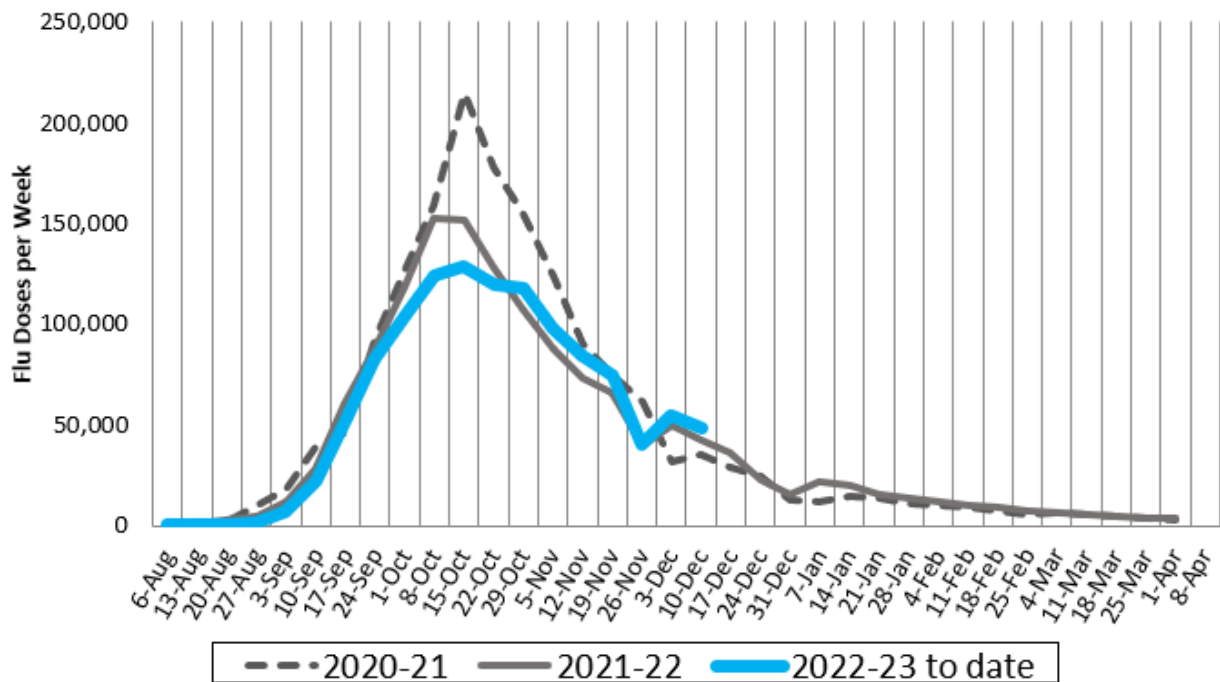
### Influenza Immunizations:

The Oregon Immunization Program (OIP) tracks seasonal influenza immunizations on a weekly basis using the ALERT Immunization Information System (ALERT IIS). The ALERT IIS is Oregon's registry of immunizations given to people in Oregon. As of the current date, ALERT IIS has 1.3 million reported influenza immunizations, and 1.2 million for Oregon residents.

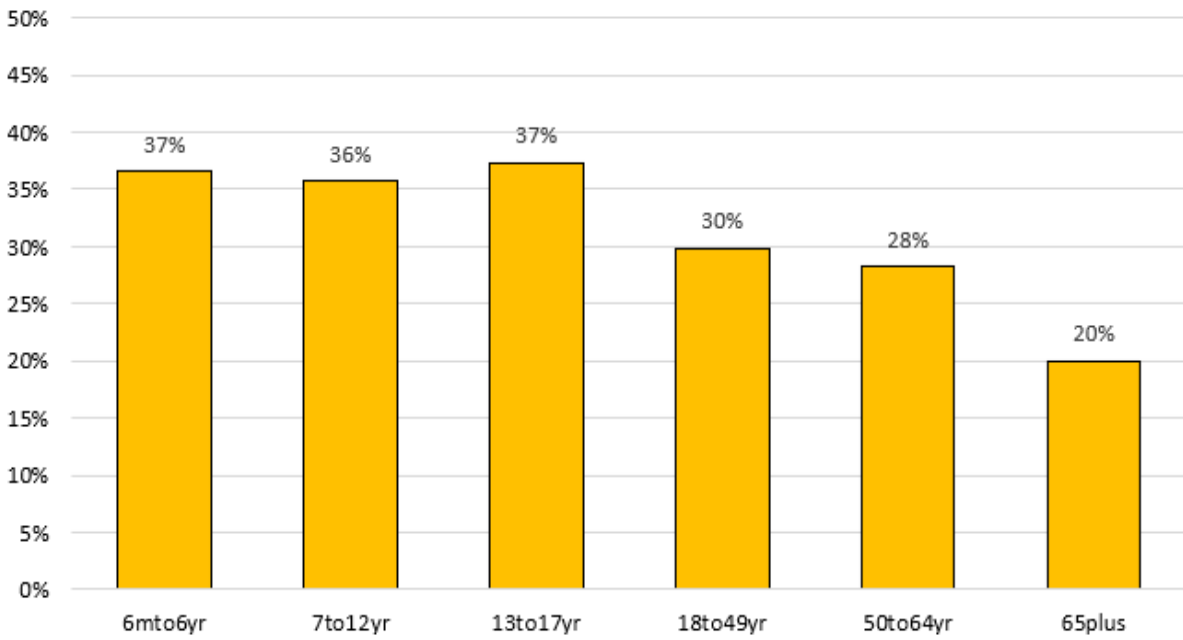
Influenza immunization seeking appears higher in November/December of this season in comparison to last season. For this week, OIP is including a chart to answer the question of who is seeking influenza immunization post-peak this season. In the below chart, a higher proportion of post-peak immunizations are going to children- with 37% of child influenza immunizations having been given post after Nov. 5th. In contrast, older adults tend to seek influenza immunizations earlier in the season, with only 20% of senior immunizations being given after the peak period.

OIP also tracks disparities in influenza immunization by race and ethnicity. In the chart below, 'NHPI' stands for Native Hawaiian/Pacific Islander, and 'AIAN' is for American Indian/Alaskan Native. The chart below reflects a long-standing disparity in Oregon for Black, Latinx, and AIAN populations in terms of influenza immunization. As a caveat, the ALERT IIS collects most but not all influenza immunizations given in Oregon. OIP also produces population adjusted influenza immunization rates at the end of the season which may differ from preliminary rate calculations.

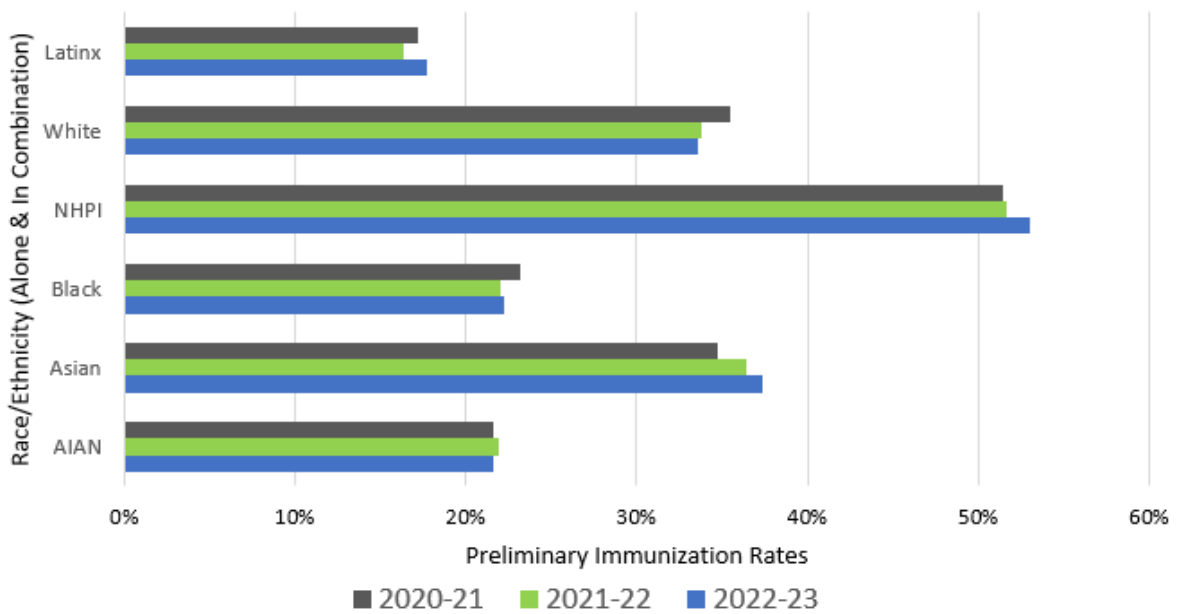
### 2022-23 Season Oregon Flu Vaccine Doses in ALERT IIS by Week



### Percent of All Flu Shots Given Later in Season (After Nov 5th) by Age, as of Dec 10th 2022



### Preliminary Estimates of Oregon Influenza Immunization Rates by Race/Ethnicity as of Dec. 10th, 2022



**US Data (from [CDC FluView](#)):** Seasonal influenza activity remains high but appears to be declining in some areas.

### Viruses

- **Clinical Labs:** The percentage of respiratory specimens testing positive for influenza at clinical laboratories is 25.4% this week.
- **Public Health Labs:** The majority of viruses detected are influenza A (H3N2)
- **Virus Characterization:** Genetic characterization data are now summarized on [CDC FluView](#)

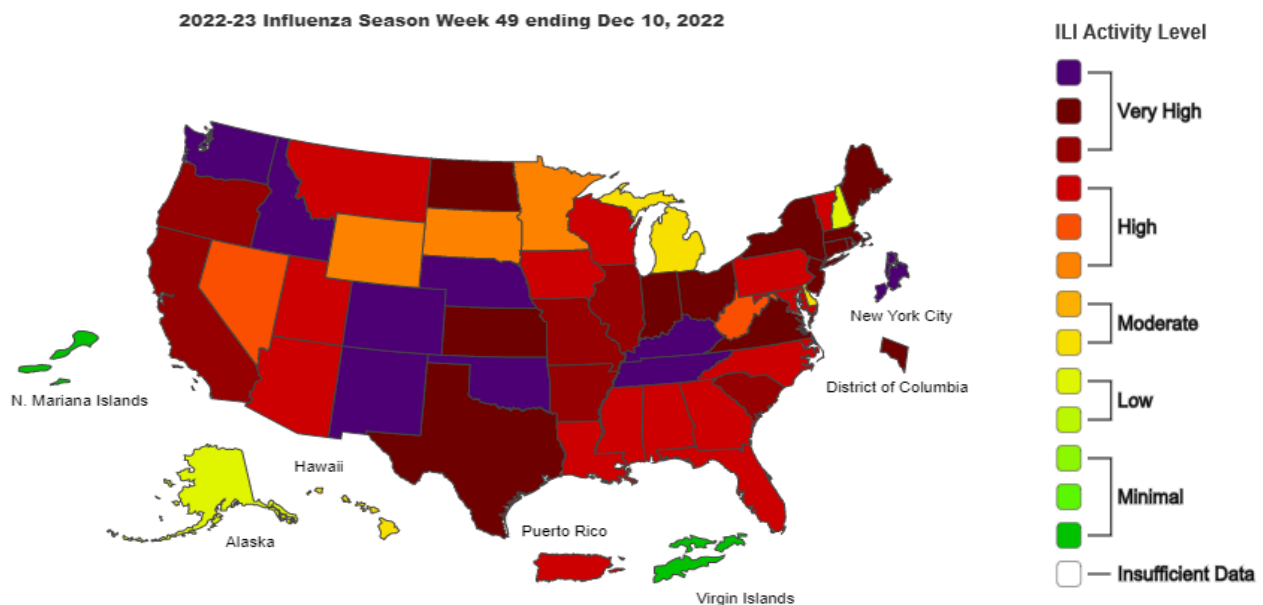
### Illness

- **ILINet Outpatient Illness:** Nationwide during week 49, 6.9% of visits to a health care provider are for respiratory illness.
- **ILINet Activity Map:** This week, 48 jurisdictions experienced high or very high activity and 3 jurisdictions experienced moderate activity,
- **Long-term Care Facilities:** This week, 6.8% of facilities reported  $\geq 1$  influenza-positive test among residents this week.

### Severe Disease

- **FluSurv-NET:** 32.7 per 100,000 cumulative hospitalization rate
- **HHS Protect Hospitalizations:** 23,503 patients admitted to hospitals with influenza this week
- **PIC Mortality:** 11.6% of the deaths that occurred this week were due to pneumonia, influenza, and/or COVID-19 (PIC). This percentage is above the epidemic threshold of 6.6% for this week.
- **Pediatric Deaths:** 9 influenza related deaths were reported this week, 30 influenza-associated pediatric deaths have occurred during the 2022-2023 season and have been reported to CDC.

## Influenza-like Illness (ILI) Activity Level Indicator by Data Reported to ILINet



**Map above:** This map uses the proportion of outpatient visits to healthcare providers for influenza-like illness to measure the ILI activity level within a state. It does not, however, measure the extent of geographic spread of flu within a state. Therefore, outbreaks occurring in a single city could cause the state to display high activity levels.

All Flu Bites data are preliminary and may change as additional reports are received. Find the most recent Flu Bites report online at: <http://www.oregon.gov/oha/ph/DiseasesConditions/CommunicableDisease/DiseaseSurveillanceData/Influenza/Pages/surveil.aspx>